

V&V Reference Report

L2 ASCDS Version : 7.6.10

Observation 3035 - L2 Version 001
Chandra X-Ray Center

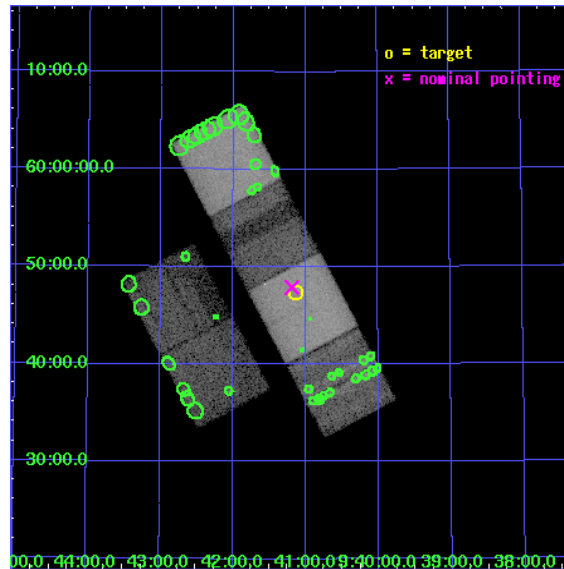
L2 Processing Date : Jan 10 2007

Contents

1	Front	2
2	OBI	3
2.1	OBI	3
2.1.1	Images	3
2.1.2	Bias	3
2.1.3	Parameters	4
2.1.4	Events	4
2.2	Compared Parameters	5
2.3	Aspect	6
2.4	Star Slots	9
2.4.1	Slot 3	9
2.4.2	Slot 4	10
2.4.3	Slot 5	11
2.4.4	Slot 6	12
2.4.5	Slot 7	13
2.5	FID Slots	14
2.5.1	Slot 0	14
2.5.2	Slot 1	15
2.5.3	Slot 2	16
3	Point Sources	17
A	Summary	18
A.1	Status	18
A.2	Comments	18

1 Front

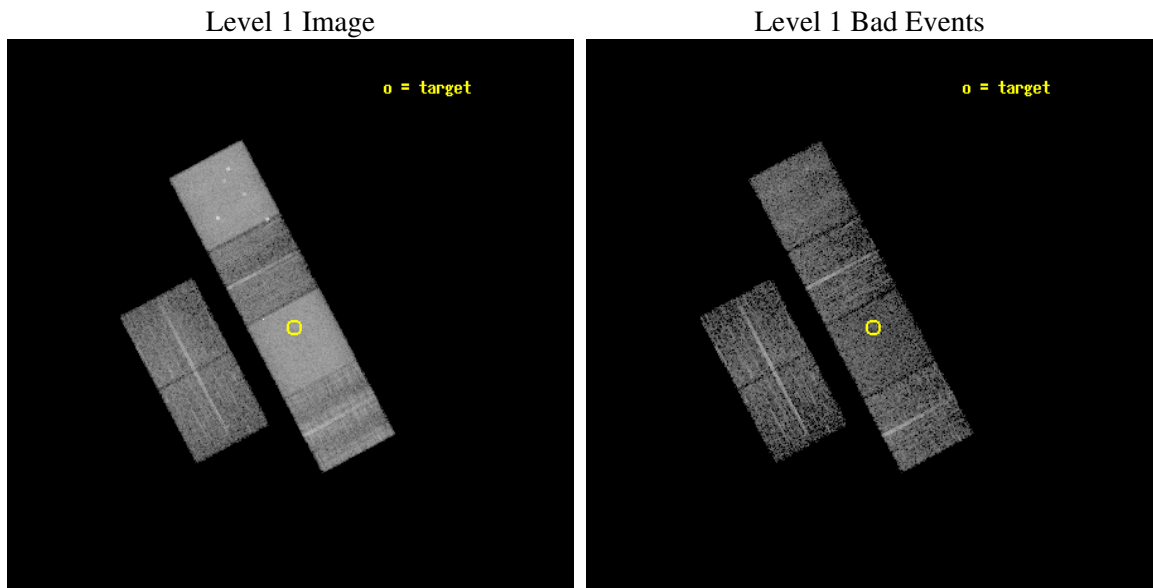
seq_num	700474
obs_id	3035
title	A CHANDRA AND XMM-NEWTON STUDY OF THE MOST DISTANT QUASARS: X-RAYING THE FIRST MASSIVE BLACK HOLES
observer	Prof. William Brandt
object	SDSS094108+594725
dtcycle	0
cycle	P
ra_targ	145.285
dec_targ	59.7905
ra_nom	145.29689676865
dec_nom	59.798173719584
roll_nom	62.101716348562
revision	2
ontime	4211.200003922
livetime	4157.8752537921
ontime2	4209.835522145
ontime3	4211.200003922
ontime5	4211.200003922
ontime6	4211.200003922
ontime7	4211.200003922
ontime8	4211.200003922
l2events	226741



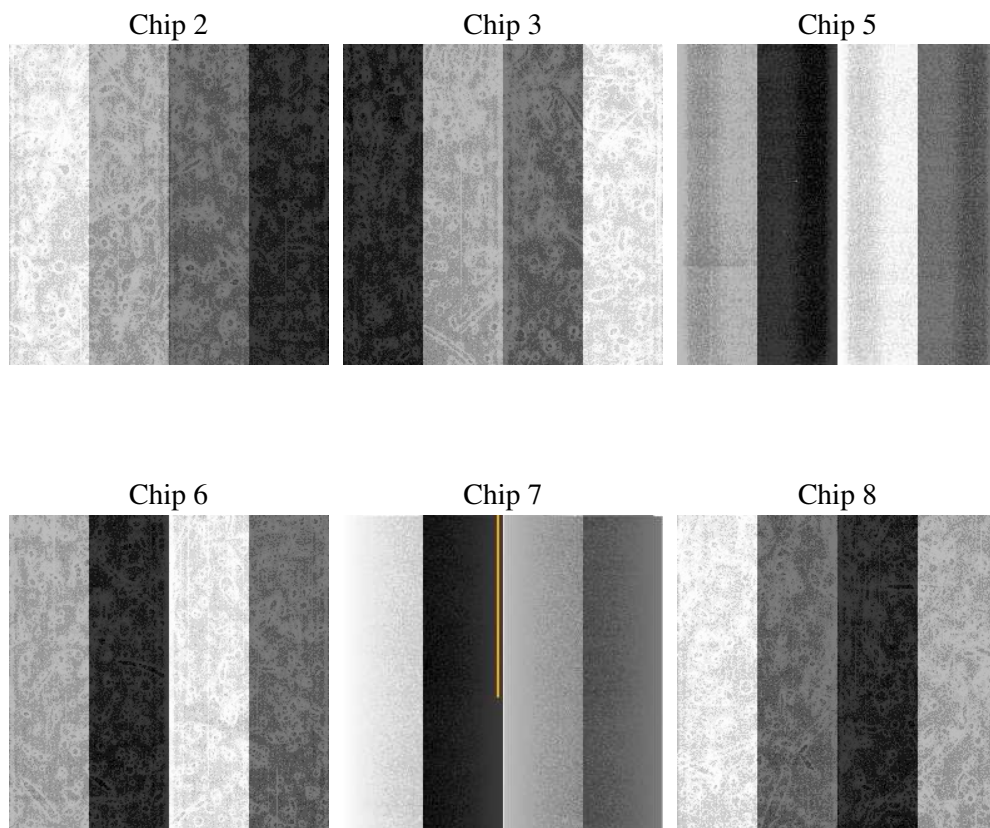
2 OBI

2.1 OBI

2.1.1 Images



2.1.2 Bias



2.1.3 Parameters

obi_num	1
ascdsver	7.6.10
caldsver	3.3.0
date	2007-01-11T02:23:45
revision	2

sched_exp_time	4259.002000
ontime	4211.200003922
ontime2	4209.835522145
ontime3	4211.200003922
ontime5	4211.200003922
ontime6	4211.200003922
ontime7	4211.200003922
ontime8	4211.200003922
llevents	411124

2.1.4 Events

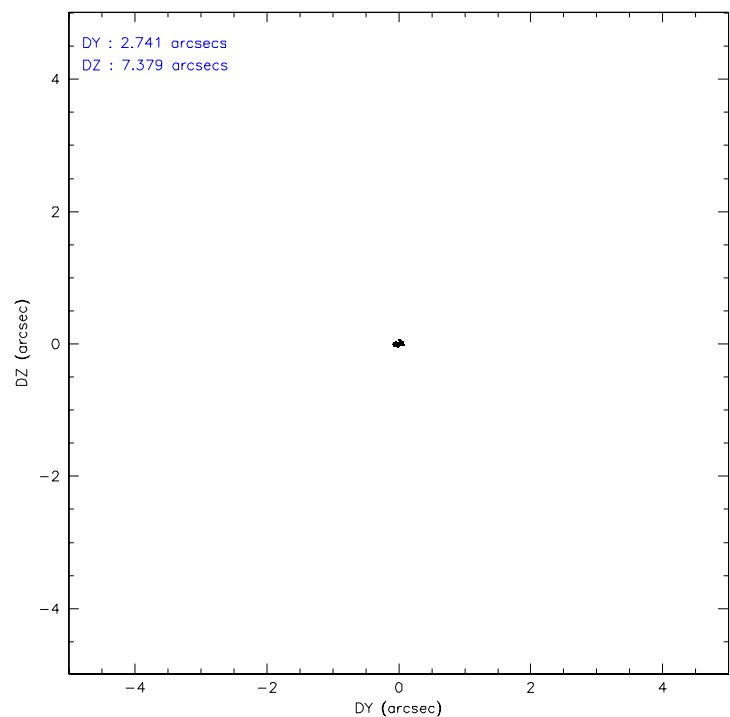
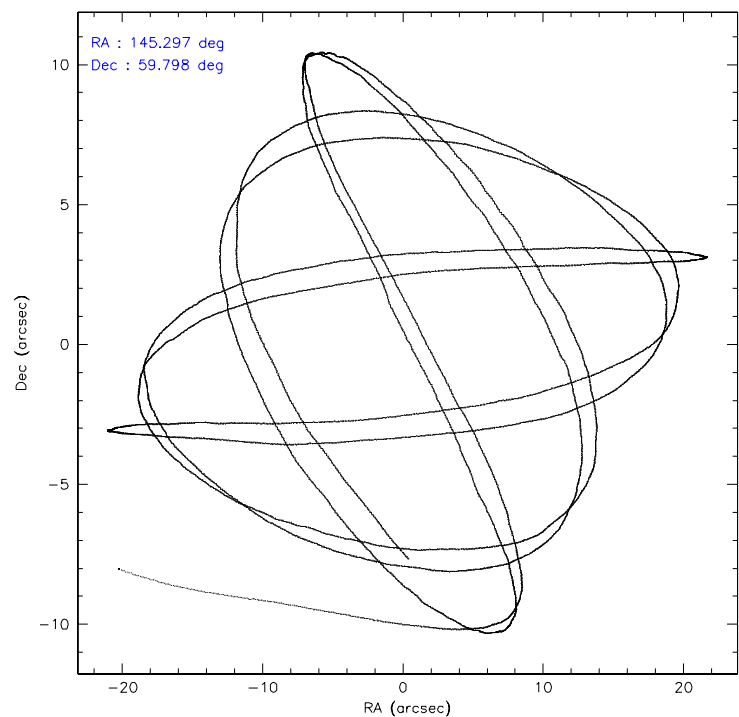
	ccd 2	ccd 3	ccd 5	ccd 6	ccd 7	ccd 8
level 1 events	41368	39817	110369	45626	104111	69833
rejected events	27810	25424	28406	26883	22199	30400
rejected %	67%	63%	25%	58%	21%	43%

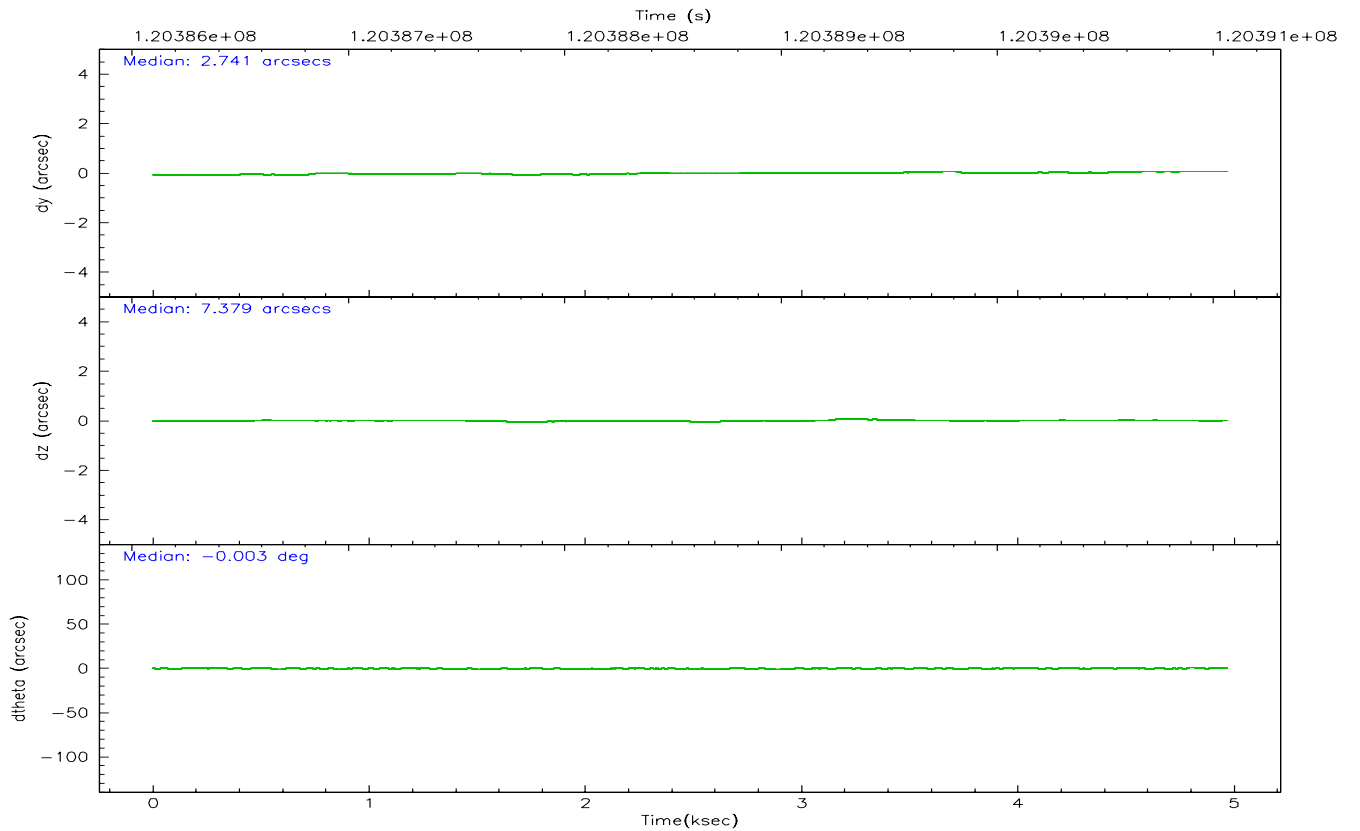
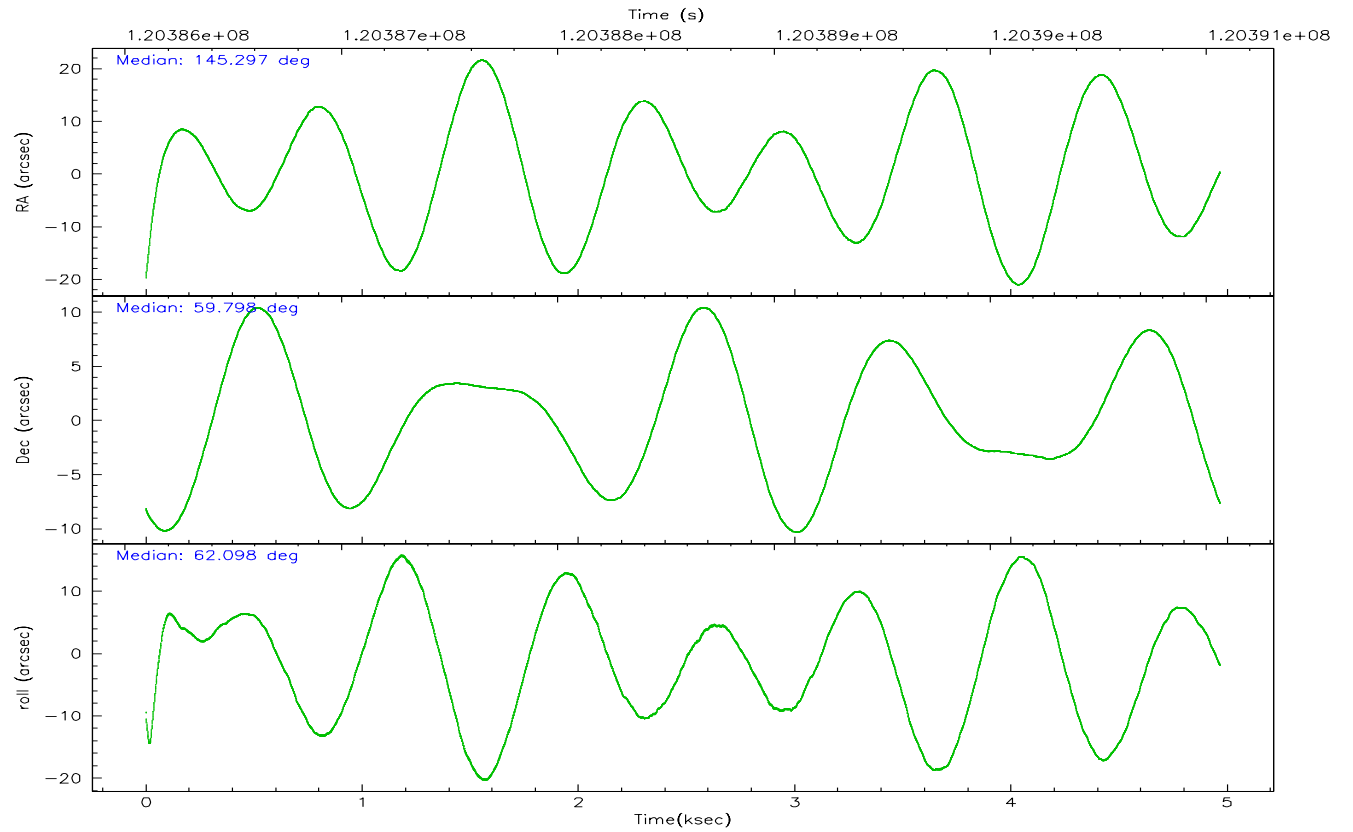
	ccd 2	ccd 3	ccd 5	ccd 6	ccd 7	ccd 8
grade 0 events	7194	7210	14349	11015	9277	19762
	17%	18%	13%	24%	8%	28%
grade 1 events	36	28	179	47	49	102
	0%	0%	0%	0%	0%	0%
grade 2 events	3431	4295	22797	4694	14360	6487
	8%	10%	20%	10%	13%	9%
grade 3 events	353	421	5091	478	6444	4681
	0%	1%	4%	1%	6%	6%
grade 4 events	530	507	5086	563	6235	4271
	1%	1%	4%	1%	5%	6%
grade 5 events	936	1071	3963	1230	3727	1514
	2%	2%	3%	2%	3%	2%
grade 6 events	2050	1968	34702	2007	45637	4275
	4%	4%	31%	4%	43%	6%
grade 7 events	26838	24317	24202	25592	18382	28741
	64%	61%	21%	56%	17%	41%

2.2 Compared Parameters

Parameter	Planned	Actual	Parameter	Planned	Actual
Instrument	ACIS	ACIS	Obspar format version number	6	6
Detector	ACIS-235678	ACIS-235678	Obspar file type	PREDICTED	ACTUAL
Grating	NONE	NONE	Obspar update status	NONE	UPDATED
Data mode	FAINT	FAINT	Number of optional ACIS chips dropped	0	0
Observation mode	POINTING	POINTING	On-chip summing requested	N	N
Pointing RA	145.299549	145.2968967686542	Subarray requested	NONE	NONE
Pointing Dec	59.770921	59.7981737195843	Alternating exposures requested	N	N
Pointing Roll	61.942913	62.10171634856196	Primary exposure time	0.000000	3.2
SIM focus pos (mm)	-0.684267	-0.6828225247311905			
SIM defocus (mm)	0	0.001444936568705701			
SIM translation stage pos (mm)	-190.132523	-190.1400660498719			
SIM translation stage offset (mm)	0	0.00754346686406393			
Observation start time	120386805.184000	120385584.95321			
Observation start date	2001-10-25T08:45:41	2001-10-25T08:26:24			
Observation end time	120391064.184000	120391378.76594			
Observation end date	2001-10-25T09:56:40	2001-10-25T10:02:58			
Read mode	TIMED	TIMED			

2.3 Aspect



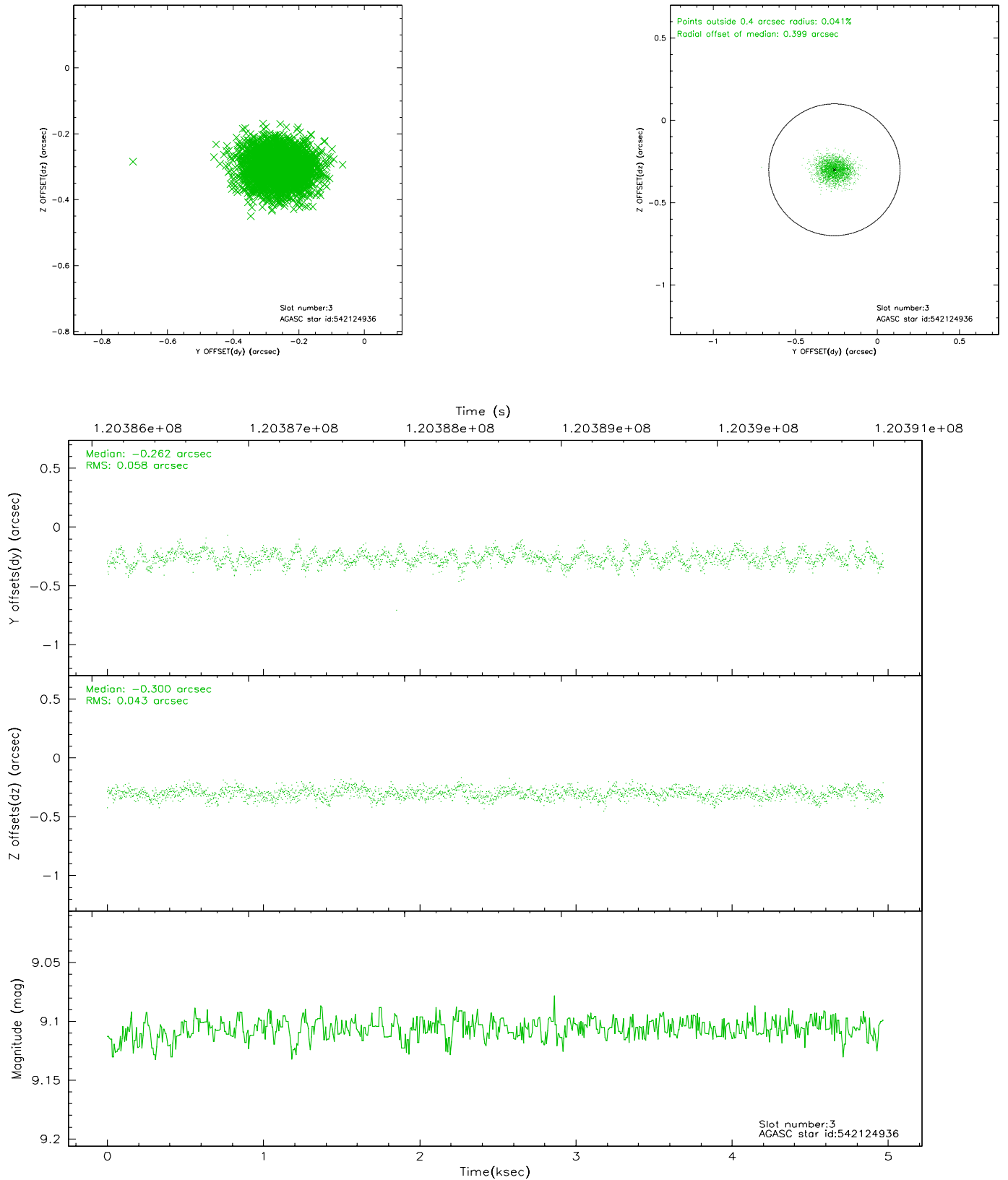


Slot Statistics

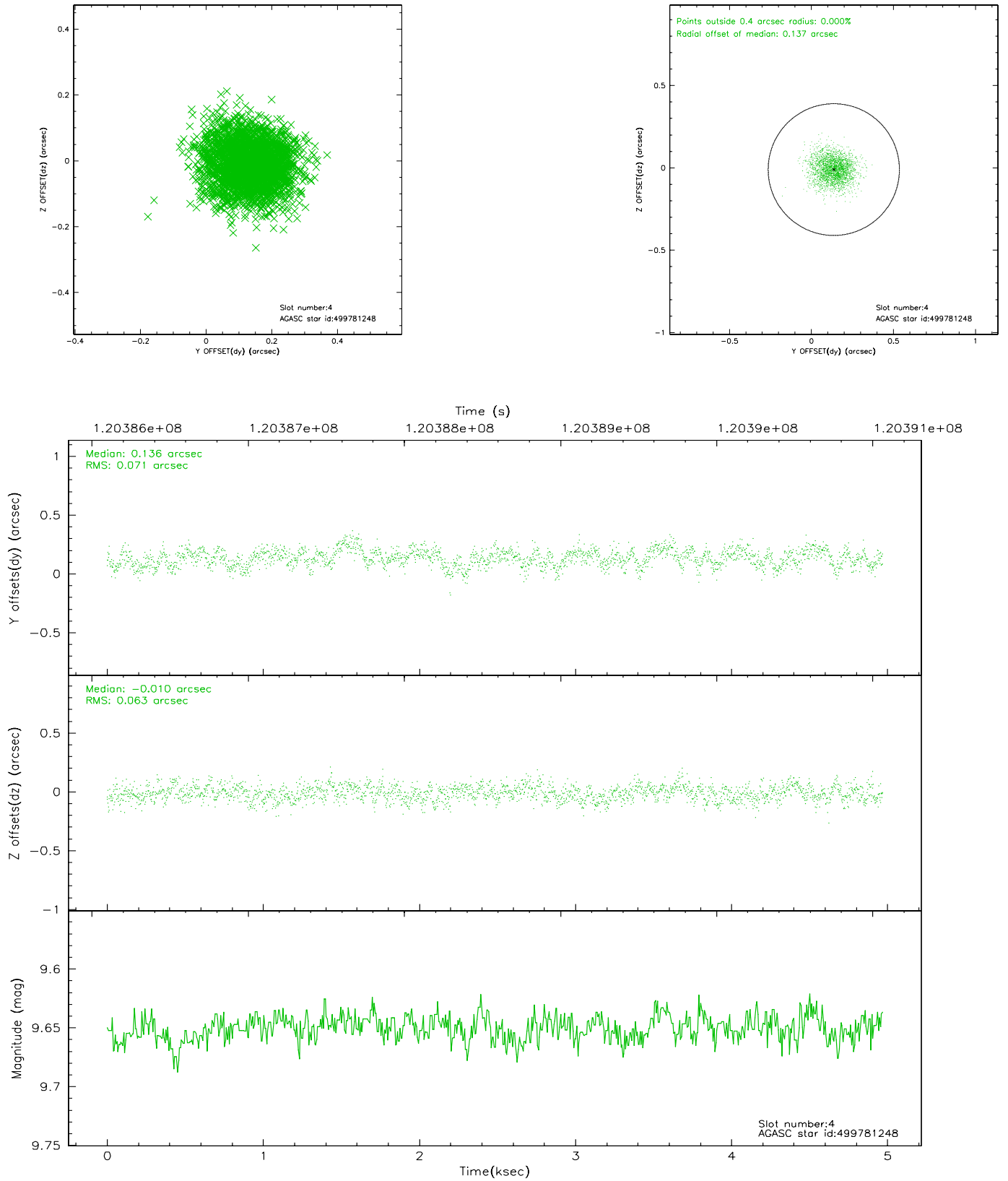
slot	status	id	mag	n_pts	med_dy	med_dz	dr1	dr2	ra	dec	mean_y	mean_z
0	FID	ACIS-S-3	7.36	1212	-0.071	-0.050	0.007	0.011	0.000000	0.000000	57.72	-1857.67
1	FID	ACIS-S-4	7.20	1212	-0.058	0.062	0.006	0.009	0.000000	0.000000	2157.97	178.57
2	FID	ACIS-S-5	7.24	1212	0.101	-0.002	0.006	0.011	0.000000	0.000000	-1806.53	173.77
3	GUIDE	542124936	9.11	2425	-0.262	-0.300	0.078	0.124	145.086813	60.487942	2099.62	1547.71
4	GUIDE	499781248	9.65	2421	0.136	-0.010	0.101	0.163	145.514551	59.205054	-1610.78	-1306.52
5	GUIDE	499782840	9.65	2423	0.059	0.164	0.116	0.182	145.997342	59.141313	-1389.81	-2199.97
6	GUIDE	499787488	9.64	2425	0.164	0.008	0.088	0.141	145.523125	59.100357	-1936.73	-1500.43
7	GUIDE	499780376	9.64	2422	-0.096	0.139	0.091	0.152	146.420418	59.670441	652.50	-1960.10

2.4 Star Slots

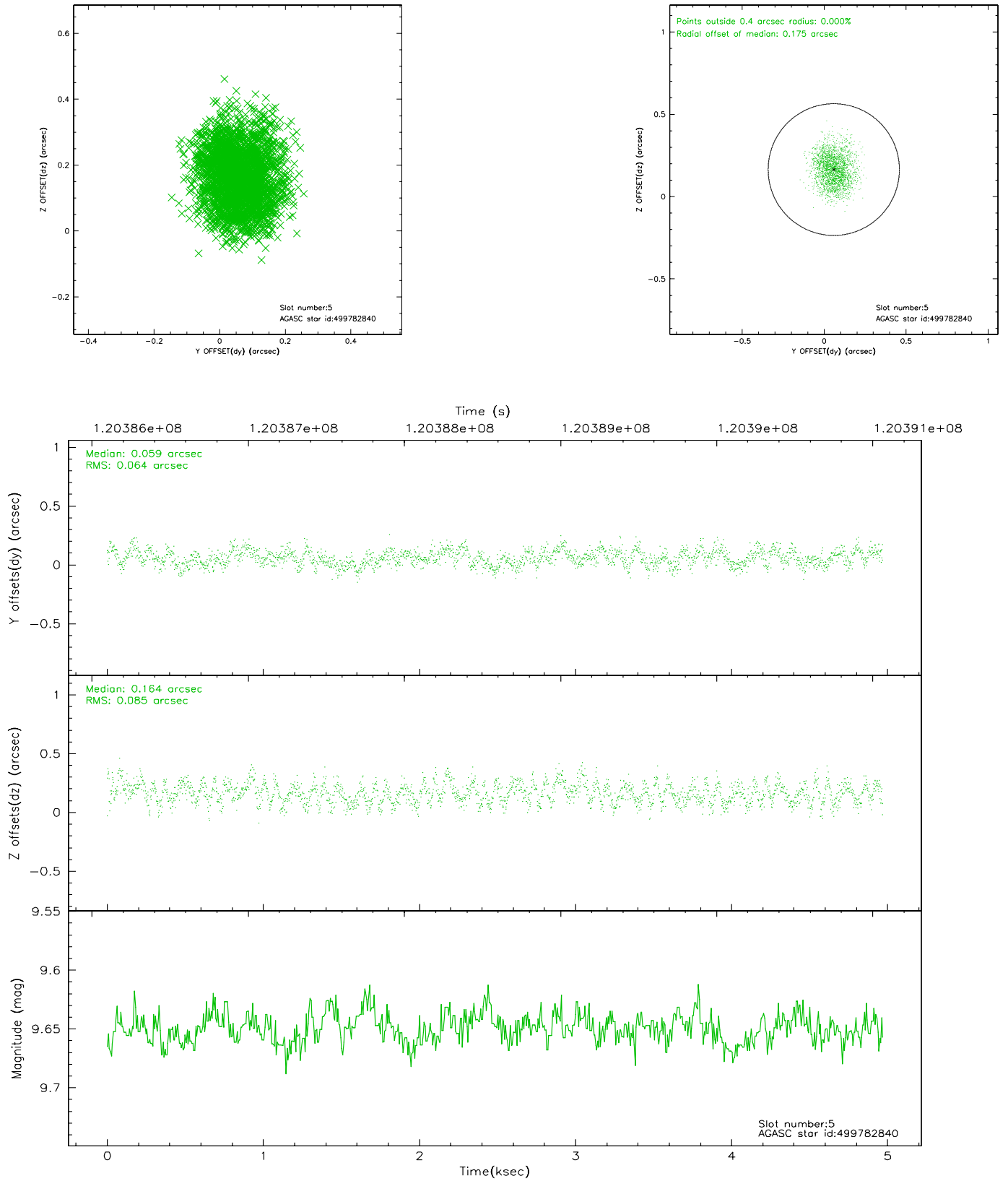
2.4.1 Slot 3



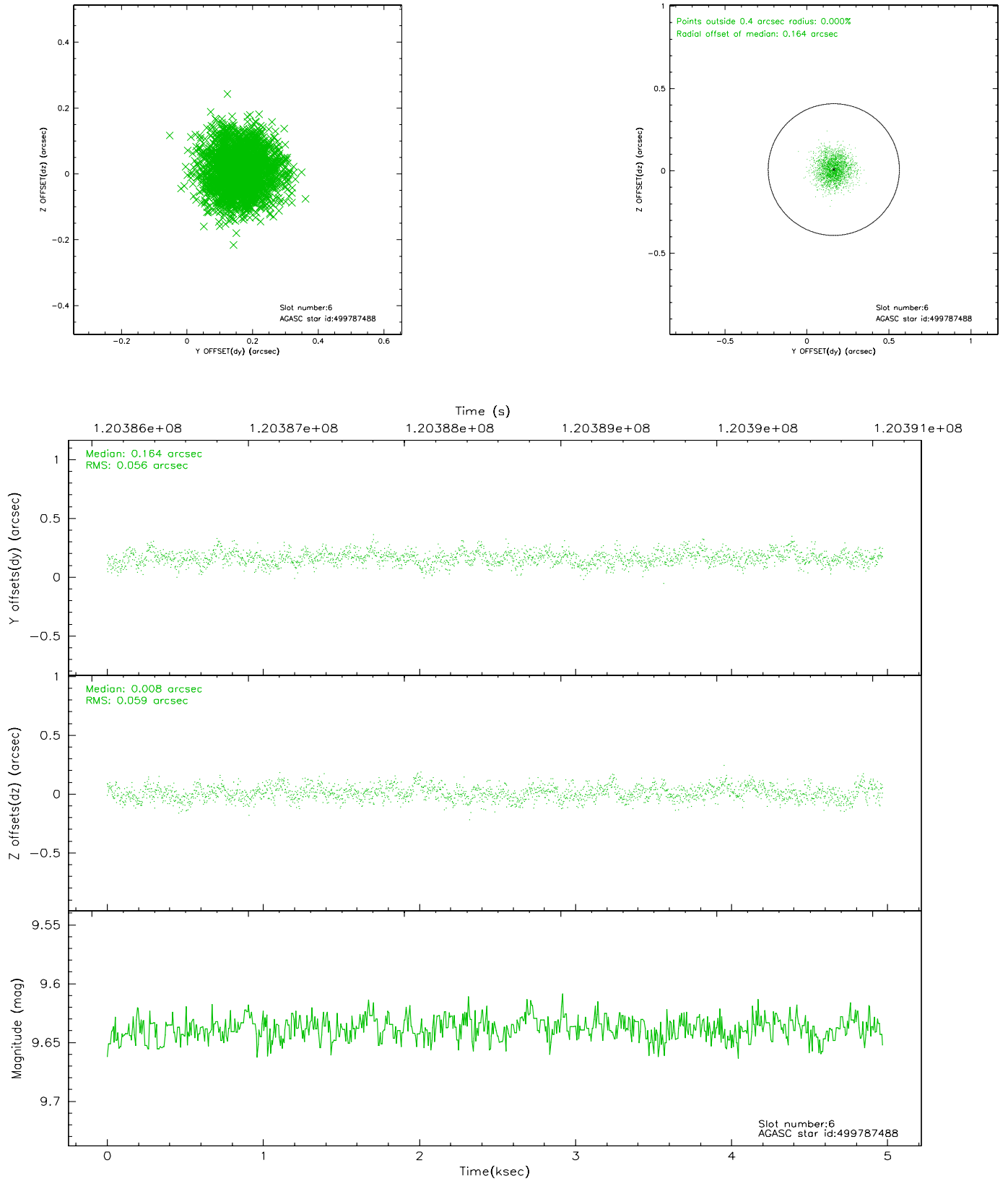
2.4.2 Slot 4



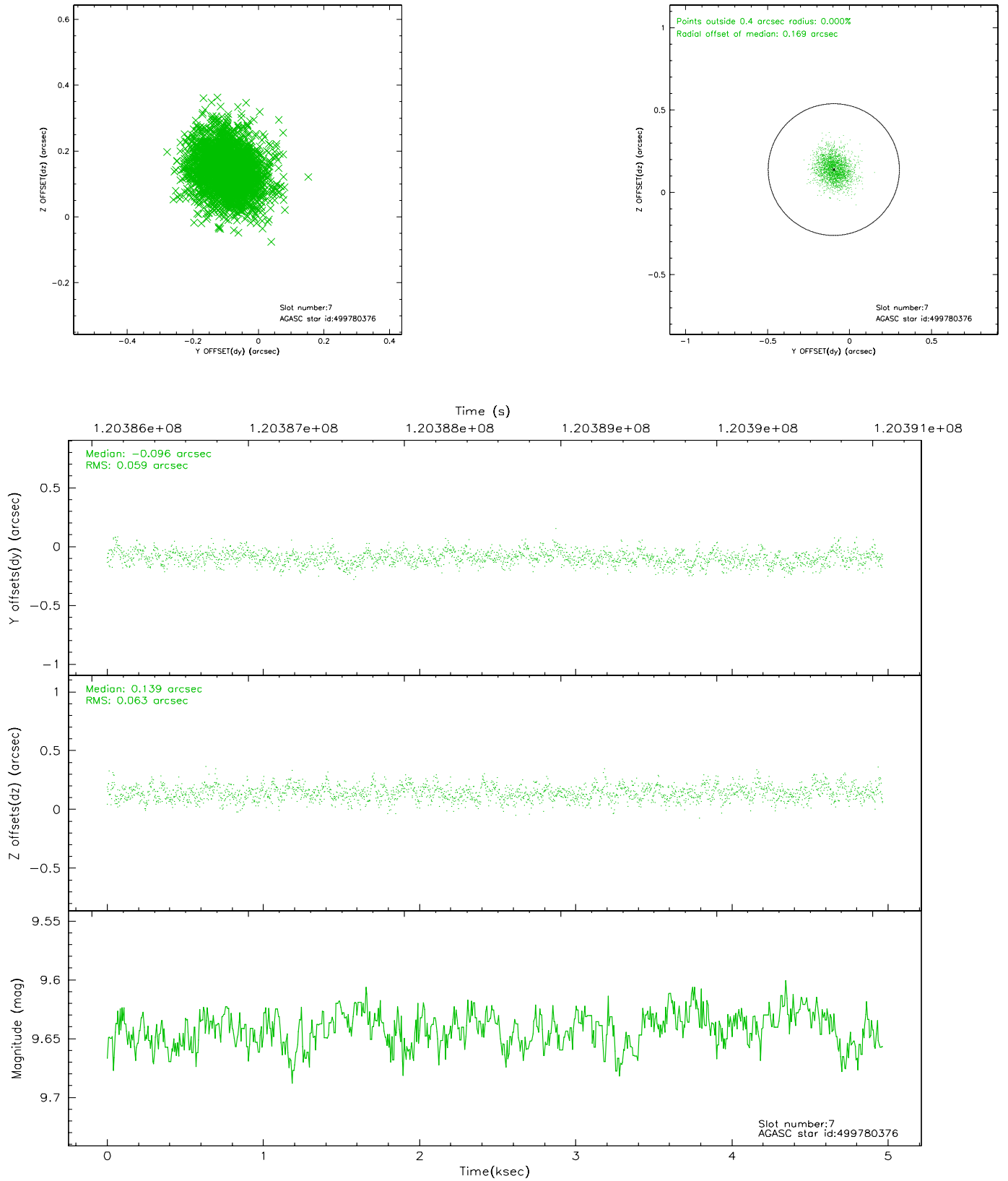
2.4.3 Slot 5



2.4.4 Slot 6

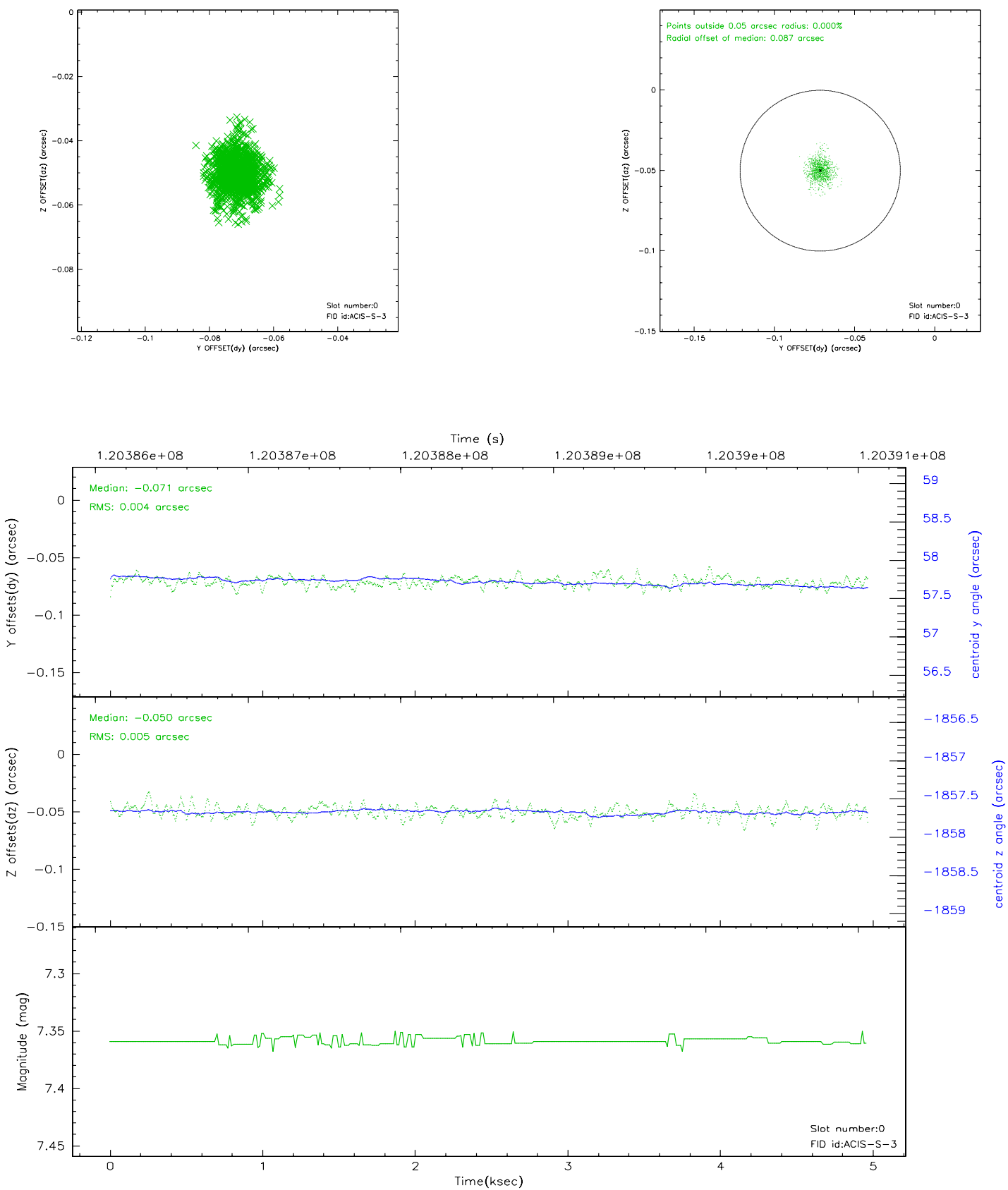


2.4.5 Slot 7

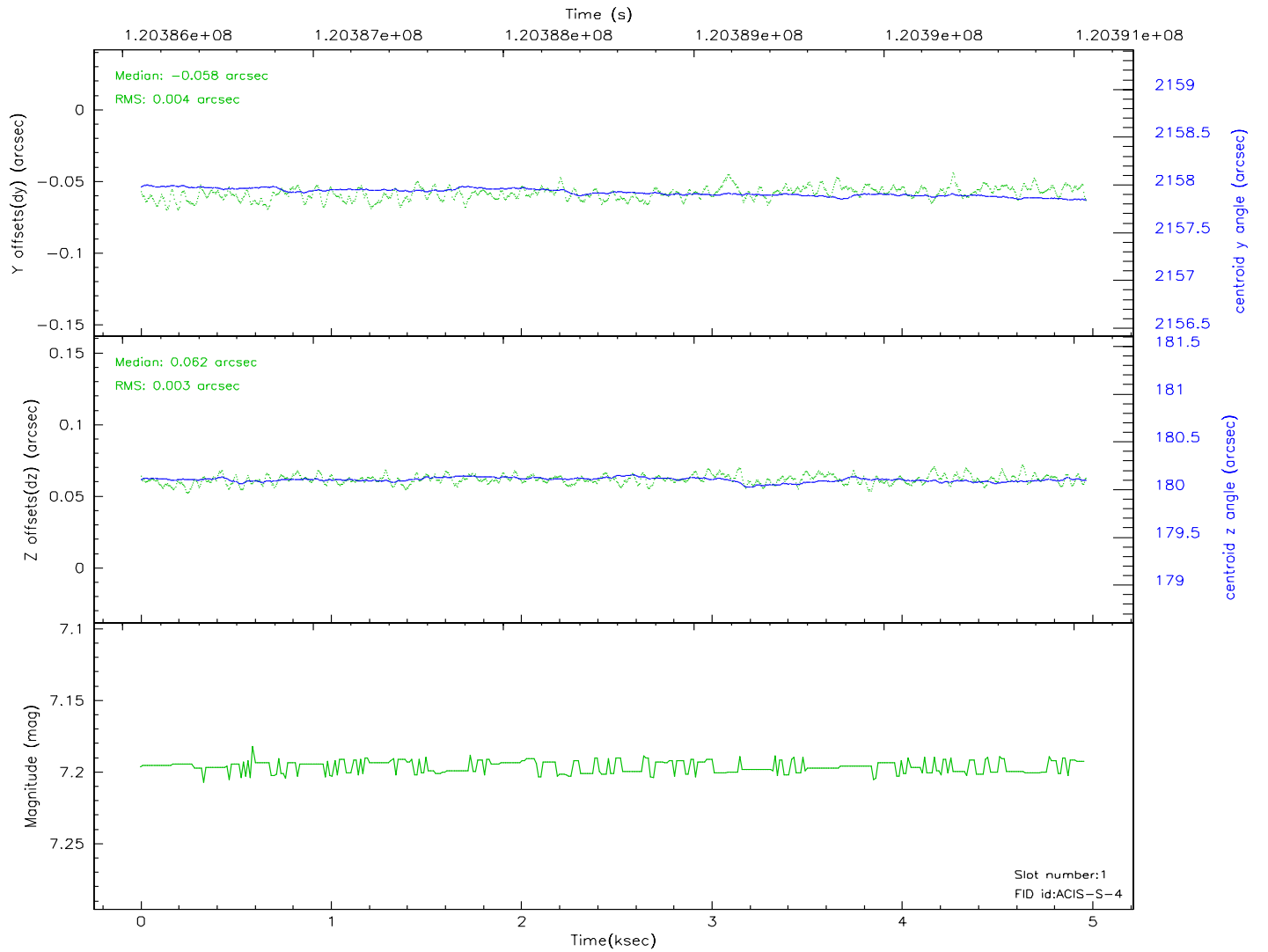
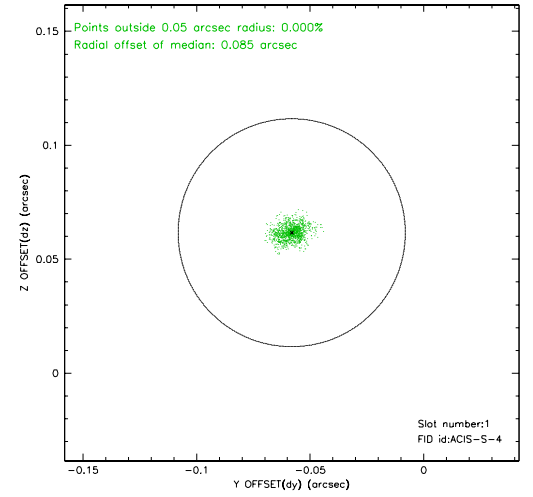
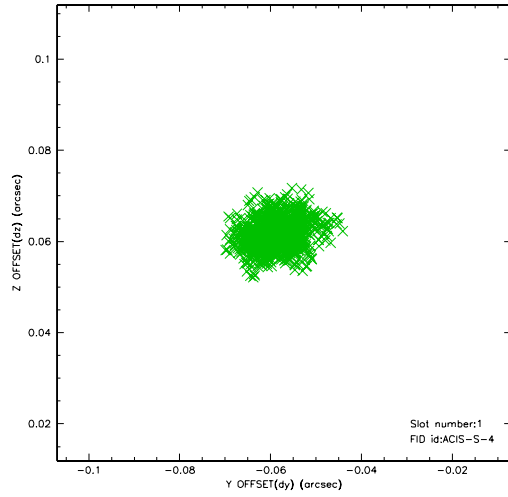


2.5 FID Slots

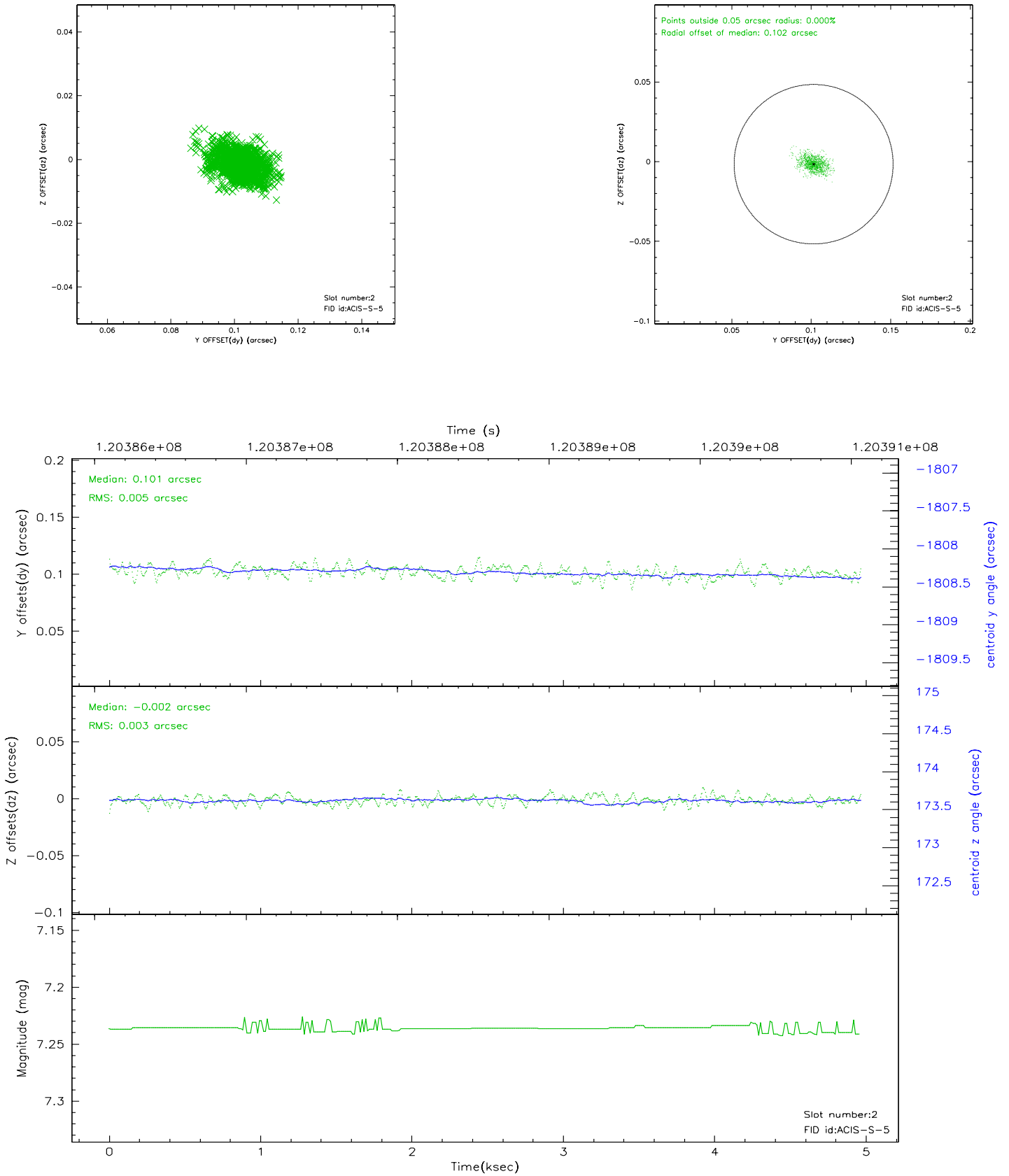
2.5.1 Slot 0



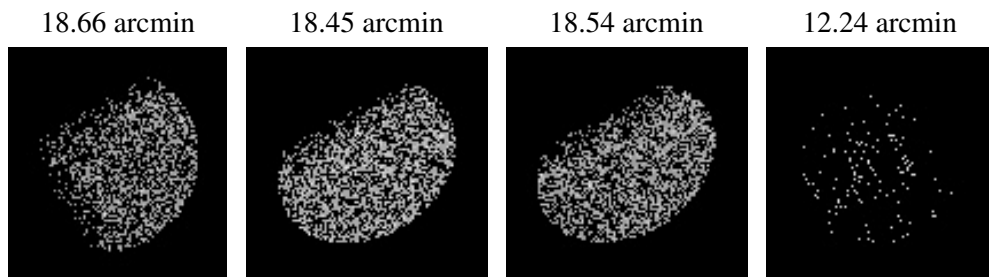
2.5.2 Slot 1



2.5.3 Slot 2



3 Point Sources



A Summary

A.1 Status

V&V Scientist	Jen Lauer
V&V Date (YYYY-MM-DD)	2007.01.11
V&V Edition	1
V&V Disposition and Status	OK
V&V Charge Time	4.211

A.2 Comments