

V&V Reference Report

L2 ASCDS Version : 7.6.9

Observation 3033 - L2 Version 001
Chandra X-Ray Center

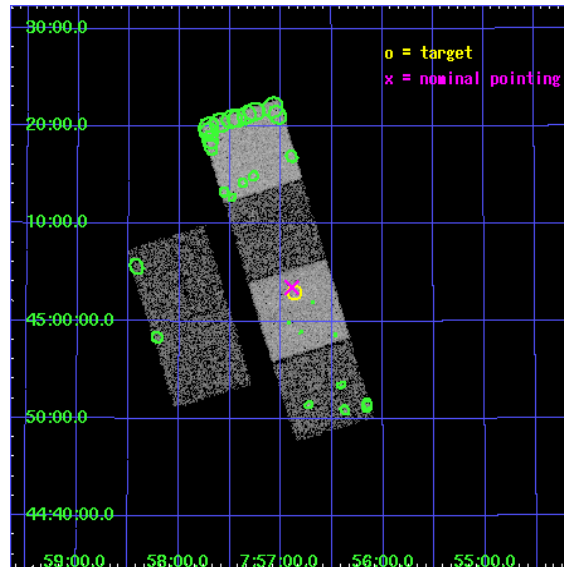
L2 Processing Date : Oct 5 2006

Contents

1	Front	2
2	OBI	3
2.1	OBI	3
2.1.1	Images	3
2.1.2	Bias	3
2.1.3	Parameters	4
2.1.4	Events	4
2.2	Compared Parameters	5
2.3	Aspect	6
2.4	Star Slots	9
2.4.1	Slot 3	9
2.4.2	Slot 4	10
2.4.3	Slot 5	11
2.4.4	Slot 6	12
2.4.5	Slot 7	13
2.5	FID Slots	14
2.5.1	Slot 0	14
2.5.2	Slot 1	15
2.5.3	Slot 2	16
3	Point Sources	17
A	Summary	18
A.1	Status	18
A.2	Comments	18

1 Front

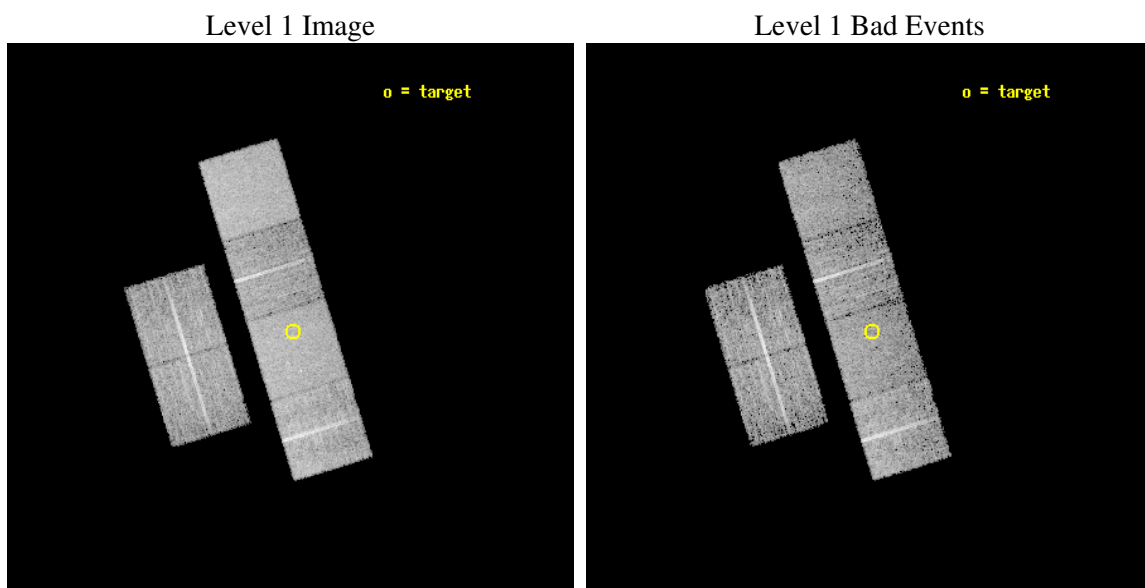
seq_num	700472
obs_id	3033
title	A CHANDRA AND XMM-NEWTON STUDY OF THE MOST DISTANT QUASARS: X-RAYING THE FIRST MASSIVE BLACK HOLES
observer	Prof. William Brandt
object	SDSS075652+450258
dtcycle	0
cycle	P
ra_targ	119.217083
dec_targ	45.049694
ra_nom	119.2234172302
dec_nom	45.058289442208
roll_nom	73.023747453613
revision	3
ontime	7055.9999737144
livetime	6966.6526534341
ontime2	7055.9999737144
ontime3	7055.9999737144
ontime5	7055.9999737144
ontime6	7055.9999737144
ontime7	7055.9999737144
ontime8	7052.7591230273
l2events	67336



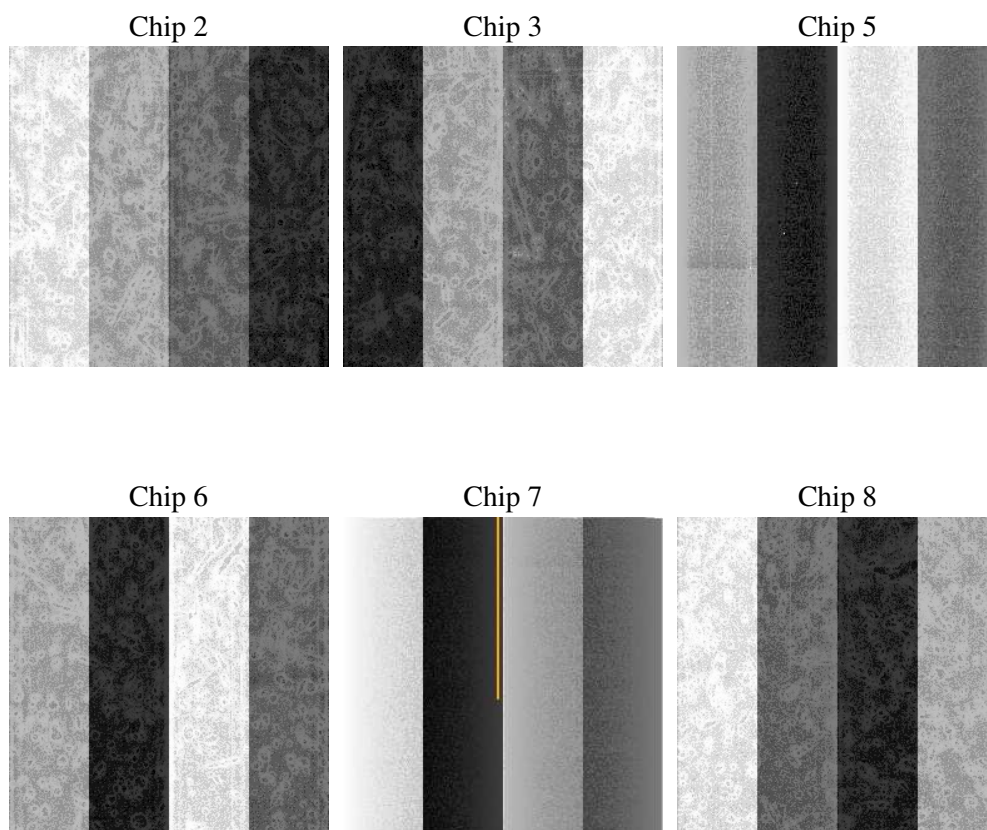
2 OBI

2.1 OBI

2.1.1 Images



2.1.2 Bias



2.1.3 Parameters

obi_num	1
ascdsver	7.6.9
caldbver	3.2.3
date	2006-10-05T19:23:07
revision	3

sched_exp_time	7300.000000
ontime	7058.8985621333
ontime2	7058.8985621333
ontime3	7058.8985621333
ontime5	7058.8985621333
ontime6	7058.8985621333
ontime7	7058.8985621333
ontime8	7055.6576117873
l1events	311906

2.1.4 Events

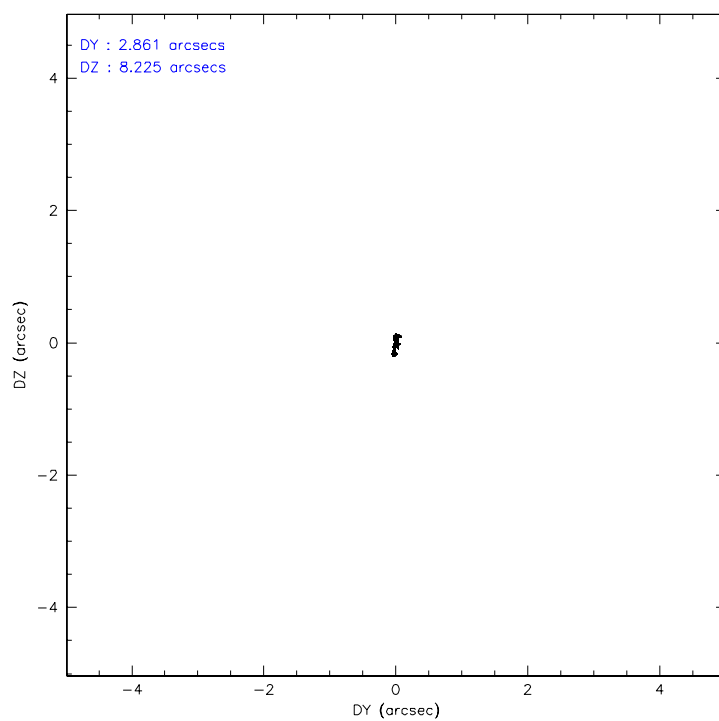
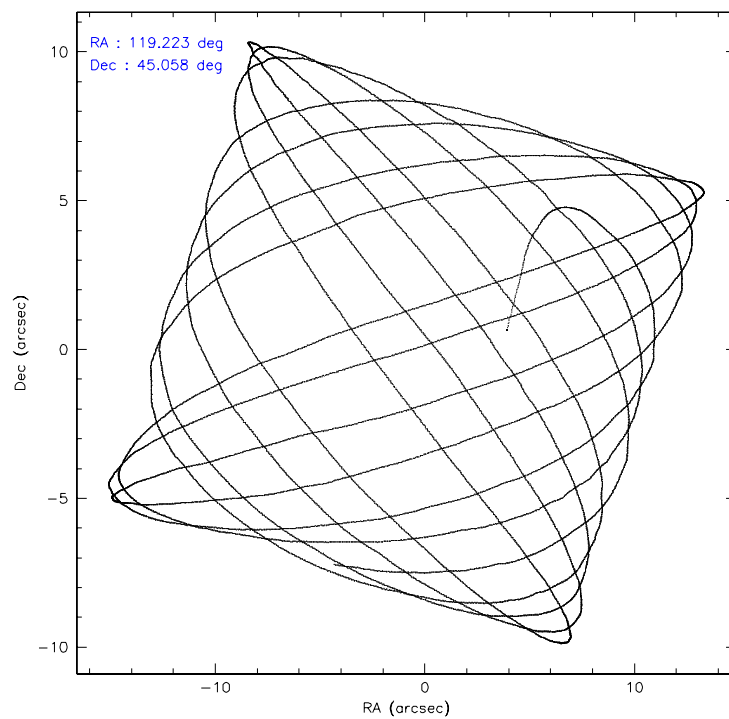
	ccd 2	ccd 3	ccd 5	ccd 6	ccd 7	ccd 8
level 1 events	44869	44253	62507	43450	58446	58381
rejected events	39627	39172	35496	38134	35959	47101
rejected %	88%	88%	56%	87%	61%	80%

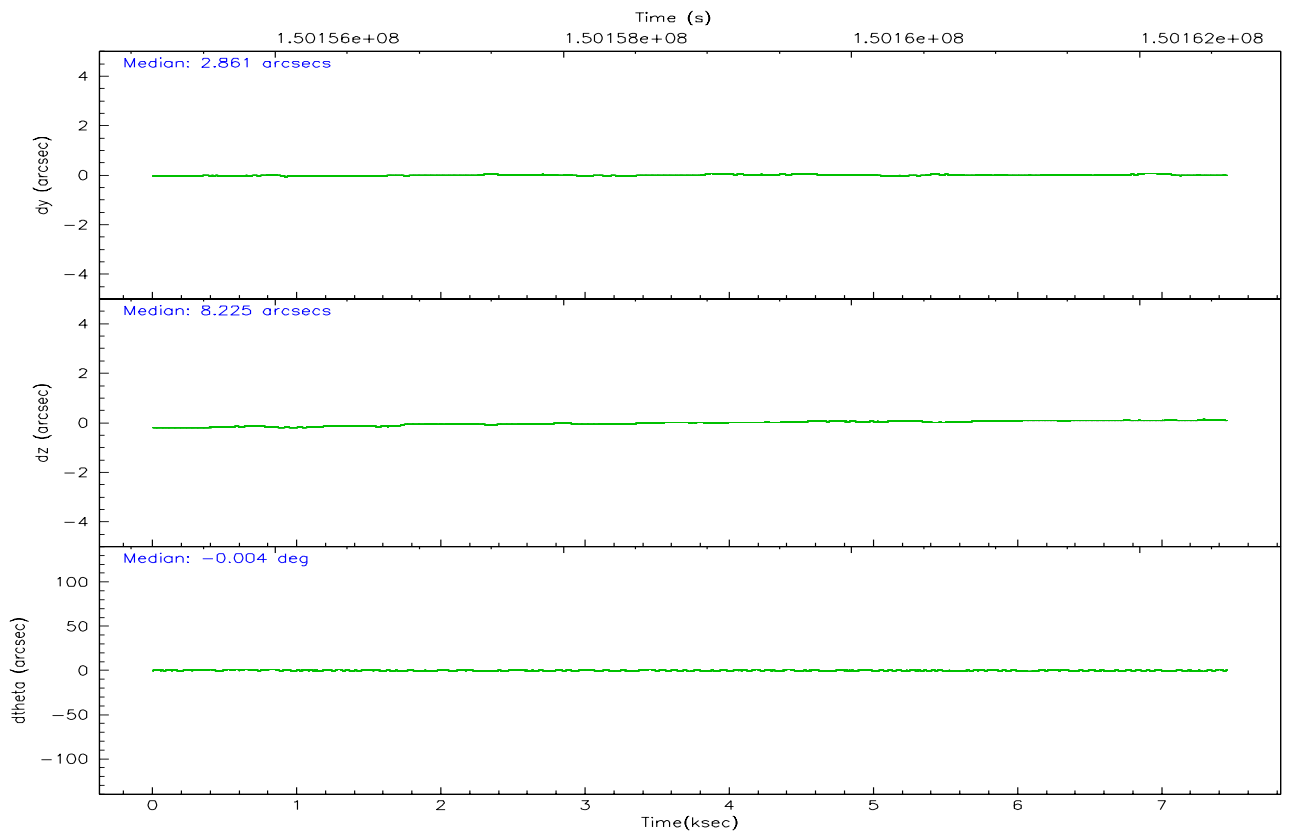
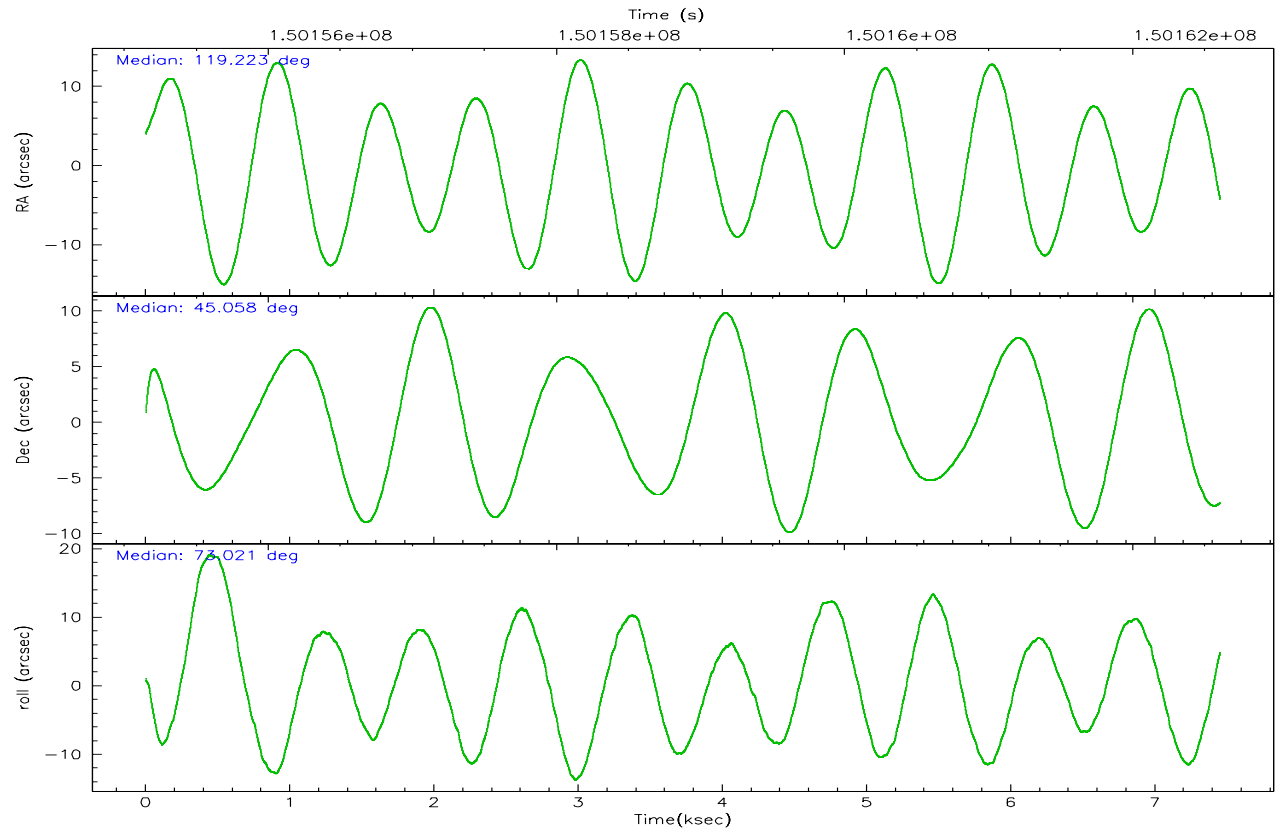
	ccd 2	ccd 3	ccd 5	ccd 6	ccd 7	ccd 8
grade 0 events	2337	2211	1098	2089	1390	3638
	5%	4%	1%	4%	2%	6%
grade 1 events	25	26	43	16	31	42
	0%	0%	0%	0%	0%	0%
grade 2 events	1063	934	8337	1085	5484	2395
	2%	2%	13%	2%	9%	4%
grade 3 events	460	508	606	563	1190	1352
	1%	1%	0%	1%	2%	2%
grade 4 events	492	529	586	513	1176	1100
	1%	1%	0%	1%	2%	1%
grade 5 events	1720	1865	3070	1981	3726	2491
	3%	4%	4%	4%	6%	4%
grade 6 events	895	899	16392	1071	13254	2797
	1%	2%	26%	2%	22%	4%
grade 7 events	37877	37281	32375	36132	32195	44566
	84%	84%	51%	83%	55%	76%

2.2 Compared Parameters

Parameter	Planned	Actual	Parameter	Planned	Actual
Instrument	ACIS	ACIS	Obspar format version number	6	6
Detector	ACIS-235678	ACIS-235678	Obspar file type	PREDICTED	ACTUAL
Grating	NONE	NONE	Obspar update status	NONE	UPDATED
Data mode	FAINT	FAINT	Number of optional ACIS chips dropped	0	0
Observation mode	POINTING	POINTING	On-chip summing requested	N	N
Pointing RA	119.232499	119.2234172301997	Subarray requested	NONE	NONE
Pointing Dec	45.031863	45.058289442208	Alternating exposures requested	N	N
Pointing Roll	72.860696	73.0237474536135	Primary exposure time	0.000000	3.2
SIM focus pos (mm)	-0.684267	-0.6828225247311905			
SIM defocus (mm)	0	0.001444936568705701			
SIM translation stage pos (mm)	-190.132523	-190.1400660498719			
SIM translation stage offset (mm)	0	0.00754346686406393			
Observation start time	150155307.184000	150154299.33795			
Observation start date	2002-10-04T21:47:23	2002-10-04T21:31:39			
Observation end time	150162607.184000	150163136.88831			
Observation end date	2002-10-04T23:49:03	2002-10-04T23:58:56			
Read mode	TIMED	TIMED			

2.3 Aspect



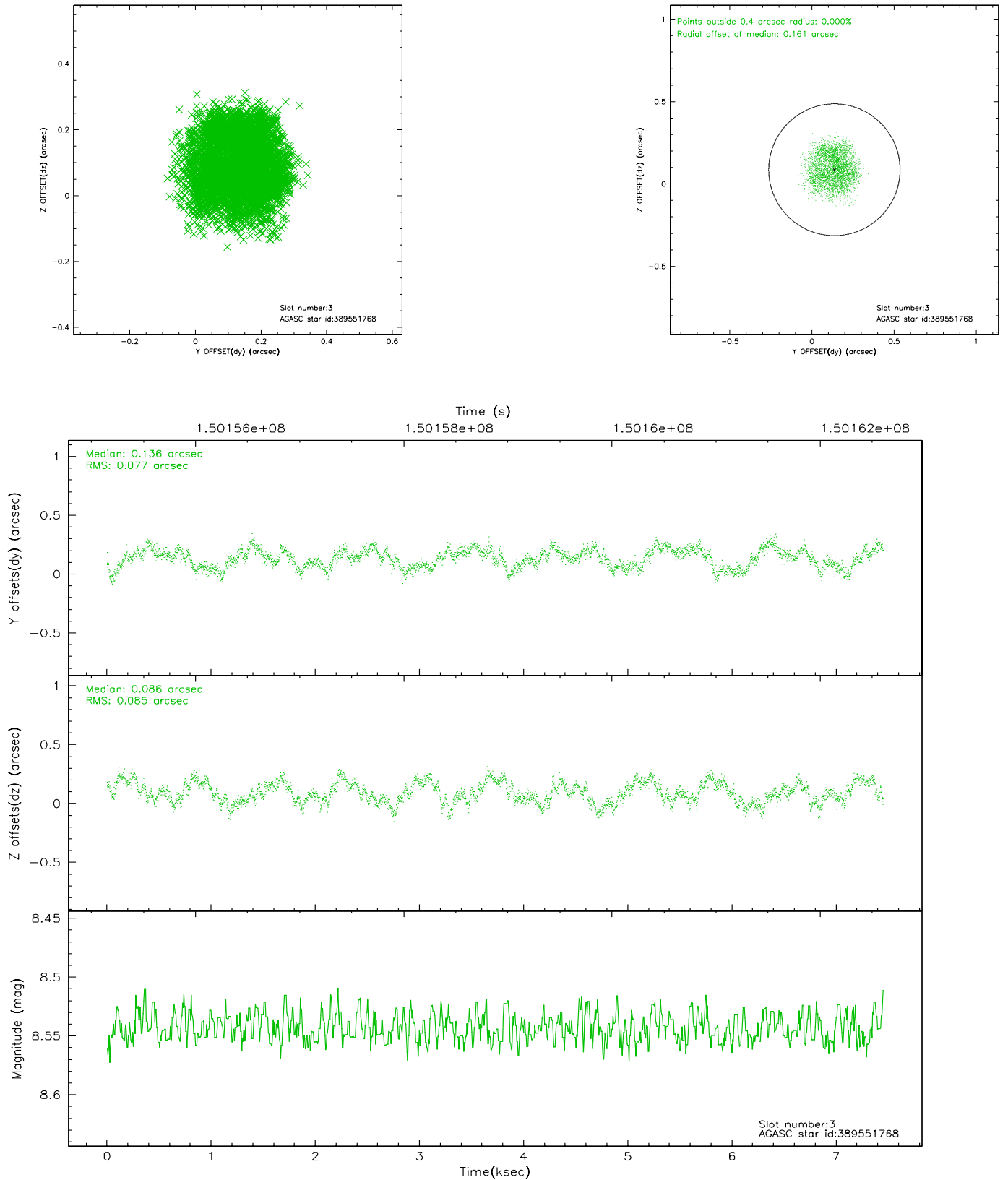


Slot Statistics

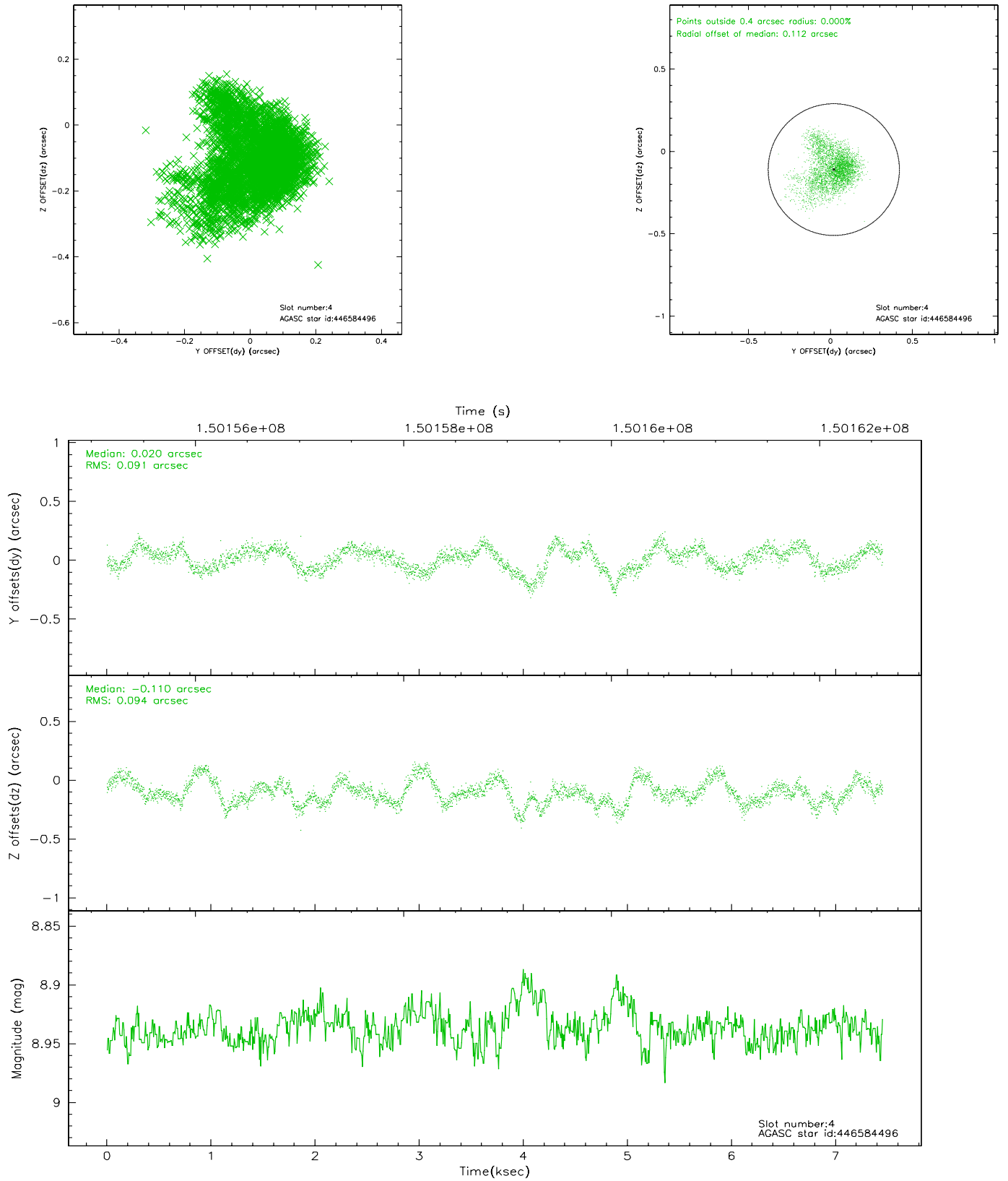
slot	status	id	mag	n_pts	med_dy	med_dz	dr1	dr2	ra	dec	mean_y	mean_z
0	FID	ACIS-S-2	7.11	1818	0.002	0.018	0.007	0.011	0.000000	0.000000	-755.51	-1729.38
1	FID	ACIS-S-4	7.20	1818	-0.055	-0.006	0.005	0.009	0.000000	0.000000	2157.38	178.27
2	FID	ACIS-S-5	7.24	1818	0.021	-0.003	0.006	0.010	0.000000	0.000000	-1807.33	172.84
3	GUIDE	389551768	8.54	3635	0.136	0.086	0.129	0.182	119.819971	44.851778	-170.10	-1622.16
4	GUIDE	446584496	8.94	3633	0.020	-0.110	0.136	0.235	119.228964	45.450262	1438.62	451.78
5	GUIDE	446584000	9.17	3635	-0.176	-0.183	0.122	0.189	119.002392	45.530960	1548.85	1084.16
6	GUIDE	389546112	9.25	3634	0.109	0.145	0.460	0.602	119.384051	44.647002	-1206.74	-778.74
7	GUIDE	446586104	9.98	3634	-0.119	0.092	0.150	0.232	119.831654	45.415911	1773.73	-1037.75

2.4 Star Slots

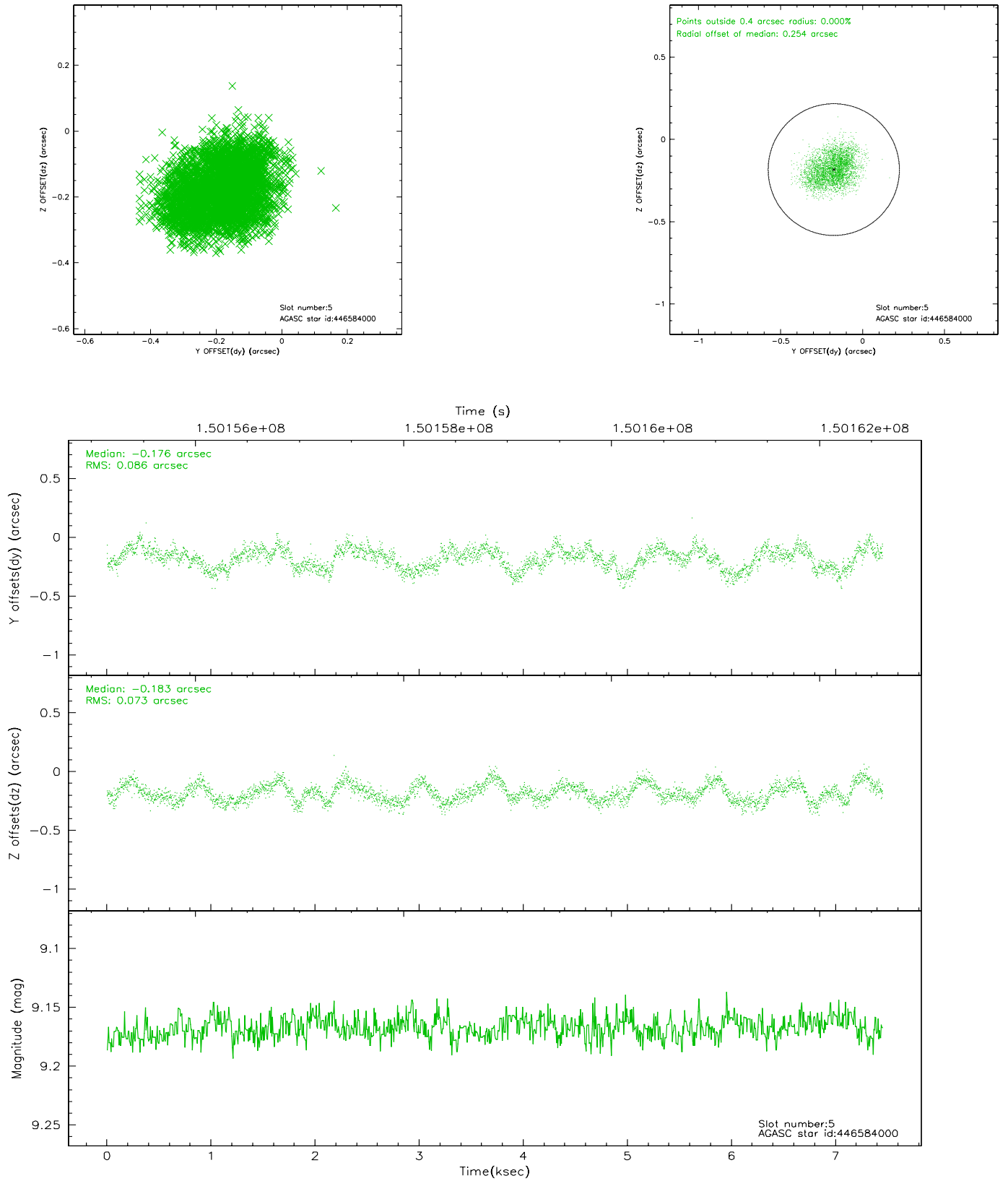
2.4.1 Slot 3



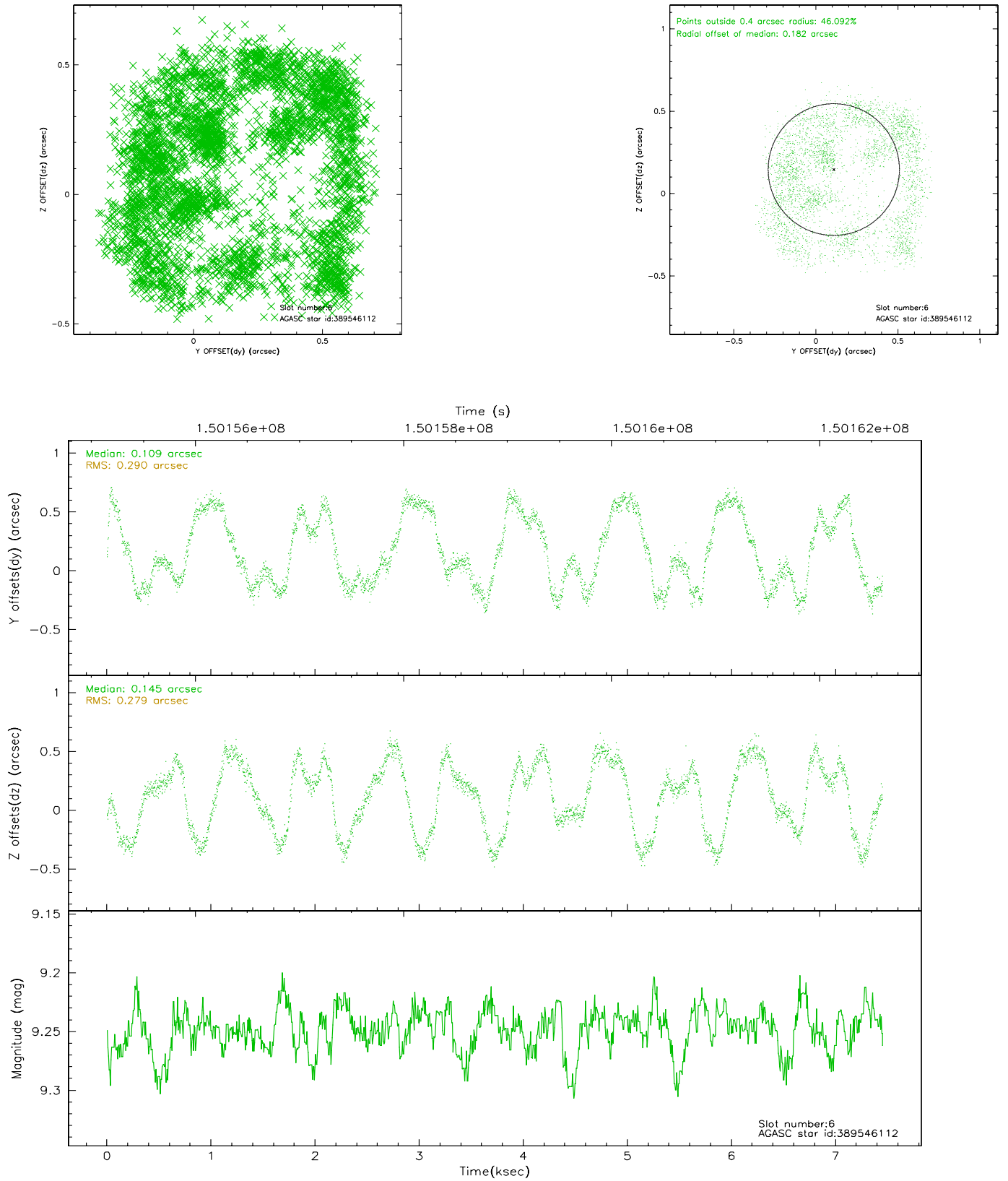
2.4.2 Slot 4



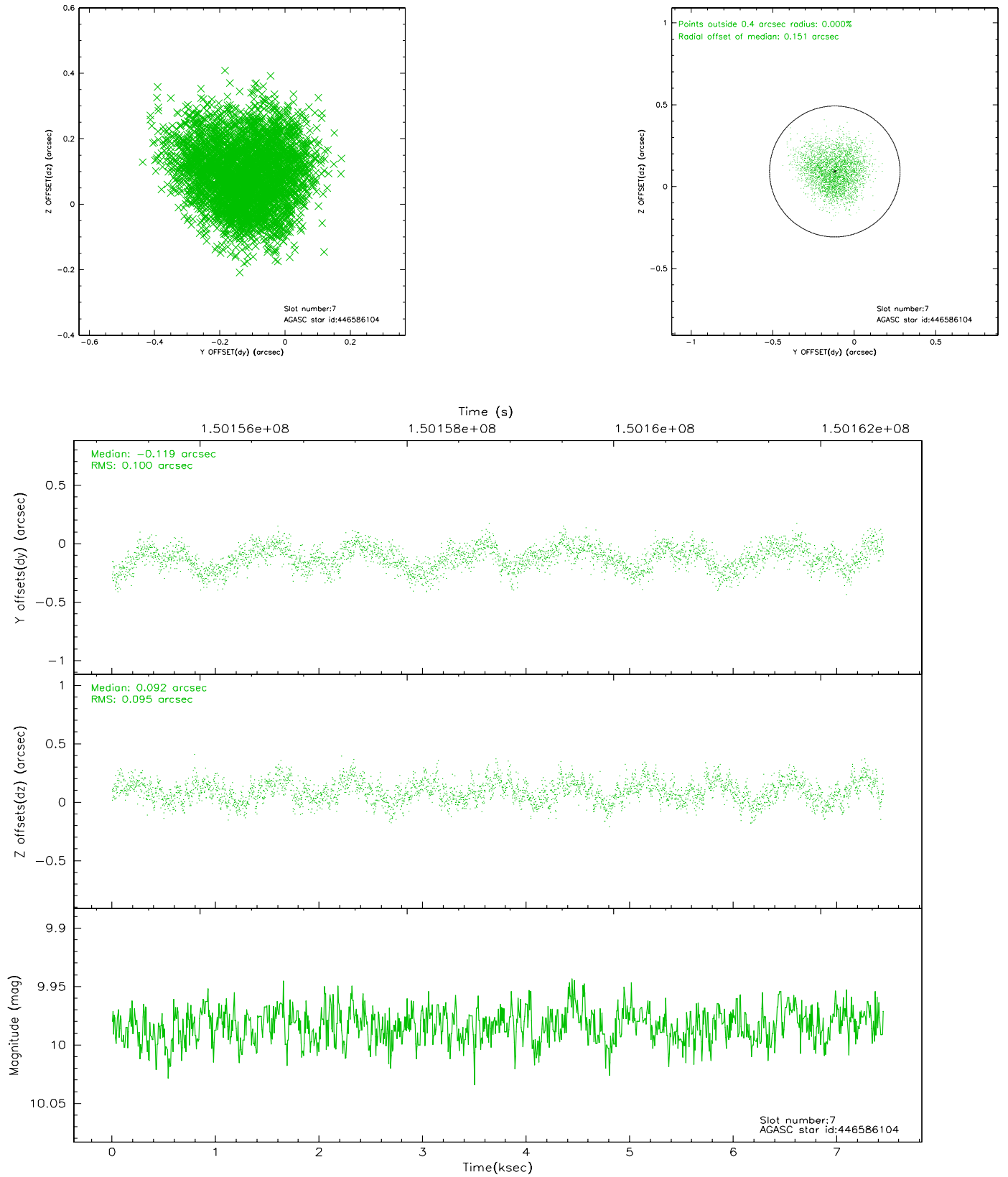
2.4.3 Slot 5



2.4.4 Slot 6

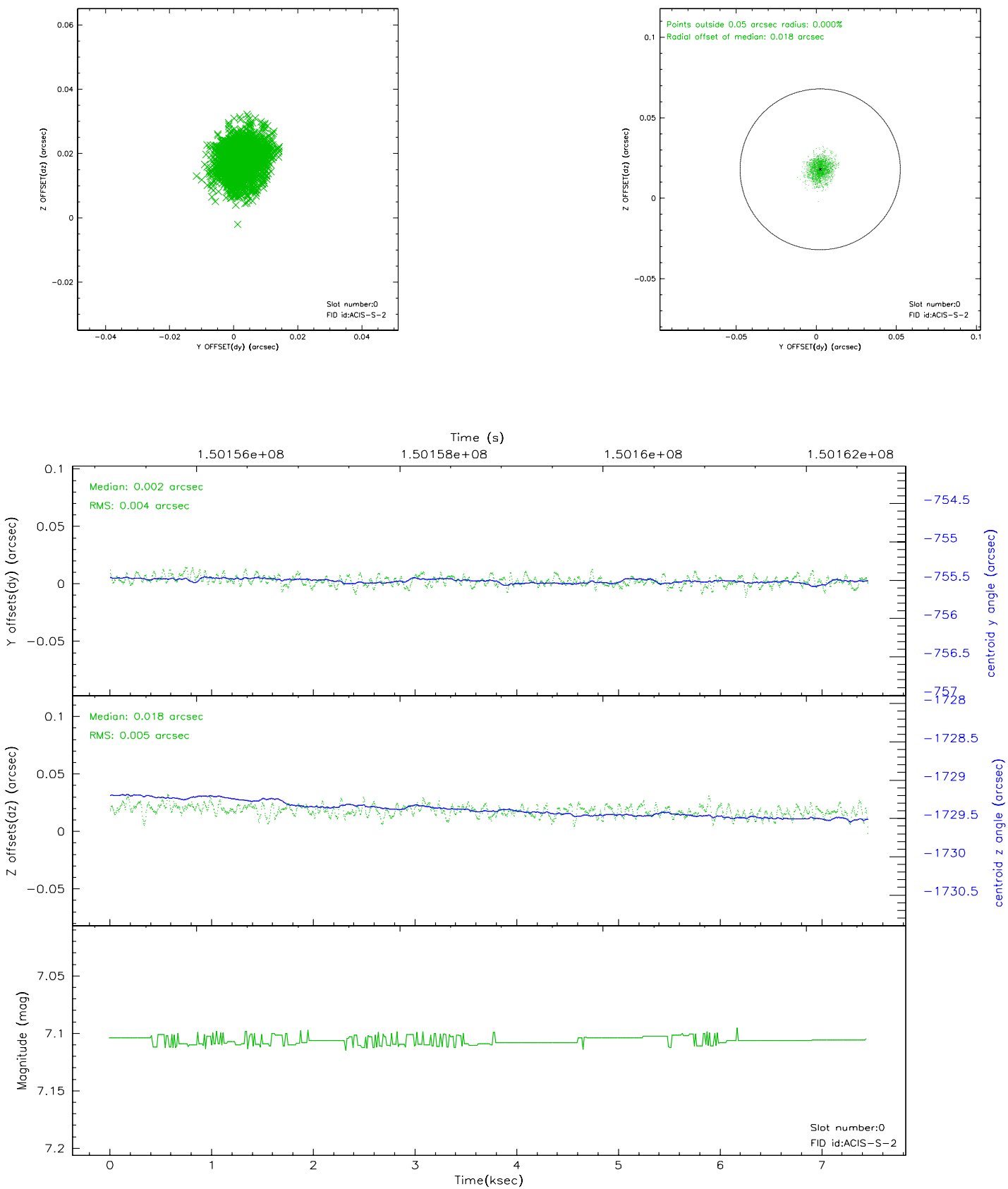


2.4.5 Slot 7

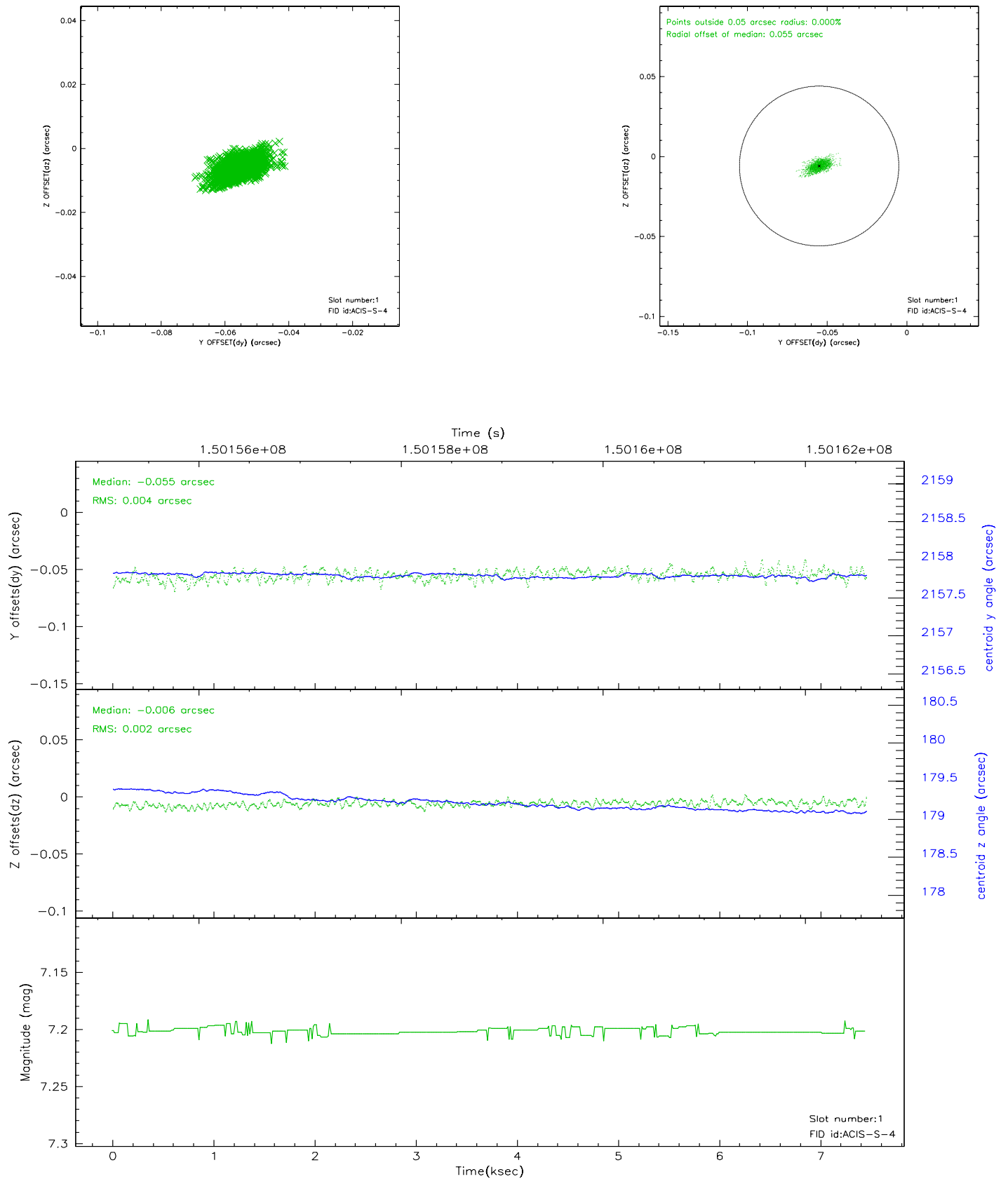


2.5 FID Slots

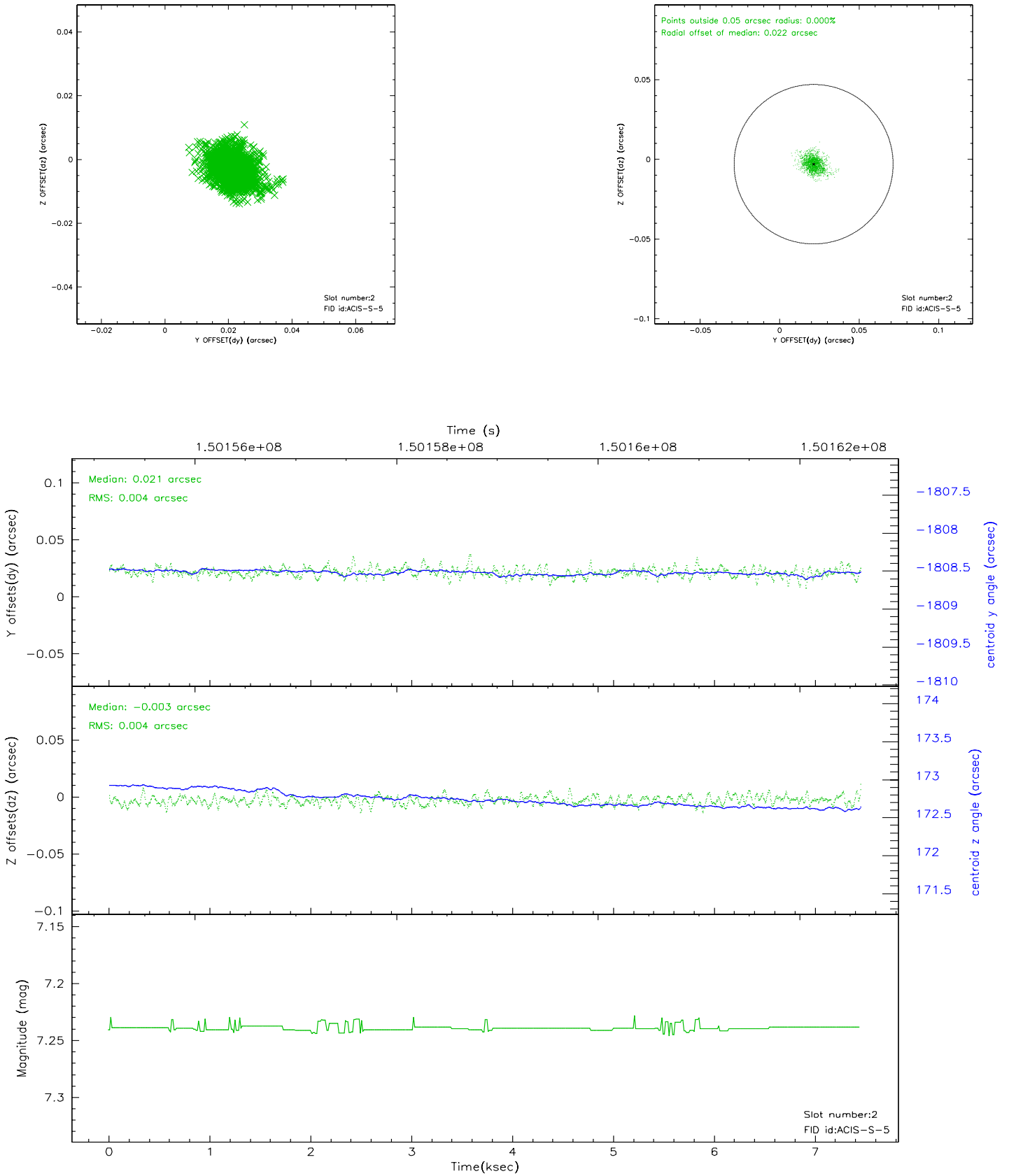
2.5.1 Slot 0



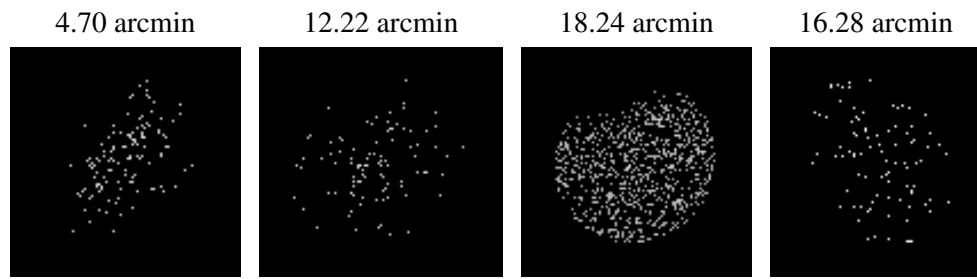
2.5.2 Slot 1



2.5.3 Slot 2



3 Point Sources



A Summary

A.1 Status

V&V Scientist	Jen Lauer
V&V Date (YYYY-MM-DD)	2006.10.06
V&V Edition	1
V&V Disposition and Status	OK
V&V Charge Time	7.055

A.2 Comments

Focal plane temperature is warmer than -118.7 C degrees during the first 2.5 ksec of this observation. The ACIS spectral response calibration for the front-illuminated chips is less accurate at these warmer temperatures than it is at -119.7 C. The back-illuminated chips are not affected at the focal plane temperatures recorded for this observation. Users whose science objectives depend on the most accurate spectral response (i.e.: fitting line-rich spectra) may notice an effect. Users whose science objectives do not depend on the most accurate spectral response should not notice an effect.