

V&V Reference Report

L2 ASCDS Version : 7.6.9

Observation 3031 - L2 Version 001
Chandra X-Ray Center

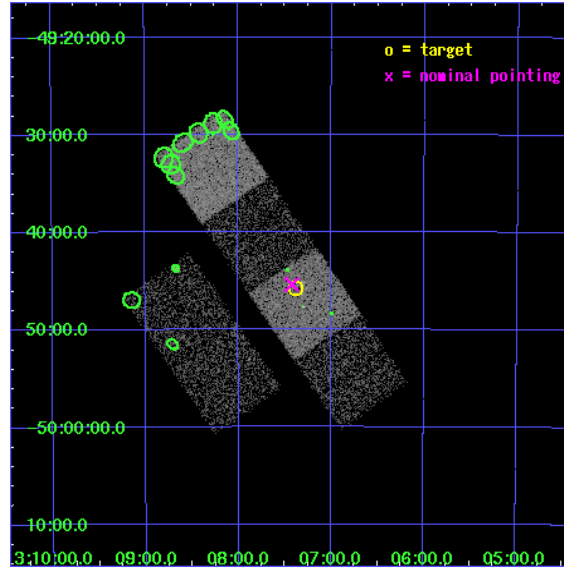
L2 Processing Date : Oct 4 2006

Contents

1	Front	2
2	OBI	3
2.1	OBI	3
2.1.1	Images	3
2.1.2	Bias	3
2.1.3	Parameters	4
2.1.4	Events	4
2.2	Compared Parameters	5
2.3	Aspect	6
2.4	Star Slots	9
2.4.1	Slot 3	9
2.4.2	Slot 4	10
2.4.3	Slot 5	11
2.4.4	Slot 6	12
2.4.5	Slot 7	13
2.5	FID Slots	14
2.5.1	Slot 0	14
2.5.2	Slot 1	15
2.5.3	Slot 2	16
3	Point Sources	17
A	Summary	18
A.1	Status	18
A.2	Comments	18

1 Front

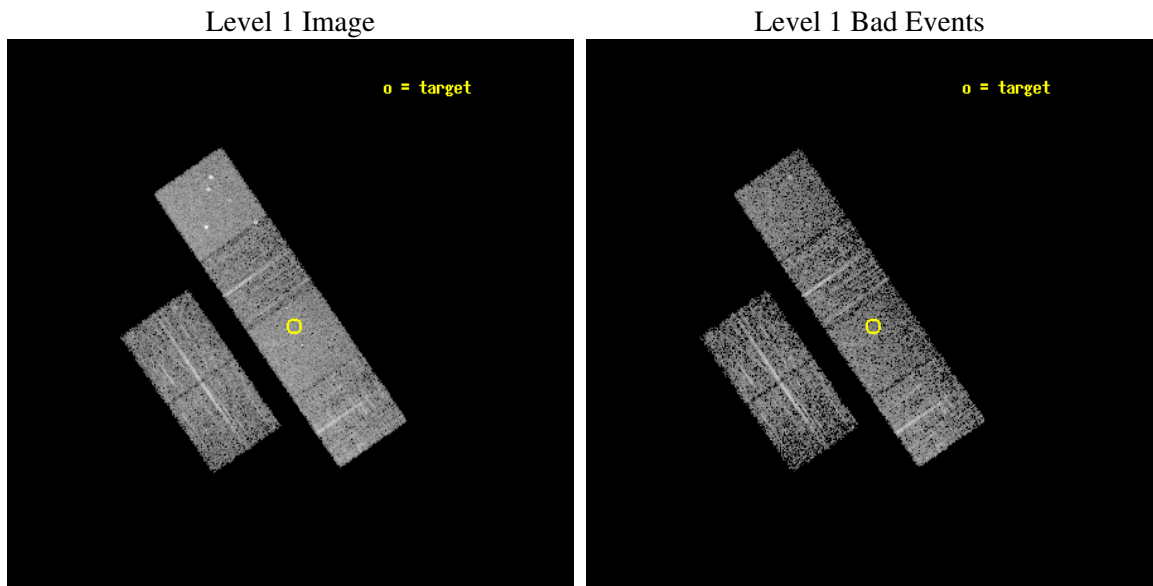
seq_num	700470
obs_id	3031
title	A CHANDRA AND XMM-NEWTON STUDY OF THE MOST DISTANT QUASARS: X-RAYING THE FIRST MASSIVE BLACK HOLES
observer	Prof. William Brandt
object	BR B0305-4957
dtcycle	0
cycle	P
ra_targ	46.845417
dec_targ	-49.763333
ra_nom	46.855915949732
dec_nom	-49.756457054365
roll_nom	55.439551415891
revision	2
ontime	3753.5590157509
livetime	3706.0291913716
ontime2	3753.5590157509
ontime3	3753.5590157509
ontime5	3753.5590157509
ontime6	3753.5590157509
ontime7	3753.5590157509
ontime8	3750.3180554807
l2events	34603



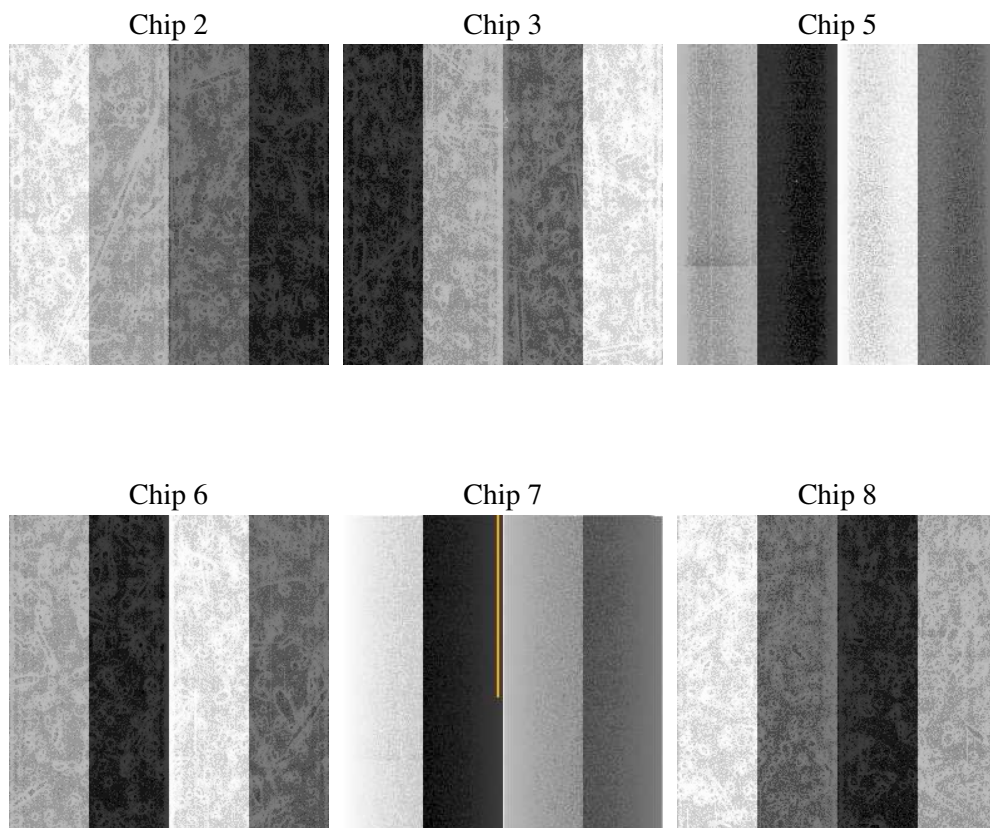
2 OBI

2.1 OBI

2.1.1 Images



2.1.2 Bias



2.1.3 Parameters

obi_num	0
ascdsver	7.6.9
caldsver	3.2.3
date	2006-10-04T15:12:57
revision	2

sched_exp_time	4000.000000
ontime	3756.3196050823
ontime2	3756.3196050823
ontime3	3756.3196050823
ontime5	3756.3196050823
ontime6	3756.3196050823
ontime7	3756.3196050823
ontime8	3753.0785152316
l1events	166561

2.1.4 Events

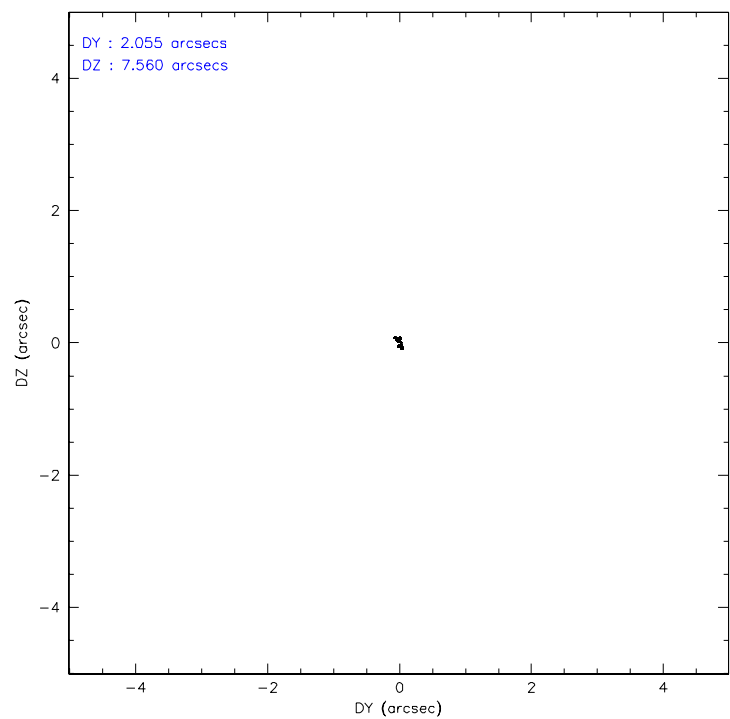
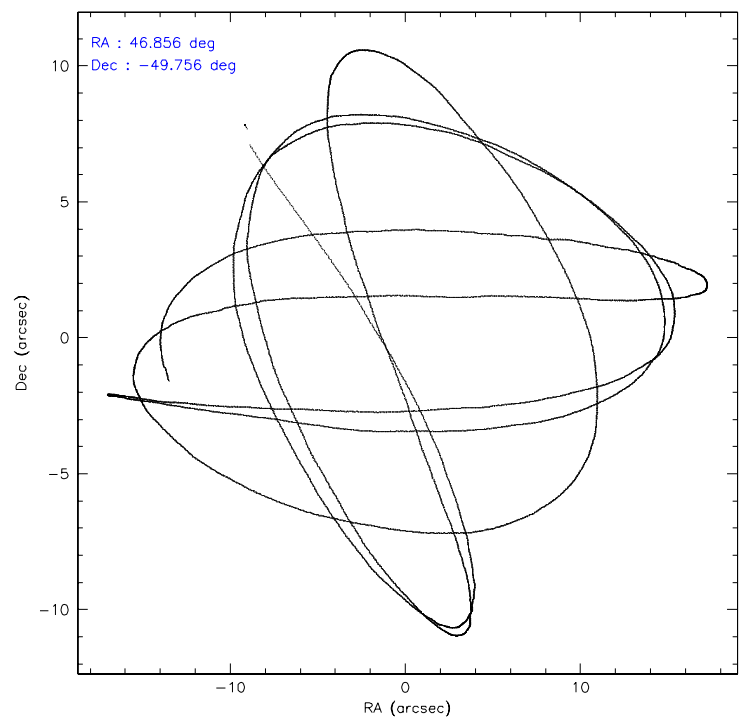
	ccd 2	ccd 3	ccd 5	ccd 6	ccd 7	ccd 8
level 1 events	23417	22519	34564	23007	30478	32576
rejected events	20674	19916	18927	20366	18898	26331
rejected %	88%	88%	54%	88%	62%	80%

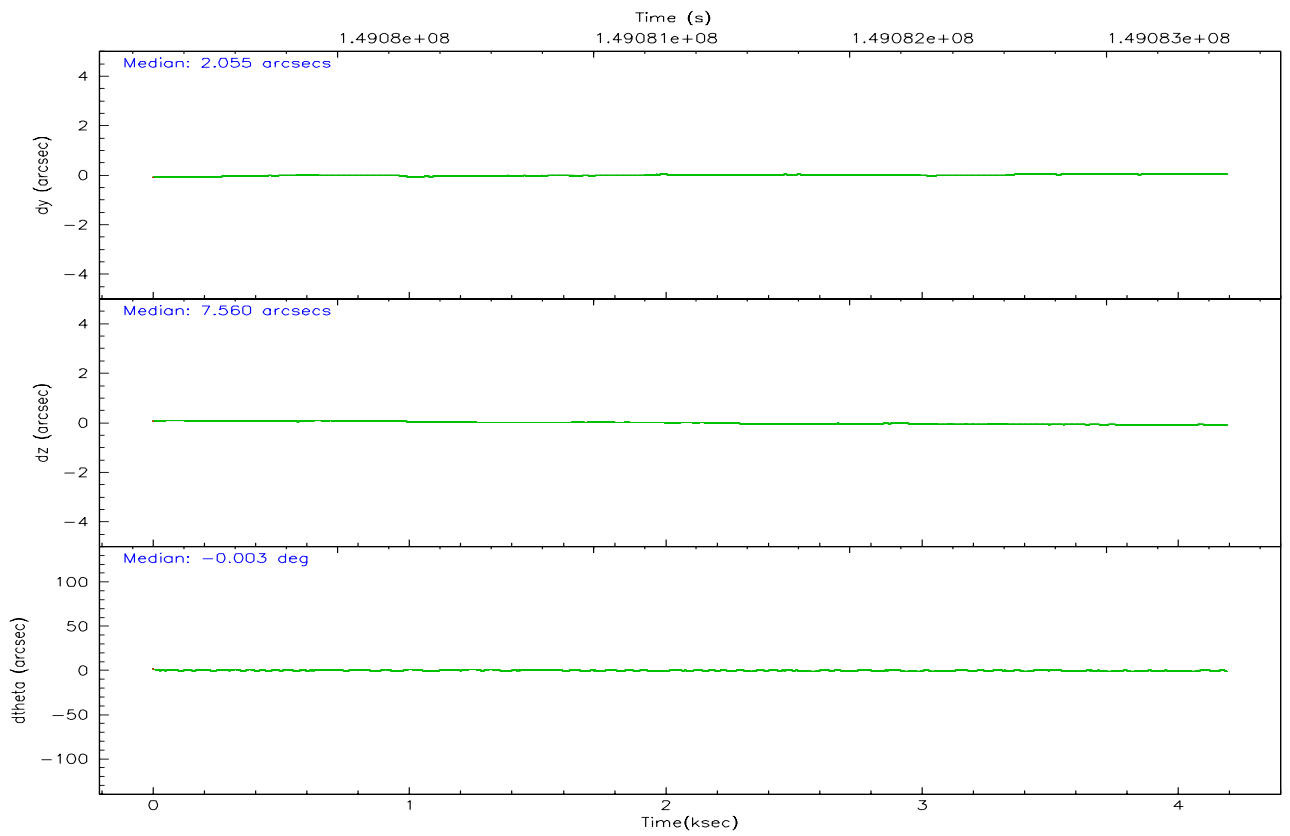
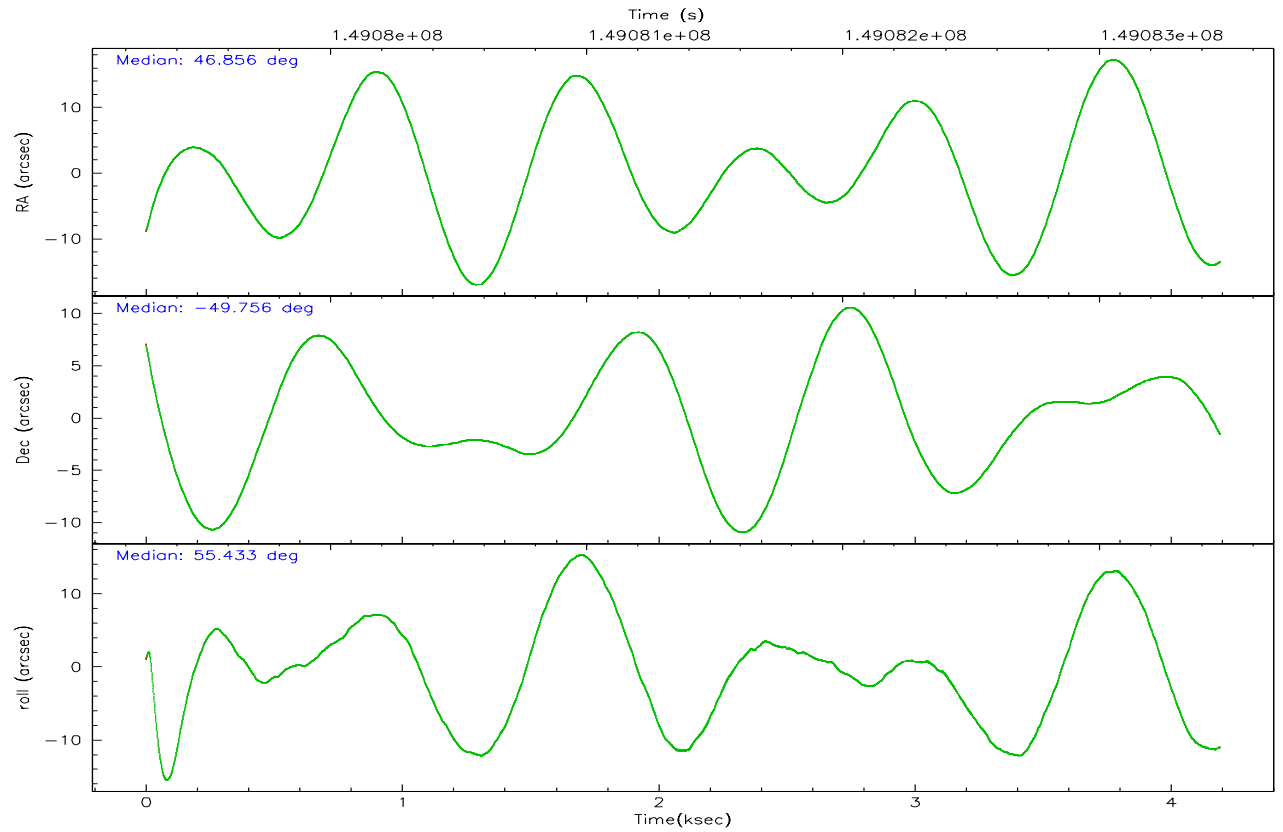
	ccd 2	ccd 3	ccd 5	ccd 6	ccd 7	ccd 8
grade 0 events	1262	1159	2003	1085	726	1958
	5%	5%	5%	4%	2%	6%
grade 1 events	19	11	121	9	19	22
	0%	0%	0%	0%	0%	0%
grade 2 events	521	509	4500	493	2826	1257
	2%	2%	13%	2%	9%	3%
grade 3 events	268	261	385	265	607	729
	1%	1%	1%	1%	1%	2%
grade 4 events	259	261	328	301	596	636
	1%	1%	0%	1%	1%	1%
grade 5 events	896	982	1654	1053	1950	1292
	3%	4%	4%	4%	6%	3%
grade 6 events	434	417	8438	501	6841	1666
	1%	1%	24%	2%	22%	5%
grade 7 events	19758	18919	17135	19300	16913	25016
	84%	84%	49%	83%	55%	76%

2.2 Compared Parameters

Parameter	Planned	Actual	Parameter	Planned	Actual
Instrument	ACIS	ACIS	Obspar format version number	6	6
Detector	ACIS-235678	ACIS-235678	Obspar file type	PREDICTED	ACTUAL
Grating	NONE	NONE	Obspar update status	NONE	UPDATED
Data mode	FAINT	FAINT	Number of optional ACIS chips dropped	0	0
Observation mode	POINTING	POINTING	On-chip summing requested	N	N
Pointing RA	46.853156	46.85591594973209	Subarray requested	NONE	NONE
Pointing Dec	-49.783636	-49.75645705436472	Alternating exposures requested	N	N
Pointing Roll	55.280731	55.43955141589114	Primary exposure time	0.000000	3.2
SIM focus pos (mm)	-0.684267	-0.6828225247311905			
SIM defocus (mm)	0	0.001444936568705701			
SIM translation stage pos (mm)	-190.132523	-190.1400660498719			
SIM translation stage offset (mm)	0	0.00754346686406393			
Observation start time	149079471.184000	149078735.53092			
Observation start date	2002-09-22T10:56:47	2002-09-22T10:45:35			
Observation end time	149083471.184000	149084698.46866			
Observation end date	2002-09-22T12:03:27	2002-09-22T12:24:58			
Read mode	TIMED	TIMED			

2.3 Aspect



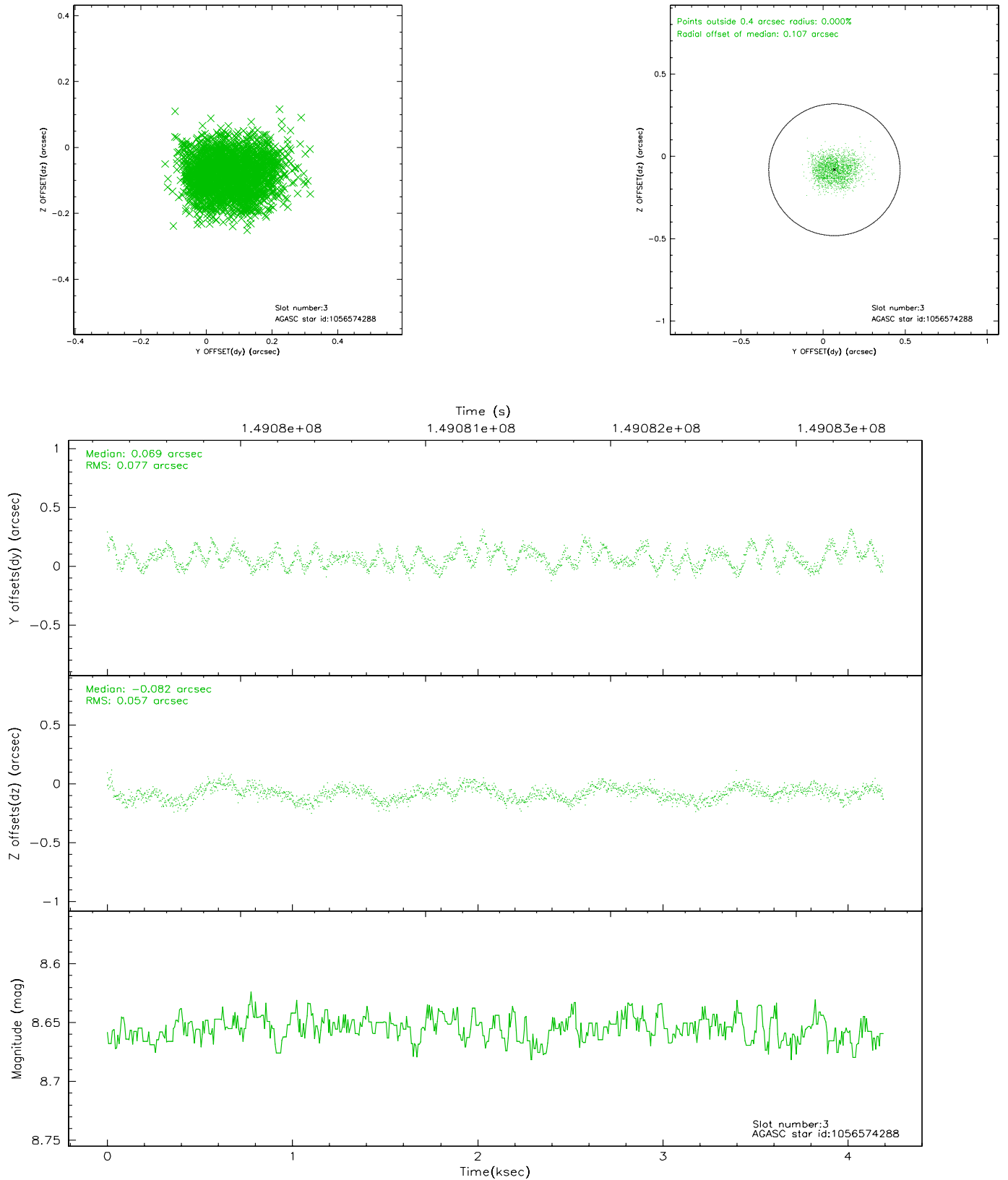


Slot Statistics

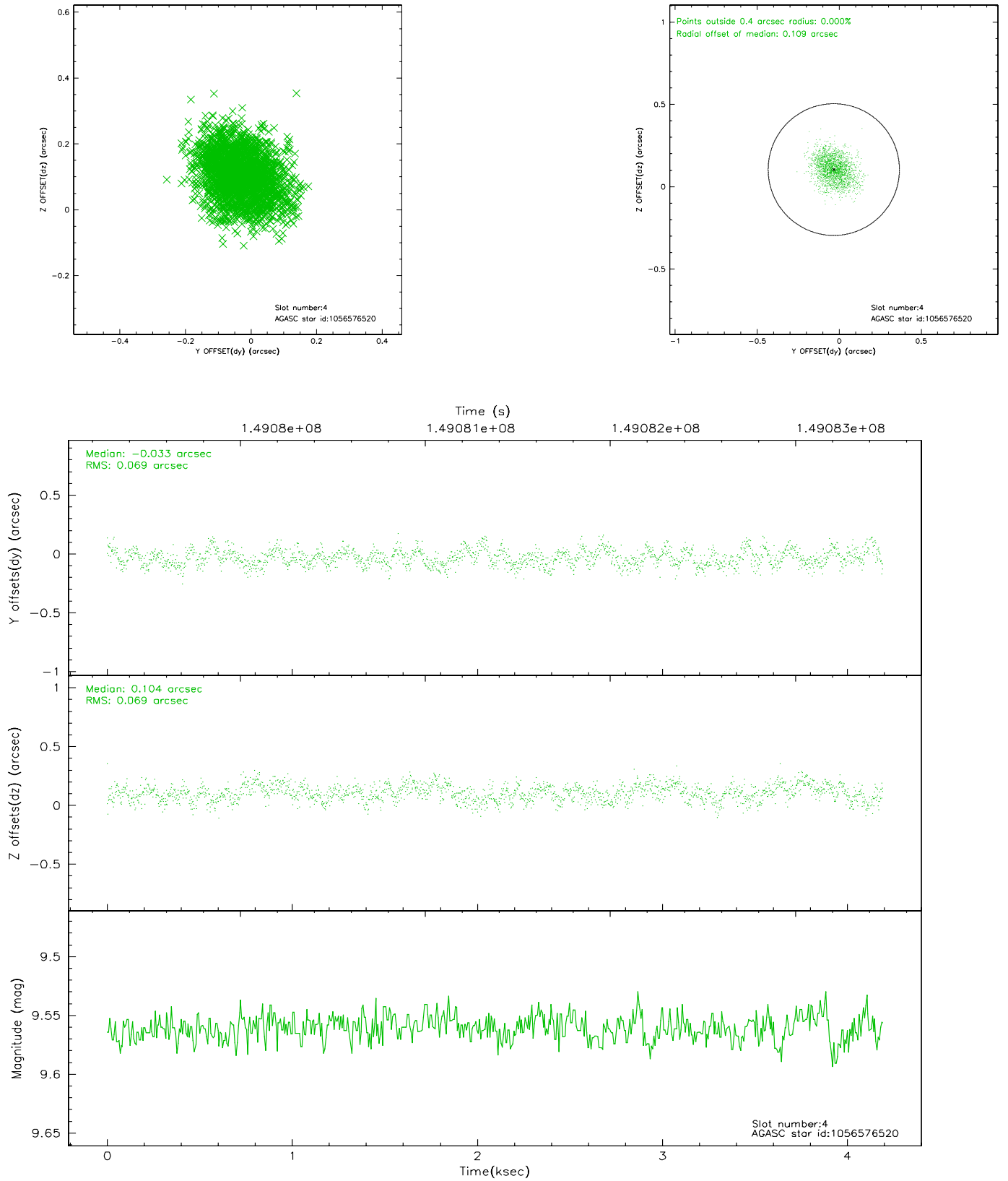
slot	status	id	mag	n_pts	med_dy	med_dz	dr1	dr2	ra	dec	mean_y	mean_z
0	FID	ACIS-S-2	7.11	1020	-0.008	0.027	0.007	0.012	0.000000	0.000000	-754.70	-1728.70
1	FID	ACIS-S-4	7.21	1020	-0.076	-0.003	0.006	0.012	0.000000	0.000000	2157.86	178.19
2	FID	ACIS-S-5	7.24	1020	0.052	-0.015	0.006	0.011	0.000000	0.000000	-1805.54	173.58
3	GUIDE	1056574288	8.66	2041	0.069	-0.082	0.103	0.159	45.678978	-49.864822	-1809.97	2061.13
4	GUIDE	1056576520	9.56	2030	-0.033	0.104	0.105	0.167	46.462566	-49.508743	290.22	1314.62
5	GUIDE	1056578176	10.15	2041	0.002	-0.011	0.114	0.190	47.201797	-49.284572	1941.52	350.18
6	GUIDE	1056579096	10.07	2040	-0.108	-0.081	0.127	0.217	47.144507	-49.246961	1977.34	537.85
7	GUIDE	1056968512	9.99	2040	0.070	0.074	0.120	0.192	47.235655	-50.355235	-1191.79	-1894.66

2.4 Star Slots

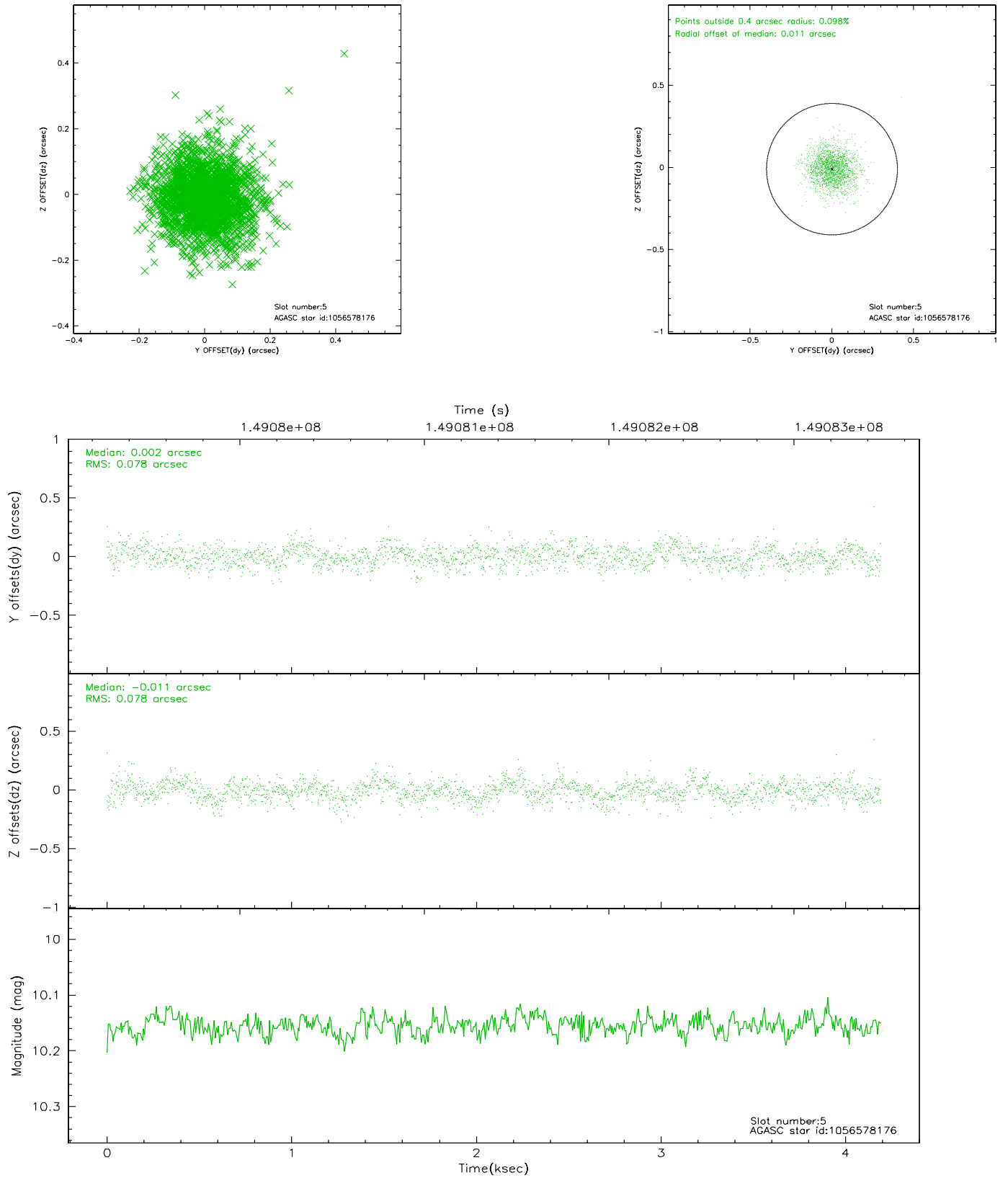
2.4.1 Slot 3



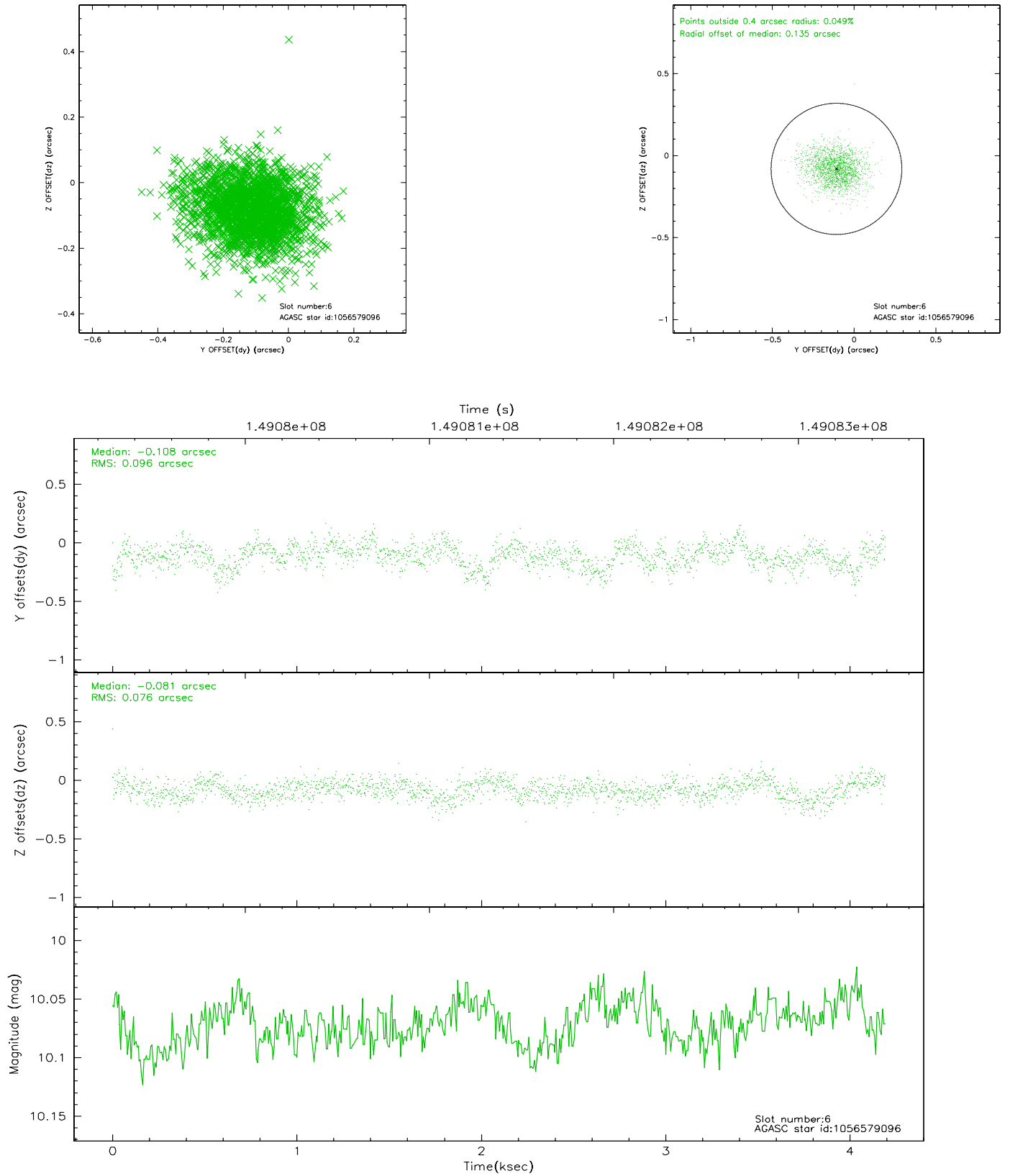
2.4.2 Slot 4



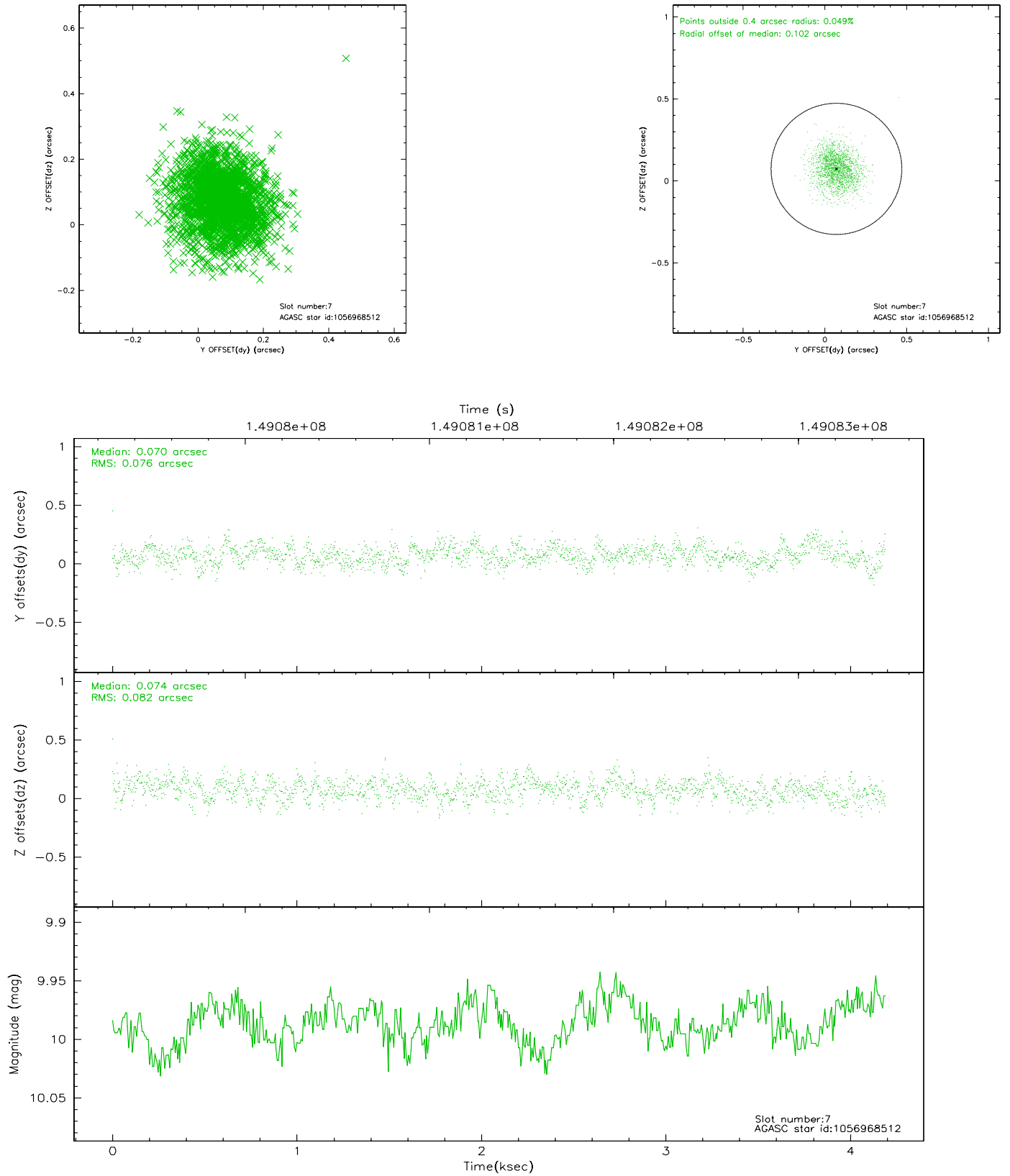
2.4.3 Slot 5



2.4.4 Slot 6

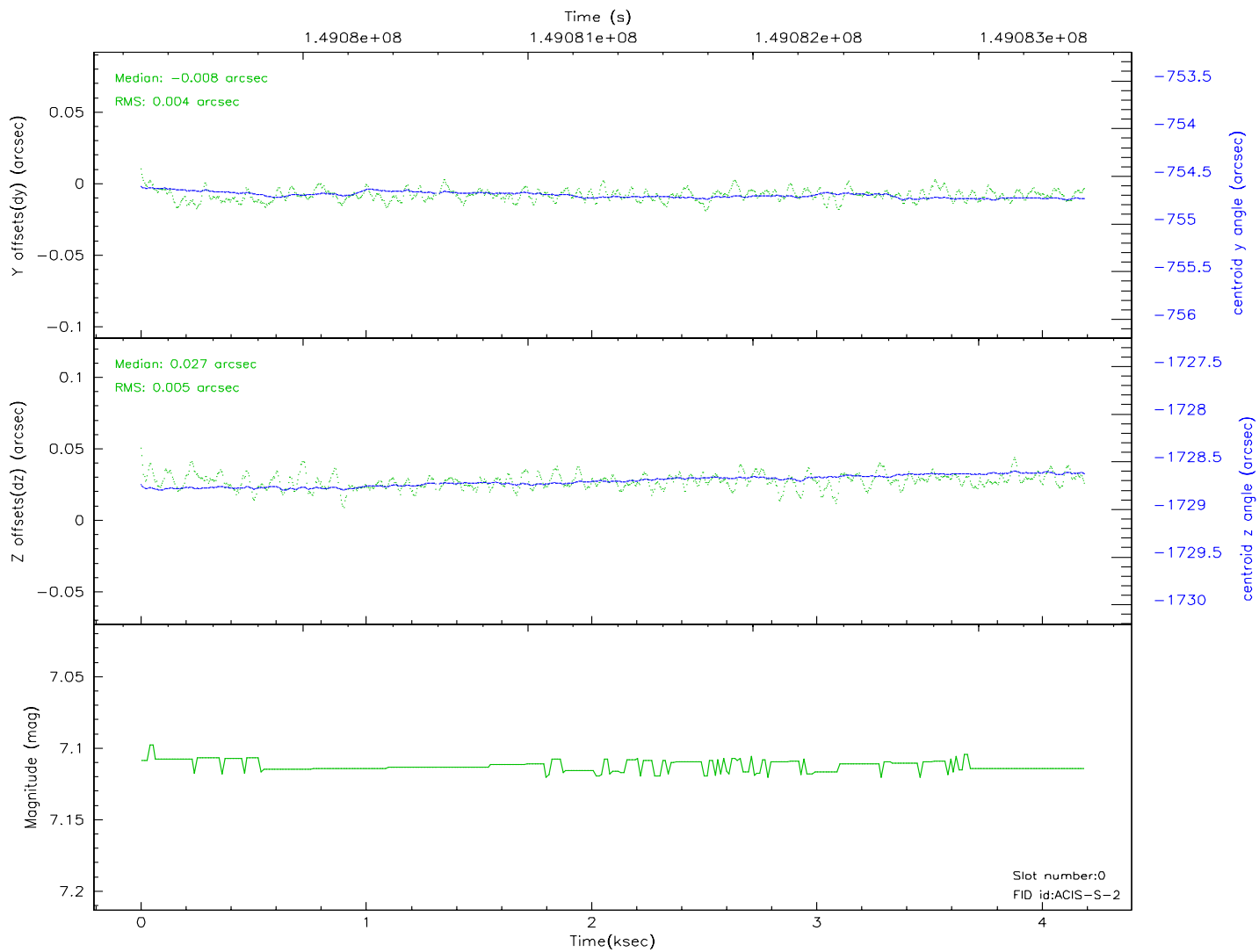
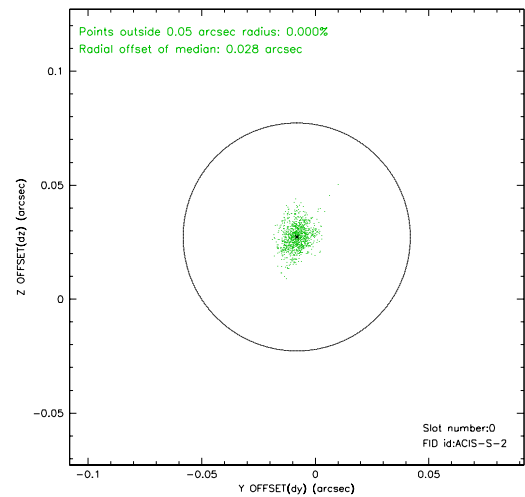
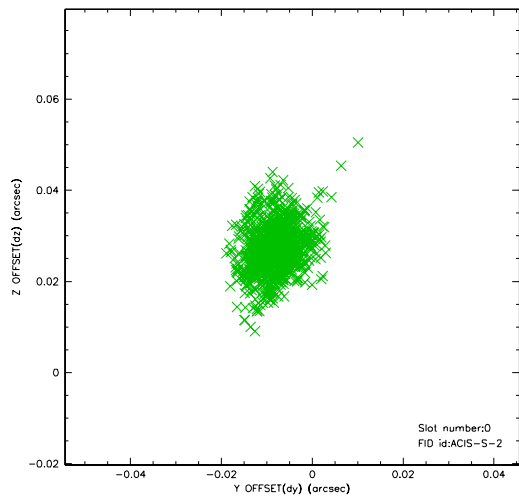


2.4.5 Slot 7

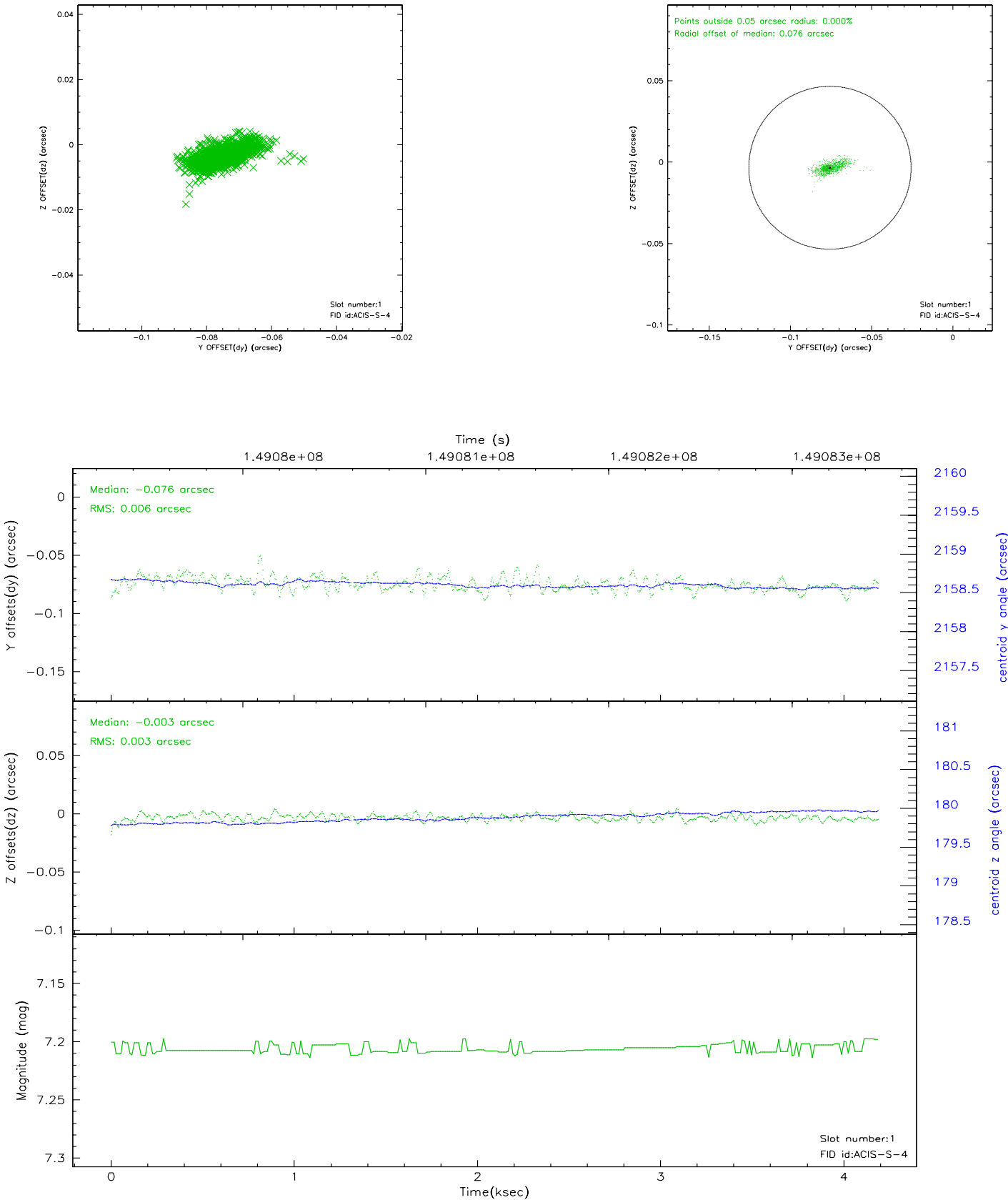


2.5 FID Slots

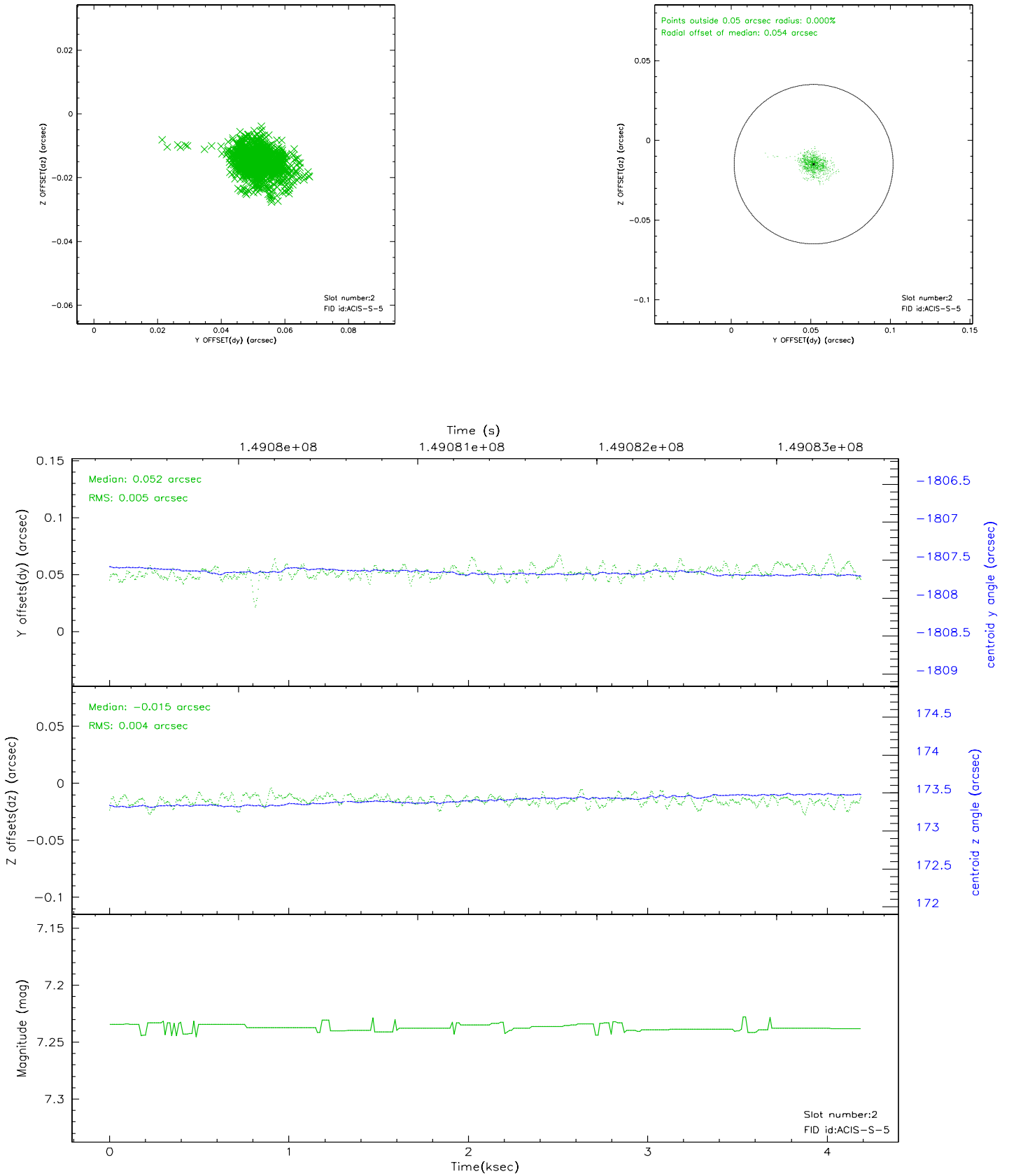
2.5.1 Slot 0



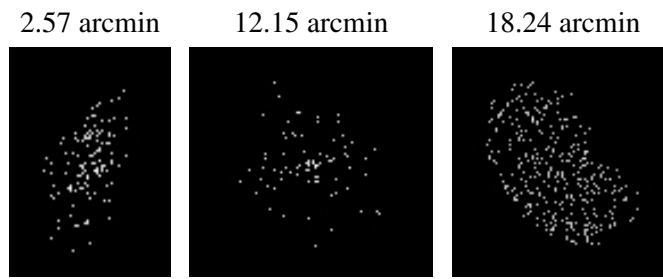
2.5.2 Slot 1



2.5.3 Slot 2



3 Point Sources



A Summary

A.1 Status

V&V Scientist	Jen Lauer
V&V Date (YYYY-MM-DD)	2006.10.04
V&V Edition	1
V&V Disposition and Status	OK
V&V Charge Time	3.753

A.2 Comments