

V&V Reference Report

L2 ASCDS Version : 7.6.9

Observation 3016 - L2 Version 001
Chandra X-Ray Center

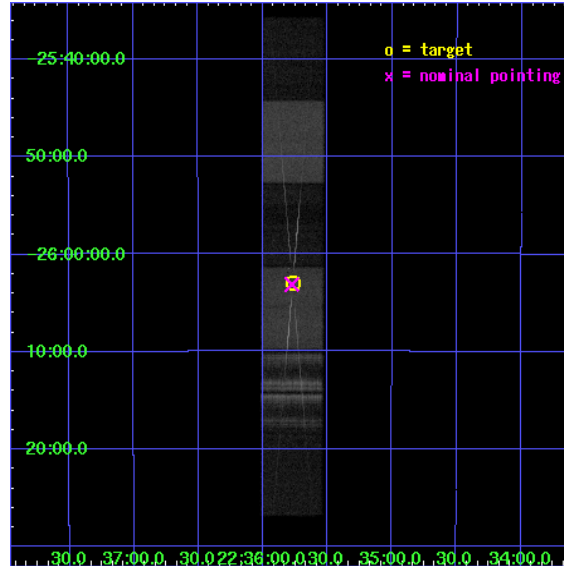
L2 Processing Date : Sep 26 2006

Contents

1	Front	2
2	OBI	3
2.1	OBI	3
2.1.1	Images	3
2.1.2	Bias	3
2.1.3	Parameters	4
2.1.4	Events	4
2.2	Compared Parameters	5
2.3	Aspect	6
2.4	Star Slots	9
2.4.1	Slot 3	9
2.4.2	Slot 4	10
2.4.3	Slot 5	11
2.4.4	Slot 6	12
2.4.5	Slot 7	13
2.5	FID Slots	14
2.5.1	Slot 0	14
2.5.2	Slot 1	15
2.5.3	Slot 2	16
3	Gratings	17
3.1	HEG Arm	17
3.2	MEG Arm	19
A	Summary	21
A.1	Status	21
A.2	Comments	21

1 Front

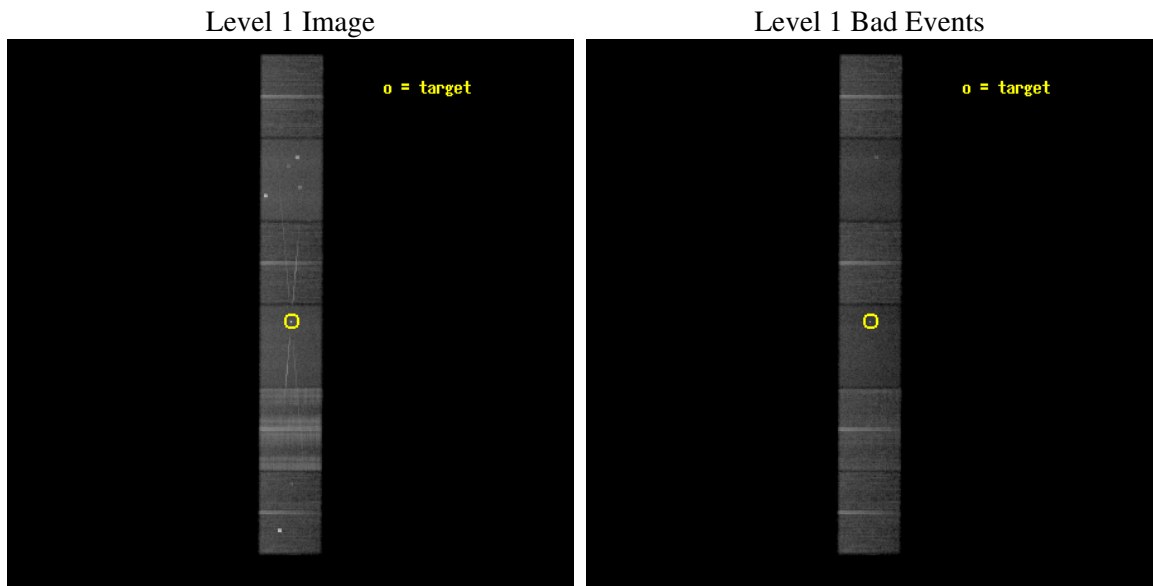
seq_num	700455
obs_id	3016
title	DECONVOLUTION OF THE RELATIVISTIC FE-K LINES IN ACTIVE GALAXIES AND PHYSICS FROM THE NARROW EMISSION COMPONENT
observer	Dr. Tahir Yaqoob
object	NGC 7314
dtcycle	0
cycle	P
ra_targ	338.942083
dec_targ	-26.050611
ra_nom	338.94393862285
dec_nom	-26.052071983276
roll_nom	90.202258038871
revision	2
ontime	28875.0
livetime	28408.64370494
ontime4	28875.0
ontime5	28875.0
ontime6	28875.0
ontime7	28875.0
ontime8	28875.0
ontime9	28875.0
l2events	328595



2 OBI

2.1 OBI

2.1.1 Images

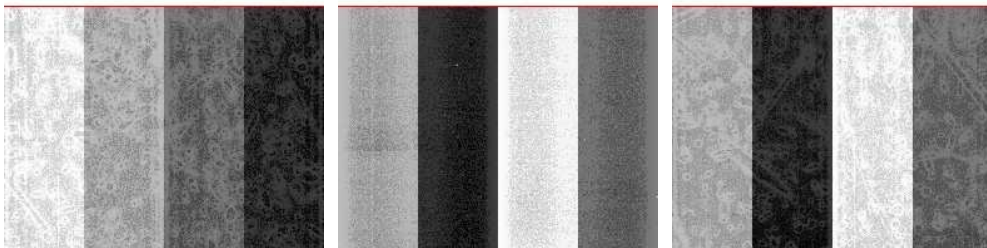


2.1.2 Bias

Chip 4

Chip 5

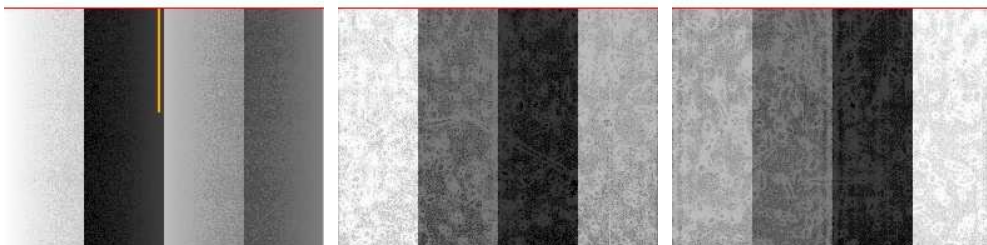
Chip 6



Chip 7

Chip 8

Chip 9



2.1.3 Parameters

obi_num	1
ascdsver	7.6.9
caldsver	3.2.3
date	2006-09-26T10:05:56
revision	2

sched_exp_time	28702.686000
ontime	28878.6150769
ontime4	28878.6150769
ontime5	28878.6150769
ontime6	28878.6150769
ontime7	28878.6150769
ontime8	28878.6150769
ontime9	28878.6150769
l1events	1370935

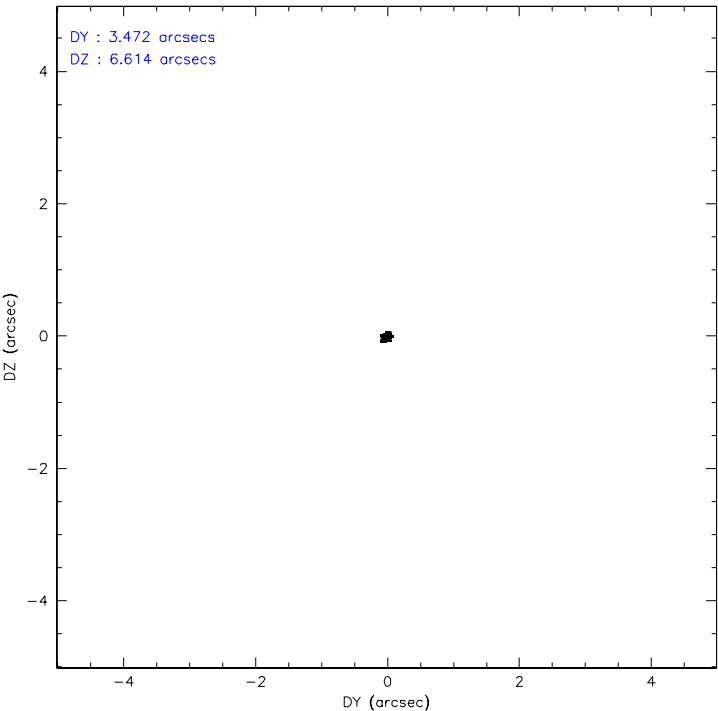
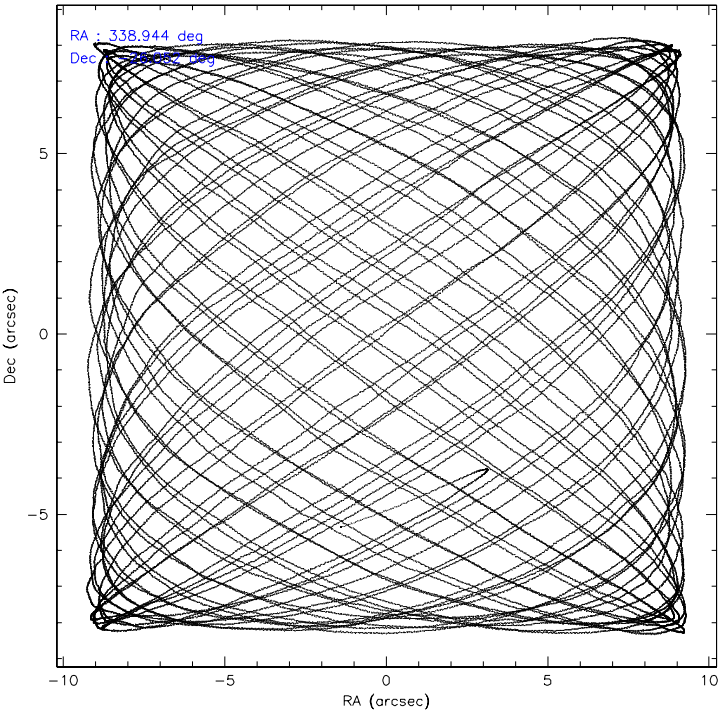
2.1.4 Events

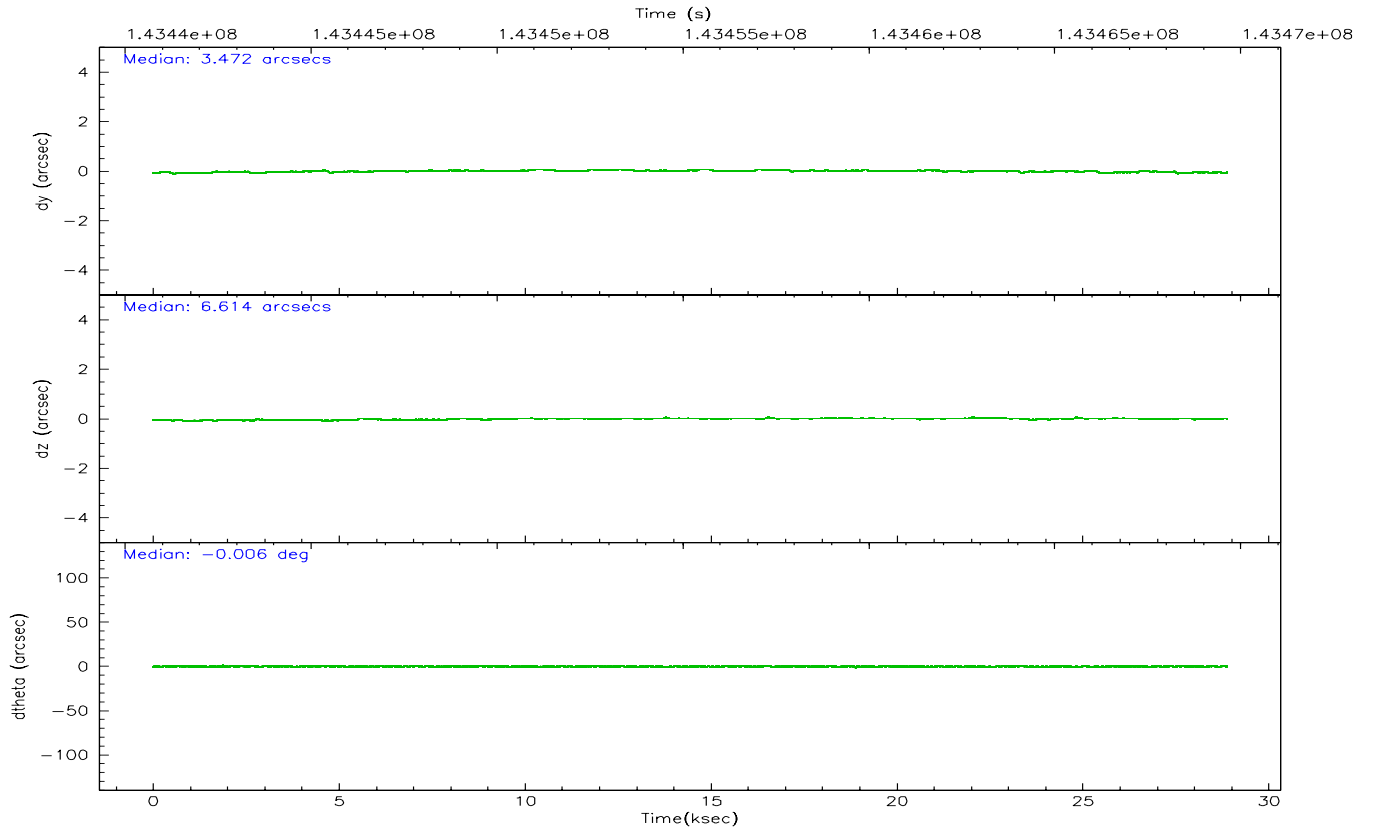
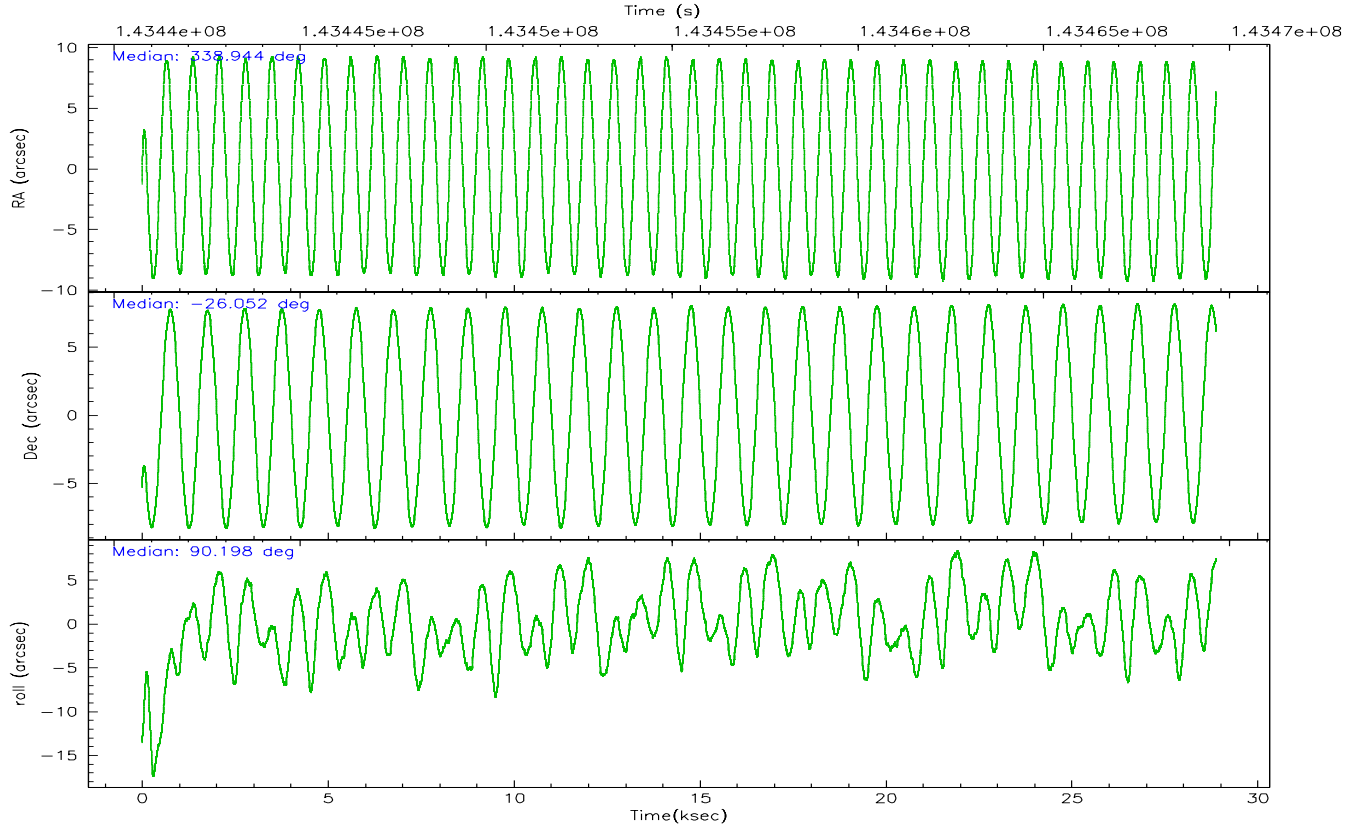
	ccd 4	ccd 5	ccd 6	ccd 7	ccd 8	ccd 9		ccd 4	ccd 5	ccd 6	ccd 7	ccd 8	ccd 9
level 1 events	197288	236429	190663	220418	342371	183766	grade 0 events	13099	16913	15892	7904	49822	21586
rejected events	166055	123650	157606	122256	183226	147081		6%	7%	8%	3%	14%	11%
rejected %	84%	52%	82%	55%	53%	80%	grade 1 events	118	728	103	238	400	133
								0%	0%	0%	0%	0%	0%
							grade 2 events	8948	32858	7319	24619	23324	5993
								4%	13%	3%	11%	6%	3%
							grade 3 events	2154	3515	2419	6559	27878	2120
								1%	1%	1%	2%	8%	1%
							grade 4 events	2144	3449	2319	6395	23928	1990
								1%	1%	1%	2%	6%	1%
							grade 5 events	5522	11076	6203	14564	9646	6443
								2%	4%	3%	6%	2%	3%
							grade 6 events	4895	56067	5115	52710	34224	5003
								2%	23%	2%	23%	9%	2%
							grade 7 events	160408	111823	151293	107429	173149	140498
								81%	47%	79%	48%	50%	76%

2.2 Compared Parameters

Parameter	Planned	Actual	Parameter	Planned	Actual
Instrument	ACIS	ACIS	Obspar format version number	6	6
Detector	ACIS-456789	ACIS-456789	Obspar file type	PREDICTED	ACTUAL
Grating	HETG	HETG	Obspar update status	NONE	UPDATED
Data mode	FAINT	FAINT	Number of optional ACIS chips dropped	0	0
Observation mode	POINTING	POINTING	On-chip summing requested	N	N
Pointing RA	338.959545	338.9439386228487	Subarray requested	CUSTOM	CUSTOM
Pointing Dec	-26.075430	-26.05207198327605	Subarray start row	1	1
Pointing Roll	90.052492	90.20225803887078	Subarray row count	774	774
SIM focus pos (mm)	-0.684267	-0.6828225247311905	Alternating exposures requested	N	N
SIM defocus (mm)	0	0.001444936568705701	Primary exposure time	0.000000	2.5
SIM translation stage pos (mm)	-187.132523	-187.1228876879999			
SIM translation stage offset (mm)	-3	-3.009634895007935			
Observation start time	143440927.184000	143439960.19846			
Observation start date	2002-07-19T04:41:03	2002-07-19T04:26:00			
Observation end time	143469629.184000	143469944.01219			
Observation end date	2002-07-19T12:39:25	2002-07-19T12:45:44			
Read mode	TIMED	TIMED			

2.3 Aspect



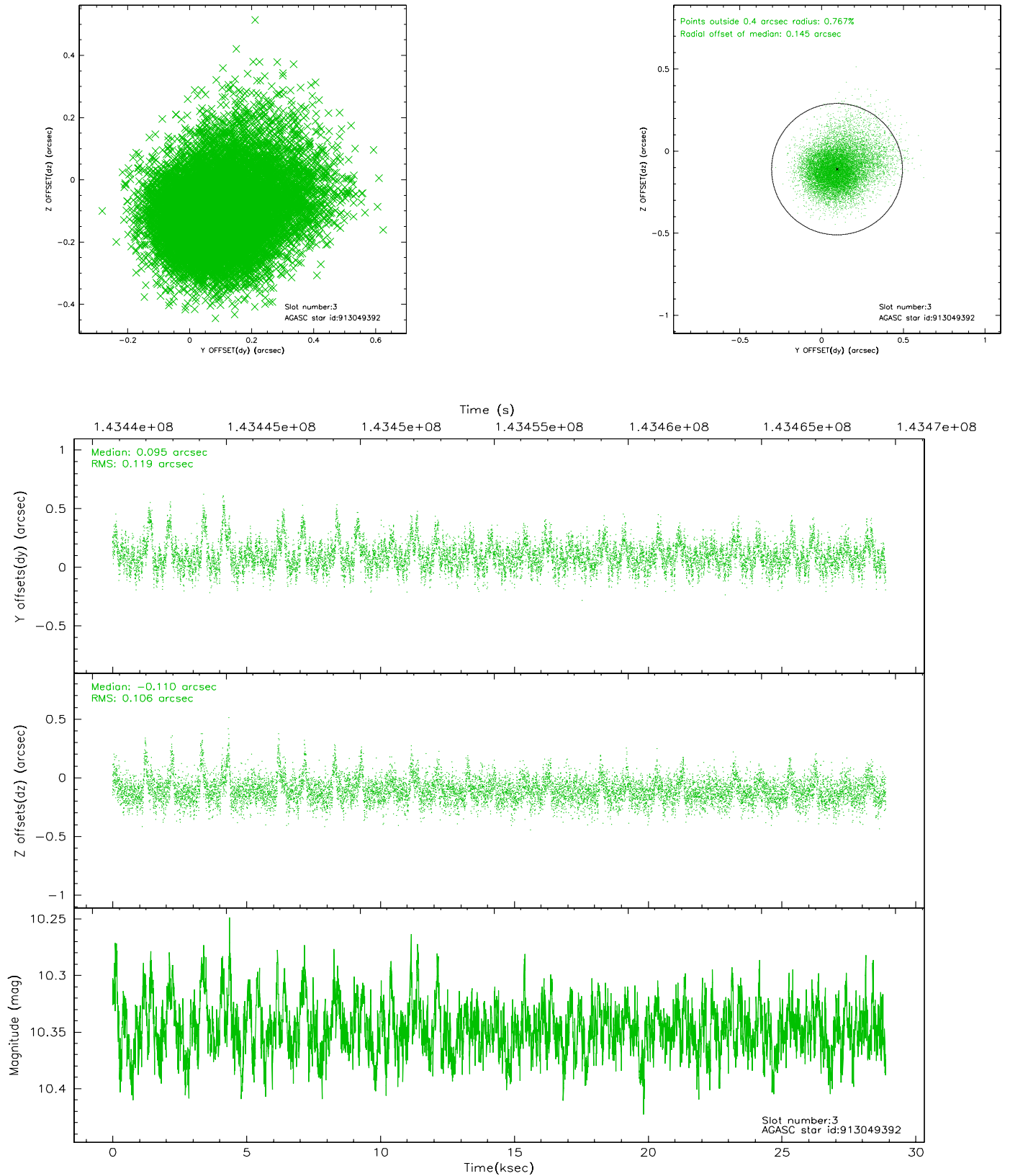


Slot Statistics

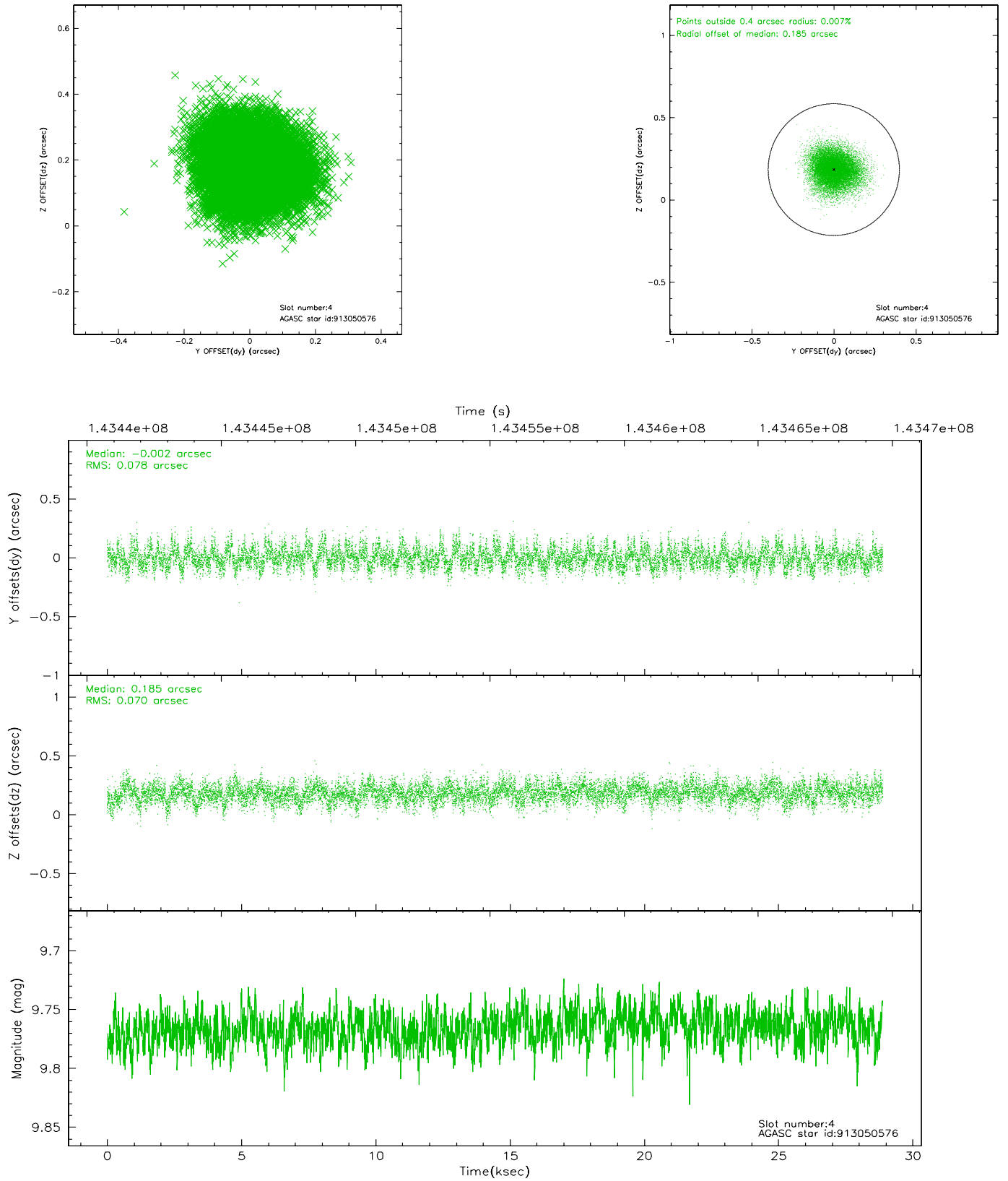
slot	status	id	mag	n_pts	med_dy	med_dz	dr1	dr2	ra	dec	mean_y	mean_z
0	FID	ACIS-S-1	7.19	7045	-0.004	0.082	0.006	0.011	0.000000	0.000000	940.13	-1785.44
1	FID	ACIS-S-5	7.24	7046	-0.012	0.025	0.006	0.010	0.000000	0.000000	-1808.84	111.95
2	FID	ACIS-S-6	7.38	7045	-0.006	-0.095	0.007	0.011	0.000000	0.000000	405.58	755.89
3	GUIDE	913049392	10.35	14082	0.095	-0.110	0.163	0.289	338.305127	-26.229898	-560.13	2112.74
4	GUIDE	913050576	9.77	14082	-0.002	0.185	0.112	0.181	339.398805	-25.857774	779.40	-1424.32
5	GUIDE	913055744	9.70	14076	0.136	0.033	0.114	0.189	339.034663	-26.334108	-931.91	-242.59
6	GUIDE	913051736	9.91	14009	-0.025	-0.147	0.150	0.240	338.239401	-25.803806	972.77	2332.11
7	GUIDE	913047808	9.42	14080	-0.212	0.030	0.108	0.175	338.934868	-25.449672	2252.06	77.60

2.4 Star Slots

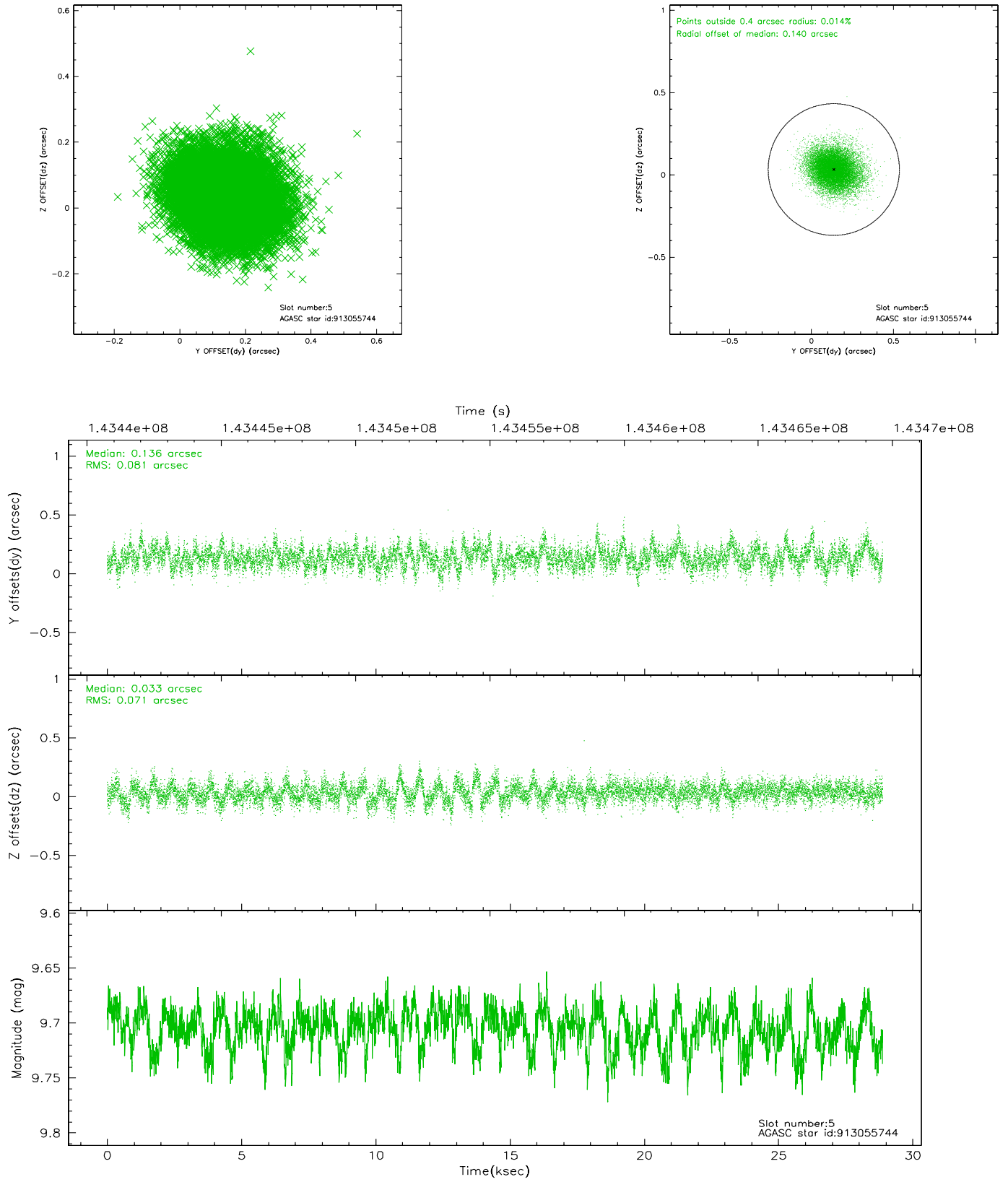
2.4.1 Slot 3



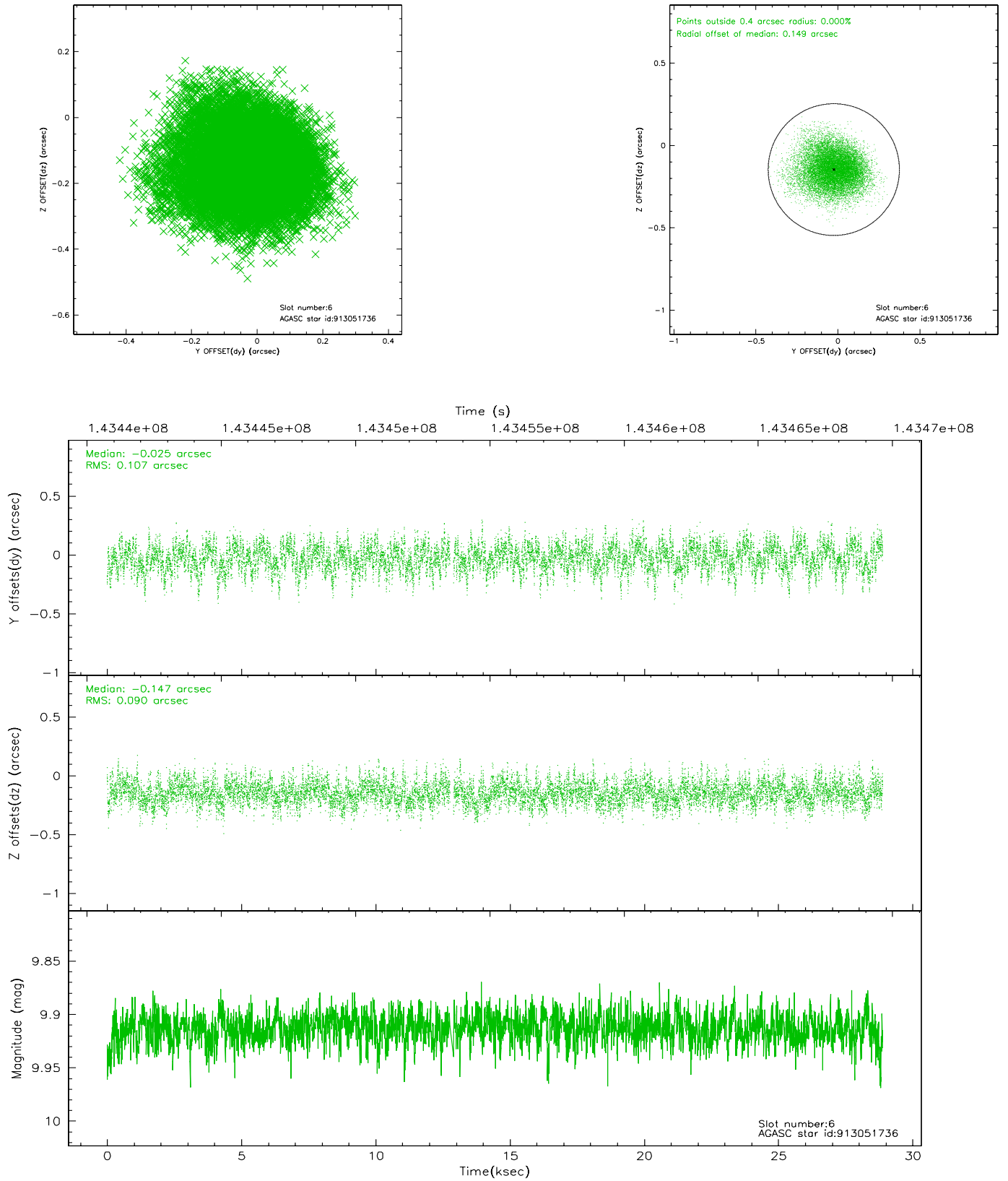
2.4.2 Slot 4



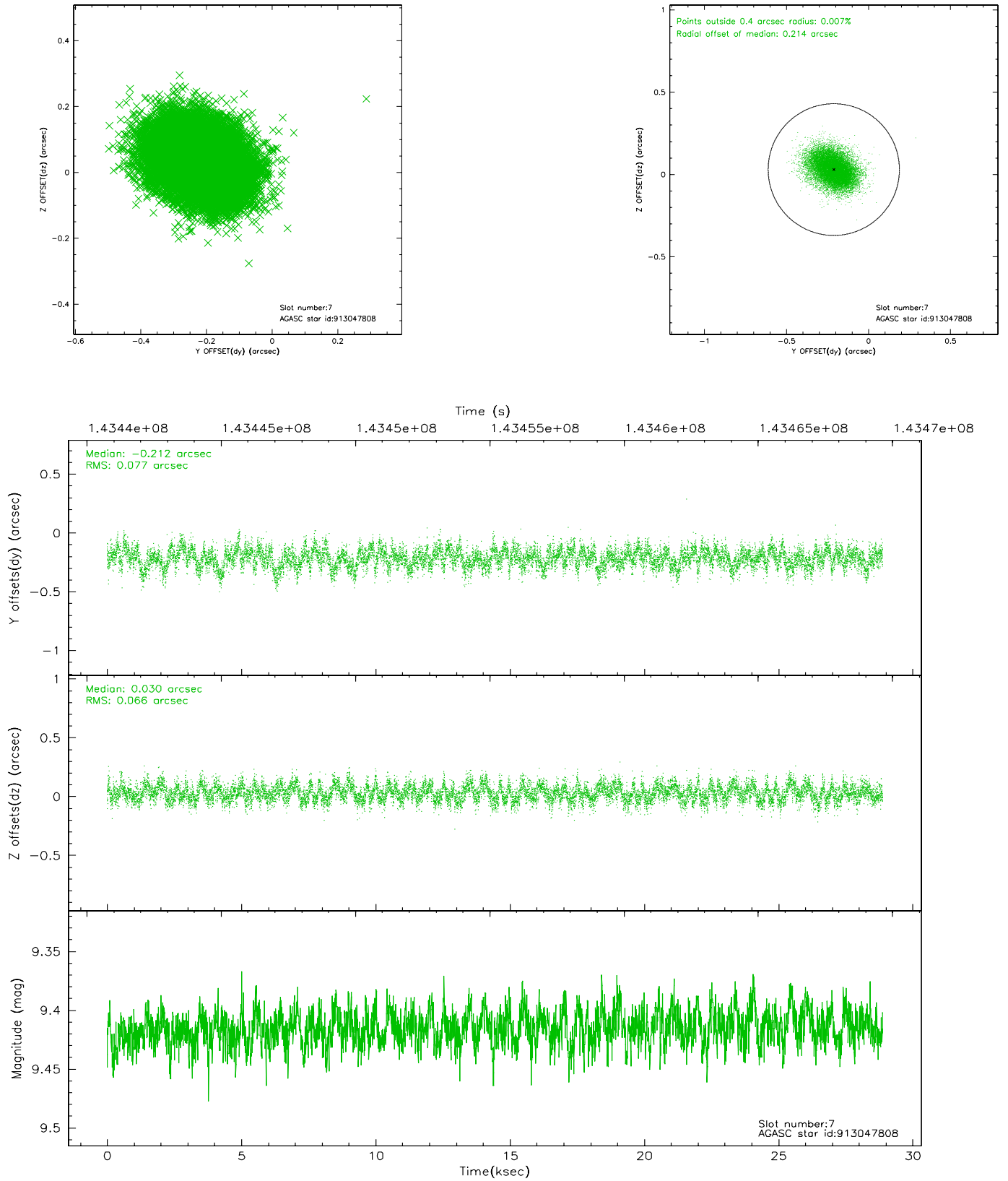
2.4.3 Slot 5



2.4.4 Slot 6

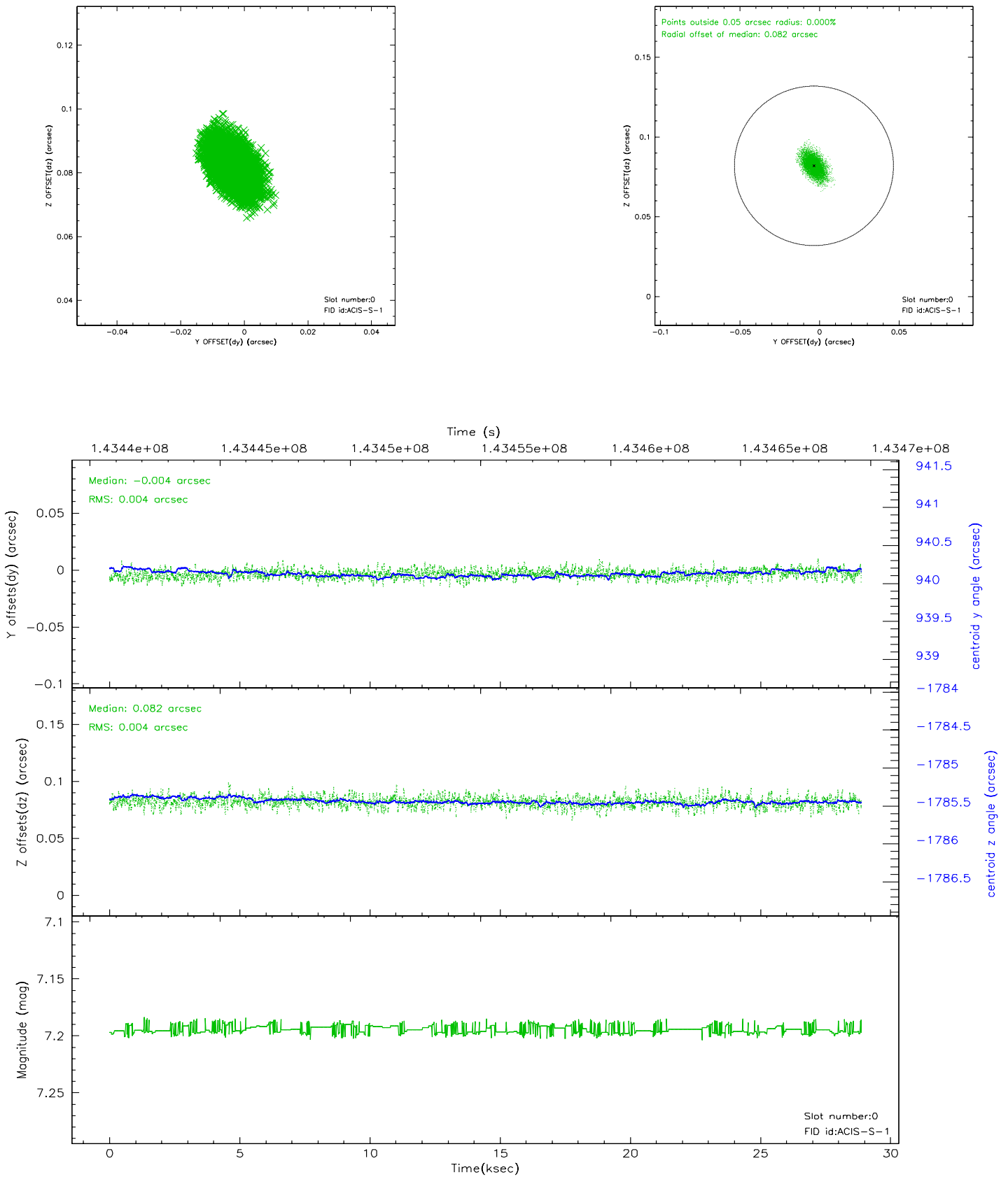


2.4.5 Slot 7

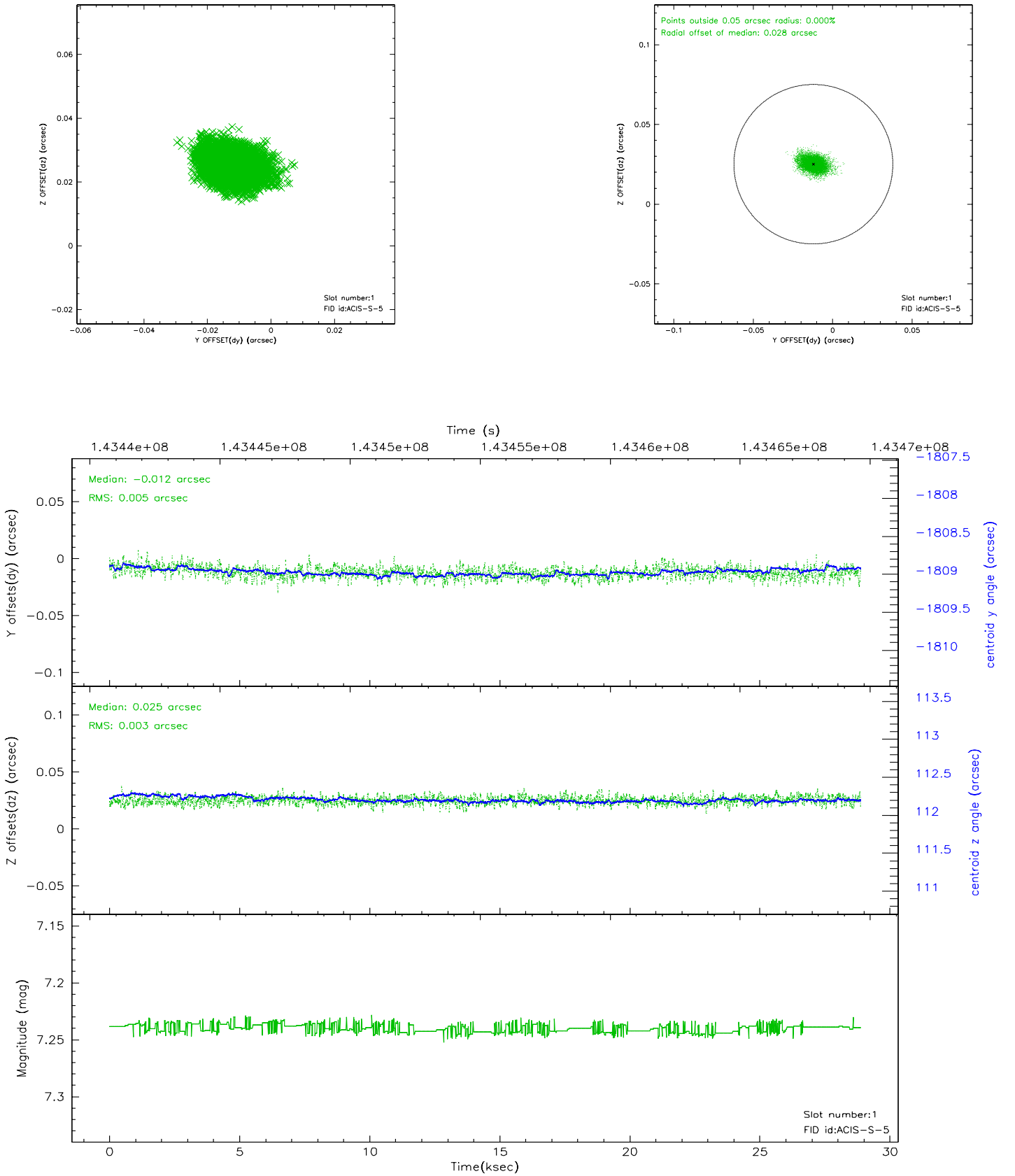


2.5 FID Slots

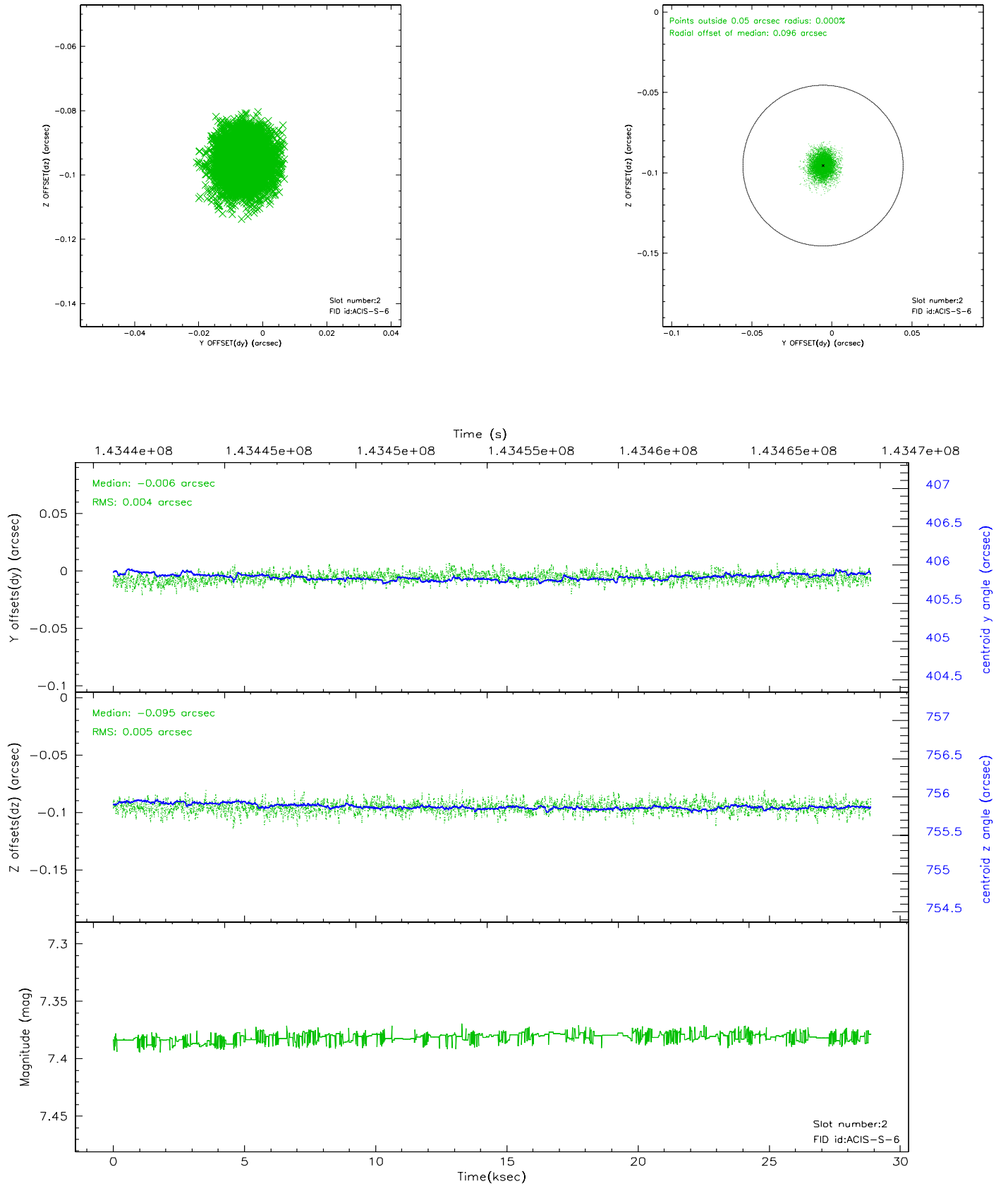
2.5.1 Slot 0



2.5.2 Slot 1

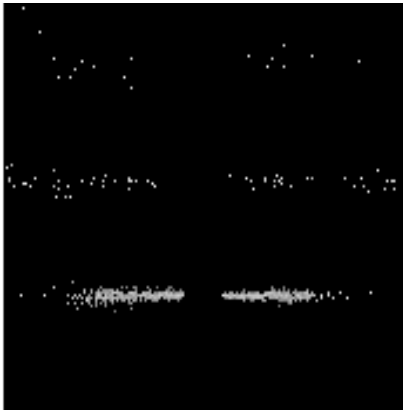


2.5.3 Slot 2

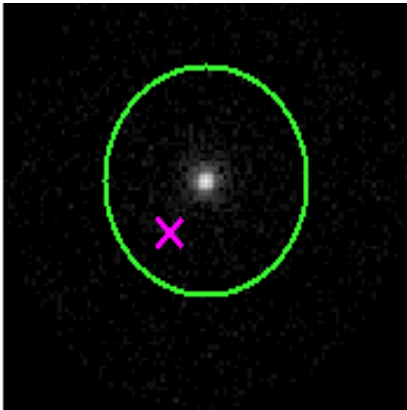


3 Gratings

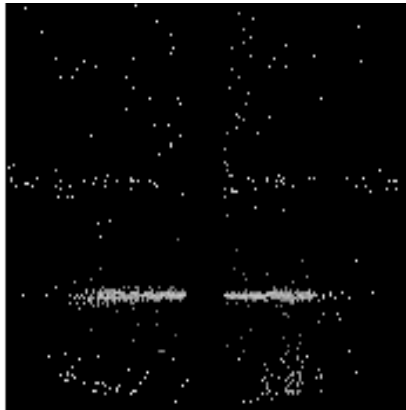
3.1 HEG Arm



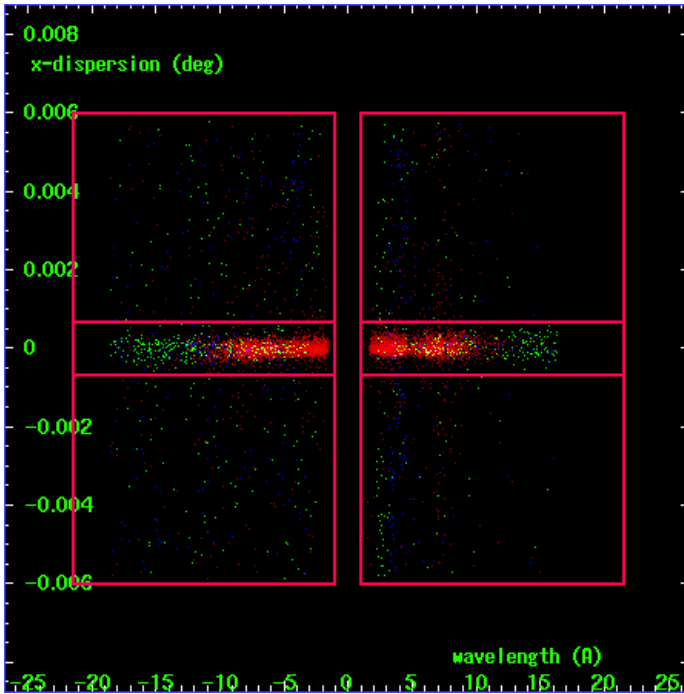
HEG Order Sort 123



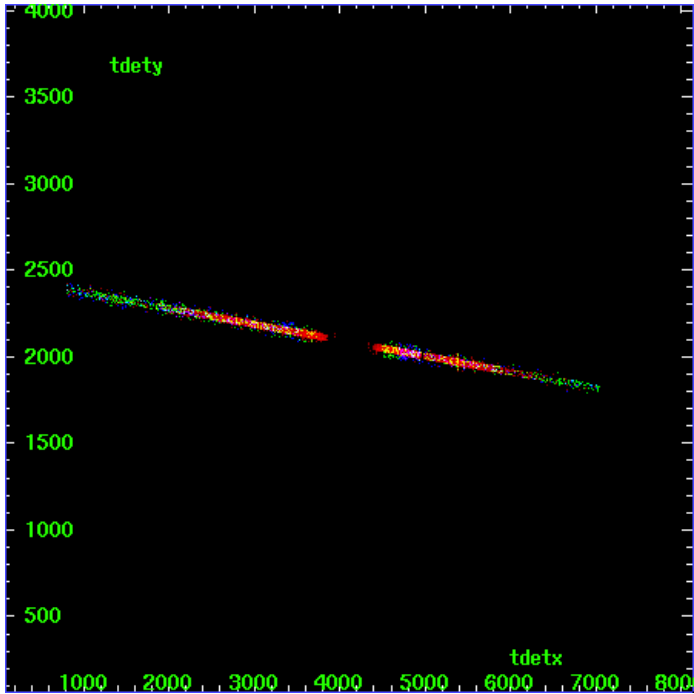
HEG Zero Order



HEG Order Sort ALL

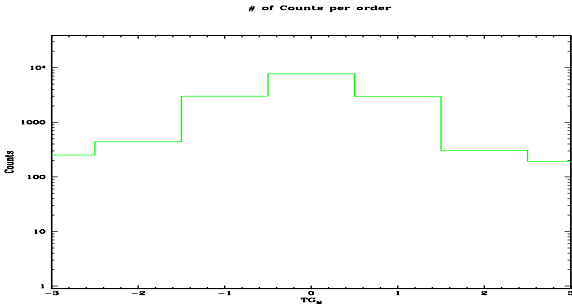


Spot Image HEG

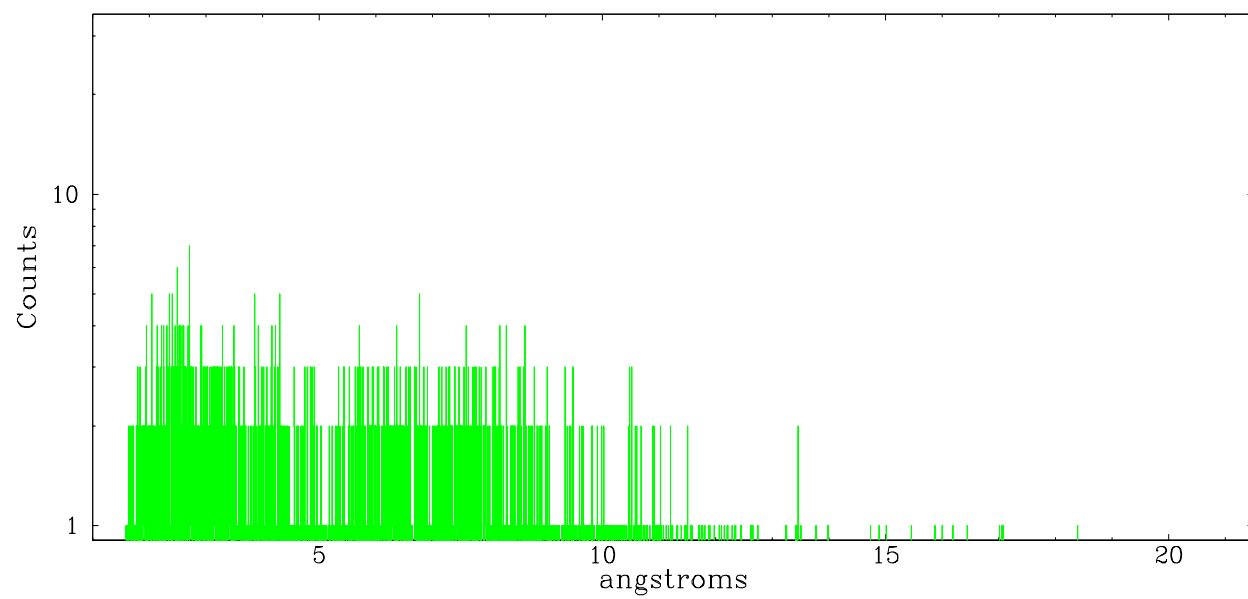


Full Detector HEG

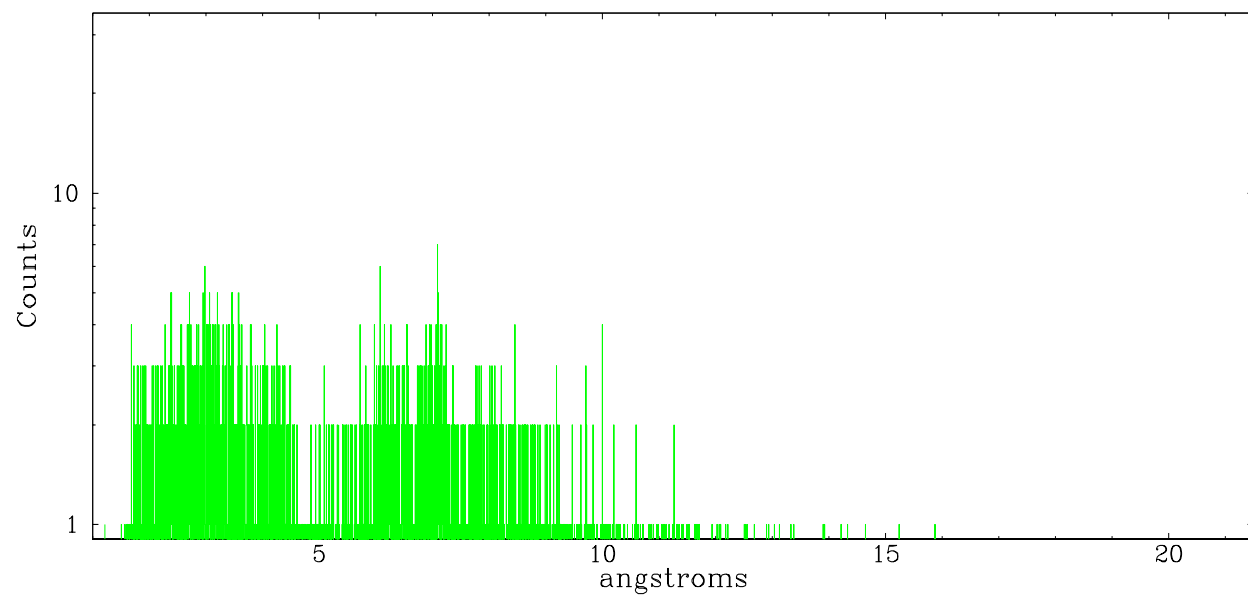
	order -3	order -2	order -1	order 0	order 1	order 2	order 3
Events	252	441	2990	7721	2988	306	191



neg order -1



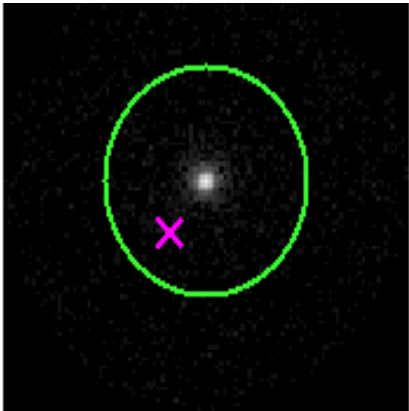
neg order +1



3.2 MEG Arm



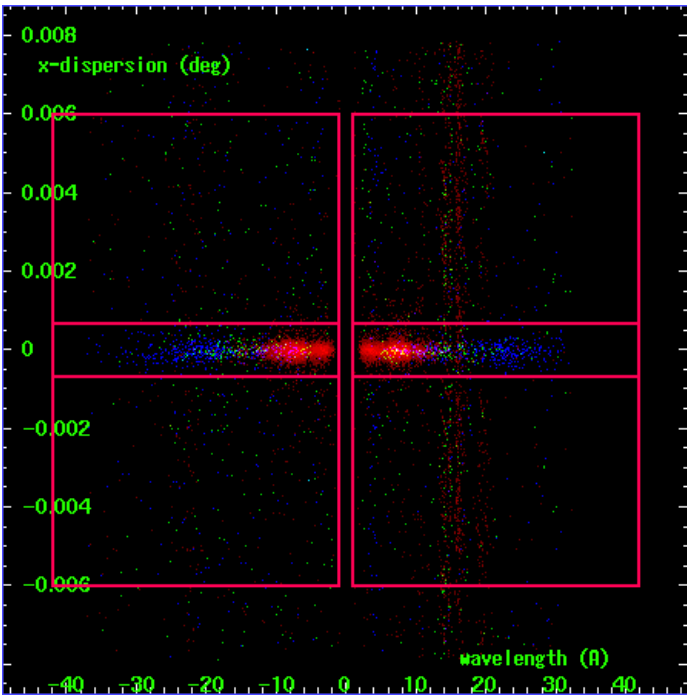
MEG Order Sort 123



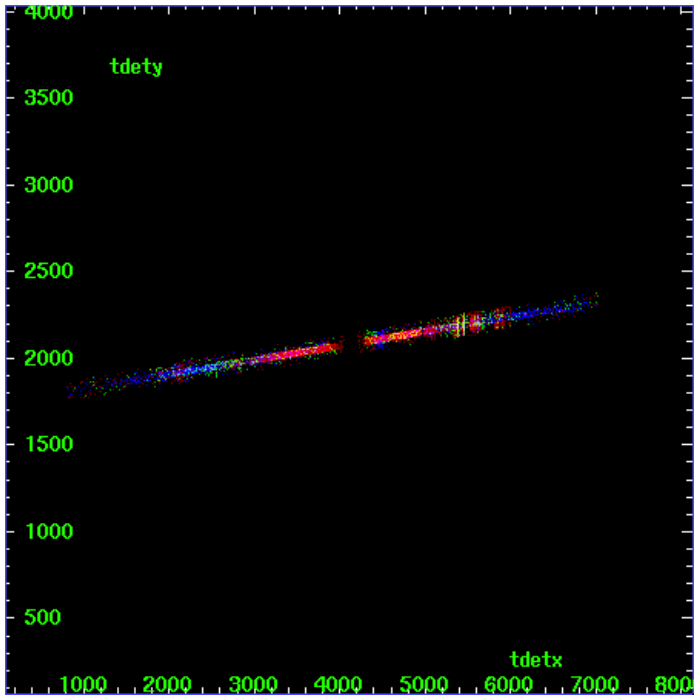
MEG Zero Order



MEG Order Sort ALL

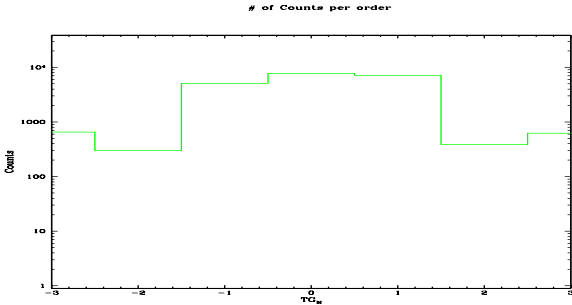


Spot Image MEG

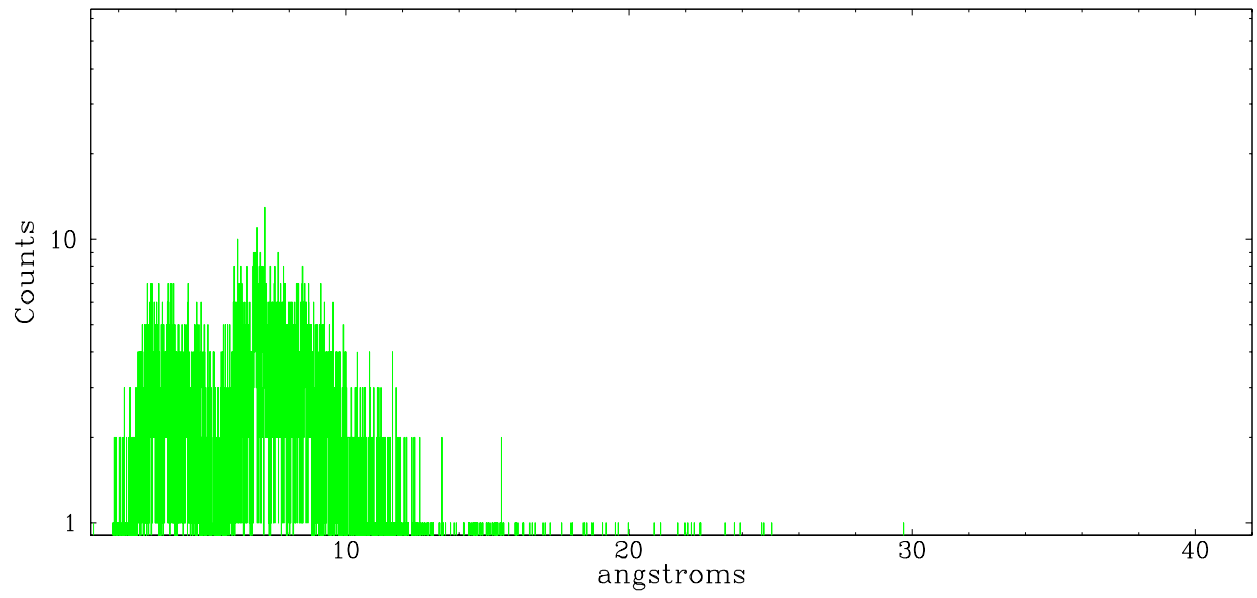


Full Detector MEG

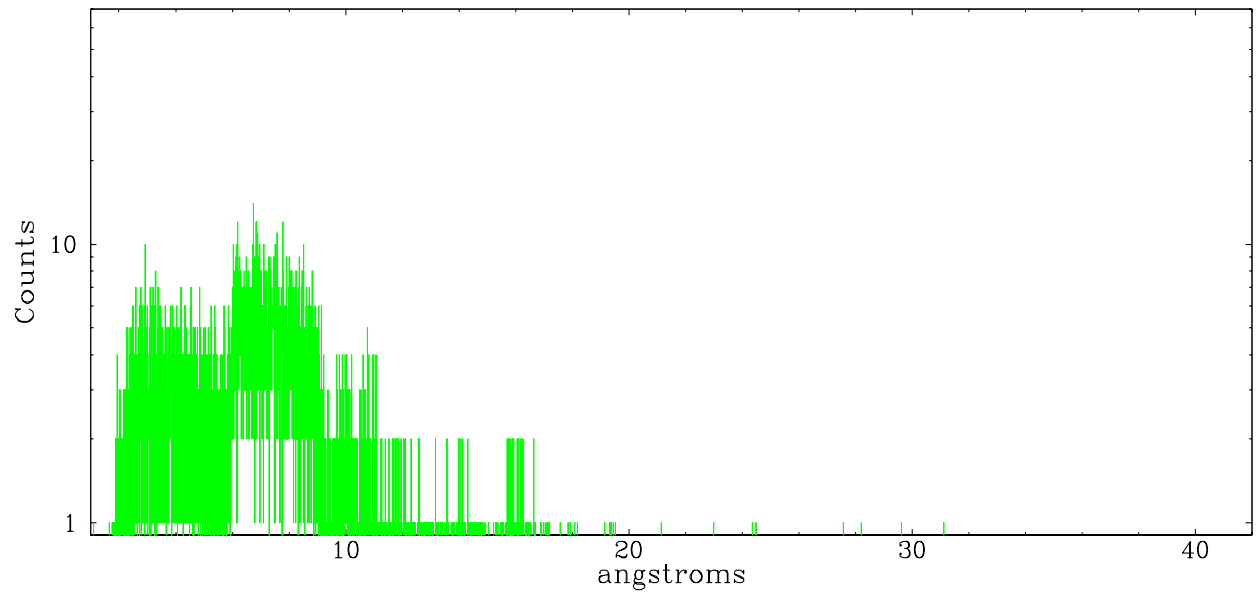
	order -3	order -2	order -1	order 0	order 1	order 2	order 3
Events	653	300	5089	7721	7128	386	621



meg order -1



meg order +1



A Summary

A.1 Status

V&V Scientist	Beth Sundheim
V&V Date (YYYY-MM-DD)	2006.09.26
V&V Edition	1
V&V Disposition and Status	OK
V&V Charge Time	28.877

A.2 Comments