

V&V Reference Report

L2 ASCDS Version : 8.4.5

Observation 3012 - L2 Version 3
Chandra X-Ray Center

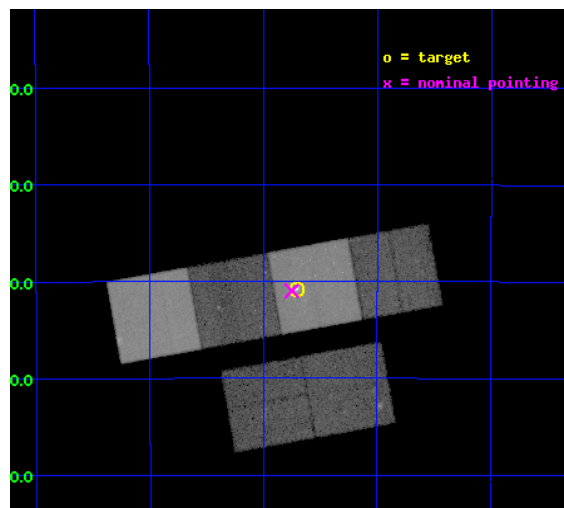
L2 Processing Date : Oct 19 2012

Contents

1	Front	2
2	OBI	3
2.1	OBI	3
2.1.1	Images	3
2.1.2	Bias	3
2.1.3	Parameters	4
2.1.4	Events	4
2.2	Compared Parameters	5
2.3	Aspect	6
2.4	Star Slots	9
2.4.1	Slot 3	9
2.4.2	Slot 4	10
2.4.3	Slot 5	11
2.4.4	Slot 6	12
2.4.5	Slot 7	13
2.5	FID Slots	14
2.5.1	Slot 0	14
2.5.2	Slot 1	15
2.5.3	Slot 2	16
A	Summary	17
A.1	Status	17
A.2	Comments	17

1 Front

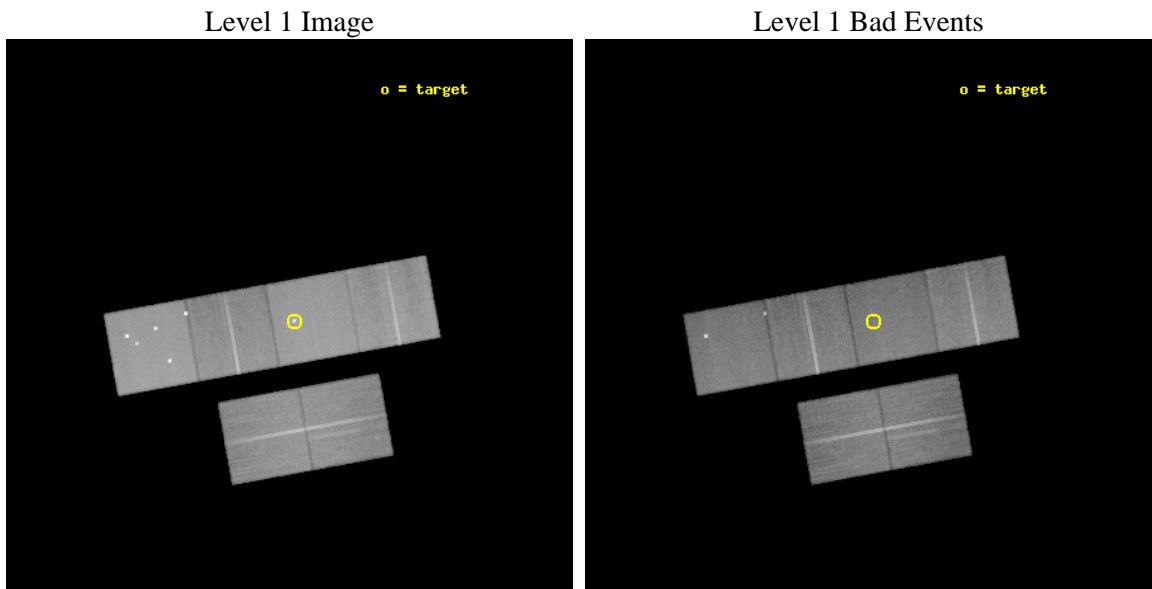
seq_num	700451	Sequence number
obs_id	3012	Observation id
title	DIFFUSE X-RAY EMISSION, SUPERWINDS, AND STELLAR X-RAY SOURCES IN THE STARBURST GALAXIES NGC 2146 AND NGC 1808	Proposal title
observer	Dr Philip Maloney	Principal investigator
object	NGC 1808	Source name
dtcycle	0	
cycle	P	events from which exps? Prim/Second/Both
ra_targ	76.92625	Observer's specified target RA [deg]
dec_targ	-37.512778	Observer's specified target Dec [deg]
ra_nom	76.937667999269	Nominal RA [deg]
dec_nom	-37.51613336069	Nominal Dec [deg]
roll_nom	349.75819345024	Nominal Roll [deg]
revision	3	Processing version of data
ontime	43427.199838221	Sum of GTIs [s]
livetime	42877.298485149	Livetime [s]
ontime2	43423.958867937	Sum of GTIs [s]
ontime3	43423.873959512	Sum of GTIs [s]
ontime5	43427.197019815	Sum of GTIs [s]
ontime6	43427.155979812	Sum of GTIs [s]
ontime7	43427.199838221	Sum of GTIs [s]
ontime8	43423.832939476	Sum of GTIs [s]
l2events	443914	Number of level 2 events



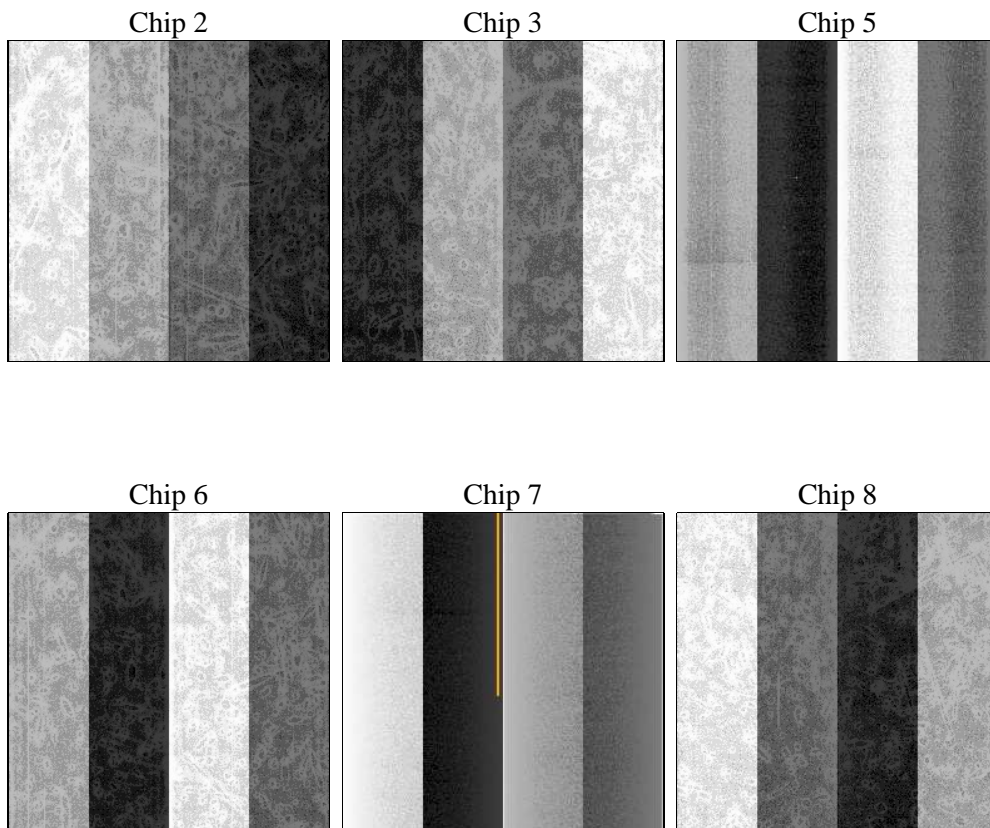
2 OBI

2.1 OBI

2.1.1 Images



2.1.2 Bias



2.1.3 Parameters

obi_num	0	Obi number	sched_exp_time	43668.080000	[s] Scheduled observation exposure time
ascdsver	8.4.5	Processing system revision	ontime	43427.199838221	Sum of GTIs [s]
caldsver	4.5.2	 	ontime2	43423.958867937	Sum of GTIs [s]
date	2012-10-19T08:46:26	Date and time of file creation	ontime3	43423.873959512	Sum of GTIs [s]
revision	3	Processing version of data	ontime5	43427.197019815	Sum of GTIs [s]
			ontime6	43427.155979812	Sum of GTIs [s]
			ontime7	43427.199838221	Sum of GTIs [s]
			ontime8	43423.832939476	Sum of GTIs [s]
			l1events	1888069	Number of level 1 events

2.1.4 Events

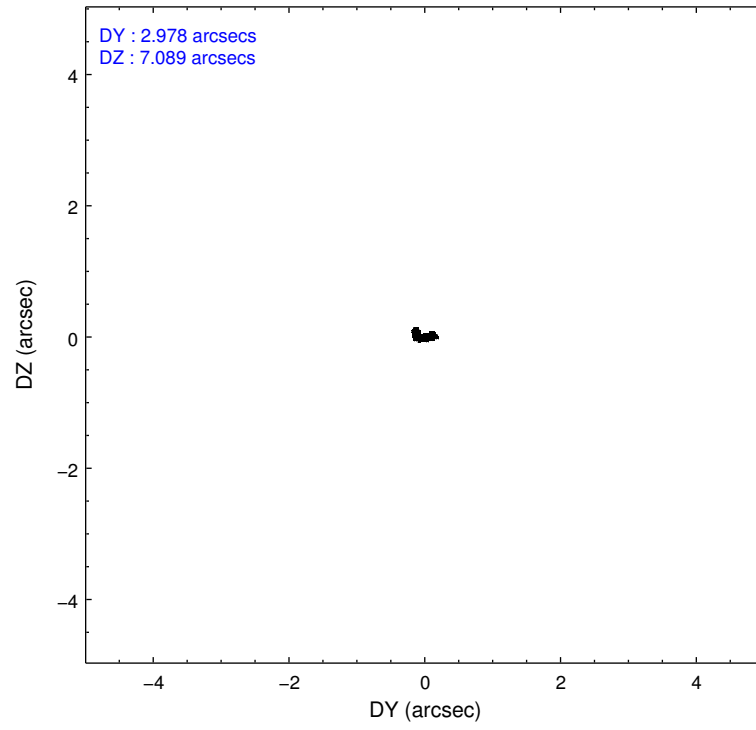
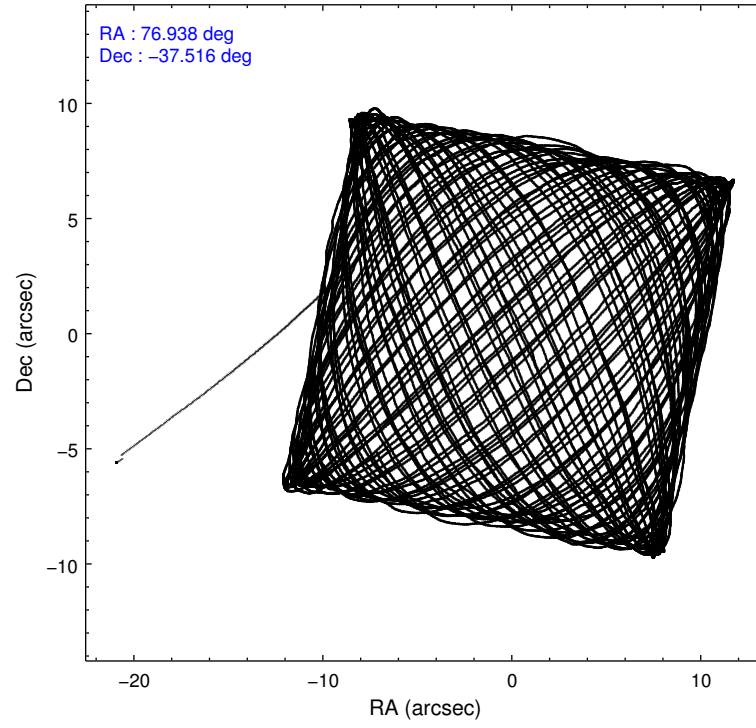
	ccd 2	ccd 3	ccd 5	ccd 6	ccd 7	ccd 8		ccd 2	ccd 3	ccd 5	ccd 6	ccd 7	ccd 8
level 1 events	263013	248139	421947	257385	363424	334161	grade 0 events	14132	14326	45266	14010	20846	22983
rejected events	231955	217117	213189	224790	200655	264534		5%	5%	10%	5%	5%	6%
rejected %	88%	87%	50%	87%	55%	79%	grade 1 events	169	150	1893	127	333	210
								0%	0%	0%	0%	0%	0%
							grade 2 events	6097	5647	56625	6374	32987	14712
								2%	2%	13%	2%	9%	4%
							grade 3 events	2909	2858	7936	3041	15021	7617
								1%	1%	1%	1%	4%	2%
							grade 4 events	2857	3031	7506	2992	14743	6955
								1%	1%	1%	1%	4%	2%
							grade 5 events	9920	10887	31733	11809	32823	15152
								3%	4%	7%	4%	9%	4%
							grade 6 events	5068	5162	91467	6180	79194	17366
								1%	2%	21%	2%	21%	5%
							grade 7 events	221861	206078	179521	212852	167477	249166
								84%	83%	42%	82%	46%	74%

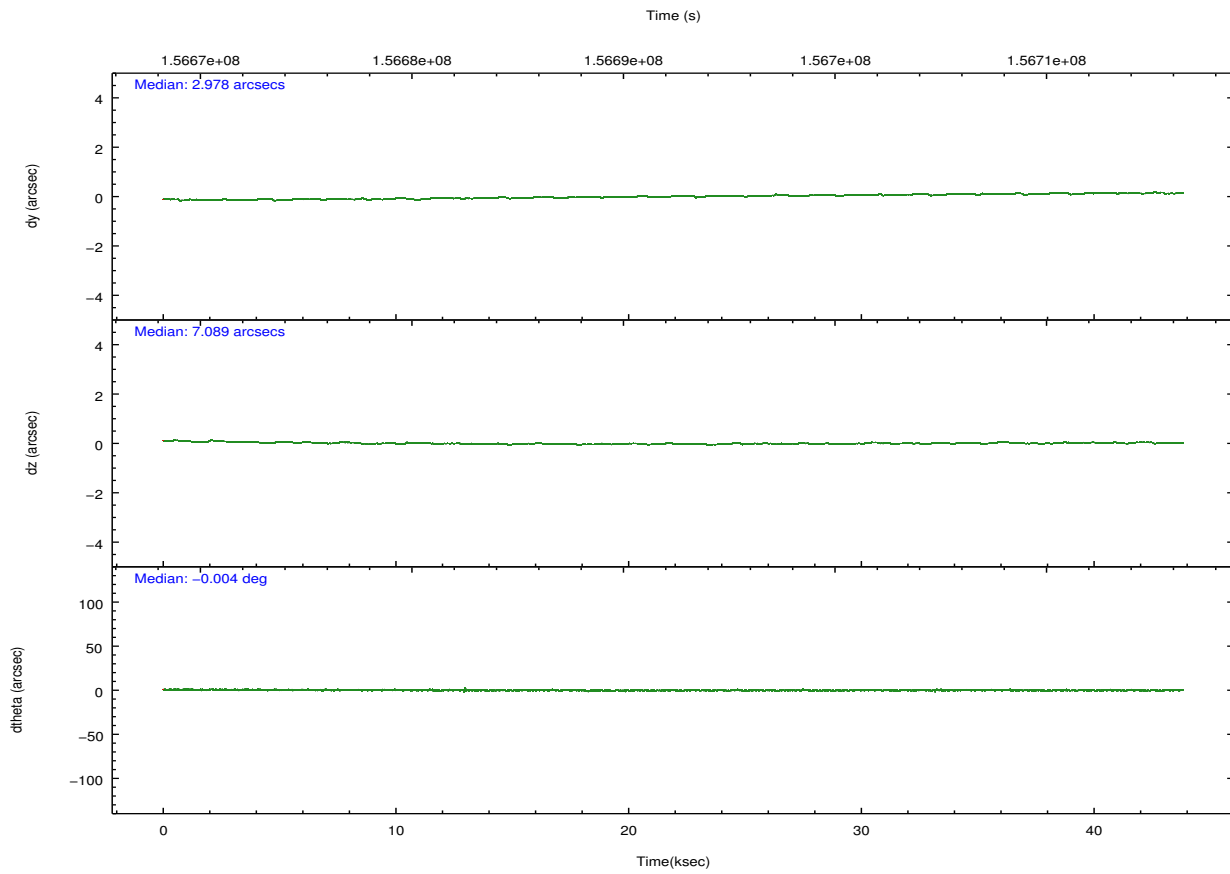
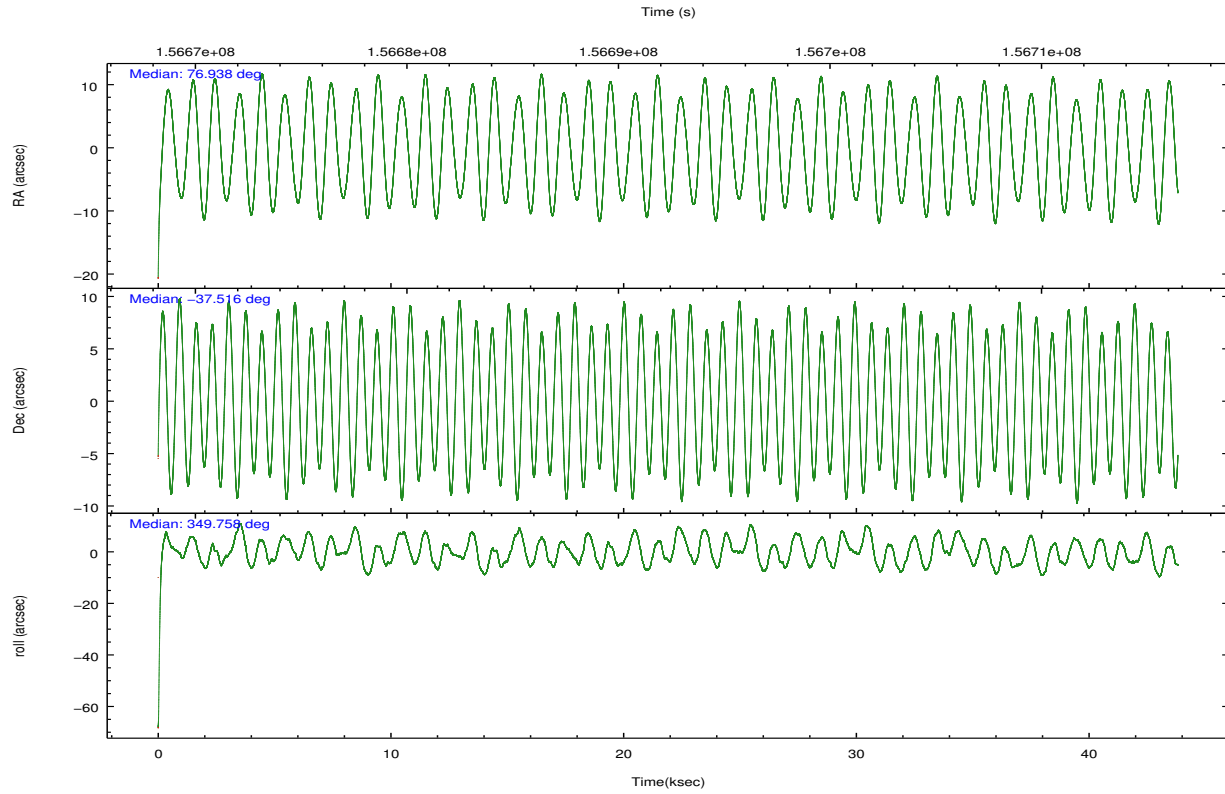
2.2 Compared Parameters

Parameter	Planned	Actual
Instrument	ACIS	ACIS
Detector	ACIS-235678	ACIS-235678
Grating	NONE	NONE
Data mode	FAINT	FAINT
Observation mode	POINTING	POINTING
[deg] Pointing RA	76.905533	76.93766799926904
[deg] Pointing Dec	-37.525696	-37.51613336069012
[deg] Pointing Roll	349.582007	349.7581934502387
[mm] SIM focus pos	-0.684267	-0.6828225247311905
[mm] SIM defocus	0	0.001444936568705701
[mm] SIM translation stage pos	-190.132523	-190.1400660498719
[mm] SIM translation stage offset	0	0.00754346686406393
[s] Observation start time (MET)	156670581.184000	156669596.79646
Observation start date	2002-12-19T07:35:17	2002-12-19T07:19:56
[s] Observation end time (MET)	156714249.184000	156714564.06084
Observation end date	2002-12-19T19:43:05	2002-12-19T19:49:24
Read mode	TIMED	TIMED

Parameter	Planned	Actual
Obspar format version number	7	7
Obspar file type	PREDICTED	ACTUAL
Obspar update status	NONE	UPDATED
Number of optional ACIS chips dropped	0	0
On-chip summing requested	N	N
Subarray requested	NONE	NONE
Alternating exposures requested	N	N
[s] Primary exposure time	0.000000	3.2

2.3 Aspect



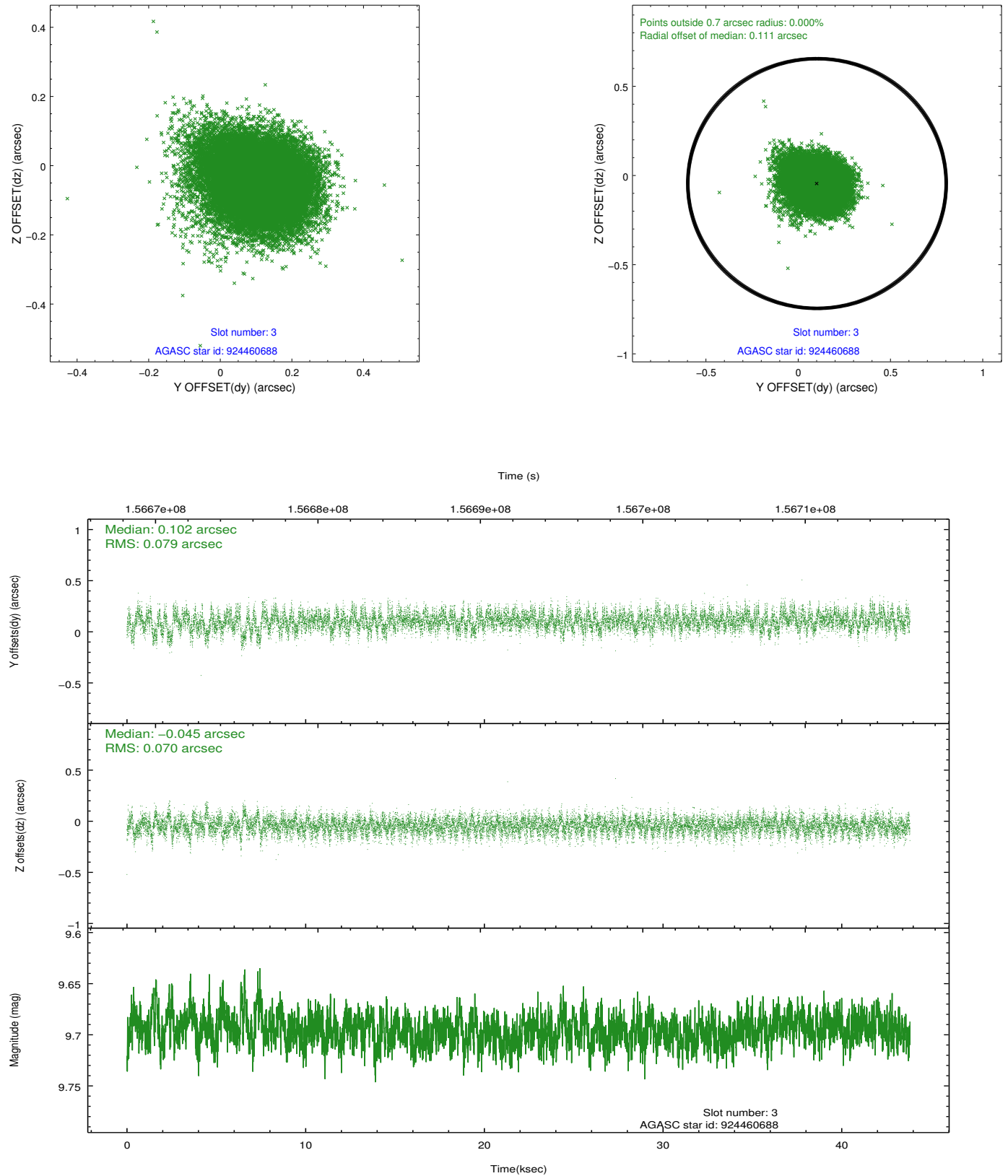


Slot Statistics

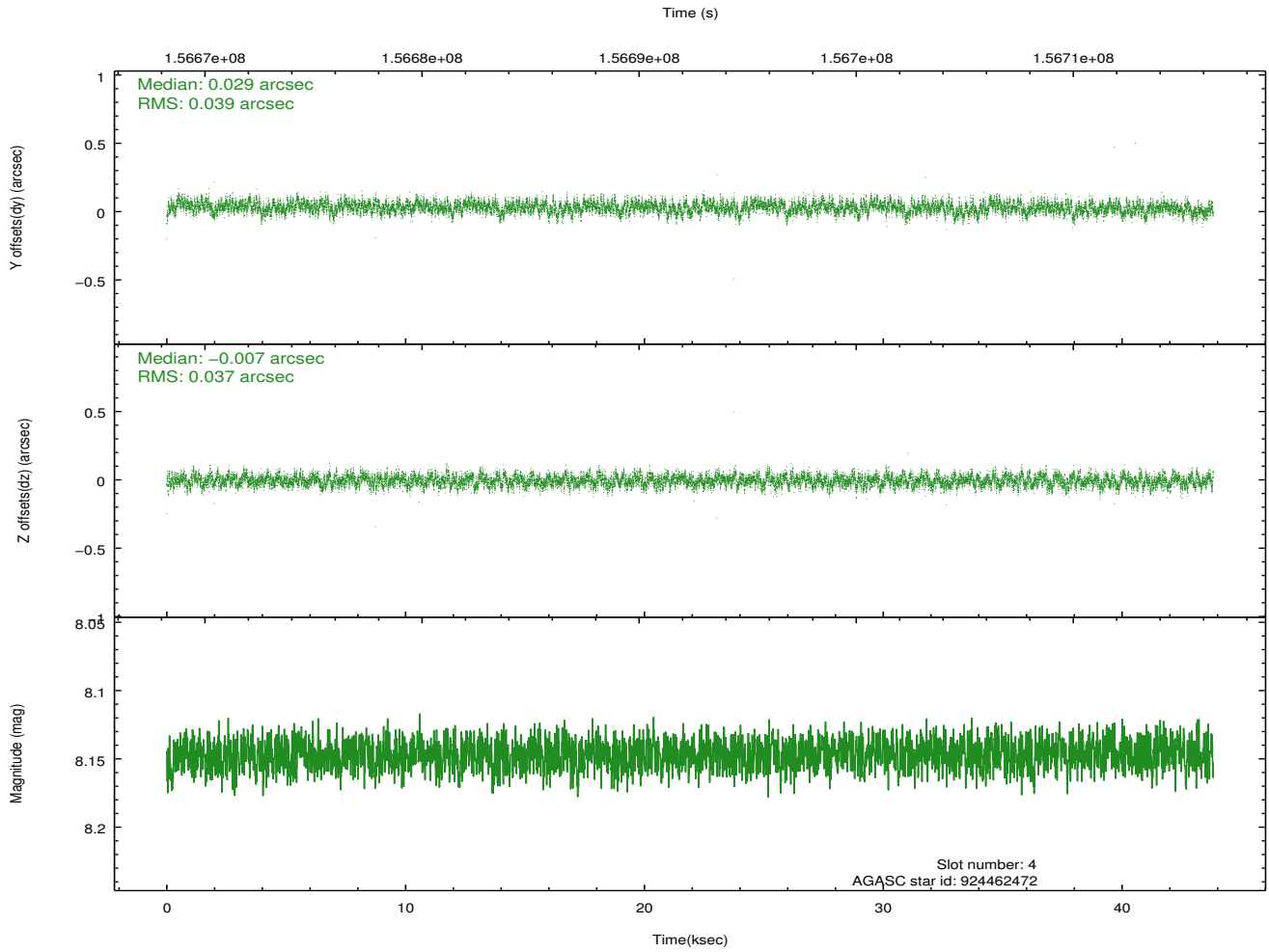
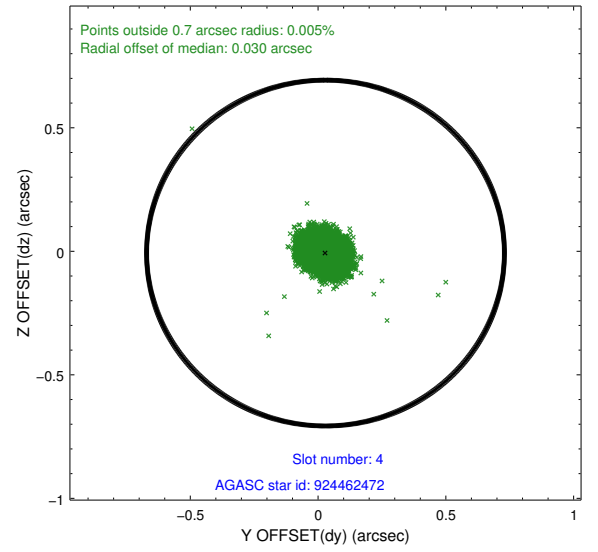
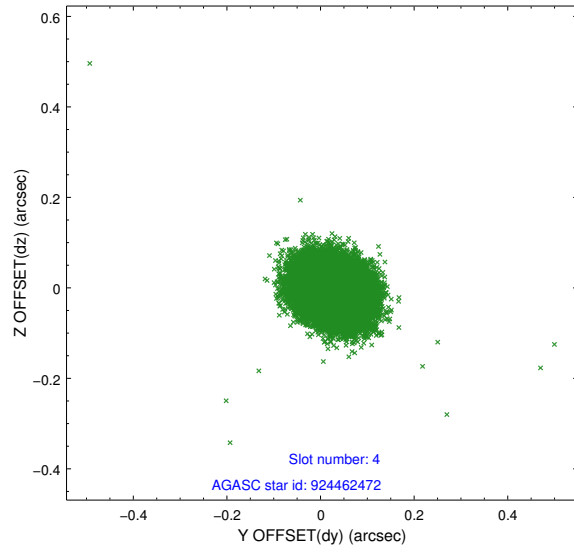
slot	status	id	mag	n_pts	med_dy	med_dz	dr1	dr2	ra	dec	mean_y	mean_z
0	FID	ACIS-S-2	7.12	10686	-0.024	-0.007	0.007	0.012	0.000000	0.000000	-755.64	-1728.27
1	FID	ACIS-S-4	7.20	10686	0.007	0.013	0.007	0.013	0.000000	0.000000	2157.66	180.24
2	FID	ACIS-S-5	7.24	10686	-0.014	0.002	0.008	0.013	0.000000	0.000000	-1808.47	173.89
3	GUIDE	924460688	9.70	21162	0.102	-0.045	0.112	0.185	76.282167	-37.143685	-2006.68	1023.13
4	GUIDE	924462472	8.15	21373	0.029	-0.007	0.057	0.091	76.716656	-37.187120	-752.91	1100.15
5	GUIDE	994457640	9.34	21367	-0.079	-0.052	0.124	0.202	76.557826	-38.140083	-567.87	-2355.51
6	GUIDE	994576336	9.54	21354	0.029	0.033	0.105	0.166	77.636285	-37.790332	2218.69	-569.30
7	GUIDE	994576496	9.94	21285	-0.078	0.067	0.121	0.198	77.642425	-37.775924	2226.89	-515.07

2.4 Star Slots

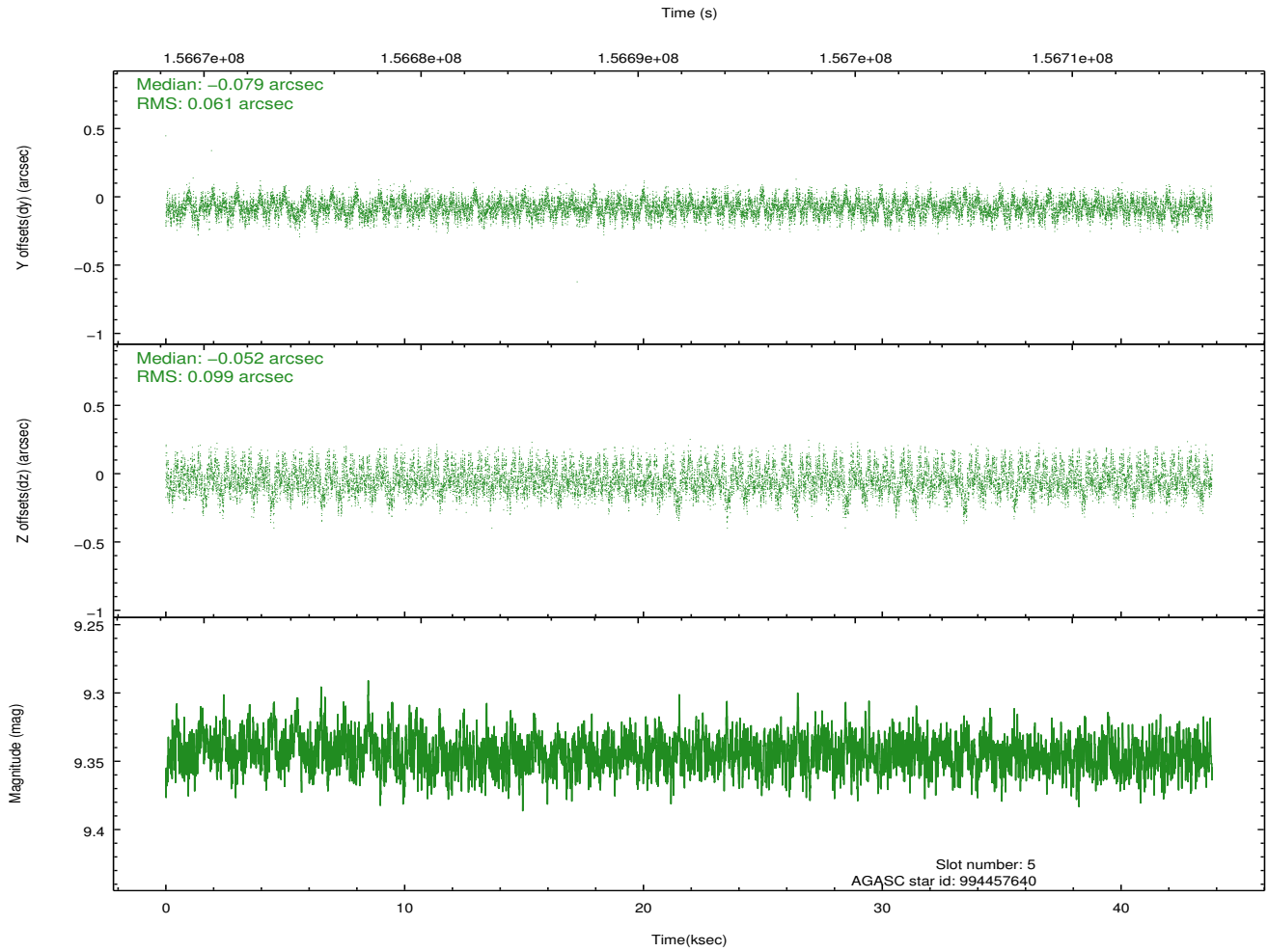
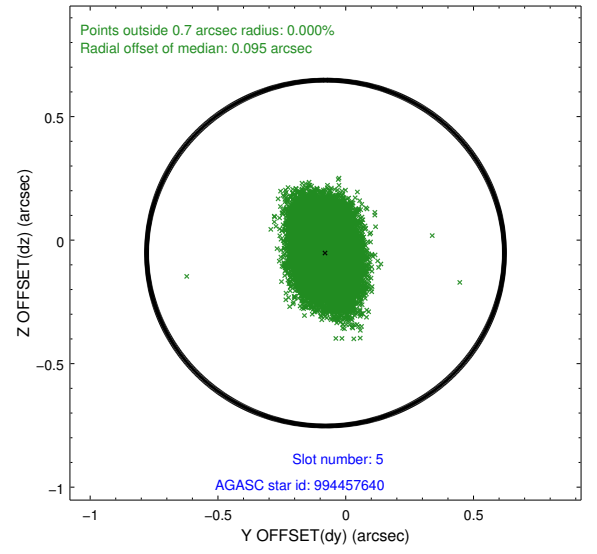
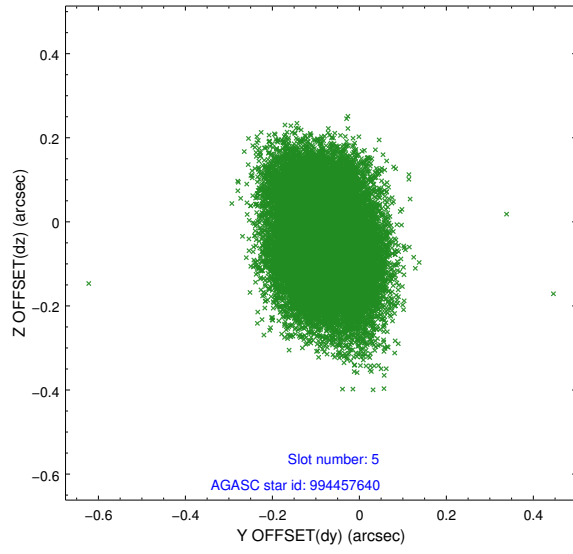
2.4.1 Slot 3



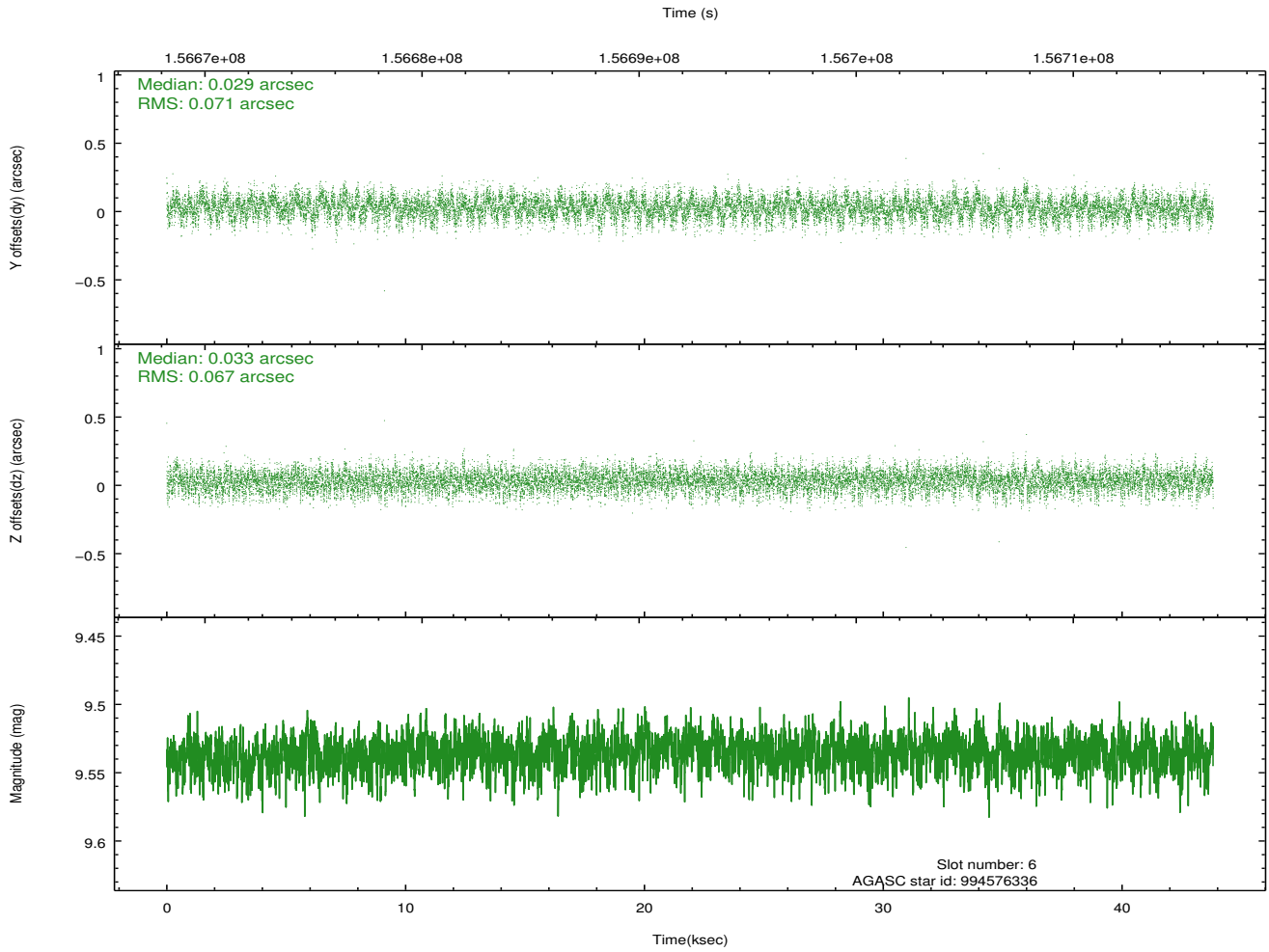
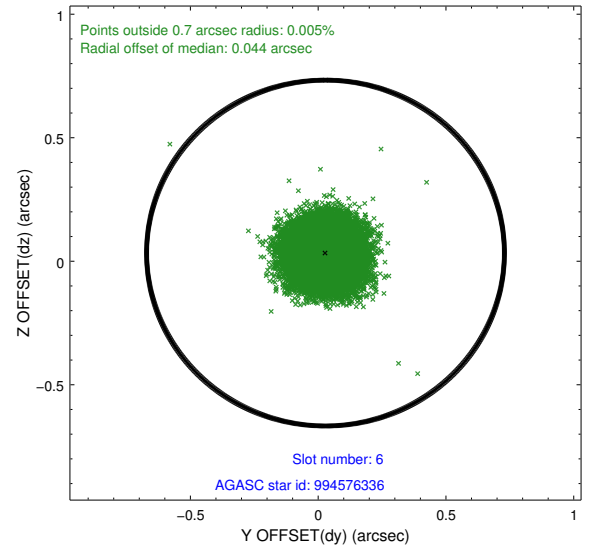
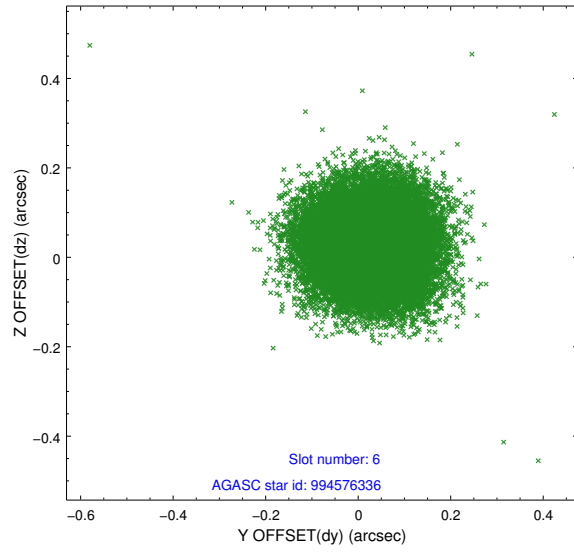
2.4.2 Slot 4



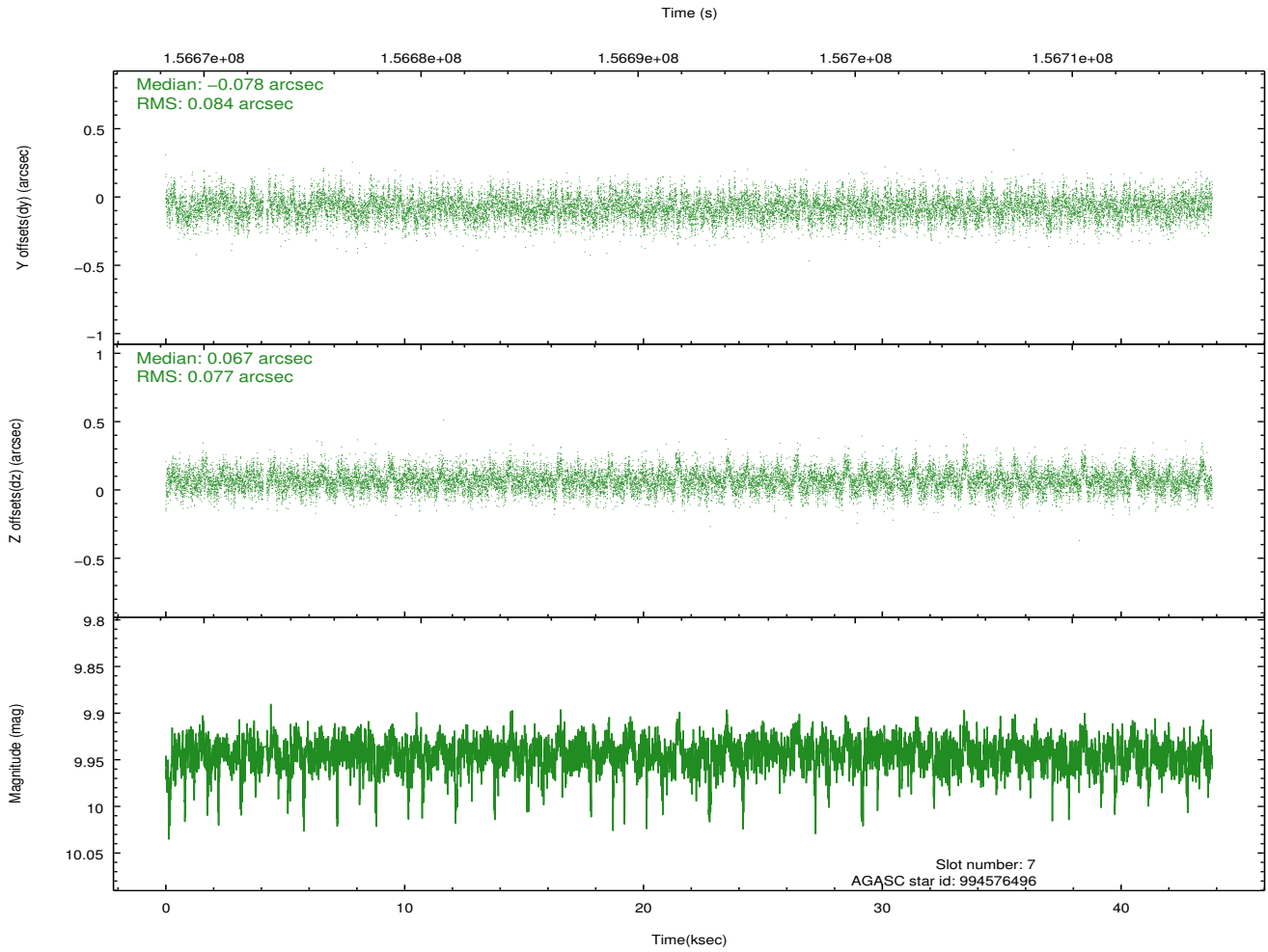
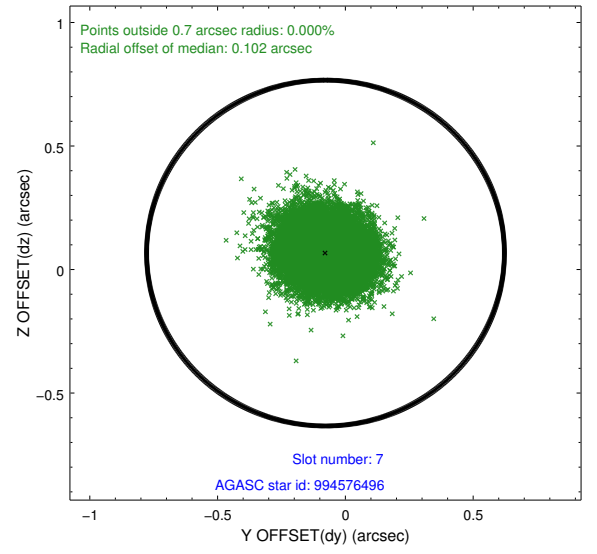
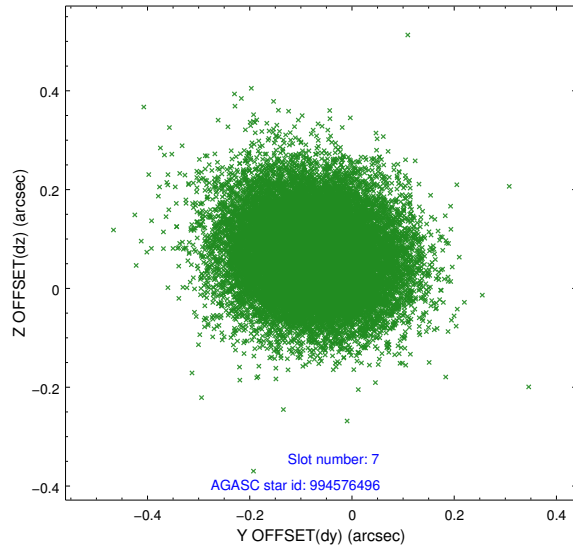
2.4.3 Slot 5



2.4.4 Slot 6

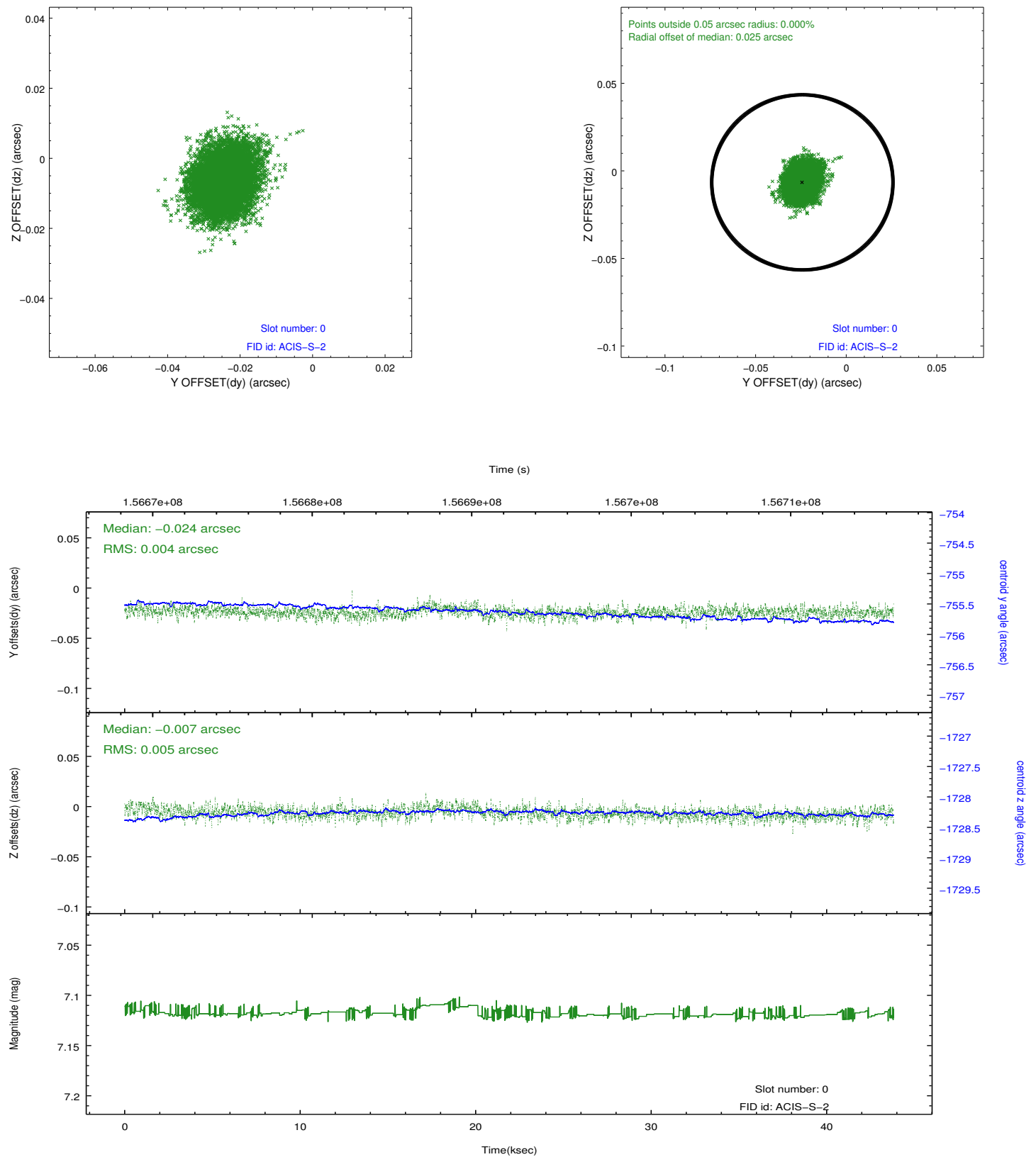


2.4.5 Slot 7

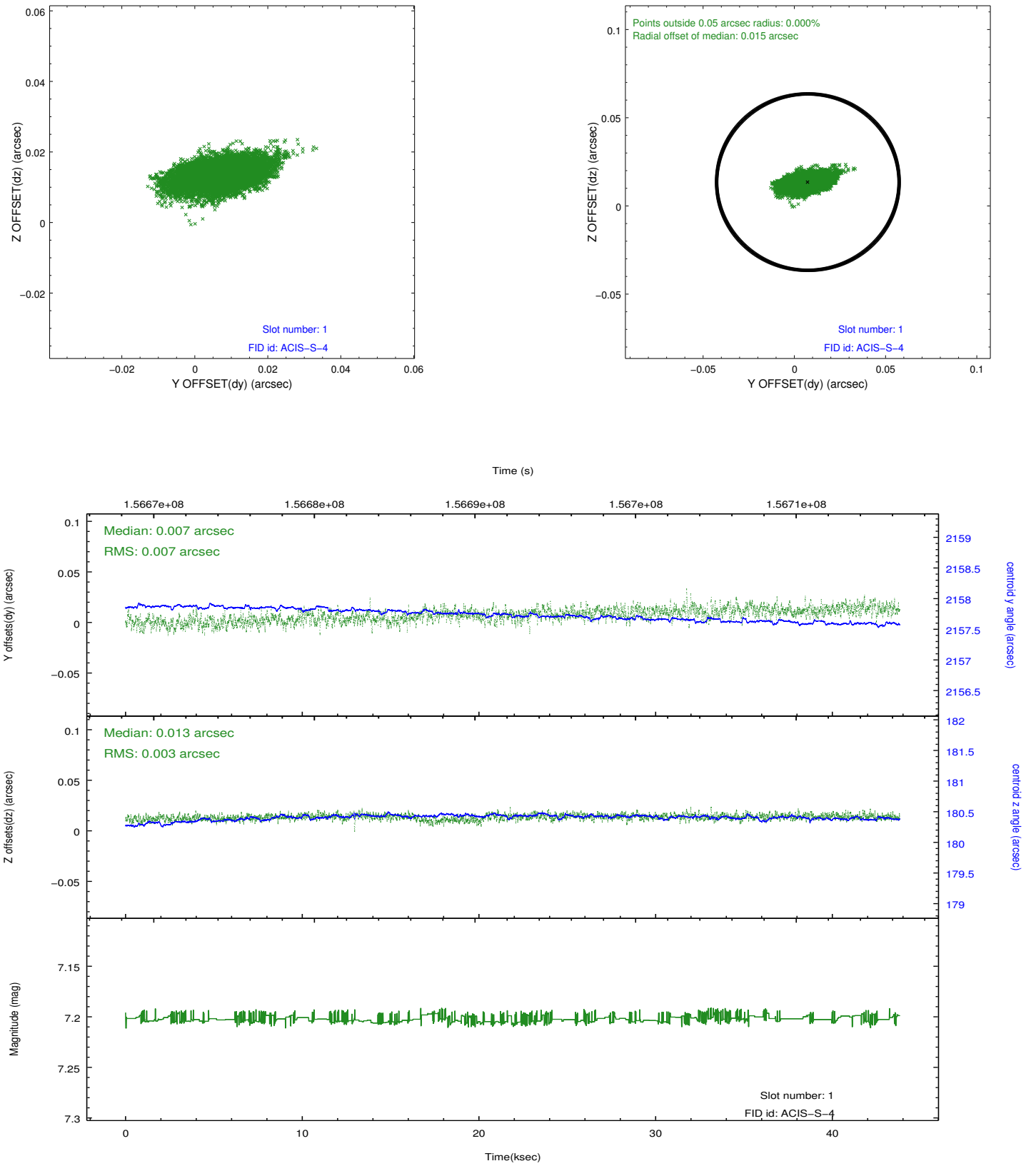


2.5 FID Slots

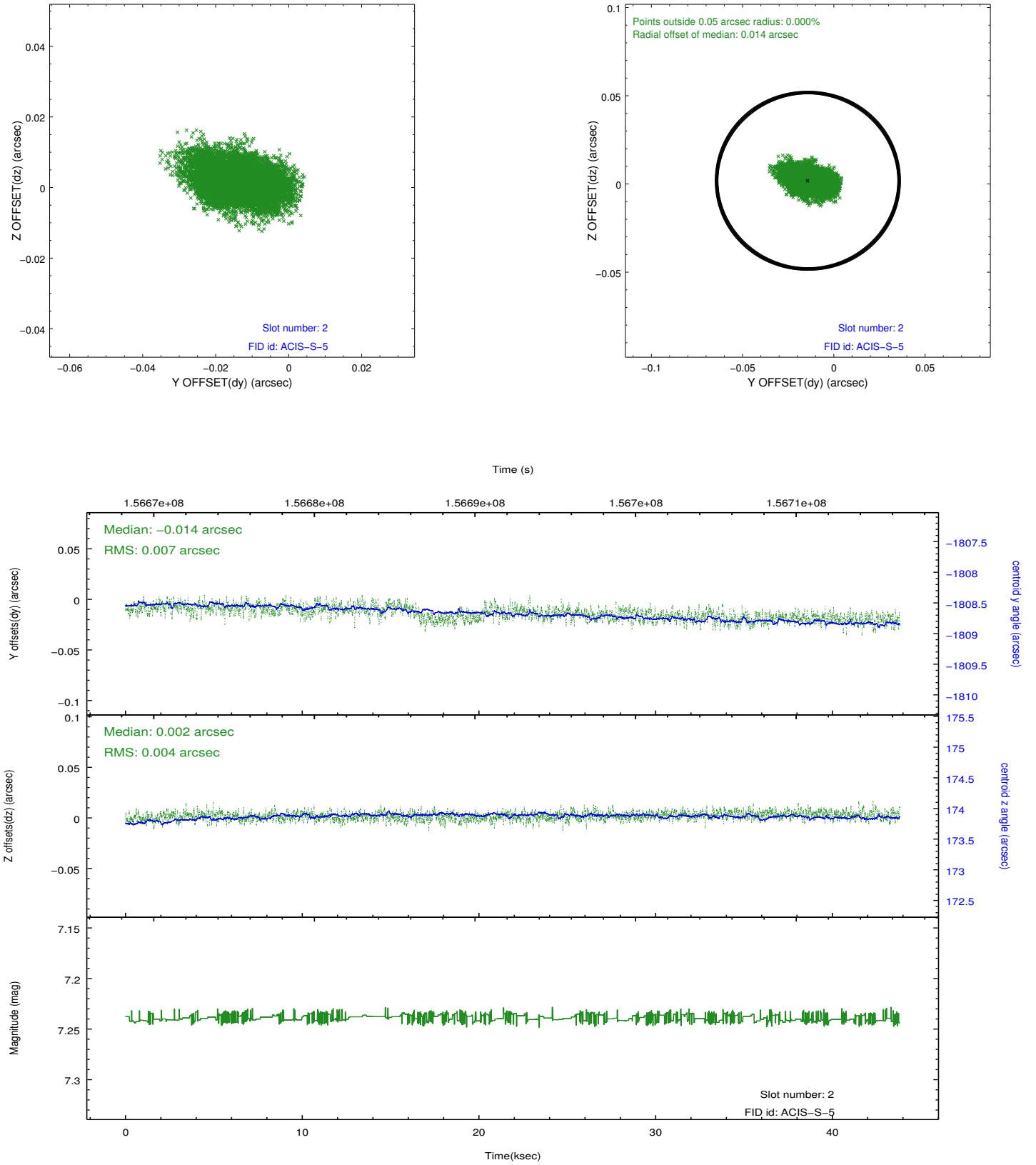
2.5.1 Slot 0



2.5.2 Slot 1



2.5.3 Slot 2



A Summary

A.1 Status

V&V Scientist	Jen Lauer
V&V Date (YYYY-MM-DD)	2012.10.31
V&V Edition	1
V&V Disposition and Status	OK
V&V Charge Time	43.43

A.2 Comments