

# V&V Reference Report

## L2 ASCDS Version : 7.6.8.1

Observation 2999 - L2 Version 001  
Chandra X-Ray Center

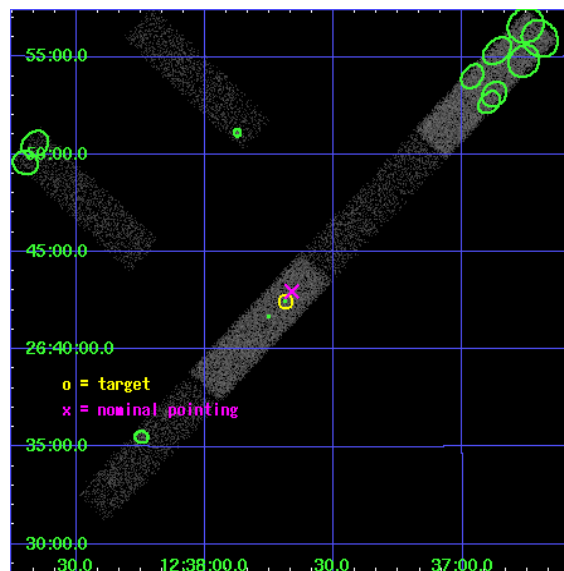
L2 Processing Date : Sep 6 2006

## Contents

<b>1</b>	<b>Front</b>	<b>2</b>
<b>2</b>	<b>OBI</b>	<b>3</b>
2.1	OBI . . . . .	3
2.1.1	Images . . . . .	3
2.1.2	Bias . . . . .	3
2.1.3	Parameters . . . . .	4
2.1.4	Events . . . . .	4
2.2	Compared Parameters . . . . .	5
2.3	Aspect . . . . .	6
2.4	Star Slots . . . . .	9
2.4.1	Slot 3 . . . . .	9
2.4.2	Slot 4 . . . . .	10
2.4.3	Slot 5 . . . . .	11
2.4.4	Slot 6 . . . . .	12
2.4.5	Slot 7 . . . . .	13
2.5	FID Slots . . . . .	14
2.5.1	Slot 0 . . . . .	14
2.5.2	Slot 1 . . . . .	15
2.5.3	Slot 2 . . . . .	16
<b>3</b>	<b>Point Sources</b>	<b>17</b>
<b>A</b>	<b>Summary</b>	<b>18</b>
A.1	Status . . . . .	18
A.2	Comments . . . . .	18

# 1 Front

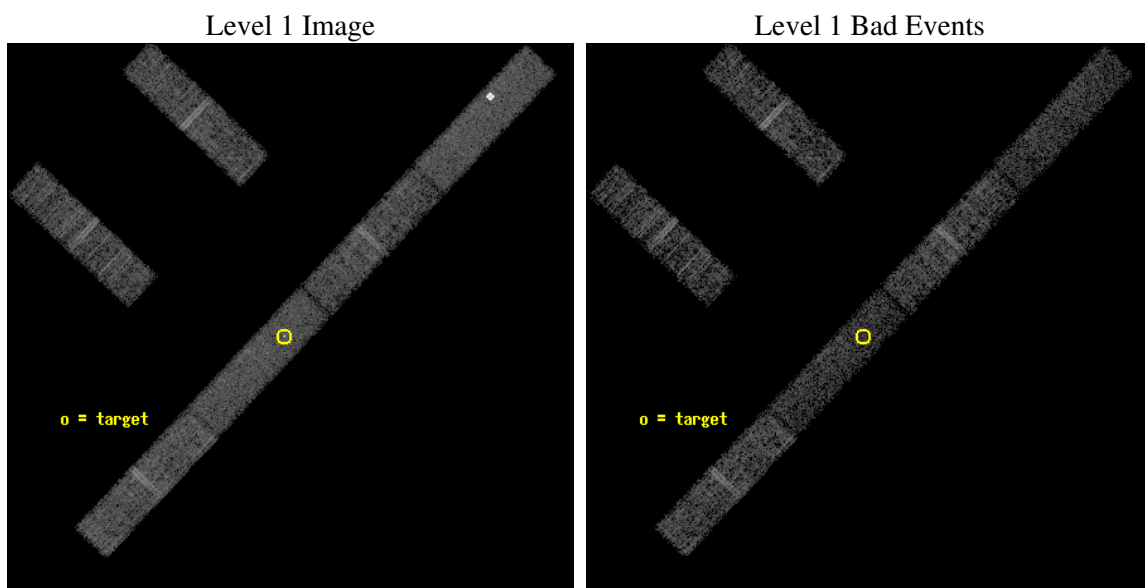
seq_num	700438
obs_id	2999
title	CHANDRA SNAPSHOT OBSERVATIONS OF SOFT X-RAY TRANSIENT AGN
observer	Dr Rick Edelson
object	IC 3599
dtcycle	0
cycle	P
ra_targ	189.421667
dec_targ	26.708056
ra_nom	189.41574976608
dec_nom	26.716205751381
roll_nom	133.29224861567
revision	2
ontime	10553.399942815
livetime	10173.823824841
ontime2	10553.399942815
ontime3	10553.365091681
ontime5	10553.399942815
ontime6	10553.399942815
ontime7	10553.399942815
ontime8	10553.324051678
l2events	29214



## 2 OBI

### 2.1 OBI

#### 2.1.1 Images

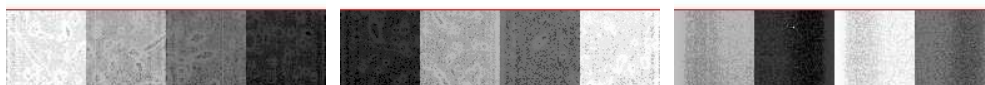


#### 2.1.2 Bias

Chip 2

Chip 3

Chip 5



Chip 6

Chip 7

Chip 8



### 2.1.3 Parameters

obi_num	1
ascdsver	7.6.8.1
caldbver	3.2.3
date	2006-09-06T13:38:31
revision	2

sched_exp_time	10000.000000
ontime	10554.512477115
ontime2	10554.512477115
ontime3	10554.512477115
ontime5	10554.512477115
ontime6	10554.512477115
ontime7	10554.512477115
ontime8	10554.512477115
l1events	157748

### 2.1.4 Events

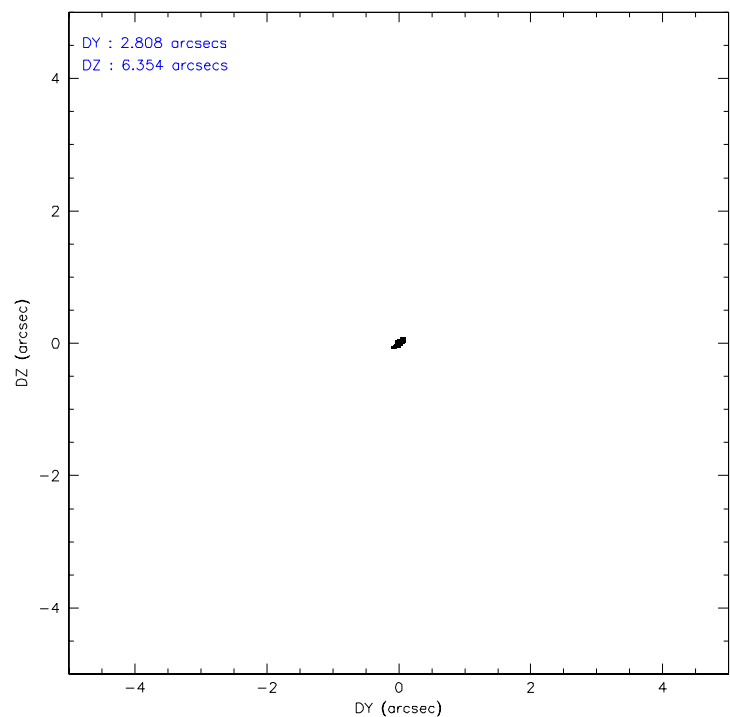
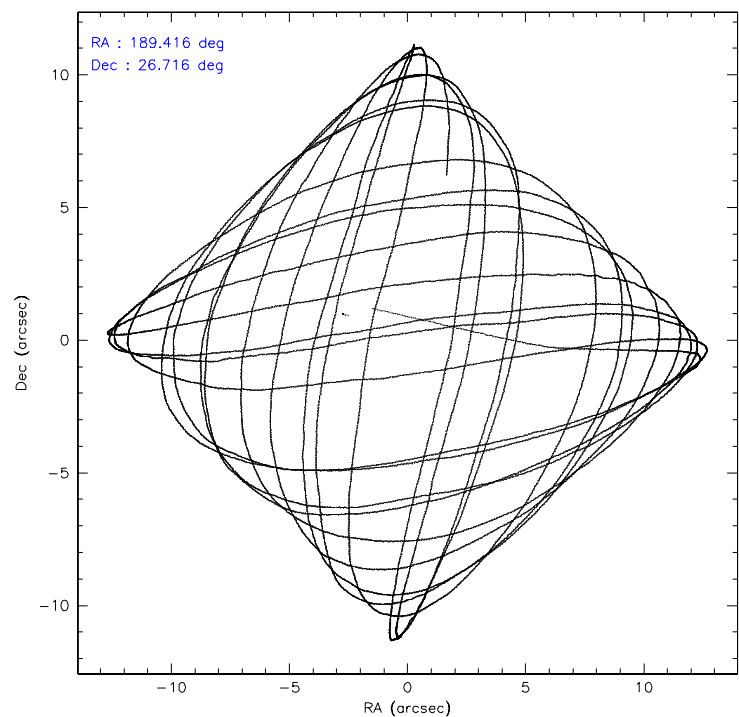
	ccd 2	ccd 3	ccd 5	ccd 6	ccd 7	ccd 8
level 1 events	23440	22153	35097	23170	25190	28698
rejected events	20997	19853	14929	20756	14860	23343
rejected %	89%	89%	42%	89%	58%	81%

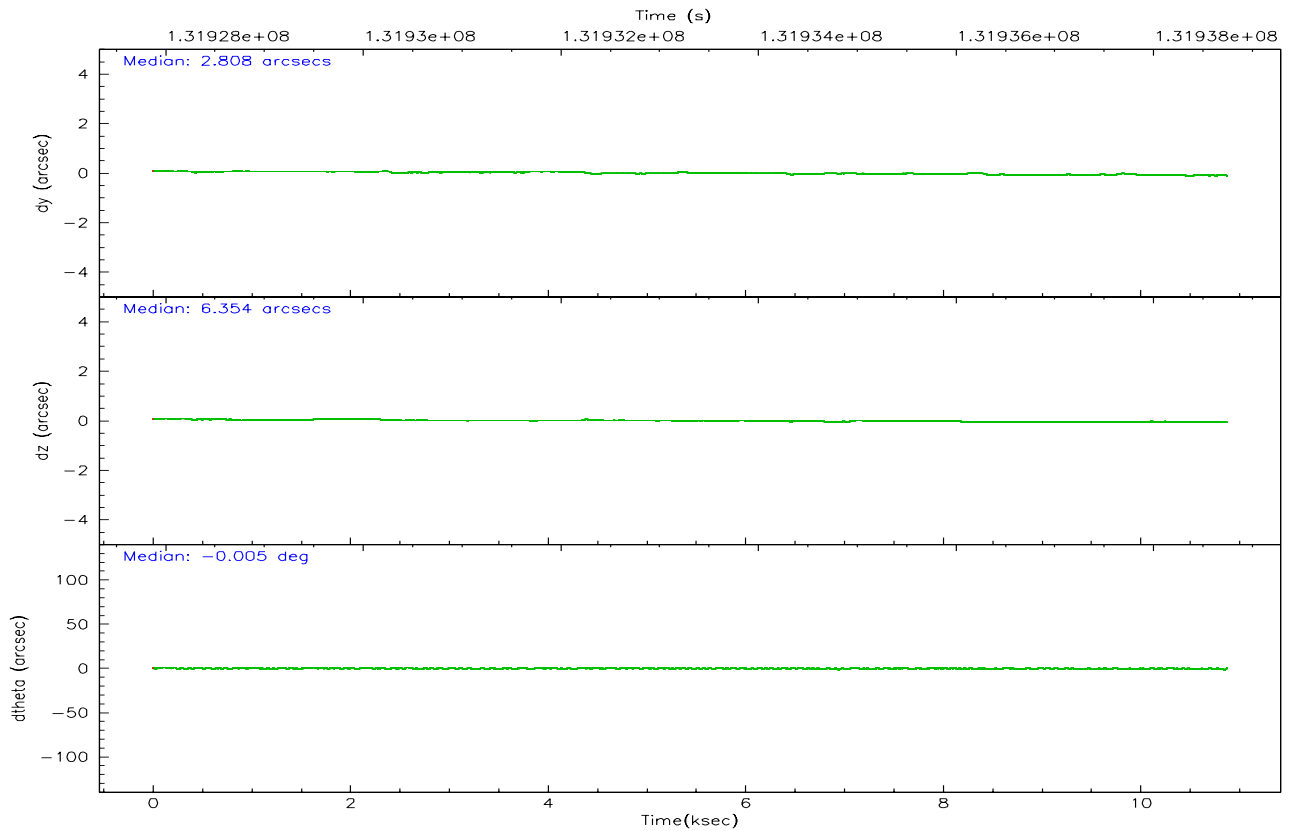
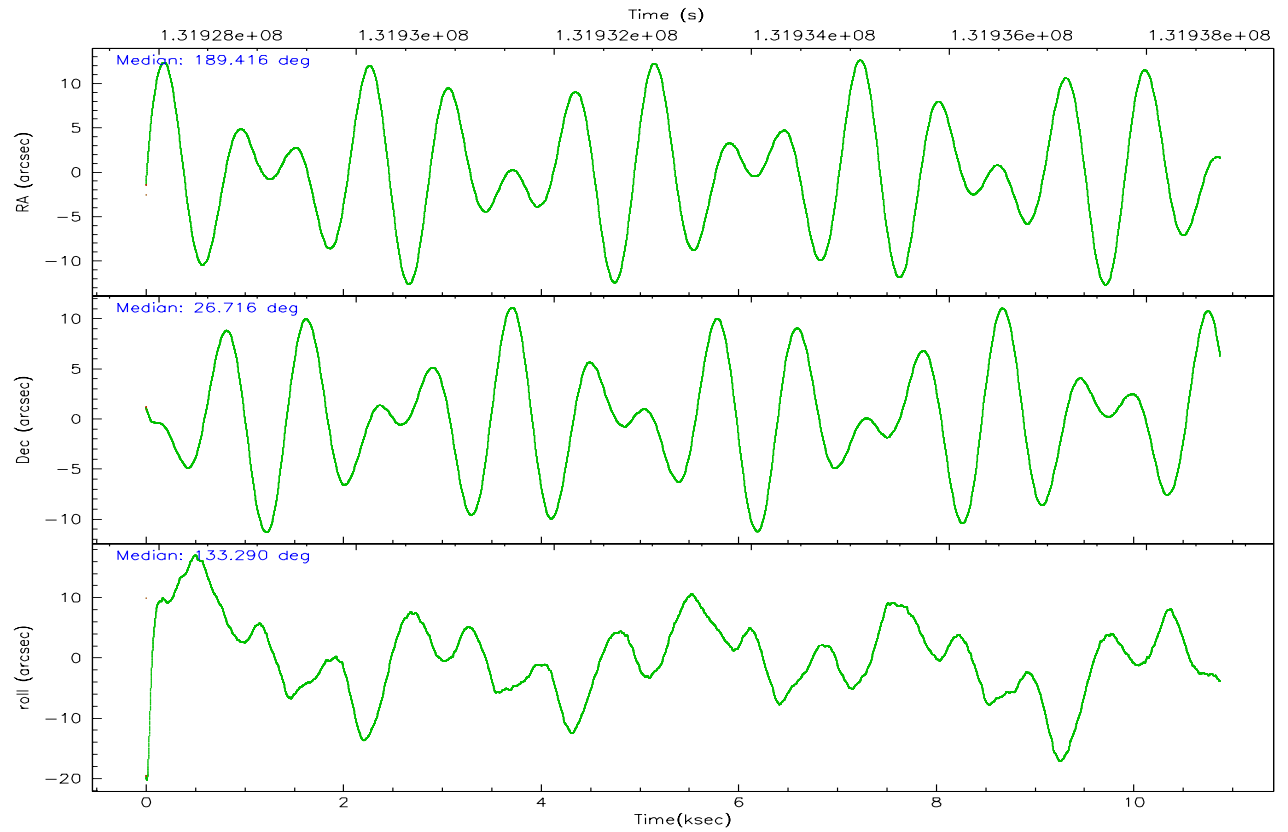
	ccd 2	ccd 3	ccd 5	ccd 6	ccd 7	ccd 8
grade 0 events	883	865	9024	815	940	1683
	3%	3%	25%	3%	3%	5%
grade 1 events	5	5	28	9	19	6
	0%	0%	0%	0%	0%	0%
grade 2 events	466	430	3717	445	2492	989
	1%	1%	10%	1%	9%	3%
grade 3 events	340	336	405	327	762	634
	1%	1%	1%	1%	3%	2%
grade 4 events	314	292	354	357	689	569
	1%	1%	1%	1%	2%	1%
grade 5 events	664	729	1356	798	1762	998
	2%	3%	3%	3%	6%	3%
grade 6 events	440	377	6669	470	5447	1480
	1%	1%	19%	2%	21%	5%
grade 7 events	20328	19119	13544	19949	13079	22339
	86%	86%	38%	86%	51%	77%

## 2.2 Compared Parameters

Parameter	Planned	Actual	Parameter	Planned	Actual
Instrument	ACIS	ACIS	Obspar format version number	6	6
Detector	ACIS-235678	ACIS-235678	Obspar file type	PREDICTED	ACTUAL
Grating	NONE	NONE	Obspar update status	NONE	UPDATED
Data mode	FAINT	FAINT	On-chip summing requested	N	N
Observation mode	POINTING	POINTING	Subarray requested	1/4	1/4
Pointing RA	189.445053	189.4157497660799	Subarray start row	0	385
Pointing Dec	26.708670	26.71620575138076	Subarray row count	1024	256
Pointing Roll	133.122487	133.2922486156651	Alternating exposures requested	N	N
SIM focus pos (mm)	-0.684267	-0.6828225247311905	Primary exposure time	0.000000	1.1
SIM defocus (mm)	0	0.001444936568705701			
SIM translation stage pos (mm)	-190.132523	-190.1400660498719			
SIM translation stage offset (mm)	0	0.00754346686406393			
Observation start time	131928747.184000	131927445.70403			
Observation start date	2002-03-07T22:51:23	2002-03-07T22:30:45			
Observation end time	131938747.184000	131939145.0545			
Observation end date	2002-03-08T01:38:03	2002-03-08T01:45:45			
Read mode	TIMED	TIMED			

## 2.3 Aspect





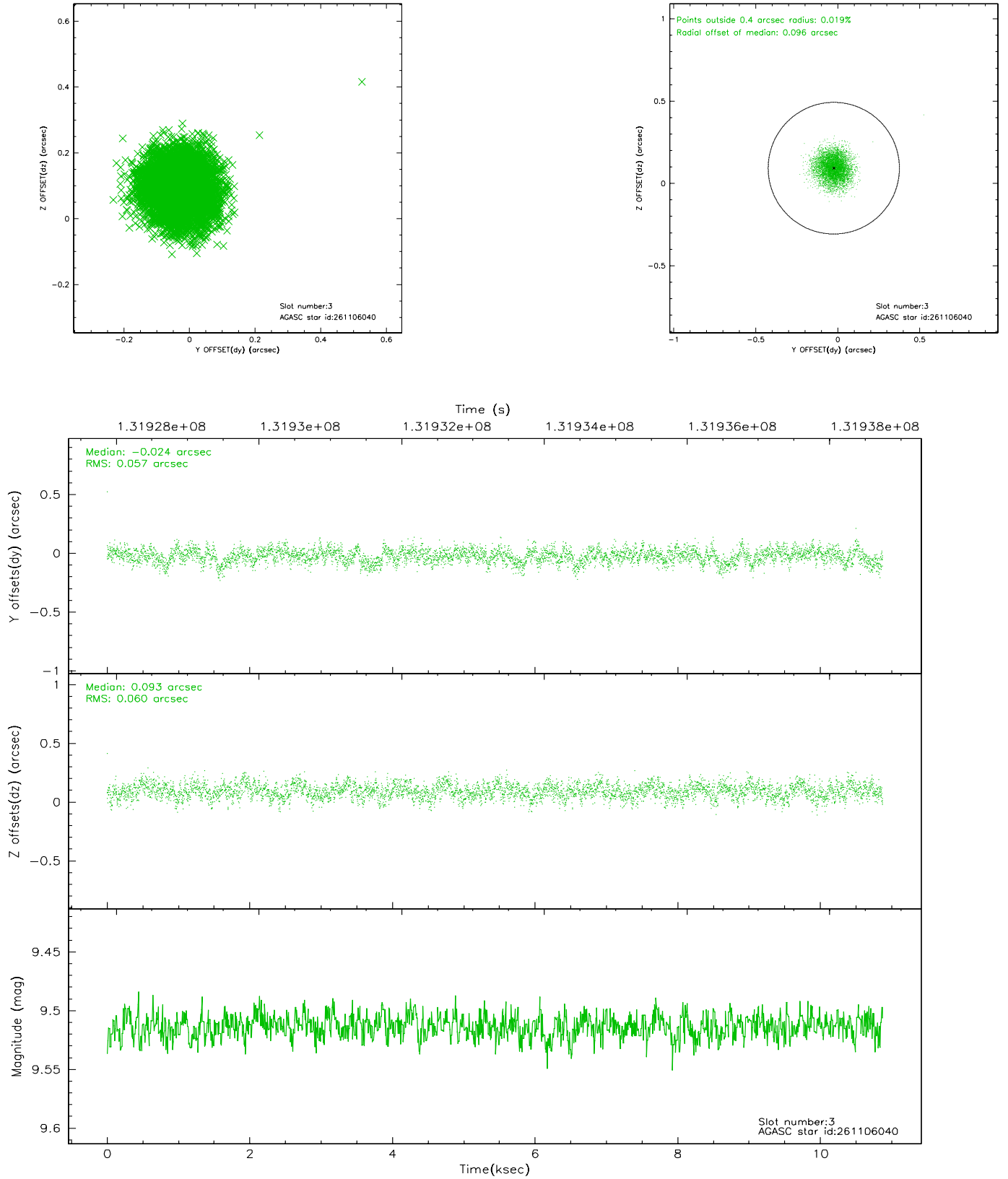
### Slot Statistics

slot	status	id	mag	n_pts	med_dy	med_dz	dr1	dr2	ra	dec	mean_y	mean_z
0	FID	ACIS-S-2	7.12	2653	-0.021	0.033	0.006	0.011	0.000000	0.000000	-755.43	-1727.49
1	FID	ACIS-S-4	7.20	2653	-0.069	0.001	0.005	0.009	0.000000	0.000000	2157.54	180.53
2	FID	ACIS-S-5	7.24	2653	0.059	-0.026	0.007	0.011	0.000000	0.000000	-1807.62	174.64
3	GUIDE	261106040	9.51	5300	-0.024	0.093	0.089	0.140	190.359276	26.719638	-1973.28	-2180.20
4	GUIDE	261104504	9.21	5299	0.046	0.045	0.080	0.131	189.971784	26.502250	-1700.38	-733.74
5	GUIDE	261106896	9.50	5303	0.077	-0.111	0.106	0.170	189.696095	26.751901	-438.00	-696.44
6	GUIDE	261111336	9.18	5303	-0.129	0.064	0.085	0.136	188.497567	26.837044	2425.33	1897.80
7	GUIDE	261112288	10.26	5294	0.035	-0.092	0.161	0.260	188.699009	26.829067	1959.89	1448.37

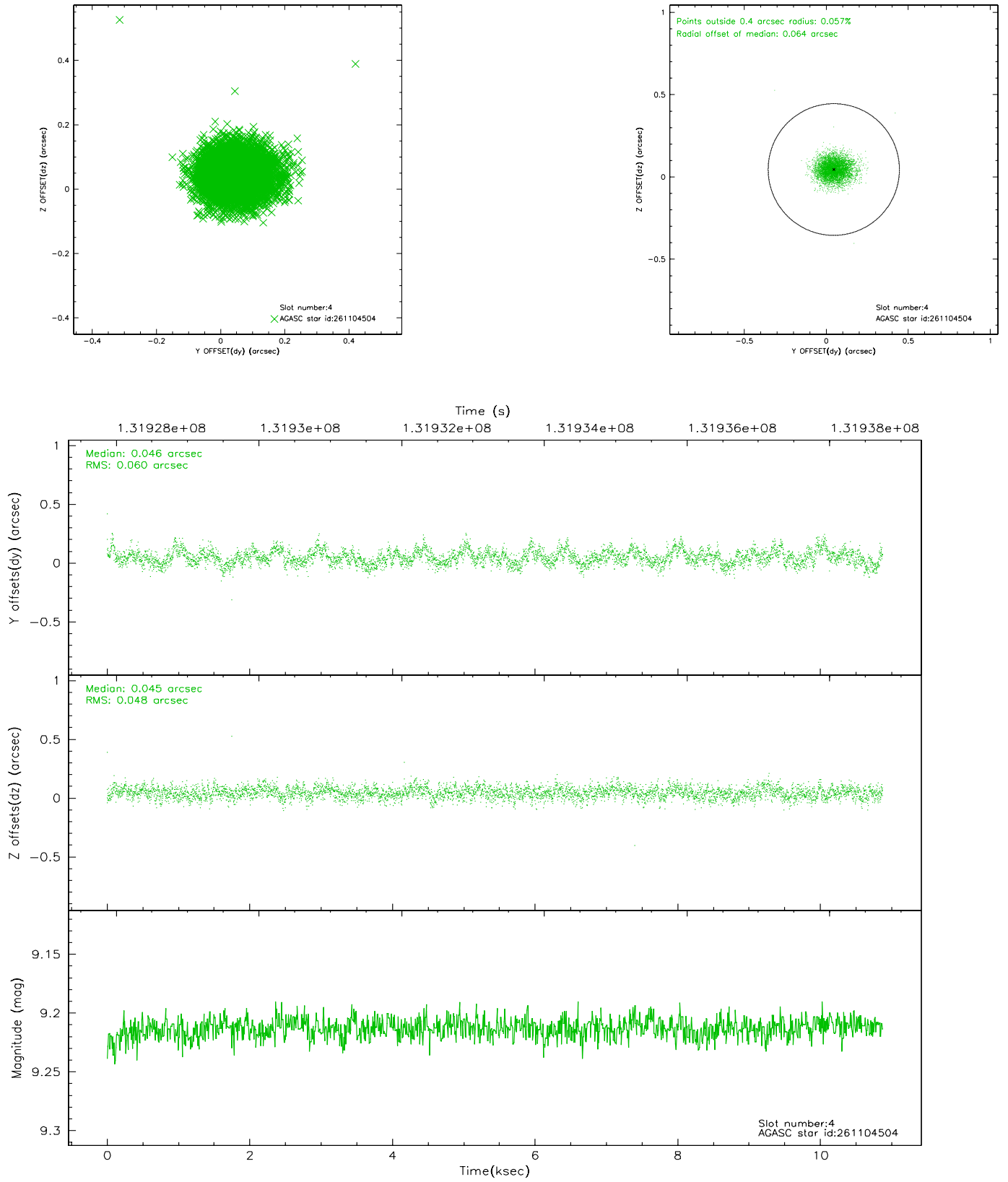


## 2.4 Star Slots

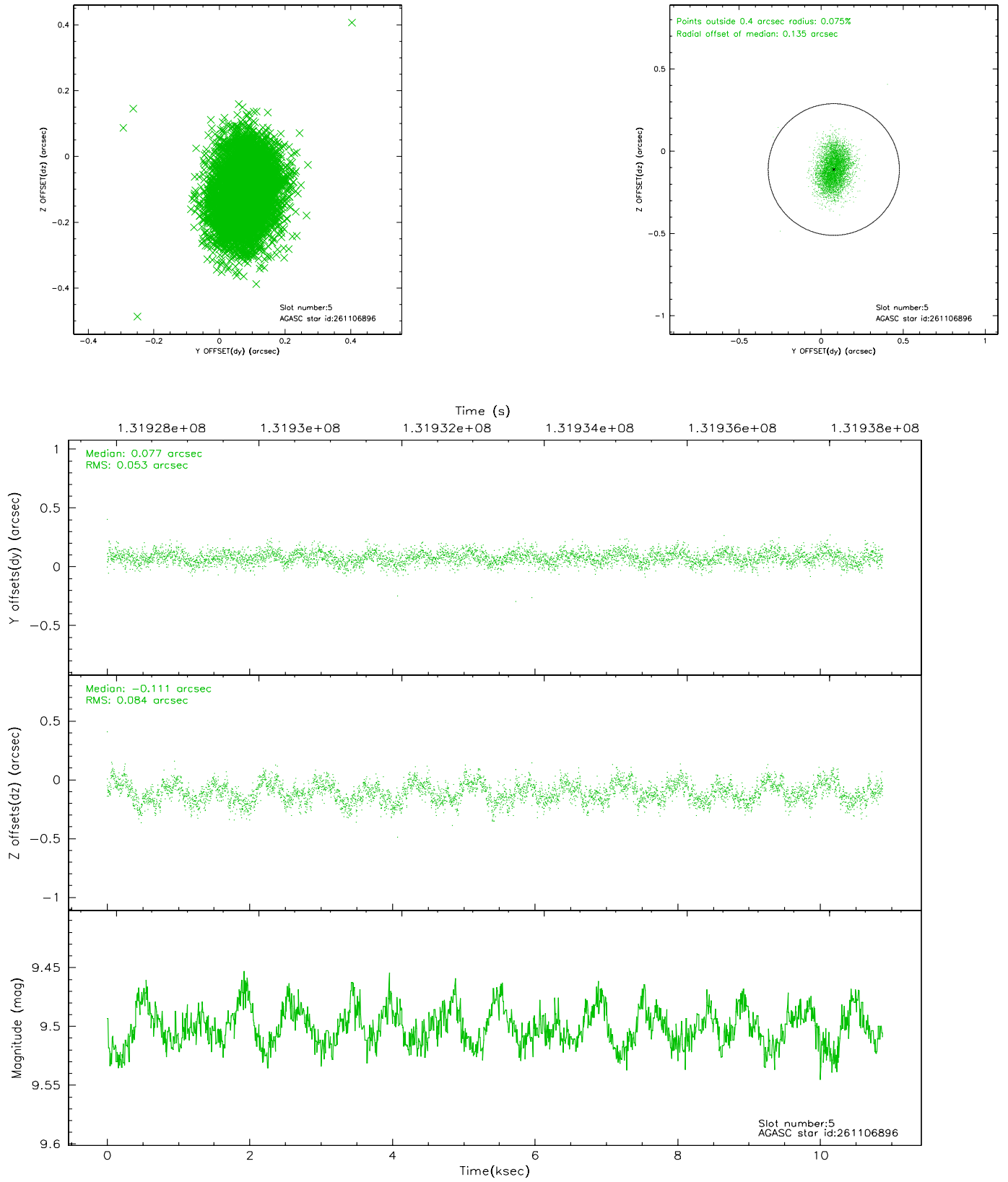
### 2.4.1 Slot 3



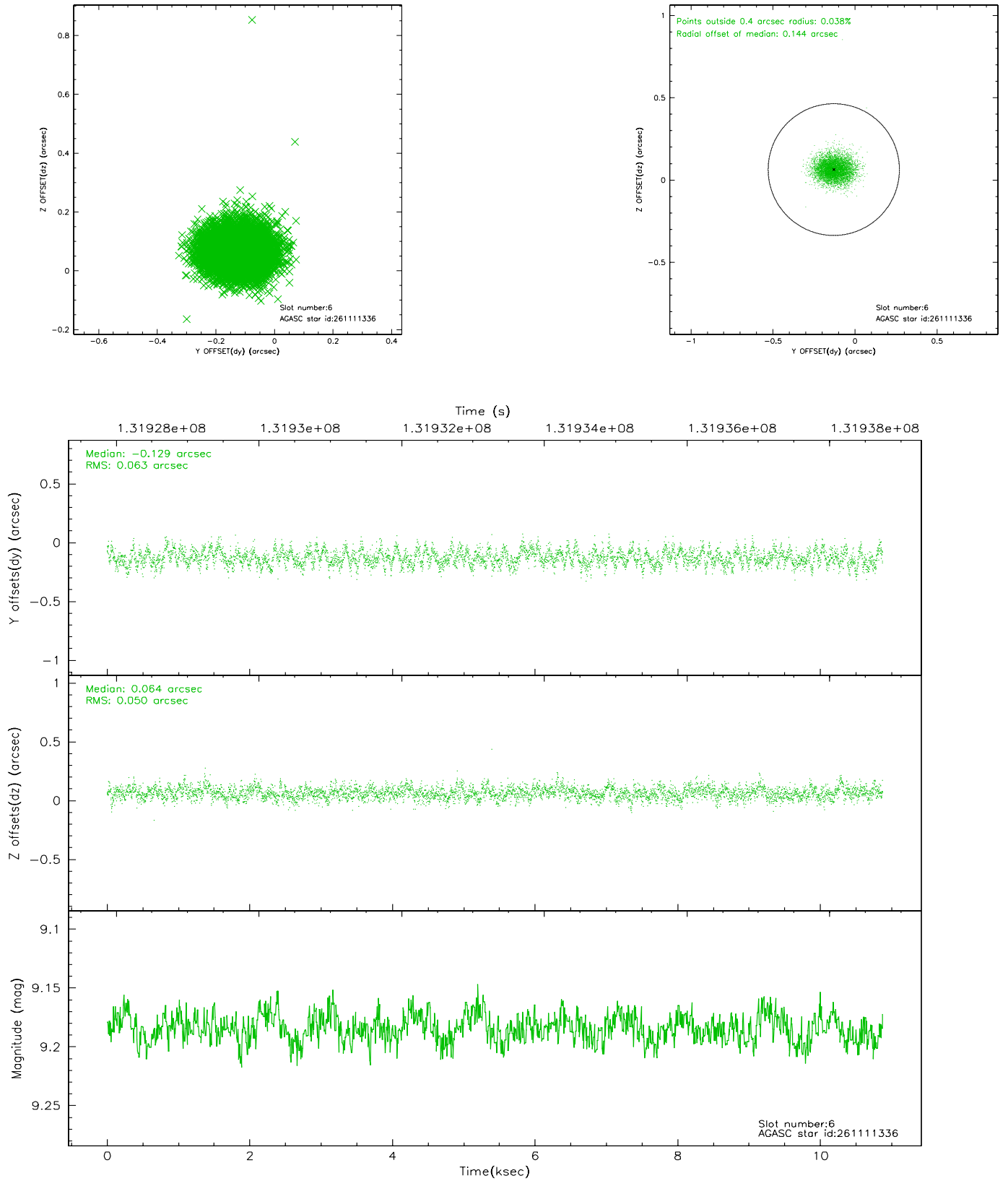
## 2.4.2 Slot 4



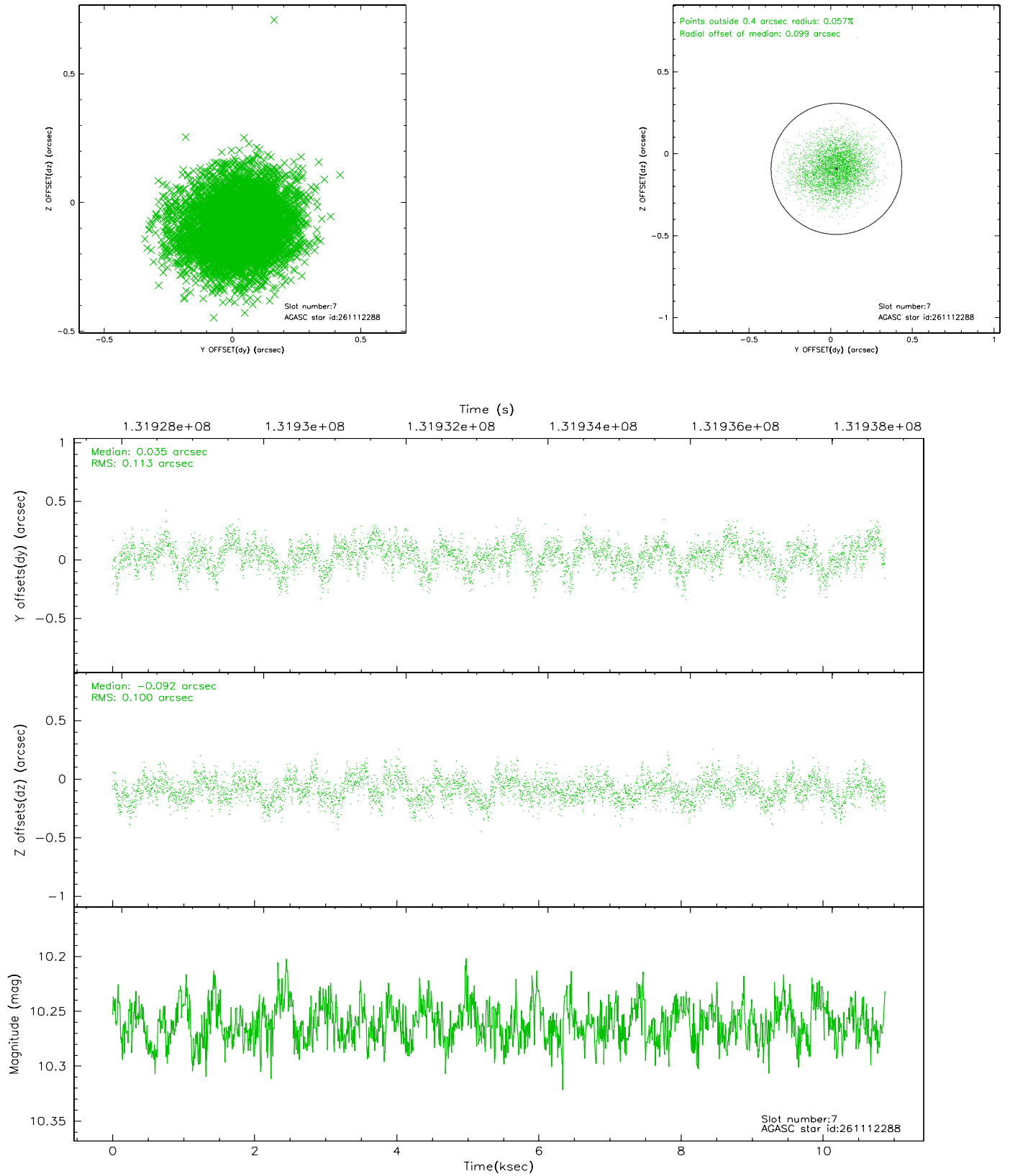
### 2.4.3 Slot 5



## 2.4.4 Slot 6

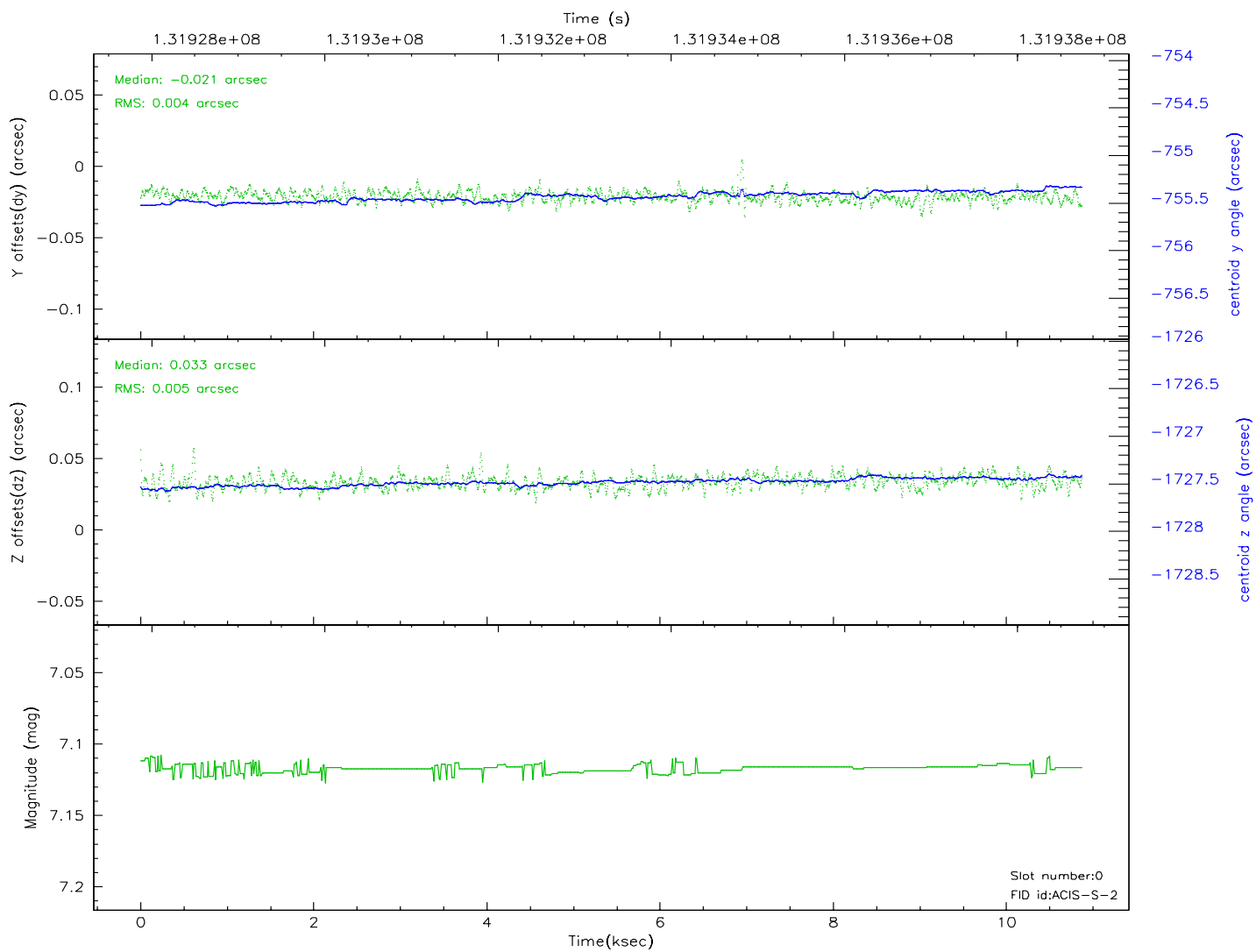
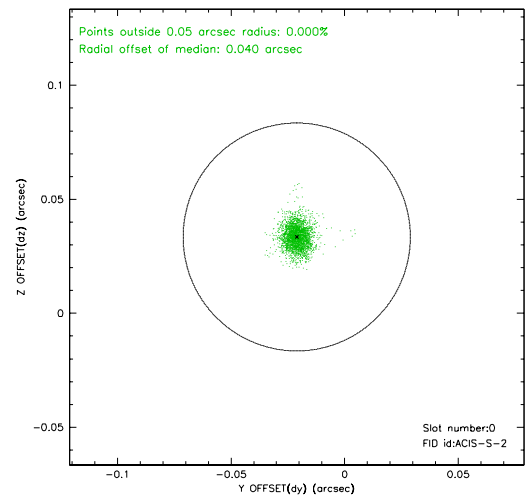
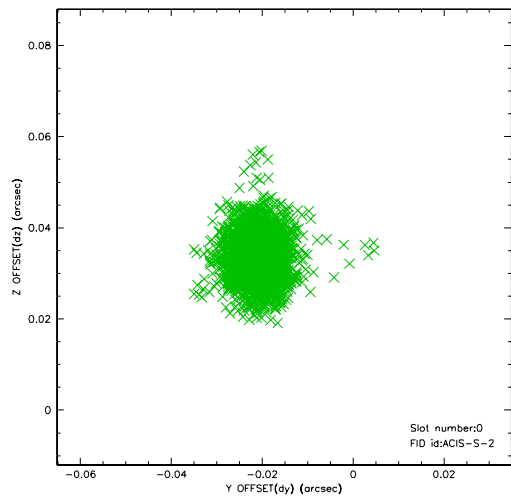


## 2.4.5 Slot 7

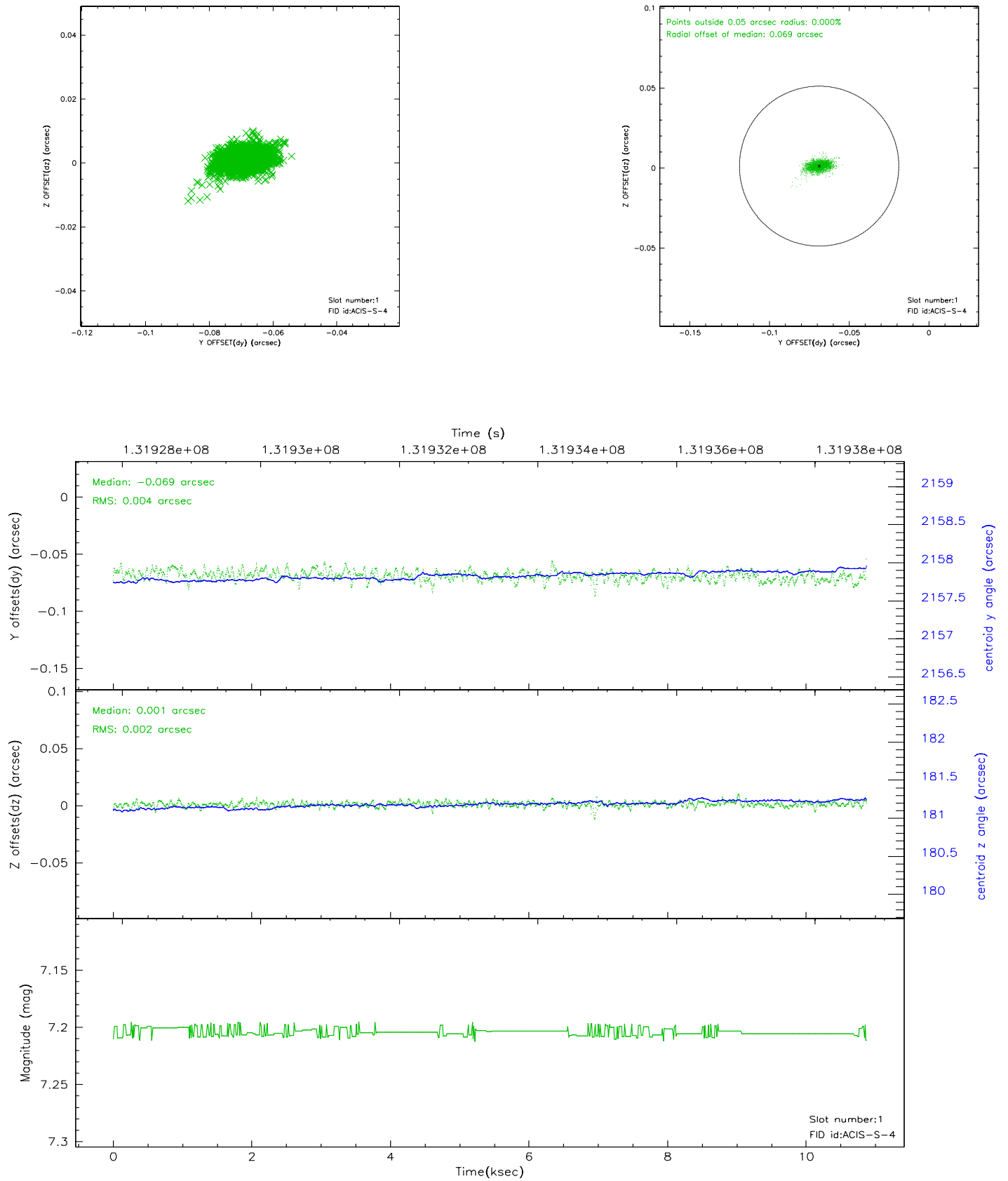


## 2.5 FID Slots

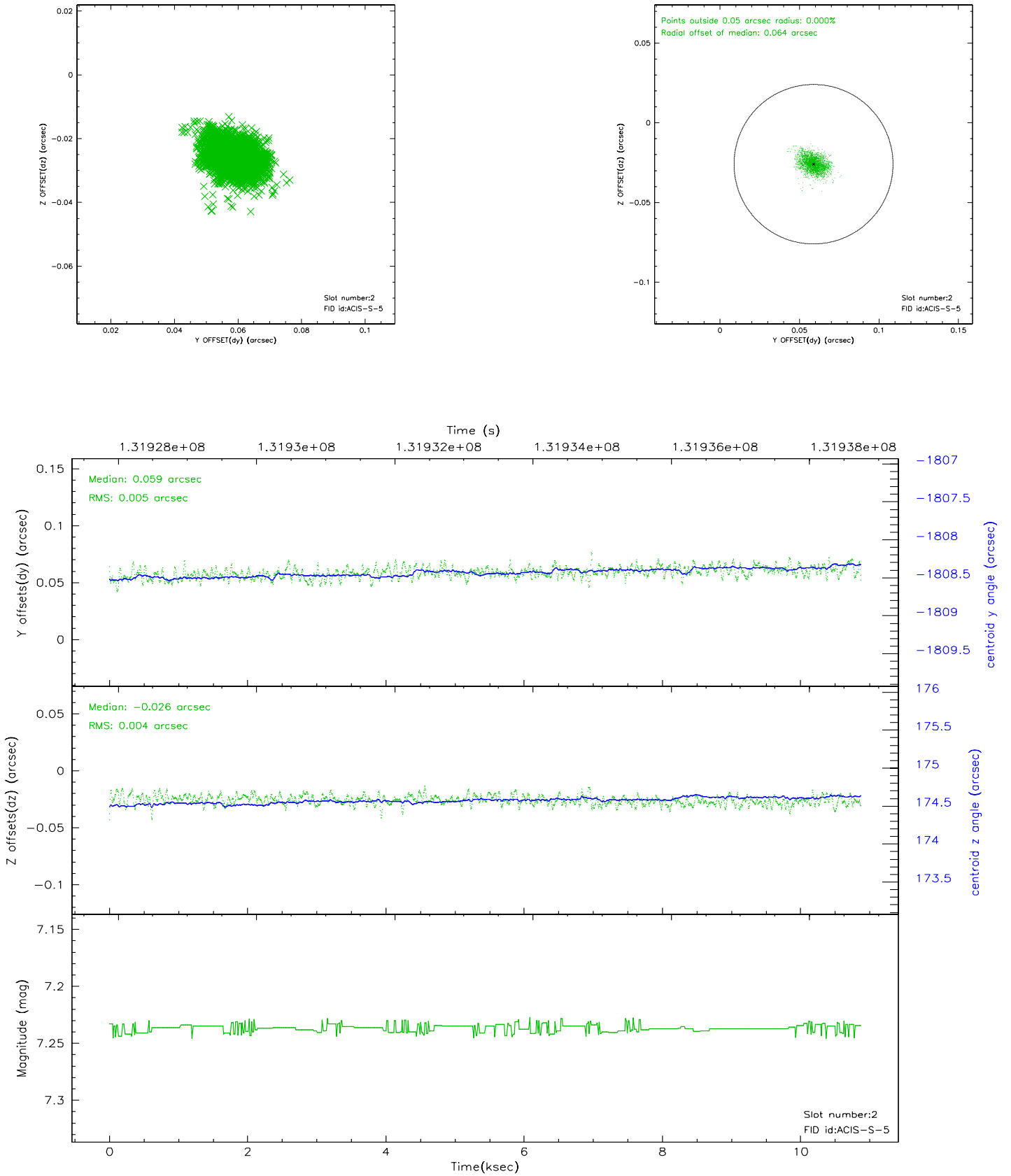
### 2.5.1 Slot 0



## 2.5.2 Slot 1

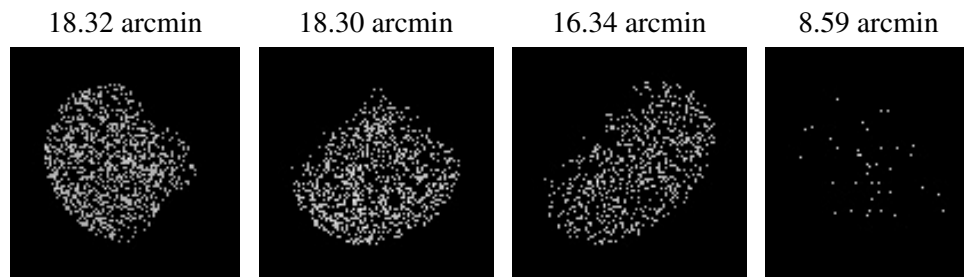


### 2.5.3 Slot 2





### 3 Point Sources



## A Summary

### A.1 Status

V&V Scientist	Beth Sundheim
V&V Date (YYYY-MM-DD)	2006.09.06
V&V Edition	1
V&V Disposition and Status	OK
V&V Charge Time	10.553

### A.2 Comments