

# V&V Reference Report

## L2 ASCDS Version : 7.6.9

Observation 2996 - L2 Version 001  
Chandra X-Ray Center

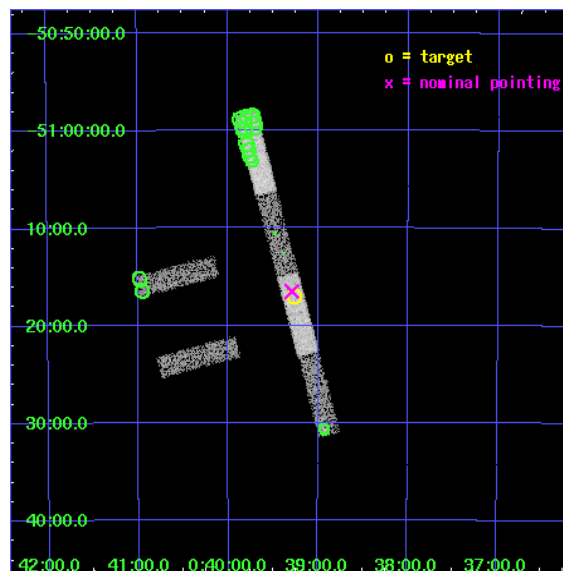
L2 Processing Date : Sep 30 2006

## Contents

<b>1</b>	<b>Front</b>	<b>2</b>
<b>2</b>	<b>OBI</b>	<b>3</b>
2.1	OBI . . . . .	3
2.1.1	Images . . . . .	3
2.1.2	Bias . . . . .	3
2.1.3	Parameters . . . . .	4
2.1.4	Events . . . . .	4
2.2	Compared Parameters . . . . .	5
2.3	Aspect . . . . .	6
2.4	Star Slots . . . . .	9
2.4.1	Slot 3 . . . . .	9
2.4.2	Slot 4 . . . . .	10
2.4.3	Slot 5 . . . . .	11
2.4.4	Slot 6 . . . . .	12
2.4.5	Slot 7 . . . . .	13
2.5	FID Slots . . . . .	14
2.5.1	Slot 0 . . . . .	14
2.5.2	Slot 1 . . . . .	15
2.5.3	Slot 2 . . . . .	16
<b>3</b>	<b>Point Sources</b>	<b>17</b>
<b>A</b>	<b>Summary</b>	<b>18</b>
A.1	Status . . . . .	18
A.2	Comments . . . . .	18

# 1 Front

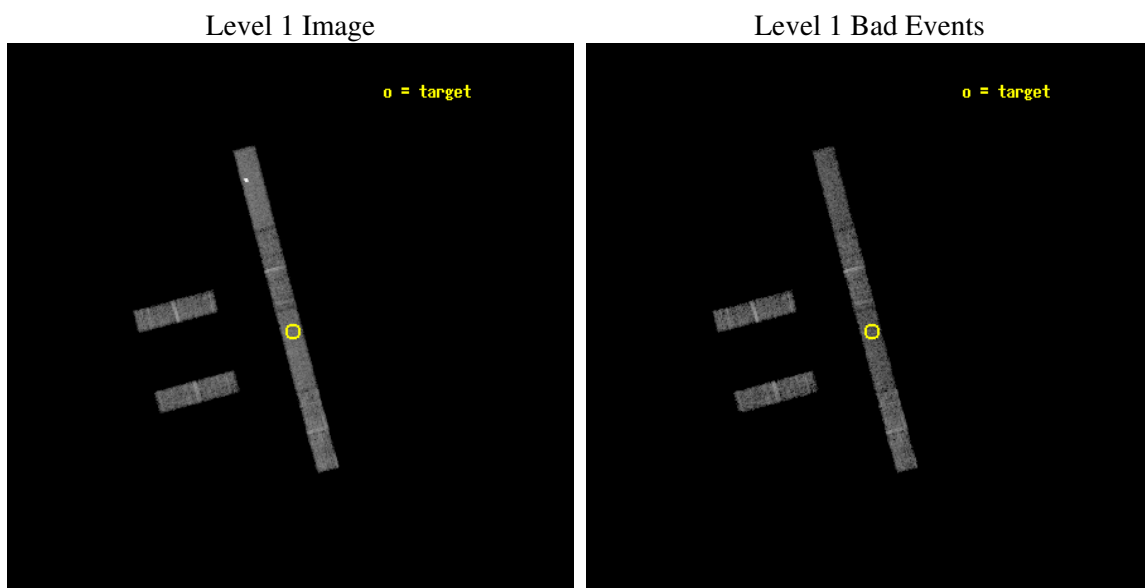
seq_num	700435
obs_id	2996
title	CHANDRA SNAPSHOT OBSERVATIONS OF SOFT X-RAY TRANSIENT AGN
observer	Dr Rick Edelson
object	WPVS 007
dtcycle	0
cycle	P
ra_targ	9.815833
dec_targ	-51.284167
ra_nom	9.8223736803005
dec_nom	-51.275382028534
roll_nom	75.120618025191
revision	2
ontime	9646.9999477267
livetime	9300.0244886239
ontime2	9646.9999477267
ontime3	9646.9999477267
ontime5	9646.9999477267
ontime6	9646.9999477267
ontime7	9646.9999477267
ontime8	9646.9999477267
l2events	22298



## 2 OBI

### 2.1 OBI

#### 2.1.1 Images



#### 2.1.2 Bias

Chip 2

Chip 3

Chip 5



Chip 6

Chip 7

Chip 8



### 2.1.3 Parameters

obi_num	0
ascdsver	7.6.9
caldbver	3.2.3
date	2006-09-30T06:40:35
revision	2

sched_exp_time	9500.000000
ontime	10235.005671114
ontime2	10233.864631146
ontime3	10225.877351165
ontime5	10235.005671114
ontime6	10235.005671114
ontime7	10235.005671114
ontime8	10235.005671114
l1events	119689

### 2.1.4 Events

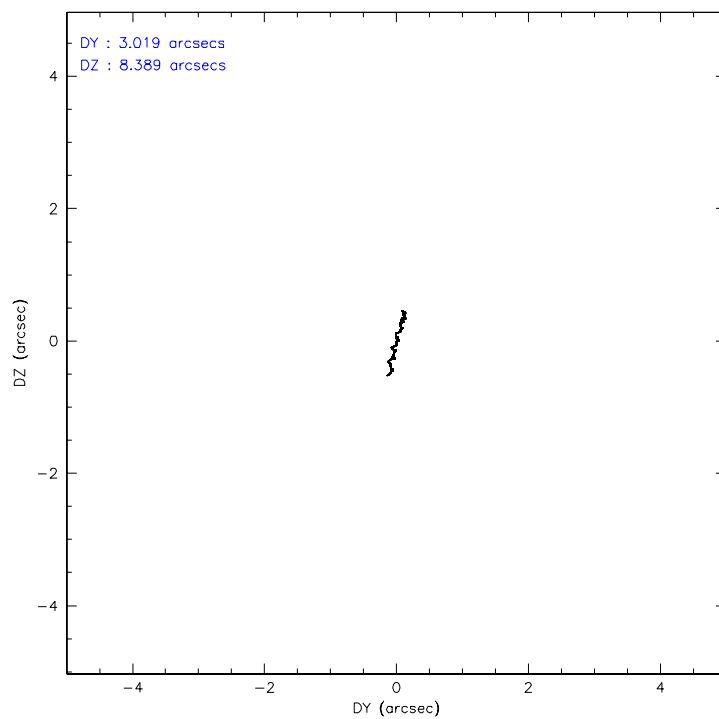
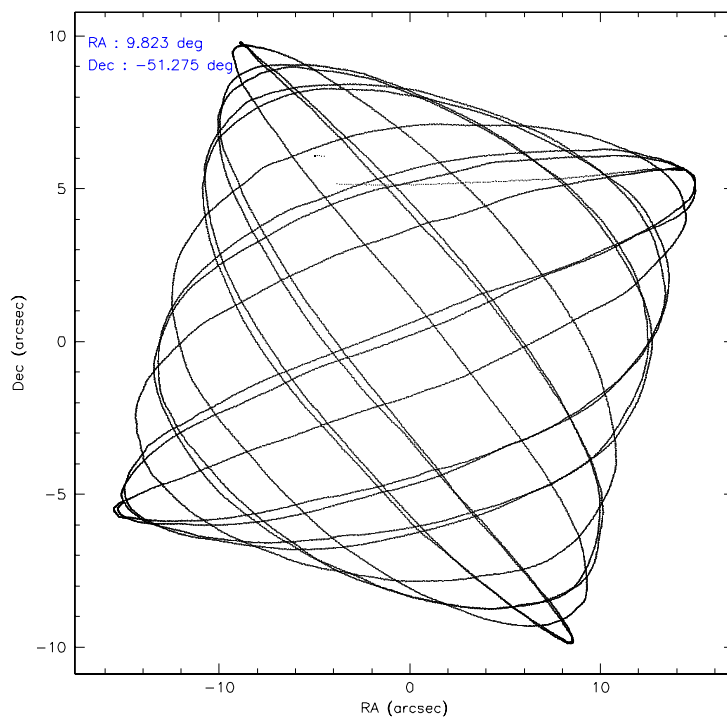
	ccd 2	ccd 3	ccd 5	ccd 6	ccd 7	ccd 8
level 1 events	17773	16269	27434	17127	19659	21427
rejected events	15937	14462	12736	15218	12024	17547
rejected %	89%	88%	46%	88%	61%	81%

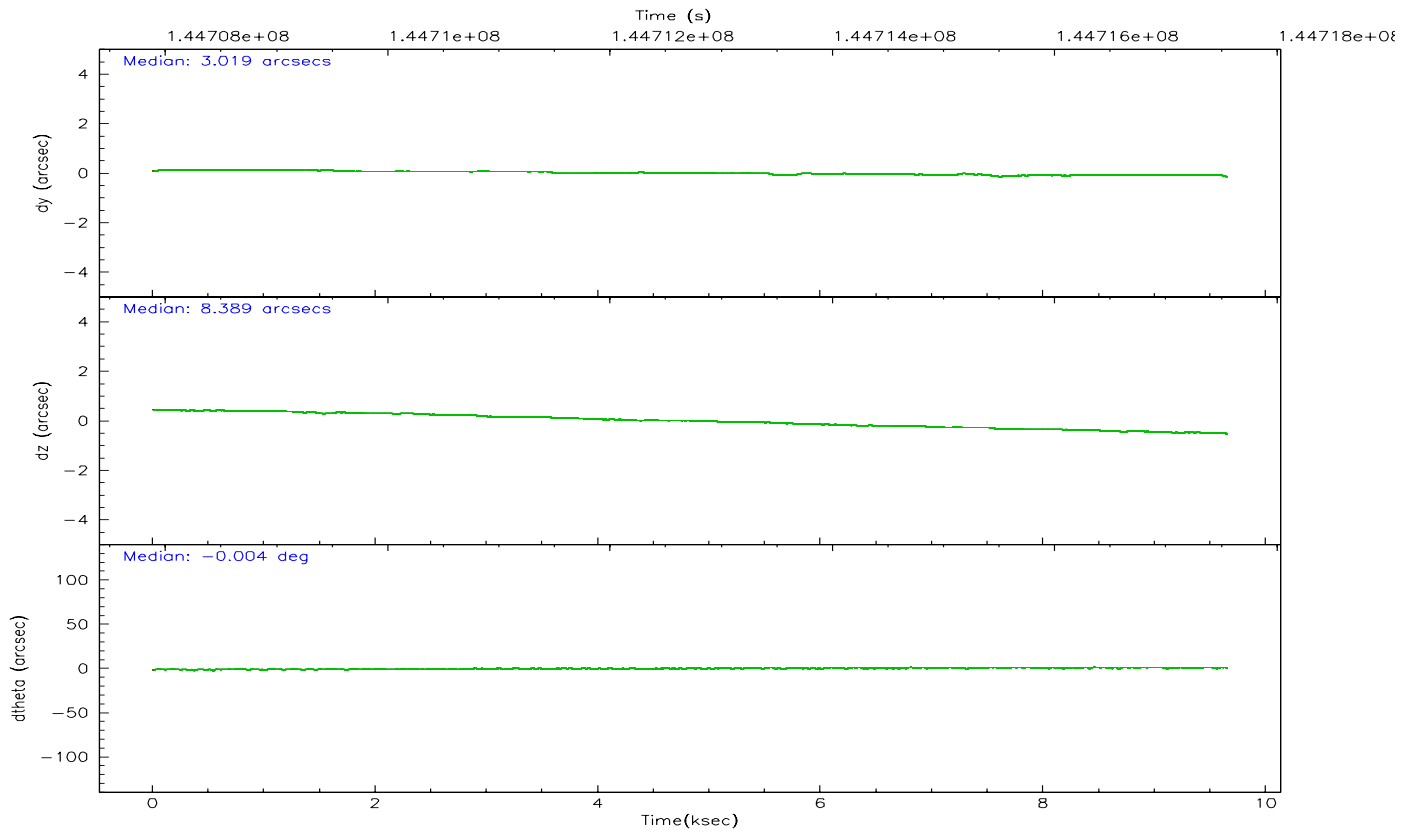
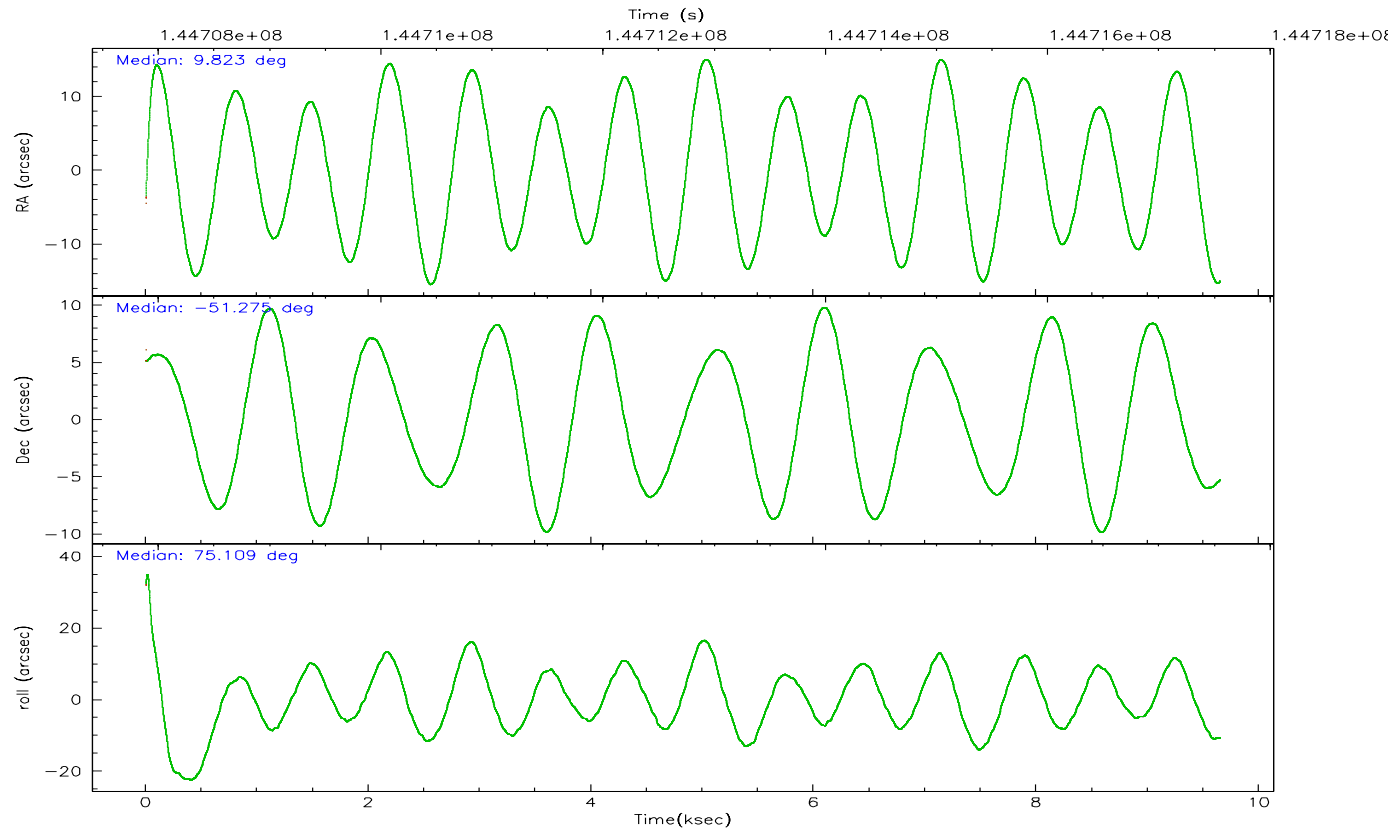
	ccd 2	ccd 3	ccd 5	ccd 6	ccd 7	ccd 8
grade 0 events	776	773	6686	781	637	1226
	4%	4%	24%	4%	3%	5%
grade 1 events	2	4	22	7	7	11
	0%	0%	0%	0%	0%	0%
grade 2 events	375	316	2977	361	1862	798
	2%	1%	10%	2%	9%	3%
grade 3 events	256	270	336	280	575	488
	1%	1%	1%	1%	2%	2%
grade 4 events	255	261	309	265	573	437
	1%	1%	1%	1%	2%	2%
grade 5 events	590	572	1139	633	1365	794
	3%	3%	4%	3%	6%	3%
grade 6 events	300	289	5289	342	4447	1144
	1%	1%	19%	1%	22%	5%
grade 7 events	15219	13784	10676	14458	10193	16529
	85%	84%	38%	84%	51%	77%

## 2.2 Compared Parameters

Parameter	Planned	Actual	Parameter	Planned	Actual
Instrument	ACIS	ACIS	Obspar format version number	6	6
Detector	ACIS-235678	ACIS-235678	Obspar file type	PREDICTED	ACTUAL
Grating	NONE	NONE	Obspar update status	NONE	UPDATED
Data mode	FAINT	FAINT	Number of optional ACIS chips dropped	0	0
Observation mode	POINTING	POINTING	On-chip summing requested	N	N
Pointing RA	9.834291	9.822373680300538	Subarray requested	1/4	1/4
Pointing Dec	-51.301582	-51.27538202853445	Subarray start row	0	385
Pointing Roll	74.973234	75.12061802519119	Subarray row count	1024	256
SIM focus pos (mm)	-0.684267	-0.6828225247311905	Alternating exposures requested	N	N
SIM defocus (mm)	0	0.001444936568705701	Primary exposure time	0.000000	1.1
SIM translation stage pos (mm)	-190.132523	-190.1400660498719			
SIM translation stage offset (mm)	0	0.00754346686406393			
Observation start time	144708045.184000	144706993.50056			
Observation start date	2002-08-02T20:39:41	2002-08-02T20:23:13			
Observation end time	144717545.184000	144718173.68852			
Observation end date	2002-08-02T23:18:01	2002-08-02T23:29:33			
Read mode	TIMED	TIMED			

## 2.3 Aspect





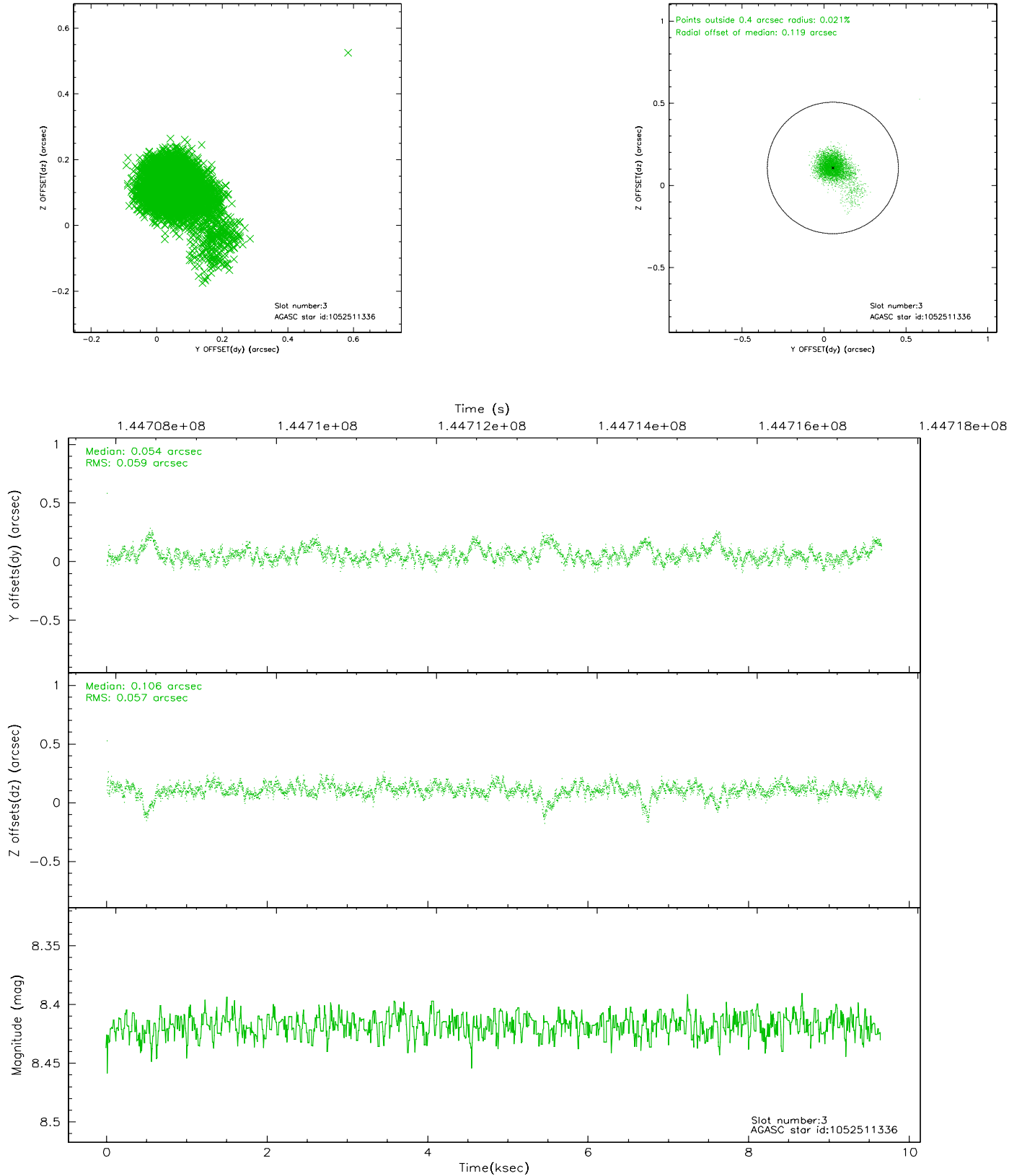
### Slot Statistics

slot	status	id	mag	n_pts	med_dy	med_dz	dr1	dr2	ra	dec	mean_y	mean_z
0	FID	ACIS-S-2	7.11	2354	0.003	0.021	0.007	0.012	0.000000	0.000000	-755.67	-1729.56
1	FID	ACIS-S-4	7.20	2354	-0.057	-0.007	0.008	0.014	0.000000	0.000000	2157.30	178.31
2	FID	ACIS-S-5	7.24	2354	0.023	-0.005	0.007	0.011	0.000000	0.000000	-1807.77	172.63
3	GUIDE	1052511336	8.42	4708	0.054	0.106	0.078	0.154	10.026754	-51.744882	-1430.20	-827.75
4	GUIDE	1052508976	8.83	4706	-0.100	0.243	0.130	0.204	10.899424	-50.976580	1739.31	-2031.77
5	GUIDE	1052508720	9.41	4707	-0.213	0.295	0.106	0.182	10.891663	-51.295828	621.42	-2297.14
6	GUIDE	1052516688	9.49	4636	0.018	0.035	0.094	0.181	9.618699	-51.057391	722.15	699.18
7	BAD	1052516392	10.35	4358	0.256	-0.727	0.148	0.242	8.930633	-51.408059	-908.80	1858.19

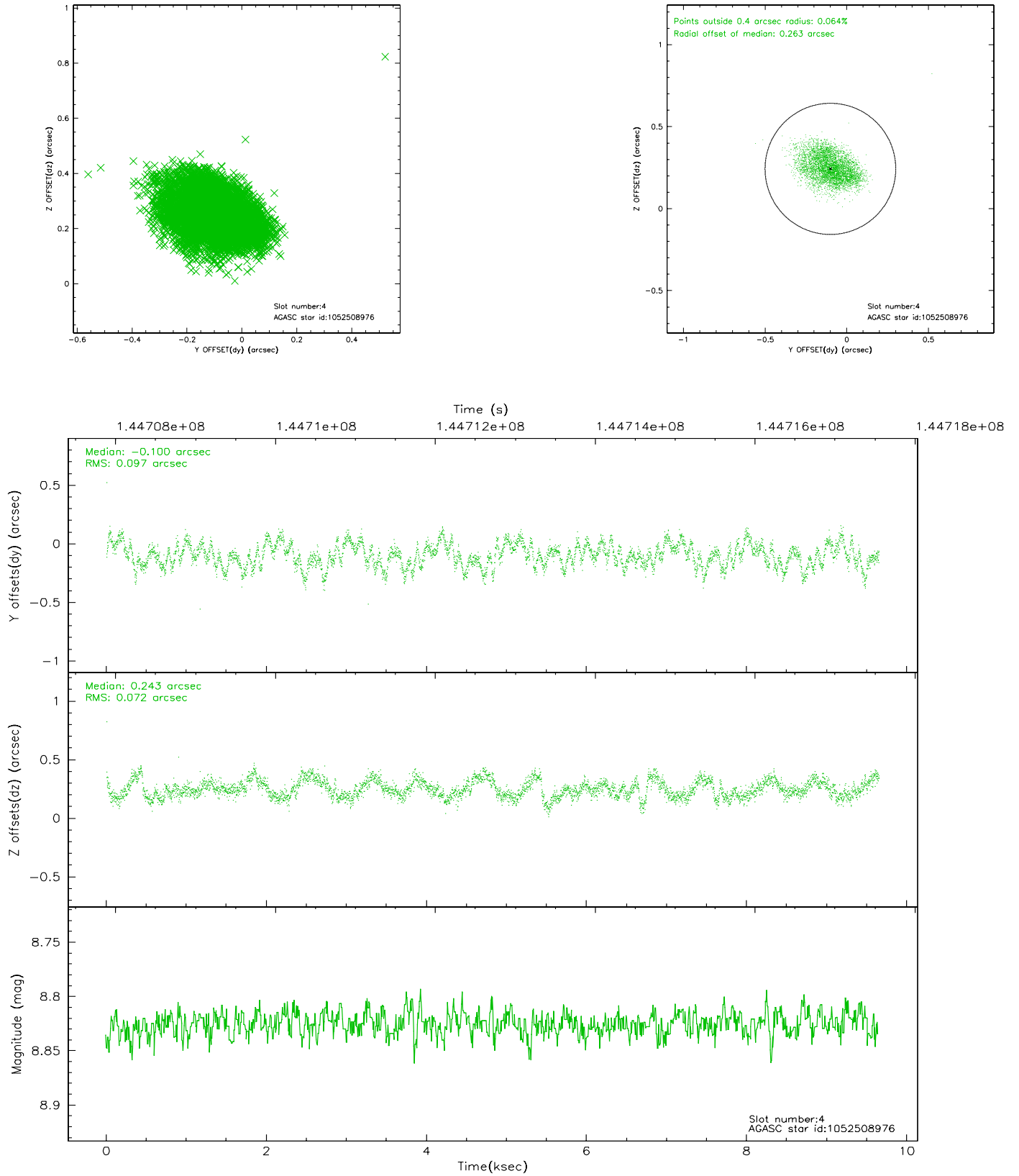


## 2.4 Star Slots

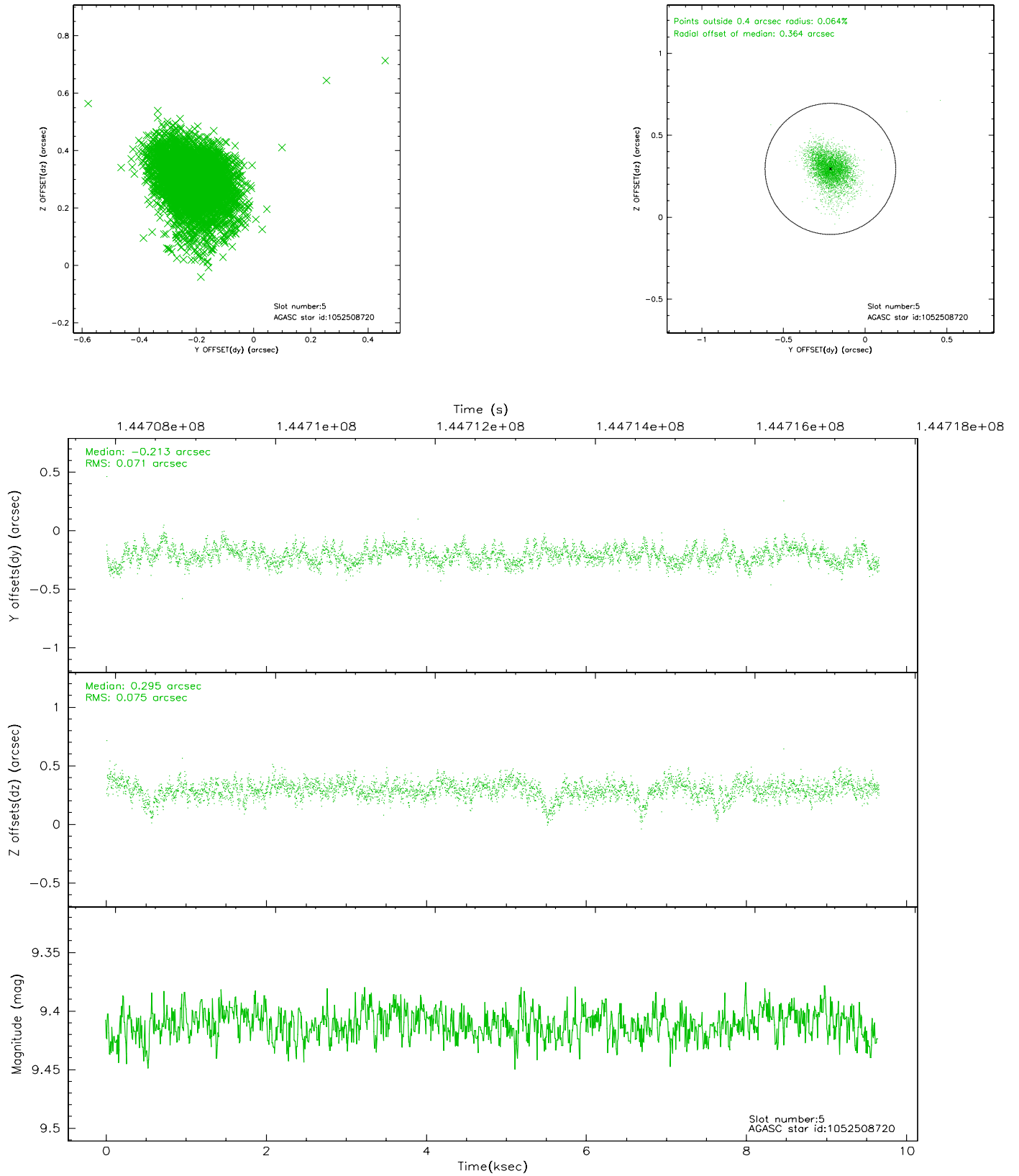
### 2.4.1 Slot 3



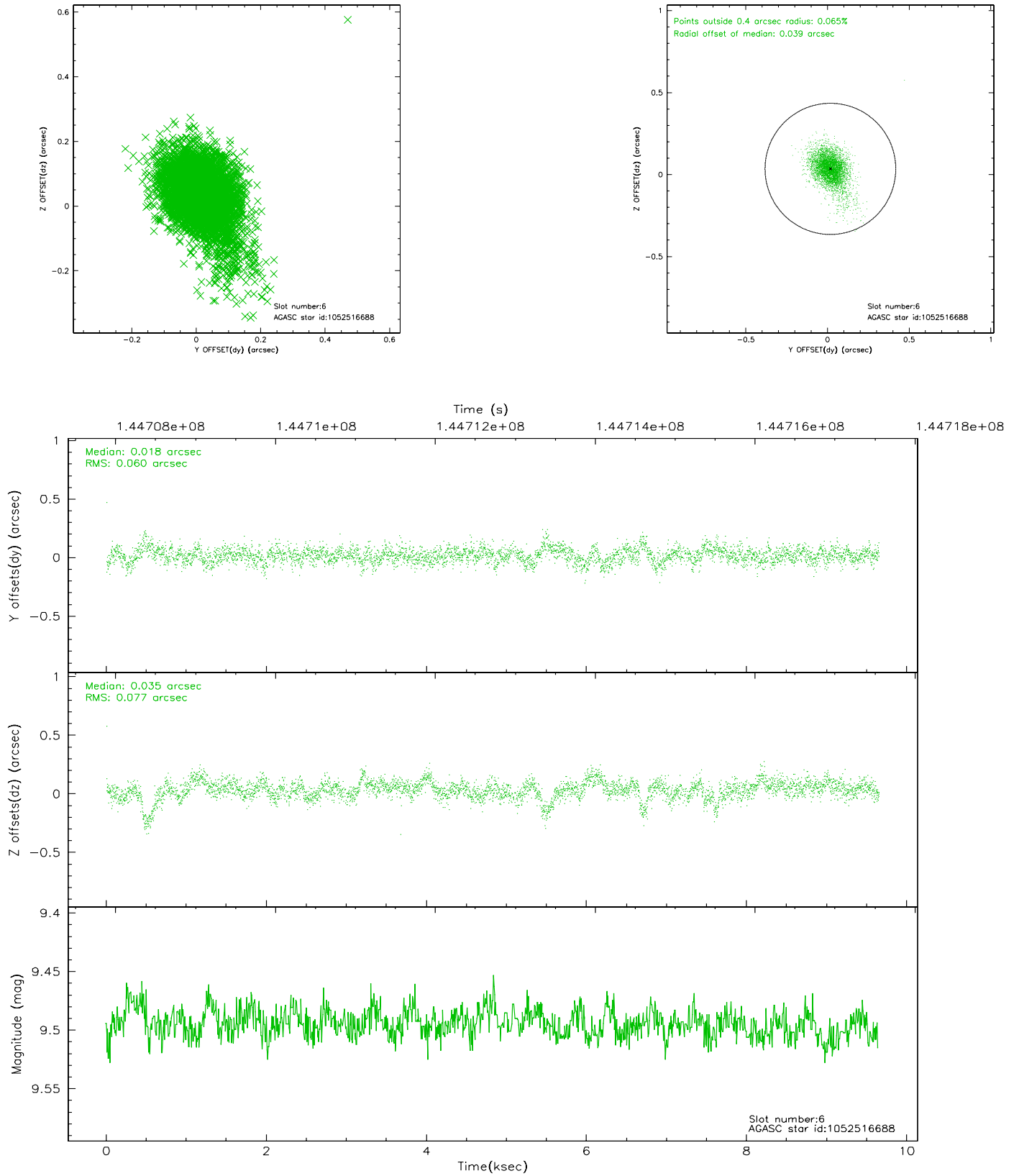
## 2.4.2 Slot 4



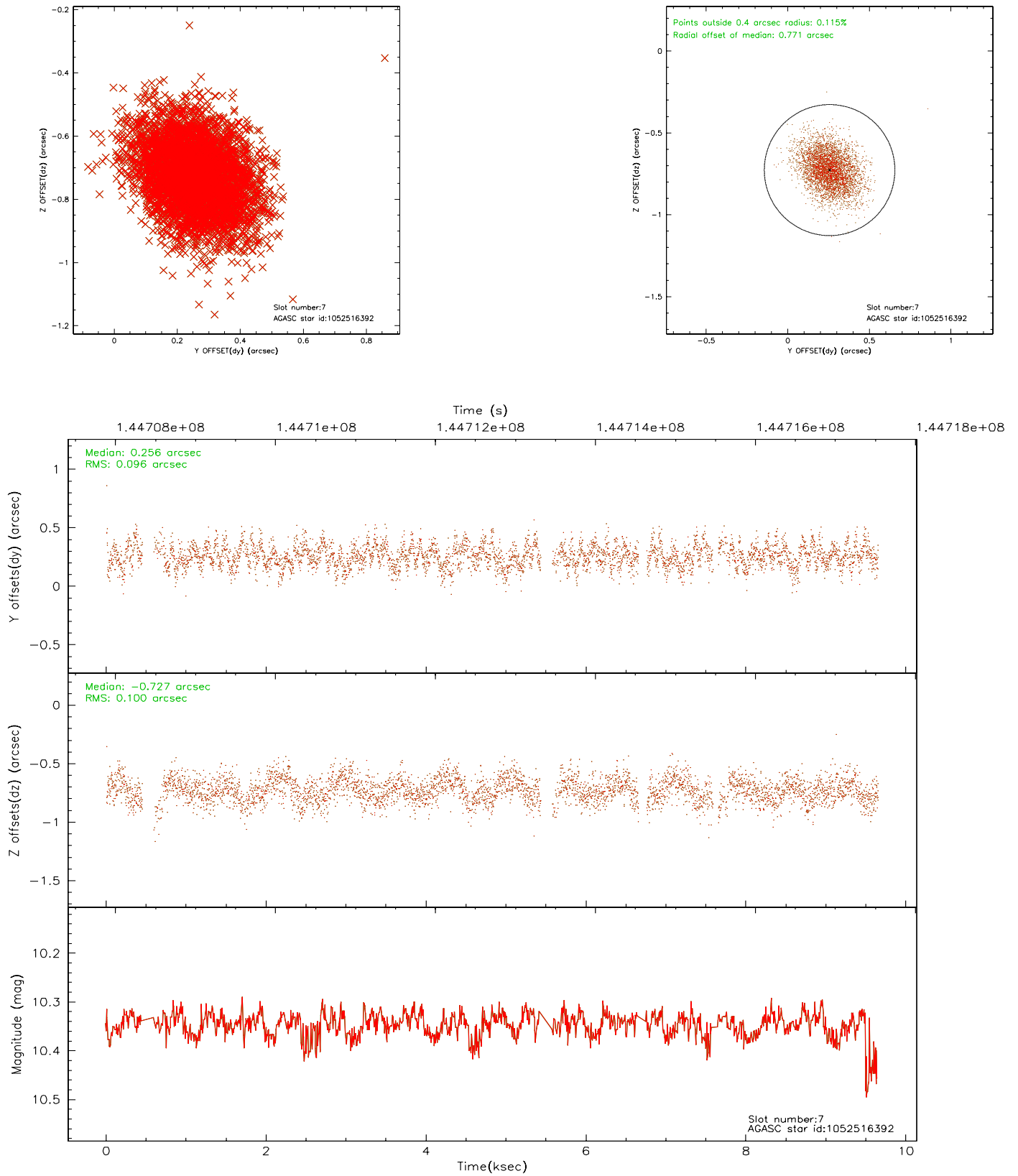
### 2.4.3 Slot 5



## 2.4.4 Slot 6

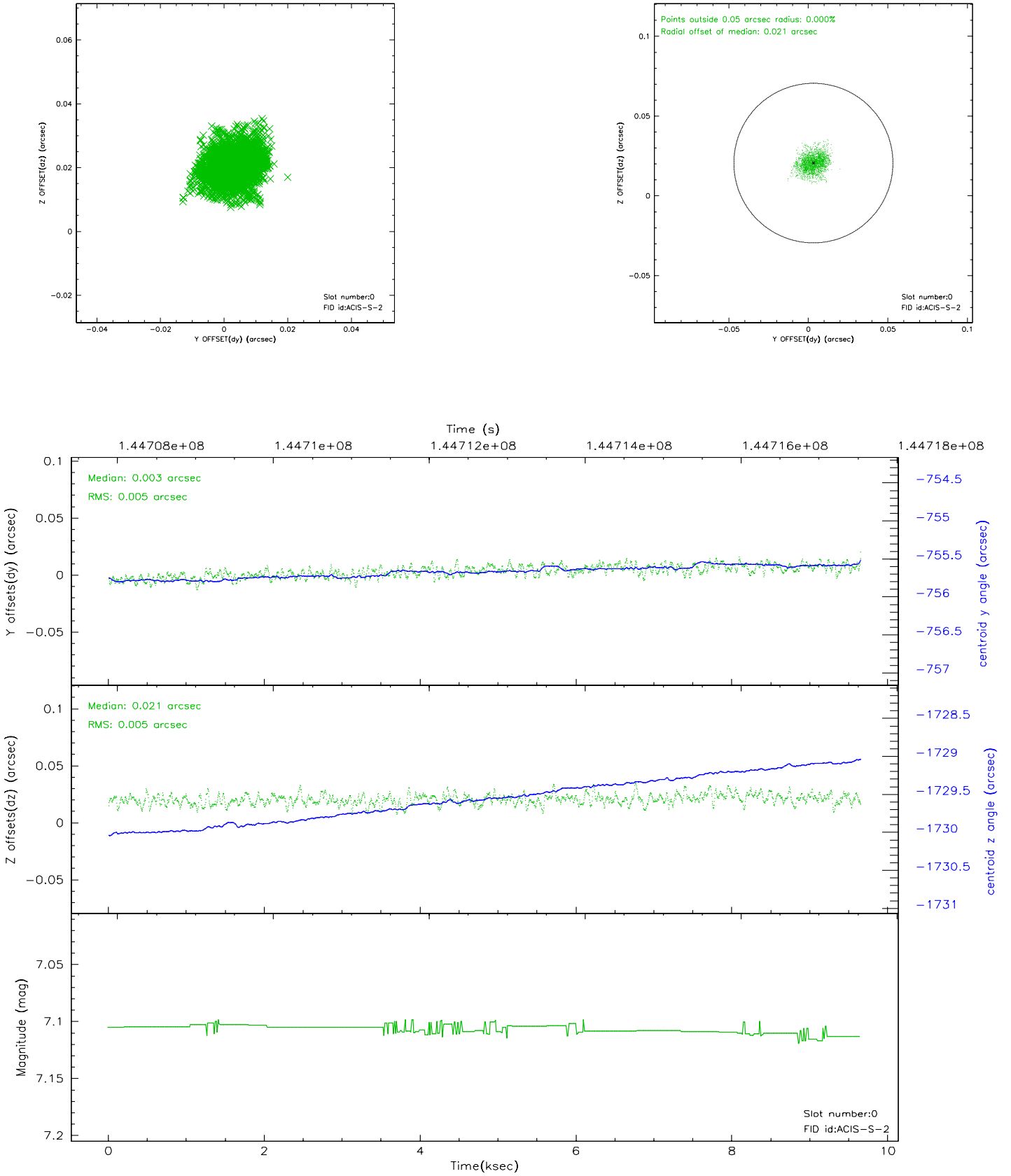


## 2.4.5 Slot 7

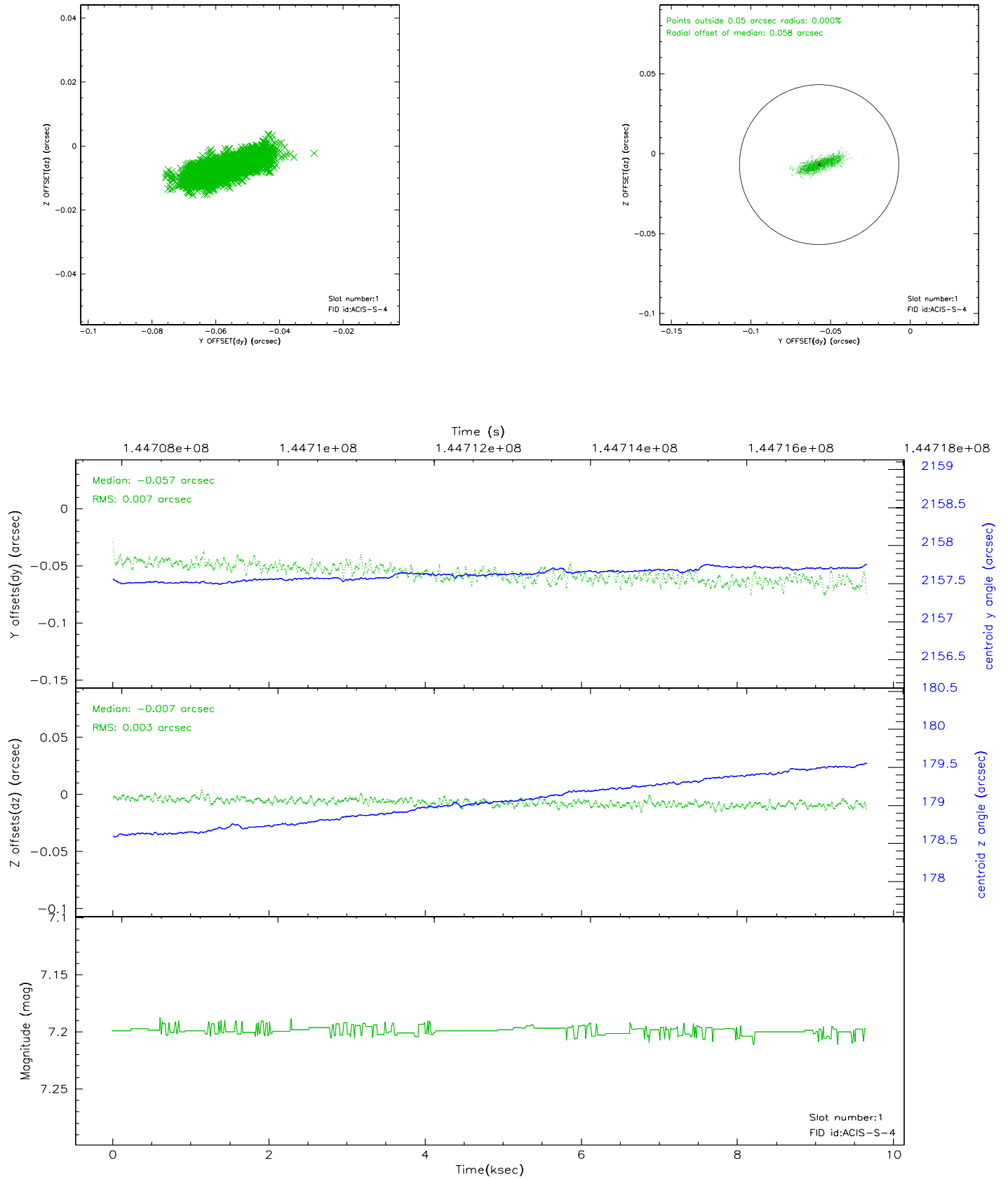


## 2.5 FID Slots

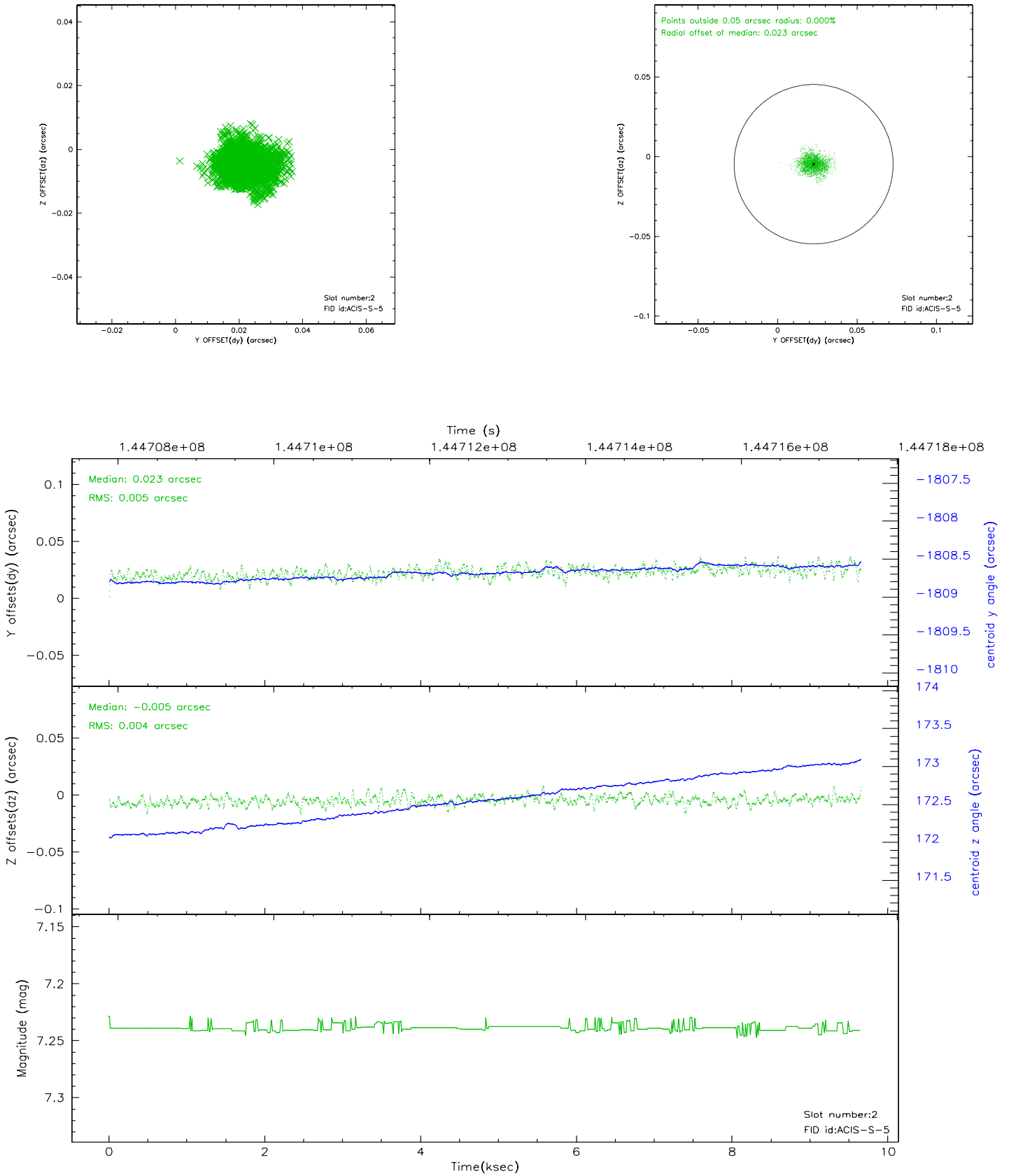
### 2.5.1 Slot 0



## 2.5.2 Slot 1

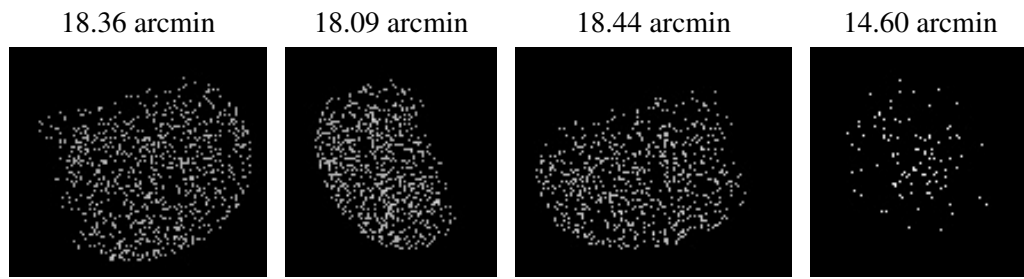


### 2.5.3 Slot 2





### 3 Point Sources



# A Summary

## A.1 Status

V&V Scientist	Jen Lauer
V&V Date (YYYY-MM-DD)	2006.10.02
V&V Edition	1
V&V Disposition and Status	OK
V&V Charge Time	9.646

## A.2 Comments

Window preference not met.

Slot 7 is only tracked for 92% of the observation and is therefore not included in the aspect solution calculations. The aspect solution is not expected to be degraded by the loss of one guide star.