

V&V Reference Report

L2 ASCDS Version : 8.4.5

Observation 2994 - L2 Version 5
Chandra X-Ray Center

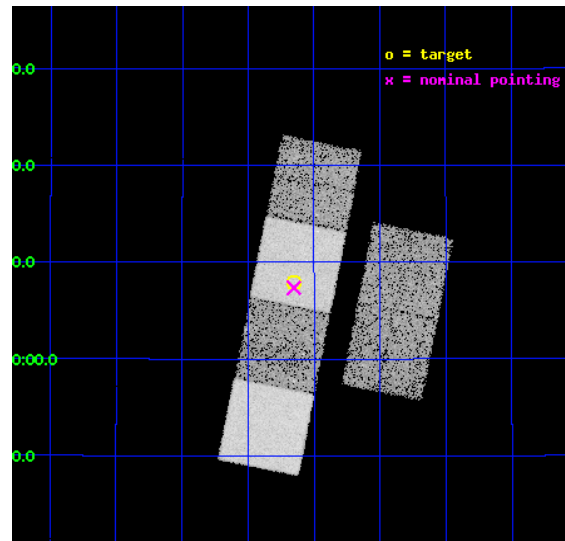
L2 Processing Date : Oct 17 2012

Contents

1	Front	2
2	OBI	3
2.1	OBI	3
2.1.1	Images	3
2.1.2	Bias	3
2.1.3	Parameters	4
2.1.4	Events	4
2.2	Compared Parameters	5
2.3	Aspect	6
2.4	Star Slots	9
2.4.1	Slot 3	9
2.4.2	Slot 5	10
2.4.3	Slot 6	11
2.4.4	Slot 7	12
2.5	FID Slots	13
2.5.1	Slot 0	13
2.5.2	Slot 1	14
2.5.3	Slot 2	15
A	Summary	16
A.1	Status	16
A.2	Comments	16

1 Front

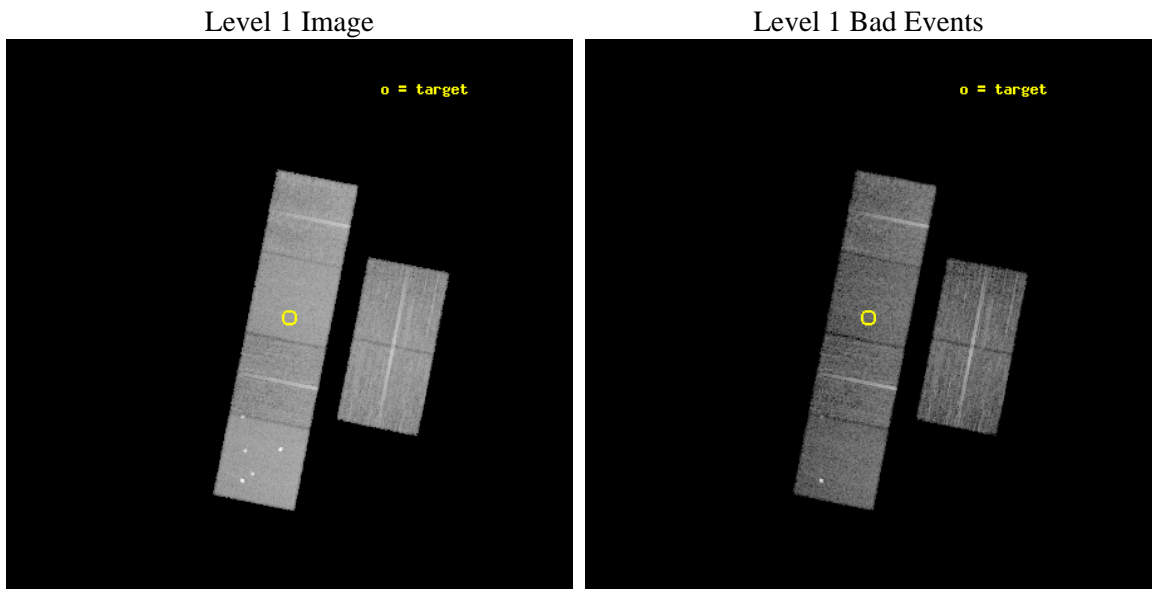
seq_num	700433	Sequence number
obs_id	2994	Observation id
title	CHANDRA OBSERVATIONS OF A POPULATION OF TYPE 2 QUASARS DISCOVERED IN THE DPOSS	Proposal title
observer	PROF. S. DJORGOVSKI	Principal investigator
object	PSS 2222+2307	Source name
dtcycle	0	
cycle	P	events from which exps? Prim/Second/Both
ra_targ	335.662917	Observer's specified target RA [deg]
dec_targ	23.132222	Observer's specified target Dec [deg]
ra_nom	335.66313044245	Nominal RA [deg]
dec_nom	23.122551046777	Nominal Dec [deg]
roll_nom	281.24614324938	Nominal Roll [deg]
revision	5	Processing version of data
ontime	13717.53311187	Sum of GTIs [s]
livetime	13543.833447901	Livetime [s]
ontime2	13720.815191835	Sum of GTIs [s]
ontime3	13720.65100193	Sum of GTIs [s]
ontime5	13717.492071867	Sum of GTIs [s]
ontime6	13723.932982296	Sum of GTIs [s]
ontime7	13717.53311187	Sum of GTIs [s]
ontime8	13714.127901852	Sum of GTIs [s]
l2events	129566	Number of level 2 events



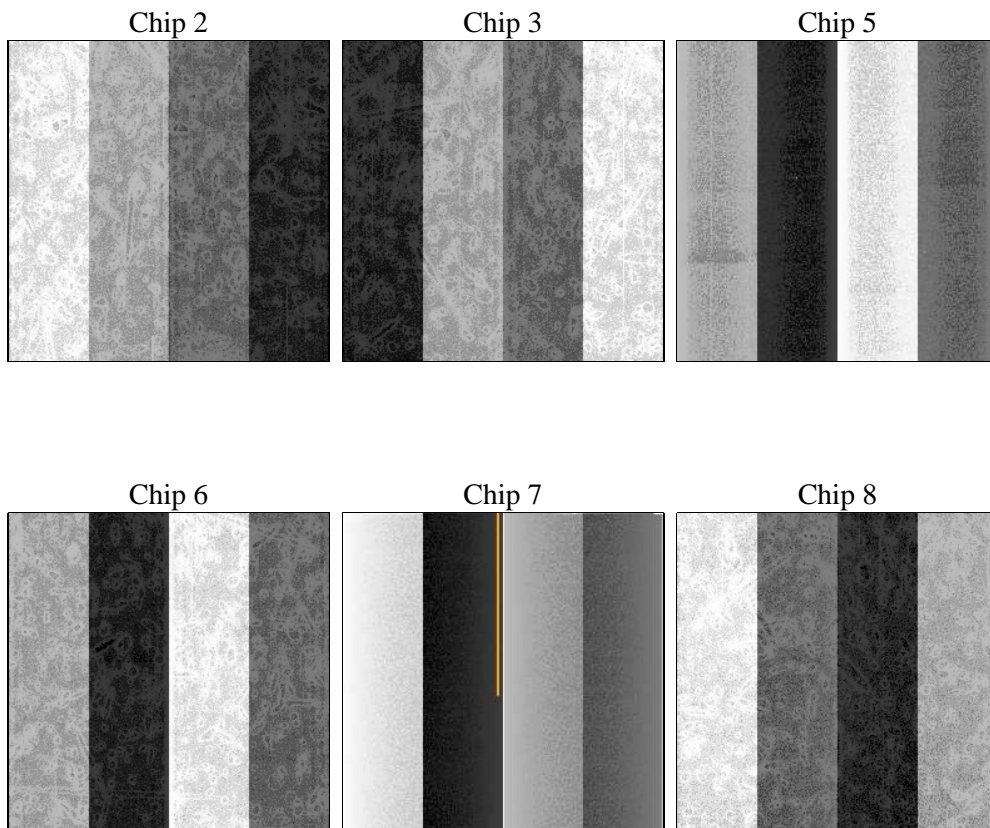
2 OBI

2.1 OBI

2.1.1 Images



2.1.2 Bias



2.1.3 Parameters

obi_num	1	Obi number	sched_exp_time	14000.000000	[s] Scheduled observation exposure time
ascdsver	8.4.5	Processing system revision	ontime	13717.53311187	Sum of GTIs [s]
caldsver	4.5.2	 	ontime2	13720.815191835	Sum of GTIs [s]
date	2012-10-17T17:53:24	Date and time of file creation	ontime3	13720.65100193	Sum of GTIs [s]
revision	5	Processing version of data	ontime5	13717.492071867	Sum of GTIs [s]
			ontime6	13723.932982296	Sum of GTIs [s]
			ontime7	13717.53311187	Sum of GTIs [s]
			ontime8	13714.127901852	Sum of GTIs [s]
			l1events	594650	Number of level 1 events

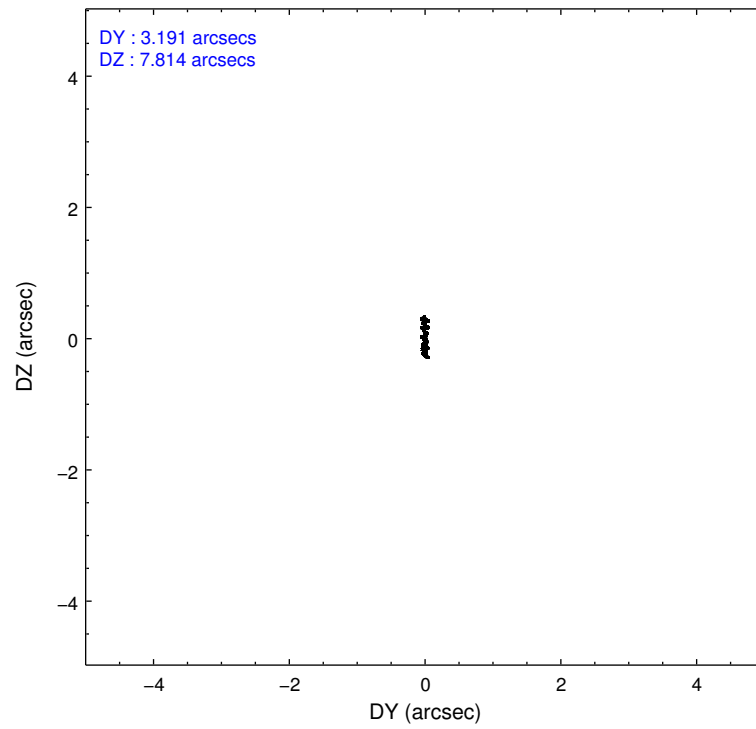
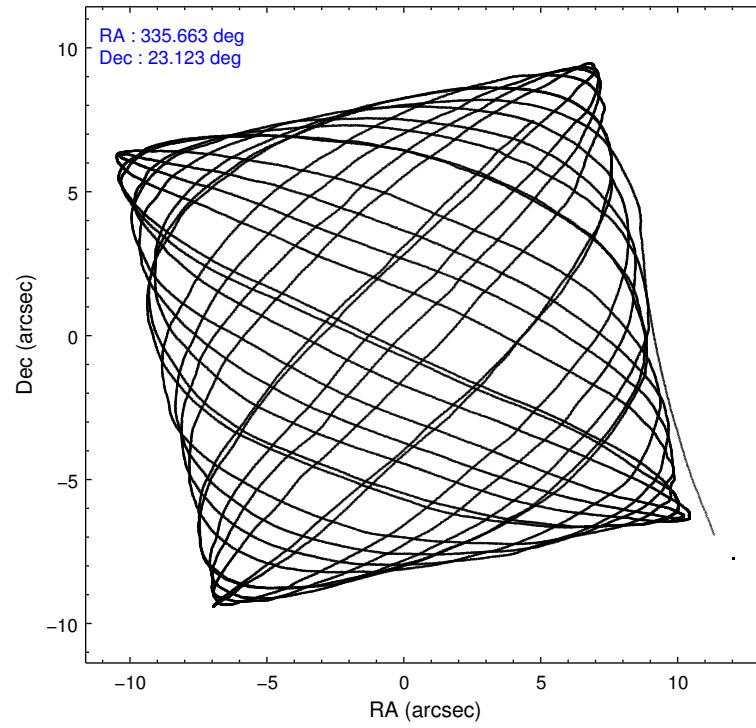
2.1.4 Events

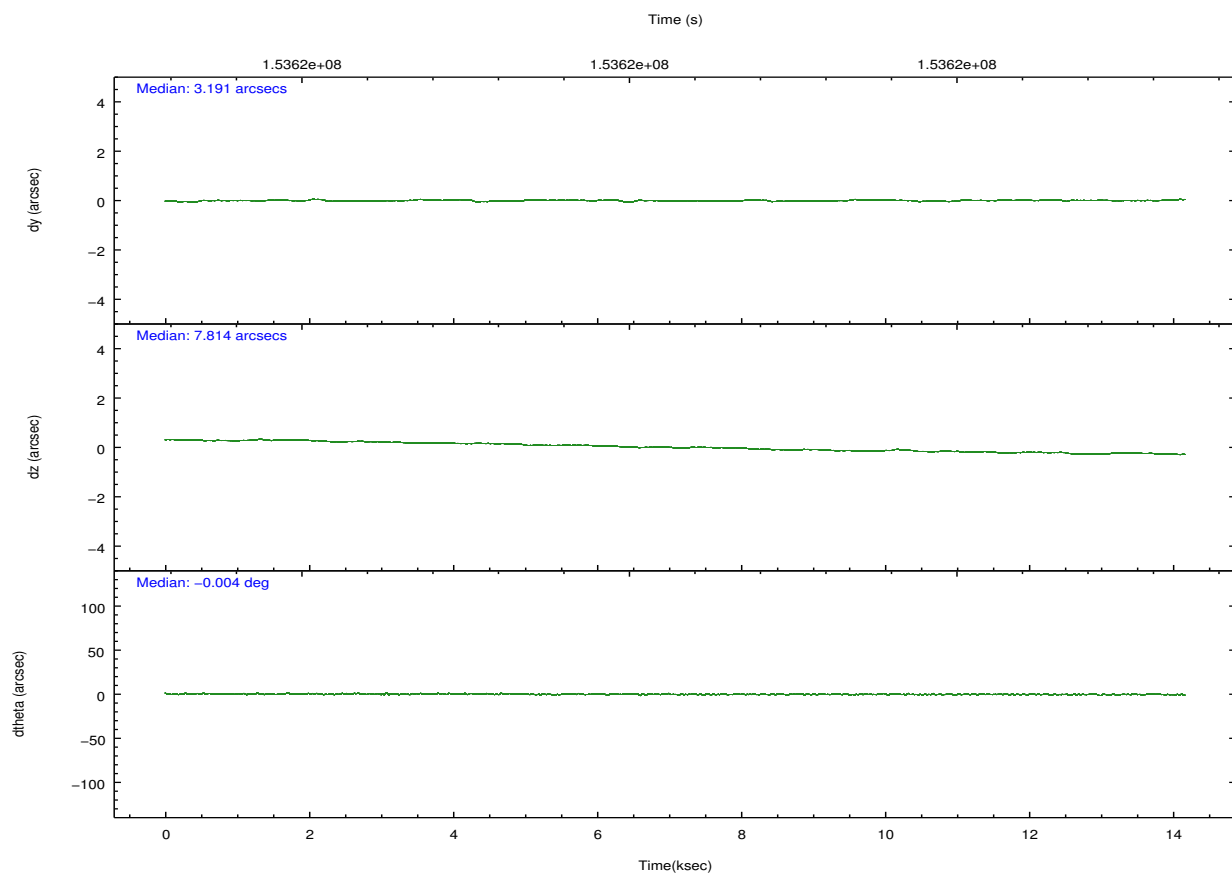
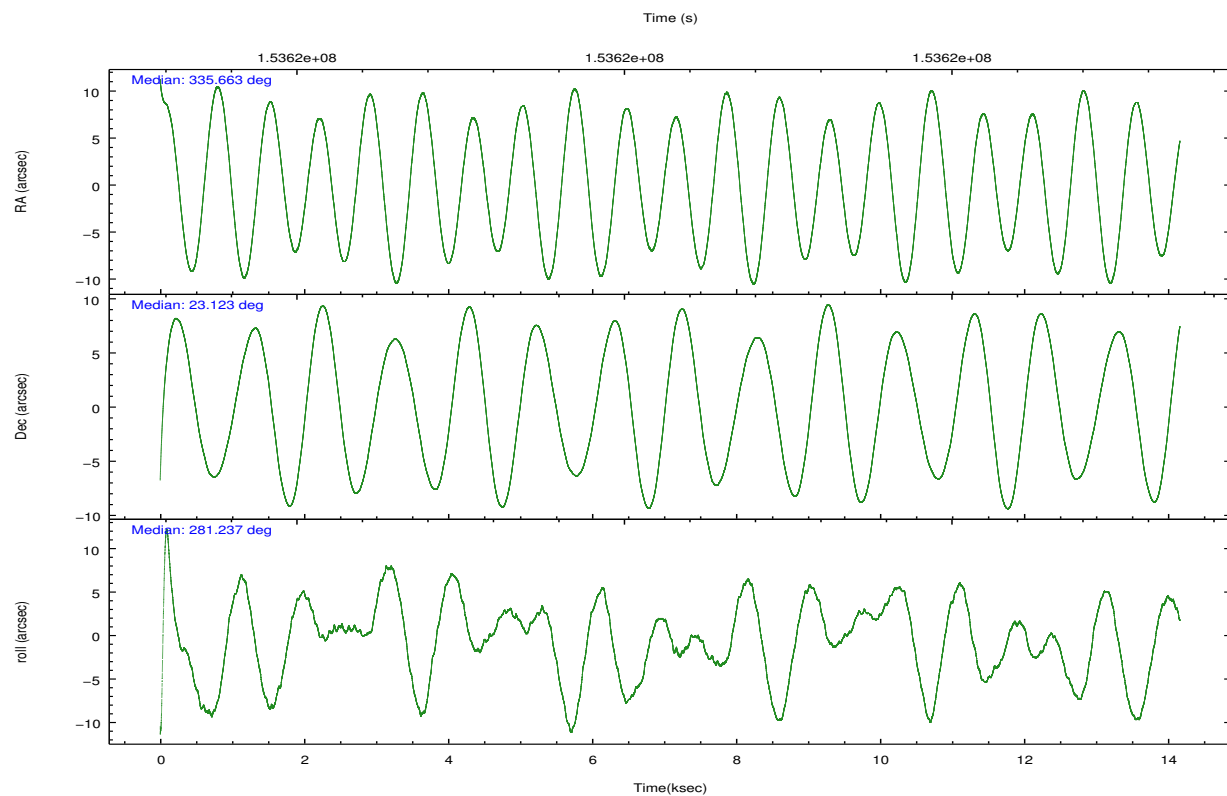
	ccd 2	ccd 3	ccd 5	ccd 6	ccd 7	ccd 8		ccd 2	ccd 3	ccd 5	ccd 6	ccd 7	ccd 8
level 1 events	87374	82338	128084	81250	108902	106702	grade 0 events	4389	4209	9789	3903	3960	6958
rejected events	77572	72823	67574	71490	64239	85168		5%	5%	7%	4%	3%	6%
rejected %	88%	88%	52%	87%	58%	79%	grade 1 events	47	53	216	43	95	79
								0%	0%	0%	0%	0%	0%
							grade 2 events	1912	1772	17339	1968	8796	4460
								2%	2%	13%	2%	8%	4%
							grade 3 events	945	896	2278	1028	3995	2380
								1%	1%	1%	1%	3%	2%
							grade 4 events	972	979	2162	938	4005	2290
								1%	1%	1%	1%	3%	2%
							grade 5 events	3118	3537	8966	3629	10358	4788
								3%	4%	7%	4%	9%	4%
							grade 6 events	1588	1666	28976	1927	23936	5451
								1%	2%	22%	2%	21%	5%
							grade 7 events	74403	69226	58358	67814	53757	80296
								85%	84%	45%	83%	49%	75%

2.2 Compared Parameters

Parameter	Planned	Actual	Parameter	Planned	Actual
Instrument	ACIS	ACIS	Obspar format version number	7	7
Detector	ACIS-235678	ACIS-235678	Obspar file type	PREDICTED	ACTUAL
Grating	NONE	NONE	Obspar update status	NONE	UPDATED
Data mode	FAINT	FAINT	Number of optional ACIS chips dropped	0	0
Observation mode	POINTING	POINTING	On-chip summing requested	N	N
[deg] Pointing RA	335.643302	335.663130442449	Subarray requested	NONE	NONE
[deg] Pointing Dec	23.142786	23.12255104677742	Alternating exposures requested	N	N
[deg] Pointing Roll	281.097334	281.2461432493752	[s] Primary exposure time	0.000000	3.2
[mm] SIM focus pos	-0.684267	-0.6828225247311905			
[mm] SIM defocus	0	0.001444936568705701			
[mm] SIM translation stage pos	-190.132523	-190.1425803651734			
[mm] SIM translation stage offset	0	0.01005778216563158			
[s] Observation start time (MET)	153613774.184000	153612975.94408			
Observation start date	2002-11-13T22:28:30	2002-11-13T22:16:15			
[s] Observation end time (MET)	153627774.184000	153628658.95723			
Observation end date	2002-11-14T02:21:50	2002-11-14T02:37:38			
Read mode	TIMED	TIMED			

2.3 Aspect



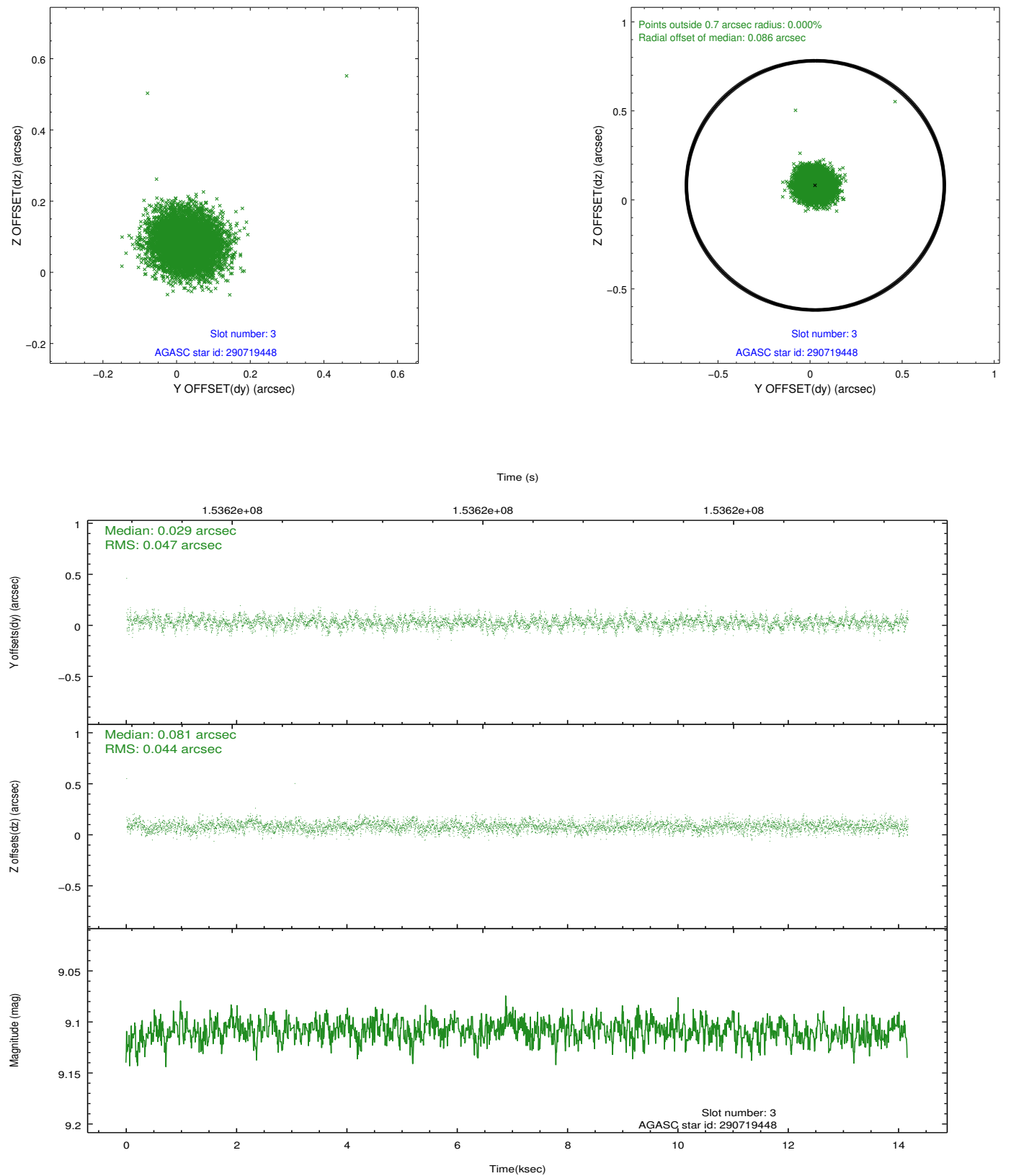


Slot Statistics

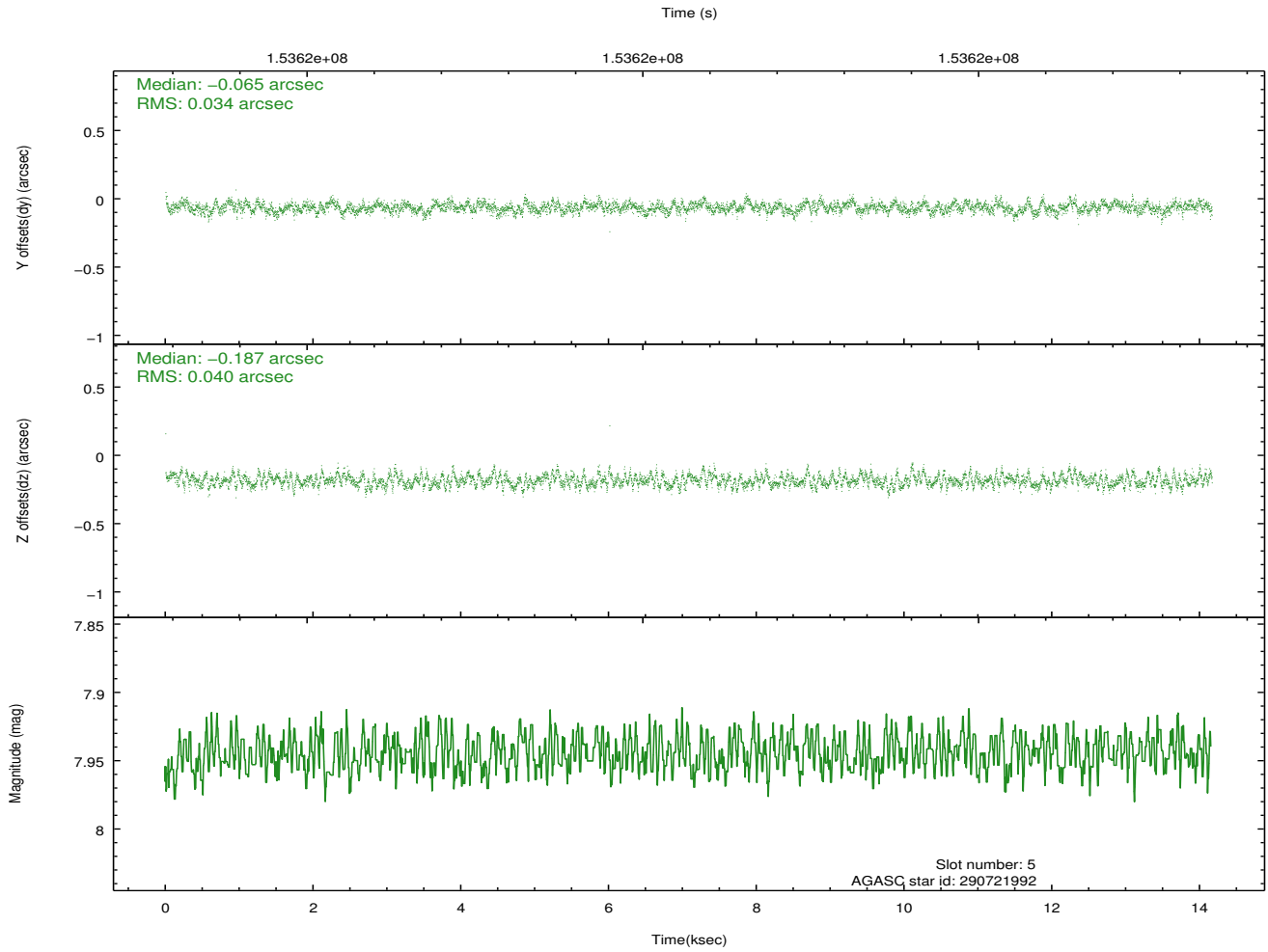
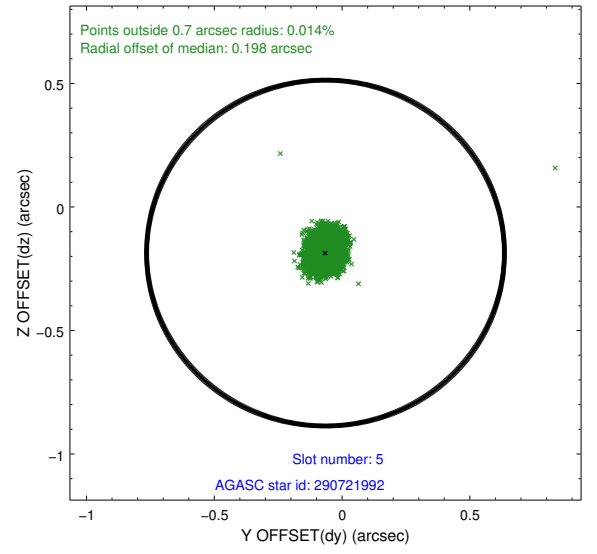
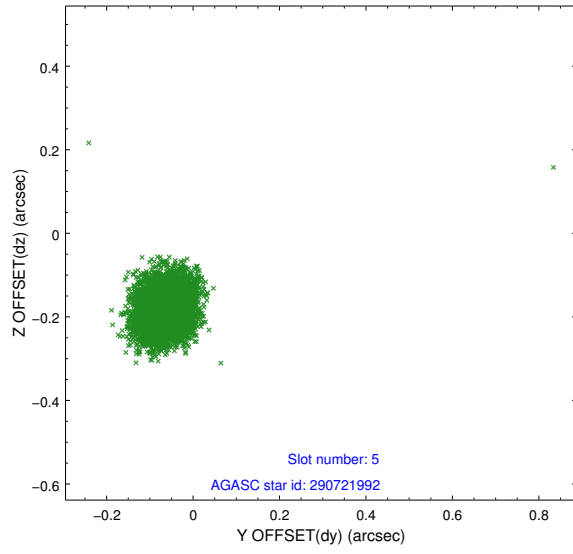
slot	status	id	mag	n_pts	med_dy	med_dz	dr1	dr2	ra	dec	mean_y	mean_z
0	FID	ACIS-S-2	7.11	3452	-0.011	-0.010	0.007	0.012	0.000000	0.000000	-755.86	-1728.97
1	FID	ACIS-S-4	7.20	3450	0.007	0.008	0.005	0.010	0.000000	0.000000	2157.30	179.18
2	FID	ACIS-S-5	7.24	3450	-0.027	0.011	0.007	0.012	0.000000	0.000000	-1808.28	173.25
3	GUIDE	290719448	9.11	6903	0.029	0.081	0.068	0.110	336.372154	22.824814	1582.92	2153.85
4	OMITTED		0.00	0	0.000	0.000	0.000	0.000	0.000000	0.000000	0.00	0.00
5	GUIDE	290721992	7.95	6907	-0.065	-0.187	0.054	0.089	335.178568	23.060909	-8.69	-1567.29
6	GUIDE	290731928	9.49	6883	0.126	0.087	0.088	0.140	336.296969	22.861667	1405.91	1933.60
7	GUIDE	290724624	9.03	6906	-0.092	0.016	0.076	0.123	336.156885	23.628362	-1392.24	1998.82

2.4 Star Slots

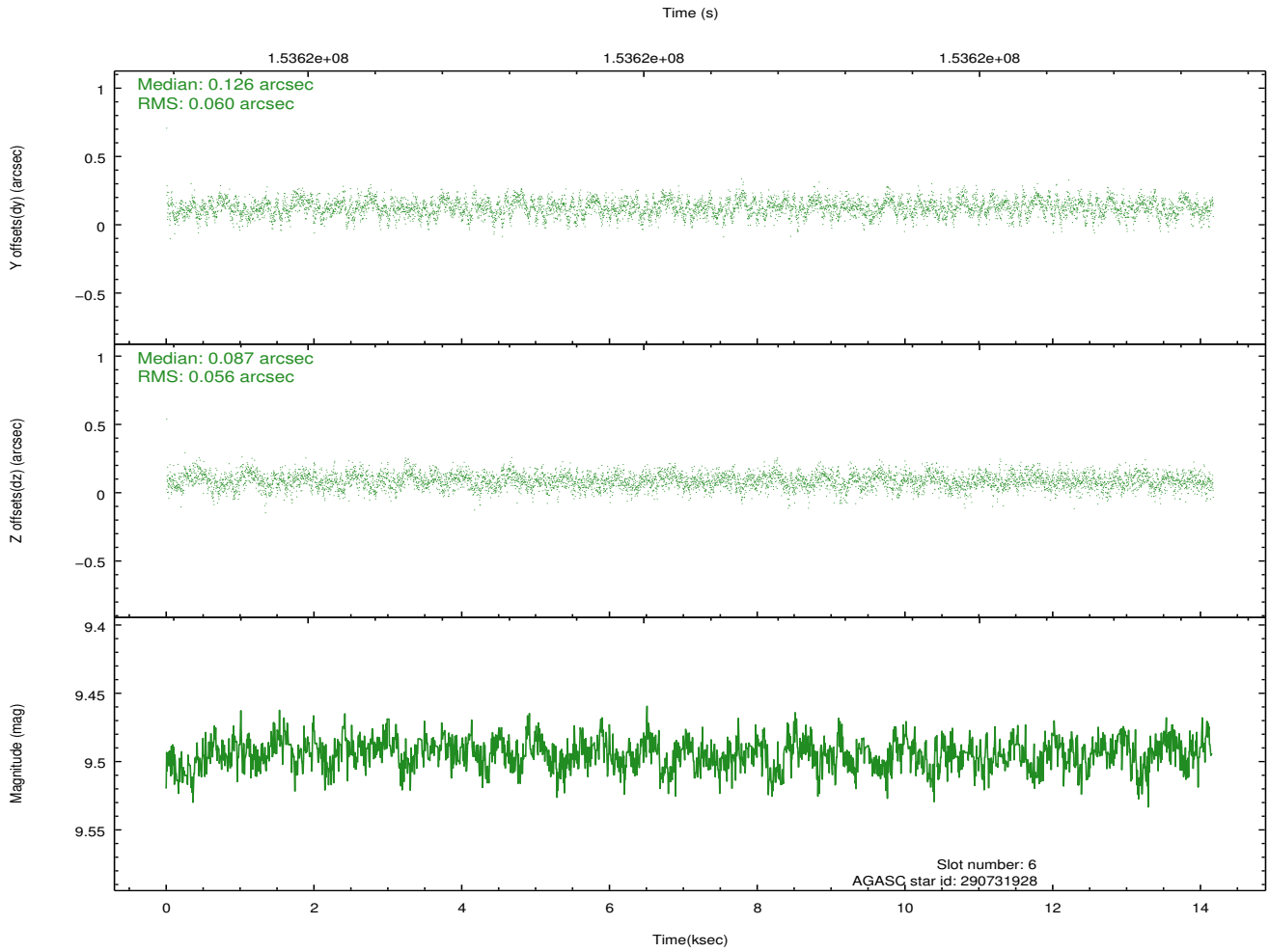
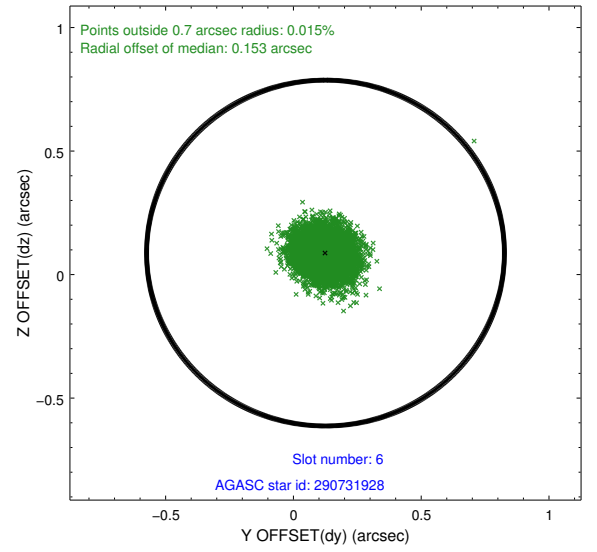
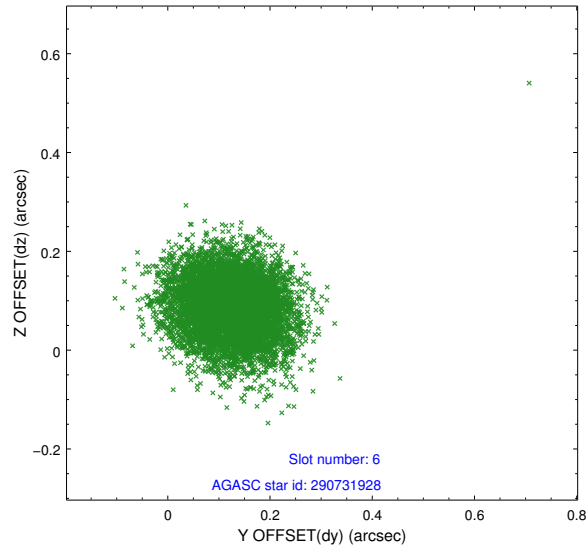
2.4.1 Slot 3



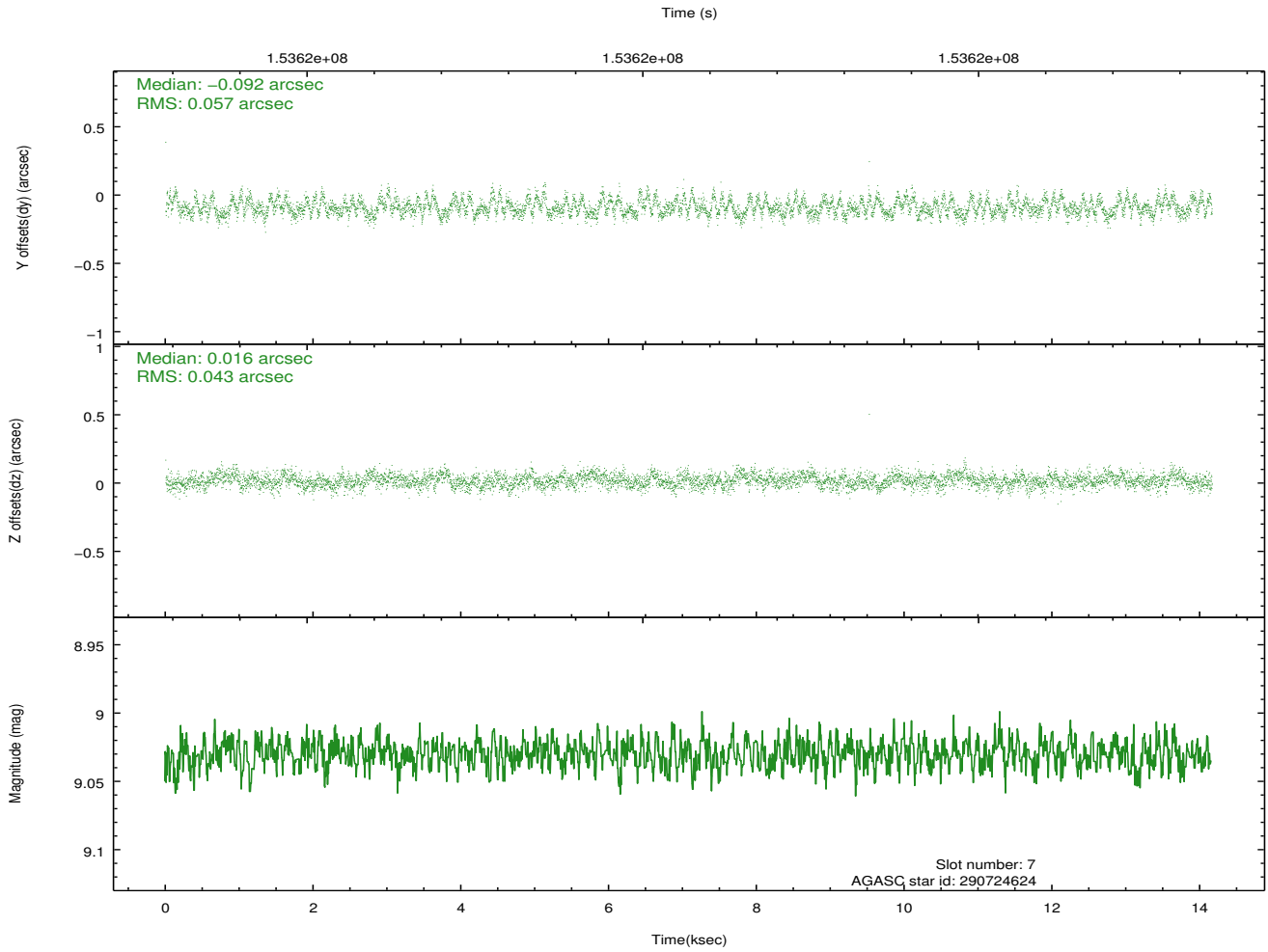
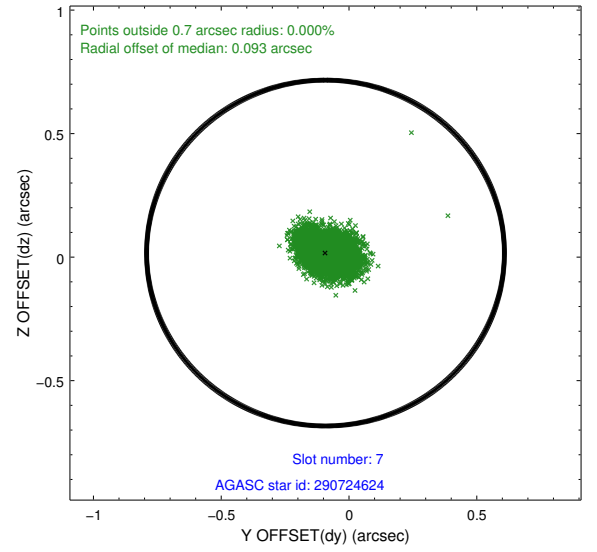
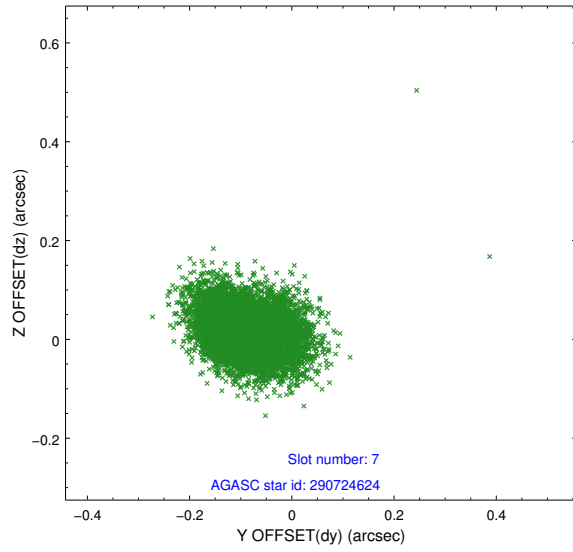
2.4.2 Slot 5



2.4.3 Slot 6

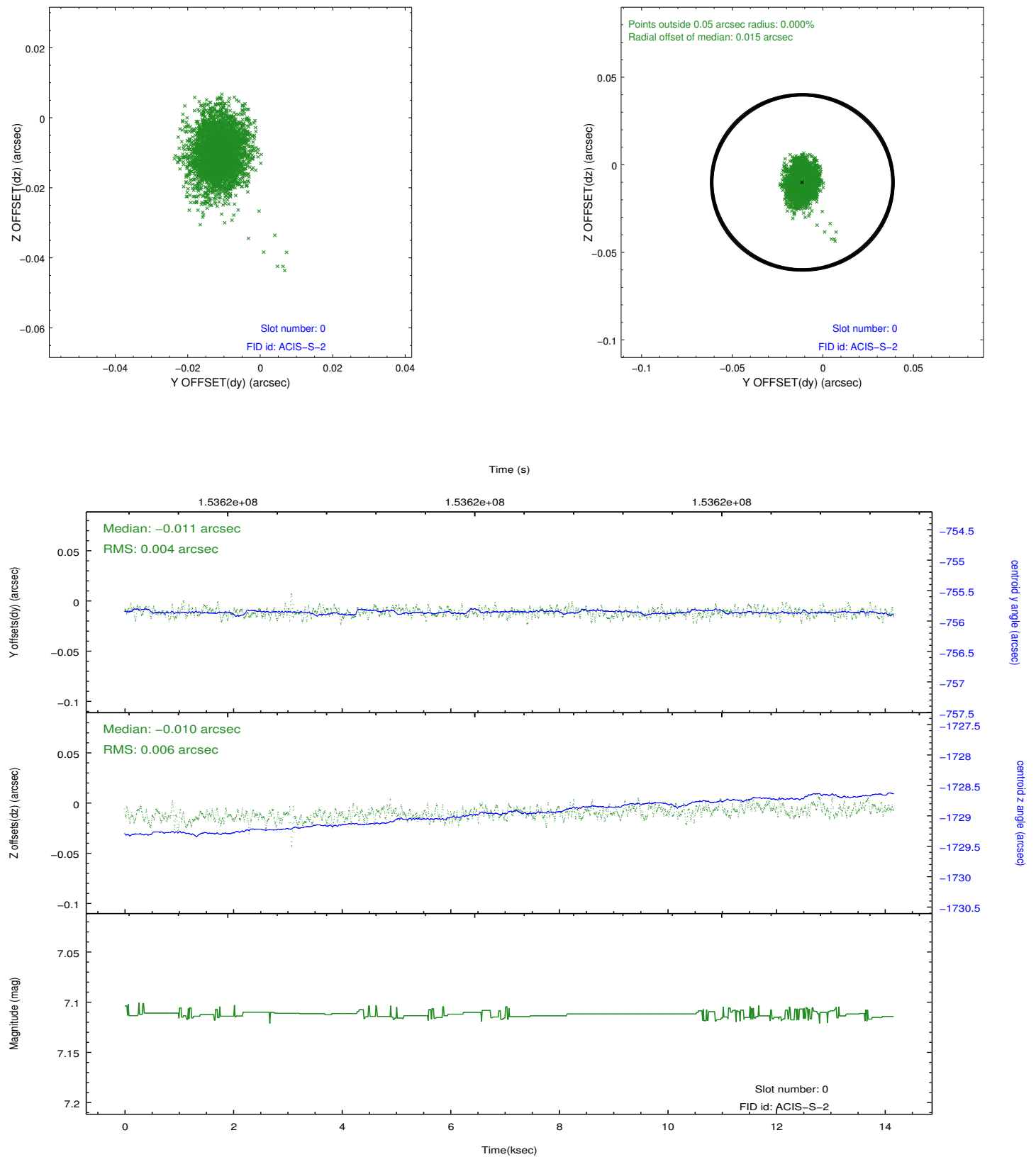


2.4.4 Slot 7

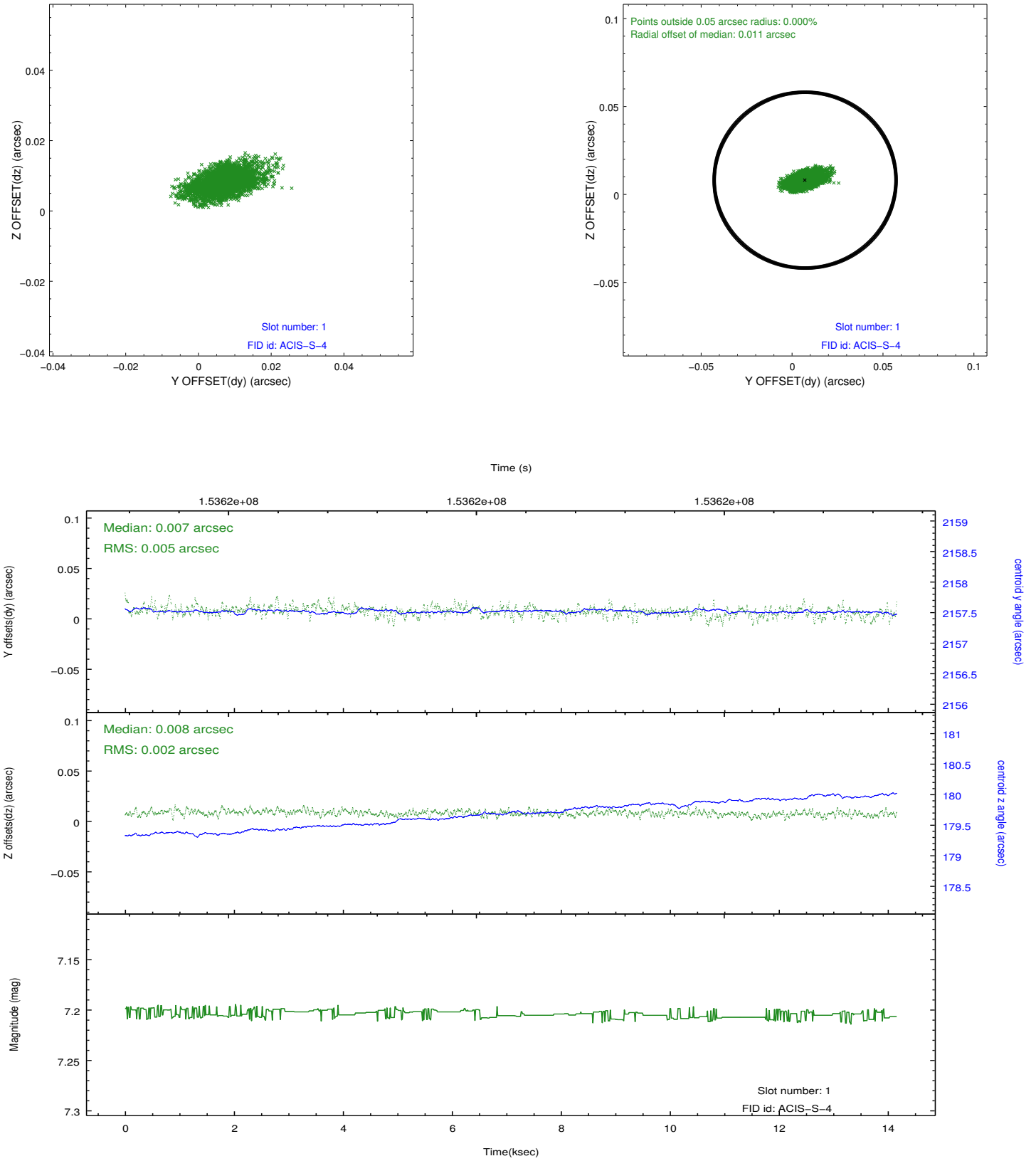


2.5 FID Slots

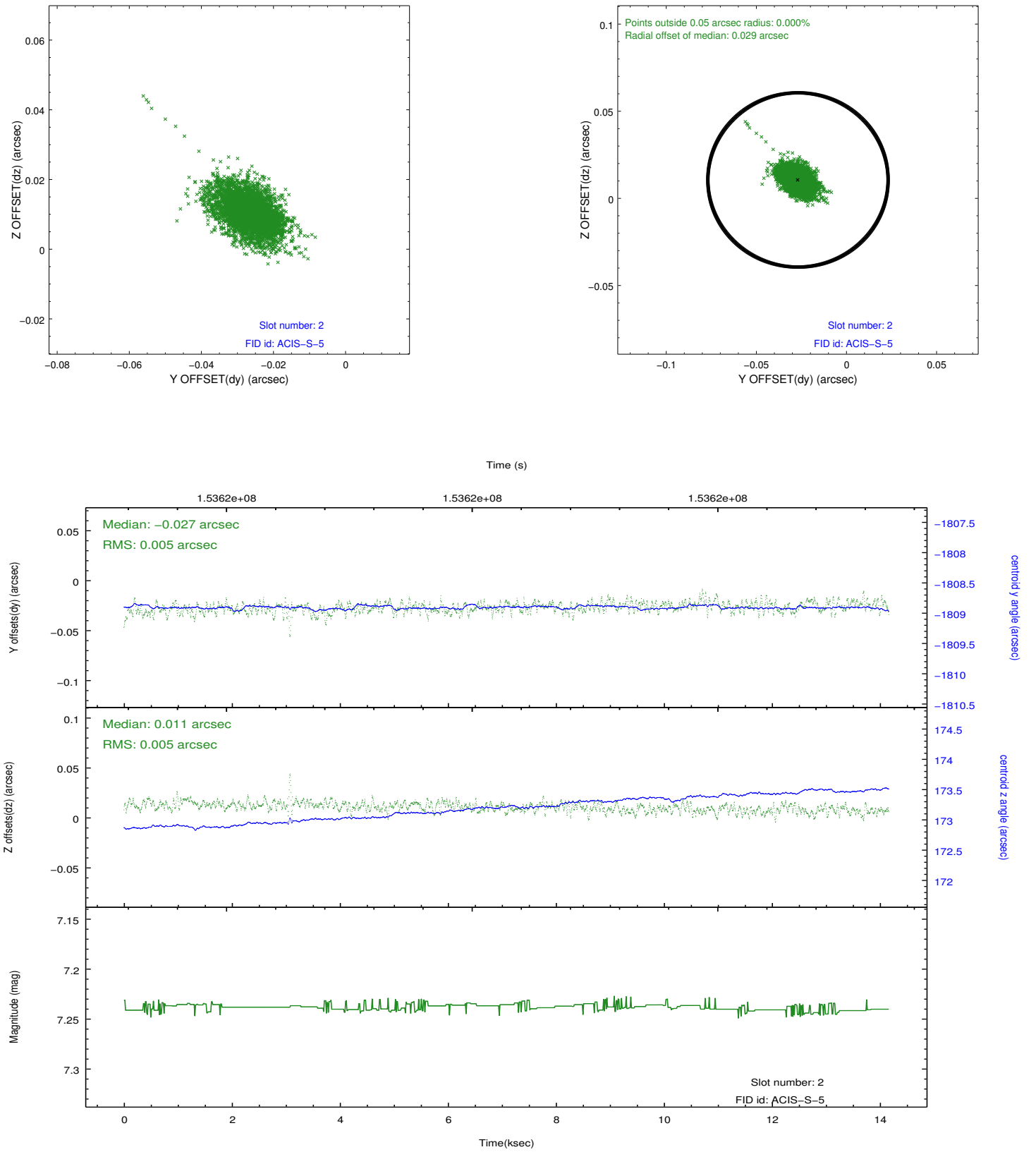
2.5.1 Slot 0



2.5.2 Slot 1



2.5.3 Slot 2



A Summary

A.1 Status

V&V Scientist	Jen Lauer
V&V Date (YYYY-MM-DD)	2012.10.26
V&V Edition	1
V&V Disposition and Status	OK
V&V Charge Time	13.711

A.2 Comments

The guide star in slot 4 was removed from the aspect solution due to poor data quality. The aspect solution is improved by the removal of this guide star from the solution.