

V&V Reference Report

L2 ASCDS Version : 7.6.8.1

Observation 2993 - L2 Version 001
Chandra X-Ray Center

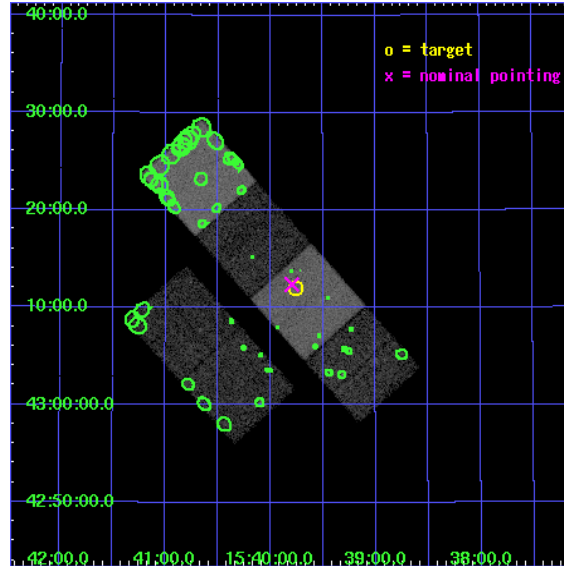
L2 Processing Date : Aug 25 2006

Contents

1	Front	2
2	OBI	3
2.1	OBI	3
2.1.1	Images	3
2.1.2	Bias	3
2.1.3	Parameters	4
2.1.4	Events	4
2.2	Compared Parameters	5
2.3	Aspect	6
2.4	Star Slots	9
2.4.1	Slot 3	9
2.4.2	Slot 4	10
2.4.3	Slot 5	11
2.4.4	Slot 6	12
2.4.5	Slot 7	13
2.5	FID Slots	14
2.5.1	Slot 0	14
2.5.2	Slot 1	15
2.5.3	Slot 2	16
3	Point Sources	17
A	Summary	18
A.1	Status	18
A.2	Comments	18

1 Front

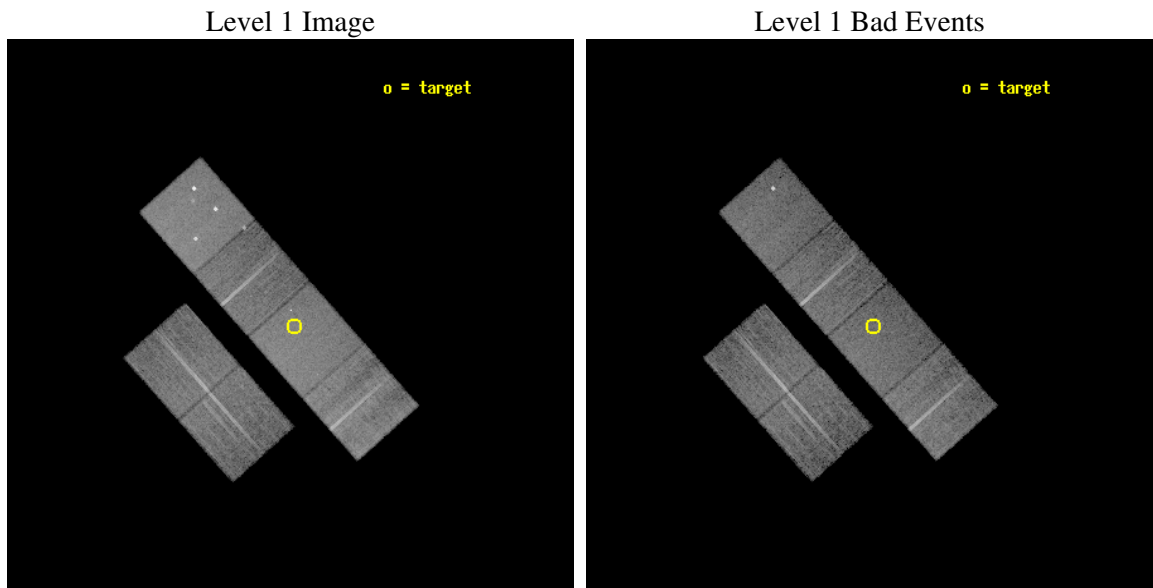
seq_num	700432
obs_id	2993
title	CHANDRA OBSERVATIONS OF A POPULATION OF TYPE 2 QUASARS DISCOVERED IN THE DPOSS
observer	PROF. S. DJORGOVSKI
object	PSS 1539+4312
dtcycle	0
cycle	P
ra_targ	234.938333
dec_targ	43.200556
ra_nom	234.94885572451
dec_nom	43.206578710095
roll_nom	48.302299619269
revision	2
ontime	14960.000013933
livetime	14770.567485926
ontime2	14960.000013933
ontime3	14960.000013933
ontime5	14960.000013933
ontime6	14960.000013933
ontime7	14960.000013933
ontime8	14960.000013933
l2events	139813



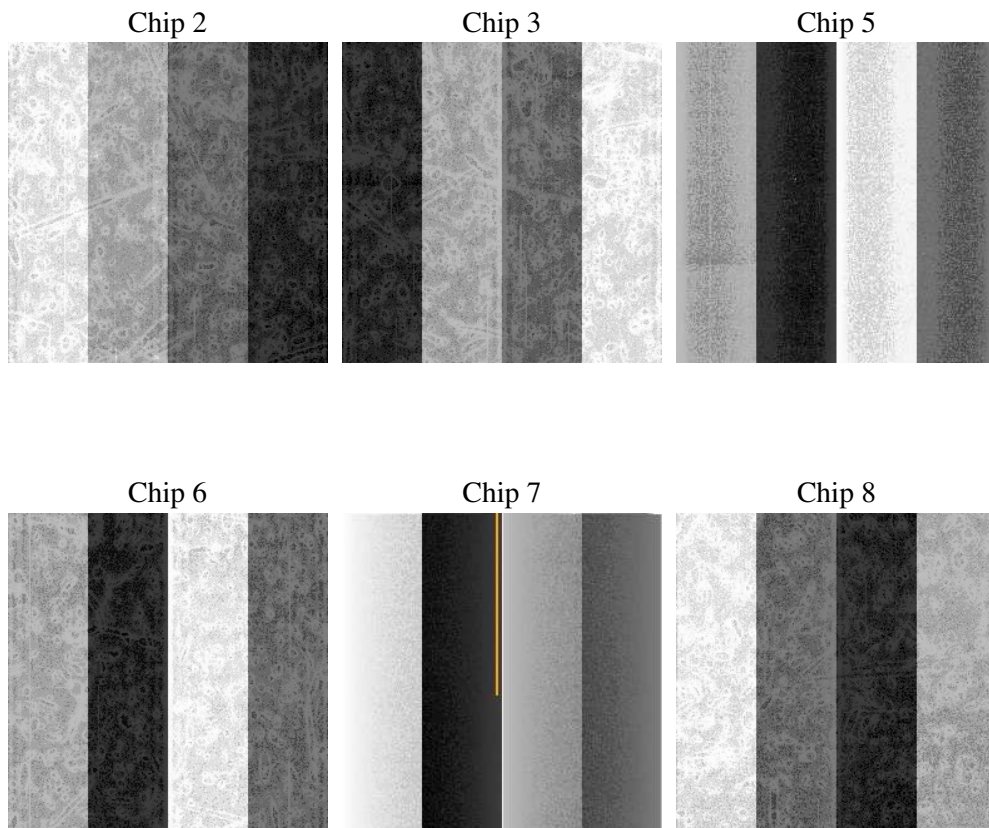
2 OBI

2.1 OBI

2.1.1 Images



2.1.2 Bias



2.1.3 Parameters

obi_num	1
ascdsver	7.6.8.1
caldbver	3.2.3
date	2006-08-25T22:10:05
revision	2

sched_exp_time	15000.000000
ontime	14966.932511866
ontime2	14966.932511866
ontime3	14966.932511866
ontime5	14966.932511866
ontime6	14966.932511866
ontime7	14966.932511866
ontime8	14966.932511866
l1events	664791

2.1.4 Events

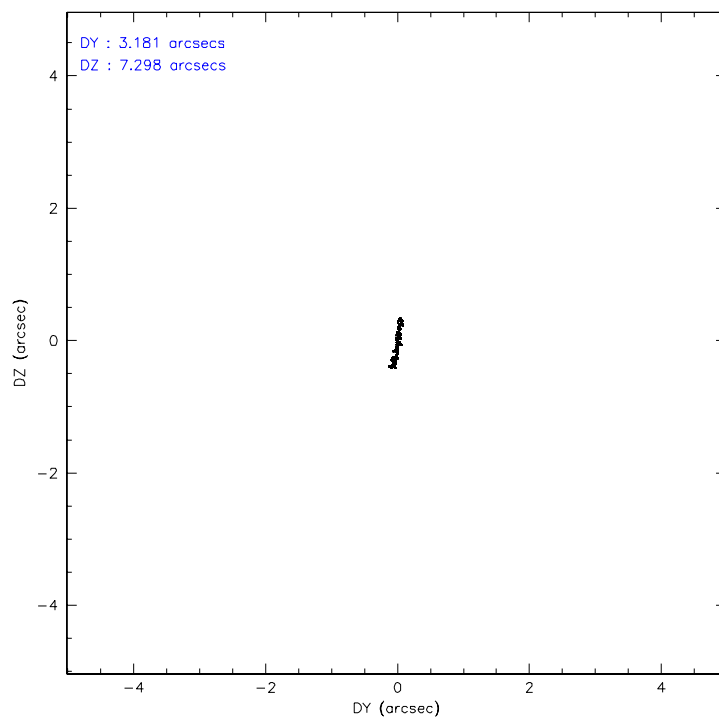
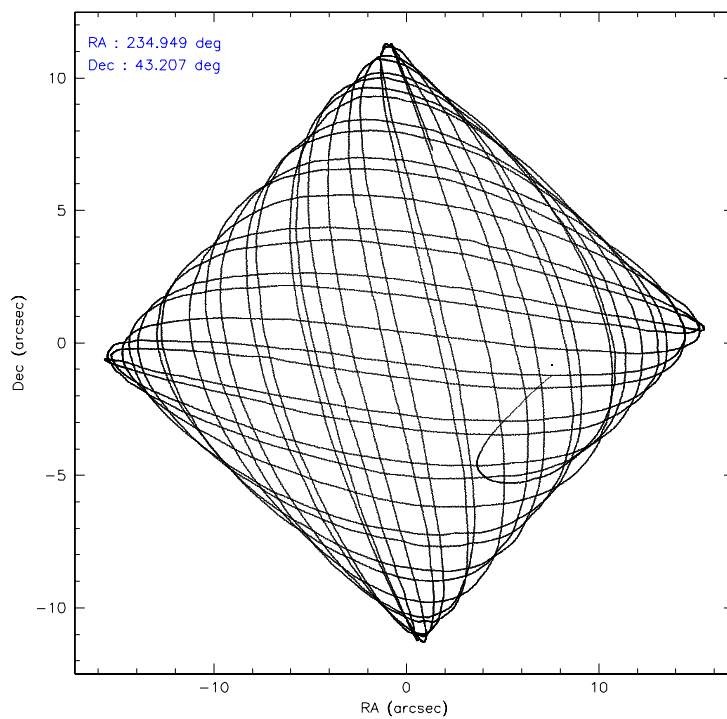
	ccd 2	ccd 3	ccd 5	ccd 6	ccd 7	ccd 8
level 1 events	96247	90537	138710	92675	120854	125768
rejected events	84776	79615	75486	81313	73946	93233
rejected %	88%	87%	54%	87%	61%	74%

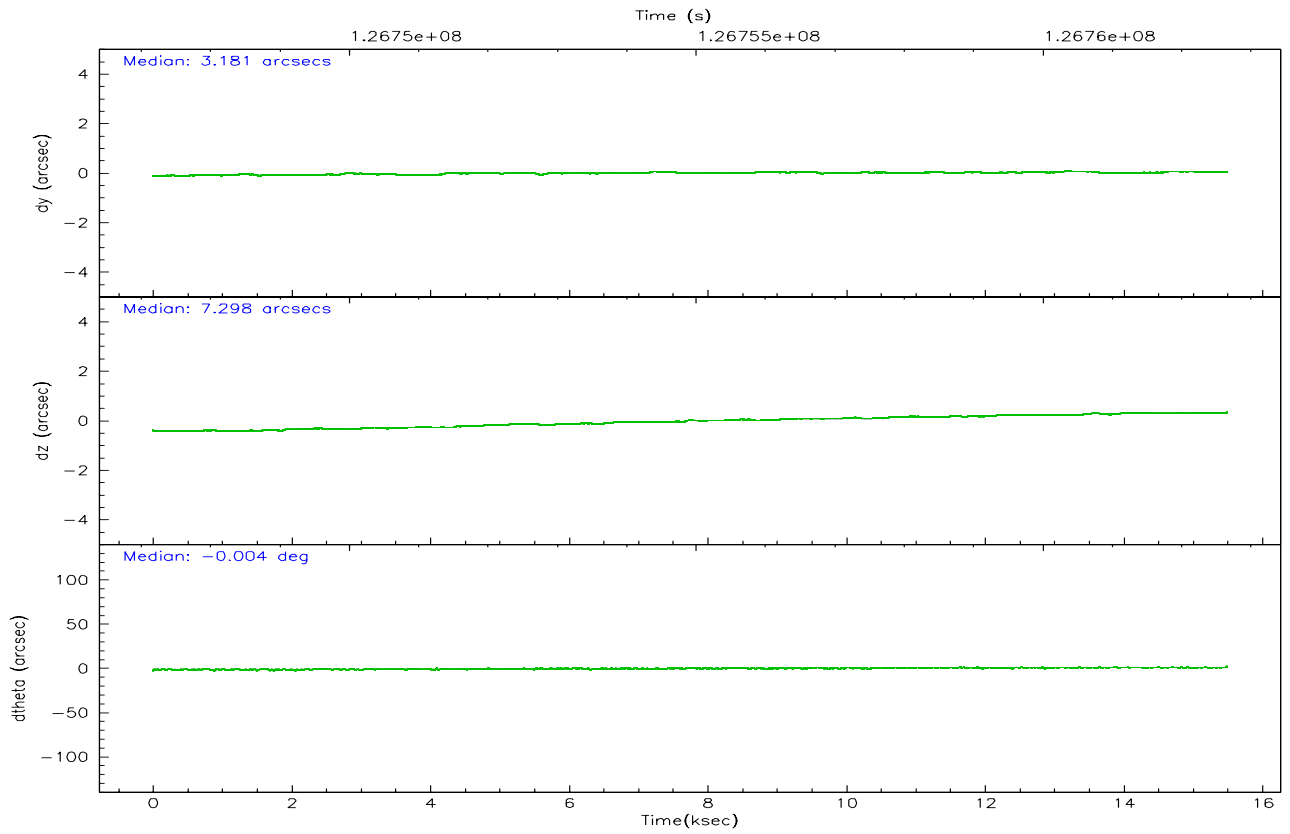
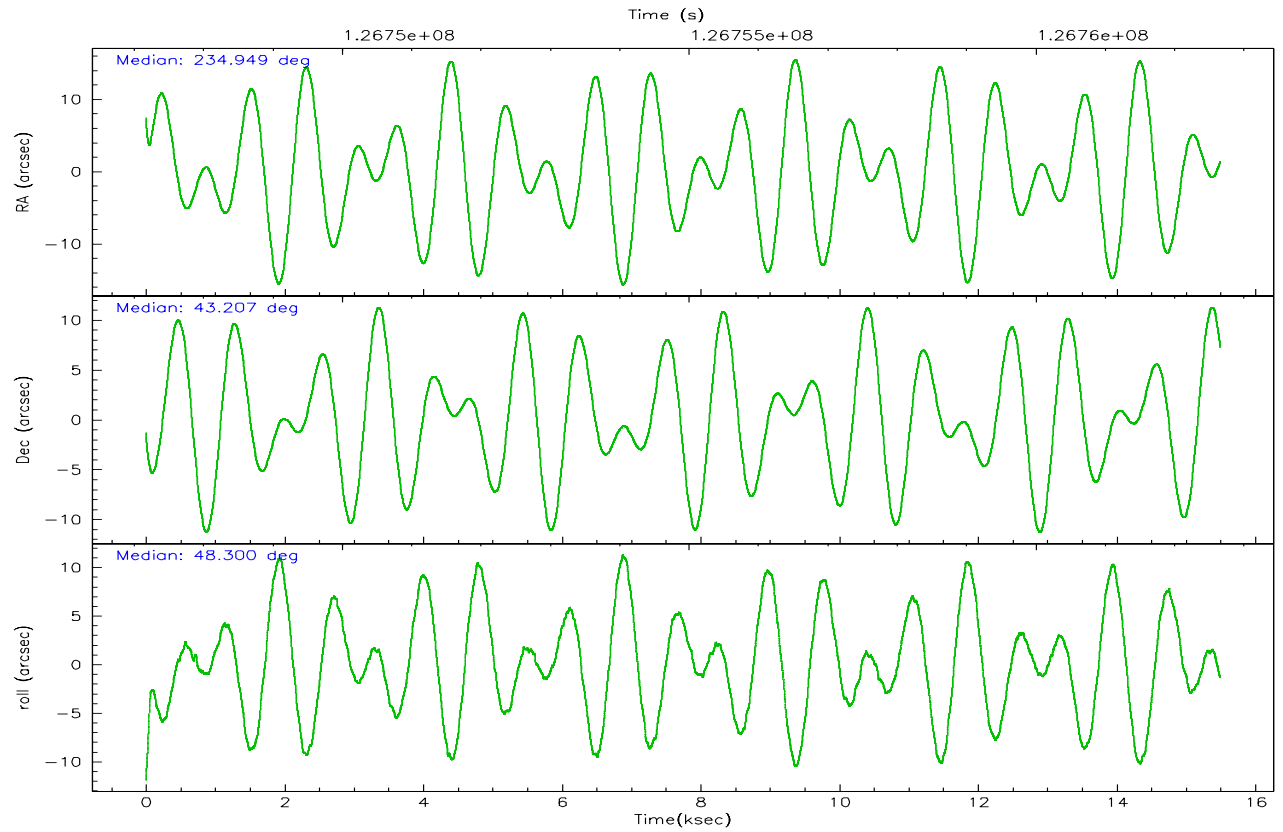
	ccd 2	ccd 3	ccd 5	ccd 6	ccd 7	ccd 8
grade 0 events	4847	4595	9122	4476	3169	10298
	5%	5%	6%	4%	2%	8%
grade 1 events	38	44	127	41	81	85
	0%	0%	0%	0%	0%	0%
grade 2 events	2620	2331	18870	2439	11529	6061
	2%	2%	13%	2%	9%	4%
grade 3 events	983	968	1336	1086	2618	4490
	1%	1%	0%	1%	2%	3%
grade 4 events	983	977	1275	1072	2555	4039
	1%	1%	0%	1%	2%	3%
grade 5 events	3306	3526	6414	3846	8191	5150
	3%	3%	4%	4%	6%	4%
grade 6 events	2041	2056	32638	2292	27065	7653
	2%	2%	23%	2%	22%	6%
grade 7 events	81429	76040	68928	77423	65646	87992
	84%	83%	49%	83%	54%	69%

2.2 Compared Parameters

Parameter	Planned	Actual	Parameter	Planned	Actual
Instrument	ACIS	ACIS	Obspar format version number	6	6
Detector	ACIS-235678	ACIS-235678	Obspar file type	PREDICTED	ACTUAL
Grating	NONE	NONE	Obspar update status	NONE	UPDATED
Data mode	FAINT	FAINT	On-chip summing requested	N	N
Observation mode	POINTING	POINTING	Subarray requested	NONE	NONE
Pointing RA	234.941681	234.948855724512	Alternating exposures requested	N	N
Pointing Dec	43.179807	43.20657871009499	Primary exposure time	0.000000	3.2
Pointing Roll	48.150590	48.30229961926929			
SIM focus pos (mm)	-0.684267	-0.6828225247311905			
SIM defocus (mm)	0	0.001444936568705701			
SIM translation stage pos (mm)	-190.132523	-190.1425803651734			
SIM translation stage offset (mm)	0	0.01005778216563158			
Observation start time	126747654.184000	126746525.08258			
Observation start date	2002-01-06T23:39:50	2002-01-06T23:22:05			
Observation end time	126762654.184000	126763011.69574			
Observation end date	2002-01-07T03:49:50	2002-01-07T03:56:51			
Read mode	TIMED	TIMED			

2.3 Aspect



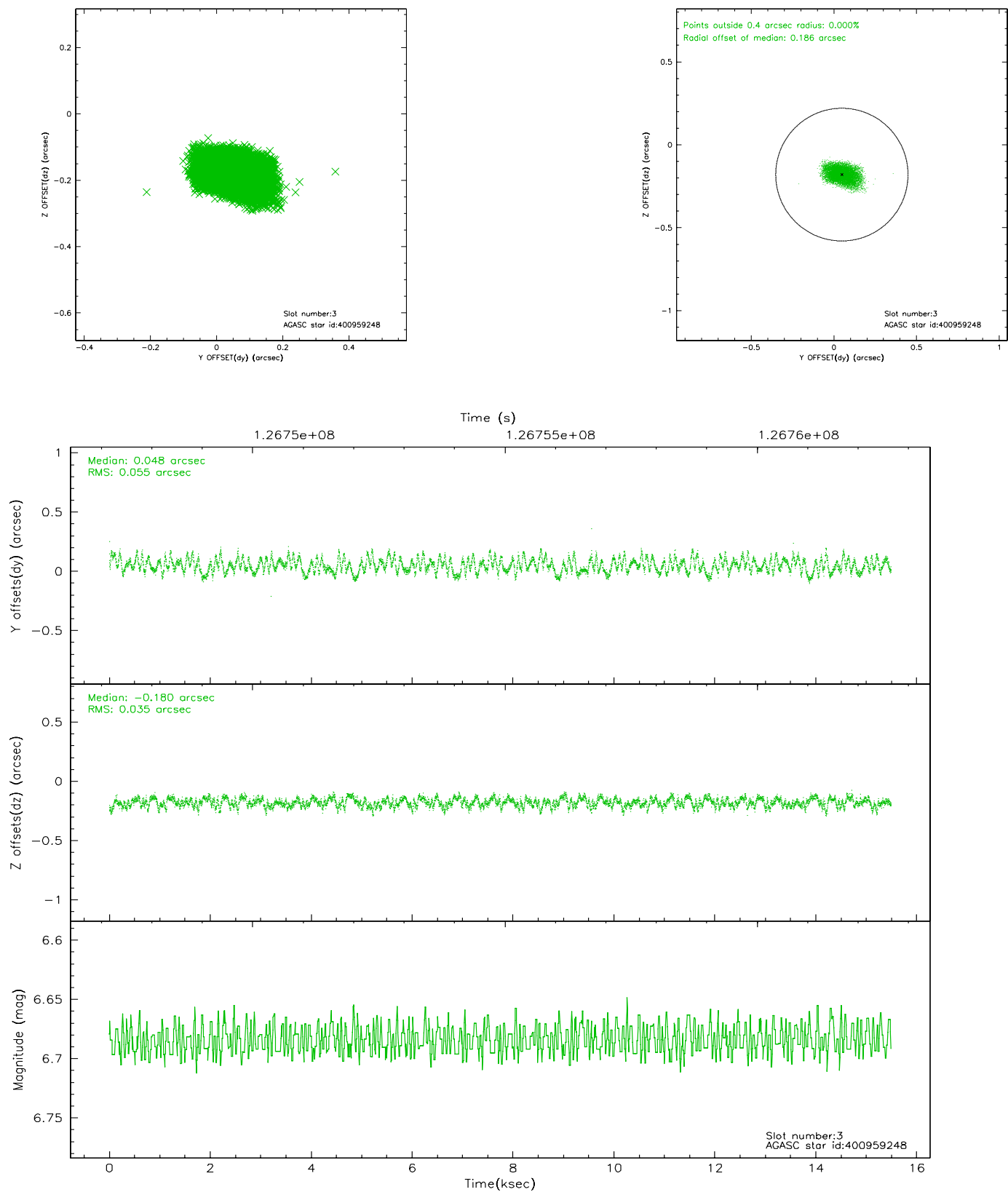


Slot Statistics

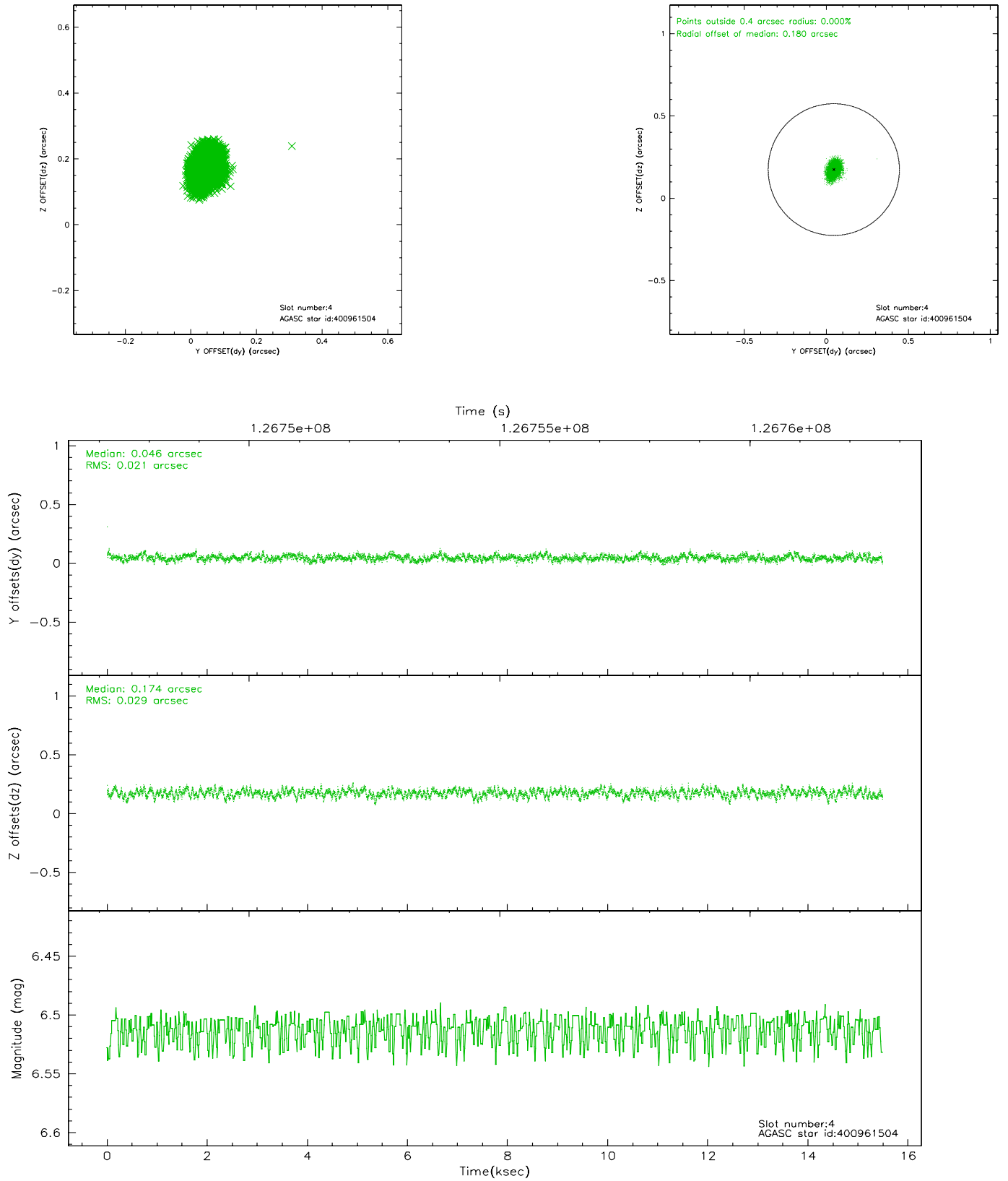
slot	status	id	mag	n_pts	med_dy	med_dz	dr1	dr2	ra	dec	mean_y	mean_z
0	FID	ACIS-S-2	7.11	3779	0.002	0.026	0.008	0.013	0.000000	0.000000	-755.82	-1728.36
1	FID	ACIS-S-4	7.20	3778	-0.069	-0.008	0.005	0.009	0.000000	0.000000	2157.26	179.79
2	FID	ACIS-S-5	7.24	3778	0.036	-0.009	0.008	0.014	0.000000	0.000000	-1808.26	173.79
3	GUIDE	400959248	6.68	7556	0.048	-0.180	0.069	0.114	233.791705	43.167539	-2032.17	2233.38
4	GUIDE	400961504	6.51	7558	0.046	0.174	0.038	0.063	234.883565	42.696946	-1397.72	-1044.80
5	GUIDE	400960104	7.42	7557	-0.151	-0.032	0.048	0.084	235.089267	43.846377	2042.99	1315.82
6	GUIDE	400961080	8.64	7555	0.079	0.125	0.070	0.111	234.853817	42.624698	-1643.58	-1159.67
7	GUIDE	400954856	8.73	7557	-0.020	-0.086	0.074	0.125	234.763312	43.866513	1532.48	1994.56

2.4 Star Slots

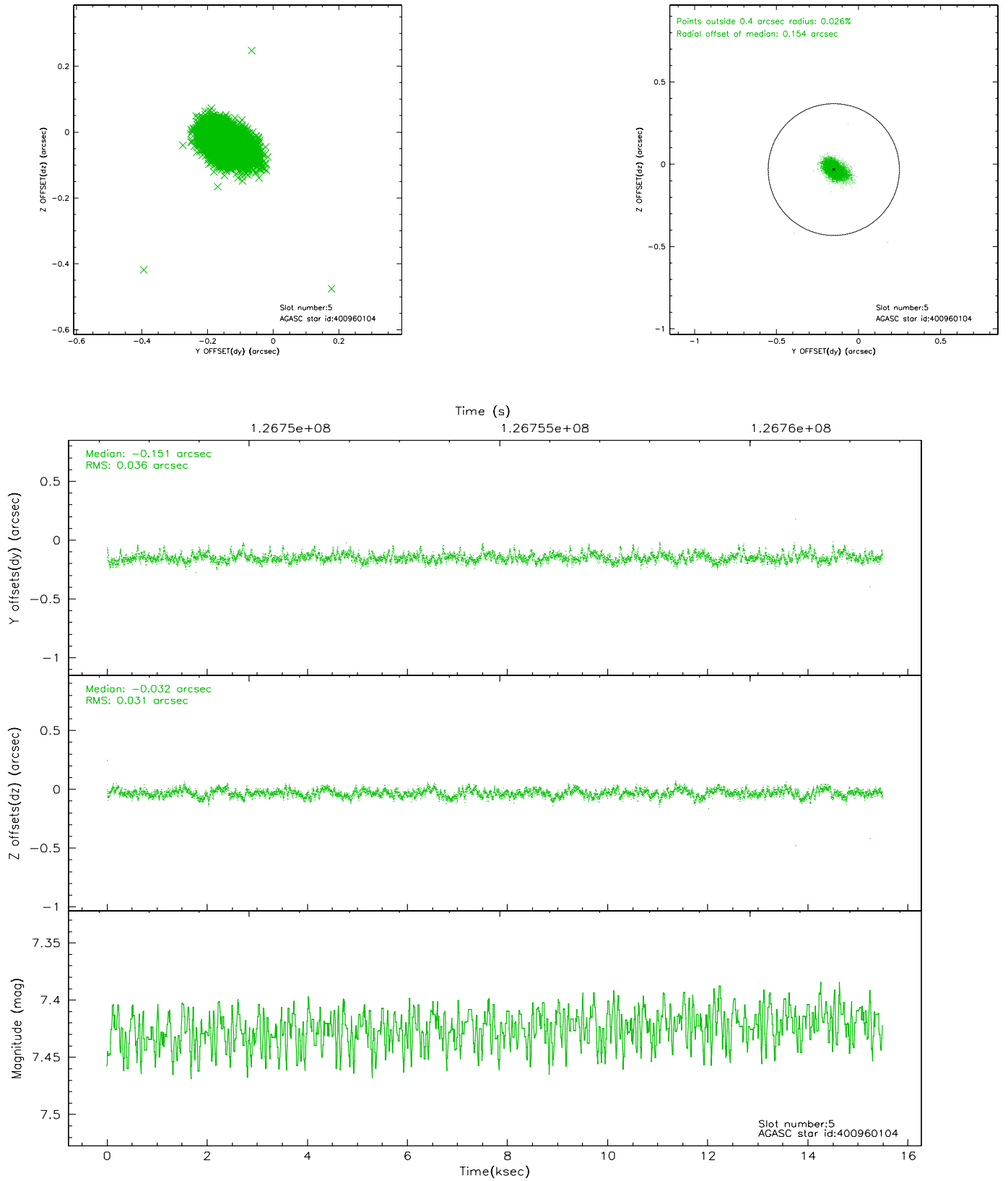
2.4.1 Slot 3



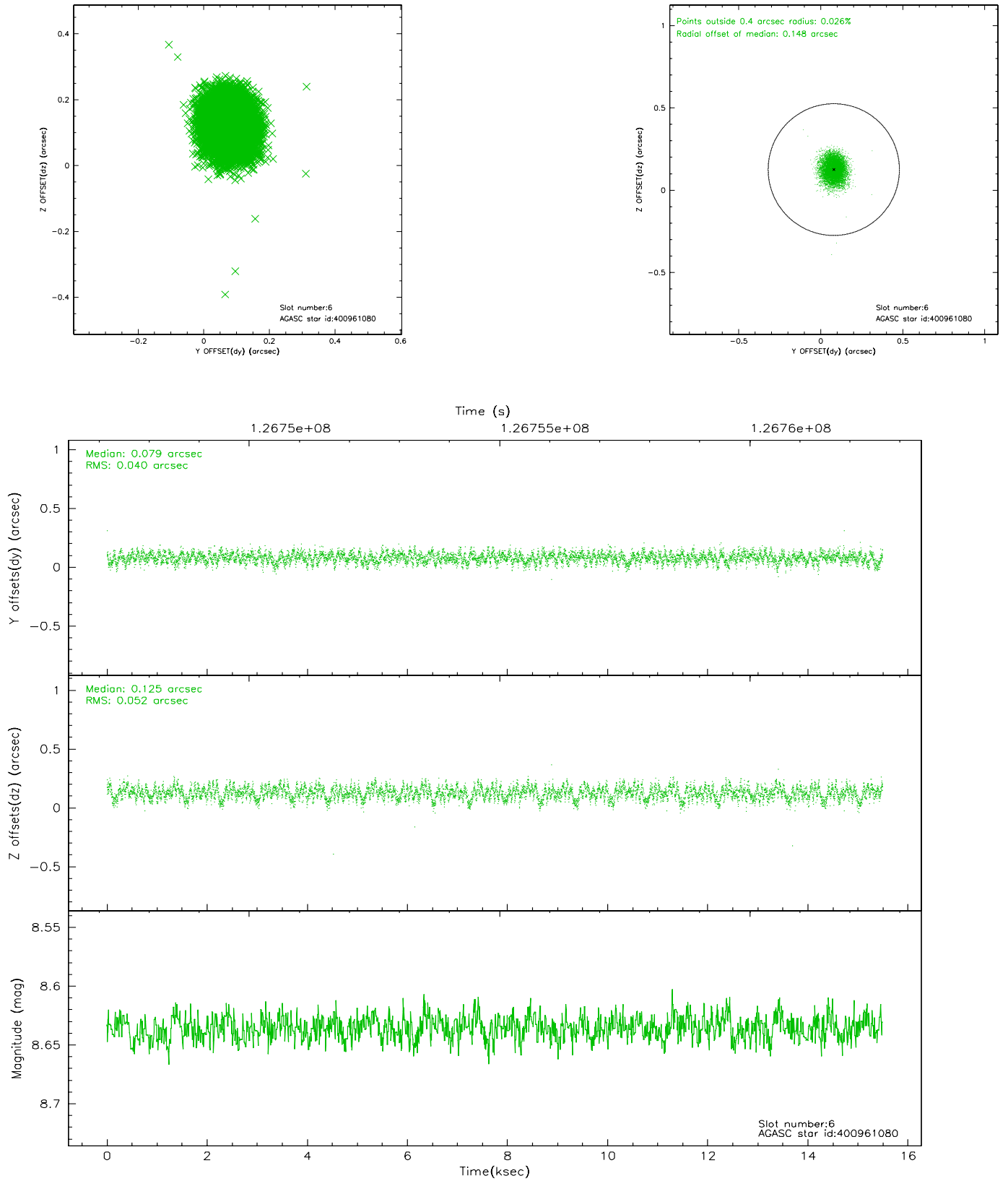
2.4.2 Slot 4



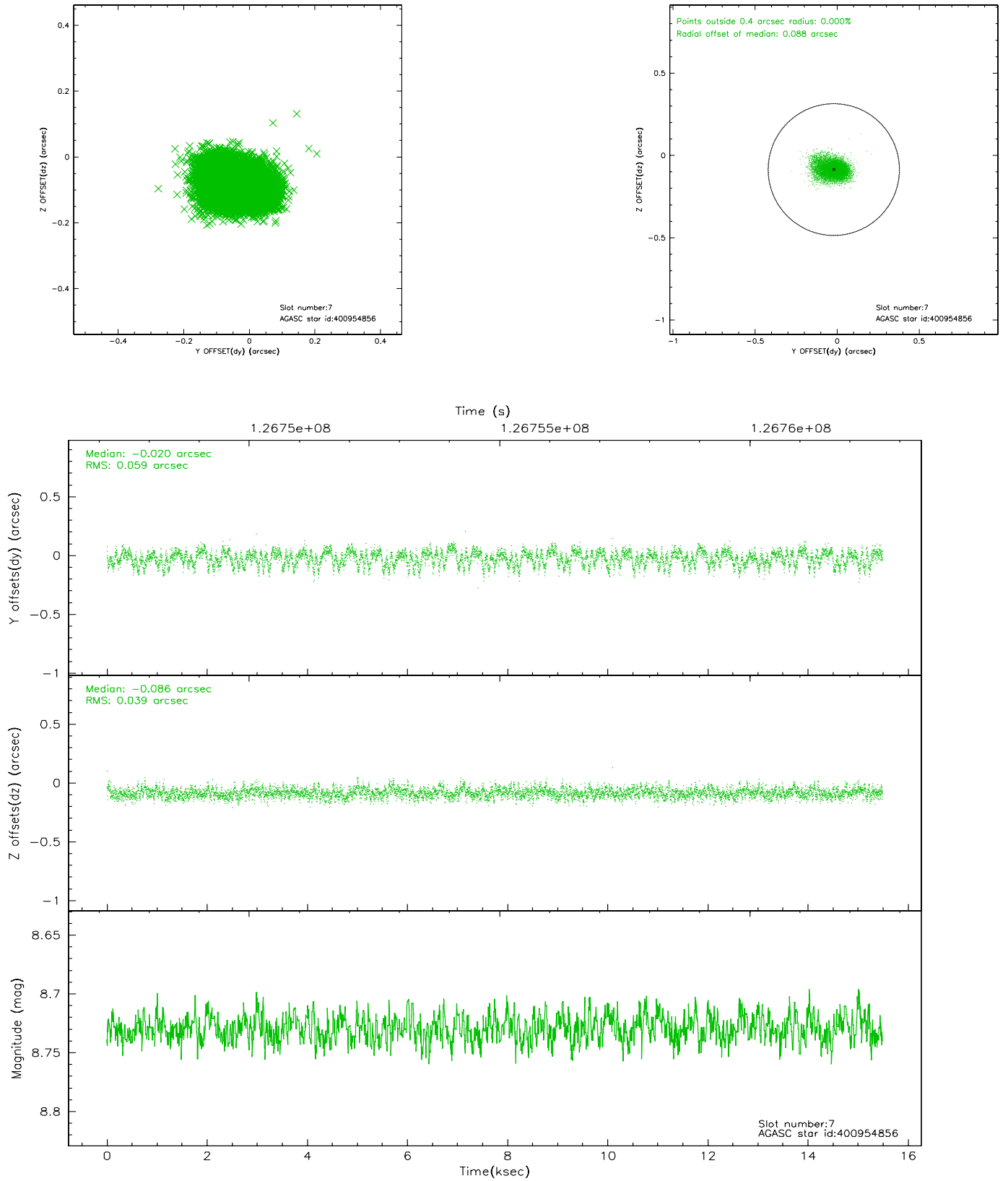
2.4.3 Slot 5



2.4.4 Slot 6

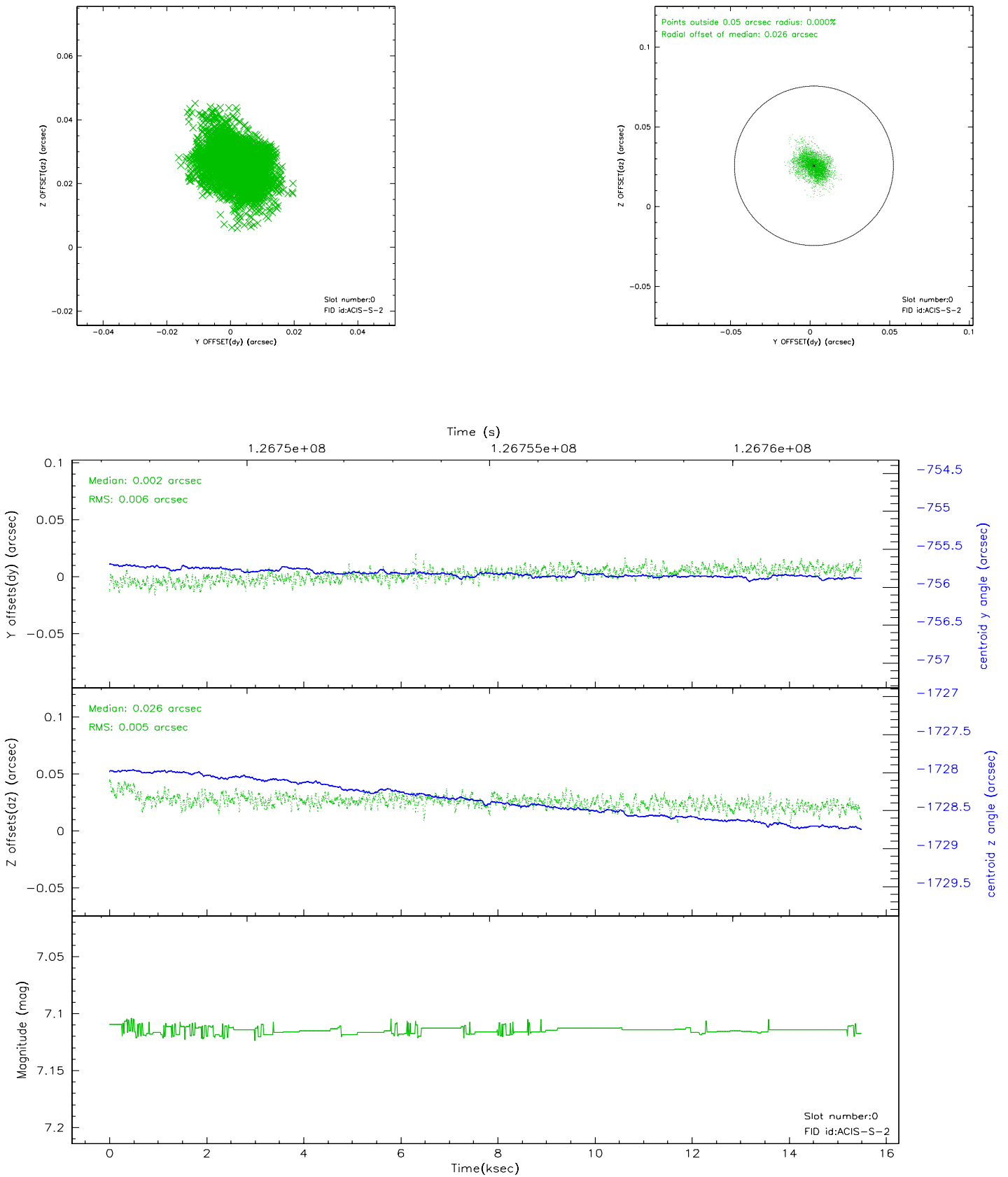


2.4.5 Slot 7

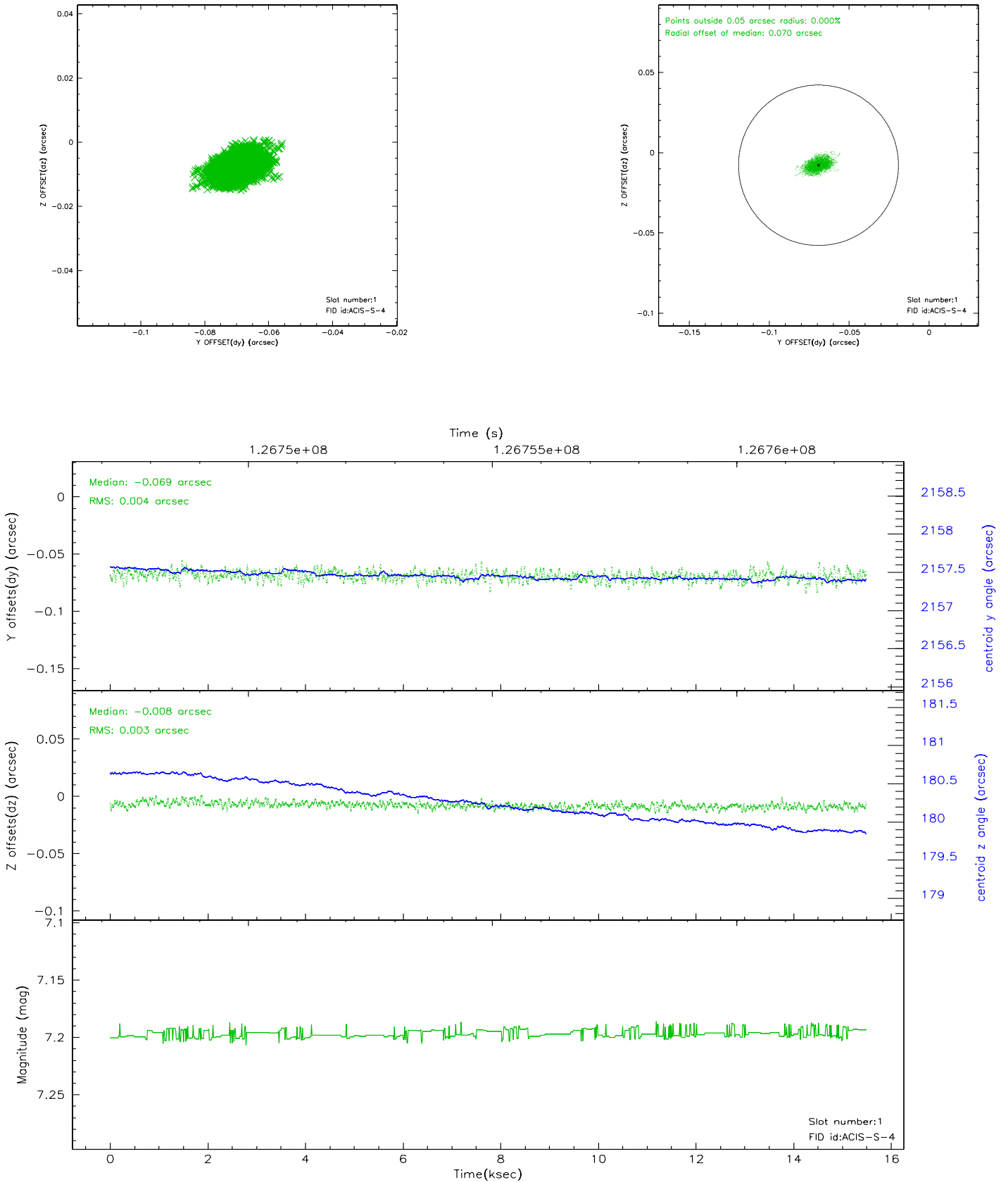


2.5 FID Slots

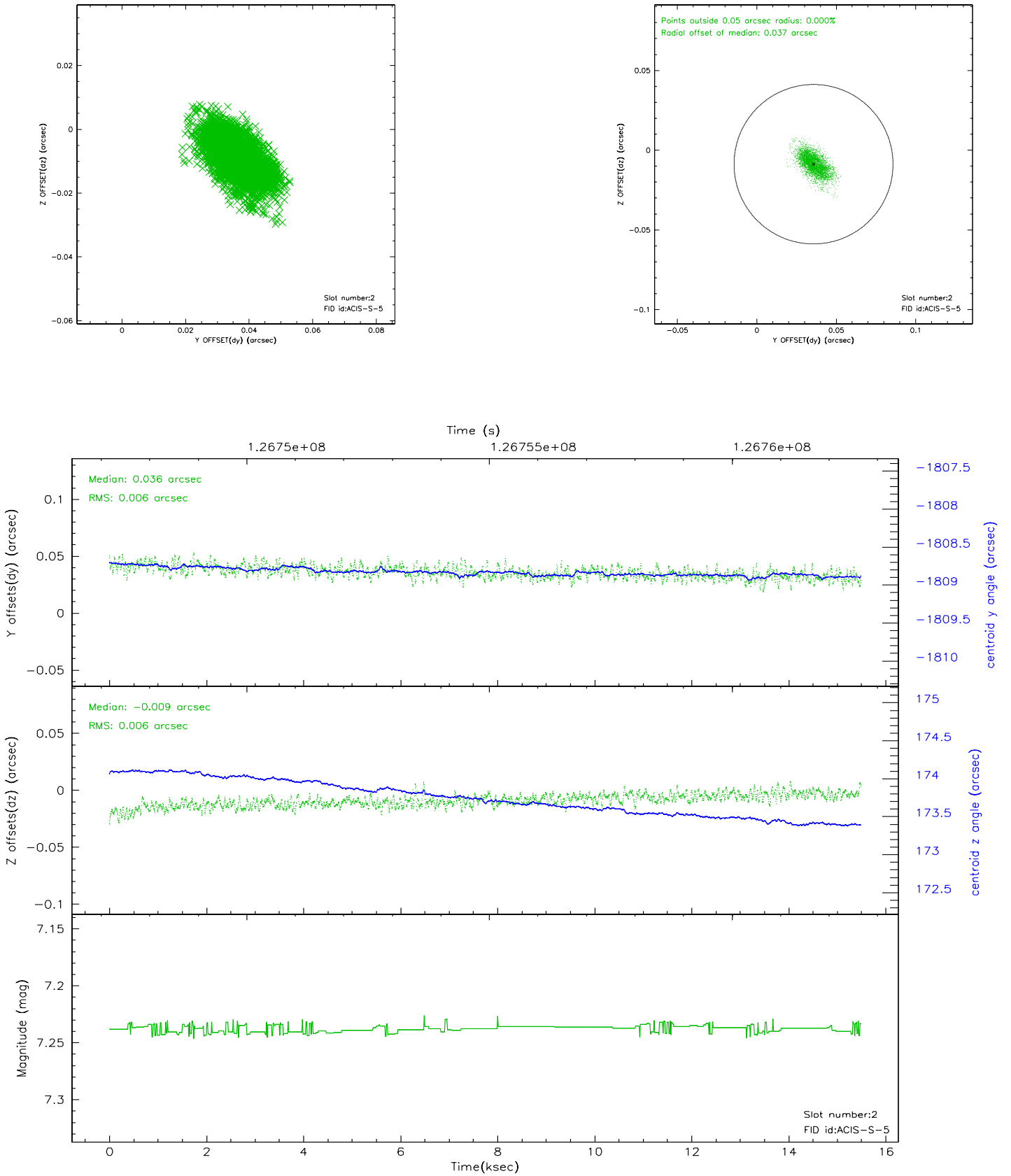
2.5.1 Slot 0



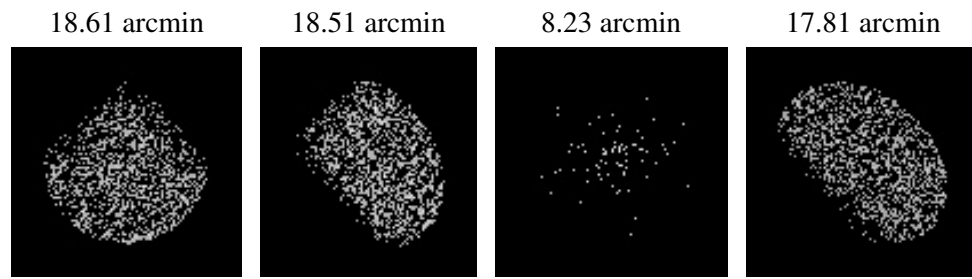
2.5.2 Slot 1



2.5.3 Slot 2



3 Point Sources



A Summary

A.1 Status

V&V Scientist	Jen Lauer
V&V Date (YYYY-MM-DD)	2006.08.28
V&V Edition	1
V&V Disposition and Status	OK
V&V Charge Time	14.963

A.2 Comments