

V&V Reference Report

L2 ASCDS Version : 7.6.9

Observation 2987 - L2 Version 001
Chandra X-Ray Center

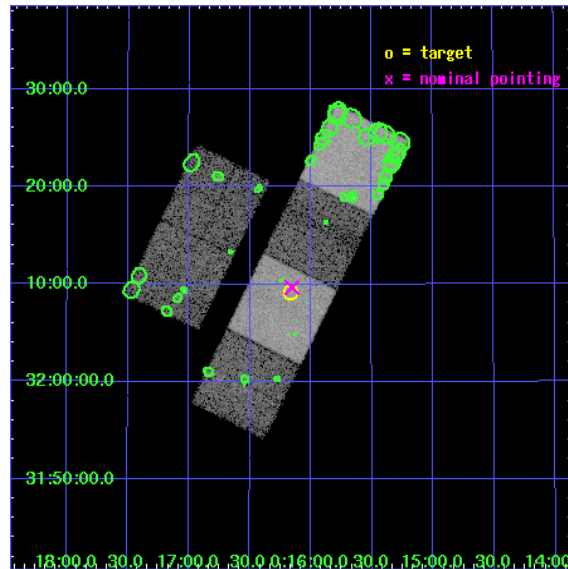
L2 Processing Date : Sep 22 2006

Contents

1	Front	2
2	OBI	3
2.1	OBI	3
2.1.1	Images	3
2.1.2	Bias	3
2.1.3	Parameters	4
2.1.4	Events	4
2.2	Compared Parameters	5
2.3	Aspect	6
2.4	Star Slots	9
2.4.1	Slot 3	9
2.4.2	Slot 4	10
2.4.3	Slot 5	11
2.4.4	Slot 6	12
2.4.5	Slot 7	13
2.5	FID Slots	14
2.5.1	Slot 0	14
2.5.2	Slot 1	15
2.5.3	Slot 2	16
3	Point Sources	17
A	Summary	18
A.1	Status	18
A.2	Comments	18

1 Front

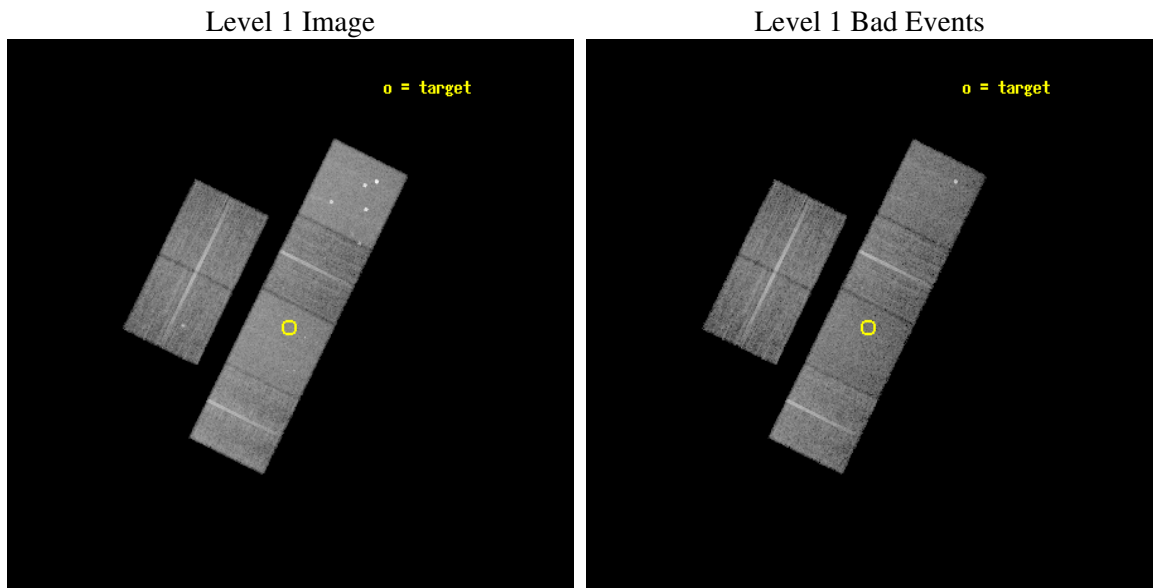
seq_num	700426
obs_id	2987
title	CHANDRA OBSERVATIONS OF A POPULATION OF TYPE 2 QUASARS DISCOVERED IN THE DPOSS
observer	PROF. S. DJORGOVSKI
object	PSS 0016+3209
dtcycle	0
cycle	P
ra_targ	4.042083
dec_targ	32.152222
ra_nom	4.0388830045805
dec_nom	32.161534897738
roll_nom	116.18369480342
revision	2
ontime	13455.999949872
livetime	13285.611976277
ontime2	13455.999949872
ontime3	13455.999949872
ontime5	13455.999949872
ontime6	13455.999949872
ontime7	13455.999949872
ontime8	13452.758979619
l2events	141507



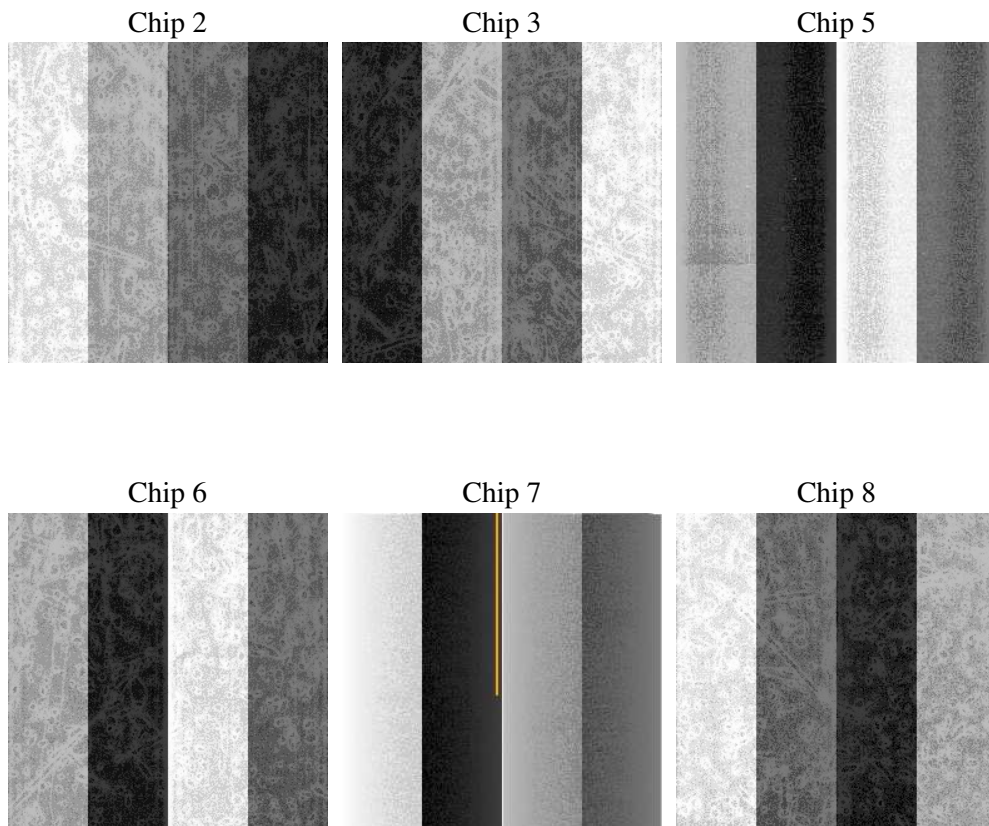
2 OBI

2.1 OBI

2.1.1 Images



2.1.2 Bias



2.1.3 Parameters

obi_num	0
ascdsver	7.6.9
caldsver	3.2.3
date	2006-09-22T19:23:01
revision	2

sched_exp_time	13700.000000
ontime	13459.872172028
ontime2	13459.872132212
ontime3	13459.872132212
ontime5	13459.87215215
ontime6	13459.87215209
ontime7	13459.872172028
ontime8	13456.631062269
l1events	642532

2.1.4 Events

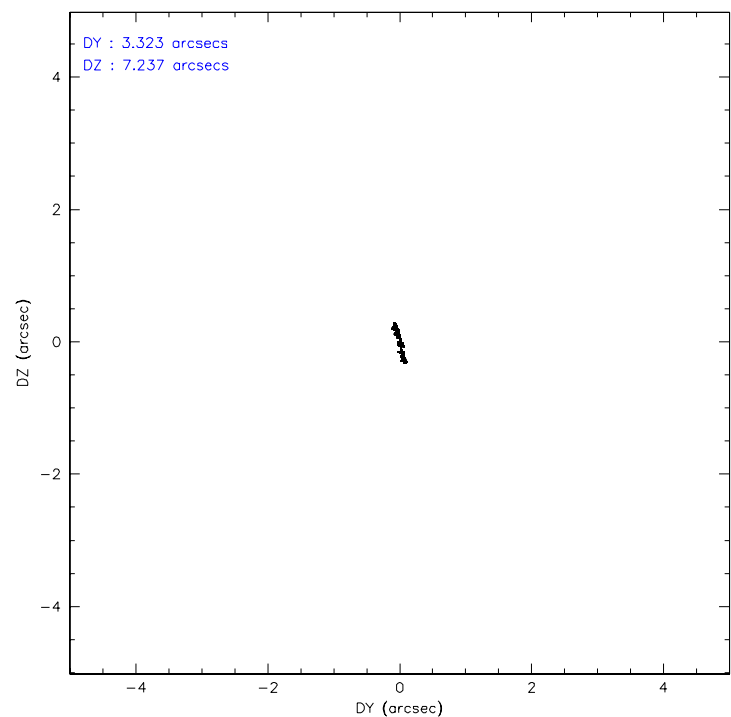
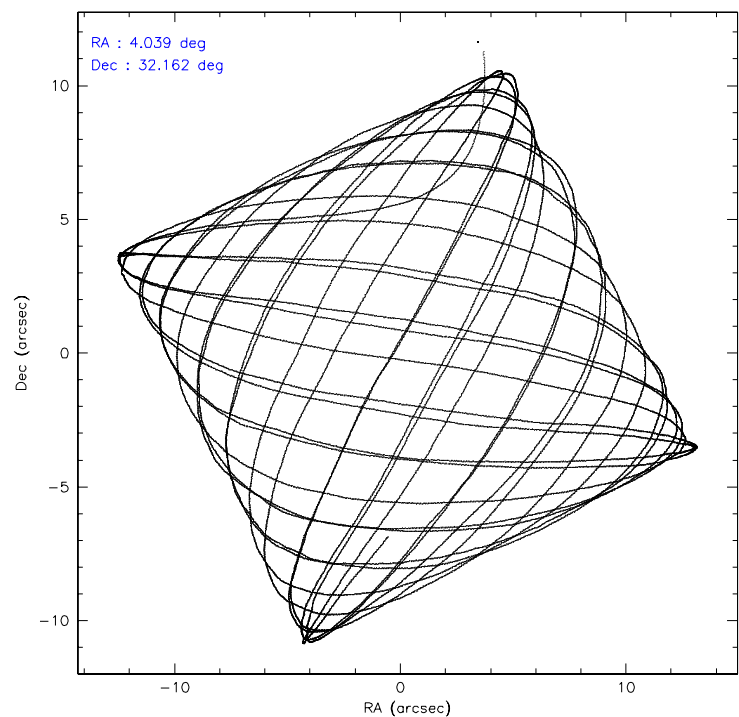
	ccd 2	ccd 3	ccd 5	ccd 6	ccd 7	ccd 8
level 1 events	91946	88612	136223	90871	117658	117222
rejected events	80851	77269	71420	79660	71000	90980
rejected %	87%	87%	52%	87%	60%	77%

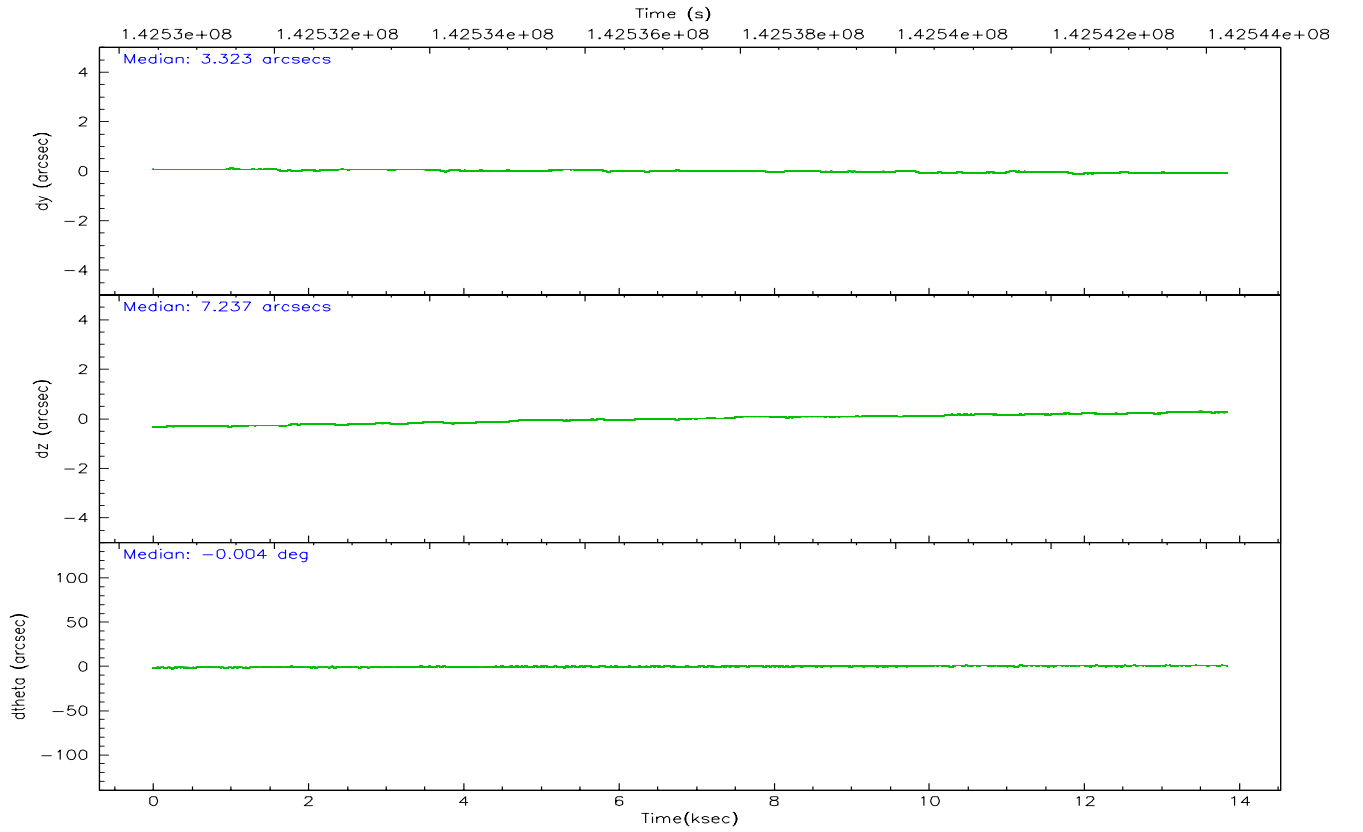
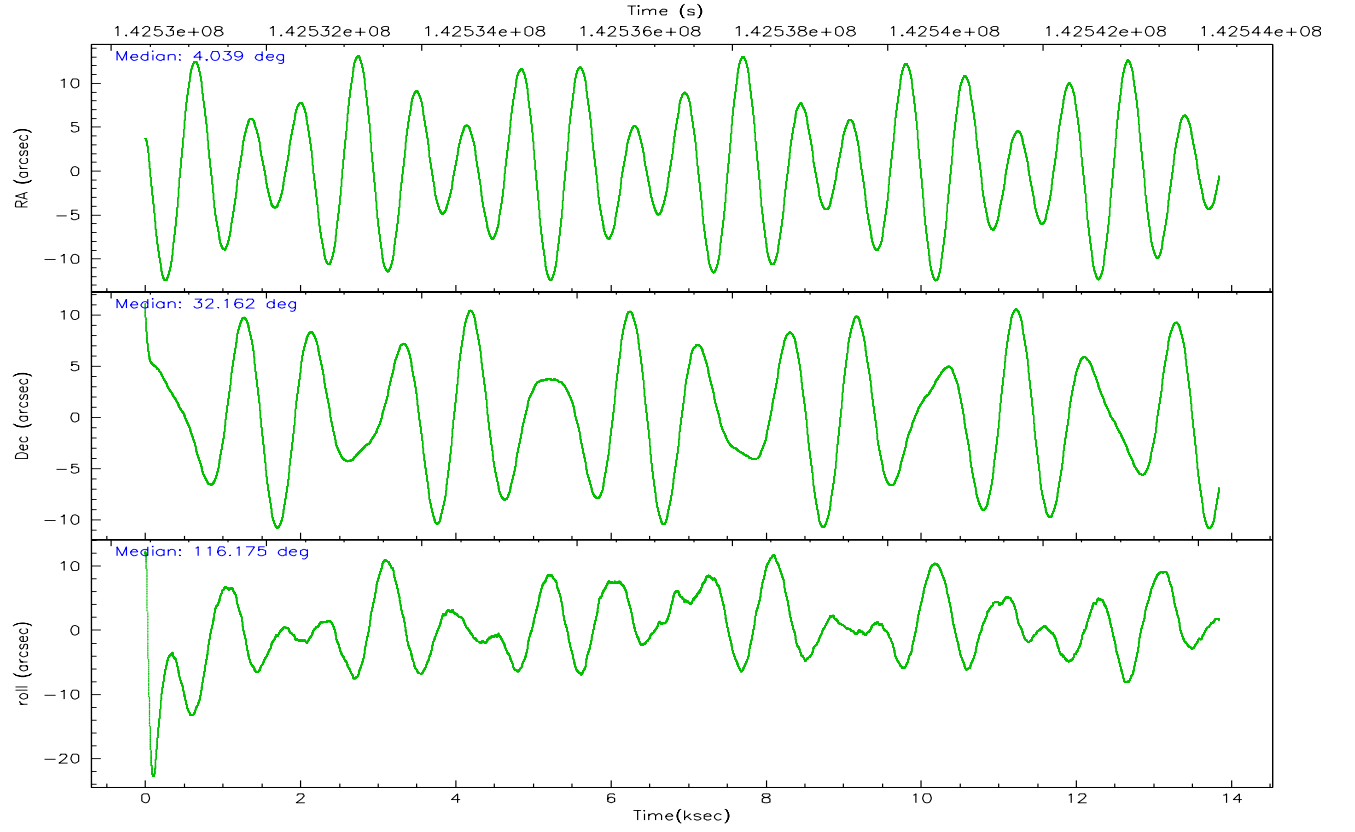
	ccd 2	ccd 3	ccd 5	ccd 6	ccd 7	ccd 8
grade 0 events	4902	5054	9355	4621	2808	8359
	5%	5%	6%	5%	2%	7%
grade 1 events	54	57	614	44	80	80
	0%	0%	0%	0%	0%	0%
grade 2 events	2320	2403	19627	2377	11511	5655
	2%	2%	14%	2%	9%	4%
grade 3 events	989	974	1461	1055	2323	2938
	1%	1%	1%	1%	1%	2%
grade 4 events	965	1010	1489	1006	2338	2768
	1%	1%	1%	1%	1%	2%
grade 5 events	3082	3514	6209	3933	7654	4967
	3%	3%	4%	4%	6%	4%
grade 6 events	1922	1907	32890	2157	27685	6530
	2%	2%	24%	2%	23%	5%
grade 7 events	77712	73693	64578	75678	63259	85925
	84%	83%	47%	83%	53%	73%

2.2 Compared Parameters

Parameter	Planned	Actual	Parameter	Planned	Actual
Instrument	ACIS	ACIS	Obspar format version number	6	6
Detector	ACIS-235678	ACIS-235678	Obspar file type	PREDICTED	ACTUAL
Grating	NONE	NONE	Obspar update status	NONE	UPDATED
Data mode	FAINT	FAINT	Number of optional ACIS chips dropped	0	0
Observation mode	POINTING	POINTING	On-chip summing requested	N	N
Pointing RA	4.065871	4.038883004580466	Subarray requested	NONE	NONE
Pointing Dec	32.146664	32.16153489773826	Alternating exposures requested	N	N
Pointing Roll	116.012663	116.1836948034231	Primary exposure time	0.000000	3.2
SIM focus pos (mm)	-0.684267	-0.6828225247311905			
SIM defocus (mm)	0	0.001444936568705701			
SIM translation stage pos (mm)	-190.132523	-190.1425803651734			
SIM translation stage offset (mm)	0	0.01005778216563158			
Observation start time	142530573.184000	142529781.17358			
Observation start date	2002-07-08T15:48:29	2002-07-08T15:36:21			
Observation end time	142544273.184000	142544604.72419			
Observation end date	2002-07-08T19:36:49	2002-07-08T19:43:24			
Read mode	TIMED	TIMED			

2.3 Aspect



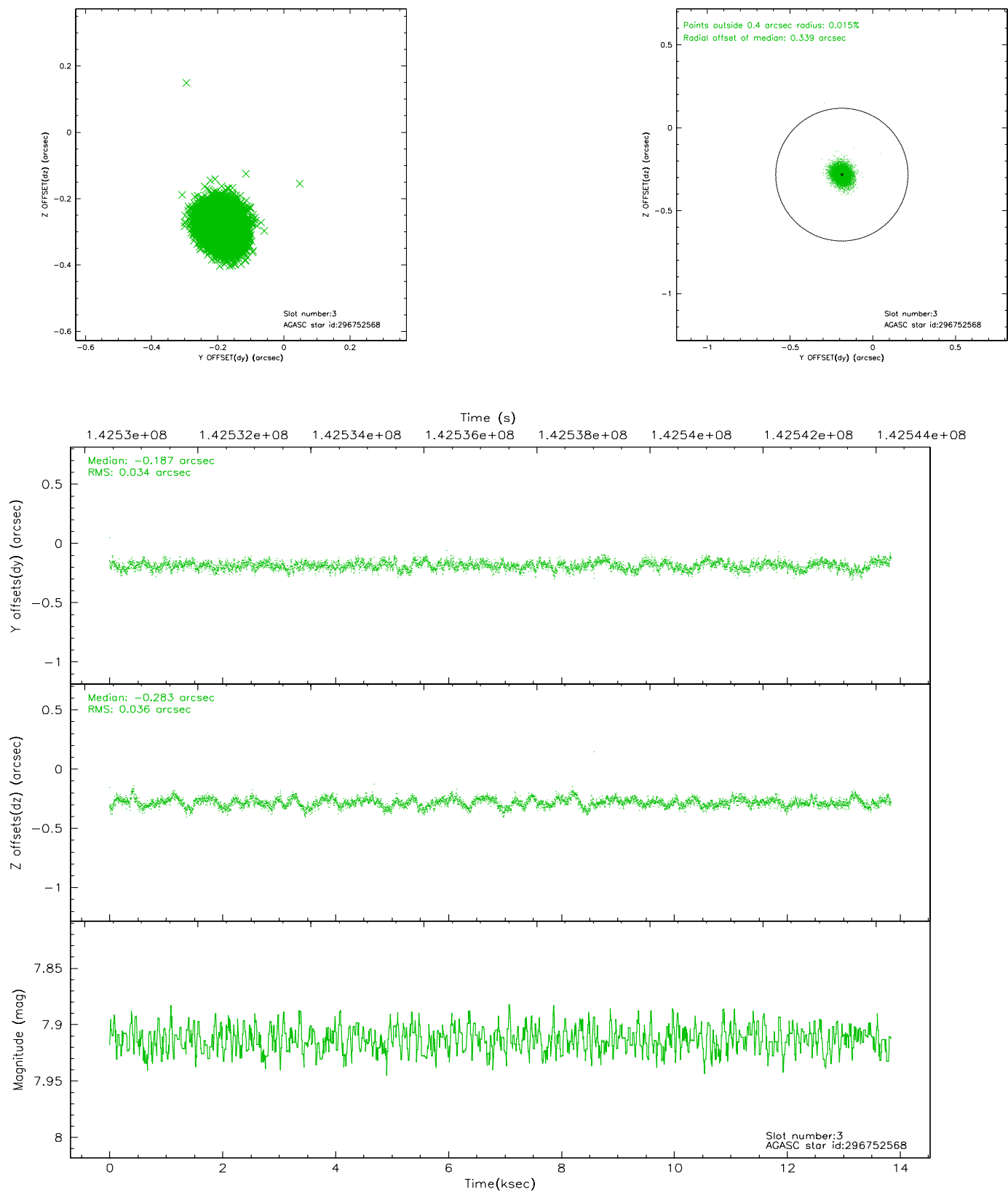


Slot Statistics

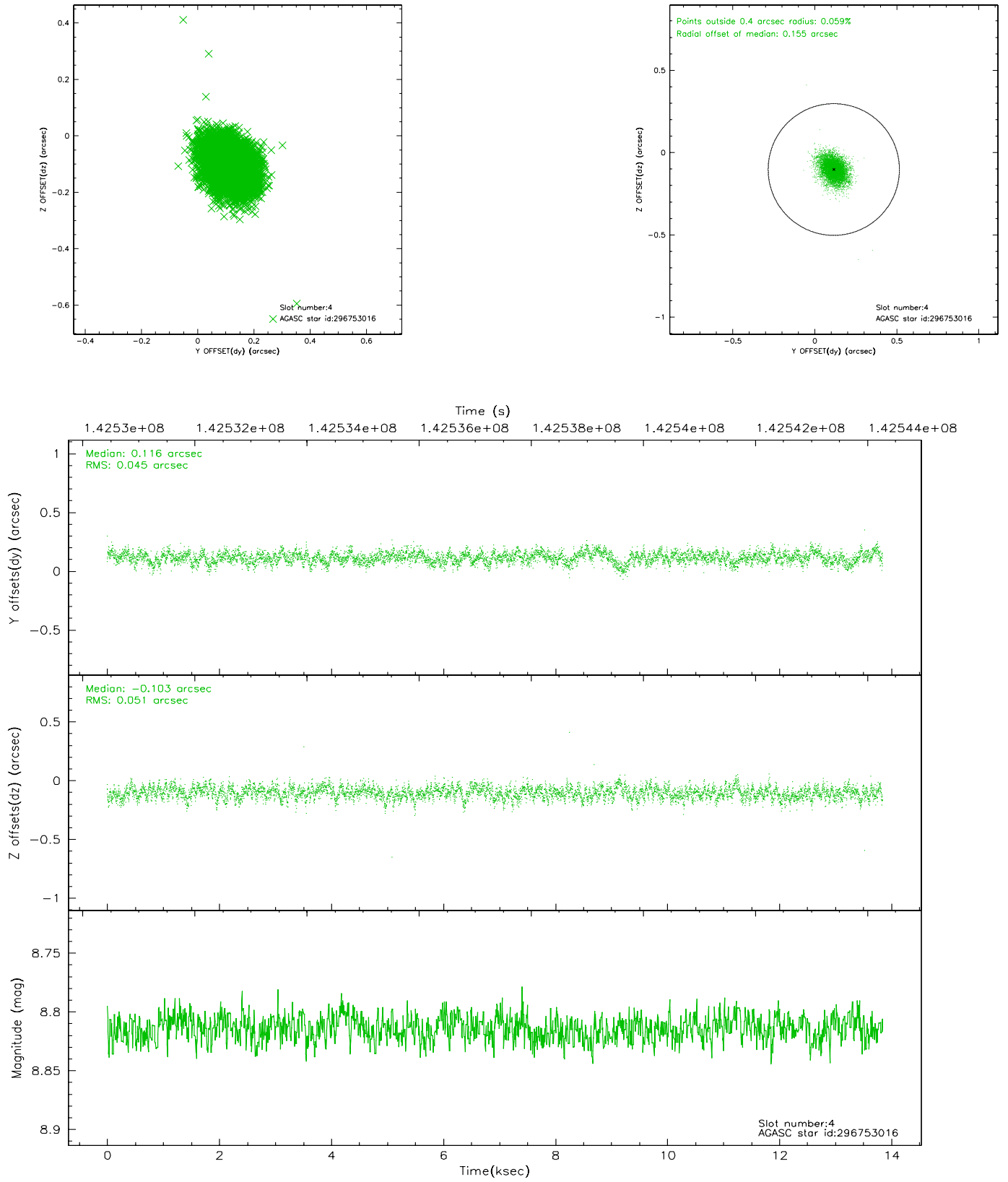
slot	status	id	mag	n_pts	med_dy	med_dz	dr1	dr2	ra	dec	mean_y	mean_z
0	FID	ACIS-S-2	7.11	3378	-0.003	0.021	0.008	0.013	0.000000	0.000000	-755.98	-1728.33
1	FID	ACIS-S-4	7.20	3376	-0.038	-0.004	0.007	0.011	0.000000	0.000000	2157.11	179.78
2	FID	ACIS-S-5	7.24	3377	0.010	-0.008	0.007	0.012	0.000000	0.000000	-1808.37	173.83
3	GUIDE	296752568	7.91	6754	-0.187	-0.283	0.052	0.085	3.440928	32.556698	2161.97	1053.92
4	GUIDE	296753016	8.81	6753	0.116	-0.103	0.071	0.119	3.652161	32.072873	316.29	1249.20
5	GUIDE	296756544	9.70	6734	0.021	0.104	0.145	0.240	4.415090	32.967752	2195.03	-2245.03
6	GUIDE	296889120	9.92	6743	-0.089	0.219	0.126	0.207	4.532568	32.720252	1238.32	-2177.79
7	GUIDE	296751032	9.86	6753	0.146	0.064	0.125	0.203	4.347384	32.502054	775.61	-1330.41

2.4 Star Slots

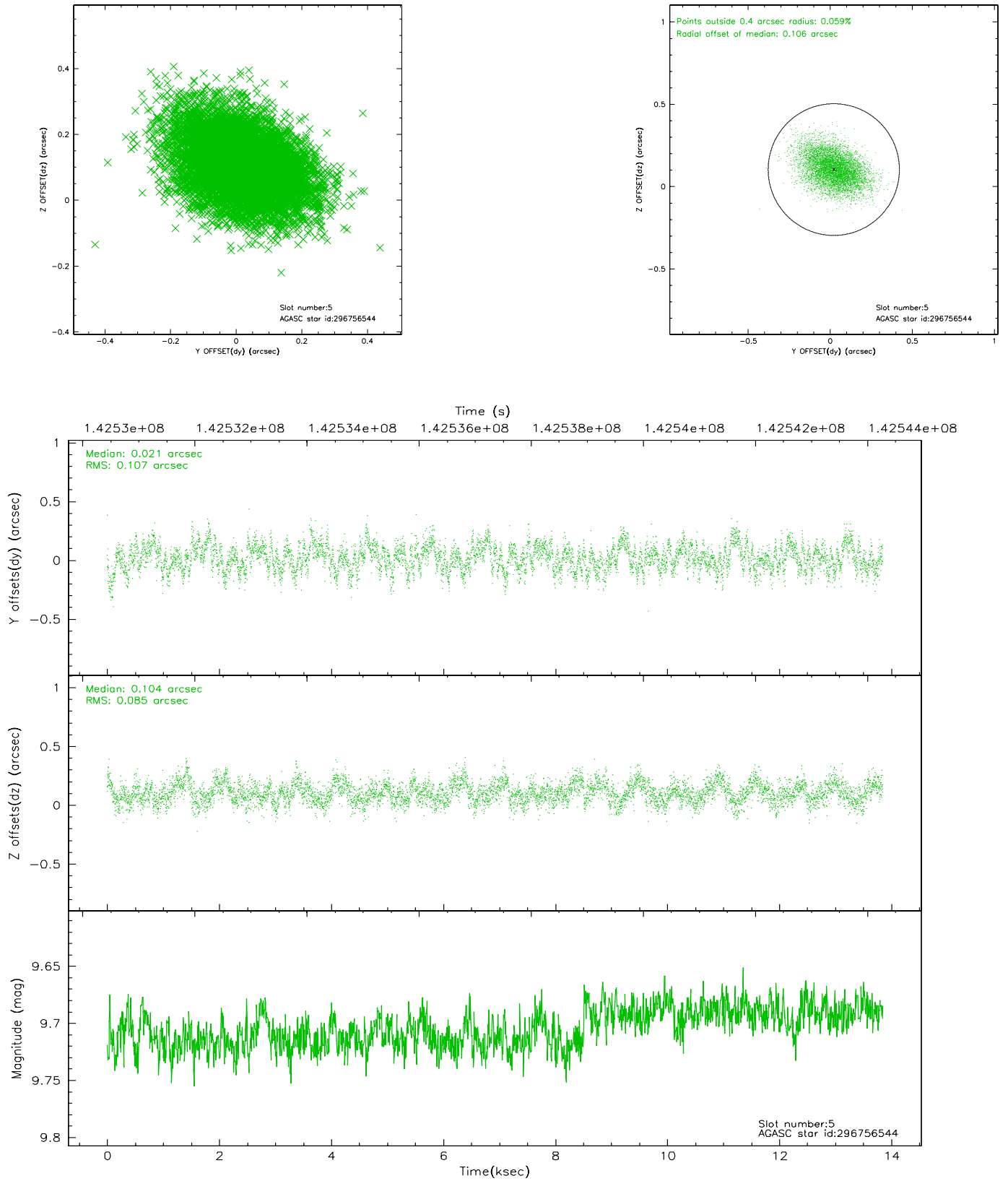
2.4.1 Slot 3



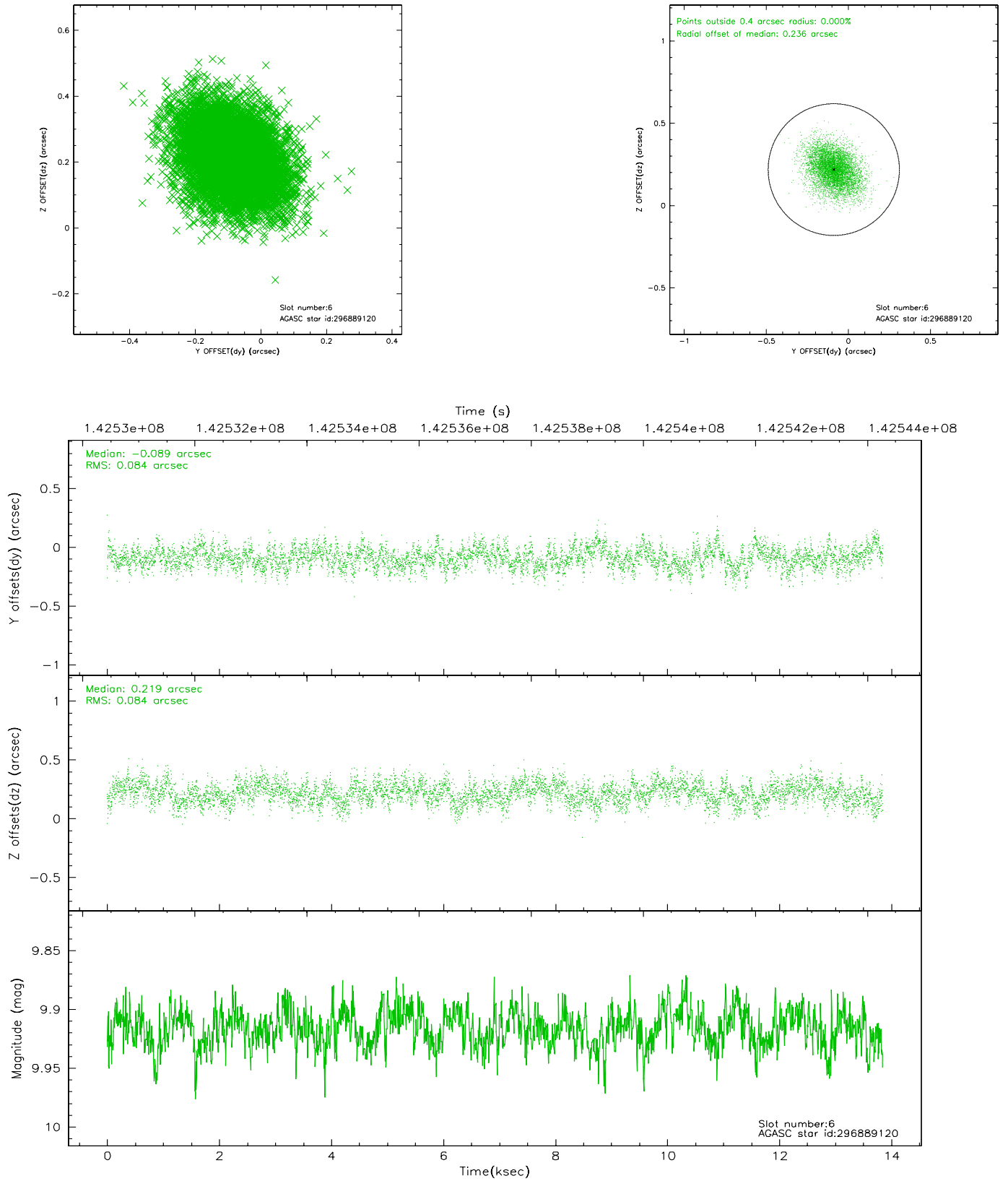
2.4.2 Slot 4



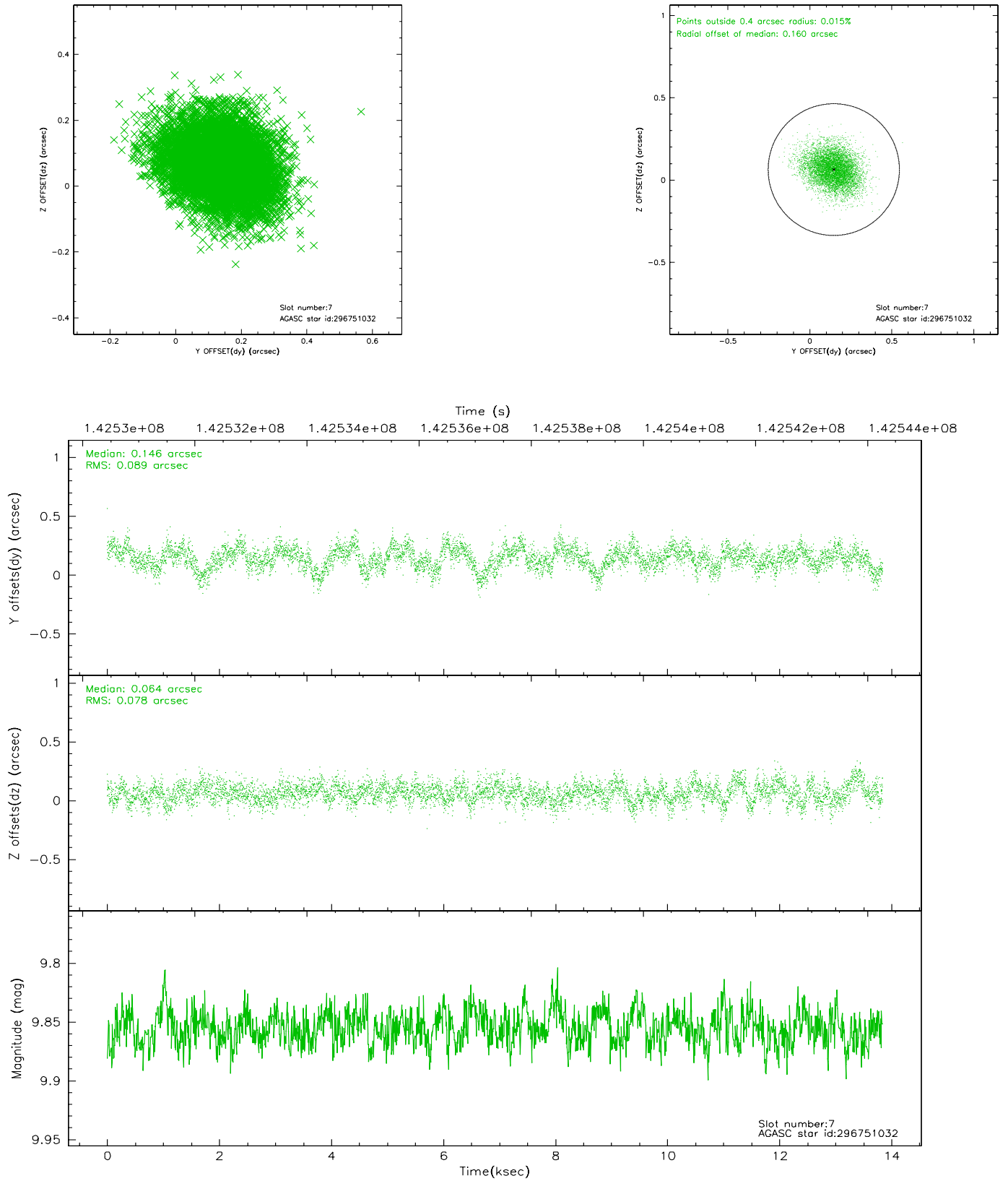
2.4.3 Slot 5



2.4.4 Slot 6

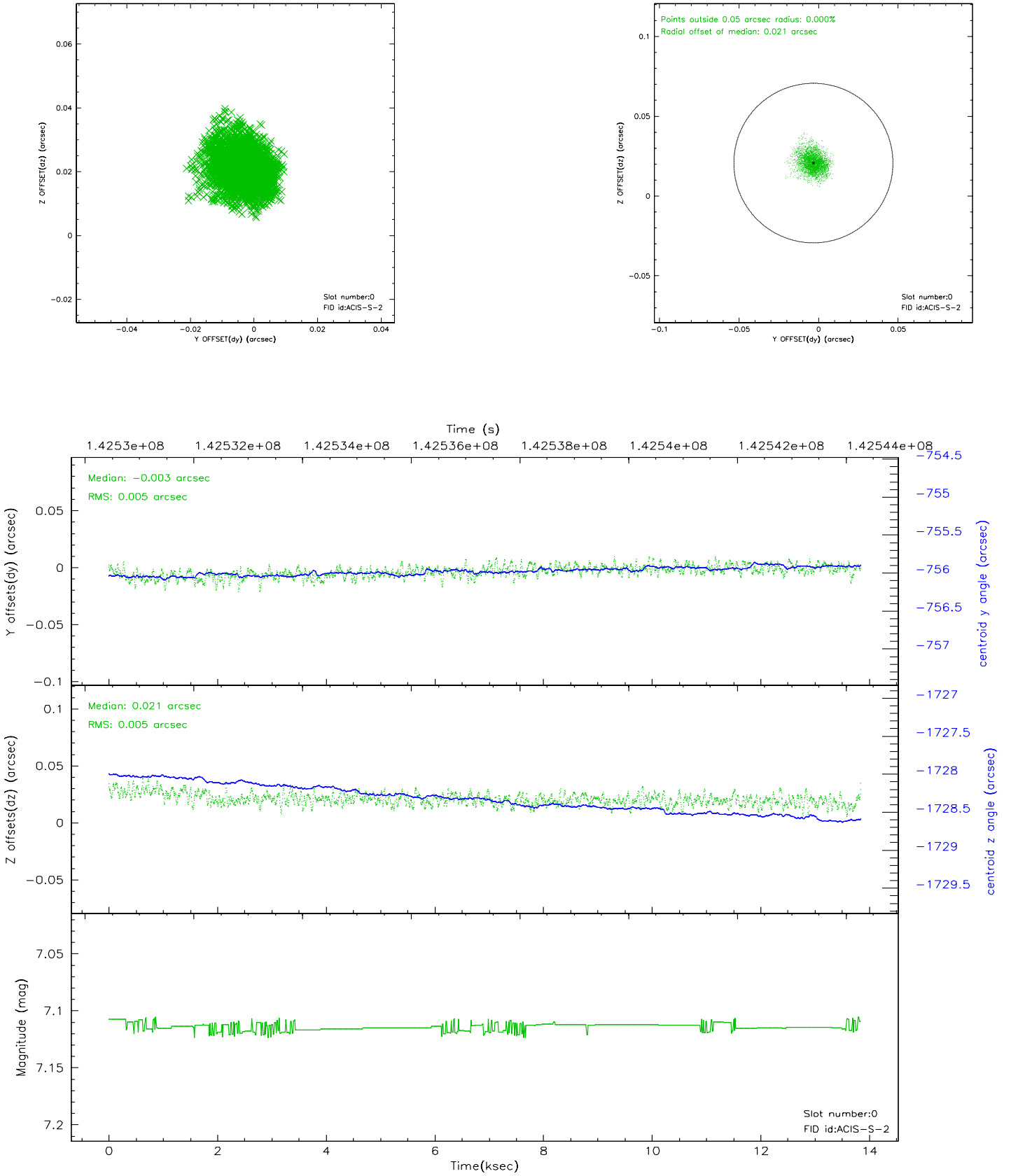


2.4.5 Slot 7

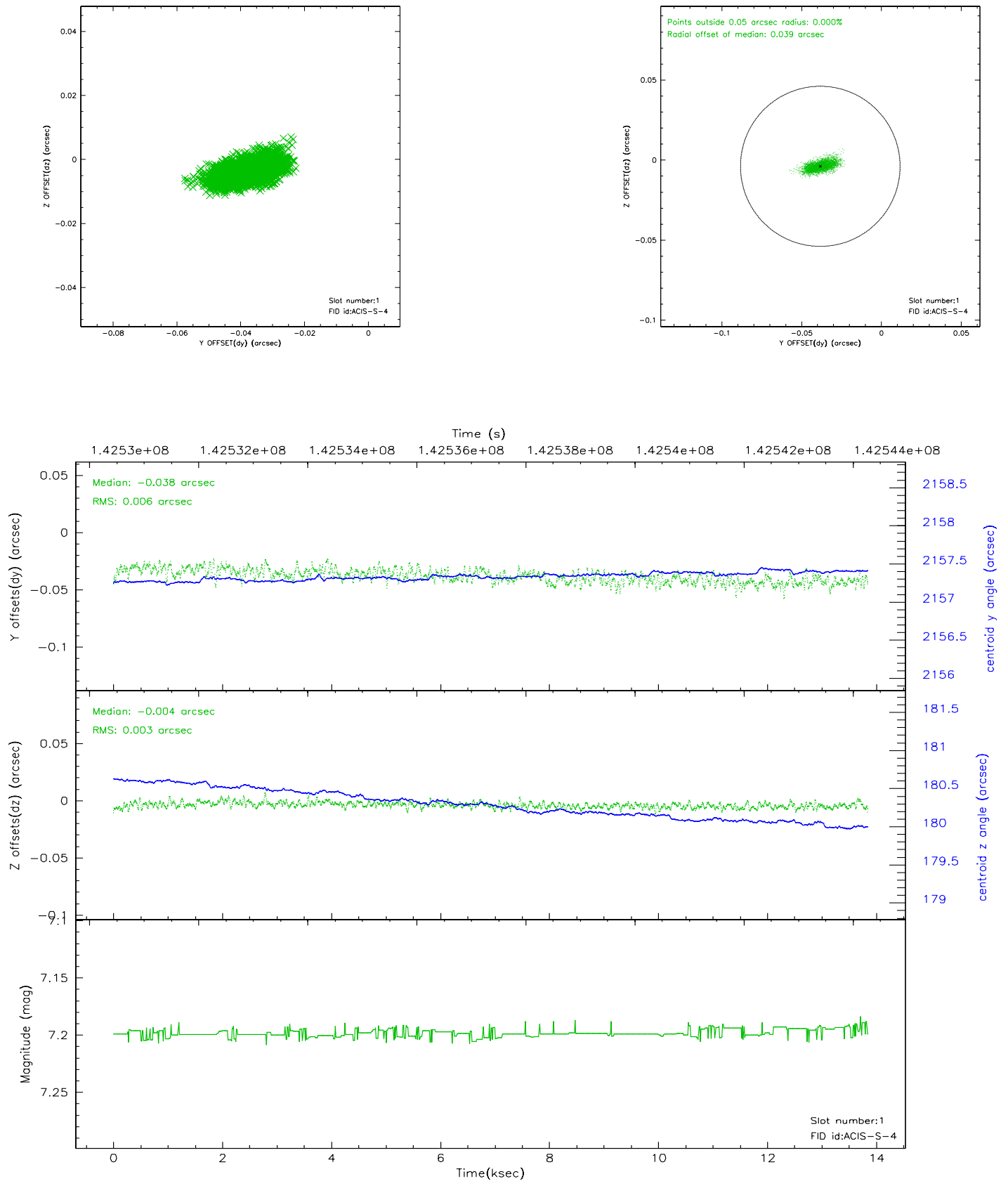


2.5 FID Slots

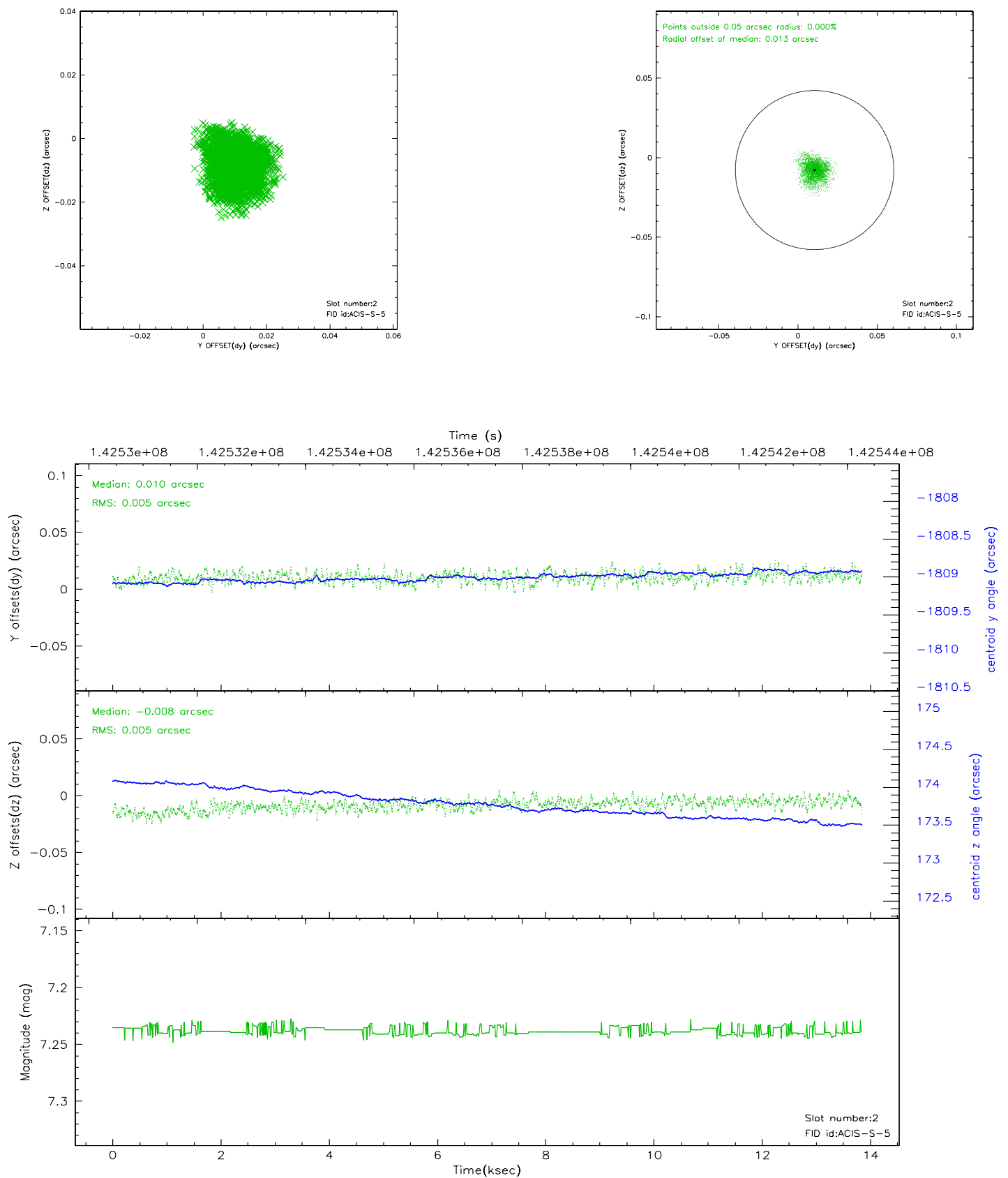
2.5.1 Slot 0



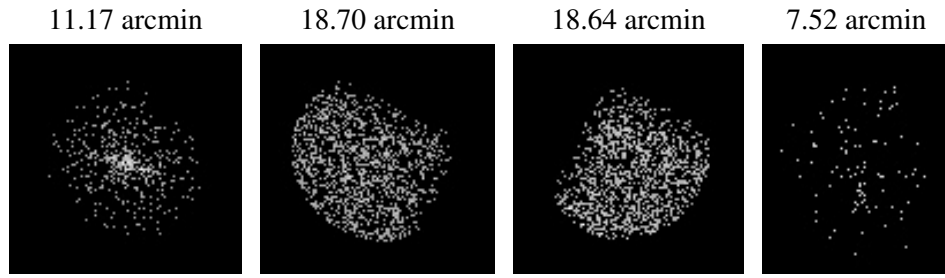
2.5.2 Slot 1



2.5.3 Slot 2



3 Point Sources



A Summary

A.1 Status

V&V Scientist	Beth Sundheim
V&V Date (YYYY-MM-DD)	2006.09.24
V&V Edition	1
V&V Disposition and Status	OK
V&V Charge Time	13.455

A.2 Comments