

V&V Reference Report

L2 ASCDS Version : 8.4.5

Observation 2973 - L2 Version 5
Chandra X-Ray Center

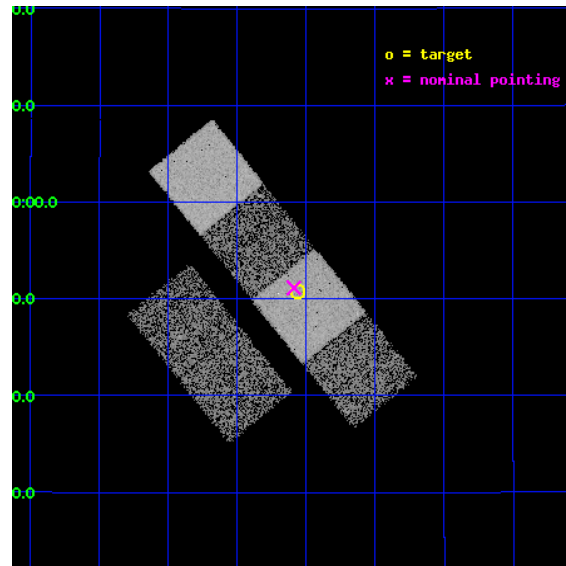
L2 Processing Date : Nov 30 2012

Contents

1	Front	2
2	OBI	3
2.1	OBI	3
2.1.1	Images	3
2.1.2	Bias	3
2.1.3	Parameters	4
2.1.4	Events	4
2.2	Compared Parameters	5
2.3	Aspect	6
2.4	Star Slots	9
2.4.1	Slot 3	9
2.4.2	Slot 4	10
2.4.3	Slot 6	11
2.4.4	Slot 7	12
2.5	FID Slots	13
2.5.1	Slot 0	13
2.5.2	Slot 1	14
2.5.3	Slot 2	15
A	Summary	16
A.1	Status	16
A.2	Comments	16

1 Front

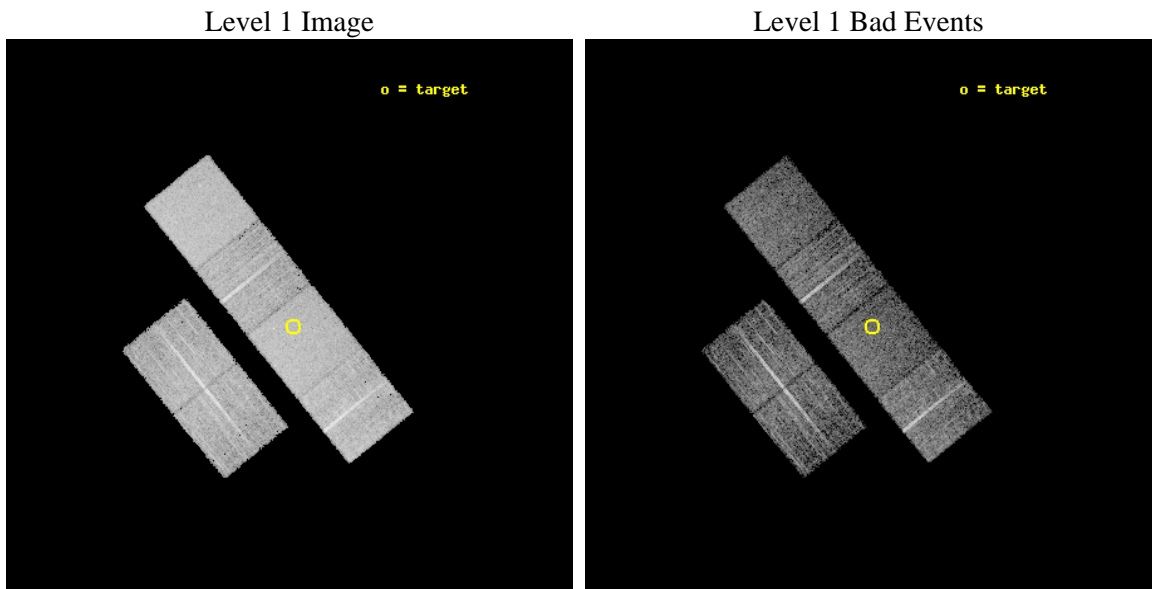
seq_num	700412	Sequence number
obs_id	2973	Observation id
title	A COMPLETE X-RAY SAMPLE OF BROAD ABSORPTION LINE QSOS	Proposal tit
observer	Professor Gordon Garmire	Principal investigator
object	LBQS 1240+1607	Source name
dtcycle	0	
cycle	P	events from which exps? Prim/Second/Both
ra_targ	190.765	Observer's specified target RA [deg]
dec_targ	15.846389	Observer's specified target Dec [deg]
ra_nom	190.77228079352	Nominal RA [deg]
dec_nom	15.852347731703	Nominal Dec [deg]
roll_nom	51.086627175338	Nominal Roll [deg]
revision	5	Processing version of data
ontime	6734.539013356	Sum of GTIs [s]
livetime	6649.2622253163	Livetime [s]
ontime2	6734.5800533593	Sum of GTIs [s]
ontime3	6734.4158634245	Sum of GTIs [s]
ontime5	6734.4979434311	Sum of GTIs [s]
ontime6	6734.4569034278	Sum of GTIs [s]
ontime7	6734.539013356	Sum of GTIs [s]
ontime8	6731.1337635517	Sum of GTIs [s]
l2events	68004	Number of level 2 events



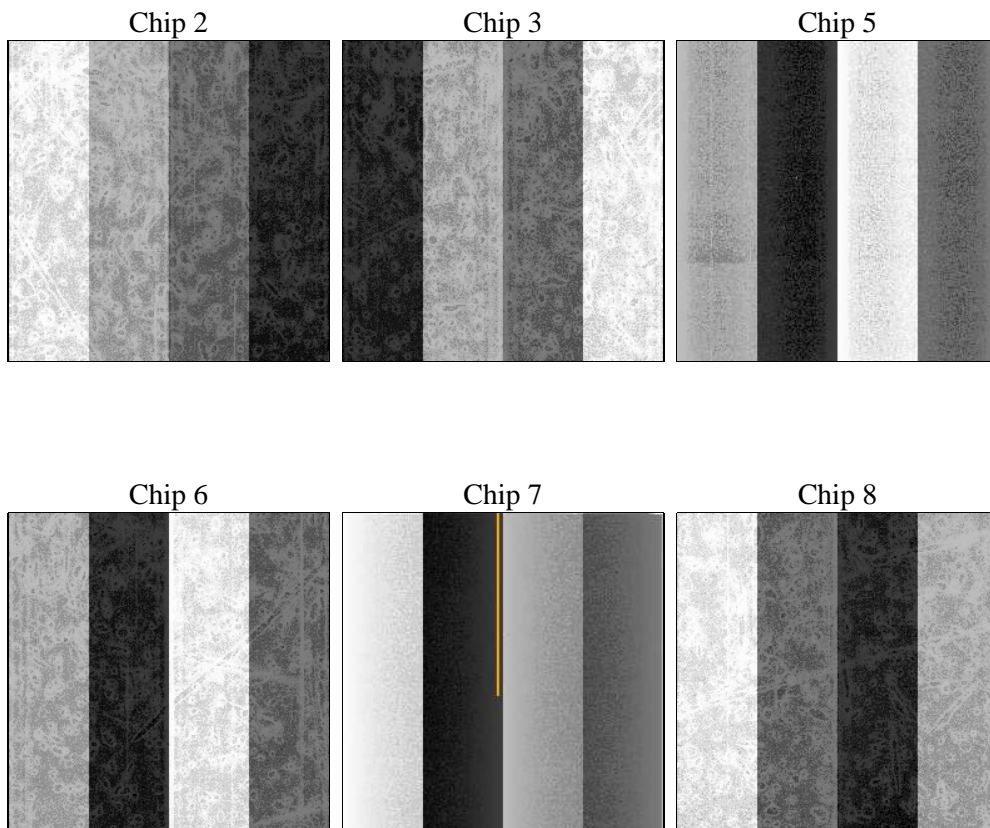
2 OBI

2.1 OBI

2.1.1 Images



2.1.2 Bias



2.1.3 Parameters

obi_num	1	Obi number	sched_exp_time	7000.000000	[s] Scheduled observation exposure time
ascdsver	8.4.5	Processing system revision	ontime	6734.539013356	Sum of GTIs [s]
caldbver	4.5.2	 	ontime2	6734.5800533593	Sum of GTIs [s]
date	2012-11-30T21:48:02	Date and time of file creation	ontime3	6734.4158634245	Sum of GTIs [s]
revision	5	Processing version of data	ontime5	6734.4979434311	Sum of GTIs [s]
			ontime6	6734.4569034278	Sum of GTIs [s]
			ontime7	6734.539013356	Sum of GTIs [s]
			ontime8	6731.1337635517	Sum of GTIs [s]
			l1events	307636	Number of level 1 events

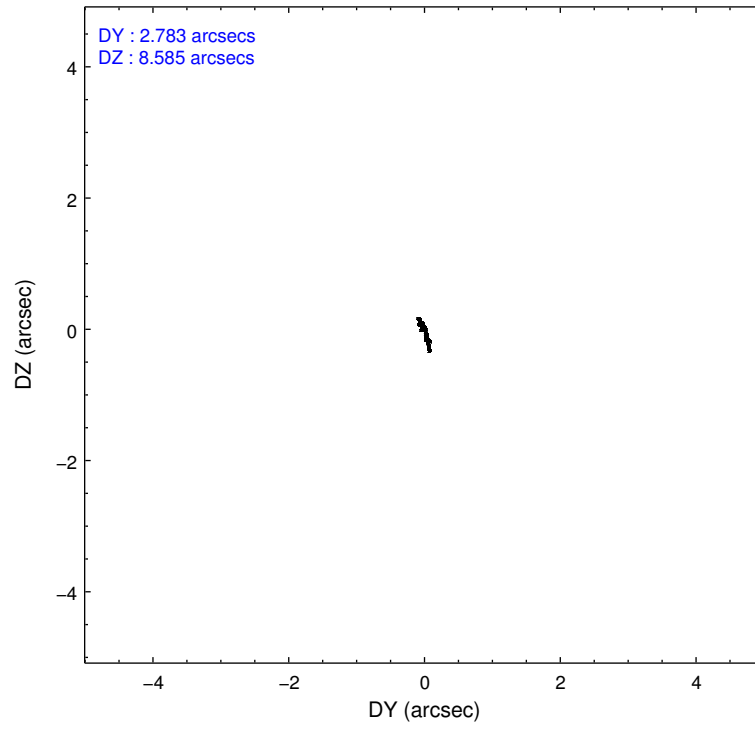
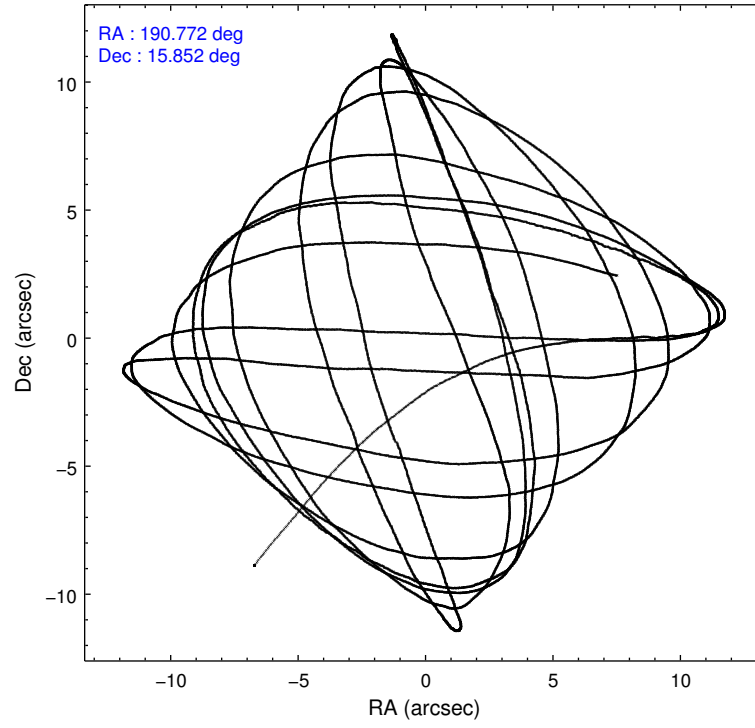
2.1.4 Events

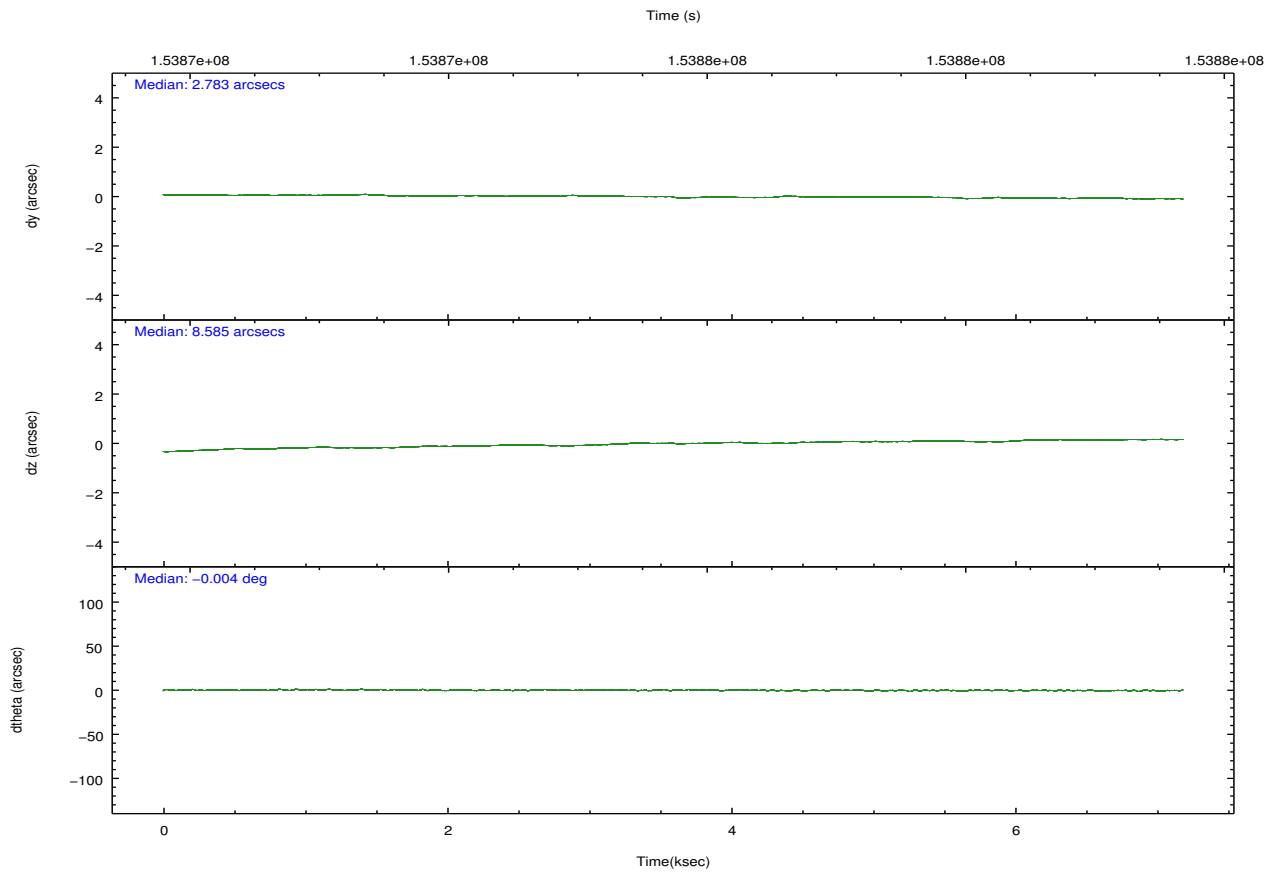
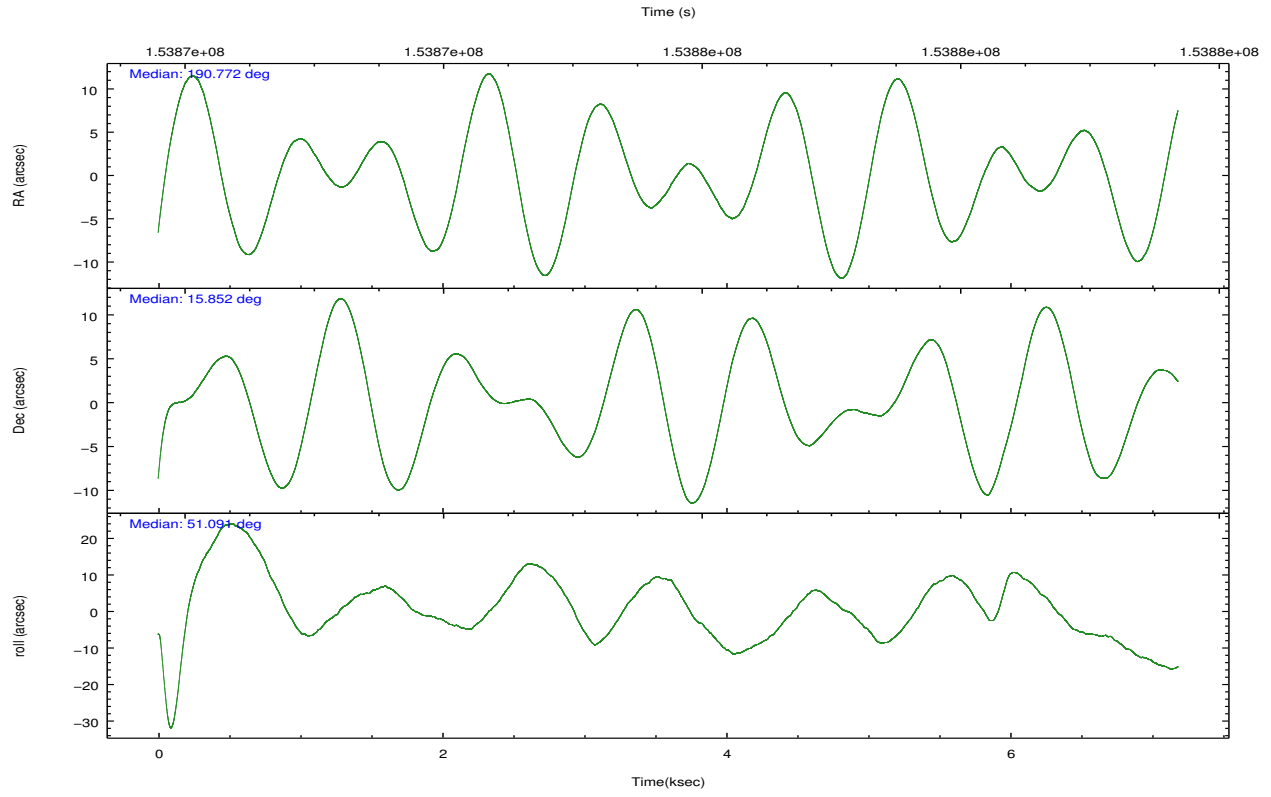
	ccd 2	ccd 3	ccd 5	ccd 6	ccd 7	ccd 8		ccd 2	ccd 3	ccd 5	ccd 6	ccd 7	ccd 8
level 1 events	45011	42983	61061	43745	56825	58011	grade 0 events	2318	2170	2032	2021	2353	3407
rejected events	39895	38074	33678	38791	32967	46963		5%	5%	3%	4%	4%	5%
rejected %	88%	88%	55%	88%	58%	80%	grade 1 events	21	27	83	21	54	33
								0%	0%	0%	0%	0%	0%
							grade 2 events	1051	919	8167	992	4747	2478
								2%	2%	13%	2%	8%	4%
							grade 3 events	492	550	1178	502	2191	1090
								1%	1%	1%	1%	3%	1%
							grade 4 events	473	441	1145	491	2124	1081
								1%	1%	1%	1%	3%	1%
							grade 5 events	1673	1818	4699	1894	5359	2454
								3%	4%	7%	4%	9%	4%
							grade 6 events	783	833	14870	950	12455	2996
								1%	1%	24%	2%	21%	5%
							grade 7 events	38200	36225	28887	36874	27542	44472
								84%	84%	47%	84%	48%	76%

2.2 Compared Parameters

Parameter	Planned	Actual	Parameter	Planned	Actual
Instrument	ACIS	ACIS	Obspar format version number	7	7
Detector	ACIS-235678	ACIS-235678	Obspar file type	PREDICTED	ACTUAL
Grating	NONE	NONE	Obspar update status	NONE	UPDATED
Data mode	FAINT	FAINT	Number of optional ACIS chips dropped	0	0
Observation mode	POINTING	POINTING	On-chip summing requested	N	N
[deg] Pointing RA	190.768256	190.772280793525	Subarray requested	NONE	NONE
[deg] Pointing Dec	15.825386	15.85234773170291	Alternating exposures requested	N	N
[deg] Pointing Roll	50.931049	51.08662717533848	[s] Primary exposure time	0.000000	3.2
[mm] SIM focus pos	-0.684267	-0.6828225247311905			
[mm] SIM defocus	0	0.001444936568705701			
[mm] SIM translation stage pos	-190.132523	-190.1400660498719			
[mm] SIM translation stage offset	0	0.00754346686406393			
[s] Observation start time (MET)	153872321.184000	153871531.17983			
Observation start date	2002-11-16T22:17:37	2002-11-16T22:05:31			
[s] Observation end time (MET)	153879321.184000	153879502.60517			
Observation end date	2002-11-17T00:14:17	2002-11-17T00:18:22			
Read mode	TIMED	TIMED			

2.3 Aspect



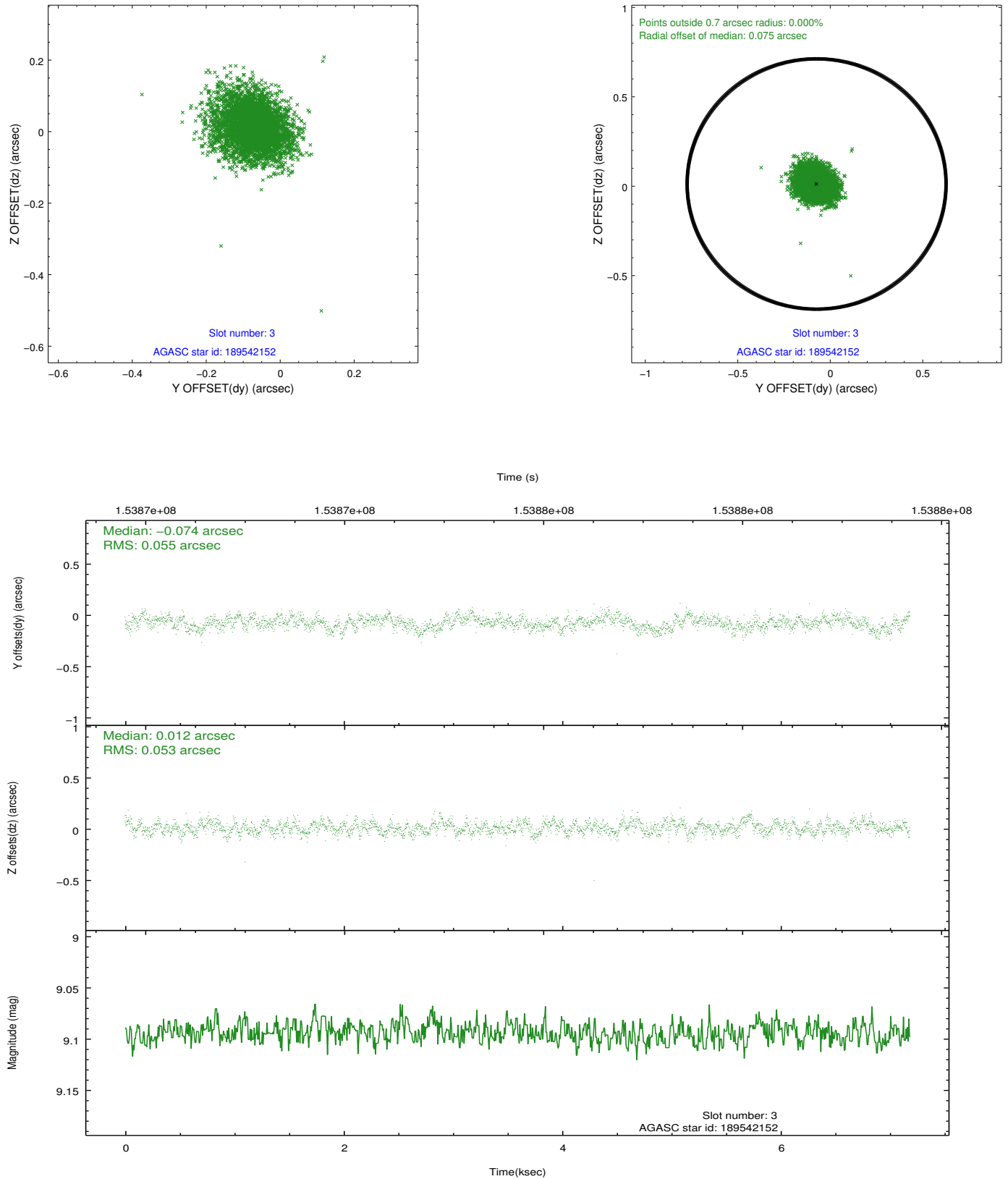


Slot Statistics

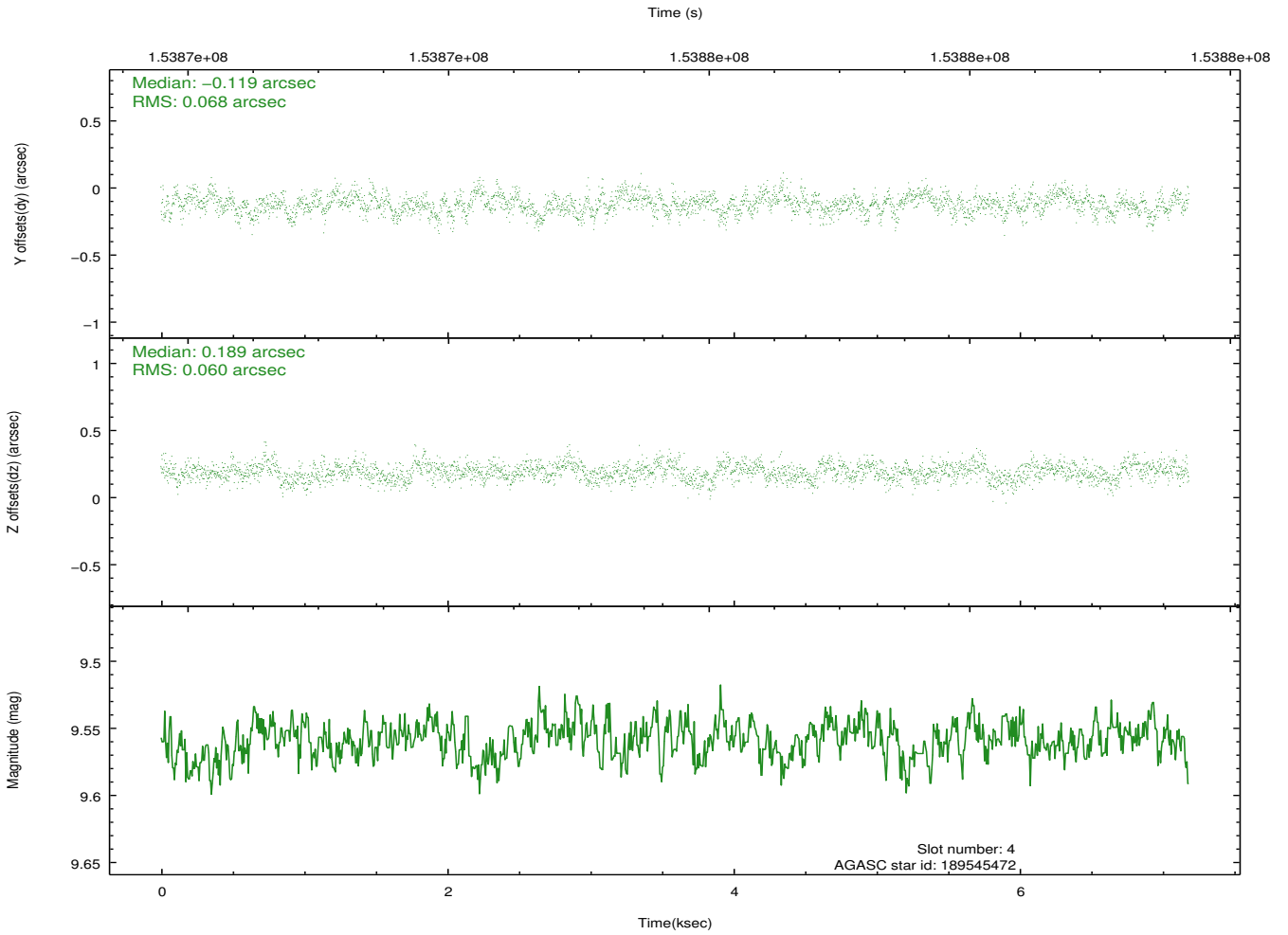
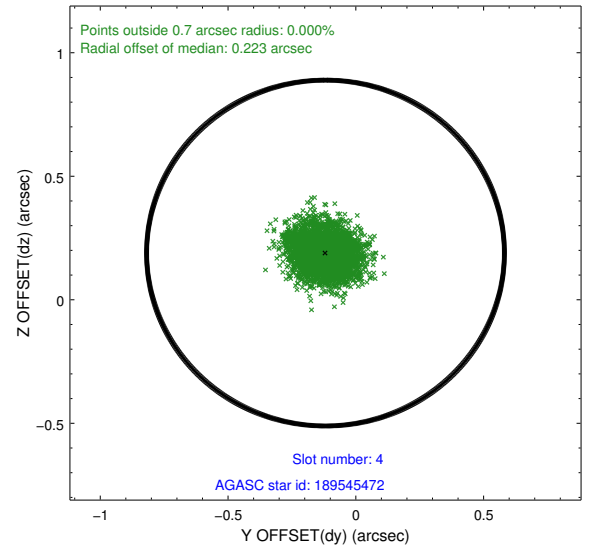
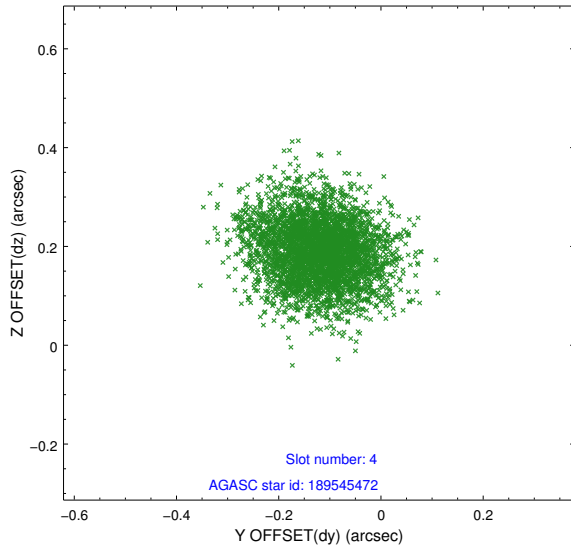
slot	status	id	mag	n_pts	med_dy	med_dz	dr1	dr2	ra	dec	mean_y	mean_z
0	FID	ACIS-S-2	7.11	1752	-0.016	-0.006	0.008	0.014	0.000000	0.000000	-755.44	-1729.77
1	FID	ACIS-S-4	7.20	1752	-0.009	0.009	0.006	0.012	0.000000	0.000000	2157.49	177.89
2	FID	ACIS-S-5	7.24	1753	-0.007	0.005	0.007	0.012	0.000000	0.000000	-1807.23	172.49
3	GUIDE	189542152	9.09	3504	-0.074	0.012	0.081	0.131	190.948751	15.714368	83.87	-737.63
4	GUIDE	189545472	9.56	3503	-0.119	0.189	0.097	0.159	191.491172	15.770525	1428.72	-2066.76
5	OMITTED		0.00	0	0.000	0.000	0.000	0.000	0.000000	0.000000	0.00	0.00
6	GUIDE	189539224	7.60	3505	0.247	-0.054	0.072	0.111	190.277008	15.376622	-2326.97	305.19
7	GUIDE	189537824	10.46	3502	-0.053	-0.147	0.188	0.304	190.661171	16.008264	277.50	702.28

2.4 Star Slots

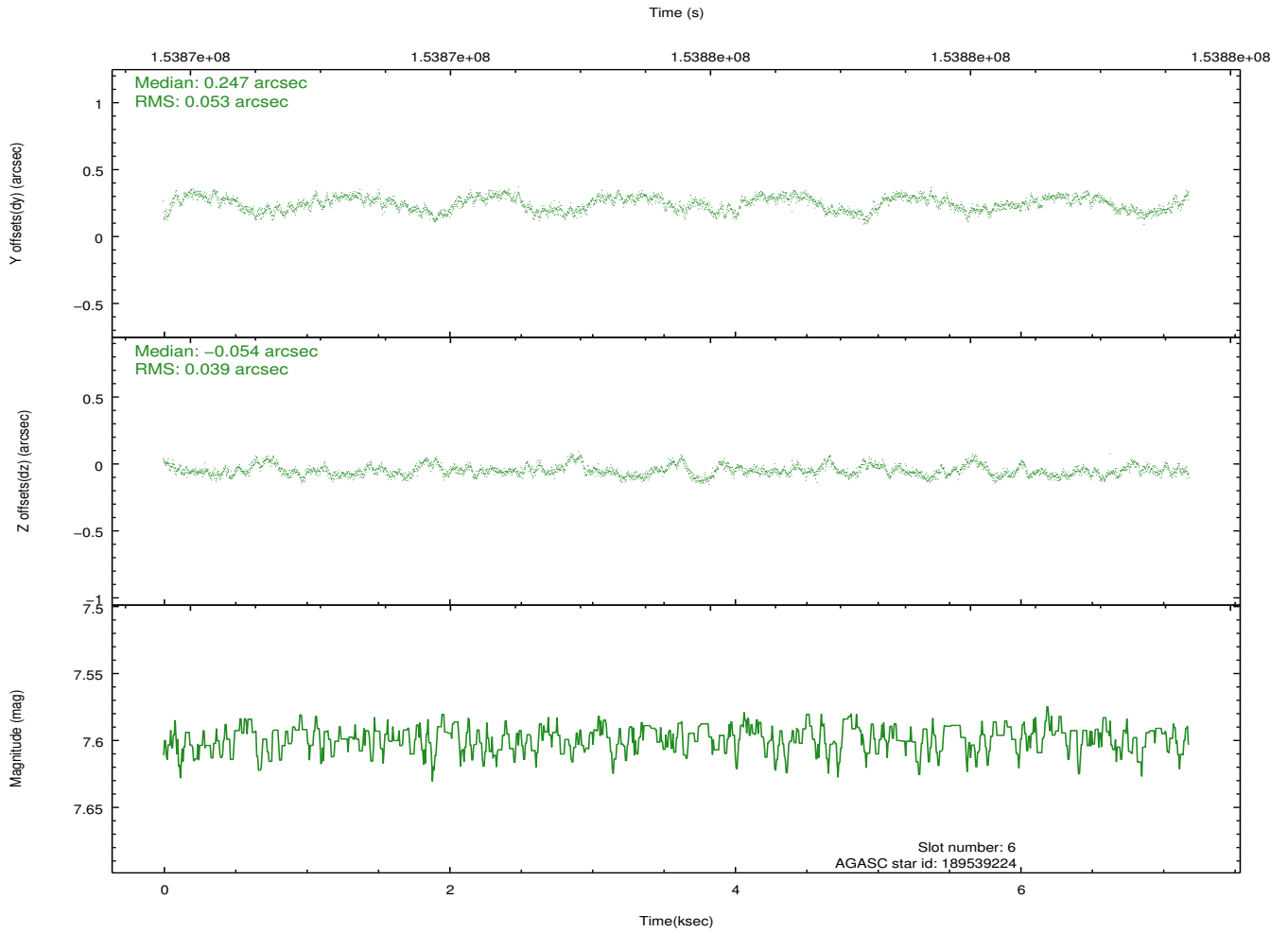
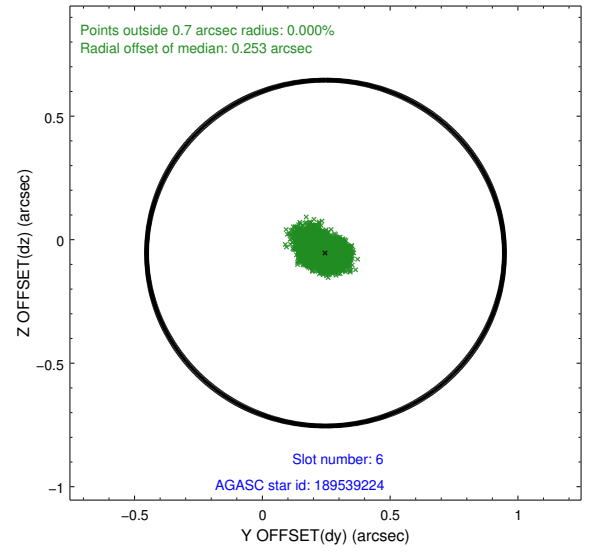
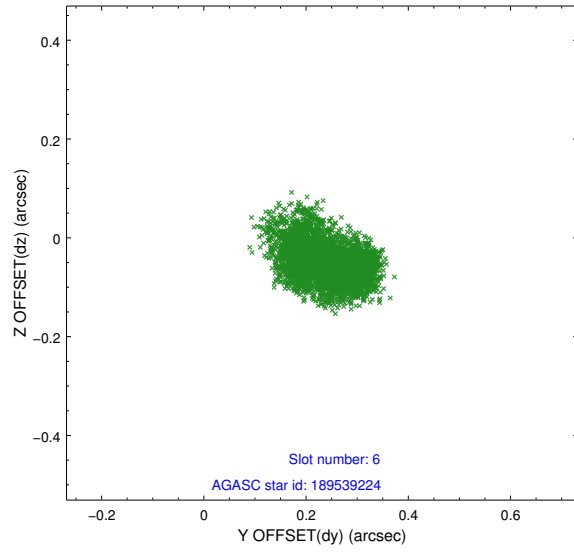
2.4.1 Slot 3



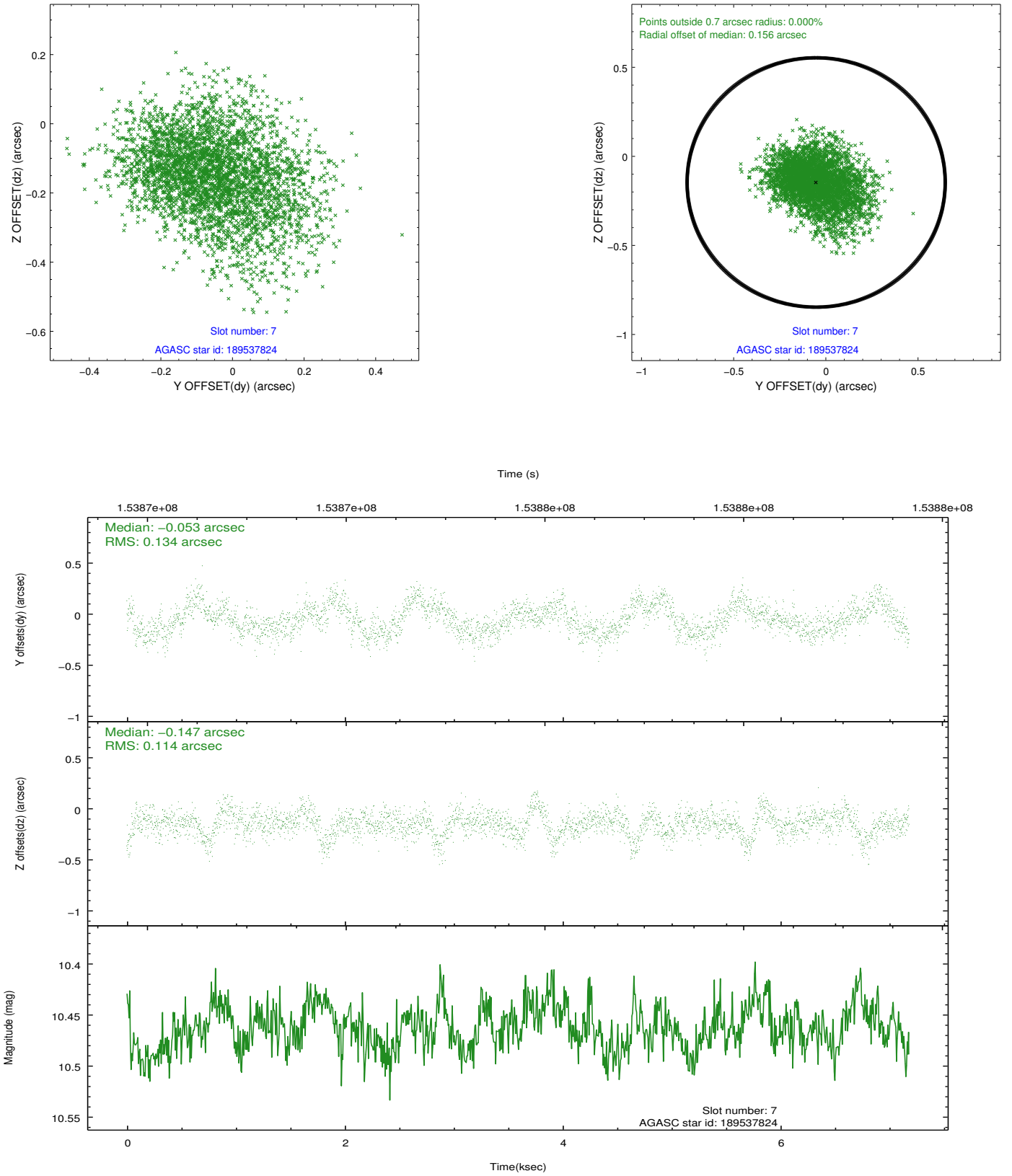
2.4.2 Slot 4



2.4.3 Slot 6

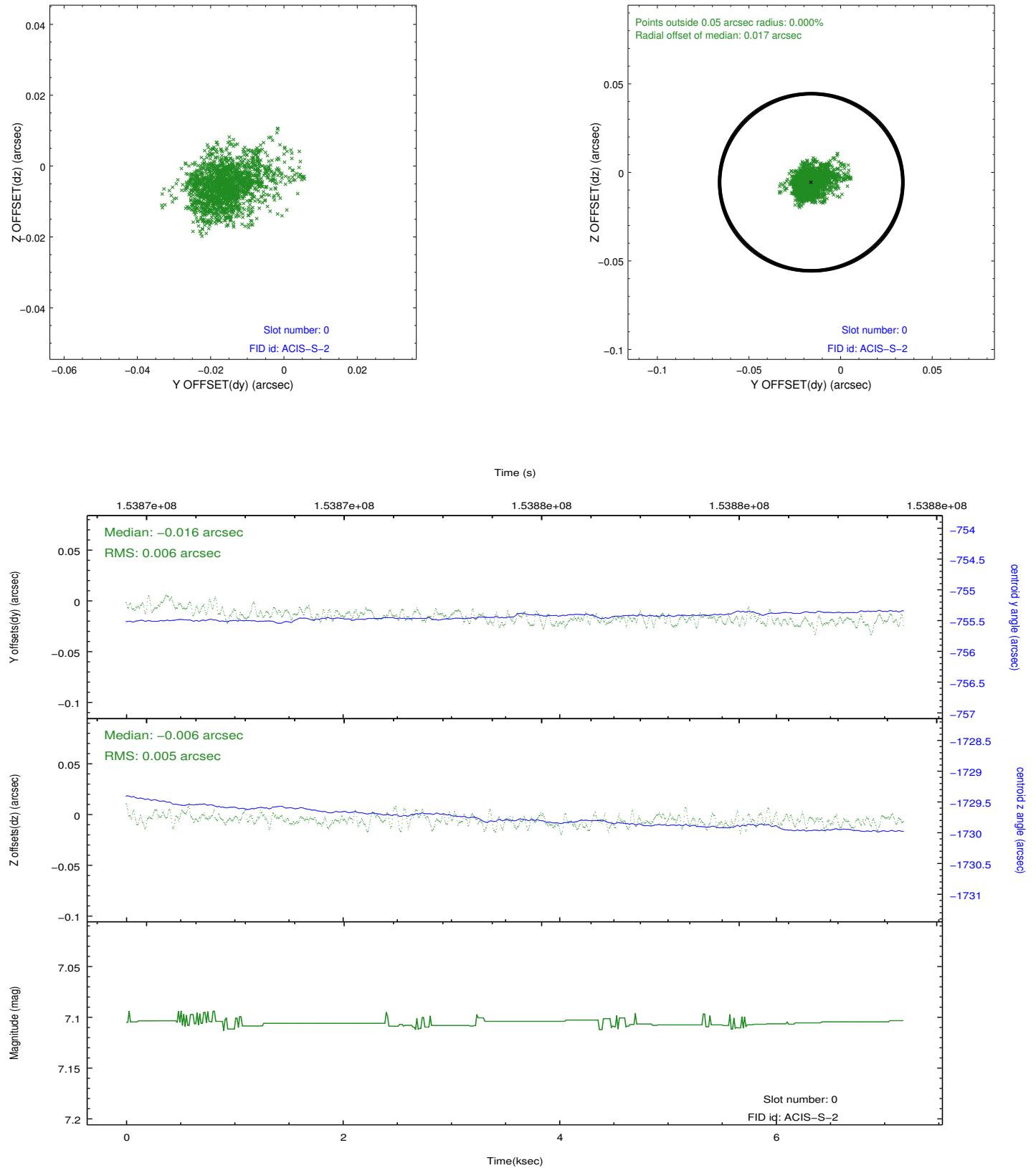


2.4.4 Slot 7

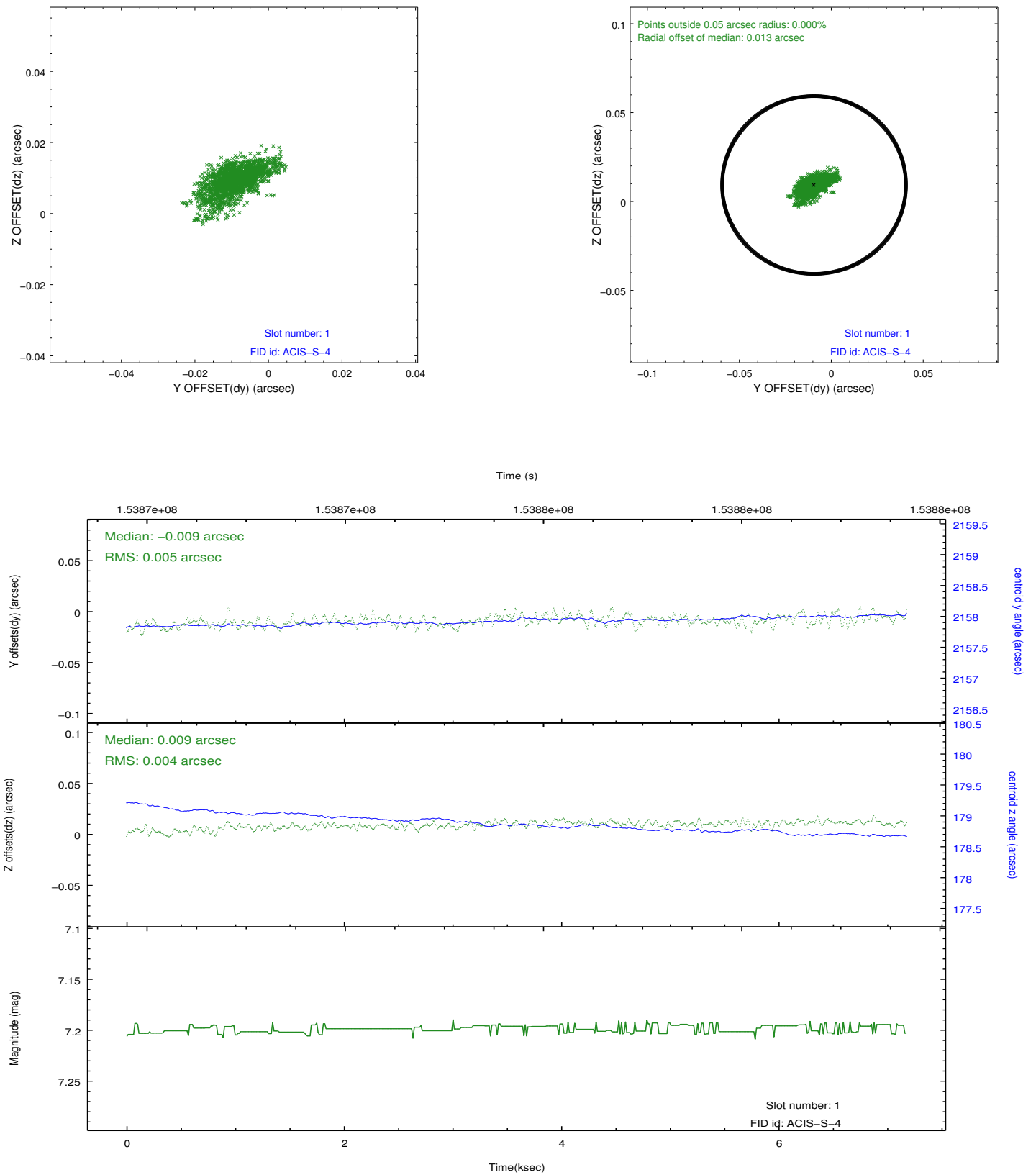


2.5 FID Slots

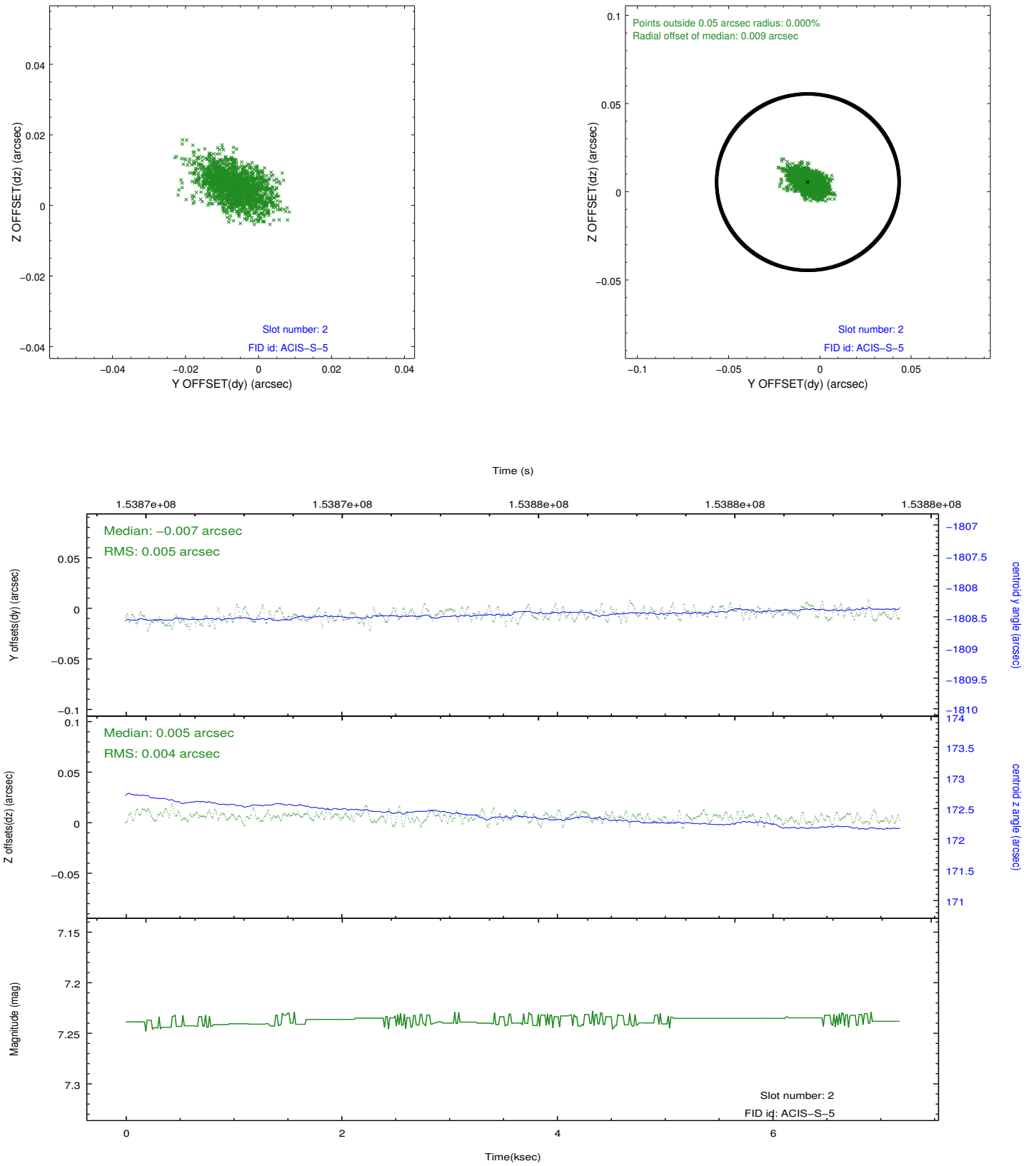
2.5.1 Slot 0



2.5.2 Slot 1



2.5.3 Slot 2



A Summary

A.1 Status

V&V Scientist	Beth Sundheim
V&V Date (YYYY-MM-DD)	2012.12.04
V&V Edition	1
V&V Disposition and Status	OK
V&V Charge Time	6.73

A.2 Comments

The guide star in slot 5 was removed from the aspect solution due to poor data quality. The aspect solution is improved by the removal of this star from the solution.