

V&V Reference Report

L2 ASCDS Version : 8.4.5

Observation 2967 - L2 Version 3
Chandra X-Ray Center

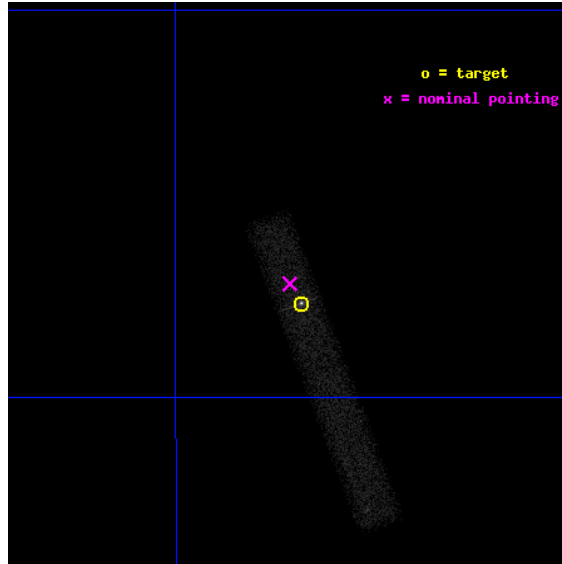
L2 Processing Date : Oct 11 2012

Contents

1	Front	2
2	OBI	3
2.1	OBI	3
2.1.1	Images	3
2.1.2	Bias	3
2.1.3	Parameters	4
2.1.4	Events	4
2.2	Compared Parameters	5
2.3	Aspect	6
2.4	Star Slots	9
2.4.1	Slot 3	9
2.4.2	Slot 4	10
2.4.3	Slot 5	11
2.4.4	Slot 6	12
2.4.5	Slot 7	13
2.5	FID Slots	14
2.5.1	Slot 0	14
2.5.2	Slot 1	15
2.5.3	Slot 2	16
A	Summary	17
A.1	Status	17
A.2	Comments	17

1 Front

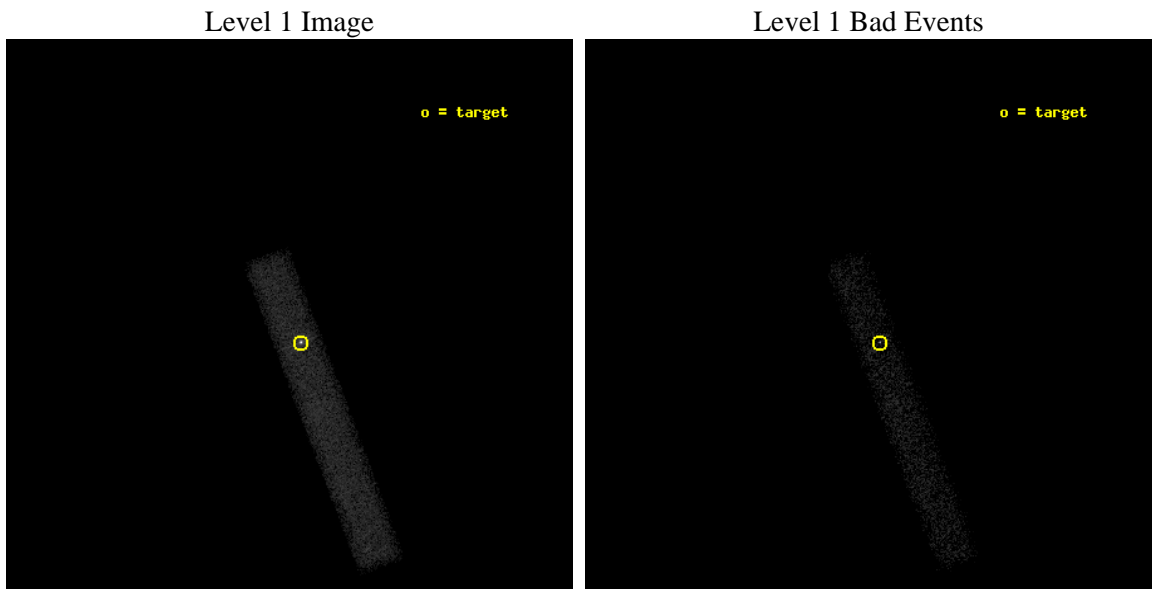
seq_num	700406	Sequence number
obs_id	2967	Observation id
title	J2310-437, AN X-RAY BRIGHT, RADIO-LOUD,OPTICALLY DULL GALAXY	Propo
observer	Dr. Stephen Murray	Principal investigator
object	J2310-437	Source name
dtcycle	0	
cycle	P	events from which exps? Prim/Second/Both
ra_targ	347.674167	Observer's specified target RA [deg]
dec_targ	-43.792861	Observer's specified target Dec [deg]
ra_nom	347.68109429292	Nominal RA [deg]
dec_nom	-43.784555506619	Nominal Dec [deg]
roll_nom	69.126065020792	Nominal Roll [deg]
revision	3	Processing version of data
ontime	29492.400439441	Sum of GTIs [s]
livetime	26748.050462036	Livetime [s]
ontime7	29492.400439441	Sum of GTIs [s]
l2events	28764	Number of level 2 events



2 OBI

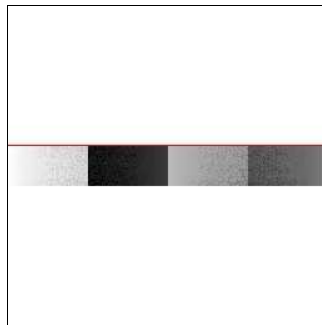
2.1 OBI

2.1.1 Images



2.1.2 Bias

Chip 7



2.1.3 Parameters

obi_num	0	Obi number	sched_exp_time	29000.000000	[s] Scheduled observation exposure time
ascdsver	8.4.5	Processing system revision	ontime	29492.400439441	Sum of GTIs [s]
caldsver	4.5.2	 	ontime7	29492.400439441	Sum of GTIs [s]
date	2012-10-11T21:18:18	Date and time of file creation	l1events	47031	Number of level 1 events
revision	3	Processing version of data			

2.1.4 Events

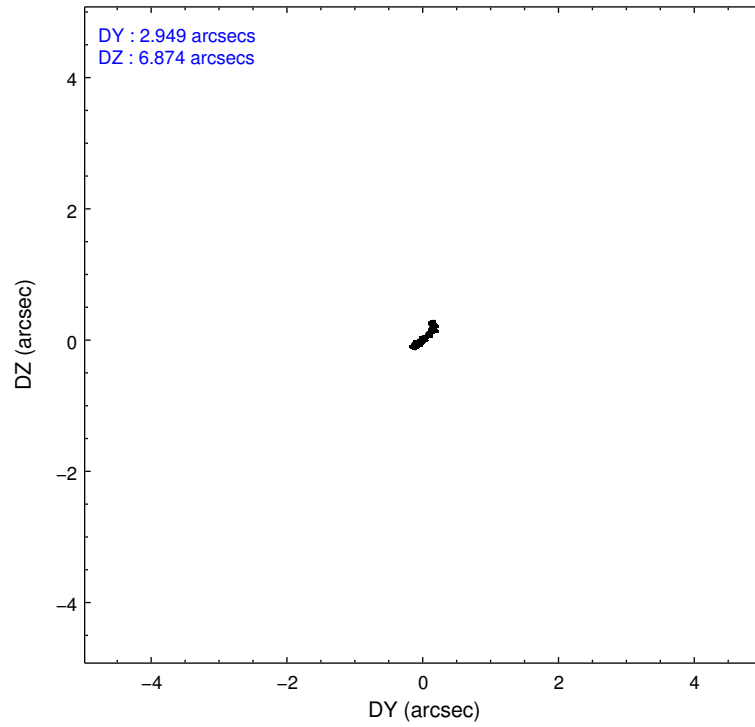
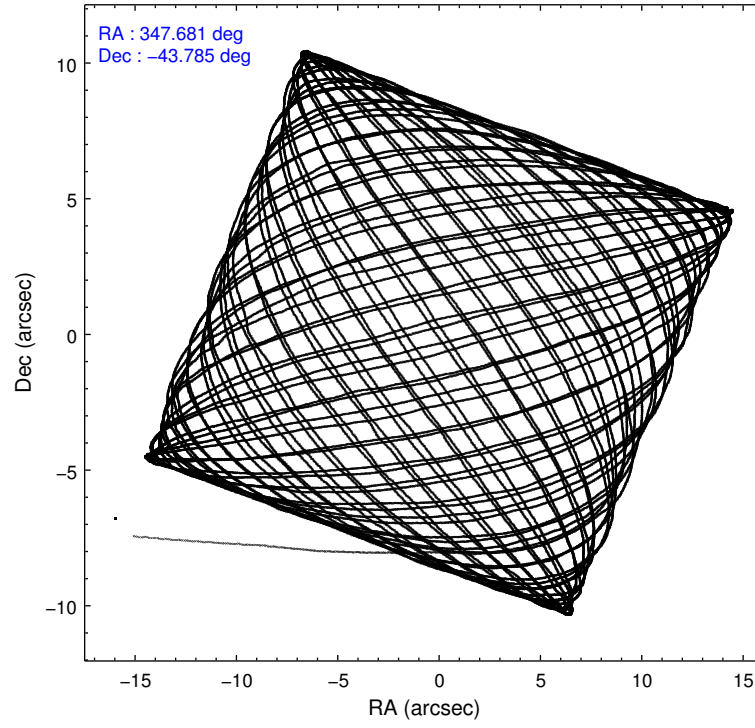
	ccd 7
level 1 events	47031
rejected events	17629
rejected %	37%

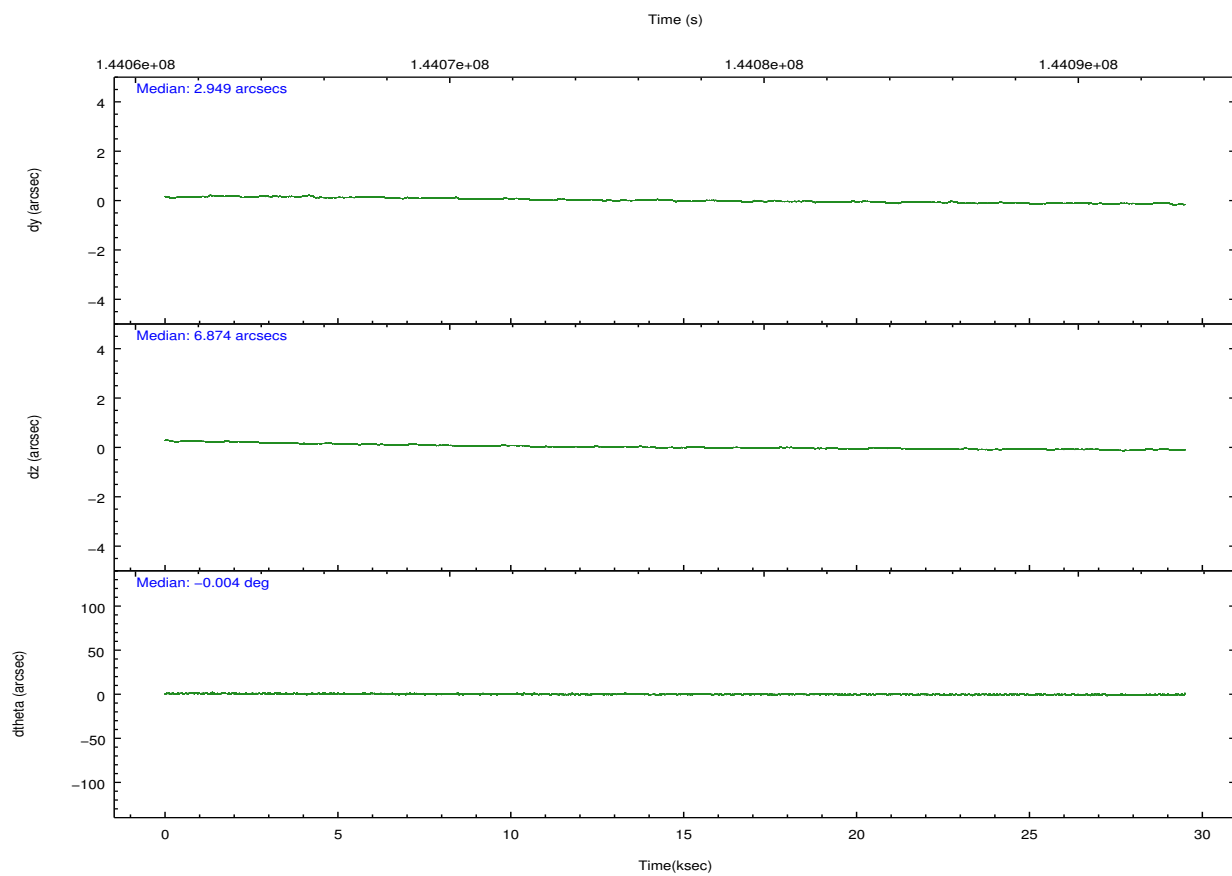
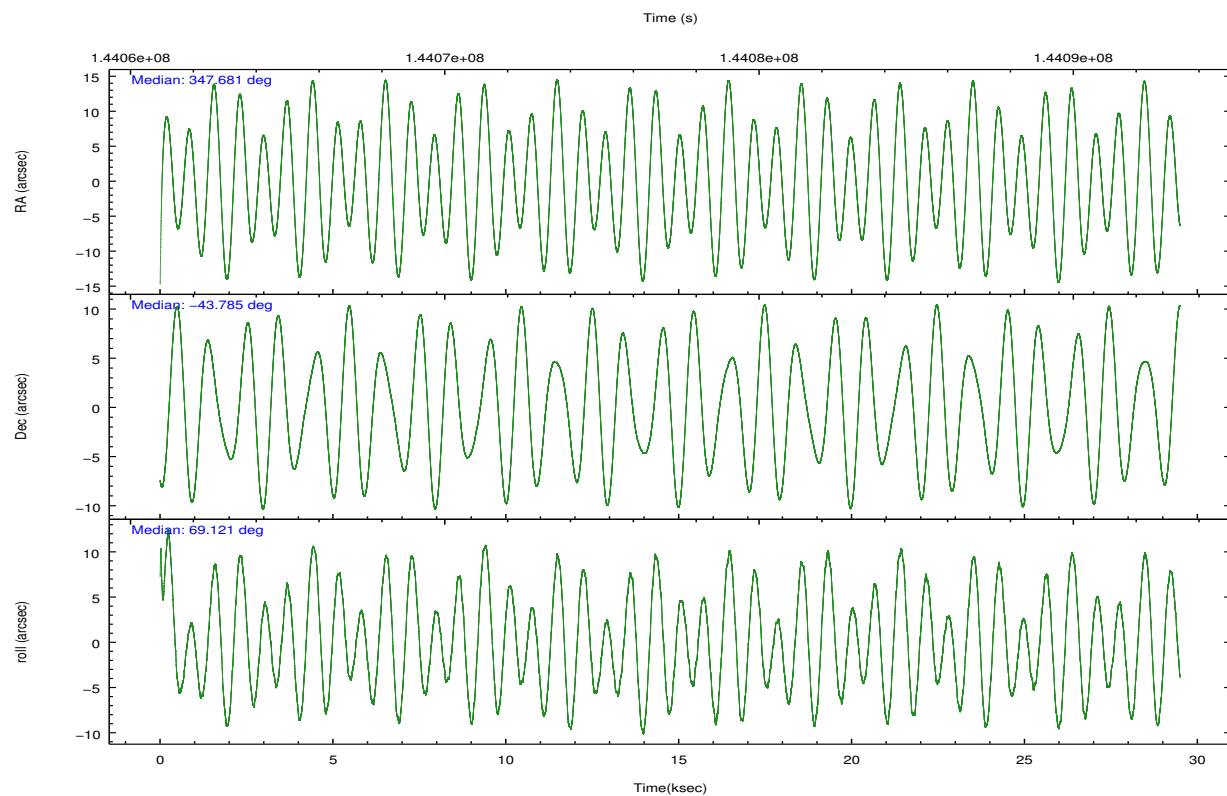
	ccd 7
grade 0 events	7008
	14%
grade 1 events	105
	0%
grade 2 events	6373
	13%
grade 3 events	3626
	7%
grade 4 events	3431
	7%
grade 5 events	3143
	6%
grade 6 events	9195
	19%
grade 7 events	14150
	30%

2.2 Compared Parameters

Parameter	Planned	Actual	Parameter	Planned	Actual
Instrument	ACIS	ACIS	Obspar format version number	7	7
Detector	ACIS-7	ACIS-7	Obspar file type	PREDICTED	ACTUAL
Grating	NONE	NONE	Obspar update status	NONE	UPDATED
Data mode	VFAINT	VFAINT	Number of optional ACIS chips dropped	0	0
Observation mode	POINTING	POINTING	On-chip summing requested	N	N
[deg] Pointing RA	347.687556	347.6810942929226	Subarray requested	CUSTOM	1/8
[deg] Pointing Dec	-43.811400	-43.78455550661905	Subarray start row	449	449
[deg] Pointing Roll	68.973902	69.12606502079188	Subarray row count	128	128
[mm] SIM focus pos	-0.684267	-0.6828225247311905	Alternating exposures requested	N	N
[mm] SIM defocus	0	0.001444936568705701	[s] Primary exposure time	0.000000	0.4
[mm] SIM translation stage pos	-190.132523	-190.1400660498719			
[mm] SIM translation stage offset	0	0.00754346686406393			
[s] Observation start time (MET)	144062914.184000	144061794.41152			
Observation start date	2002-07-26T09:27:30	2002-07-26T09:09:54			
[s] Observation end time (MET)	144091914.184000	144092608.98779			
Observation end date	2002-07-26T17:30:50	2002-07-26T17:43:28			
Read mode	TIMED	TIMED			

2.3 Aspect



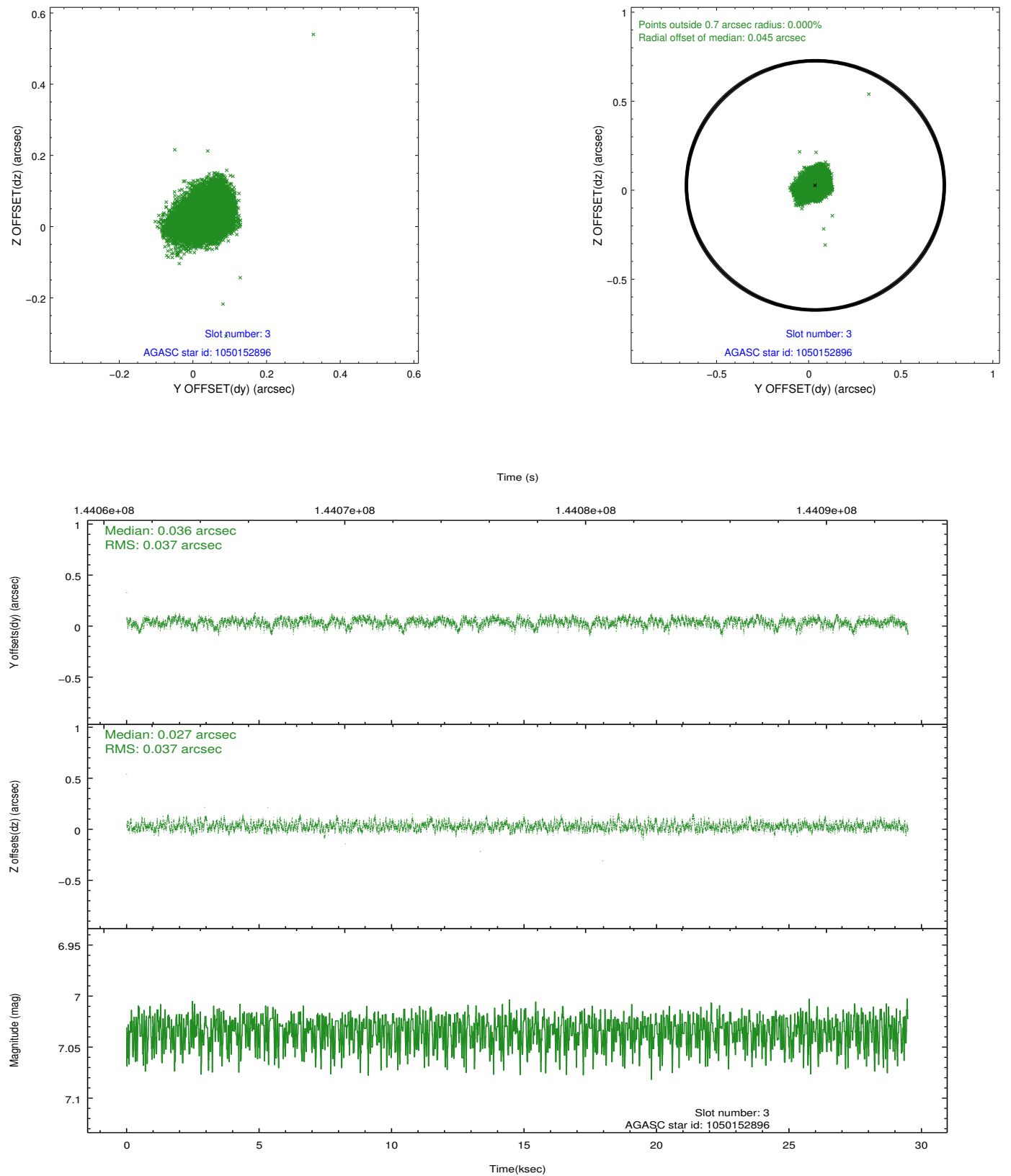


Slot Statistics

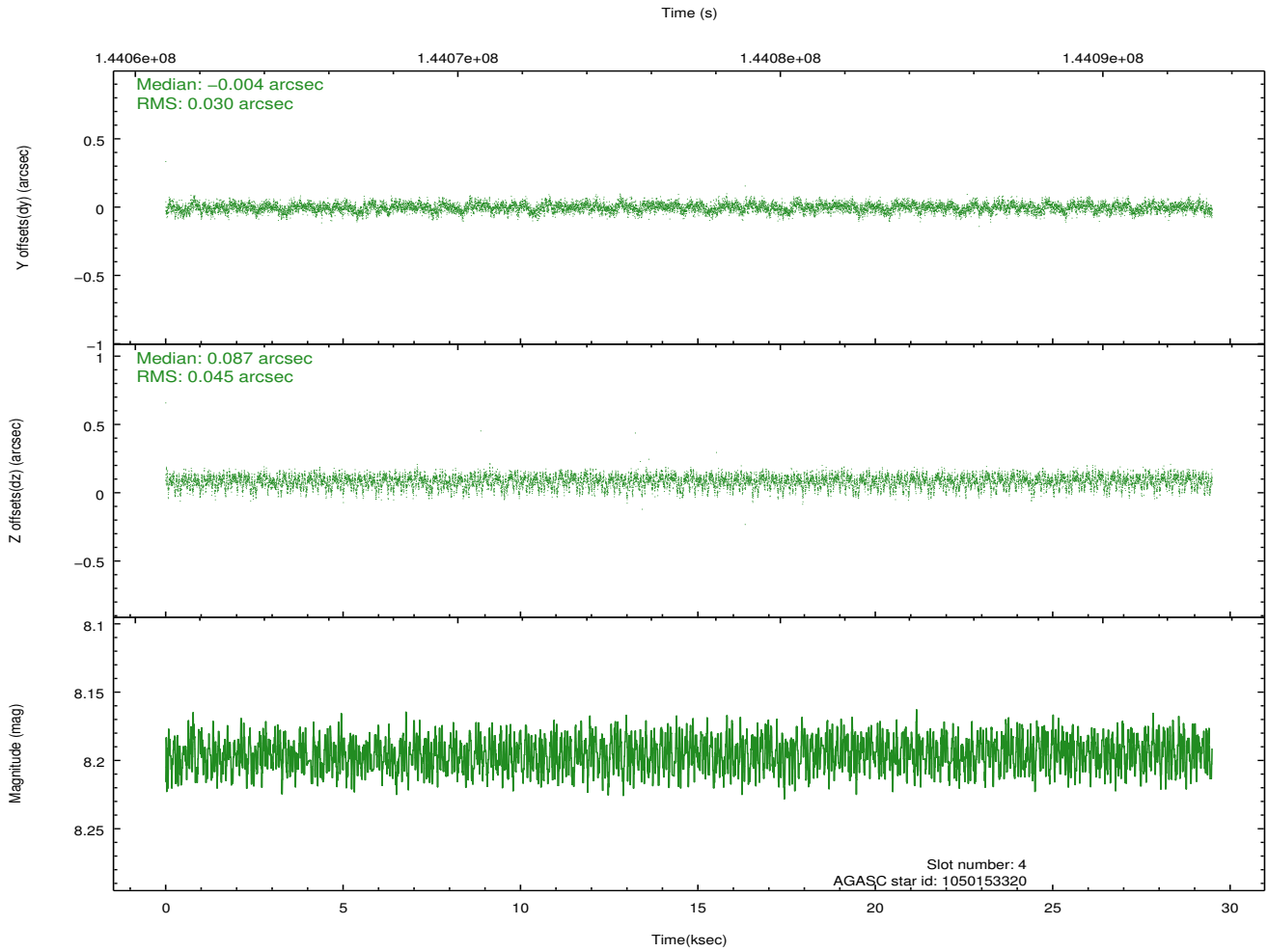
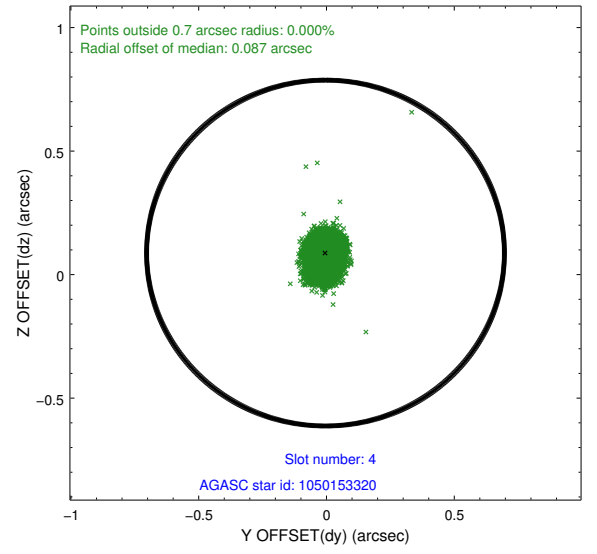
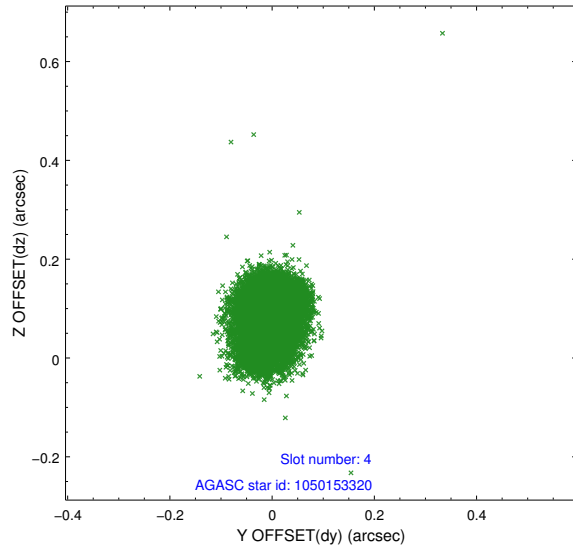
slot	status	id	mag	n_pts	med_dy	med_dz	dr1	dr2	ra	dec	mean_y	mean_z
0	FID	ACIS-S-2	7.12	7194	-0.021	0.007	0.008	0.013	0.000000	0.000000	-755.61	-1728.06
1	FID	ACIS-S-4	7.20	7193	-0.011	0.008	0.006	0.010	0.000000	0.000000	2157.63	180.36
2	FID	ACIS-S-5	7.24	7194	0.001	-0.006	0.009	0.014	0.000000	0.000000	-1808.34	174.08
3	GUIDE	1050152896	7.03	14388	0.036	0.027	0.055	0.091	348.012597	-43.987770	-291.72	-1014.06
4	GUIDE	1050153320	8.20	14387	-0.004	0.087	0.056	0.095	348.248017	-44.061220	-323.40	-1677.64
5	GUIDE	1050150016	9.26	14382	0.022	-0.104	0.084	0.133	346.895537	-43.920404	-1112.25	1772.57
6	GUIDE	1050153488	9.20	14381	-0.036	-0.034	0.072	0.117	347.145599	-43.014711	2160.96	2359.57
7	GUIDE	1050150808	9.96	14380	-0.020	0.025	0.113	0.179	348.126587	-44.416555	-1630.57	-1836.52

2.4 Star Slots

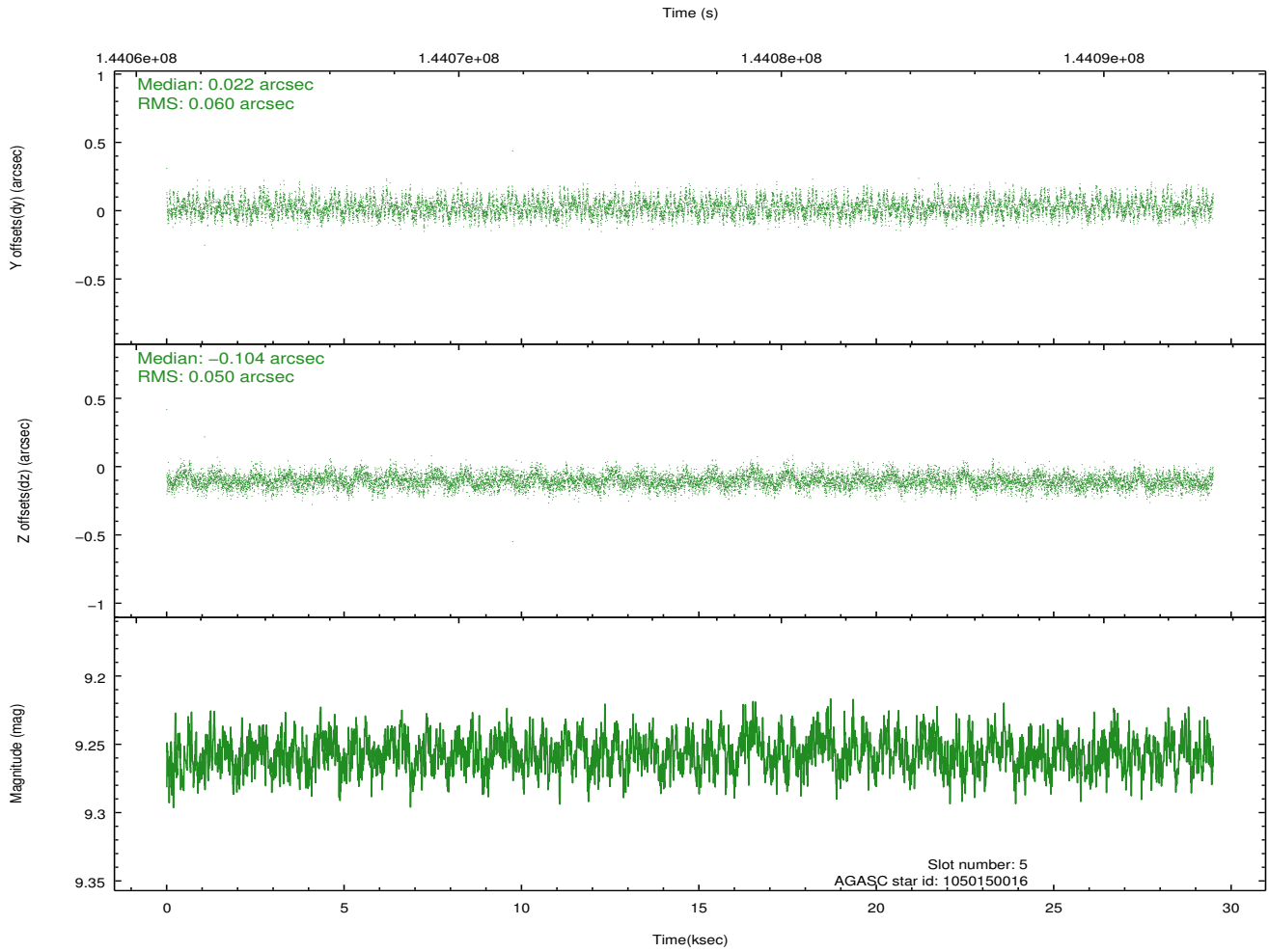
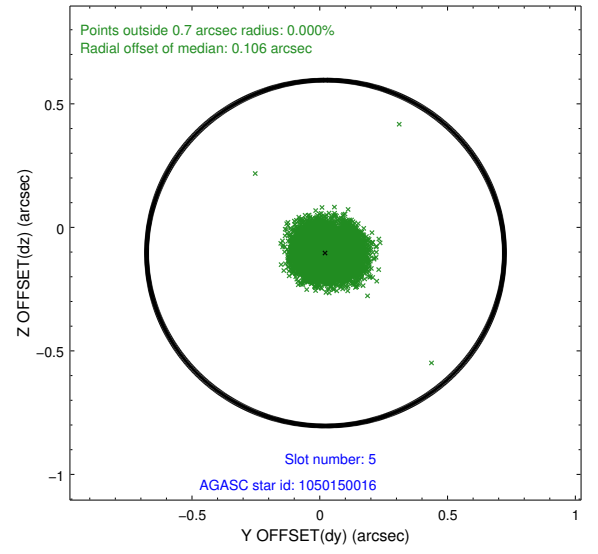
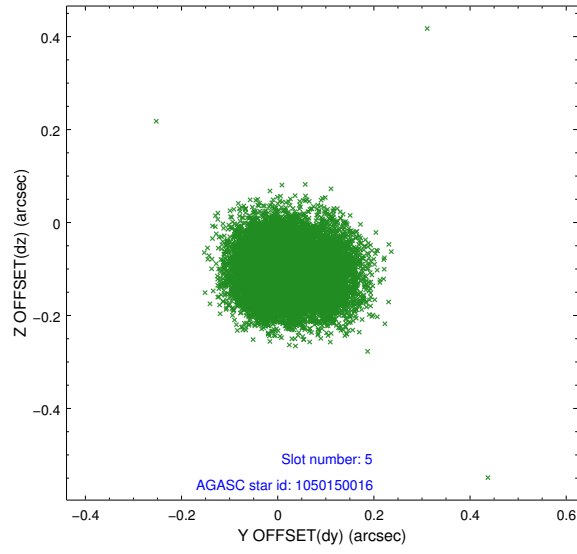
2.4.1 Slot 3



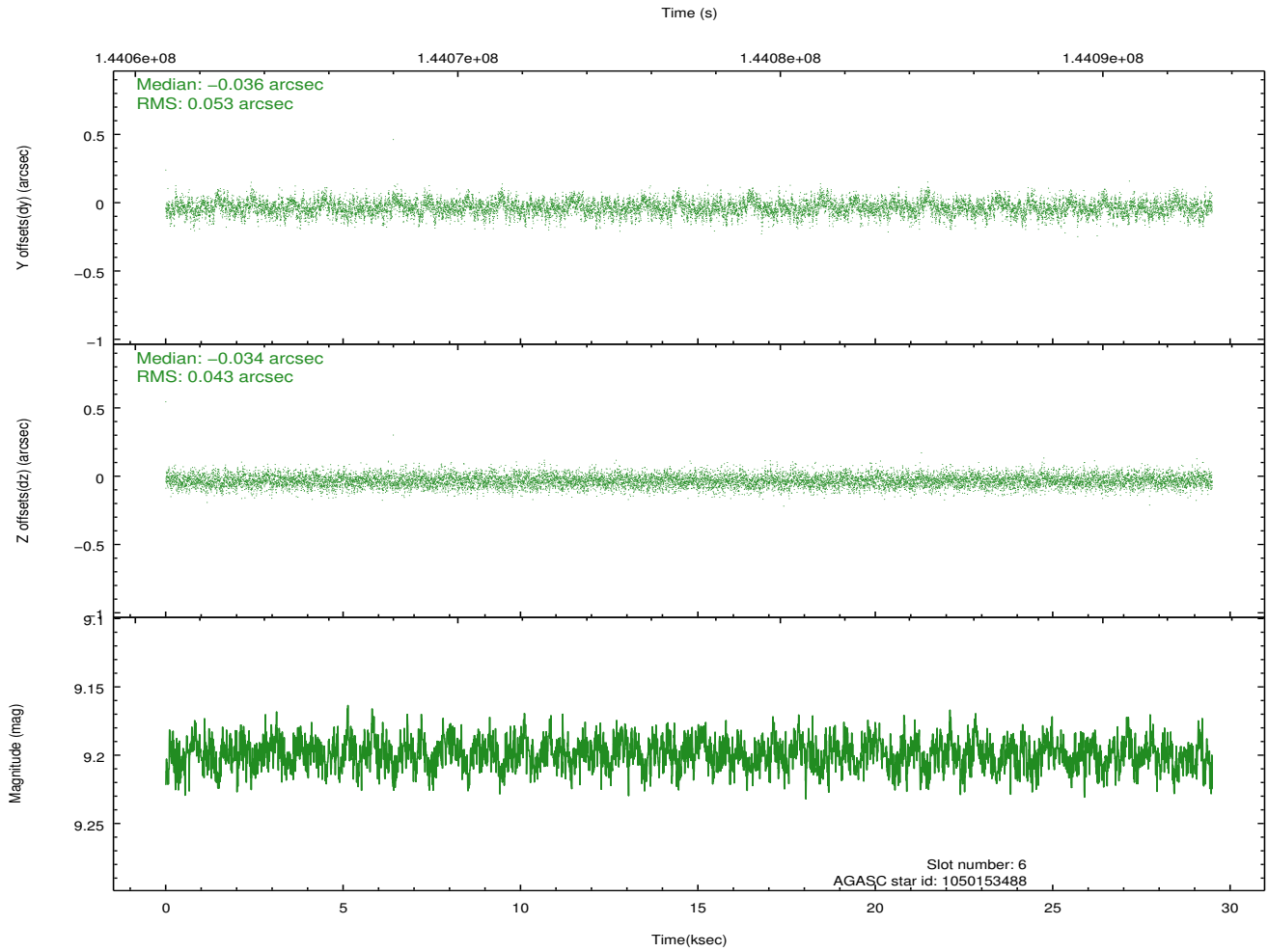
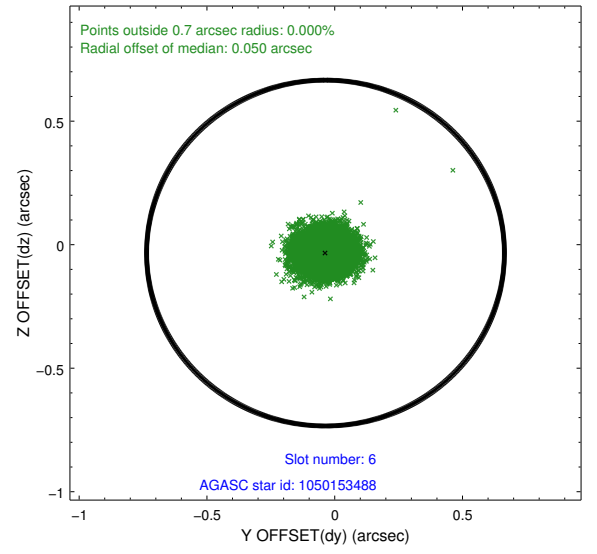
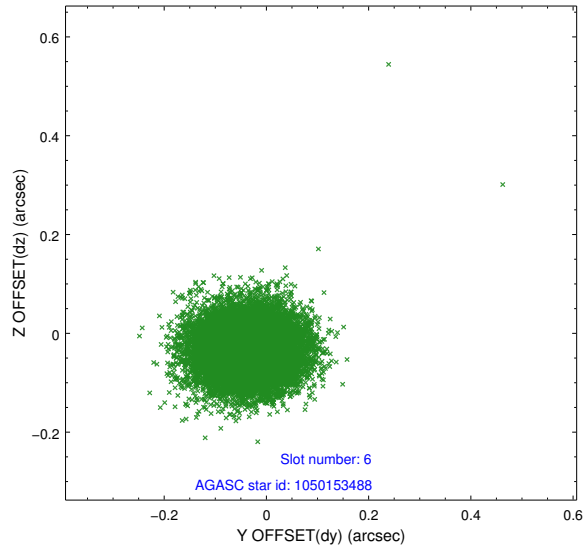
2.4.2 Slot 4



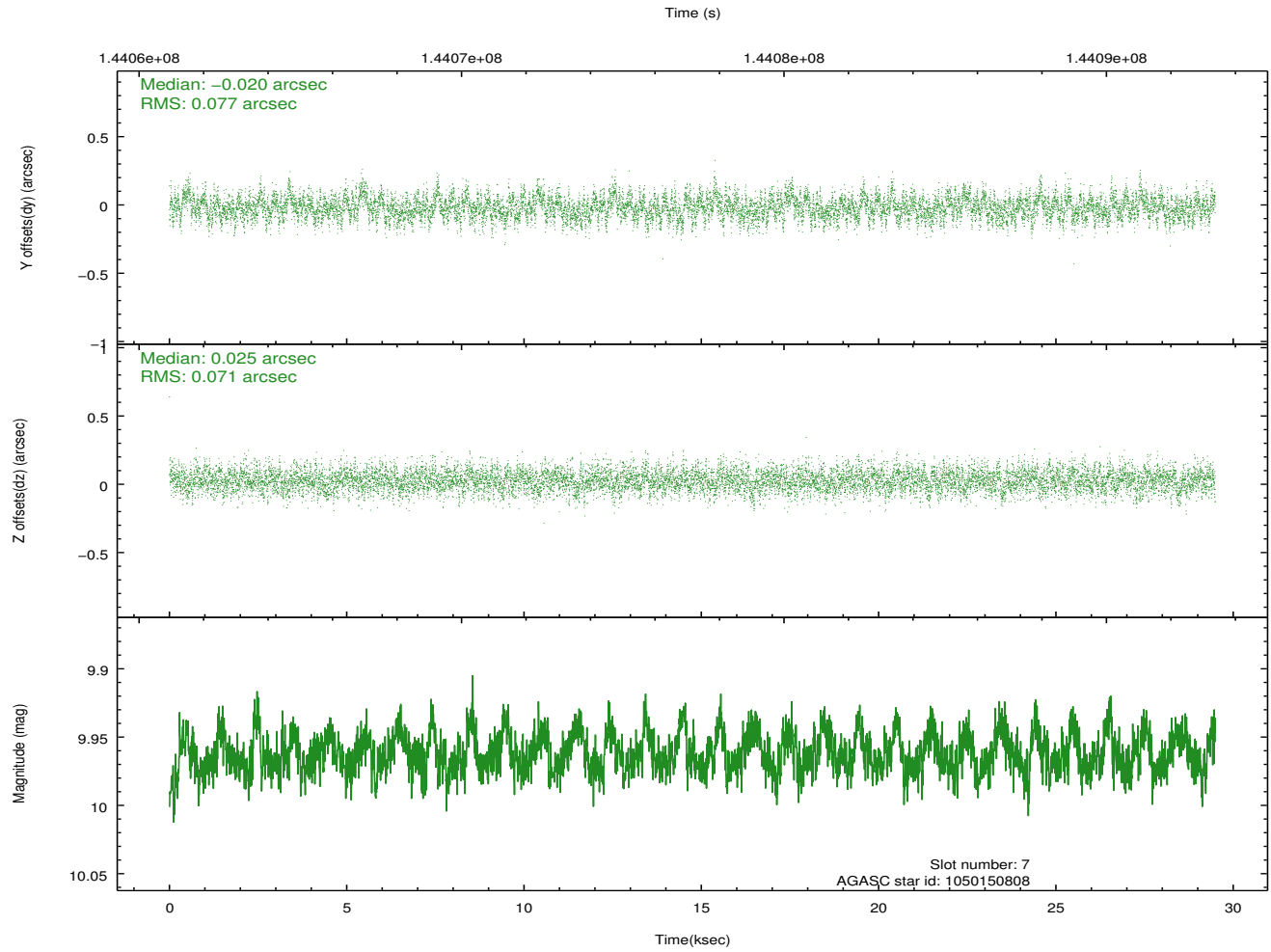
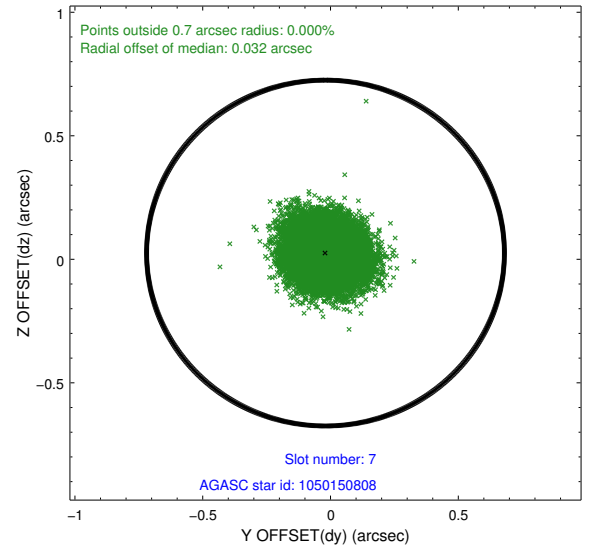
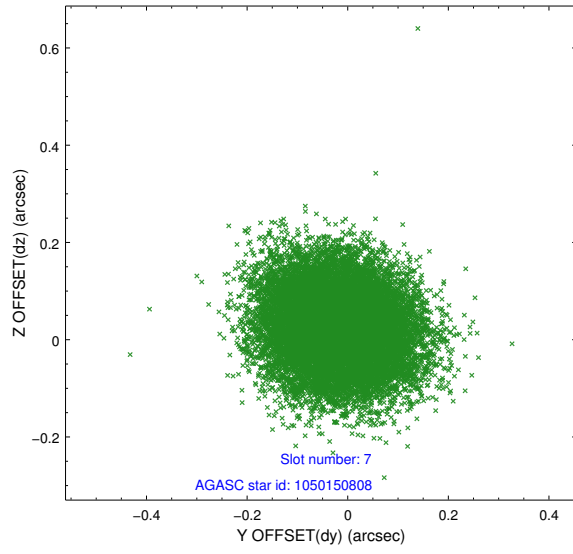
2.4.3 Slot 5



2.4.4 Slot 6

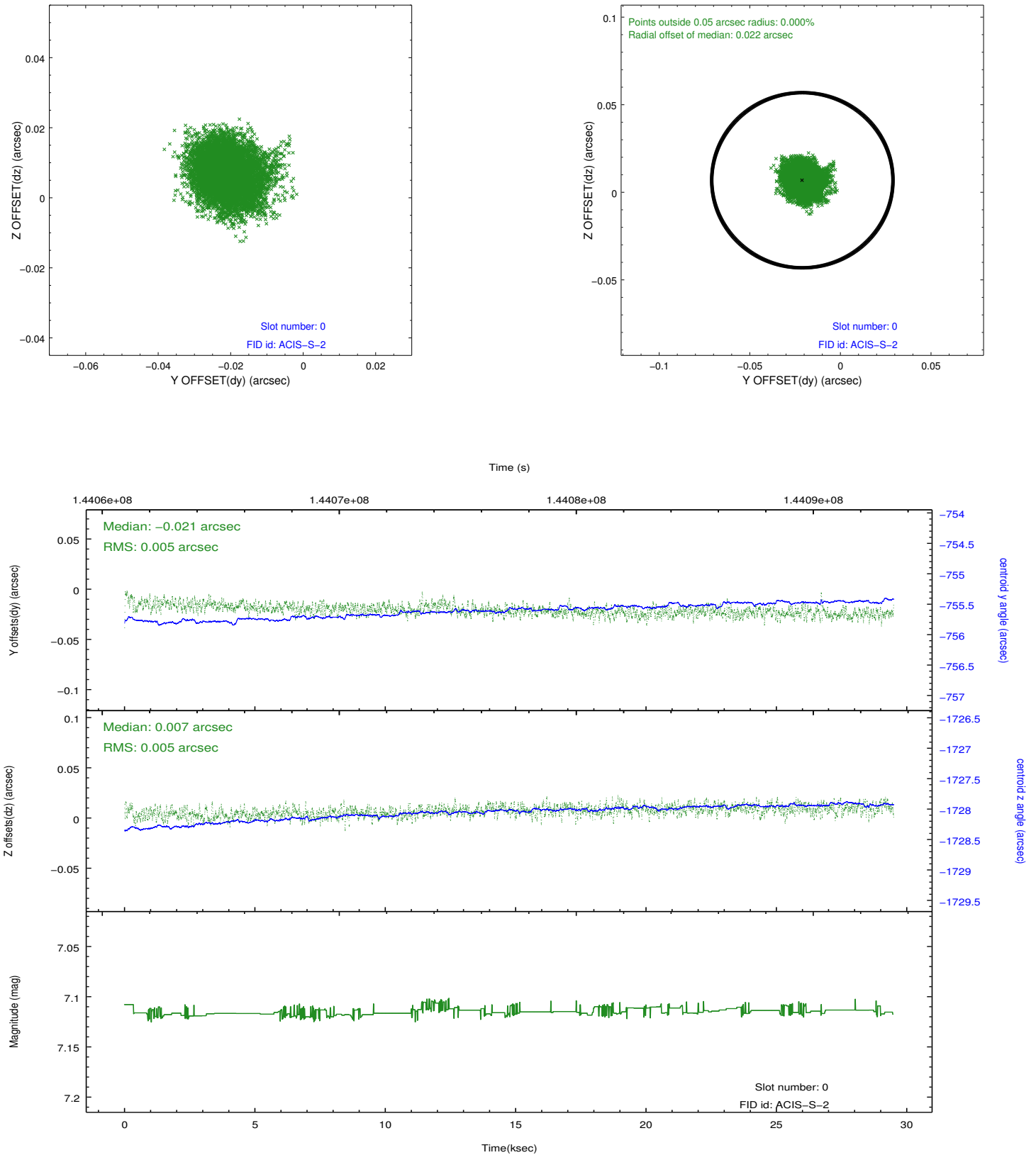


2.4.5 Slot 7

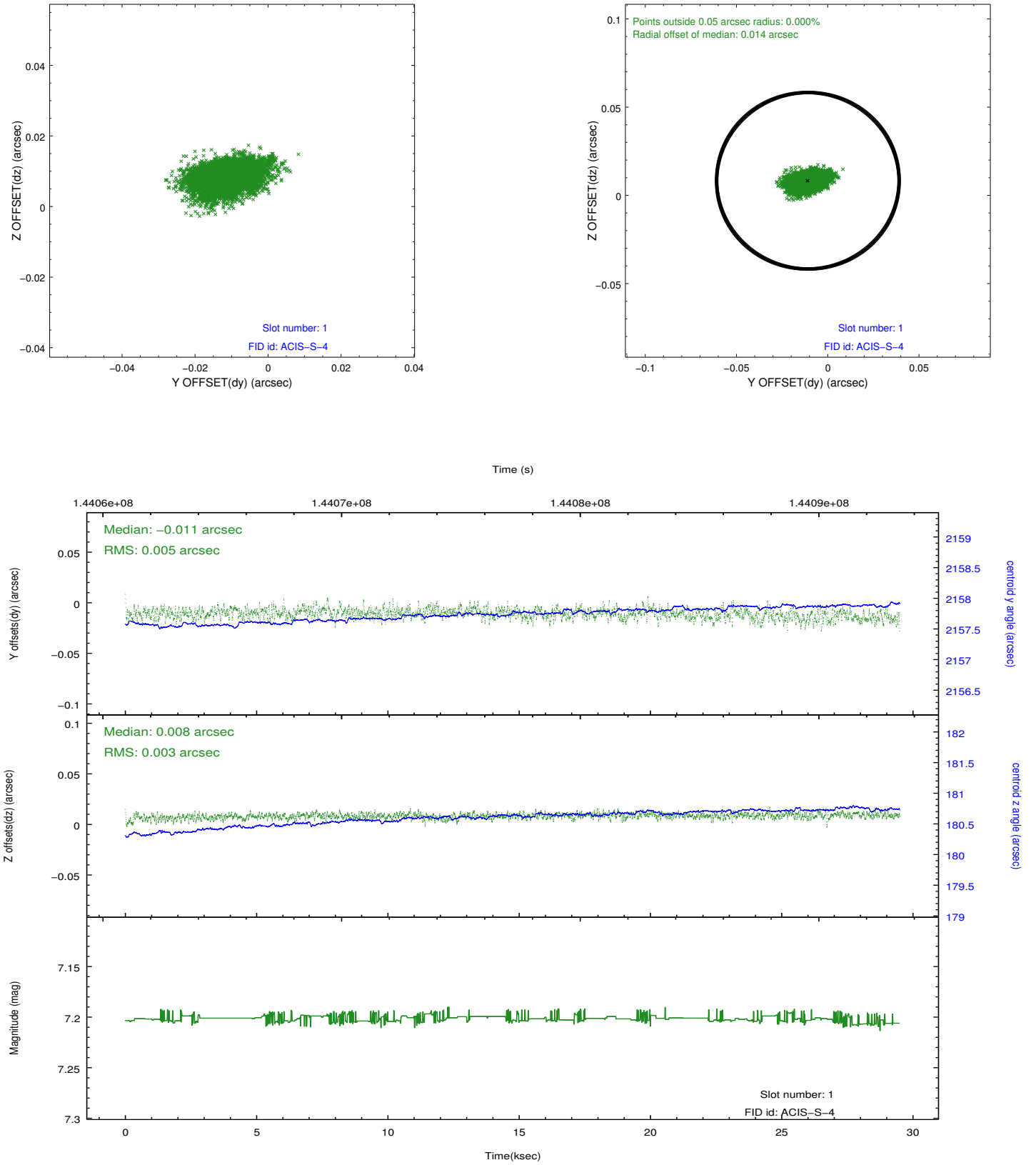


2.5 FID Slots

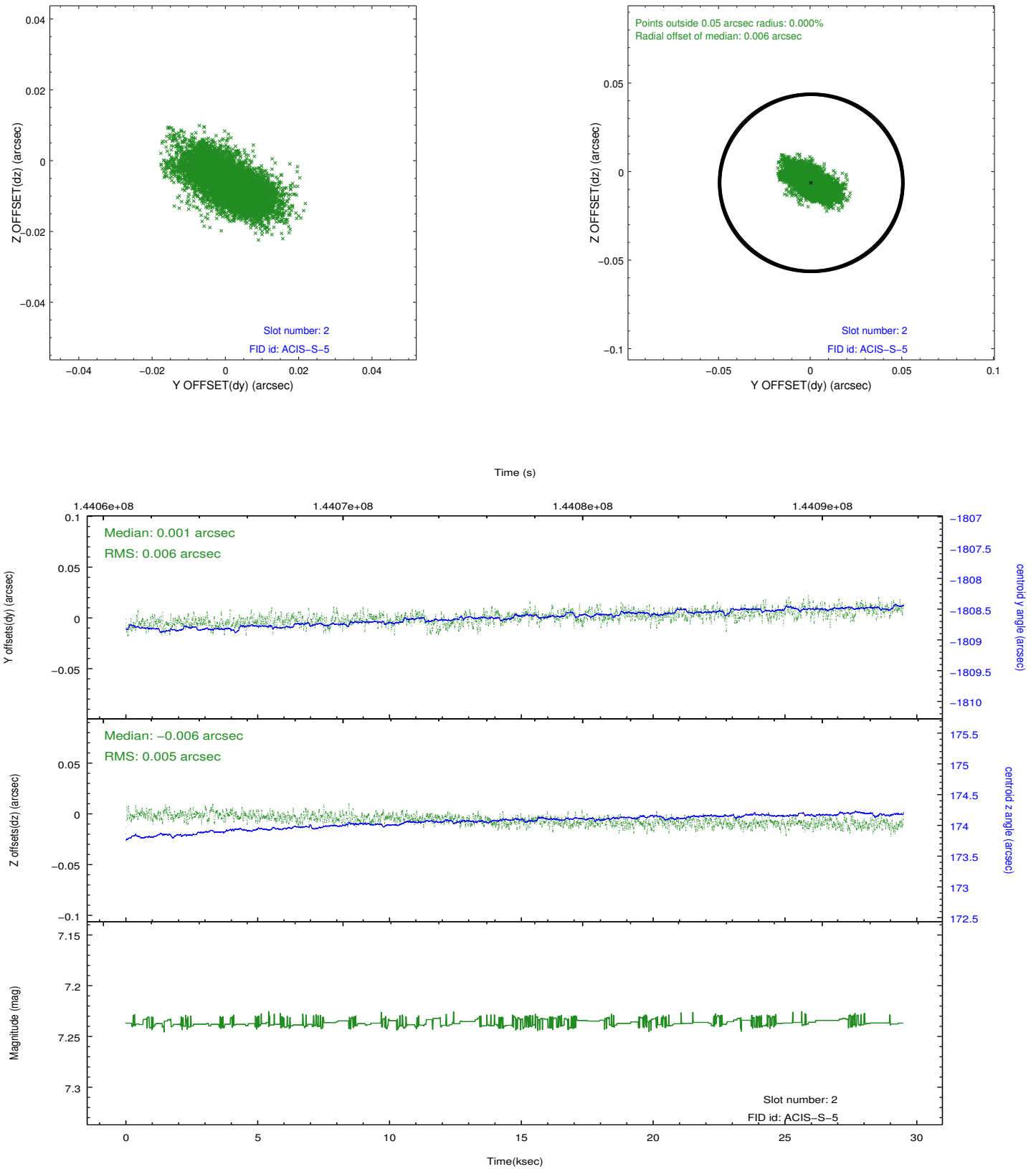
2.5.1 Slot 0



2.5.2 Slot 1



2.5.3 Slot 2



A Summary

A.1 Status

V&V Scientist	Jen Lauer
V&V Date (YYYY-MM-DD)	2012.10.22
V&V Edition	1
V&V Disposition and Status	OK
V&V Charge Time	29.492

A.2 Comments