

V&V Reference Report

L2 ASCDS Version : 8.4.5

Observation 2952 - L2 Version 3
Chandra X-Ray Center

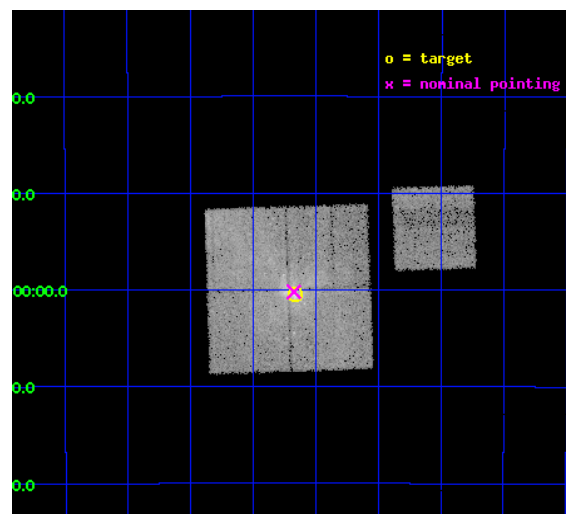
L2 Processing Date : Oct 4 2012

Contents

1	Front	2
2	OBI	3
2.1	OBI	3
2.1.1	Images	3
2.1.2	Bias	3
2.1.3	Parameters	4
2.1.4	Events	4
2.2	Compared Parameters	5
2.3	Aspect	6
2.4	Star Slots	9
2.4.1	Slot 3	9
2.4.2	Slot 4	10
2.4.3	Slot 5	11
2.4.4	Slot 6	12
2.4.5	Slot 7	13
2.5	FID Slots	14
2.5.1	Slot 0	14
2.5.2	Slot 1	15
2.5.3	Slot 2	16
A	Summary	17
A.1	Status	17
A.2	Comments	17

1 Front

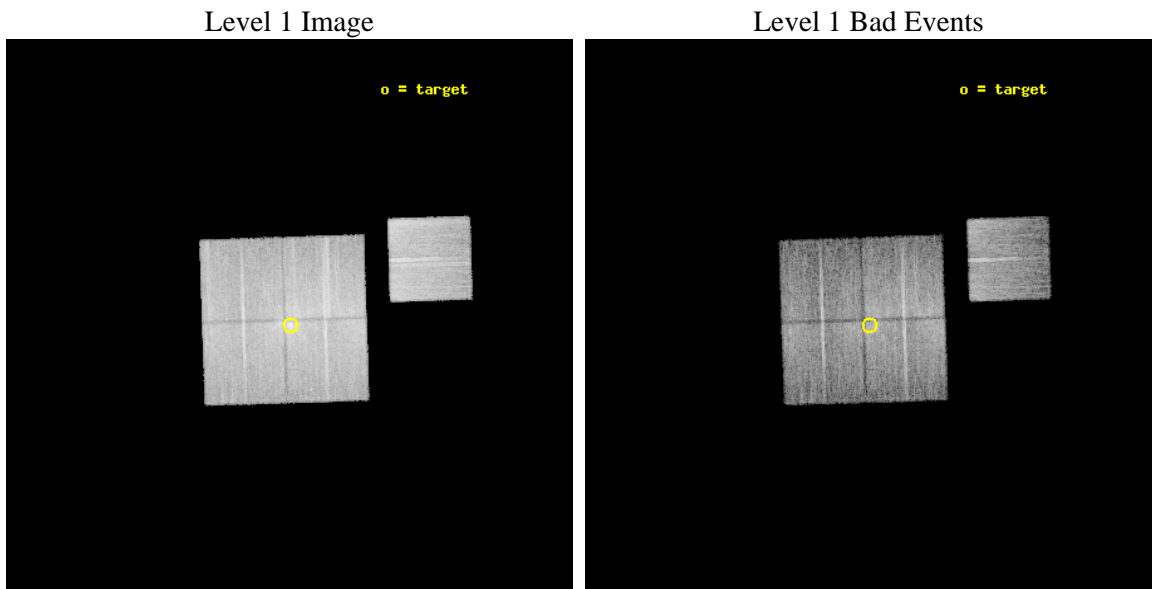
seq_num	600289	Sequence number
obs_id	2952	Observation id
title	SIMULTANEOUS X-RAY/RADIO MONITORING OF SAGITTARIUS A*	Proposal tit
observer	Professor Gordon Garmire	Principal investigator
object	SGR A*	Source name
dtcycle	0	
cycle	P	events from which exps? Prim/Second/Both
ra_targ	266.416667	Observer's specified target RA [deg]
dec_targ	-29.007778	Observer's specified target Dec [deg]
ra_nom	266.4189124058	Nominal RA [deg]
dec_nom	-29.00353358592	Nominal Dec [deg]
roll_nom	88.168071275189	Nominal Roll [deg]
revision	3	Processing version of data
ontime	12012.499976903	Sum of GTIs [s]
livetime	11855.547821231	Livetime [s]
ontime0	12012.499976903	Sum of GTIs [s]
ontime1	12012.499976903	Sum of GTIs [s]
ontime2	12012.499976903	Sum of GTIs [s]
ontime3	12012.499976903	Sum of GTIs [s]
ontime6	12009.359016642	Sum of GTIs [s]
l2events	112350	Number of level 2 events



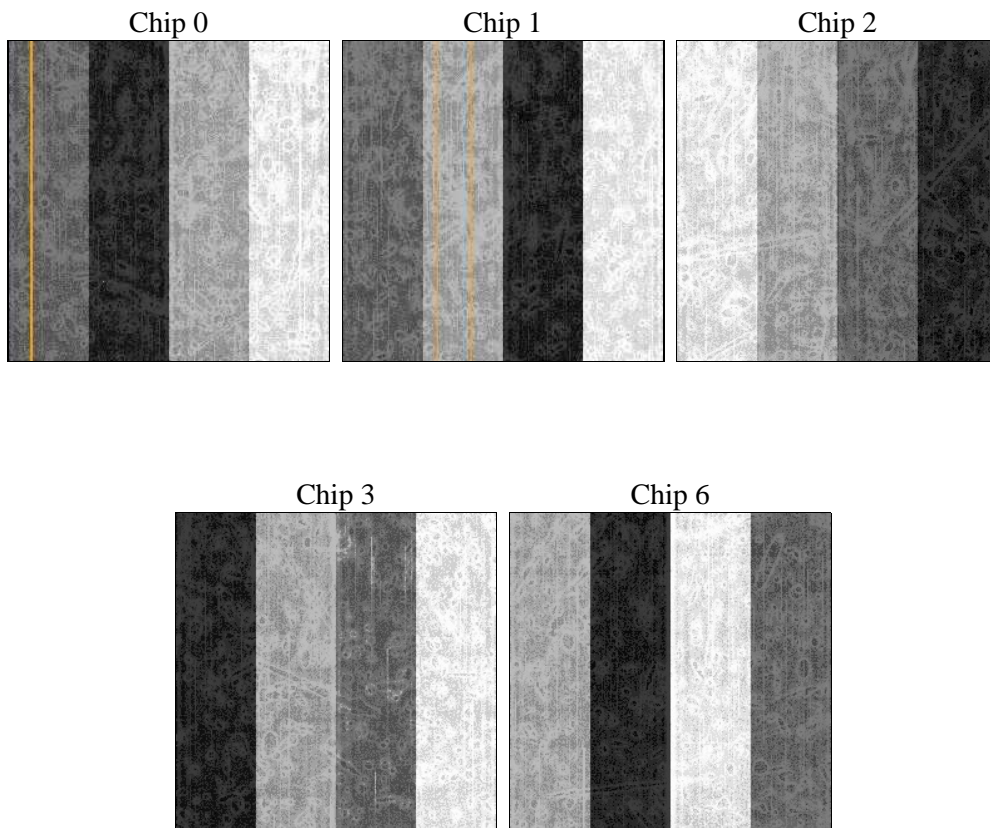
2 OBI

2.1 OBI

2.1.1 Images



2.1.2 Bias



2.1.3 Parameters

obi_num	1	Obi number	sched_exp_time	11900.000000	[s] Scheduled observation exposure time
ascdsver	8.4.5	Processing system revision	ontime	12012.499976903	Sum of GTIs [s]
caldsver	4.5.2	 	ontime0	12012.499976903	Sum of GTIs [s]
date	2012-10-04T11:55:00	Date and time of file creation	ontime1	12012.499976903	Sum of GTIs [s]
revision	3	Processing version of data	ontime2	12012.499976903	Sum of GTIs [s]
			ontime3	12012.499976903	Sum of GTIs [s]
			ontime6	12009.359016642	Sum of GTIs [s]
			l1events	721778	Number of level 1 events

2.1.4 Events

	ccd 0	ccd 1	ccd 2	ccd 3	ccd 6
level 1 events	130191	133064	160958	150216	147349
rejected events	92327	105596	128365	122372	126377
rejected %	70%	79%	79%	81%	85%

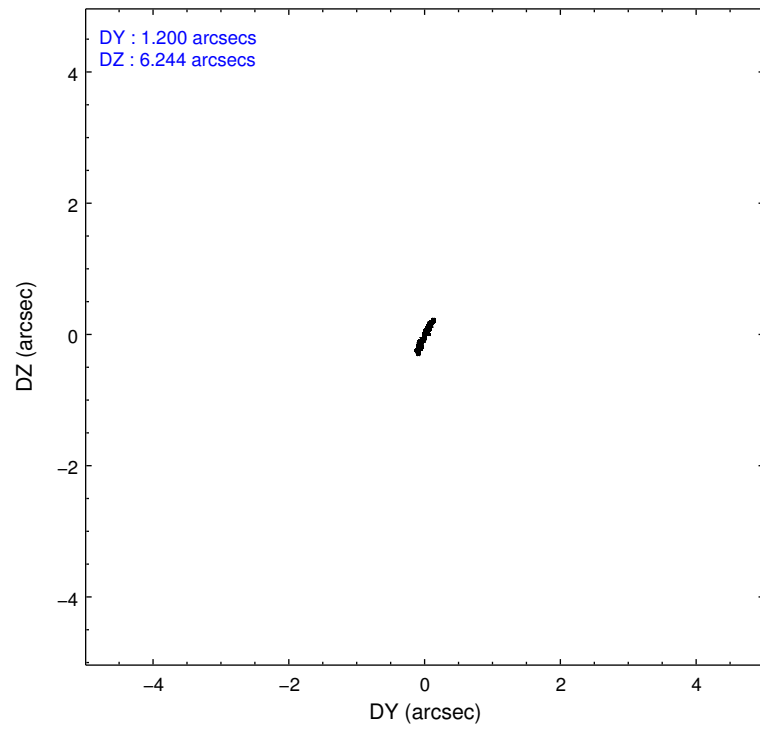
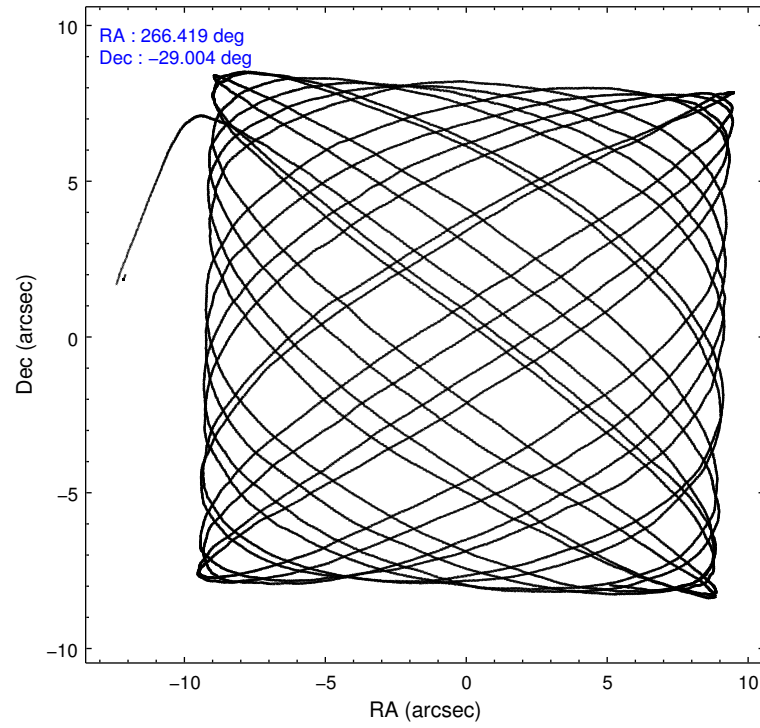
	ccd 0	ccd 1	ccd 2	ccd 3	ccd 6
grade 0 events	20079	13348	15888	13701	8733
	15%	10%	9%	9%	5%
grade 1 events	129	105	111	100	69
	0%	0%	0%	0%	0%
grade 2 events	9756	6826	9264	6551	7007
	7%	5%	5%	4%	4%
grade 3 events	1765	1489	1247	1448	998
	1%	1%	0%	0%	0%
grade 4 events	1753	1463	2008	1546	972
	1%	1%	1%	1%	0%
grade 5 events	2836	2980	2921	2988	3215
	2%	2%	1%	1%	2%
grade 6 events	4526	4352	4196	4606	3268
	3%	3%	2%	3%	2%
grade 7 events	89347	102501	125323	119276	123087
	68%	77%	77%	79%	83%

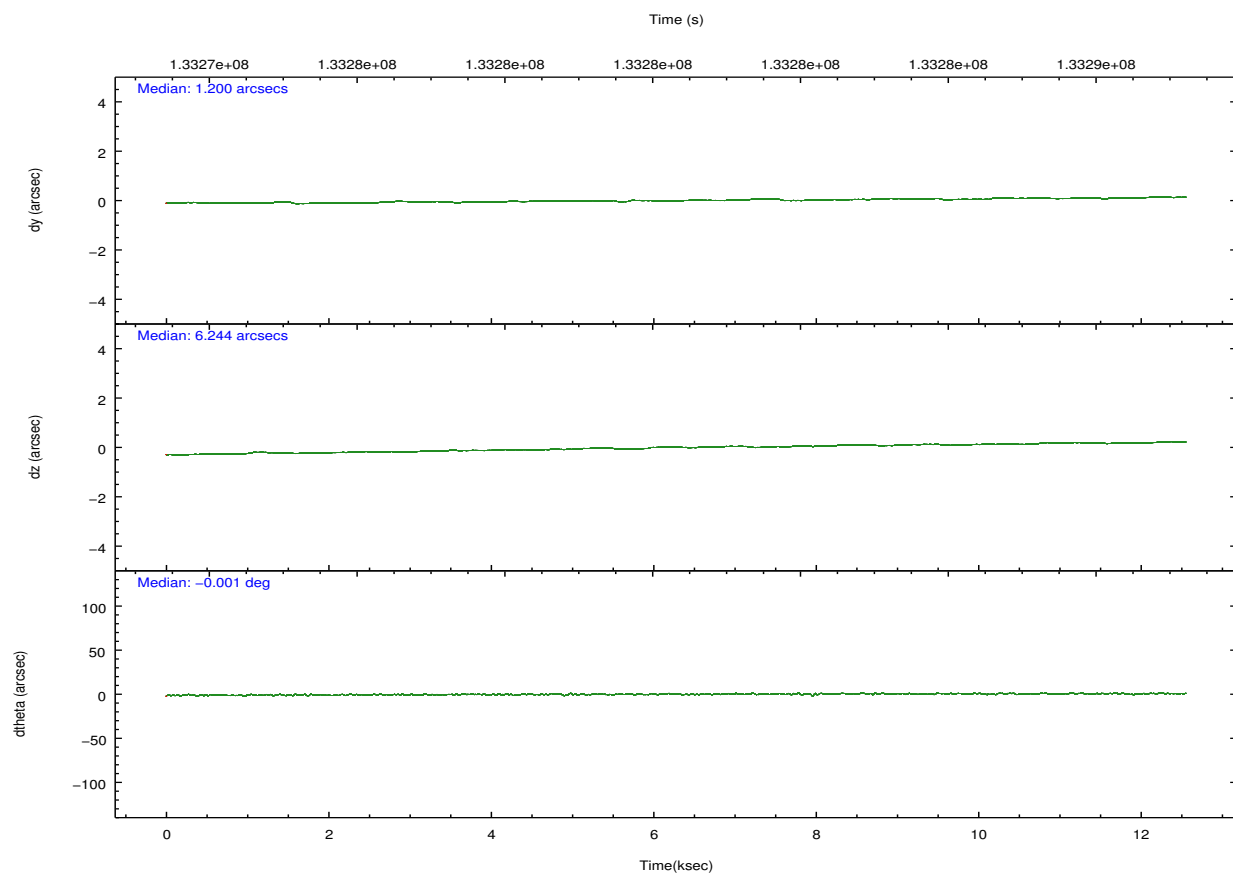
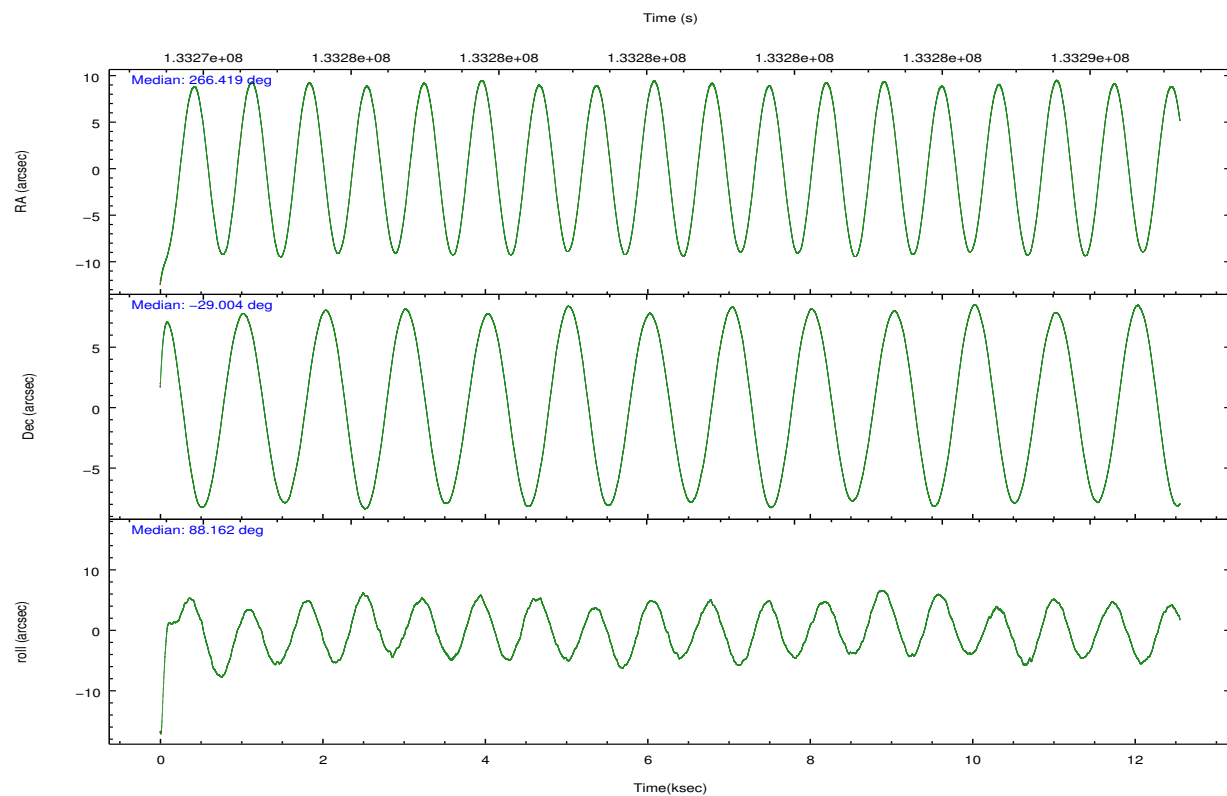
2.2 Compared Parameters

Parameter	Planned	Actual
Instrument	ACIS	ACIS
Detector	ACIS-01236	ACIS-01236
Grating	NONE	NONE
Data mode	FAINT	FAINT
Observation mode	POINTING	POINTING
[deg] Pointing RA	266.433783	266.4189124058023
[deg] Pointing Dec	-29.027663	-29.00353358592032
[deg] Pointing Roll	87.966620	88.16807127518858
[s] Window start time (MET)	133274224.184000	133274224.184000
[s] Window stop time (MET)	133286824.184000	133286824.184000
[mm] SIM focus pos	-0.782348	-0.7809083437167272
[mm] SIM defocus	0	0.001439871863259334
[mm] SIM translation stage pos	-233.592463	-233.5874344608287
[mm] SIM translation stage offset	0	-0.005018542100998502
[s] Observation start time (MET)	133274692.184000	133273504.45853
Observation start date	2002-03-23T12:43:48	2002-03-23T12:25:04
[s] Observation end time (MET)	133286592.184000	133287140.03409
Observation end date	2002-03-23T16:02:08	2002-03-23T16:12:20
Read mode	TIMED	TIMED

Parameter	Planned	Actual
Obspar format version number	7	7
Obspar file type	PREDICTED	ACTUAL
Obspar update status	NONE	UPDATED
Number of optional ACIS chips dropped	0	0
On-chip summing requested	N	N
Subarray requested	NONE	NONE
Alternating exposures requested	N	N
[s] Primary exposure time	0.000000	3.1

2.3 Aspect



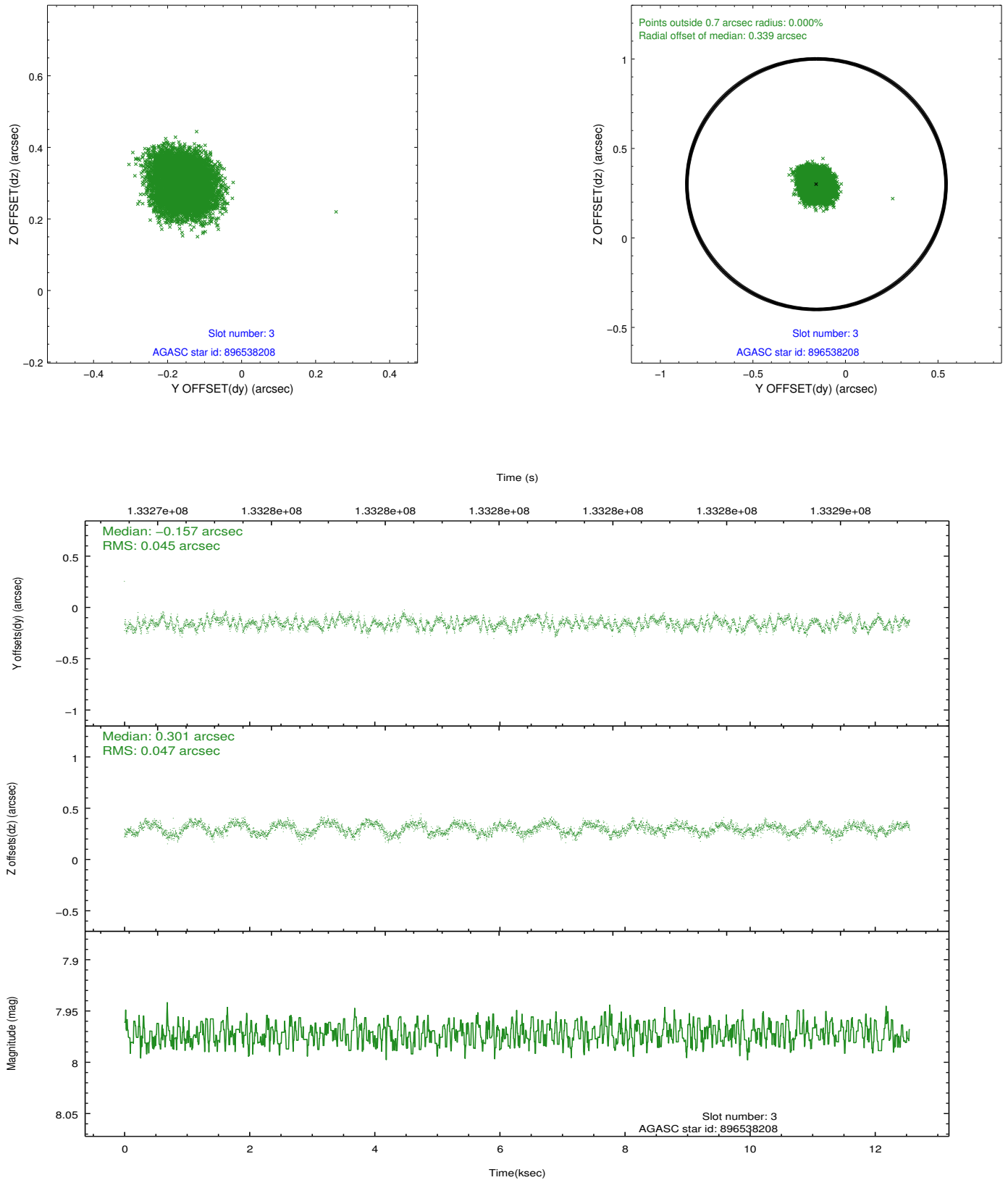


Slot Statistics

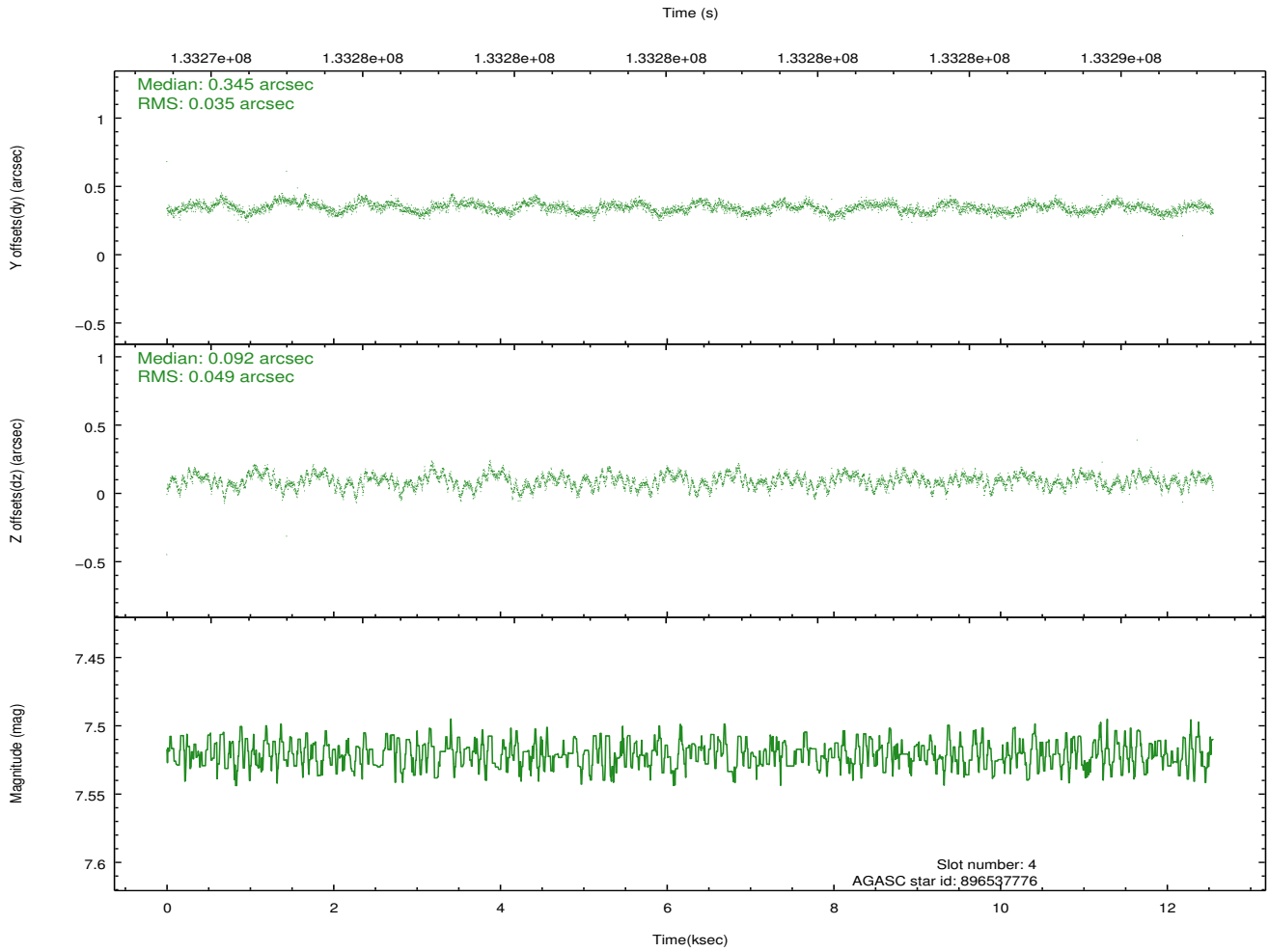
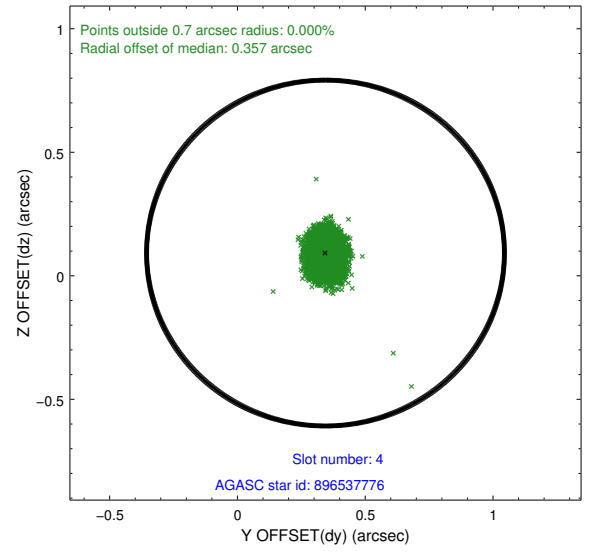
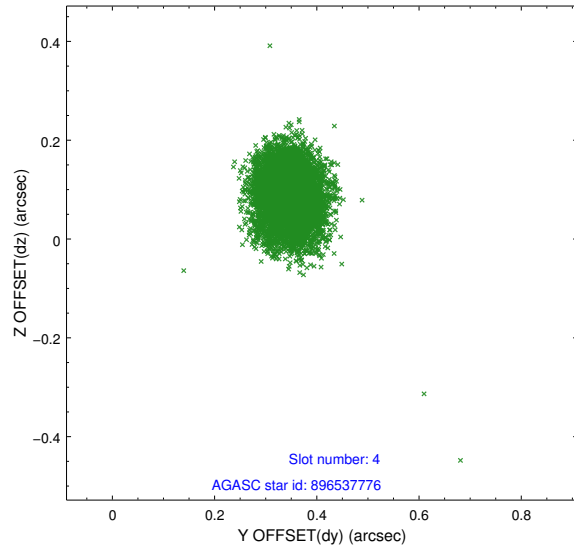
slot	status	id	mag	n_pts	med_dy	med_dz	dr1	dr2	ra	dec	mean_y	mean_z
0	FID	ACIS-I-1	7.25	3063	-0.010	0.012	0.007	0.013	0.000000	0.000000	938.61	-829.60
1	FID	ACIS-I-5	7.24	3062	-0.057	0.038	0.007	0.011	0.000000	0.000000	-1809.29	1067.77
2	FID	ACIS-I-6	7.26	3062	-0.024	0.020	0.007	0.012	0.000000	0.000000	403.77	1712.66
3	GUIDE	896538208	7.97	6123	-0.157	0.301	0.070	0.105	267.176969	-28.671626	1357.81	-2300.71
4	GUIDE	896537776	7.52	6124	0.345	0.092	0.063	0.103	266.655684	-29.665673	-2269.97	-776.18
5	GUIDE	896540808	7.49	6124	0.135	-0.280	0.056	0.088	265.985401	-29.308604	-1062.95	1369.79
6	GUIDE	896535464	9.31	6121	-0.155	0.209	0.186	0.275	266.962550	-28.408631	2283.49	-1594.16
7	GUIDE	896544560	9.03	6121	-0.160	-0.319	0.071	0.117	265.902975	-28.371895	2296.77	1763.30

2.4 Star Slots

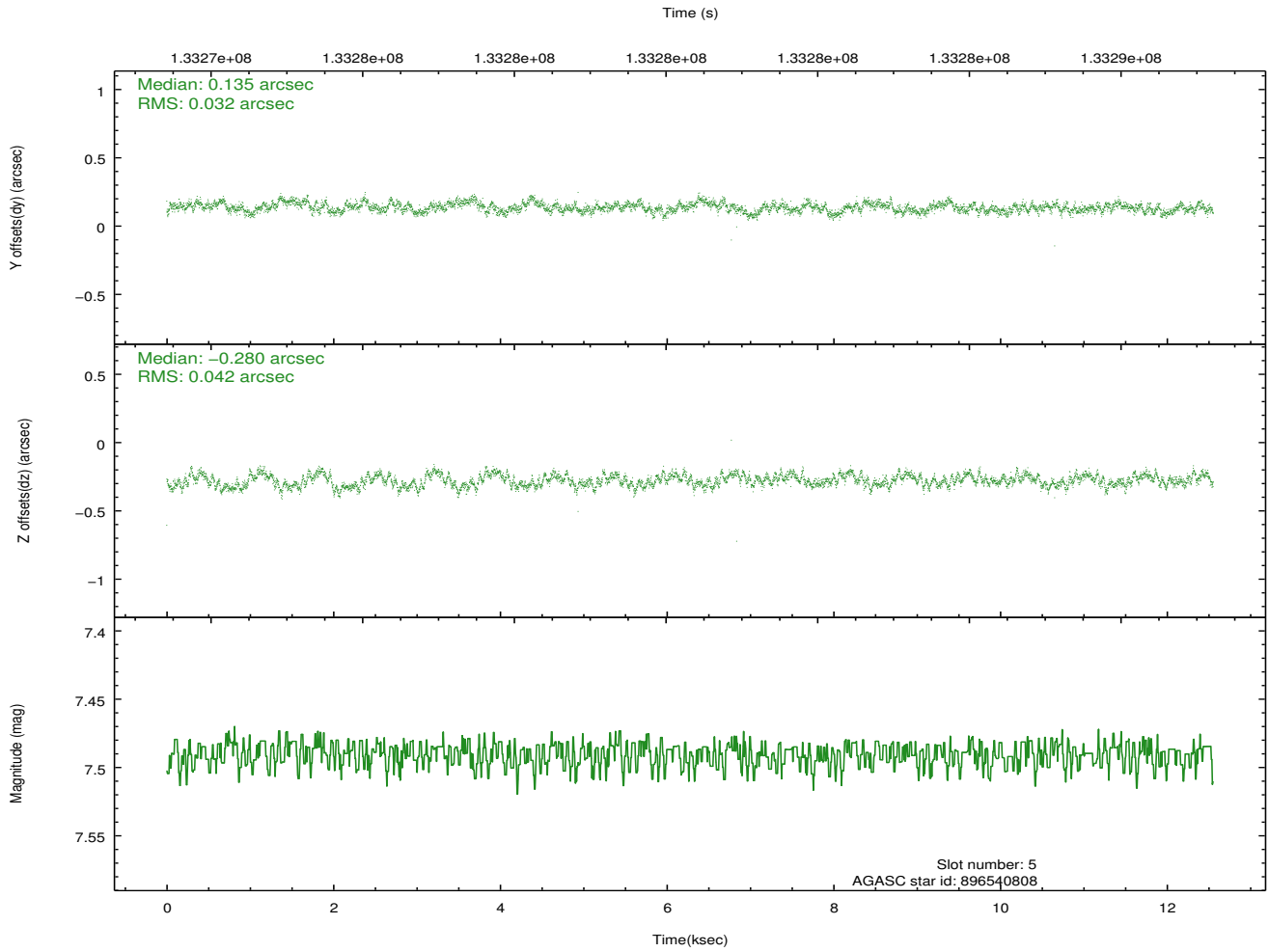
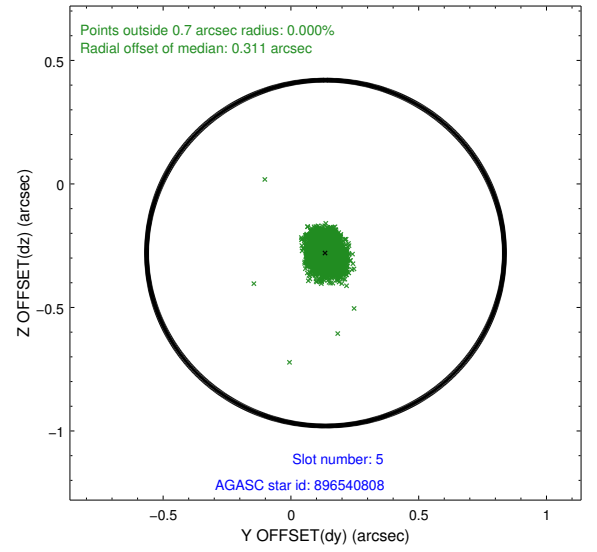
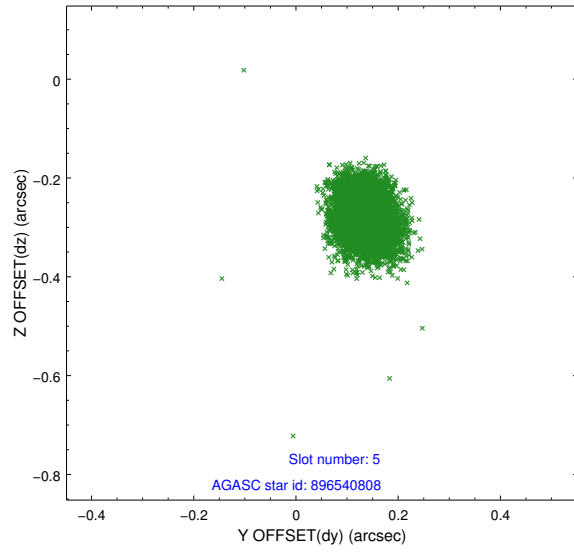
2.4.1 Slot 3



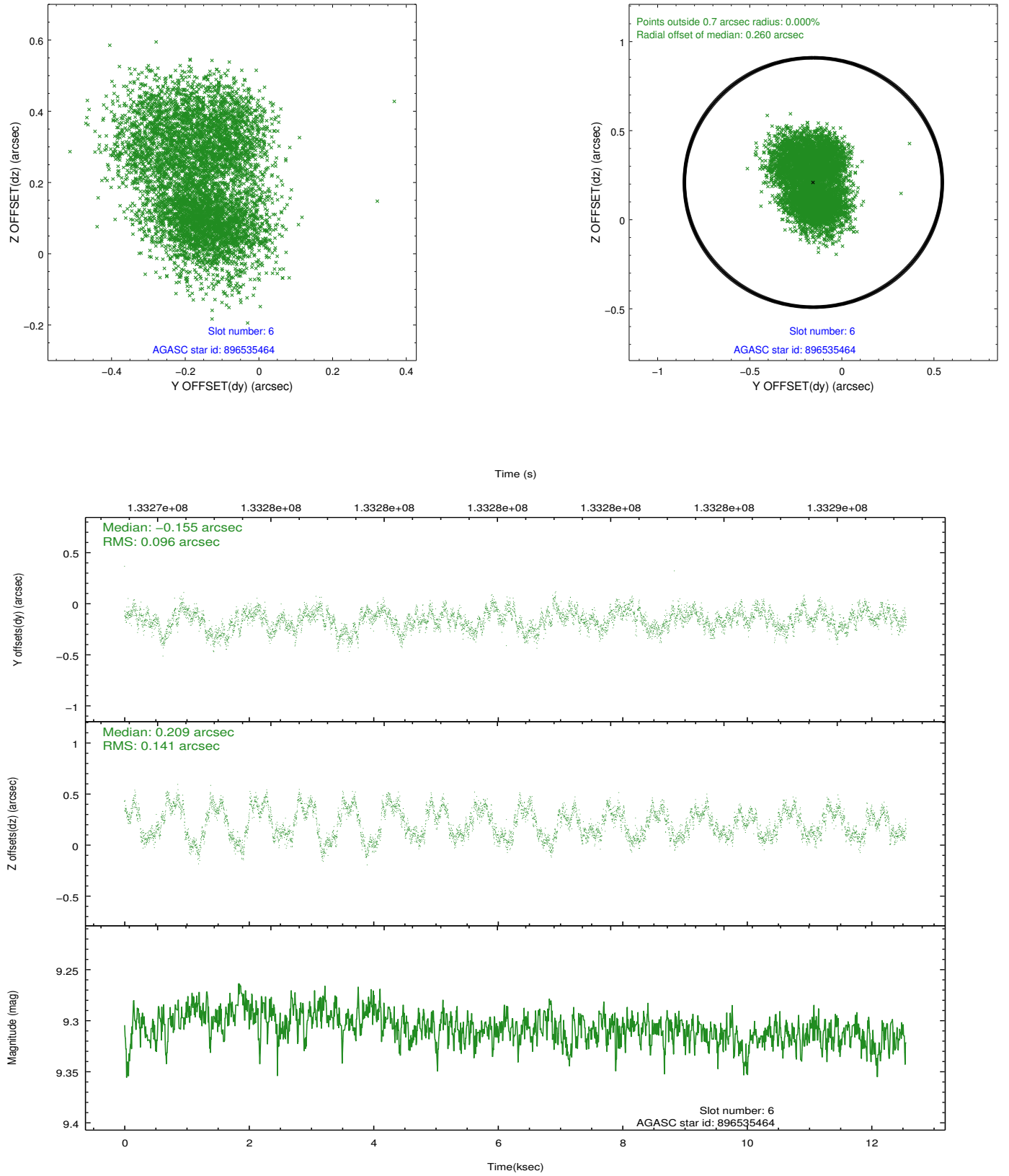
2.4.2 Slot 4



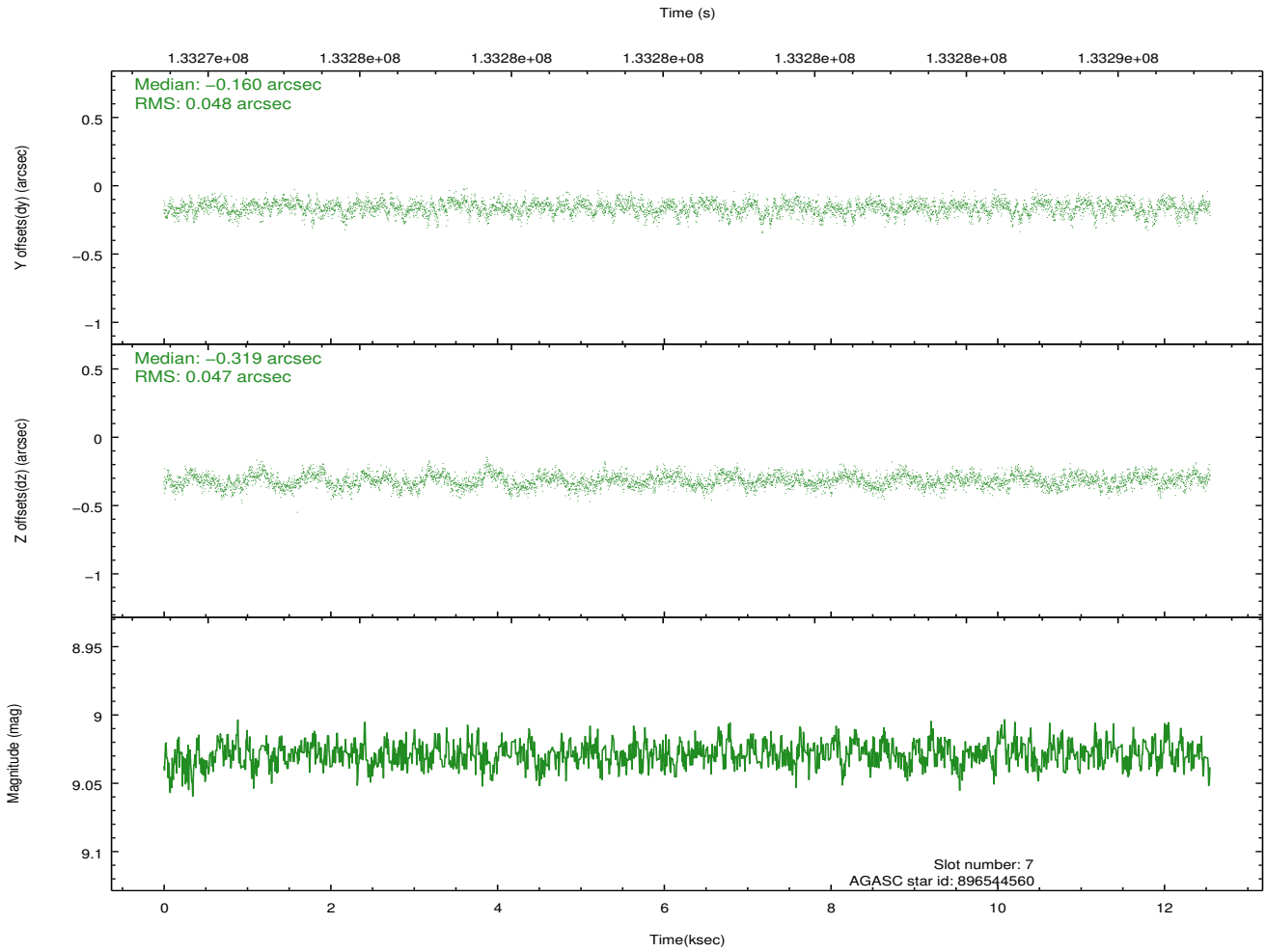
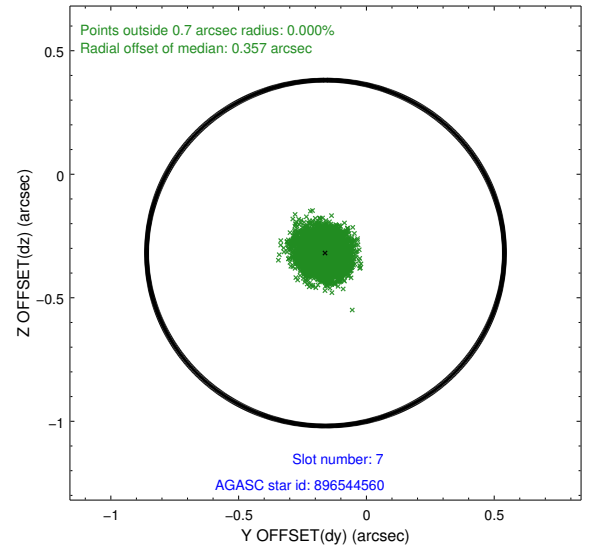
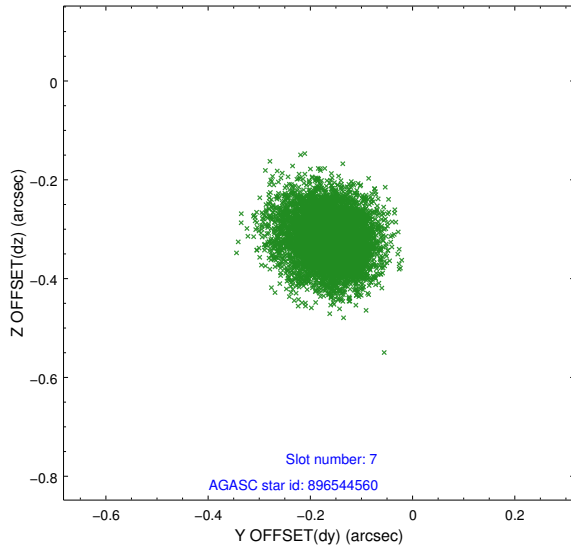
2.4.3 Slot 5



2.4.4 Slot 6

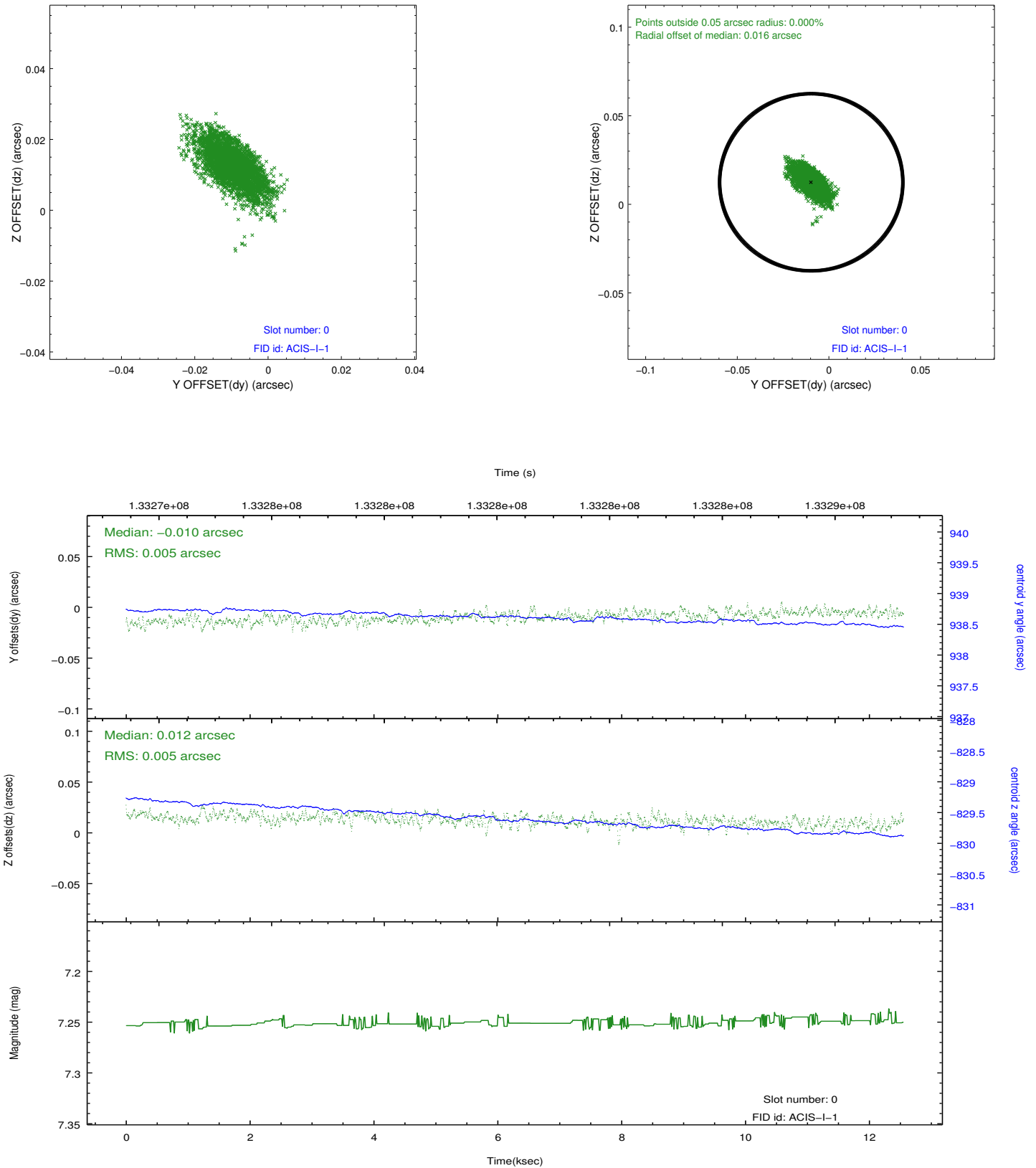


2.4.5 Slot 7

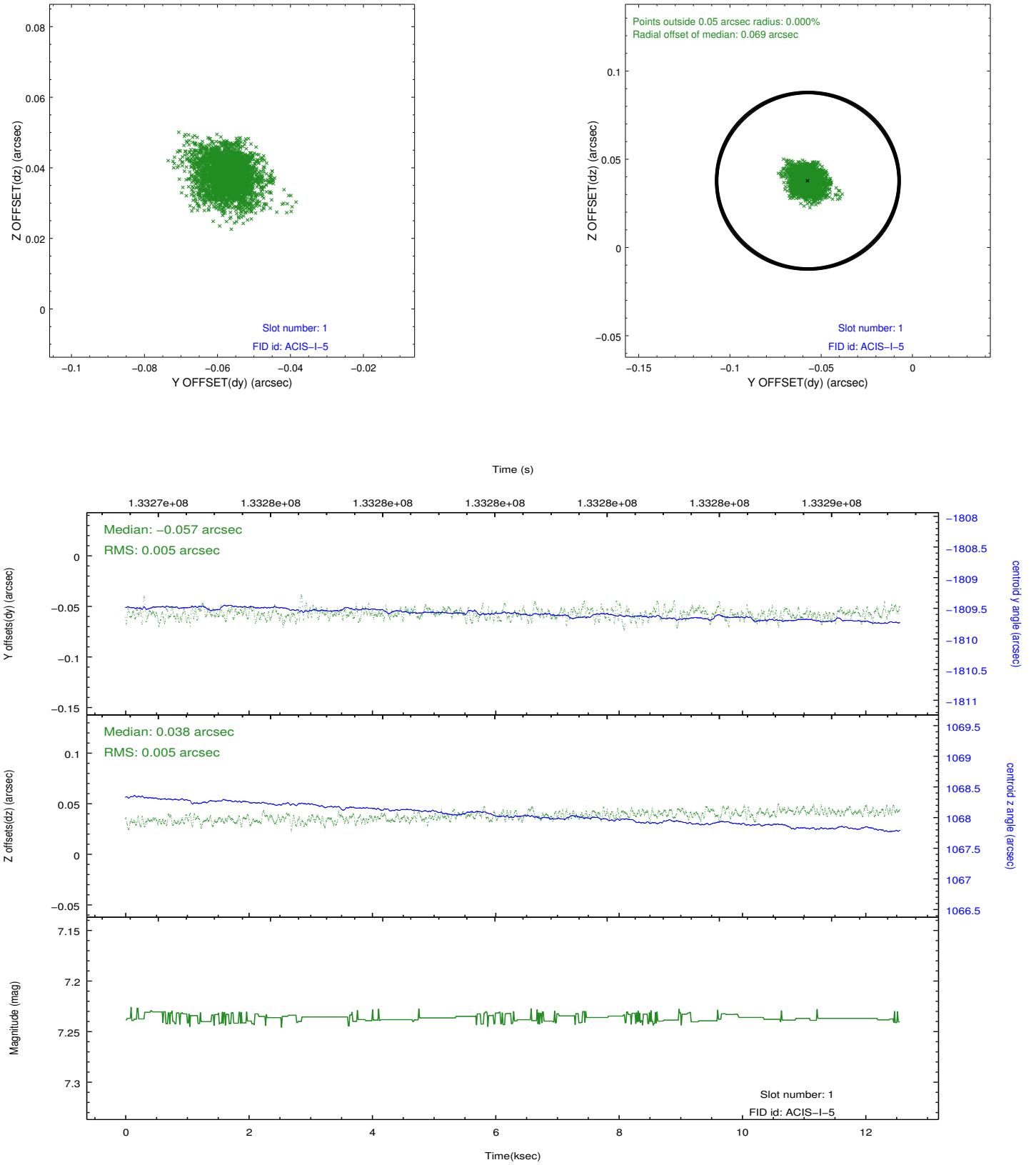


2.5 FID Slots

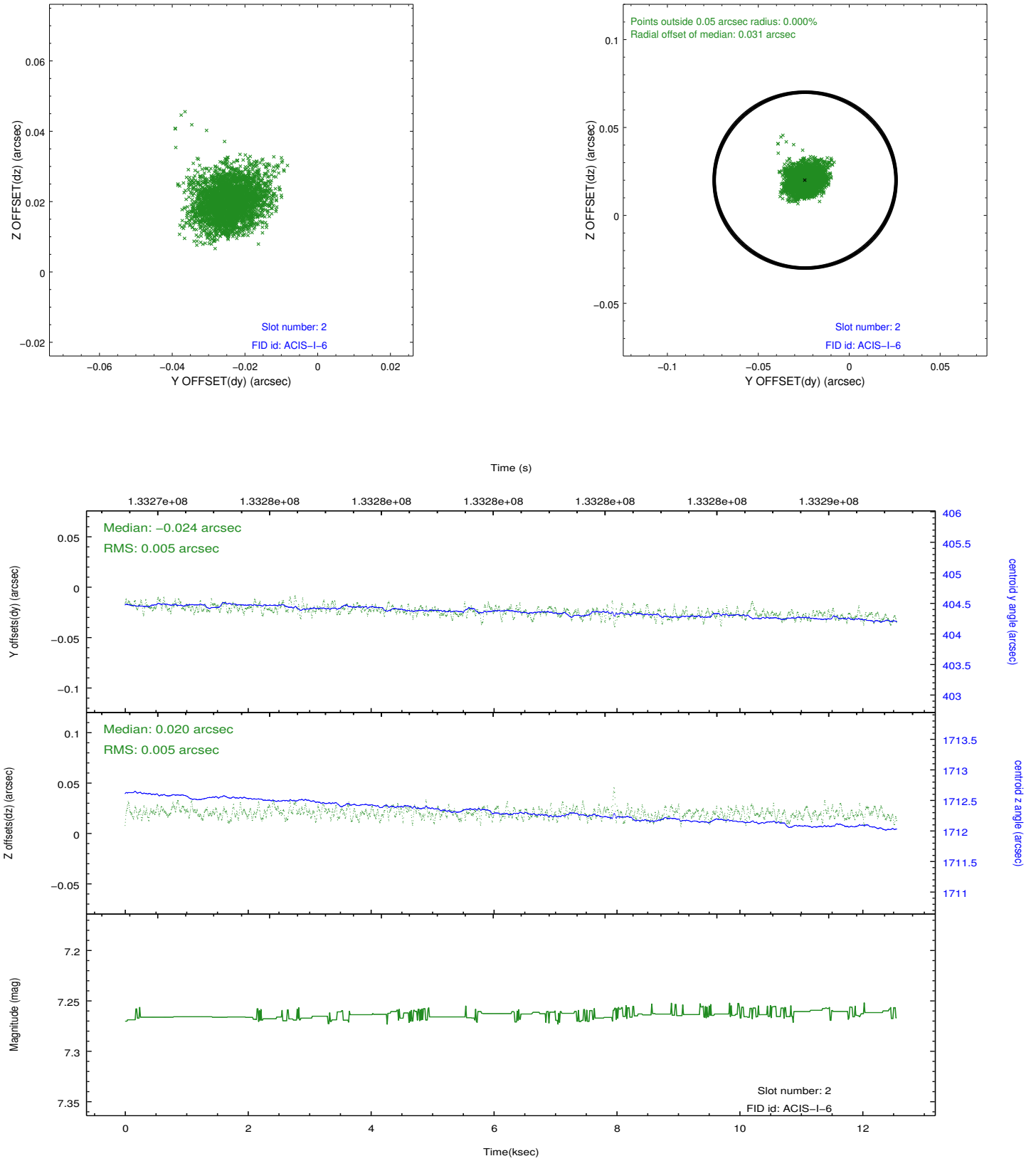
2.5.1 Slot 0



2.5.2 Slot 1



2.5.3 Slot 2



A Summary

A.1 Status

V&V Scientist	Beth Sundheim
V&V Date (YYYY-MM-DD)	2012.10.05
V&V Edition	1
V&V Disposition and Status	OK
V&V Charge Time	12.015

A.2 Comments

Window preference met.