

# V&V Reference Report

## L2 ASCDS Version : 7.6.9

Observation 2947 - L2 Version 001  
Chandra X-Ray Center

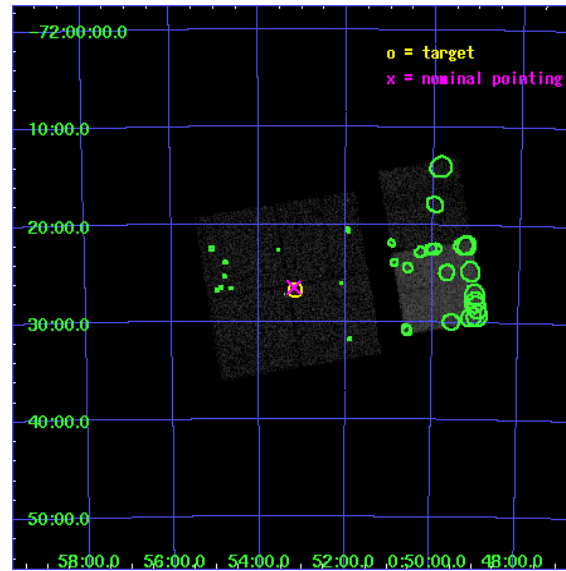
L2 Processing Date : Sep 26 2006

## Contents

<b>1</b>	<b>Front</b>	<b>2</b>
<b>2</b>	<b>OBI</b>	<b>3</b>
2.1	OBI . . . . .	3
2.1.1	Images . . . . .	3
2.1.2	Bias . . . . .	3
2.1.3	Parameters . . . . .	4
2.1.4	Events . . . . .	4
2.2	Compared Parameters . . . . .	5
2.3	Aspect . . . . .	6
2.4	Star Slots . . . . .	9
2.4.1	Slot 3 . . . . .	9
2.4.2	Slot 4 . . . . .	10
2.4.3	Slot 5 . . . . .	11
2.4.4	Slot 6 . . . . .	12
2.4.5	Slot 7 . . . . .	13
2.5	FID Slots . . . . .	14
2.5.1	Slot 0 . . . . .	14
2.5.2	Slot 1 . . . . .	15
2.5.3	Slot 2 . . . . .	16
<b>3</b>	<b>Point Sources</b>	<b>17</b>
<b>A</b>	<b>Summary</b>	<b>18</b>
A.1	Status . . . . .	18
A.2	Comments . . . . .	18

# 1 Front

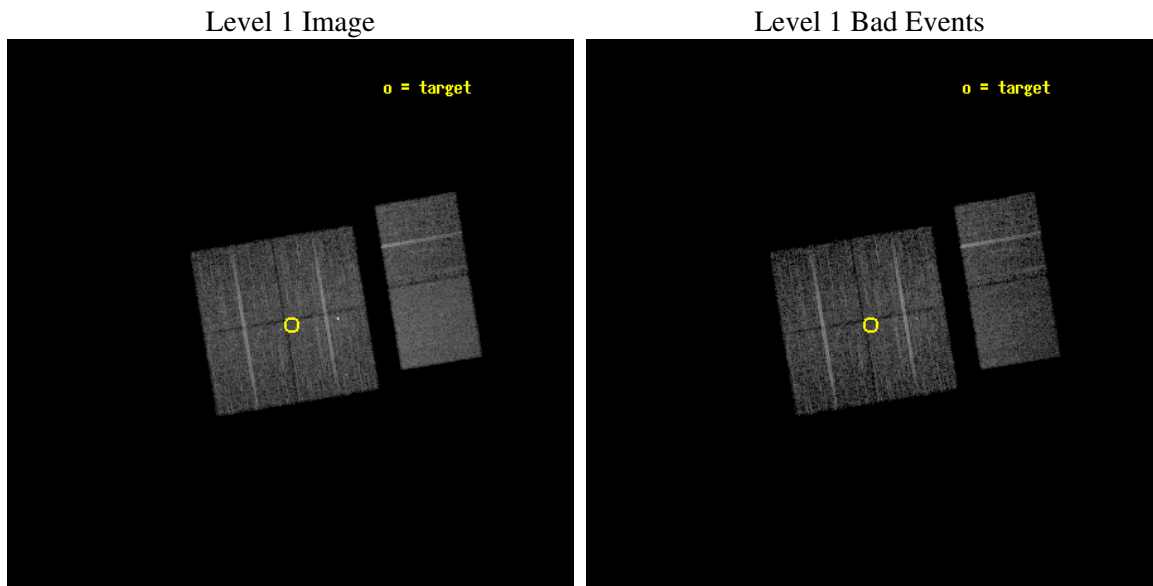
seq_num	600284
obs_id	2947
title	A CHANDRA SURVEY OF THE SMC
observer	Dr. Andreas Zezas
object	SMC FIELD 5
dtcycle	0
cycle	P
ra_targ	13.289583
dec_targ	-72.445556
ra_nom	13.297693744819
dec_nom	-72.441640298758
roll_nom	80.571681626322
revision	2
ontime	7766.3999710679
livetime	7668.0571382696
ontime0	7766.3999710679
ontime1	7766.3999710679
ontime2	7766.3999710679
ontime3	7766.3999710679
ontime6	7766.3999710679
ontime7	7766.3999710679
l2events	56399



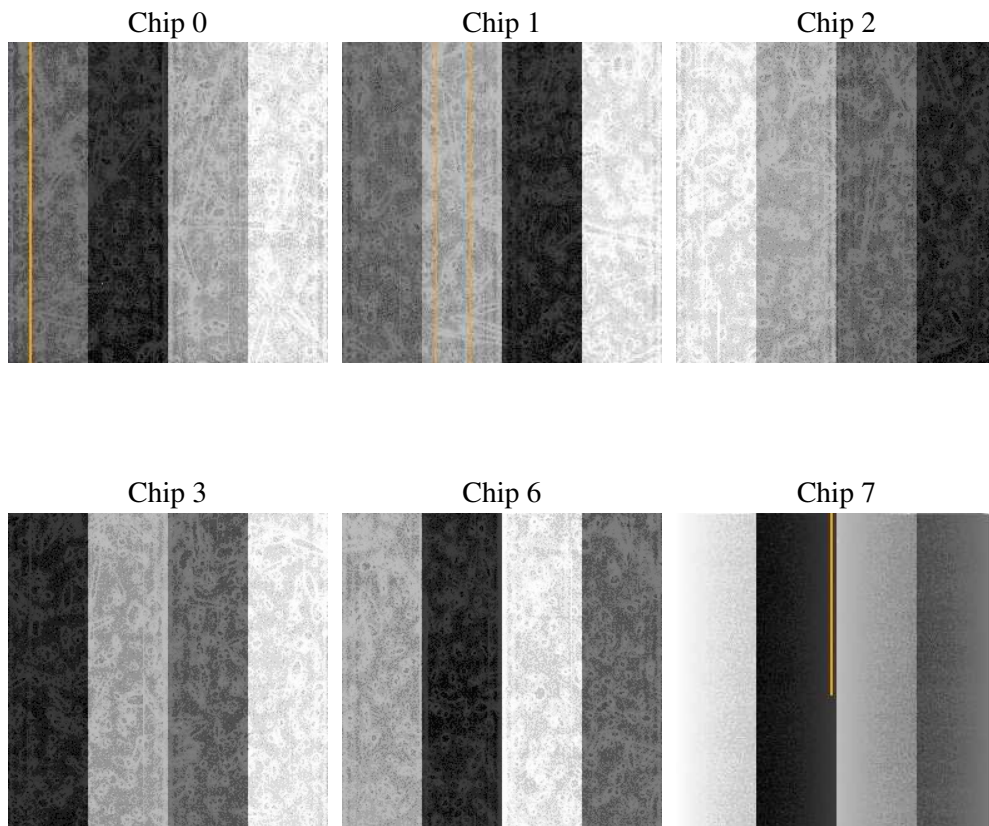
## 2 OBI

### 2.1 OBI

#### 2.1.1 Images



#### 2.1.2 Bias



### 2.1.3 Parameters

obi_num	1
ascdsver	7.6.9
caldbver	3.2.3
date	2006-09-26T08:51:34
revision	2

sched_exp_time	7800.000000
ontime	7768.6897594929
ontime0	7768.6897594929
ontime1	7768.6897594929
ontime2	7768.6897594929
ontime3	7768.6897594929
ontime6	7768.6897594929
ontime7	7768.6897594929
l1events	312961

### 2.1.4 Events

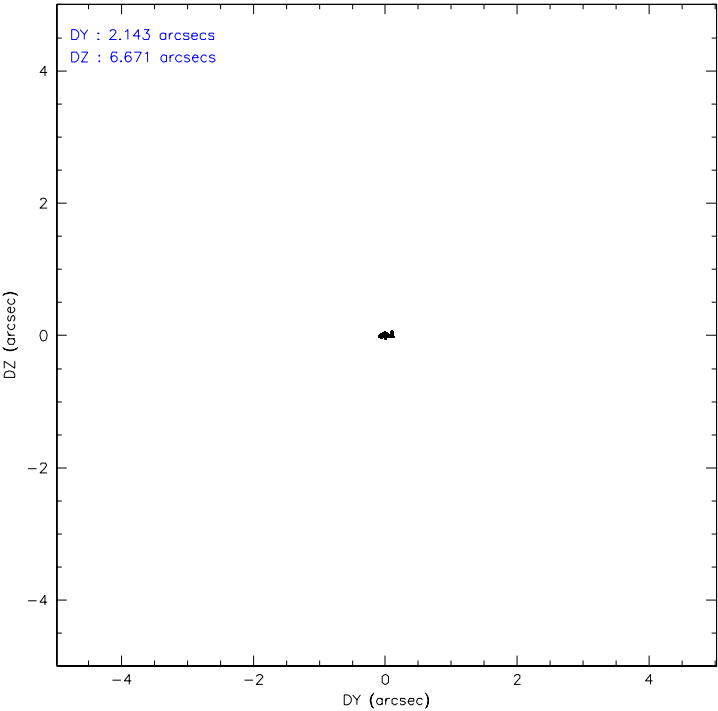
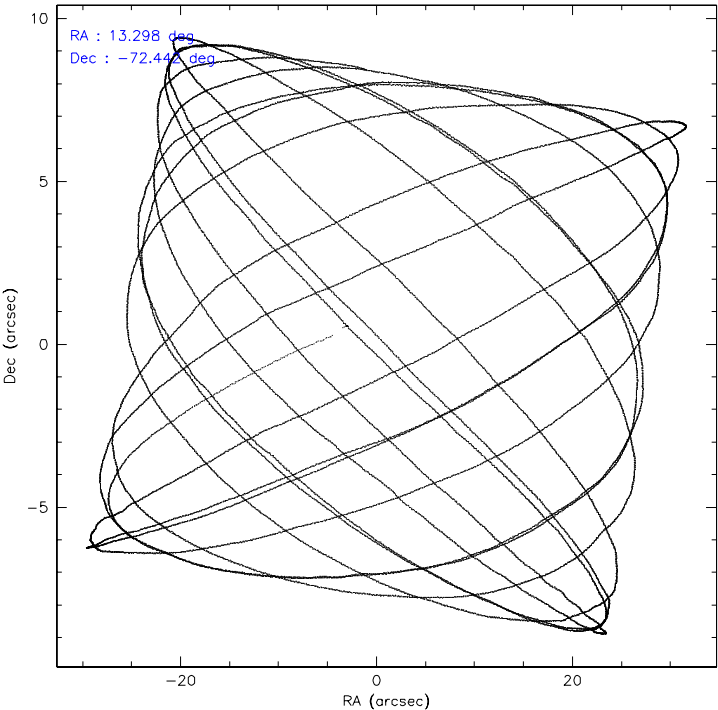
	ccd 0	ccd 1	ccd 2	ccd 3	ccd 6	ccd 7
level 1 events	45924	46661	51629	53870	50426	64451
rejected events	38693	39560	45074	44978	43812	39086
rejected %	84%	84%	87%	83%	86%	60%

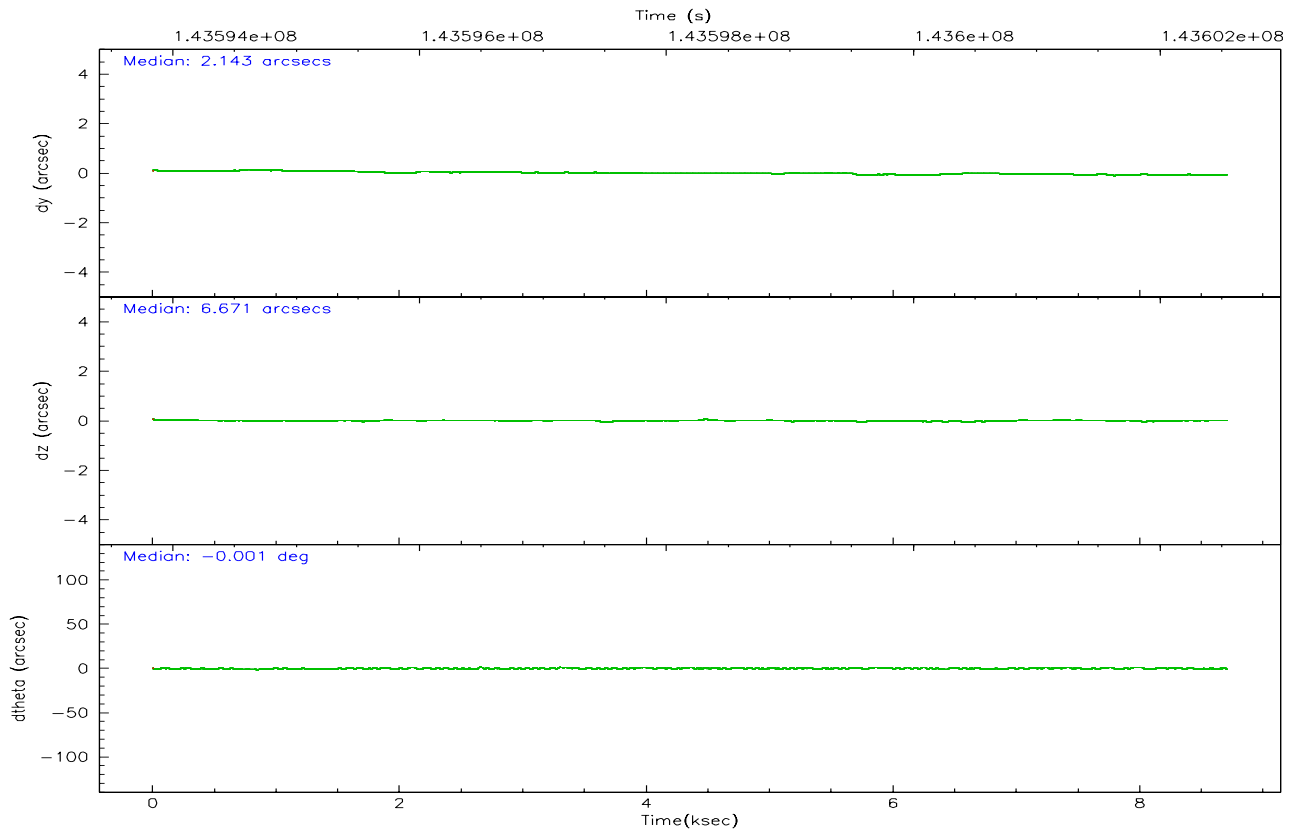
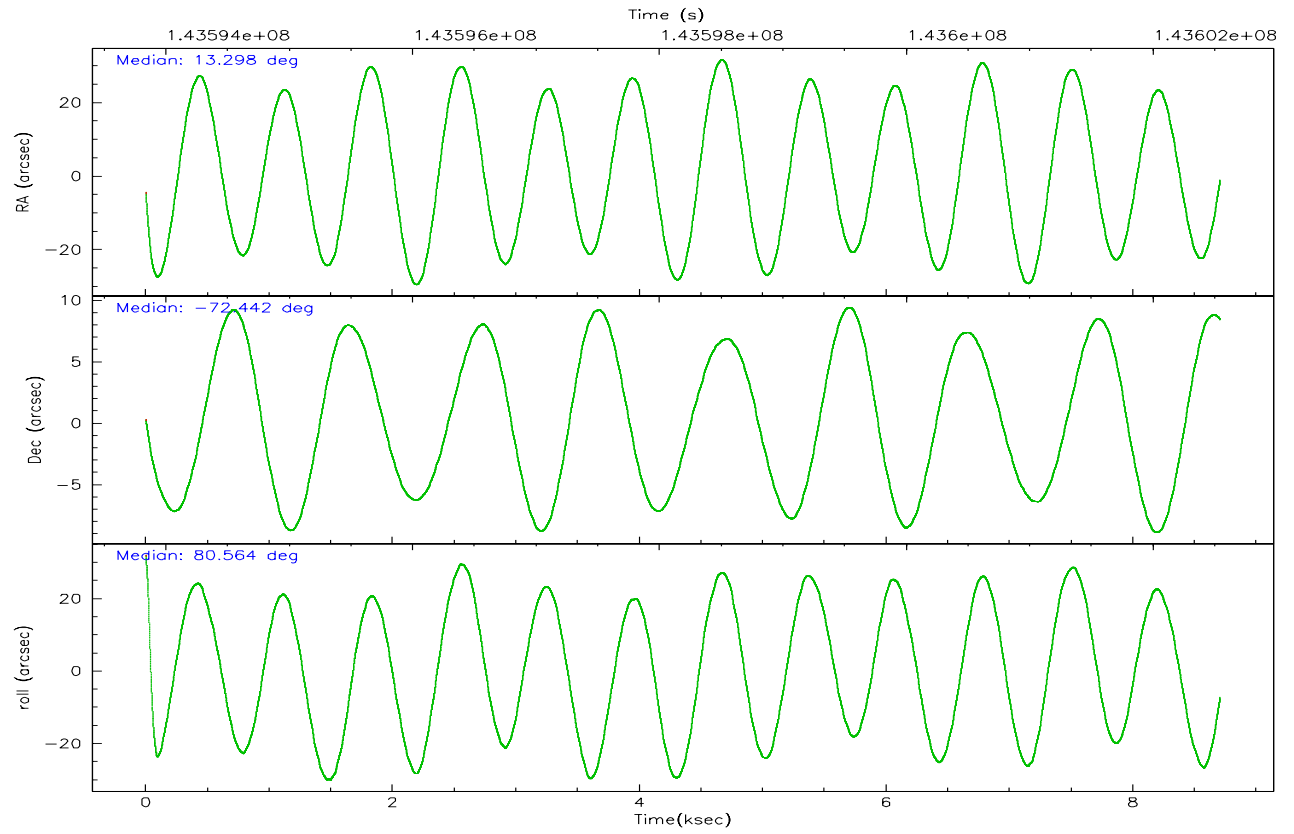
	ccd 0	ccd 1	ccd 2	ccd 3	ccd 6	ccd 7
grade 0 events	3271	3006	2857	4456	2652	1590
	7%	6%	5%	8%	5%	2%
grade 1 events	31	24	28	89	27	45
	0%	0%	0%	0%	0%	0%
grade 2 events	1503	1473	1458	1727	1430	6445
	3%	3%	2%	3%	2%	9%
grade 3 events	633	661	556	708	576	1293
	1%	1%	1%	1%	1%	2%
grade 4 events	604	665	554	694	601	1296
	1%	1%	1%	1%	1%	2%
grade 5 events	1743	1901	1657	1936	2187	4182
	3%	4%	3%	3%	4%	6%
grade 6 events	1222	1298	1131	1310	1360	14753
	2%	2%	2%	2%	2%	22%
grade 7 events	36917	37633	43388	42950	41593	34847
	80%	80%	84%	79%	82%	54%

## 2.2 Compared Parameters

Parameter	Planned	Actual	Parameter	Planned	Actual
Instrument	ACIS	ACIS	Obspar format version number	6	6
Detector	ACIS-012367	ACIS-012367	Obspar file type	PREDICTED	ACTUAL
Grating	NONE	NONE	Obspar update status	NONE	UPDATED
Data mode	FAINT	FAINT	Number of optional ACIS chips dropped	0	0
Observation mode	POINTING	POINTING	On-chip summing requested	N	N
Pointing RA	13.330107	13.29769374481924	Subarray requested	NONE	NONE
Pointing Dec	-72.467244	-72.44164029875837	Alternating exposures requested	N	N
Pointing Roll	80.393840	80.57168162632247	Primary exposure time	0.000000	3.2
SIM focus pos (mm)	-0.782348	-0.7809083437167272			
SIM defocus (mm)	0	0.001439871863259334			
SIM translation stage pos (mm)	-233.592463	-233.5874344608287			
SIM translation stage offset (mm)	0	-0.005018542100998502			
Observation start time	143594750.184000	143593430.89227			
Observation start date	2002-07-20T23:24:46	2002-07-20T23:03:50			
Observation end time	143602550.184000	143603201.70517			
Observation end date	2002-07-21T01:34:46	2002-07-21T01:46:41			
Read mode	TIMED	TIMED			

2.3 Aspect





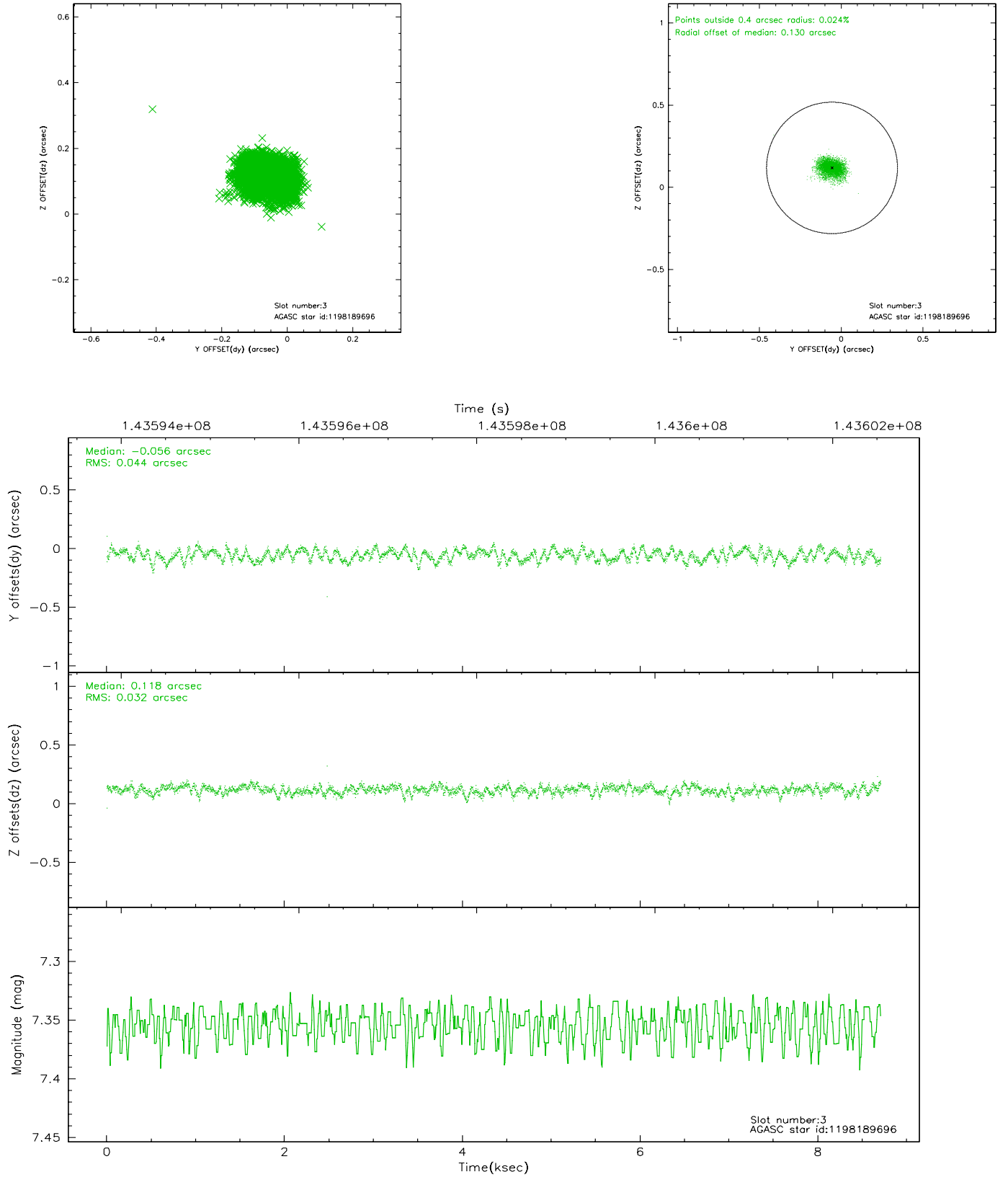
### Slot Statistics

slot	status	id	mag	n_pts	med_dy	med_dz	dr1	dr2	ra	dec	mean_y	mean_z
0	FID	ACIS-I-1	7.25	2124	-0.022	0.038	0.006	0.009	0.000000	0.000000	937.62	-830.04
1	FID	ACIS-I-5	7.24	2124	-0.022	0.041	0.006	0.010	0.000000	0.000000	-1810.09	1067.20
2	FID	ACIS-I-6	7.26	2124	-0.048	-0.008	0.006	0.010	0.000000	0.000000	402.51	1712.32
3	GUIDE	1198189696	7.35	4248	-0.056	0.118	0.057	0.093	15.223750	-72.697522	-510.01	-2141.92
4	GUIDE	1198190584	9.38	4245	0.027	0.086	0.094	0.154	13.276396	-73.109281	-2287.99	-330.56
5	GUIDE	1198191400	8.39	4233	-0.042	-0.204	0.054	0.089	11.617890	-72.595865	-790.55	1736.12
6	GUIDE	1197742272	8.85	4226	0.008	-0.056	0.069	0.112	11.595927	-71.782422	2077.31	2332.16
7	GUIDE	1197750640	9.75	4241	0.067	0.059	0.114	0.189	15.758835	-72.088048	1742.45	-2430.55

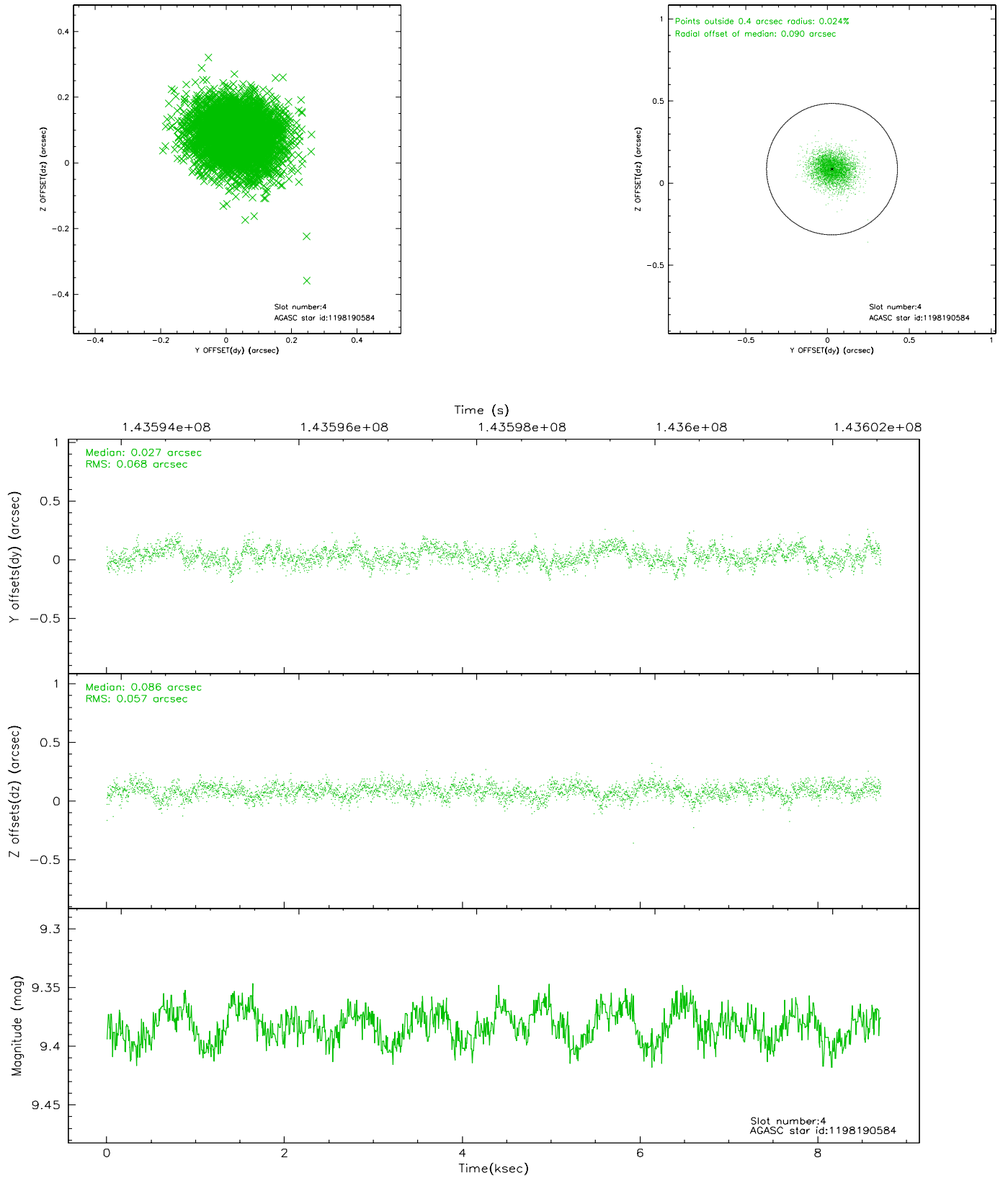


## 2.4 Star Slots

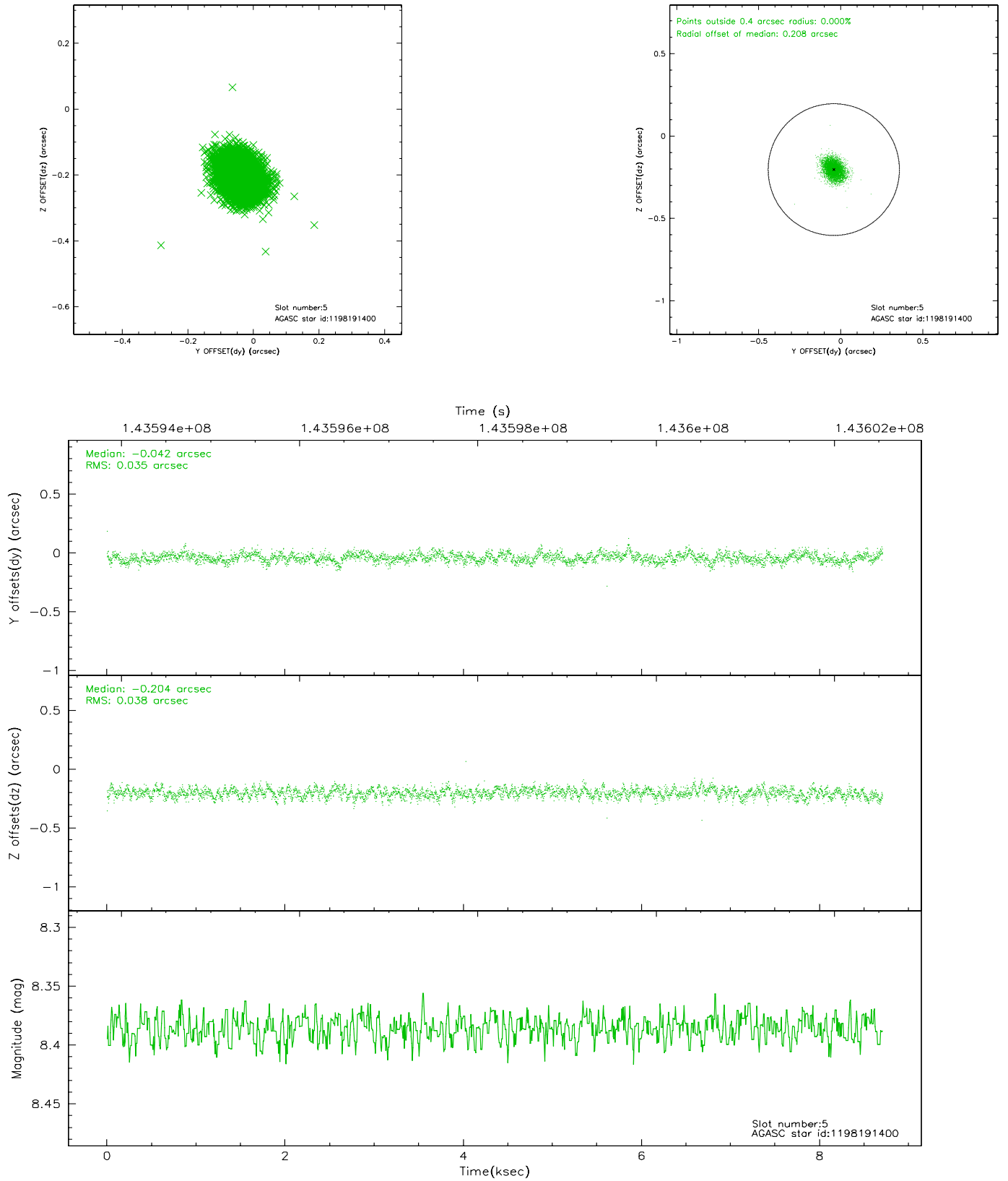
### 2.4.1 Slot 3



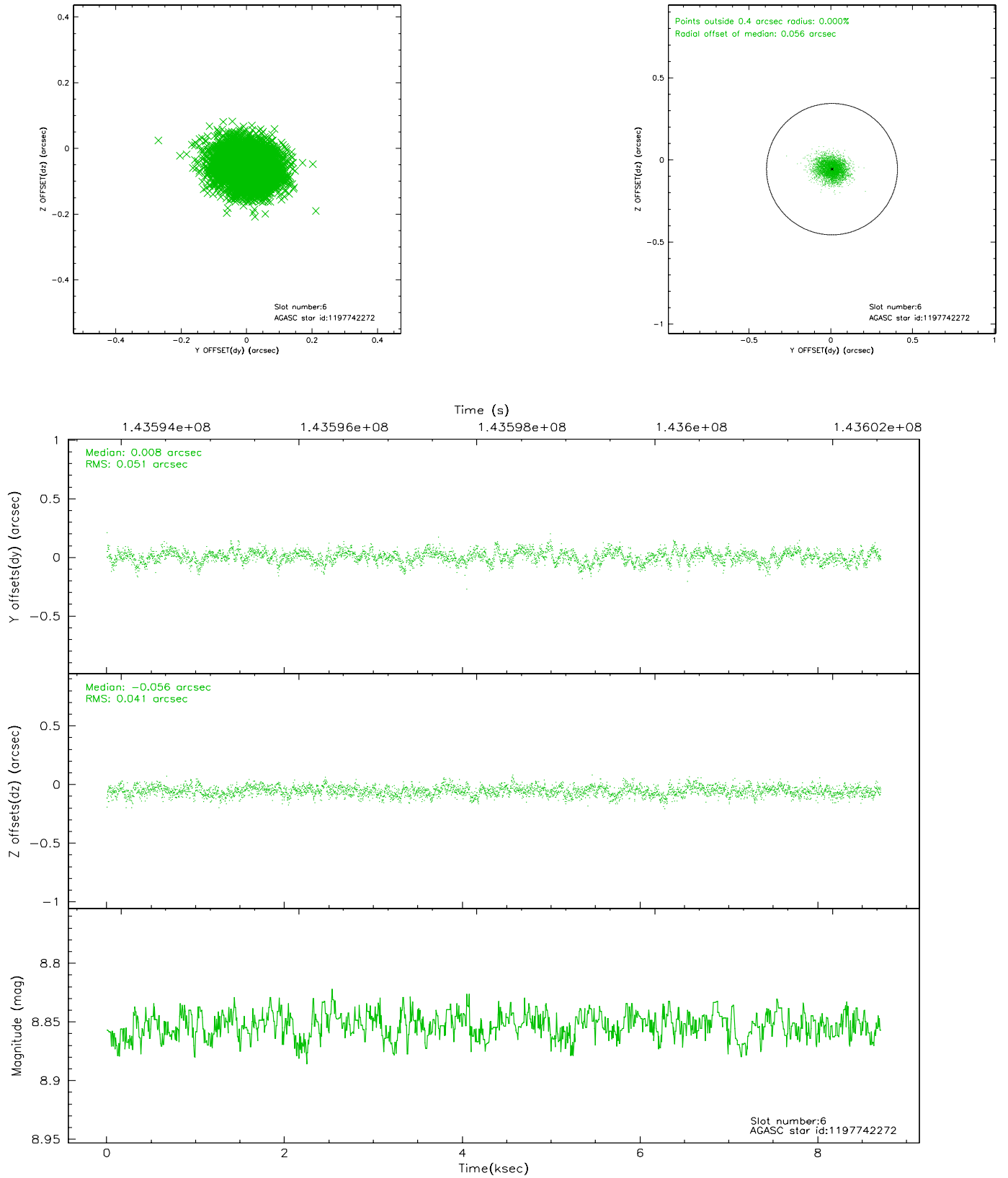
## 2.4.2 Slot 4



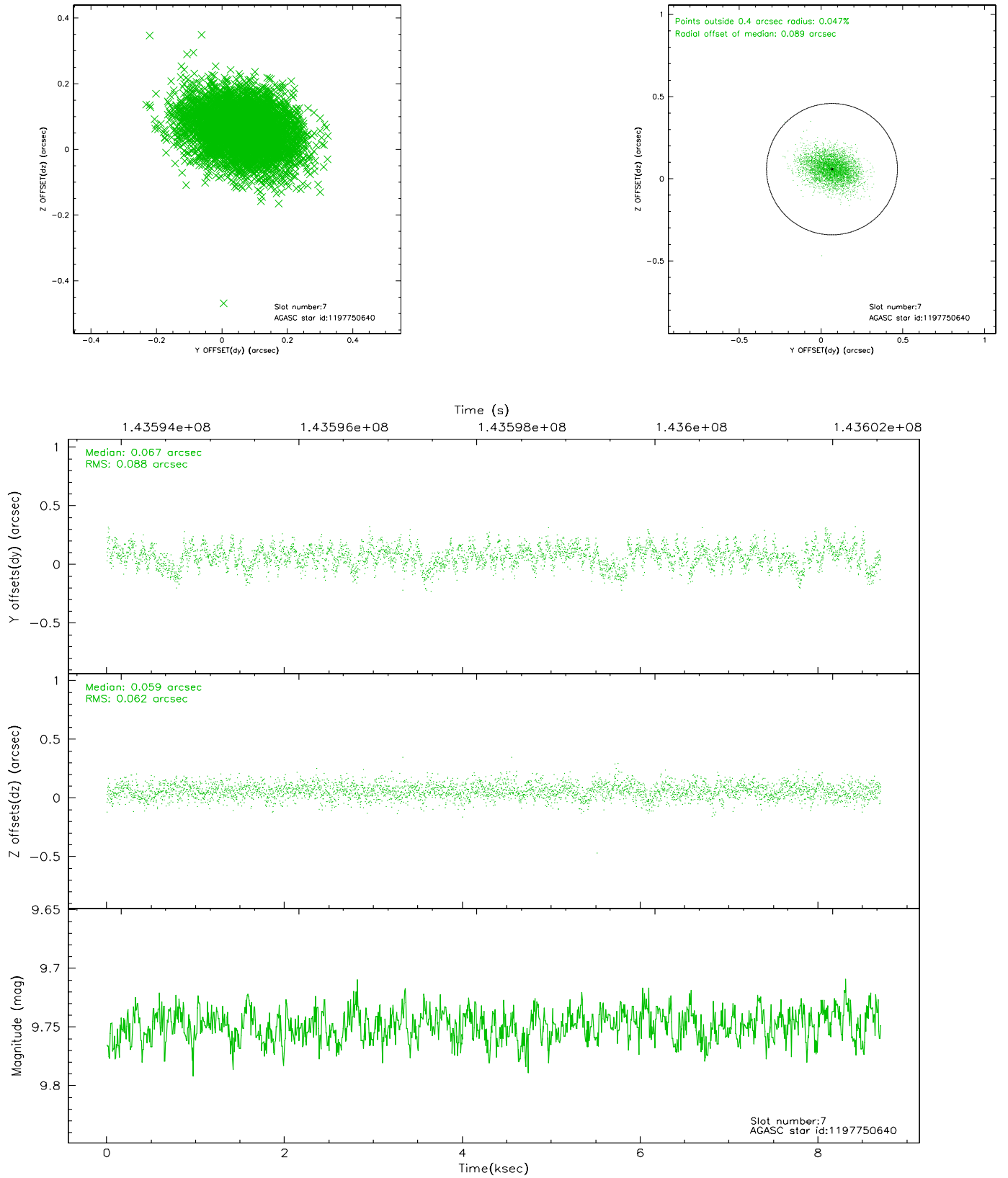
### 2.4.3 Slot 5



## 2.4.4 Slot 6

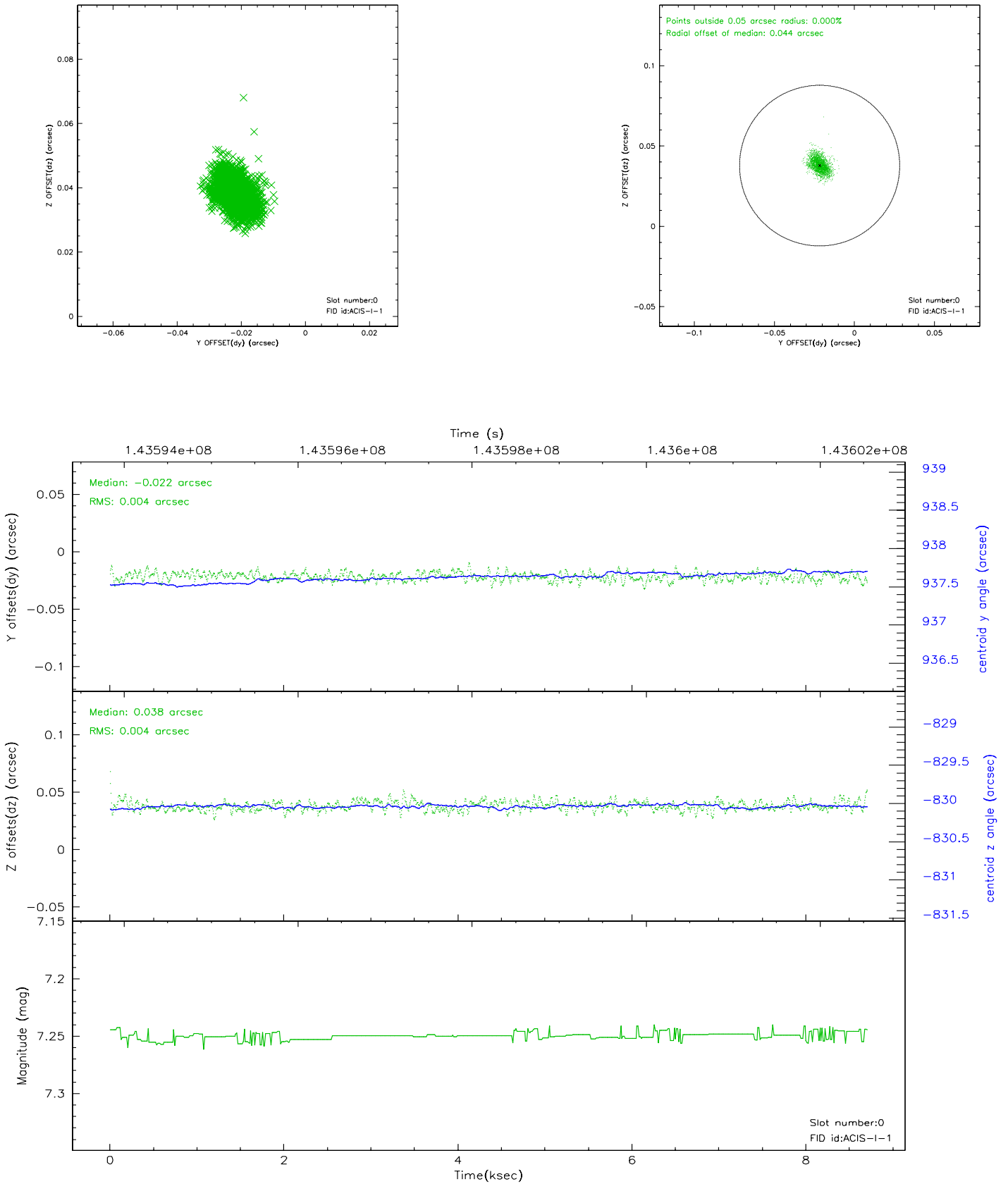


## 2.4.5 Slot 7

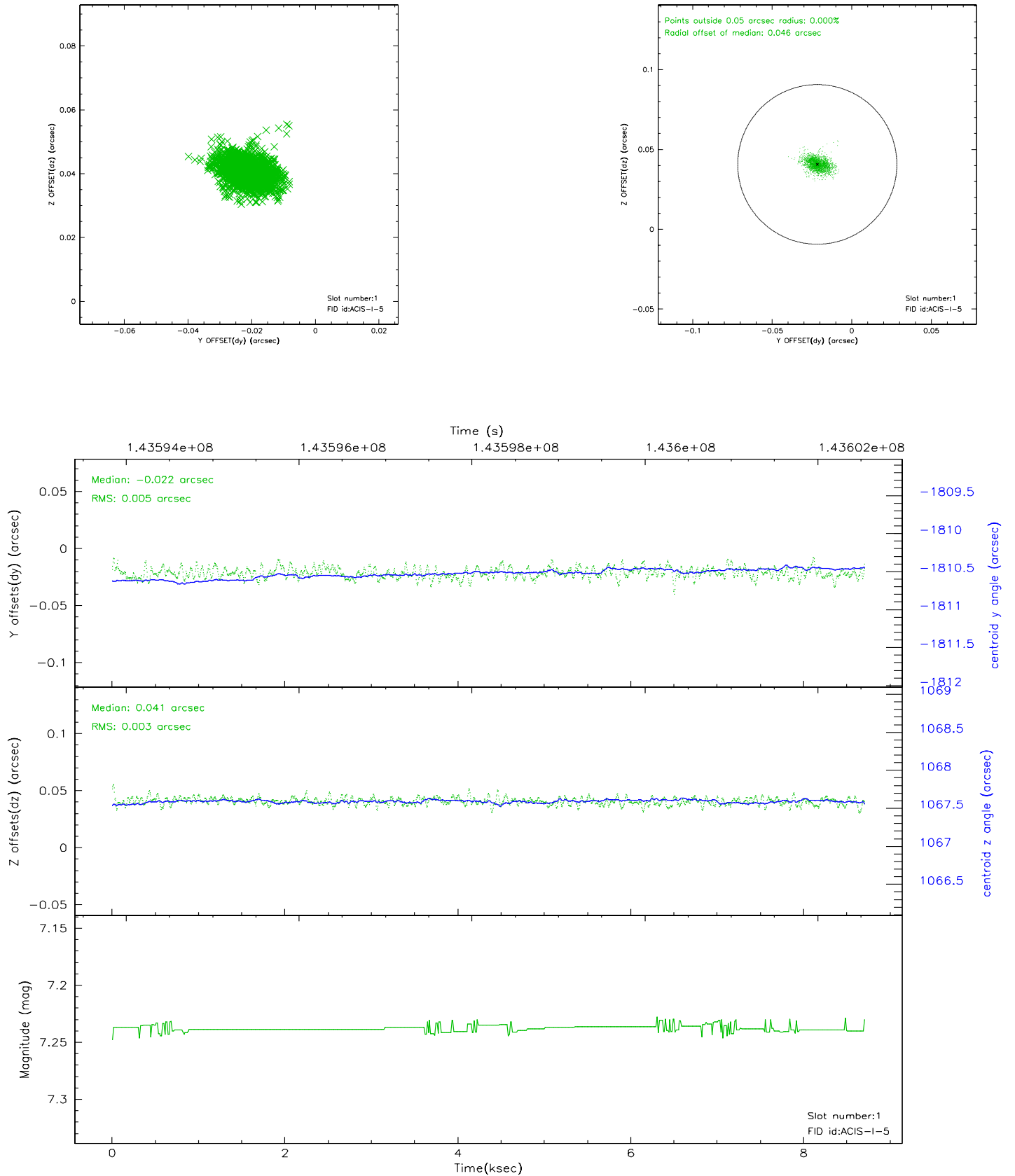


## 2.5 FID Slots

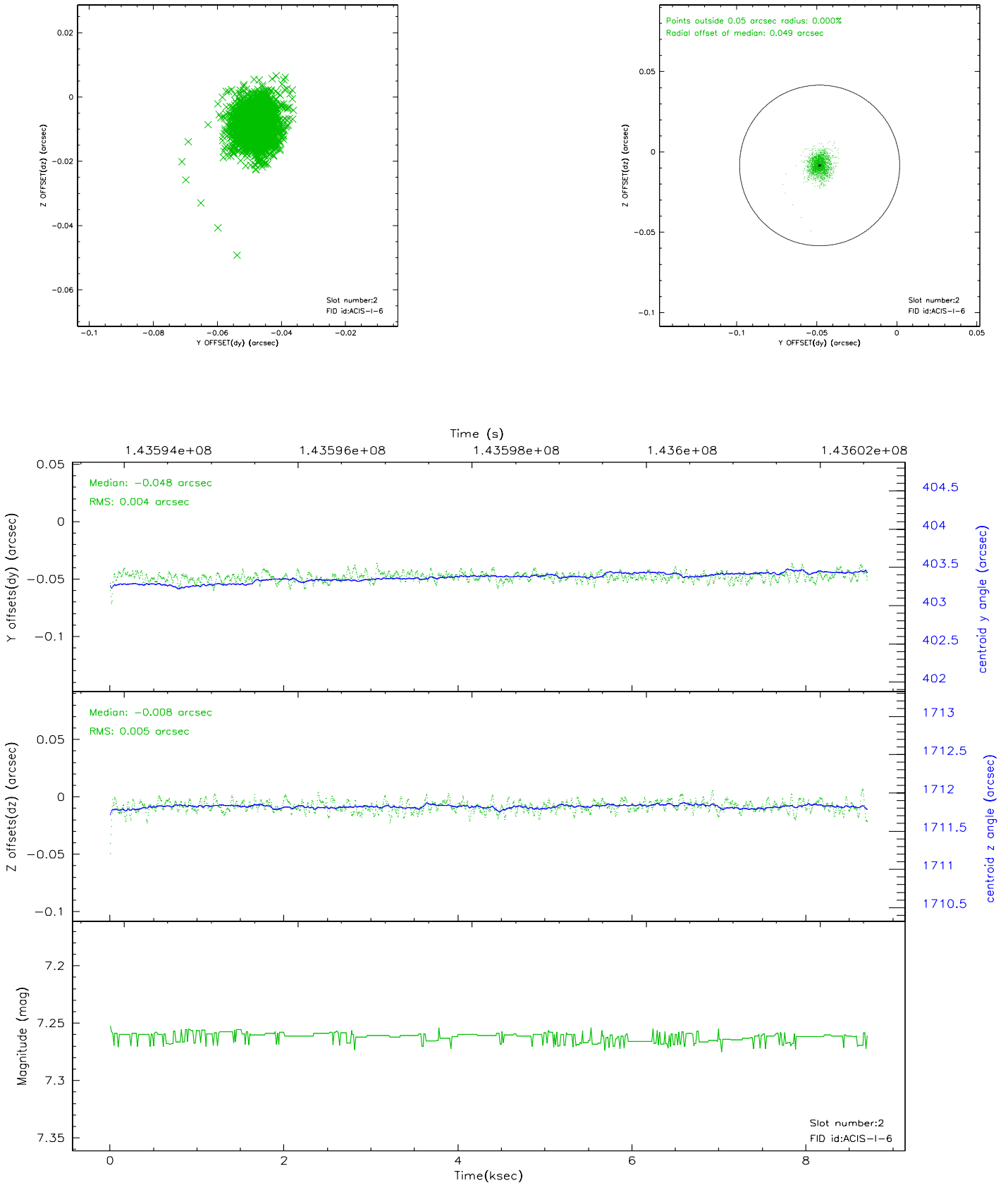
### 2.5.1 Slot 0



## 2.5.2 Slot 1

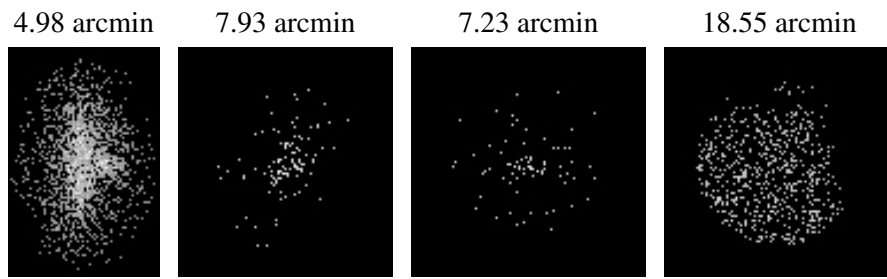


### 2.5.3 Slot 2





### 3 Point Sources



## A Summary

### A.1 Status

V&V Scientist	Jen Lauer
V&V Date (YYYY-MM-DD)	2006.09.26
V&V Edition	1
V&V Disposition and Status	OK
V&V Charge Time	7.766

### A.2 Comments