

V&V Reference Report

L2 ASCDS Version : 7.6.8.1

Observation 2932 - L2 Version 001
Chandra X-Ray Center

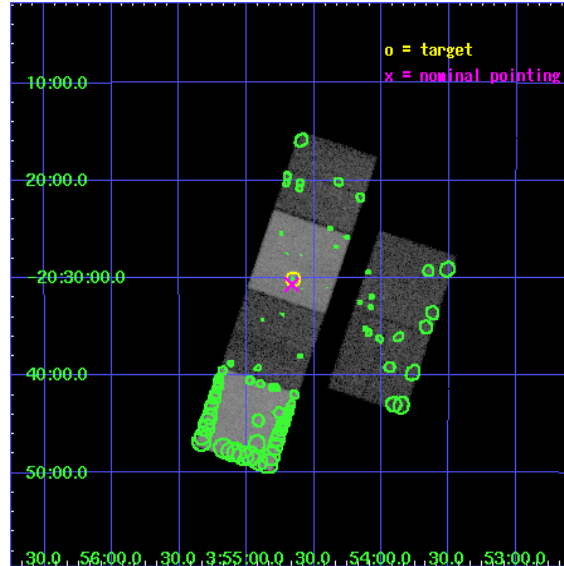
L2 Processing Date : Aug 31 2006

Contents

1	Front	2
2	OBI	3
2.1	OBI	3
2.1.1	Images	3
2.1.2	Bias	3
2.1.3	Parameters	4
2.1.4	Events	4
2.2	Compared Parameters	5
2.3	Aspect	6
2.4	Star Slots	9
2.4.1	Slot 3	9
2.4.2	Slot 4	10
2.4.3	Slot 5	11
2.4.4	Slot 6	12
2.4.5	Slot 7	13
2.5	FID Slots	14
2.5.1	Slot 0	14
2.5.2	Slot 1	15
2.5.3	Slot 2	16
3	Point Sources	17
A	Summary	18
A.1	Status	18
A.2	Comments	18

1 Front

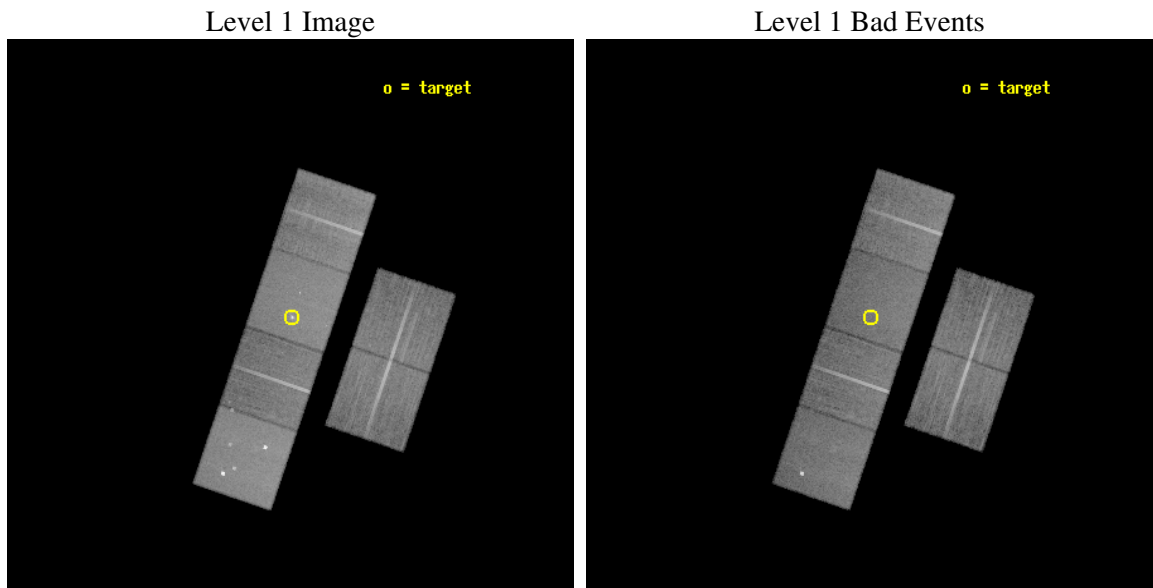
seq_num	600269
obs_id	2932
title	RESOLVING THE ORIGIN OF X-RAY EMISSION IN A COMPLETE SAMPLE OF LOCAL STARBURST-DRIVEN SUPERWINDS
observer	Dr David Strickland
object	NGC 1482
dtcycle	0
cycle	P
ra_targ	58.664583
dec_targ	-20.501944
ra_nom	58.666128798775
dec_nom	-20.511549106684
roll_nom	288.74518459113
revision	2
ontime	28556.800026596
livetime	28195.196629818
ontime2	28556.800026596
ontime3	28553.55906634
ontime5	28556.800026596
ontime6	28556.800026596
ontime7	28556.800026596
ontime8	28553.559036419
l2events	278956



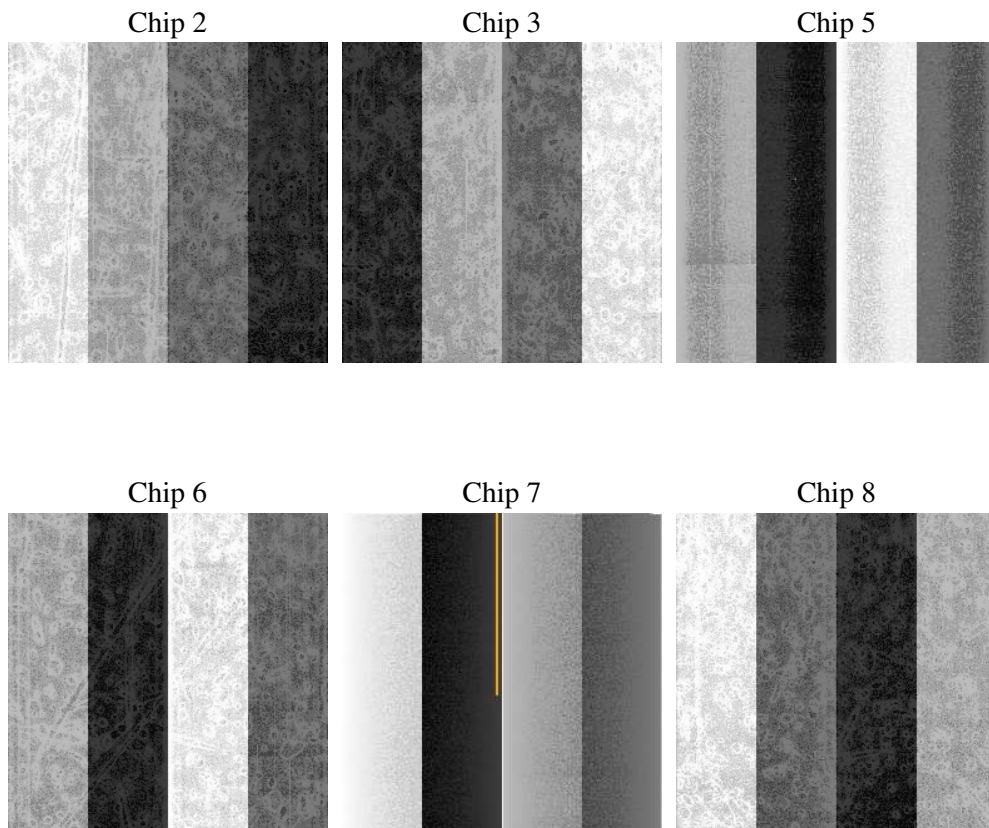
2 OBI

2.1 OBI

2.1.1 Images



2.1.2 Bias



2.1.3 Parameters

obi_num	0
ascdsver	7.6.8.1
caldsver	3.2.3
date	2006-08-31T09:21:02
revision	2

sched_exp_time	28600.000000
ontime	28562.929202184
ontime2	28562.929202184
ontime3	28559.688241929
ontime5	28562.929202184
ontime6	28562.929202184
ontime7	28562.929202184
ontime8	28559.688212007
l1events	1287130

2.1.4 Events

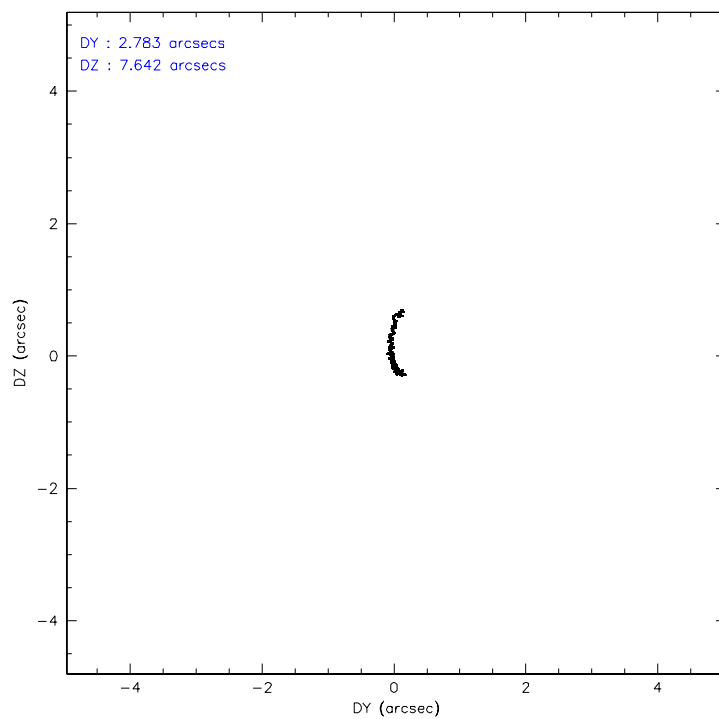
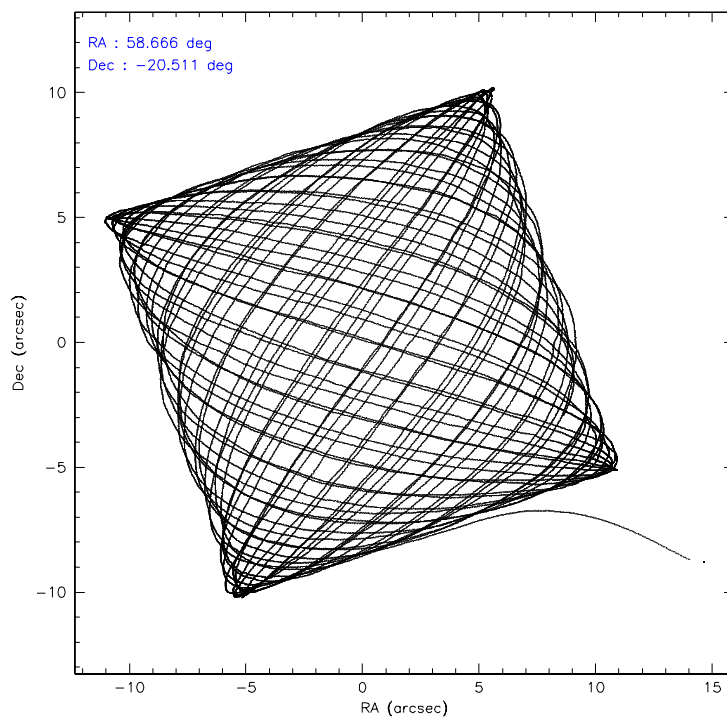
	ccd 2	ccd 3	ccd 5	ccd 6	ccd 7	ccd 8
level 1 events	185238	178089	275090	178941	241853	227919
rejected events	164625	157597	150019	158212	145583	182314
rejected %	88%	88%	54%	88%	60%	79%

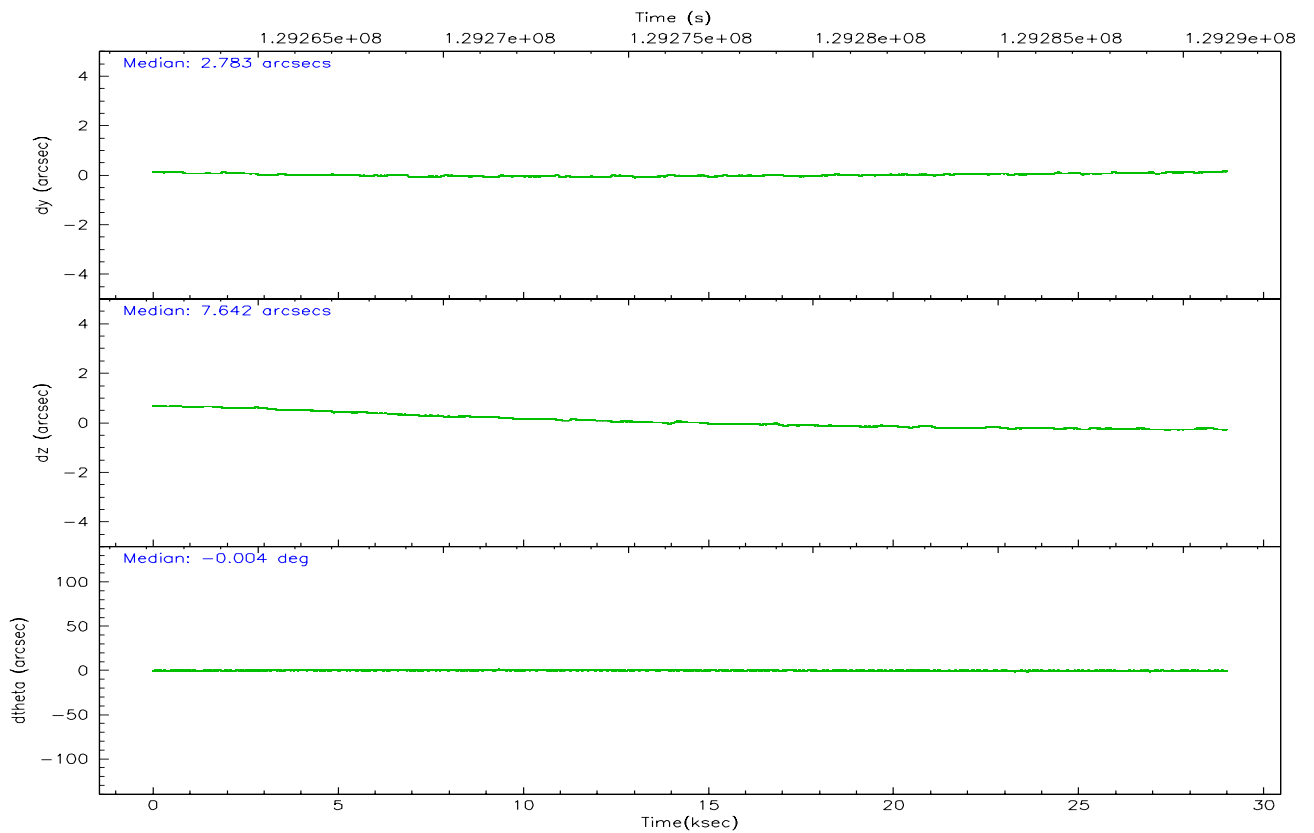
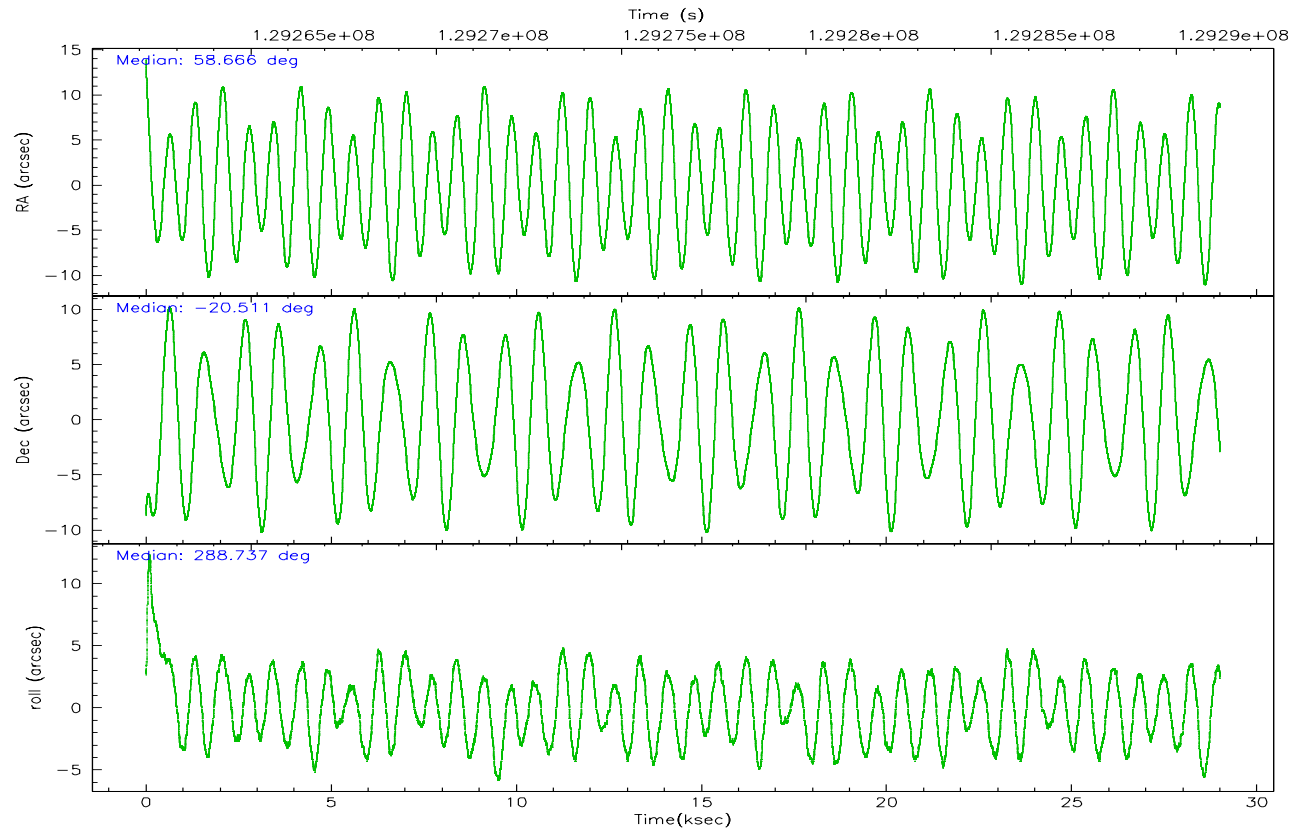
	ccd 2	ccd 3	ccd 5	ccd 6	ccd 7	ccd 8
grade 0 events	8814	8759	14890	8332	7318	14233
	4%	4%	5%	4%	3%	6%
grade 1 events	91	77	236	72	145	140
	0%	0%	0%	0%	0%	0%
grade 2 events	4460	4096	38423	4177	23741	10071
	2%	2%	13%	2%	9%	4%
grade 3 events	1911	2073	2808	2002	5266	4793
	1%	1%	1%	1%	2%	2%
grade 4 events	1890	1875	2684	2019	4969	4519
	1%	1%	0%	1%	2%	1%
grade 5 events	6384	7164	13453	7643	15337	9874
	3%	4%	4%	4%	6%	4%
grade 6 events	3541	3695	66291	4202	54998	11996
	1%	2%	24%	2%	22%	5%
grade 7 events	158147	150350	136305	150494	130079	172293
	85%	84%	49%	84%	53%	75%

2.2 Compared Parameters

Parameter	Planned	Actual	Parameter	Planned	Actual
Instrument	ACIS	ACIS	Obspar format version number	6	6
Detector	ACIS-235678	ACIS-235678	Obspar file type	PREDICTED	ACTUAL
Grating	NONE	NONE	Obspar update status	NONE	UPDATED
Data mode	FAINT	FAINT	On-chip summing requested	N	N
Observation mode	POINTING	POINTING	Subarray requested	NONE	NONE
Pointing RA	58.644022	58.66612879877506	Alternating exposures requested	N	N
Pointing Dec	-20.493830	-20.51154910668436	Primary exposure time	0.000000	3.2
Pointing Roll	288.580818	288.745184591126			
SIM focus pos (mm)	-0.684267	-0.6828225247311905			
SIM defocus (mm)	0	0.001444936568705701			
SIM translation stage pos (mm)	-190.132523	-190.1425803651734			
SIM translation stage offset (mm)	0	0.01005778216563158			
Observation start time	129262578.184000	129261504.13383			
Observation start date	2002-02-05T02:15:14	2002-02-05T01:58:24			
Observation end time	129291178.184000	129291934.84756			
Observation end date	2002-02-05T10:11:54	2002-02-05T10:25:34			
Read mode	TIMED	TIMED			

2.3 Aspect



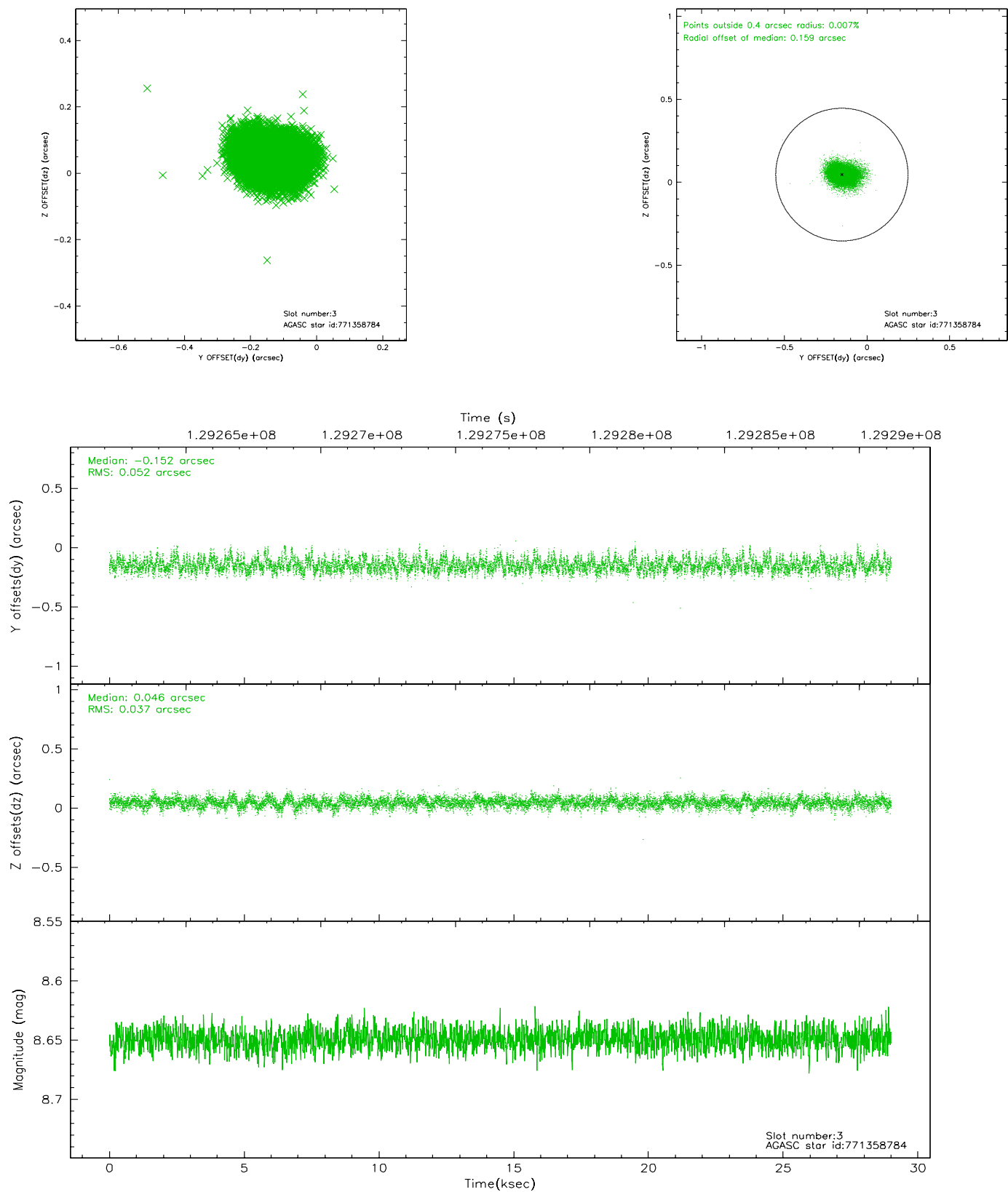


Slot Statistics

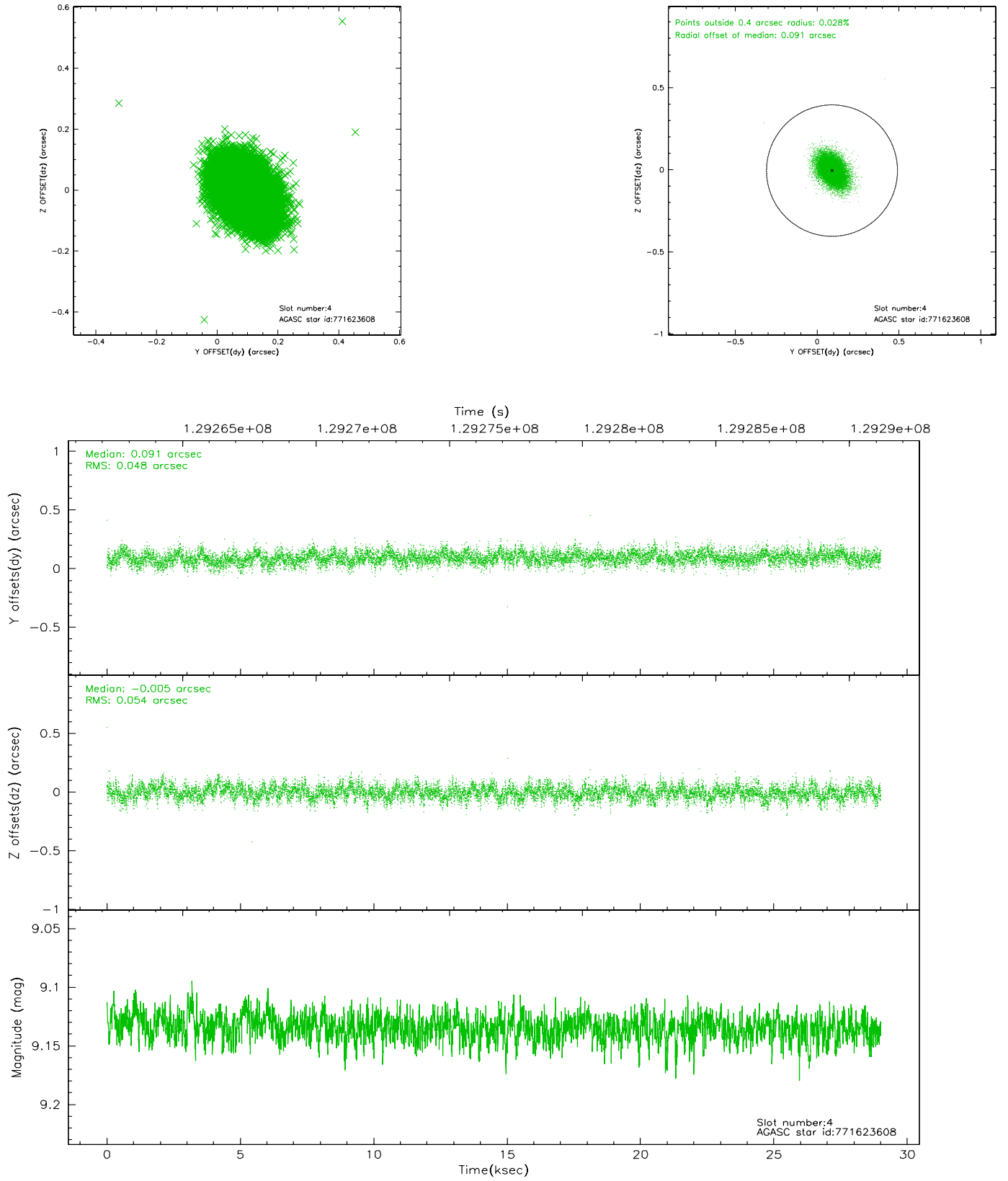
slot	status	id	mag	n_pts	med_dy	med_dz	dr1	dr2	ra	dec	mean_y	mean_z
0	FID	ACIS-S-2	7.11	7076	0.007	0.027	0.008	0.013	0.000000	0.000000	-755.43	-1728.83
1	FID	ACIS-S-4	7.20	7075	-0.089	-0.011	0.006	0.010	0.000000	0.000000	2157.72	179.53
2	FID	ACIS-S-5	7.24	7076	0.051	-0.008	0.008	0.012	0.000000	0.000000	-1808.12	173.30
3	GUIDE	771358784	8.65	14146	-0.152	0.046	0.067	0.112	58.723282	-19.962694	-1726.43	863.57
4	GUIDE	771623608	9.13	14147	0.091	-0.005	0.076	0.128	58.376532	-21.013422	1488.20	-1447.76
5	GUIDE	771627200	9.26	14143	-0.041	-0.014	0.085	0.144	58.158773	-20.824384	611.12	-1927.38
6	GUIDE	771367232	8.93	14149	-0.101	-0.019	0.089	0.145	58.692643	-19.811430	-2275.51	938.85
7	GUIDE	771755200	9.95	14088	0.201	-0.012	0.103	0.169	59.058353	-20.802643	1500.41	967.46

2.4 Star Slots

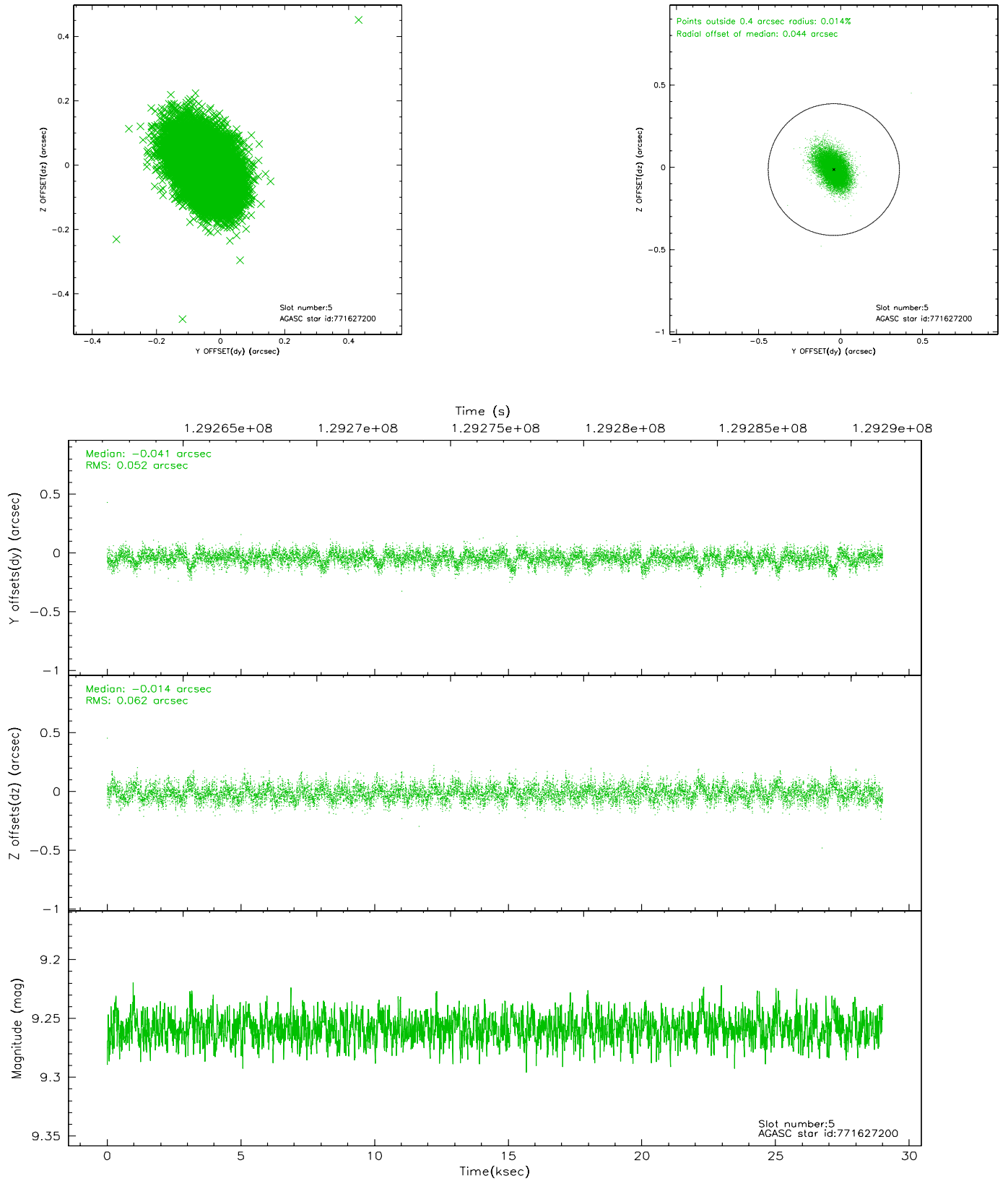
2.4.1 Slot 3



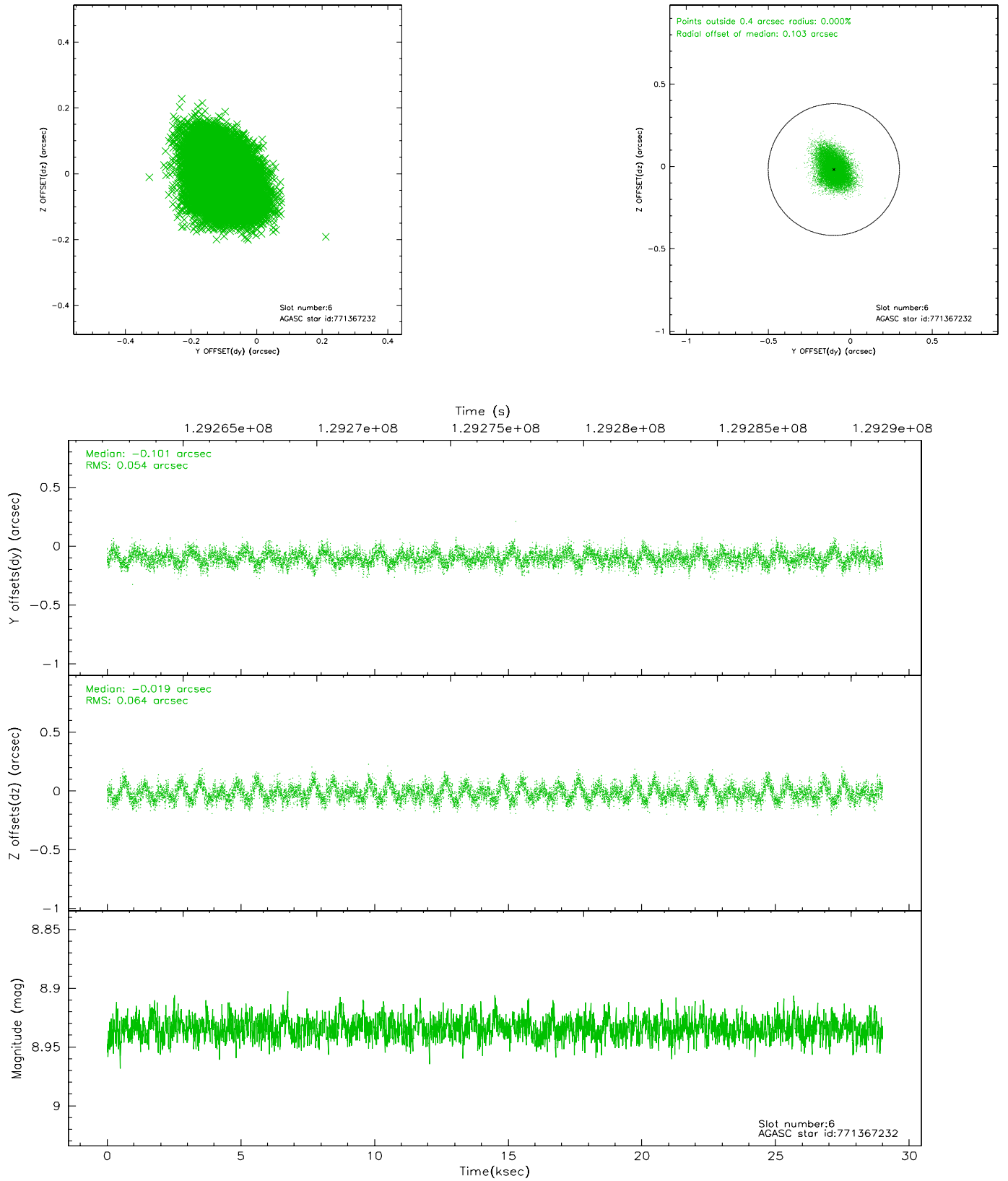
2.4.2 Slot 4



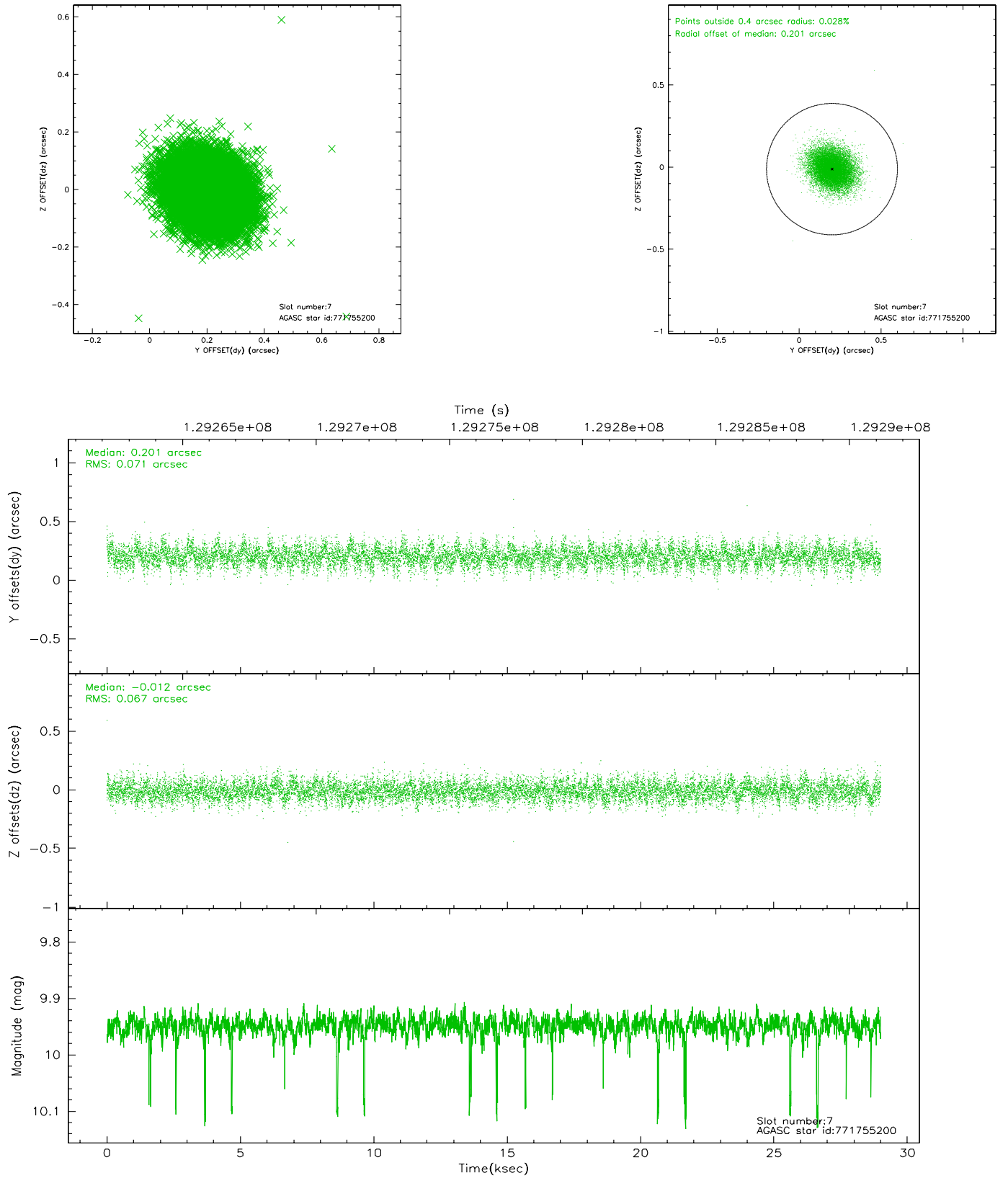
2.4.3 Slot 5



2.4.4 Slot 6

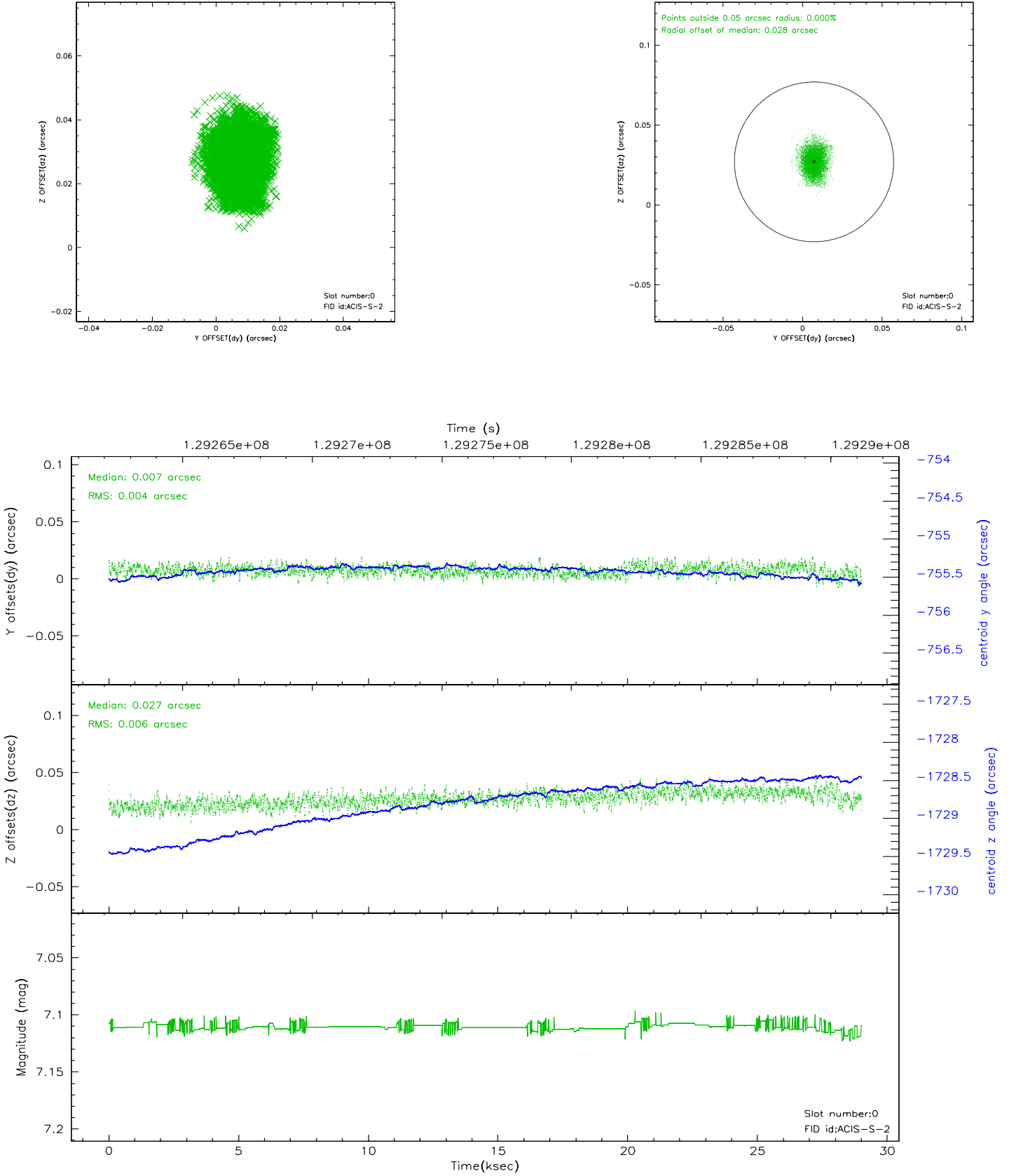


2.4.5 Slot 7

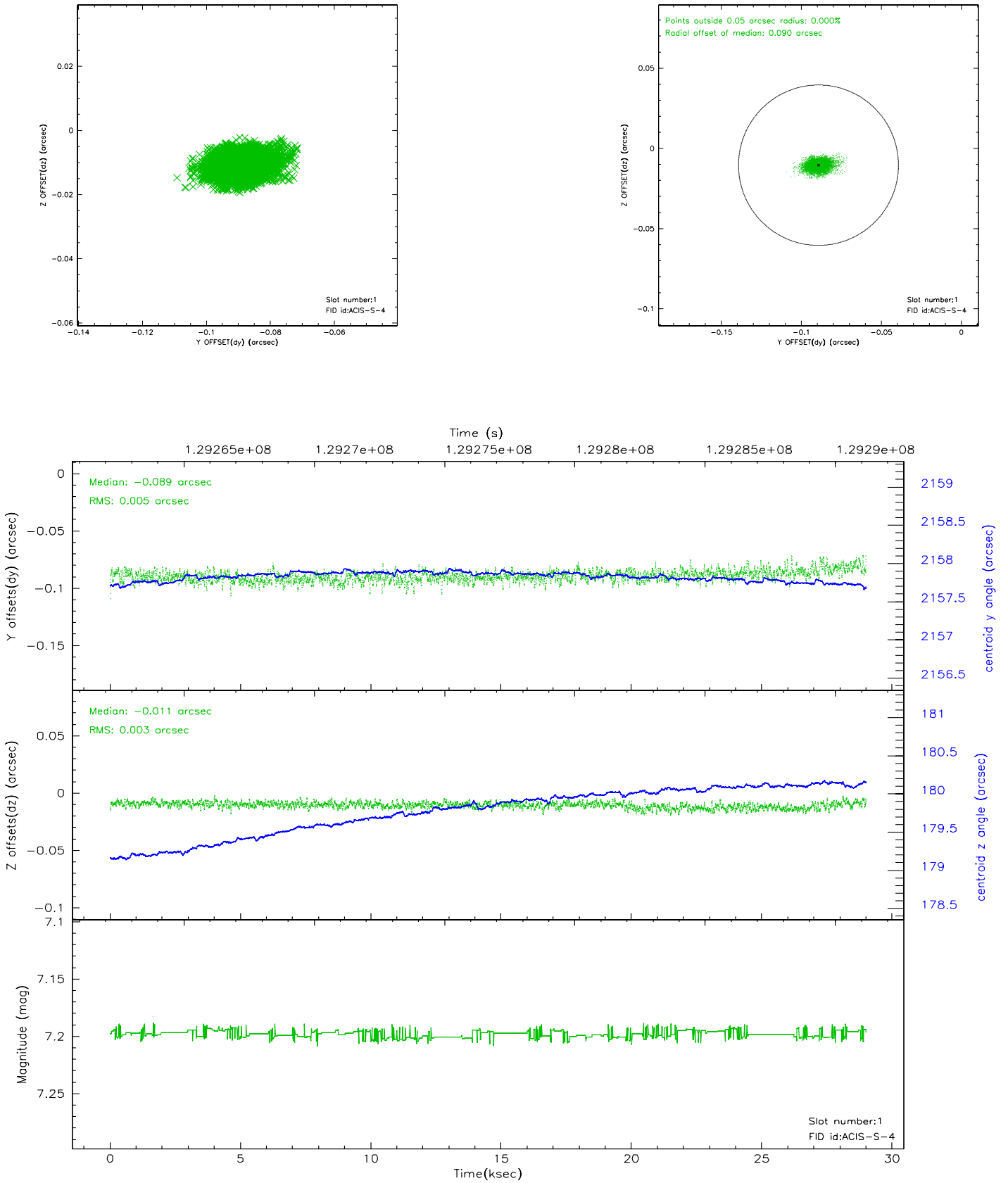


2.5 FID Slots

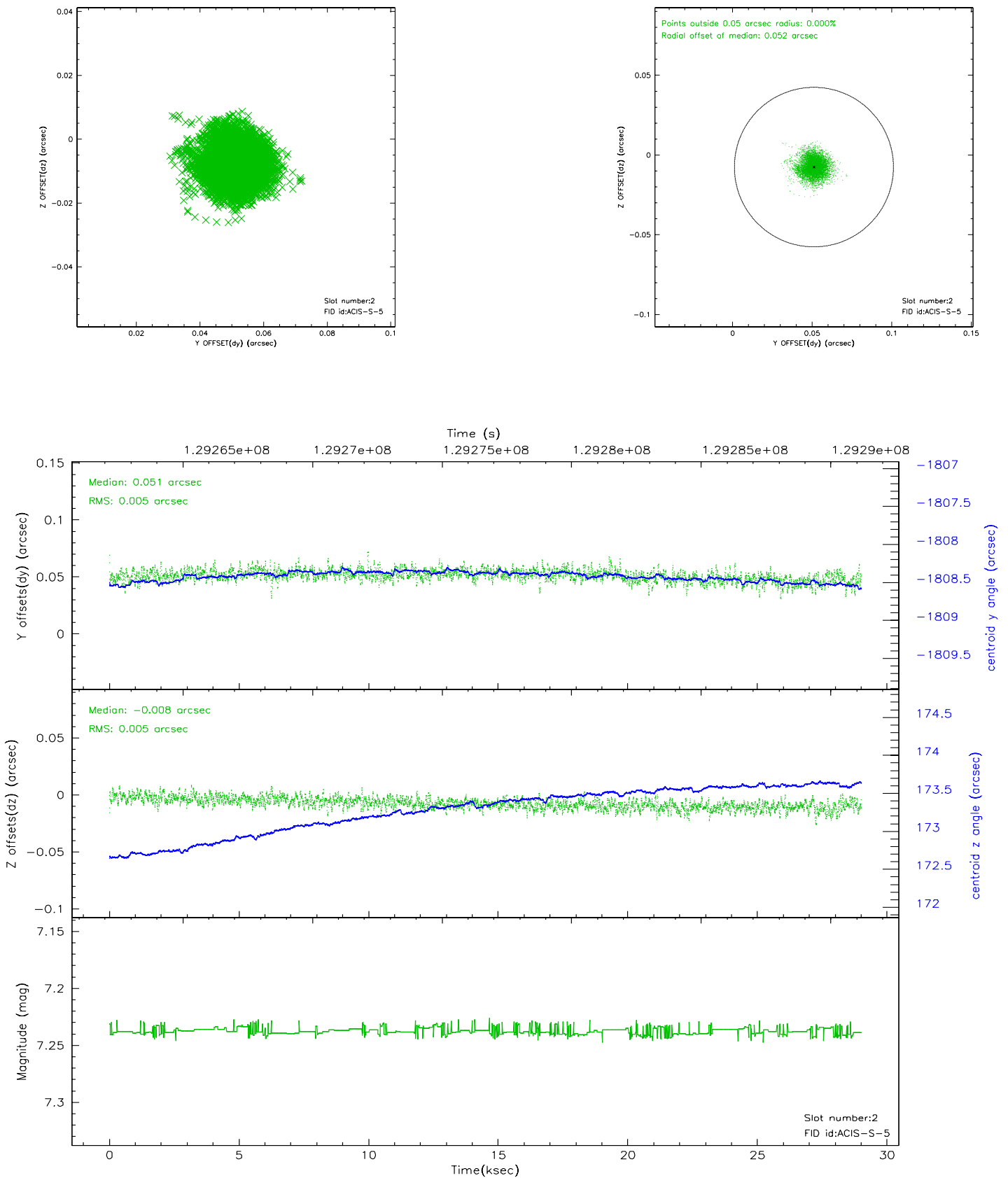
2.5.1 Slot 0



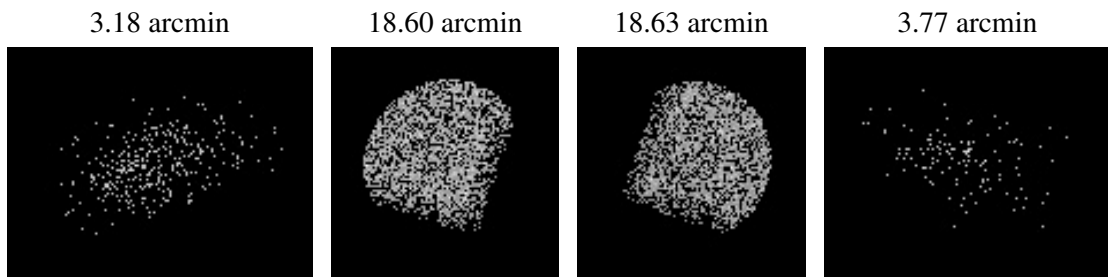
2.5.2 Slot 1



2.5.3 Slot 2



3 Point Sources



A Summary

A.1 Status

V&V Scientist	Jen Lauer
V&V Date (YYYY-MM-DD)	2006.08.31
V&V Edition	1
V&V Disposition and Status	OK
V&V Charge Time	28.56

A.2 Comments