

V&V Reference Report

L2 ASCDS Version : 7.6.9

Observation 2922 - L2 Version 001
Chandra X-Ray Center

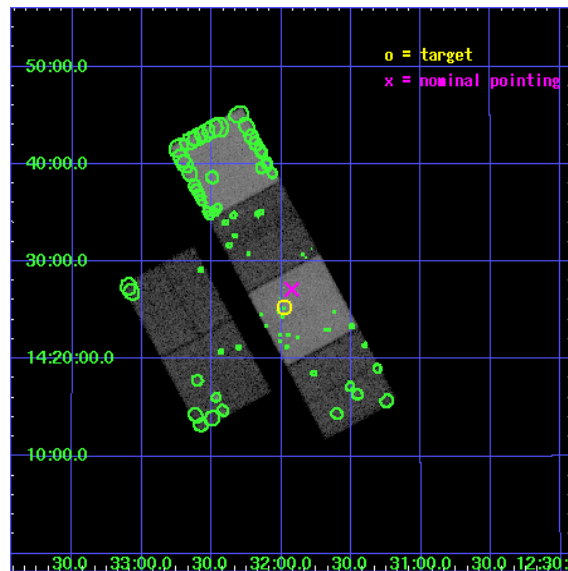
L2 Processing Date : Oct 14 2006

Contents

1	Front	2
2	OBI	3
2.1	OBI	3
2.1.1	Images	3
2.1.2	Bias	3
2.1.3	Parameters	4
2.1.4	Events	4
2.2	Compared Parameters	5
2.3	Aspect	6
2.4	Star Slots	9
2.4.1	Slot 3	9
2.4.2	Slot 4	10
2.4.3	Slot 5	11
2.4.4	Slot 6	12
2.4.5	Slot 7	13
2.5	FID Slots	14
2.5.1	Slot 0	14
2.5.2	Slot 1	15
2.5.3	Slot 2	16
3	Point Sources	17
A	Summary	18
A.1	Status	18
A.2	Comments	18

1 Front

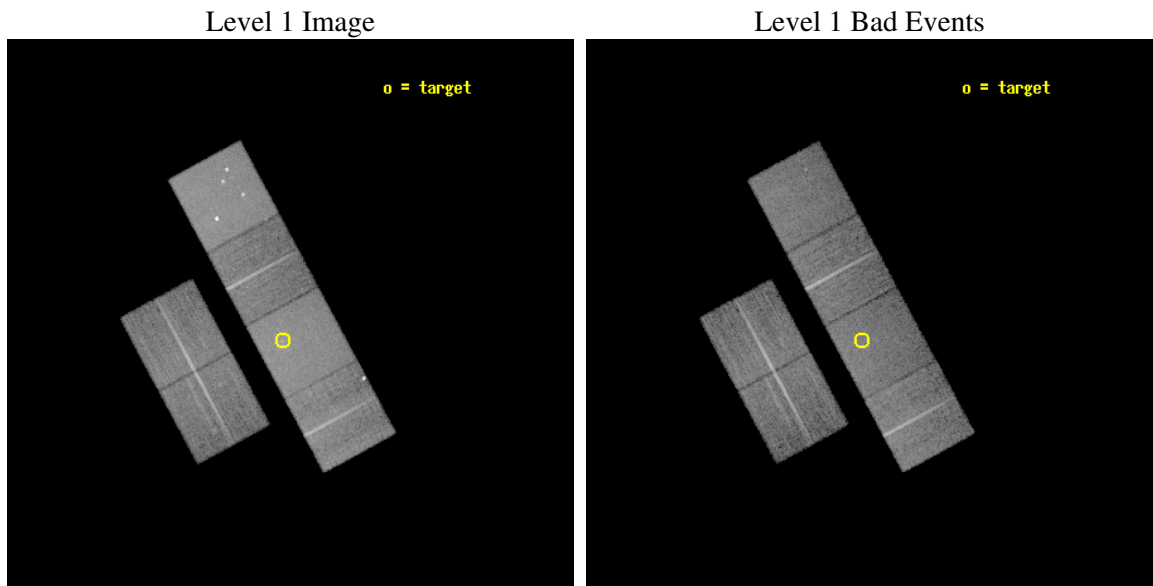
seq_num	600259
obs_id	2922
title	STUDY OF THE ISM-STRIPPING PROCESS IN THE VIRGO SPIRAL NGC 4501 (M88)
observer	Prof. Hans Boehringer
object	NGC 4501
dtcycle	0
cycle	P
ra_targ	187.99375
dec_targ	14.422222
ra_nom	187.98125154622
dec_nom	14.452340340503
roll_nom	61.646582711323
revision	2
ontime	18099.199932575
livetime	17870.016964999
ontime2	18092.717952222
ontime3	18099.199932575
ontime5	18099.199932575
ontime6	18099.199932575
ontime7	18099.199932575
ontime8	18099.199932575
l2events	229427



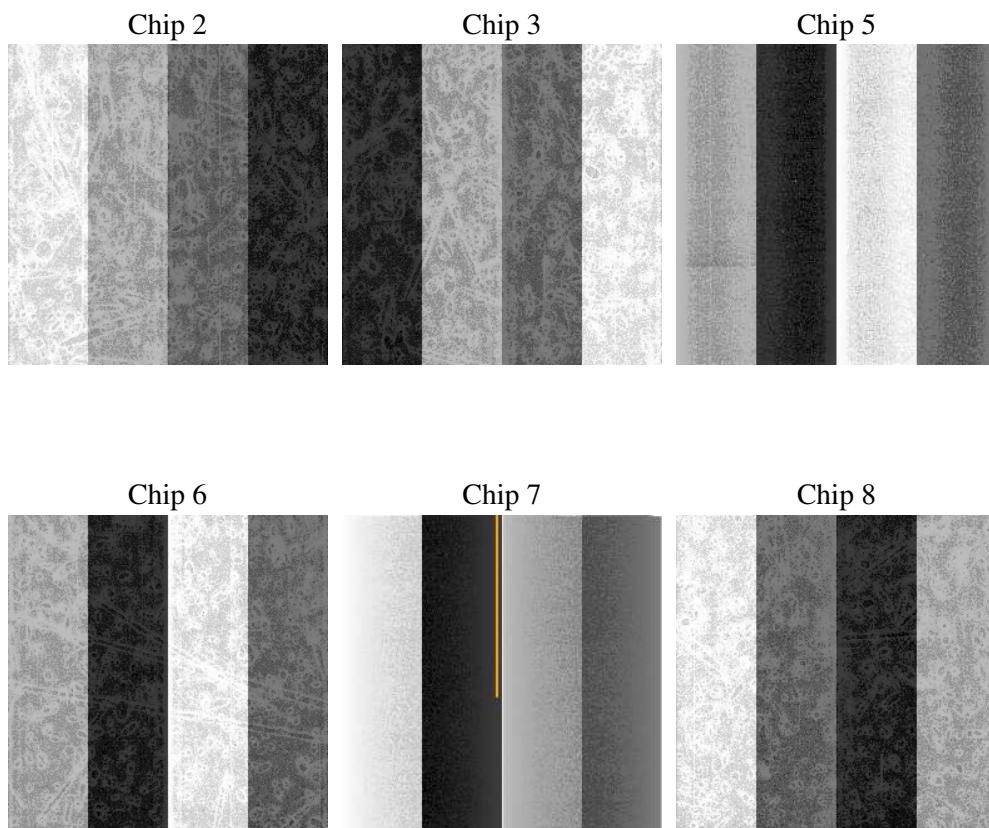
2 OBI

2.1 OBI

2.1.1 Images



2.1.2 Bias



2.1.3 Parameters

obi_num	0
ascdsver	7.6.9
caldsver	3.2.3
date	2006-10-14T21:28:57
revision	2

sched_exp_time	18000.000000
ontime	18104.227155447
ontime2	18097.745175093
ontime3	18104.227155447
ontime5	18104.227155447
ontime6	18104.227135539
ontime7	18104.227155447
ontime8	18104.227135539
l1events	852000

2.1.4 Events

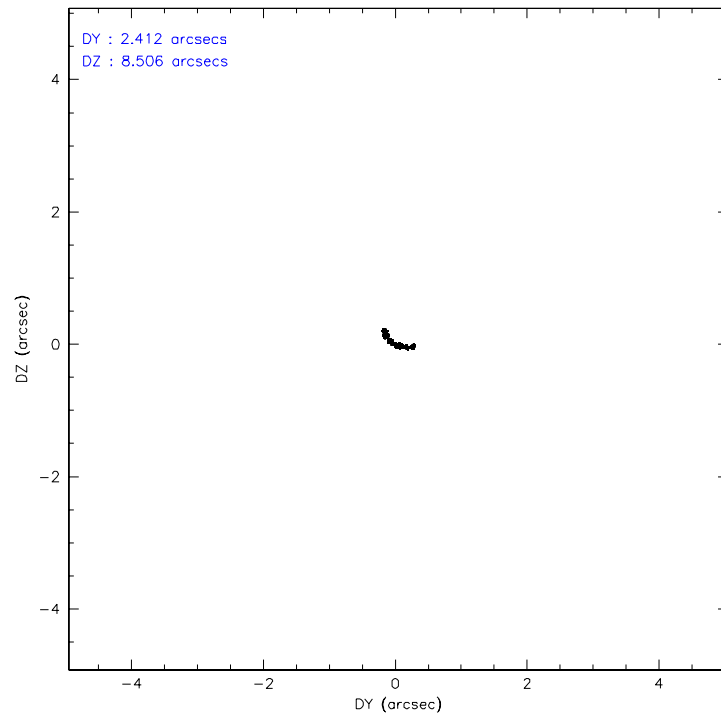
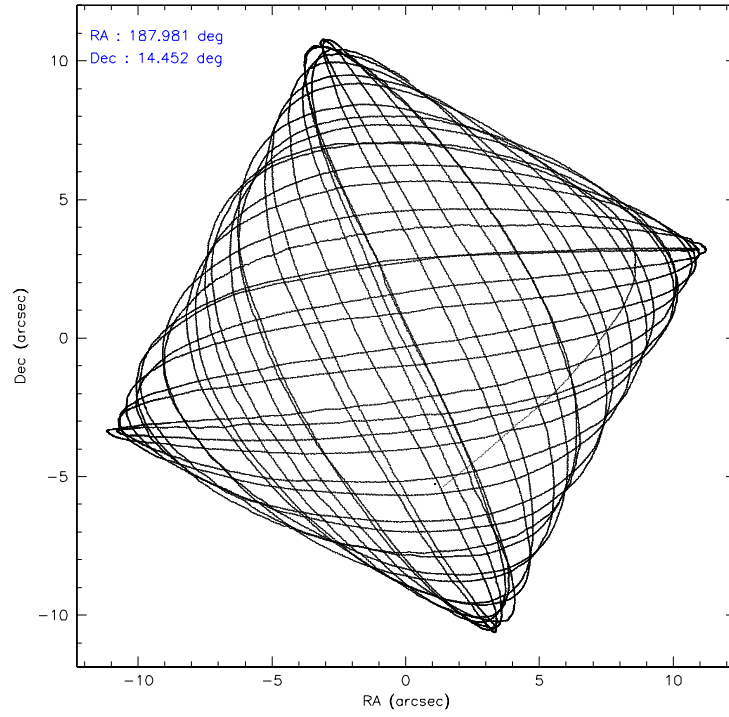
	ccd 2	ccd 3	ccd 5	ccd 6	ccd 7	ccd 8
level 1 events	118998	111578	187067	116903	170640	146814
rejected events	101352	94068	91731	97919	93235	110231
rejected %	85%	84%	49%	83%	54%	75%

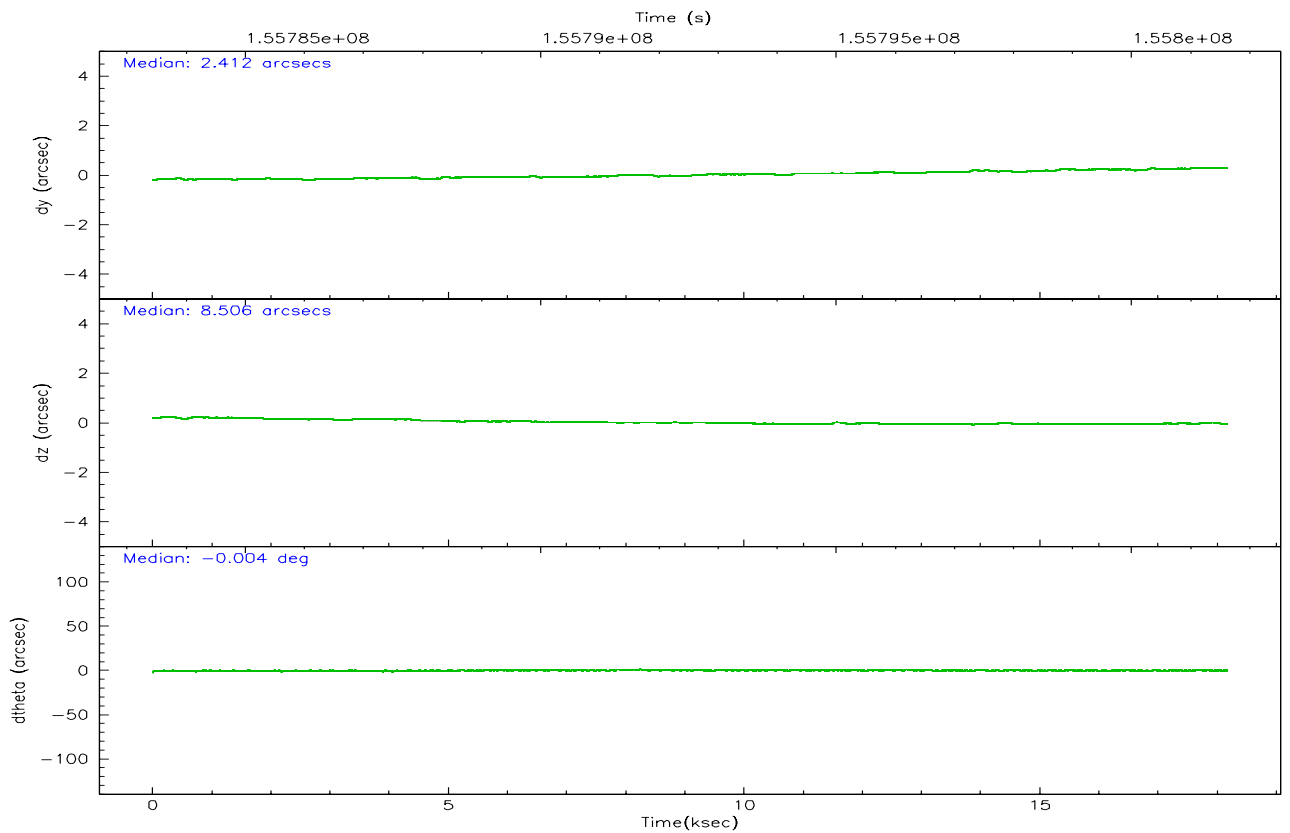
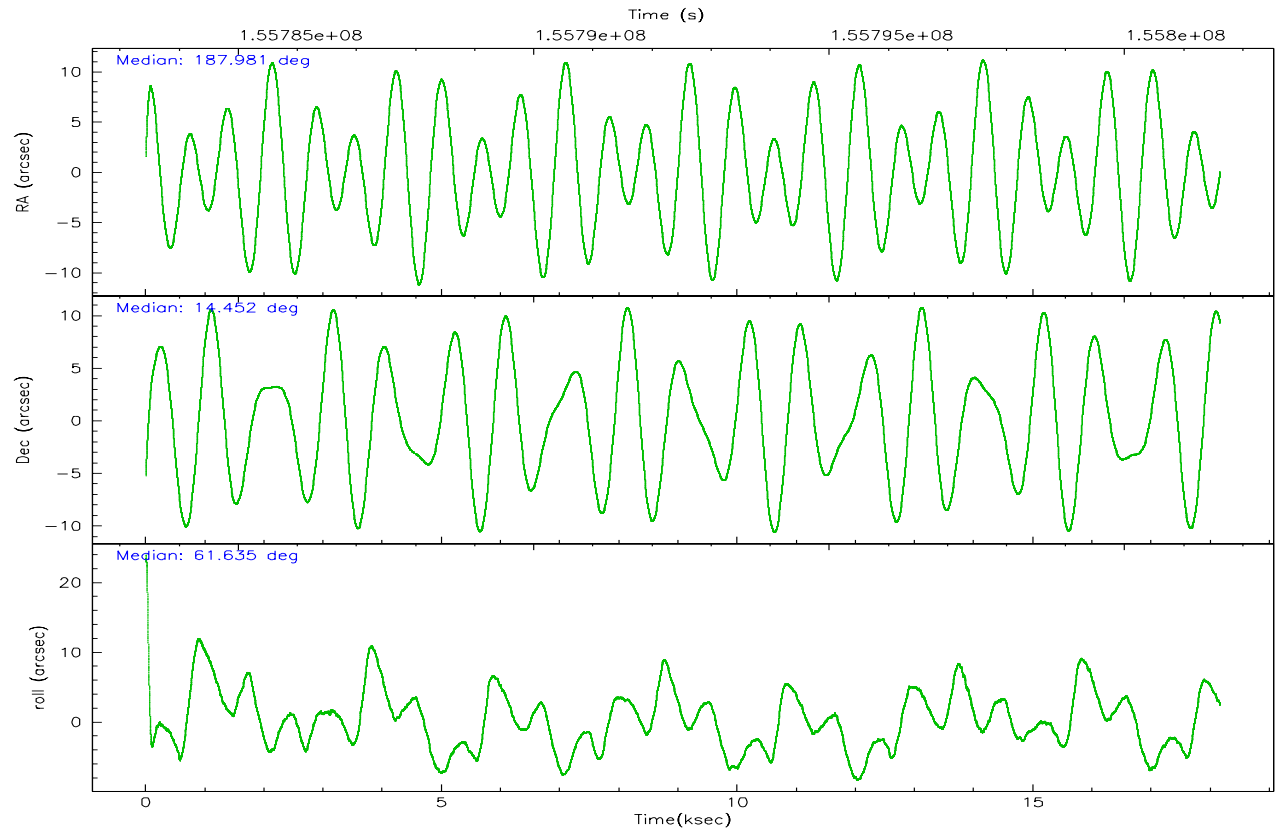
	ccd 2	ccd 3	ccd 5	ccd 6	ccd 7	ccd 8
grade 0 events	9376	9357	14903	9936	6886	15379
	7%	8%	7%	8%	4%	10%
grade 1 events	85	93	344	69	92	108
	0%	0%	0%	0%	0%	0%
grade 2 events	3156	2985	27427	3301	18512	7003
	2%	2%	14%	2%	10%	4%
grade 3 events	1385	1349	2482	1437	4416	3335
	1%	1%	1%	1%	2%	2%
grade 4 events	1361	1366	2284	1399	4298	3079
	1%	1%	1%	1%	2%	2%
grade 5 events	4300	4605	8028	4896	9899	6437
	3%	4%	4%	4%	5%	4%
grade 6 events	2377	2459	48269	2917	43330	7793
	1%	2%	25%	2%	25%	5%
grade 7 events	96958	89364	83330	92948	83207	103680
	81%	80%	44%	79%	48%	70%

2.2 Compared Parameters

Parameter	Planned	Actual	Parameter	Planned	Actual
Instrument	ACIS	ACIS	Obspar format version number	6	6
Detector	ACIS-235678	ACIS-235678	Obspar file type	PREDICTED	ACTUAL
Grating	NONE	NONE	Obspar update status	NONE	UPDATED
Data mode	VFAINT	VFAINT	Number of optional ACIS chips dropped	0	0
Observation mode	POINTING	POINTING	On-chip summing requested	N	N
Pointing RA	187.982456	187.9812515462211	Subarray requested	NONE	NONE
Pointing Dec	14.425128	14.45234034050265	Alternating exposures requested	N	N
Pointing Roll	61.489641	61.64658271132251	Primary exposure time	0.000000	3.2
SIM focus pos (mm)	-0.684267	-0.6828225247311905			
SIM defocus (mm)	0	0.001444936568705701			
SIM translation stage pos (mm)	-190.132523	-190.1425803651734			
SIM translation stage offset (mm)	0	0.01005778216563158			
Observation start time	155783612.184000	155782582.25947			
Observation start date	2002-12-09T01:12:28	2002-12-09T00:56:22			
Observation end time	155801612.184000	155802093.64778			
Observation end date	2002-12-09T06:12:28	2002-12-09T06:21:33			
Read mode	TIMED	TIMED			

2.3 Aspect



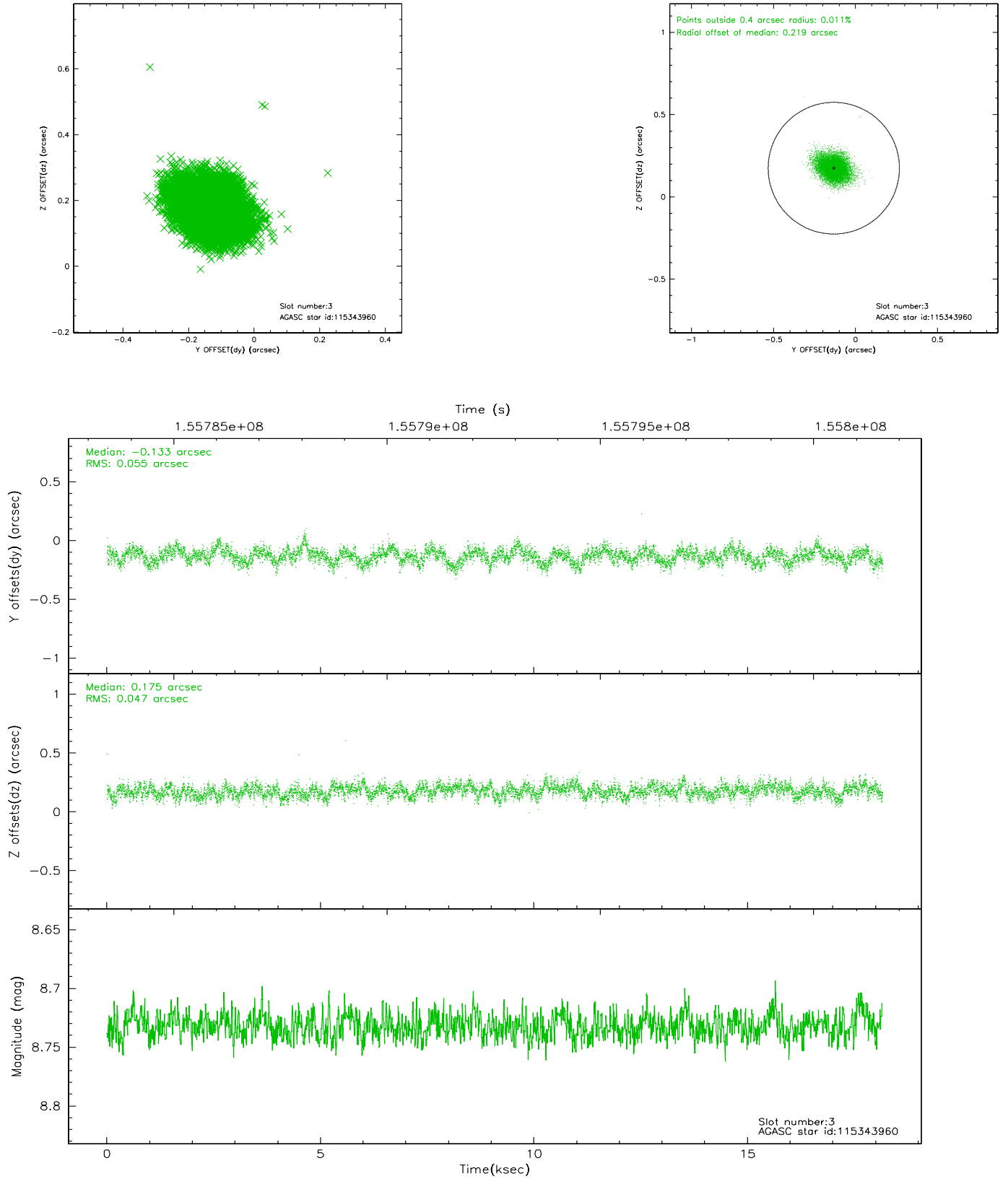


Slot Statistics

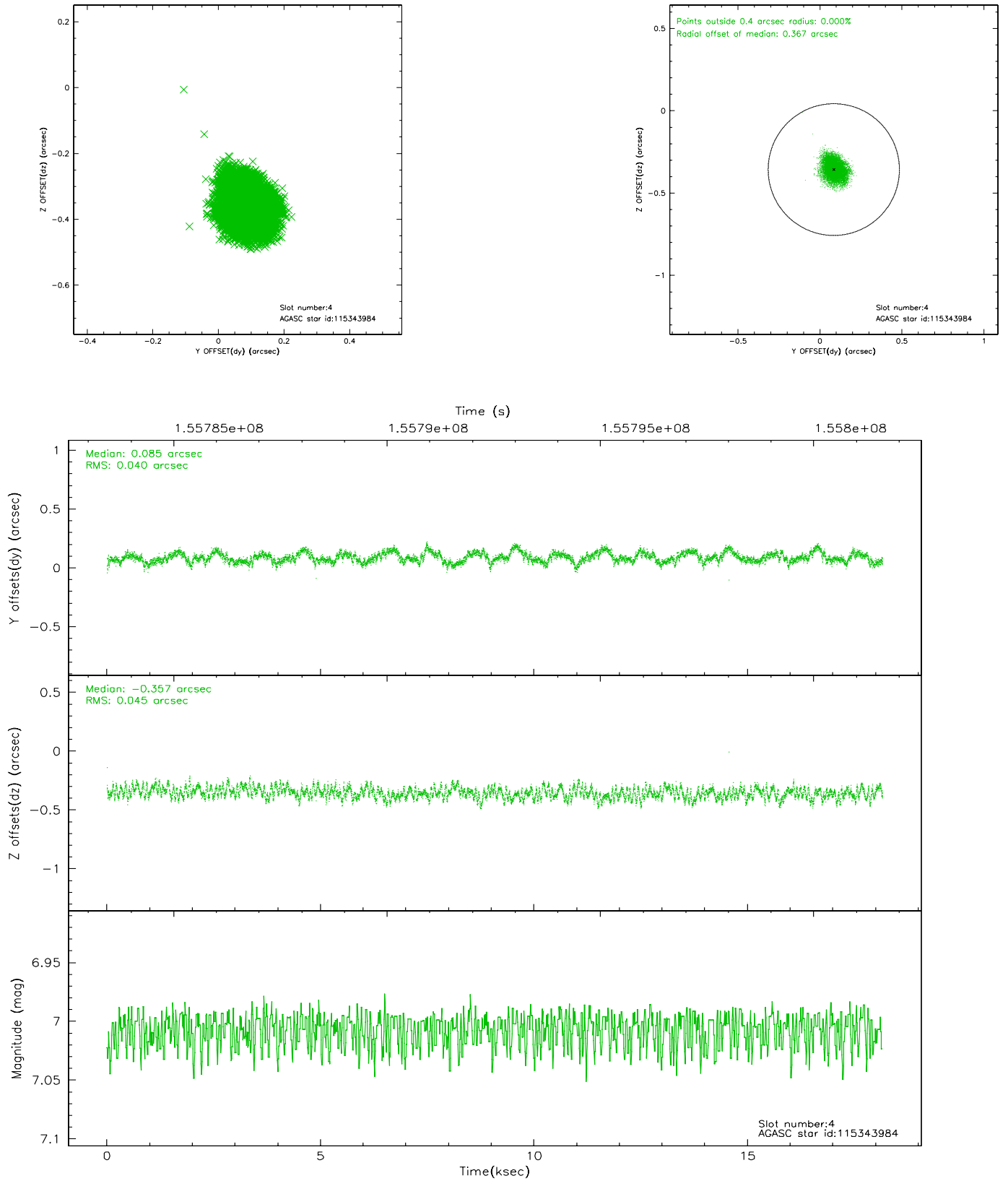
slot	status	id	mag	n_pts	med_dy	med_dz	dr1	dr2	ra	dec	mean_y	mean_z
0	FID	ACIS-S-2	7.11	4430	-0.005	0.019	0.012	0.023	0.000000	0.000000	-755.08	-1729.67
1	FID	ACIS-S-4	7.20	4429	-0.067	-0.003	0.013	0.033	0.000000	0.000000	2158.06	178.54
2	FID	ACIS-S-5	7.23	4431	0.038	-0.007	0.010	0.017	0.000000	0.000000	-1807.58	172.49
3	GUIDE	115343960	8.73	8860	-0.133	0.175	0.077	0.125	188.590007	14.643744	1703.43	-1481.58
4	GUIDE	115343984	7.01	8861	0.085	-0.357	0.065	0.101	187.445111	14.650185	-180.44	2032.34
5	GUIDE	115344184	9.93	8841	0.124	0.058	0.151	0.251	188.223378	14.673173	1184.90	-309.84
6	GUIDE	115344696	10.04	8854	-0.178	0.265	0.122	0.198	188.739926	14.495064	1484.74	-2196.79
7	GUIDE	115345056	9.43	8853	0.108	-0.145	0.111	0.183	187.860673	14.574305	268.67	629.50

2.4 Star Slots

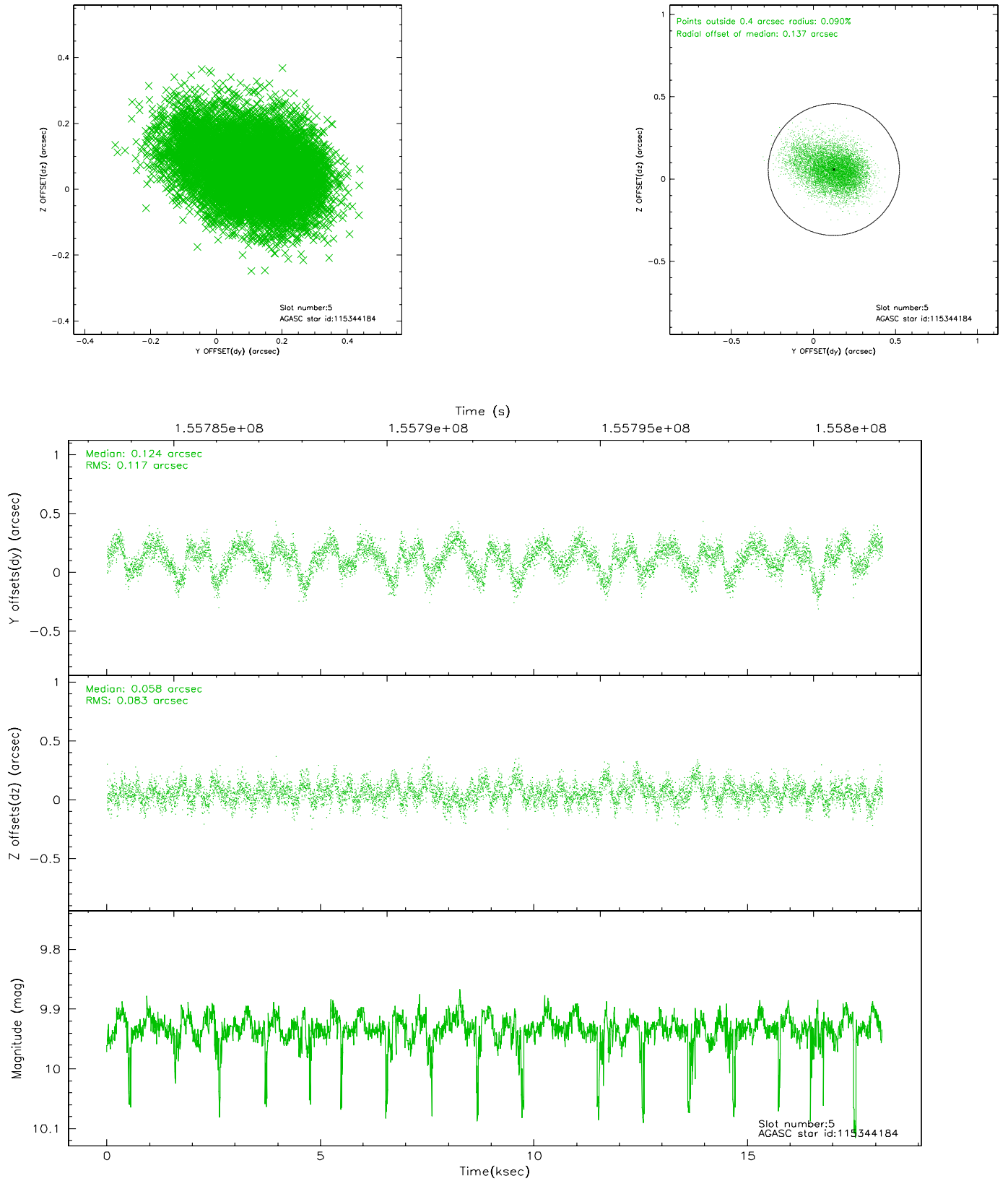
2.4.1 Slot 3



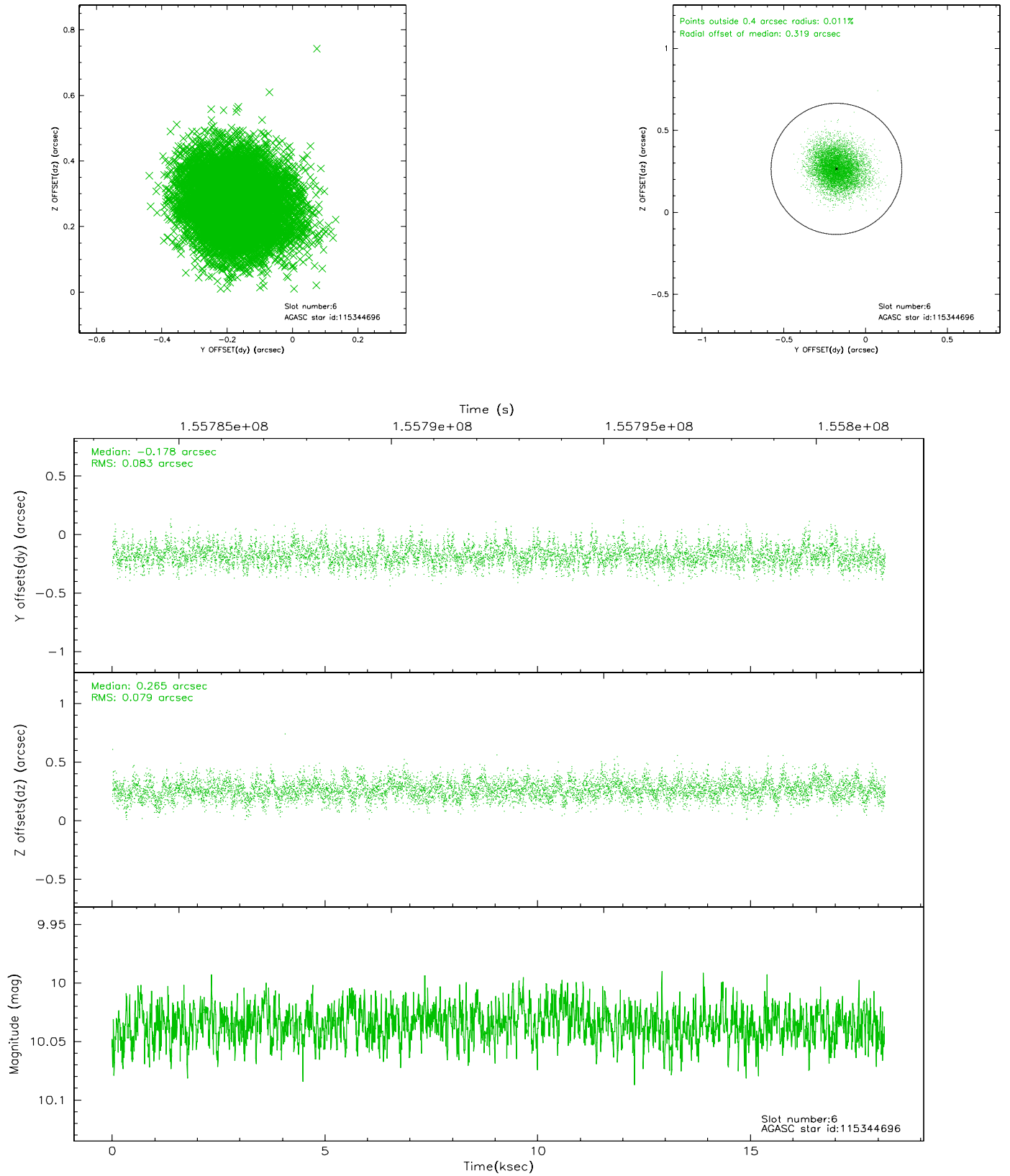
2.4.2 Slot 4



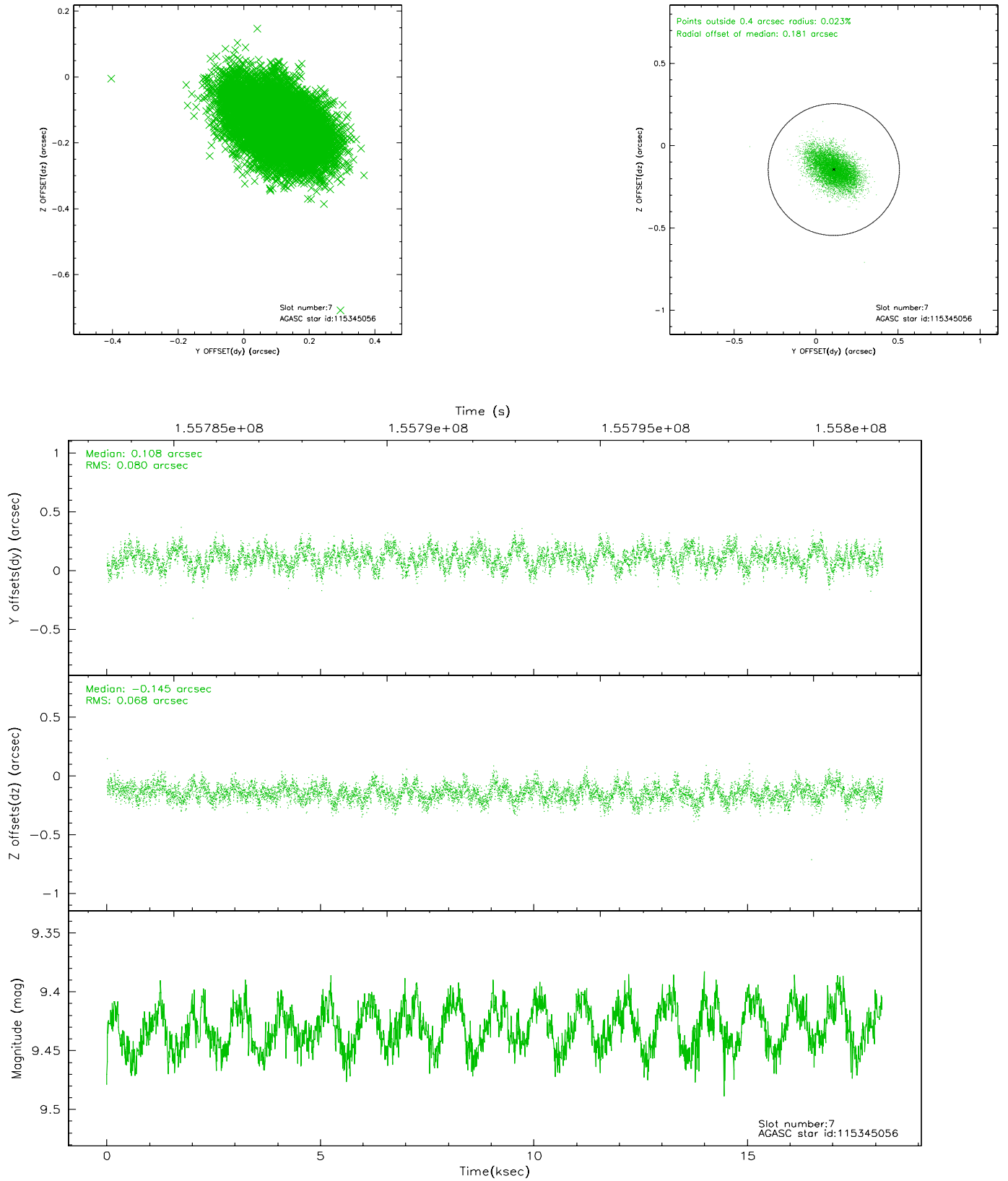
2.4.3 Slot 5



2.4.4 Slot 6

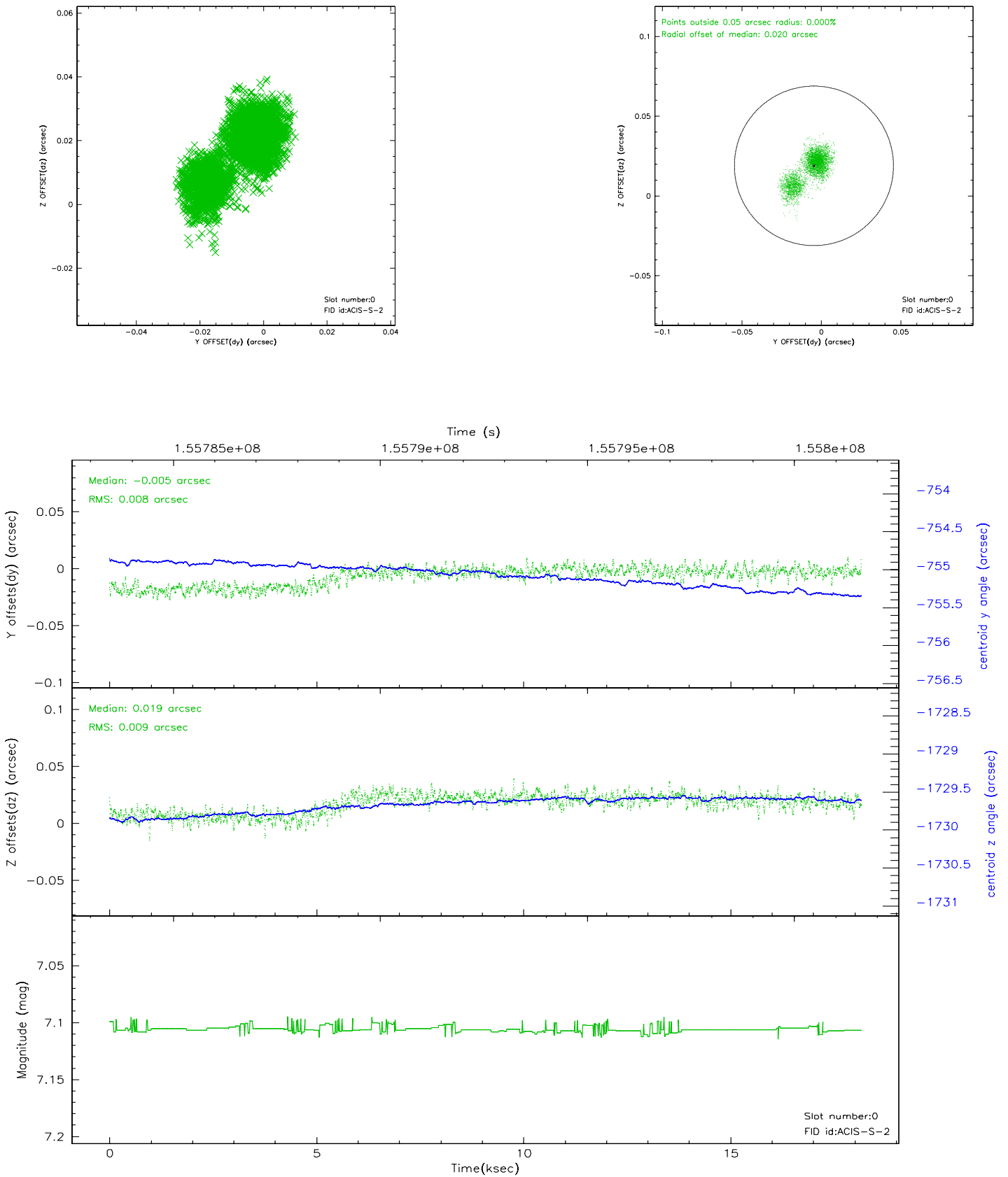


2.4.5 Slot 7

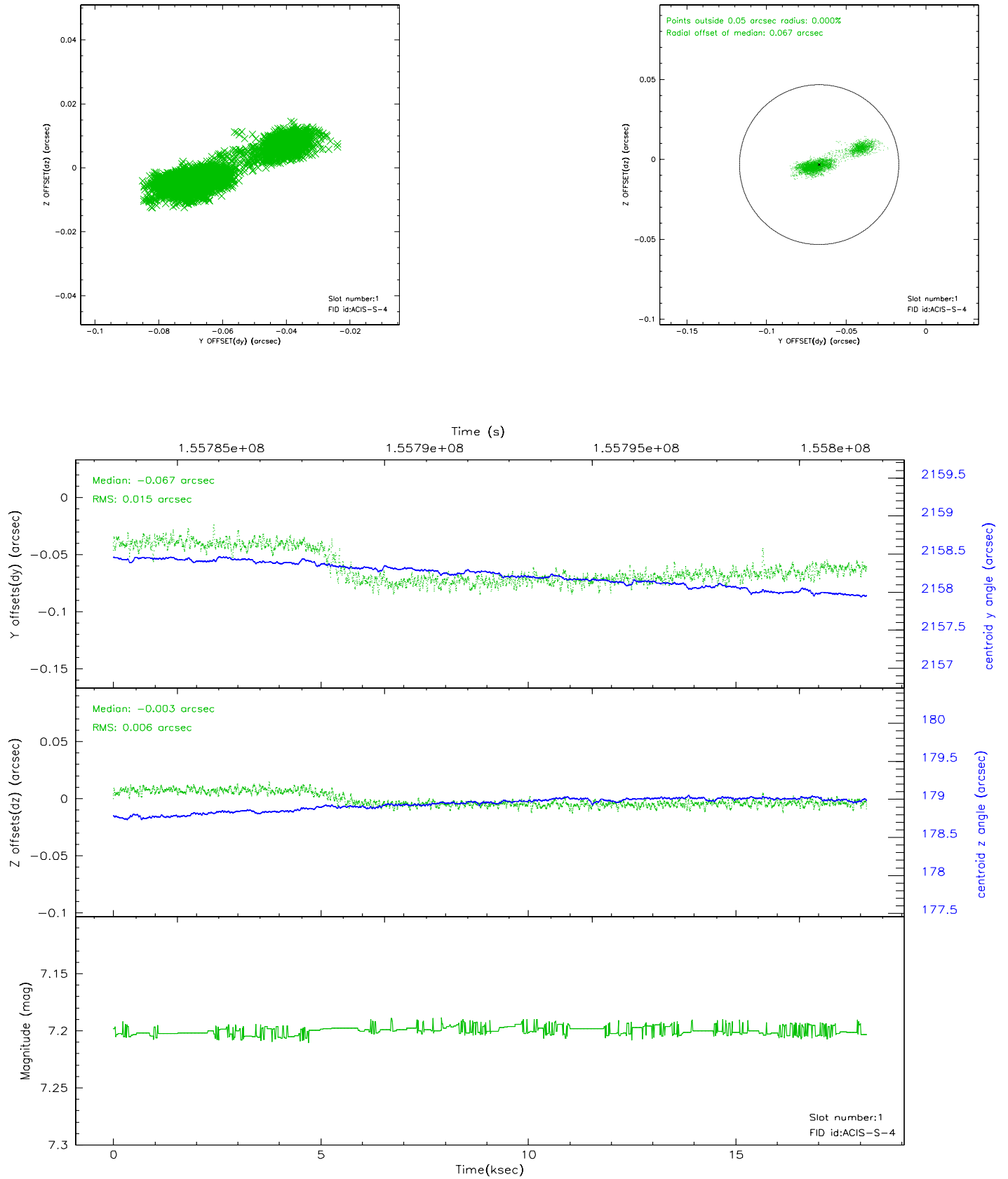


2.5 FID Slots

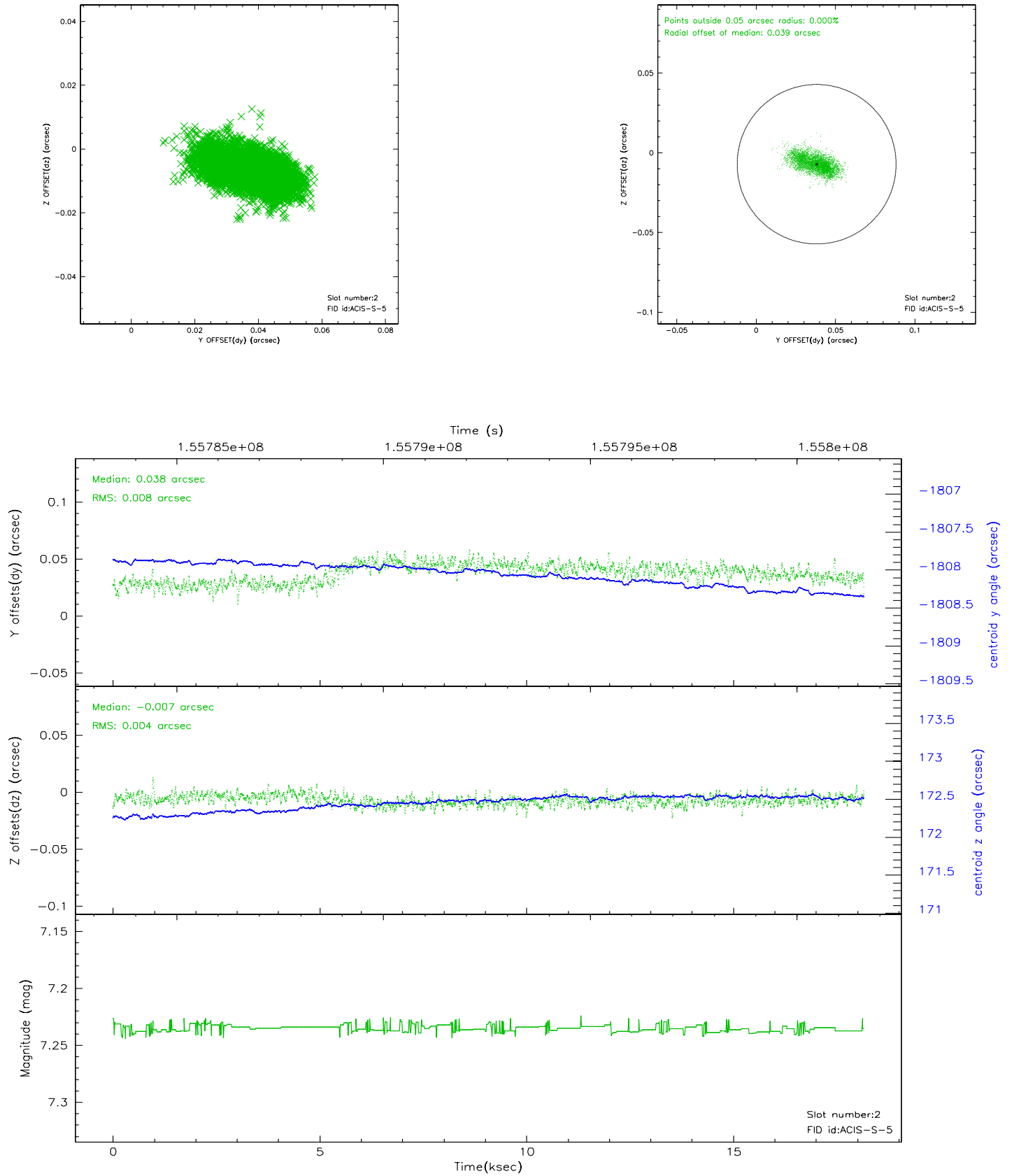
2.5.1 Slot 0



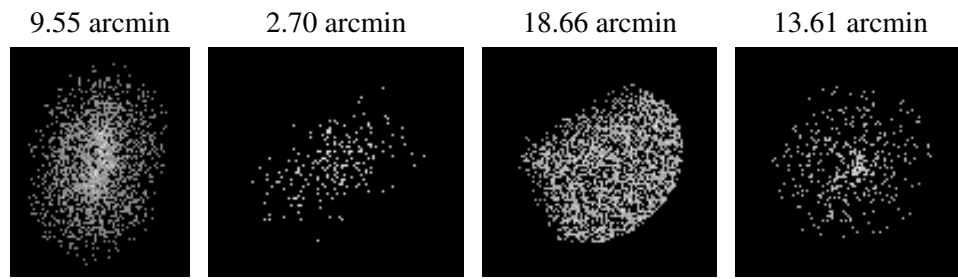
2.5.2 Slot 1



2.5.3 Slot 2



3 Point Sources



A Summary

A.1 Status

V&V Scientist	Beth Sundheim
V&V Date (YYYY-MM-DD)	2006.10.15
V&V Edition	1
V&V Disposition and Status	OK
V&V Charge Time	18.102

A.2 Comments