

V&V Reference Report

L2 ASCDS Version : 7.6.8.1

Observation 2920 - L2 Version 001
Chandra X-Ray Center

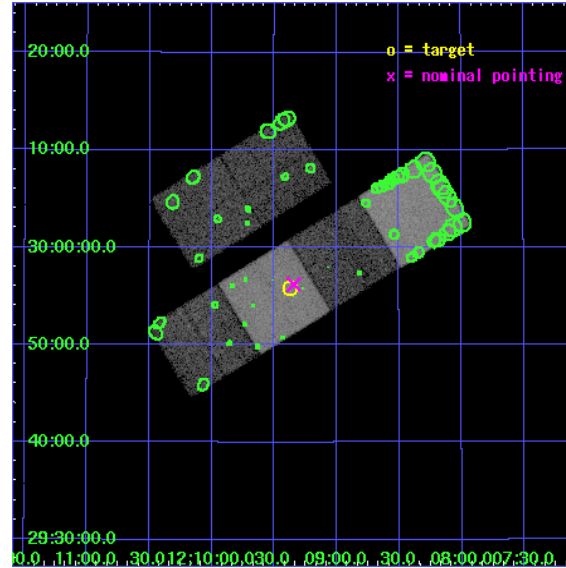
L2 Processing Date : Sep 6 2006

Contents

1	Front	2
2	OBI	3
2.1	OBI	3
2.1.1	Images	3
2.1.2	Bias	3
2.1.3	Parameters	4
2.1.4	Events	4
2.2	Compared Parameters	5
2.3	Aspect	6
2.4	Star Slots	9
2.4.1	Slot 3	9
2.4.2	Slot 4	10
2.4.3	Slot 5	11
2.4.4	Slot 6	12
2.4.5	Slot 7	13
2.5	FID Slots	14
2.5.1	Slot 0	14
2.5.2	Slot 1	15
2.5.3	Slot 2	16
3	Point Sources	17
A	Summary	18
A.1	Status	18
A.2	Comments	18

1 Front

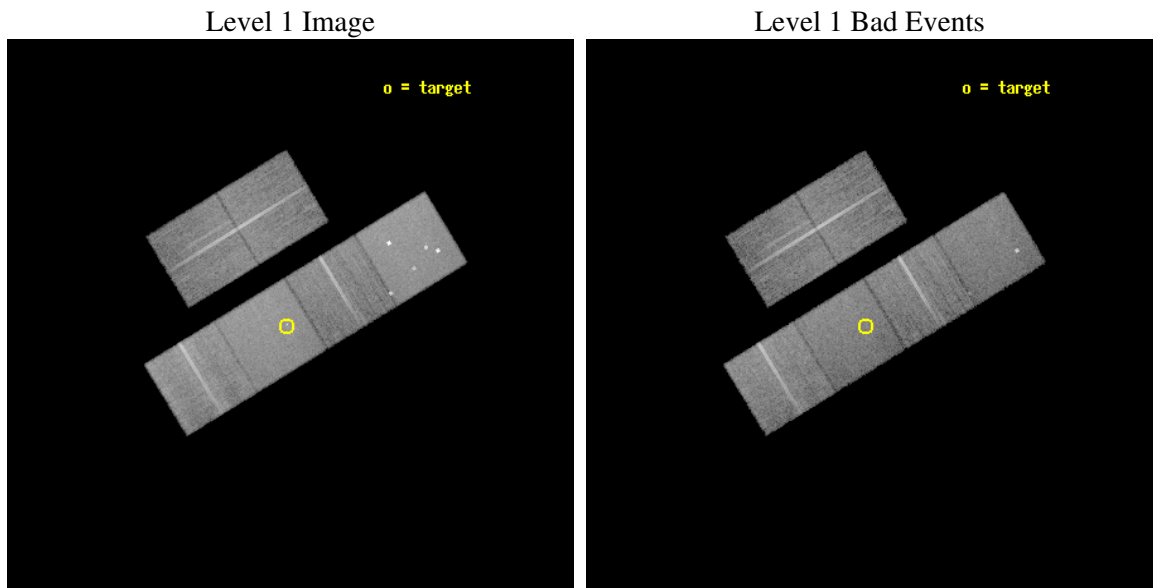
seq_num	600257
obs_id	2920
title	FURTHER PROBING THE NATURE OF SUPER-LUMINOUS X-RAY SOURCES IN NEARBY GALAXIES
observer	Dr Timothy Roberts
object	NGC 4136 X-1
dtcycle	0
cycle	P
ra_targ	182.344167
dec_targ	29.930278
ra_nom	182.33578820438
dec_nom	29.936696660832
roll_nom	148.62790594146
revision	2
ontime	18751.959037215
livetime	18514.510440811
ontime2	18755.200017467
ontime3	18755.200017467
ontime5	18755.200017467
ontime6	18755.200017467
ontime7	18751.959037215
ontime8	18751.95916678
l2events	189531



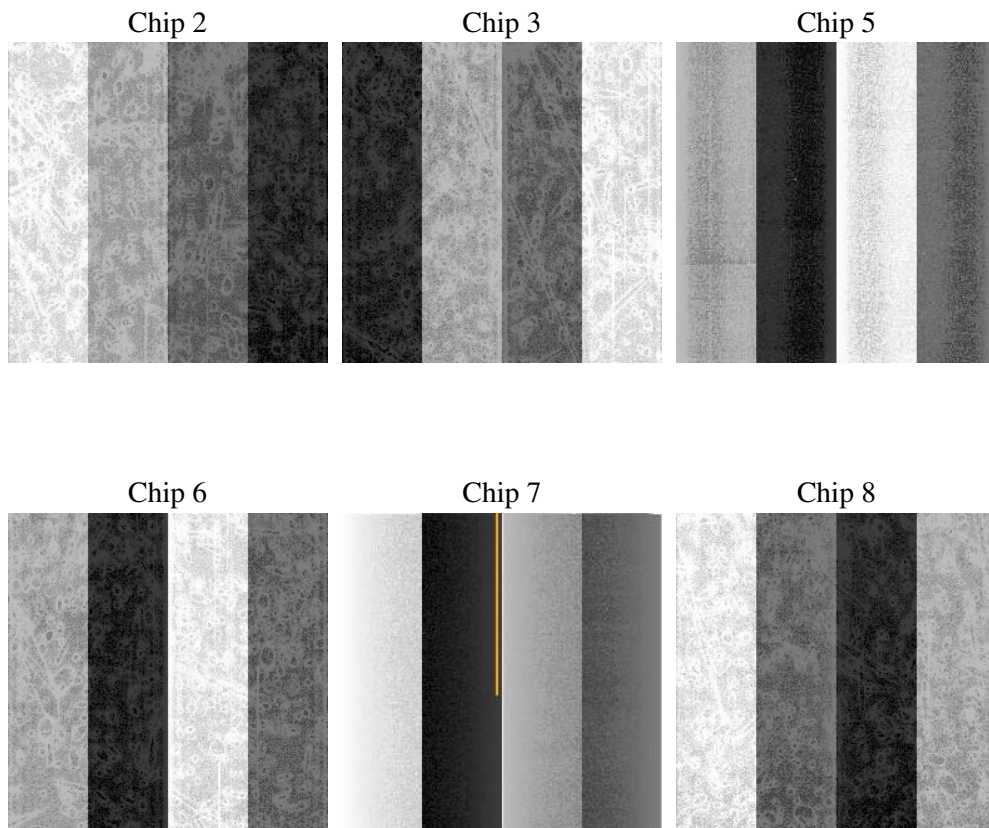
2 OBI

2.1 OBI

2.1.1 Images



2.1.2 Bias



2.1.3 Parameters

obi_num	1
ascdsver	7.6.8.1
caldsver	3.2.3
date	2006-09-06T12:00:06
revision	2

sched_exp_time	19000.000000
ontime	18755.699548438
ontime2	18758.940508768
ontime3	18758.940528691
ontime5	18758.940528691
ontime6	18758.940528691
ontime7	18755.699548438
ontime8	18755.699578345
l1events	904882

2.1.4 Events

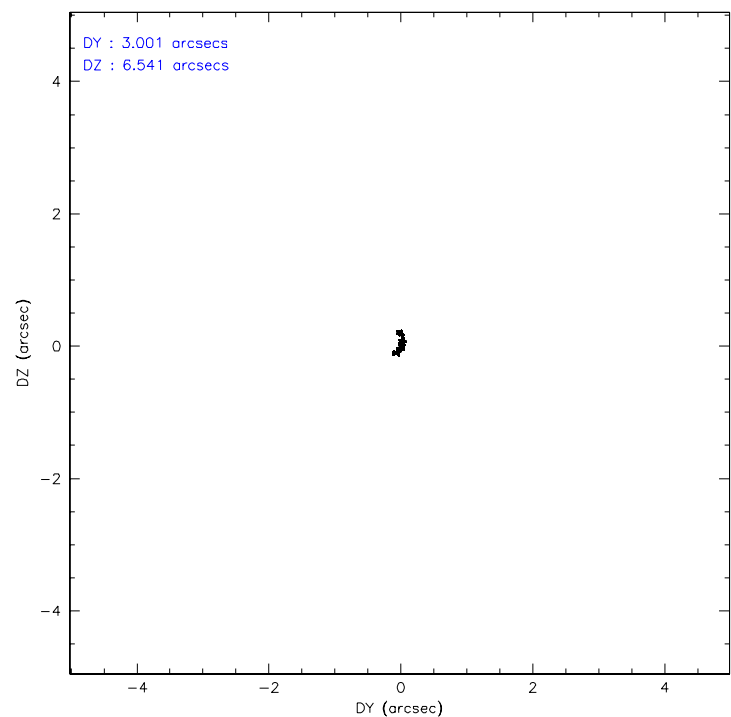
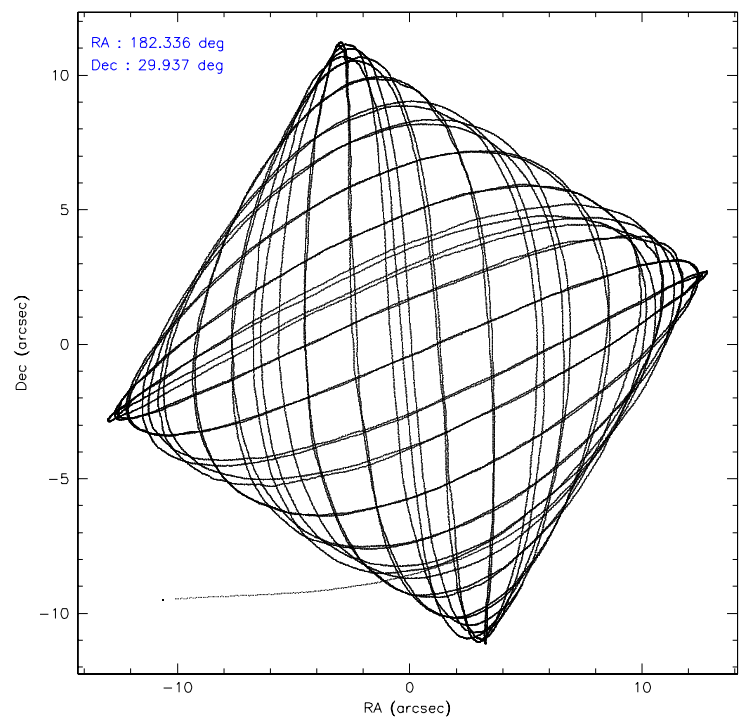
	ccd 2	ccd 3	ccd 5	ccd 6	ccd 7	ccd 8
level 1 events	129715	121997	189928	129061	167774	166407
rejected events	115311	107636	103139	114657	103277	131241
rejected %	88%	88%	54%	88%	61%	78%

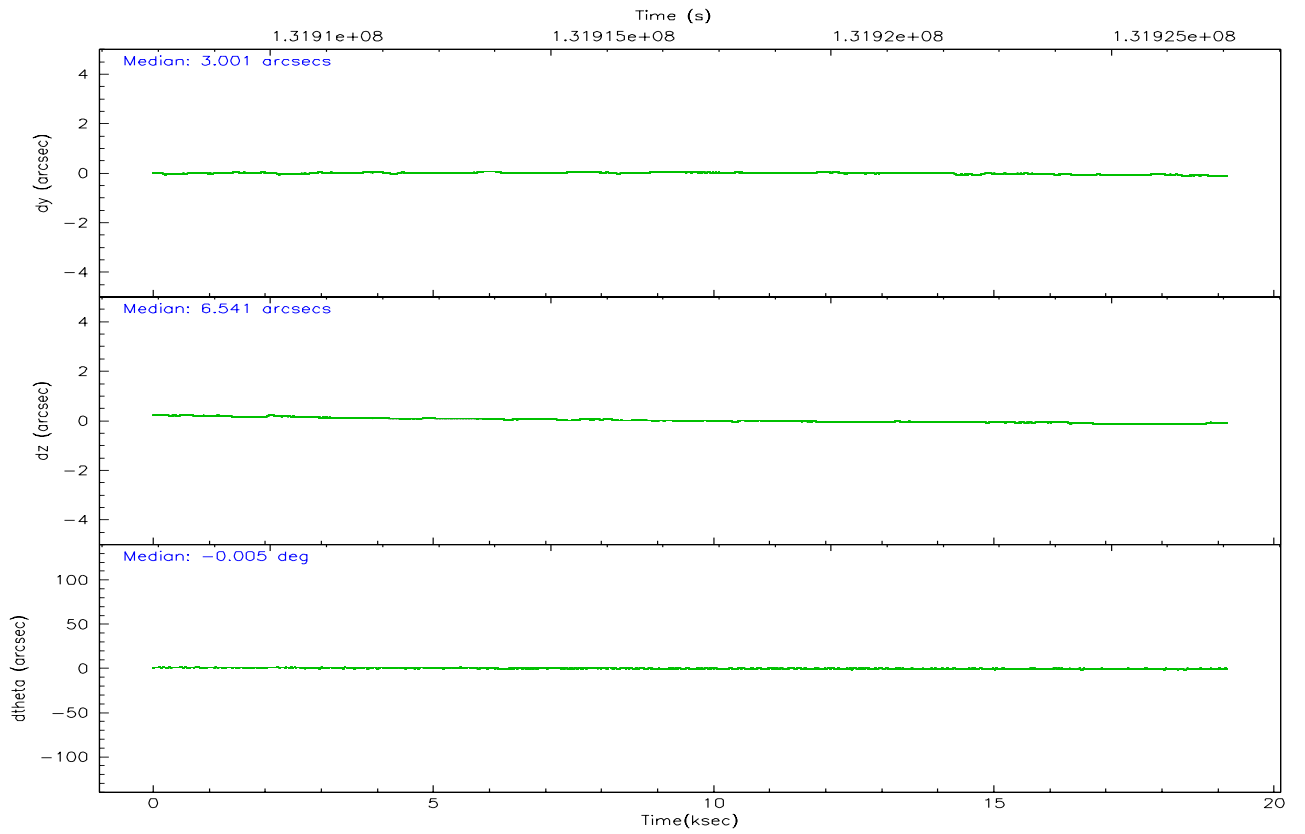
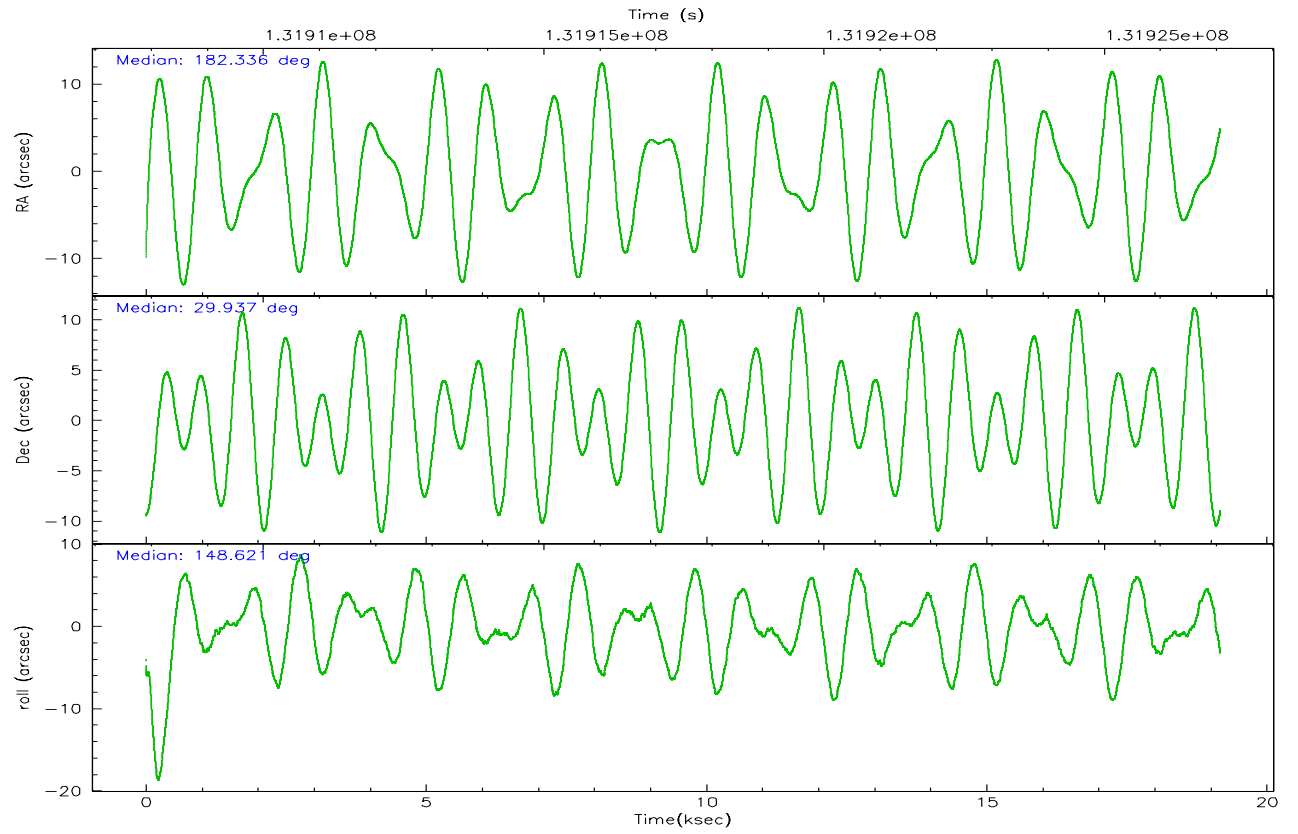
	ccd 2	ccd 3	ccd 5	ccd 6	ccd 7	ccd 8
grade 0 events	5860	6011	11596	5605	4162	10844
	4%	4%	6%	4%	2%	6%
grade 1 events	73	55	235	50	121	121
	0%	0%	0%	0%	0%	0%
grade 2 events	3196	2875	25451	3029	15905	7421
	2%	2%	13%	2%	9%	4%
grade 3 events	1309	1416	1939	1453	3344	4016
	1%	1%	1%	1%	1%	2%
grade 4 events	1335	1453	1840	1395	3270	3693
	1%	1%	0%	1%	1%	2%
grade 5 events	4515	4867	9157	5357	11196	6942
	3%	3%	4%	4%	6%	4%
grade 6 events	2706	2607	45980	2922	37827	9193
	2%	2%	24%	2%	22%	5%
grade 7 events	110721	102713	93730	109250	91949	124177
	85%	84%	49%	84%	54%	74%

2.2 Compared Parameters

Parameter	Planned	Actual	Parameter	Planned	Actual
Instrument	ACIS	ACIS	Obspar format version number	6	6
Detector	ACIS-235678	ACIS-235678	Obspar file type	PREDICTED	ACTUAL
Grating	NONE	NONE	Obspar update status	NONE	UPDATED
Data mode	FAINT	FAINT	On-chip summing requested	N	N
Observation mode	POINTING	POINTING	Subarray requested	NONE	NONE
Pointing RA	182.367231	182.3357882043802	Alternating exposures requested	N	N
Pointing Dec	29.936399	29.93669666083242	Primary exposure time	0.000000	3.2
Pointing Roll	148.455583	148.6279059414645			
SIM focus pos (mm)	-0.684267	-0.6828225247311905			
SIM defocus (mm)	0	0.001444936568705701			
SIM translation stage pos (mm)	-190.132523	-190.1400660498719			
SIM translation stage offset (mm)	0	0.00754346686406393			
Observation start time	131908067.184000	131907126.6157			
Observation start date	2002-03-07T17:06:43	2002-03-07T16:52:06			
Observation end time	131927067.184000	131927445.70403			
Observation end date	2002-03-07T22:23:23	2002-03-07T22:30:45			
Read mode	TIMED	TIMED			

2.3 Aspect



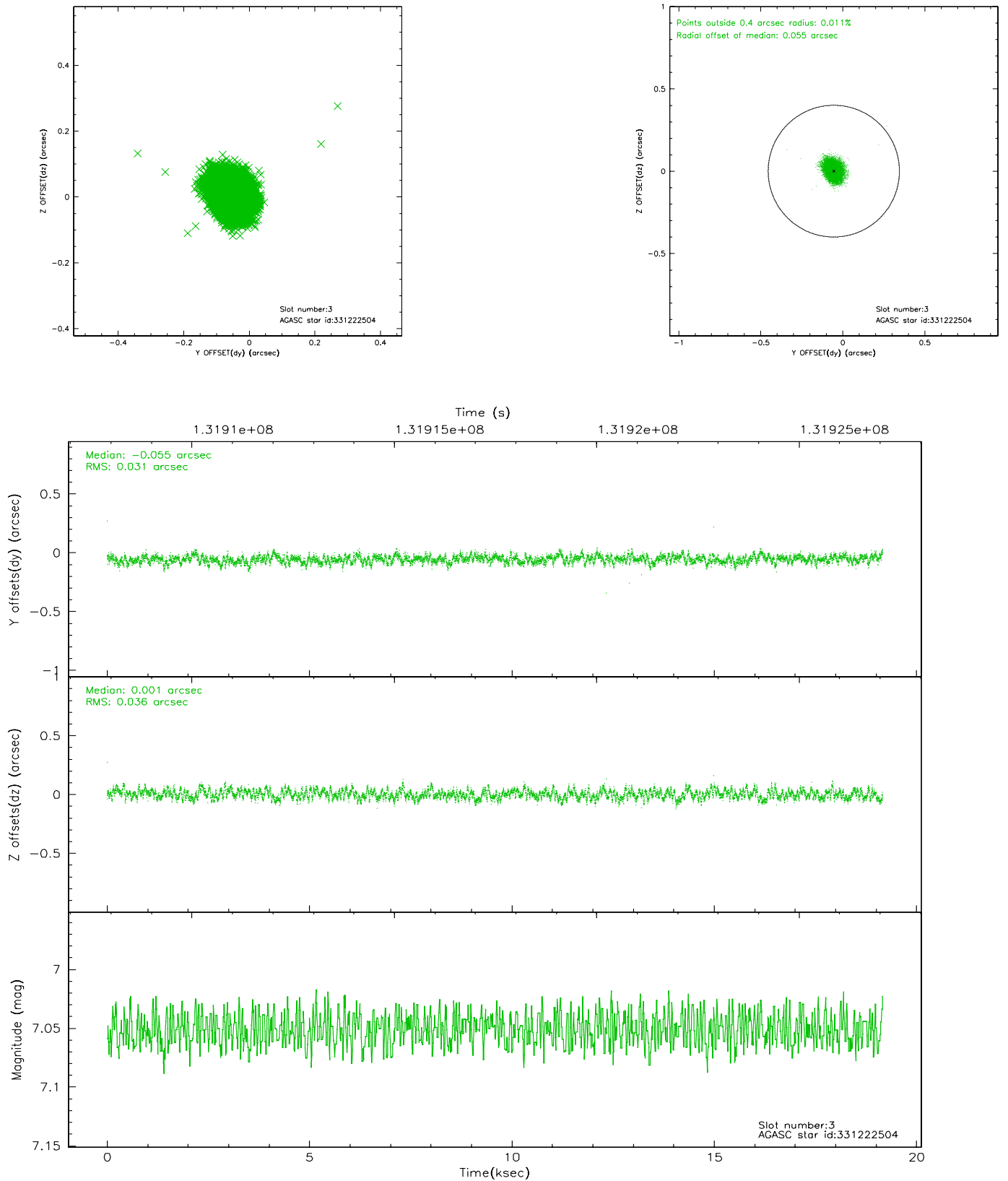


Slot Statistics

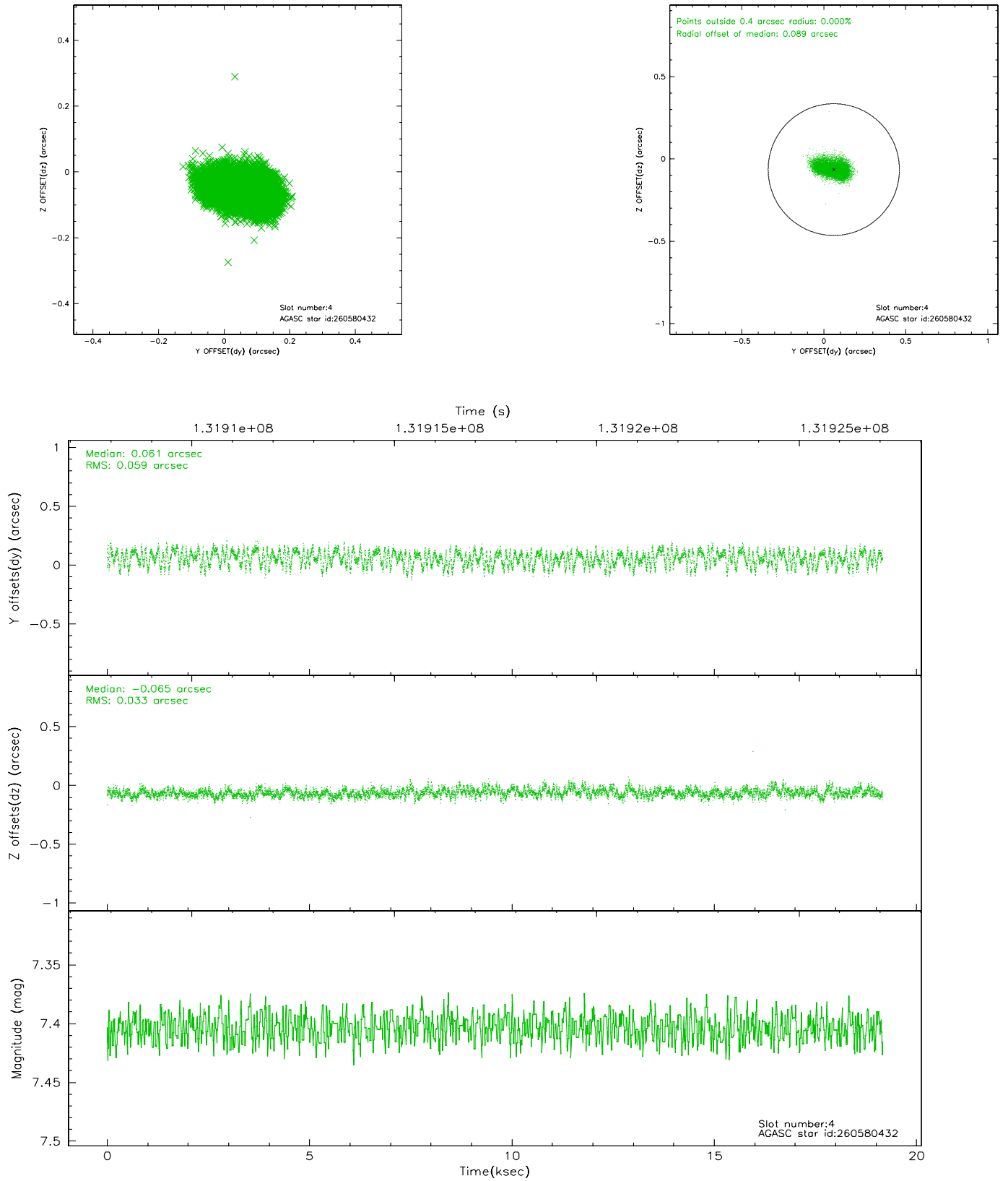
slot	status	id	mag	n_pts	med_dy	med_dz	dr1	dr2	ra	dec	mean_y	mean_z
0	FID	ACIS-S-2	7.12	4672	-0.013	0.035	0.007	0.011	0.000000	0.000000	-755.62	-1727.69
1	FID	ACIS-S-4	7.20	4672	-0.068	-0.003	0.005	0.009	0.000000	0.000000	2157.48	180.58
2	FID	ACIS-S-5	7.24	4674	0.049	-0.023	0.006	0.010	0.000000	0.000000	-1808.17	174.41
3	GUIDE	331222504	7.05	9347	-0.055	0.001	0.050	0.080	182.064211	30.275360	1441.64	-548.43
4	GUIDE	260580432	7.40	9347	0.061	-0.065	0.072	0.117	182.615916	29.068189	-2302.07	2252.84
5	GUIDE	331224640	7.84	9347	-0.076	0.084	0.048	0.078	181.937429	30.420434	2049.54	-789.06
6	GUIDE	260576048	7.88	9345	0.066	-0.040	0.057	0.091	182.340266	29.460601	-824.27	1503.30
7	GUIDE	260571904	9.45	9342	0.006	0.020	0.090	0.143	183.167466	29.996113	-2009.40	-1496.09

2.4 Star Slots

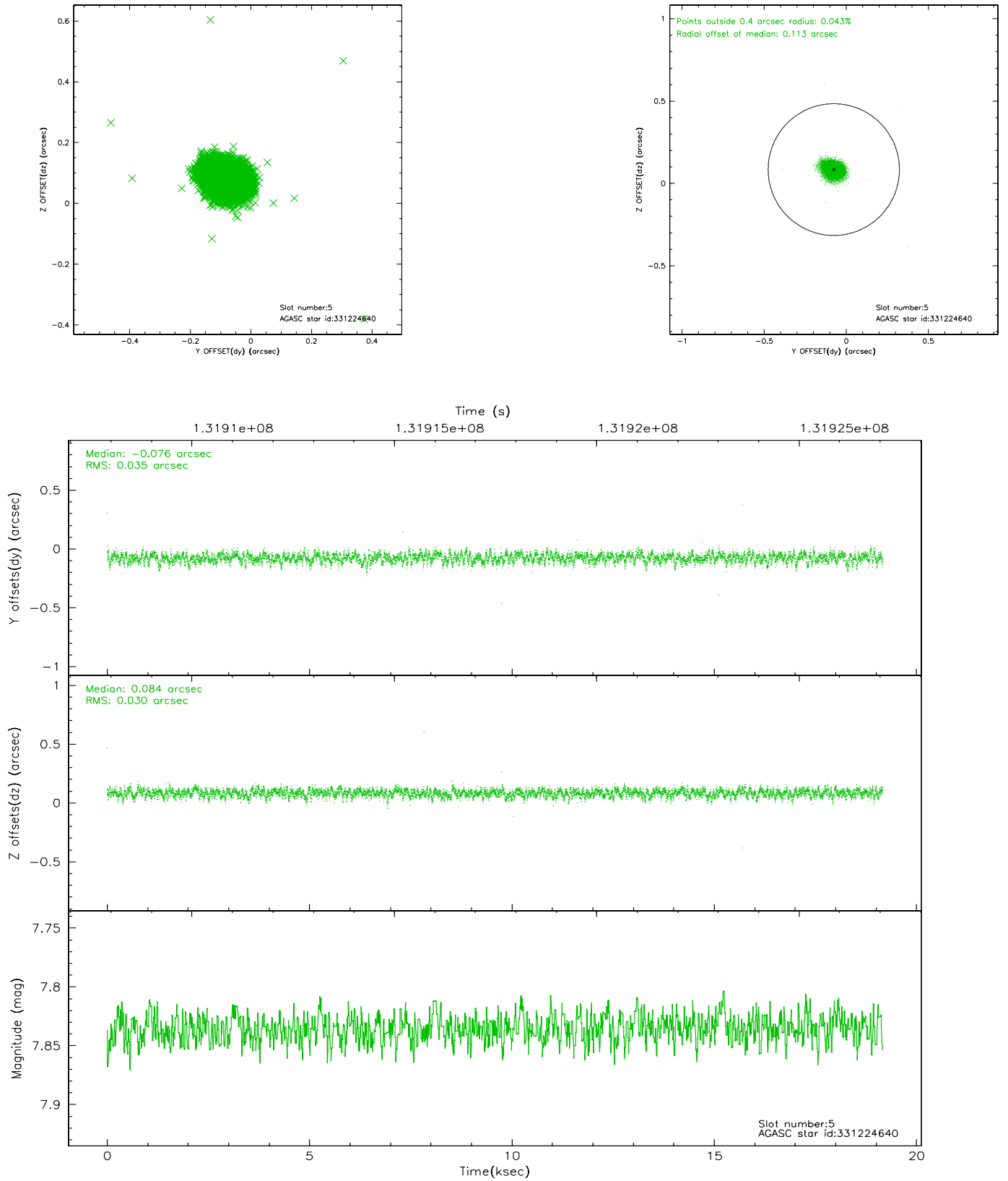
2.4.1 Slot 3



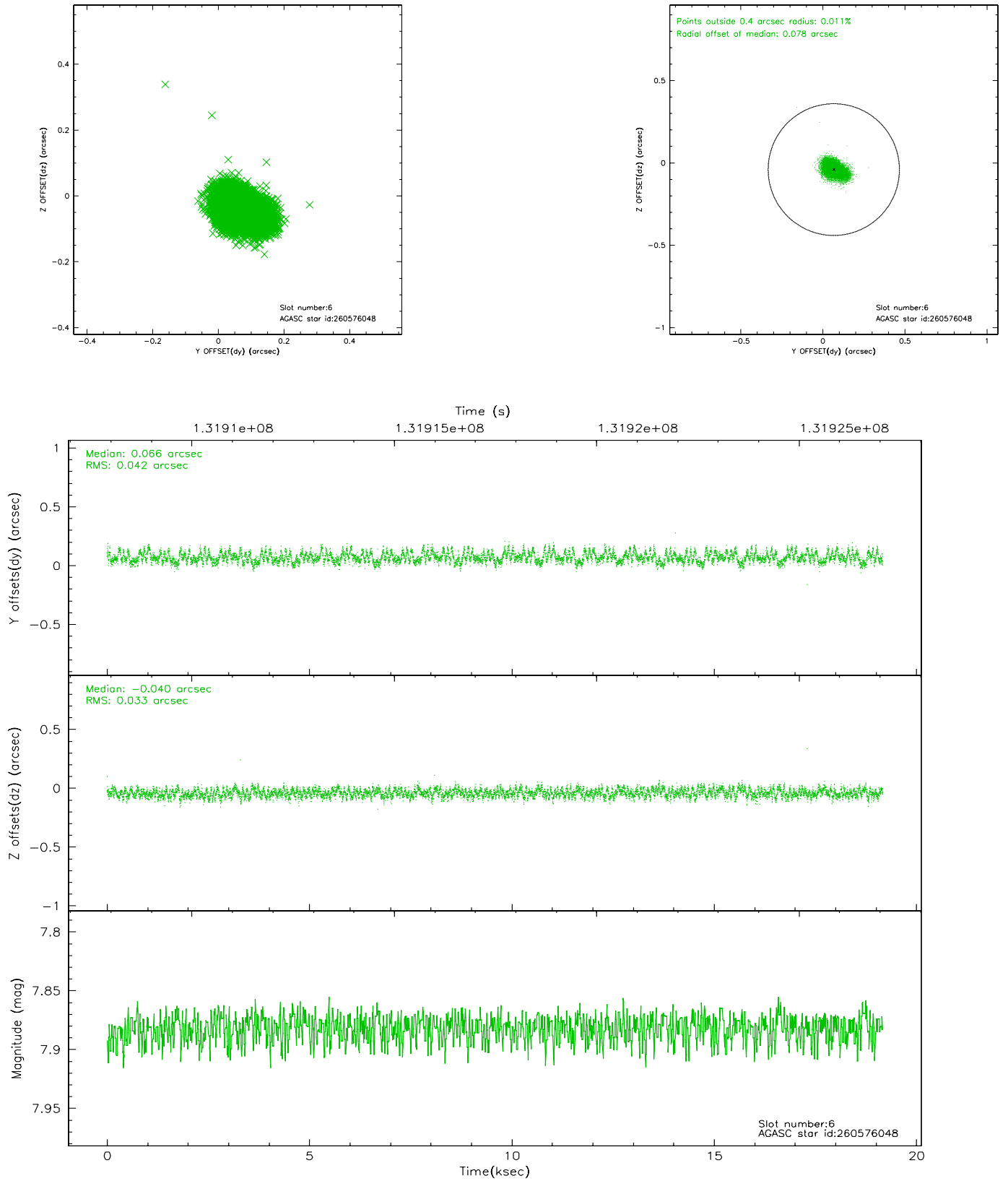
2.4.2 Slot 4



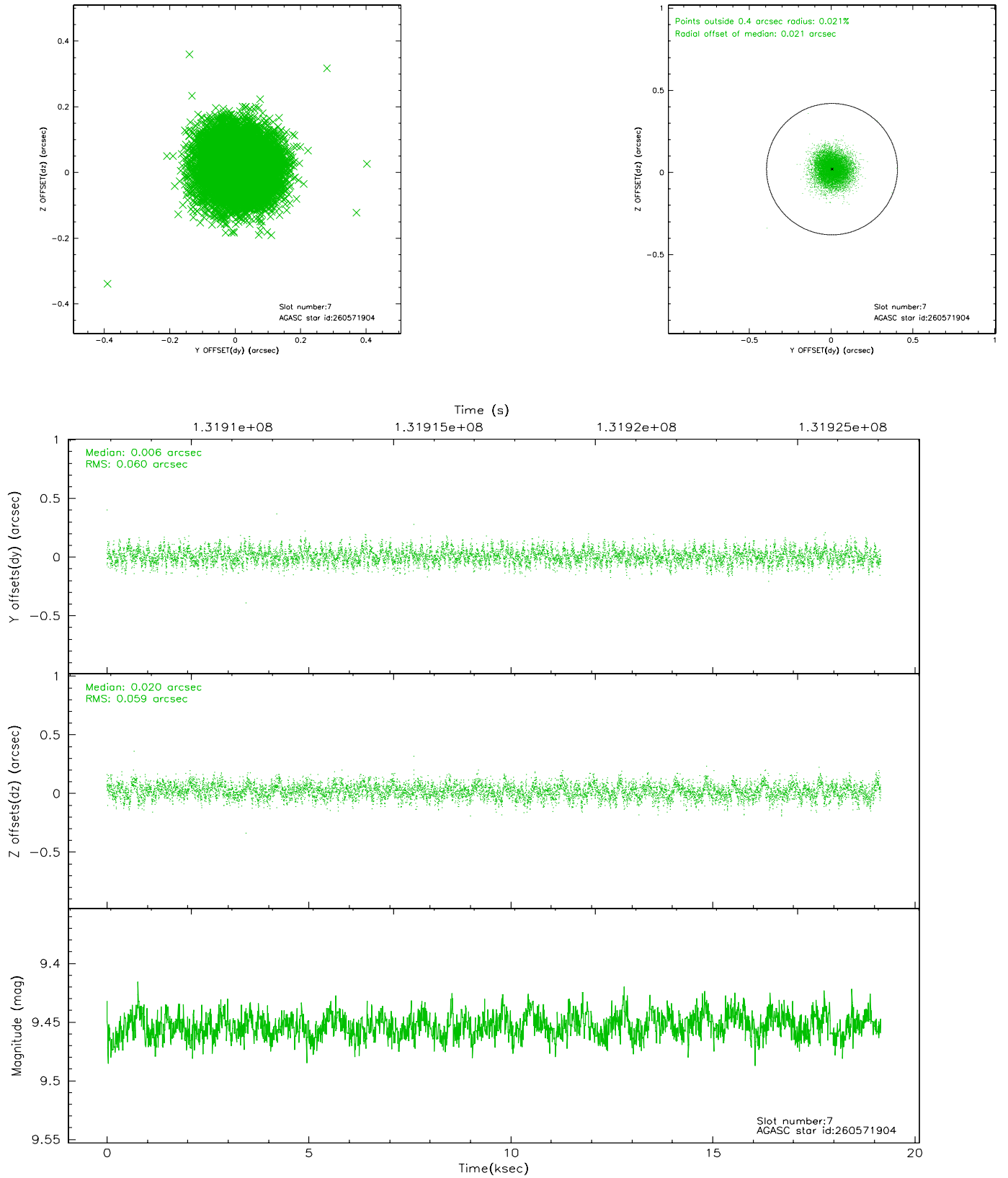
2.4.3 Slot 5



2.4.4 Slot 6

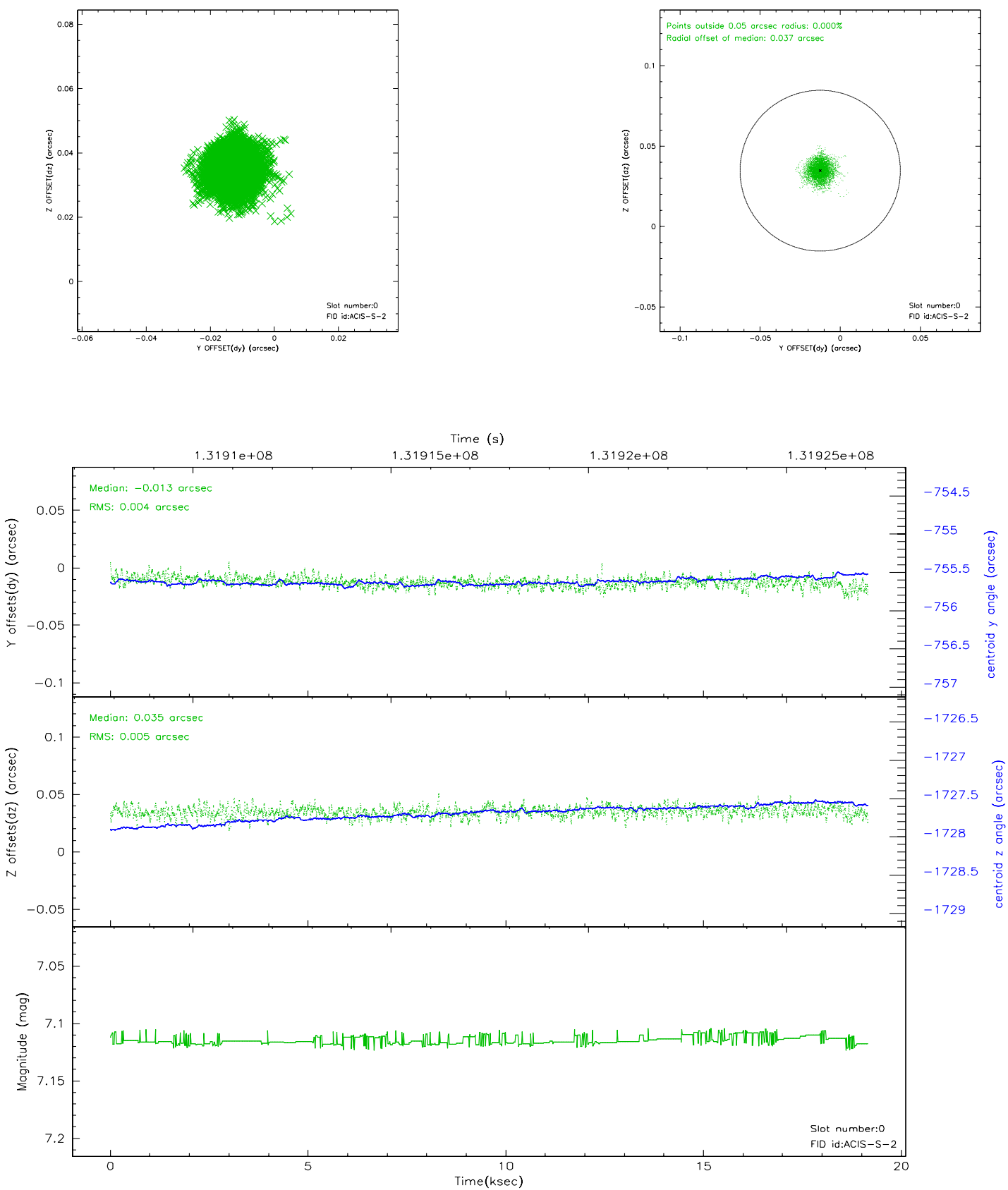


2.4.5 Slot 7

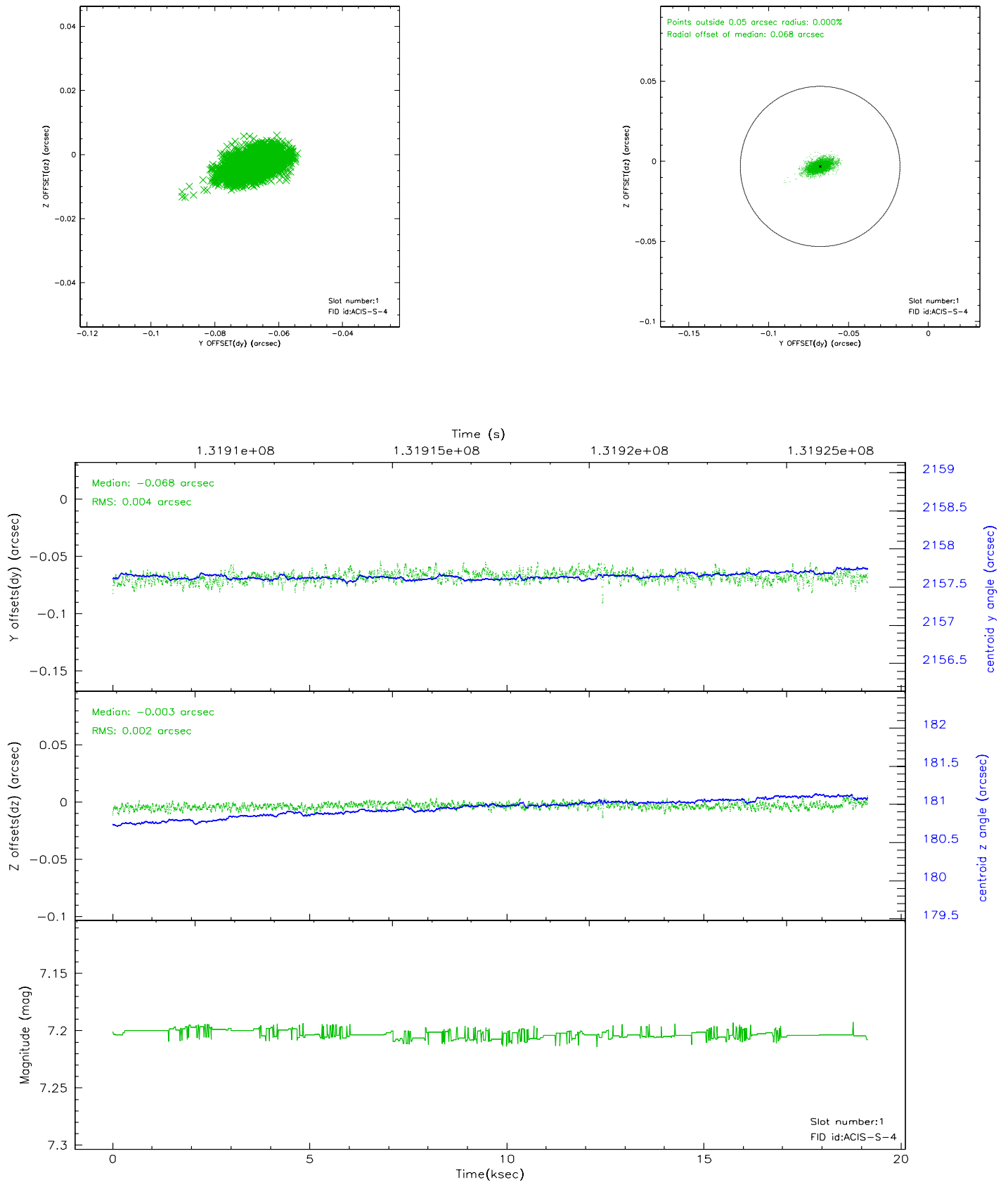


2.5 FID Slots

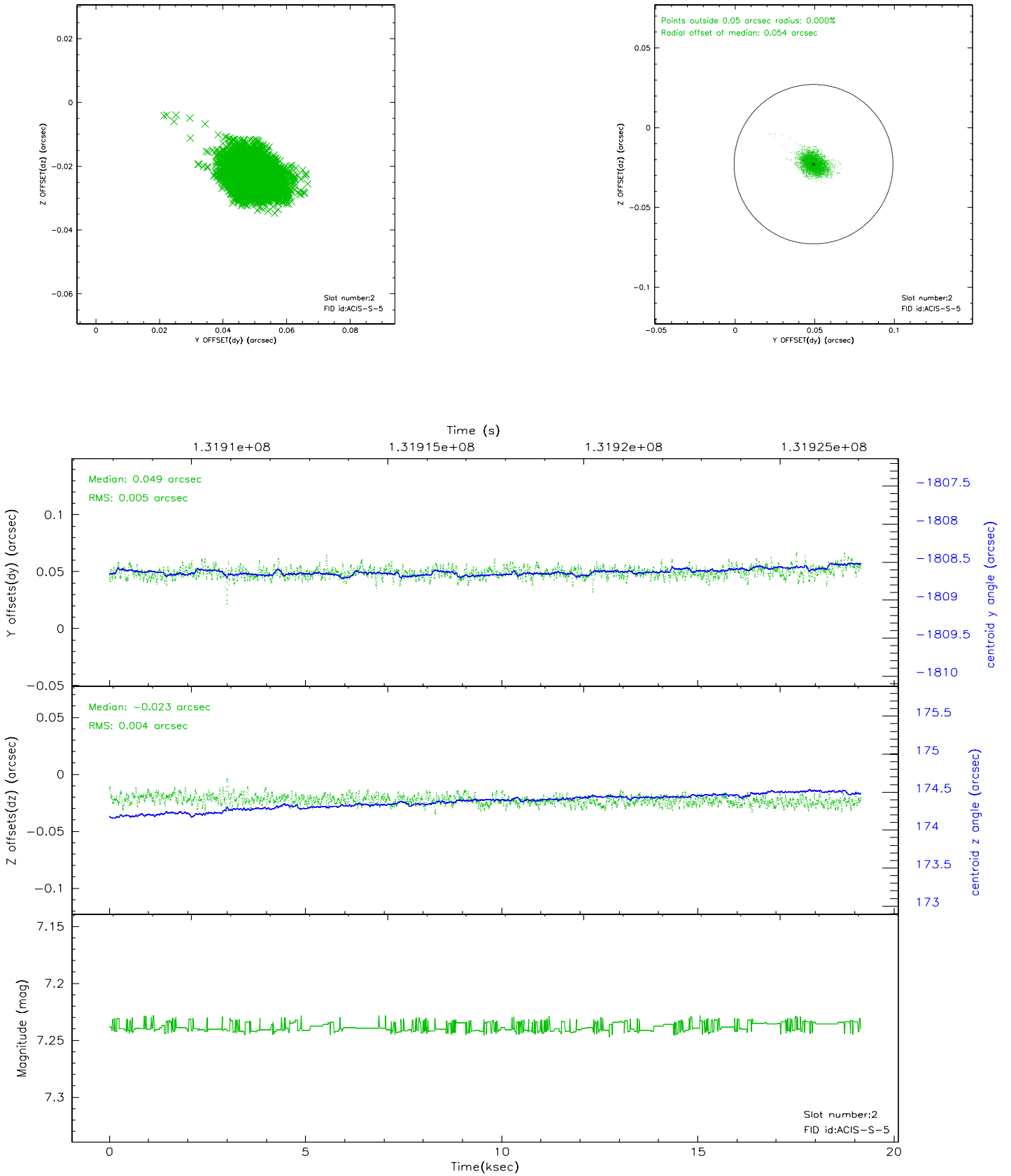
2.5.1 Slot 0



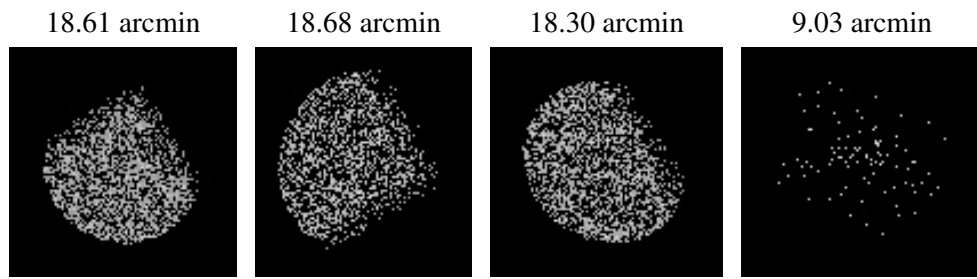
2.5.2 Slot 1



2.5.3 Slot 2



3 Point Sources



A Summary

A.1 Status

V&V Scientist	Jen Lauer
V&V Date (YYYY-MM-DD)	2006.09.06
V&V Edition	1
V&V Disposition and Status	OK
V&V Charge Time	18.752

A.2 Comments