

V&V Reference Report

L2 ASCDS Version : 7.6.9

Observation 2916 - L2 Version 001
Chandra X-Ray Center

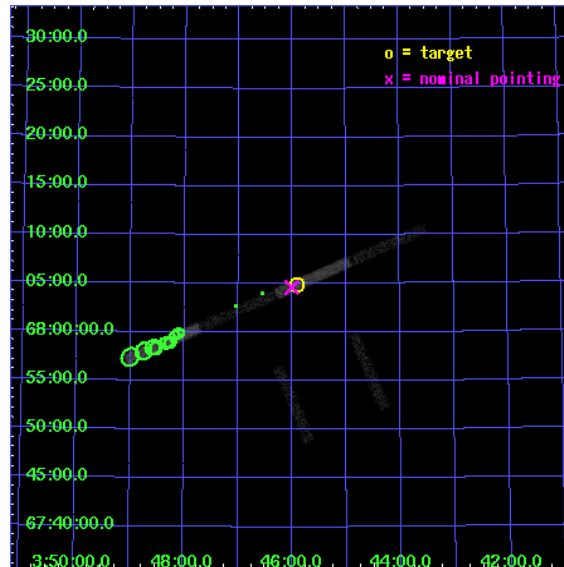
L2 Processing Date : Sep 14 2006

Contents

1	Front	2
2	OBI	3
2.1	OBI	3
2.1.1	Images	3
2.1.2	Bias	3
2.1.3	Parameters	4
2.1.4	Events	4
2.2	Compared Parameters	5
2.3	Aspect	6
2.4	Star Slots	9
2.4.1	Slot 3	9
2.4.2	Slot 4	10
2.4.3	Slot 5	11
2.4.4	Slot 6	12
2.4.5	Slot 7	13
2.5	FID Slots	14
2.5.1	Slot 0	14
2.5.2	Slot 1	15
2.5.3	Slot 2	16
3	Point Sources	17
A	Summary	18
A.1	Status	18
A.2	Comments	18

1 Front

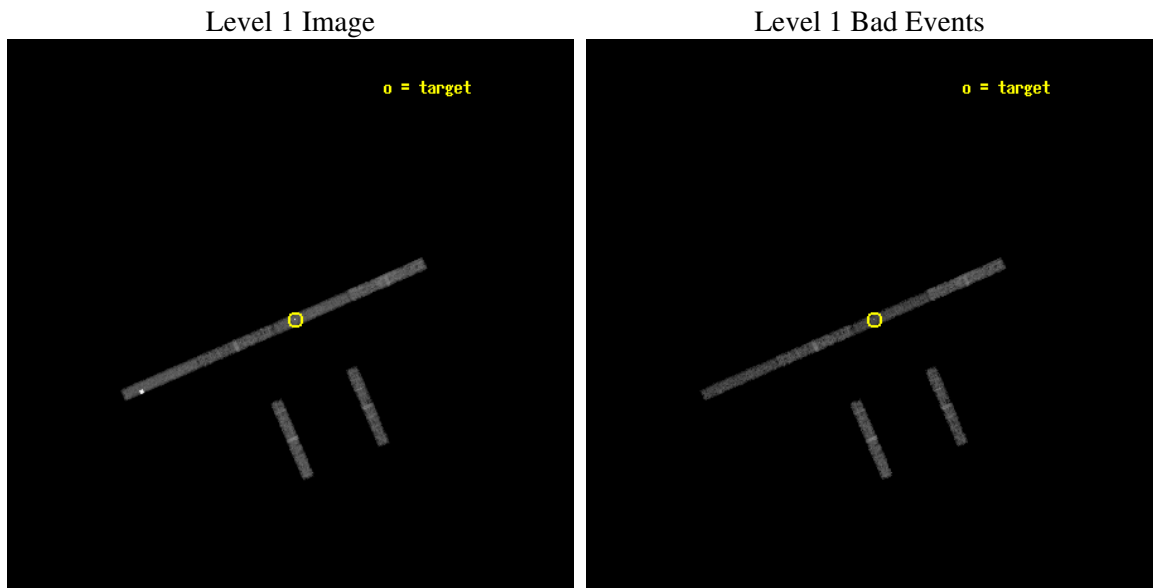
seq_num	600253
obs_id	2916
title	FURTHER PROBING THE NATURE OF SUPER-LUMINOUS X-RAY SOURCES IN NEARBY GALAXIES
observer	Dr Timothy Roberts
object	IC 342 X-1
dtcycle	0
cycle	P
ra_targ	56.48
dec_targ	68.082222
ra_nom	56.501620525611
dec_nom	68.076869171028
roll_nom	336.59830796827
revision	2
ontime	9883.9998316765
livetime	9336.6078513623
ontime2	9883.9998316765
ontime3	9883.9998316765
ontime5	9883.9998316765
ontime6	9883.9998316765
ontime7	9883.9998316765
ontime8	9883.9998316765
l2events	15911



2 OBI

2.1 OBI

2.1.1 Images



2.1.2 Bias

Chip 2

Chip 3

Chip 5



Chip 6

Chip 7

Chip 8



2.1.3 Parameters

obi_num	1
ascdsver	7.6.9
caldsver	3.2.3
date	2006-09-14T19:15:31
revision	2

sched_exp_time	9500.000000
ontime	10013.547038168
ontime2	10013.547038168
ontime3	10013.547038168
ontime5	10013.547038168
ontime6	10013.547038168
ontime7	10013.547038168
ontime8	10014.288048267
l1events	91264

2.1.4 Events

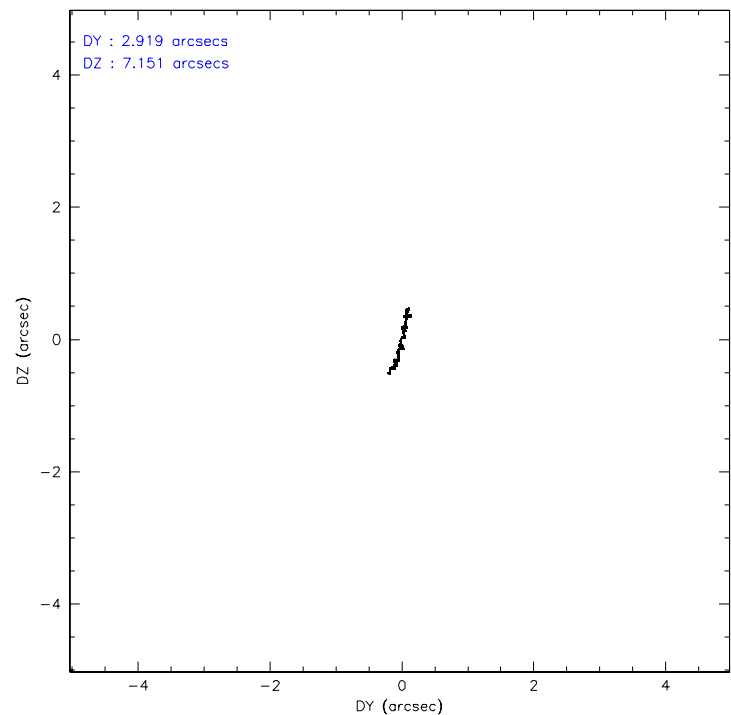
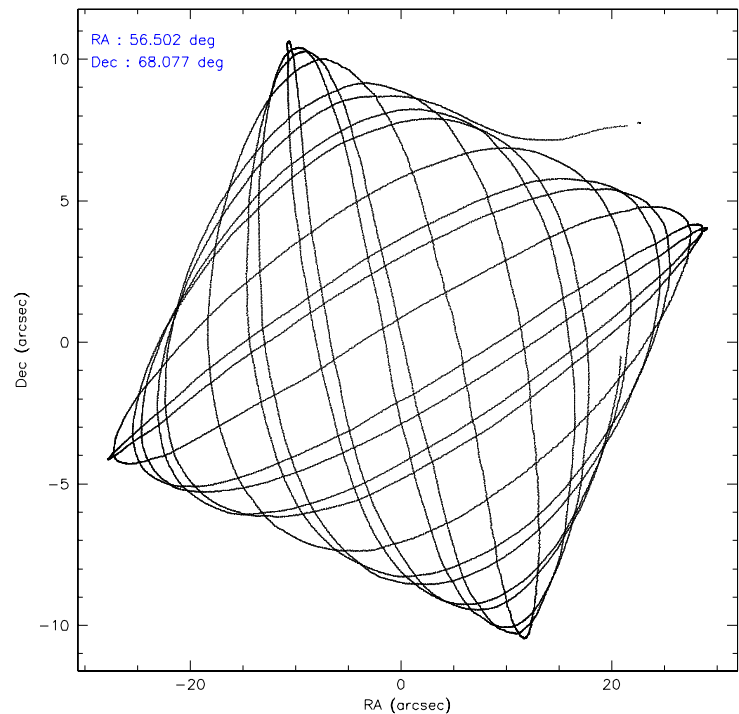
	ccd 2	ccd 3	ccd 5	ccd 6	ccd 7	ccd 8
level 1 events	12815	10952	25524	11338	14275	16360
rejected events	11558	9750	7258	10079	7331	13531
rejected %	90%	89%	28%	88%	51%	82%

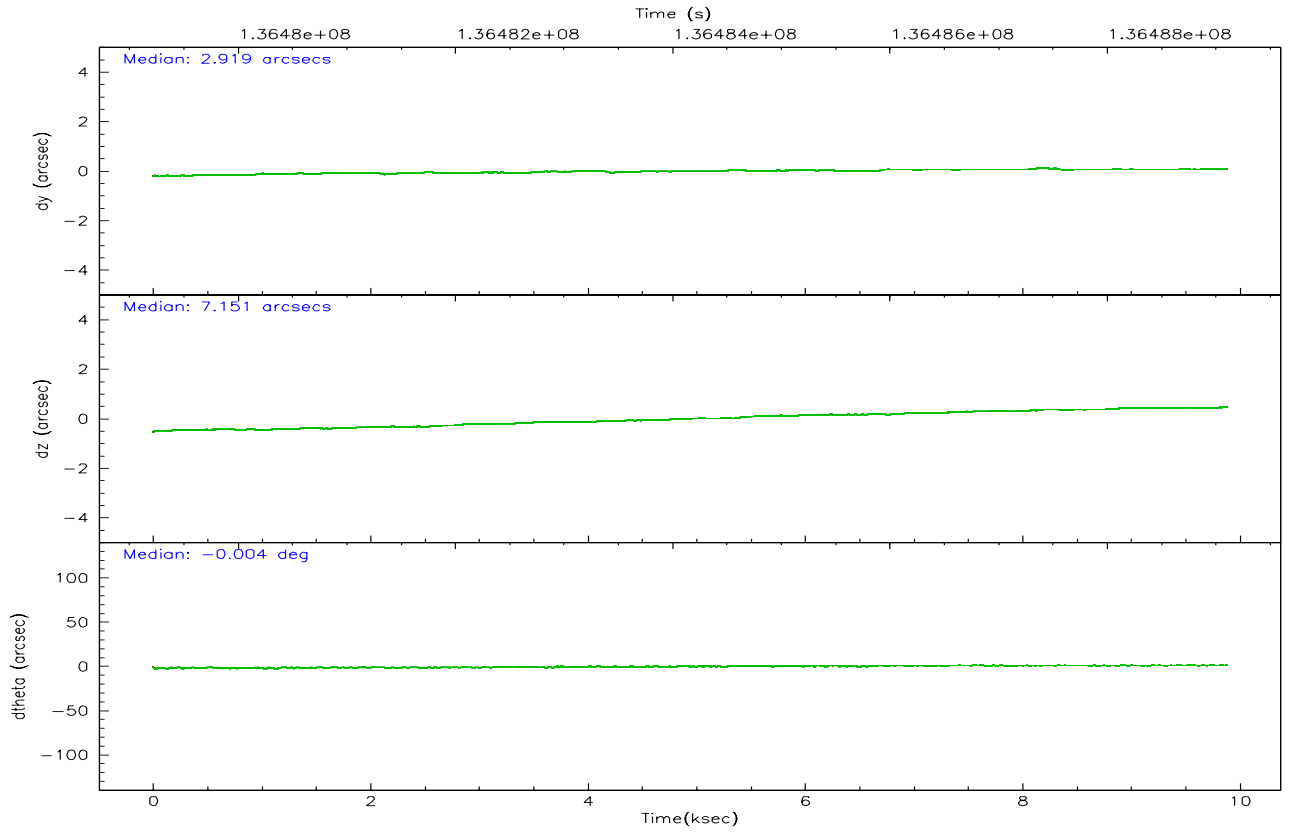
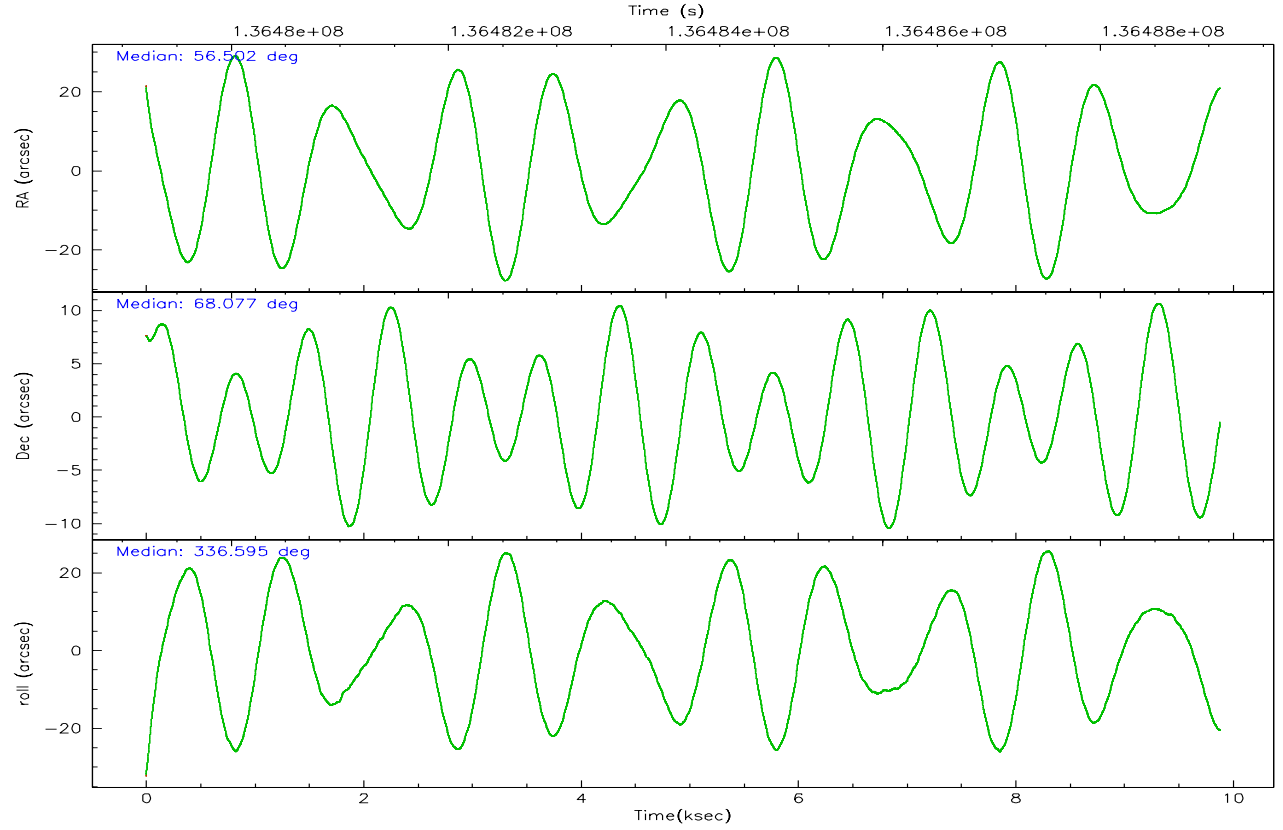
	ccd 2	ccd 3	ccd 5	ccd 6	ccd 7	ccd 8
grade 0 events	431	460	11279	473	843	709
	3%	4%	44%	4%	5%	4%
grade 1 events	3	3	65	7	14	6
	0%	0%	0%	0%	0%	0%
grade 2 events	236	198	3488	210	1722	564
	1%	1%	13%	1%	12%	3%
grade 3 events	203	188	221	197	668	372
	1%	1%	0%	1%	4%	2%
grade 4 events	201	179	439	181	651	330
	1%	1%	1%	1%	4%	2%
grade 5 events	368	328	655	338	899	491
	2%	2%	2%	2%	6%	3%
grade 6 events	192	194	3078	212	3139	933
	1%	1%	12%	1%	21%	5%
grade 7 events	11181	9402	6299	9720	6339	12955
	87%	85%	24%	85%	44%	79%

2.2 Compared Parameters

Parameter	Planned	Actual	Parameter	Planned	Actual
Instrument	ACIS	ACIS	Obspar format version number	6	6
Detector	ACIS-235678	ACIS-235678	Obspar file type	PREDICTED	ACTUAL
Grating	NONE	NONE	Obspar update status	NONE	UPDATED
Data mode	FAINT	FAINT	Number of optional ACIS chips dropped	0	0
Observation mode	POINTING	POINTING	On-chip summing requested	N	N
Pointing RA	56.429291	56.50162052561118	Subarray requested	1/8	1/8
Pointing Dec	68.073387	68.07686917102791	Subarray start row	0	449
Pointing Roll	336.508792	336.5983079682661	Subarray row count	1024	128
SIM focus pos (mm)	-0.684267	-0.6828225247311905	Alternating exposures requested	N	N
SIM defocus (mm)	0	0.001444936568705701	Primary exposure time	0.000000	0.7
SIM translation stage pos (mm)	-190.132523	-190.1425803651734			
SIM translation stage offset (mm)	0	0.01005778216563158			
Observation start time	136479597.184000	136478543.77627			
Observation start date	2002-04-29T14:58:53	2002-04-29T14:42:23			
Observation end time	136489097.184000	136489644.52672			
Observation end date	2002-04-29T17:37:13	2002-04-29T17:47:24			
Read mode	TIMED	TIMED			

2.3 Aspect



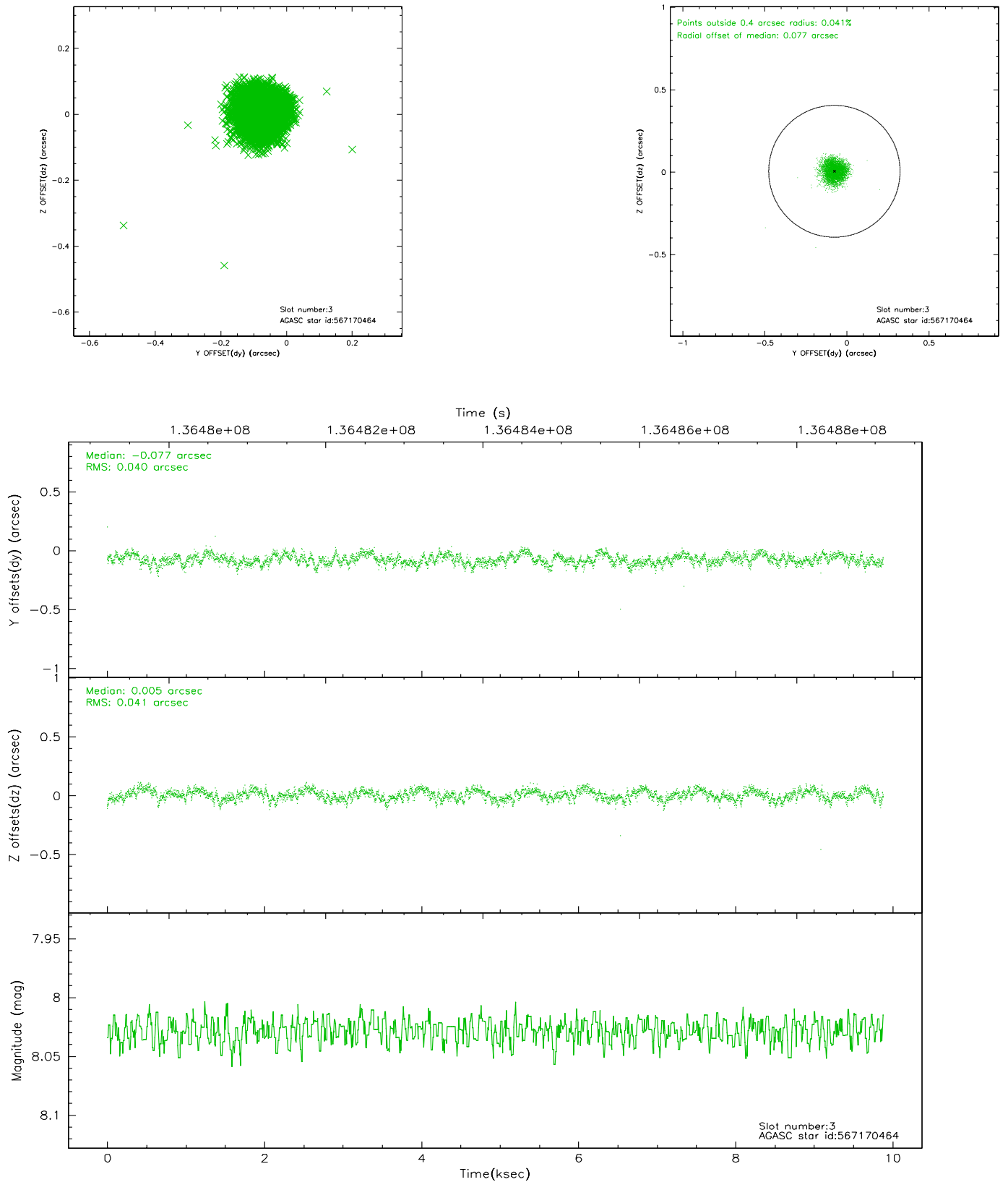


Slot Statistics

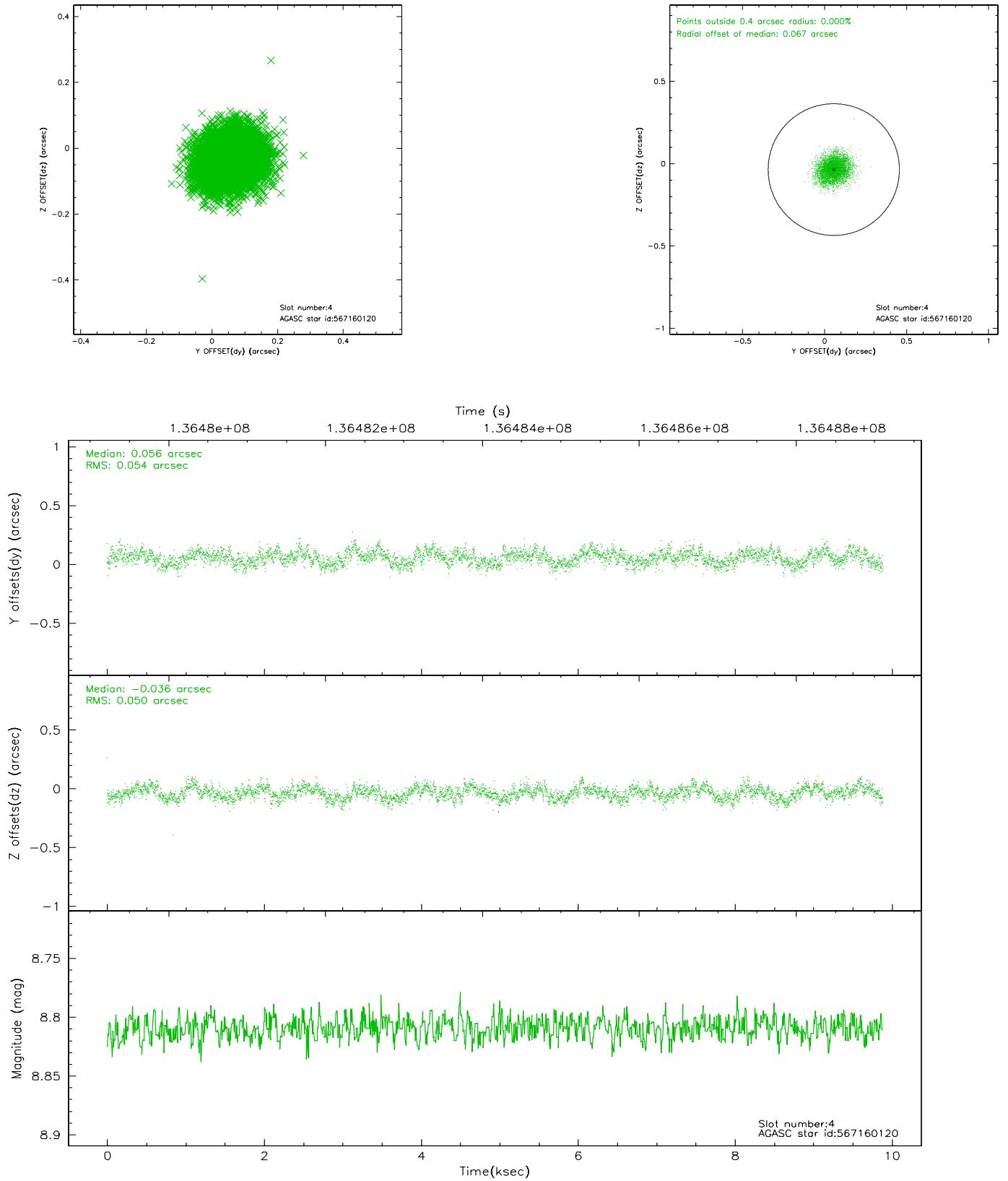
slot	status	id	mag	n_pts	med_dy	med_dz	dr1	dr2	ra	dec	mean_y	mean_z
0	FID	ACIS-S-2	7.11	2410	0.002	0.029	0.009	0.014	0.000000	0.000000	-755.54	-1728.24
1	FID	ACIS-S-4	7.20	2412	-0.081	-0.009	0.006	0.010	0.000000	0.000000	2157.41	179.66
2	FID	ACIS-S-5	7.24	2412	0.047	-0.012	0.009	0.015	0.000000	0.000000	-1807.65	173.93
3	GUIDE	567170464	8.03	4823	-0.077	0.005	0.061	0.093	54.496546	67.994557	-2294.68	-1261.88
4	GUIDE	567160120	8.81	4822	0.056	-0.036	0.079	0.124	58.169025	67.893534	2404.99	375.99
5	GUIDE	567164688	9.00	4820	0.018	-0.003	0.074	0.120	55.209386	68.614739	-2252.16	1163.78
6	GUIDE	567158464	9.58	4821	-0.046	-0.071	0.100	0.158	56.829076	68.700482	-422.61	2280.72
7	GUIDE	567159240	9.53	4819	0.056	0.114	0.143	0.216	58.435274	68.440968	1887.67	2311.67

2.4 Star Slots

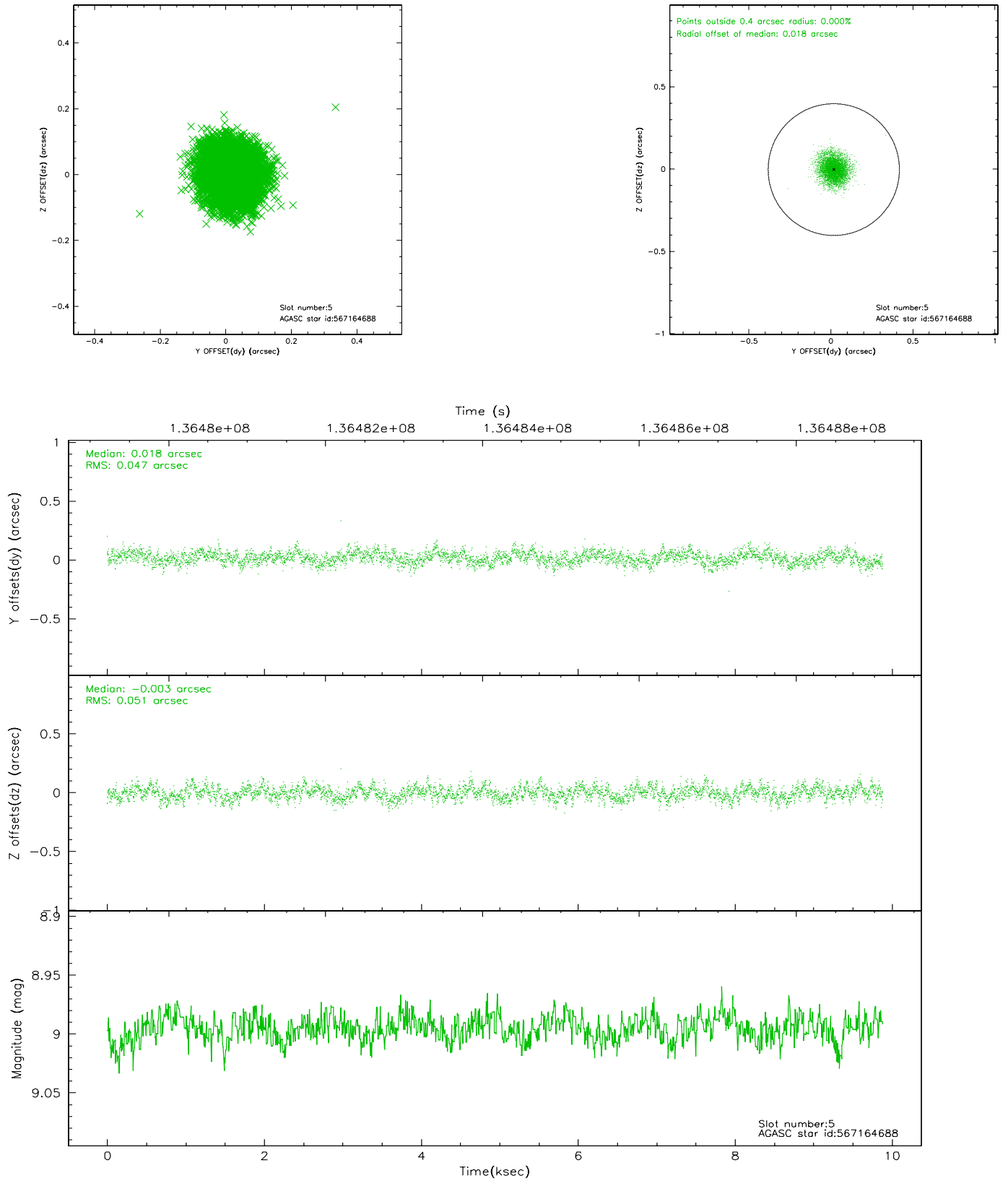
2.4.1 Slot 3



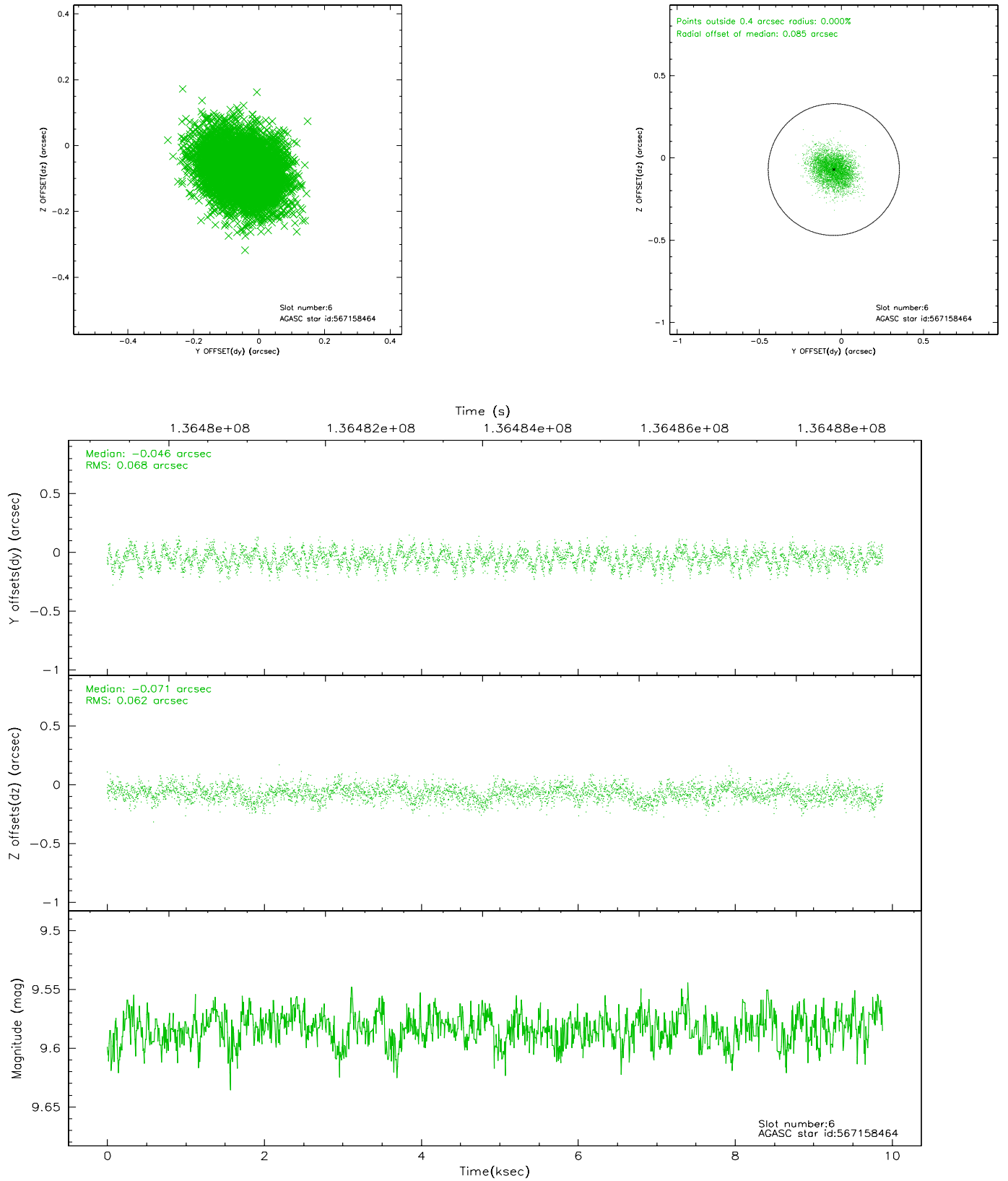
2.4.2 Slot 4



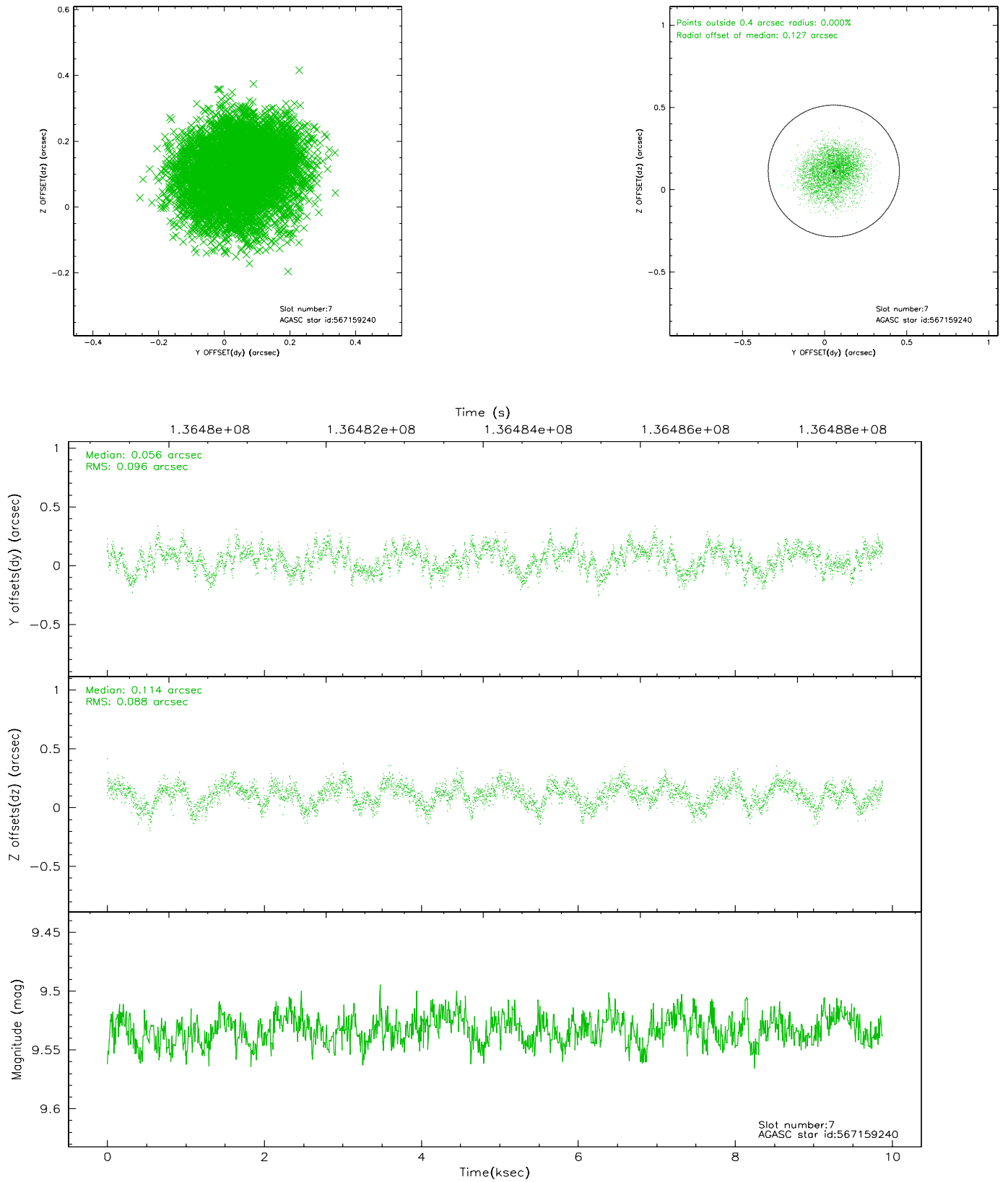
2.4.3 Slot 5



2.4.4 Slot 6

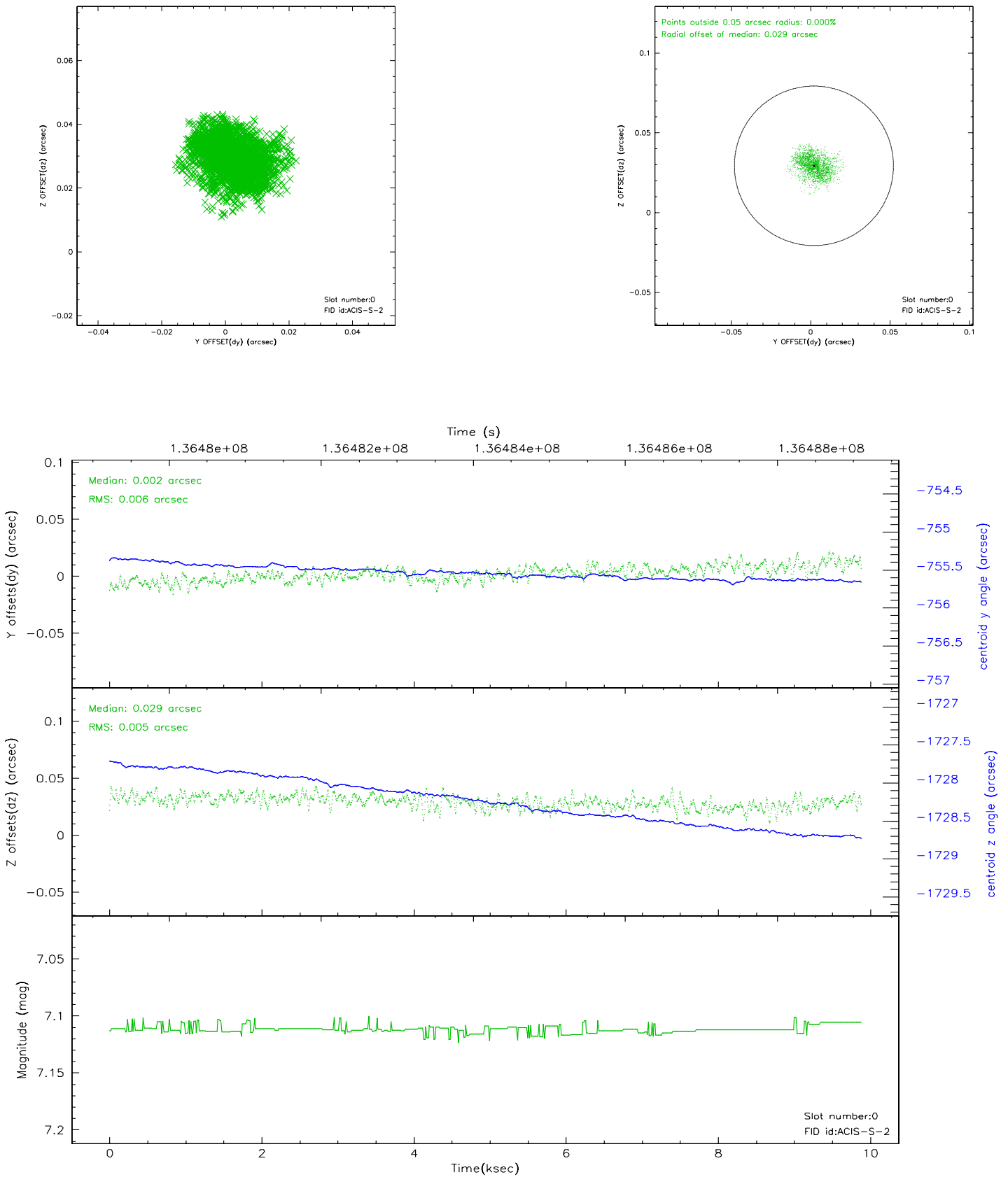


2.4.5 Slot 7

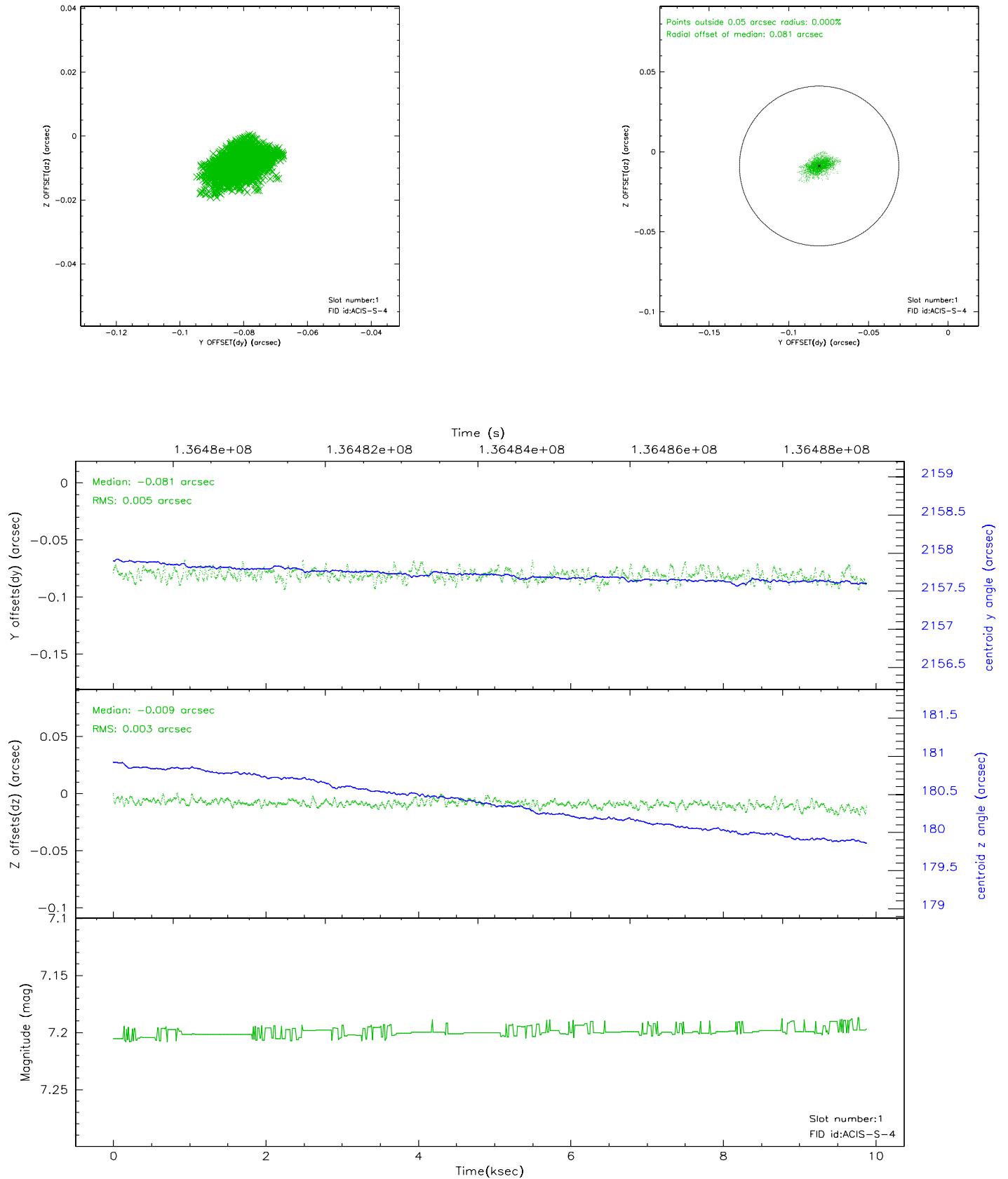


2.5 FID Slots

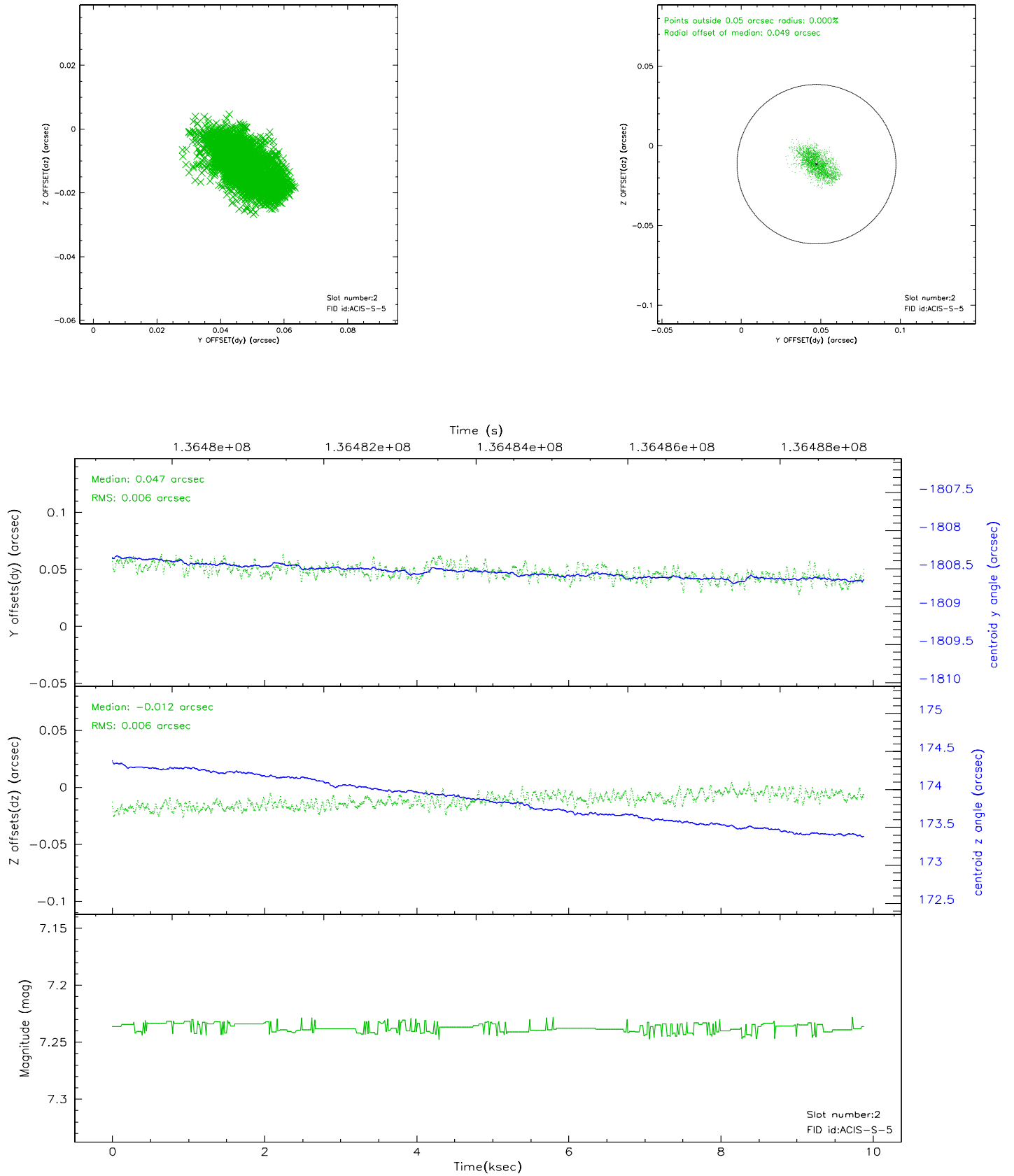
2.5.1 Slot 0



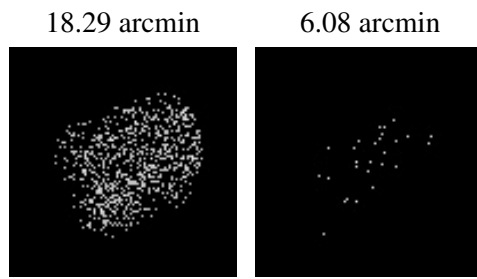
2.5.2 Slot 1



2.5.3 Slot 2



3 Point Sources



A Summary

A.1 Status

V&V Scientist	Jen Lauer
V&V Date (YYYY-MM-DD)	2006.09.18
V&V Edition	1
V&V Disposition and Status	OK
V&V Charge Time	9.884

A.2 Comments