

V&V Reference Report

L2 ASCDS Version : 8.4.5

Observation 2883 - L2 Version 3
Chandra X-Ray Center

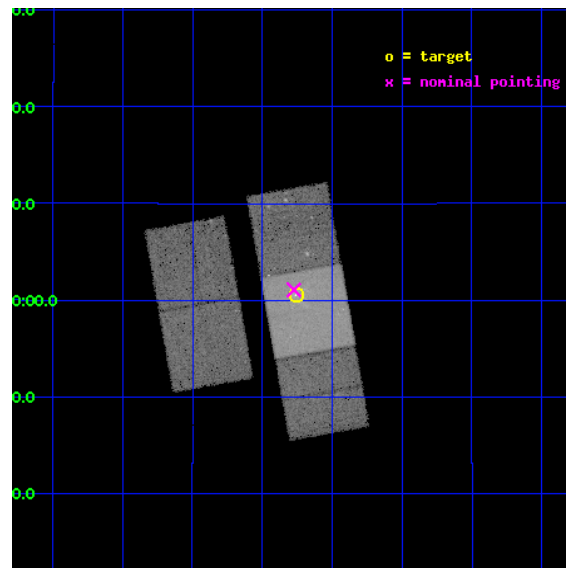
L2 Processing Date : Oct 1 2012

Contents

1	Front	2
2	OBI	3
2.1	OBI	3
2.1.1	Images	3
2.1.2	Bias	3
2.1.3	Parameters	4
2.1.4	Events	4
2.2	Compared Parameters	5
2.3	Aspect	6
2.4	Star Slots	9
2.4.1	Slot 3	9
2.4.2	Slot 4	10
2.4.3	Slot 5	11
2.4.4	Slot 6	12
2.4.5	Slot 7	13
2.5	FID Slots	14
2.5.1	Slot 0	14
2.5.2	Slot 1	15
2.5.3	Slot 2	16
A	Summary	17
A.1	Status	17
A.2	Comments	17

1 Front

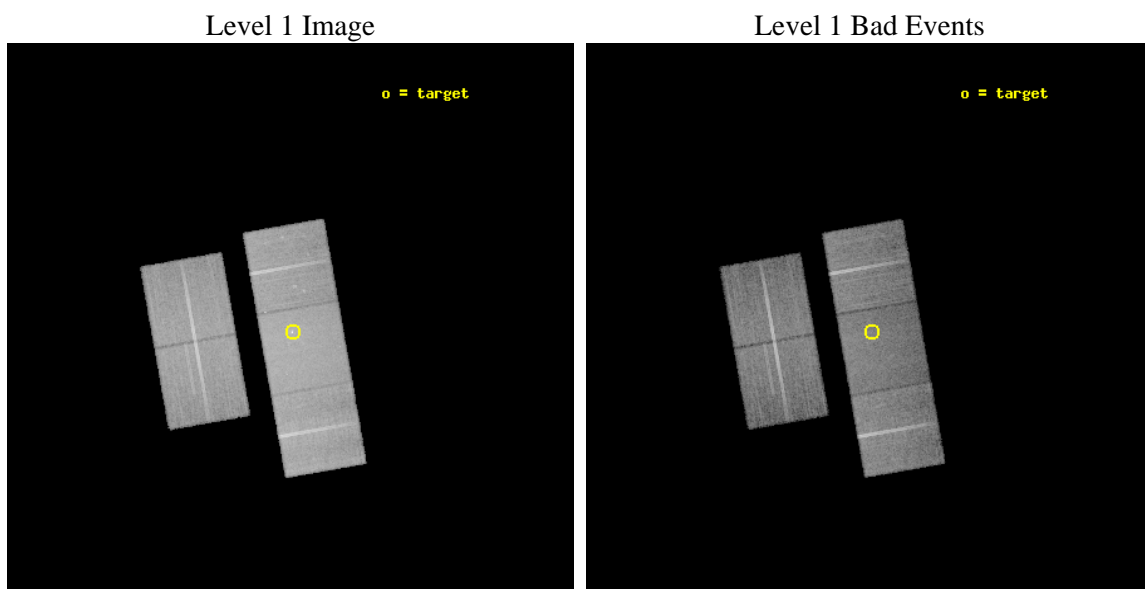
seq_num	600220	Sequence number
obs_id	2883	Observation id
title	THE TRANSFORMATION OF GALAXIES IN CLUSTERS	Proposal title
observer	Dr. Christine Jones	Principal investigator
object	NGC 4438	Source name
dtcycle	0	
cycle	P	events from which exps? Prim/Second/Both
ra_targ	186.94	Observer's specified target RA [deg]
dec_targ	13.008889	Observer's specified target Dec [deg]
ra_nom	186.94346519902	Nominal RA [deg]
dec_nom	13.01799627693	Nominal Dec [deg]
roll_nom	79.935759455676	Nominal Roll [deg]
revision	3	Processing version of data
ontime	25403.883765504	Sum of GTIs [s]
livetime	25071.96332204	Livetime [s]
ontime2	25400.578605339	Sum of GTIs [s]
ontime3	25400.660705239	Sum of GTIs [s]
ontime6	25403.8427255	Sum of GTIs [s]
ontime7	25403.883765504	Sum of GTIs [s]
ontime8	25403.760645509	Sum of GTIs [s]
l2events	188132	Number of level 2 events



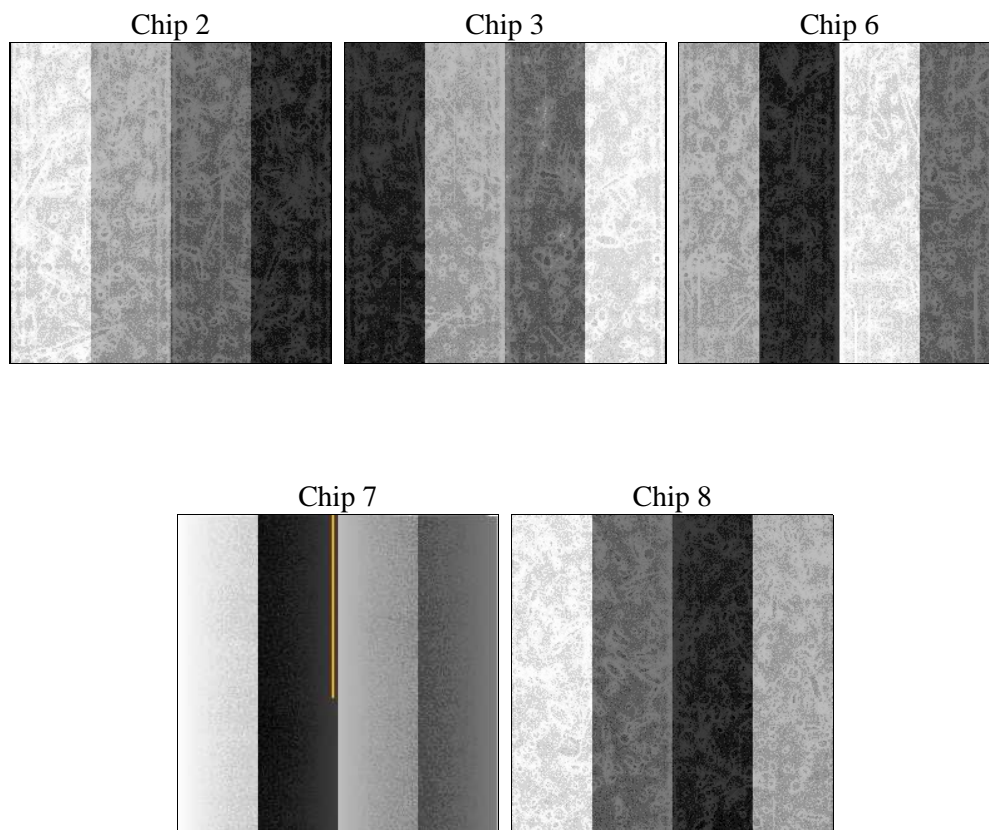
2 OBI

2.1 OBI

2.1.1 Images



2.1.2 Bias



2.1.3 Parameters

obi_num	0	Obi number	sched_exp_time	25300.000000	[s] Scheduled observation exposure time
ascdsver	8.4.5	Processing system revision	ontime	25403.883765504	Sum of GTIs [s]
caldbver	4.5.2	 	ontime2	25400.578605339	Sum of GTIs [s]
date	2012-10-01T05:40:46	Date and time of file creation	ontime3	25400.660705239	Sum of GTIs [s]
revision	3	Processing version of data	ontime6	25403.8427255	Sum of GTIs [s]
			ontime7	25403.883765504	Sum of GTIs [s]
			ontime8	25403.760645509	Sum of GTIs [s]
			l1events	929960	Number of level 1 events

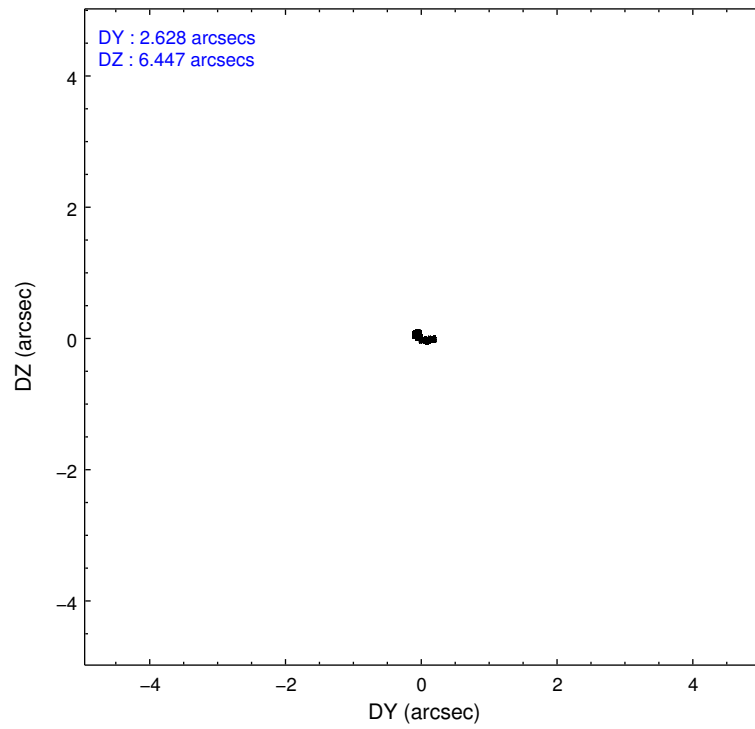
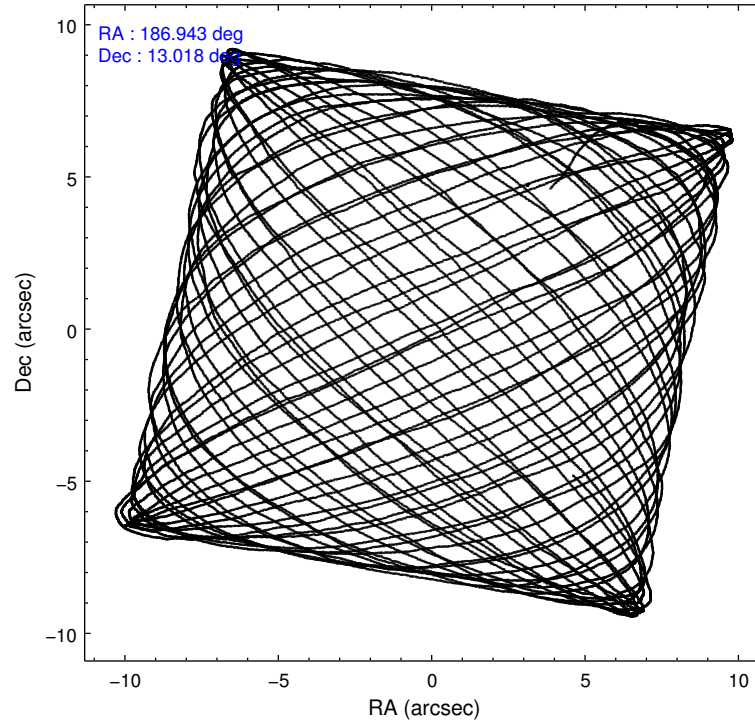
2.1.4 Events

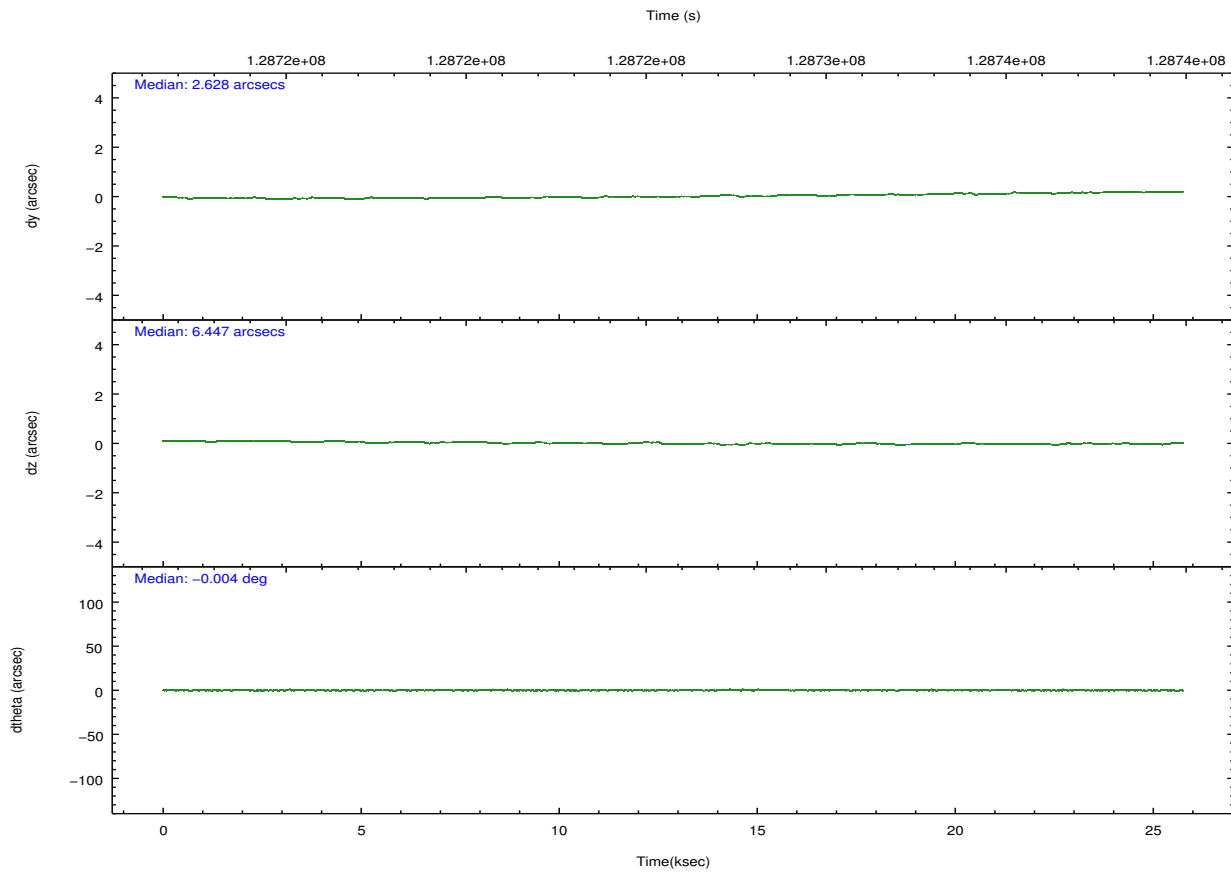
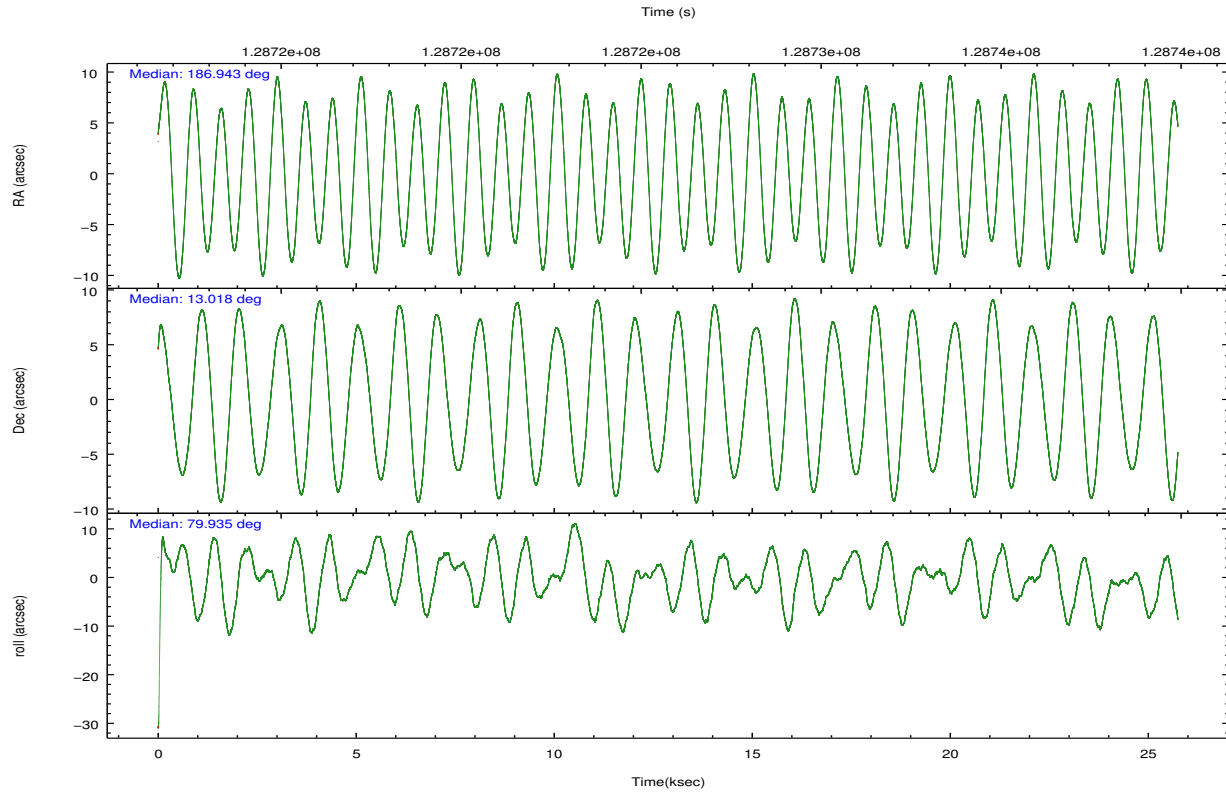
	ccd 2	ccd 3	ccd 6	ccd 7	ccd 8		ccd 2	ccd 3	ccd 6	ccd 7	ccd 8
level 1 events	164013	162175	173167	222248	208357	grade 0 events	12279	12694	14183	13398	18047
rejected events	140305	137903	146473	121781	160765		7%	7%	8%	6%	8%
rejected %	85%	85%	84%	54%	77%	grade 1 events	70	78	80	214	150
							0%	0%	0%	0%	0%
						grade 2 events	4441	4358	4604	20849	9622
							2%	2%	2%	9%	4%
						grade 3 events	1793	1931	1996	9532	4742
							1%	1%	1%	4%	2%
						grade 4 events	1908	1863	2020	9257	4460
							1%	1%	1%	4%	2%
						grade 5 events	5565	6288	6899	19852	8765
							3%	3%	3%	8%	4%
						grade 6 events	3290	3433	3906	47446	10730
							2%	2%	2%	21%	5%
						grade 7 events	134667	131530	139479	101700	151841
							82%	81%	80%	45%	72%

2.2 Compared Parameters

Parameter	Planned	Actual	Parameter	Planned	Actual
Instrument	ACIS	ACIS	Obspar format version number	7	7
Detector	ACIS-23678	ACIS-23678	Obspar file type	PREDICTED	ACTUAL
Grating	NONE	NONE	Obspar update status	NONE	UPDATED
Data mode	VFAINT	VFAINT	Number of optional ACIS chips dropped	0	0
Observation mode	POINTING	POINTING	On-chip summing requested	N	N
[deg] Pointing RA	186.953306	186.9434651990177	Subarray requested	NONE	NONE
[deg] Pointing Dec	12.992500	13.01799627692989	Alternating exposures requested	N	N
[deg] Pointing Roll	79.776938	79.93575945567592	[s] Primary exposure time	0.000000	3.1
[mm] SIM focus pos	-0.684267	-0.6828225247311905			
[mm] SIM defocus	0	0.001444936568705701			
[mm] SIM translation stage pos	-193.132523	-193.1371298893314			
[mm] SIM translation stage offset	3	3.004607306323607			
[s] Observation start time (MET)	128713321.184000	128712229.16169			
Observation start date	2002-01-29T17:40:57	2002-01-29T17:23:49			
[s] Observation end time (MET)	128738621.184000	128739388.58779			
Observation end date	2002-01-30T00:42:37	2002-01-30T00:56:28			
Read mode	TIMED	TIMED			

2.3 Aspect



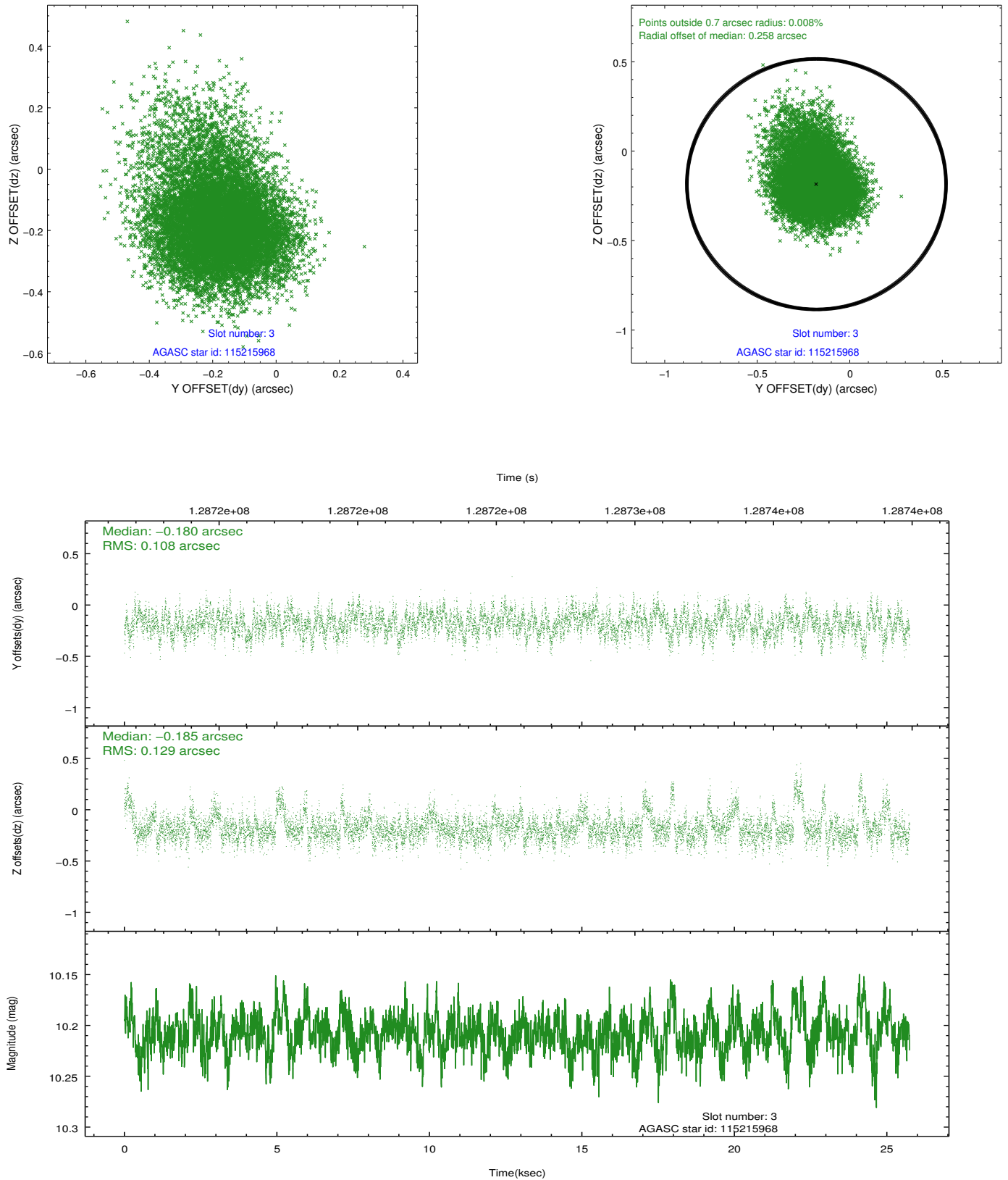


Slot Statistics

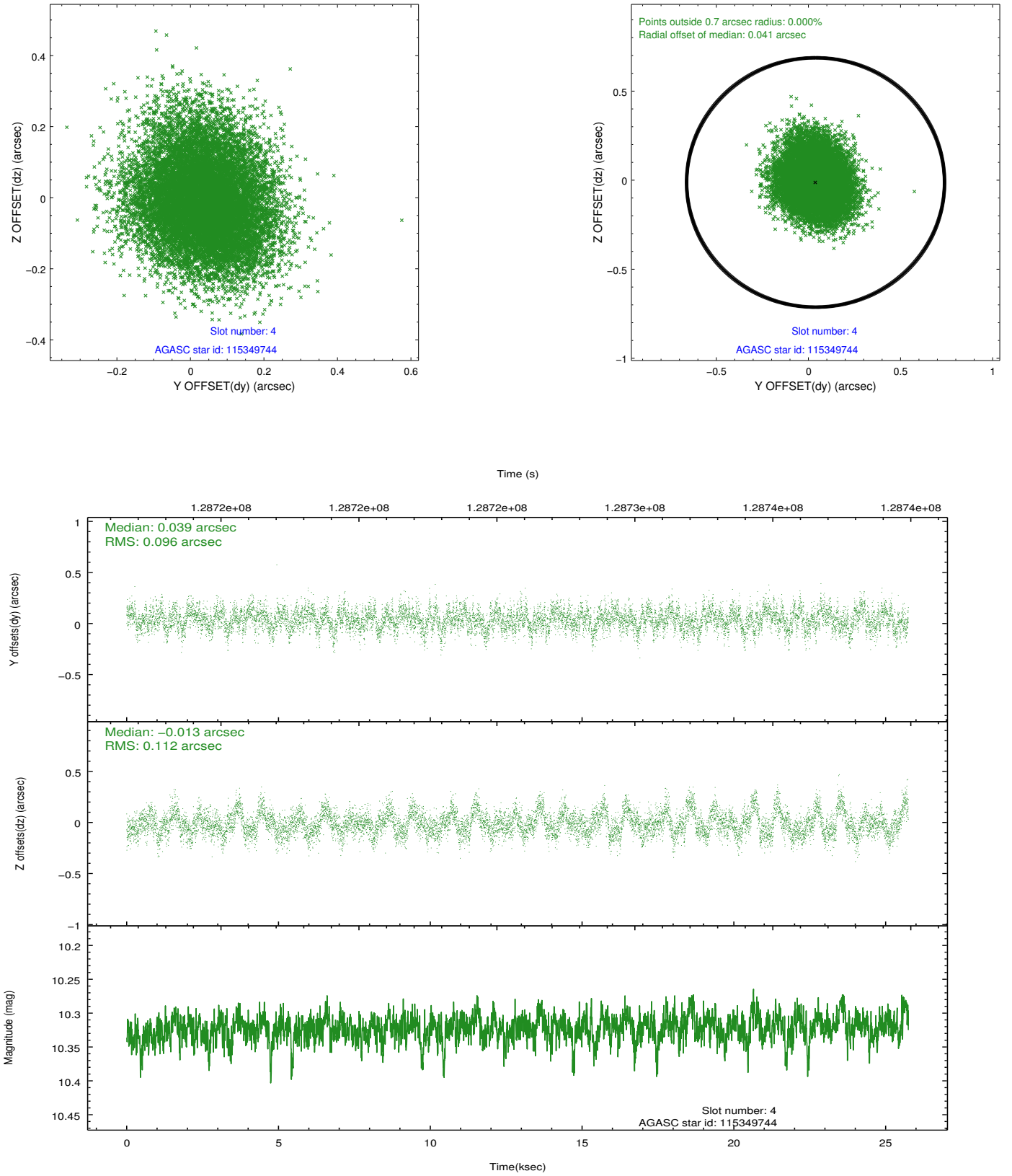
slot	status	id	mag	n_pts	med_dy	med_dz	dr1	dr2	ra	dec	mean_y	mean_z
0	FID	ACIS-S-2	7.11	6281	-0.017	0.032	0.007	0.011	0.000000	0.000000	-755.50	-1665.80
1	FID	ACIS-S-4	7.21	6281	-0.024	-0.000	0.006	0.010	0.000000	0.000000	2157.73	242.53
2	FID	ACIS-S-5	7.24	6281	0.010	-0.023	0.007	0.012	0.000000	0.000000	-1808.17	236.33
3	GUIDE	115215968	10.21	12545	-0.180	-0.185	0.170	0.304	186.327588	13.159527	205.33	2265.17
4	GUIDE	115349744	10.32	12551	0.039	-0.013	0.158	0.255	186.878186	12.752529	-896.49	105.90
5	GUIDE	114952792	9.50	12551	0.173	0.187	0.106	0.178	187.070263	12.344747	-2221.38	-818.86
6	GUIDE	115348424	9.51	12552	0.025	0.101	0.083	0.140	187.199498	13.087929	491.97	-788.96
7	GUIDE	115347400	10.21	12328	-0.051	-0.115	0.175	0.289	186.994146	13.445598	1631.09	148.31

2.4 Star Slots

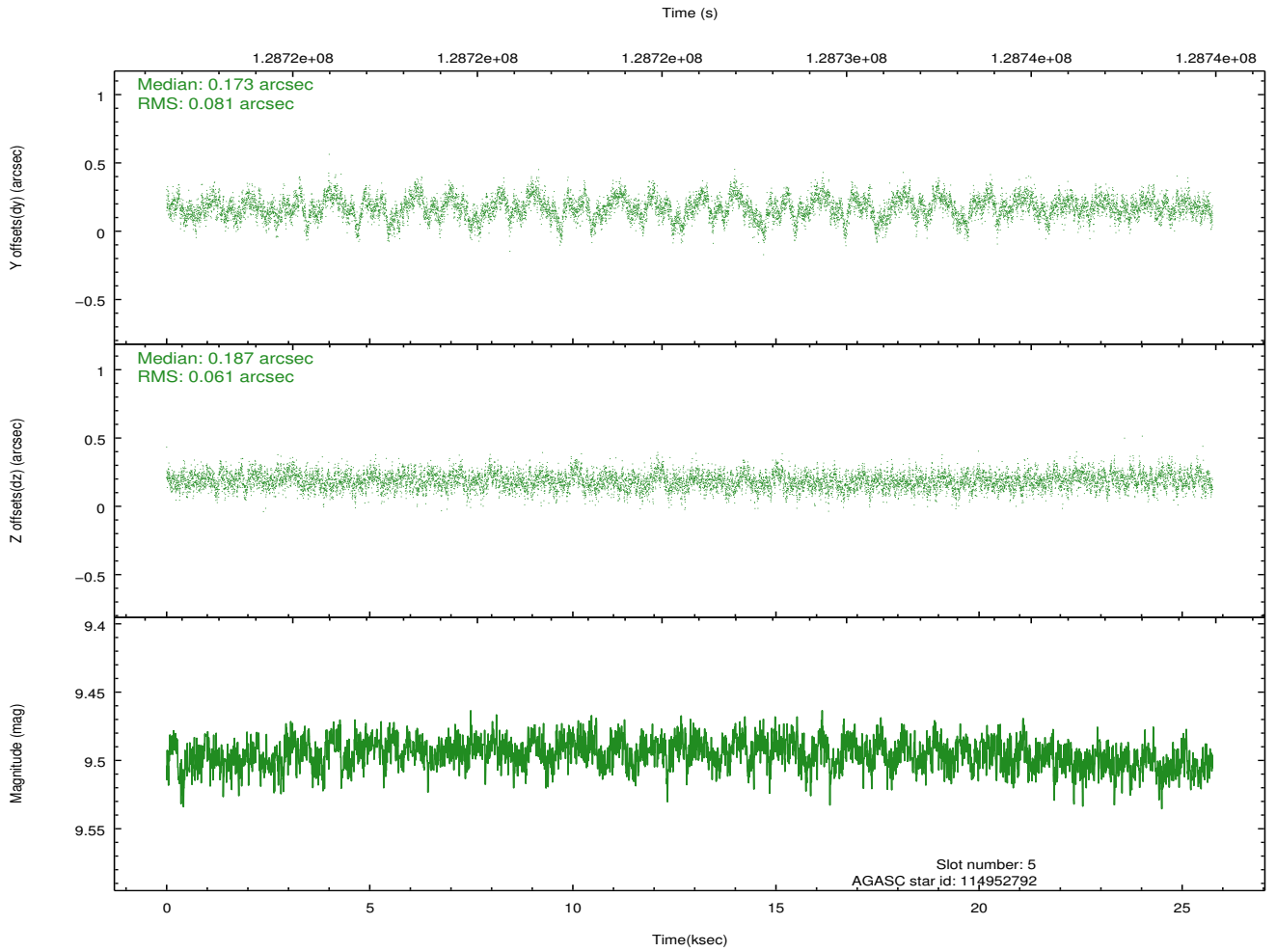
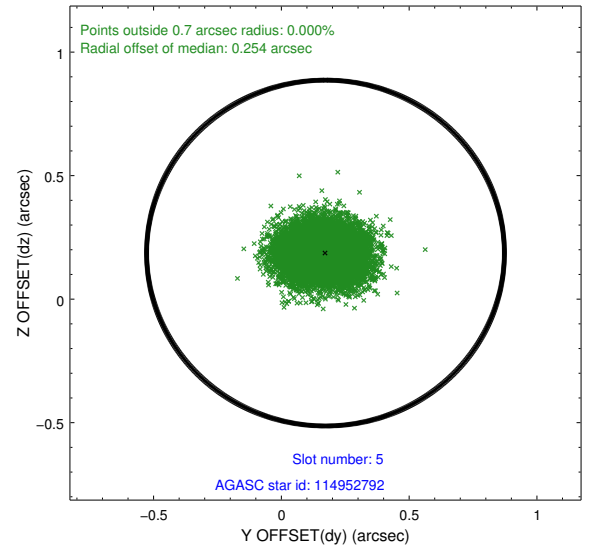
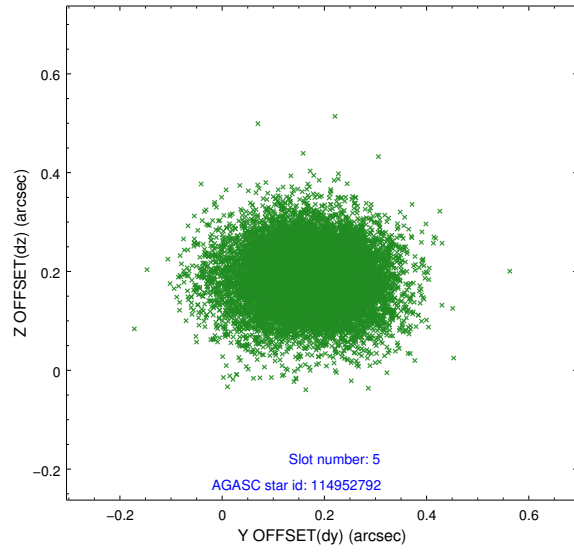
2.4.1 Slot 3



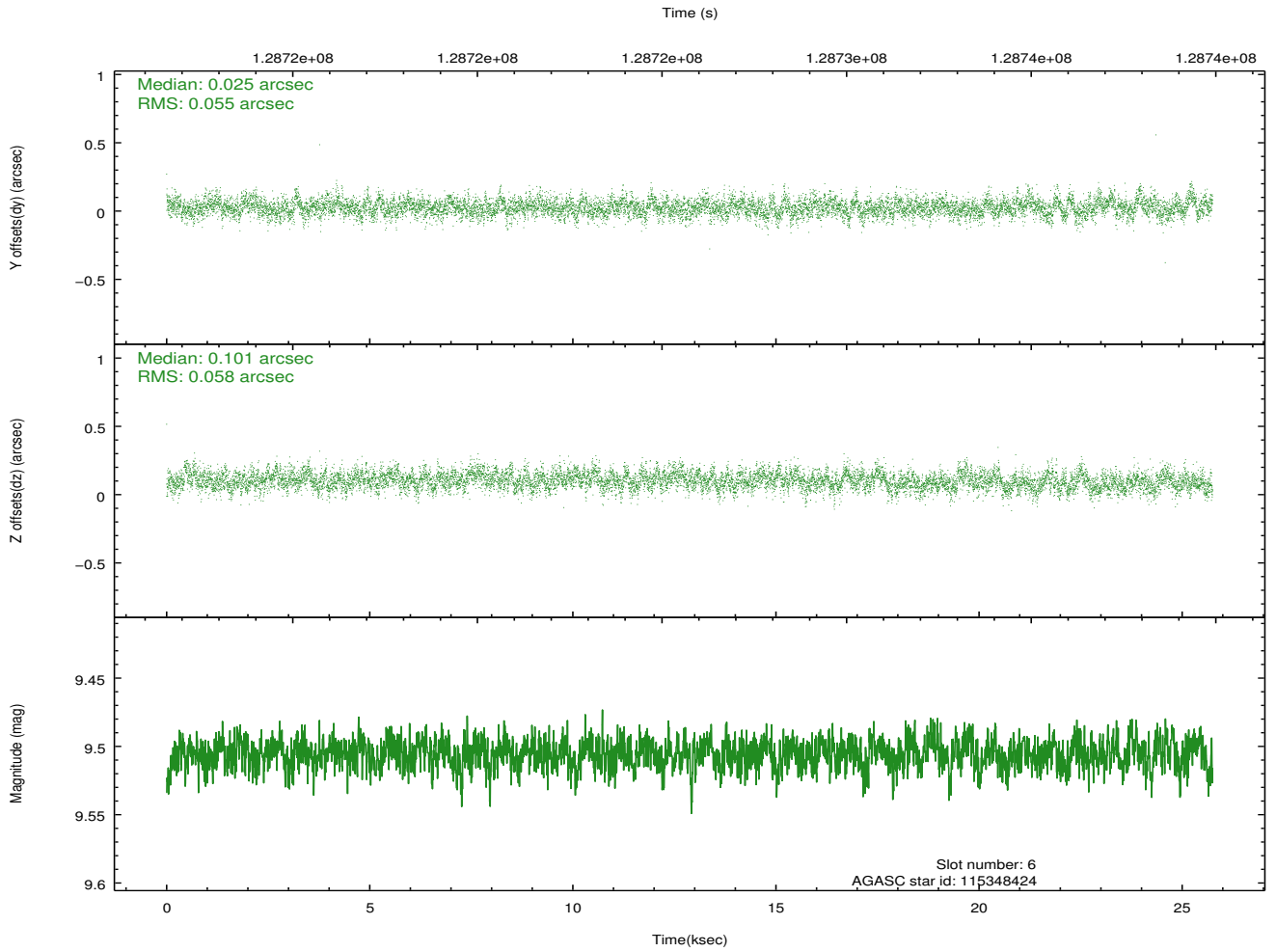
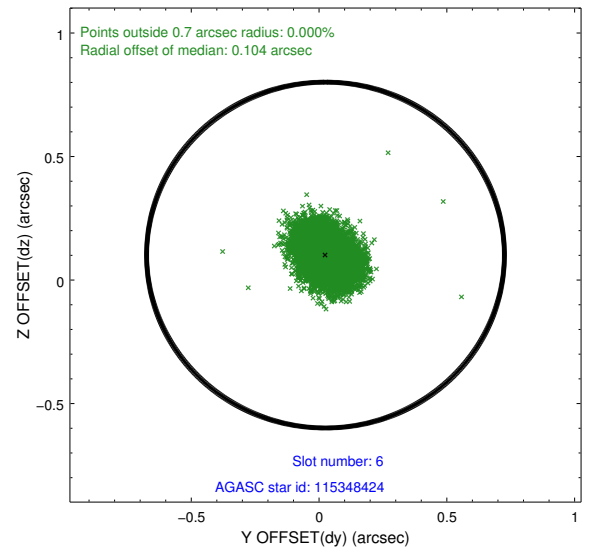
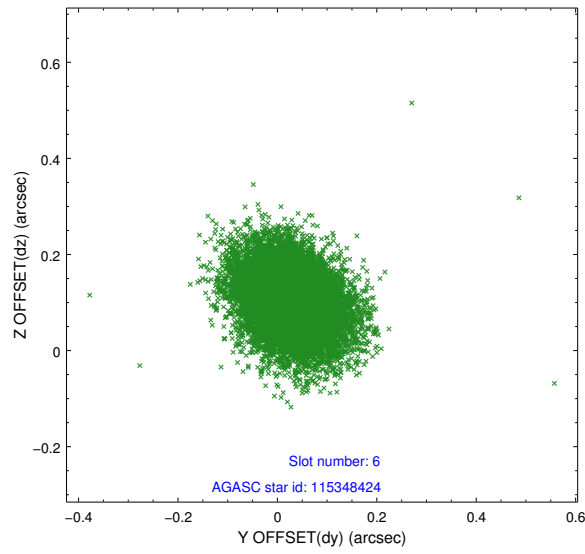
2.4.2 Slot 4



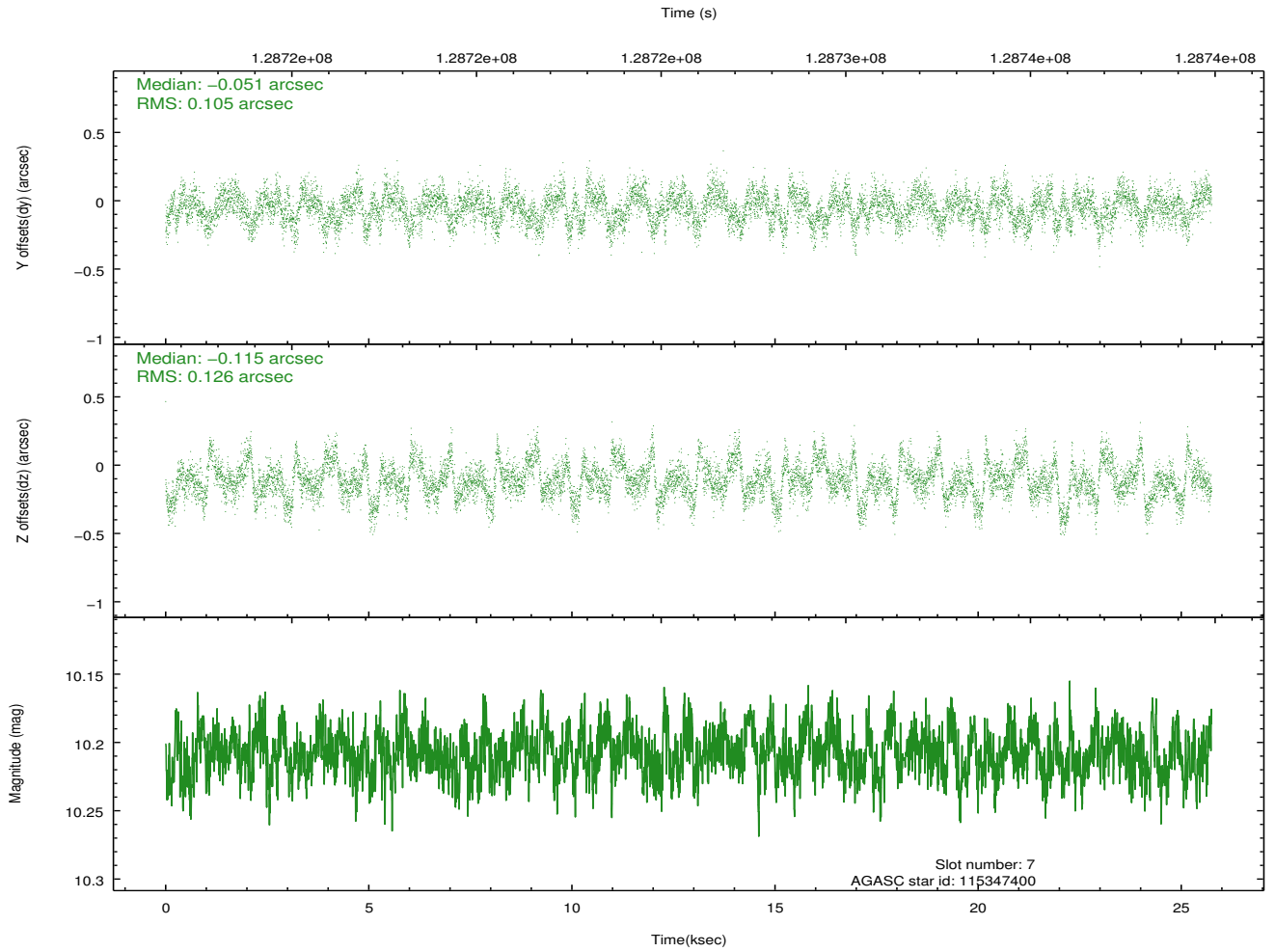
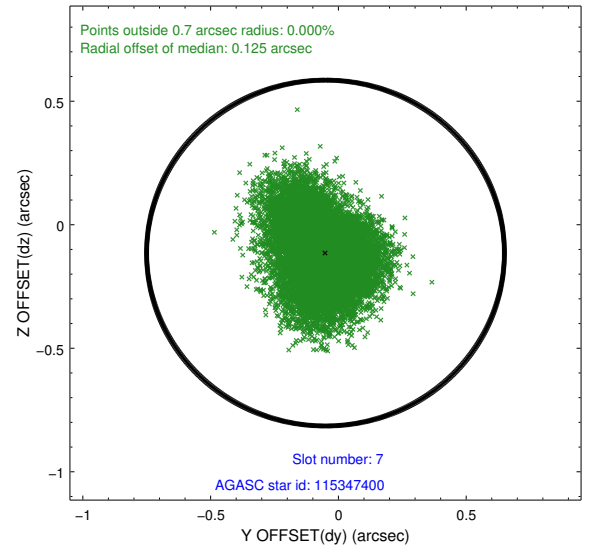
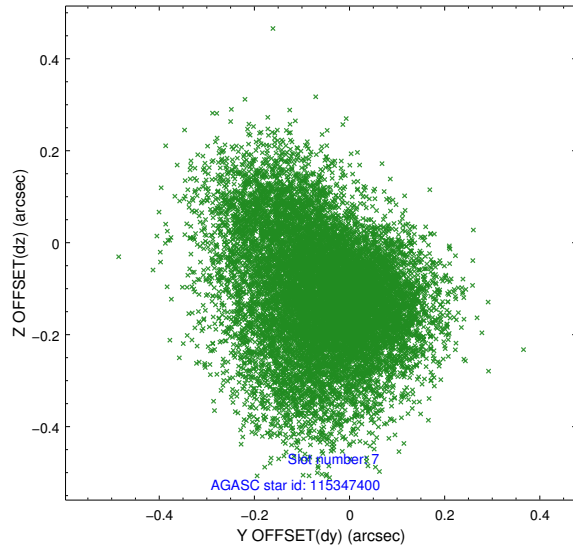
2.4.3 Slot 5



2.4.4 Slot 6

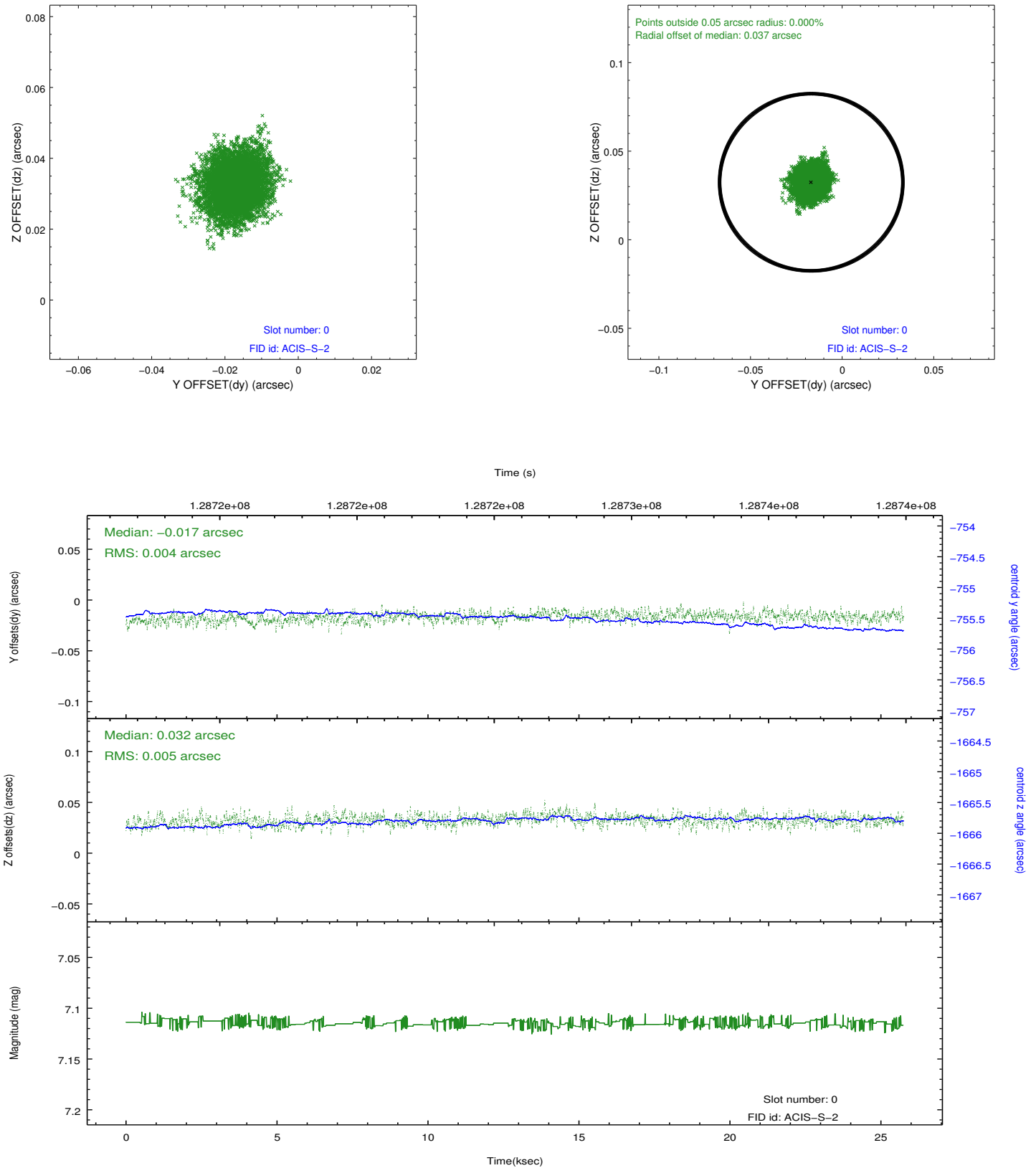


2.4.5 Slot 7

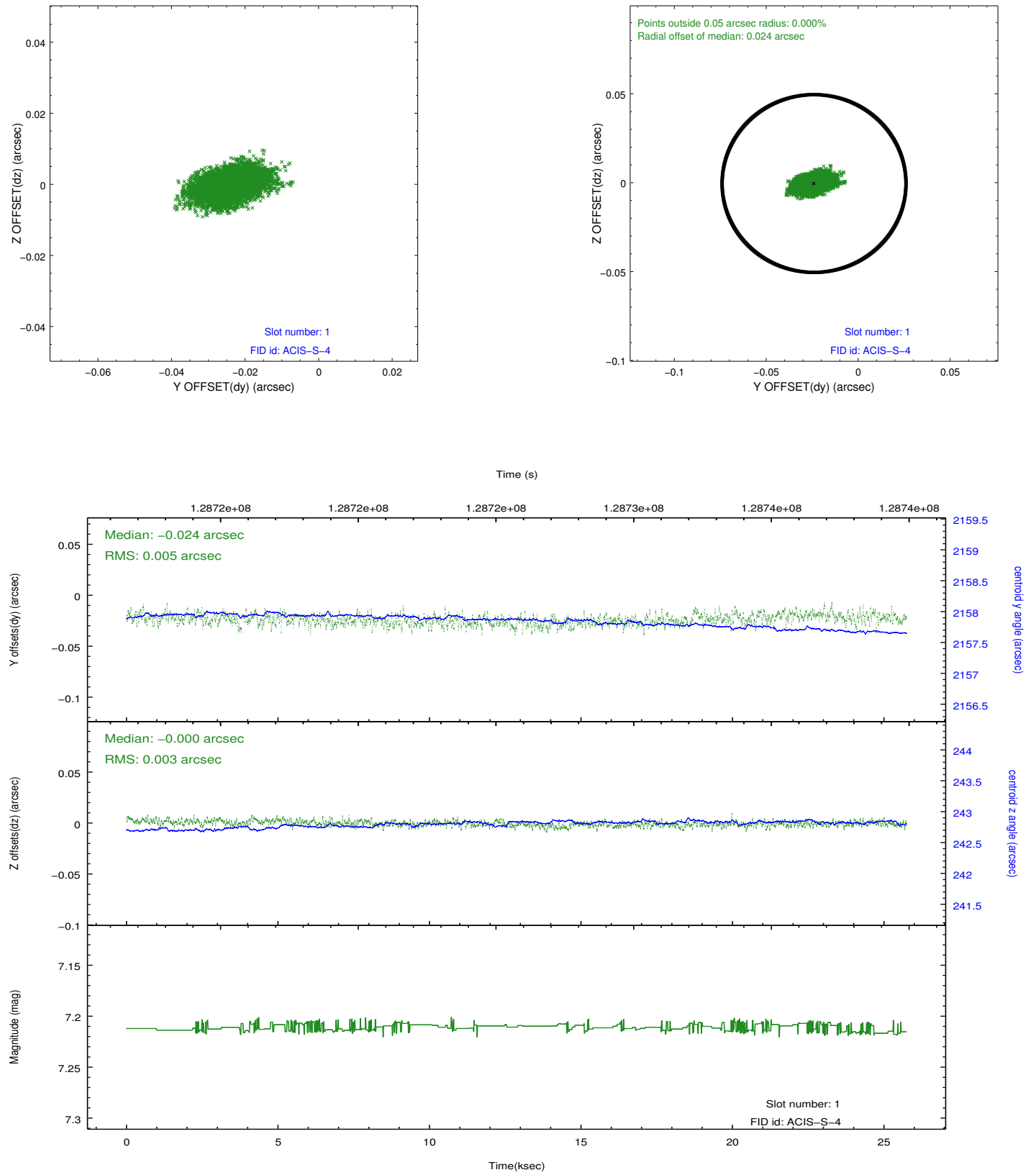


2.5 FID Slots

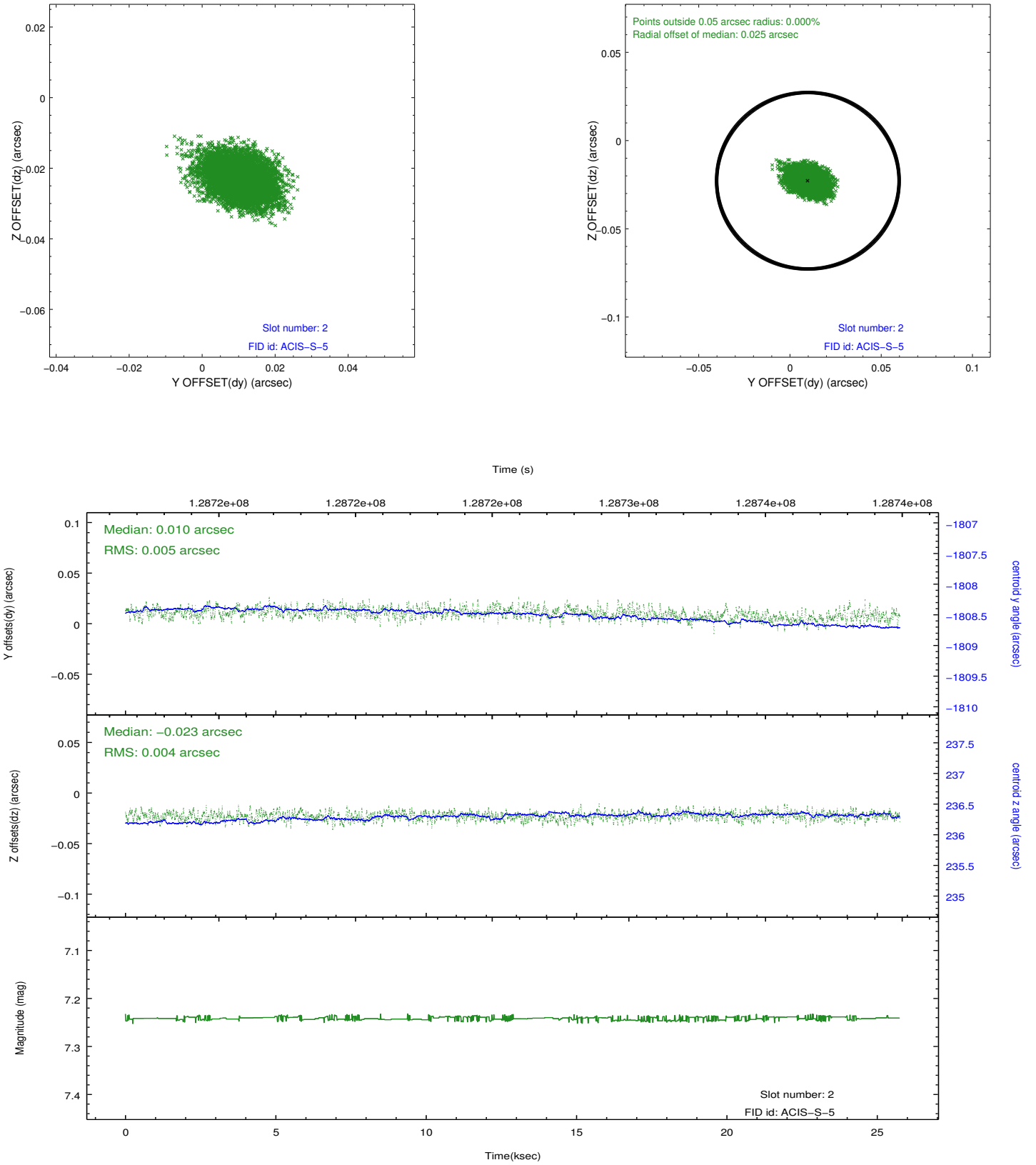
2.5.1 Slot 0



2.5.2 Slot 1



2.5.3 Slot 2



A Summary

A.1 Status

V&V Scientist	Jen Lauer
V&V Date (YYYY-MM-DD)	2012.10.03
V&V Edition	1
V&V Disposition and Status	OK
V&V Charge Time	25.404

A.2 Comments