

V&V Reference Report

L2 ASCDS Version : 7.6.9

Observation 4381 - L2 Version 001
Chandra X-Ray Center

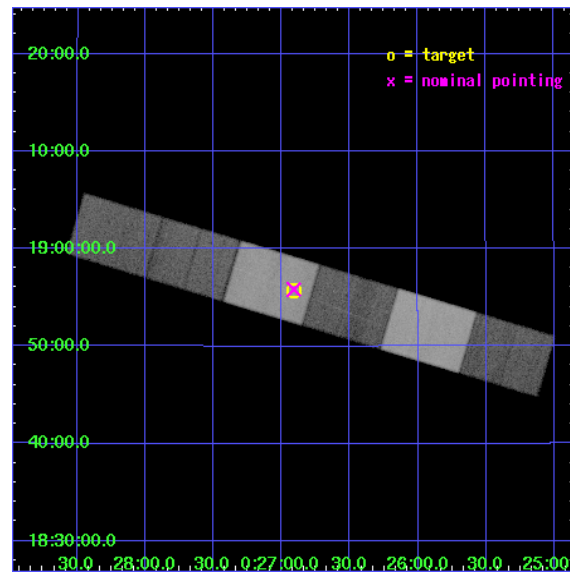
L2 Processing Date : Oct 13 2006

Contents

1	Front	2
2	OBI	3
2.1	OBI	3
2.1.1	Images	3
2.1.2	Bias	3
2.1.3	Parameters	4
2.1.4	Events	4
2.2	Compared Parameters	5
2.3	Aspect	6
2.4	Star Slots	9
2.4.1	Slot 3	9
2.4.2	Slot 4	10
2.4.3	Slot 5	11
2.4.4	Slot 6	12
2.4.5	Slot 7	13
2.5	FID Slots	14
2.5.1	Slot 0	14
2.5.2	Slot 1	15
2.5.3	Slot 2	16
3	Gratings	17
3.1	HEG Arm	17
3.2	MEG Arm	19
A	Summary	21
A.1	Status	21
A.2	Comments	21

1 Front

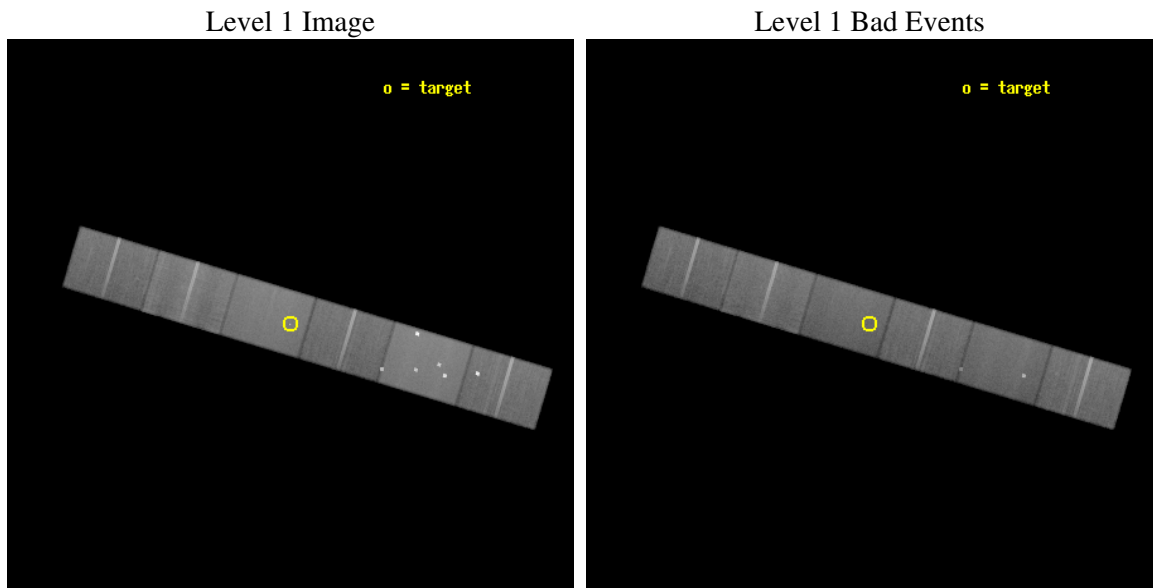
seq_num	500405
obs_id	4381
title	SPECTROSCOPIC OBSERVATIONS OF THE BRIGHT AFTERGLOW OF GRB021004
observer	PROF FIONA HARRISON
object	GRB021004
dtcycle	0
cycle	P
ra_targ	6.726667
dec_targ	18.928611
ra_nom	6.7276487306873
dec_nom	18.930632721494
roll_nom	196.62122275967
revision	2
ontime	88130.0
livetime	86706.62405944
ontime4	88127.45901978
ontime5	88130.0
ontime6	88130.0
ontime7	88130.0
ontime8	88119.836049169
ontime9	88119.836079121
l2events	636963



2 OBI

2.1 OBI

2.1.1 Images

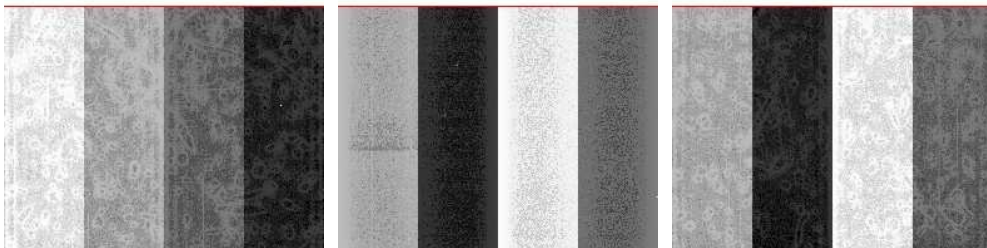


2.1.2 Bias

Chip 4

Chip 5

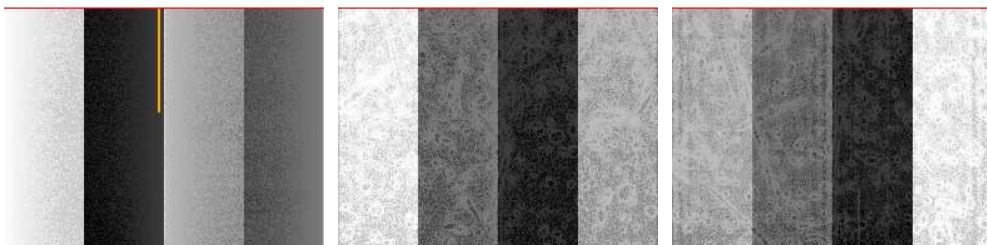
Chip 6



Chip 7

Chip 8

Chip 9



2.1.3 Parameters

obi_num	0
ascdsver	7.6.9
caldsver	3.2.3
date	2006-10-05T22:31:33
revision	2

sched_exp_time	88000.000000
ontime	89169.247713417
ontime4	89166.706713289
ontime5	89169.247693509
ontime6	89169.247693509
ontime7	89169.247713417
ontime8	89159.083742678
ontime9	89159.083772629
l1events	3165362

2.1.4 Events

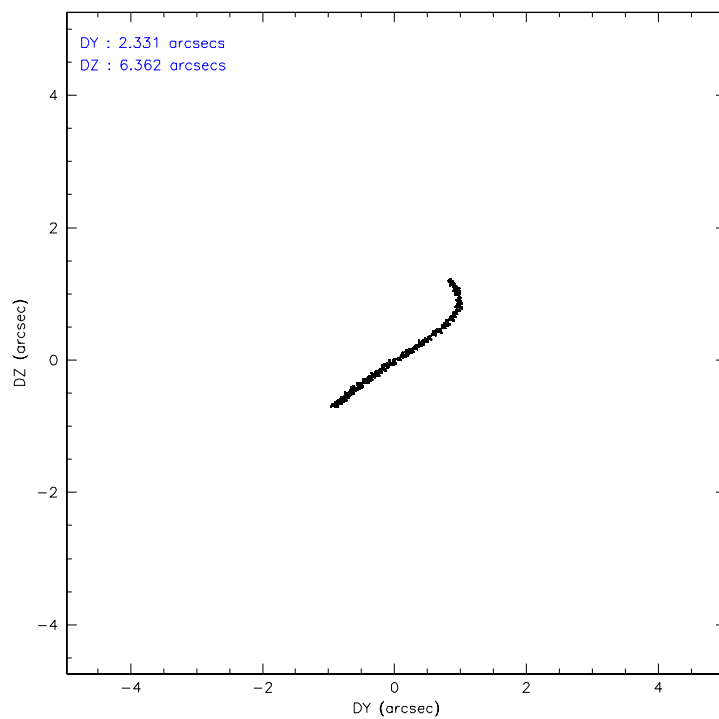
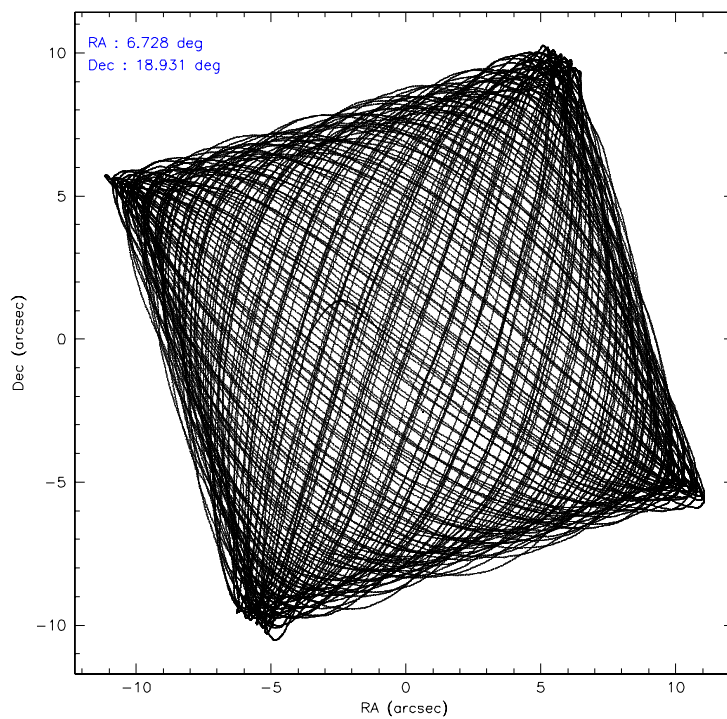
	ccd 4	ccd 5	ccd 6	ccd 7	ccd 8	ccd 9
level 1 events	502523	685847	436692	560048	550948	429304
rejected events	423386	359656	387266	345704	440389	378429
rejected %	84%	52%	88%	61%	79%	88%

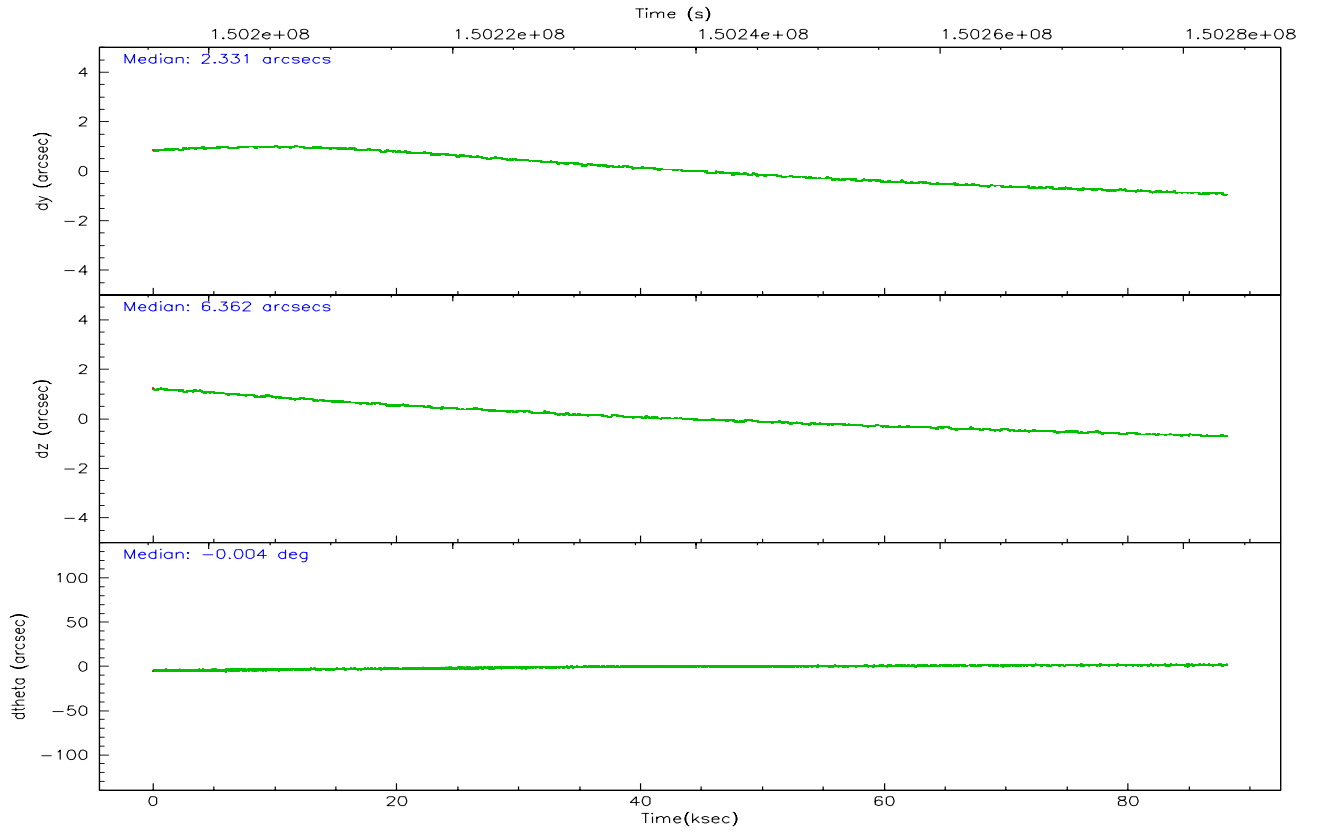
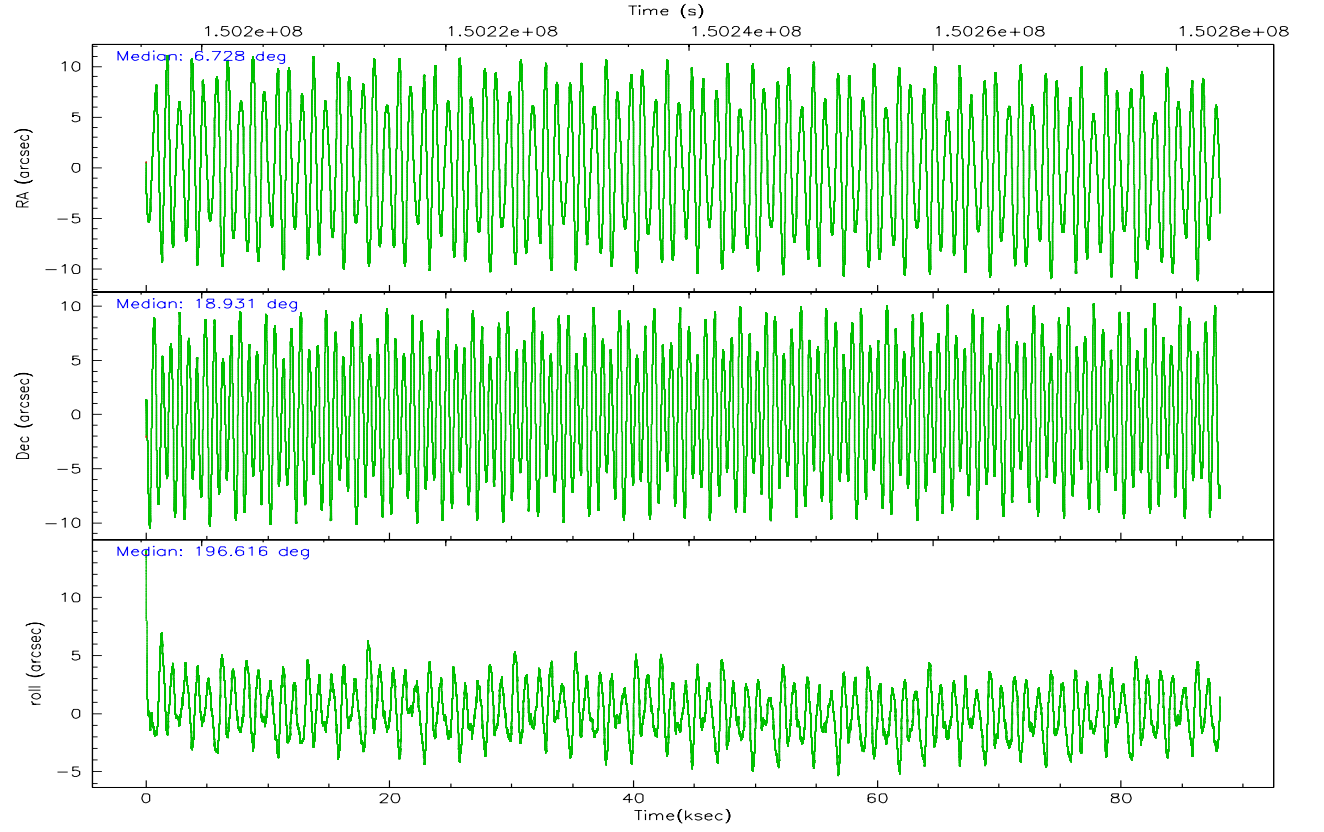
	ccd 4	ccd 5	ccd 6	ccd 7	ccd 8	ccd 9
grade 0 events	49103	66257	19502	12226	34132	20633
	9%	9%	4%	2%	6%	4%
grade 1 events	463	1725	155	331	337	218
	0%	0%	0%	0%	0%	0%
grade 2 events	10961	92675	10046	52230	23704	9783
	2%	13%	2%	9%	4%	2%
grade 3 events	5755	7850	5411	12791	12473	5646
	1%	1%	1%	2%	2%	1%
grade 4 events	5555	7294	5328	12515	11620	5507
	1%	1%	1%	2%	2%	1%
grade 5 events	17617	34871	19010	40051	24127	19745
	3%	5%	4%	7%	4%	4%
grade 6 events	8582	155701	9707	127026	29890	9934
	1%	22%	2%	22%	5%	2%
grade 7 events	404487	319474	367533	302878	414665	357838
	80%	46%	84%	54%	75%	83%

2.2 Compared Parameters

Parameter	Planned	Actual	Parameter	Planned	Actual
Instrument	ACIS	ACIS	Obspar format version number	6	6
Detector	ACIS-456789	ACIS-456789	Obspar file type	PREDICTED	ACTUAL
Grating	HETG	HETG	Obspar update status	NONE	UPDATED
Data mode	FAINT	FAINT	Number of optional ACIS chips dropped	0	0
Observation mode	POINTING	POINTING	On-chip summing requested	N	N
Pointing RA	6.747150	6.727648730687312	Subarray requested	CUSTOM	CUSTOM
Pointing Dec	18.950671	18.93063272149396	Subarray start row	1	1
Pointing Roll	196.458269	196.6212227596674	Subarray row count	774	774
SIM focus pos (mm)	-0.684267	-0.6828225247311905	Alternating exposures requested	N	N
SIM defocus (mm)	0	0.001444936568705701	Primary exposure time	0.000000	2.5
SIM translation stage pos (mm)	-187.132523	-187.1228876879999			
SIM translation stage offset (mm)	-3	-3.009634895007935			
Observation start time	150195563.184000	150194101.62709			
Observation start date	2002-10-05T08:58:19	2002-10-05T08:35:01			
Observation end time	150283563.184000	150284188.88083			
Observation end date	2002-10-06T09:24:59	2002-10-06T09:36:28			
Read mode	TIMED	TIMED			

2.3 Aspect



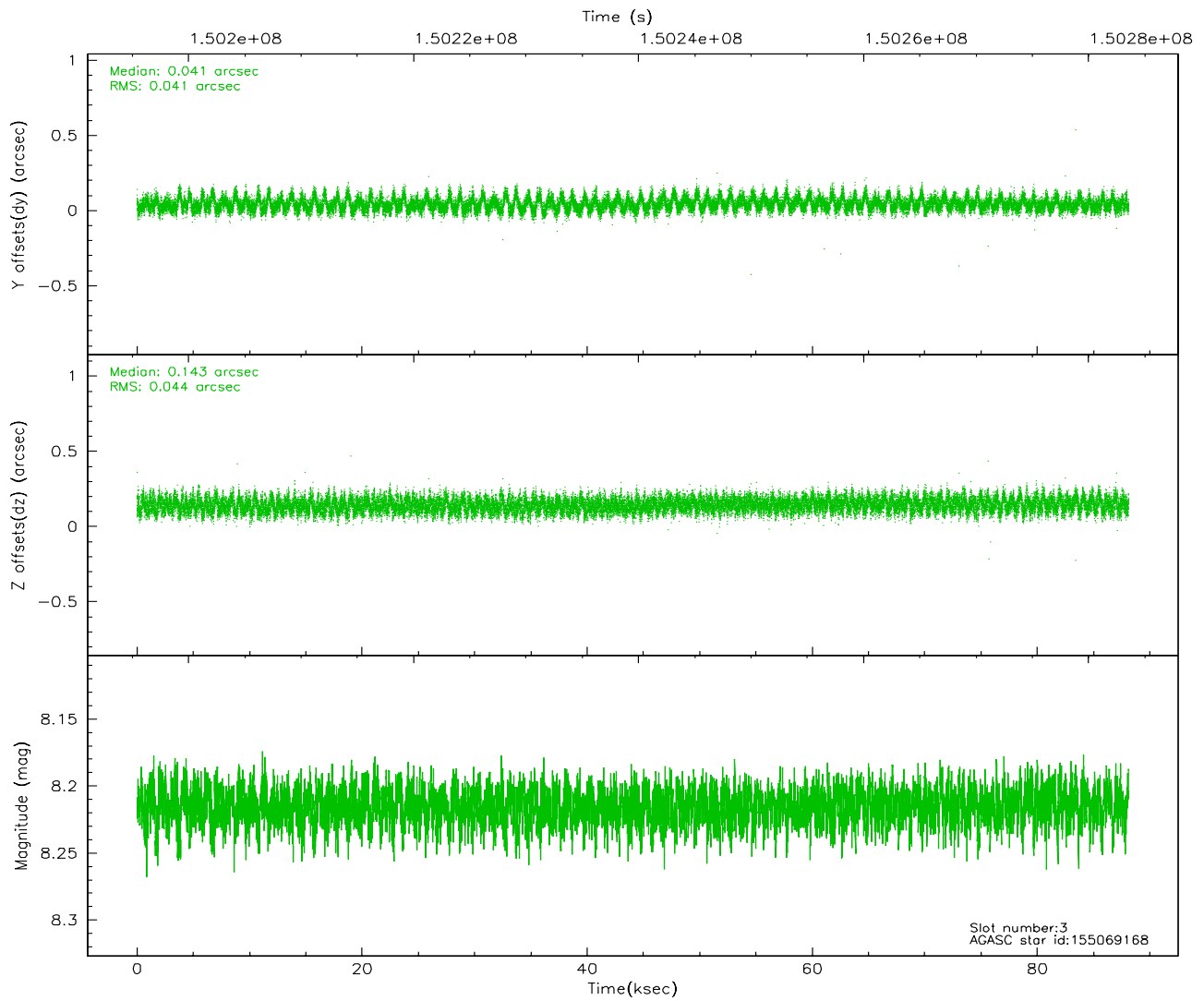
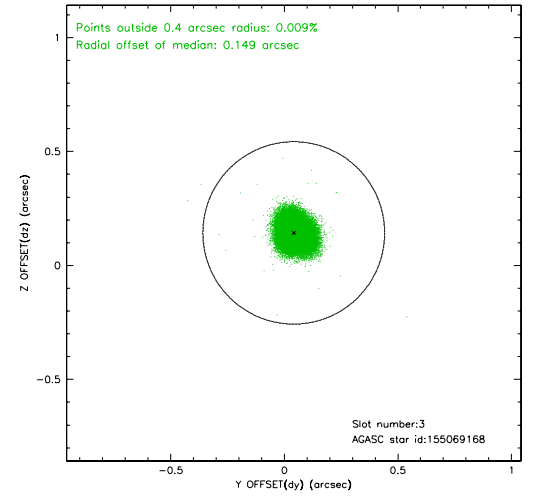
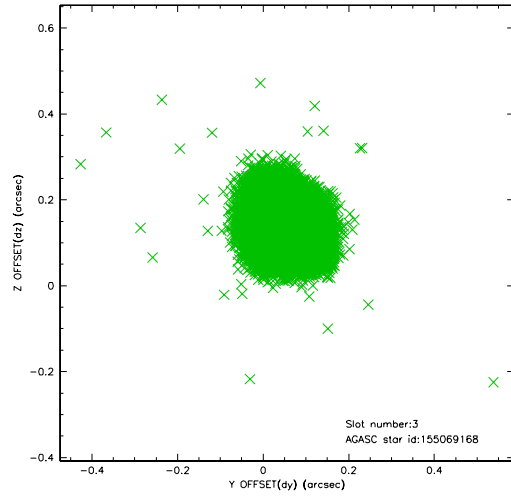


Slot Statistics

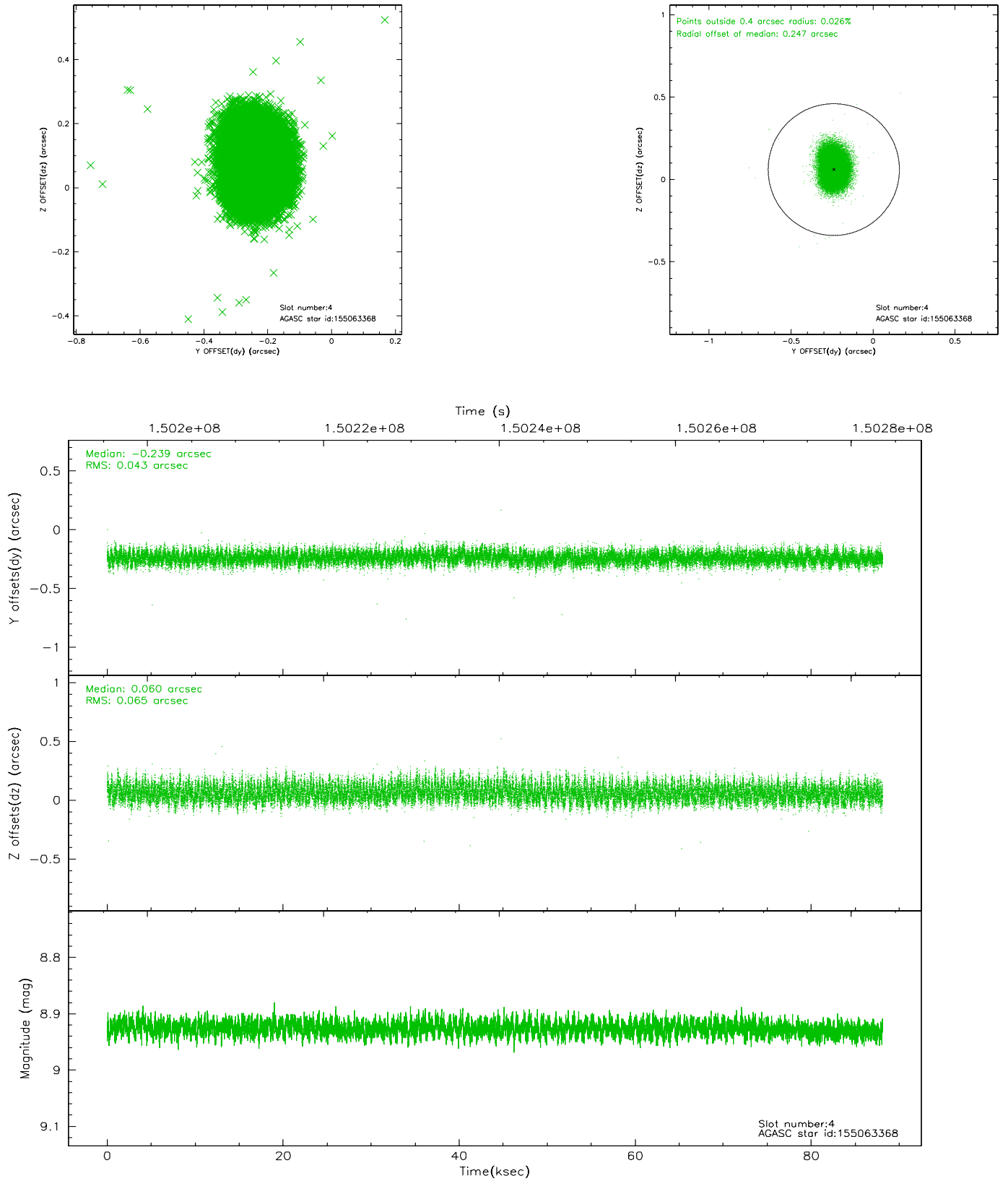
slot	status	id	mag	n_pts	med_dy	med_dz	dr1	dr2	ra	dec	mean_y	mean_z
0	FID	ACIS-S-2	7.10	21495	-0.032	-0.041	0.014	0.029	0.000000	0.000000	-754.84	-1789.77
1	FID	ACIS-S-4	7.20	21494	-0.022	0.027	0.014	0.024	0.000000	0.000000	2158.48	118.86
2	FID	ACIS-S-5	7.23	21493	0.022	0.025	0.014	0.027	0.000000	0.000000	-1807.73	112.43
3	GUIDE	155069168	8.21	42979	0.041	0.143	0.064	0.102	6.545753	18.572491	1045.20	1111.39
4	GUIDE	155063368	8.93	42972	-0.239	0.060	0.083	0.136	7.151424	19.702074	-2080.49	-2207.14
5	GUIDE	155071624	9.09	42906	0.046	-0.193	0.101	0.161	7.410885	18.489377	-1703.77	2230.79
6	GUIDE	155058904	9.12	42973	0.156	-0.006	0.105	0.158	6.904184	19.550952	-1122.50	-1921.21
7	GUIDE	155070392	9.15	42975	-0.004	0.000	0.082	0.135	6.440372	18.435960	1530.08	1480.18

2.4 Star Slots

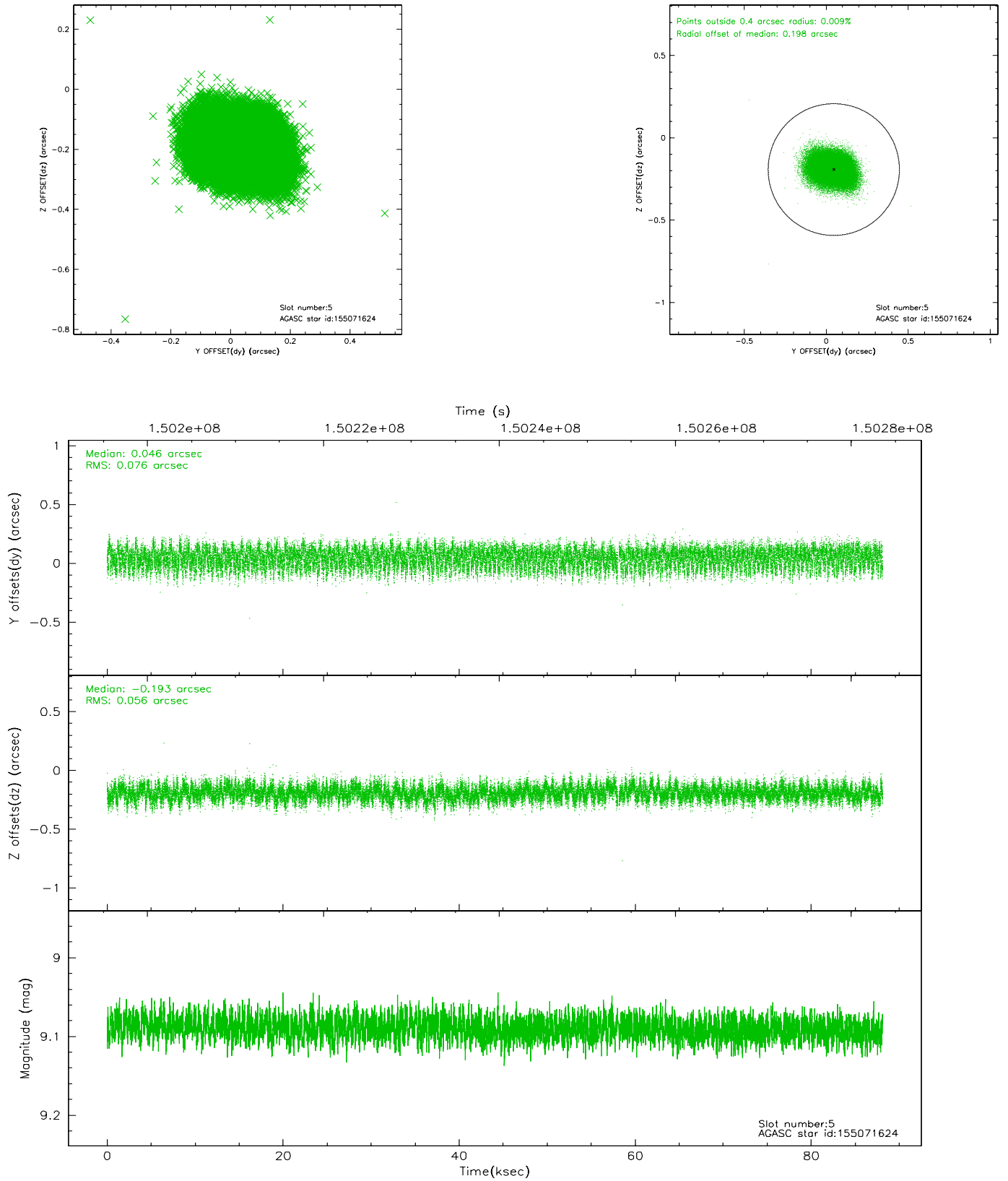
2.4.1 Slot 3



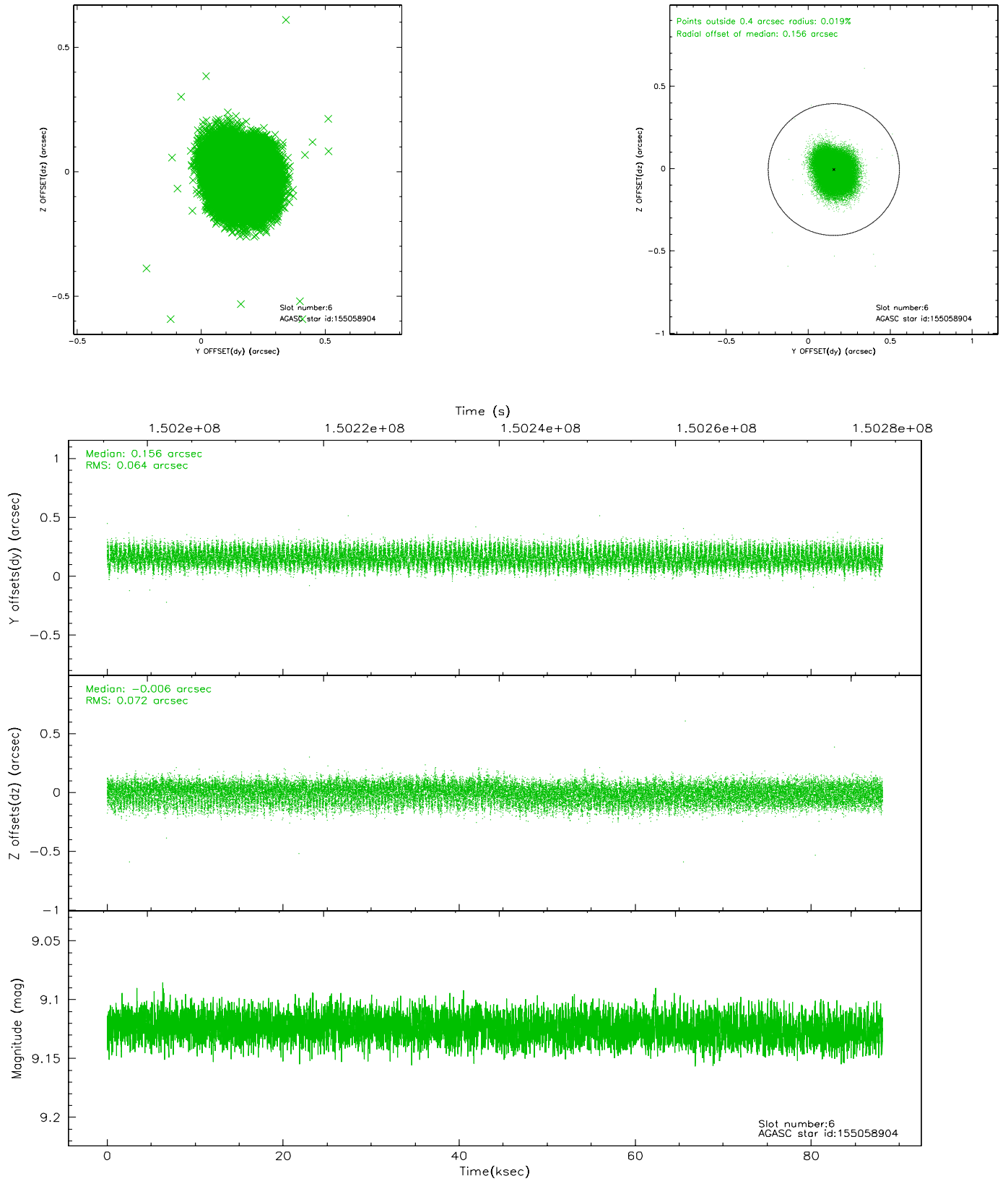
2.4.2 Slot 4



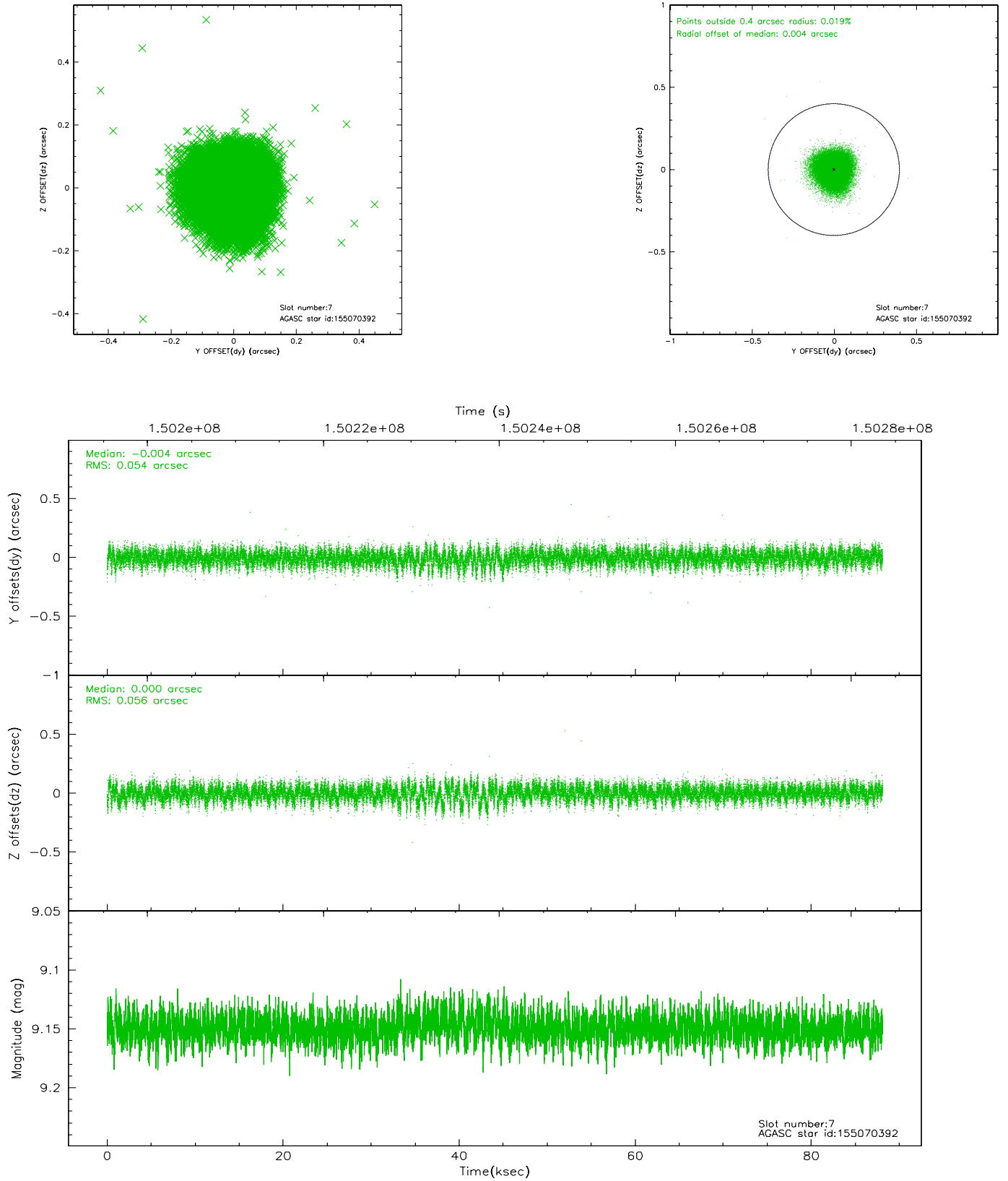
2.4.3 Slot 5



2.4.4 Slot 6

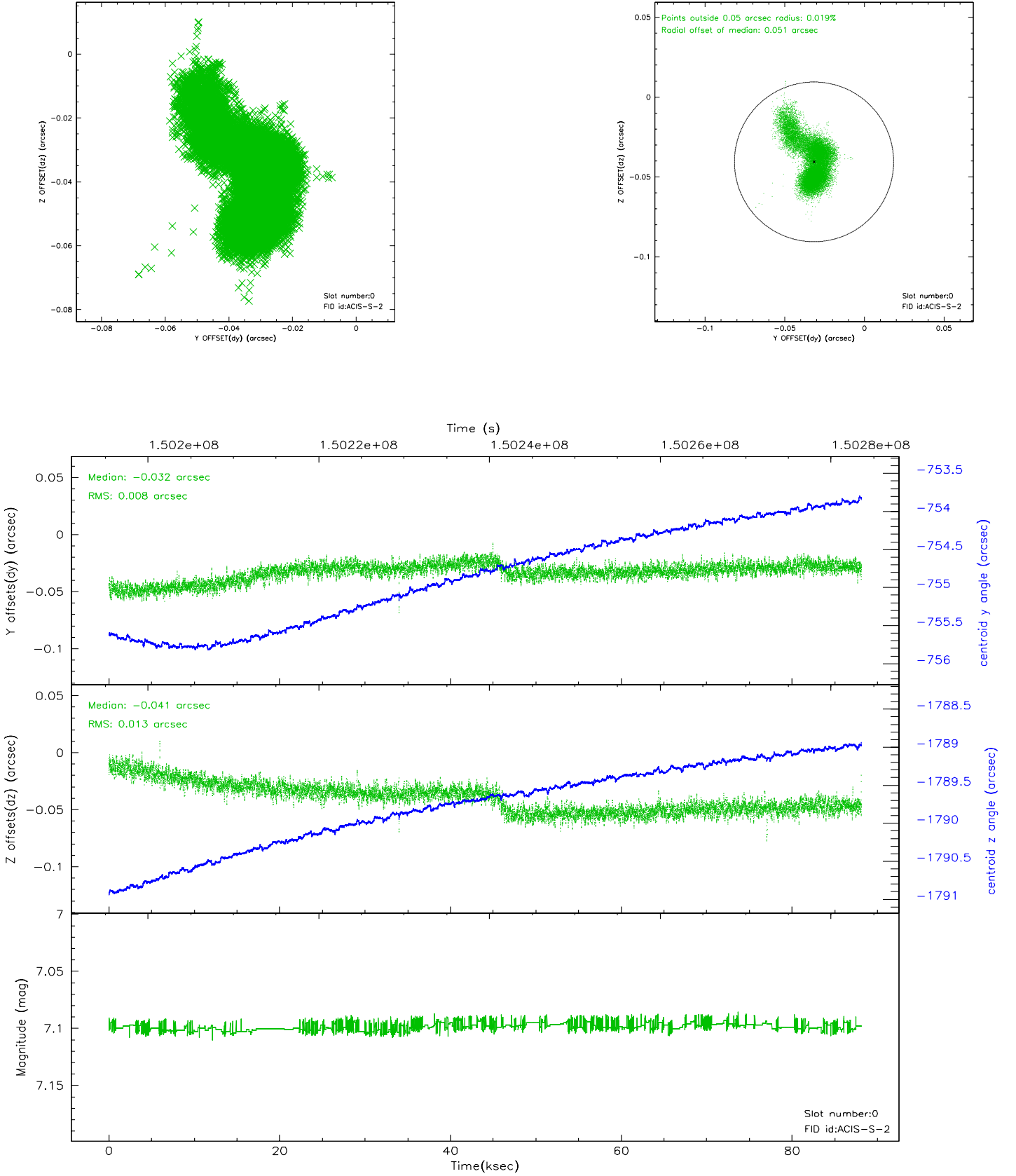


2.4.5 Slot 7

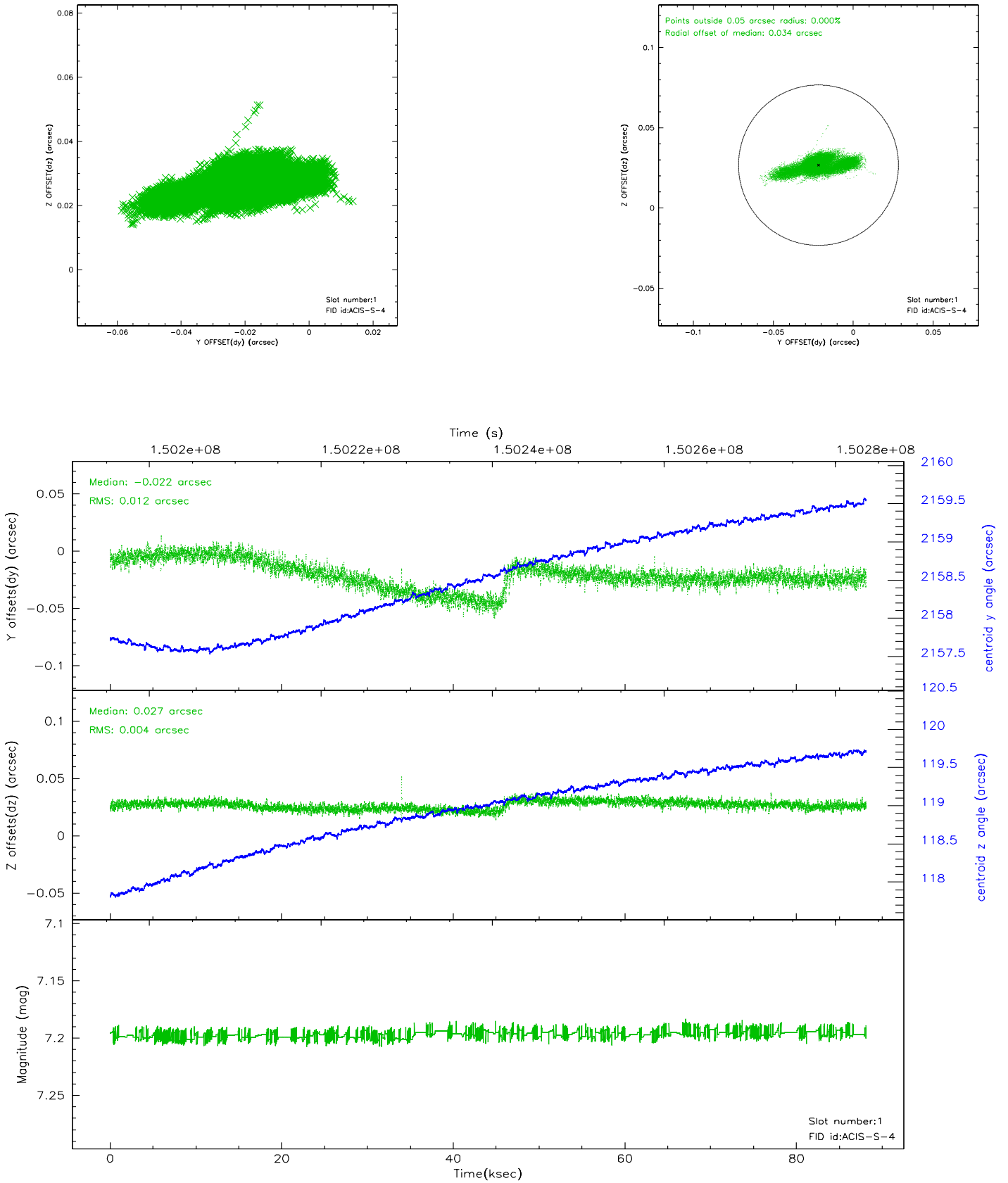


2.5 FID Slots

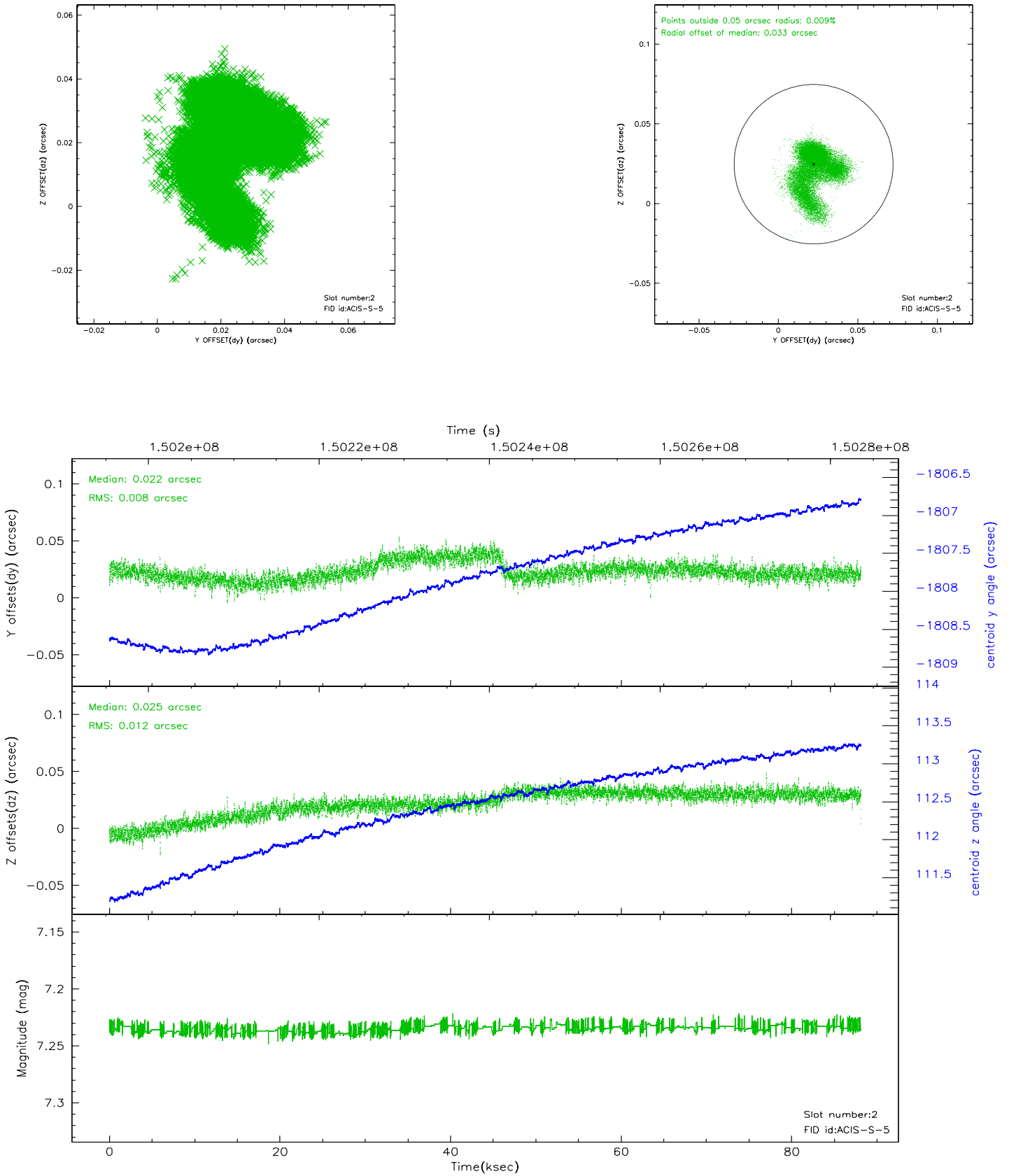
2.5.1 Slot 0



2.5.2 Slot 1



2.5.3 Slot 2

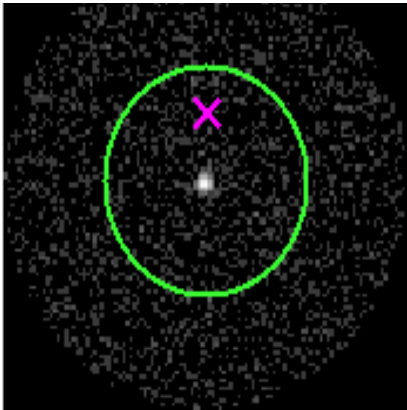


3 Gratings

3.1 HEG Arm



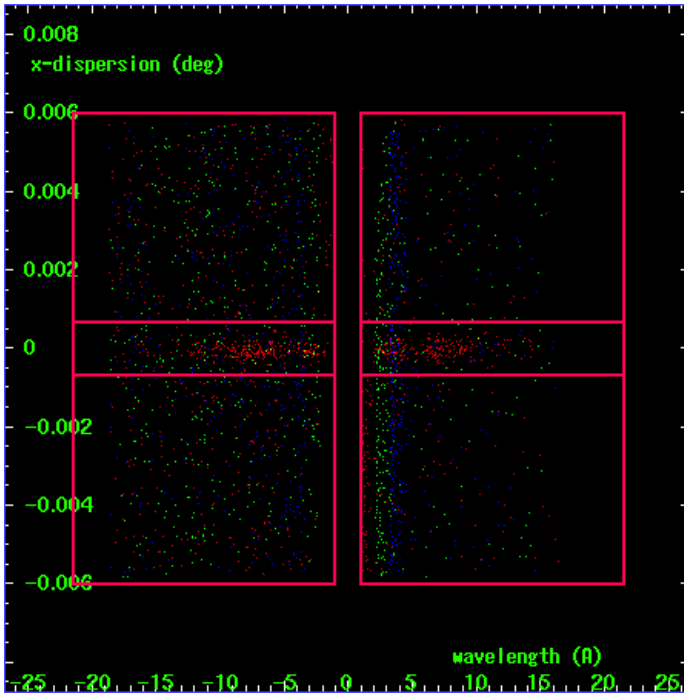
HEG Order Sort 123



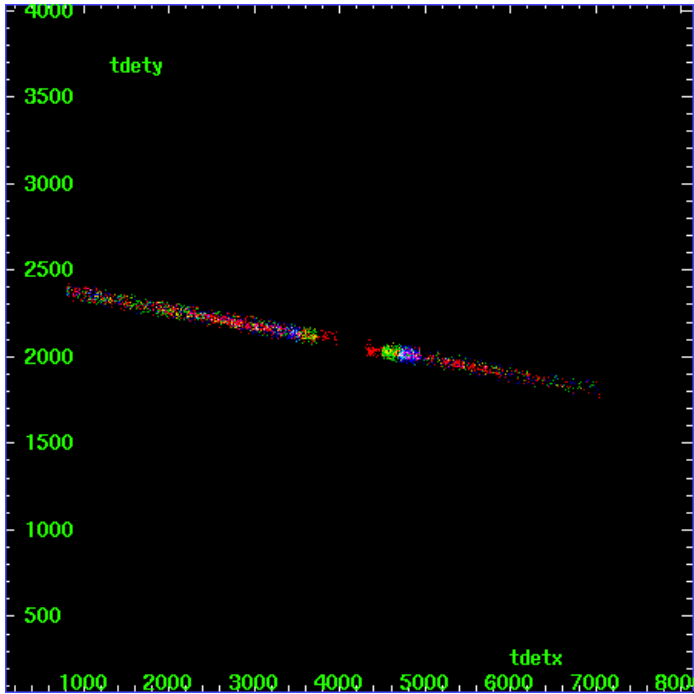
HEG Zero Order



HEG Order Sort ALL

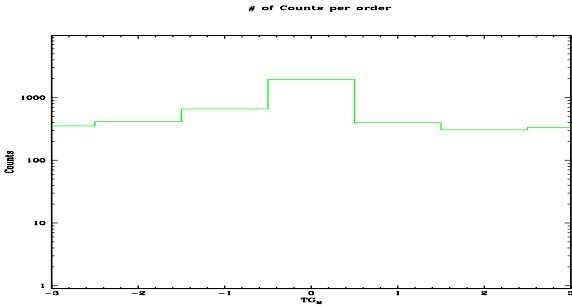


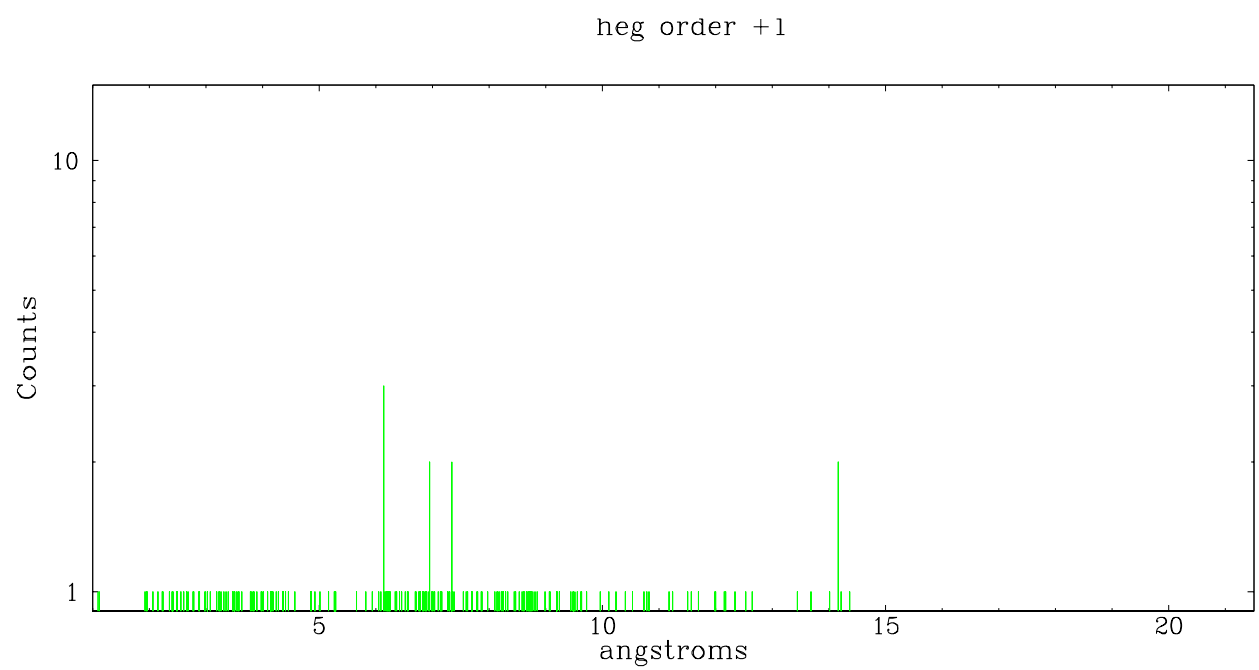
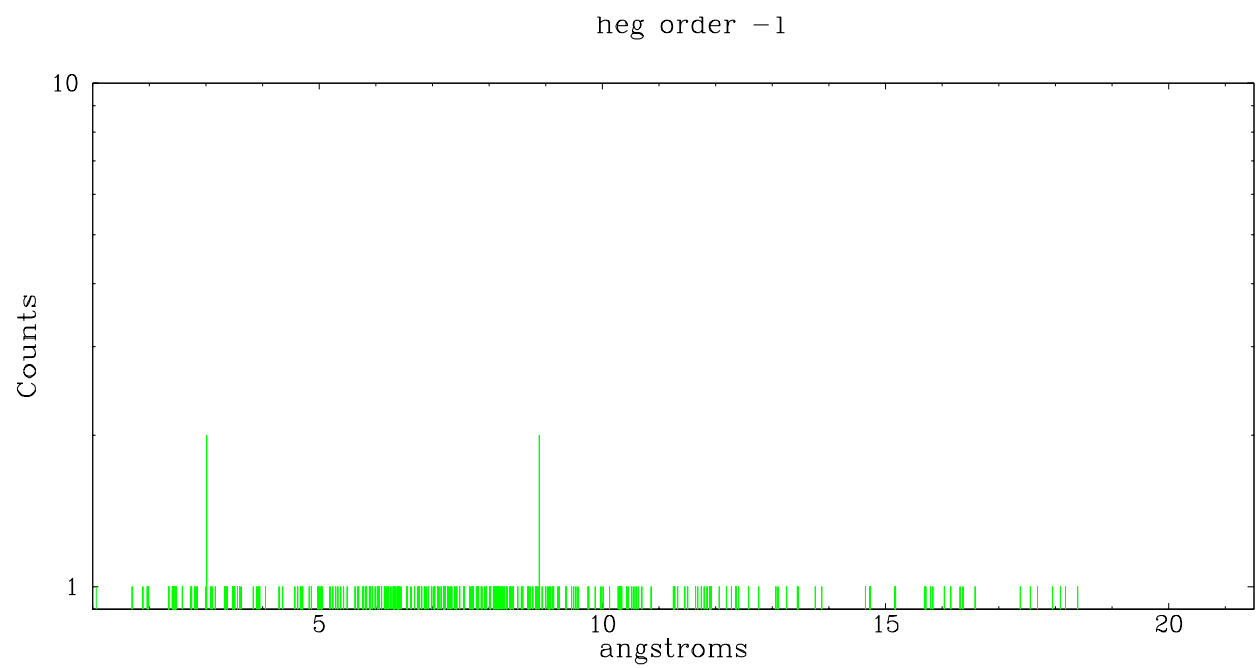
Spot Image HEG



Full Detector HEG

	order -3	order -2	order -1	order 0	order 1	order 2	order 3
Events	353	415	659	1945	398	307	336

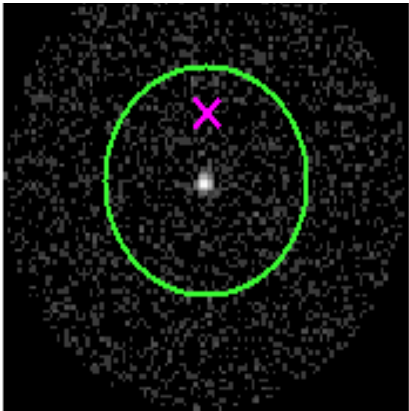




3.2 MEG Arm



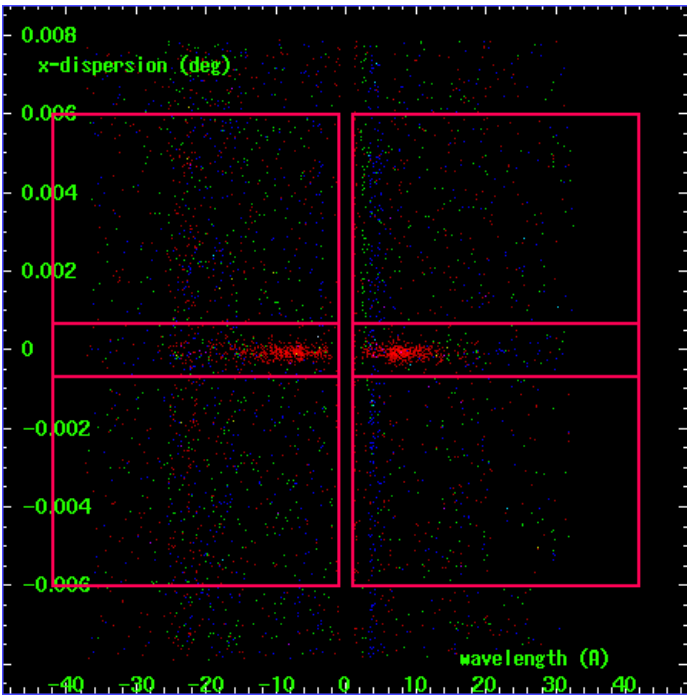
MEG Order Sort 123



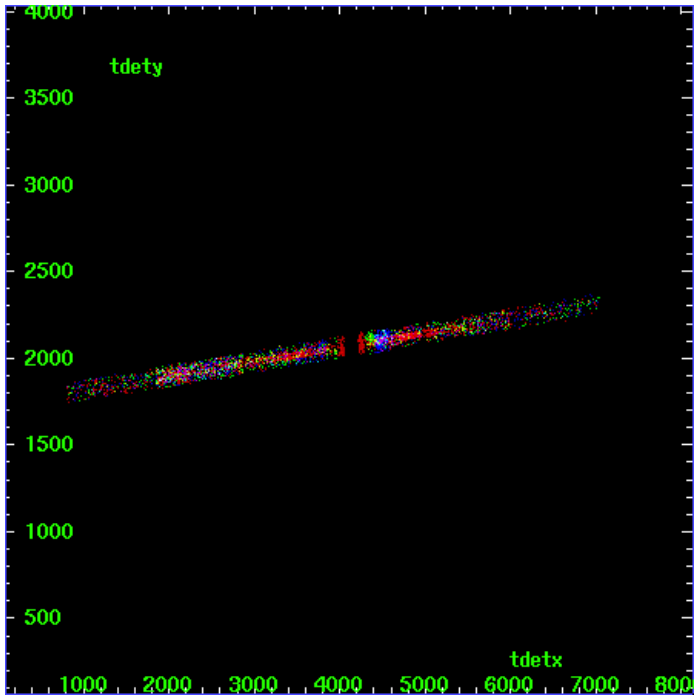
MEG Zero Order



MEG Order Sort ALL

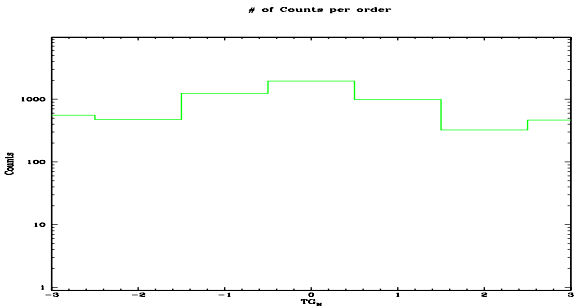


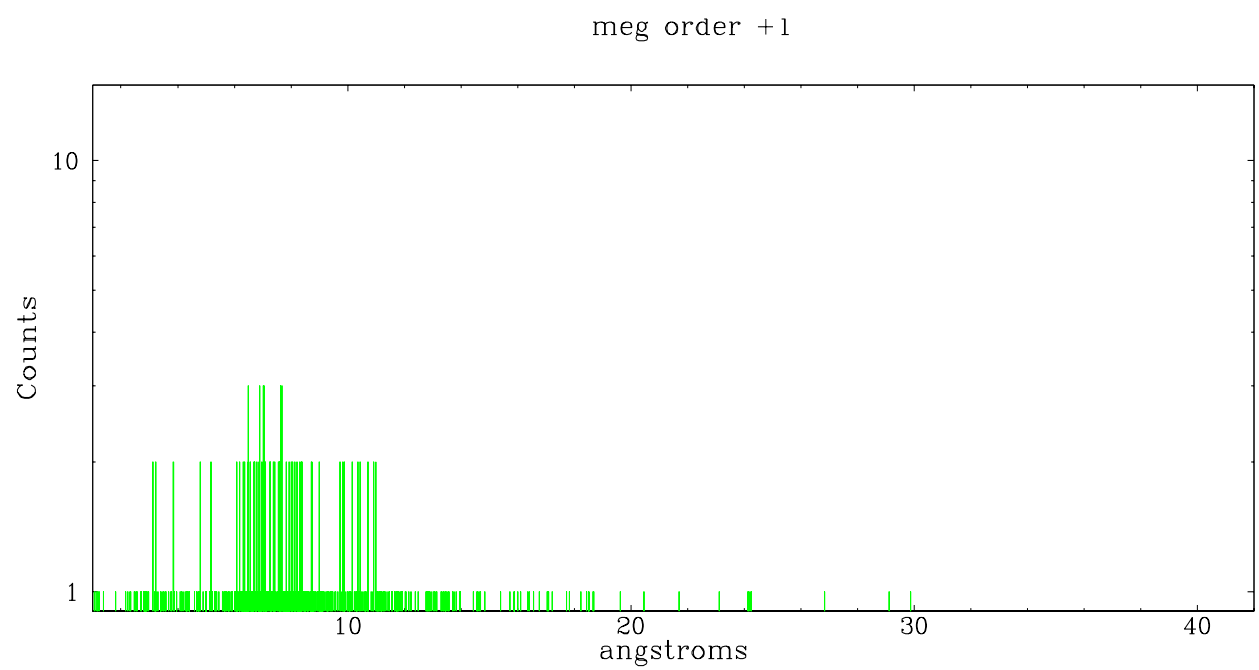
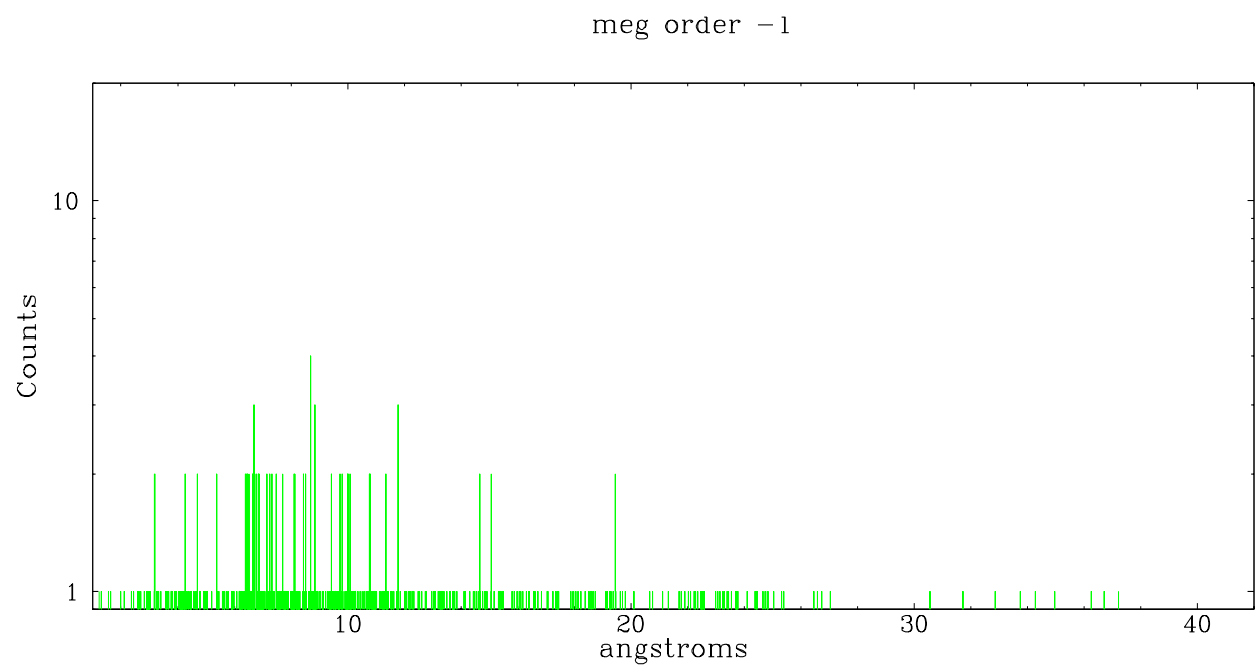
Spot Image MEG



Full Detector MEG

	order -3	order -2	order -1	order 0	order 1	order 2	order 3
Events	556	475	1243	1945	992	324	467





A Summary

A.1 Status

V&V Scientist	Beth Sundheim
V&V Date (YYYY-MM-DD)	2006.10.13
V&V Edition	1
V&V Disposition and Status	OK
V&V Charge Time	88.13

A.2 Comments