

V&V Reference Report

L2 ASCDS Version : 8.4.5

Observation 3720 - L2 Version 4
Chandra X-Ray Center

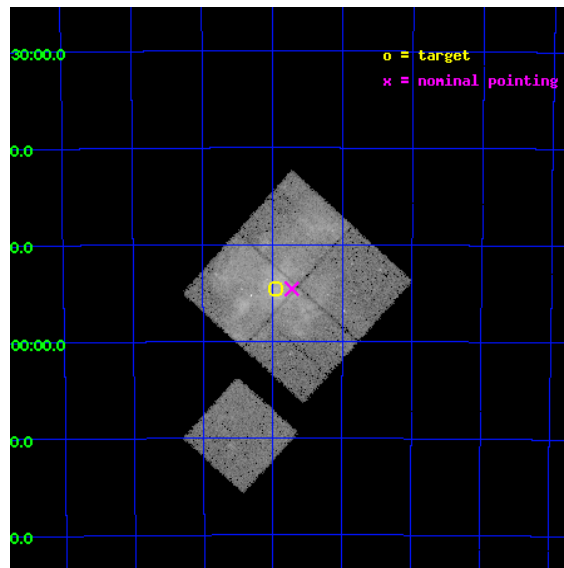
L2 Processing Date : Oct 11 2012

Contents

1	Front	2
2	OBI	3
2.1	OBI	3
2.1.1	Images	3
2.1.2	Bias	3
2.1.3	Parameters	4
2.1.4	Events	4
2.2	Compared Parameters	5
2.3	Aspect	6
2.4	Star Slots	9
2.4.1	Slot 3	9
2.4.2	Slot 4	10
2.4.3	Slot 5	11
2.4.4	Slot 6	12
2.4.5	Slot 7	13
2.5	FID Slots	14
2.5.1	Slot 0	14
2.5.2	Slot 1	15
2.5.3	Slot 2	16
A	Summary	17
A.1	Status	17
A.2	Comments	17

1 Front

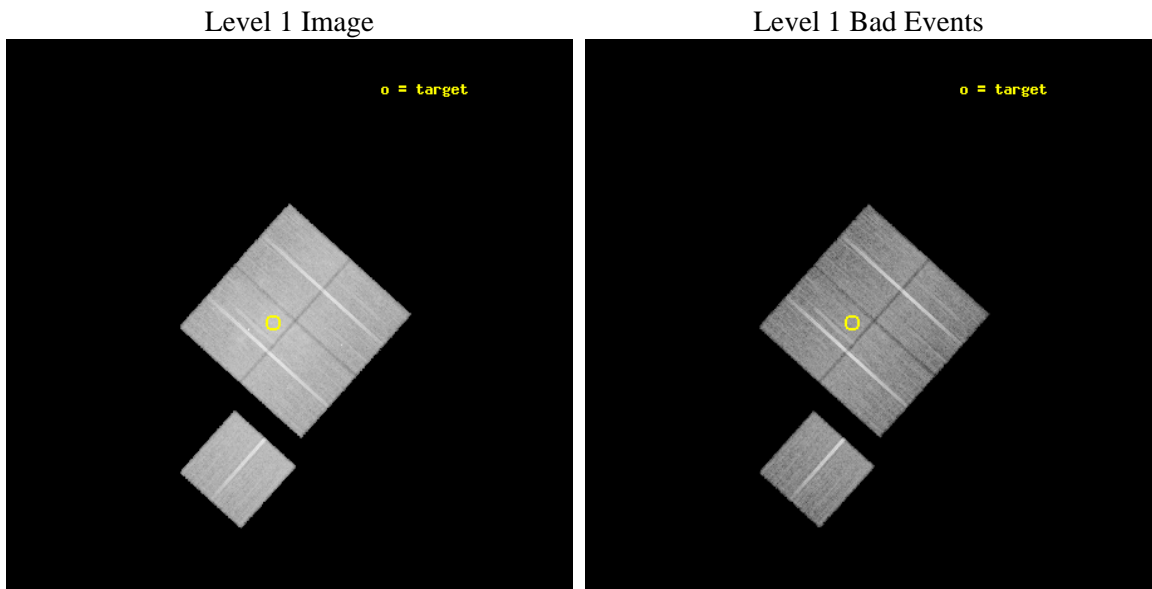
seq_num	500204	Sequence number
obs_id	3720	Observation id
title	AN X-RAY STUDY OF THE CENTER-FILLED SNR MSH11-61A AND ITS NEUTRON STAR CANDIDATE RX J1102.9-6054	Proposal title
observer	Dr. Peter Predehl	Principal investigator
object	MSH 11-61A	Source name
dtcycle	0	
cycle	P	events from which exps? Prim/Second/Both
ra_targ	165.738333	Observer's specified target RA [deg]
dec_targ	-60.909444	Observer's specified target Dec [deg]
ra_nom	165.68087113367	Nominal RA [deg]
dec_nom	-60.909636547606	Nominal Dec [deg]
roll_nom	222.00190119135	Nominal Roll [deg]
revision	4	Processing version of data
ontime	34105.515593886	Sum of GTIs [s]
livetime	33659.901924537	Livetime [s]
ontime0	34117.956225187	Sum of GTIs [s]
ontime1	34111.715344697	Sum of GTIs [s]
ontime2	34111.756344855	Sum of GTIs [s]
ontime3	34105.515593886	Sum of GTIs [s]
ontime6	34117.915185183	Sum of GTIs [s]
l2events	150537	Number of level 2 events



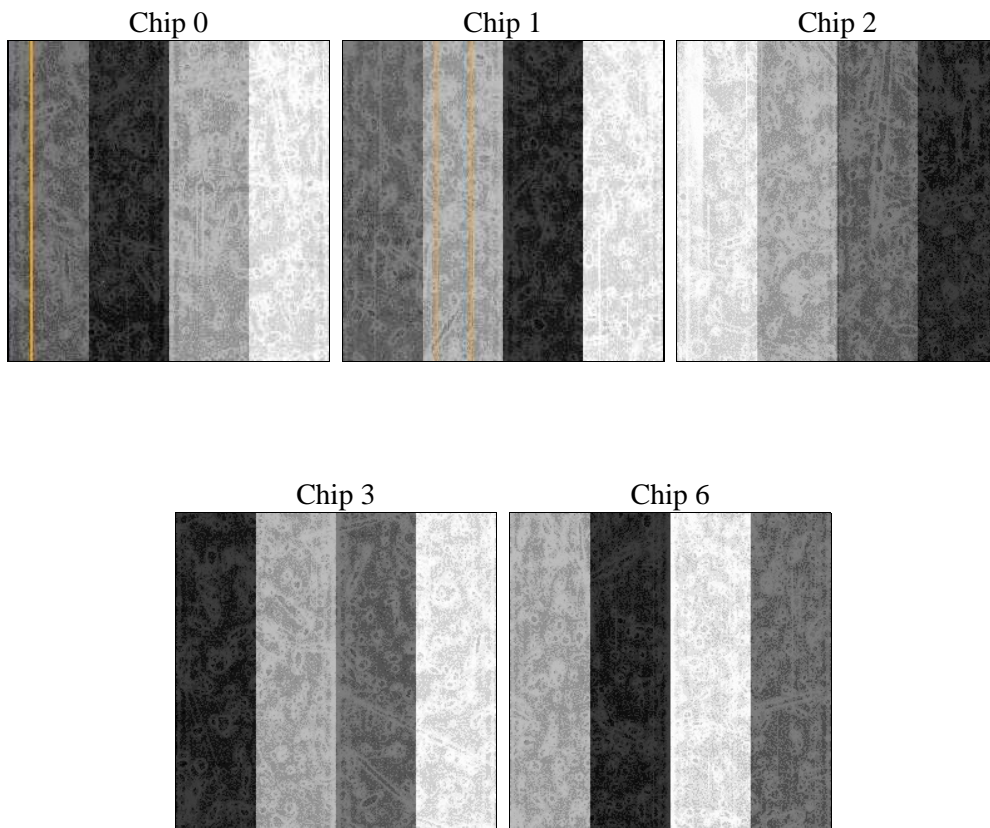
2 OBI

2.1 OBI

2.1.1 Images



2.1.2 Bias



2.1.3 Parameters

obi_num	1	Obi number	sched_exp_time	34000.000000	[s] Scheduled observation exposure time
ascdsver	8.4.5	Processing system revision	ontime	34105.515593886	Sum of GTIs [s]
caldbver	4.5.2	 	ontime0	34117.956225187	Sum of GTIs [s]
date	2012-10-11T16:38:34	Date and time of file creation	ontime1	34111.715344697	Sum of GTIs [s]
revision	4	Processing version of data	ontime2	34111.756344855	Sum of GTIs [s]
			ontime3	34105.515593886	Sum of GTIs [s]
			ontime6	34117.915185183	Sum of GTIs [s]
			l1events	1011654	Number of level 1 events

2.1.4 Events

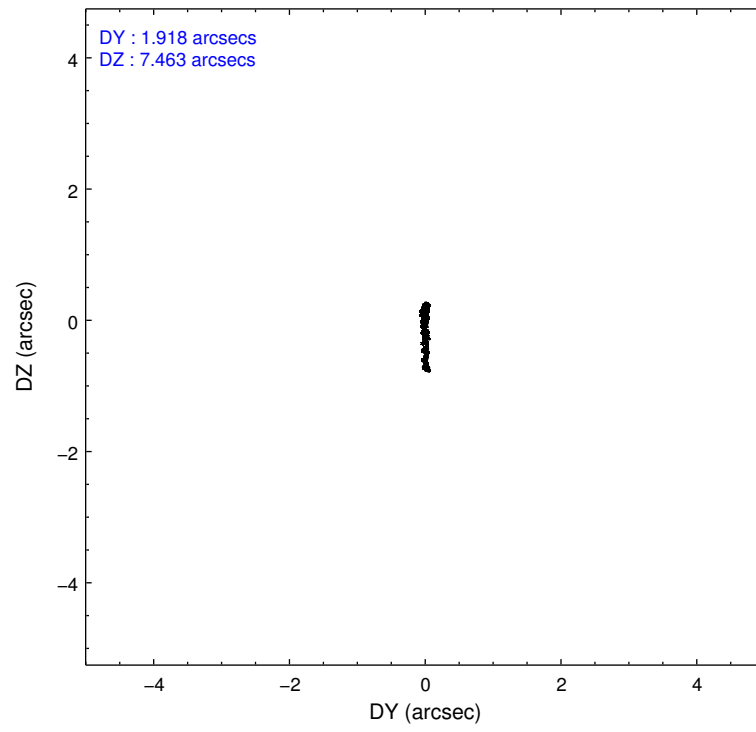
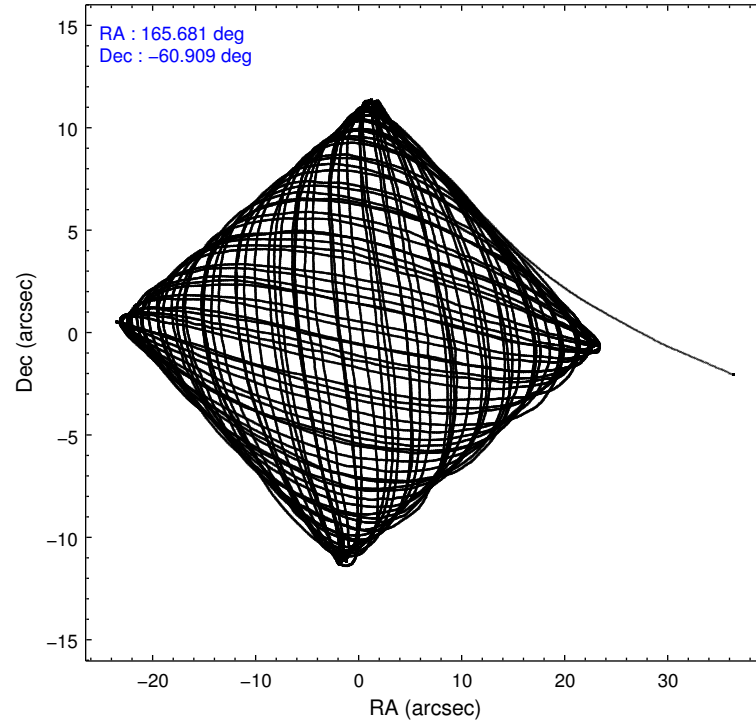
	ccd 0	ccd 1	ccd 2	ccd 3	ccd 6
level 1 events	184327	195974	210270	226990	194093
rejected events	158806	157188	180708	175136	173061
rejected %	86%	80%	85%	77%	89%

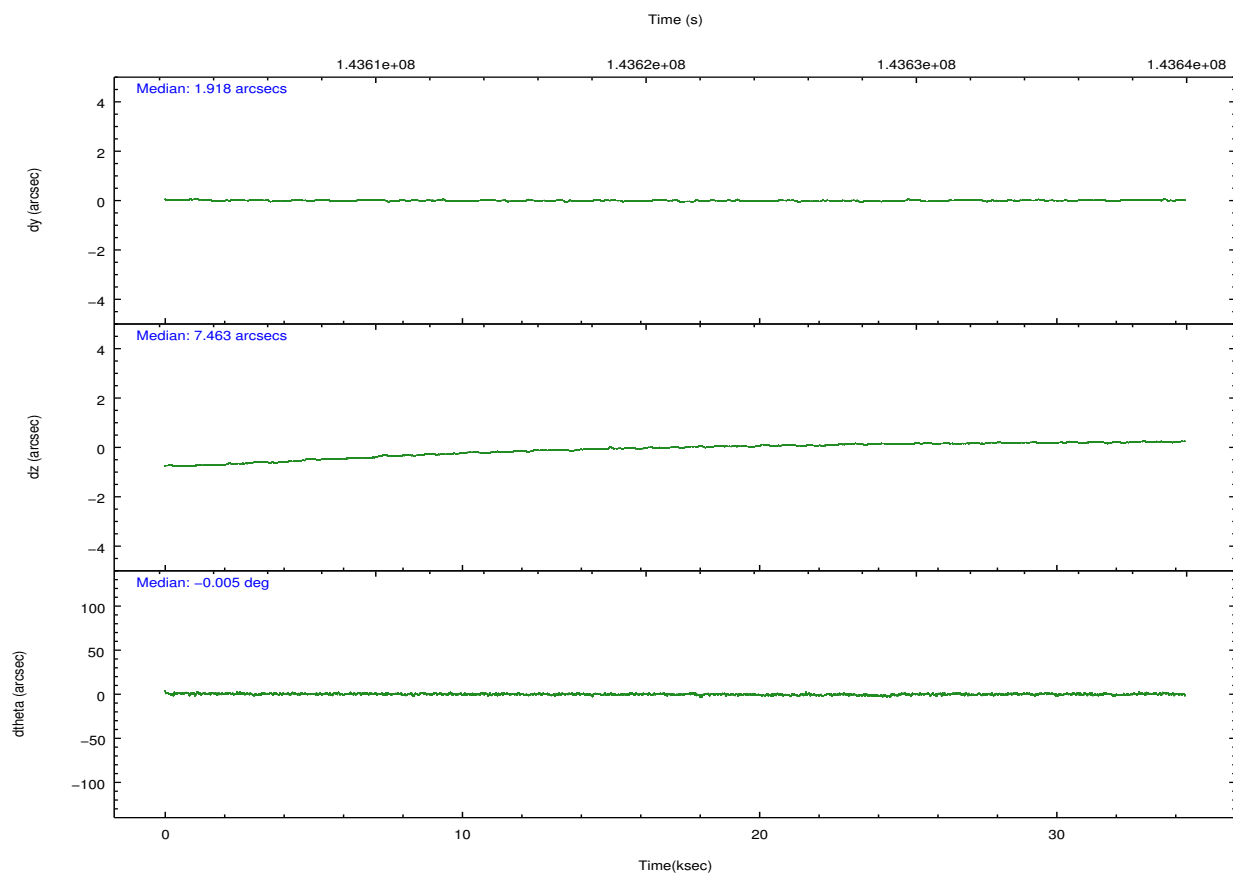
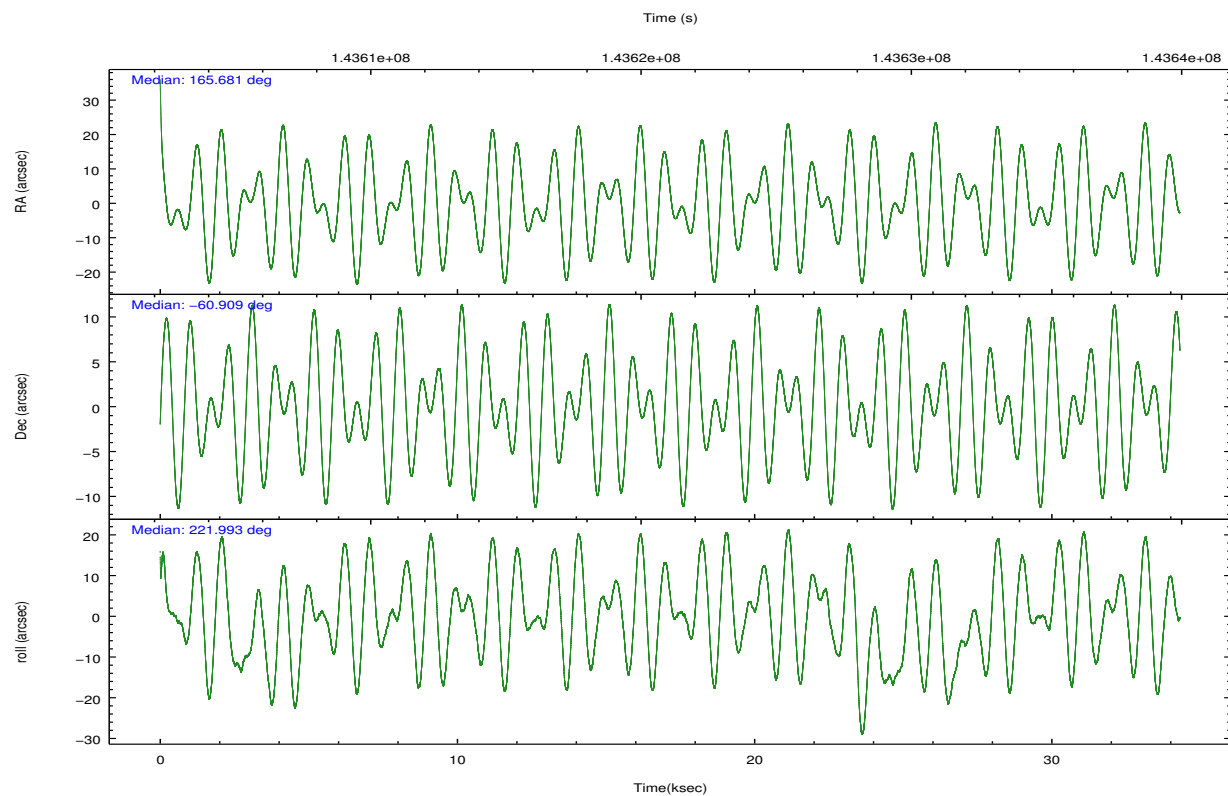
	ccd 0	ccd 1	ccd 2	ccd 3	ccd 6
grade 0 events	12950	23161	16951	35598	8530
	7%	11%	8%	15%	4%
grade 1 events	98	136	104	183	66
	0%	0%	0%	0%	0%
grade 2 events	4554	6001	4786	6809	4059
	2%	3%	2%	2%	2%
grade 3 events	2197	2561	2045	2663	2097
	1%	1%	0%	1%	1%
grade 4 events	1932	2620	2050	2671	2055
	1%	1%	0%	1%	1%
grade 5 events	6303	6657	5935	6807	7004
	3%	3%	2%	2%	3%
grade 6 events	3890	4451	3733	4123	4295
	2%	2%	1%	1%	2%
grade 7 events	152403	150387	174666	168136	165987
	82%	76%	83%	74%	85%

2.2 Compared Parameters

Parameter	Planned	Actual	Parameter	Planned	Actual
Instrument	ACIS	ACIS	Obspar format version number	7	7
Detector	ACIS-01236	ACIS-01236	Obspar file type	PREDICTED	ACTUAL
Grating	NONE	NONE	Obspar update status	NONE	UPDATED
Data mode	VFAINT	VFAINT	Number of optional ACIS chips dropped	0	0
Observation mode	POINTING	POINTING	On-chip summing requested	N	N
[deg] Pointing RA	165.698083	165.6808711336712	Subarray requested	NONE	NONE
[deg] Pointing Dec	-60.883574	-60.90963654760556	Alternating exposures requested	N	N
[deg] Pointing Roll	221.808257	222.0019011913517	[s] Primary exposure time	0.000000	3.1
[mm] SIM focus pos	-0.782348	-0.7809083437167272			
[mm] SIM defocus	0	0.001439871863259334			
[mm] SIM translation stage pos	-233.592463	-233.5874344608287			
[mm] SIM translation stage offset	0	-0.005018542100998502			
[s] Observation start time (MET)	143604230.184000	143603201.70517			
Observation start date	2002-07-21T02:02:46	2002-07-21T01:46:41			
[s] Observation end time (MET)	143638230.184000	143638944.48164			
Observation end date	2002-07-21T11:29:26	2002-07-21T11:42:24			
Read mode	TIMED	TIMED			

2.3 Aspect



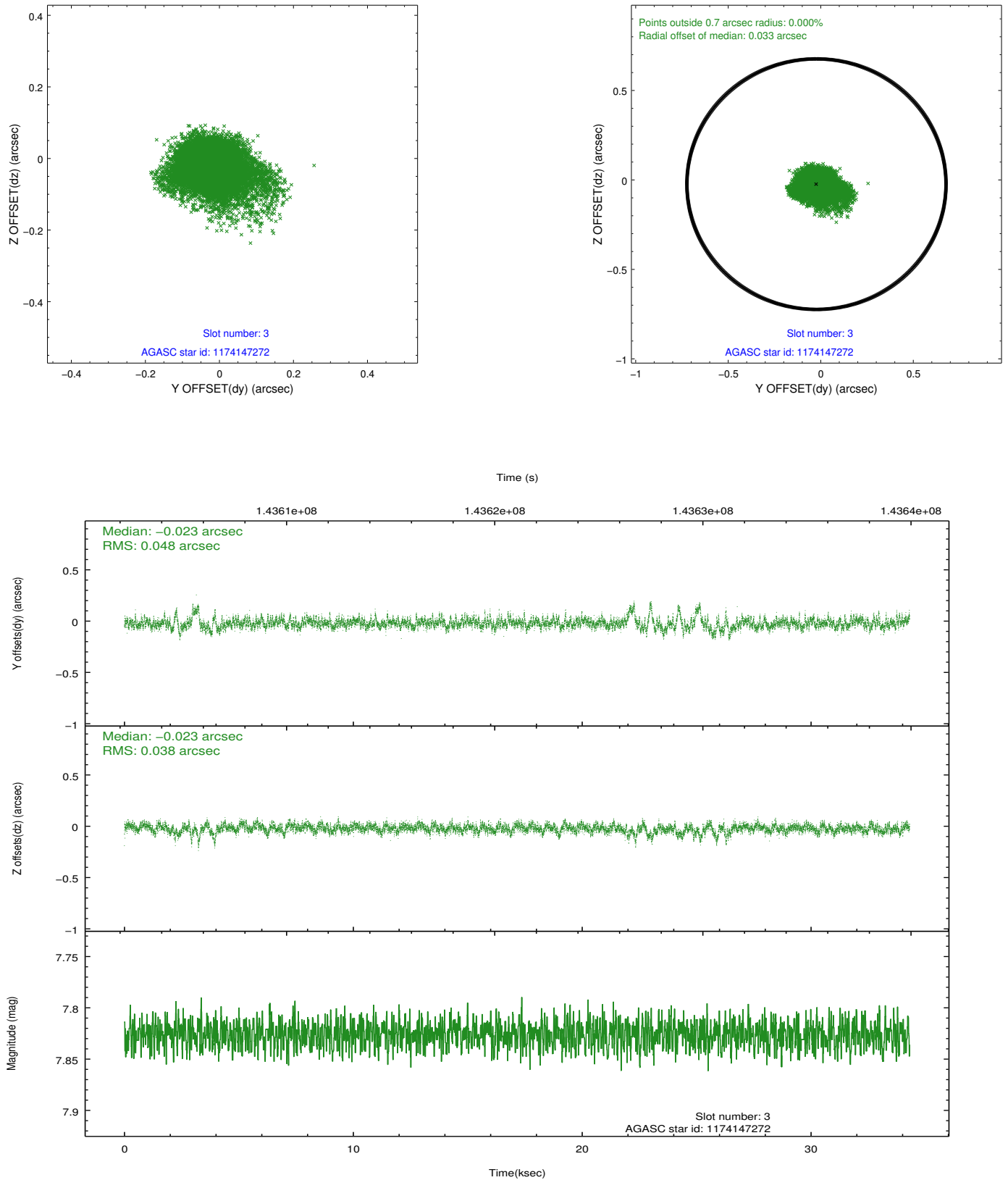


Slot Statistics

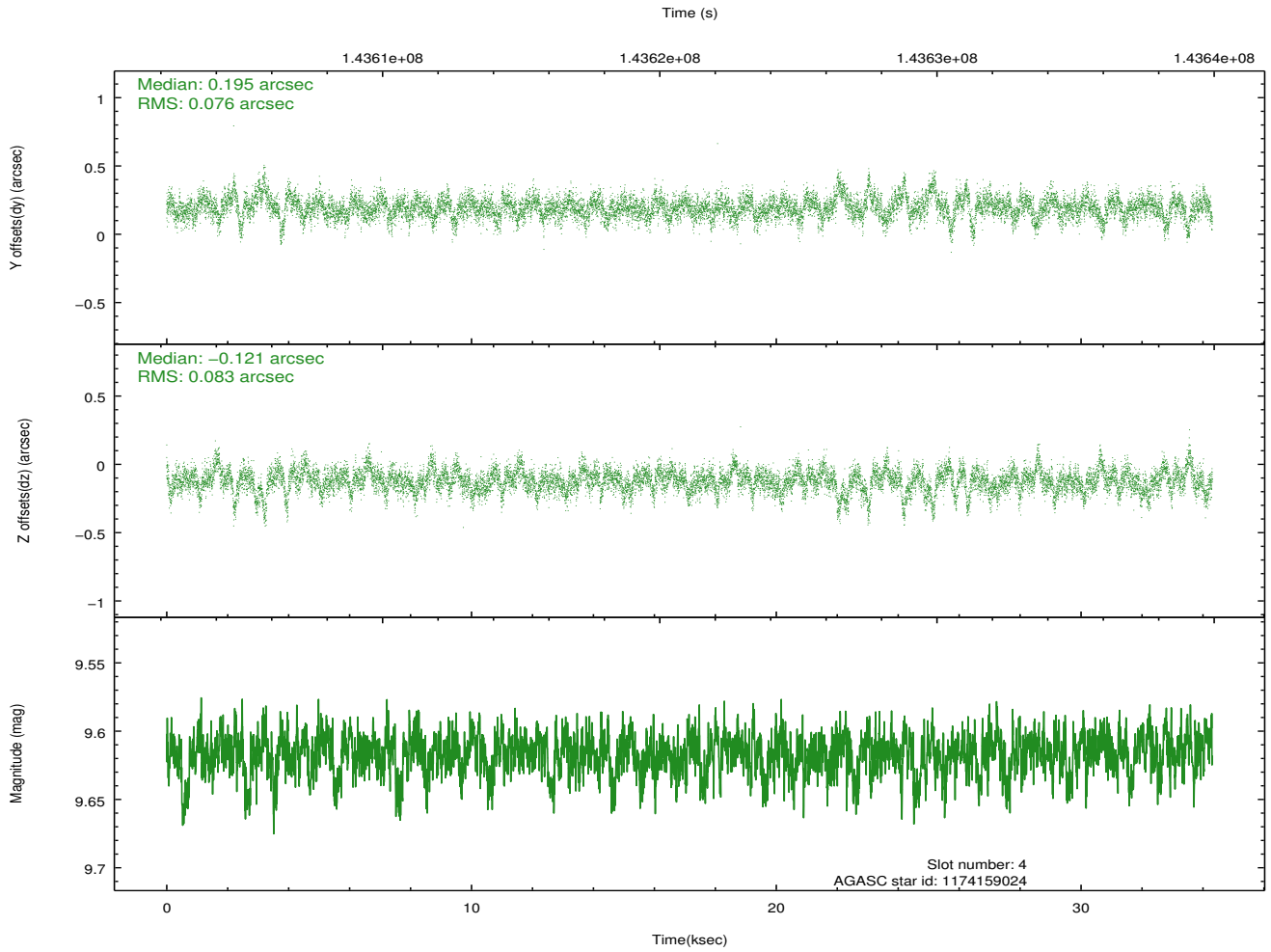
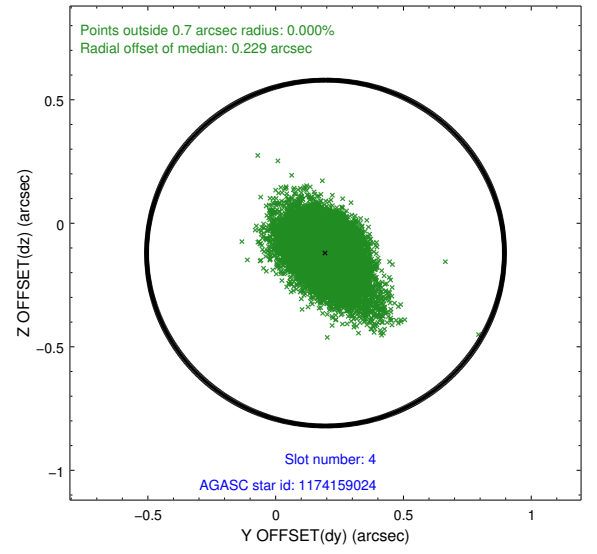
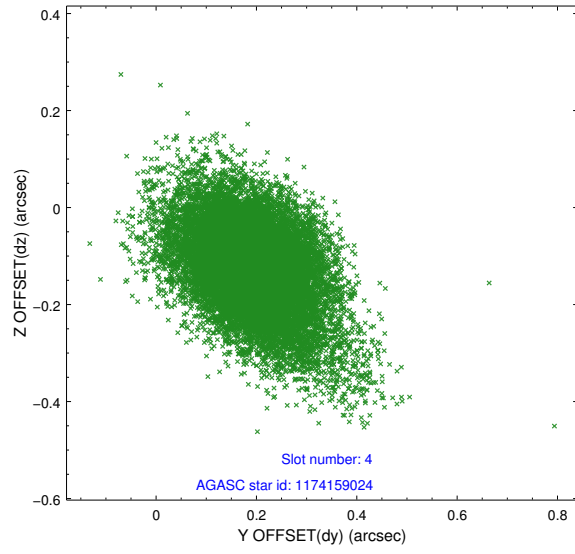
slot	status	id	mag	n_pts	med_dy	med_dz	dr1	dr2	ra	dec	mean_y	mean_z
0	FID	ACIS-I-2	6.95	8369	-0.093	0.003	0.010	0.017	0.000000	0.000000	-756.32	-837.16
1	FID	ACIS-I-4	6.97	8369	-0.003	0.085	0.011	0.019	0.000000	0.000000	2157.72	1069.20
2	FID	ACIS-I-6	7.01	8370	-0.004	-0.025	0.016	0.031	0.000000	0.000000	403.79	1711.25
3	GUIDE	1174147272	7.83	16738	-0.023	-0.023	0.059	0.114	165.413771	-61.562087	1992.88	1497.42
4	GUIDE	1174159024	9.62	16731	0.195	-0.121	0.113	0.205	164.290062	-60.845452	1768.05	-1727.91
5	GUIDE	1174174408	9.31	16725	0.065	0.004	0.109	0.176	164.349657	-61.053158	2175.33	-1092.35
6	GUIDE	1174178136	7.85	16736	-0.055	-0.104	0.066	0.134	165.224552	-60.325480	-707.16	-2057.70
7	GUIDE	1174275336	9.03	16694	-0.175	0.230	0.121	0.453	167.513573	-60.930682	-2224.28	2276.21

2.4 Star Slots

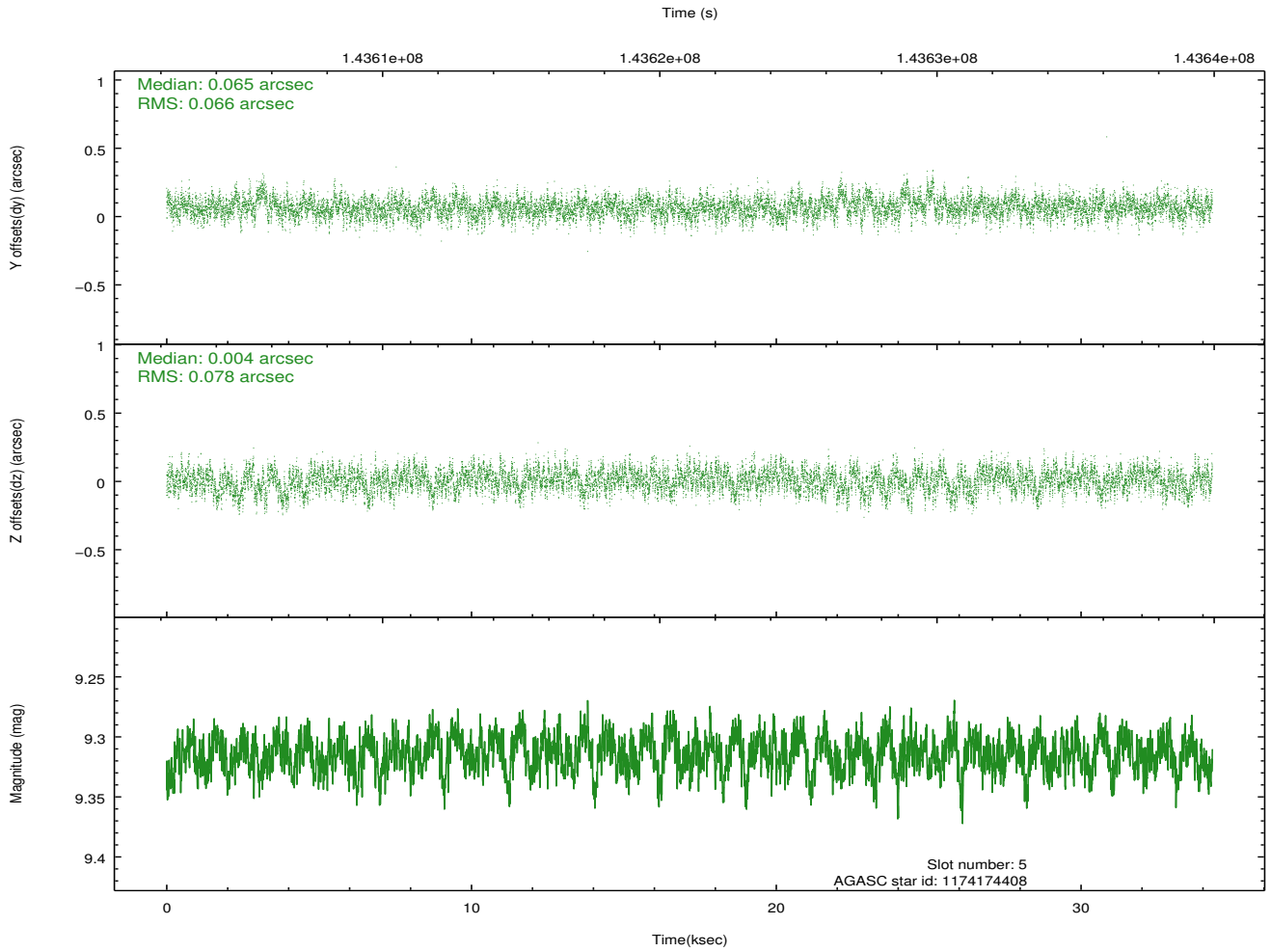
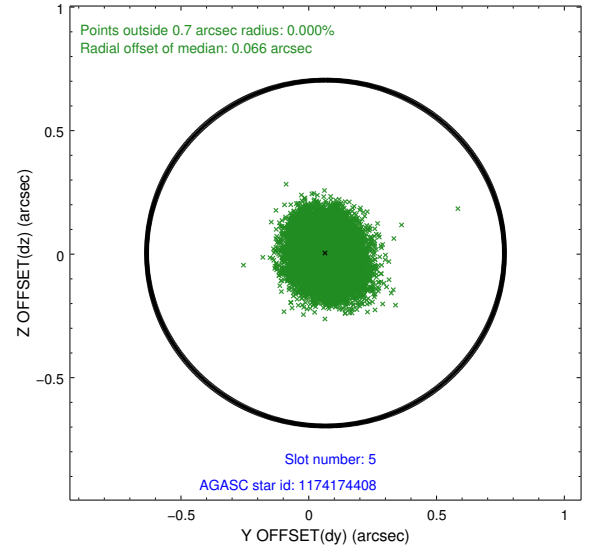
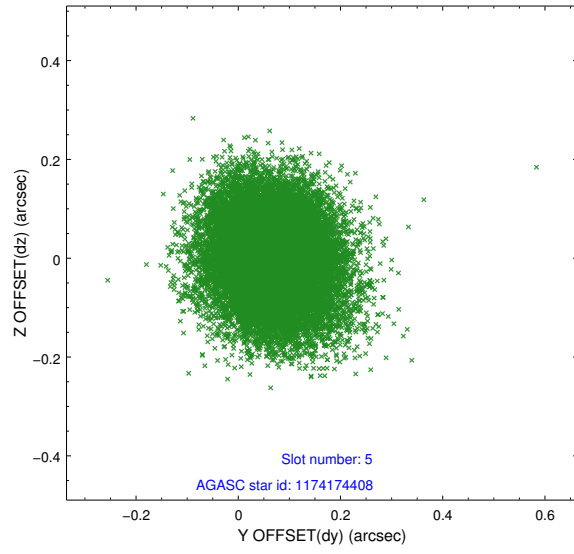
2.4.1 Slot 3



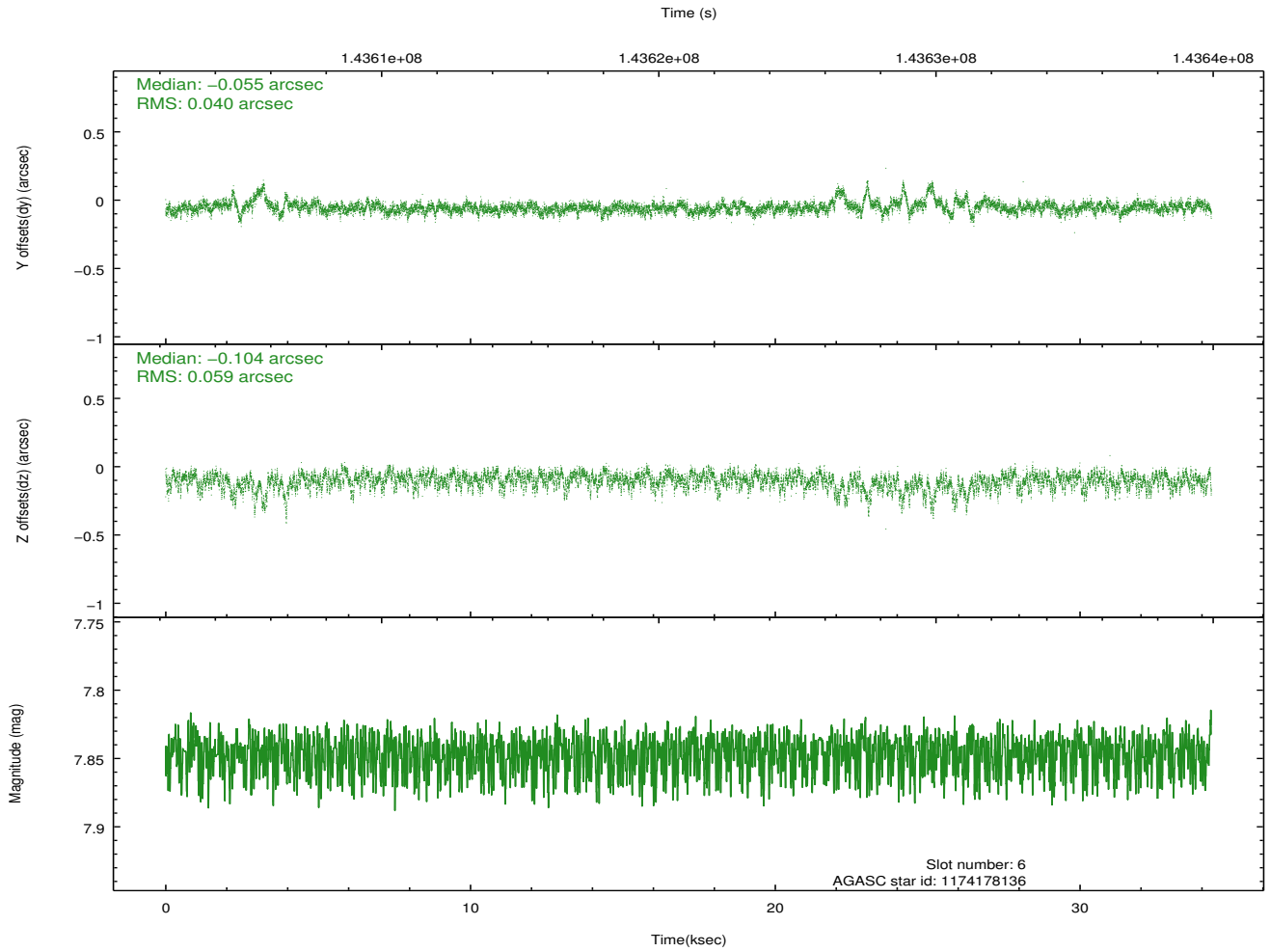
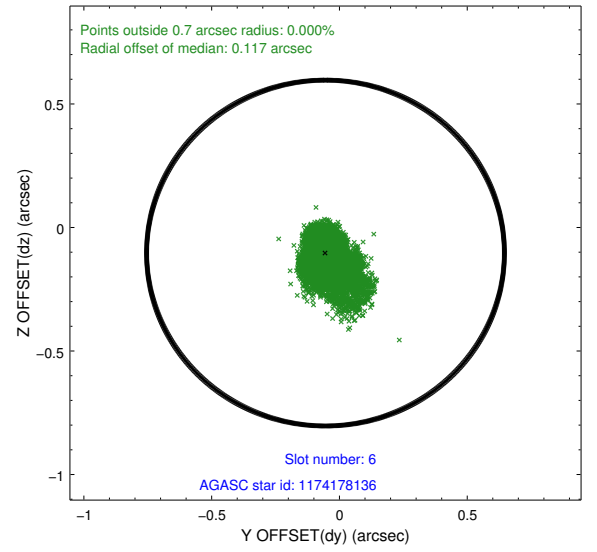
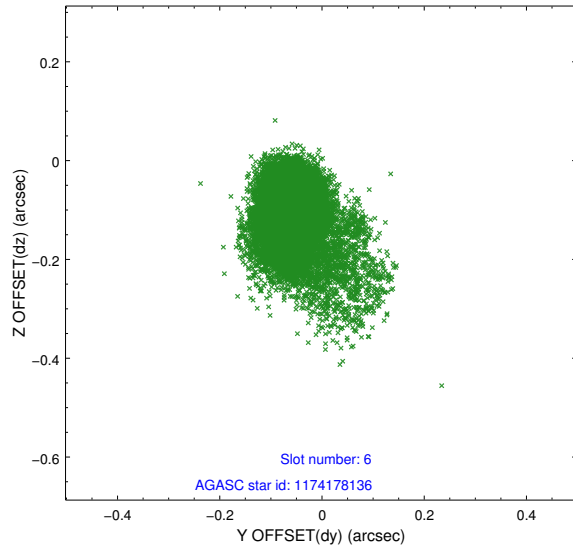
2.4.2 Slot 4



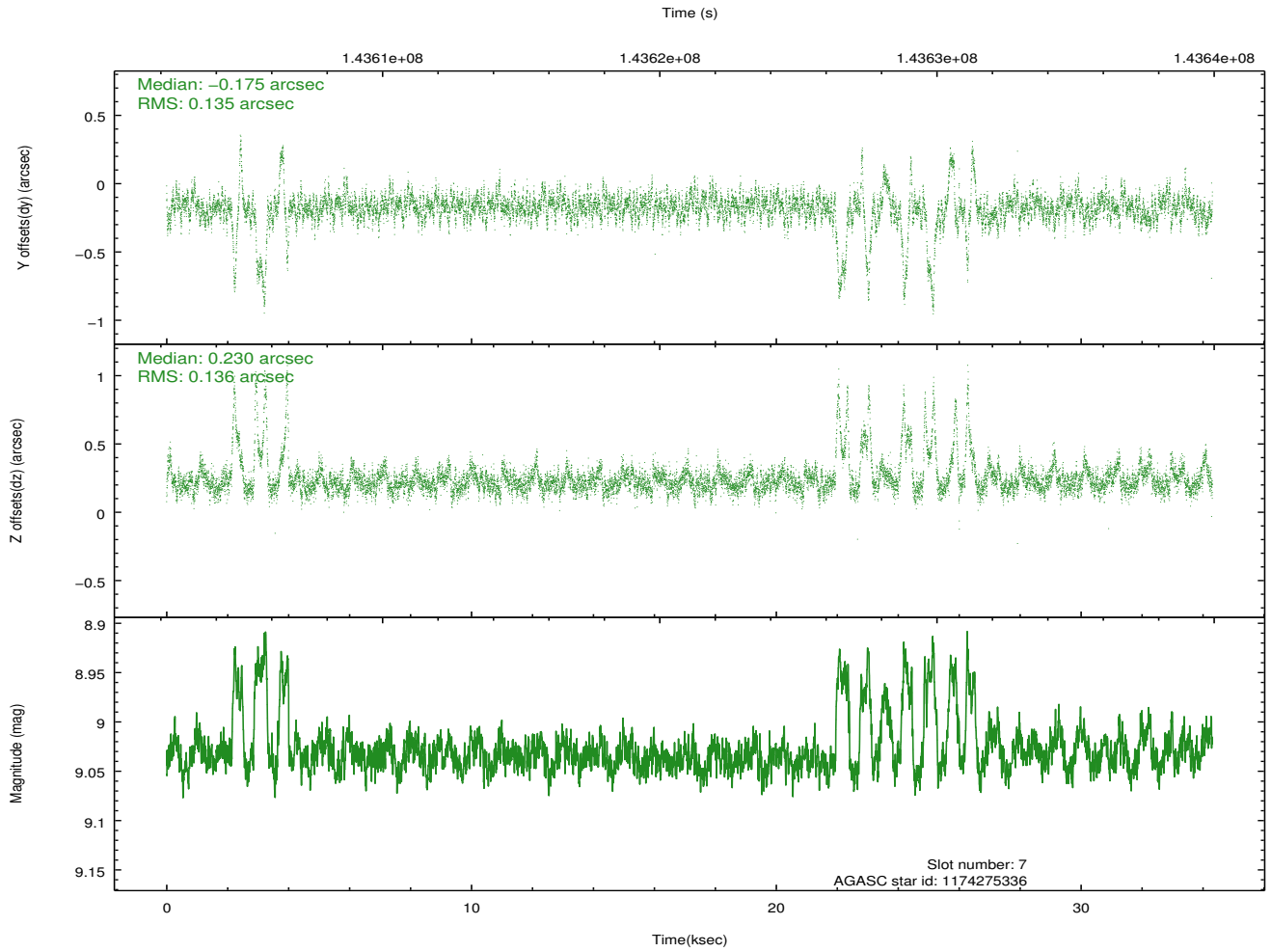
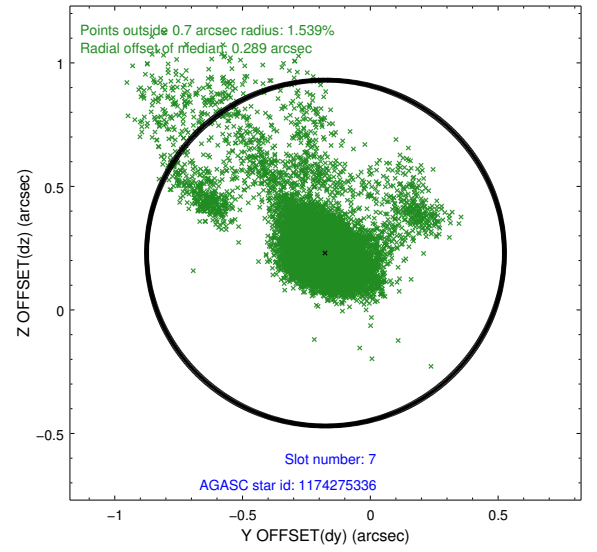
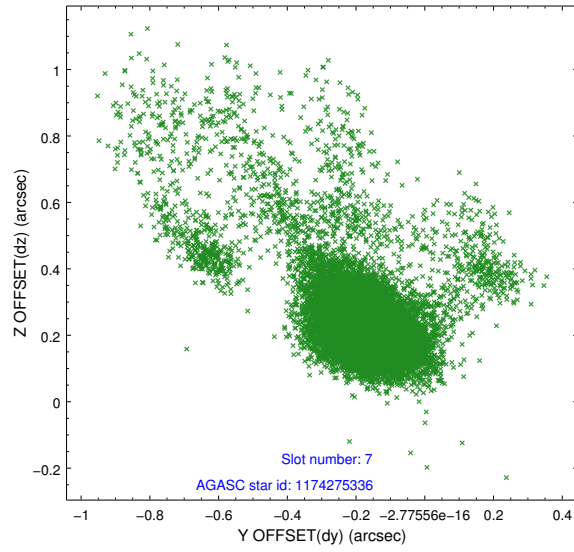
2.4.3 Slot 5



2.4.4 Slot 6

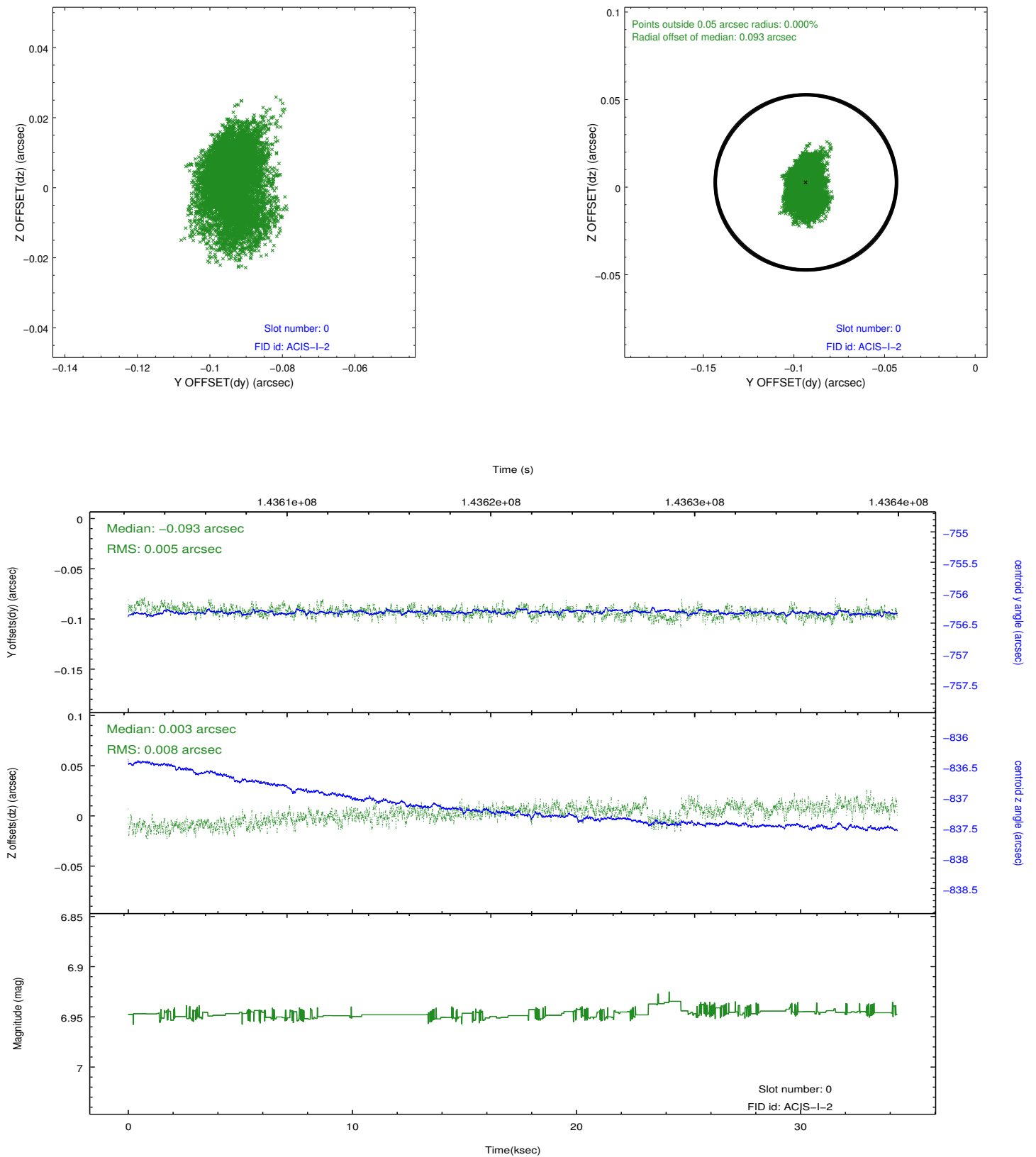


2.4.5 Slot 7

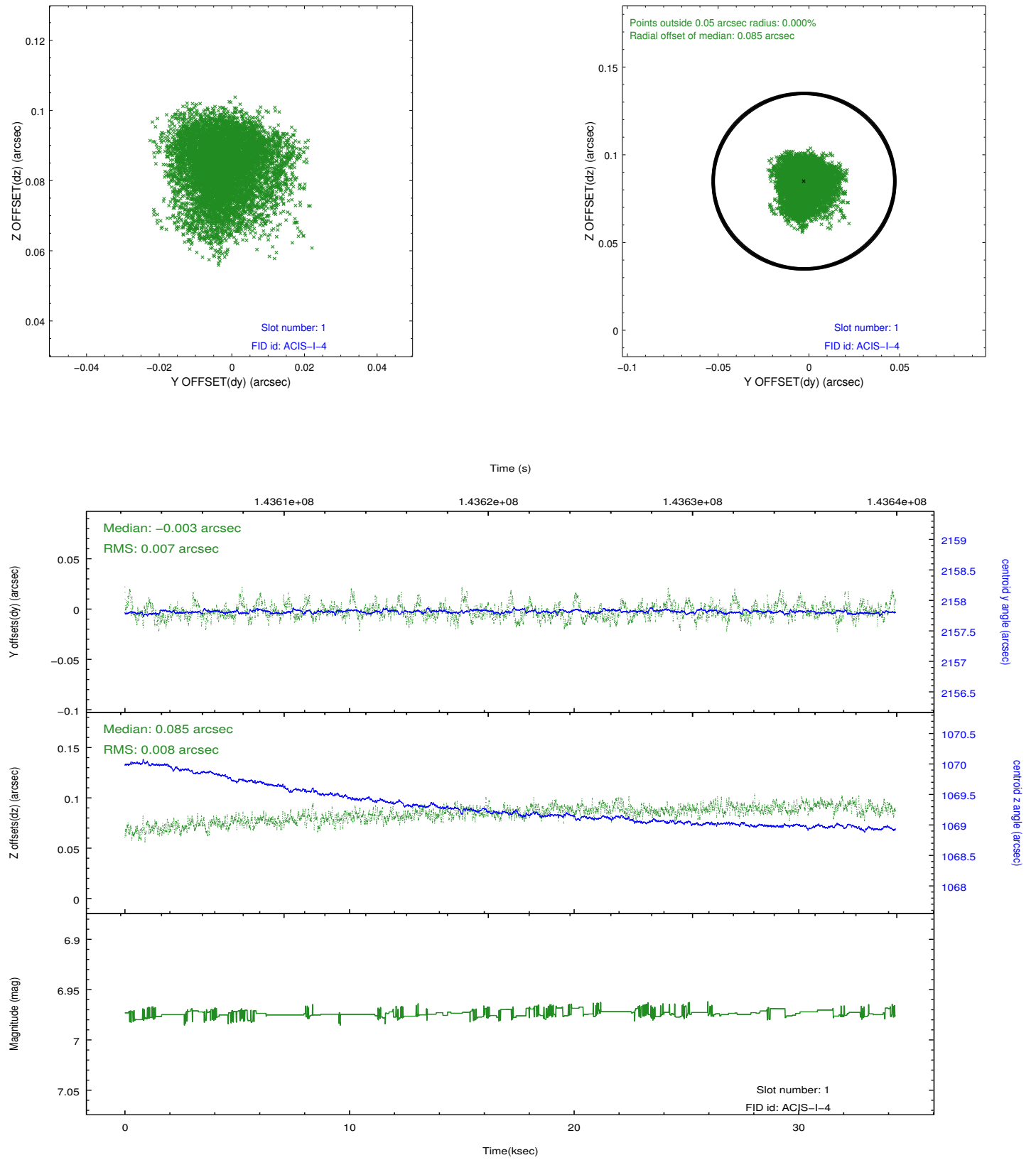


2.5 FID Slots

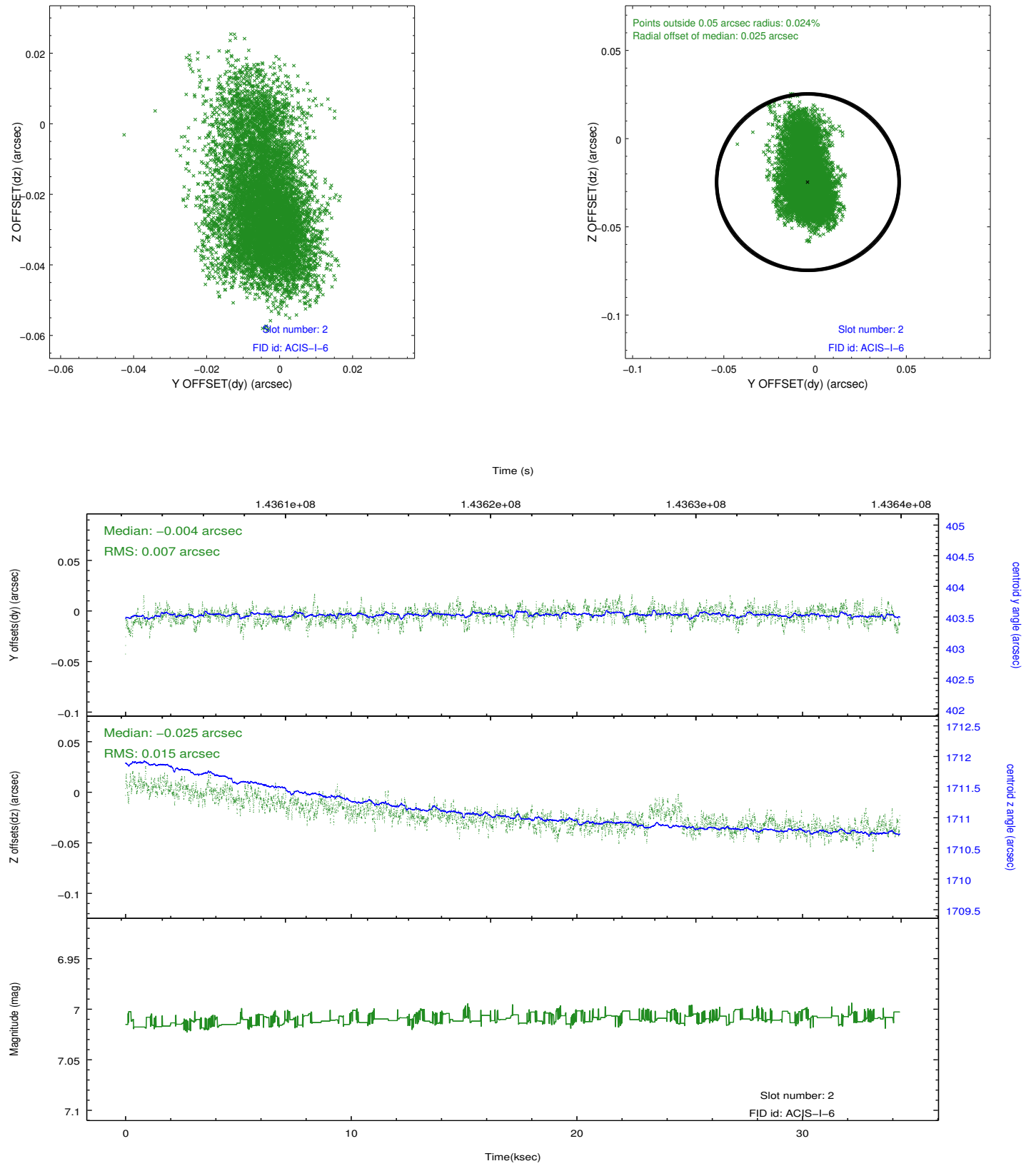
2.5.1 Slot 0



2.5.2 Slot 1



2.5.3 Slot 2



A Summary

A.1 Status

V&V Scientist	Beth Sundheim
V&V Date (YYYY-MM-DD)	2012.10.21
V&V Edition	1
V&V Disposition and Status	OK
V&V Charge Time	34.106

A.2 Comments