

V&V Reference Report

L2 ASCDS Version : 7.6.10

Observation 2808 - L2 Version 001
Chandra X-Ray Center

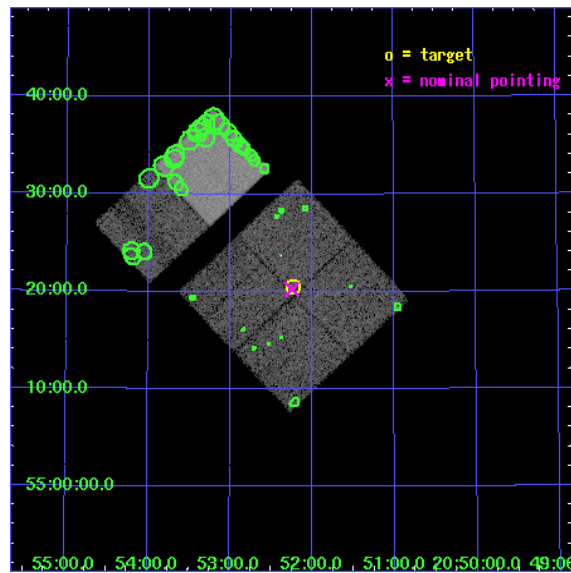
L2 Processing Date : Jan 18 2007

Contents

1	Front	2
2	OBI	3
2.1	OBI	3
2.1.1	Images	3
2.1.2	Bias	3
2.1.3	Parameters	4
2.1.4	Events	4
2.2	Compared Parameters	5
2.3	Aspect	6
2.4	Star Slots	9
2.4.1	Slot 3	9
2.4.2	Slot 4	10
2.4.3	Slot 5	11
2.4.4	Slot 6	12
2.4.5	Slot 7	13
2.5	FID Slots	14
2.5.1	Slot 0	14
2.5.2	Slot 1	15
2.5.3	Slot 2	16
3	Point Sources	17
A	Summary	18
A.1	Status	18
A.2	Comments	18

1 Front

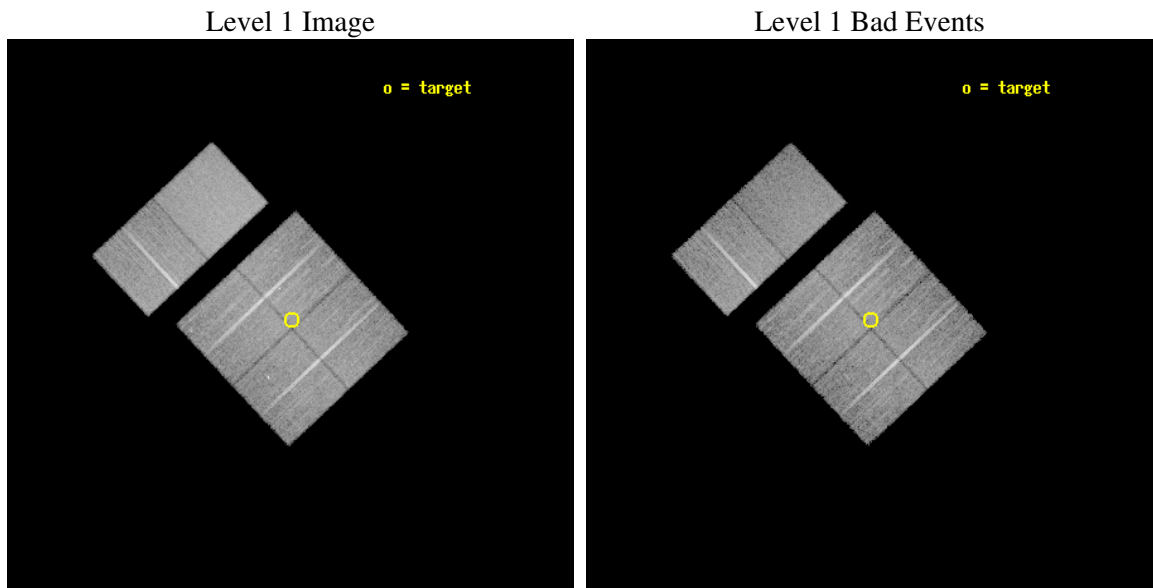
seq_num	500258
obs_id	2808
title	A CHANDRA SURVEY FOR COMPACT OBJECTS IN SUPERNOVA REMNANTS
observer	Prof. Shrinivas Kulkarni
object	G093.3+6.9
dtcycle	0
cycle	P
ra_targ	313.058333
dec_targ	55.341667
ra_nom	313.06168796133
dec_nom	55.337370597087
roll_nom	316.90205203243
revision	2
ontime	16630.400015488
livetime	16419.815876867
ontime0	16630.400015488
ontime1	16630.400015488
ontime2	16630.400015488
ontime3	16630.400015488
ontime6	16629.49390696
ontime7	16629.534946963
l2events	122678



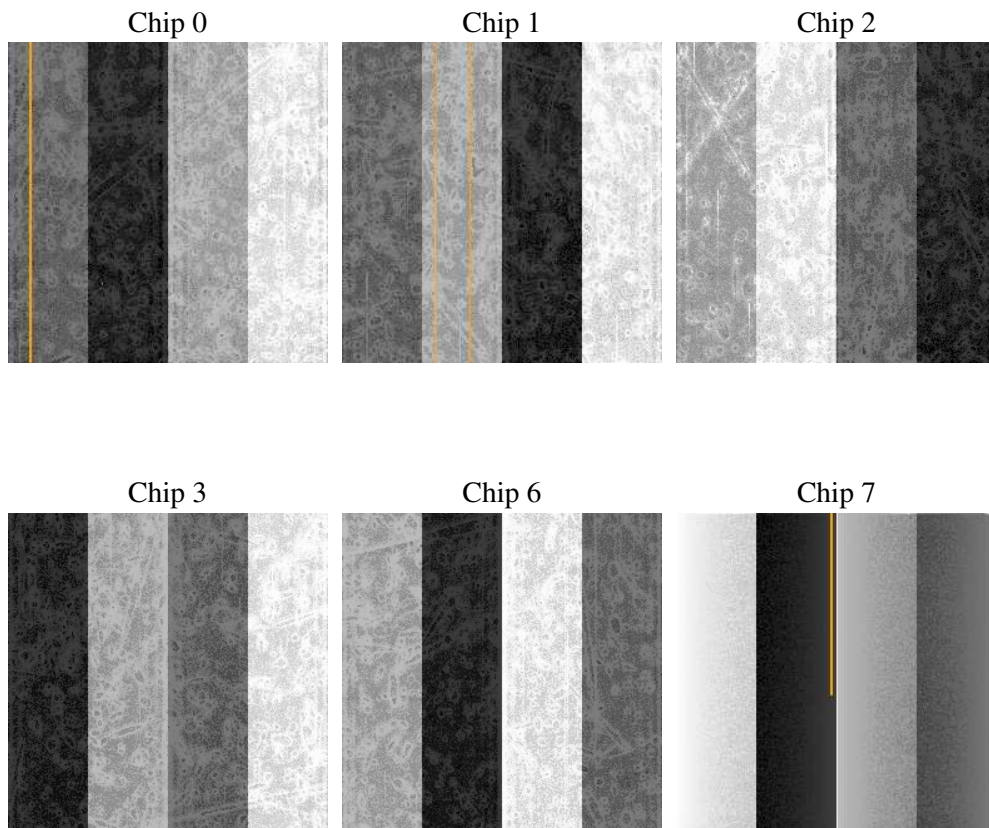
2 OBI

2.1 OBI

2.1.1 Images



2.1.2 Bias



2.1.3 Parameters

obi_num	0
ascdsver	7.6.10
caldsver	3.3.0
date	2007-01-18T05:16:34
revision	2

sched_exp_time	16875.020000
ontime	16630.400015488
ontime0	16630.400015488
ontime1	16630.400015488
ontime2	16630.400015488
ontime3	16630.400015488
ontime6	16629.49390696
ontime7	16629.534946963
l1events	680126

2.1.4 Events

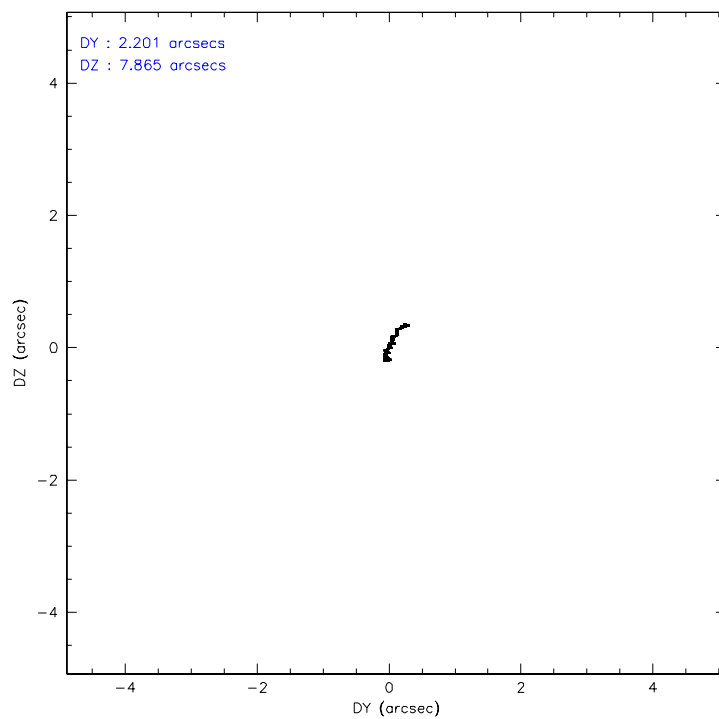
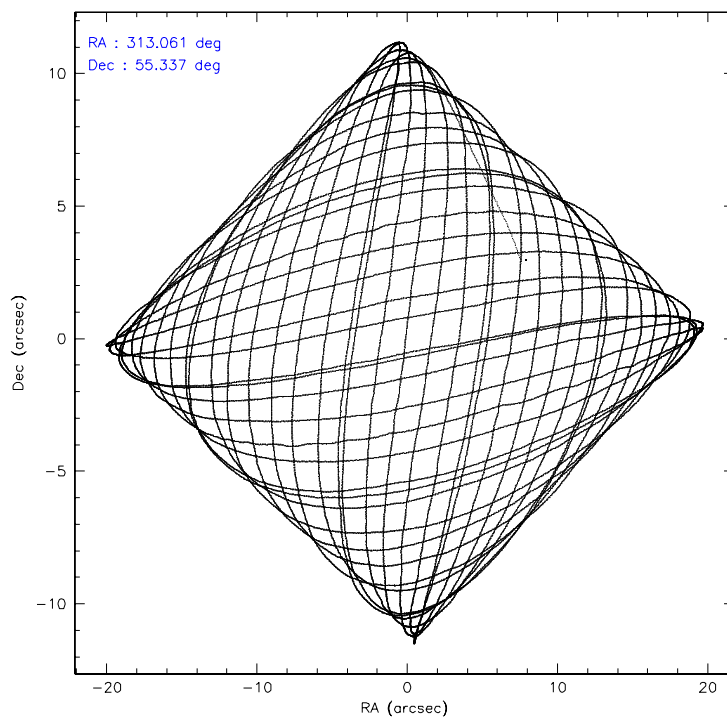
	ccd 0	ccd 1	ccd 2	ccd 3	ccd 6	ccd 7
level 1 events	101950	102010	111086	110749	114729	139602
rejected events	86263	86620	95930	95662	100069	80860
rejected %	84%	84%	86%	86%	87%	57%

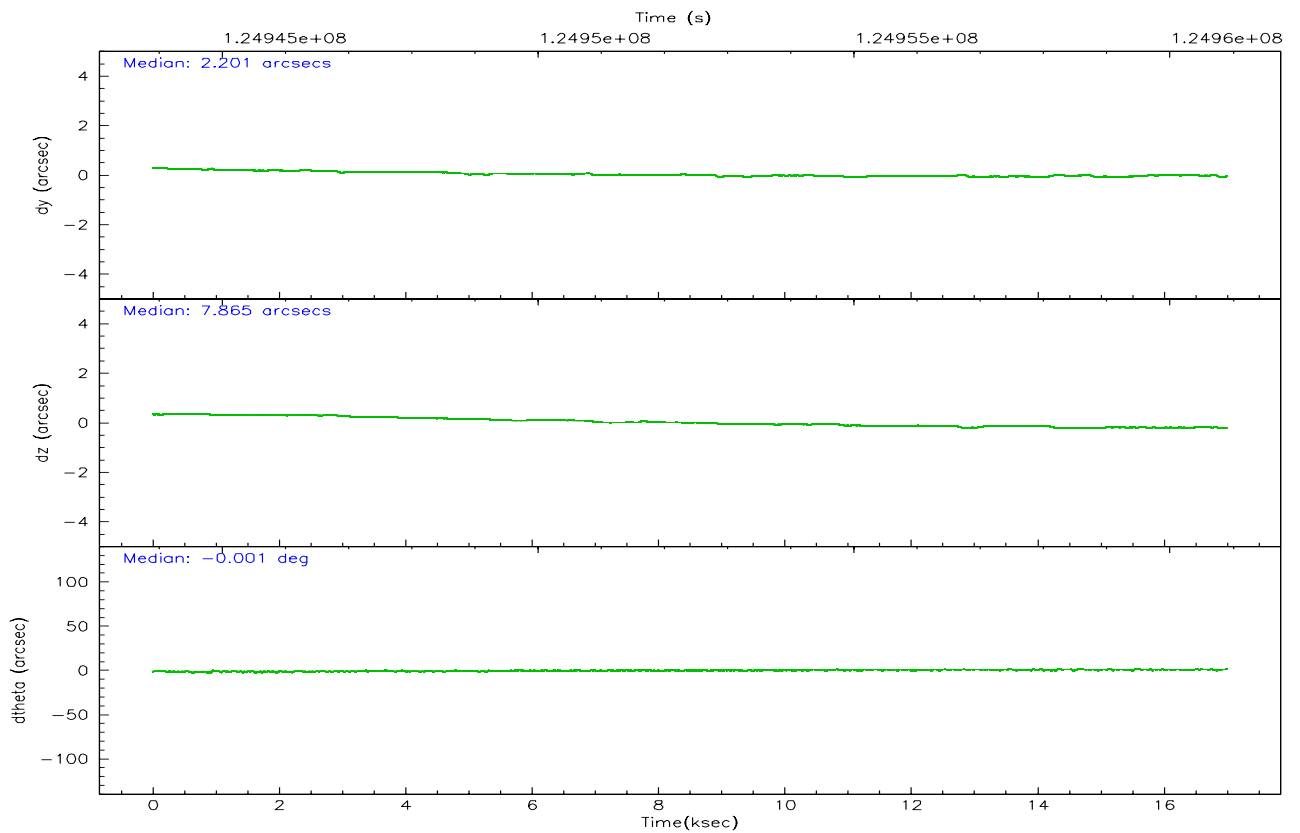
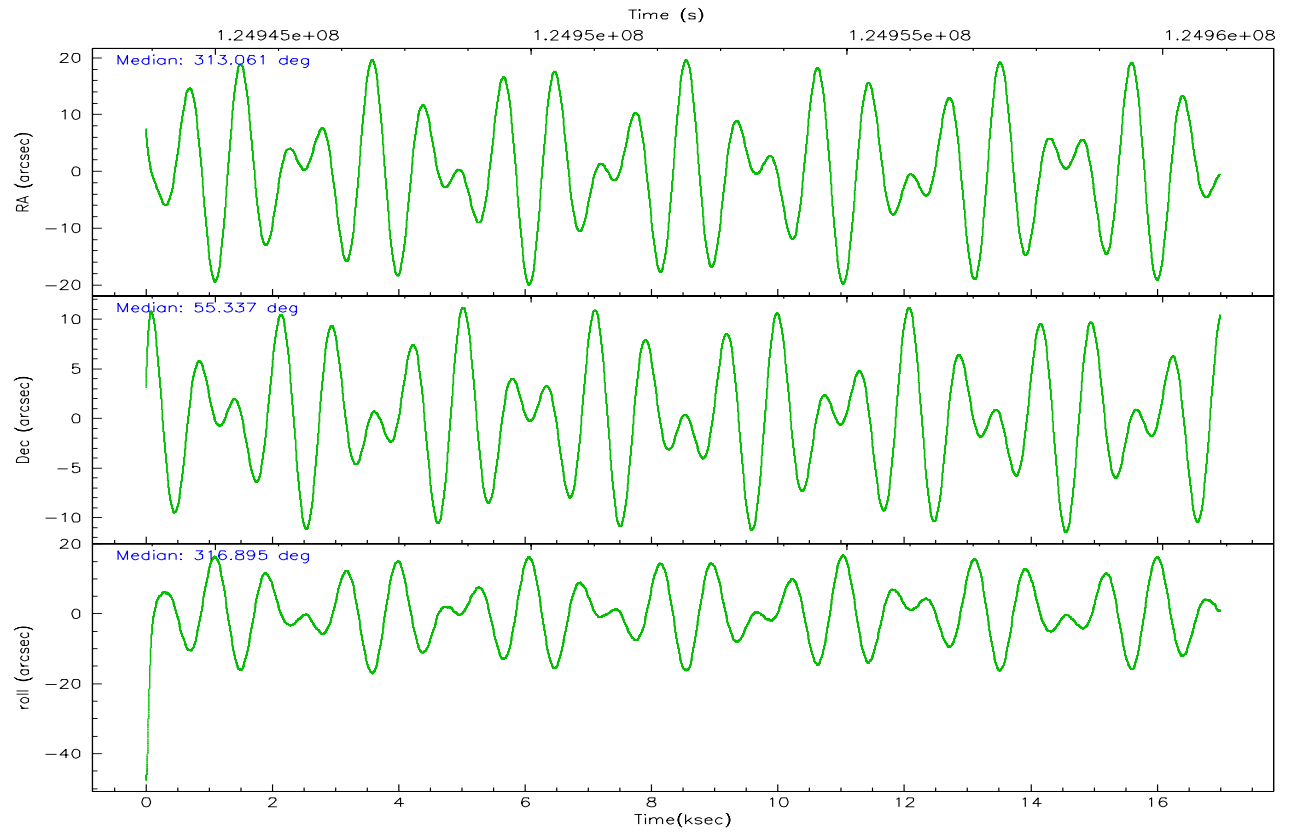
	ccd 0	ccd 1	ccd 2	ccd 3	ccd 6	ccd 7
grade 0 events	6901	6260	6830	6630	5826	5619
	6%	6%	6%	5%	5%	4%
grade 1 events	62	62	54	61	48	156
	0%	0%	0%	0%	0%	0%
grade 2 events	3509	3468	3354	3321	3404	11682
	3%	3%	3%	2%	2%	8%
grade 3 events	1234	1361	1175	1231	1258	5385
	1%	1%	1%	1%	1%	3%
grade 4 events	1245	1368	1216	1192	1291	5275
	1%	1%	1%	1%	1%	3%
grade 5 events	3848	4171	3734	4208	4687	13287
	3%	4%	3%	3%	4%	9%
grade 6 events	2802	2938	2588	2718	2881	30798
	2%	2%	2%	2%	2%	22%
grade 7 events	82349	82382	92135	91388	95334	67400
	80%	80%	82%	82%	83%	48%

2.2 Compared Parameters

Parameter	Planned	Actual	Parameter	Planned	Actual
Instrument	ACIS	ACIS	Obspar format version number	6	6
Detector	ACIS-012367	ACIS-012367	Obspar file type	PREDICTED	ACTUAL
Grating	NONE	NONE	Obspar update status	NONE	UPDATED
Data mode	FAINT	FAINT	Number of optional ACIS chips dropped	0	0
Observation mode	POINTING	POINTING	On-chip summing requested	N	N
Pointing RA	313.014696	313.0616879613291	Subarray requested	NONE	NONE
Pointing Dec	55.343515	55.33737059708668	Alternating exposures requested	N	N
Pointing Roll	316.732050	316.9020520324345	Primary exposure time	0.000000	3.2
SIM focus pos (mm)	-0.782348	-0.7809083437167272			
SIM defocus (mm)	0	0.001439871863259334			
SIM translation stage pos (mm)	-233.592463	-233.5874344608287			
SIM translation stage offset (mm)	0	-0.005018542100998502			
Observation start time	124944026.184000	124943085.68521			
Observation start date	2001-12-17T02:39:22	2001-12-17T02:24:45			
Observation end time	124960901.184000	124961215.88594			
Observation end date	2001-12-17T07:20:37	2001-12-17T07:26:55			
Read mode	TIMED	TIMED			

2.3 Aspect



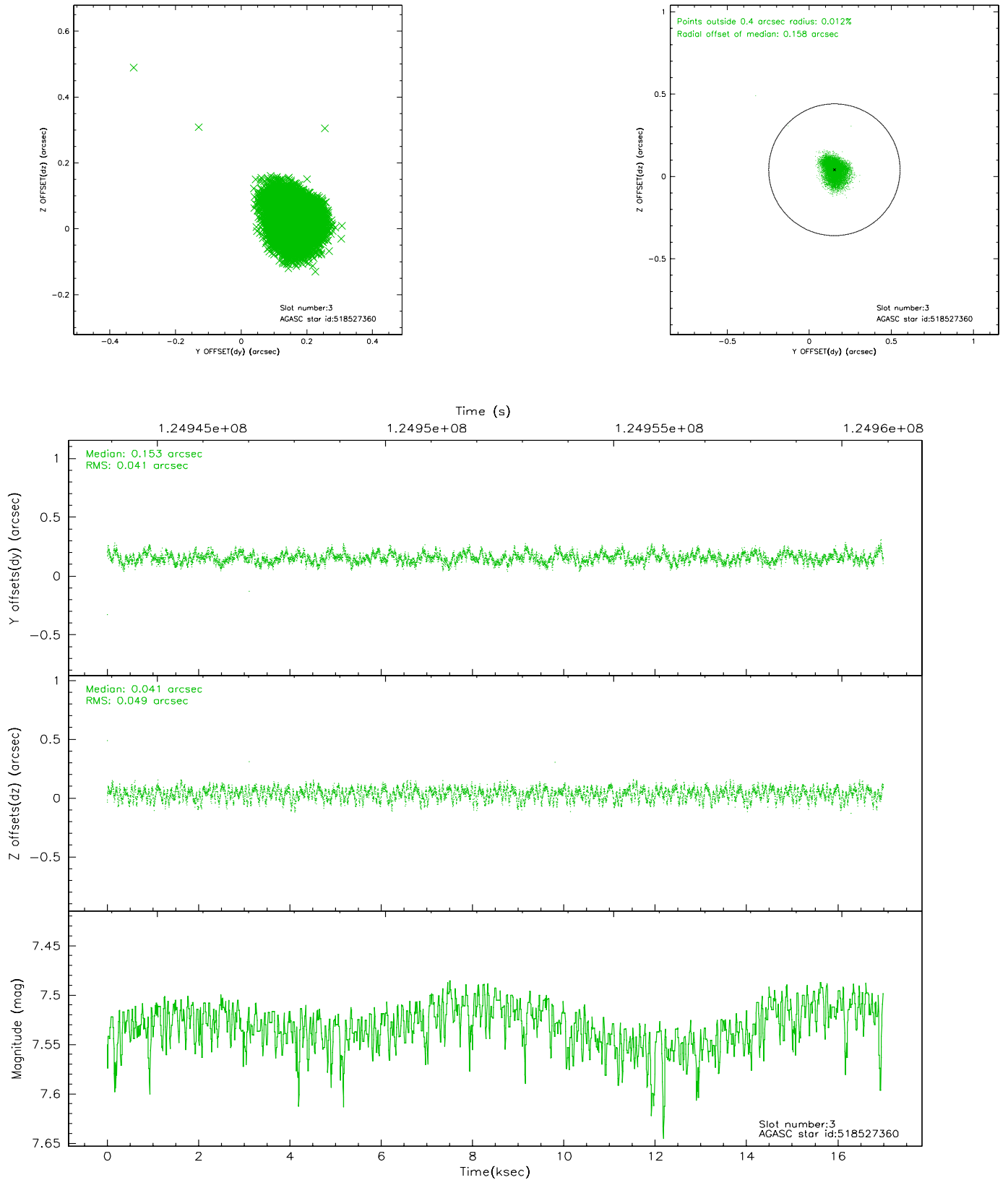


Slot Statistics

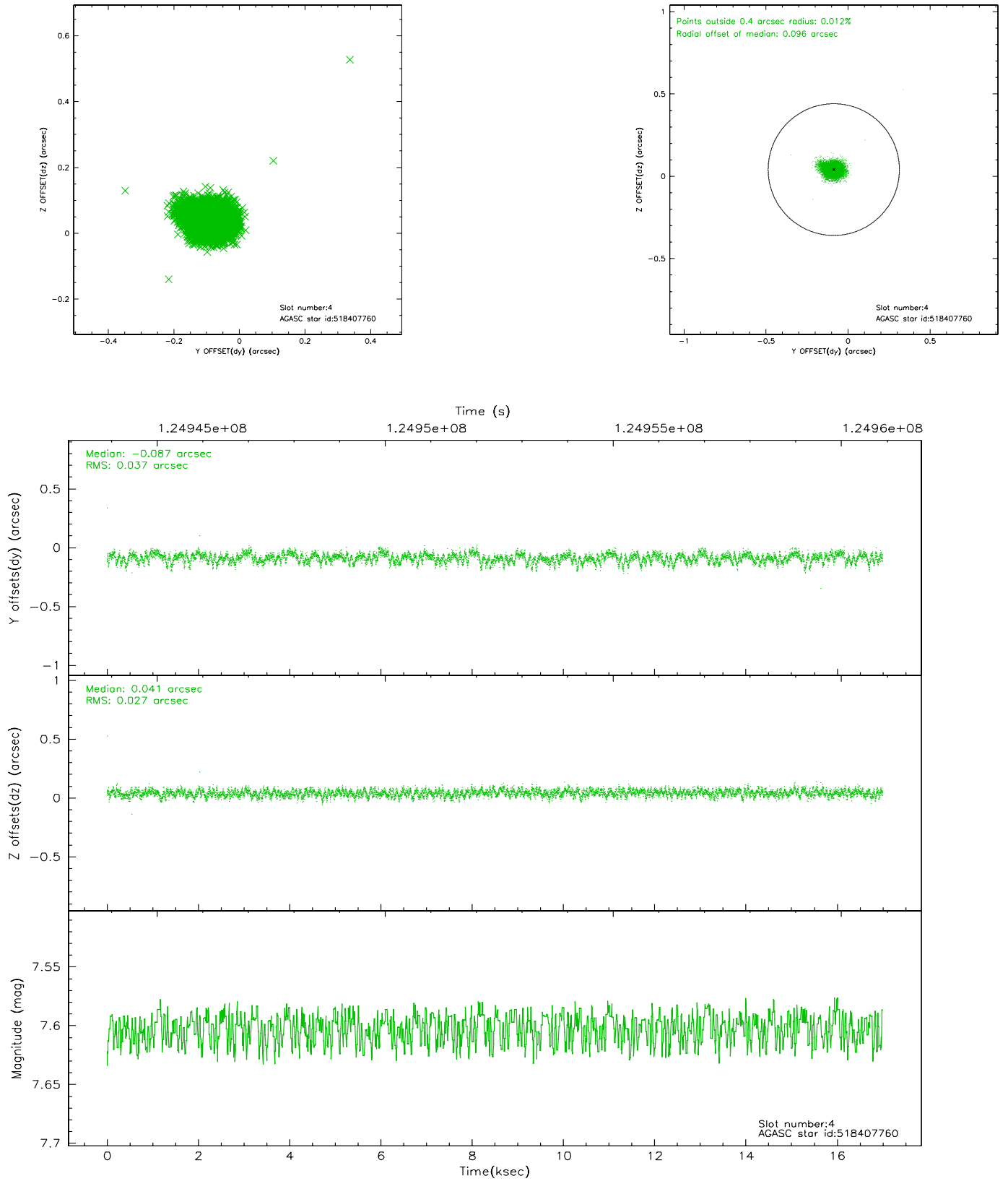
slot	status	id	mag	n_pts	med_dy	med_dz	dr1	dr2	ra	dec	mean_y	mean_z
0	FID	ACIS-I-1	7.25	4145	-0.051	0.091	0.009	0.015	0.000000	0.000000	937.51	-831.24
1	FID	ACIS-I-5	7.24	4144	0.013	0.030	0.007	0.011	0.000000	0.000000	-1810.37	1066.11
2	FID	ACIS-I-6	7.26	4147	-0.054	-0.051	0.008	0.012	0.000000	0.000000	402.82	1710.78
3	GUIDE	518527360	7.53	8292	0.153	0.041	0.069	0.107	314.452532	55.487667	1759.46	2411.05
4	GUIDE	518407760	7.60	8288	-0.087	0.041	0.048	0.079	313.102071	54.641204	1866.42	-1714.96
5	GUIDE	518399328	8.57	8289	-0.001	0.041	0.058	0.093	311.885407	55.569616	-2243.41	-968.91
6	GUIDE	518532320	8.57	8287	-0.118	-0.074	0.062	0.097	313.414470	55.961125	-939.00	2173.28
7	GUIDE	518406888	9.18	8287	0.053	-0.042	0.081	0.129	311.938121	55.277978	-1456.62	-1671.66

2.4 Star Slots

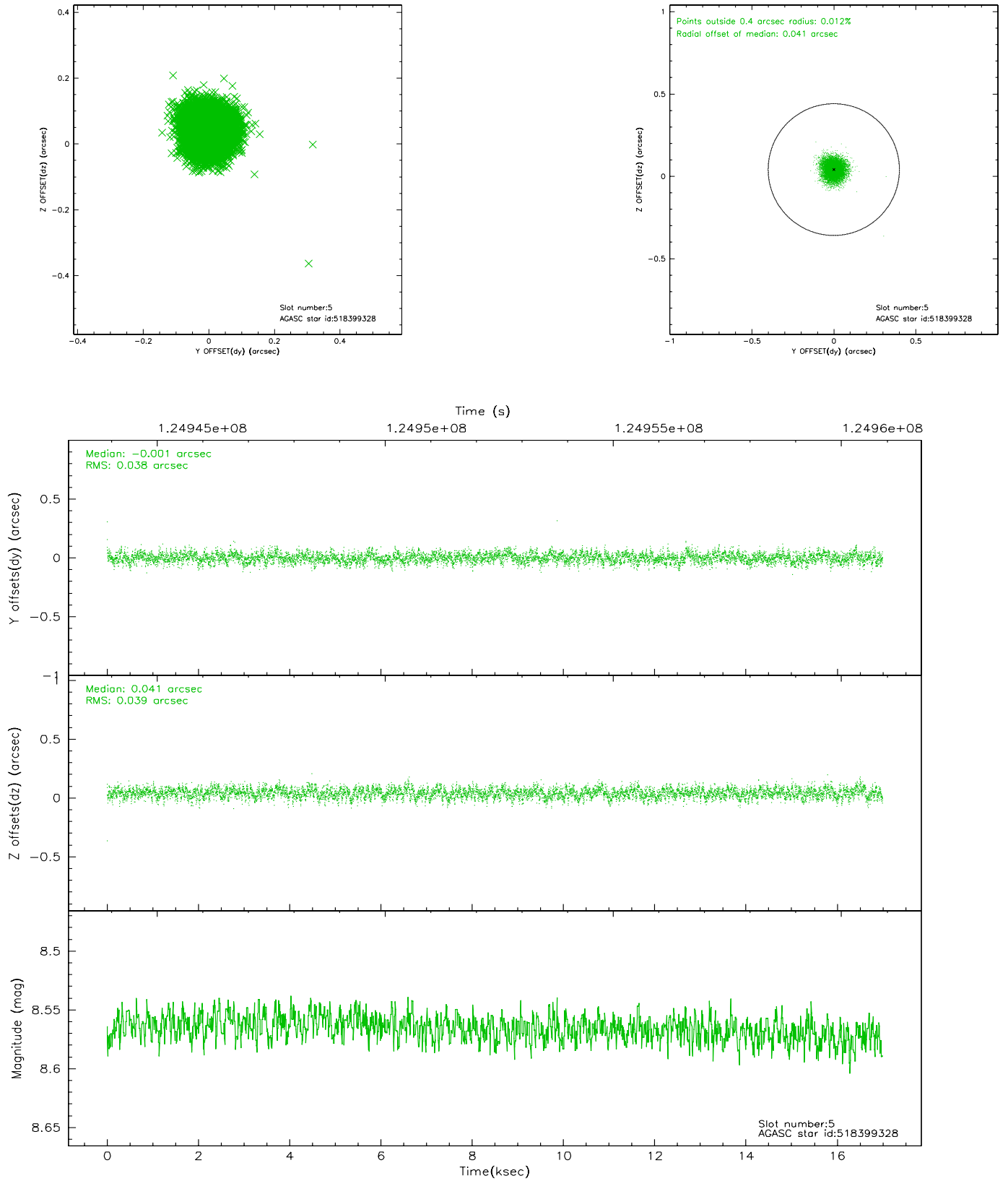
2.4.1 Slot 3



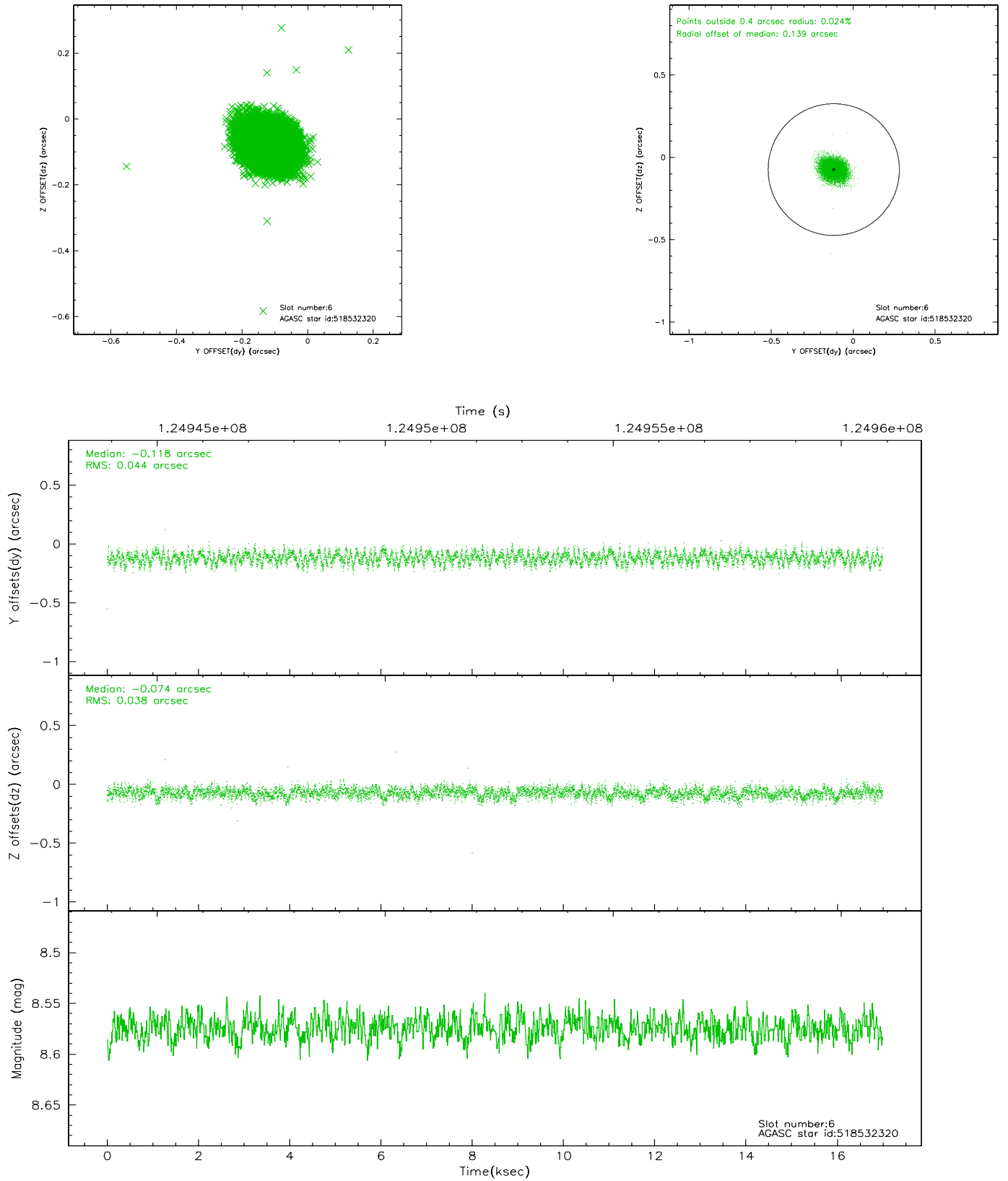
2.4.2 Slot 4



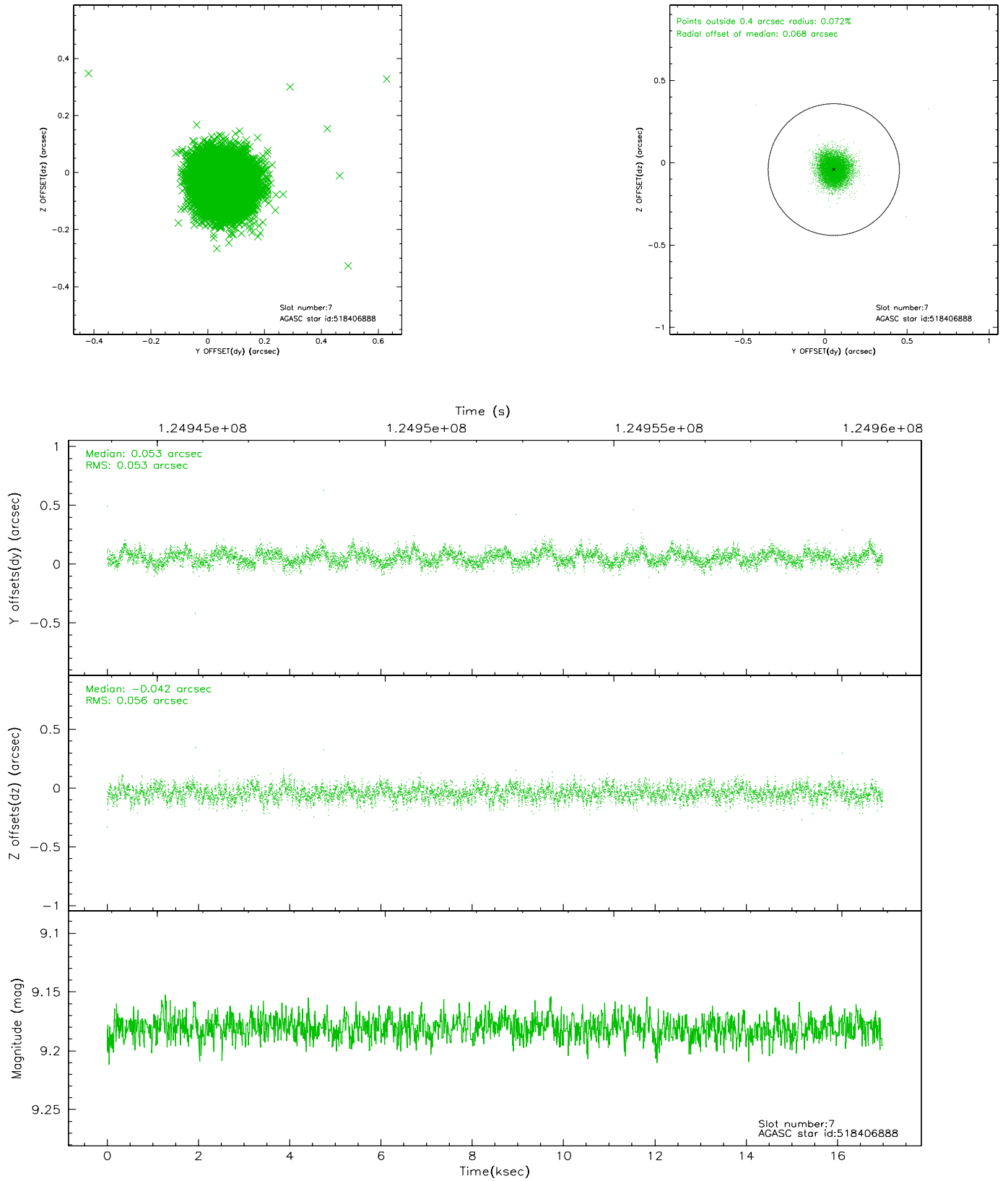
2.4.3 Slot 5



2.4.4 Slot 6

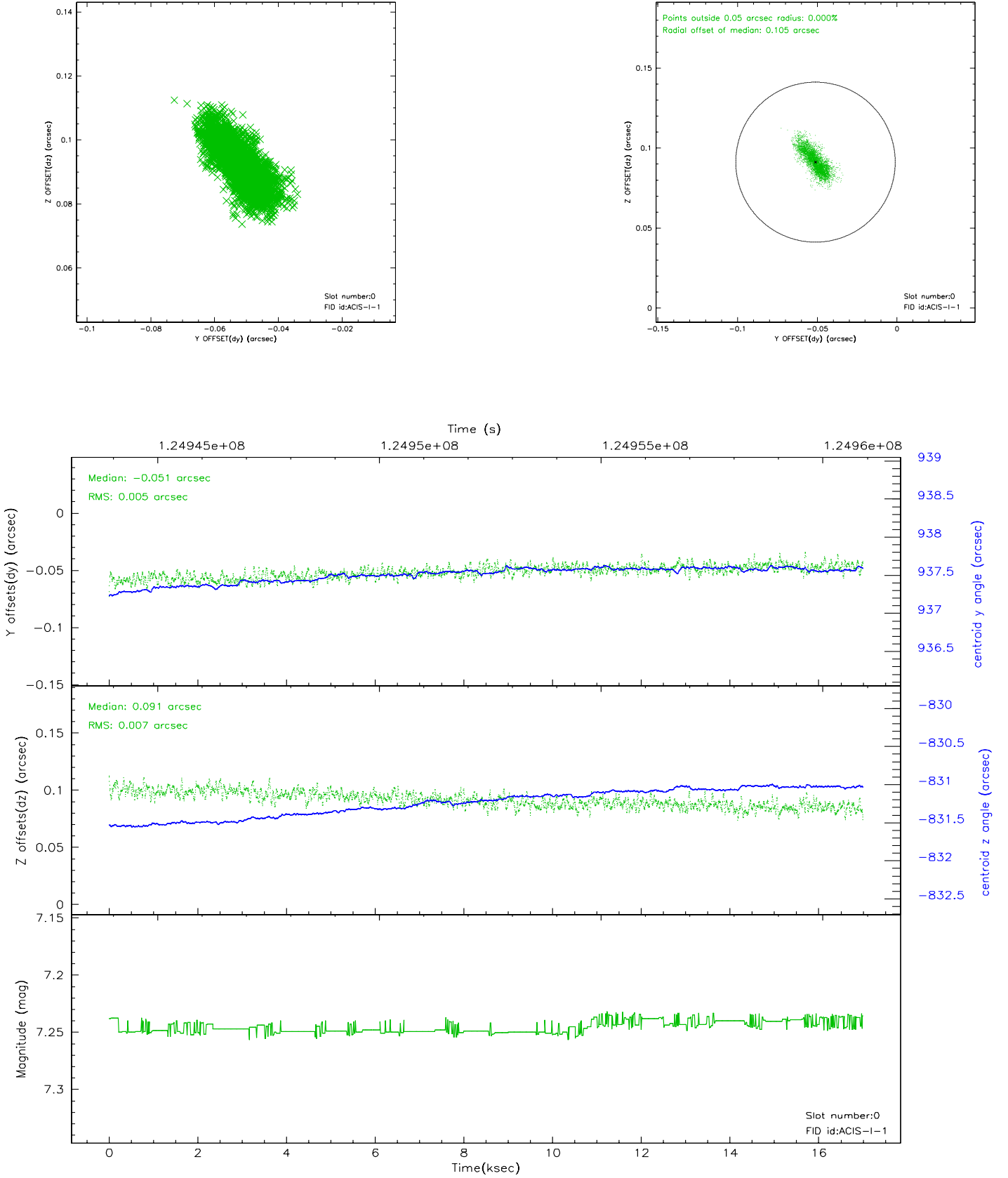


2.4.5 Slot 7

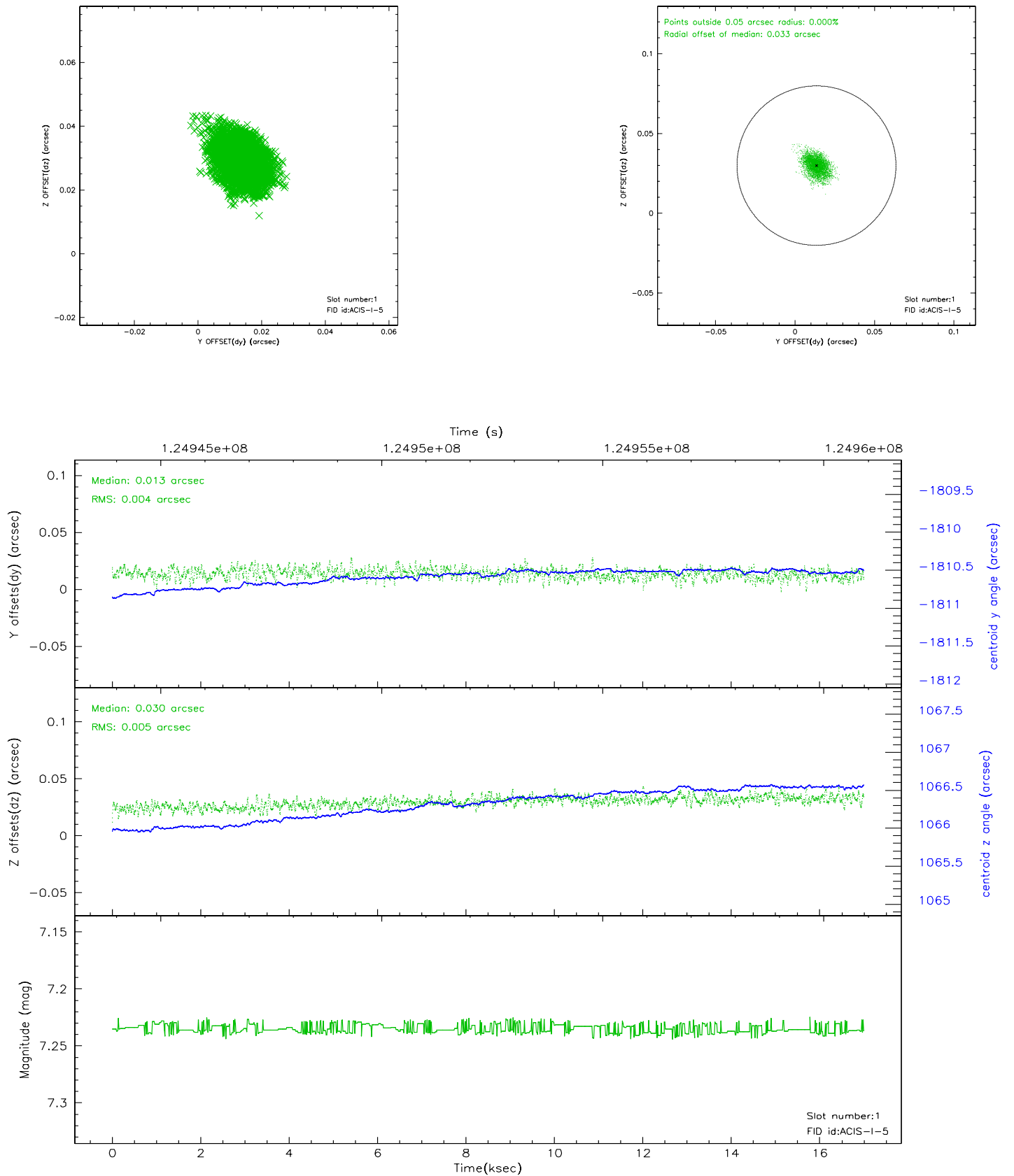


2.5 FID Slots

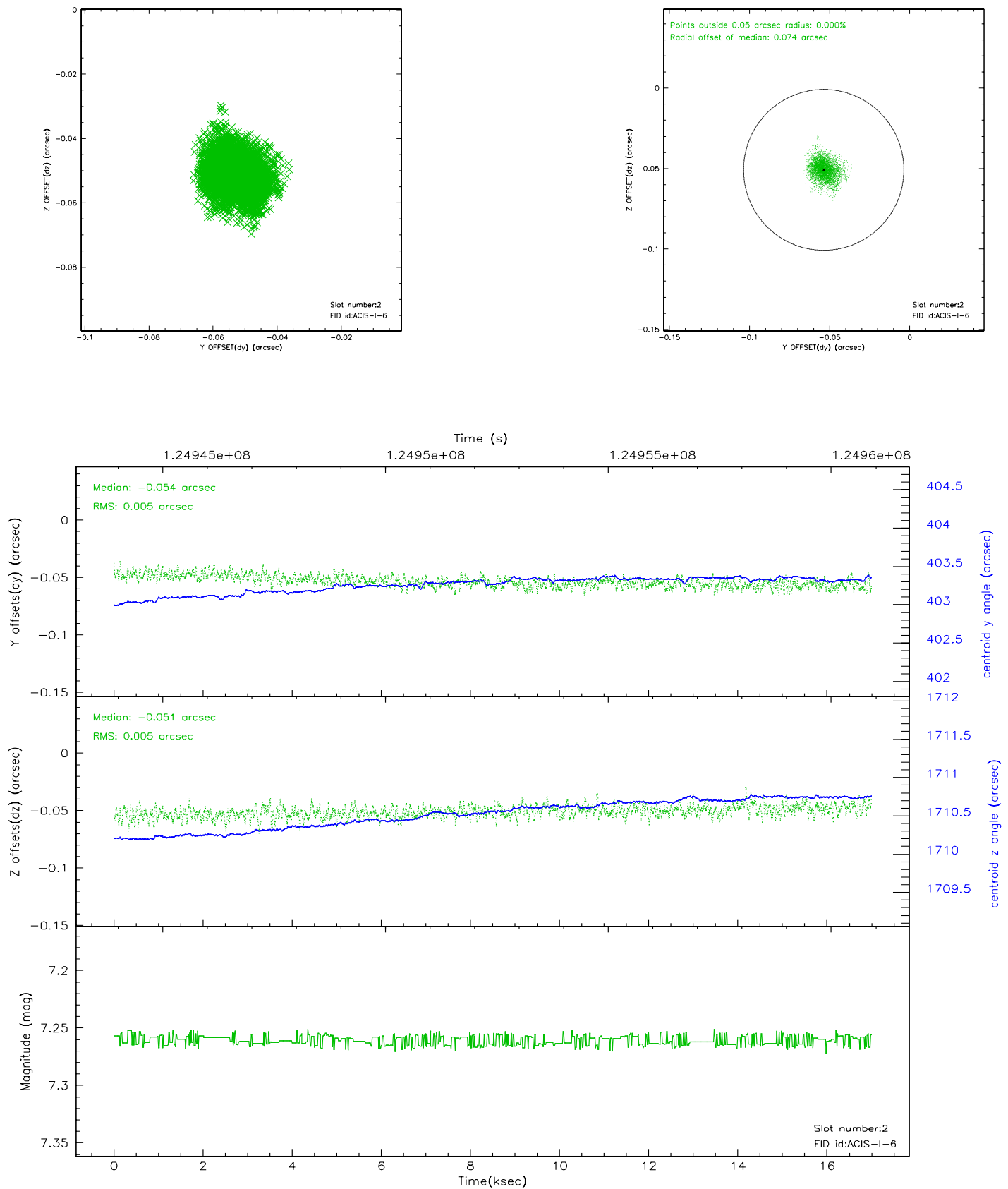
2.5.1 Slot 0



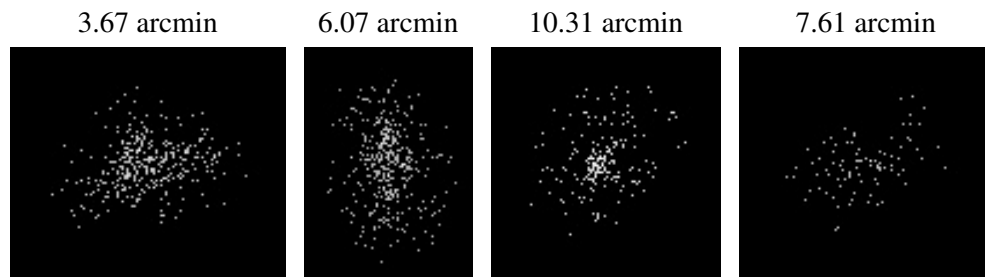
2.5.2 Slot 1



2.5.3 Slot 2



3 Point Sources



A Summary

A.1 Status

V&V Scientist	Beth Sundheim
V&V Date (YYYY-MM-DD)	2007.01.18
V&V Edition	1
V&V Disposition and Status	OK
V&V Charge Time	16.633

A.2 Comments