

V&V Reference Report

L2 ASCDS Version : 7.6.9

Observation 2805 - L2 Version 001
Chandra X-Ray Center

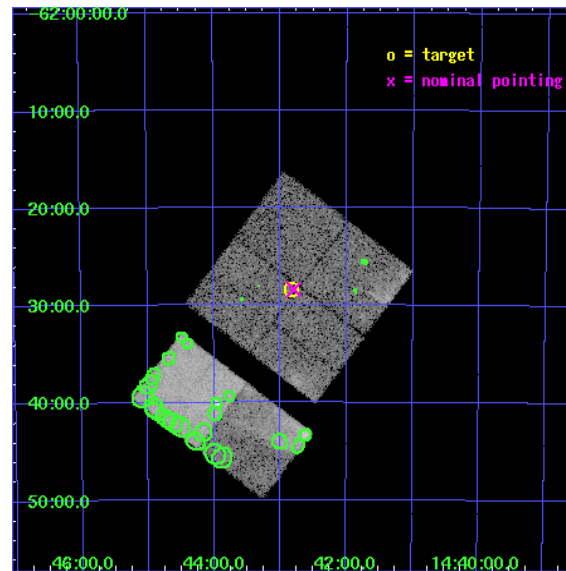
L2 Processing Date : Oct 5 2006

Contents

1	Front	2
2	OBI	3
2.1	OBI	3
2.1.1	Images	3
2.1.2	Bias	3
2.1.3	Parameters	4
2.1.4	Events	4
2.2	Compared Parameters	5
2.3	Aspect	6
2.4	Star Slots	9
2.4.1	Slot 3	9
2.4.2	Slot 4	10
2.4.3	Slot 5	11
2.4.4	Slot 6	12
2.4.5	Slot 7	13
2.5	FID Slots	14
2.5.1	Slot 0	14
2.5.2	Slot 1	15
2.5.3	Slot 2	16
3	Point Sources	17
A	Summary	18
A.1	Status	18
A.2	Comments	18

1 Front

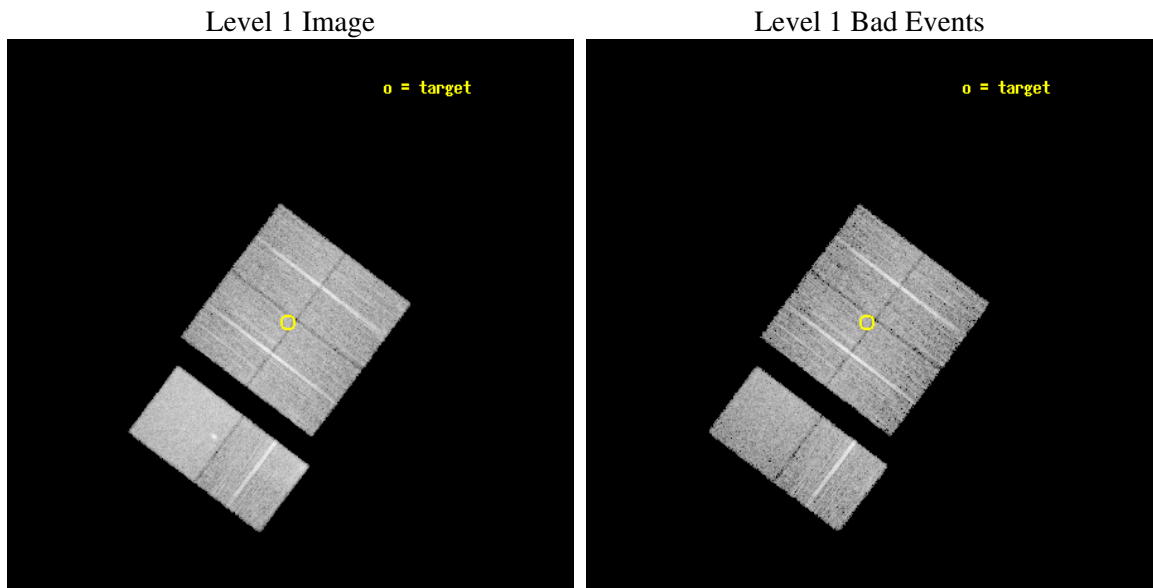
seq_num	500255
obs_id	2805
title	A CHANDRA SURVEY FOR COMPACT OBJECTS IN SUPERNOVA REMNANTS
observer	Prof. Shrinivas Kulkarni
object	G315.4-2.3
dtcycle	0
cycle	P
ra_targ	220.708333
dec_targ	-62.472222
ra_nom	220.69852474762
dec_nom	-62.473365997032
roll_nom	217.04728755259
revision	2
ontime	10118.399962306
livetime	9990.2746894143
ontime0	10118.399962306
ontime1	10118.399962306
ontime2	10118.399962306
ontime3	10118.399962306
ontime6	10118.399962306
ontime7	10118.399962306
l2events	106402



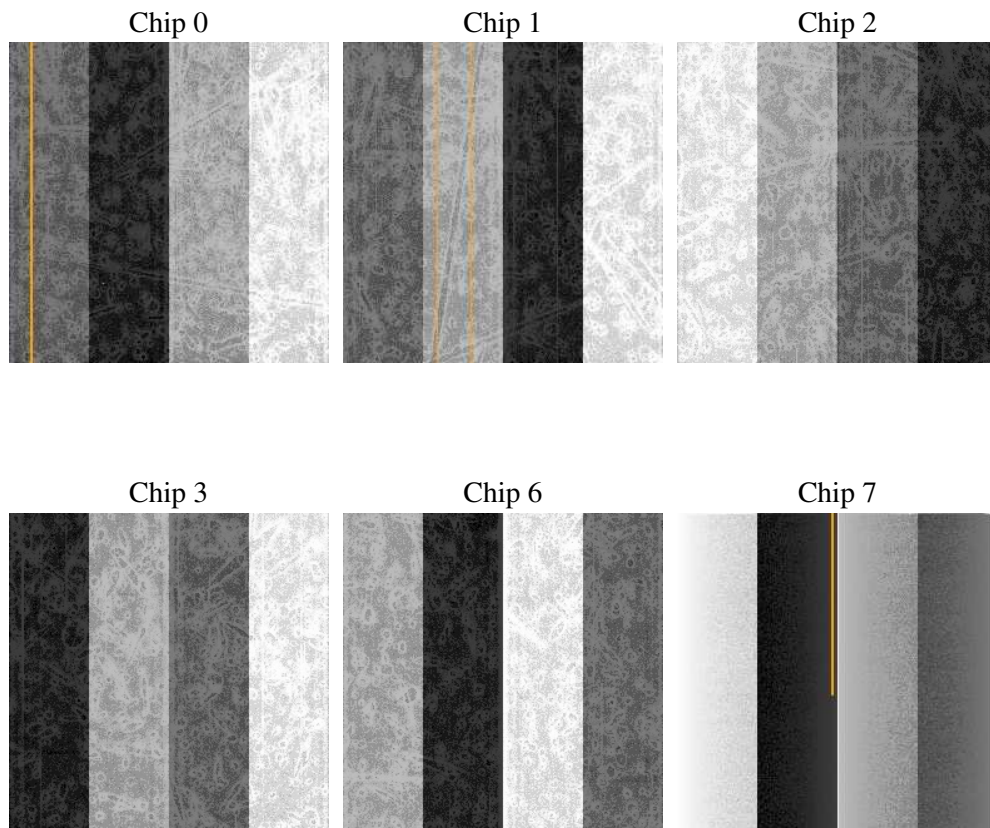
2 OBI

2.1 OBI

2.1.1 Images



2.1.2 Bias



2.1.3 Parameters

obi_num	0
ascdsver	7.6.9
caldbver	3.2.3
date	2006-10-05T16:15:31
revision	2

sched_exp_time	10000.000000
ontime	12043.563418478
ontime0	12043.563388556
ontime1	12043.563418478
ontime2	12043.563388556
ontime3	12043.563418478
ontime6	12043.563418478
ontime7	12043.563418478
l1events	524485

2.1.4 Events

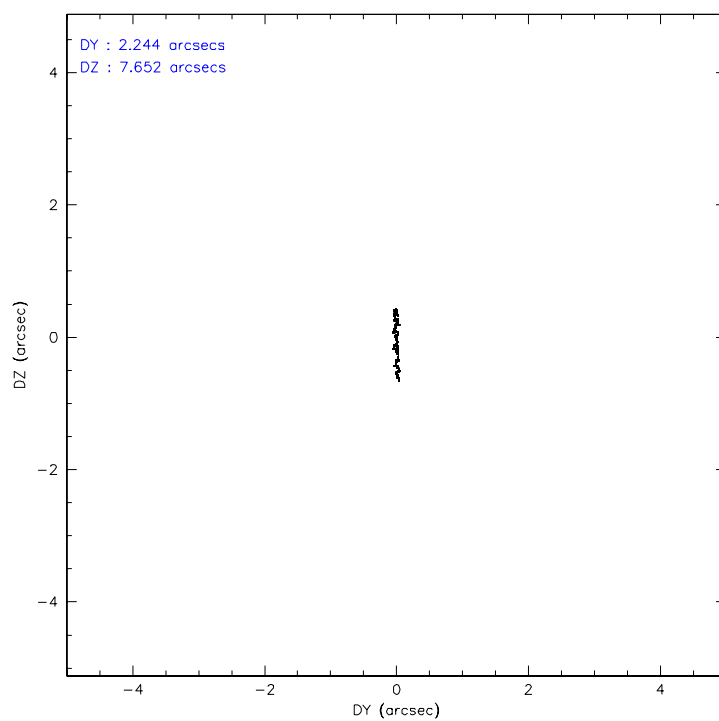
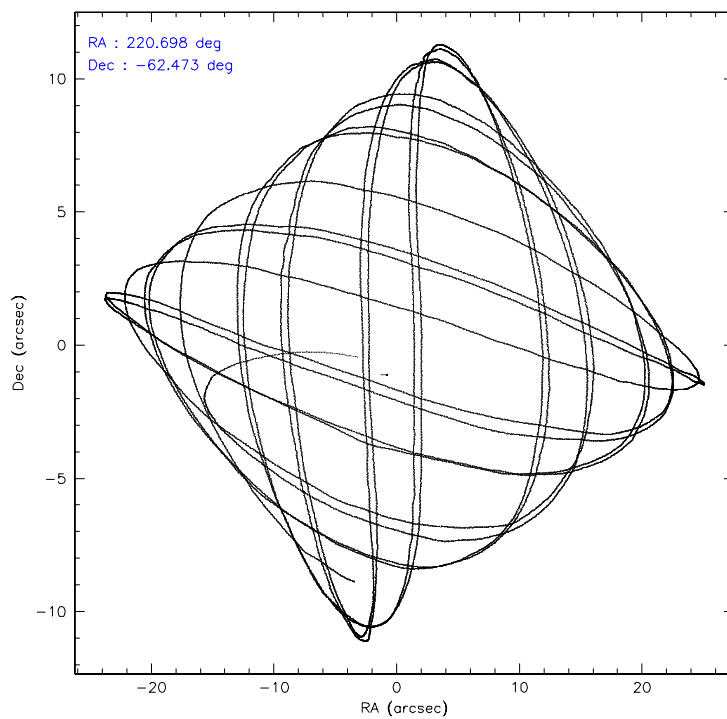
	ccd 0	ccd 1	ccd 2	ccd 3	ccd 6	ccd 7
level 1 events	76814	74546	83749	78980	93437	116959
rejected events	63156	63973	70621	68214	73344	70578
rejected %	82%	85%	84%	86%	78%	60%

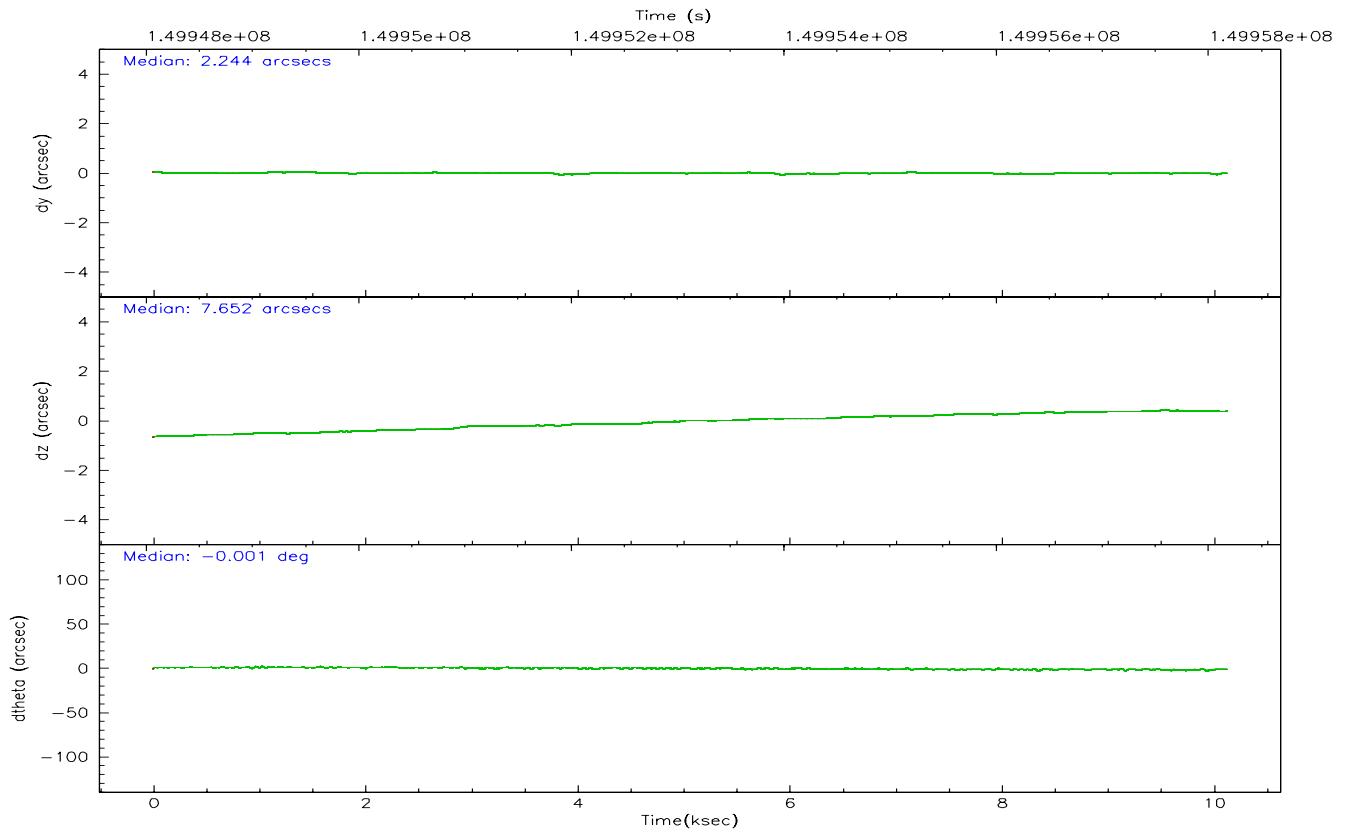
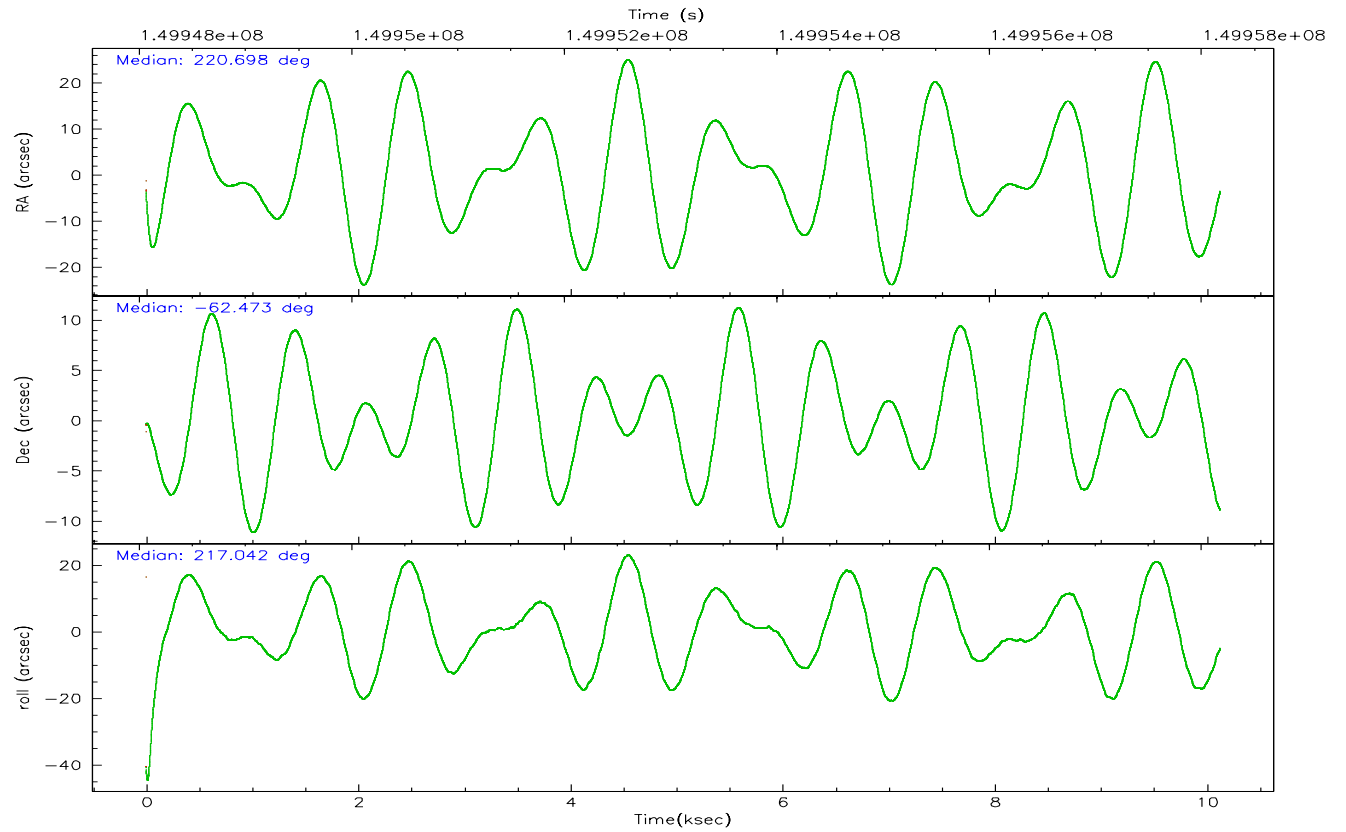
	ccd 0	ccd 1	ccd 2	ccd 3	ccd 6	ccd 7
grade 0 events	9388	6073	9084	7081	14630	5887
	12%	8%	10%	8%	15%	5%
grade 1 events	59	58	53	58	83	59
	0%	0%	0%	0%	0%	0%
grade 2 events	2343	2222	2338	1962	2984	13464
	3%	2%	2%	2%	3%	11%
grade 3 events	1053	1055	1030	982	1184	3396
	1%	1%	1%	1%	1%	2%
grade 4 events	1003	1033	949	938	1134	3245
	1%	1%	1%	1%	1%	2%
grade 5 events	2969	3112	2931	3280	3550	6679
	3%	4%	3%	4%	3%	5%
grade 6 events	1629	1886	1576	1575	2001	27279
	2%	2%	1%	1%	2%	23%
grade 7 events	58370	59107	65788	63104	67871	56950
	75%	79%	78%	79%	72%	48%

2.2 Compared Parameters

Parameter	Planned	Actual	Parameter	Planned	Actual
Instrument	ACIS	ACIS	Obspar format version number	6	6
Detector	ACIS-012367	ACIS-012367	Obspar file type	PREDICTED	ACTUAL
Grating	NONE	NONE	Obspar update status	NONE	UPDATED
Data mode	FAINT	FAINT	Number of optional ACIS chips dropped	0	0
Observation mode	POINTING	POINTING	On-chip summing requested	N	N
Pointing RA	220.721468	220.6985247476176	Subarray requested	NONE	NONE
Pointing Dec	-62.448083	-62.47336599703192	Alternating exposures requested	N	N
Pointing Roll	216.858997	217.0472875525912	Primary exposure time	0.000000	3.2
SIM focus pos (mm)	-0.782348	-0.7809083437167272			
SIM defocus (mm)	0	0.001439871863259334			
SIM translation stage pos (mm)	-233.592463	-233.5874344608287			
SIM translation stage offset (mm)	0	-0.005018542100998502			
Observation start time	149948183.184000	149946137.20433			
Observation start date	2002-10-02T12:15:19	2002-10-02T11:42:17			
Observation end time	149958183.184000	149958814.40485			
Observation end date	2002-10-02T15:01:59	2002-10-02T15:13:34			
Read mode	TIMED	TIMED			

2.3 Aspect



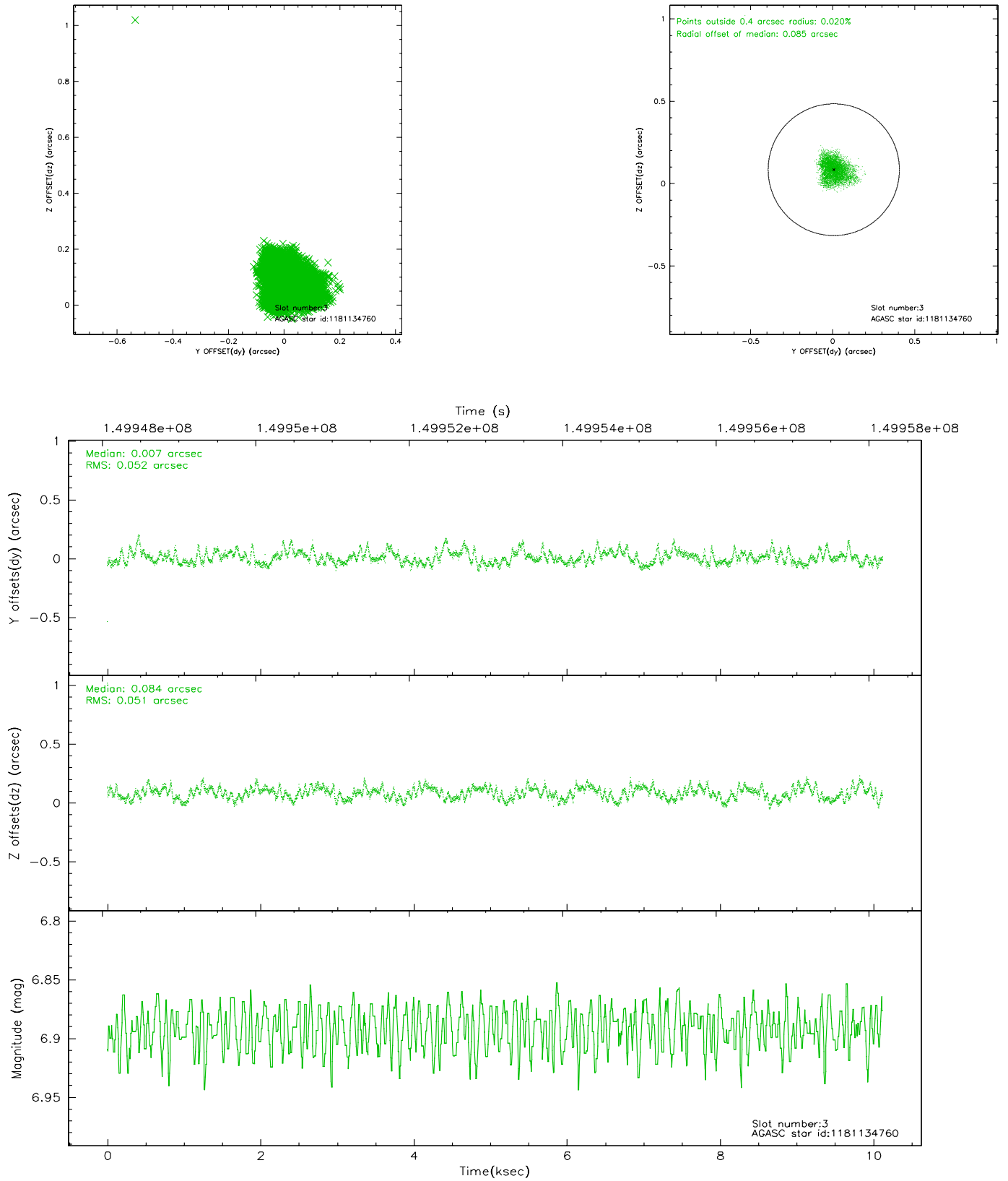


Slot Statistics

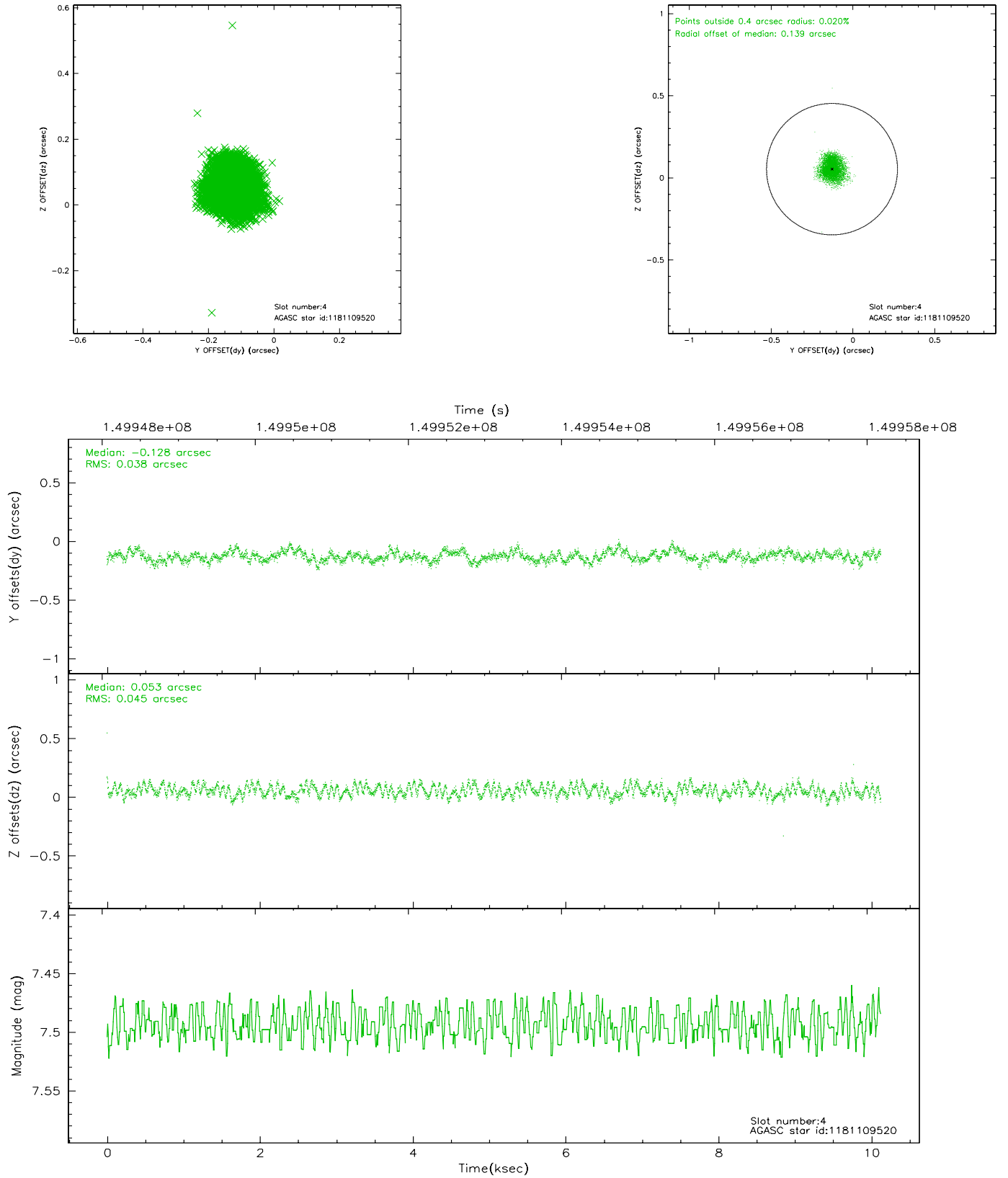
slot	status	id	mag	n_pts	med_dy	med_dz	dr1	dr2	ra	dec	mean_y	mean_z
0	FID	ACIS-I-1	7.24	2471	-0.029	0.068	0.018	0.028	0.000000	0.000000	937.52	-830.96
1	FID	ACIS-I-5	7.24	2471	-0.021	0.038	0.009	0.015	0.000000	0.000000	-1810.25	1066.29
2	FID	ACIS-I-6	7.26	2471	-0.040	-0.036	0.012	0.021	0.000000	0.000000	402.54	1711.27
3	GUIDE	1181134760	6.89	4941	0.007	0.084	0.076	0.120	220.867249	-62.966666	928.06	1637.41
4	GUIDE	1181109520	7.49	4941	-0.128	0.053	0.064	0.097	221.139366	-61.928294	-1688.30	-1070.34
5	GUIDE	1181109144	8.36	4937	-0.055	-0.008	0.056	0.089	221.655127	-62.786083	-494.84	1904.41
6	GUIDE	1181131768	8.93	4940	0.258	-0.134	0.118	0.203	218.839667	-62.377760	2387.85	-2049.21
7	GUIDE	1180581152	9.65	4938	-0.068	0.002	0.100	0.173	221.180675	-61.731640	-2172.38	-1592.26

2.4 Star Slots

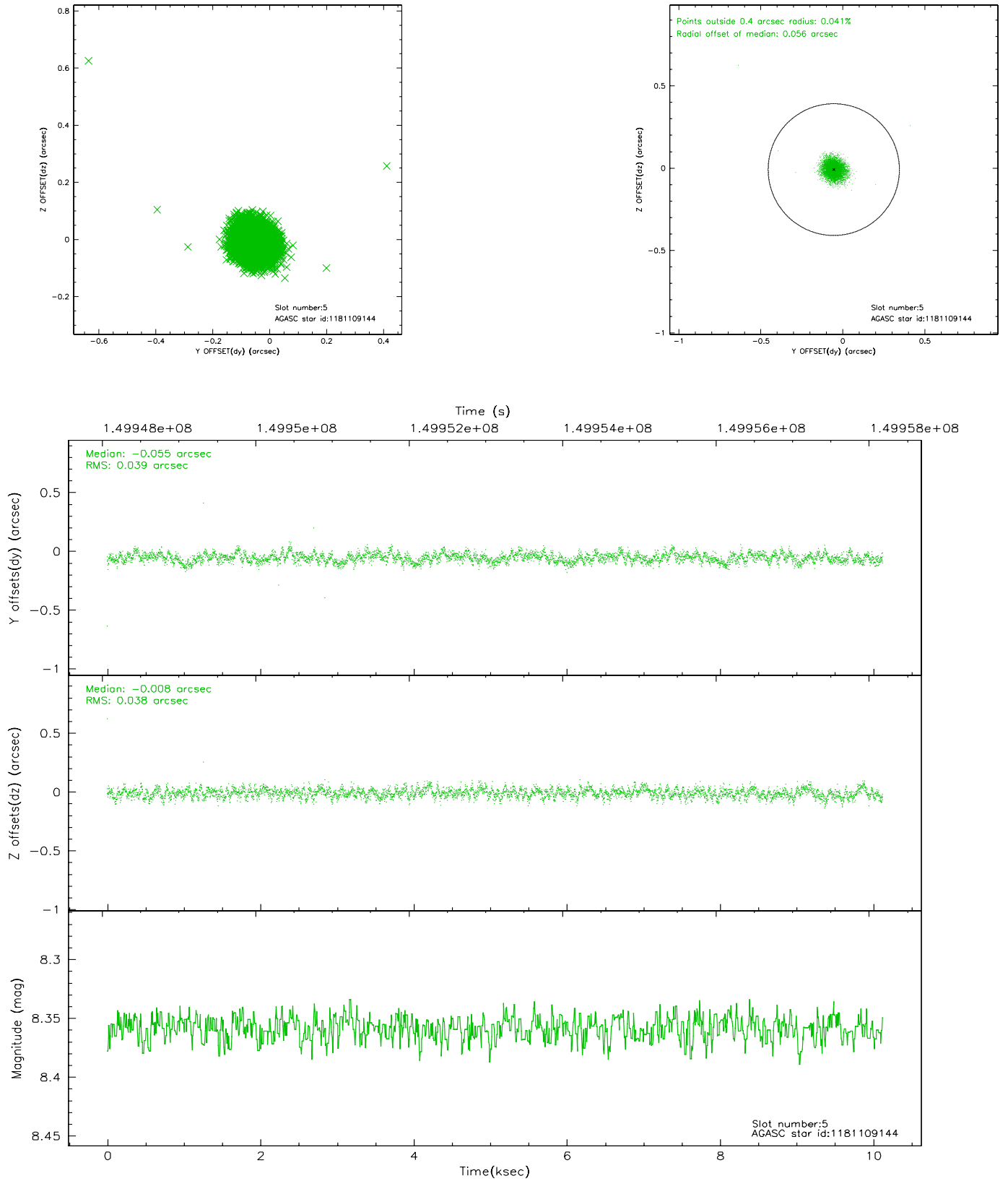
2.4.1 Slot 3



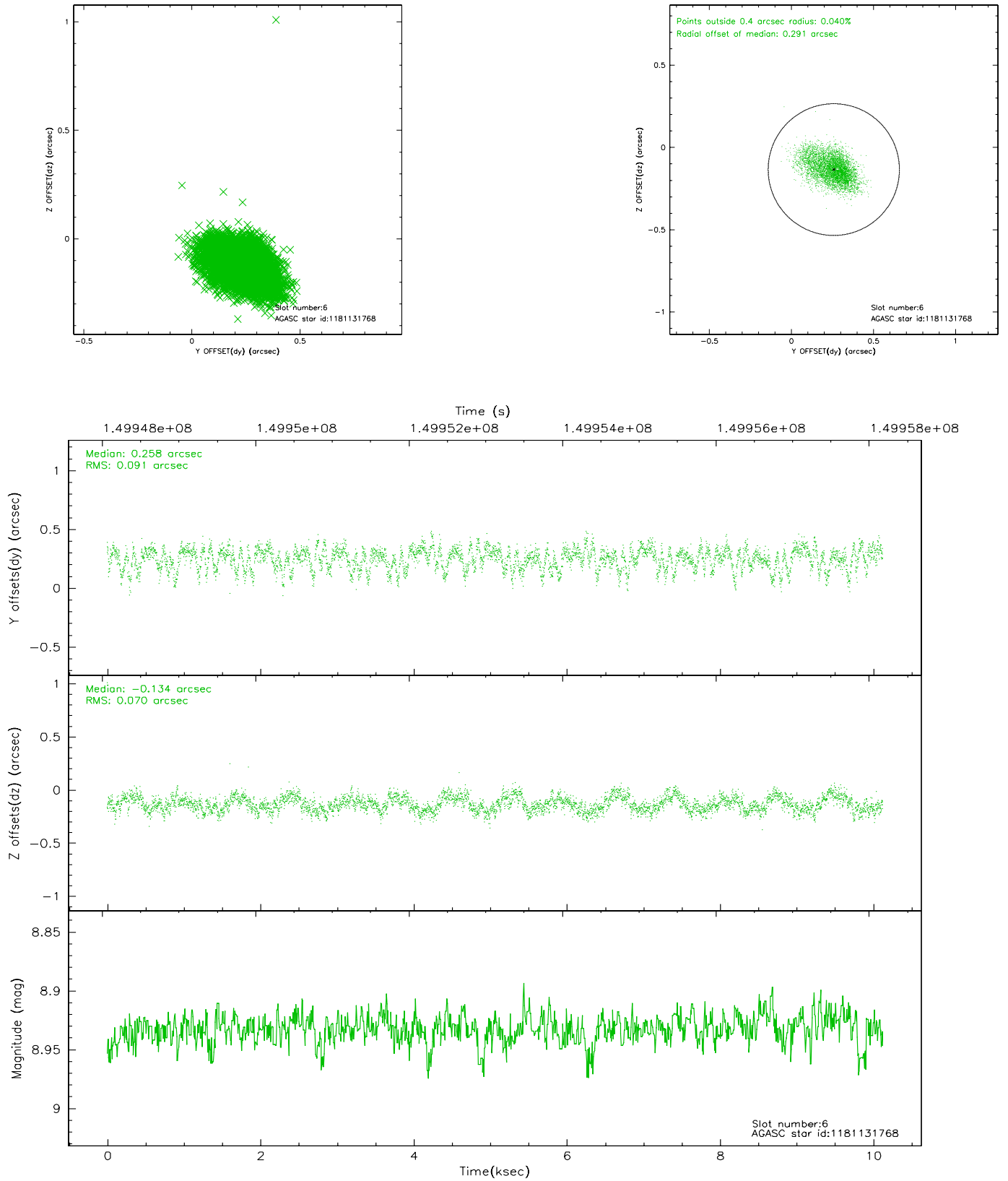
2.4.2 Slot 4



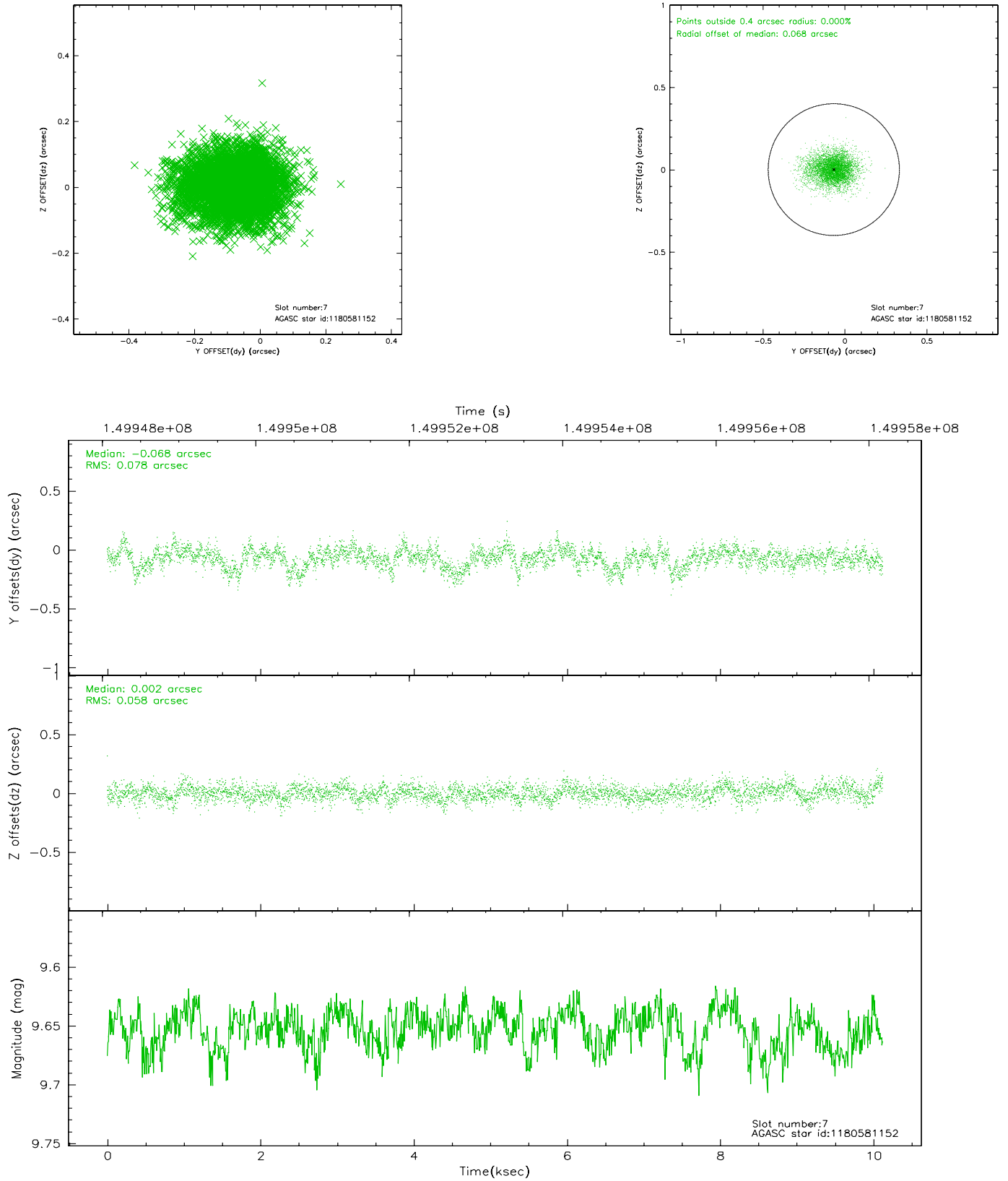
2.4.3 Slot 5



2.4.4 Slot 6

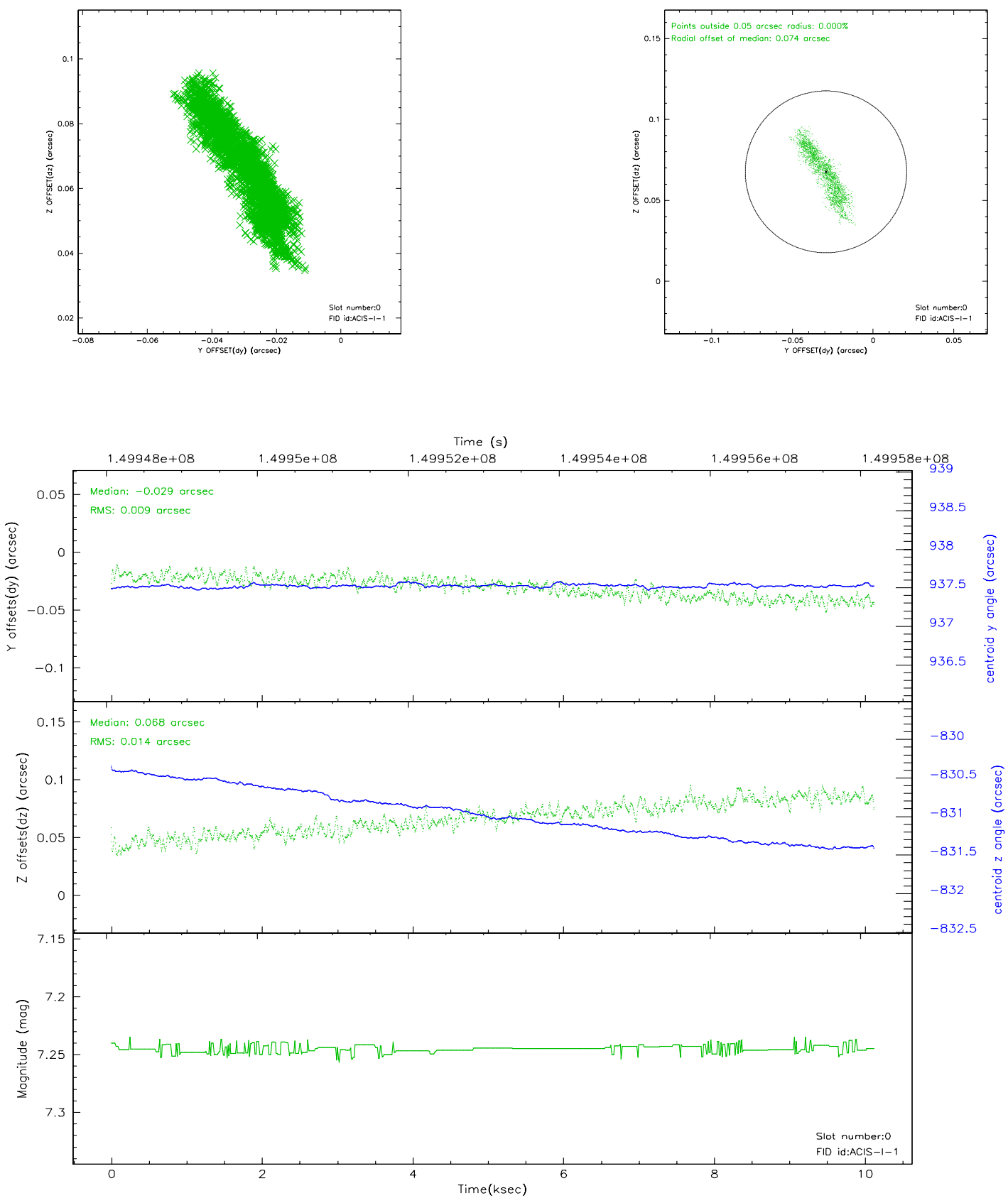


2.4.5 Slot 7

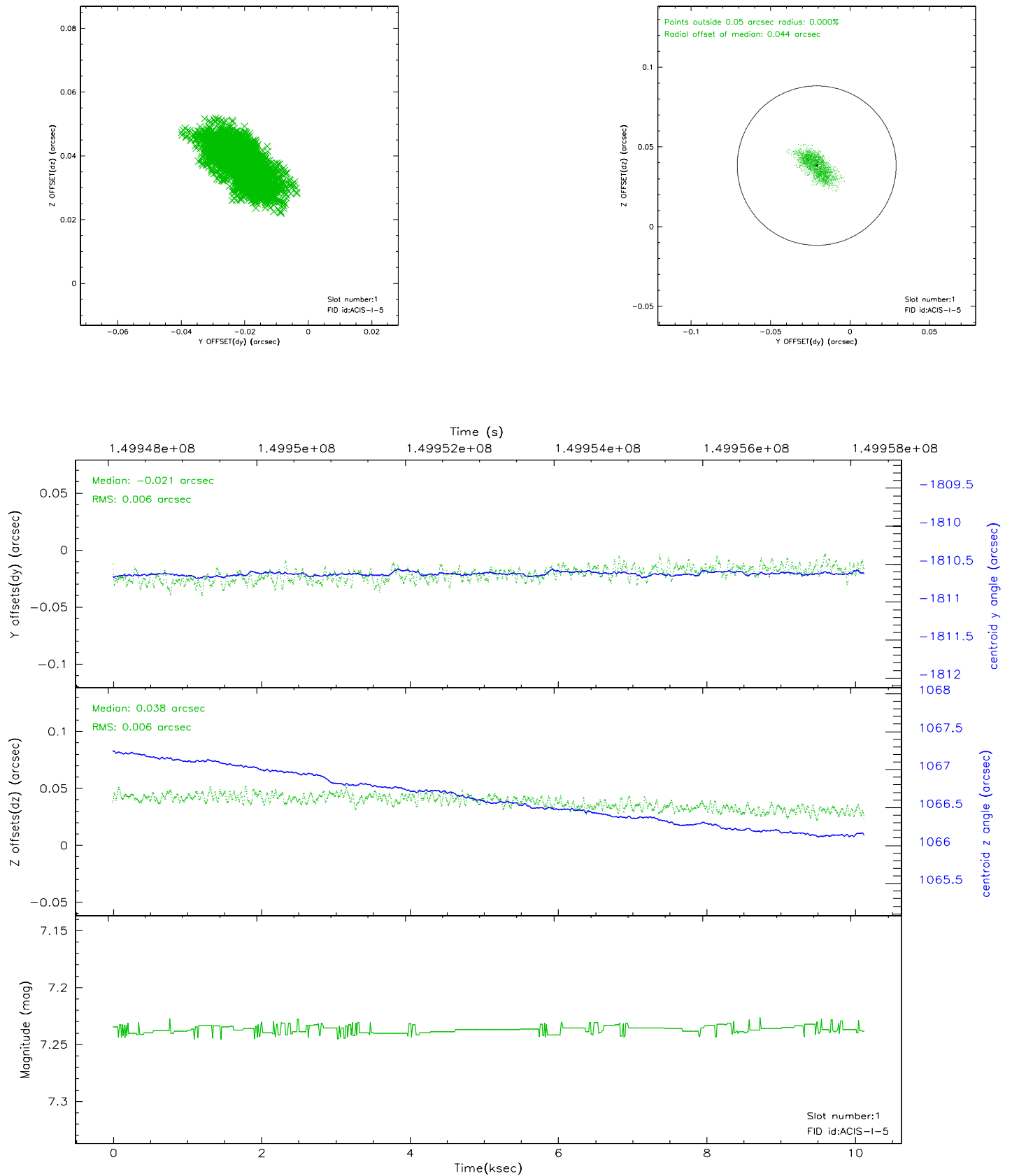


2.5 FID Slots

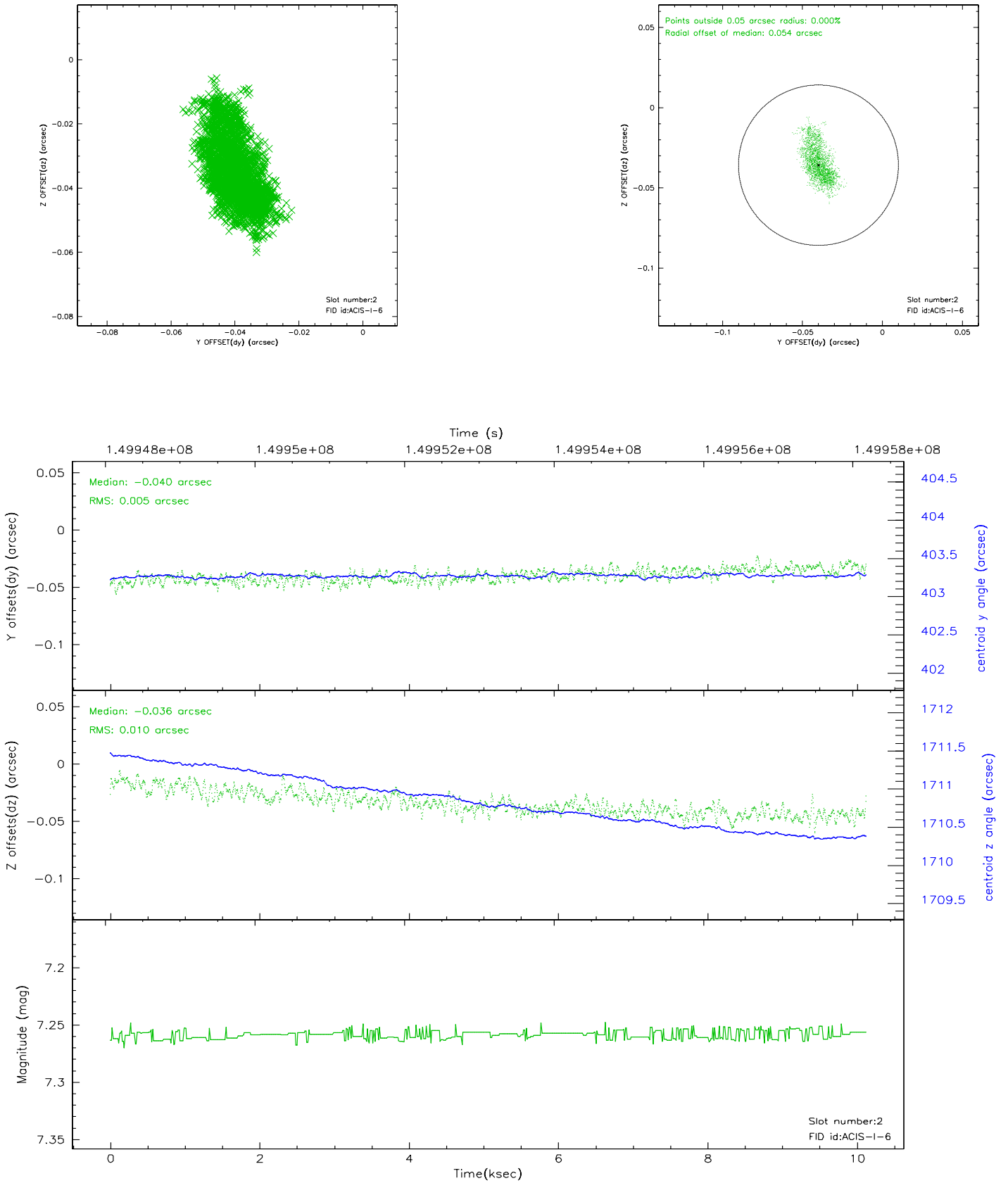
2.5.1 Slot 0



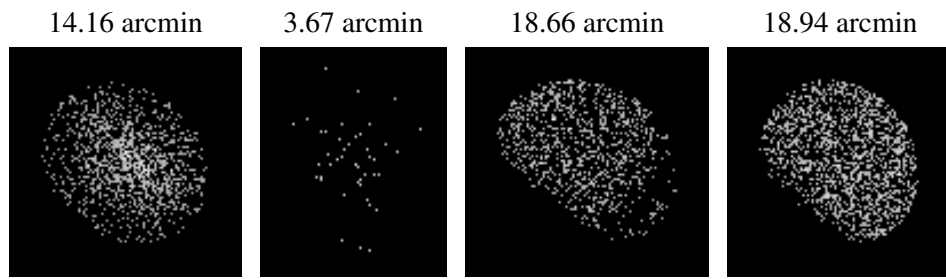
2.5.2 Slot 1



2.5.3 Slot 2



3 Point Sources



A Summary

A.1 Status

V&V Scientist	Jen Lauer
V&V Date (YYYY-MM-DD)	2006.10.05
V&V Edition	1
V&V Disposition and Status	OK
V&V Charge Time	10.118

A.2 Comments