

V&V Reference Report

L2 ASCDS Version : 7.6.8.1

Observation 2798 - L2 Version 001
Chandra X-Ray Center

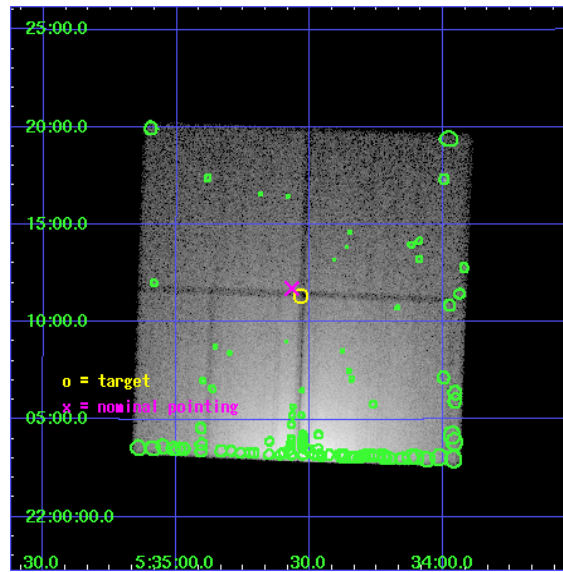
L2 Processing Date : Sep 11 2006

Contents

1	Front	2
2	OBI	3
2.1	OBI	3
2.1.1	Images	3
2.1.2	Bias	3
2.1.3	Parameters	4
2.1.4	Events	4
2.2	Compared Parameters	5
2.3	Aspect	6
2.4	Star Slots	9
2.4.1	Slot 3	9
2.4.2	Slot 4	10
2.4.3	Slot 5	11
2.4.4	Slot 6	12
2.4.5	Slot 7	13
2.5	FID Slots	14
2.5.1	Slot 0	14
2.5.2	Slot 1	15
2.5.3	Slot 2	16
3	Point Sources	17
A	Summary	18
A.1	Status	18
A.2	Comments	18

1 Front

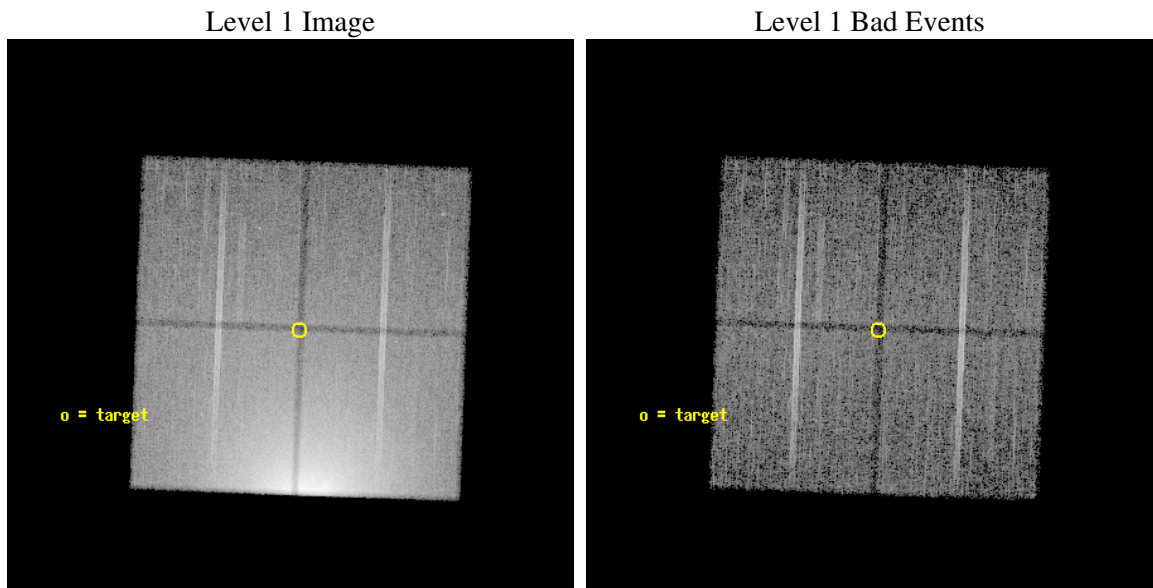
seq_num	500248
obs_id	2798
title	SEARCH FOR THE OUTER SHELL OF THE CRAB NEBULA
observer	Frederick Seward
object	CRAB NEBULA HALO
dtcycle	0
cycle	P
ra_targ	83.633333
dec_targ	22.189444
ra_nom	83.641970618572
dec_nom	22.195397705181
roll_nom	272.12814819764
revision	2
ontime	20246.099961072
liveltime	19981.569760119
ontime0	20246.099961072
ontime1	20246.099961072
ontime2	20246.099961072
ontime3	20246.099961072
l2events	837024



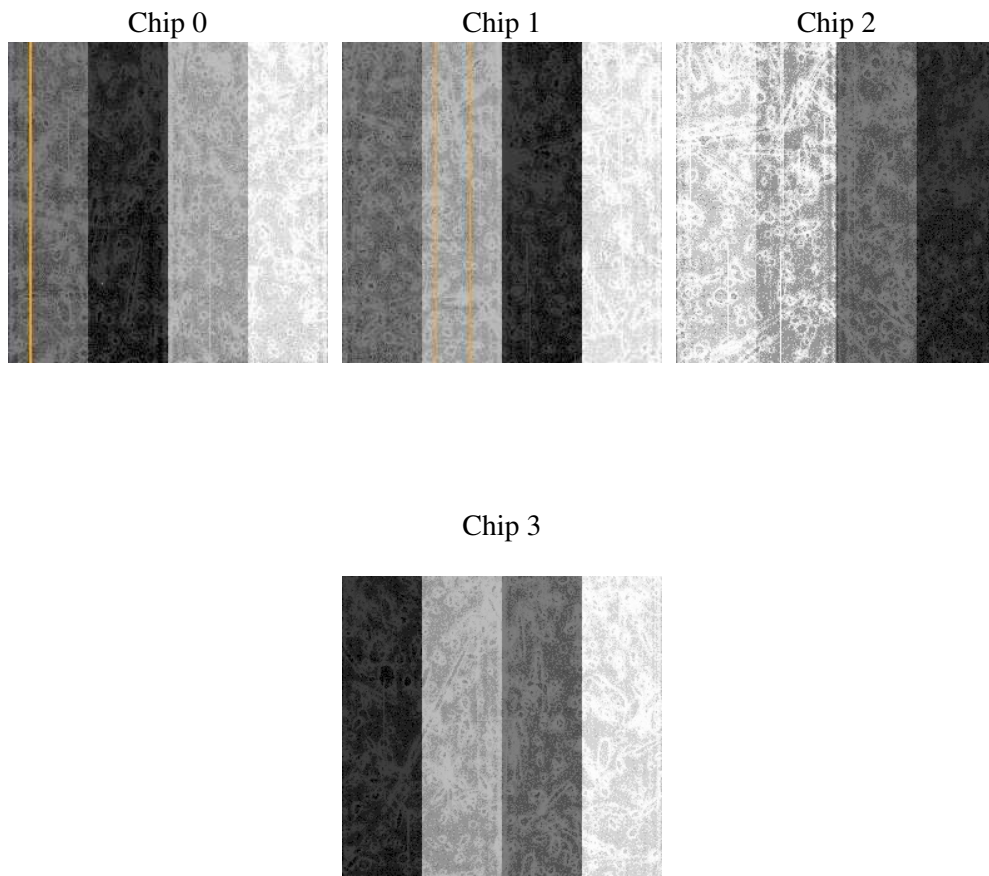
2 OBI

2.1 OBI

2.1.1 Images



2.1.2 Bias



2.1.3 Parameters

obi_num	2
ascdsver	7.6.8.1
caldbver	3.2.3
date	2006-09-11T06:45:48
revision	2

sched_exp_time	20000.000000
ontime	20250.02592361
ontime0	20250.025943518
ontime1	20250.02592361
ontime2	20250.025943518
ontime3	20250.02592361
l1events	1360306

2.1.4 Events

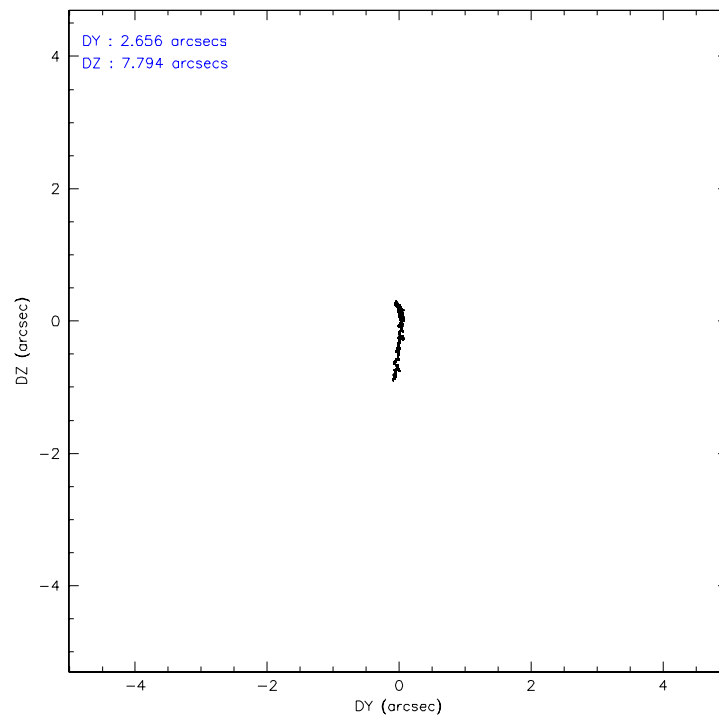
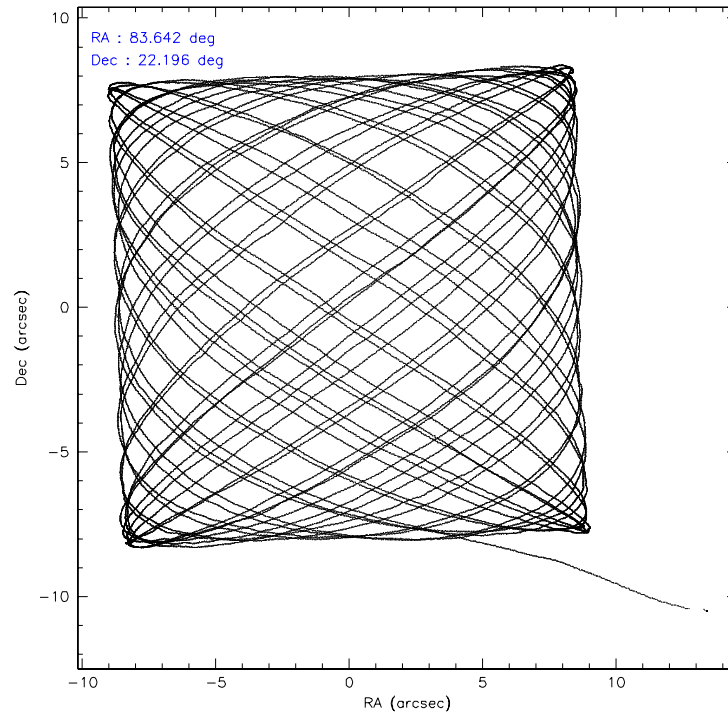
	ccd 0	ccd 1	ccd 2	ccd 3
level 1 events	548969	172928	458639	179770
rejected events	112093	107216	120916	117834
rejected %	20%	62%	26%	65%

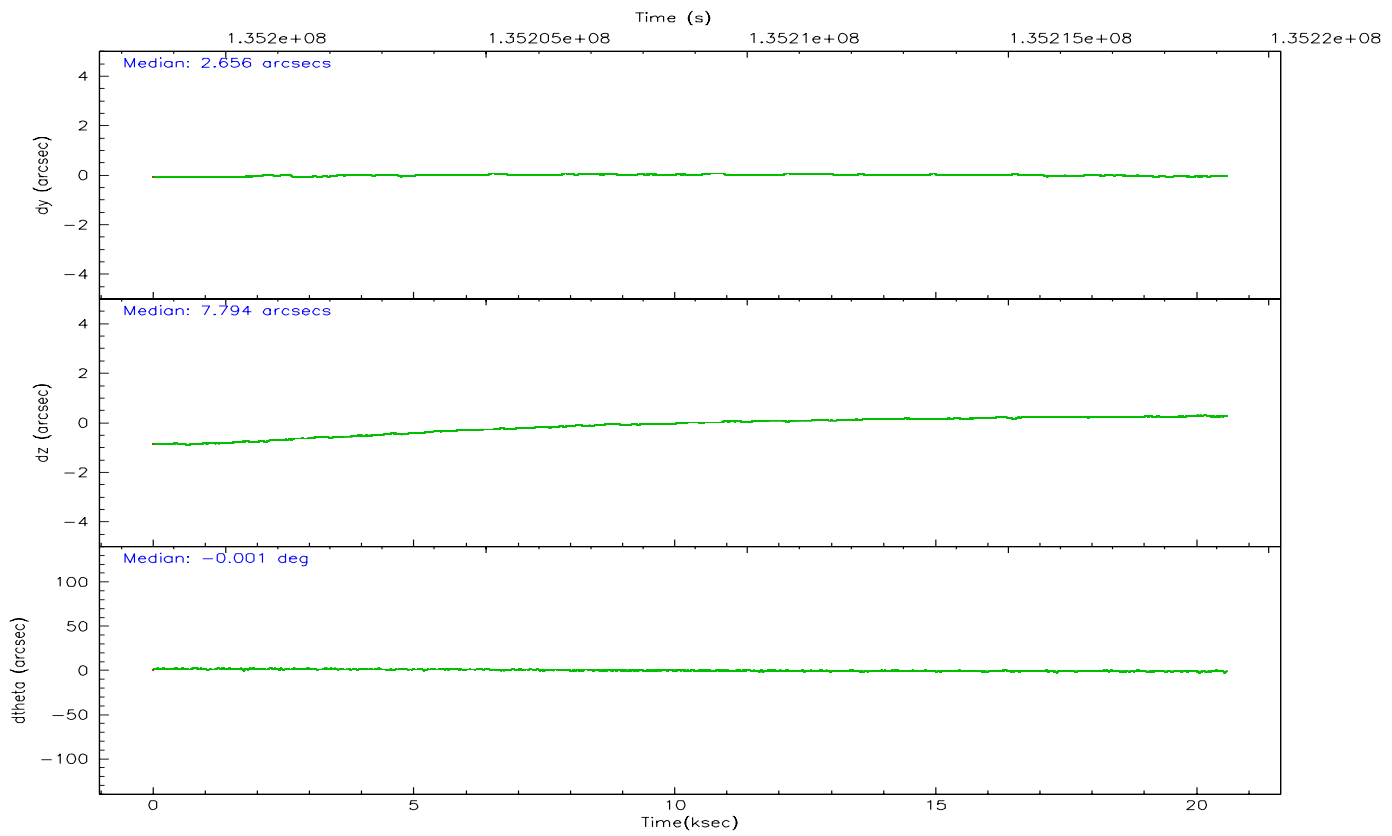
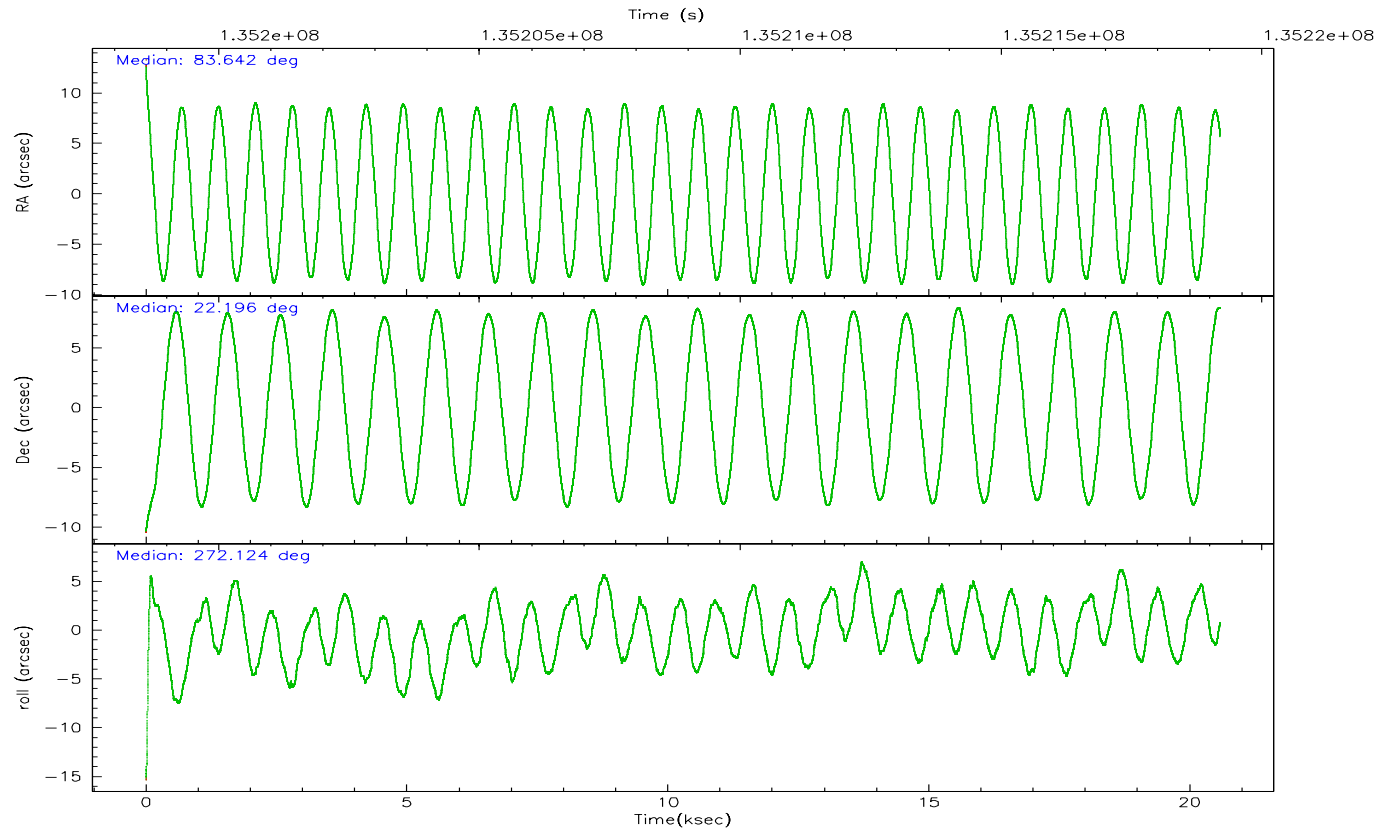
	ccd 0	ccd 1	ccd 2	ccd 3
grade 0 events	350777	47463	271179	45168
	63%	27%	59%	25%
grade 1 events	1402	208	1042	214
	0%	0%	0%	0%
grade 2 events	45203	8051	35179	7567
	8%	4%	7%	4%
grade 3 events	14229	2966	10860	2745
	2%	1%	2%	1%
grade 4 events	14103	3020	10659	2663
	2%	1%	2%	1%
grade 5 events	6118	5457	5613	5440
	1%	3%	1%	3%
grade 6 events	12634	4221	9894	3800
	2%	2%	2%	2%
grade 7 events	104503	101542	114213	112173
	19%	58%	24%	62%

2.2 Compared Parameters

Parameter	Planned	Actual	Parameter	Planned	Actual
Instrument	ACIS	ACIS	Obspar format version number	6	6
Detector	ACIS-0123	ACIS-0123	Obspar file type	PREDICTED	ACTUAL
Grating	NONE	NONE	Obspar update status	NONE	UPDATED
Data mode	FAINT	FAINT	On-chip summing requested	N	N
Observation mode	POINTING	POINTING	Subarray requested	NONE	NONE
Pointing RA	83.626157	83.64197061857172	Alternating exposures requested	N	N
Pointing Dec	22.218573	22.19539770518073	Primary exposure time	0.000000	3.1
Pointing Roll	271.925448	272.1281481976394			
SIM focus pos (mm)	-0.782348	-0.7809083437167272			
SIM defocus (mm)	0	0.001439871863259334			
SIM translation stage pos (mm)	-233.592463	-233.5874344608287			
SIM translation stage offset (mm)	0	-0.005018542100998502			
Observation start time	135199196.184000	135198038.89914			
Observation start date	2002-04-14T19:18:52	2002-04-14T19:00:38			
Observation end time	135219196.184000	135220053.33754			
Observation end date	2002-04-15T00:52:12	2002-04-15T01:07:33			
Read mode	TIMED	TIMED			

2.3 Aspect



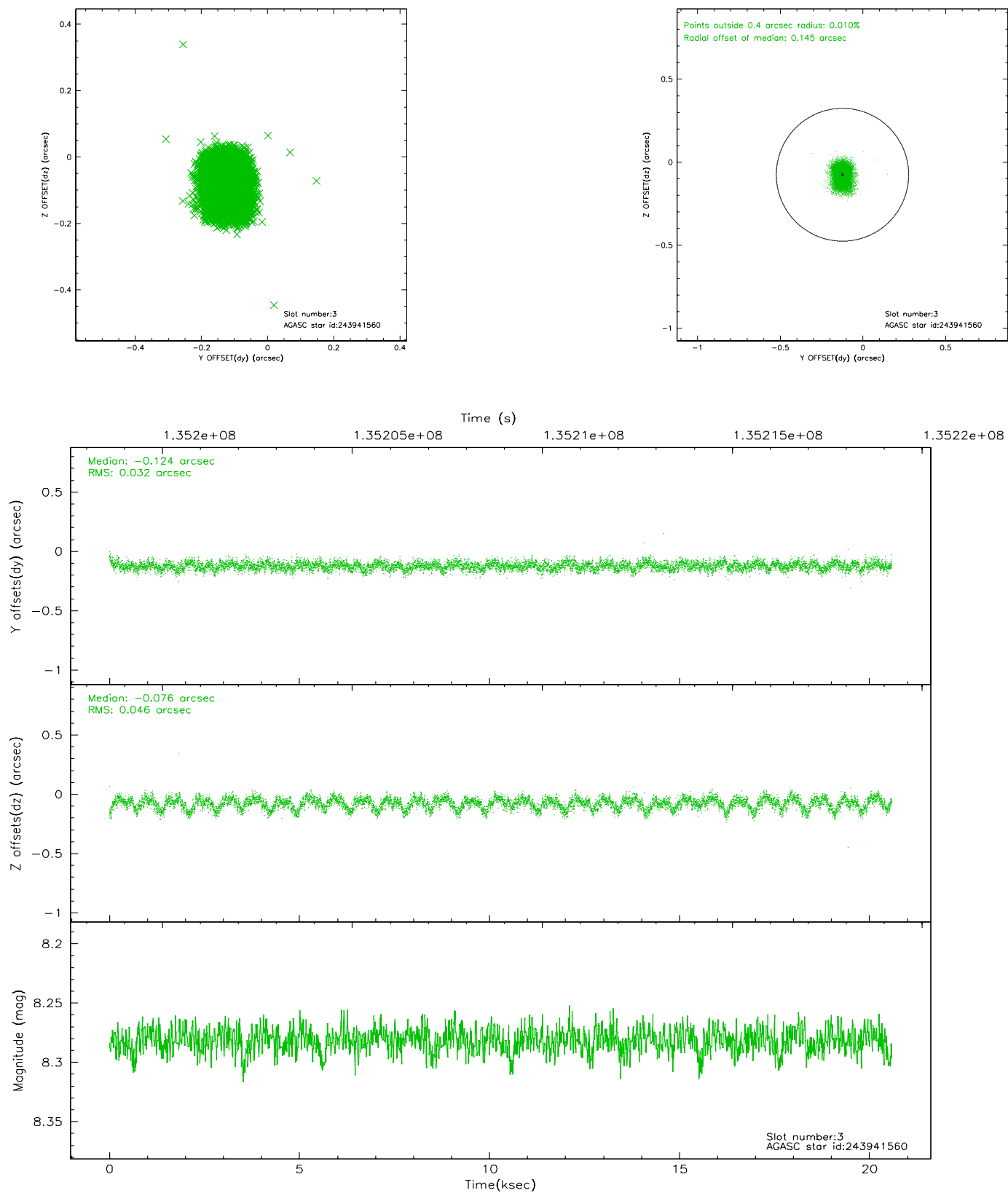


Slot Statistics

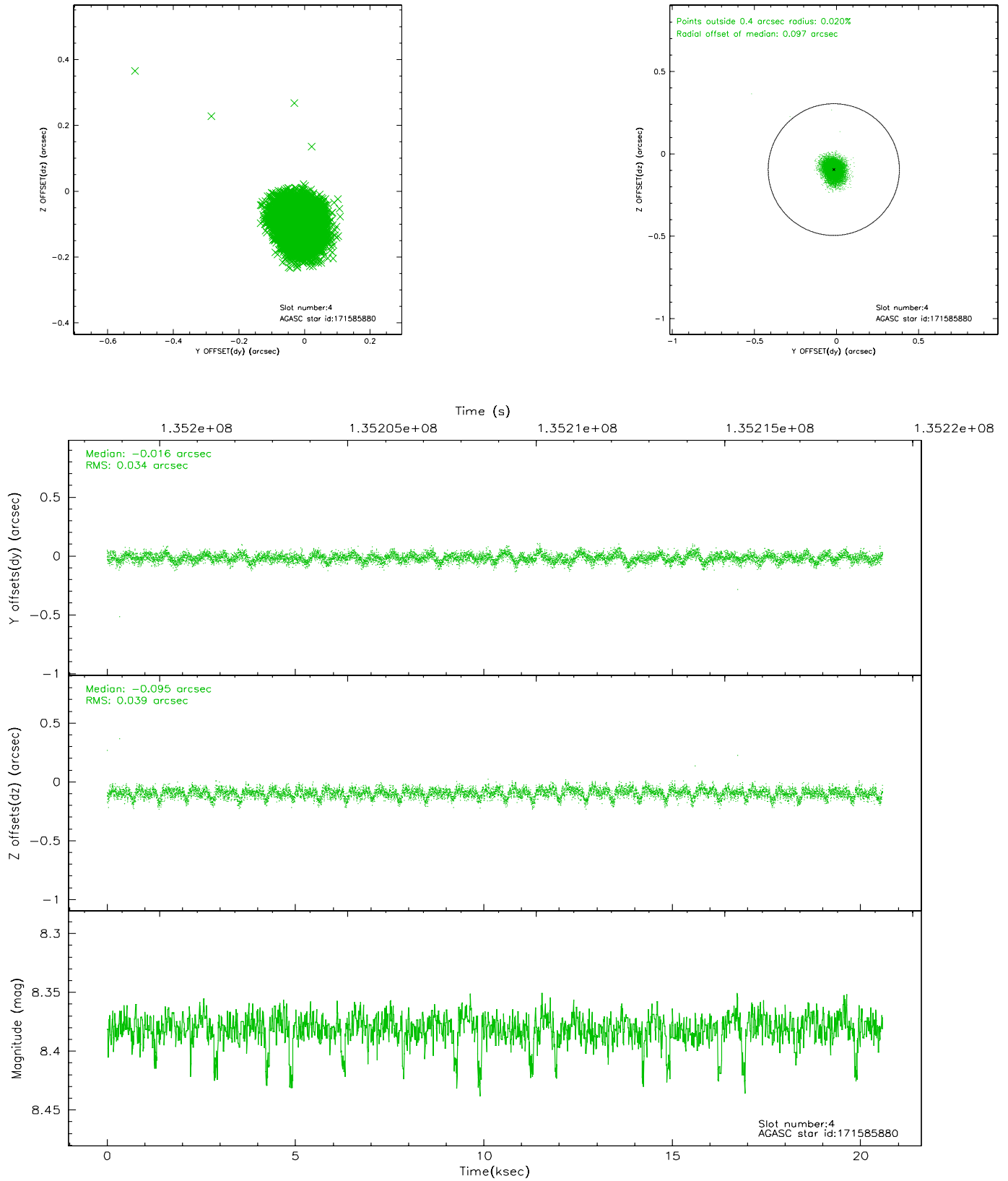
slot	status	id	mag	n_pts	med_dy	med_dz	dr1	dr2	ra	dec	mean_y	mean_z
0	FID	ACIS-I-1	7.24	5022	-0.029	0.073	0.018	0.033	0.000000	0.000000	937.11	-831.02
1	FID	ACIS-I-5	7.23	5020	-0.014	0.042	0.009	0.016	0.000000	0.000000	-1810.86	1066.39
2	FID	ACIS-I-6	7.26	5022	-0.048	-0.043	0.012	0.026	0.000000	0.000000	402.48	1710.98
3	GUIDE	243941560	8.28	10043	-0.124	-0.076	0.059	0.099	83.733264	22.568598	-1246.69	397.77
4	GUIDE	171585880	8.38	10041	-0.016	-0.095	0.054	0.090	83.676260	22.176319	158.43	161.54
5	GUIDE	171586032	8.93	10041	0.057	-0.002	0.064	0.104	83.950197	22.083225	523.12	1063.84
6	GUIDE	171586792	9.05	10038	0.029	0.038	0.073	0.117	83.501733	22.424168	-752.71	-389.11
7	GUIDE	171721904	9.21	10034	0.051	0.143	0.110	0.172	84.272676	22.116922	434.41	2142.74

2.4 Star Slots

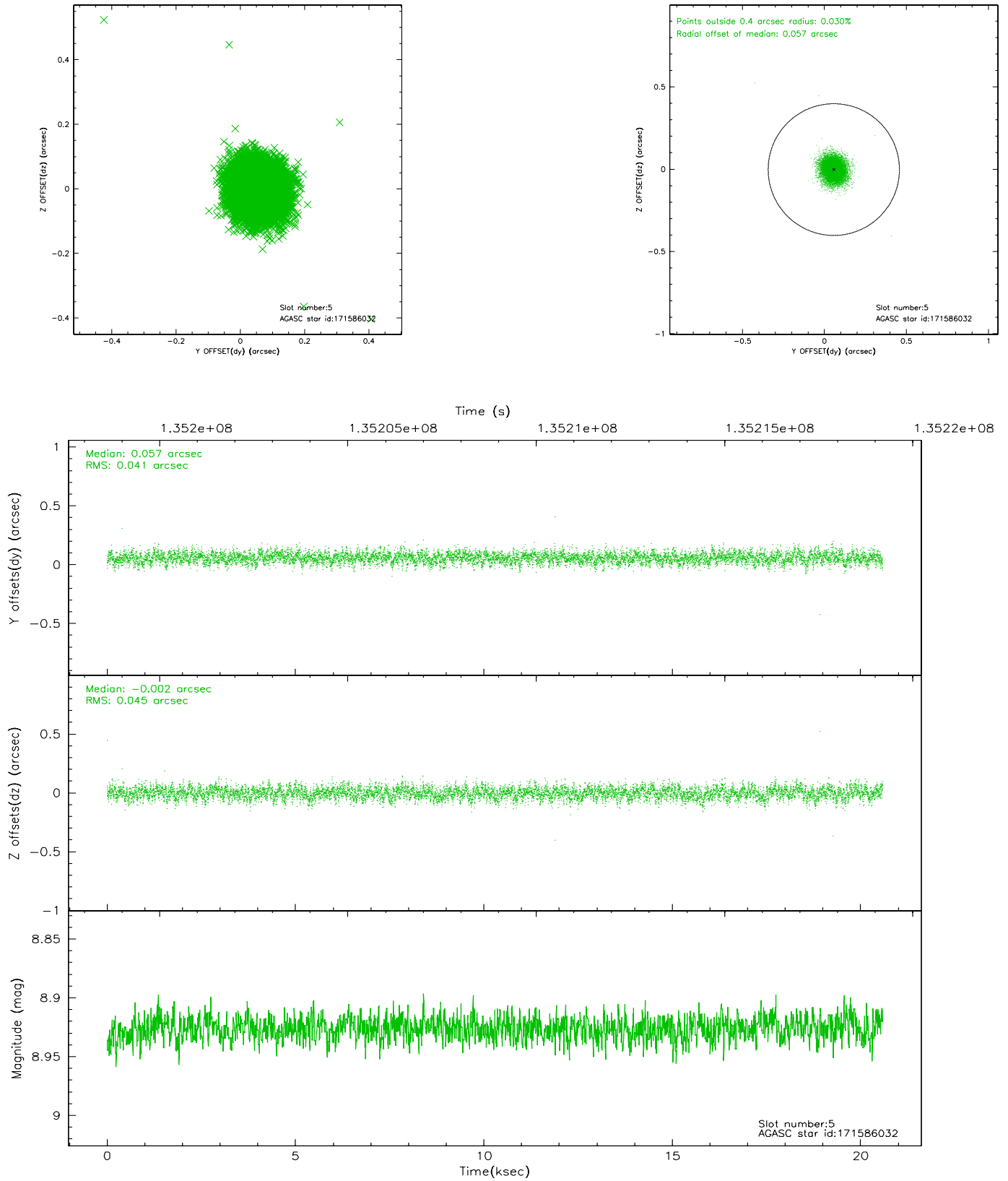
2.4.1 Slot 3



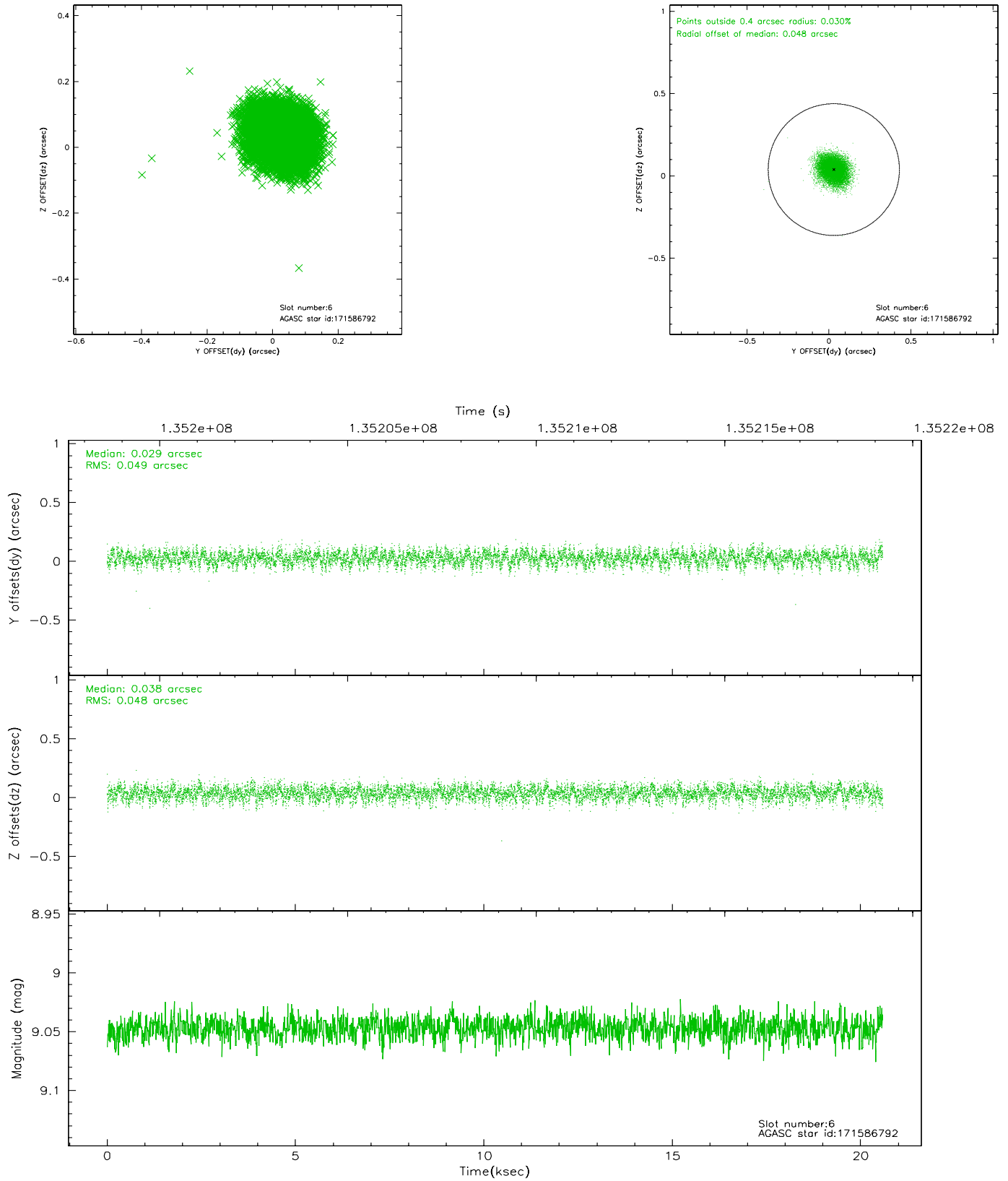
2.4.2 Slot 4



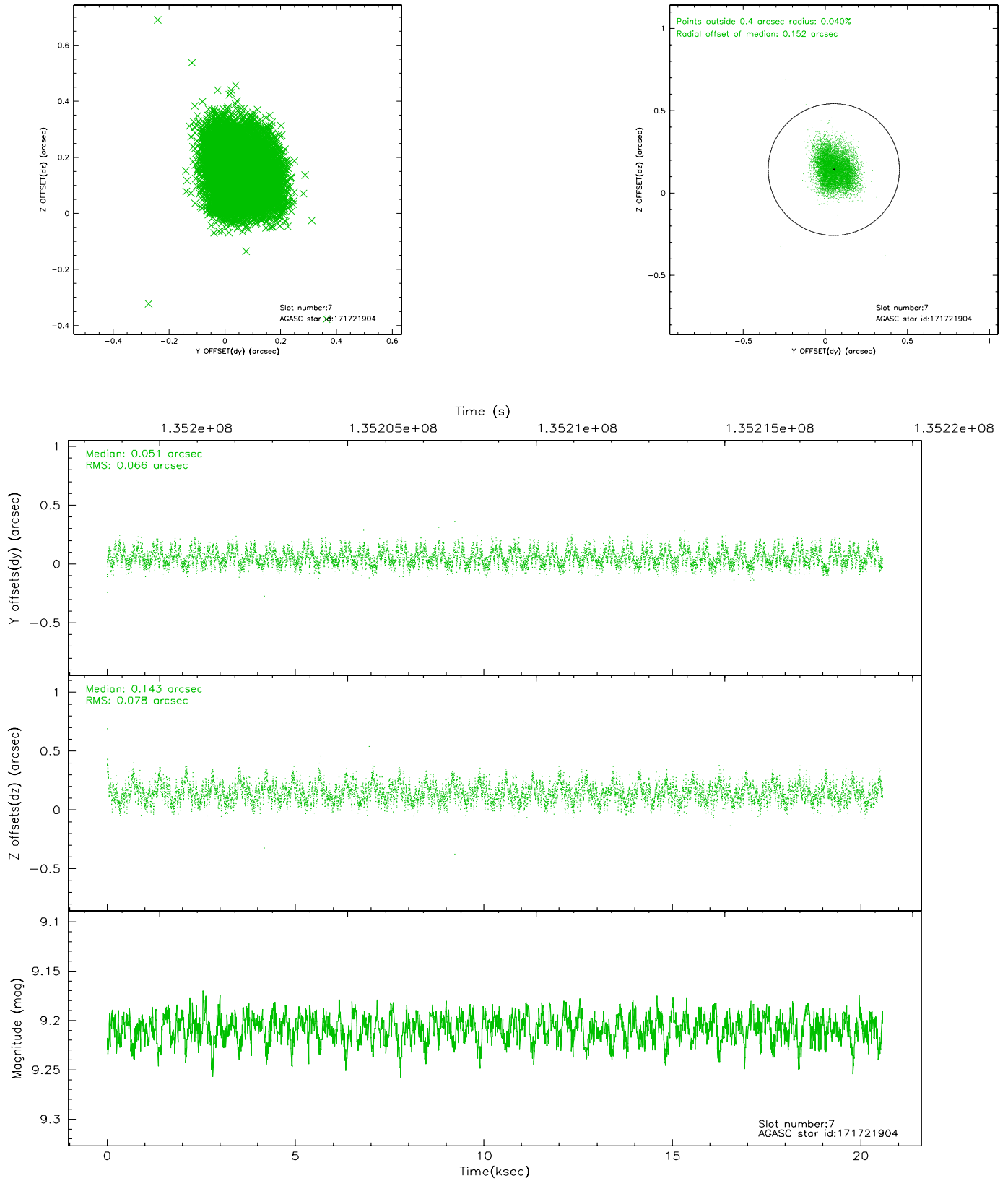
2.4.3 Slot 5



2.4.4 Slot 6

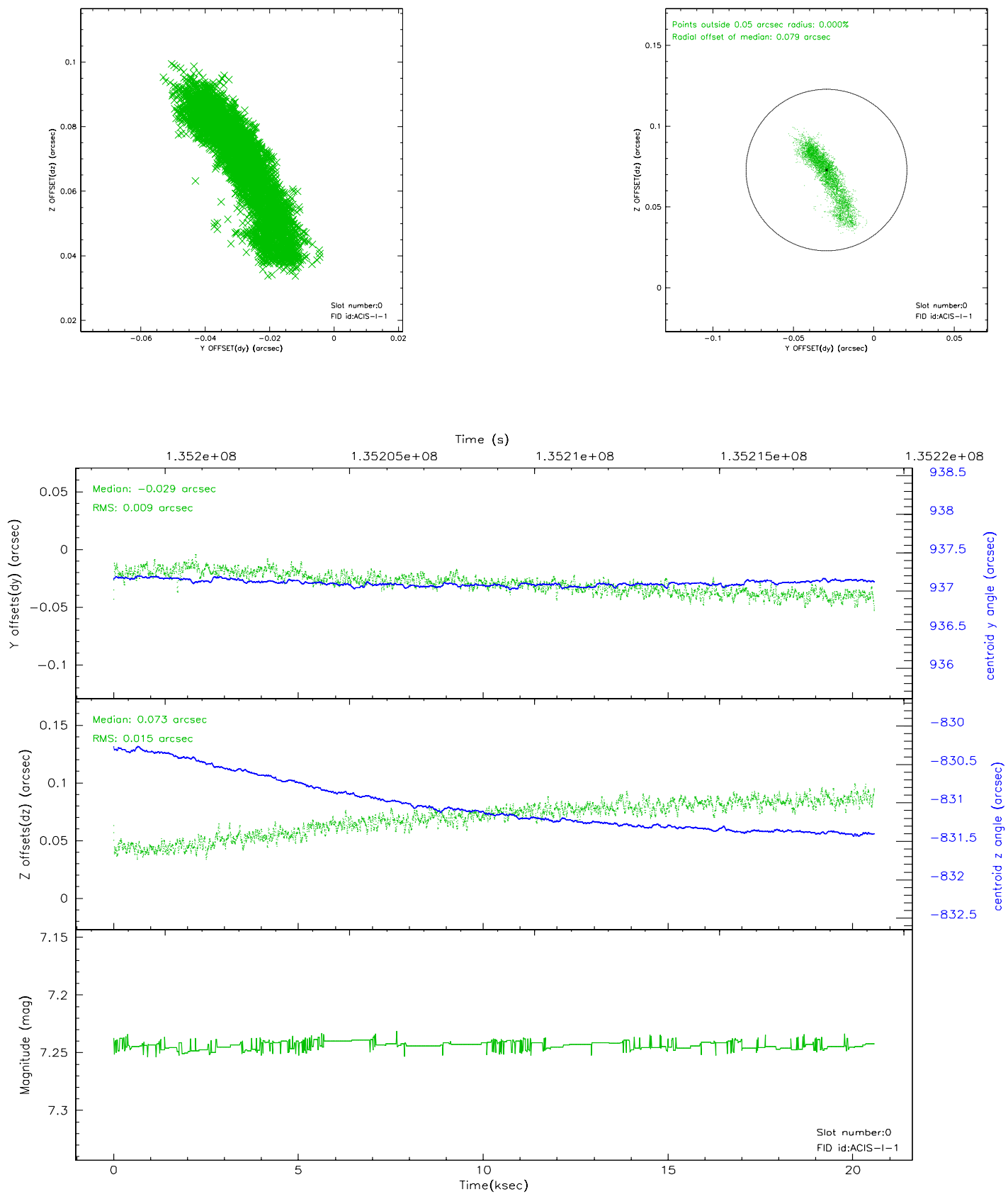


2.4.5 Slot 7

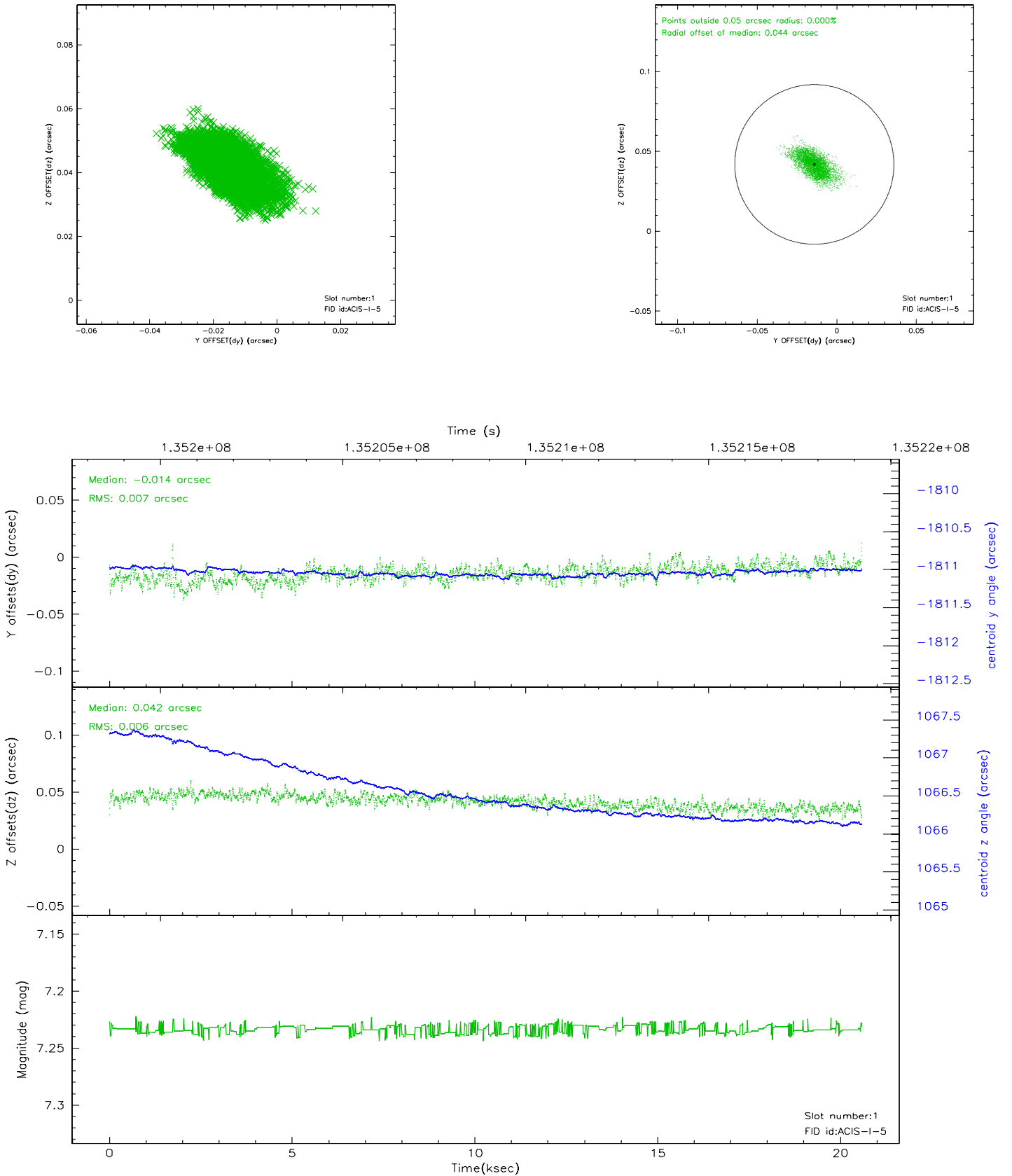


2.5 FID Slots

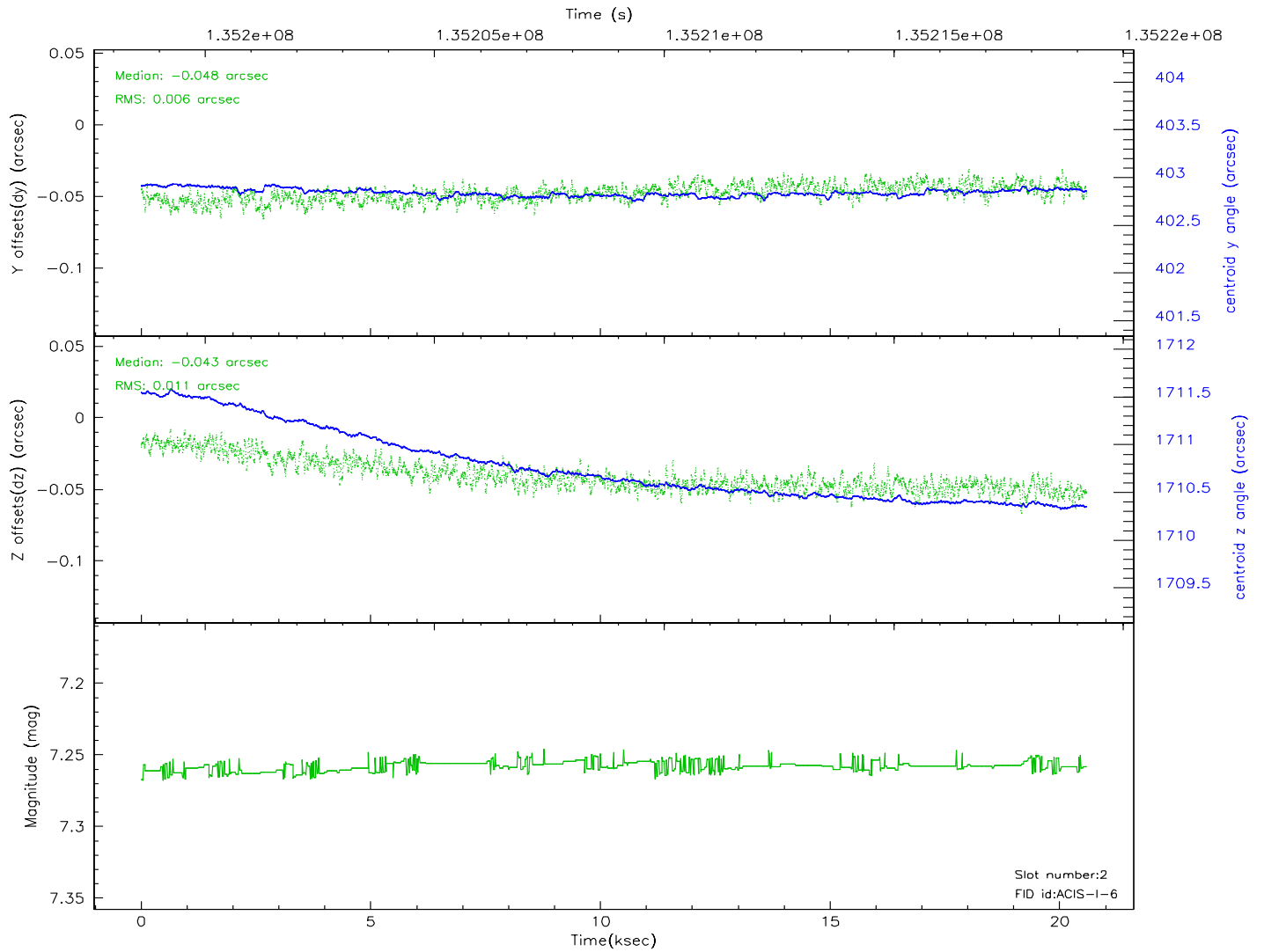
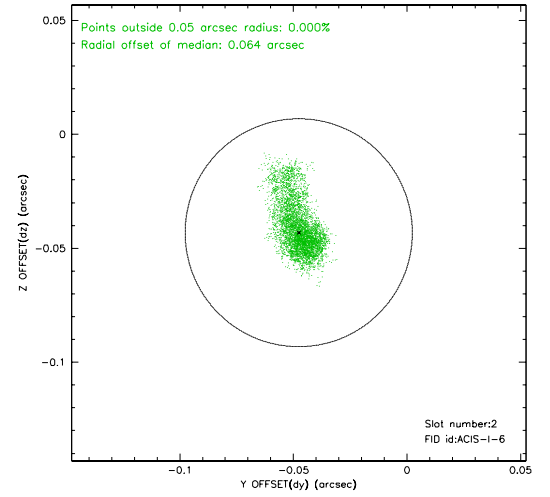
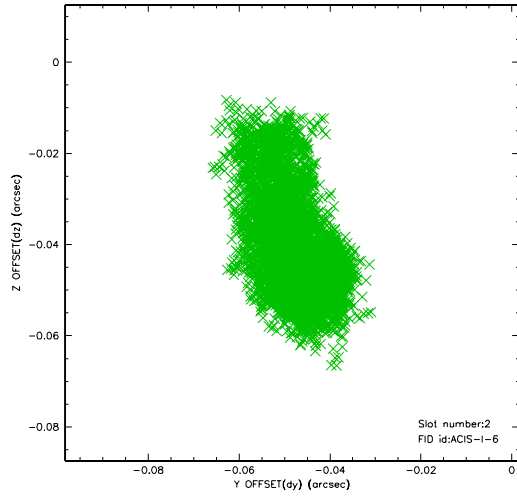
2.5.1 Slot 0



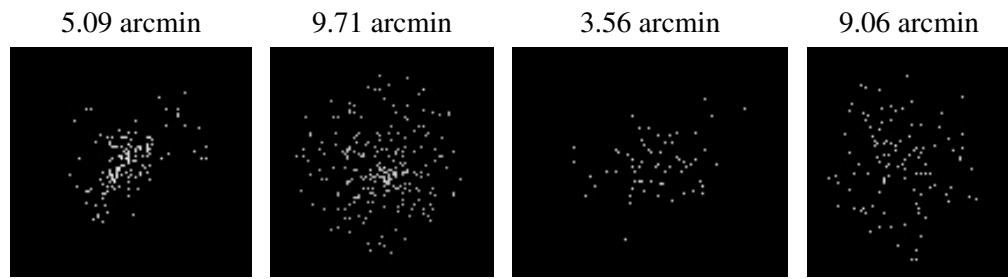
2.5.2 Slot 1



2.5.3 Slot 2



3 Point Sources



A Summary

A.1 Status

V&V Scientist	Jen Lauer
V&V Date (YYYY-MM-DD)	2006.09.11
V&V Edition	1
V&V Disposition and Status	OK
V&V Charge Time	20.246

A.2 Comments

Preferred roll 270 degrees. Actual roll 272 degrees.

Target position falls on the chip boundary.