

V&V Reference Report

L2 ASCDS Version : 7.6.8.1

Observation 2756 - L2 Version 001
Chandra X-Ray Center

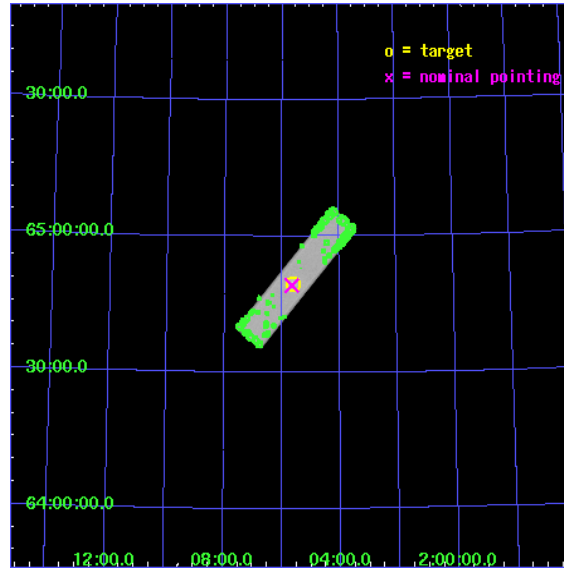
L2 Processing Date : Sep 2 2006

Contents

1	Front	2
2	OBI	3
2.1	OBI	3
2.1.1	Images	3
2.1.2	Parameters	4
2.1.3	Events	4
2.2	Compared Parameters	5
2.3	Aspect	6
2.4	Star Slots	9
2.4.1	Slot 3	9
2.4.2	Slot 4	10
2.4.3	Slot 5	11
2.4.4	Slot 6	12
2.4.5	Slot 7	13
2.5	FID Slots	14
2.5.1	Slot 0	14
2.5.2	Slot 1	15
2.5.3	Slot 2	16
3	Point Sources	17
A	Summary	18
A.1	Status	18
A.2	Comments	18

1 Front

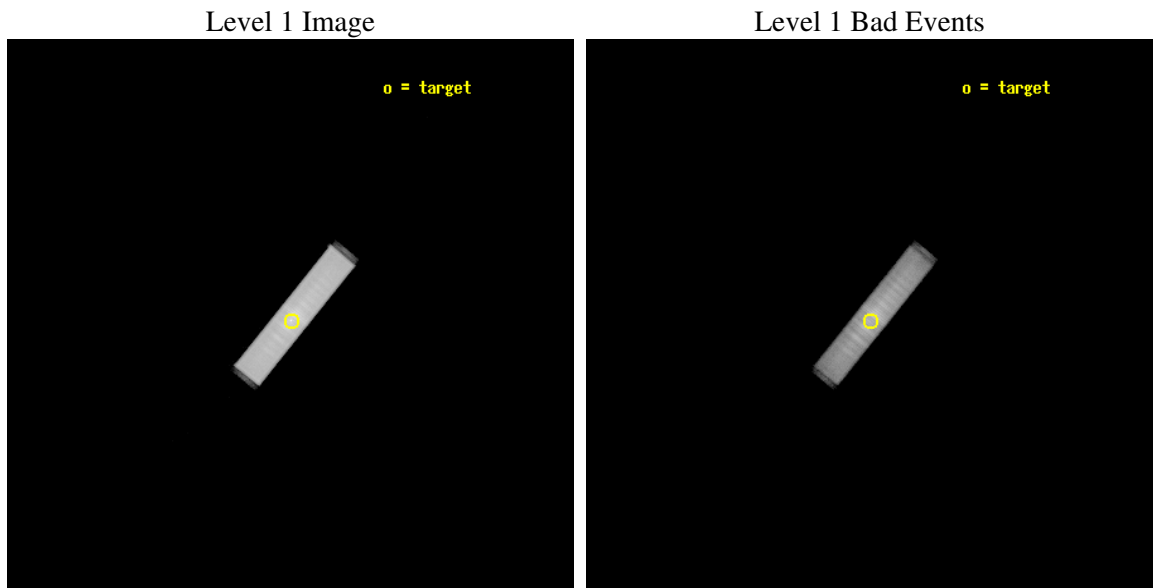
seq_num	500206
obs_id	2756
title	MEASUREMENT OF P-DOT IN 3C58
observer	Dr. Stephen Murray
object	3C58
ra_targ	31.408333
dec_targ	64.823333
ra_nom	31.414982102624
dec_nom	64.819636886156
roll_nom	308.95333572511
revision	2
ontime	24322.48223348
livetime	24246.083439819
l2events	686039



2 OBI

2.1 OBI

2.1.1 Images



2.1.2 Parameters

obi_num	0
ascdsver	7.6.8.1
caldbver	3.2.3
date	2006-09-02T18:23:44
revision	2

sched_exp_time	24500.000000
ontime	24672.775997654
l1events	1131486

2.1.3 Events

Level 1 Events

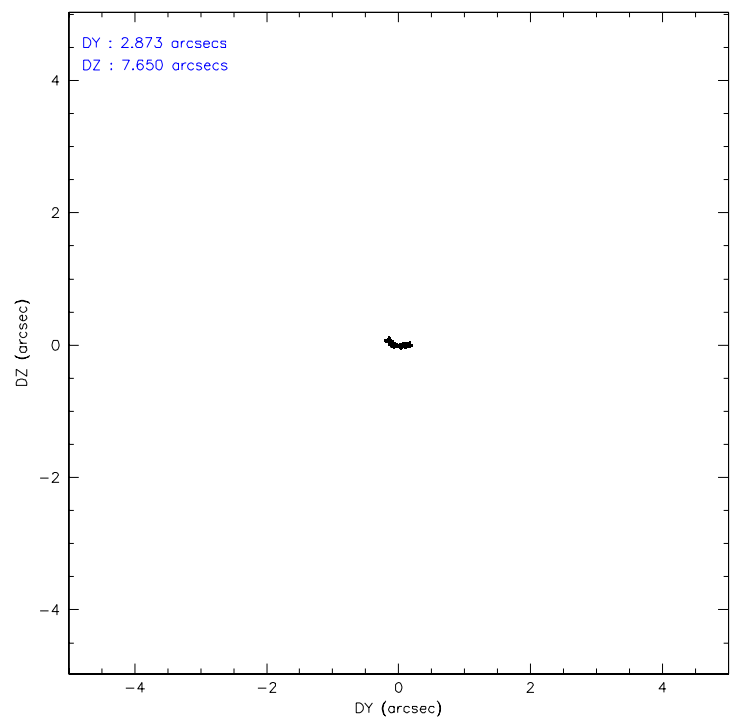
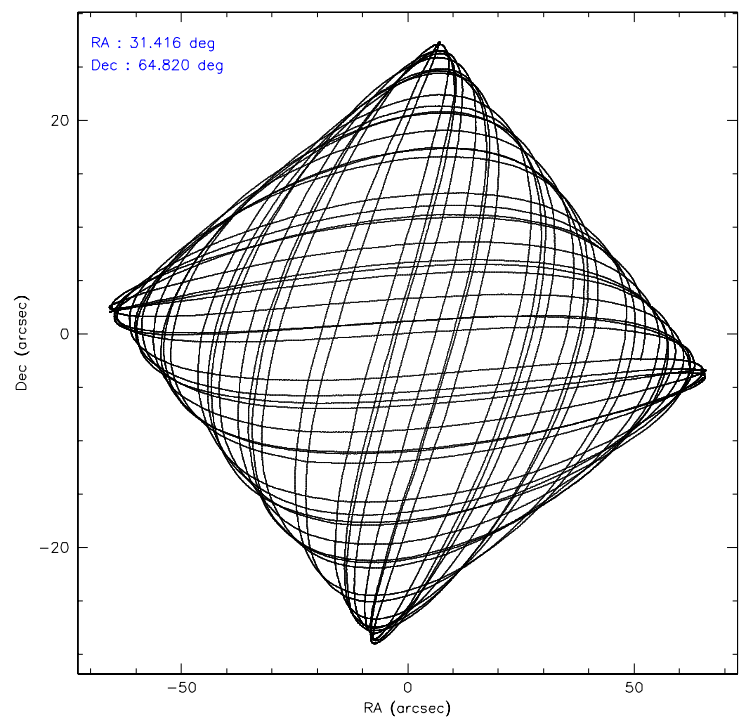
	segment 1	segment 2	segment 3
level 1 events	1559	1129921	6
rejected events	1470	386162	6
rejected %	94%	34%	100%

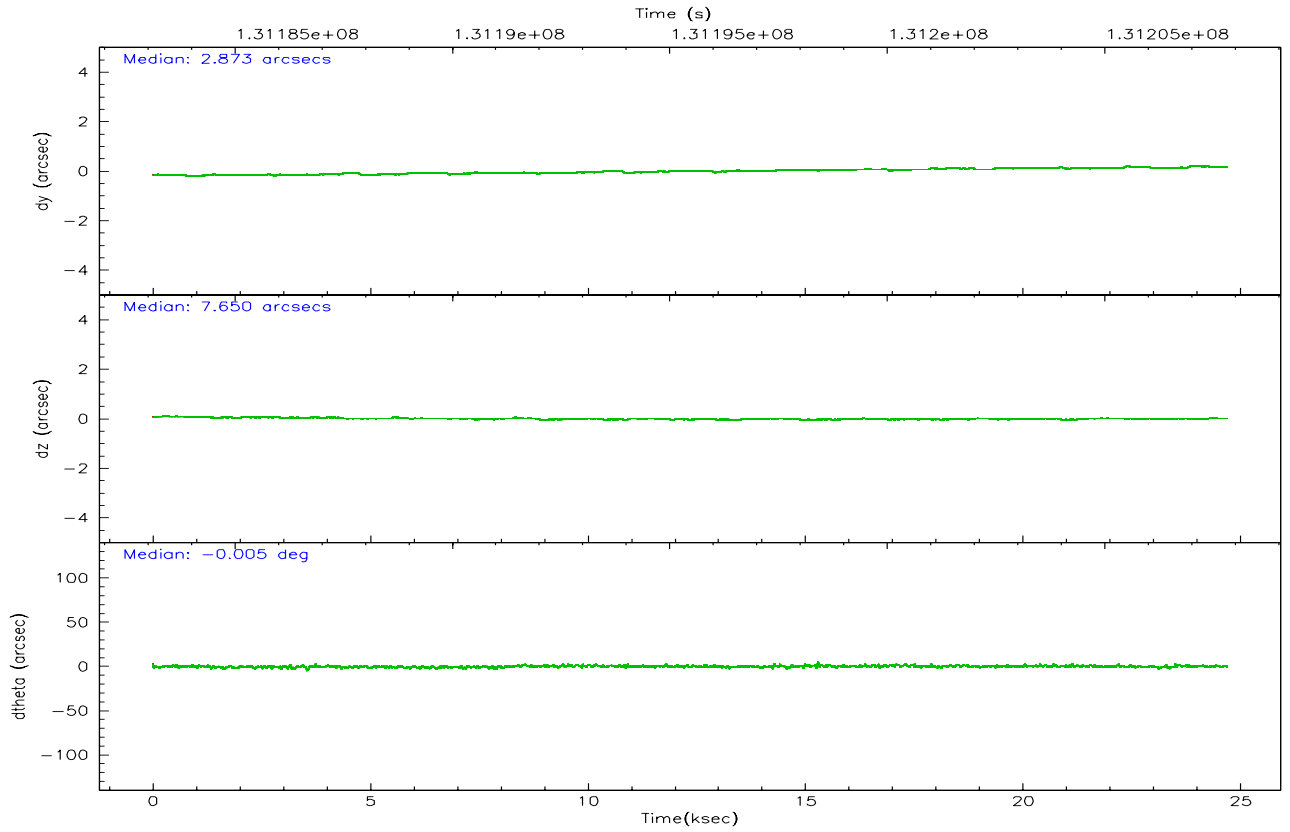
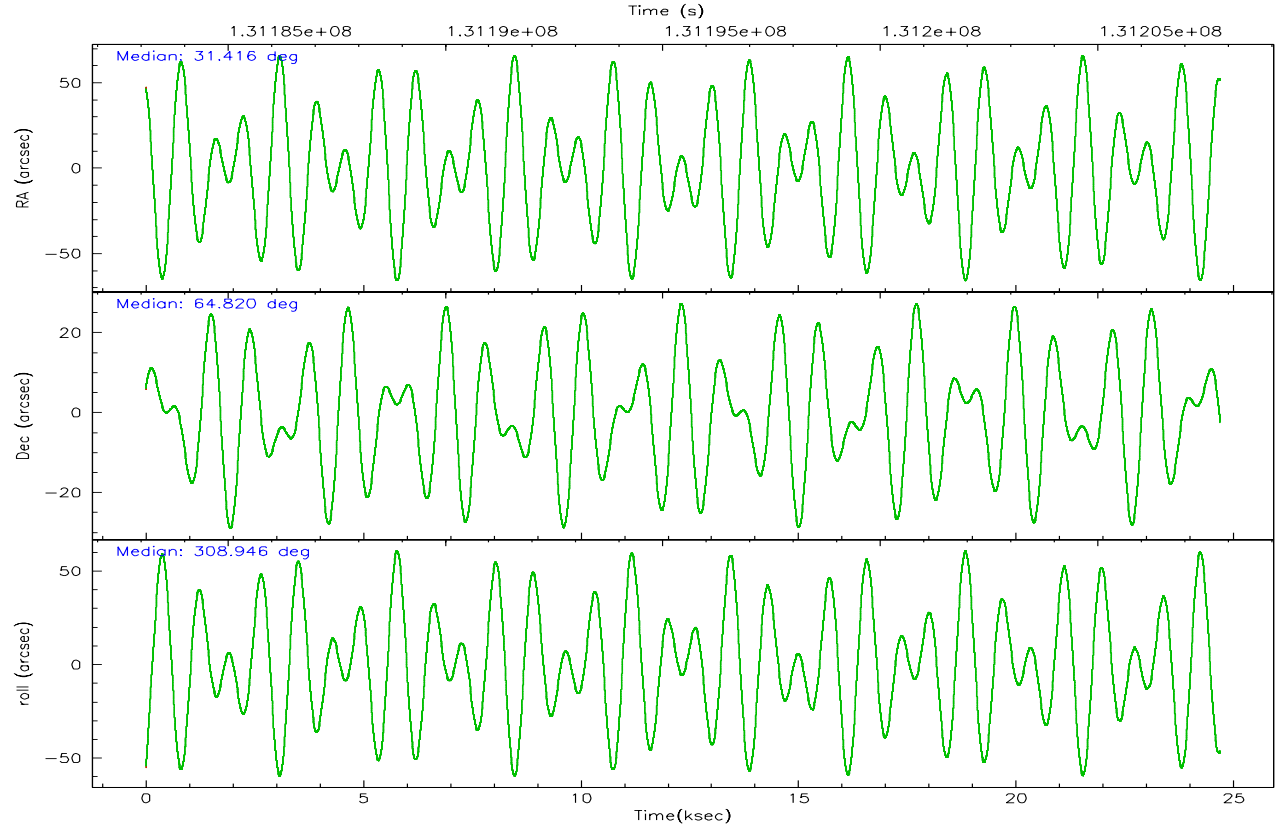
2.2 Compared Parameters

Parameter	Planned	Actual
Instrument	HRC	HRC
Detector	HRC-S	HRC-S
Grating	NONE	NONE
Data mode	OBSERVING	OBSERVING
Observation mode	POINTING	POINTING
Pointing RA	31.351128	31.41498210262443
Pointing Dec	64.828545	64.81963688615573
Pointing Roll	308.943802	308.953335725107
SIM focus pos (mm)	-1.529586	-1.523540733526241
SIM defocus (mm)	0.003750771043328743	0.009795905878055677
SIM translation stage pos (mm)	250.455976	250.466033080201
SIM translation stage offset (mm)	0	-0.01005468664627074
Observation start time	131183309.184000	131182861.07391
Observation start date	2002-02-27T07:47:25	2002-02-27T07:41:01
Observation end time	131207809.184000	131208709.52496
Observation end date	2002-02-27T14:35:45	2002-02-27T14:51:49

Parameter	Planned	Actual
Obspar format version number	6	6
Obspar file type	PREDICTED	ACTUAL
Obspar update status	NONE	UPDATED

2.3 Aspect



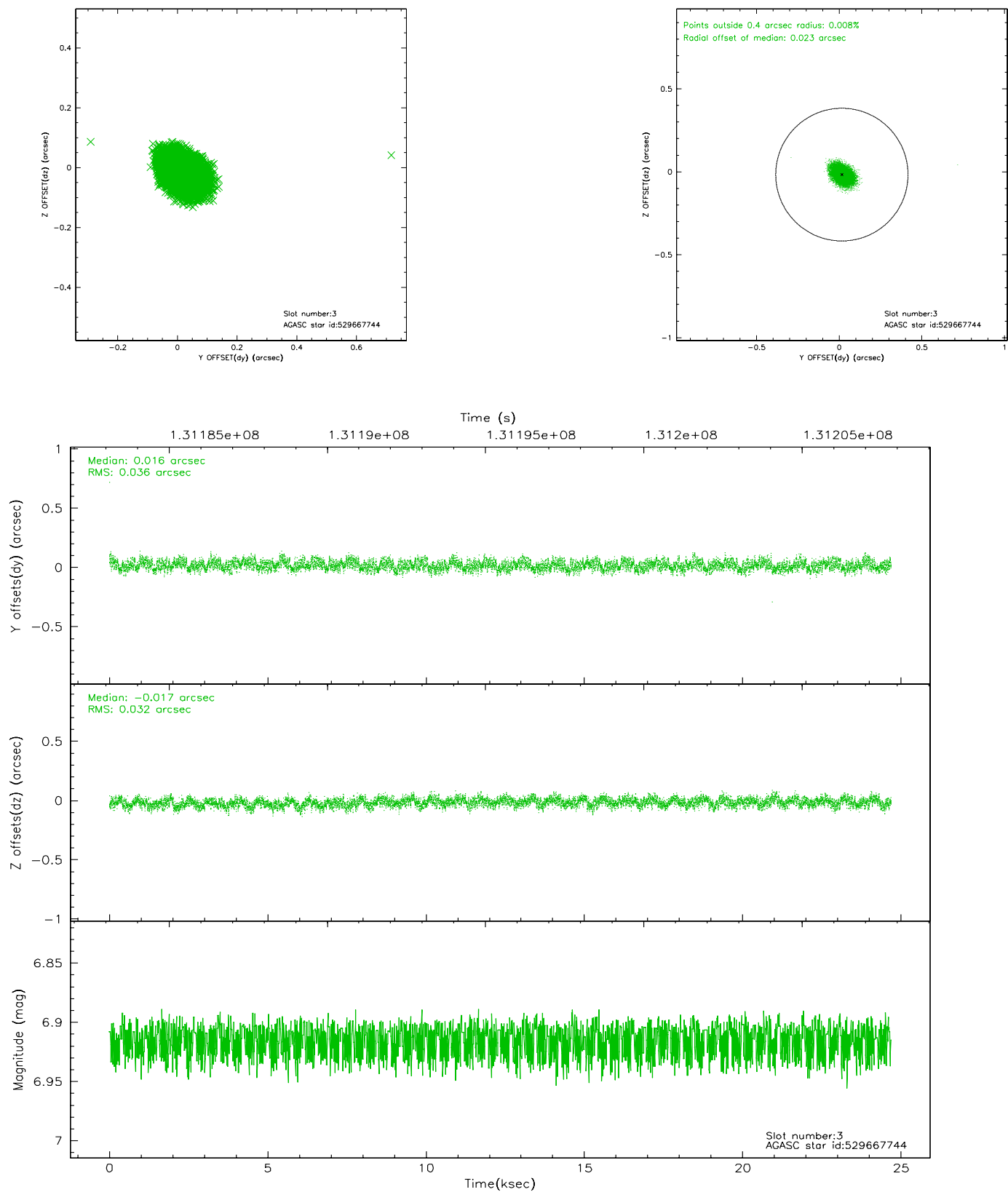


Slot Statistics

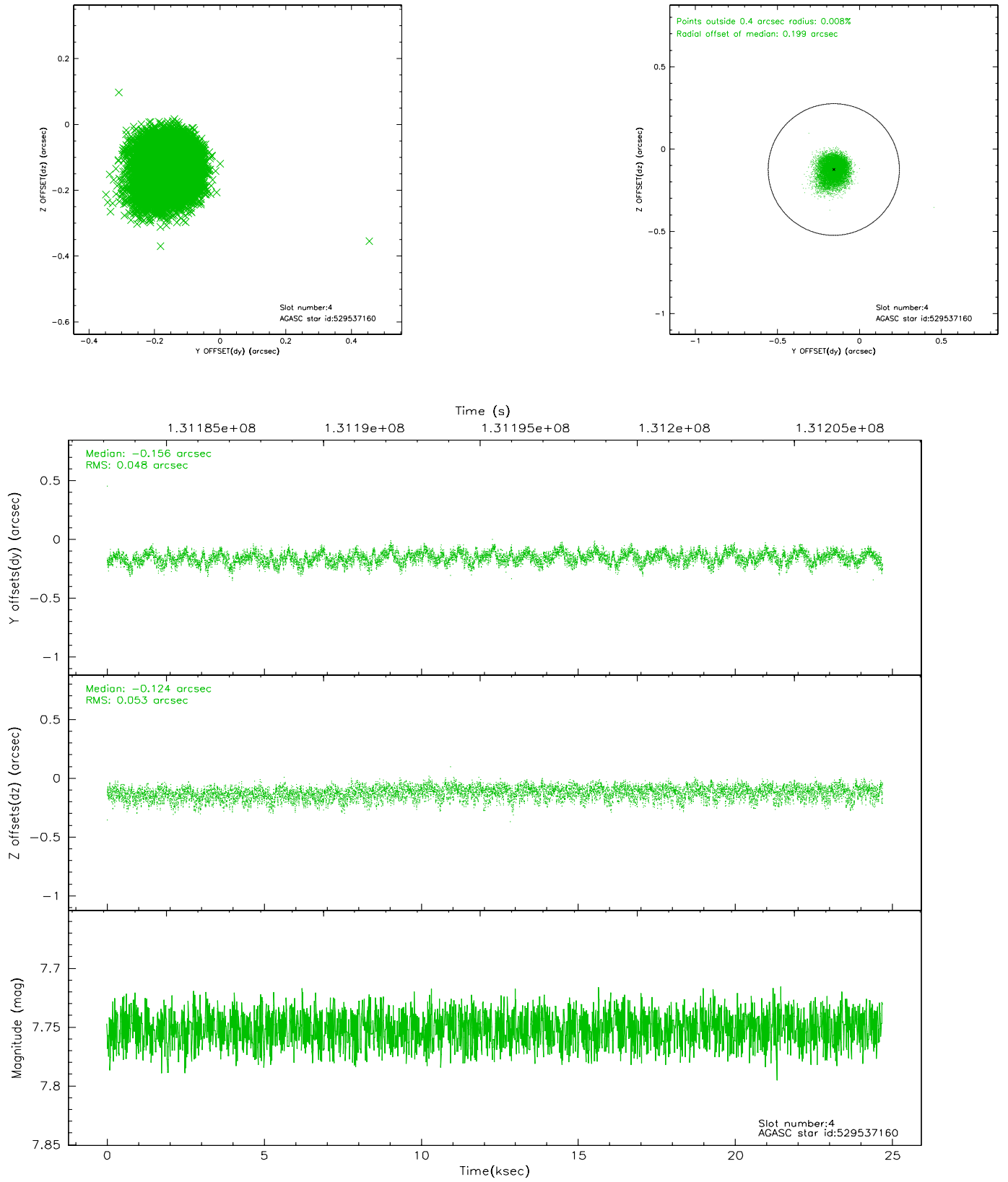
slot	status	id	mag	n_pts	med_dy	med_dz	dr1	dr2	ra	dec	mean_y	mean_z
0	FID	HRC-S-1	6.96	6022	0.106	-0.074	0.010	0.017	0.000000	0.000000	-1156.91	-456.20
1	FID	HRC-S-3	6.99	6022	0.136	-0.134	0.008	0.014	0.000000	0.000000	-1159.82	573.18
2	FID	HRC-S-4	6.92	6022	0.144	-0.090	0.011	0.022	0.000000	0.000000	1241.15	576.02
3	GUIDE	529667744	6.91	12042	0.016	-0.017	0.051	0.082	30.954689	64.237488	1262.76	-1818.96
4	GUIDE	529537160	7.75	12042	-0.156	-0.124	0.076	0.121	29.402071	64.782597	-1786.75	-2400.68
5	GUIDE	529665216	7.73	12042	0.028	0.026	0.061	0.097	32.189318	65.037431	207.70	1467.87
6	GUIDE	529667344	8.81	12038	0.012	-0.040	0.093	0.145	31.882421	65.482125	-1334.94	2097.94
7	GUIDE	529662328	9.21	12034	0.095	0.159	0.086	0.140	32.980339	64.683703	1955.55	1643.21

2.4 Star Slots

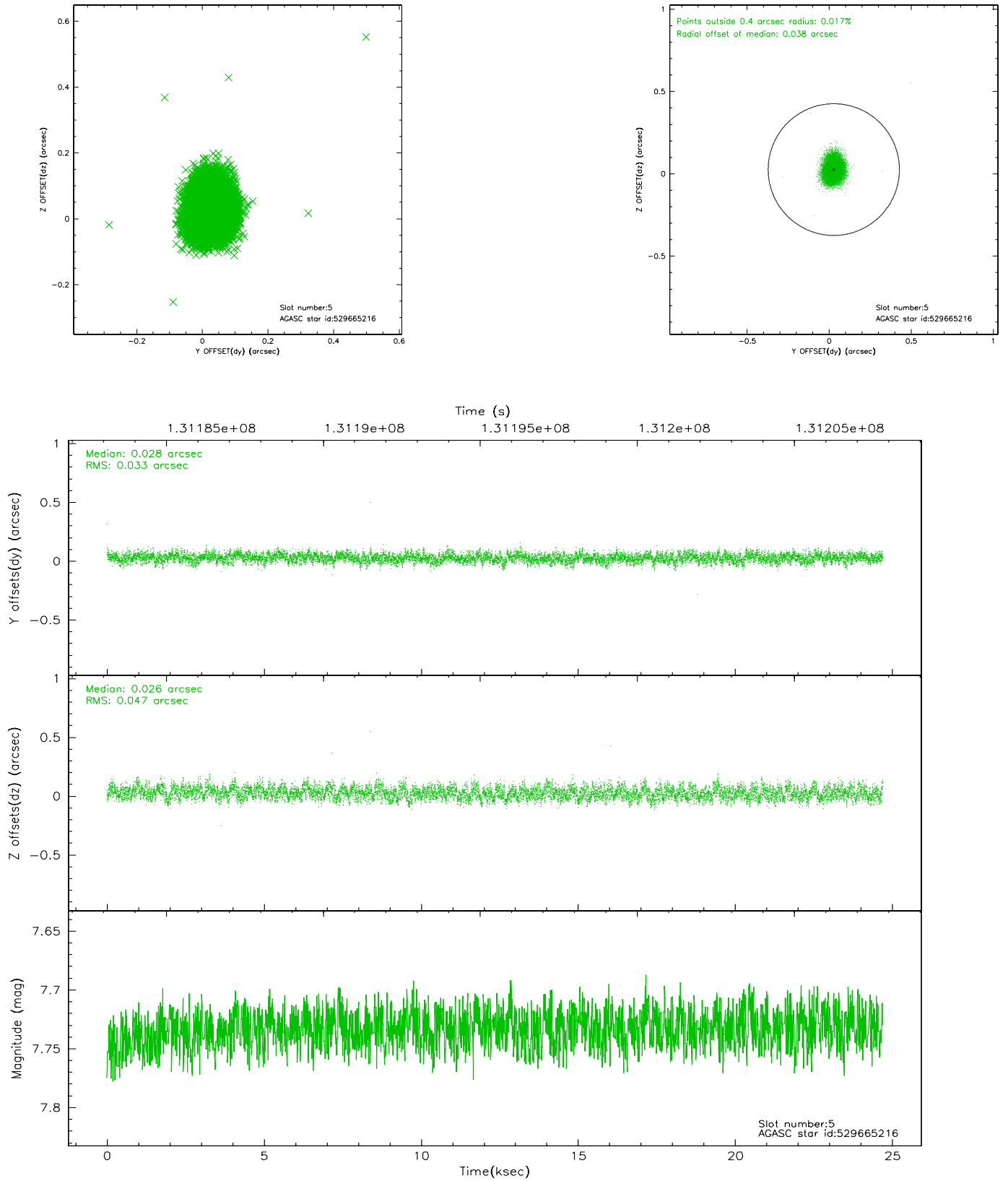
2.4.1 Slot 3



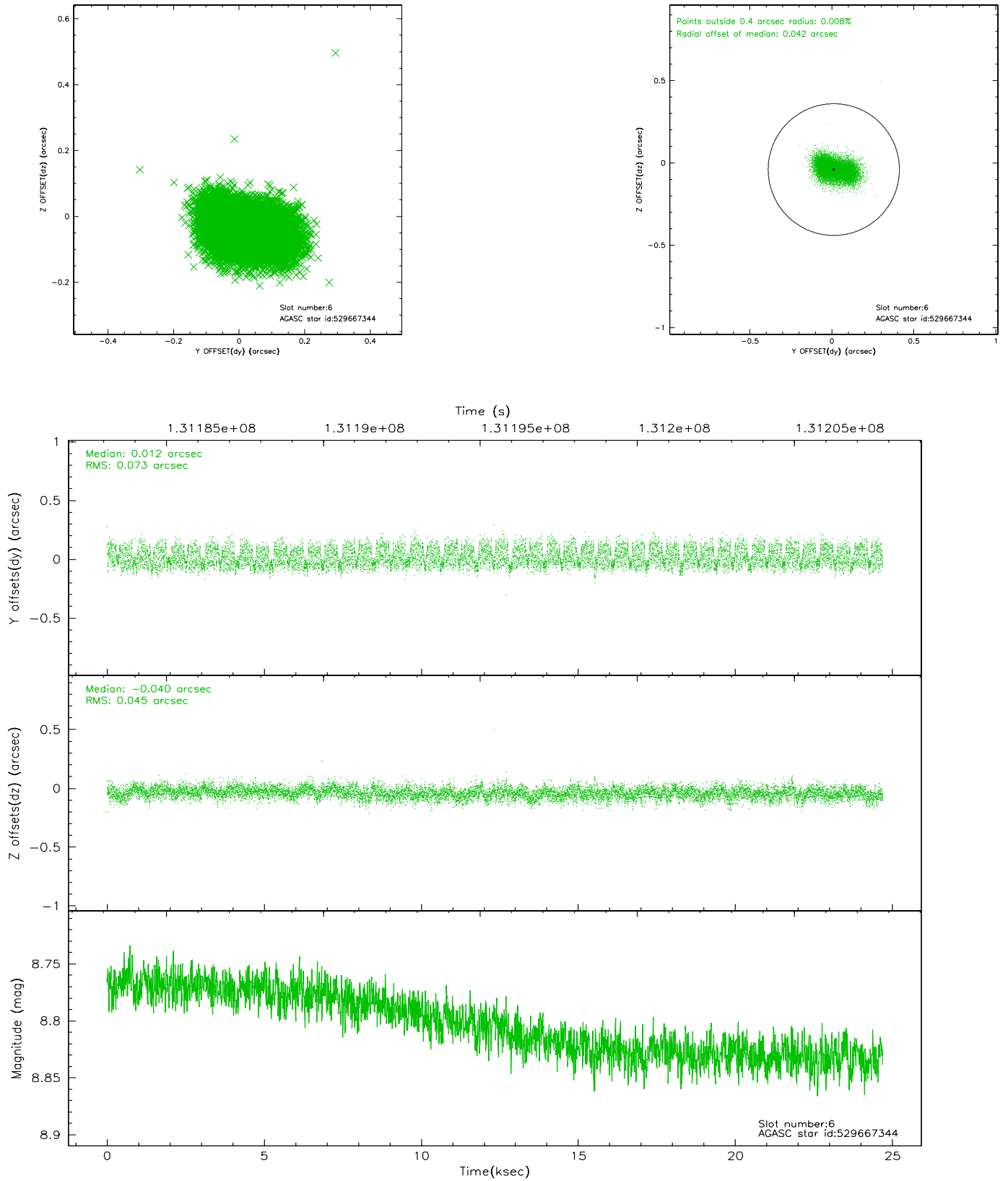
2.4.2 Slot 4



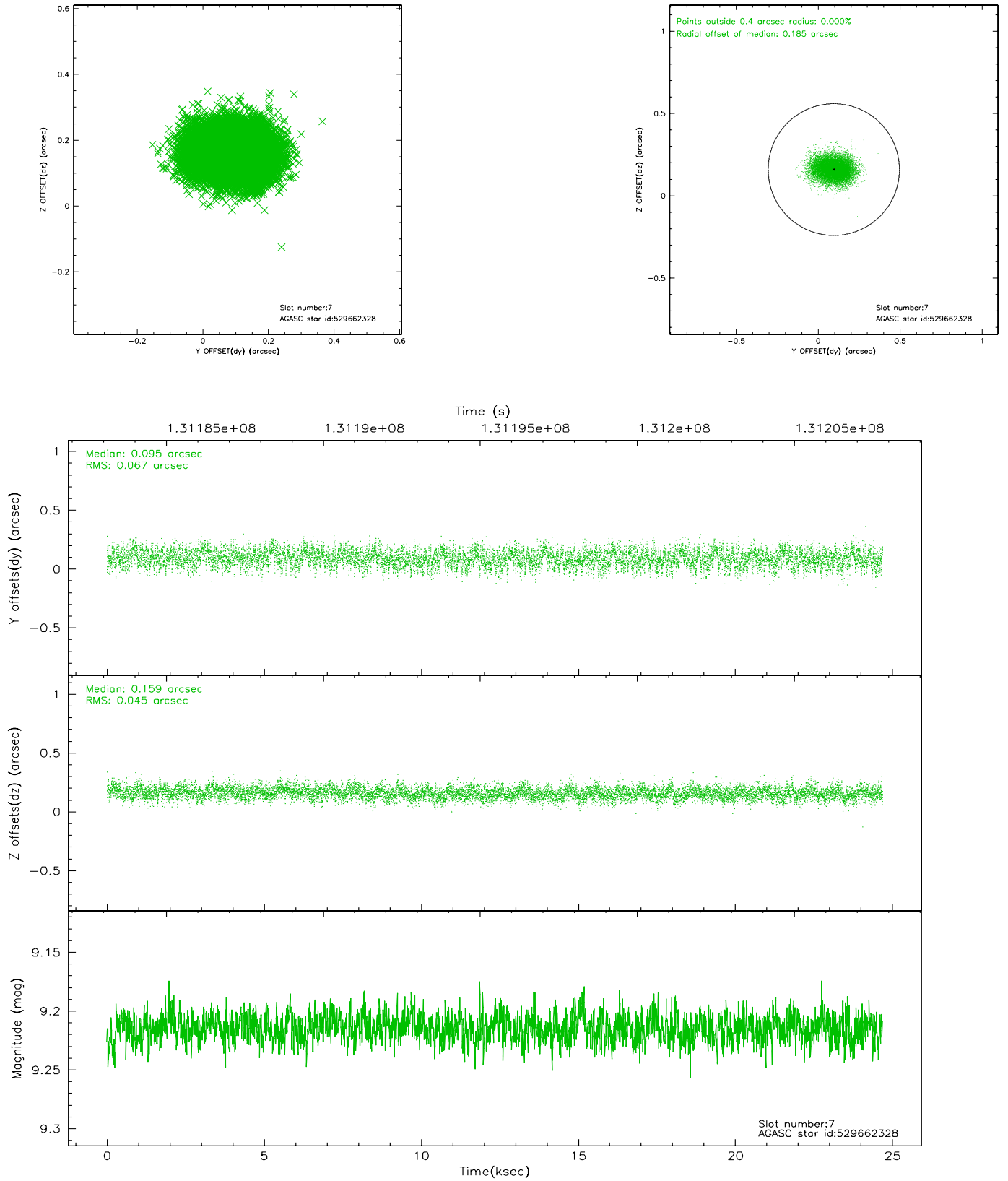
2.4.3 Slot 5



2.4.4 Slot 6

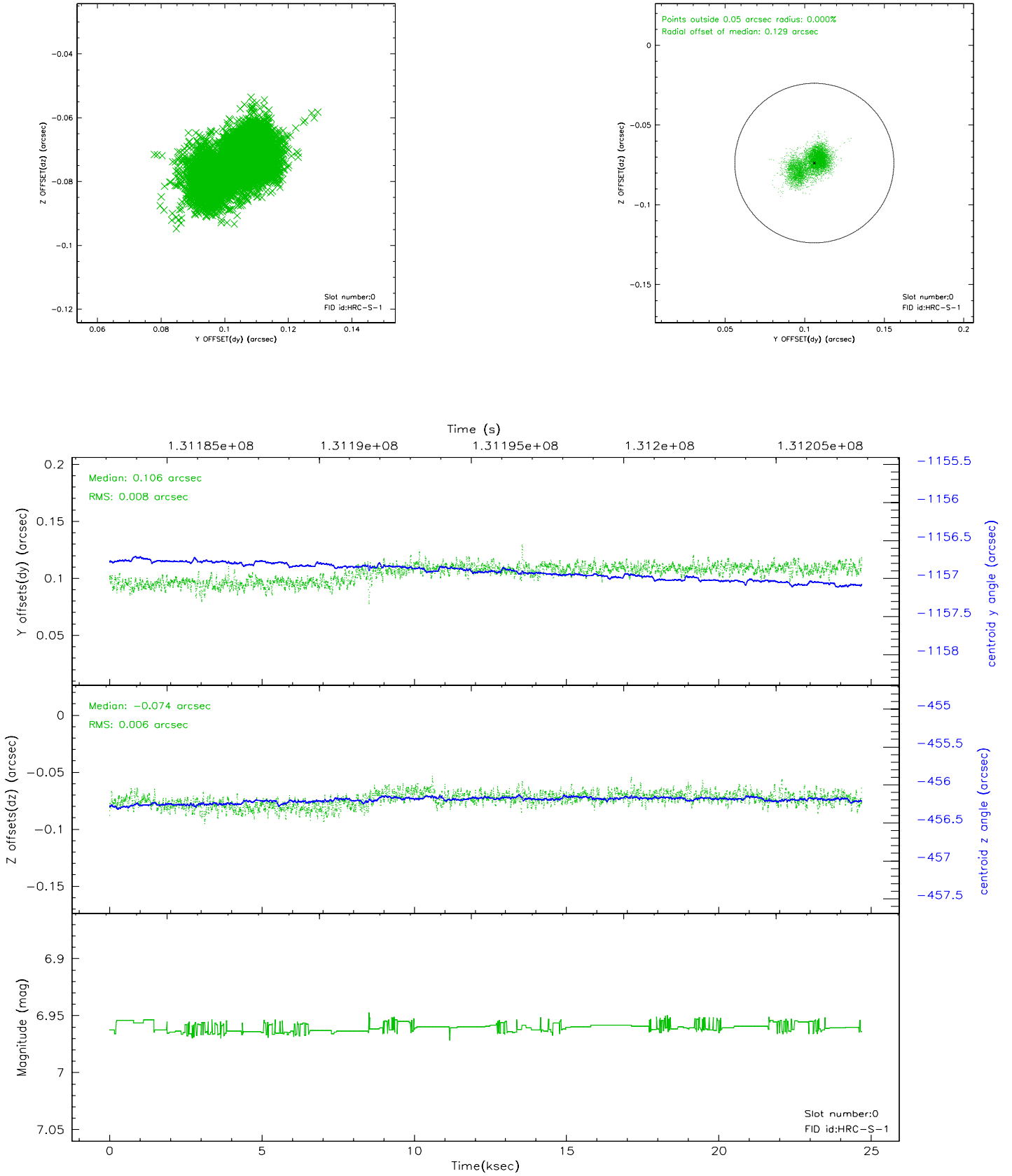


2.4.5 Slot 7

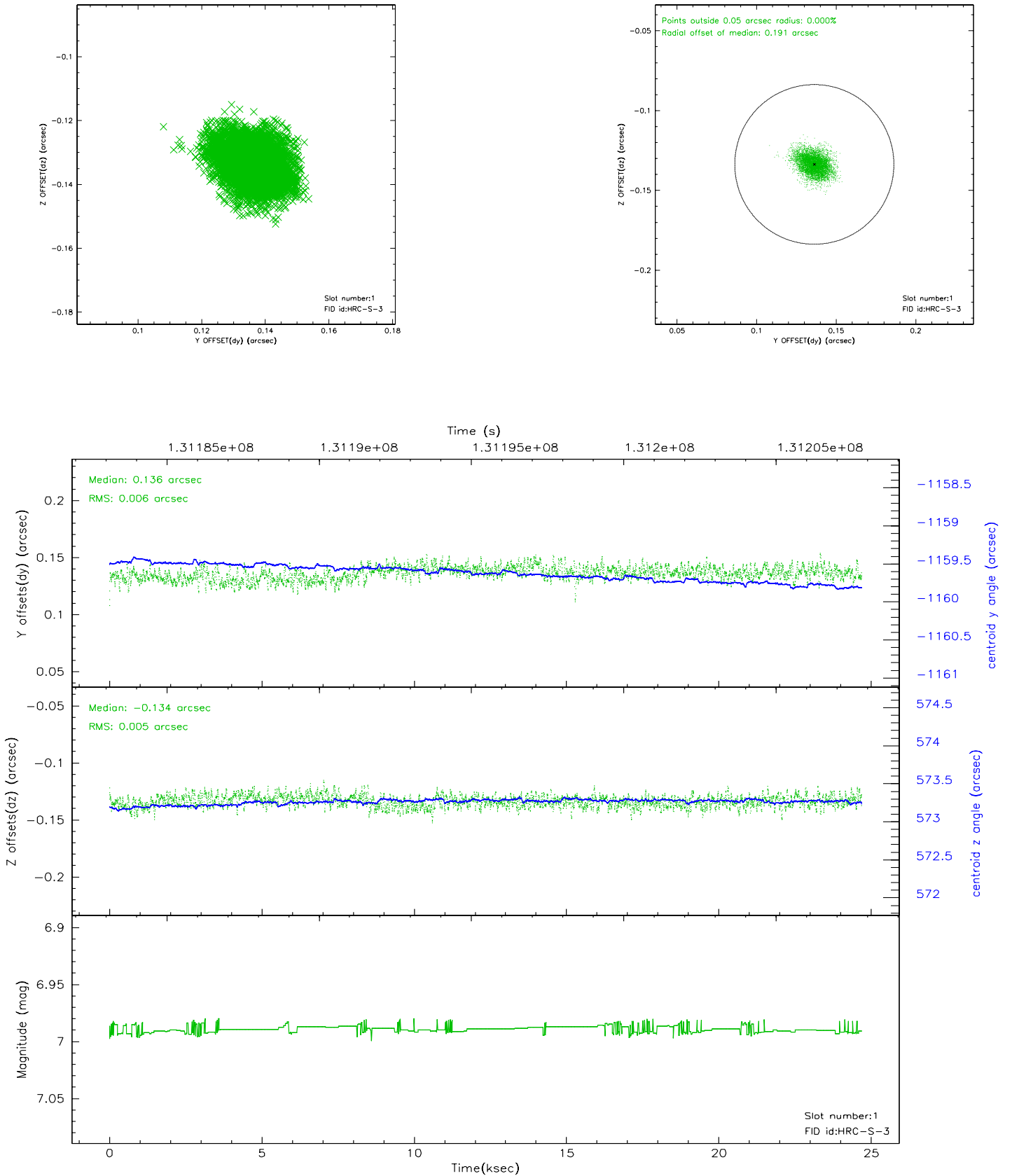


2.5 FID Slots

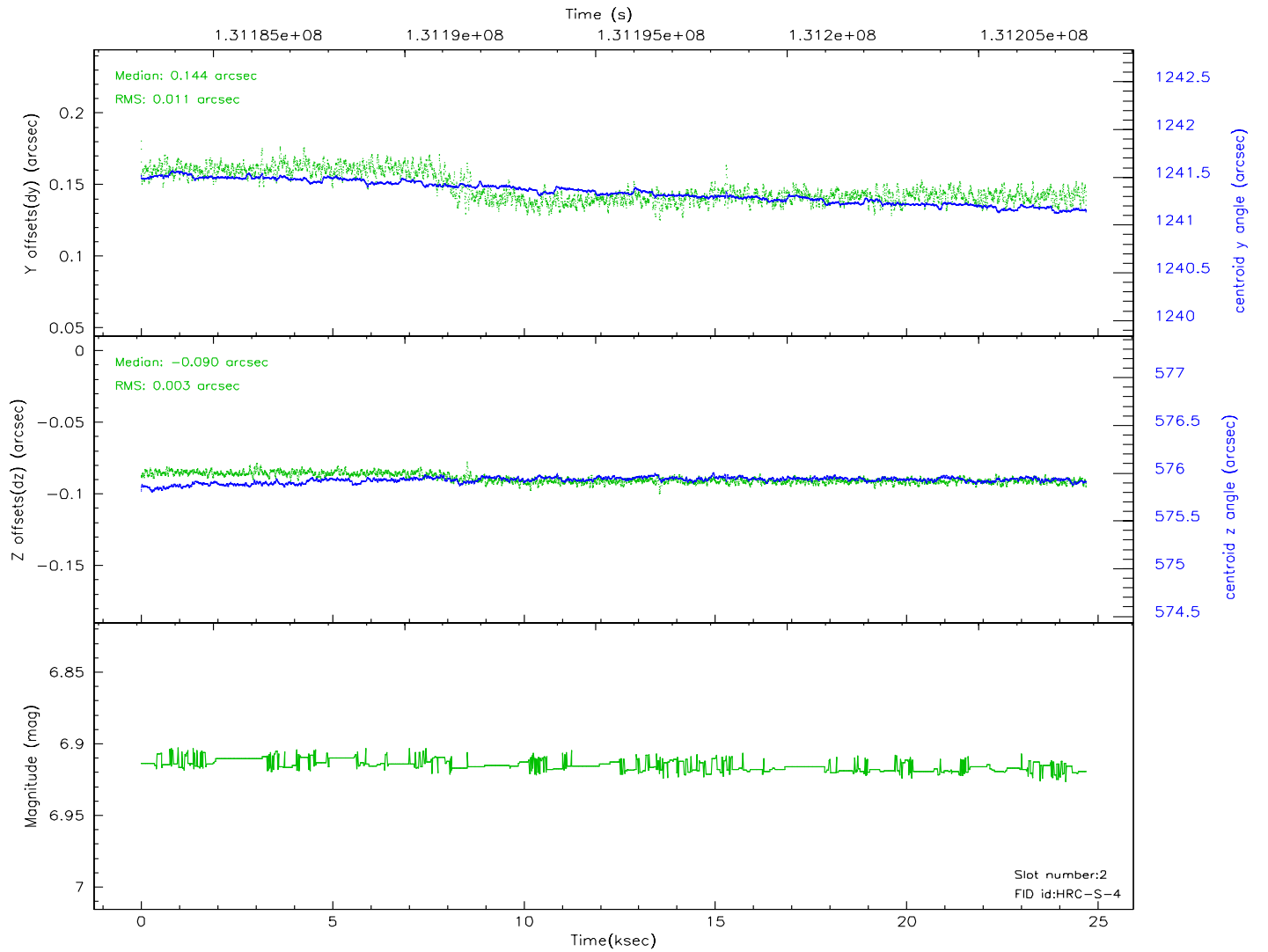
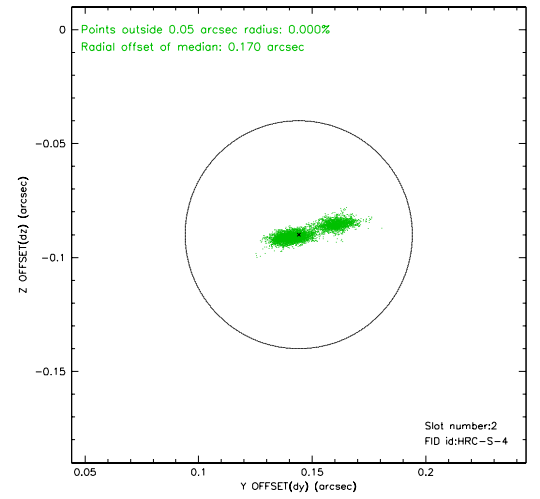
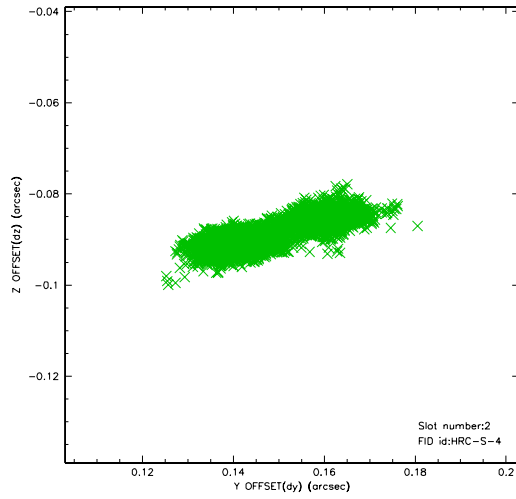
2.5.1 Slot 0



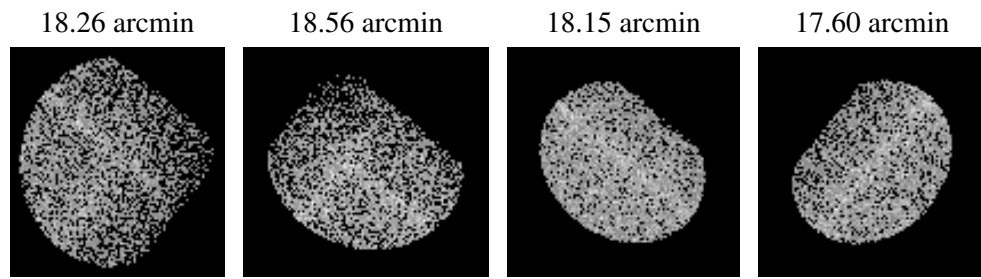
2.5.2 Slot 1



2.5.3 Slot 2



3 Point Sources



A Summary

A.1 Status

V&V Scientist	Beth Sundheim
V&V Date (YYYY-MM-DD)	2006.09.05
V&V Edition	1
V&V Disposition and Status	OK
V&V Charge Time	24.32

A.2 Comments