

# V&V Reference Report

## L2 ASCDS Version : 8.4.5

Observation 2731 - L2 Version 3  
Chandra X-Ray Center

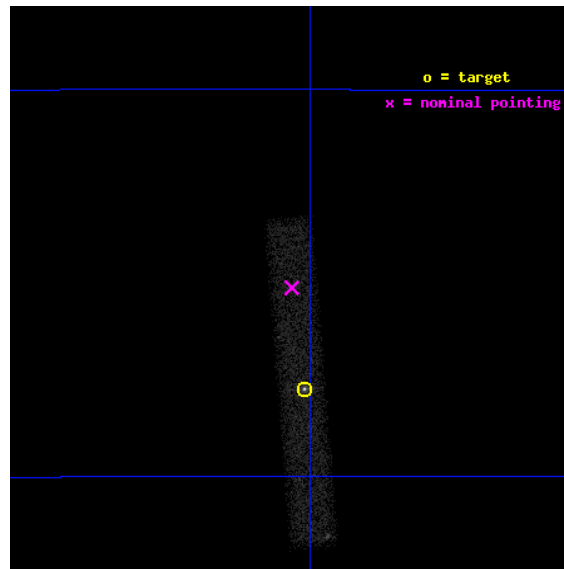
L2 Processing Date : Oct 3 2012

## Contents

<b>1</b>	<b>Front</b>	<b>2</b>
<b>2</b>	<b>OBI</b>	<b>3</b>
2.1	OBI . . . . .	3
2.1.1	Images . . . . .	3
2.1.2	Bias . . . . .	3
2.1.3	Parameters . . . . .	4
2.1.4	Events . . . . .	4
2.2	Compared Parameters . . . . .	5
2.3	Aspect . . . . .	6
2.4	Star Slots . . . . .	9
2.4.1	Slot 3 . . . . .	9
2.4.2	Slot 4 . . . . .	10
2.4.3	Slot 5 . . . . .	11
2.4.4	Slot 6 . . . . .	12
2.4.5	Slot 7 . . . . .	13
2.5	FID Slots . . . . .	14
2.5.1	Slot 0 . . . . .	14
2.5.2	Slot 1 . . . . .	15
2.5.3	Slot 2 . . . . .	16
<b>A</b>	<b>Summary</b>	<b>17</b>
A.1	Status . . . . .	17
A.2	Comments . . . . .	17

# 1 Front

seq_num	400211	Sequence number
obs_id	2731	Observation id
title	BLACK HOLE X-RAY TRANSIENTS DURING OUTBURST DECAY	Proposal title
observer	Dr. John Tomsick	Principal investigator
object	XTE J1650-500	Source name
dtcycle	0	&#160
cycle	P	events from which exps? Prim/Second/Both
ra_targ	252.504167	Observer's specified target RA [deg]
dec_targ	-49.9625	Observer's specified target Dec [deg]
ra_nom	252.51265339755	Nominal RA [deg]
dec_nom	-49.918759031491	Nominal Dec [deg]
roll_nom	85.22592525523	Nominal Roll [deg]
revision	3	Processing version of data
ontime	20140.400300115	Sum of GTIs [s]
livetime	18266.27997471	Livetime [s]
ontime7	20140.400300115	Sum of GTIs [s]
l2events	20051	Number of level 2 events

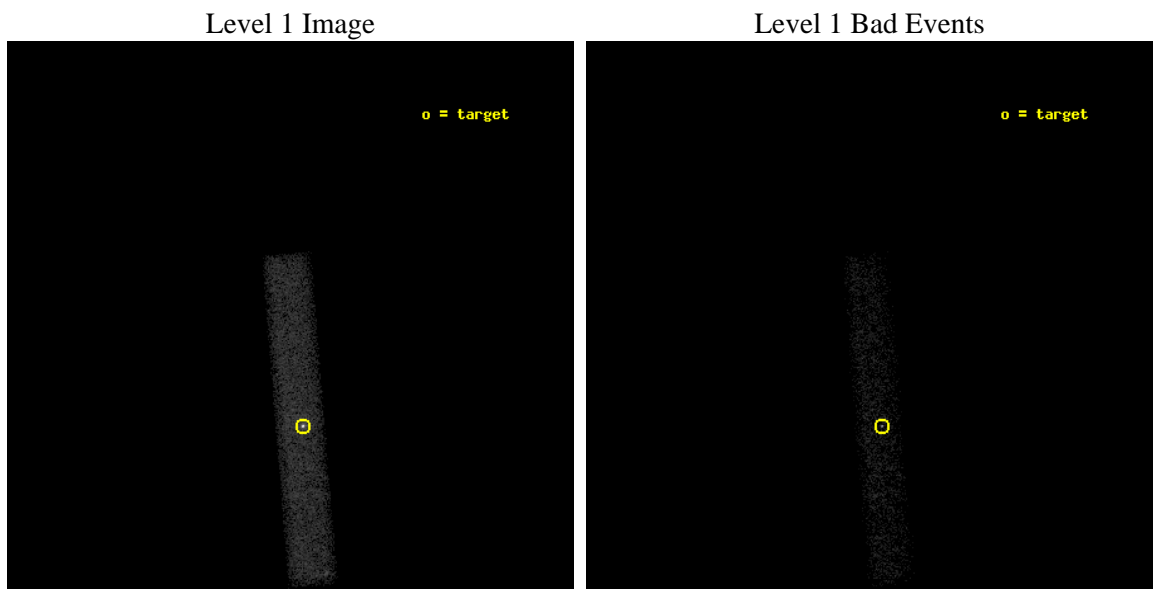




## 2 OBI

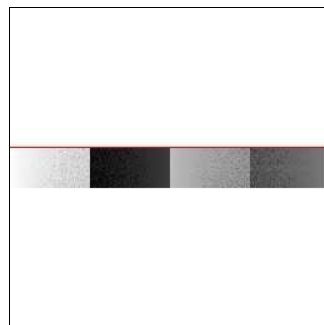
### 2.1 OBI

#### 2.1.1 Images



#### 2.1.2 Bias

Chip 7



### 2.1.3 Parameters

obi_num	0	Obi number	sched_exp_time	20000.000000	[s] Scheduled observation exposure time
ascdsver	8.4.5	Processing system revision	ontime	20140.400300115	Sum of GTIs [s]
caldsver	4.5.2	&#160	ontime7	20140.400300115	Sum of GTIs [s]
date	2012-10-03T03:31:19	Date and time of file creation	l1events	34232	Number of level 1 events
revision	3	Processing version of data			

### 2.1.4 Events

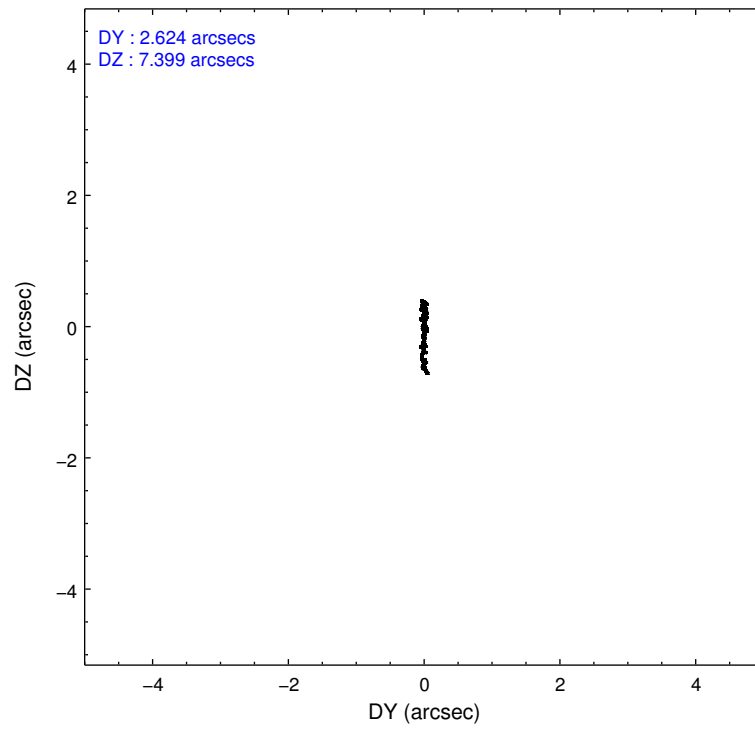
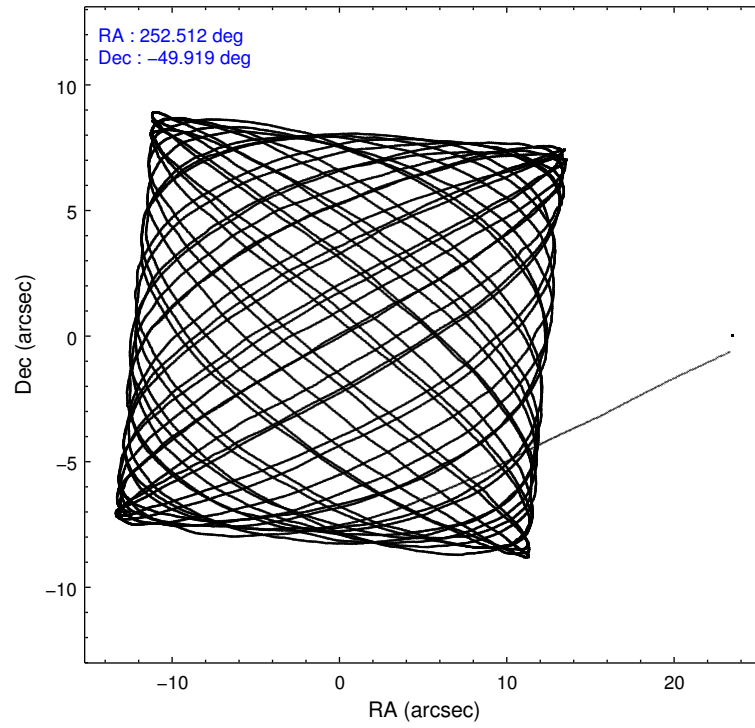
	<b>ccd 7</b>
level 1 events	34232
rejected events	13739
rejected %	40%

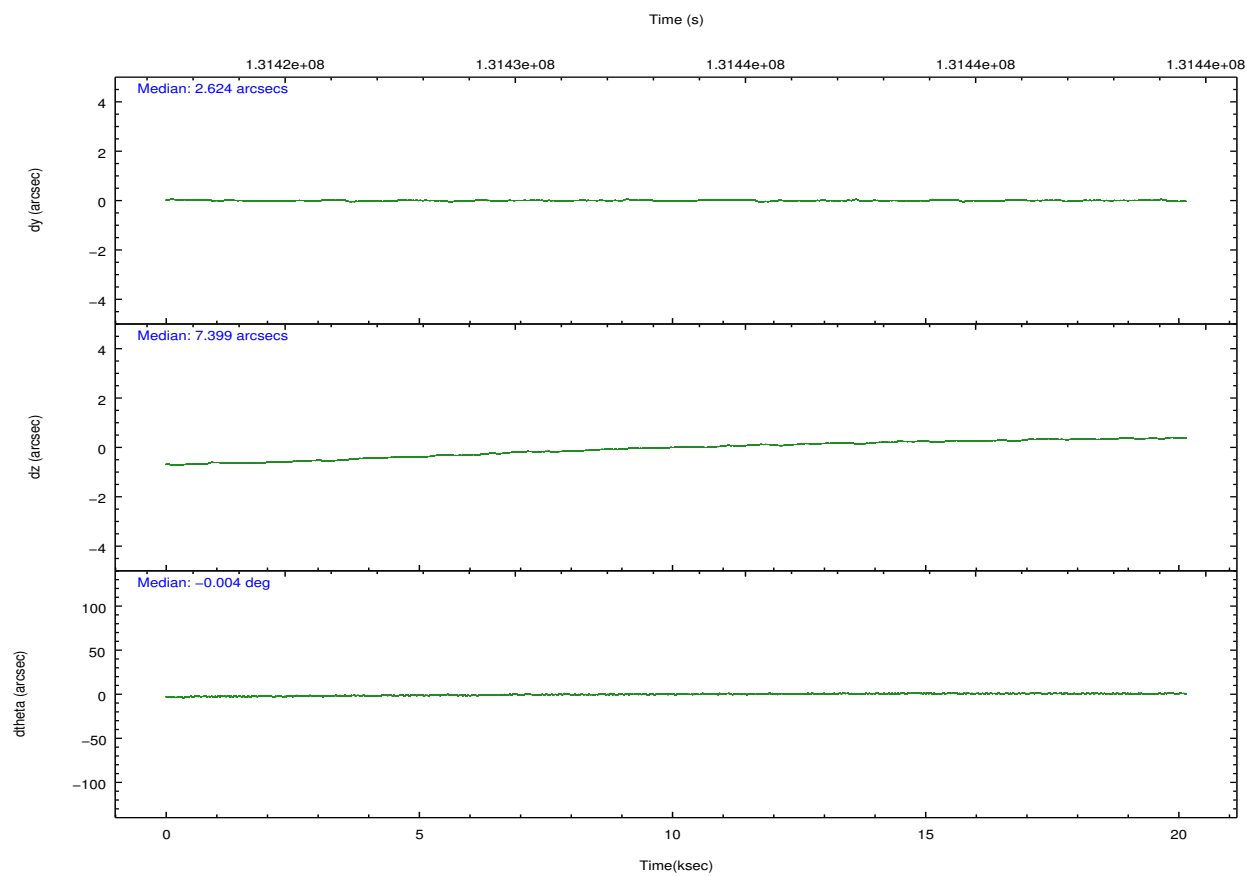
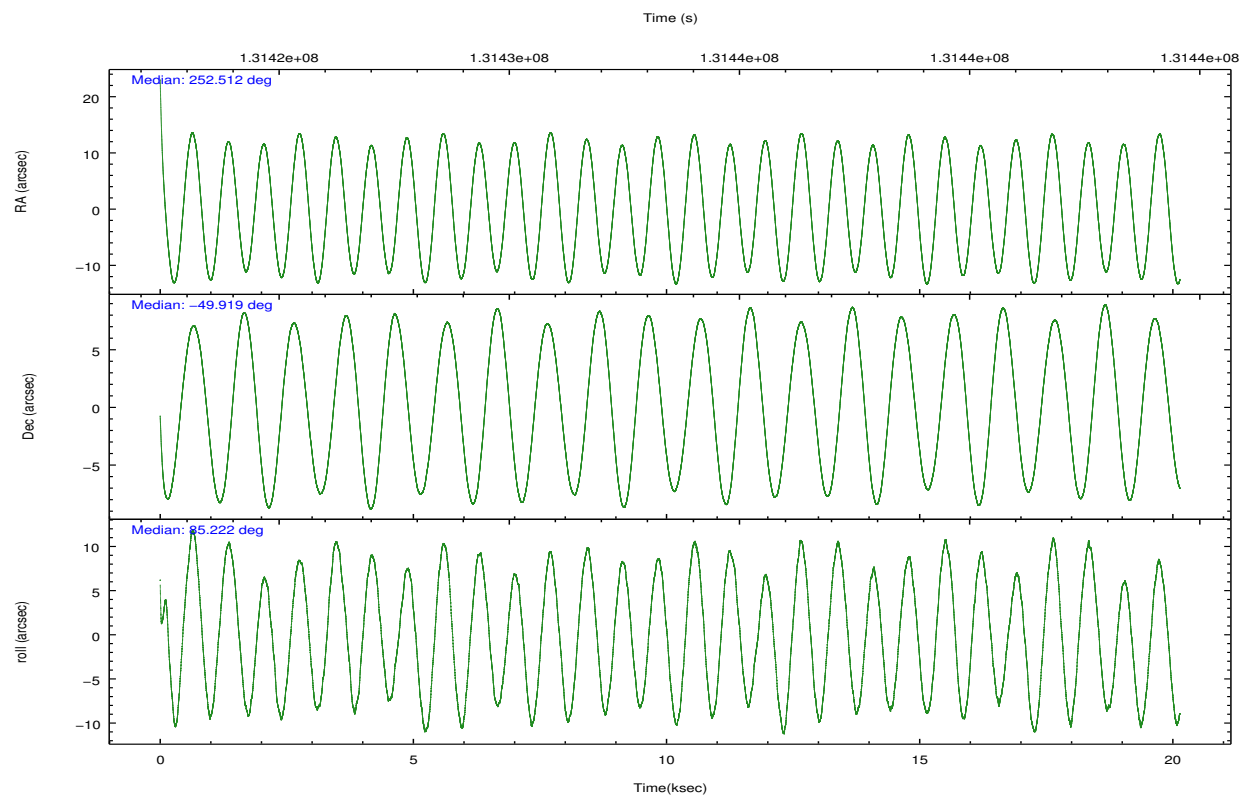
	<b>ccd 7</b>
grade 0 events	3789
	11%
grade 1 events	89
	0%
grade 2 events	4680
	13%
grade 3 events	2611
	7%
grade 4 events	2502
	7%
grade 5 events	2555
	7%
grade 6 events	7352
	21%
grade 7 events	10654
	31%

## 2.2 Compared Parameters

Parameter	Planned	Actual	Parameter	Planned	Actual
Instrument	ACIS	ACIS	Obspar format version number	7	7
Detector	ACIS-7	ACIS-7	Obspar file type	PREDICTED	ACTUAL
Grating	NONE	NONE	Obspar update status	NONE	UPDATED
Data mode	FAINT	FAINT	Number of optional ACIS chips dropped	0	0
Observation mode	POINTING	POINTING	On-chip summing requested	N	N
[deg] Pointing RA	252.531181	252.5126533975484	Subarray requested	CUSTOM	1/8
[deg] Pointing Dec	-49.943253	-49.91875903149116	Subarray start row	449	449
[deg] Pointing Roll	85.083487	85.22592525522988	Subarray row count	128	128
[mm] SIM focus pos	-0.684267	-0.6828225247311905	Alternating exposures requested	N	N
[mm] SIM defocus	0	0.001444936568705701	[s] Primary exposure time	0.000000	0.4
[mm] SIM translation stage pos	-190.132523	-190.1400660498719			
[mm] SIM translation stage offset	0	0.00754346686406393			
[s] Observation start time (MET)	131423563.184000	131422589.10861			
Observation start date	2002-03-02T02:31:39	2002-03-02T02:16:29			
[s] Observation end time (MET)	131443563.184000	131444050.55947			
Observation end date	2002-03-02T08:04:59	2002-03-02T08:14:10			
Read mode	TIMED	TIMED			

## 2.3 Aspect



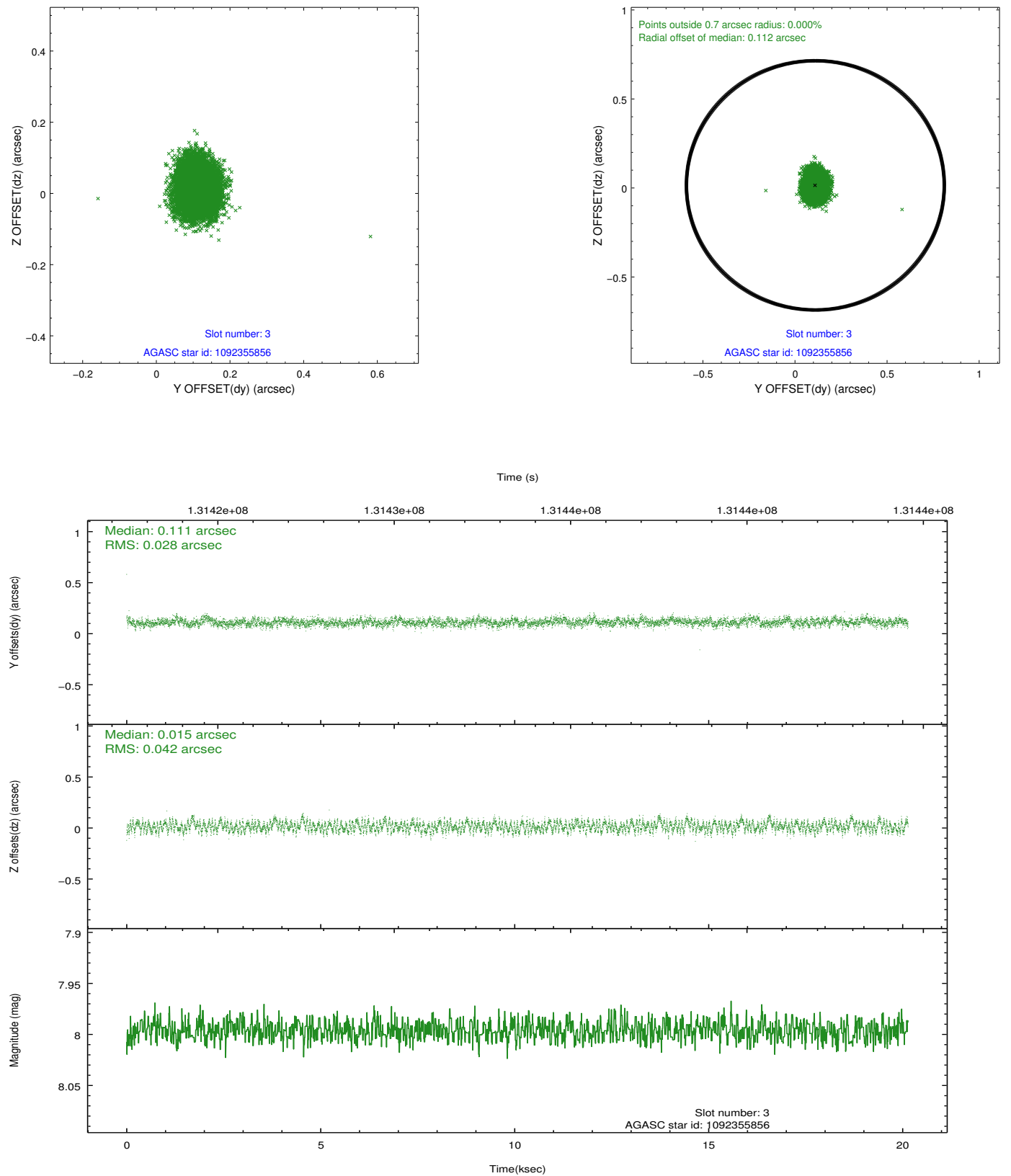


### Slot Statistics

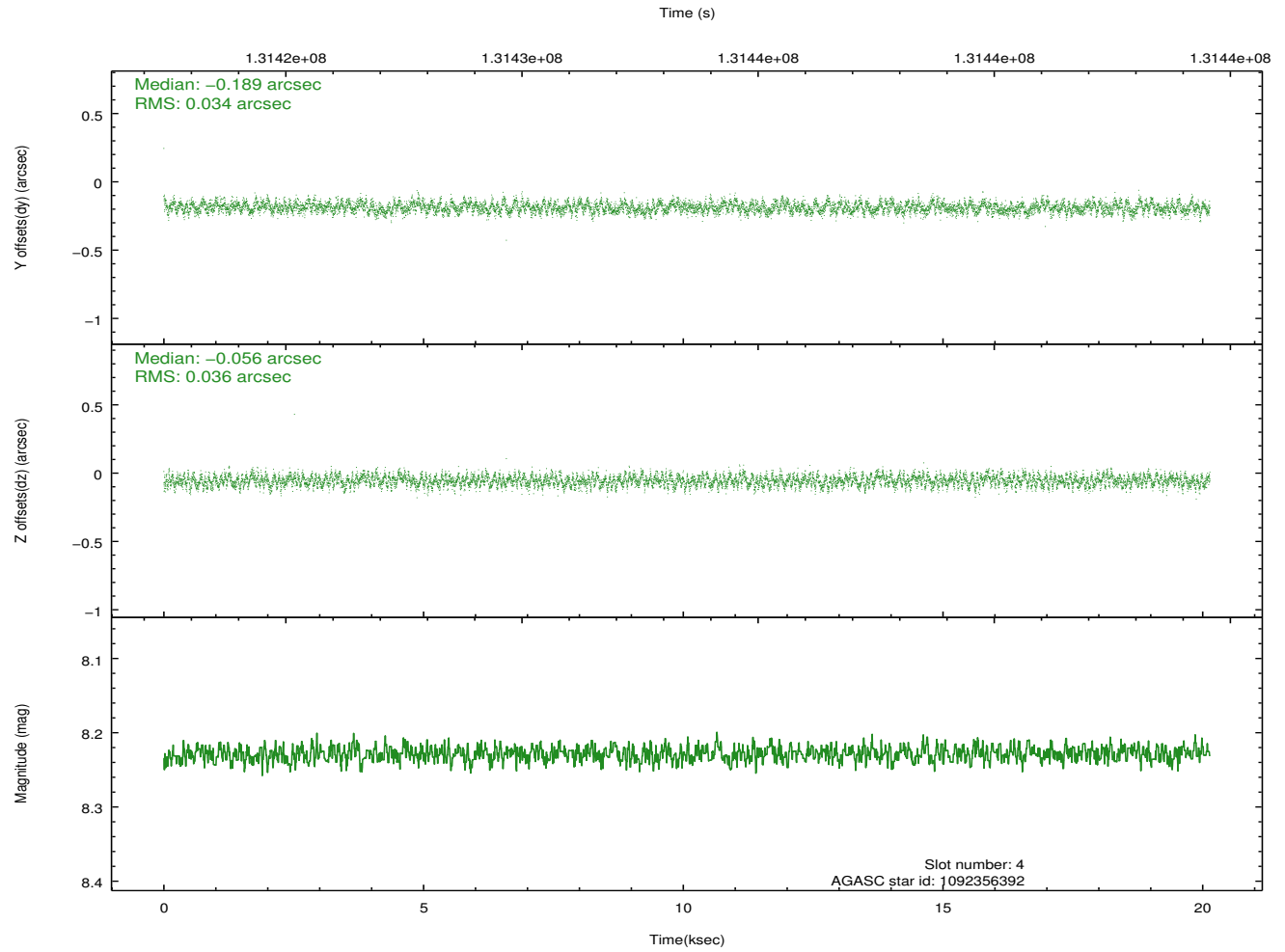
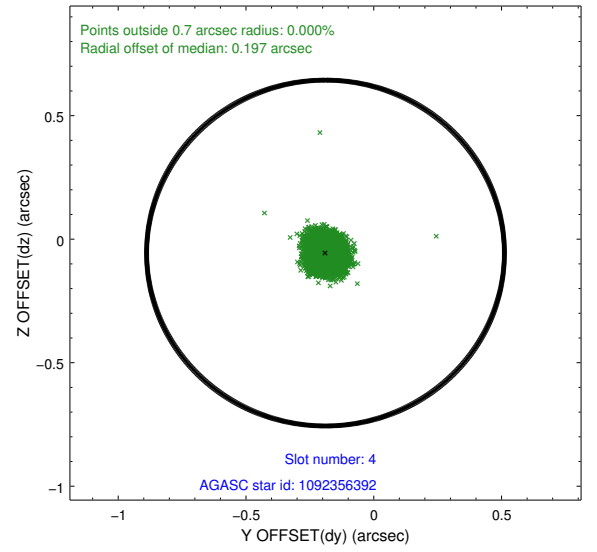
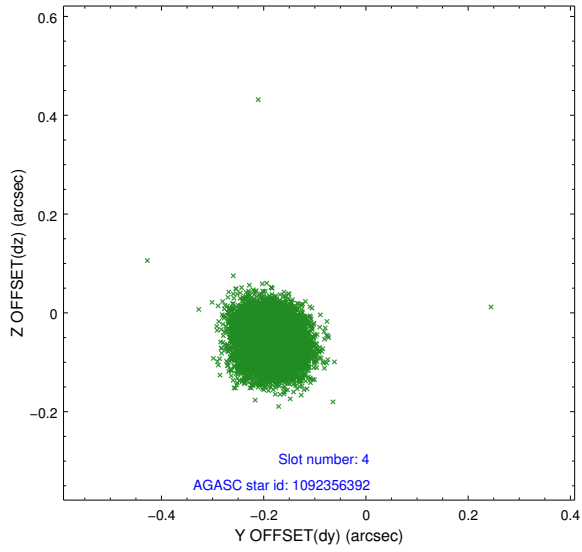
slot	status	id	mag	n_pts	med_dy	med_dz	dr1	dr2	ra	dec	mean_y	mean_z
0	FID	ACIS-S-2	7.11	4913	-0.013	0.007	0.010	0.017	0.000000	0.000000	-755.27	-1728.49
1	FID	ACIS-S-4	7.20	4913	-0.046	0.005	0.006	0.011	0.000000	0.000000	2157.89	179.79
2	FID	ACIS-S-5	7.24	4913	0.029	-0.002	0.010	0.017	0.000000	0.000000	-1807.83	173.67
3	GUIDE	1092355856	8.00	9824	0.111	0.015	0.054	0.085	252.380362	-50.402230	-1674.77	202.51
4	GUIDE	1092356392	8.23	9825	-0.189	-0.056	0.053	0.083	252.320454	-49.578691	1265.73	601.99
5	GUIDE	1092487776	8.58	9814	0.130	0.354	0.079	0.120	253.418062	-50.236939	-888.68	-2126.46
6	GUIDE	1092358240	9.30	9807	0.000	0.000	0.074	0.124	252.578586	-49.434240	1836.38	45.79
7	GUIDE	1092359992	9.46	9815	-0.049	-0.313	0.096	0.155	251.557386	-49.813189	259.34	2291.81

## 2.4 Star Slots

### 2.4.1 Slot 3

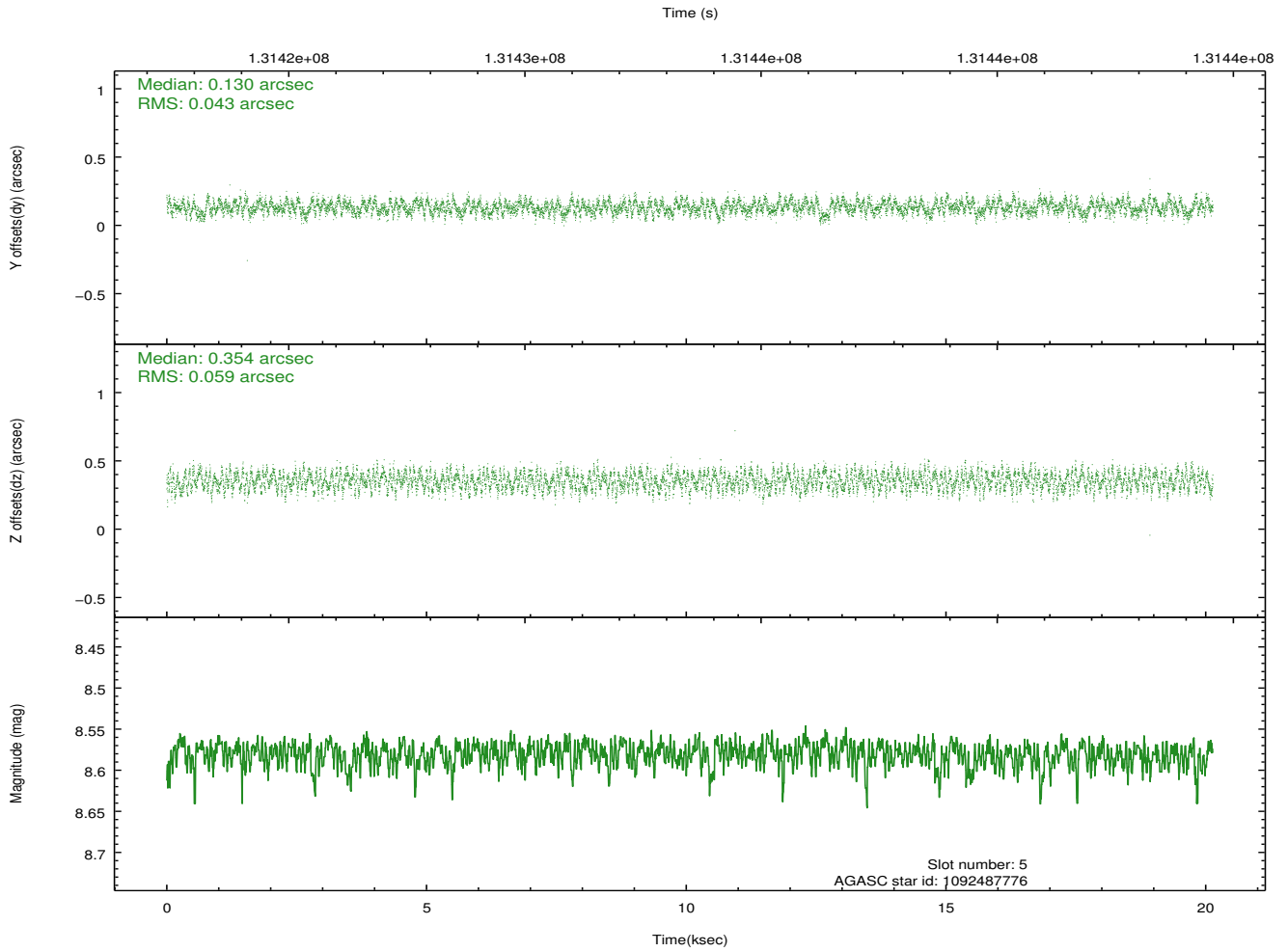
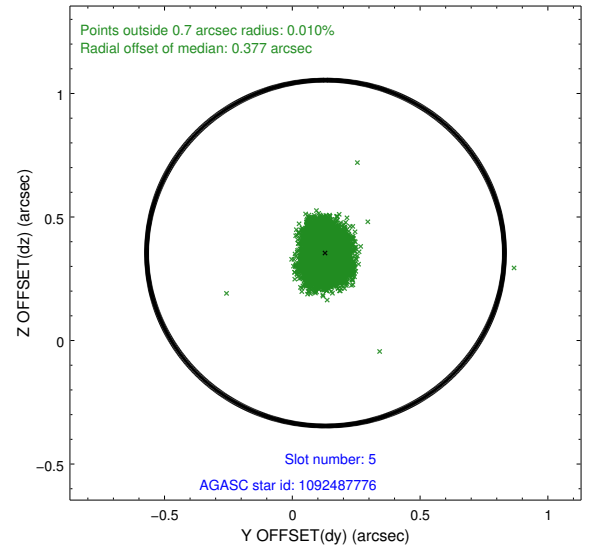
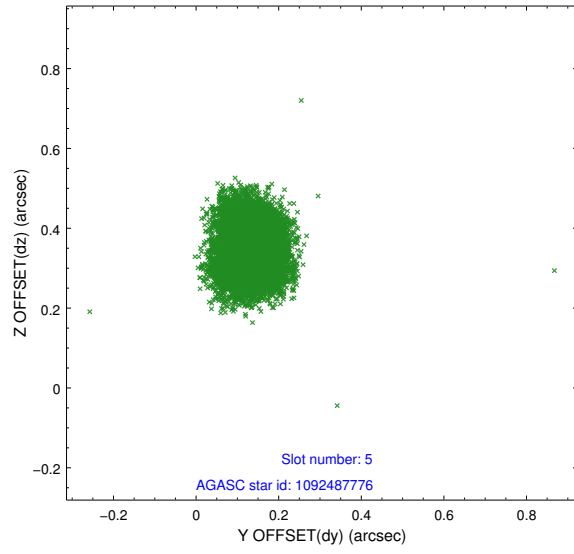


## 2.4.2 Slot 4

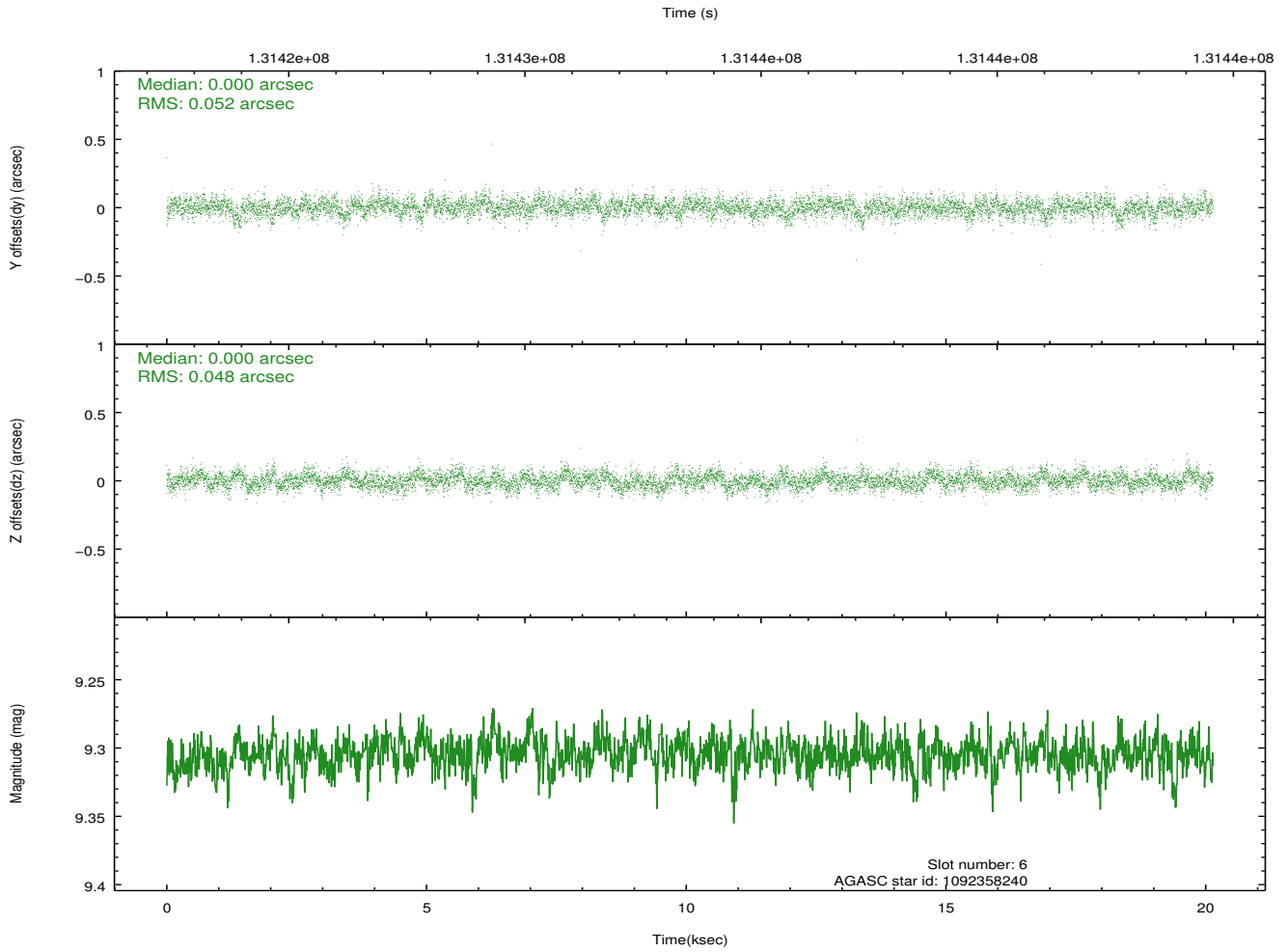
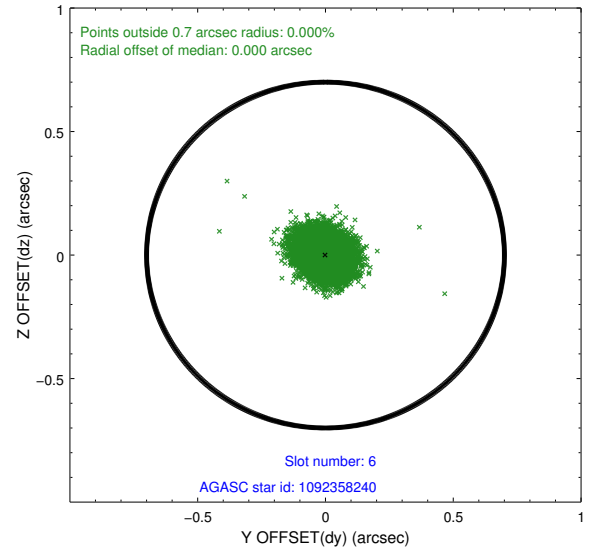
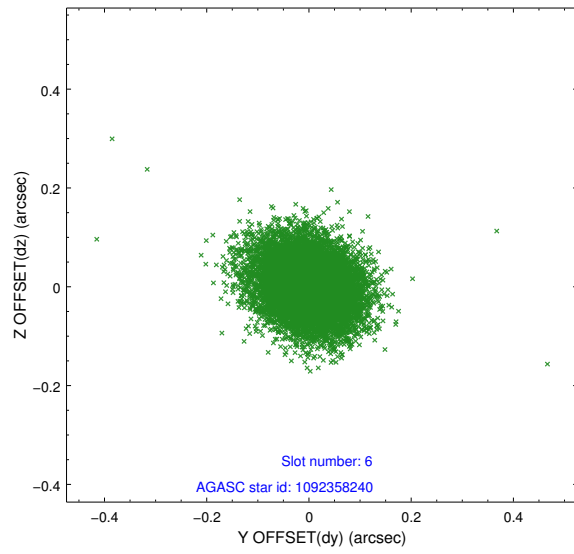




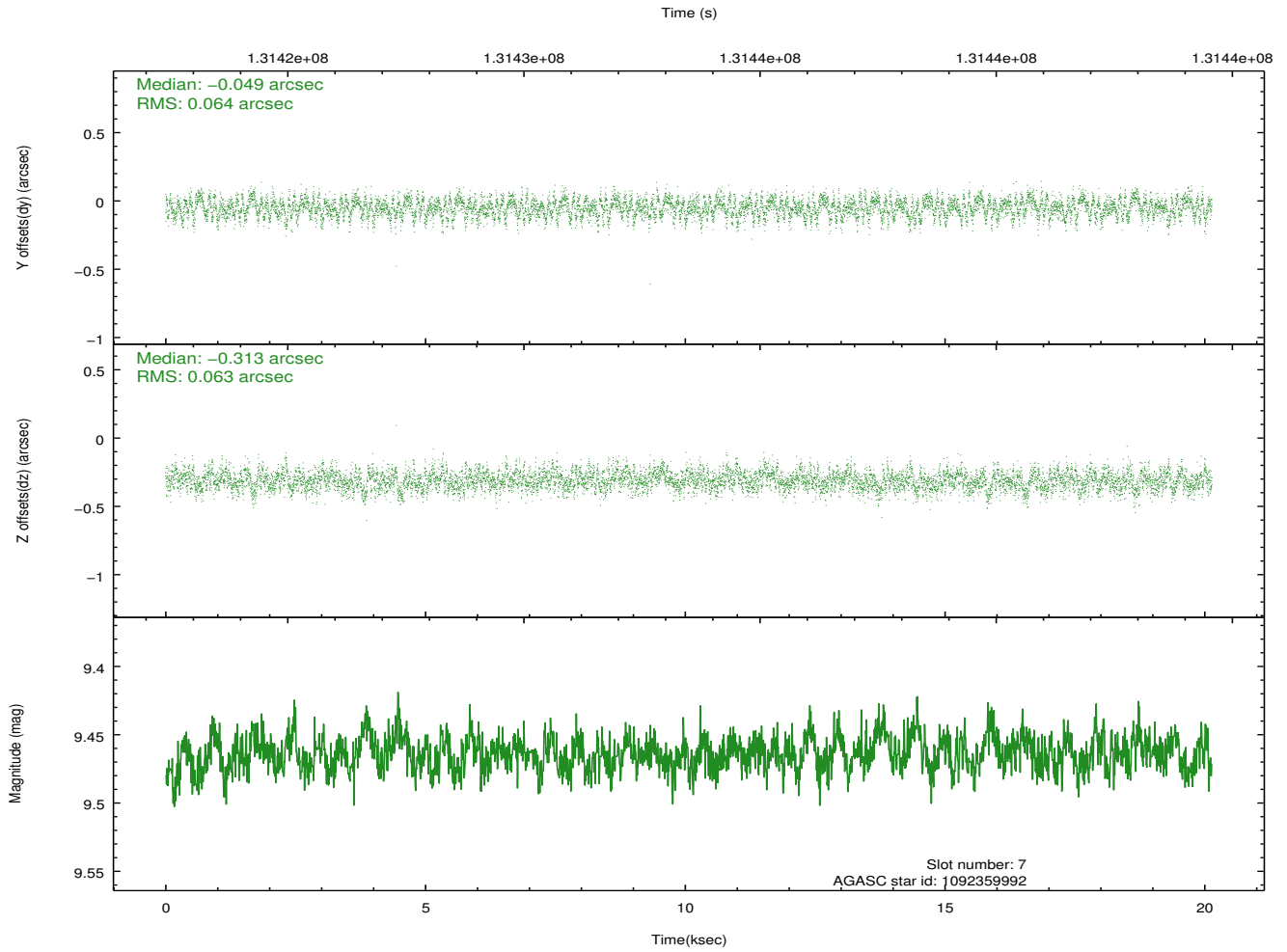
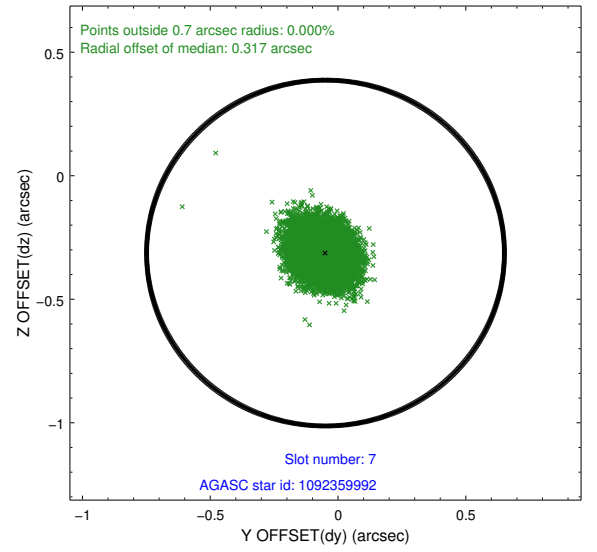
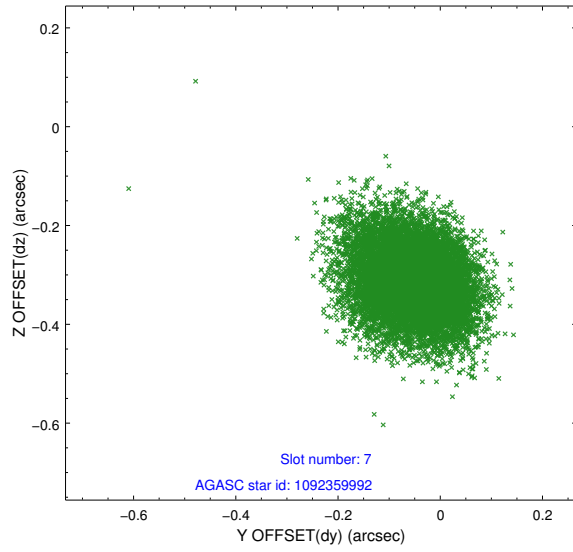
### 2.4.3 Slot 5



## 2.4.4 Slot 6

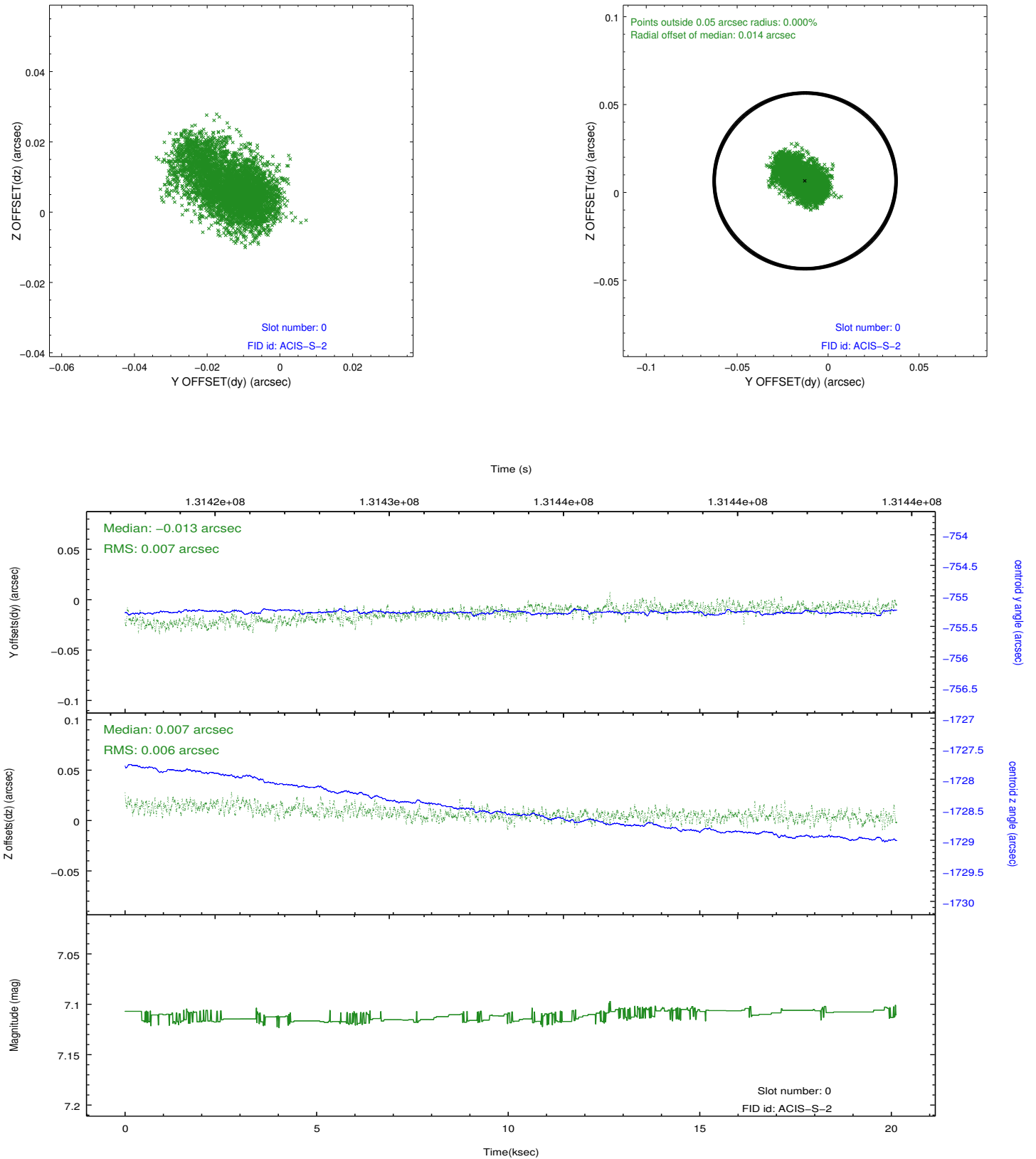


## 2.4.5 Slot 7

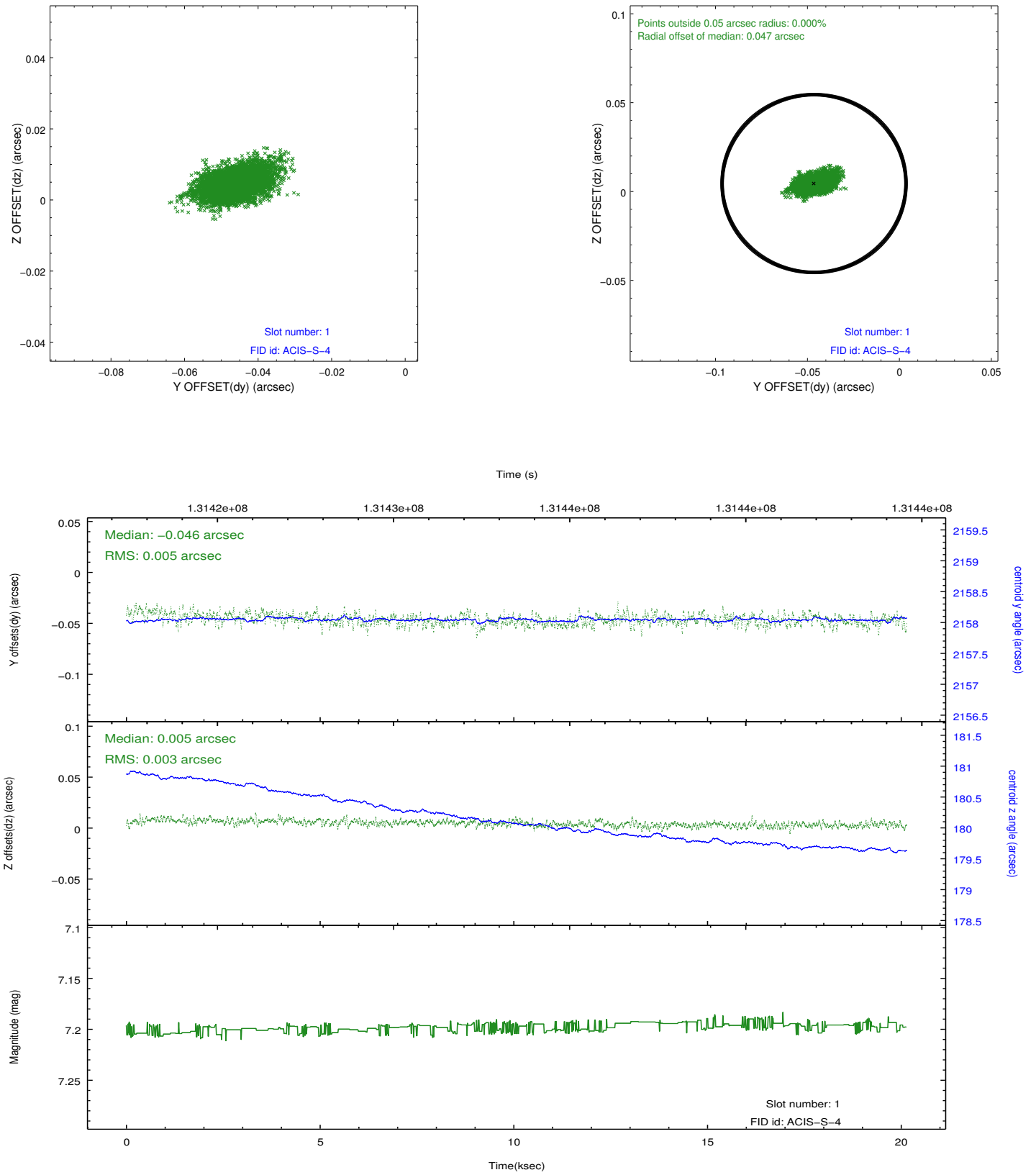


## 2.5 FID Slots

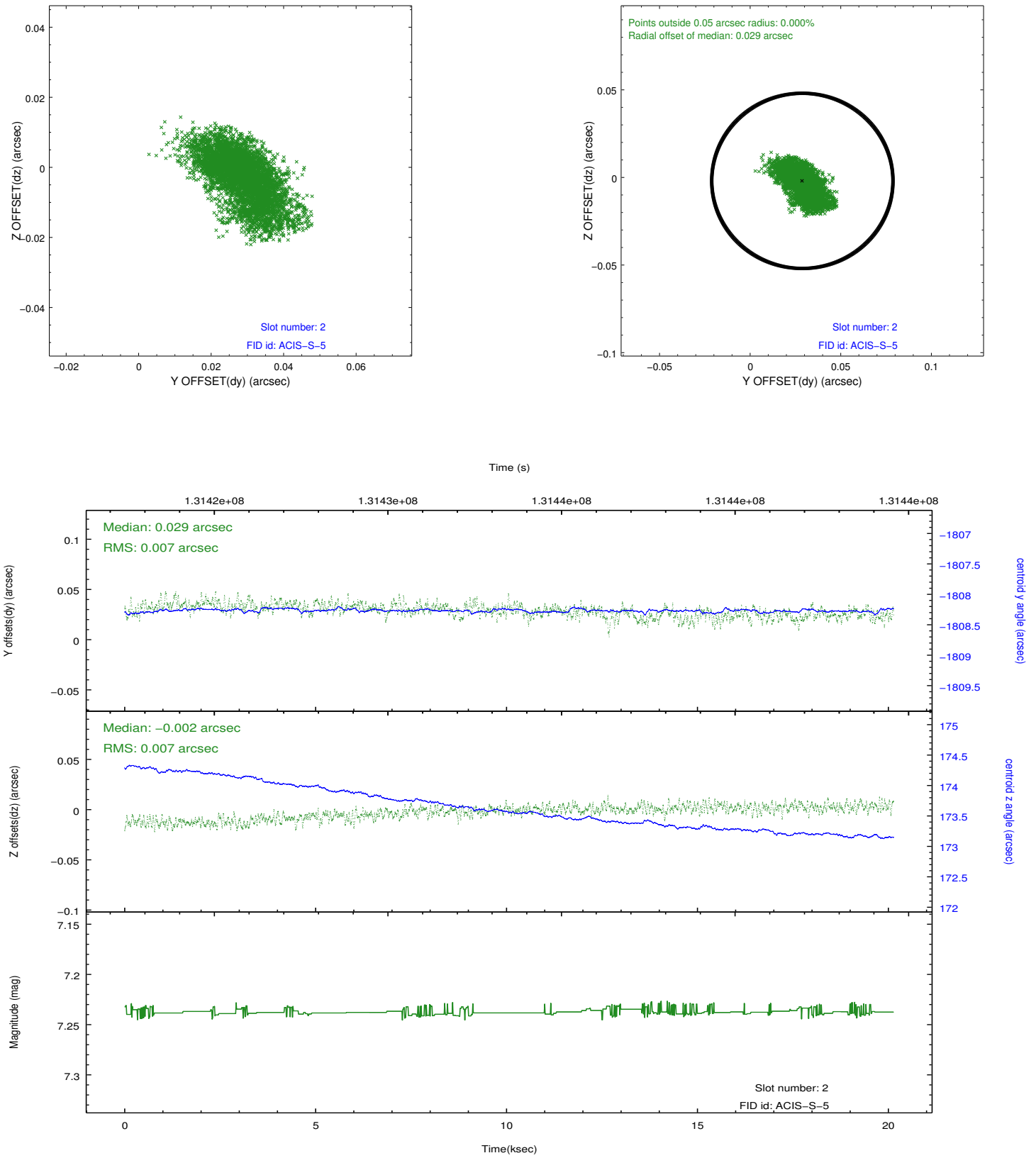
### 2.5.1 Slot 0



## 2.5.2 Slot 1



### 2.5.3 Slot 2



## A Summary

### A.1 Status

V&V Scientist	Jen Lauer
V&V Date (YYYY-MM-DD)	2012.10.04
V&V Edition	1
V&V Disposition and Status	OK
V&V Charge Time	20.14

### A.2 Comments