

V&V Reference Report

L2 ASCDS Version : 8.4.5

Observation 2698 - L2 Version 3
Chandra X-Ray Center

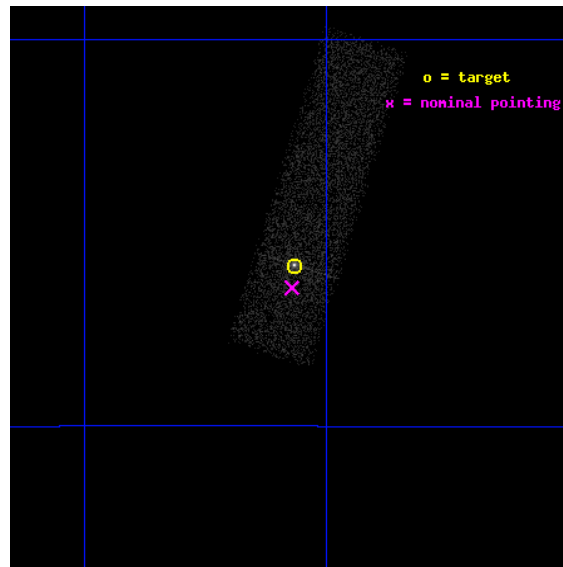
L2 Processing Date : Oct 11 2012

Contents

1	Front	2
2	OBI	3
2.1	OBI	3
2.1.1	Images	3
2.1.2	Bias	3
2.1.3	Parameters	4
2.1.4	Events	4
2.2	Compared Parameters	5
2.3	Aspect	6
2.4	Star Slots	9
2.4.1	Slot 3	9
2.4.2	Slot 4	10
2.4.3	Slot 5	11
2.4.4	Slot 6	12
2.4.5	Slot 7	13
2.5	FID Slots	14
2.5.1	Slot 0	14
2.5.2	Slot 1	15
2.5.3	Slot 2	16
A	Summary	17
A.1	Status	17
A.2	Comments	17

1 Front

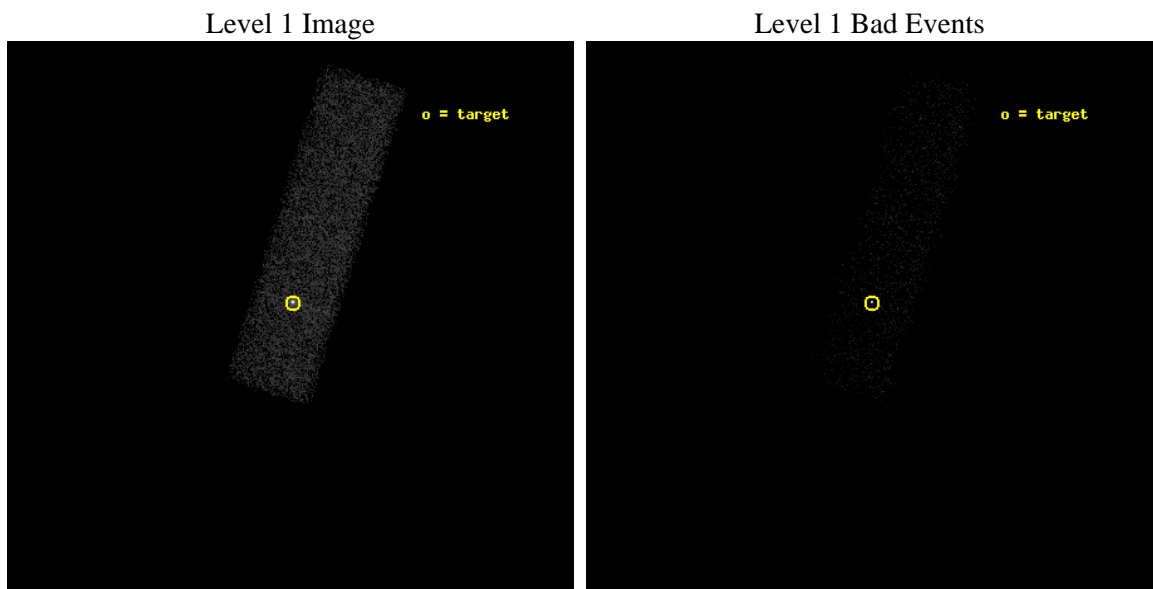
seq_num	400178	Sequence number
obs_id	2698	Observation id
title	THE FAINTEST 'FIELD' LOW-MASS X-RAY BINARIES	Proposal title
observer	PROF MICHIEL VAN DER KLIS	Principal investigator
object	1746.7-3224	Source name
dtcycle	0	
cycle	P	events from which exps? Prim/Second/Both
ra_targ	267.51625	Observer's specified target RA [deg]
dec_targ	-32.430833	Observer's specified target Dec [deg]
ra_nom	267.51772551619	Nominal RA [deg]
dec_nom	-32.44049869698	Nominal Dec [deg]
roll_nom	287.36779599723	Nominal Roll [deg]
revision	3	Processing version of data
ontime	8516.8001269102	Sum of GTIs [s]
livetime	8101.2081488731	Livetime [s]
ontime7	8516.8001269102	Sum of GTIs [s]
l2events	15554	Number of level 2 events



2 OBI

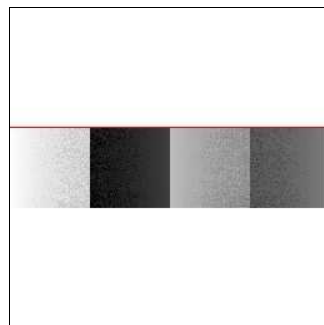
2.1 OBI

2.1.1 Images



2.1.2 Bias

Chip 7



2.1.3 Parameters

obi_num	0	Obi number	sched_exp_time	8000.000000	[s] Scheduled observation exposure time
ascdsver	8.4.5	Processing system revision	ontime	8516.8001269102	Sum of GTIs [s]
caldsver	4.5.2	 	ontime7	8516.8001269102	Sum of GTIs [s]
date	2012-10-11T14:28:19	Date and time of file creation	l1events	28610	Number of level 1 events
revision	3	Processing version of data			

2.1.4 Events

	ccd 7
level 1 events	28610
rejected events	12769
rejected %	44%

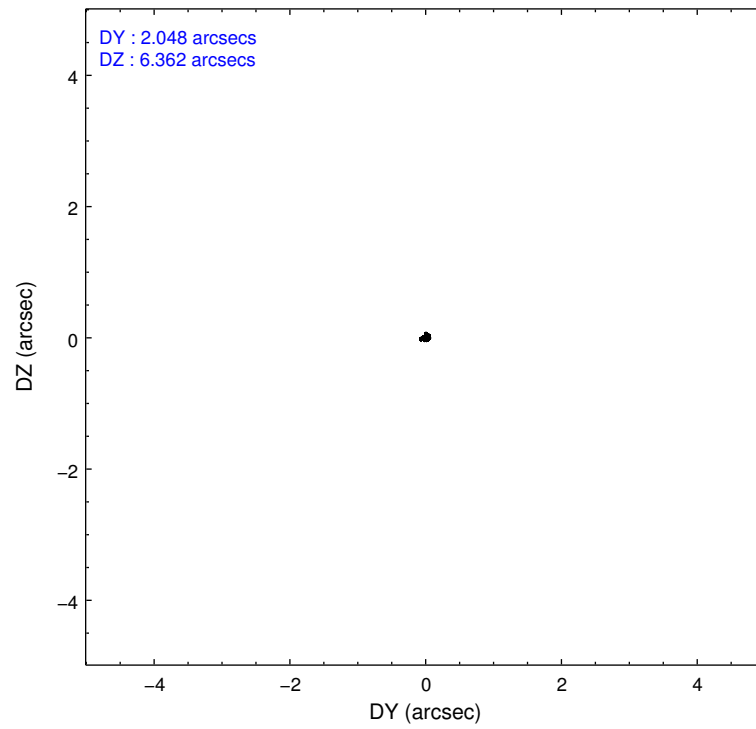
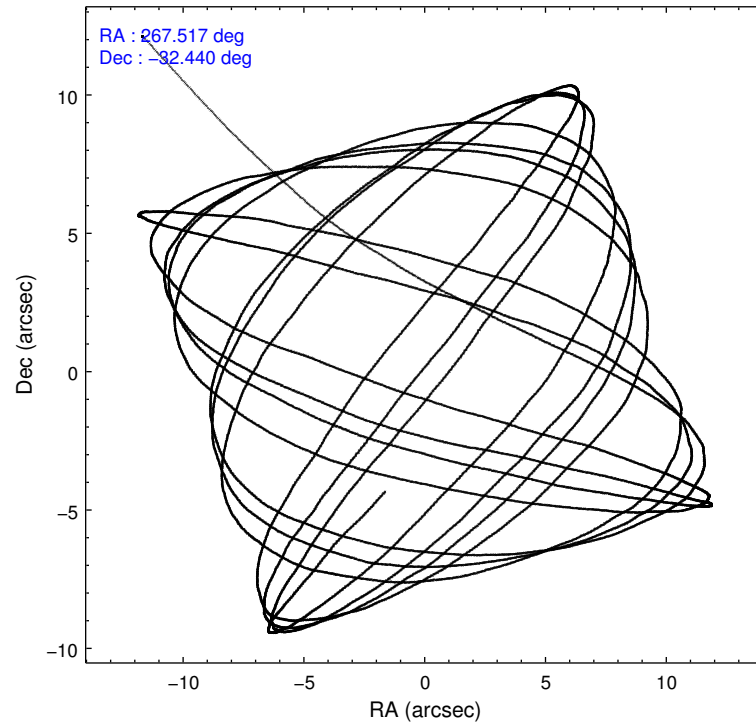
	ccd 7
grade 0 events	2262
	7%
grade 1 events	117
	0%
grade 2 events	3489
	12%
grade 3 events	1787
	6%
grade 4 events	1693
	5%
grade 5 events	2413
	8%
grade 6 events	7031
	24%
grade 7 events	9818
	34%

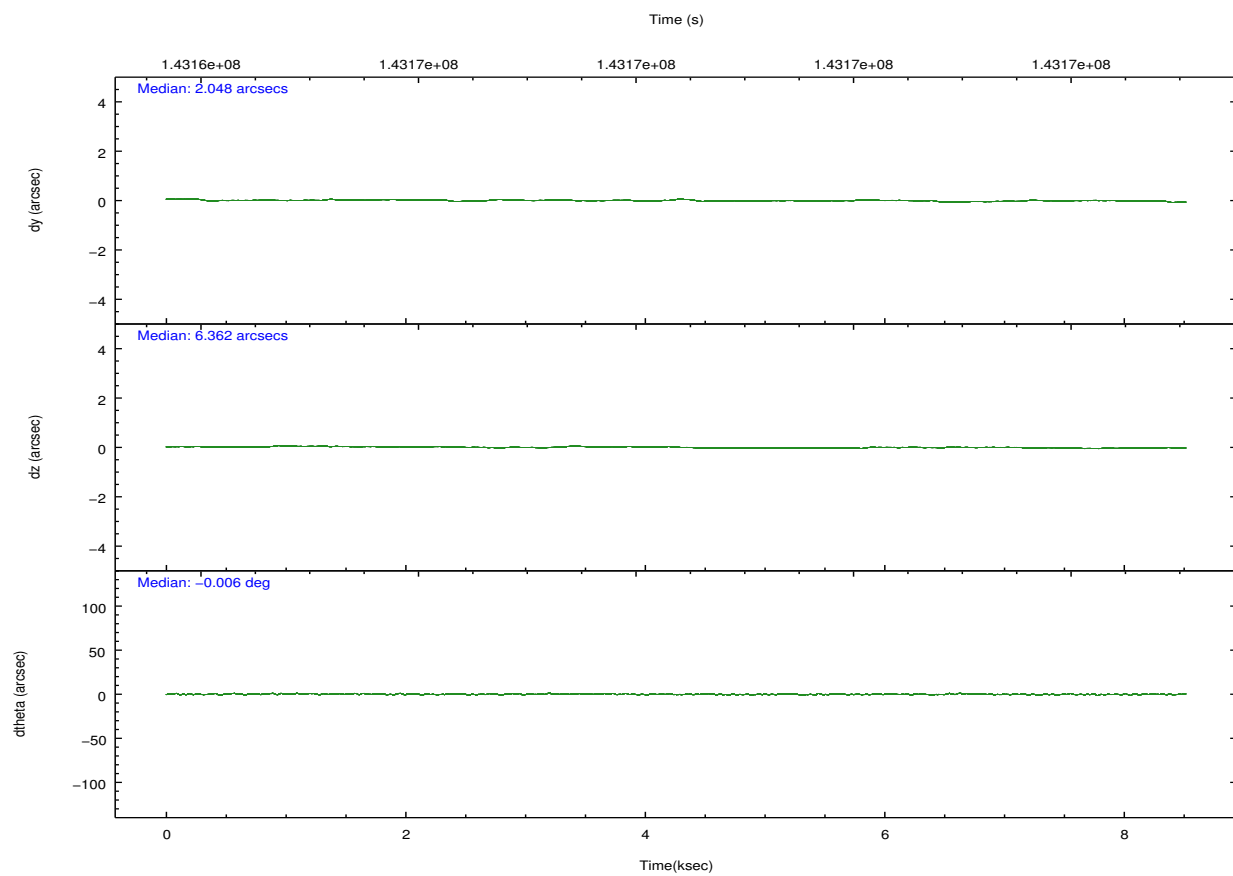
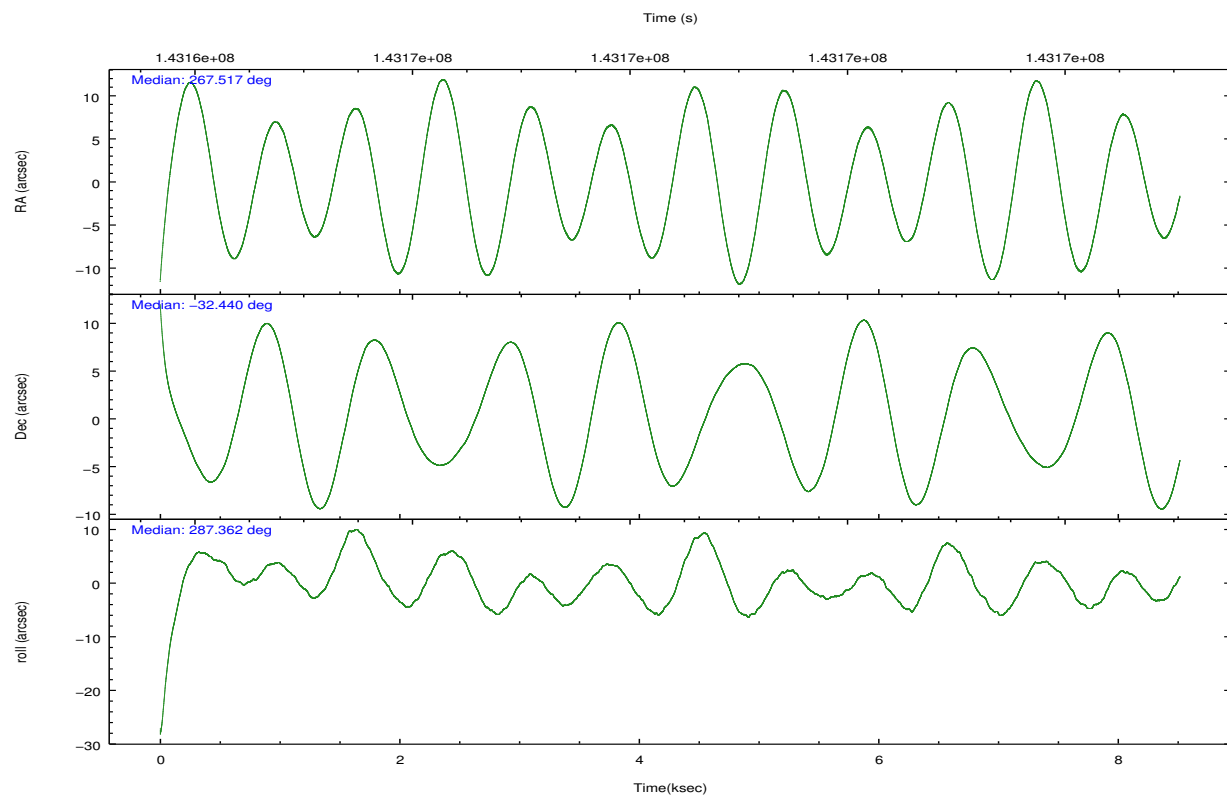
2.2 Compared Parameters

Parameter	Planned	Actual
Instrument	ACIS	ACIS
Detector	ACIS-7	ACIS-7
Grating	NONE	NONE
Data mode	FAINT	FAINT
Observation mode	POINTING	POINTING
[deg] Pointing RA	267.493672	267.5177255161931
[deg] Pointing Dec	-32.422257	-32.44049869698036
[deg] Pointing Roll	287.198280	287.3677959972259
[mm] SIM focus pos	-0.684267	-0.6828225247311905
[mm] SIM defocus	0	0.001444936568705701
[mm] SIM translation stage pos	-190.132523	-190.1400660498719
[mm] SIM translation stage offset	0	0.00754346686406393
[s] Observation start time (MET)	143164627.184000	143163501.7996
Observation start date	2002-07-15T23:56:03	2002-07-15T23:38:21
[s] Observation end time (MET)	143172627.184000	143173311.05
Observation end date	2002-07-16T02:09:23	2002-07-16T02:21:51
Read mode	TIMED	TIMED

Parameter	Planned	Actual
Obspar format version number	7	7
Obspar file type	PREDICTED	ACTUAL
Obspar update status	NONE	UPDATED
Number of optional ACIS chips dropped	0	0
On-chip summing requested	N	N
Subarray requested	CUSTOM	1/4
Subarray start row	384	385
Subarray row count	256	256
Alternating exposures requested	N	N
[s] Primary exposure time	0.000000	0.8

2.3 Aspect



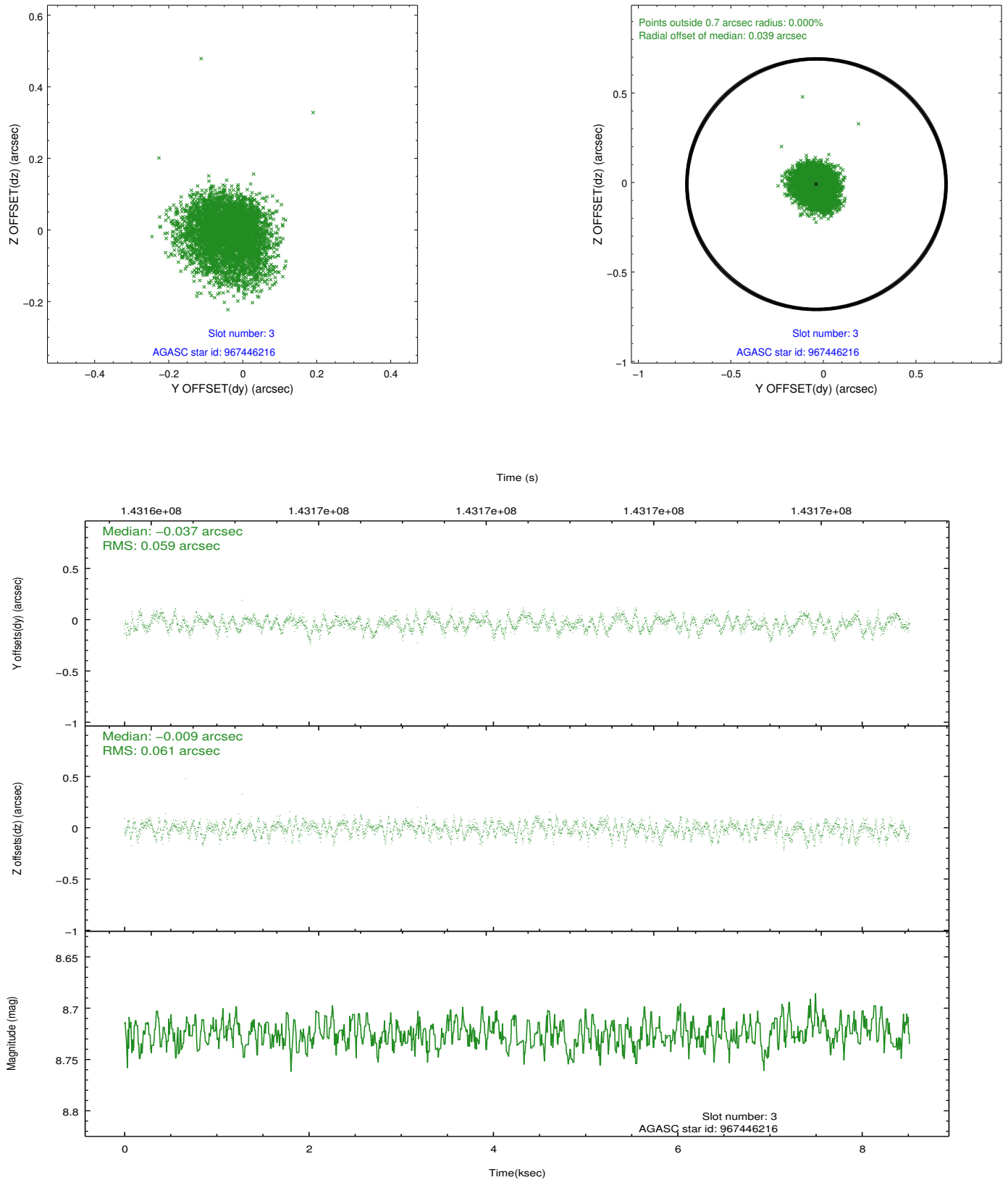


Slot Statistics

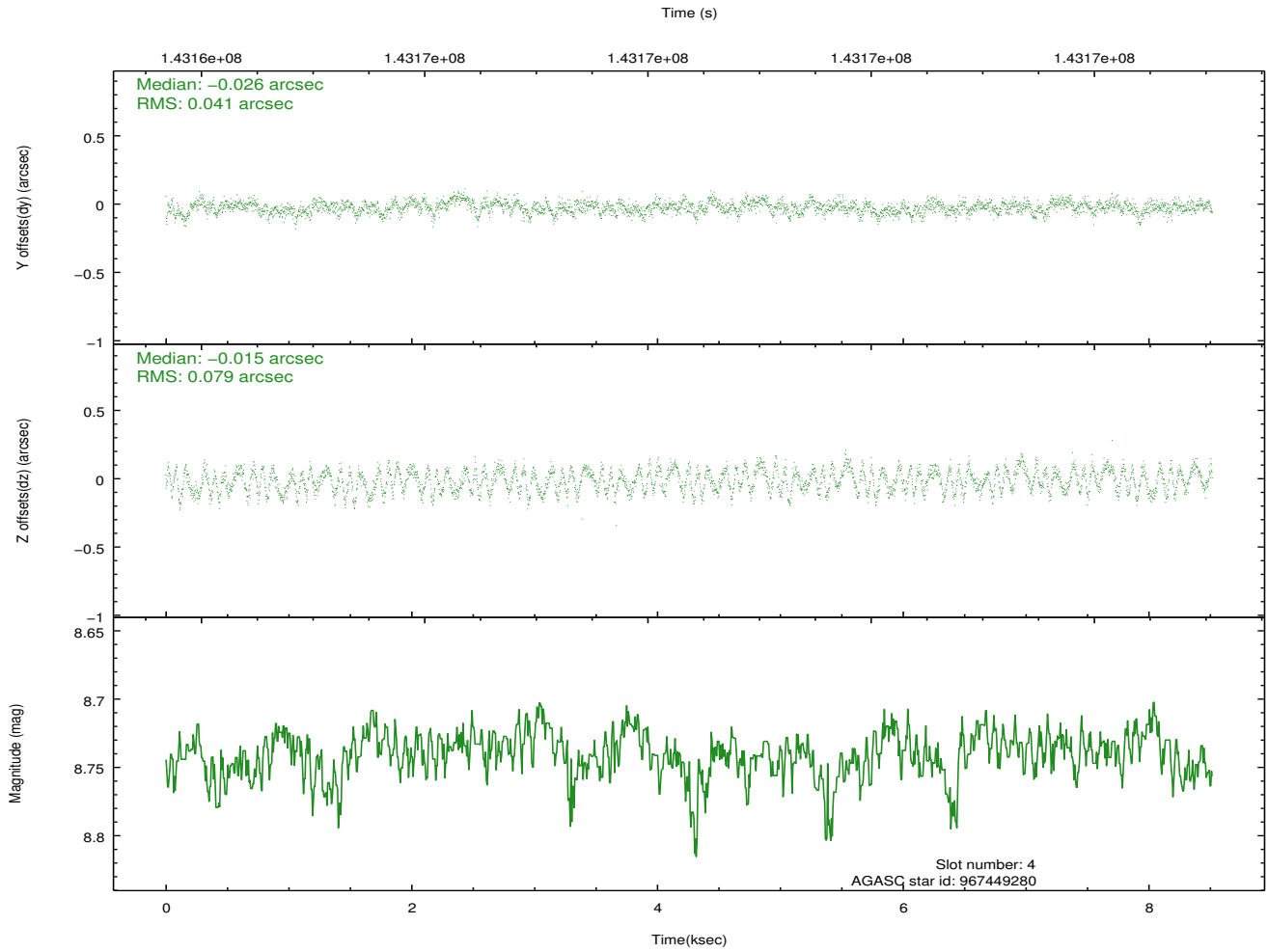
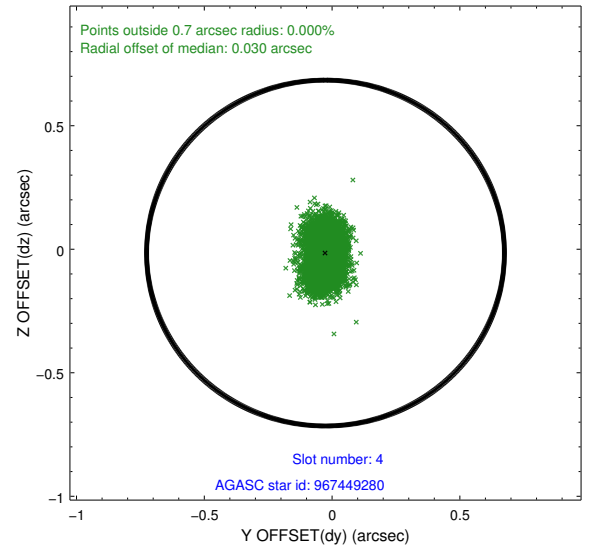
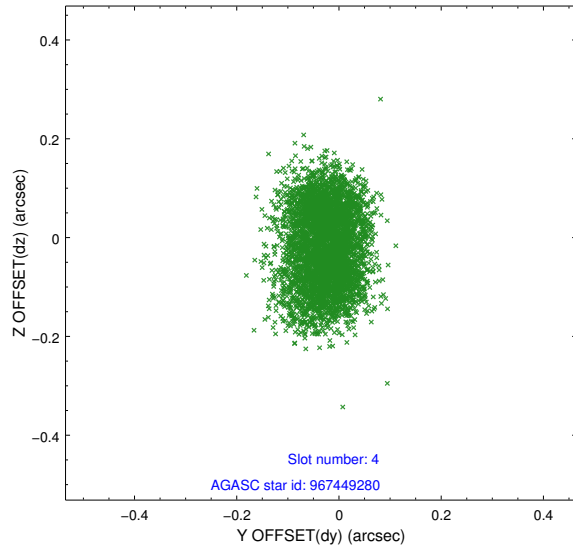
slot	status	id	mag	n_pts	med_dy	med_dz	dr1	dr2	ra	dec	mean_y	mean_z
0	FID	ACIS-S-1	7.18	2078	0.017	-0.052	0.006	0.011	0.000000	0.000000	941.40	-1723.19
1	FID	ACIS-S-5	7.24	2078	-0.010	0.018	0.006	0.009	0.000000	0.000000	-1807.27	173.76
2	FID	ACIS-S-6	7.35	2078	-0.029	0.046	0.007	0.011	0.000000	0.000000	406.20	818.49
3	GUIDE	967446216	8.72	4154	-0.037	-0.009	0.091	0.143	266.739036	-32.414310	-696.84	-2184.53
4	GUIDE	967449280	8.74	4154	-0.026	-0.015	0.096	0.149	266.690713	-32.455990	-595.70	-2368.93
5	GUIDE	967574776	9.31	4131	-0.095	-0.061	0.100	0.155	268.247603	-32.327143	359.03	2289.48
6	GUIDE	967574992	9.13	4156	0.104	0.087	0.077	0.129	268.024577	-32.877886	2046.15	1048.44
7	GUIDE	967576384	9.54	4141	0.060	0.003	0.117	0.180	268.355757	-32.492176	1025.60	2423.83

2.4 Star Slots

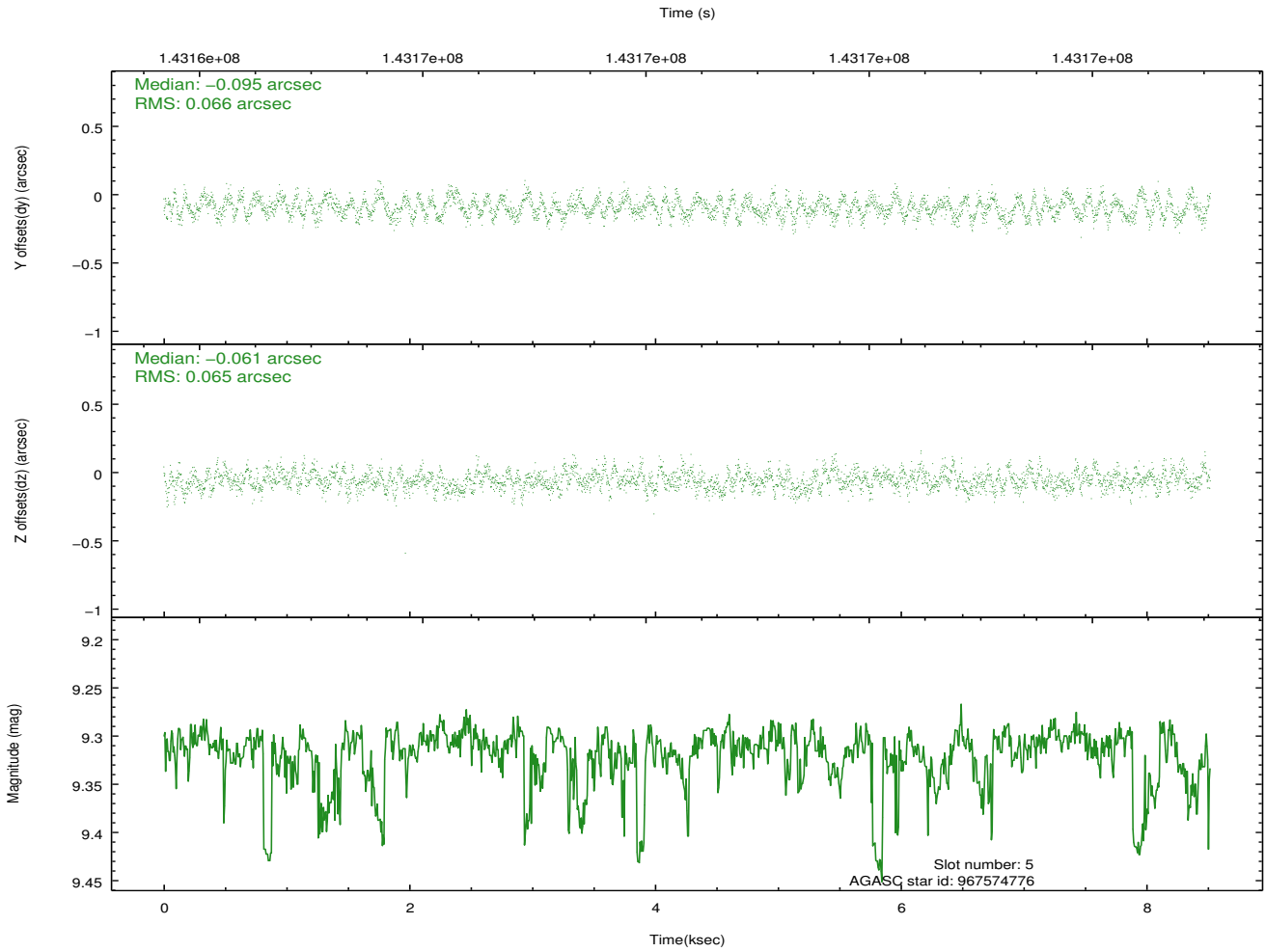
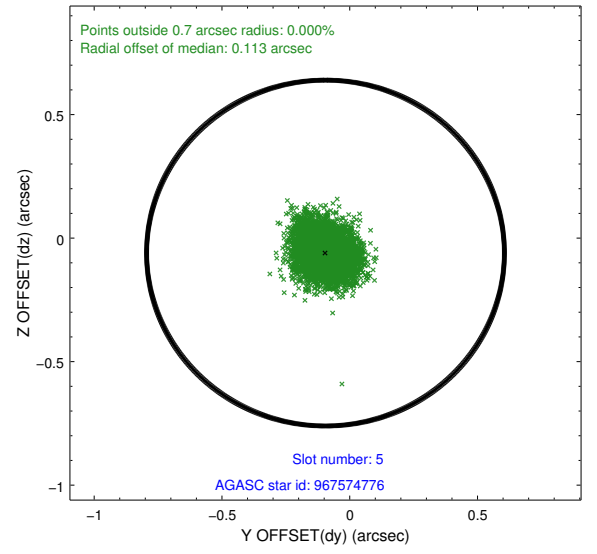
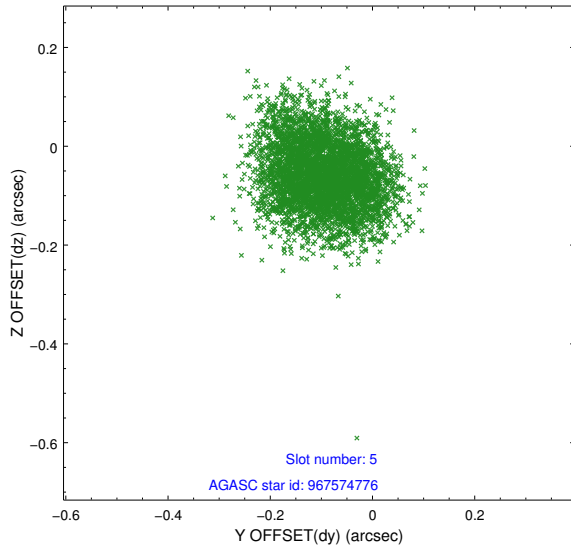
2.4.1 Slot 3



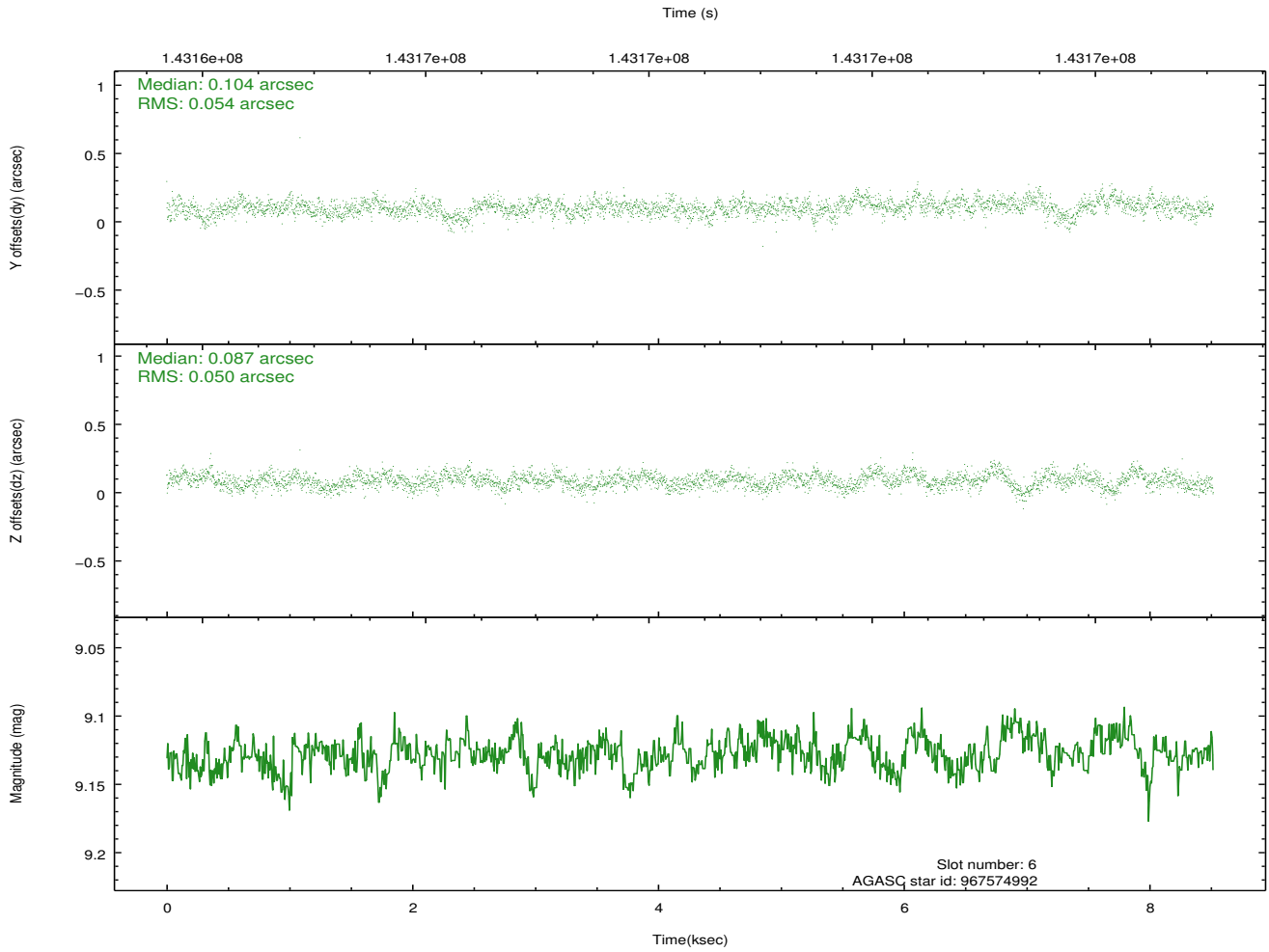
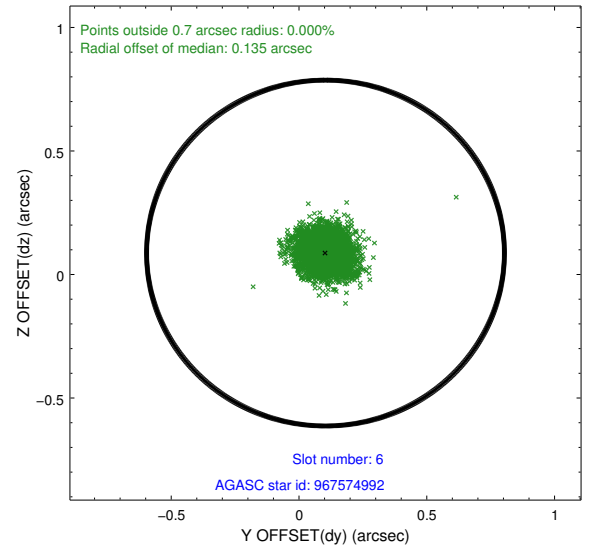
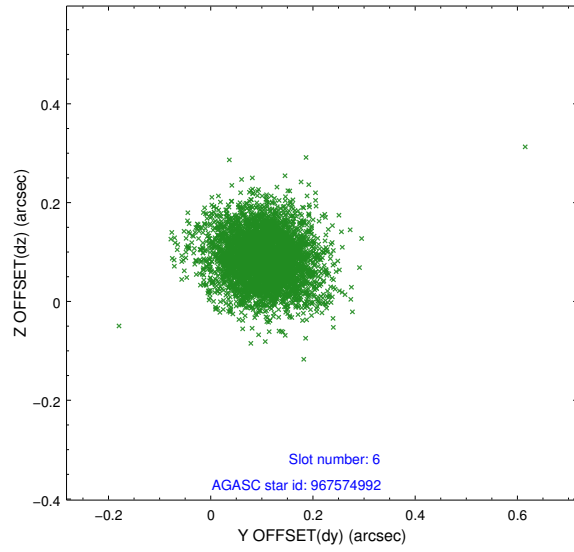
2.4.2 Slot 4



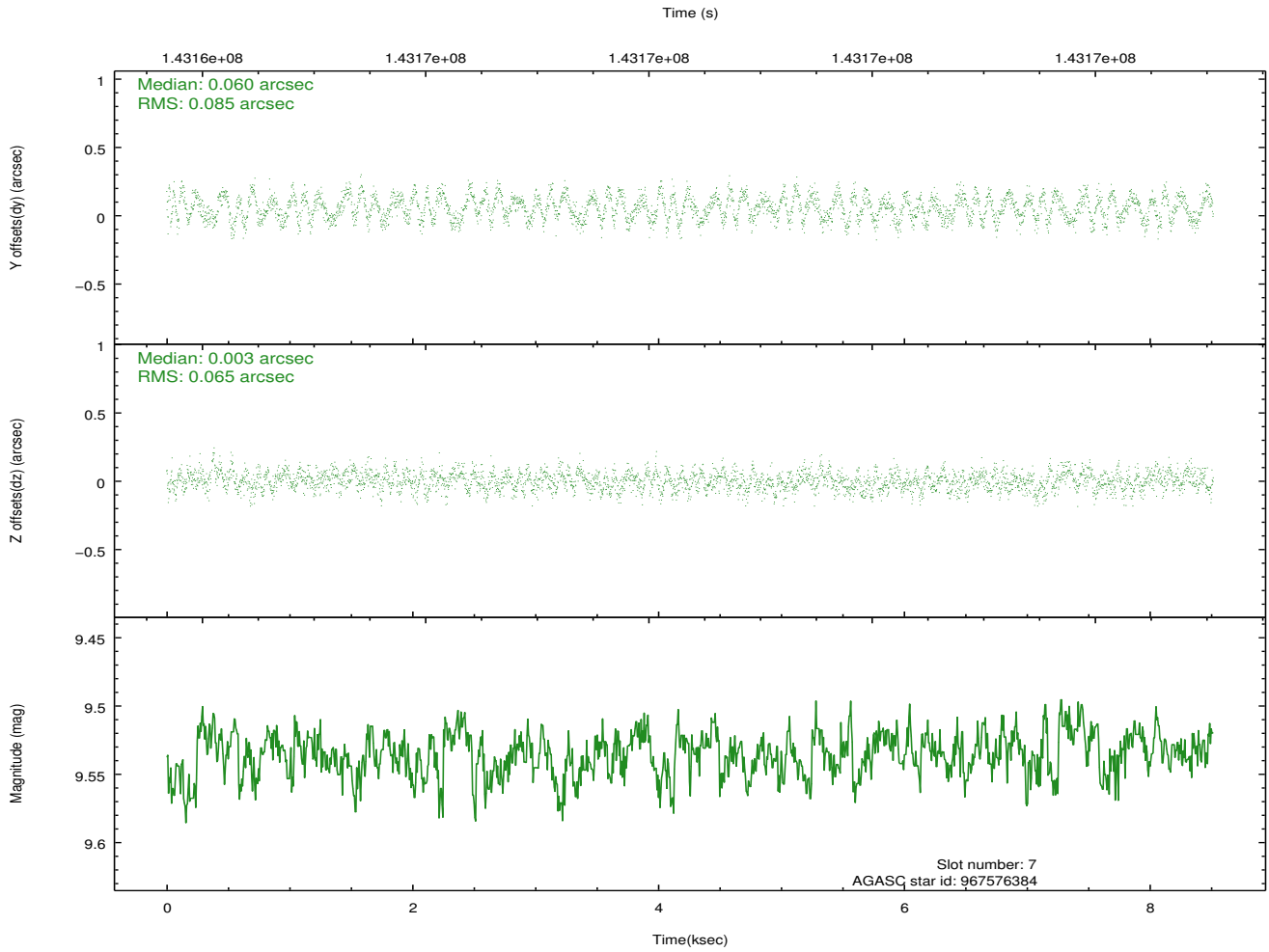
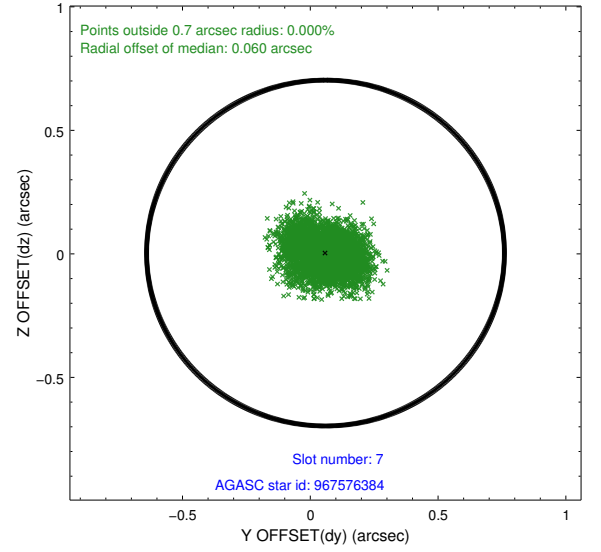
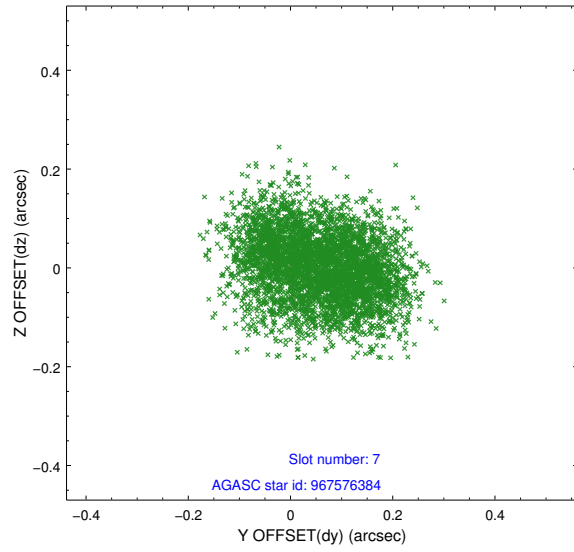
2.4.3 Slot 5



2.4.4 Slot 6

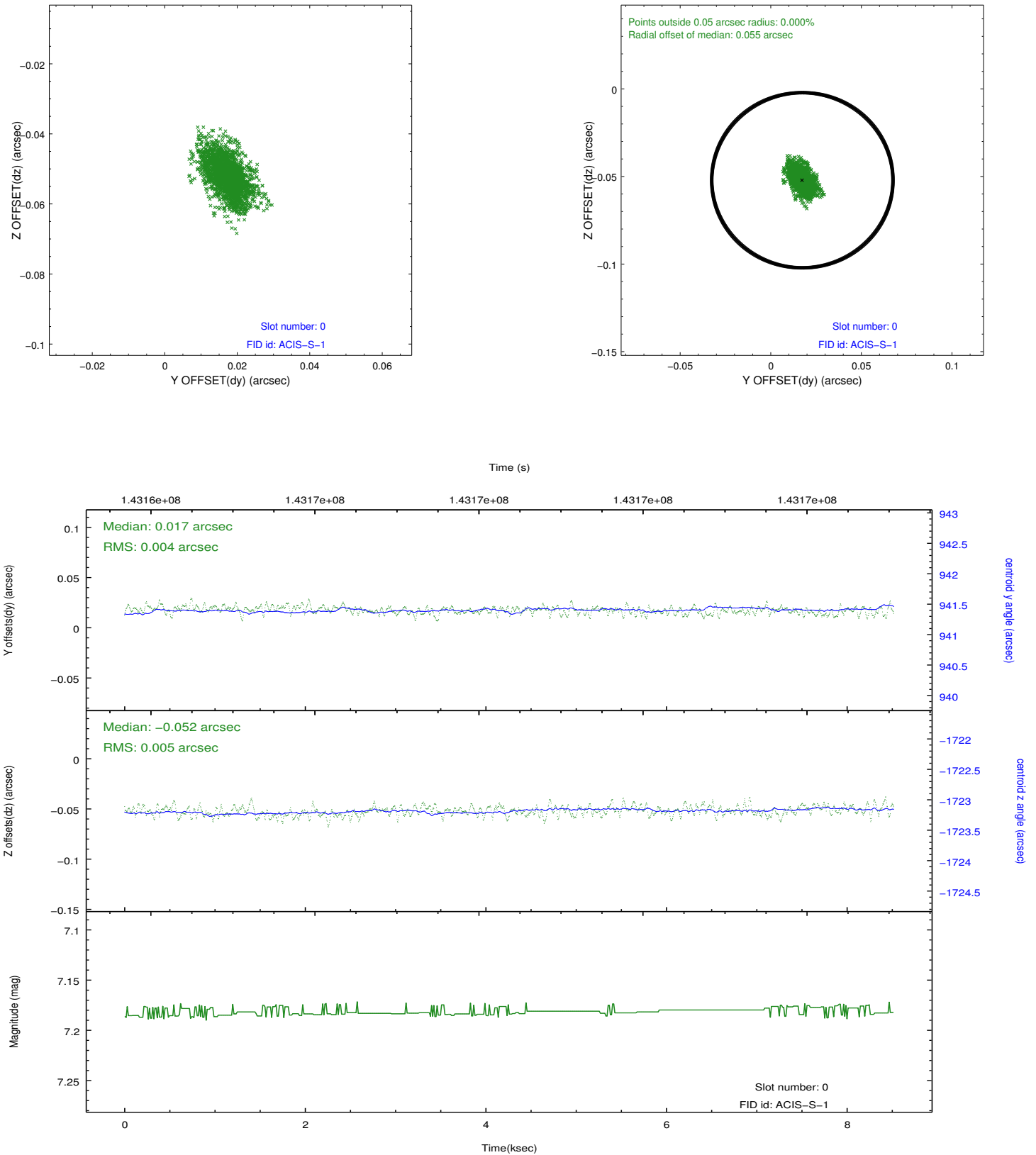


2.4.5 Slot 7

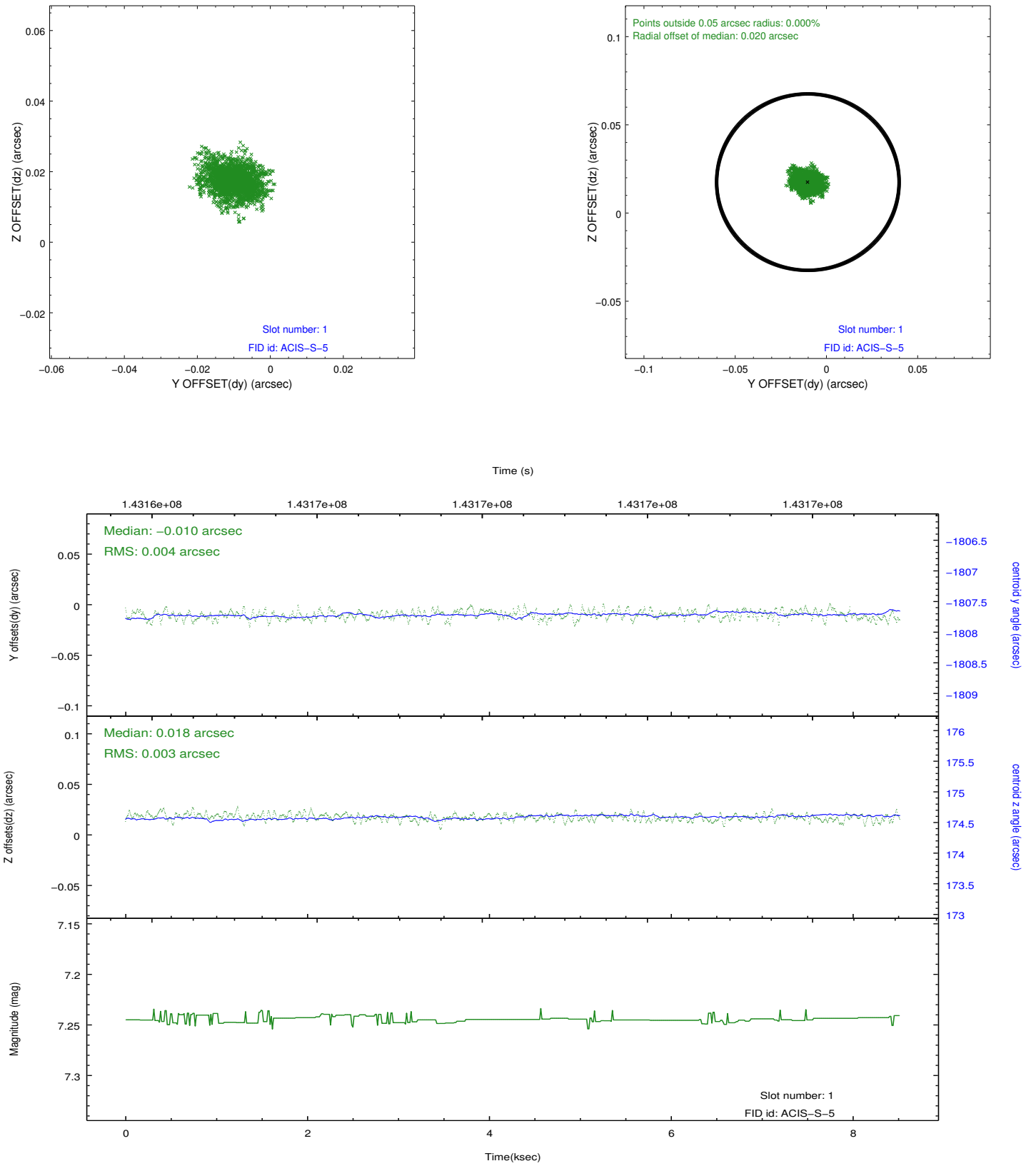


2.5 FID Slots

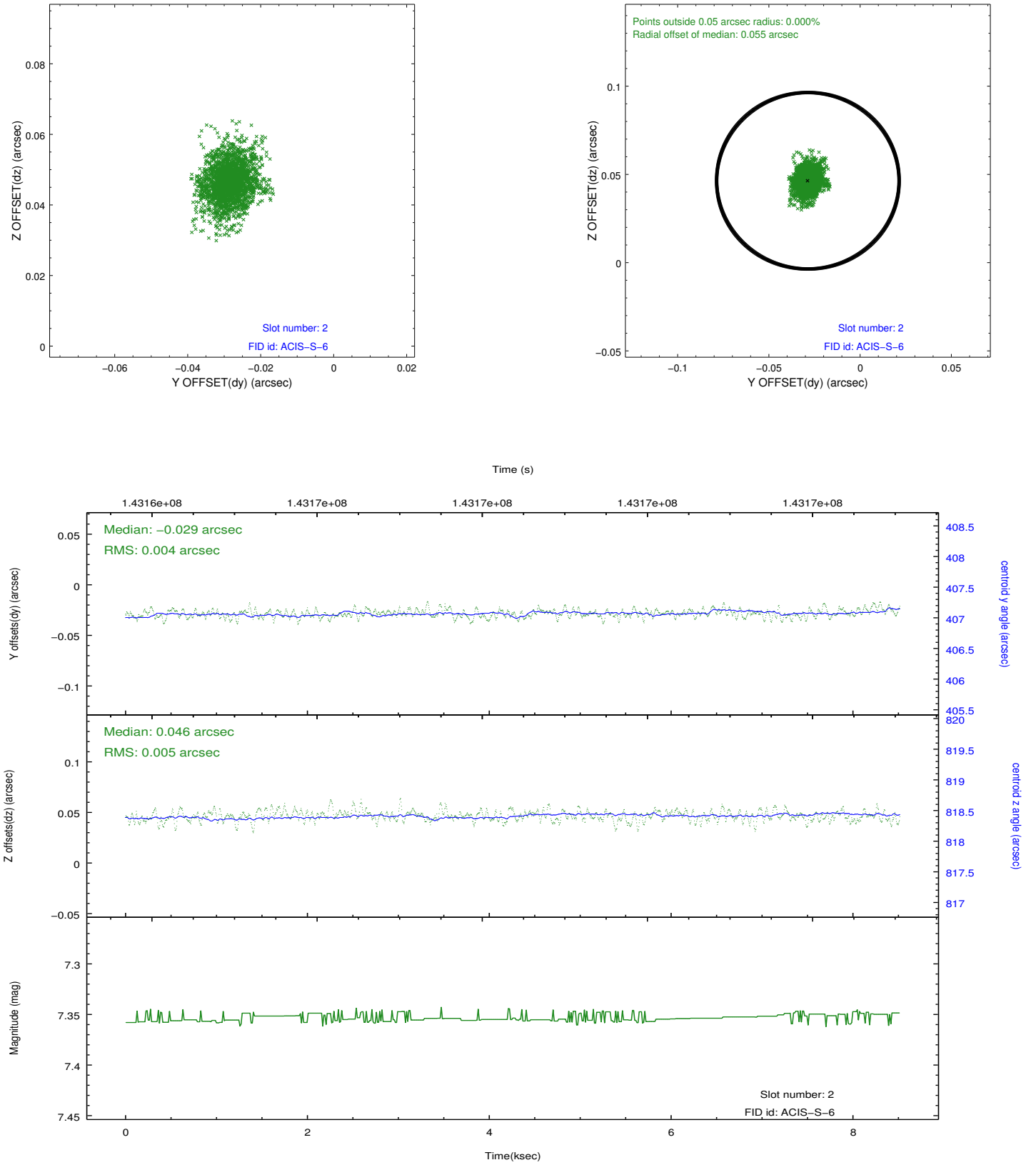
2.5.1 Slot 0



2.5.2 Slot 1



2.5.3 Slot 2



A Summary

A.1 Status

V&V Scientist	Jen Lauer
V&V Date (YYYY-MM-DD)	2012.12.06
V&V Edition	1
V&V Disposition and Status	OK
V&V Charge Time	8.516

A.2 Comments