

V&V Reference Report

L2 ASCDS Version : 8.4.5

Observation 4359 - L2 Version 3
Chandra X-Ray Center

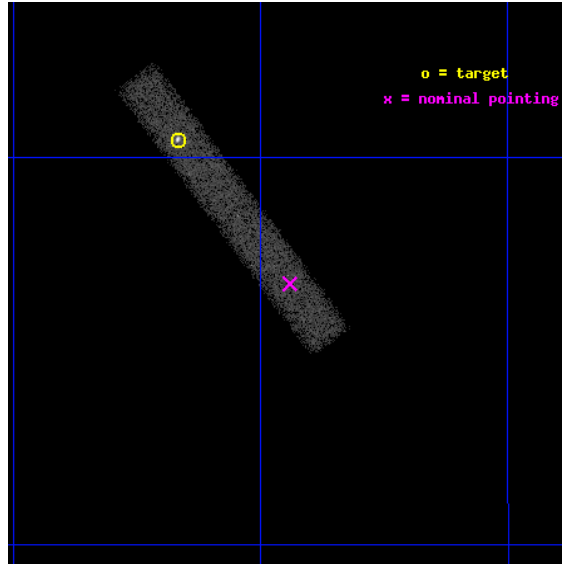
L2 Processing Date : Oct 13 2012

Contents

1	Front	2
2	OBI	3
2.1	OBI	3
2.1.1	Images	3
2.1.2	Bias	3
2.1.3	Parameters	4
2.1.4	Events	4
2.2	Compared Parameters	5
2.3	Aspect	6
2.4	Star Slots	9
2.4.1	Slot 3	9
2.4.2	Slot 4	10
2.4.3	Slot 5	11
2.4.4	Slot 6	12
2.5	FID Slots	13
2.5.1	Slot 0	13
2.5.2	Slot 1	14
2.5.3	Slot 2	15
A	Summary	16
A.1	Status	16
A.2	Comments	16

1 Front

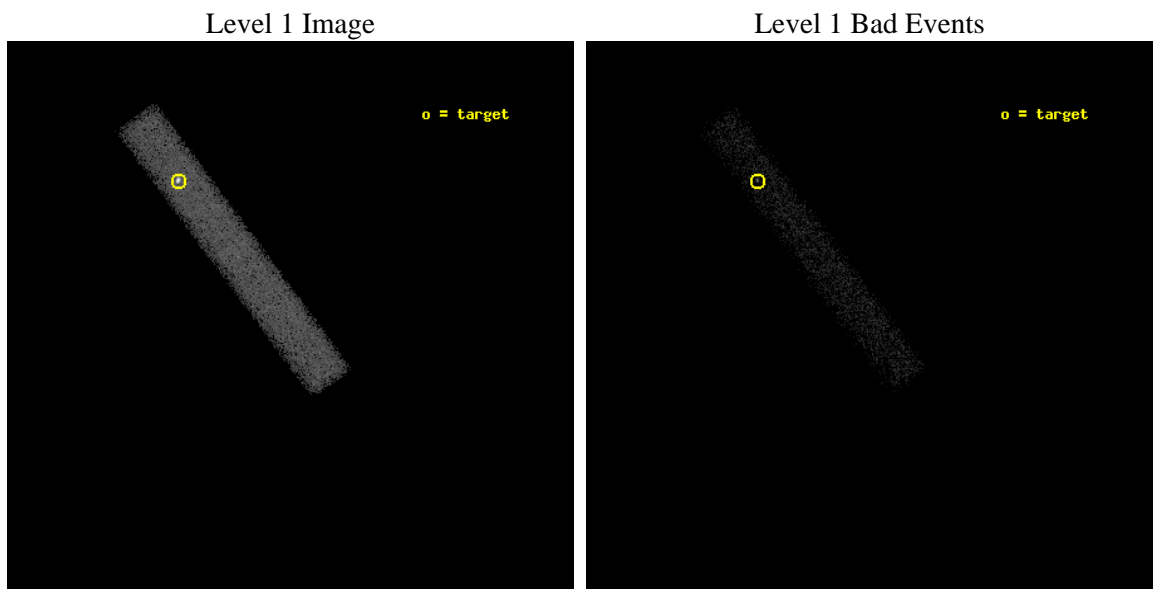
seq_num	300068	Sequence number
obs_id	4359	Observation id
title	FLARES, MAGNETIC RECONNECTIONS AND ACCRETION DISK VISCOSITY	Propos
observer	DR. WILLIAM WELSH	Principal investigator
object	EM CYG	Source name
dtcycle	0	
cycle	P	events from which exps? Prim/Second/Both
ra_targ	294.667083	Observer's specified target RA [deg]
dec_targ	30.507778	Observer's specified target Dec [deg]
ra_nom	294.61037403662	Nominal RA [deg]
dec_nom	30.445636418339	Nominal Dec [deg]
roll_nom	233.20744567758	Nominal Roll [deg]
revision	3	Processing version of data
ontime	25025.159332871	Sum of GTIs [s]
livetime	22696.498578697	Livetime [s]
ontime7	25025.159332871	Sum of GTIs [s]
l2events	23767	Number of level 2 events



2 OBI

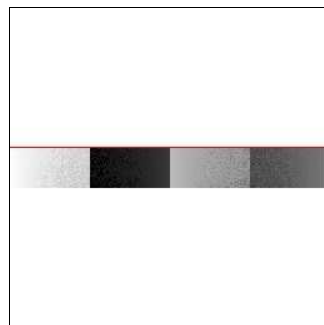
2.1 OBI

2.1.1 Images



2.1.2 Bias

Chip 7



2.1.3 Parameters

obi_num	1	Obi number	sched_exp_time	25000.000000	[s] Scheduled observation exposure time
ascdsver	8.4.5	Processing system revision	ontime	25025.159332871	Sum of GTIs [s]
caldsver	4.5.2	 	ontime7	25025.159332871	Sum of GTIs [s]
date	2012-10-13T05:14:24	Date and time of file creation	l1events	39519	Number of level 1 events
revision	3	Processing version of data			

2.1.4 Events

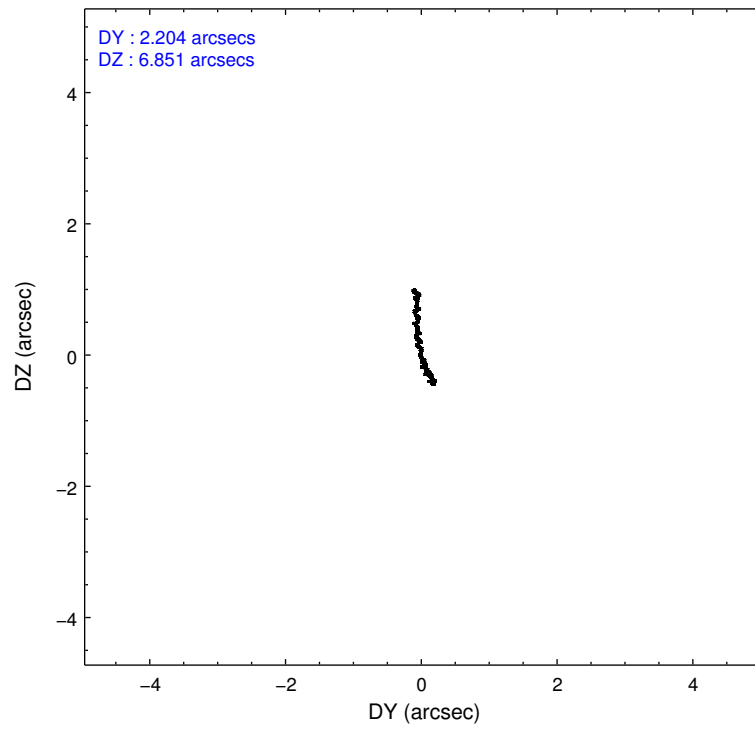
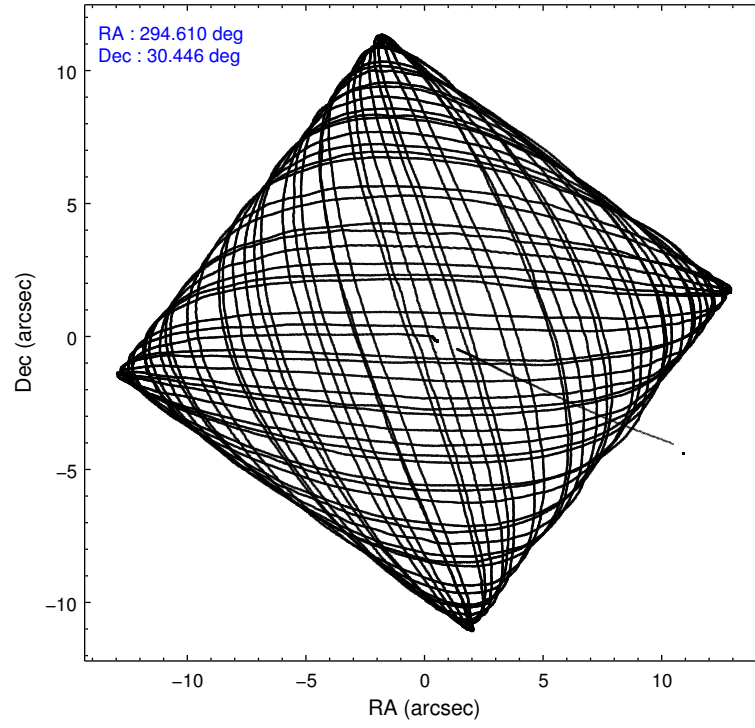
	ccd 7
level 1 events	39519
rejected events	15163
rejected %	38%

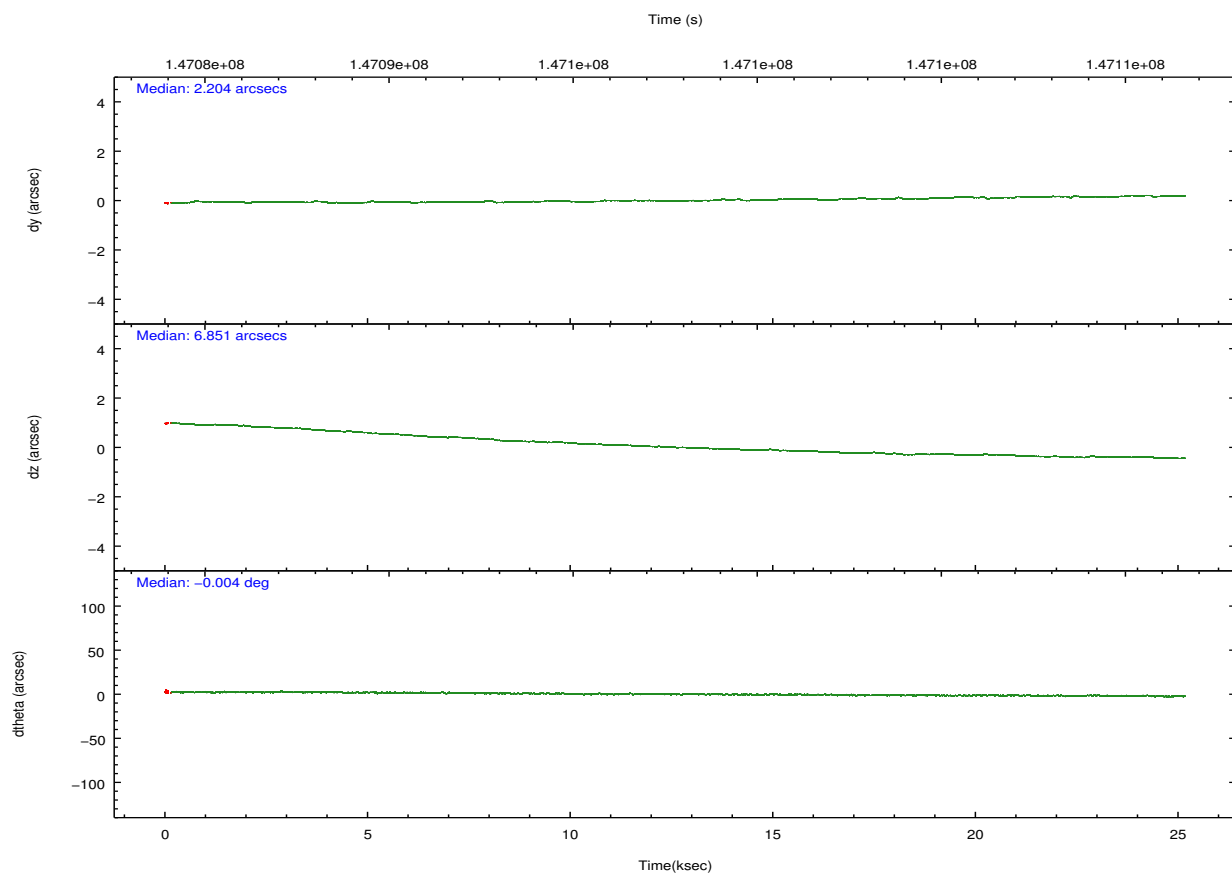
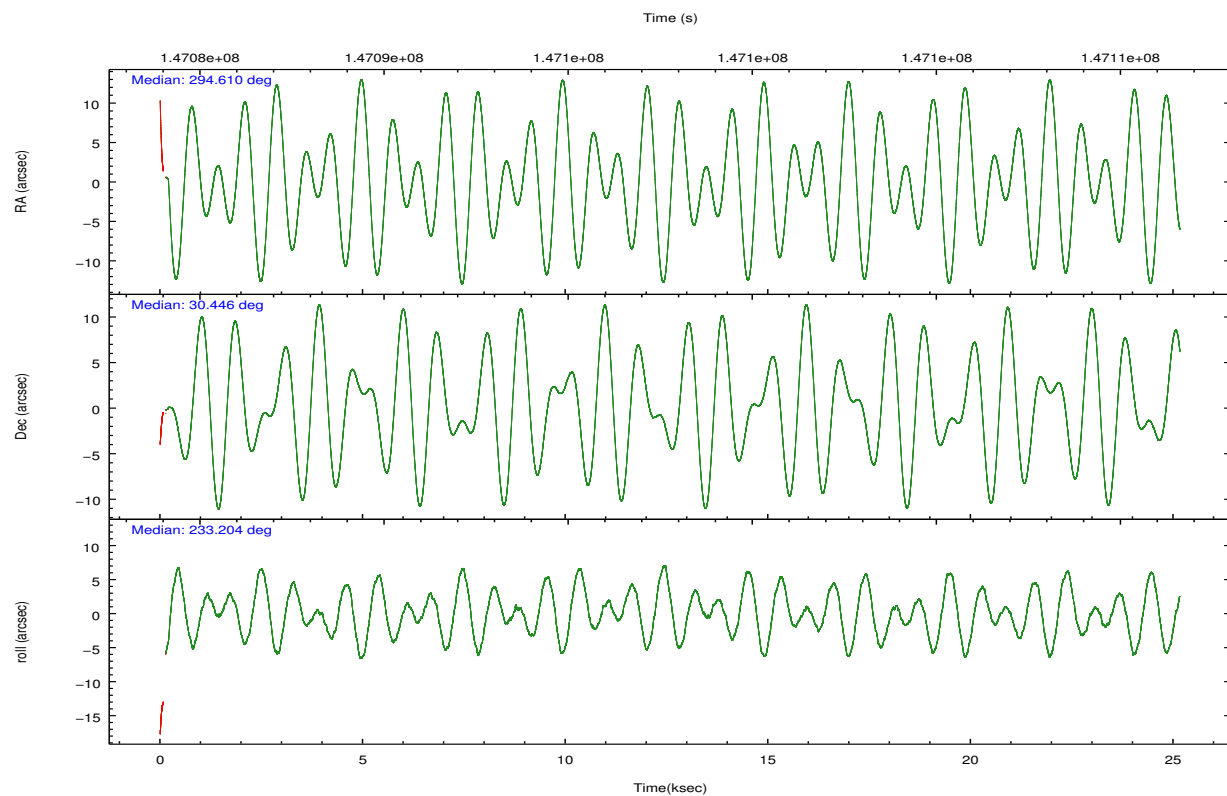
	ccd 7
grade 0 events	4075
	10%
grade 1 events	33
	0%
grade 2 events	4985
	12%
grade 3 events	2821
	7%
grade 4 events	2706
	6%
grade 5 events	2543
	6%
grade 6 events	10348
	26%
grade 7 events	12008
	30%

2.2 Compared Parameters

Parameter	Planned	Actual	Parameter	Planned	Actual
Instrument	ACIS	ACIS	Obspar format version number	7	7
Detector	ACIS-7	ACIS-7	Obspar file type	PREDICTED	ACTUAL
Grating	NONE	NONE	Obspar update status	NONE	UPDATED
Data mode	FAINT	FAINT	Number of optional ACIS chips dropped	0	0
Observation mode	POINTING	POINTING	On-chip summing requested	N	N
[deg] Pointing RA	294.613704	294.6103740366203	Subarray requested	CUSTOM	1/8
[deg] Pointing Dec	30.472722	30.44563641833912	Subarray start row	449	449
[deg] Pointing Roll	233.049132	233.2074456775844	Subarray row count	128	128
[s] Window start time (MET)	147085351.184000	147085351.184000	Alternating exposures requested	N	N
[s] Window stop time (MET)	147114443.184000	147114443.184000	[s] Primary exposure time	0.000000	0.4
[mm] SIM focus pos	-0.684267	-0.6828225247311905			
[mm] SIM defocus	0	0.001444936568705701			
[mm] SIM translation stage pos	-190.132523	-190.1400660498719			
[mm] SIM translation stage offset	0	0.00754346686406393			
[s] Observation start time (MET)	147085356.184000	147084295.57352			
Observation start date	2002-08-30T09:01:32	2002-08-30T08:44:55			
[s] Observation end time (MET)	147110356.184000	147111048.58713			
Observation end date	2002-08-30T15:58:12	2002-08-30T16:10:48			
Read mode	TIMED	TIMED			

2.3 Aspect



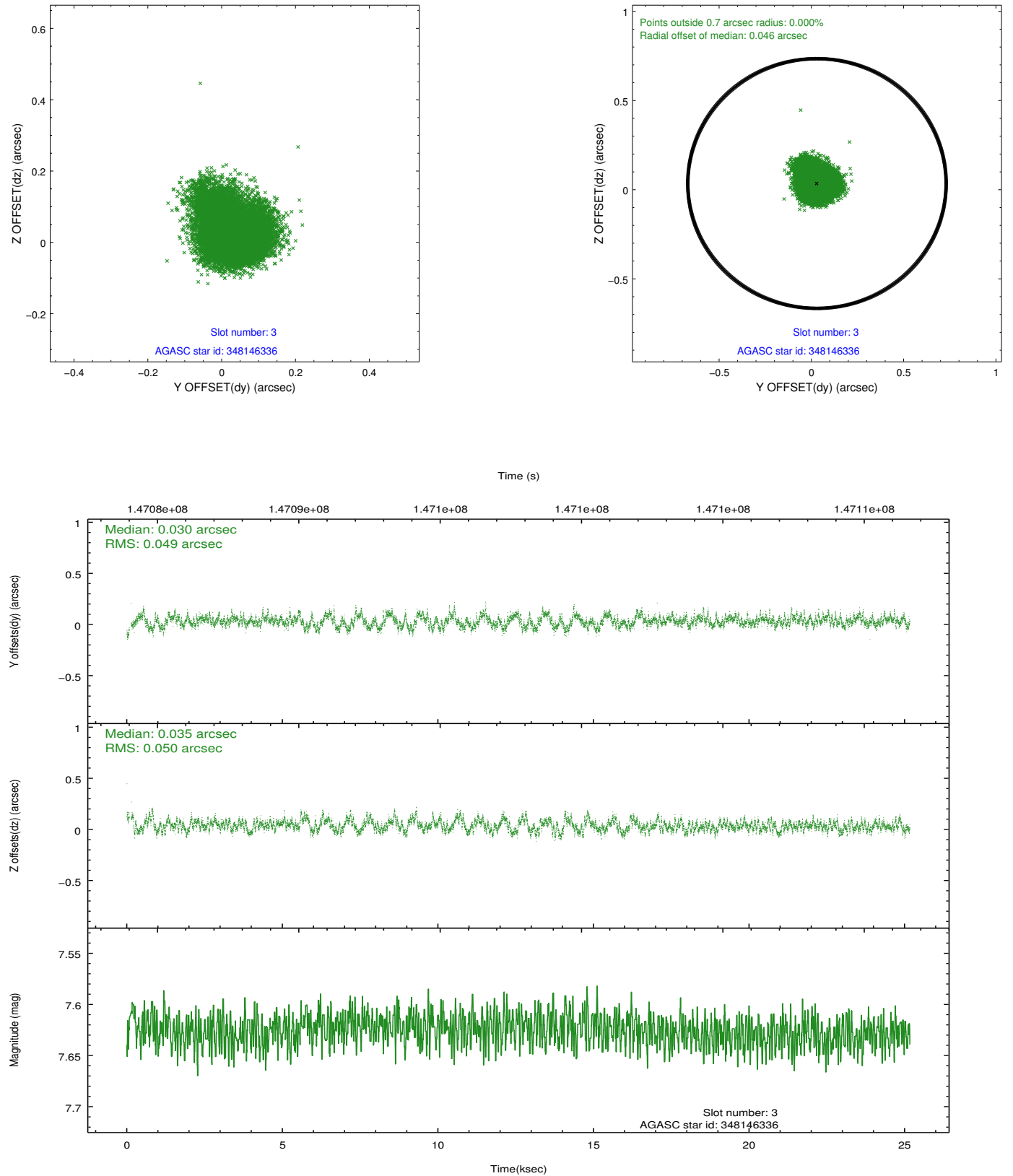


Slot Statistics

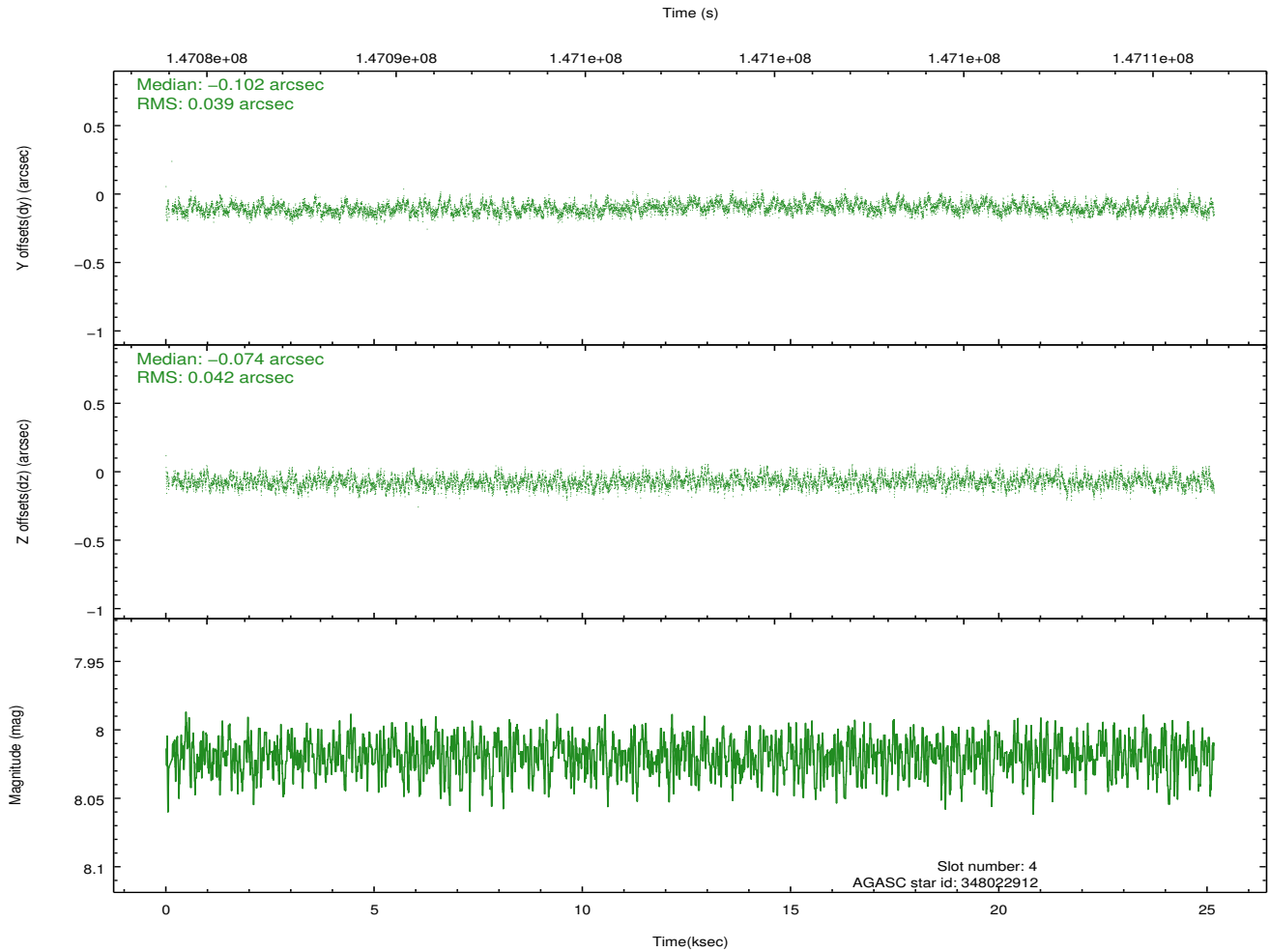
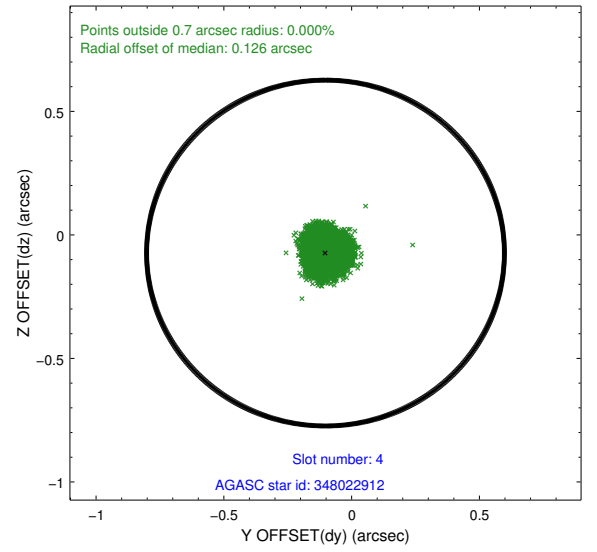
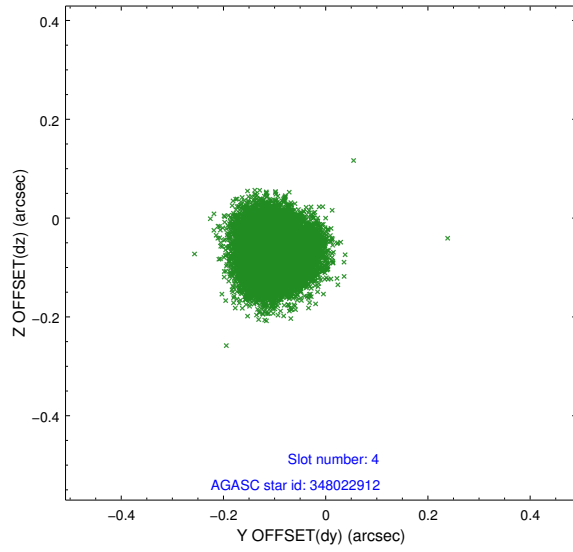
	status	id	mag	n_pts	med_dy	med_dz	drl
	FID	ACIS-S-2	7.11	6123	-0.030	0.006	0.015
	FID	ACIS-S-4	7.20	6123	-0.023	0.014	0.014
	FID	ACIS-S-5	7.24	6123	0.024	-0.010	0.019
	GUIDE	348146336	7.63	12244	0.030	0.035	0.075
	GUIDE	348022912	8.02	12245	-0.102	-0.074	0.062
	GUIDE	348024776	8.16	12244	0.000	0.045	0.057
	GUIDE	348009424	8.85	12242	0.071	-0.006	0.085
0.0000.0000.0000.0000000.00000000.000.00							

2.4 Star Slots

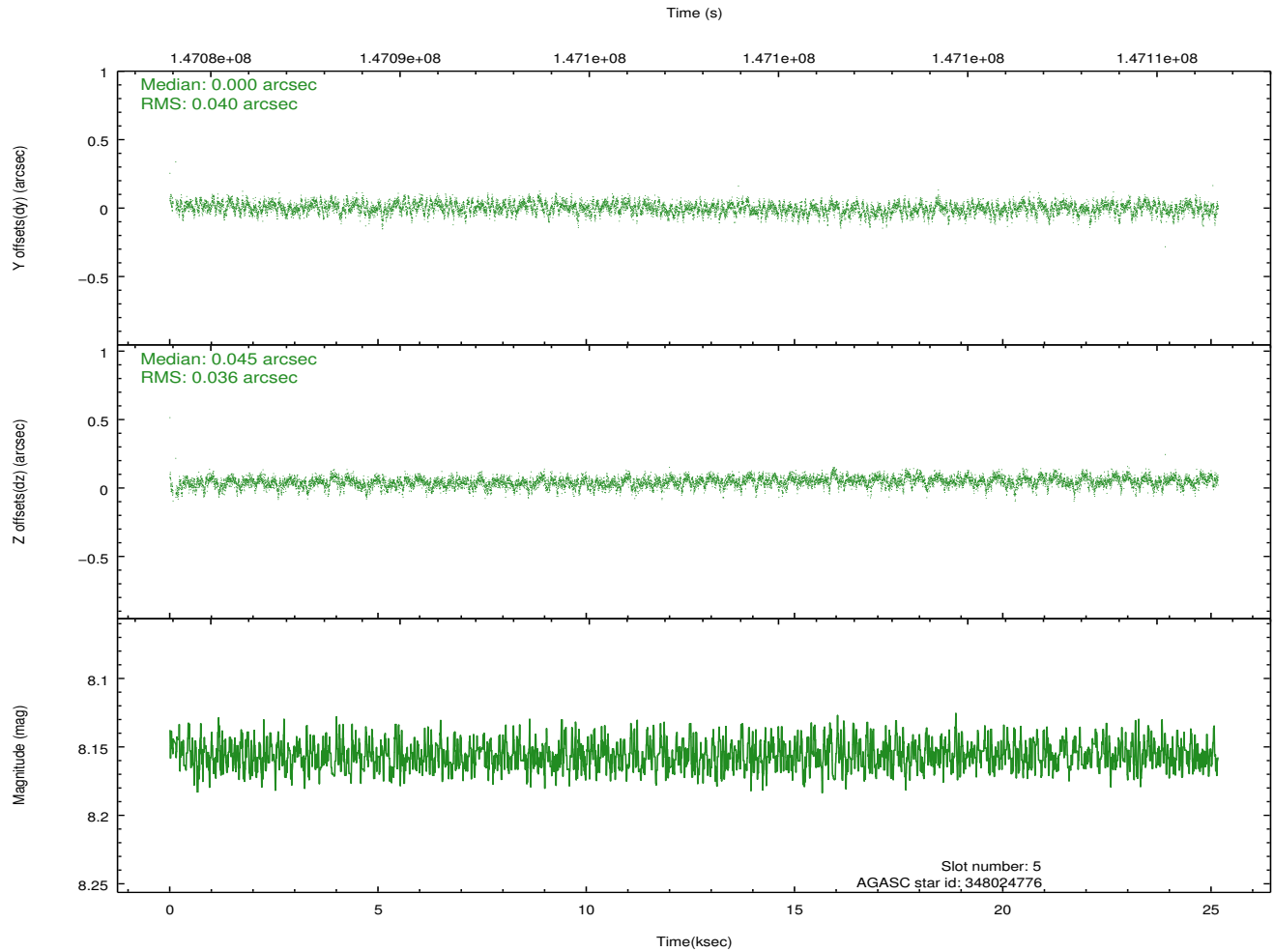
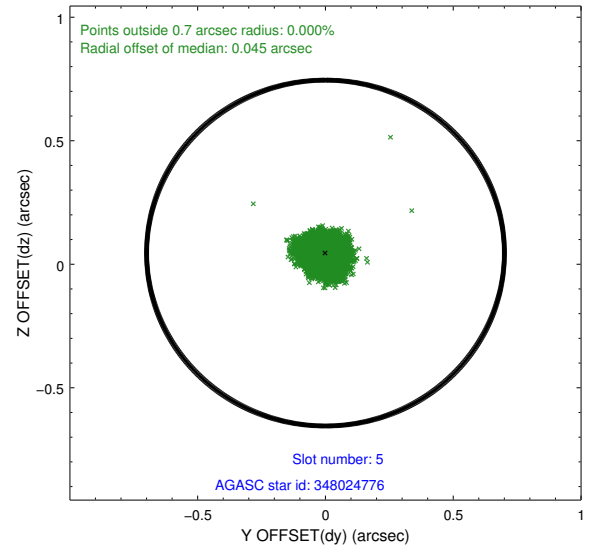
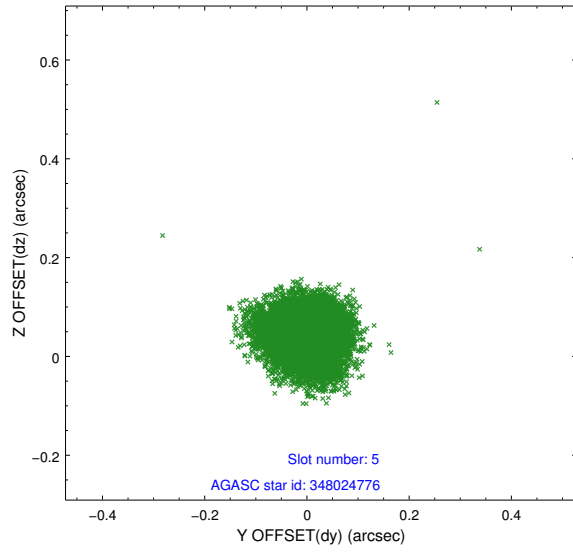
2.4.1 Slot 3



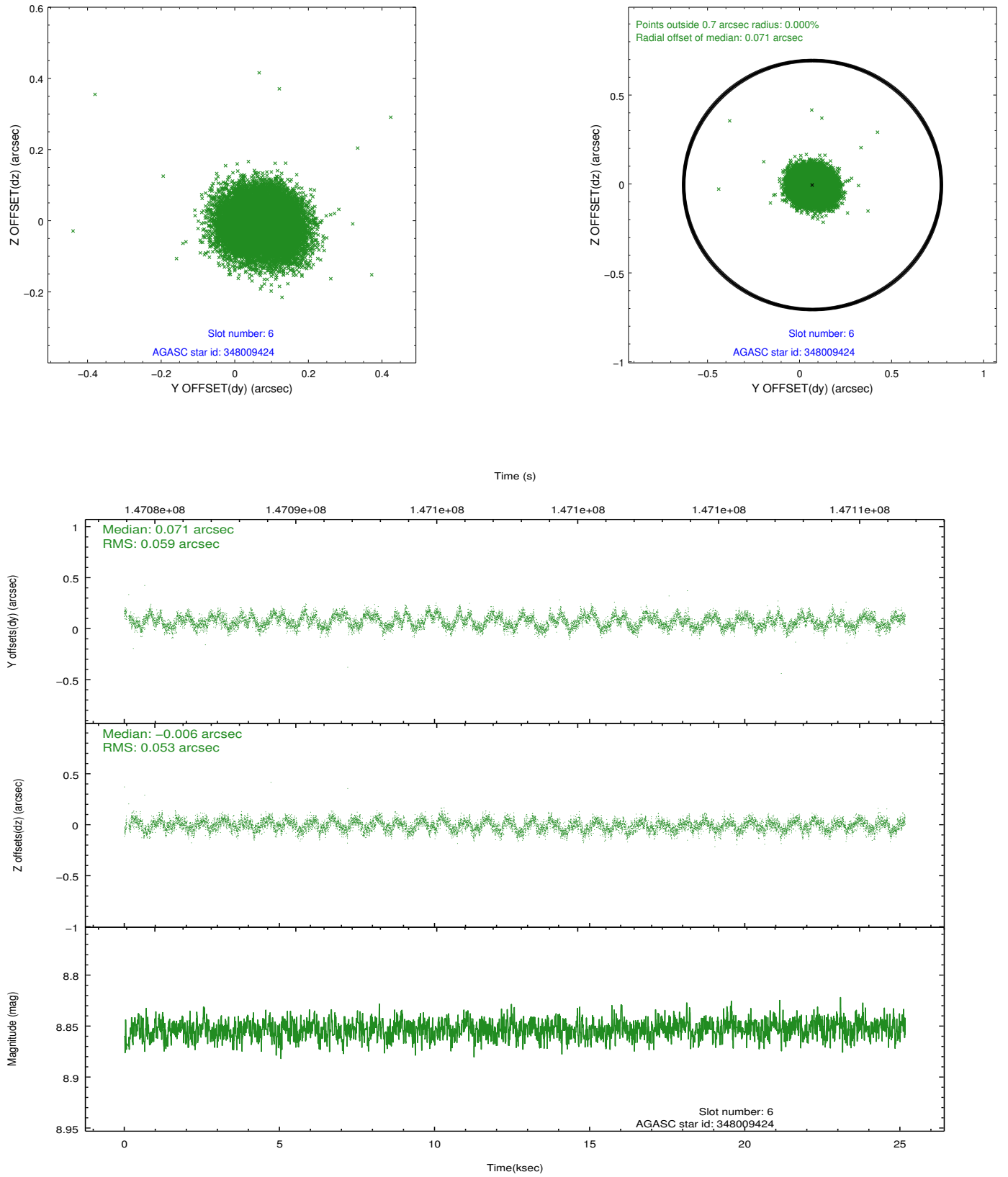
2.4.2 Slot 4



2.4.3 Slot 5

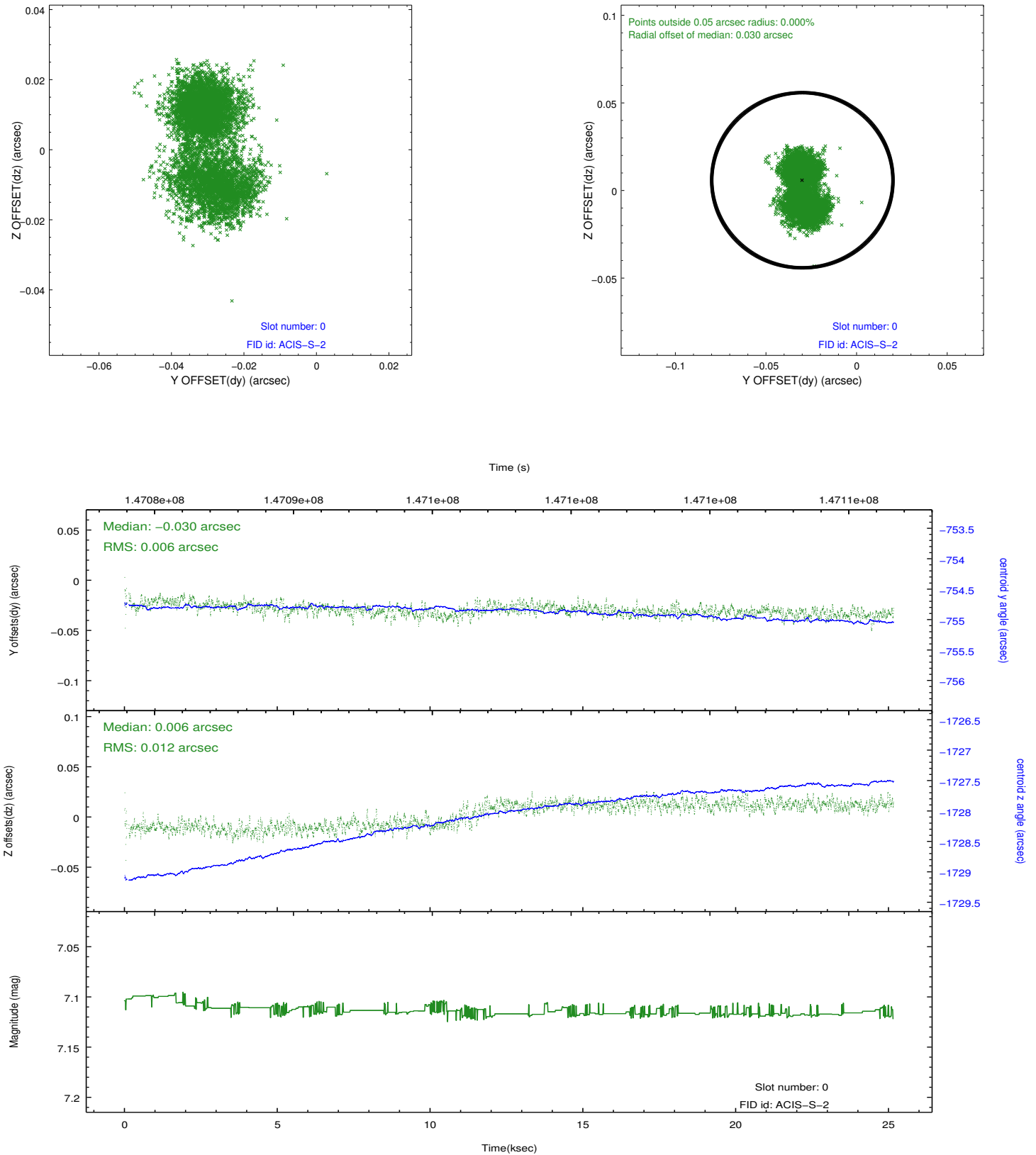


2.4.4 Slot 6

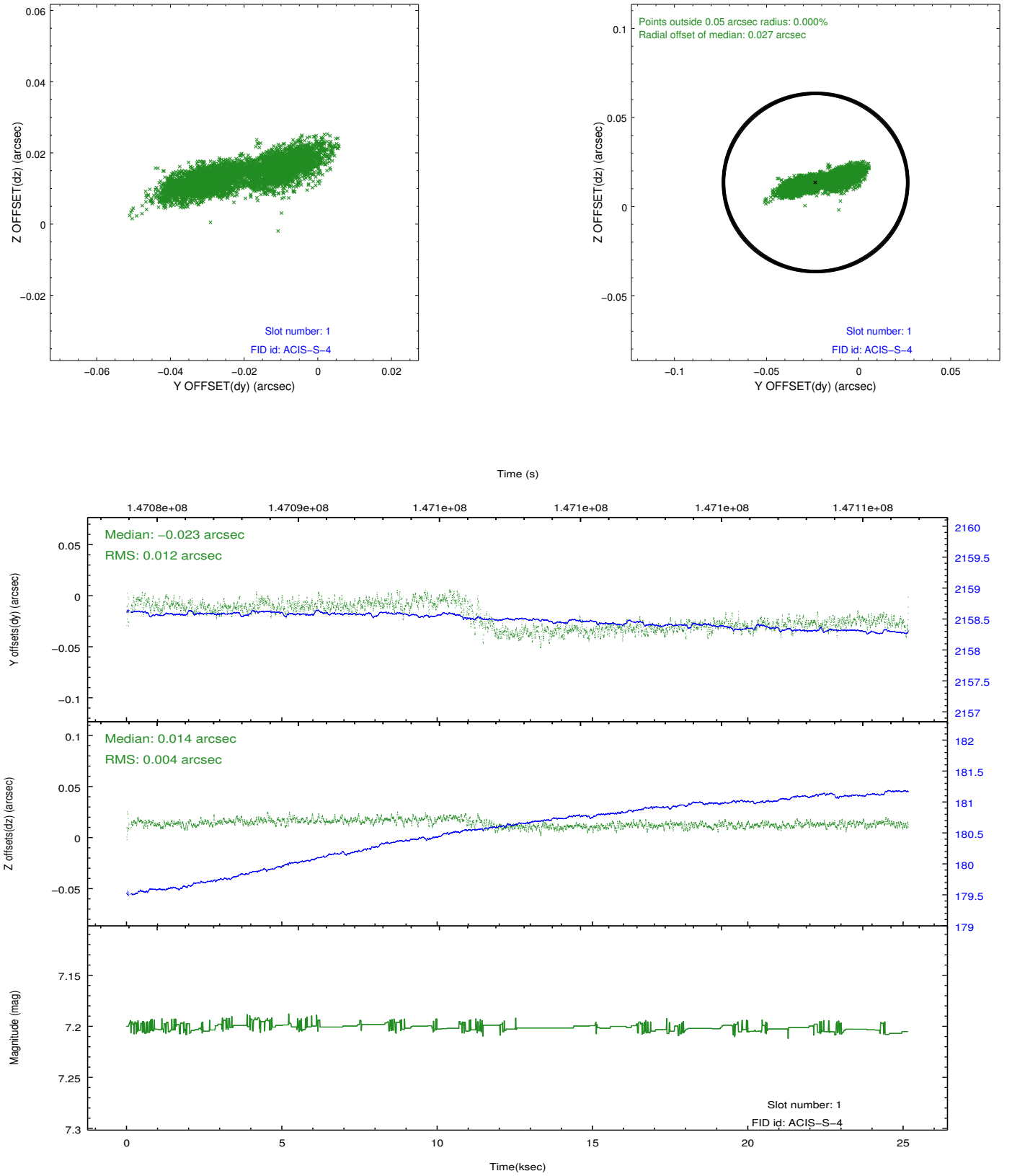


2.5 FID Slots

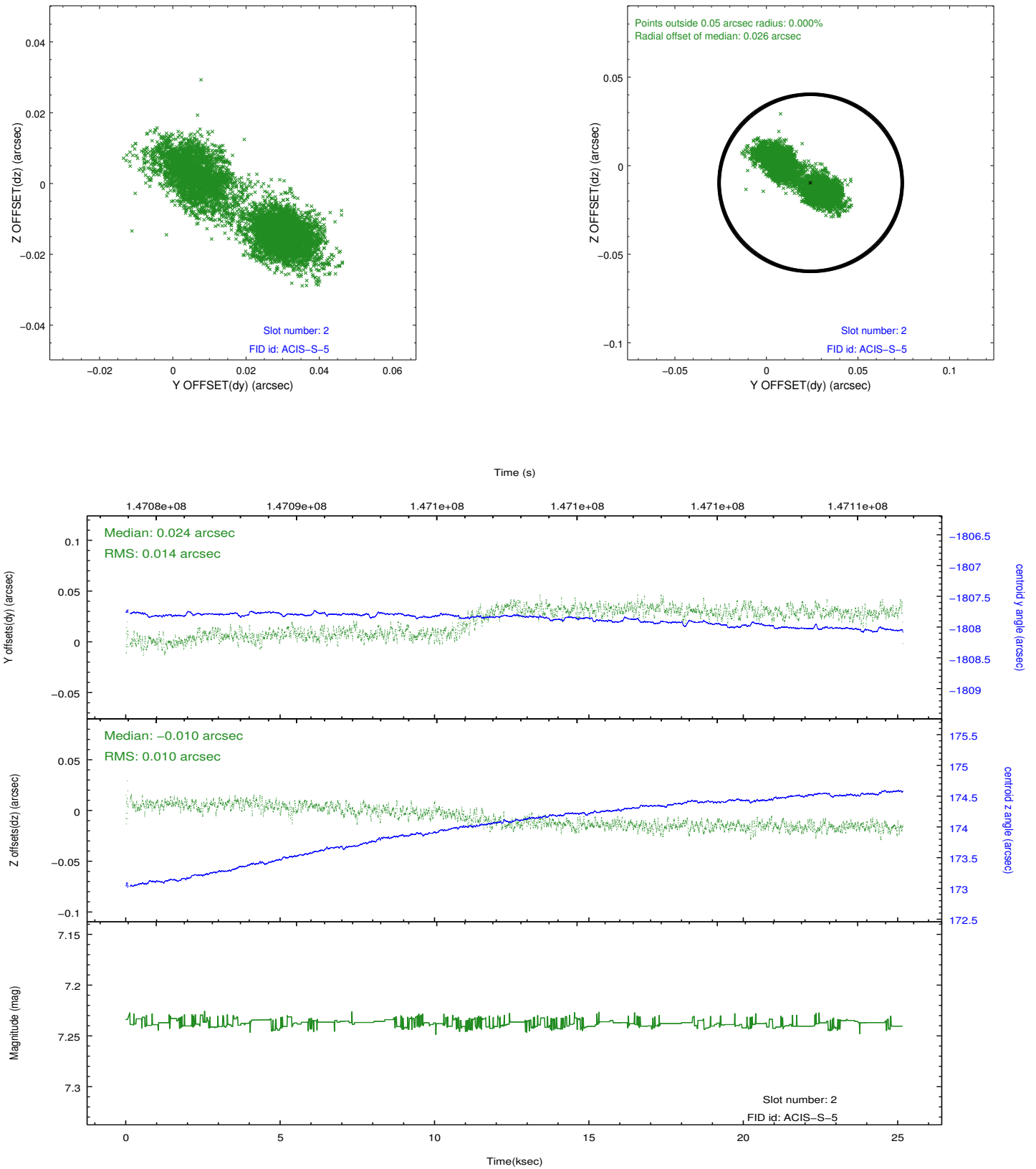
2.5.1 Slot 0



2.5.2 Slot 1



2.5.3 Slot 2



A Summary

A.1 Status

V&V Scientist	Jen Lauer
V&V Date (YYYY-MM-DD)	2012.10.22
V&V Edition	1
V&V Disposition and Status	OK
V&V Charge Time	25.025

A.2 Comments

Window constraint met. Joint Proposal: CX0-HST