

V&V Reference Report

L2 ASCDS Version : 7.6.8.1

Observation 3455 - L2 Version 001
Chandra X-Ray Center

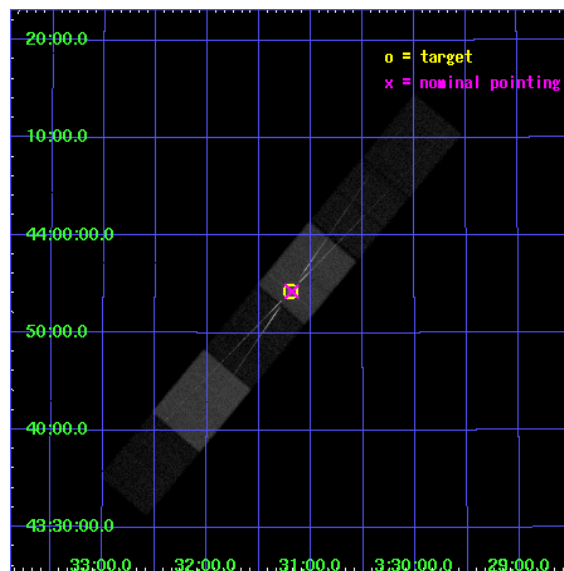
L2 Processing Date : Sep 9 2006

Contents

1	Front	2
2	OBI	3
2.1	OBI	3
2.1.1	Images	3
2.1.2	Bias	3
2.1.3	Parameters	4
2.1.4	Events	4
2.2	Compared Parameters	5
2.3	Aspect	6
2.4	Star Slots	9
2.4.1	Slot 3	9
2.4.2	Slot 4	10
2.4.3	Slot 5	11
2.4.4	Slot 6	12
2.4.5	Slot 7	13
2.5	FID Slots	14
2.5.1	Slot 0	14
2.5.2	Slot 1	15
2.5.3	Slot 2	16
3	Gratings	17
3.1	HEG Arm	17
3.2	MEG Arm	19
A	Summary	21
A.1	Status	21
A.2	Comments	21

1 Front

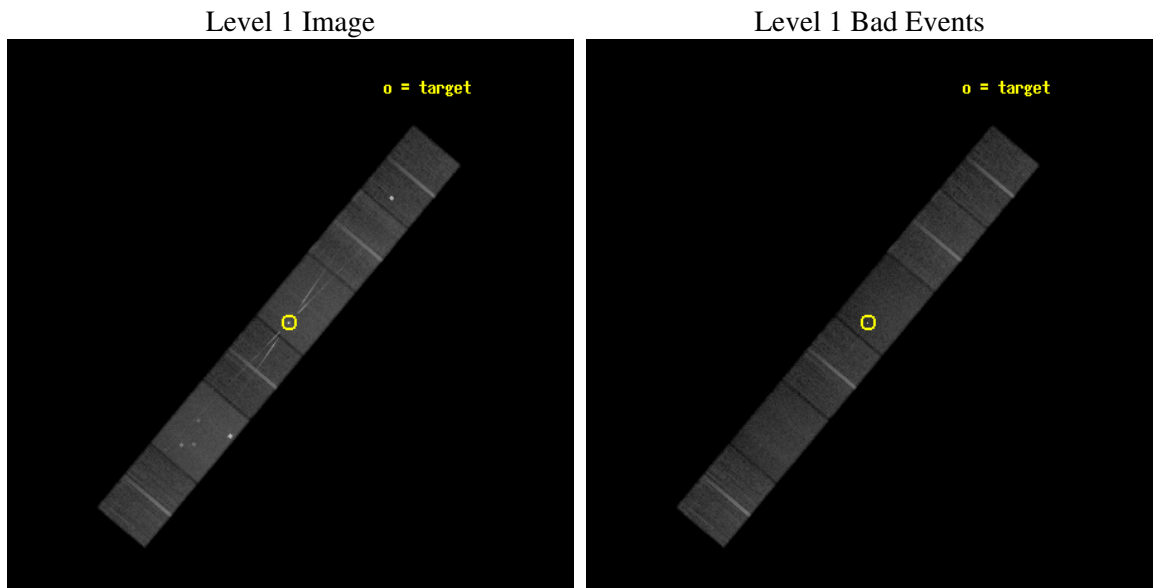
seq_num	300090
obs_id	3455
title	CHANDRA HETG SPECTROSCOPY OF GK PER IN OUTBURST
observer	Dr. Christopher Mauche
object	GK PER
dtcycle	0
cycle	P
ra_targ	52.799167
dec_targ	43.904667
ra_nom	52.796087395611
dec_nom	43.904681150908
roll_nom	309.91749051977
revision	2
ontime	34457.5
livetime	33900.981487895
ontime4	34457.5
ontime5	34457.5
ontime6	34457.5
ontime7	34457.5
ontime8	34452.418019652
ontime9	34457.5
l2events	296658



2 OBI

2.1 OBI

2.1.1 Images

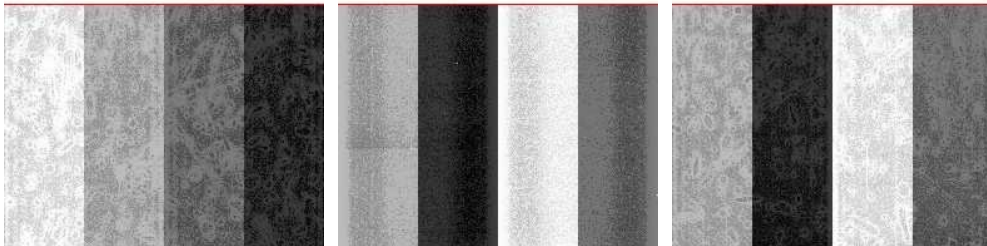


2.1.2 Bias

Chip 4

Chip 5

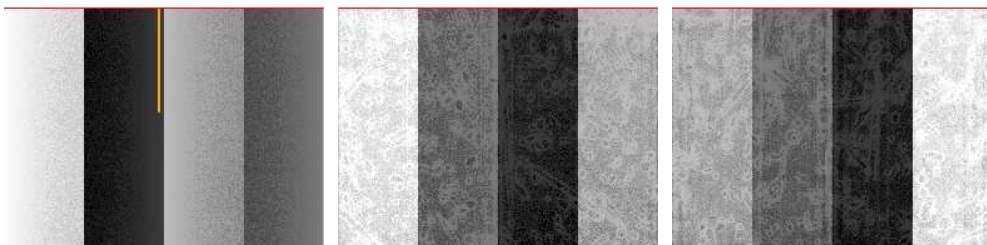
Chip 6



Chip 7

Chip 8

Chip 9



2.1.3 Parameters

obi_num	1
ascdsver	7.6.8.1
caldsver	3.2.3
date	2006-09-09T17:37:18
revision	2

sched_exp_time	34307.860000
ontime	34575.483114779
ontime4	34575.483084857
ontime5	34575.483114779
ontime6	34575.483114779
ontime7	34575.483114779
ontime8	34570.401134431
ontime9	34575.483114779
l1events	1304117

2.1.4 Events

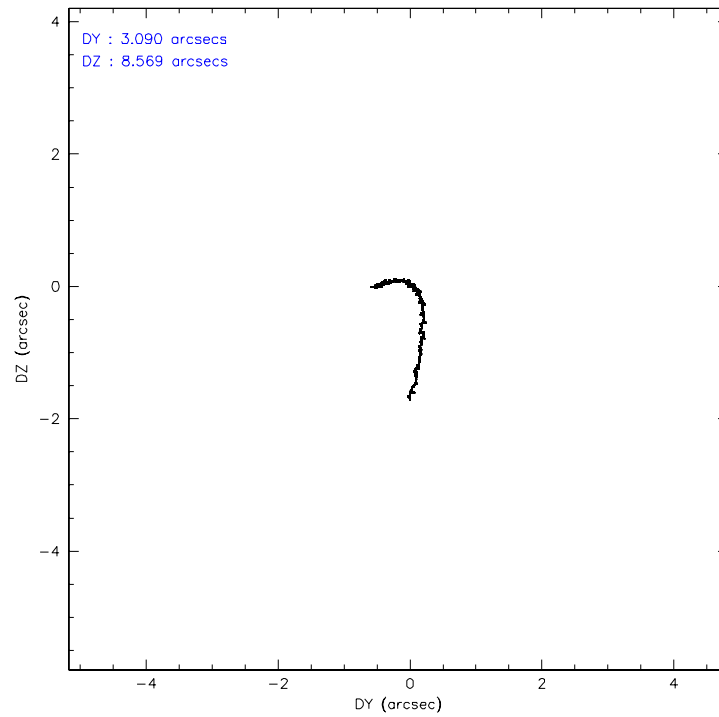
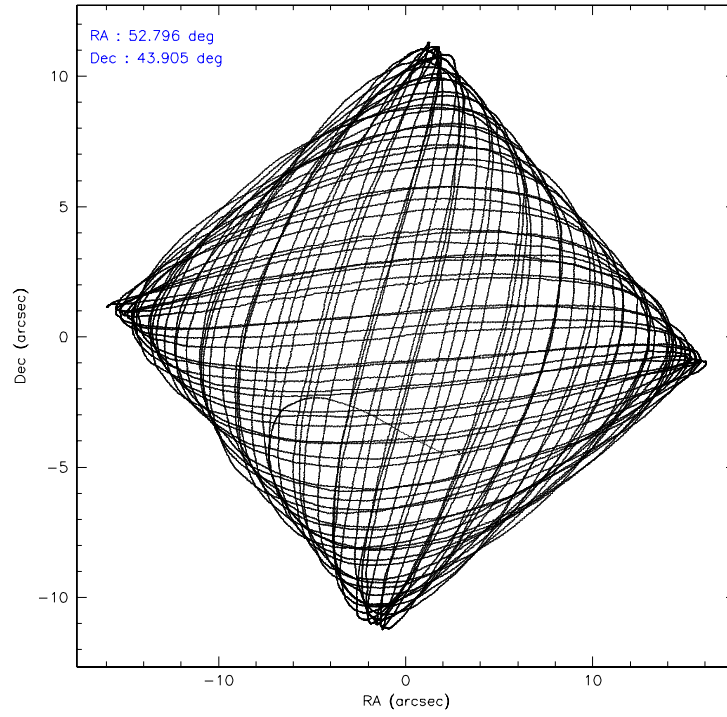
	ccd 4	ccd 5	ccd 6	ccd 7	ccd 8	ccd 9
level 1 events	194649	258524	187172	251891	225955	185926
rejected events	173302	137453	155227	140249	178925	152443
rejected %	89%	53%	82%	55%	79%	81%

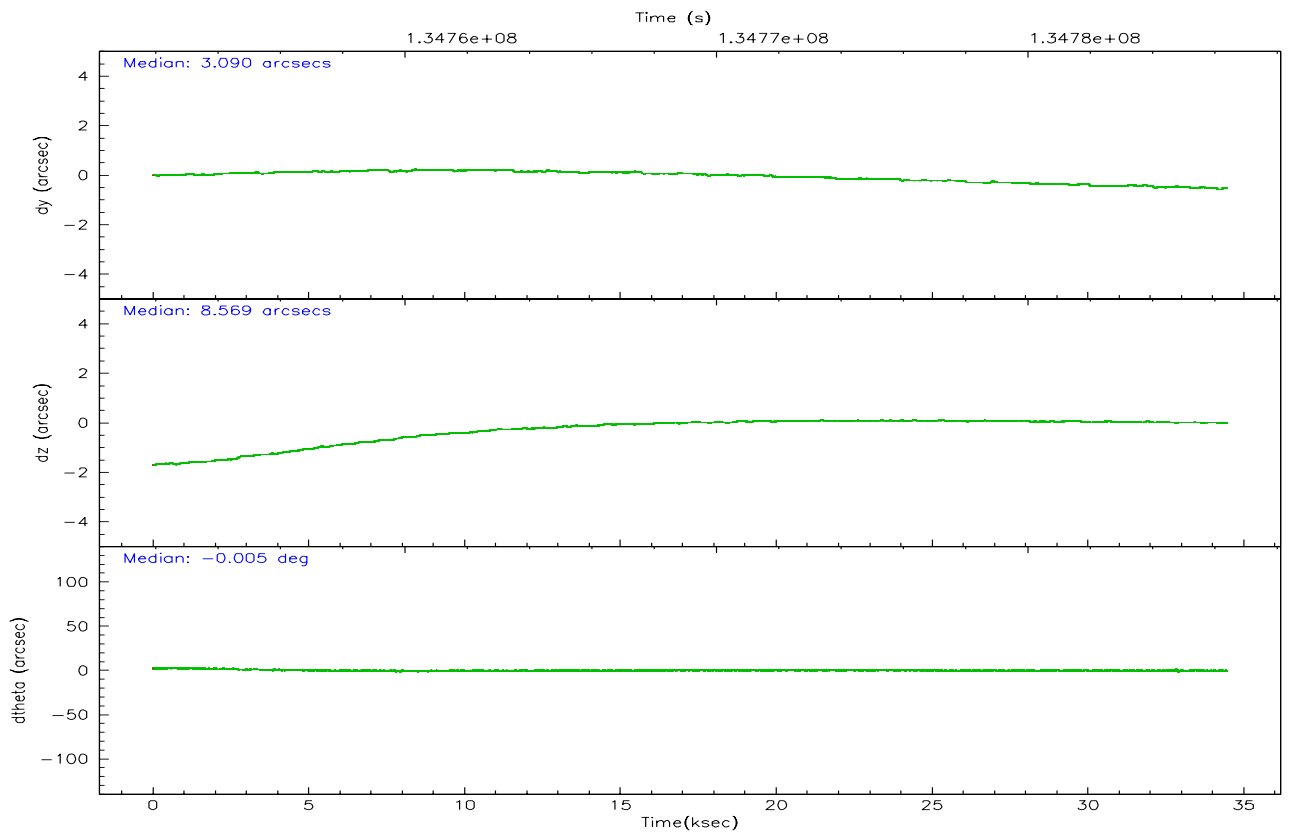
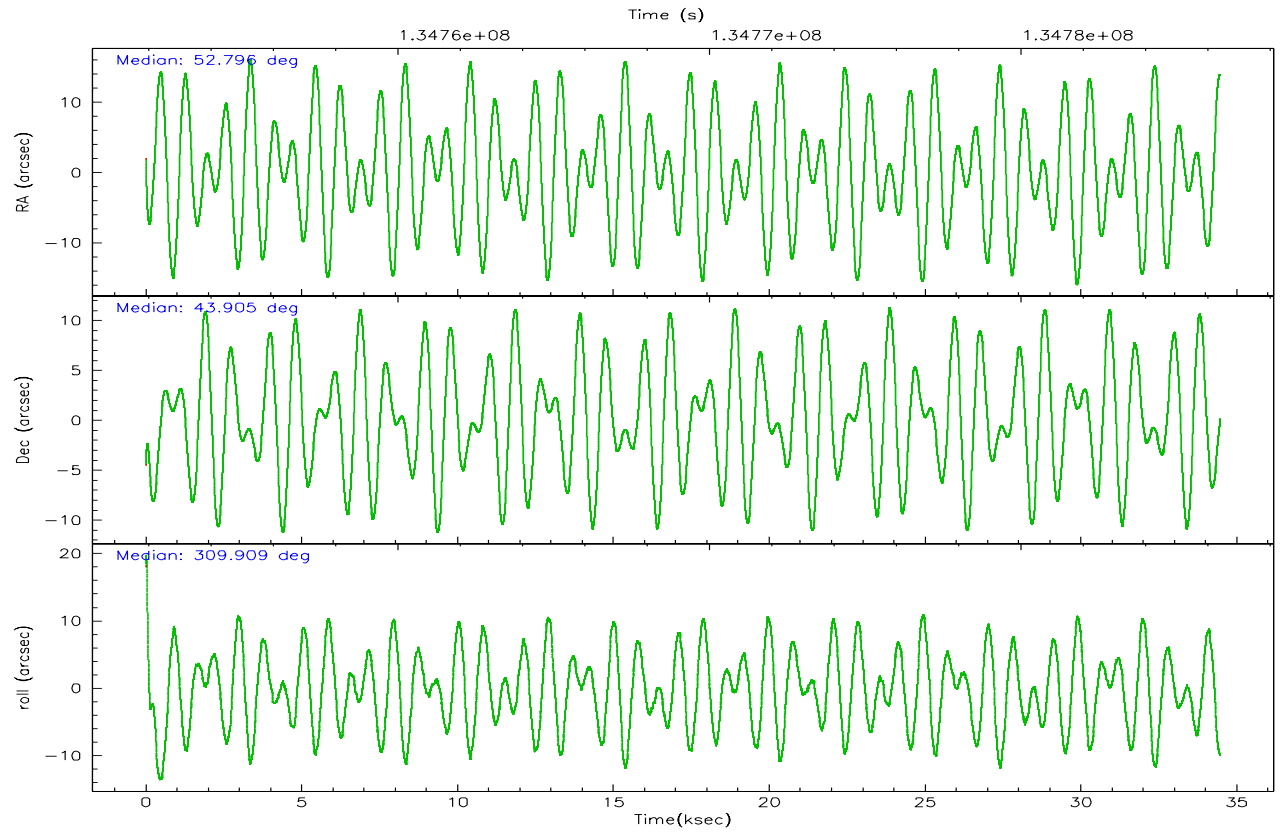
	ccd 4	ccd 5	ccd 6	ccd 7	ccd 8	ccd 9
grade 0 events	8369	21371	14923	9534	14964	17628
	4%	8%	7%	3%	6%	9%
grade 1 events	91	321	128	359	107	73
	0%	0%	0%	0%	0%	0%
grade 2 events	5196	32887	5915	27681	10039	7279
	2%	12%	3%	10%	4%	3%
grade 3 events	2066	2966	2917	7120	5056	2263
	1%	1%	1%	2%	2%	1%
grade 4 events	2075	2864	2801	6952	4674	2201
	1%	1%	1%	2%	2%	1%
grade 5 events	6306	12695	7423	16912	9520	7563
	3%	4%	3%	6%	4%	4%
grade 6 events	3710	61407	5491	60721	12518	4226
	1%	23%	2%	24%	5%	2%
grade 7 events	166836	124013	147574	122612	169077	144693
	85%	47%	78%	48%	74%	77%

2.2 Compared Parameters

Parameter	Planned	Actual	Parameter	Planned	Actual
Instrument	ACIS	ACIS	Obspar format version number	6	6
Detector	ACIS-456789	ACIS-456789	Obspar file type	PREDICTED	ACTUAL
Grating	HETG	HETG	Obspar update status	NONE	UPDATED
Data mode	FAINT	FAINT	On-chip summing requested	N	N
Observation mode	POINTING	POINTING	Subarray requested	CUSTOM	CUSTOM
Pointing RA	52.760400	52.79608739561143	Subarray start row	1	1
Pointing Dec	43.913734	43.90468115090817	Subarray row count	774	774
Pointing Roll	309.785608	309.9174905197705	Alternating exposures requested	N	N
SIM focus pos (mm)	-0.684267	-0.6828225247311905	Primary exposure time	0.000000	2.5
SIM defocus (mm)	0	0.001444936568705701			
SIM translation stage pos (mm)	-187.132523	-187.1228876879999			
SIM translation stage offset (mm)	-3	-3.009634895007935			
Observation start time	134752081.184000	134751069.18097			
Observation start date	2002-04-09T15:06:57	2002-04-09T14:51:09			
Observation end time	134786389.184000	134786703.81992			
Observation end date	2002-04-10T00:38:45	2002-04-10T00:45:03			
Read mode	TIMED	TIMED			

2.3 Aspect



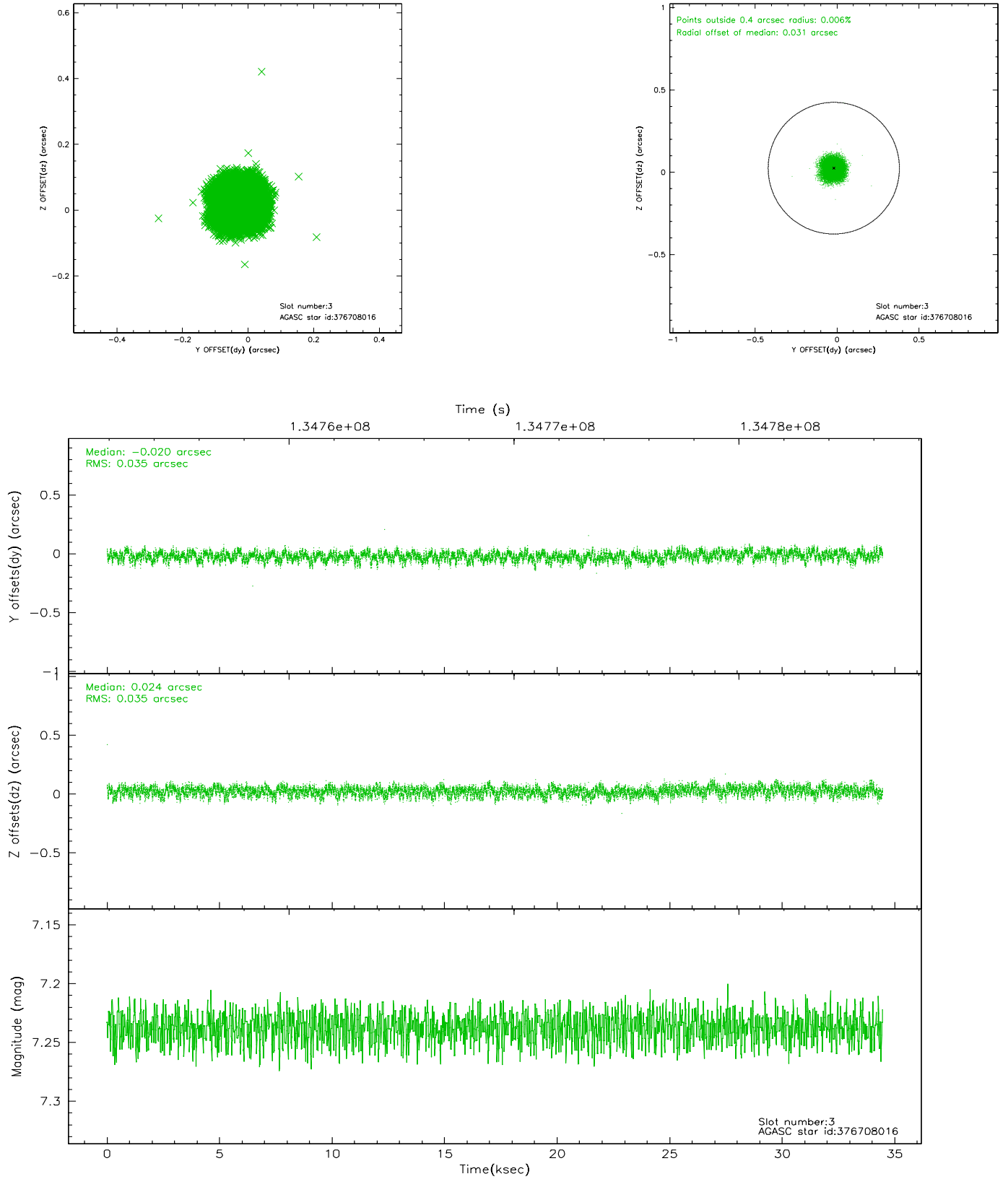


Slot Statistics

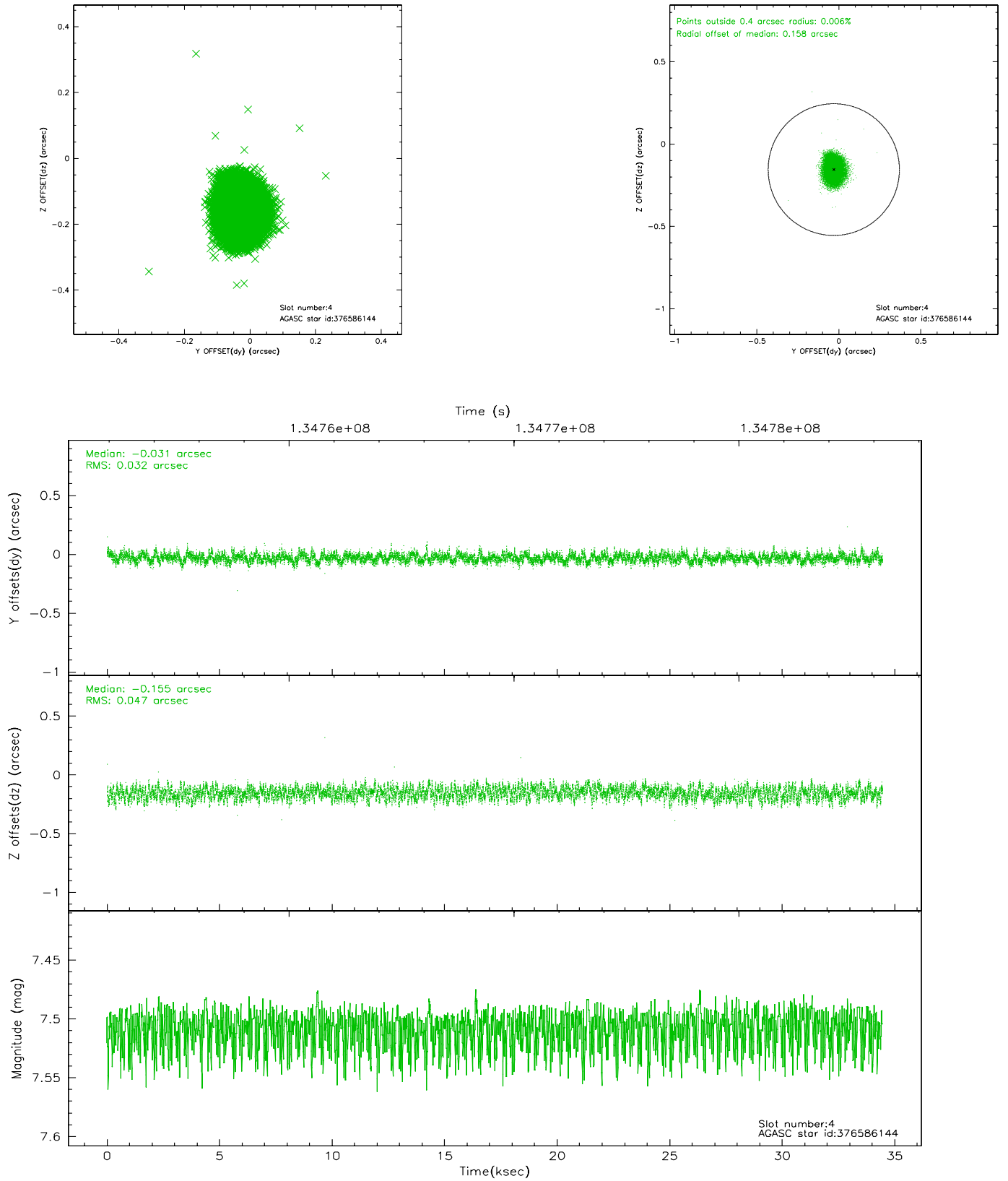
slot	status	id	mag	n_pts	med_dy	med_dz	dr1	dr2	ra	dec	mean_y	mean_z
0	FID	ACIS-S-2	7.10	8405	-0.040	-0.001	0.012	0.023	0.000000	0.000000	-755.47	-1791.62
1	FID	ACIS-S-4	7.20	8404	-0.030	0.020	0.011	0.023	0.000000	0.000000	2157.76	116.89
2	FID	ACIS-S-5	7.23	8404	0.041	-0.010	0.011	0.023	0.000000	0.000000	-1808.21	110.50
3	GUIDE	376708016	7.24	16806	-0.020	0.024	0.053	0.085	53.836874	43.847951	1957.24	2007.95
4	GUIDE	376586144	7.51	16808	-0.031	-0.155	0.061	0.096	52.137991	43.753592	-595.93	-1608.99
5	GUIDE	376718080	8.45	16806	-0.025	0.070	0.064	0.101	52.906904	44.533699	-1473.98	1717.01
6	GUIDE	376570704	9.15	16805	0.127	-0.100	0.104	0.164	52.383963	43.230715	1257.55	-2330.75
7	GUIDE	376701952	9.17	16807	-0.054	0.162	0.096	0.162	52.832333	44.654698	-1931.17	1848.25

2.4 Star Slots

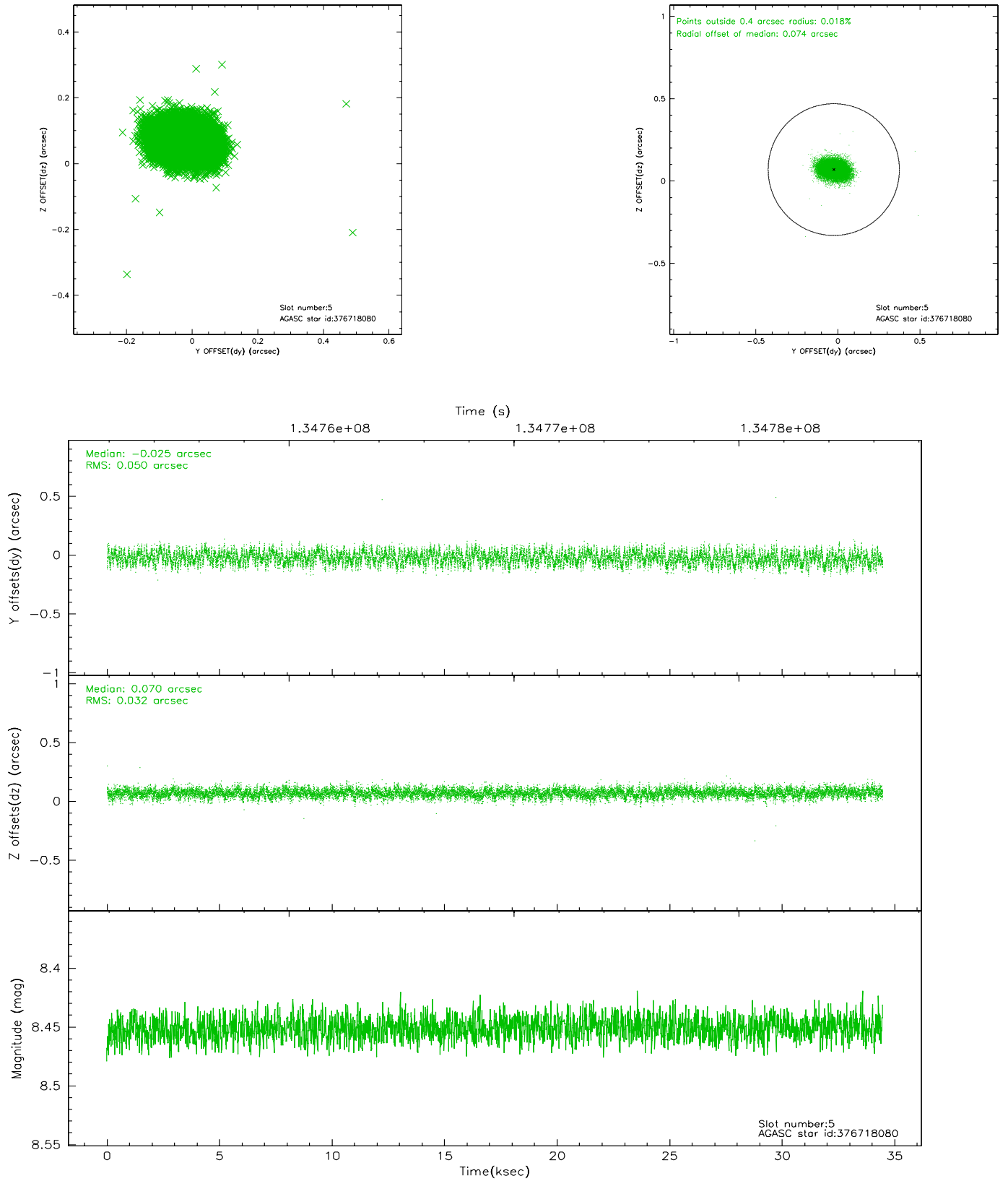
2.4.1 Slot 3



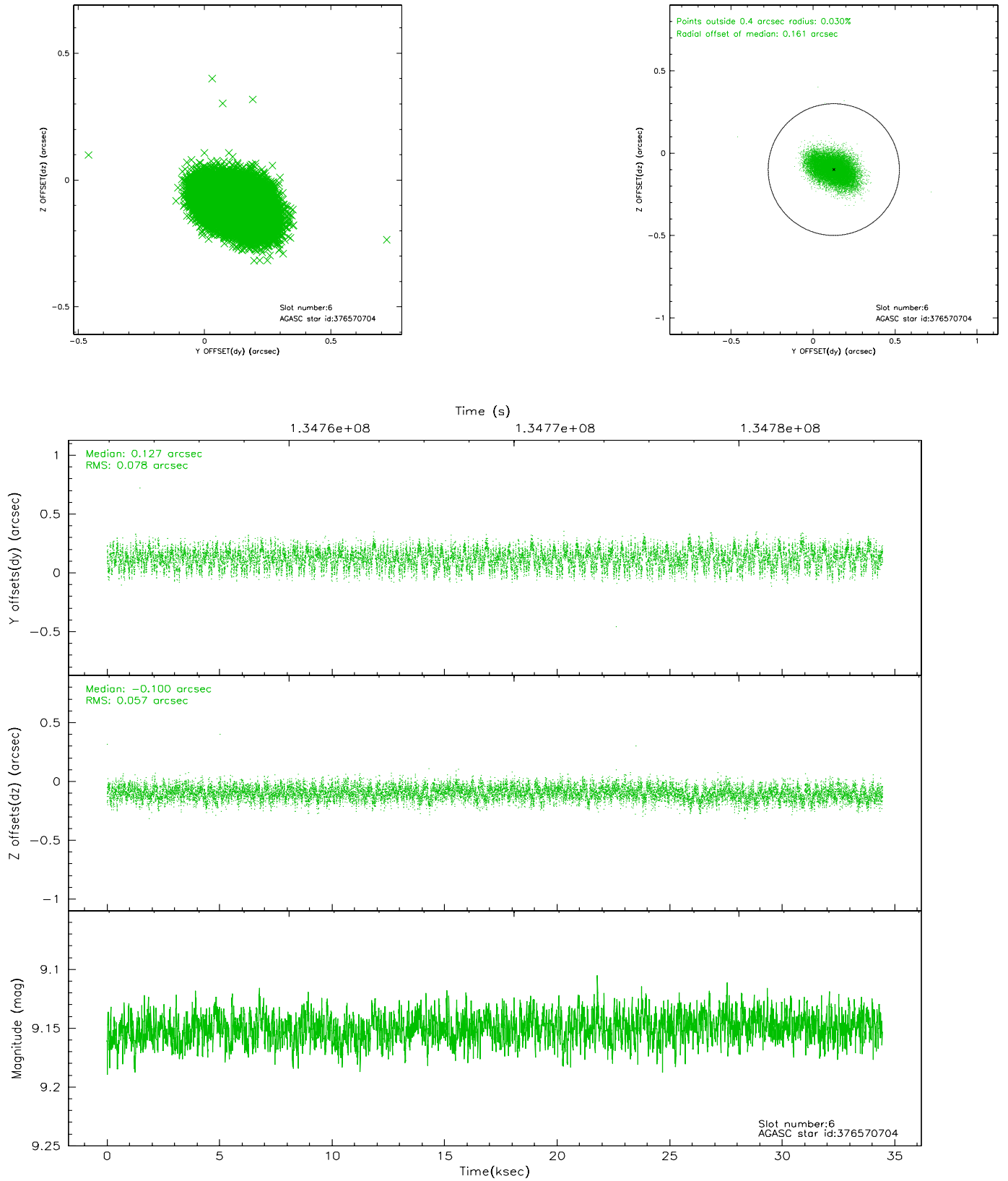
2.4.2 Slot 4



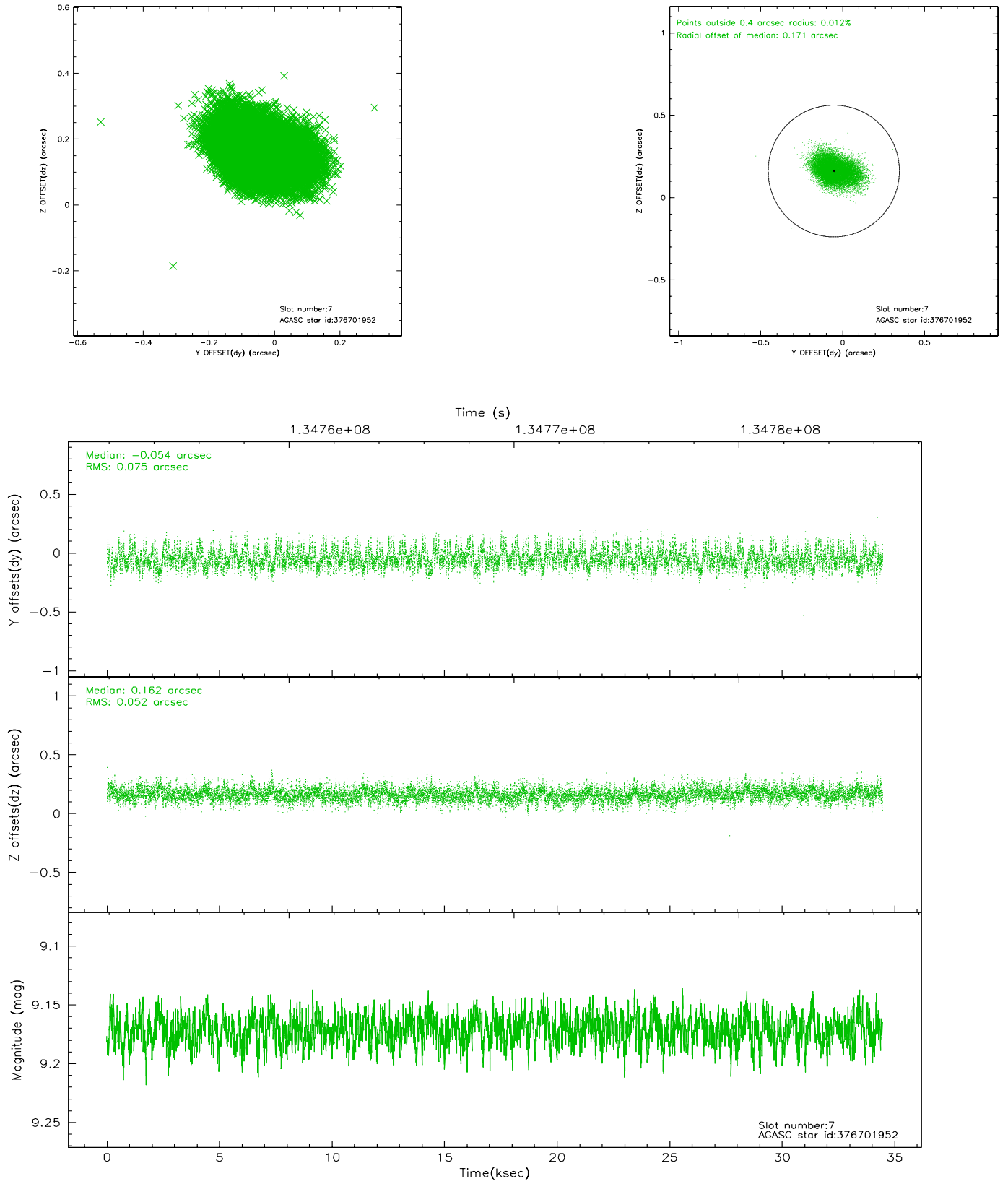
2.4.3 Slot 5



2.4.4 Slot 6

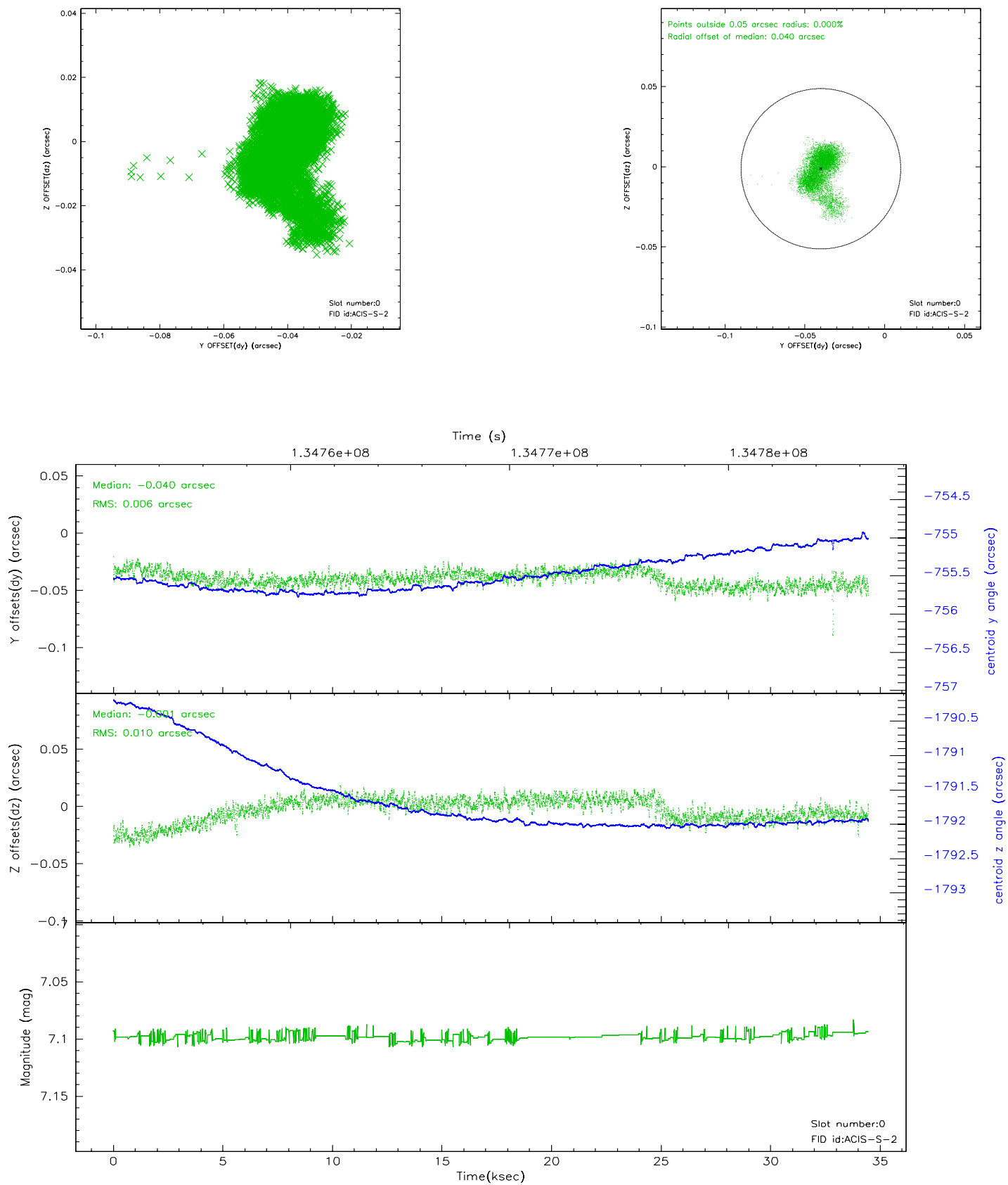


2.4.5 Slot 7

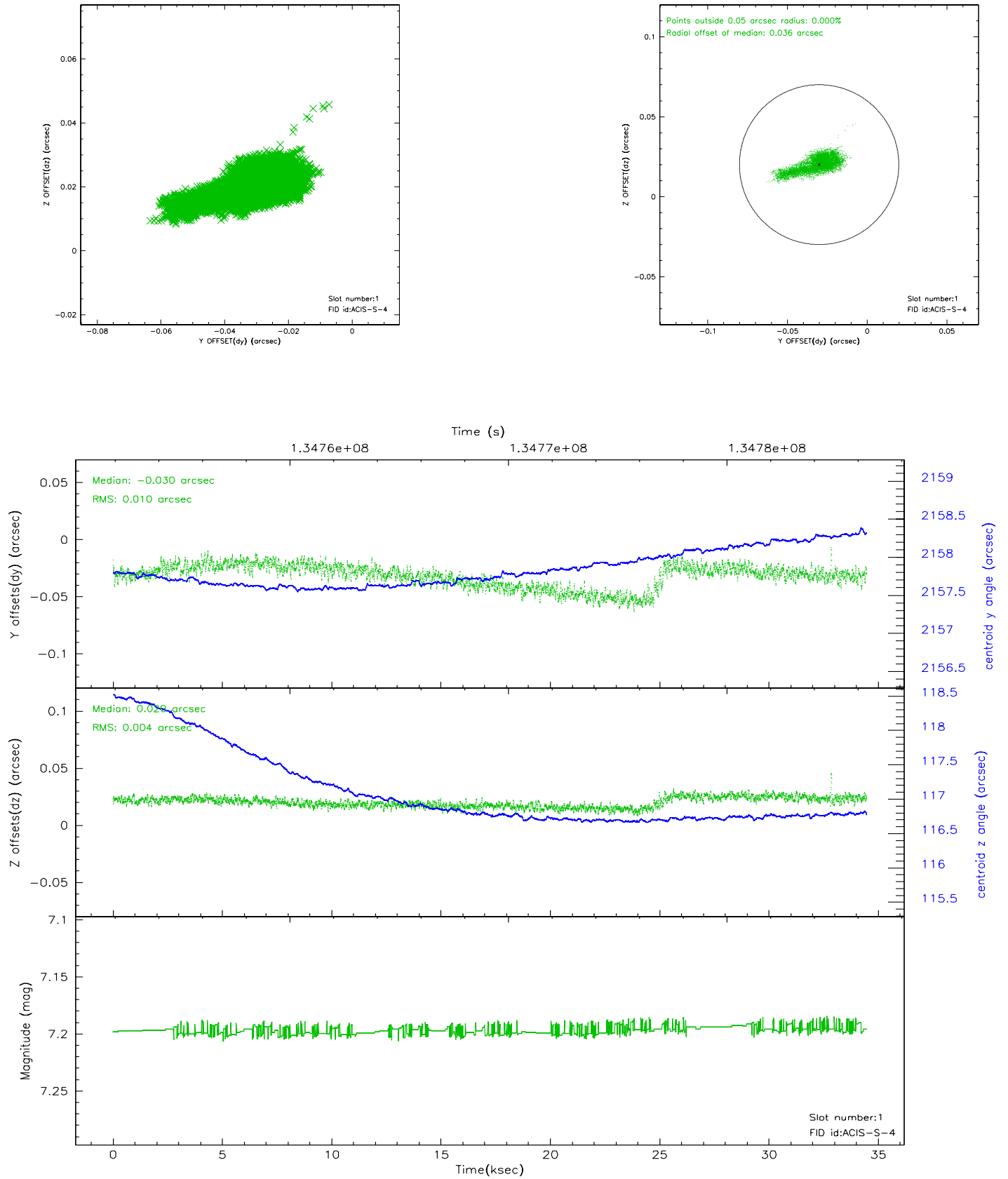


2.5 FID Slots

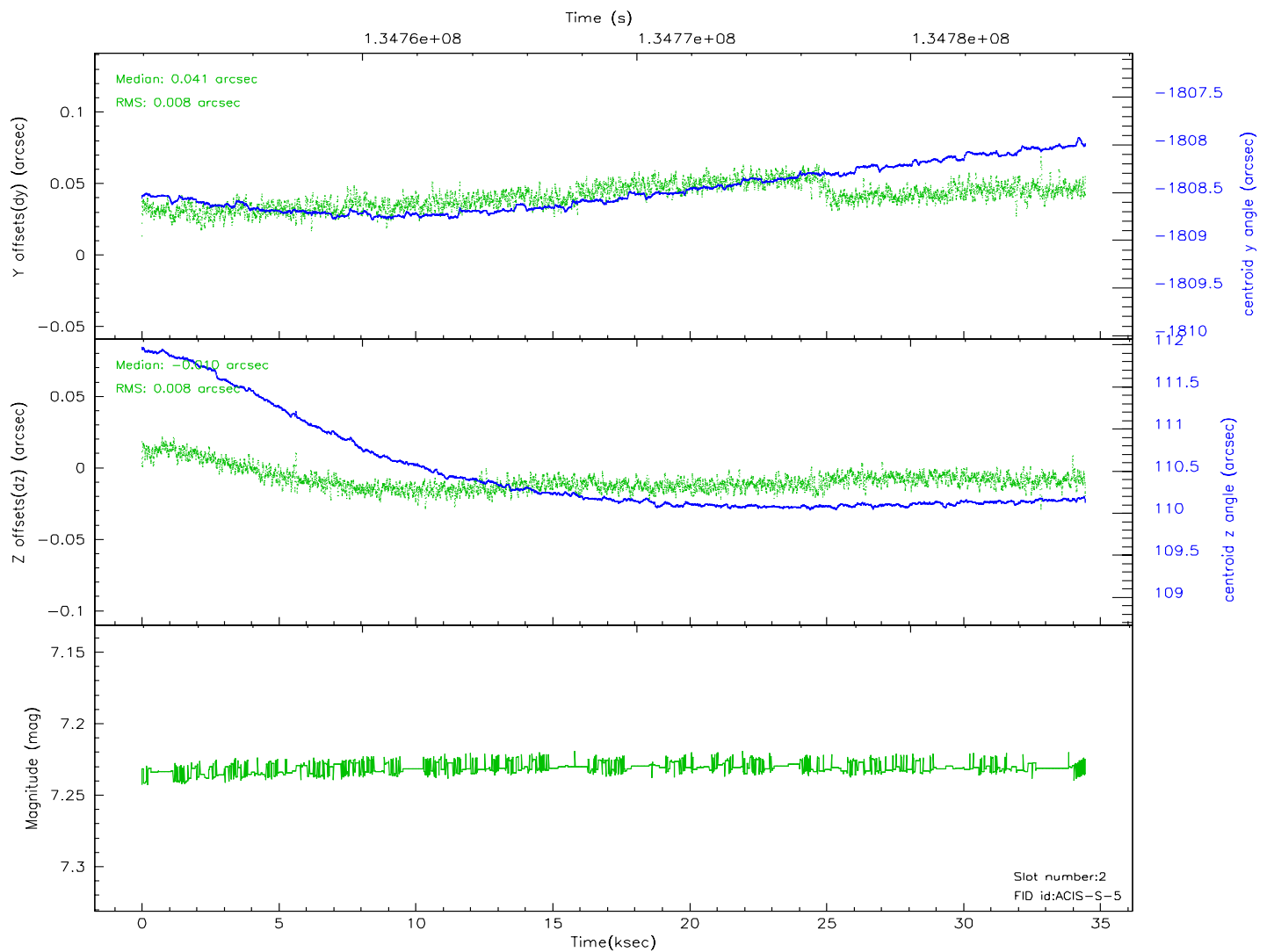
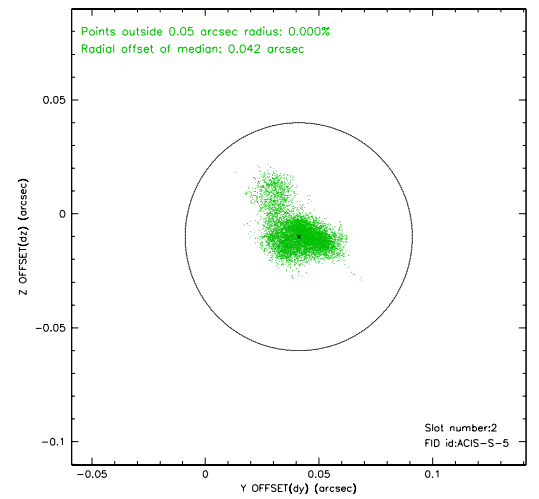
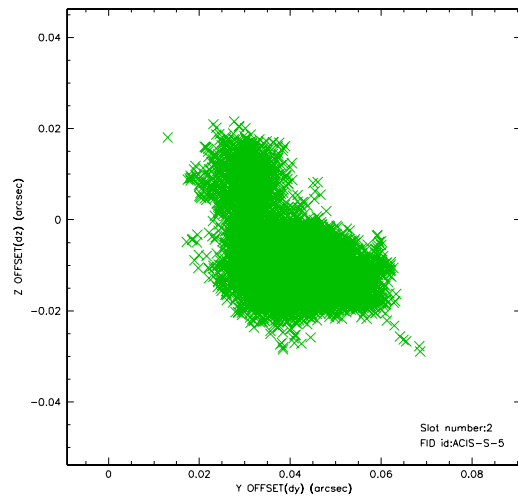
2.5.1 Slot 0



2.5.2 Slot 1



2.5.3 Slot 2

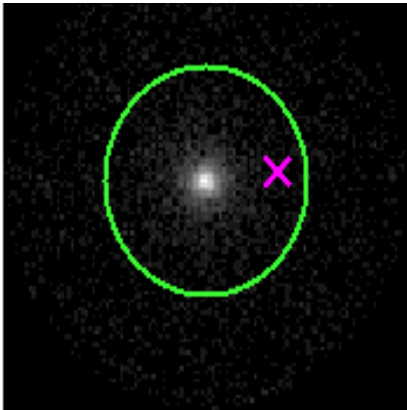


3 Gratings

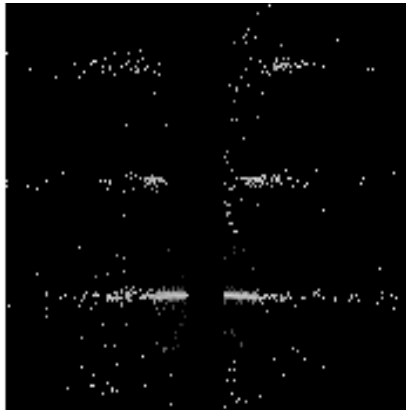
3.1 HEG Arm



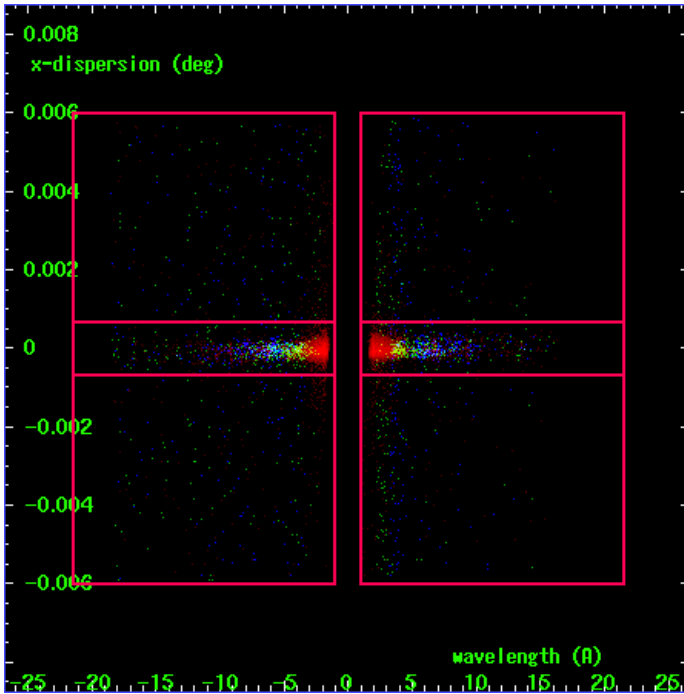
HEG Order Sort 123



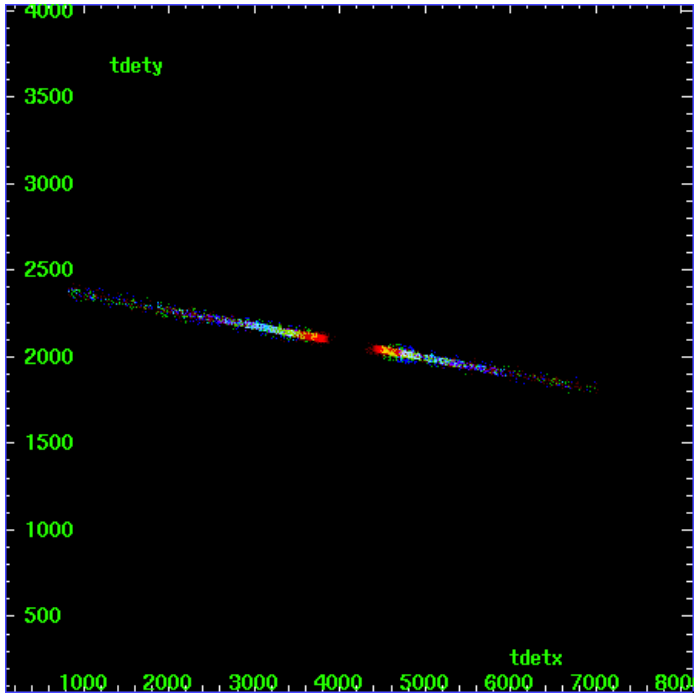
HEG Zero Order



HEG Order Sort ALL

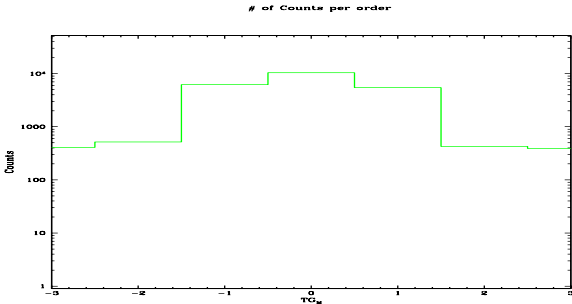


Spot Image HEG

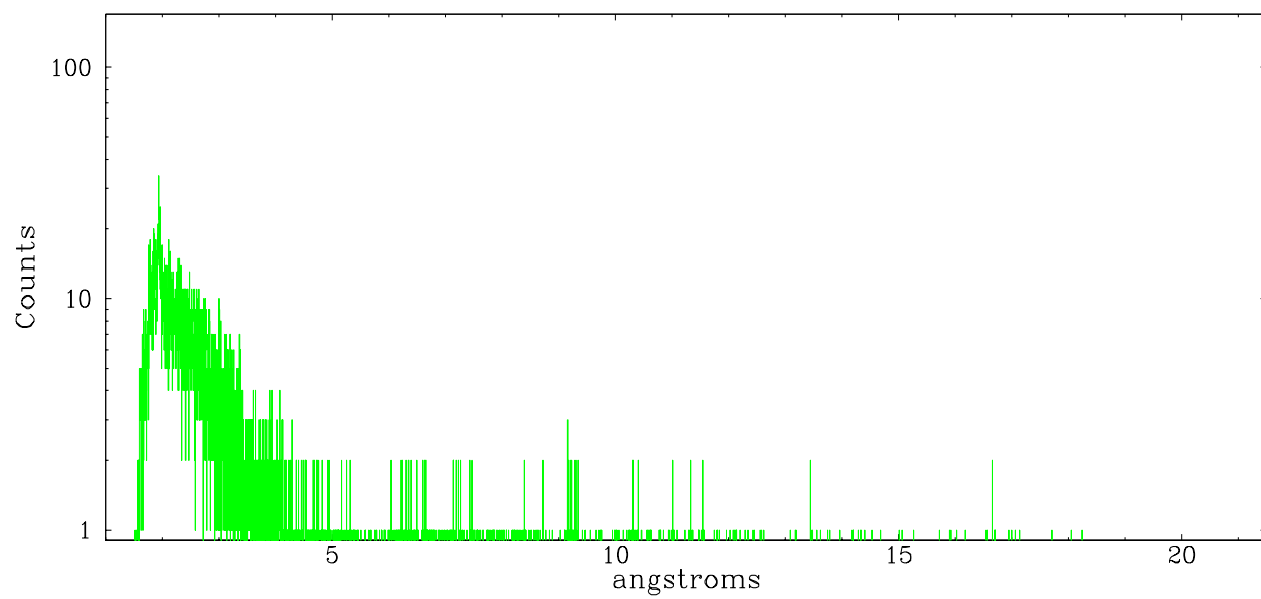


Full Detector HEG

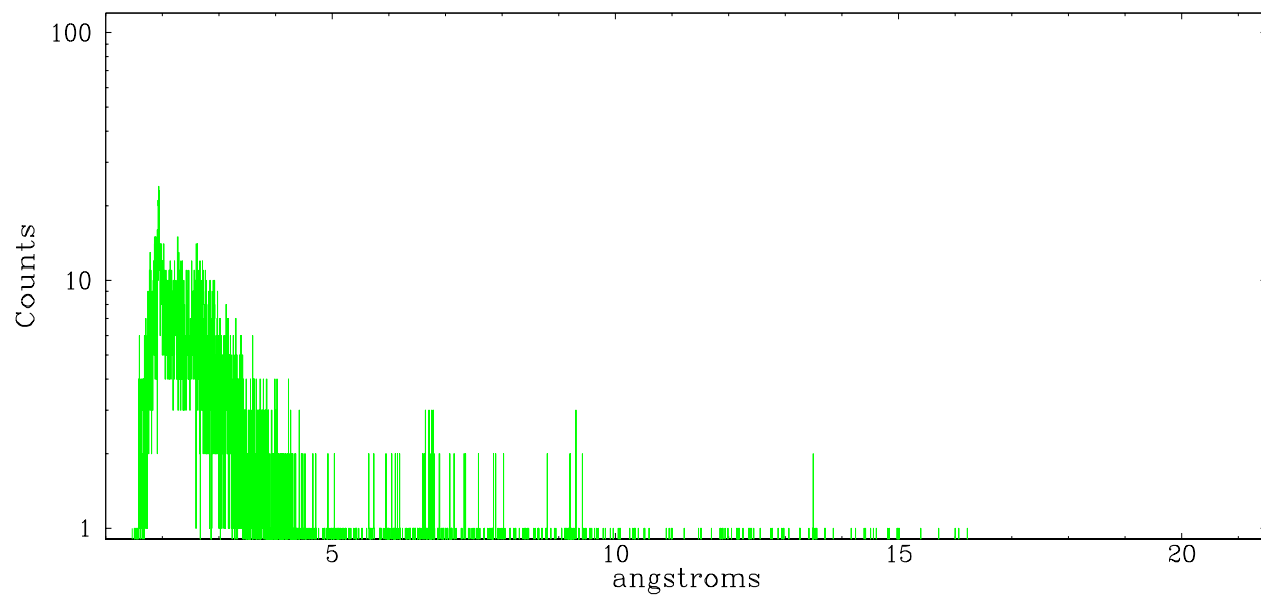
	order -3	order -2	order -1	order 0	order 1	order 2	order 3
Events	409	519	6190	10349	5422	426	390



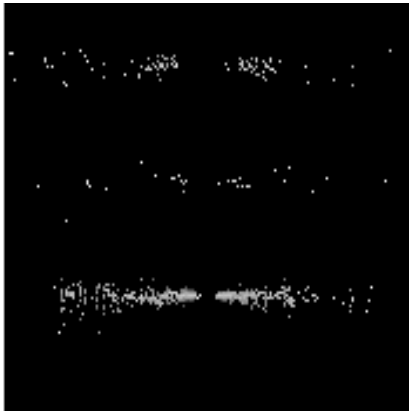
heg order -1



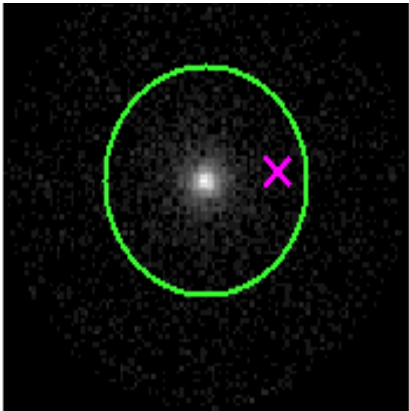
heg order +1



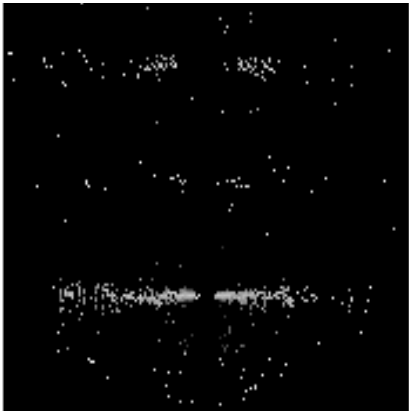
3.2 MEG Arm



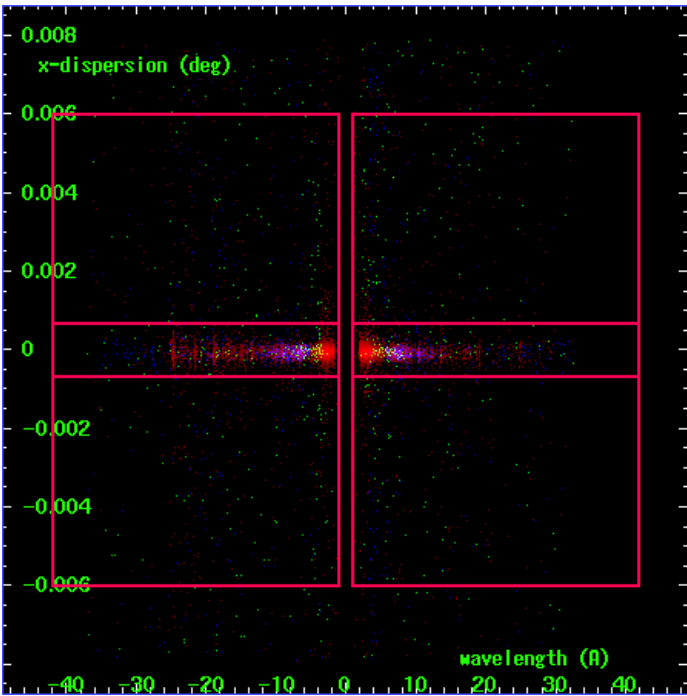
MEG Order Sort 123



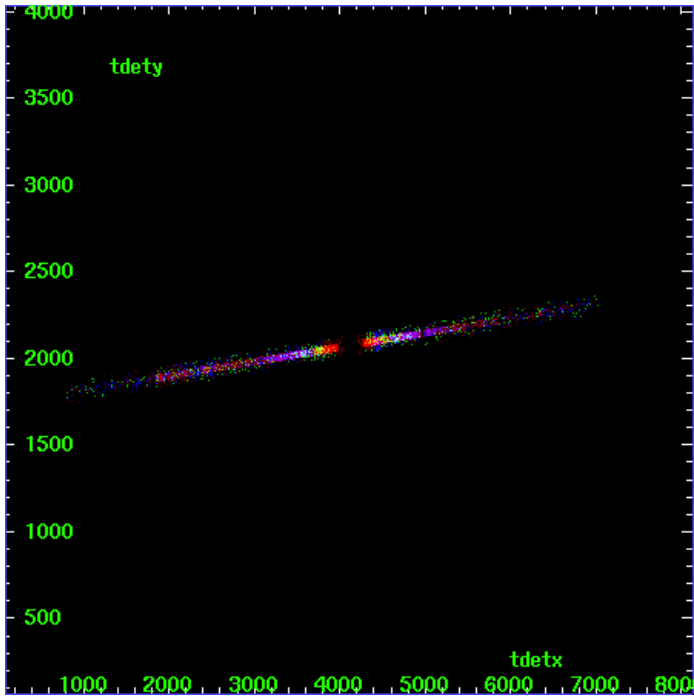
MEG Zero Order



MEG Order Sort ALL

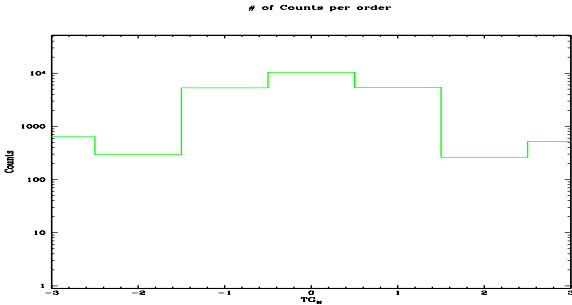


Spot Image MEG

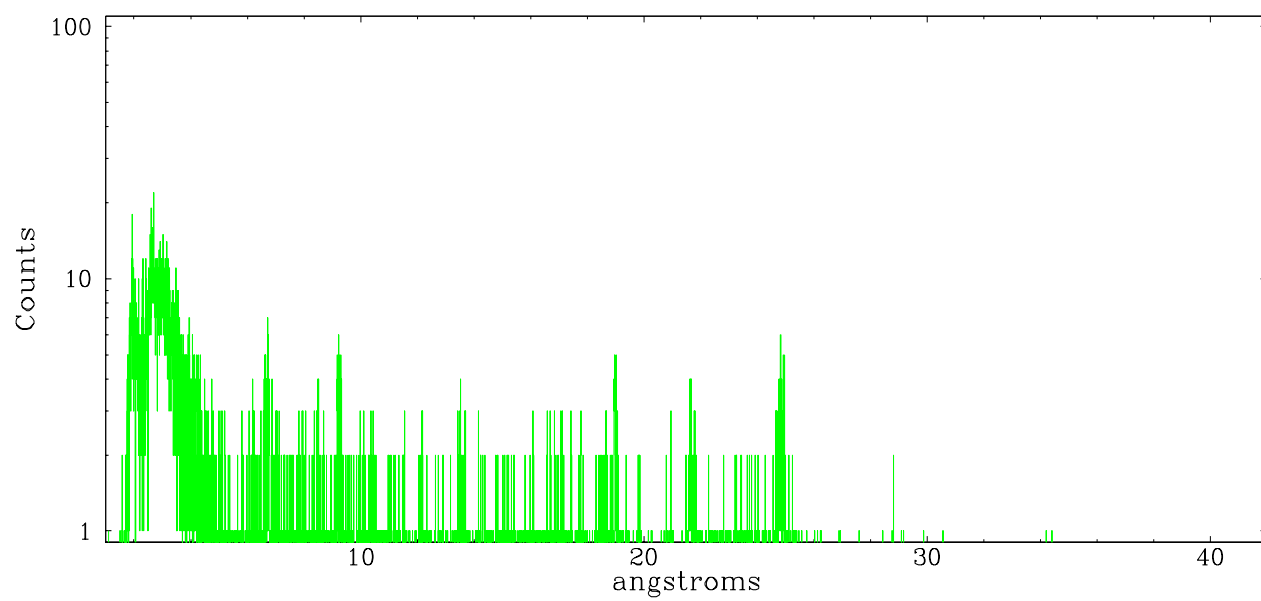


Full Detector MEG

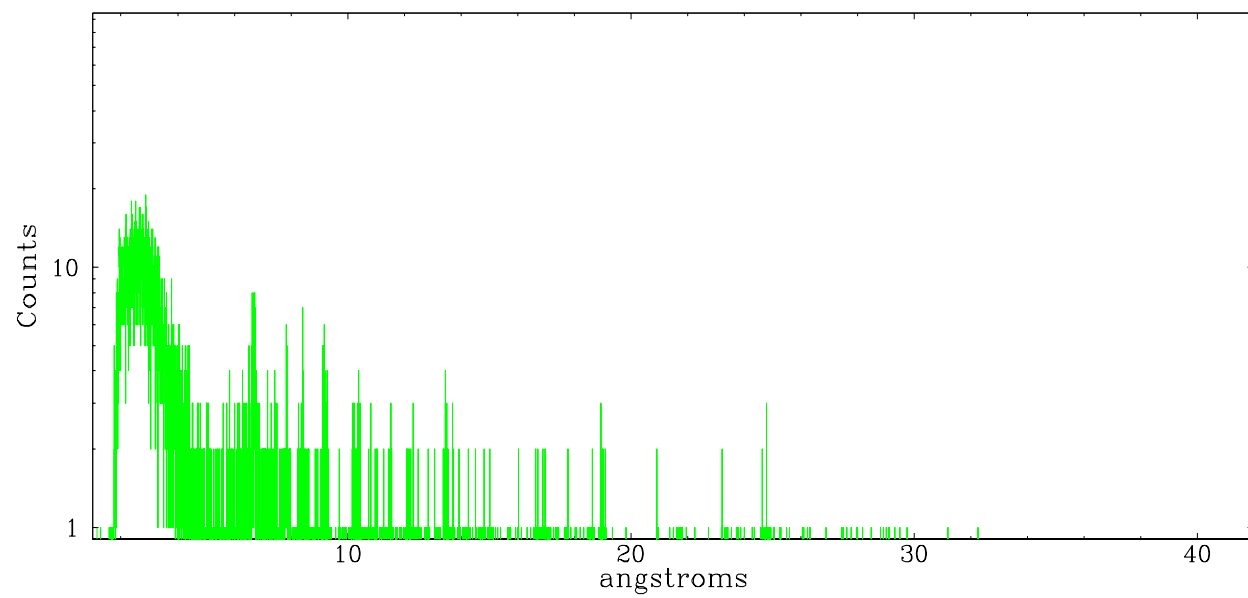
	order -3	order -2	order -1	order 0	order 1	order 2	order 3
Events	637	296	5316	10349	5417	263	519



meg order -1



meg order +1



A Summary

A.1 Status

V&V Scientist	Jen Lauer
V&V Date (YYYY-MM-DD)	2006.09.10
V&V Edition	1
V&V Disposition and Status	OK
V&V Charge Time	34.457

A.2 Comments

Monitor constraint met.