

# V&V Reference Report

## L2 ASCDS Version : 8.4.5

Observation 2685 - L2 Version 3  
Chandra X-Ray Center

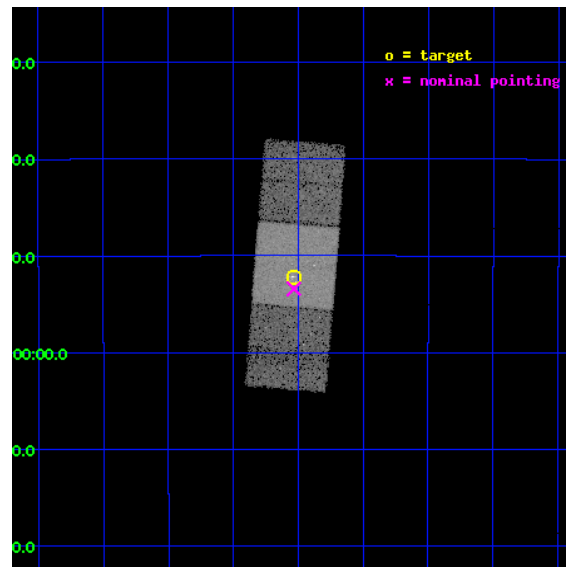
L2 Processing Date : Oct 11 2012

## Contents

<b>1</b>	<b>Front</b>	<b>2</b>
<b>2</b>	<b>OBI</b>	<b>3</b>
2.1	OBI . . . . .	3
2.1.1	Images . . . . .	3
2.1.2	Bias . . . . .	3
2.1.3	Parameters . . . . .	4
2.1.4	Events . . . . .	4
2.2	Compared Parameters . . . . .	5
2.3	Aspect . . . . .	6
2.4	Star Slots . . . . .	9
2.4.1	Slot 3 . . . . .	9
2.4.2	Slot 4 . . . . .	10
2.4.3	Slot 5 . . . . .	11
2.4.4	Slot 6 . . . . .	12
2.4.5	Slot 7 . . . . .	13
2.5	FID Slots . . . . .	14
2.5.1	Slot 0 . . . . .	14
2.5.2	Slot 1 . . . . .	15
2.5.3	Slot 2 . . . . .	16
<b>A</b>	<b>Summary</b>	<b>17</b>
A.1	Status . . . . .	17
A.2	Comments . . . . .	17

# 1 Front

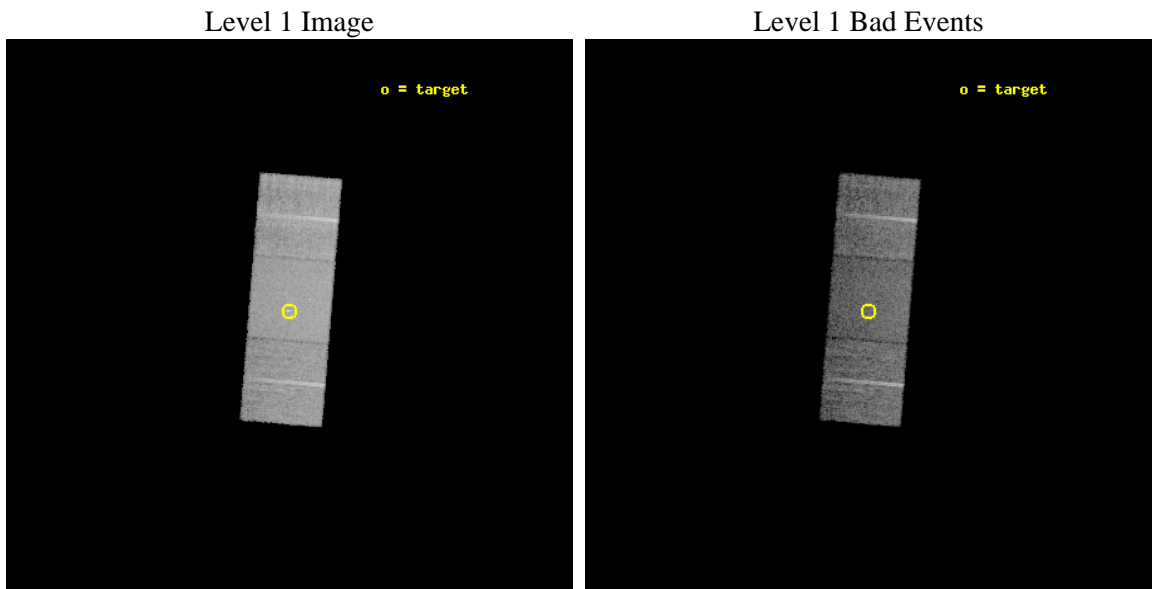
seq_num	300086	Sequence number
obs_id	2685	Observation id
title	MULTIWAVELENGTH STUDY OF THE GLOBULAR CLUSTER M28 (NGC~6626)	Propo
observer	Prof. Dr. Werner Becker	Principal investigator
object	M28	Source name
dtcycle	0	&#160
cycle	P	events from which exps? Prim/Second/Both
ra_targ	276.133333	Observer's specified target RA [deg]
dec_targ	-24.869639	Observer's specified target Dec [deg]
ra_nom	276.13329906525	Nominal RA [deg]
dec_nom	-24.890416024661	Nominal Dec [deg]
roll_nom	274.68532726518	Nominal Roll [deg]
revision	3	Processing version of data
ontime	13688.66435495	Sum of GTIs [s]
livetime	13509.811877705	Livetime [s]
ontime6	13691.764285177	Sum of GTIs [s]
ontime7	13688.66435495	Sum of GTIs [s]
ontime8	13691.723245174	Sum of GTIs [s]
l2events	69833	Number of level 2 events



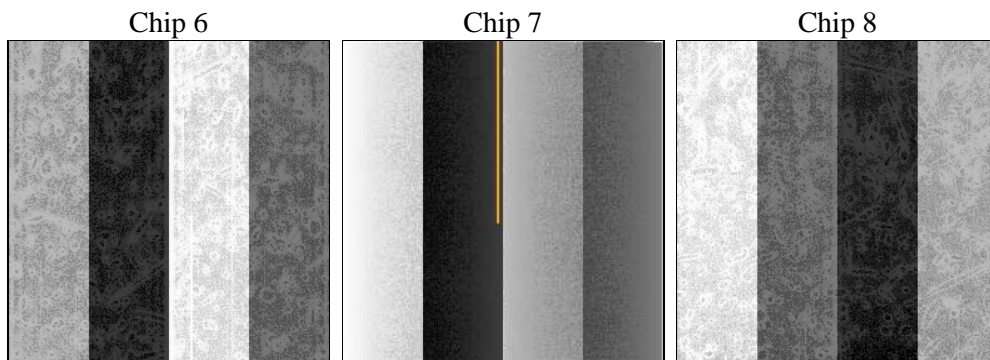
## 2 OBI

### 2.1 OBI

#### 2.1.1 Images



#### 2.1.2 Bias



### 2.1.3 Parameters

obi_num	0	Obi number	sched_exp_time	13333.000000	[s] Scheduled observation exposure time
ascdsver	8.4.5	Processing system revision	ontime	13688.66435495	Sum of GTIs [s]
caldbver	4.5.2	&#160	ontime6	13691.764285177	Sum of GTIs [s]
date	2012-10-11T21:33:23	Date and time of file creation	ontime7	13688.66435495	Sum of GTIs [s]
revision	3	Processing version of data	ontime8	13691.723245174	Sum of GTIs [s]
			l1events	297893	Number of level 1 events

### 2.1.4 Events

	<b>ccd 6</b>	<b>ccd 7</b>	<b>ccd 8</b>
level 1 events	83521	107532	106840
rejected events	70929	59849	79001
rejected %	84%	55%	73%

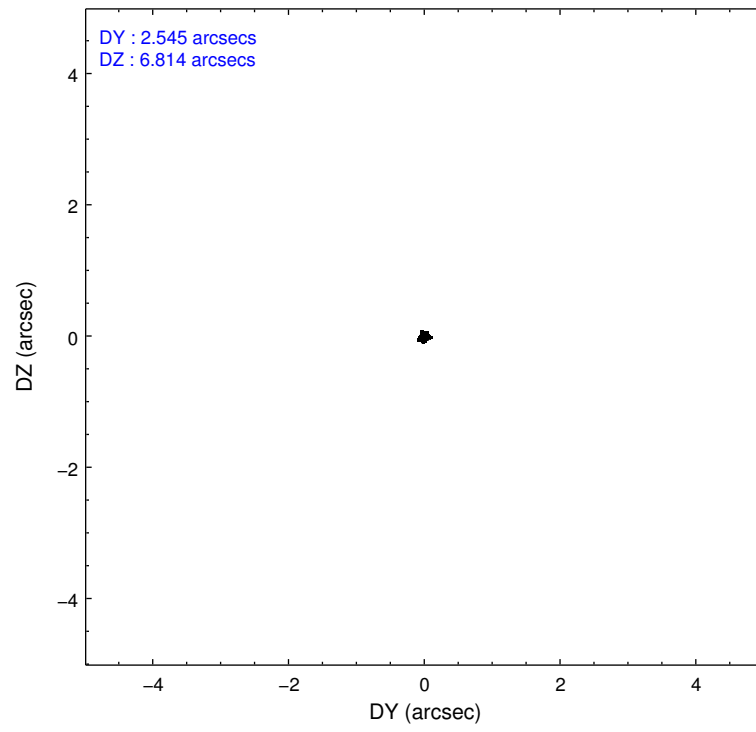
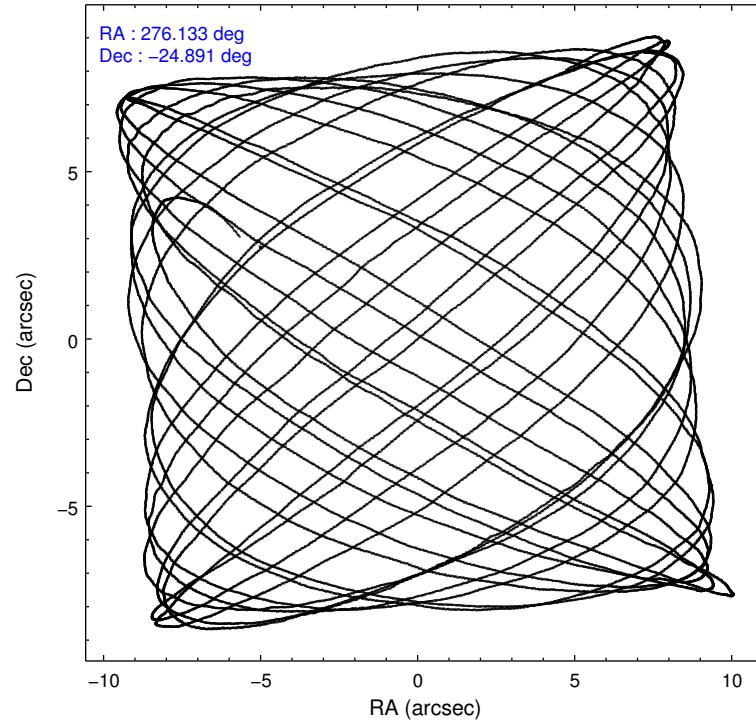
	<b>ccd 6</b>	<b>ccd 7</b>	<b>ccd 8</b>
grade 0 events	5906	5395	10685
	7%	5%	10%
grade 1 events	44	85	73
	0%	0%	0%
grade 2 events	2638	9530	5290
	3%	8%	4%
grade 3 events	973	4383	3147
	1%	4%	2%
grade 4 events	967	4284	2924
	1%	3%	2%
grade 5 events	3513	9742	4500
	4%	9%	4%
grade 6 events	2113	24113	5804
	2%	22%	5%
grade 7 events	67367	50000	74417
	80%	46%	69%

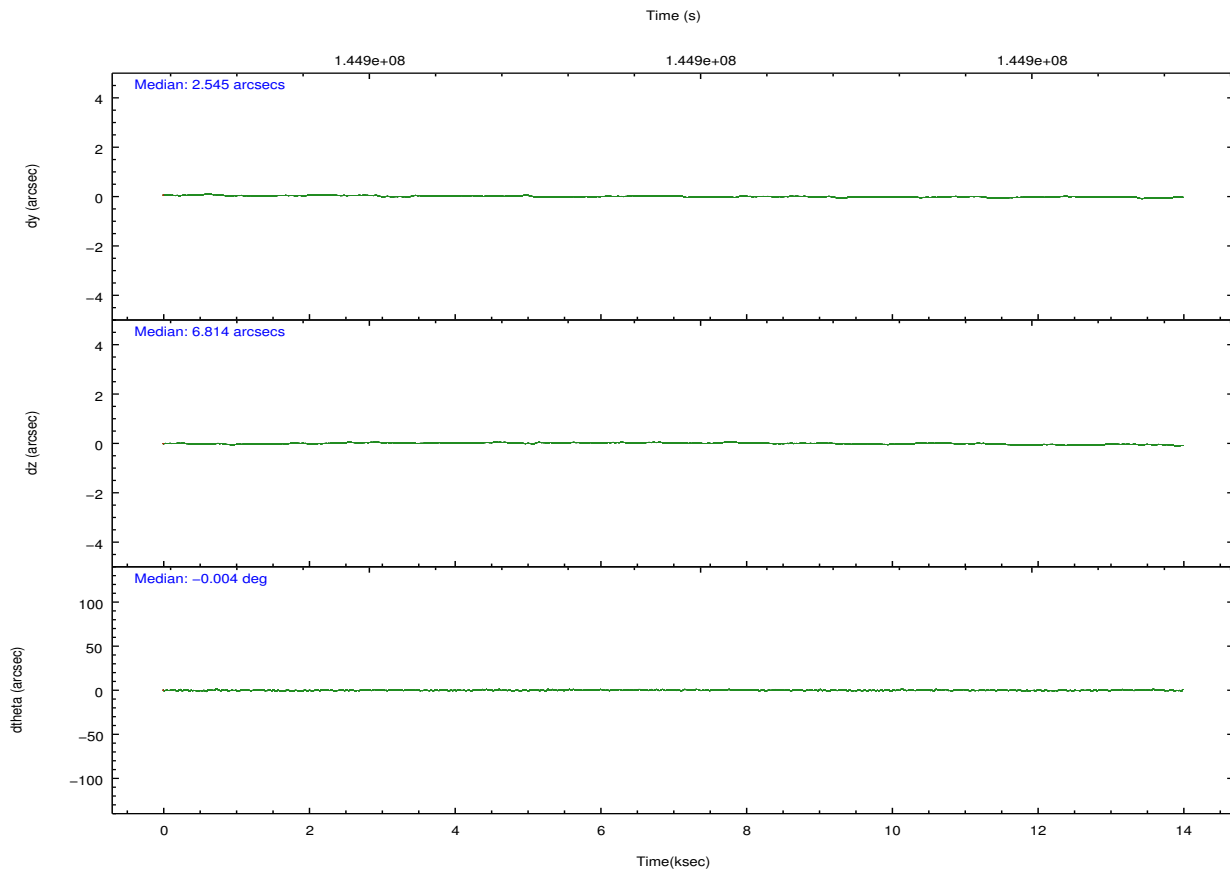
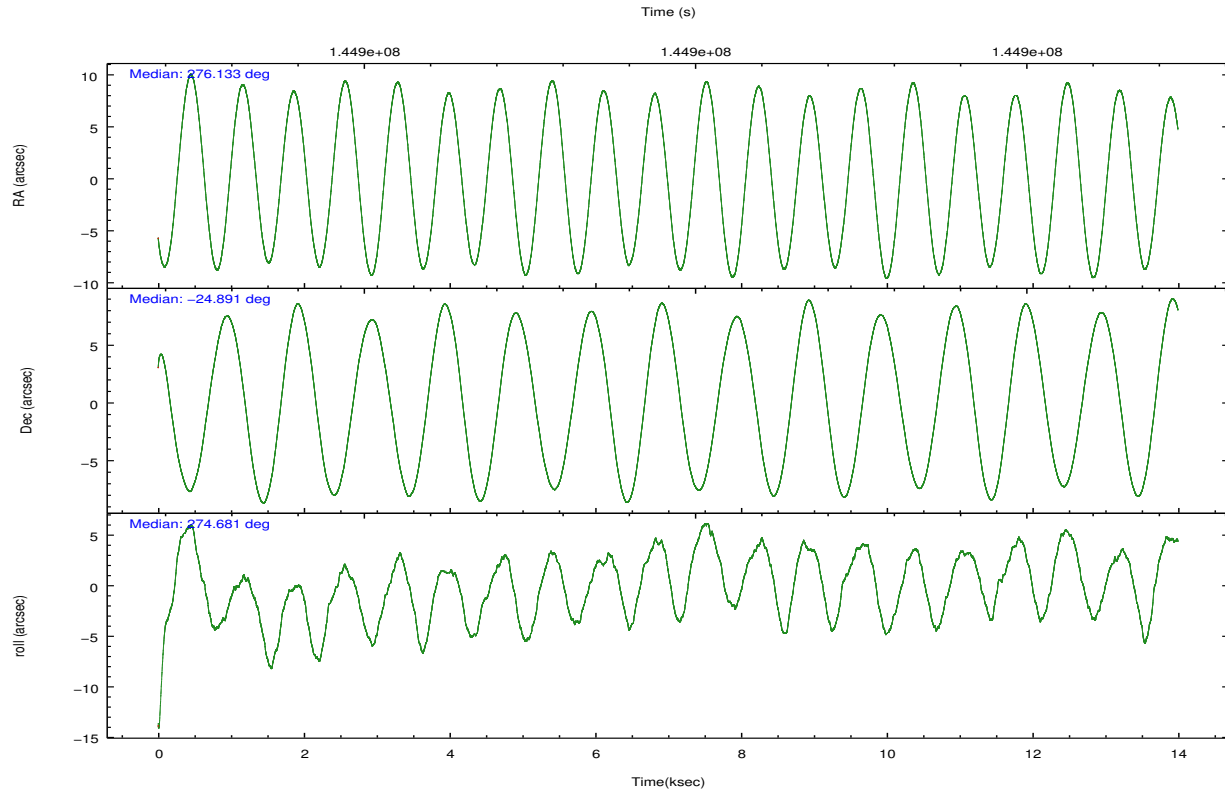


## 2.2 Compared Parameters

Parameter	Planned	Actual	Parameter	Planned	Actual
Instrument	ACIS	ACIS	Obspar format version number	7	7
Detector	ACIS-678	ACIS-678	Obspar file type	PREDICTED	ACTUAL
Grating	NONE	NONE	Obspar update status	NONE	UPDATED
Data mode	VFAINT	VFAINT	Number of optional ACIS chips dropped	0	0
Observation mode	POINTING	POINTING	On-chip summing requested	N	N
[deg] Pointing RA	276.115889	276.1332990652506	Subarray requested	NONE	NONE
[deg] Pointing Dec	-24.868216	-24.8904160246606	Alternating exposures requested	N	N
[deg] Pointing Roll	274.521387	274.6853272651763	[s] Primary exposure time	0.000000	3.1
[mm] SIM focus pos	-0.684267	-0.6828225247311905			
[mm] SIM defocus	0	0.001444936568705701			
[mm] SIM translation stage pos	-190.132523	-190.1400660498719			
[mm] SIM translation stage offset	0	0.00754346686406393			
[s] Observation start time (MET)	144893246.184000	144892049.05817			
Observation start date	2002-08-05T00:06:22	2002-08-04T23:47:29			
[s] Observation end time (MET)	144906579.184000	144906880.29628			
Observation end date	2002-08-05T03:48:35	2002-08-05T03:54:40			
Read mode	TIMED	TIMED			

## 2.3 Aspect



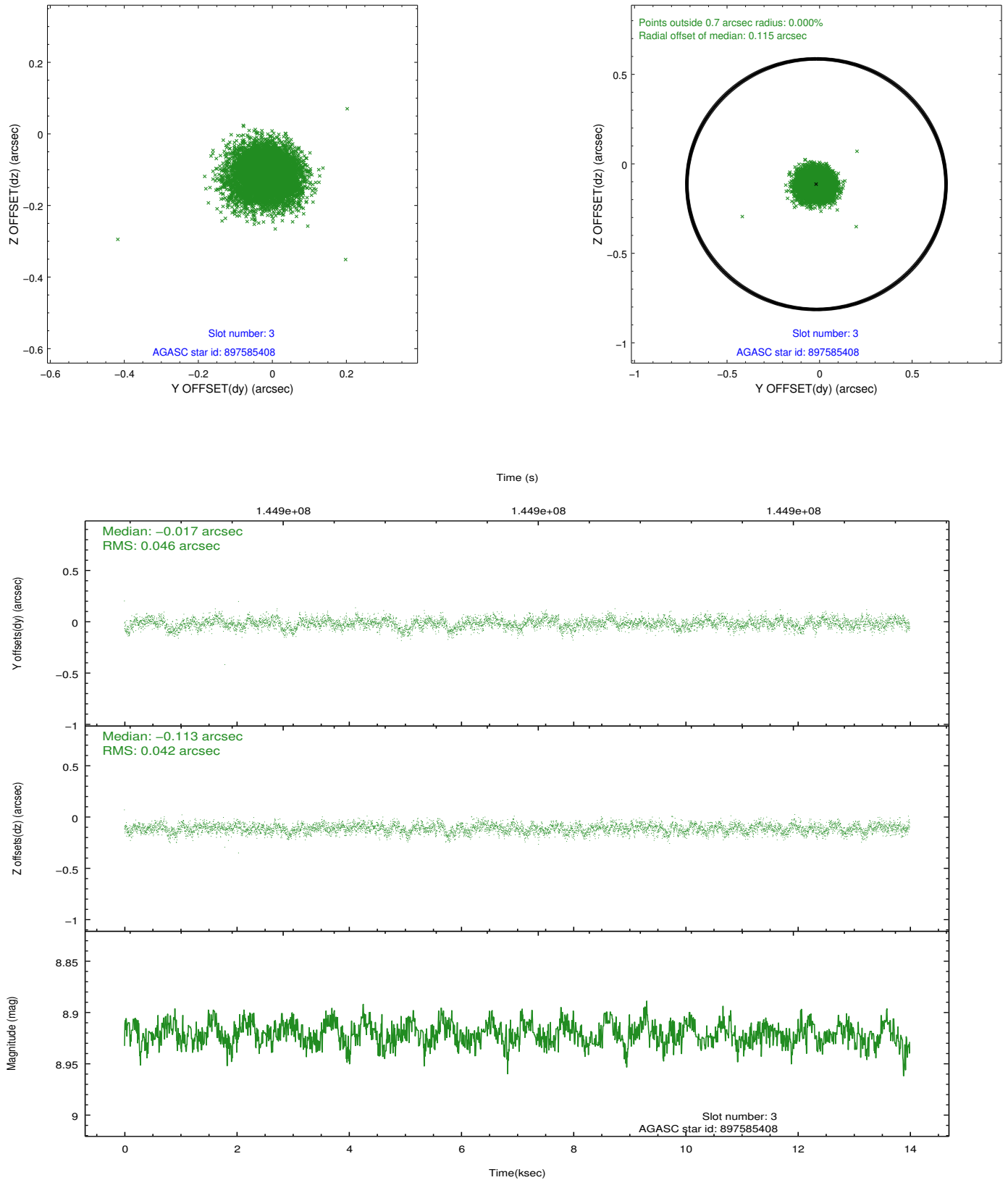


### Slot Statistics

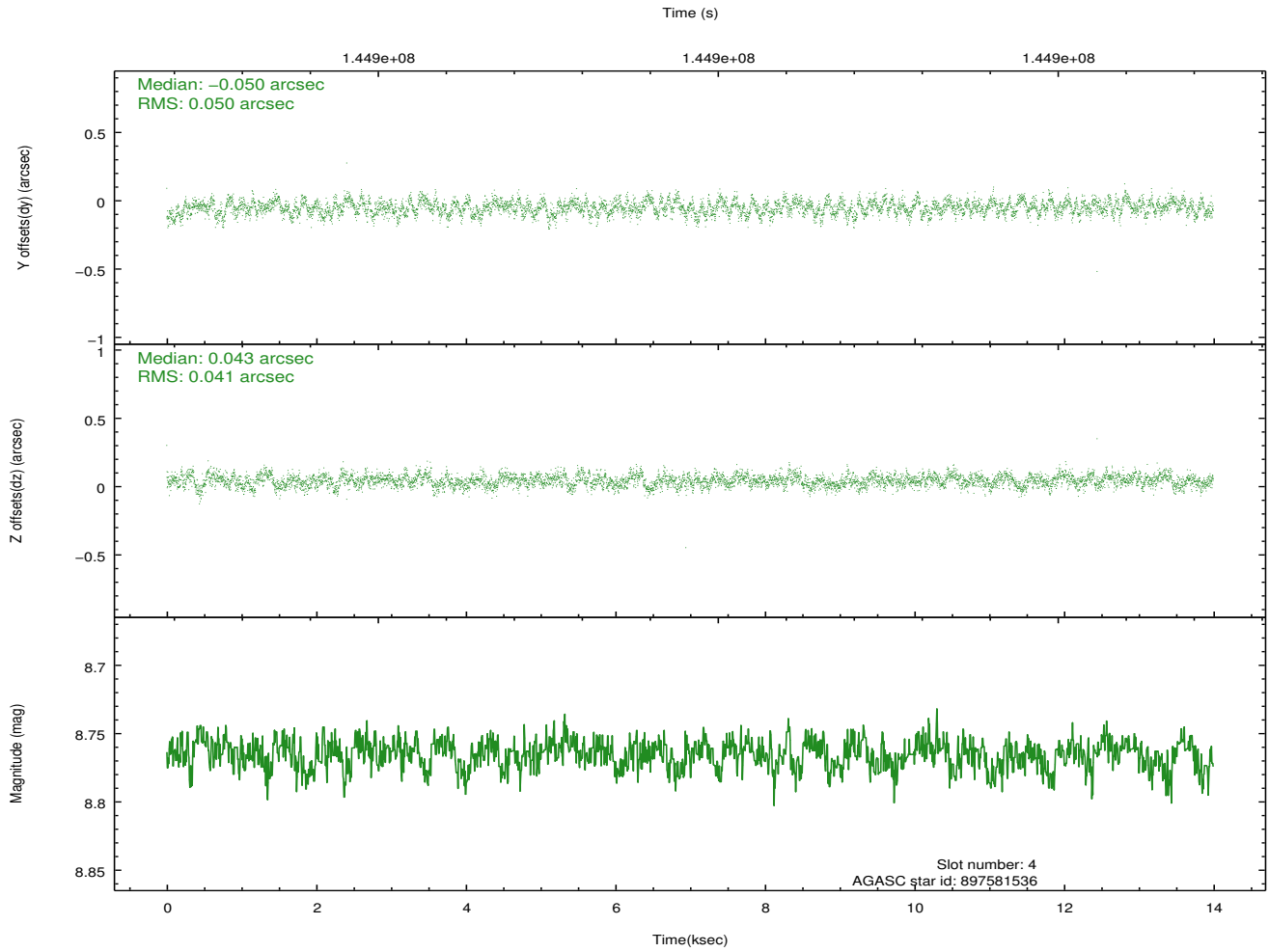
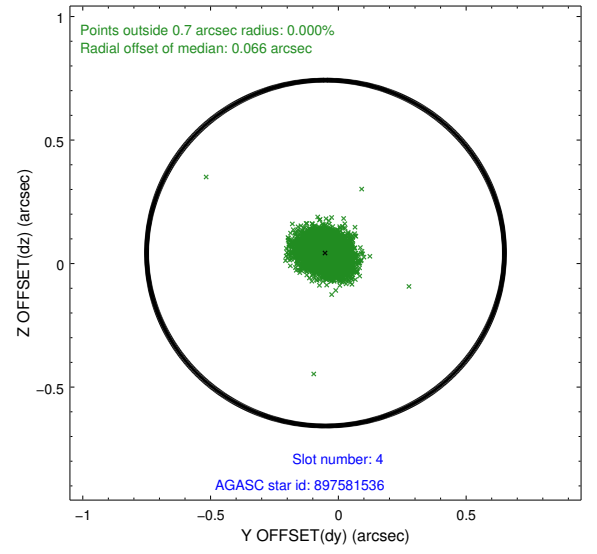
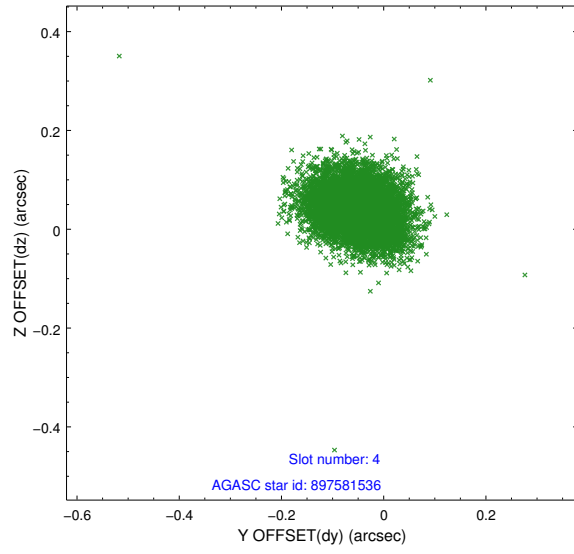
slot	status	id	mag	n_pts	med_dy	med_dz	dr1	dr2	ra	dec	mean_y	mean_z
0	FID	ACIS-S-2	7.12	3413	-0.010	-0.004	0.006	0.011	0.000000	0.000000	-755.18	-1727.98
1	FID	ACIS-S-4	7.20	3413	-0.006	0.002	0.006	0.010	0.000000	0.000000	2157.94	180.19
2	FID	ACIS-S-6	7.36	3413	-0.012	0.010	0.007	0.012	0.000000	0.000000	407.22	817.96
3	GUIDE	897585408	8.92	6827	-0.017	-0.113	0.066	0.108	276.128475	-24.385394	-1730.61	178.11
4	GUIDE	897581536	8.76	6827	-0.050	0.043	0.068	0.110	276.270189	-24.414428	-1589.91	633.11
5	GUIDE	897607632	9.03	6824	0.035	-0.045	0.078	0.127	275.528210	-25.239953	1186.24	-2013.31
6	GUIDE	897076488	9.45	6823	0.008	0.093	0.091	0.155	275.884089	-24.287832	-2143.09	-593.88
7	GUIDE	897604816	9.63	6817	0.028	0.022	0.100	0.170	276.024863	-24.968377	334.71	-324.46

## 2.4 Star Slots

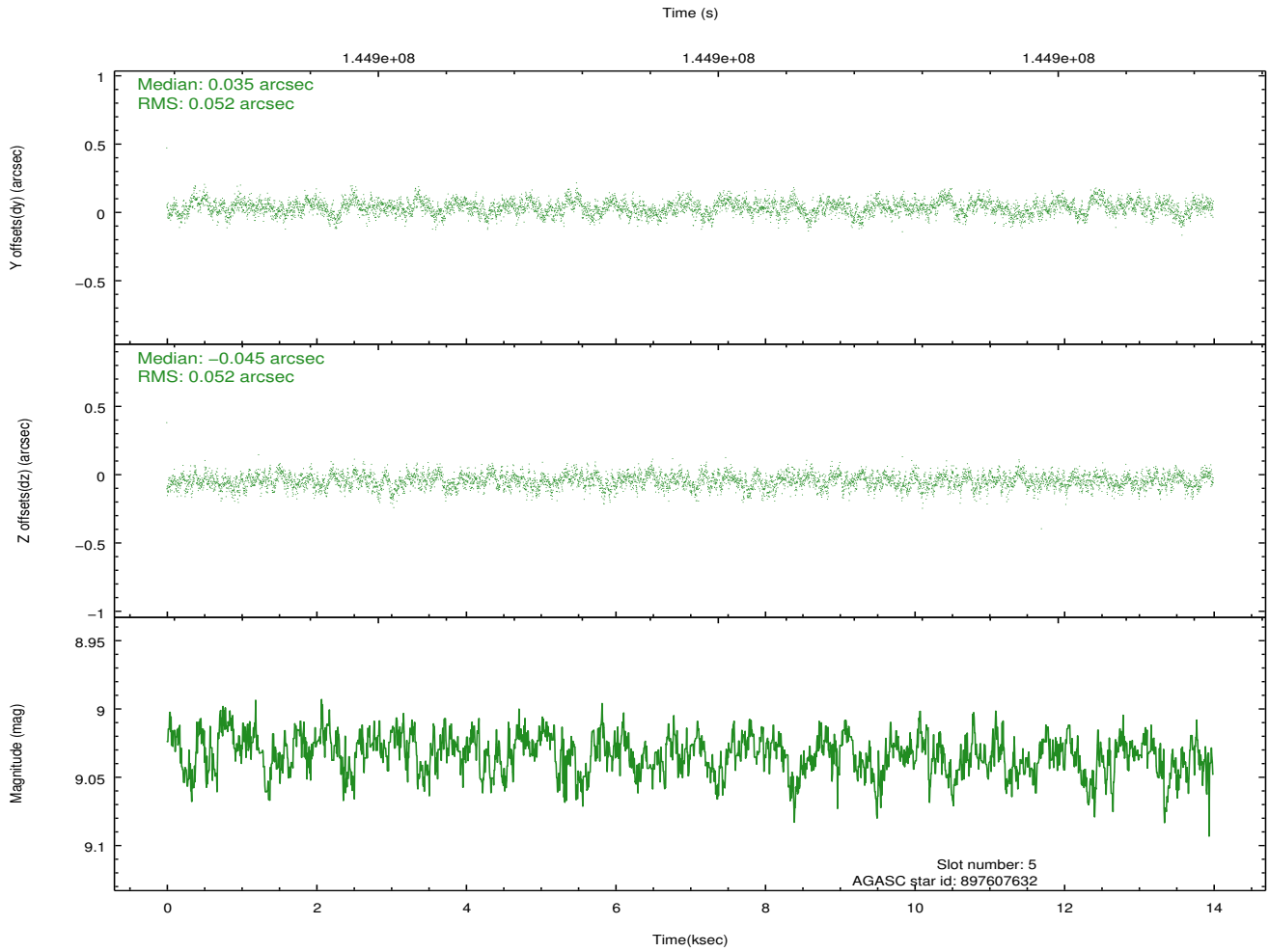
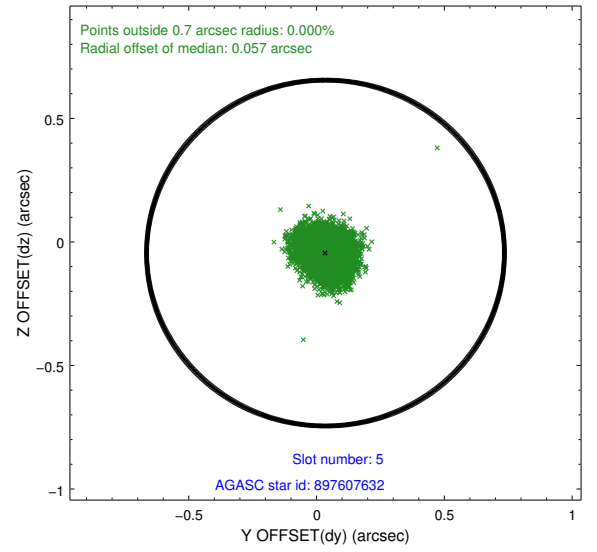
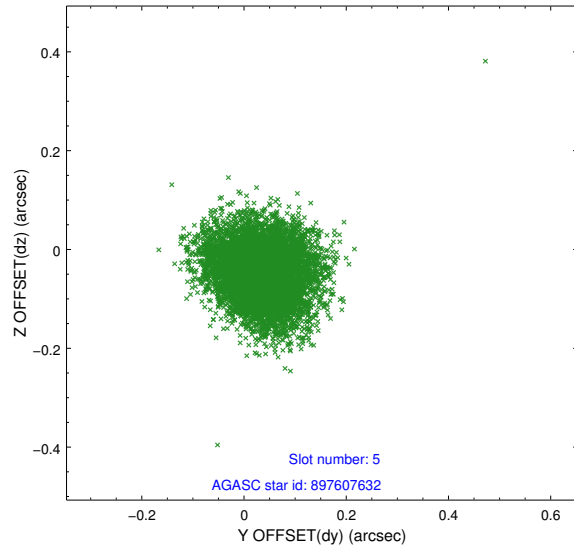
### 2.4.1 Slot 3



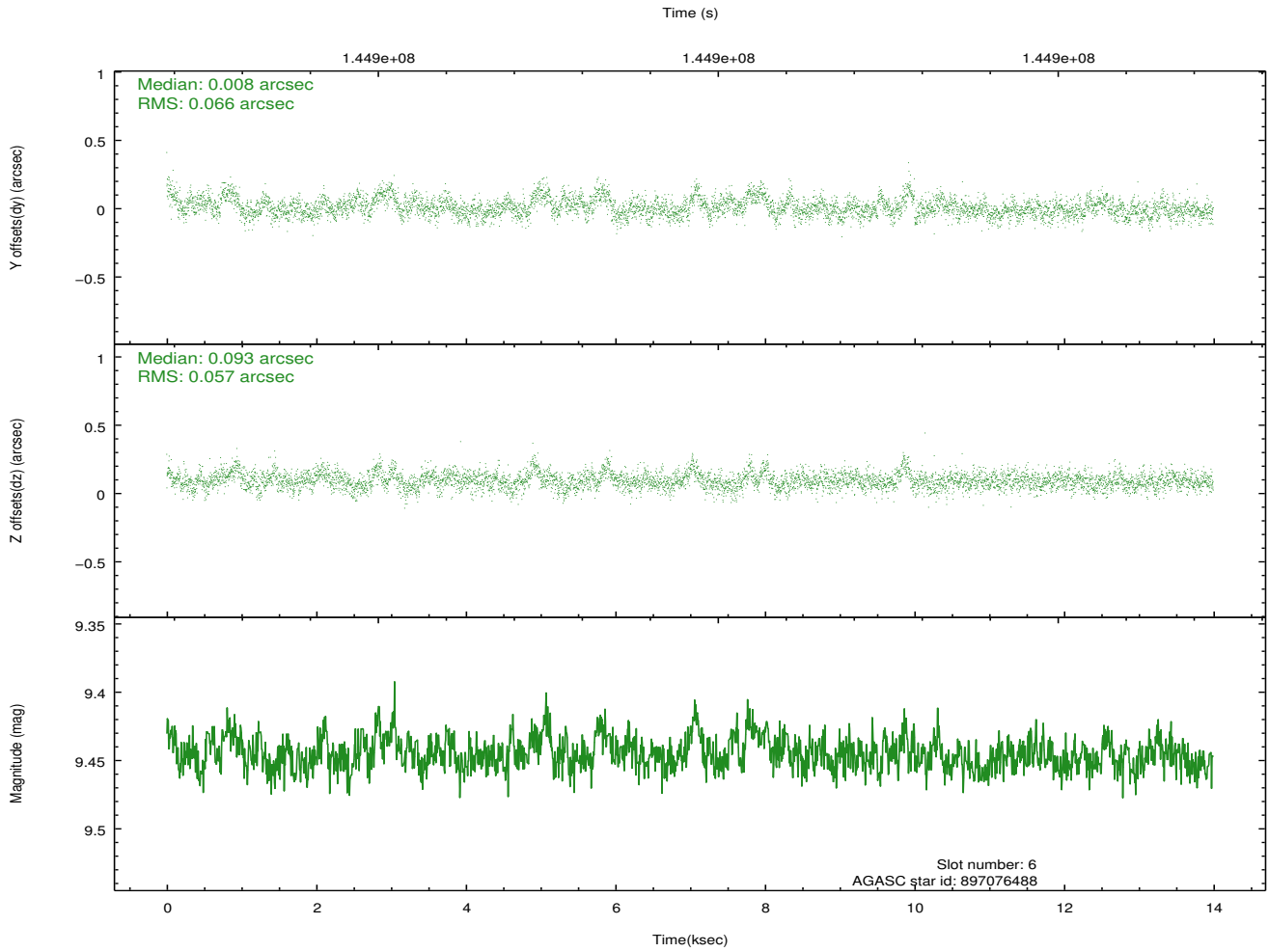
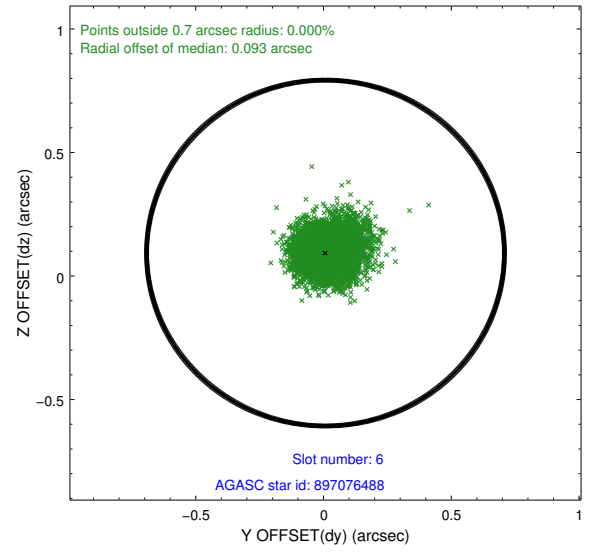
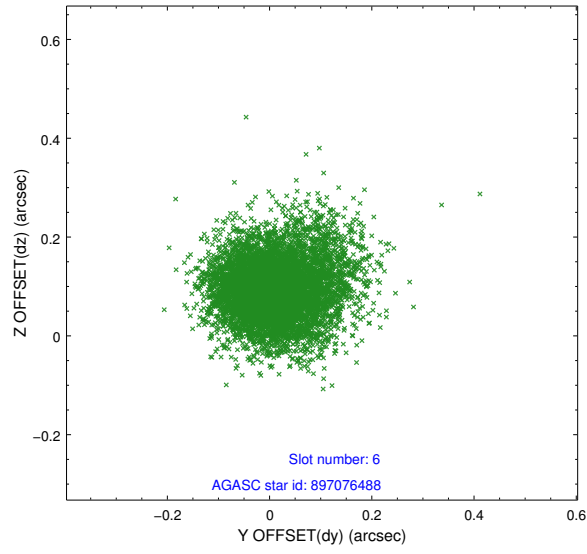
## 2.4.2 Slot 4



### 2.4.3 Slot 5

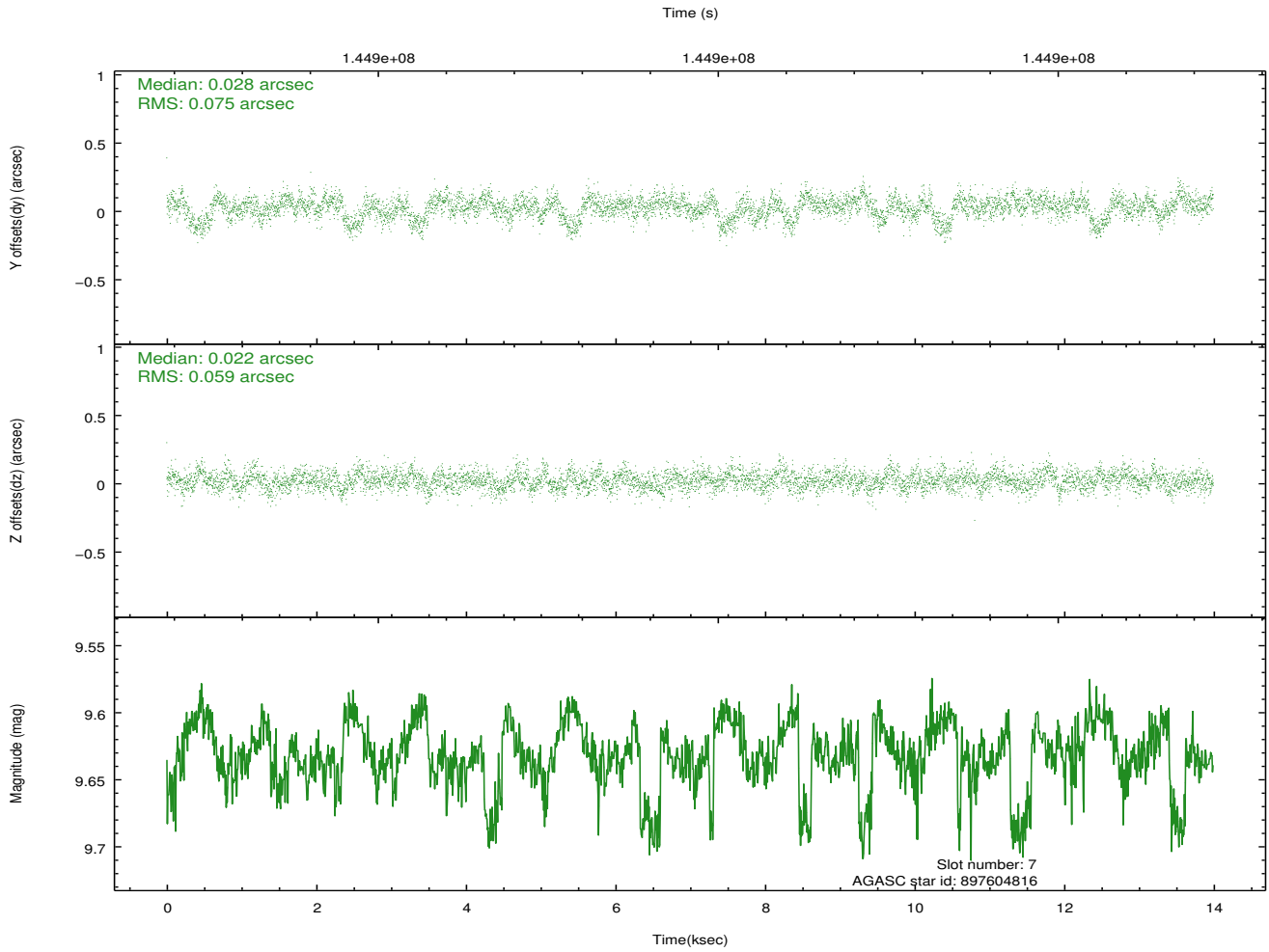
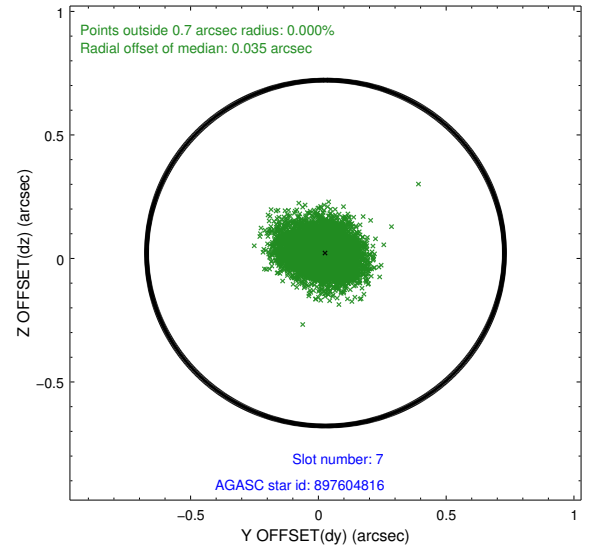
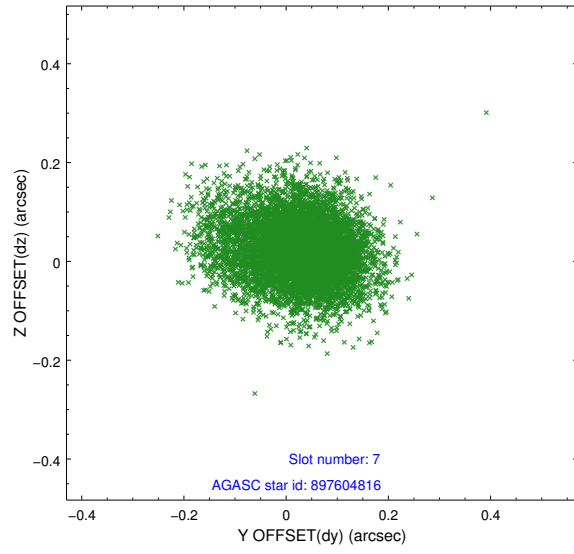


## 2.4.4 Slot 6



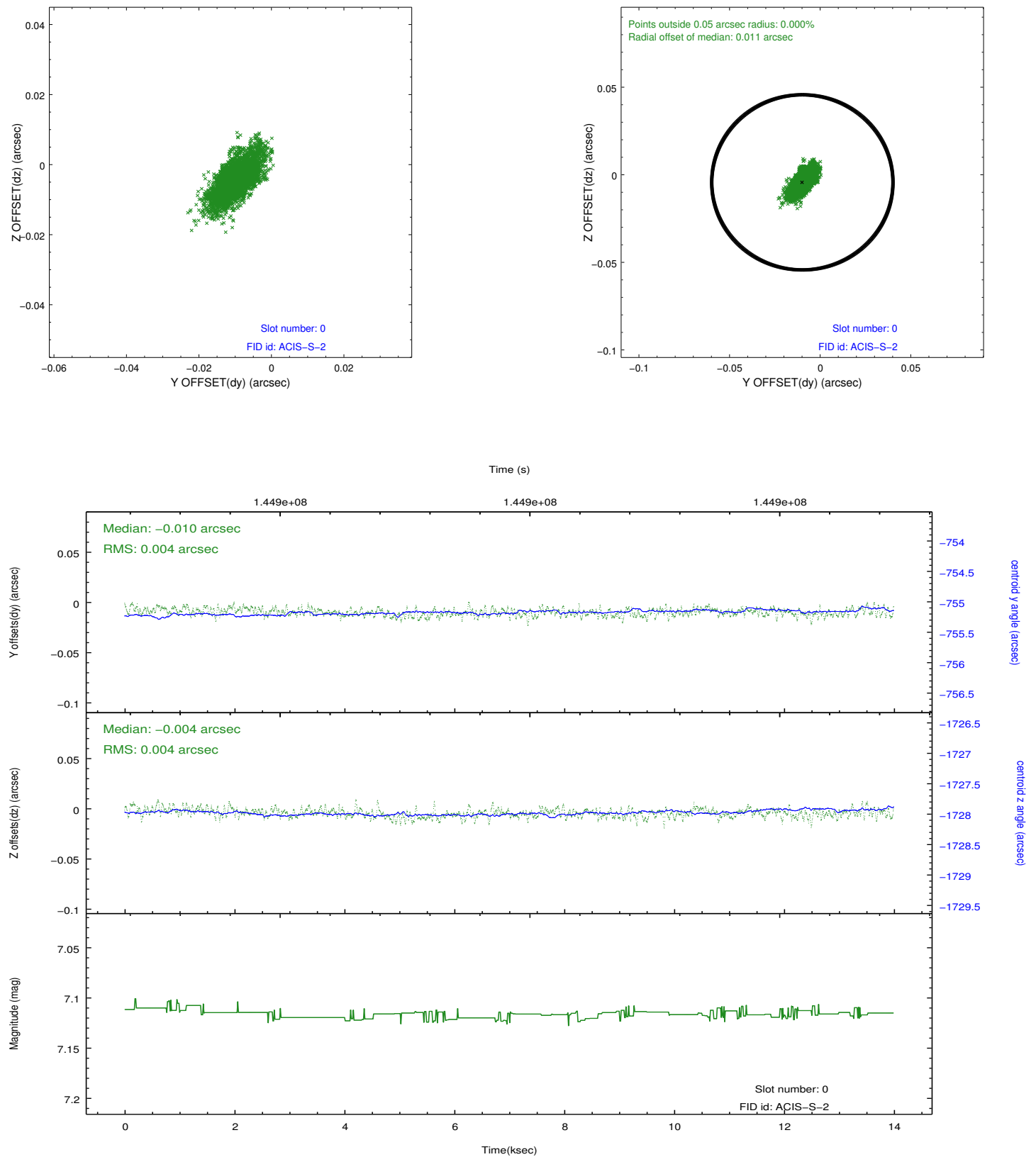


### 2.4.5 Slot 7

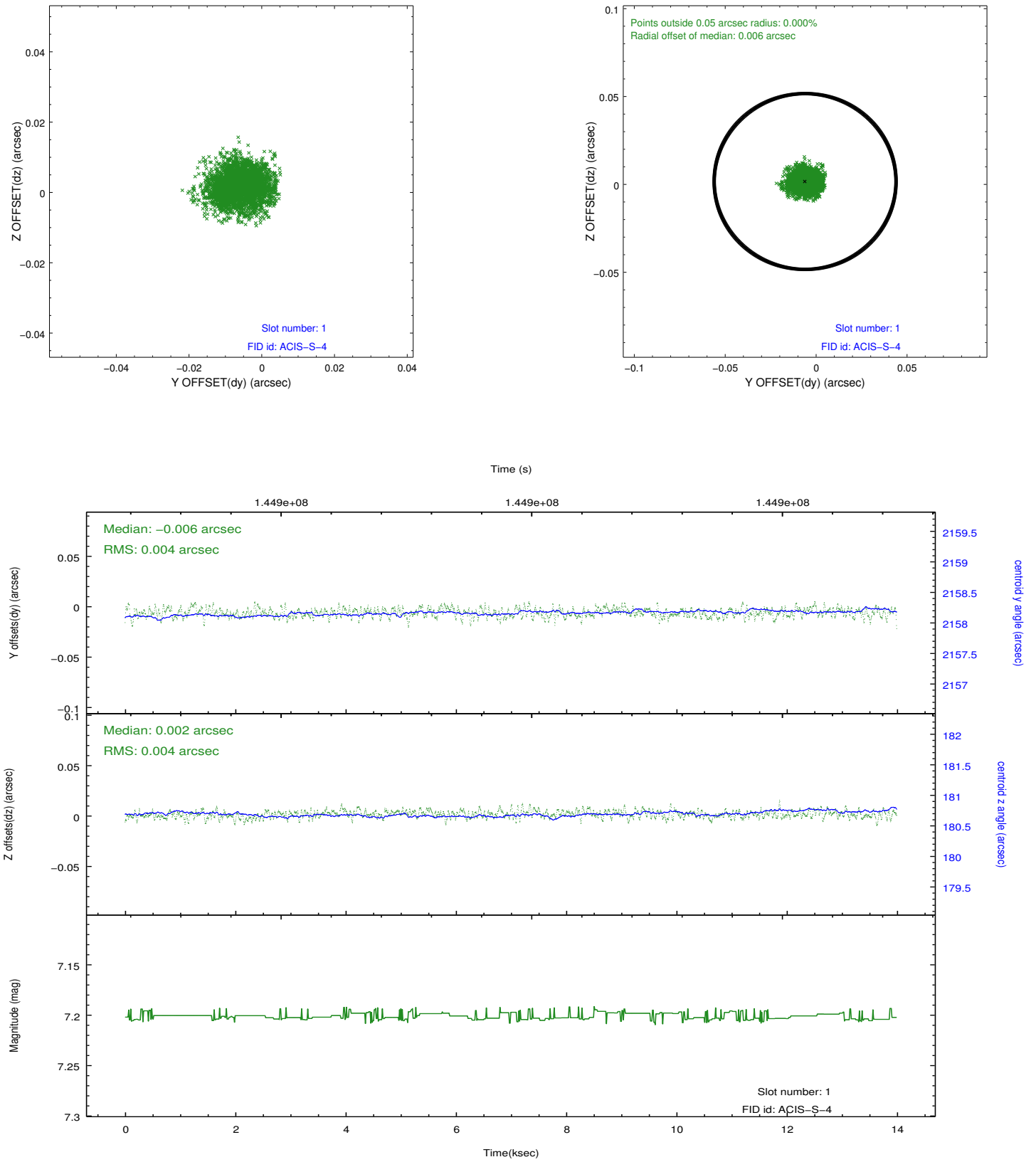


## 2.5 FID Slots

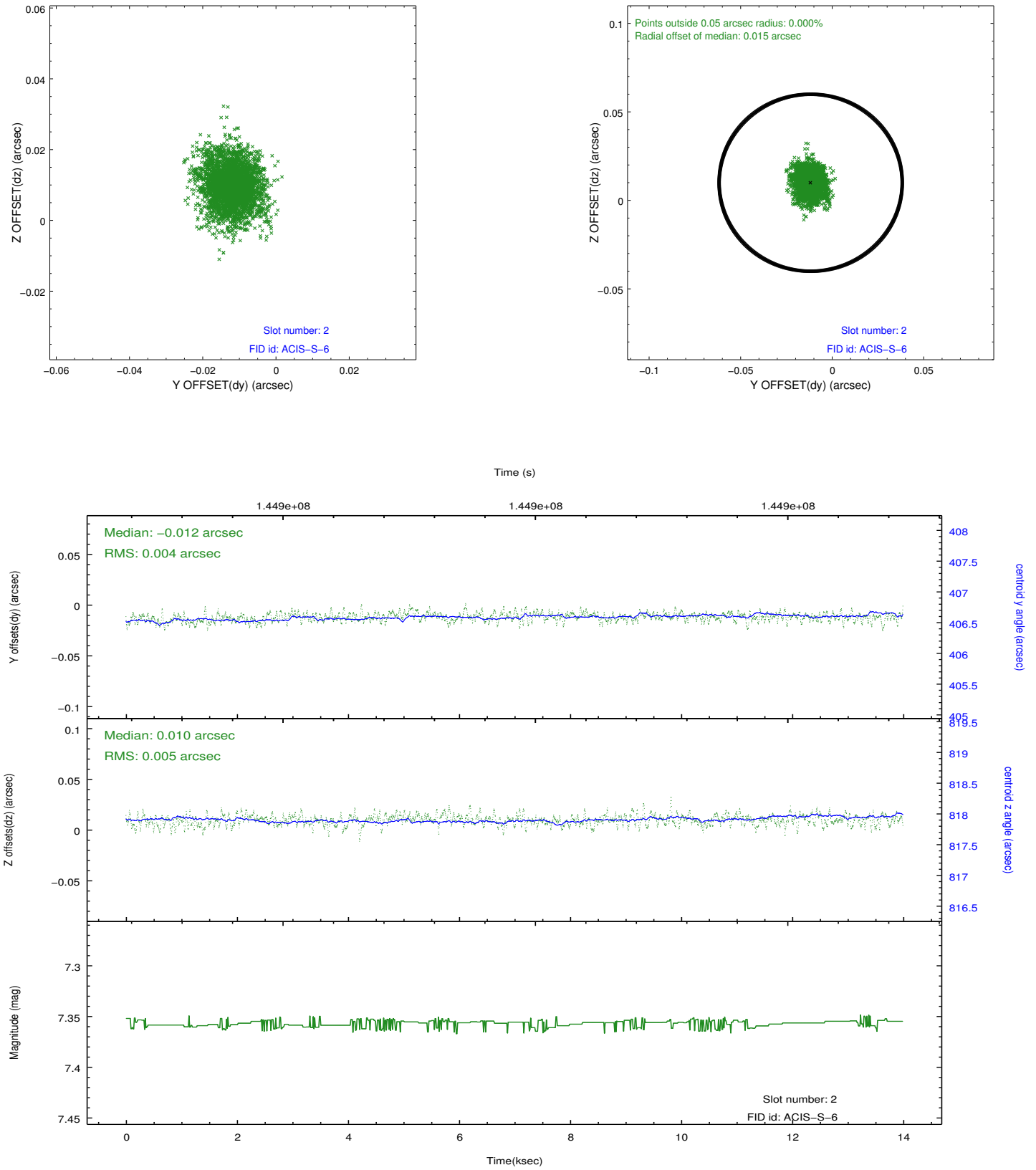
### 2.5.1 Slot 0



## 2.5.2 Slot 1



### 2.5.3 Slot 2



## A Summary

### A.1 Status

V&V Scientist	Jen Lauer
V&V Date (YYYY-MM-DD)	2012.10.22
V&V Edition	1
V&V Disposition and Status	OK
V&V Charge Time	13.689

### A.2 Comments

Monitor constraint not met, follow obs2684 by 32 days instead of requested 30.