

# V&V Reference Report

## L2 ASCDS Version : 8.4.5

Observation 2683 - L2 Version 3  
Chandra X-Ray Center

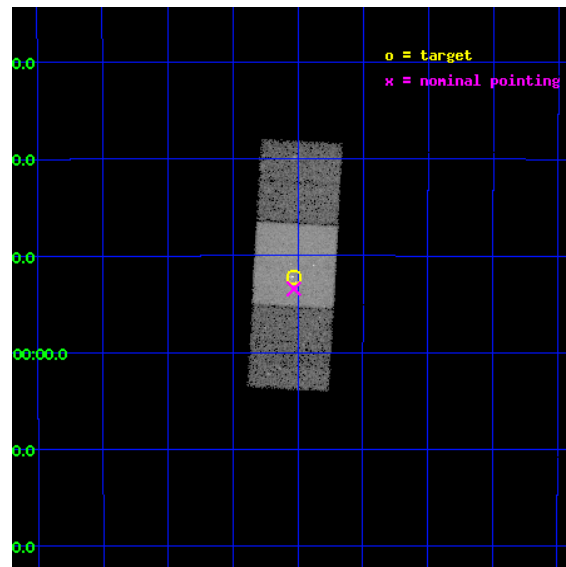
L2 Processing Date : Oct 13 2012

## Contents

<b>1</b>	<b>Front</b>	<b>2</b>
<b>2</b>	<b>OBI</b>	<b>3</b>
2.1	OBI . . . . .	3
2.1.1	Images . . . . .	3
2.1.2	Bias . . . . .	3
2.1.3	Parameters . . . . .	4
2.1.4	Events . . . . .	4
2.2	Compared Parameters . . . . .	5
2.3	Aspect . . . . .	6
2.4	Star Slots . . . . .	9
2.4.1	Slot 3 . . . . .	9
2.4.2	Slot 4 . . . . .	10
2.4.3	Slot 5 . . . . .	11
2.4.4	Slot 6 . . . . .	12
2.4.5	Slot 7 . . . . .	13
2.5	FID Slots . . . . .	14
2.5.1	Slot 0 . . . . .	14
2.5.2	Slot 1 . . . . .	15
2.5.3	Slot 2 . . . . .	16
<b>A</b>	<b>Summary</b>	<b>17</b>
A.1	Status . . . . .	17
A.2	Comments . . . . .	17

# 1 Front

seq_num	300084	Sequence number
obs_id	2683	Observation id
title	MULTIWAVELENGTH STUDY OF THE GLOBULAR CLUSTER M28 (NGC~6626)	Propo
observer	Prof. Dr. Werner Becker	Principal investigator
object	M28	Source name
dtcycle	0	&#160
cycle	P	events from which exps? Prim/Second/Both
ra_targ	276.133333	Observer's specified target RA [deg]
dec_targ	-24.869639	Observer's specified target Dec [deg]
ra_nom	276.13269315255	Nominal RA [deg]
dec_nom	-24.89040815264	Nominal Dec [deg]
roll_nom	273.15760254579	Nominal Roll [deg]
revision	3	Processing version of data
ontime	14295.868711203	Sum of GTIs [s]
livetime	14109.082662026	Livetime [s]
ontime6	14295.8276712	Sum of GTIs [s]
ontime7	14295.868711203	Sum of GTIs [s]
ontime8	14292.64567098	Sum of GTIs [s]
l2events	86198	Number of level 2 events

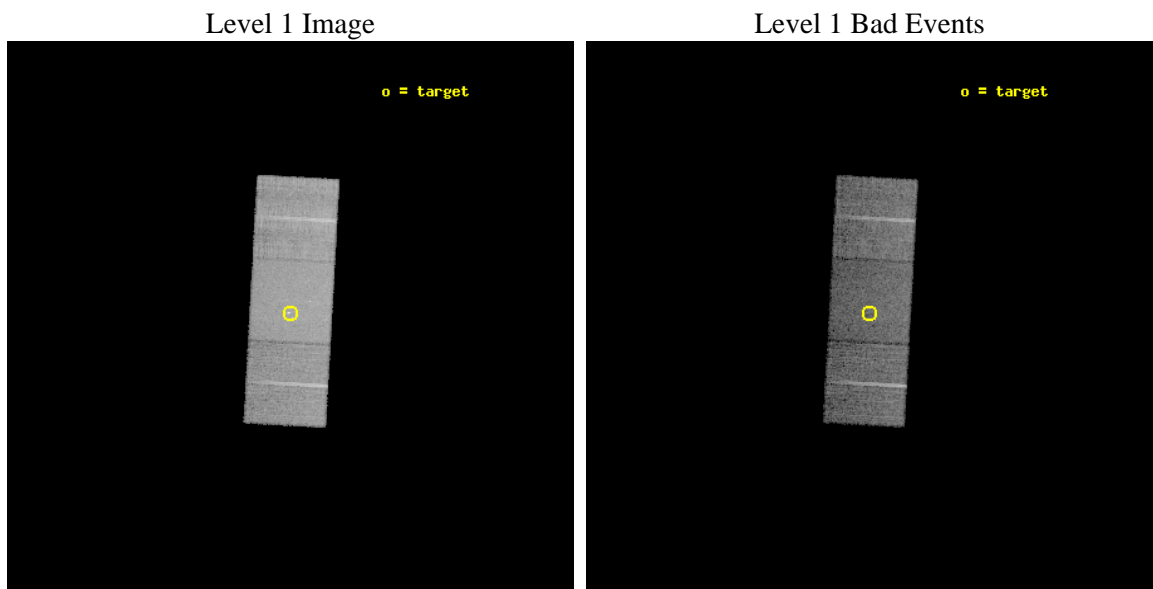




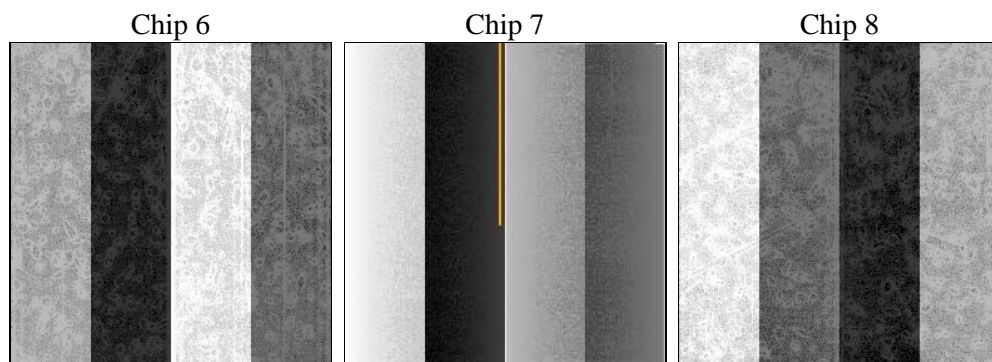
## 2 OBI

### 2.1 OBI

#### 2.1.1 Images



#### 2.1.2 Bias



### 2.1.3 Parameters

obi_num	3	Obi number	sched_exp_time	13933.000000	[s] Scheduled observation exposure time
ascdsver	8.4.5	Processing system revision	ontime	14295.868711203	Sum of GTIs [s]
caldsver	4.5.2	&#160	ontime6	14295.8276712	Sum of GTIs [s]
date	2012-10-13T05:59:31	Date and time of file creation	ontime7	14295.868711203	Sum of GTIs [s]
revision	3	Processing version of data	ontime8	14292.64567098	Sum of GTIs [s]
			l1events	342163	Number of level 1 events

### 2.1.4 Events

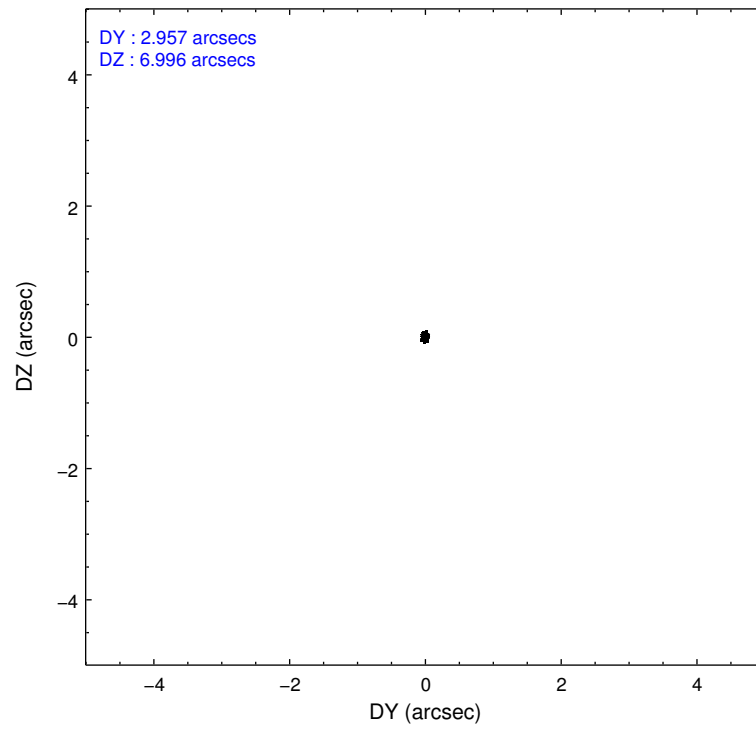
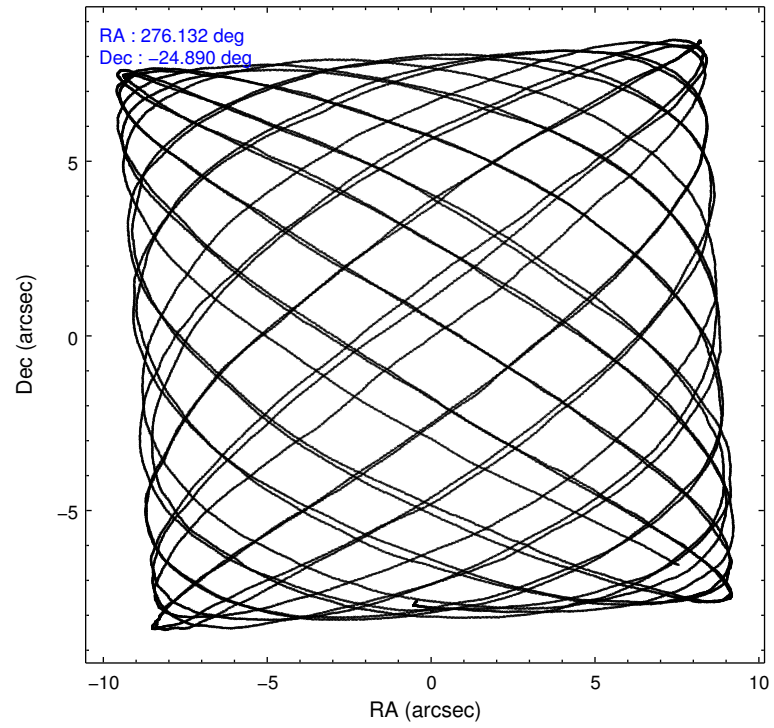
	<b>ccd 6</b>	<b>ccd 7</b>	<b>ccd 8</b>
level 1 events	90824	127457	123882
rejected events	76226	66918	88631
rejected %	83%	52%	71%

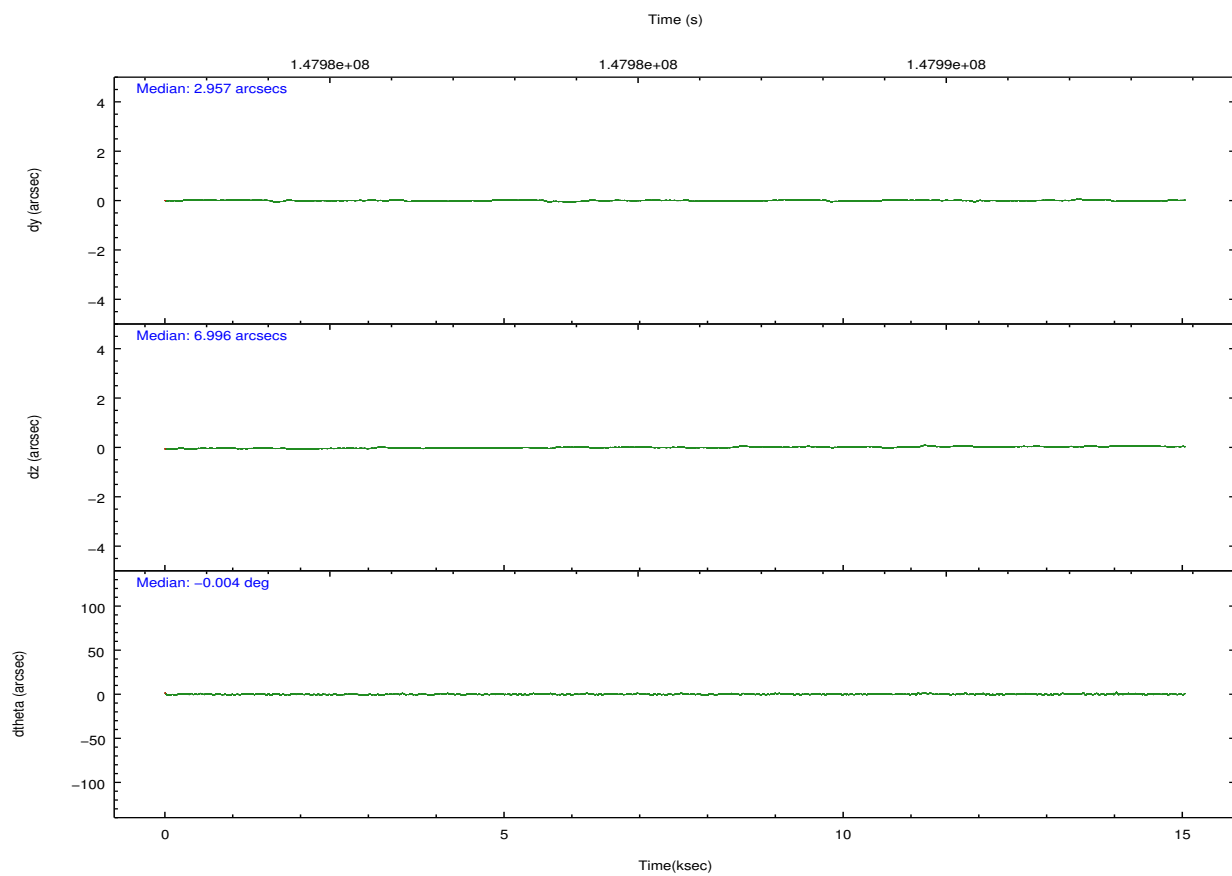
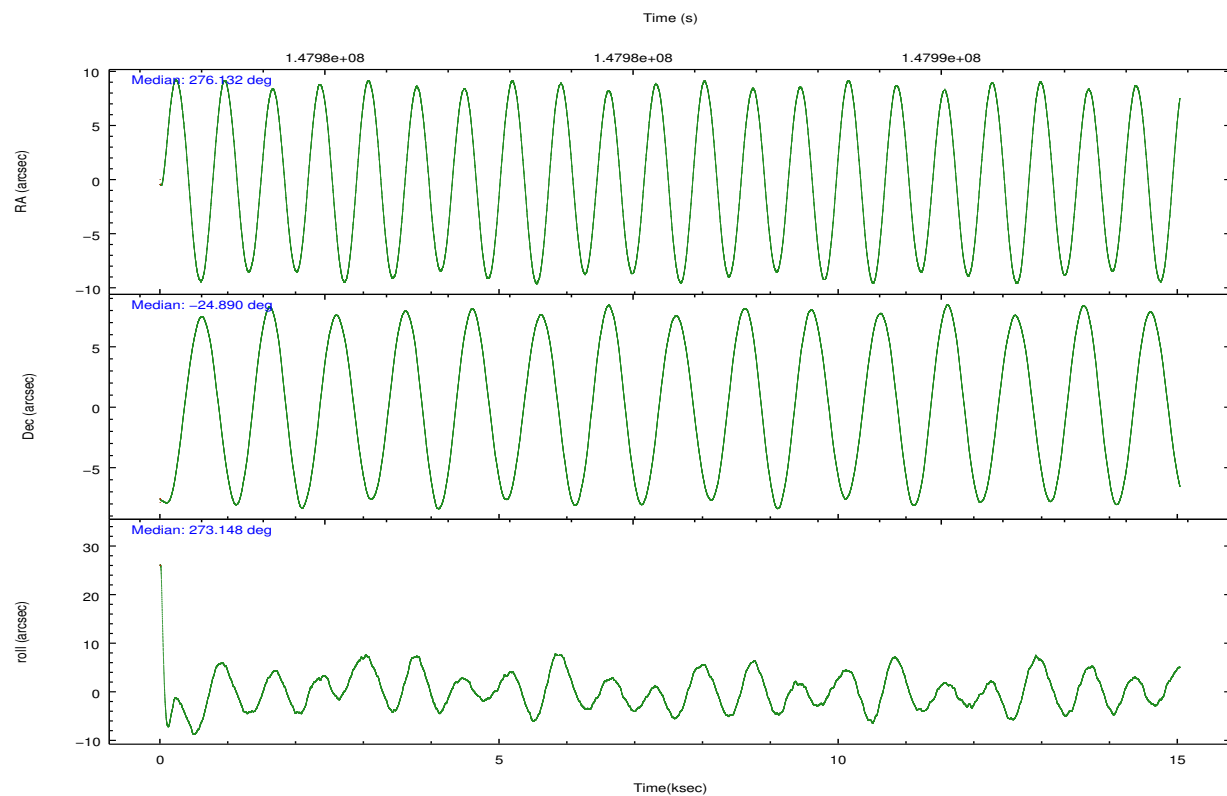
	<b>ccd 6</b>	<b>ccd 7</b>	<b>ccd 8</b>
grade 0 events	7379	6828	13343
	8%	5%	10%
grade 1 events	41	124	110
	0%	0%	0%
grade 2 events	2792	12045	6339
	3%	9%	5%
grade 3 events	1056	5471	4328
	1%	4%	3%
grade 4 events	1021	5462	3933
	1%	4%	3%
grade 5 events	3832	11097	5013
	4%	8%	4%
grade 6 events	2358	30778	7320
	2%	24%	5%
grade 7 events	72345	55652	83496
	79%	43%	67%

## 2.2 Compared Parameters

Parameter	Planned	Actual	Parameter	Planned	Actual
Instrument	ACIS	ACIS	Obspar format version number	7	7
Detector	ACIS-678	ACIS-678	Obspar file type	PREDICTED	ACTUAL
Grating	NONE	NONE	Obspar update status	NONE	UPDATED
Data mode	VFAINT	VFAINT	Number of optional ACIS chips dropped	0	0
Observation mode	POINTING	POINTING	On-chip summing requested	N	N
[deg] Pointing RA	276.115936	276.1326931525521	Subarray requested	NONE	NONE
[deg] Pointing Dec	-24.867800	-24.89040815263962	Alternating exposures requested	N	N
[deg] Pointing Roll	272.993895	273.1576025457865	[s] Primary exposure time	0.000000	3.1
[mm] SIM focus pos	-0.684267	-0.6828225247311905			
[mm] SIM defocus	0	0.001444936568705701			
[mm] SIM translation stage pos	-190.132523	-190.1400660498719			
[mm] SIM translation stage offset	0	0.00754346686406393			
[s] Observation start time (MET)	147979185.184000	147977767.61041			
Observation start date	2002-09-09T17:18:41	2002-09-09T16:56:07			
[s] Observation end time (MET)	147993118.184000	147993584.89856			
Observation end date	2002-09-09T21:10:54	2002-09-09T21:19:44			
Read mode	TIMED	TIMED			

## 2.3 Aspect



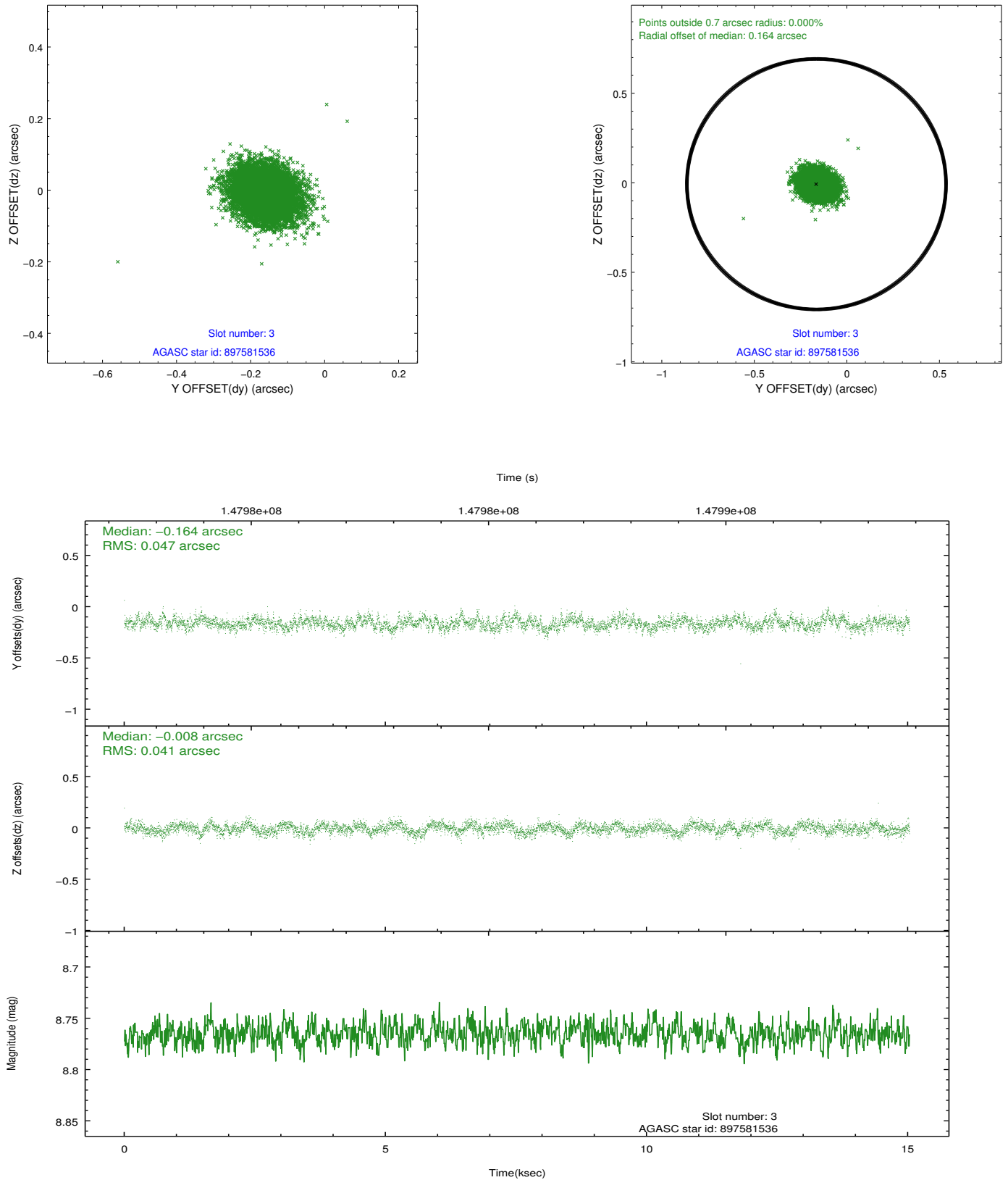


### Slot Statistics

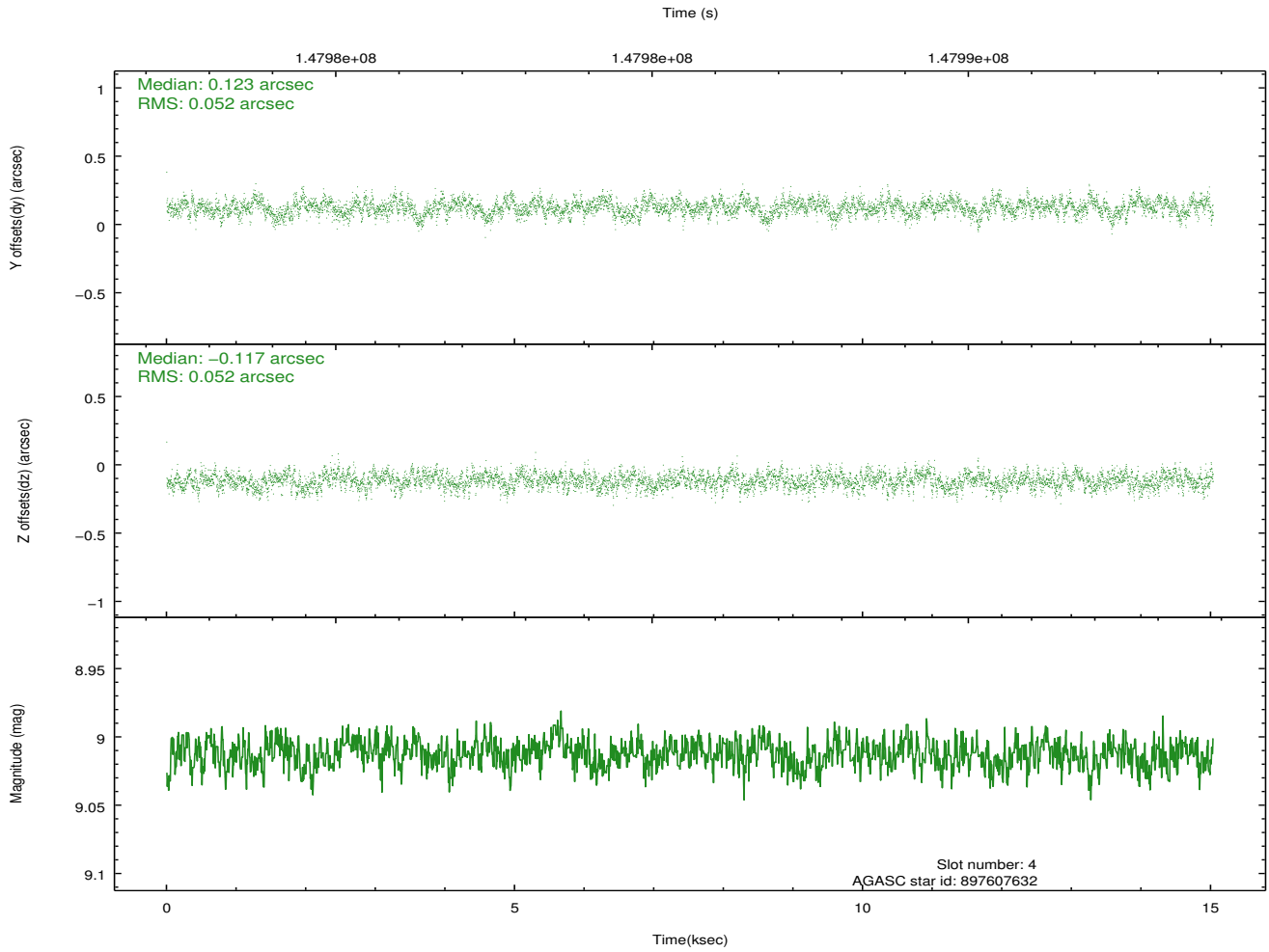
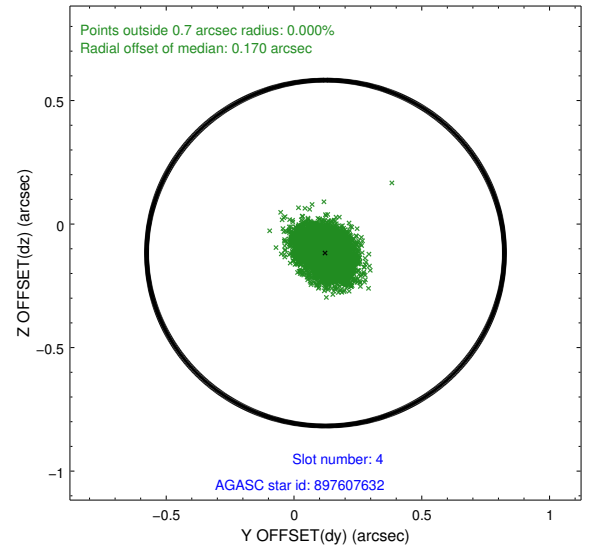
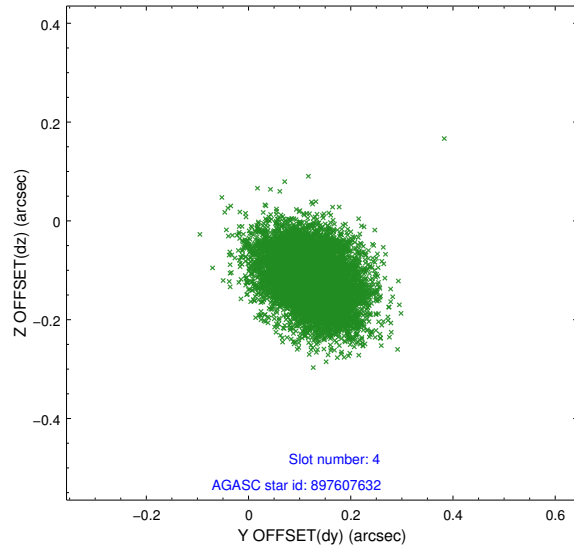
slot	status	id	mag	n_pts	med_dy	med_dz	dr1	dr2	ra	dec	mean_y	mean_z
0	FID	ACIS-S-2	7.12	3668	-0.016	-0.010	0.006	0.011	0.000000	0.000000	-755.60	-1728.17
1	FID	ACIS-S-4	7.20	3667	0.003	0.004	0.006	0.010	0.000000	0.000000	2157.55	180.03
2	FID	ACIS-S-6	7.35	3667	-0.014	0.013	0.007	0.012	0.000000	0.000000	406.76	817.76
3	GUIDE	897581536	8.77	7330	-0.164	-0.008	0.067	0.107	276.270189	-24.414428	-1602.61	590.63
4	GUIDE	897607632	9.01	7330	0.123	-0.117	0.079	0.127	275.528210	-25.239953	1243.28	-1980.62
5	GUIDE	897076488	9.45	7331	-0.094	-0.030	0.088	0.143	275.884089	-24.287832	-2123.03	-650.75
6	GUIDE	897604816	9.64	7320	0.037	0.035	0.113	0.188	276.024863	-24.968377	346.84	-315.05
7	GUIDE	899302416	9.98	7325	0.099	0.117	0.132	0.213	276.809098	-24.823125	-35.92	2270.58

## 2.4 Star Slots

### 2.4.1 Slot 3

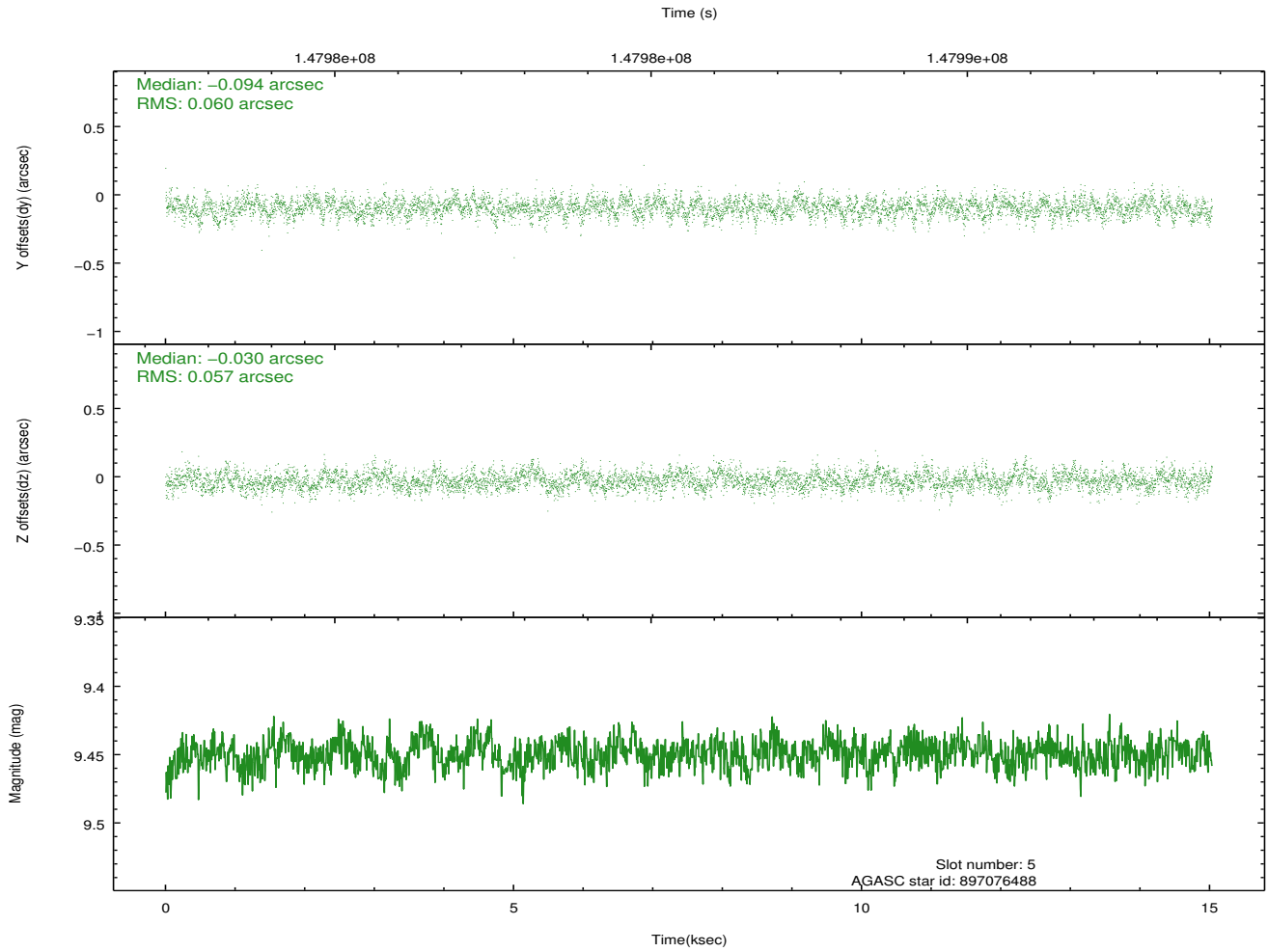
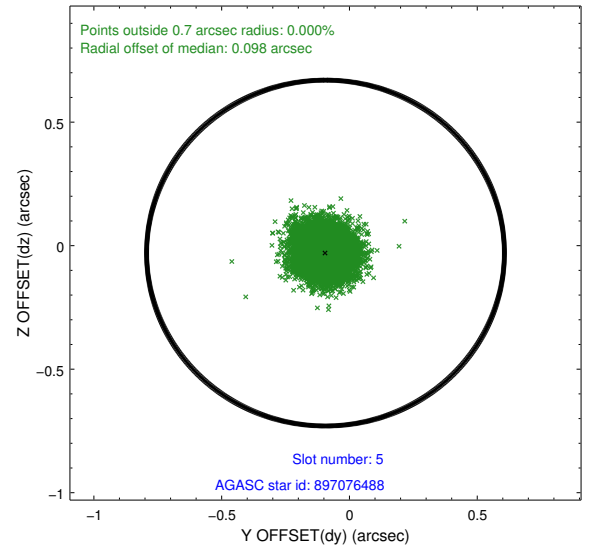
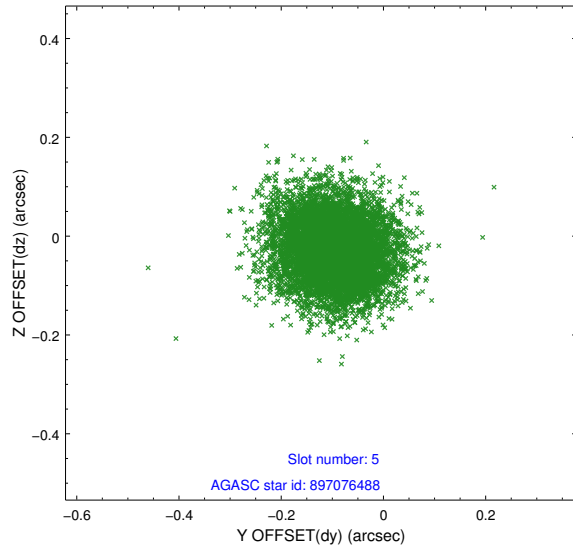


## 2.4.2 Slot 4

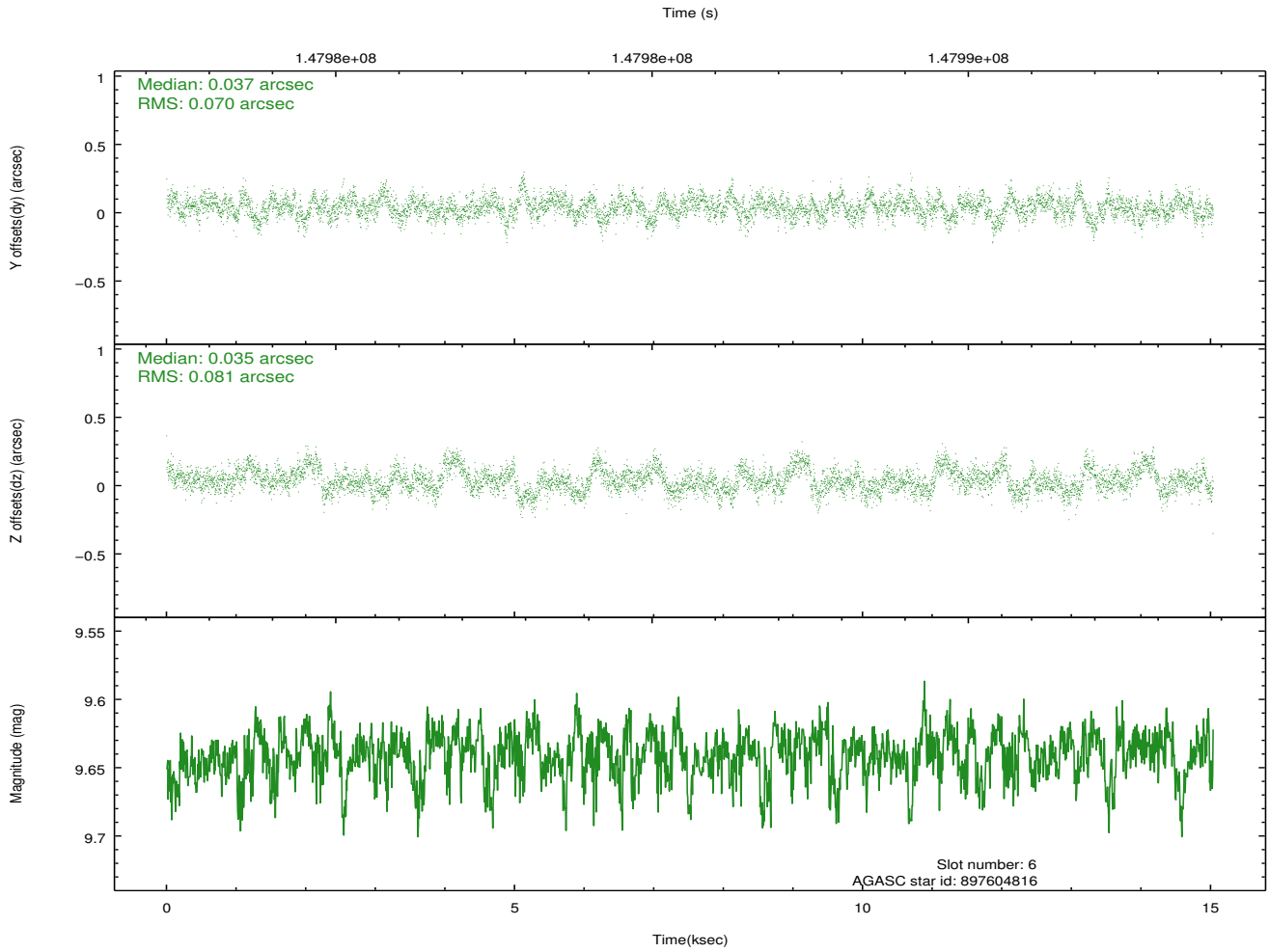
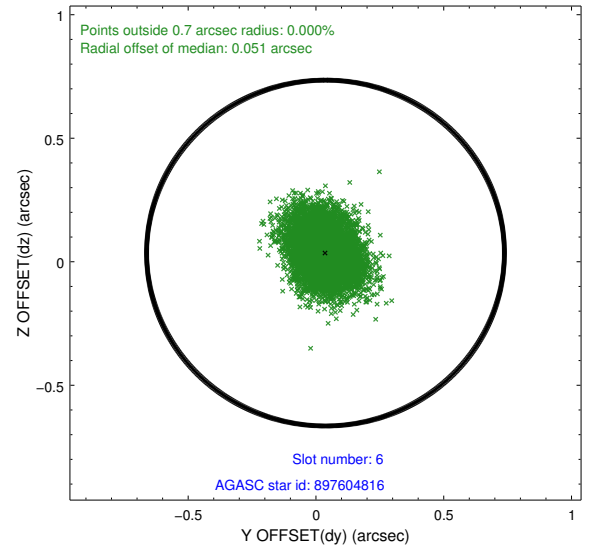
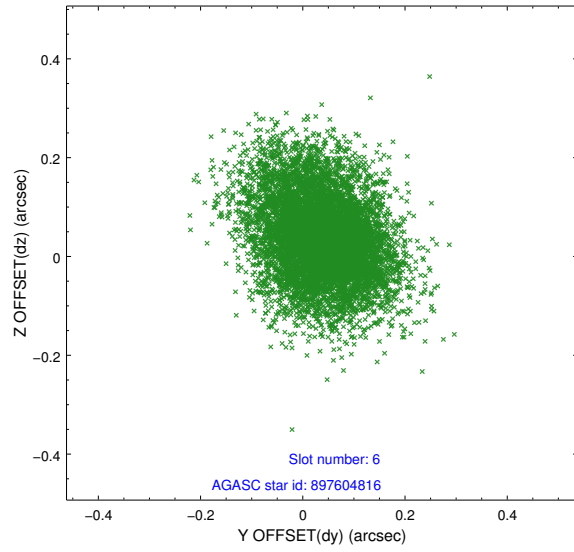




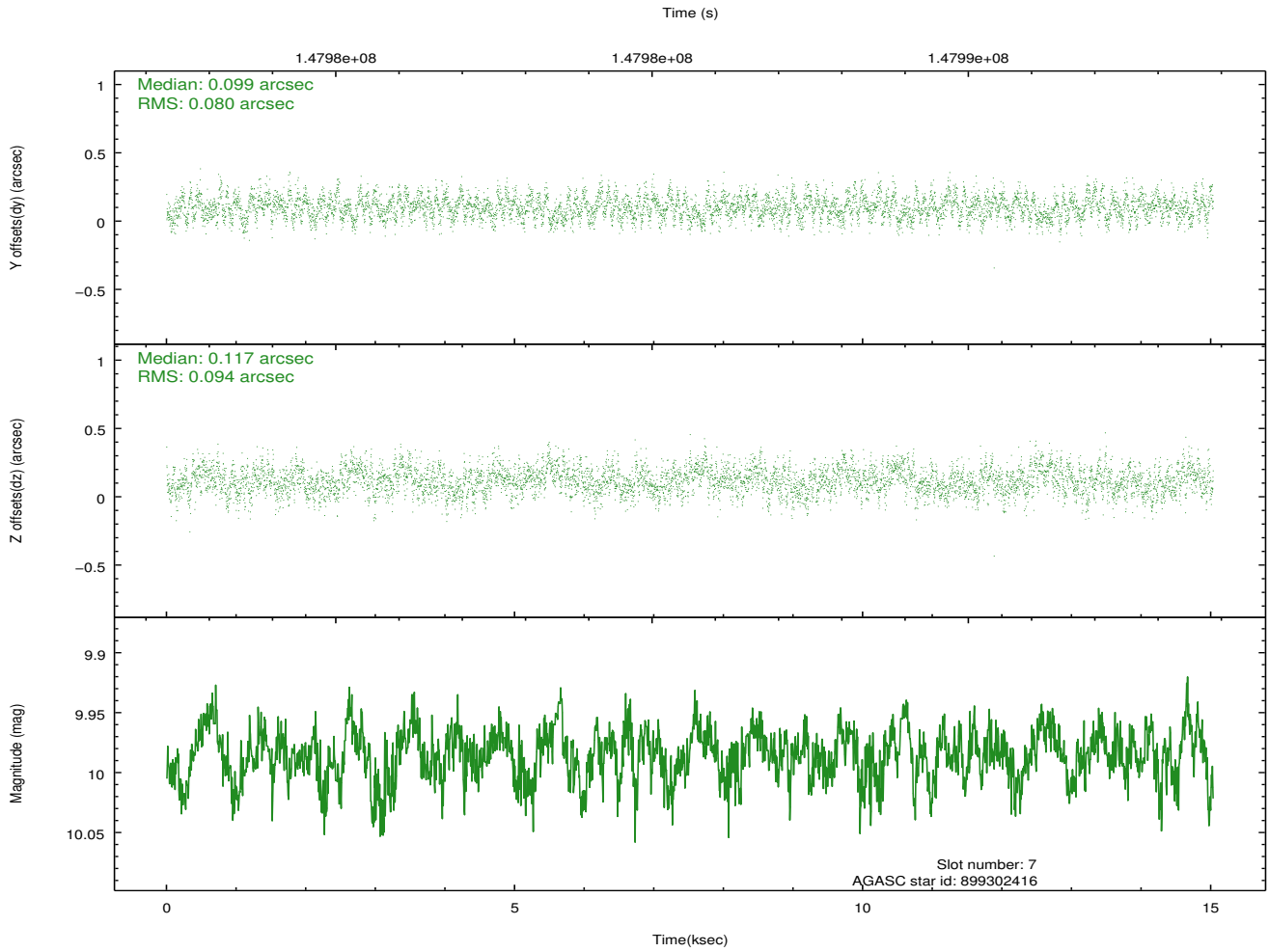
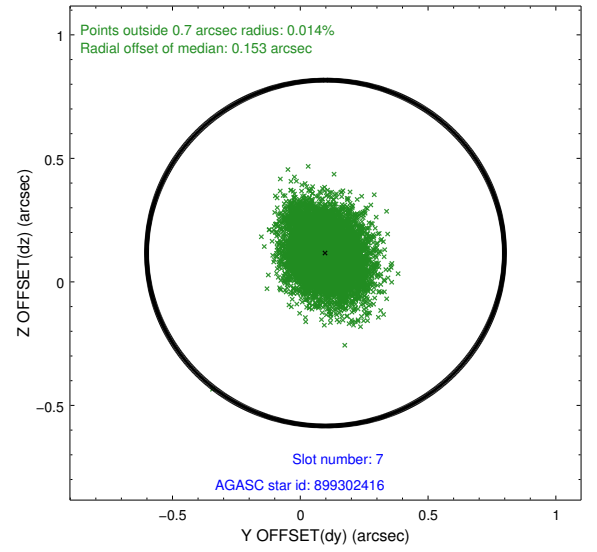
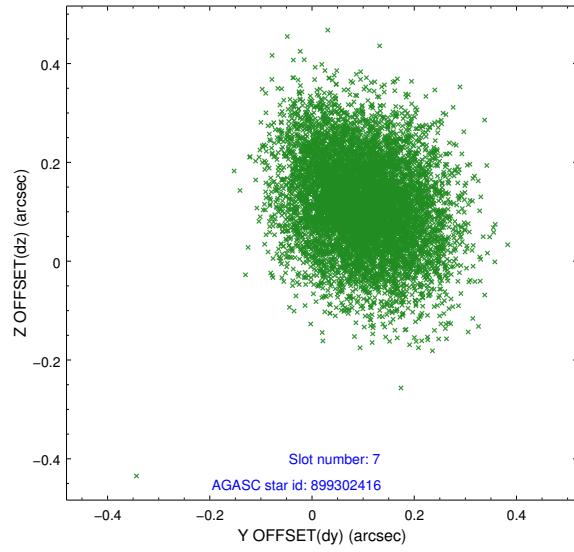
### 2.4.3 Slot 5



## 2.4.4 Slot 6

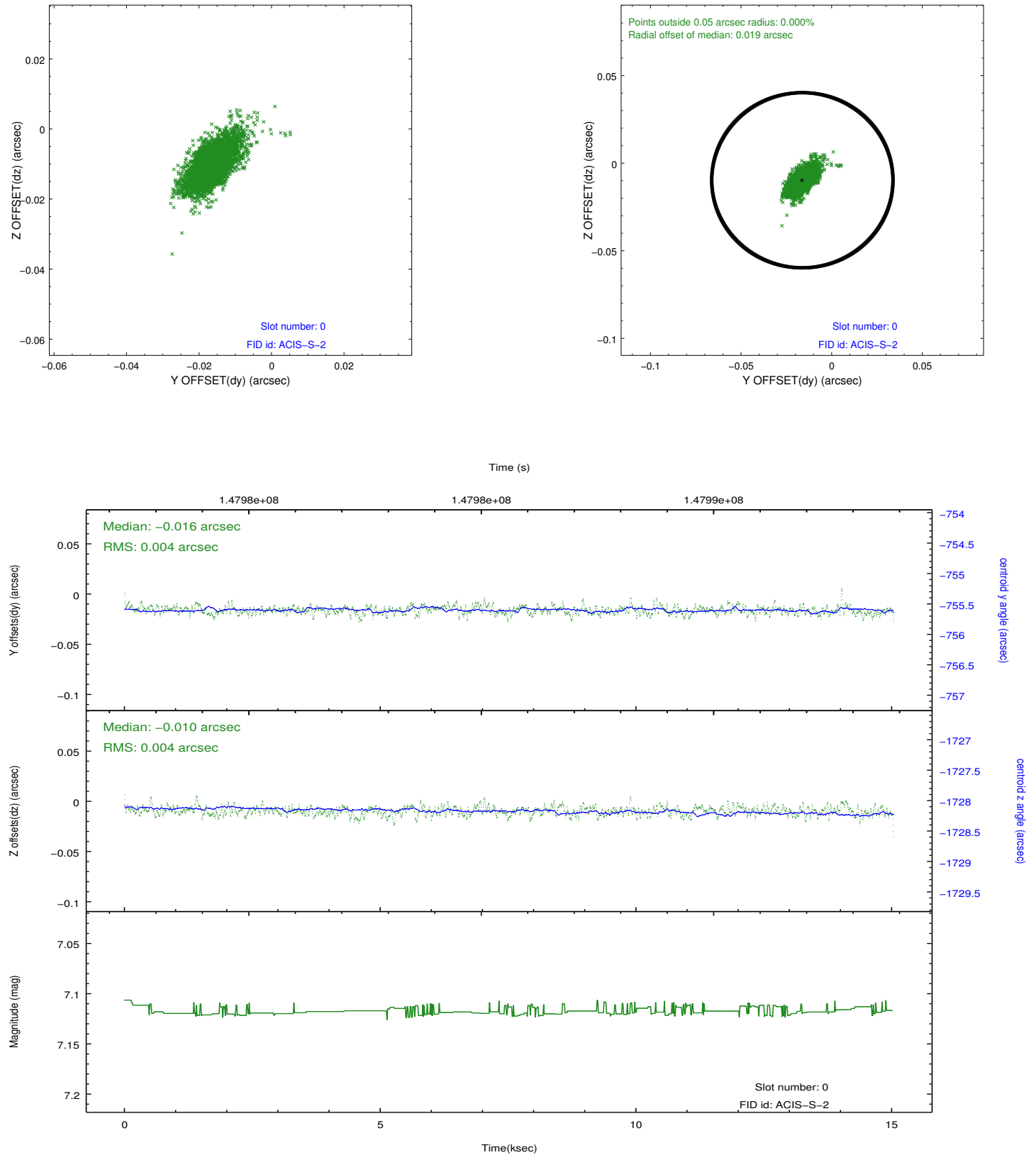


## 2.4.5 Slot 7

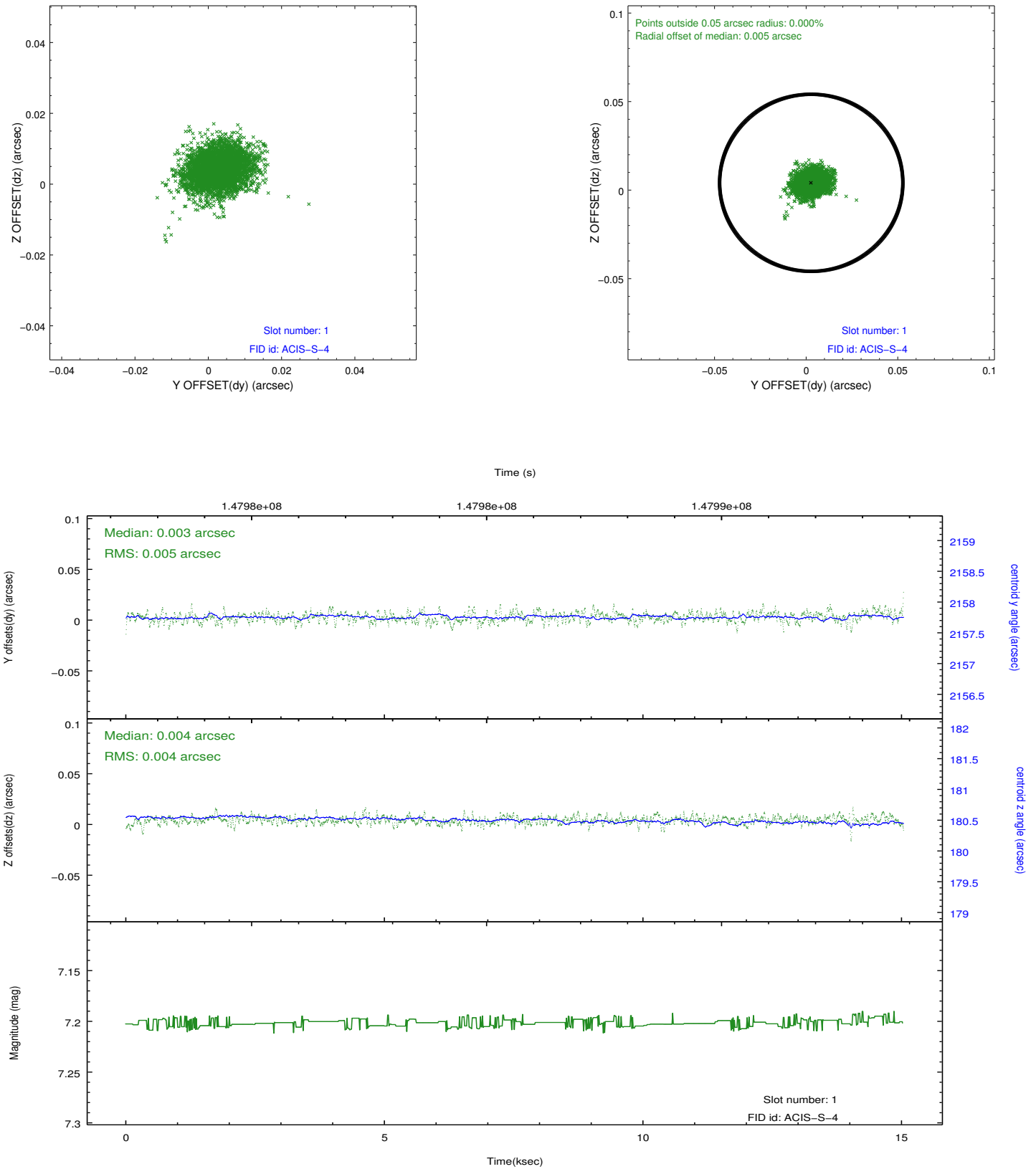


## 2.5 FID Slots

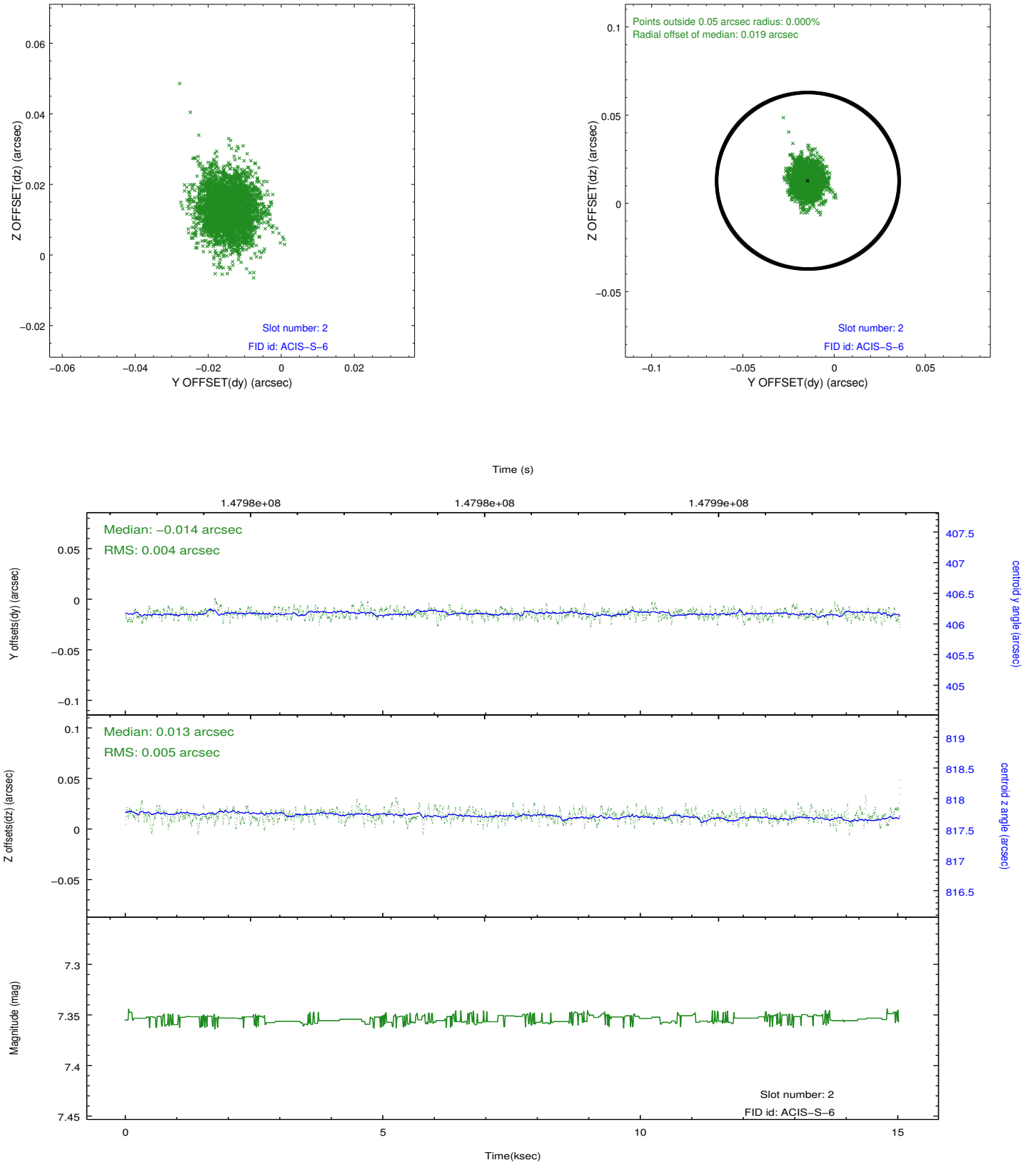
### 2.5.1 Slot 0



## 2.5.2 Slot 1



### 2.5.3 Slot 2



## A Summary

### A.1 Status

V&V Scientist	Jen Lauer
V&V Date (YYYY-MM-DD)	2012.10.22
V&V Edition	1
V&V Disposition and Status	OK
V&V Charge Time	14.297

### A.2 Comments