

# V&V Reference Report

## L2 ASCDS Version : 8.4.5

Observation 2681 - L2 Version 4  
Chandra X-Ray Center

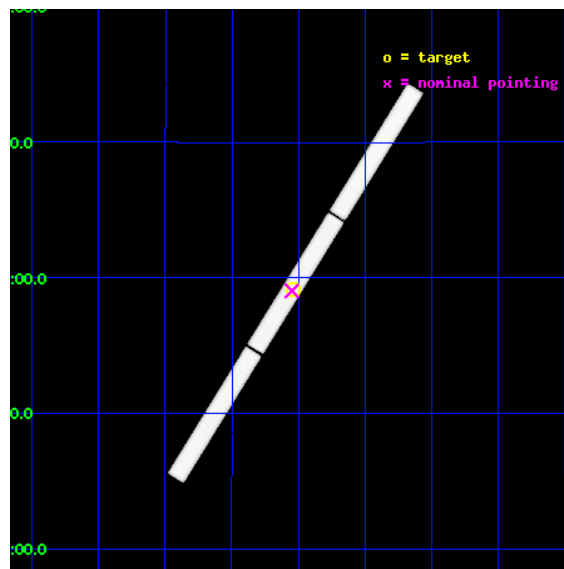
L2 Processing Date : Oct 11 2012

## Contents

<b>1</b>	<b>Front</b>	<b>2</b>
<b>2</b>	<b>OBI</b>	<b>3</b>
2.1	OBI . . . . .	3
2.1.1	Images . . . . .	3
2.1.2	Parameters . . . . .	4
2.1.3	Events . . . . .	4
2.2	Compared Parameters . . . . .	5
2.3	Aspect . . . . .	6
2.4	Star Slots . . . . .	9
2.4.1	Slot 3 . . . . .	9
2.4.2	Slot 4 . . . . .	10
2.4.3	Slot 5 . . . . .	11
2.4.4	Slot 6 . . . . .	12
2.4.5	Slot 7 . . . . .	13
2.5	FID Slots . . . . .	14
2.5.1	Slot 0 . . . . .	14
2.5.2	Slot 1 . . . . .	15
2.5.3	Slot 2 . . . . .	16
<b>3</b>	<b>Gratings</b>	<b>17</b>
3.1	LETG Arm . . . . .	17
<b>A</b>	<b>Summary</b>	<b>19</b>
A.1	Status . . . . .	19
A.2	Comments . . . . .	19

# 1 Front

seq_num	300082	Sequence number
obs_id	2681	Observation id
title	MULTIWAVELENGTH OBSERVATIONS OF V1494 AQL IN OUTBURST	Proposal tit
observer	Regents' Professor Sumner Starrfield	Principal investigator
object	V1494 AQL	Source name
ra_targ	290.772083	Observer's specified target RA [deg]
dec_targ	4.956	Observer's specified target Dec [deg]
ra_nom	290.77445223611	Nominal RA [deg]
dec_nom	4.9519520320917	Nominal Dec [deg]
roll_nom	301.88581060353	Nominal Roll [deg]
revision	4	Processing version of data
ontime	25841.532284051	[s]
liveltime	25679.267665018	Ontime multiplied by DTCOR
l2events	1333757	Number of level 2 events

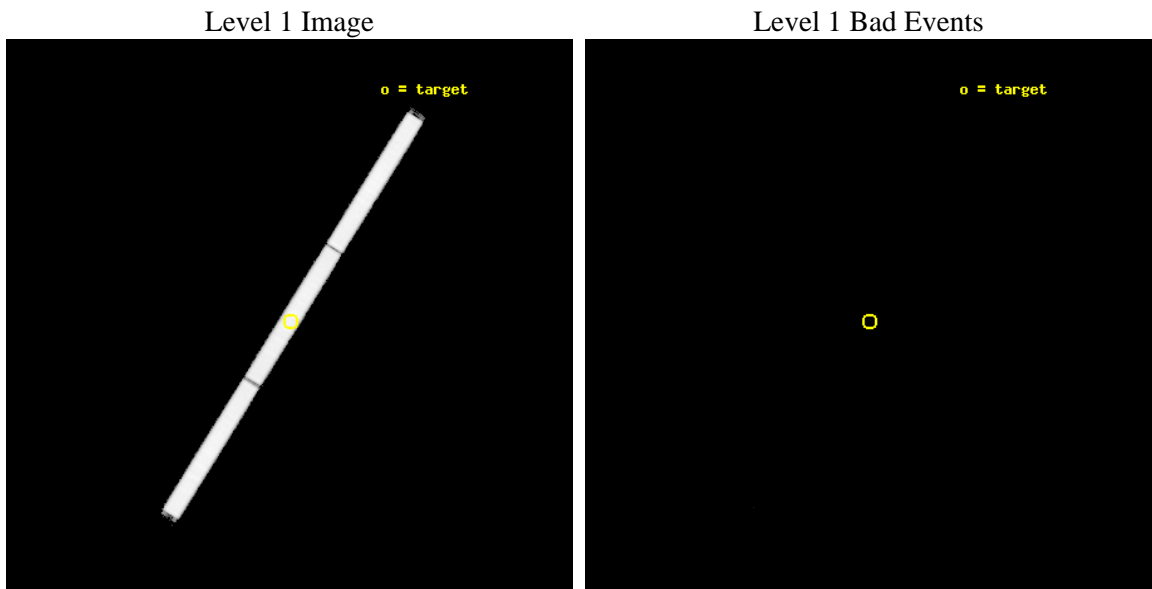




## 2 OBI

### 2.1 OBI

#### 2.1.1 Images



### 2.1.2 Parameters

obi_num	1	Obi number	sched_exp_time	25274.225000	[s] Scheduled observation exposure time
ascdsver	8.4.5	Processing system revision	ontime	25841.532284051	[s]
caldsver	4.5.2	&#160	l1events	1854684	Number of level 1 events
date	2012-09-28T06:27:26	Date and time of file creation			
revision	3	Processing version of data			

### 2.1.3 Events

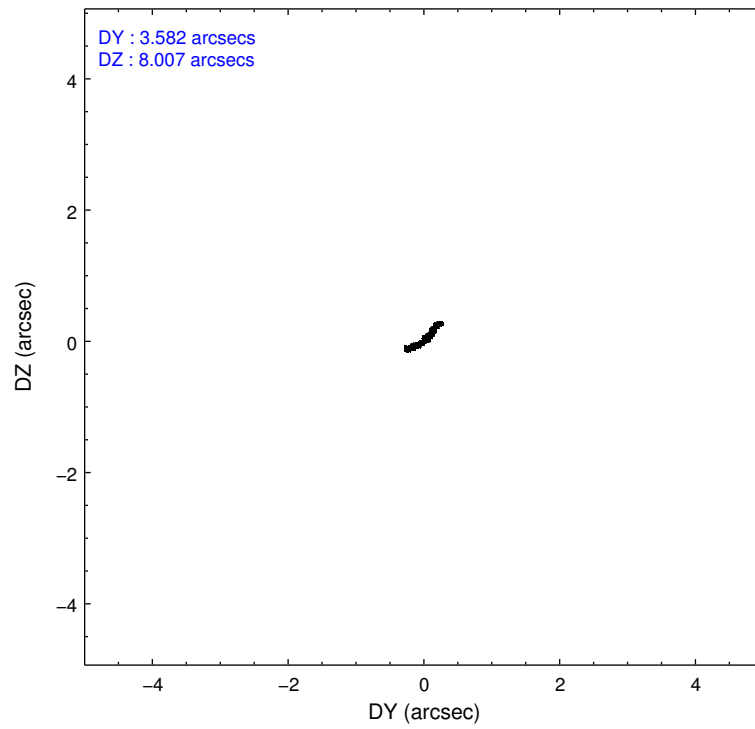
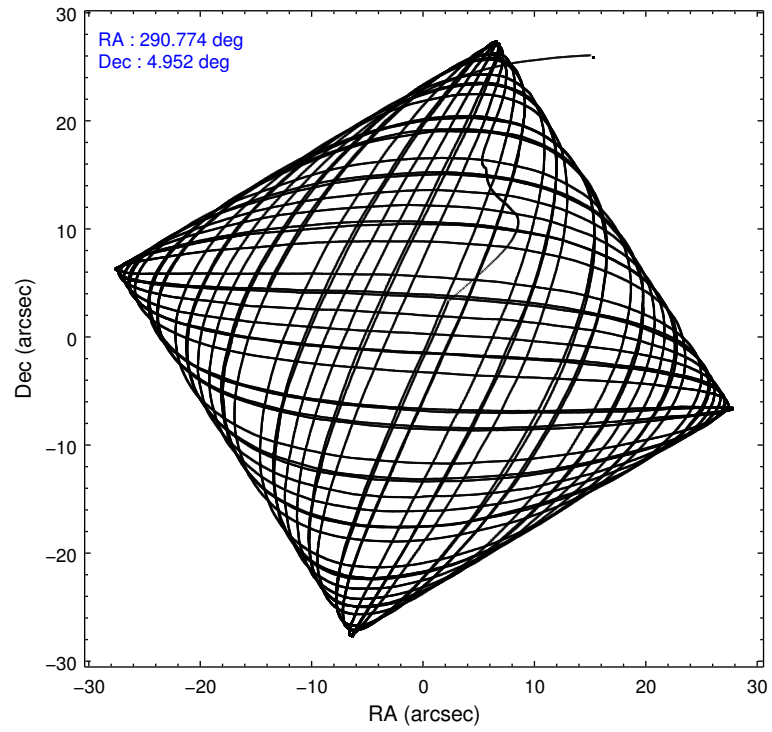
Level 1 Events

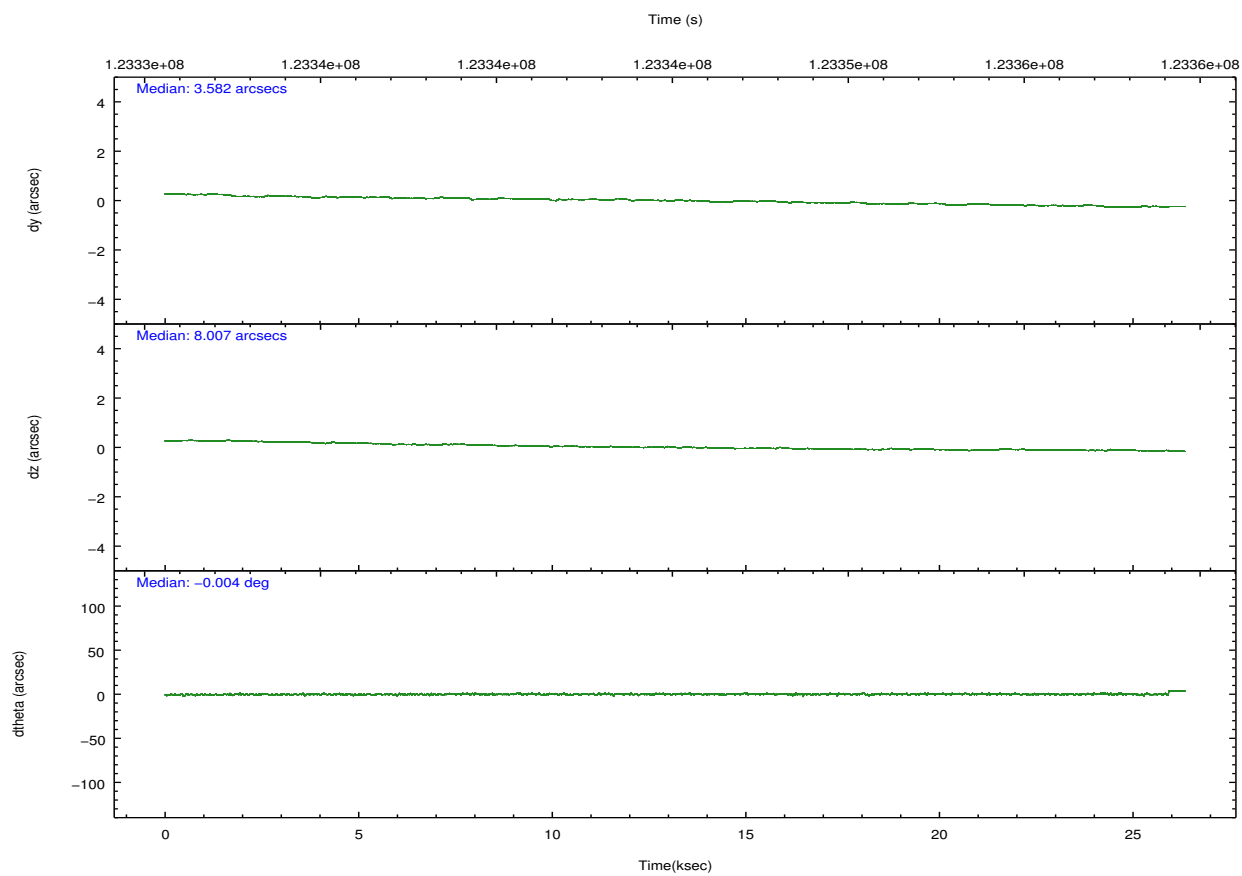
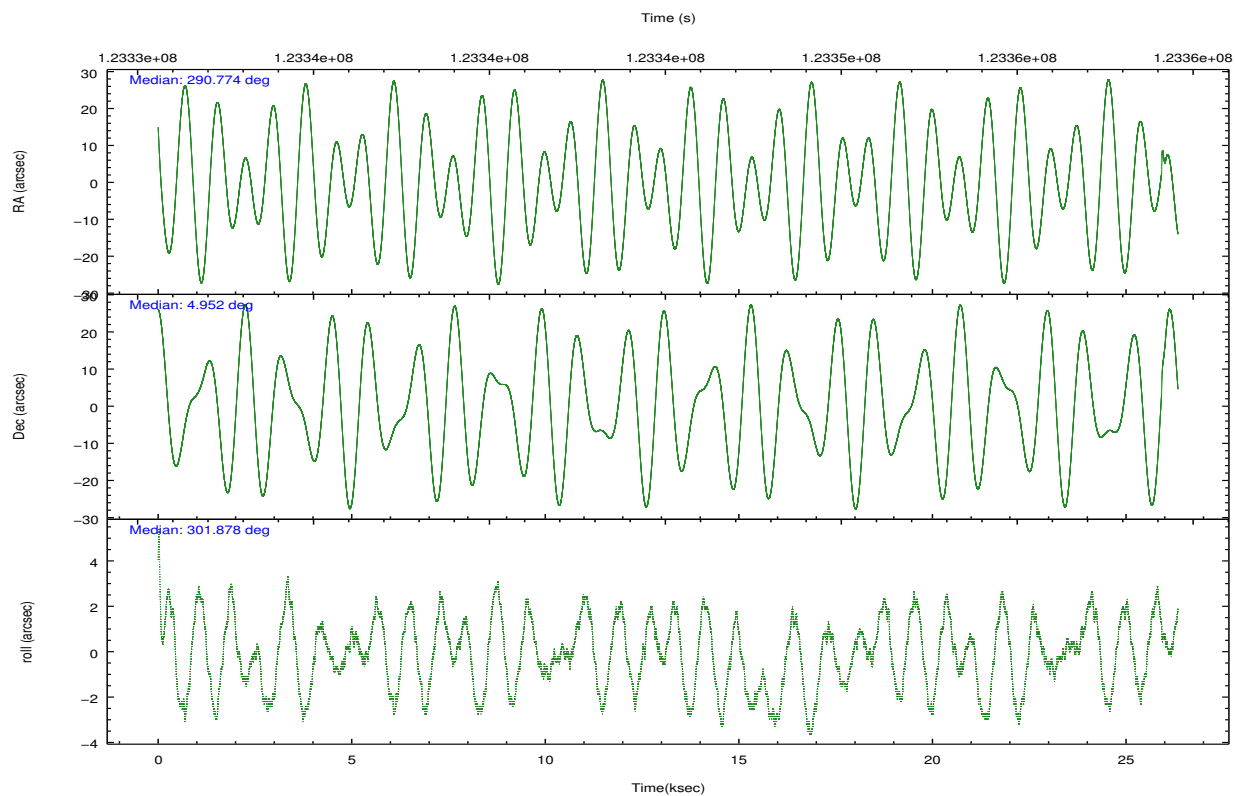
	<b>segment 1</b>	<b>segment 2</b>	<b>segment 3</b>
level 1 events	638175	593622	622887
rejected events	15859	15176	15905
rejected %	2%	2%	2%

## 2.2 Compared Parameters

Parameter	Planned	Actual	Parameter	Planned	Actual
Instrument	HRC	HRC	Obspar format version number	7	7
Detector	HRC-S	HRC-S	Obspar file type	PREDICTED	ACTUAL
Grating	LETG	LETG	Obspar update status	NONE	UPDATED
Data mode	OBSERVING	OBSERVING			
Observation mode	POINTING	POINTING			
[deg] Pointing RA	290.748486	290.7744522361126			
[deg] Pointing Dec	4.964162	4.951952032091682			
[deg] Pointing Roll	301.820718	301.8858106035274			
[mm] SIM focus pos	-1.429586	-1.428180813131781			
[mm] SIM defocus	0.1037507710433287	0.1051558262725154			
[mm] SIM translation stage pos	250.455976	250.466033080201			
[mm] SIM translation stage offset	0	-0.01005468664627074			
[s] Observation start time (MET)	123332070.184000	123331122.44568			
Observation start date	2001-11-28T10:53:26	2001-11-28T10:38:42			
[s] Observation end time (MET)	123357344.184000	123359074.1968			
Observation end date	2001-11-28T17:54:40	2001-11-28T18:24:34			

## 2.3 Aspect



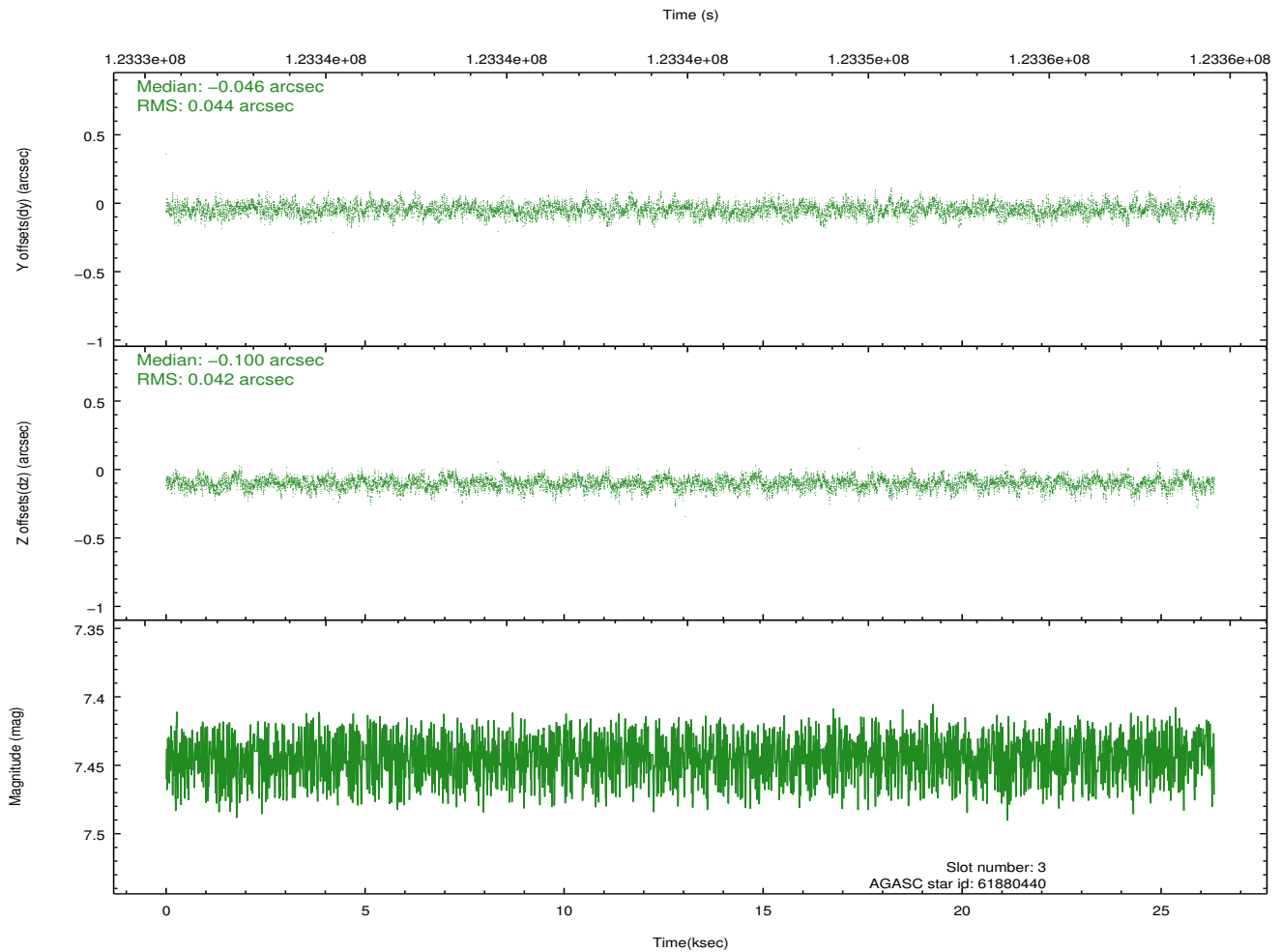
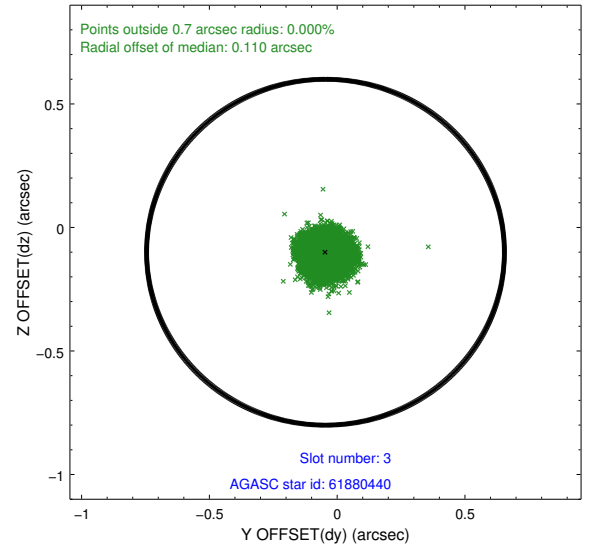
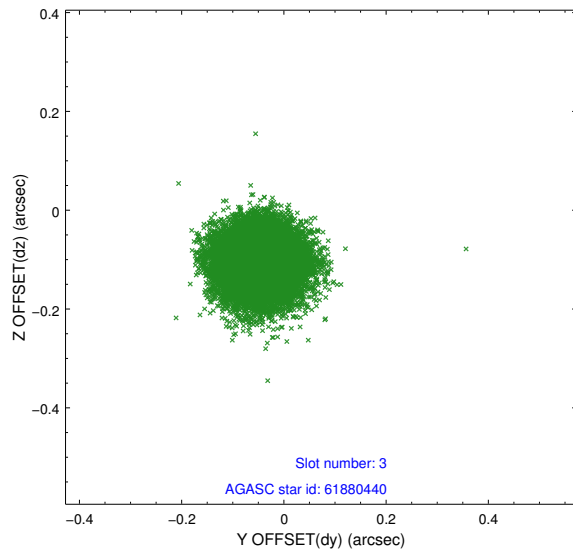


Slot Statistics

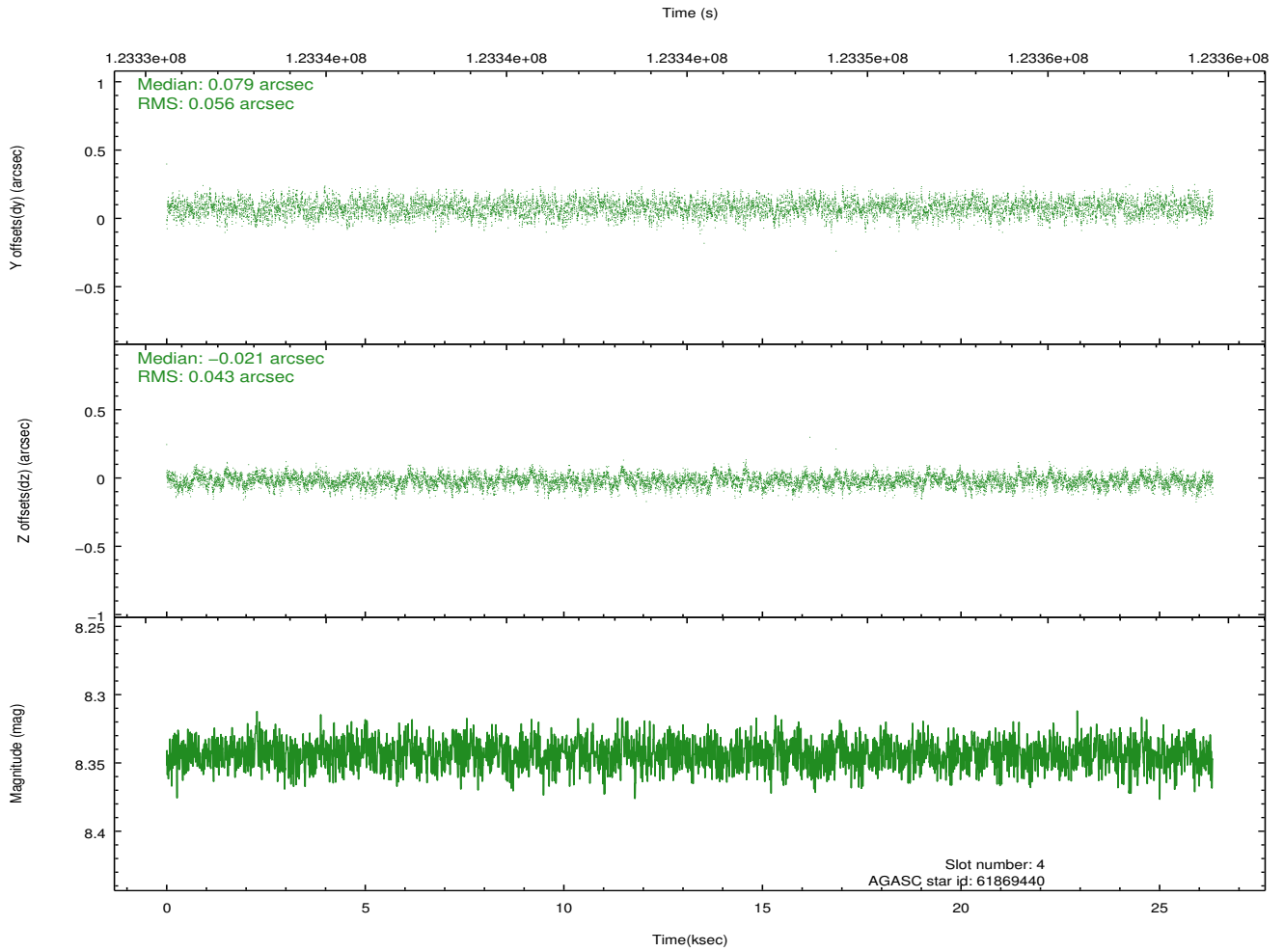
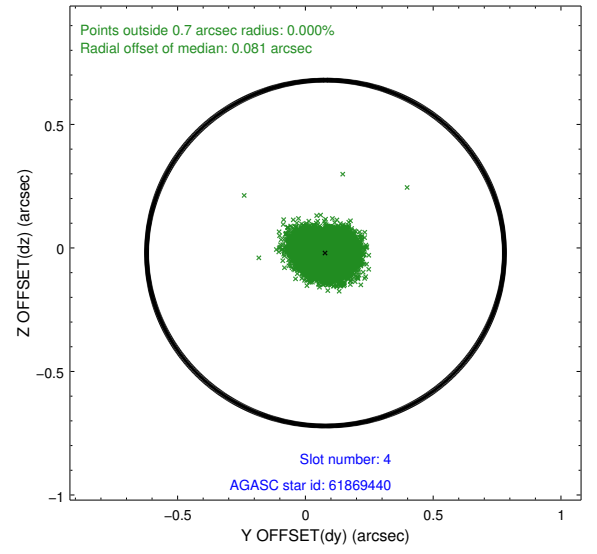
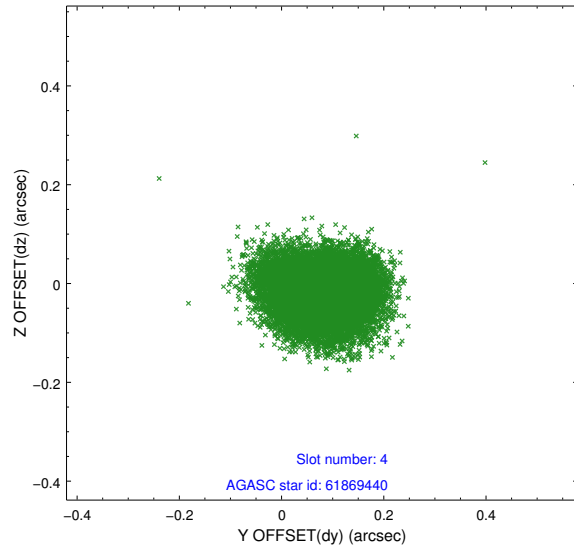
slot	status	id	mag	n_pts	med_dy	med_dz	dr1	dr2	ra	dec	mean_y	mean_z
0	FID	HRC-S-1	7.01	6326	0.162	-0.093	0.009	0.018	0.000000	0.000000	-1157.60	-456.59
1	FID	HRC-S-2	7.01	6325	0.073	-0.090	0.005	0.010	0.000000	0.000000	1241.81	-449.29
2	FID	HRC-S-3	7.04	6322	0.155	-0.119	0.009	0.018	0.000000	0.000000	-1160.13	572.84
3	GUIDE	61880440	7.44	12842	-0.046	-0.100	0.064	0.104	290.081203	4.777895	-691.72	-2387.13
4	GUIDE	61869440	8.34	12847	0.079	-0.021	0.076	0.122	290.487023	4.224981	1767.67	-2200.40
5	GUIDE	61871112	8.70	12845	-0.056	-0.005	0.074	0.119	290.340849	5.123147	-1255.86	-940.08
6	GUIDE	62013672	8.57	12842	-0.050	0.045	0.086	0.133	291.398358	5.180057	567.95	2390.50
7	GUIDE	62038712	9.22	12843	0.077	0.082	0.093	0.152	291.151100	5.399635	-570.53	2053.38

## 2.4 Star Slots

### 2.4.1 Slot 3

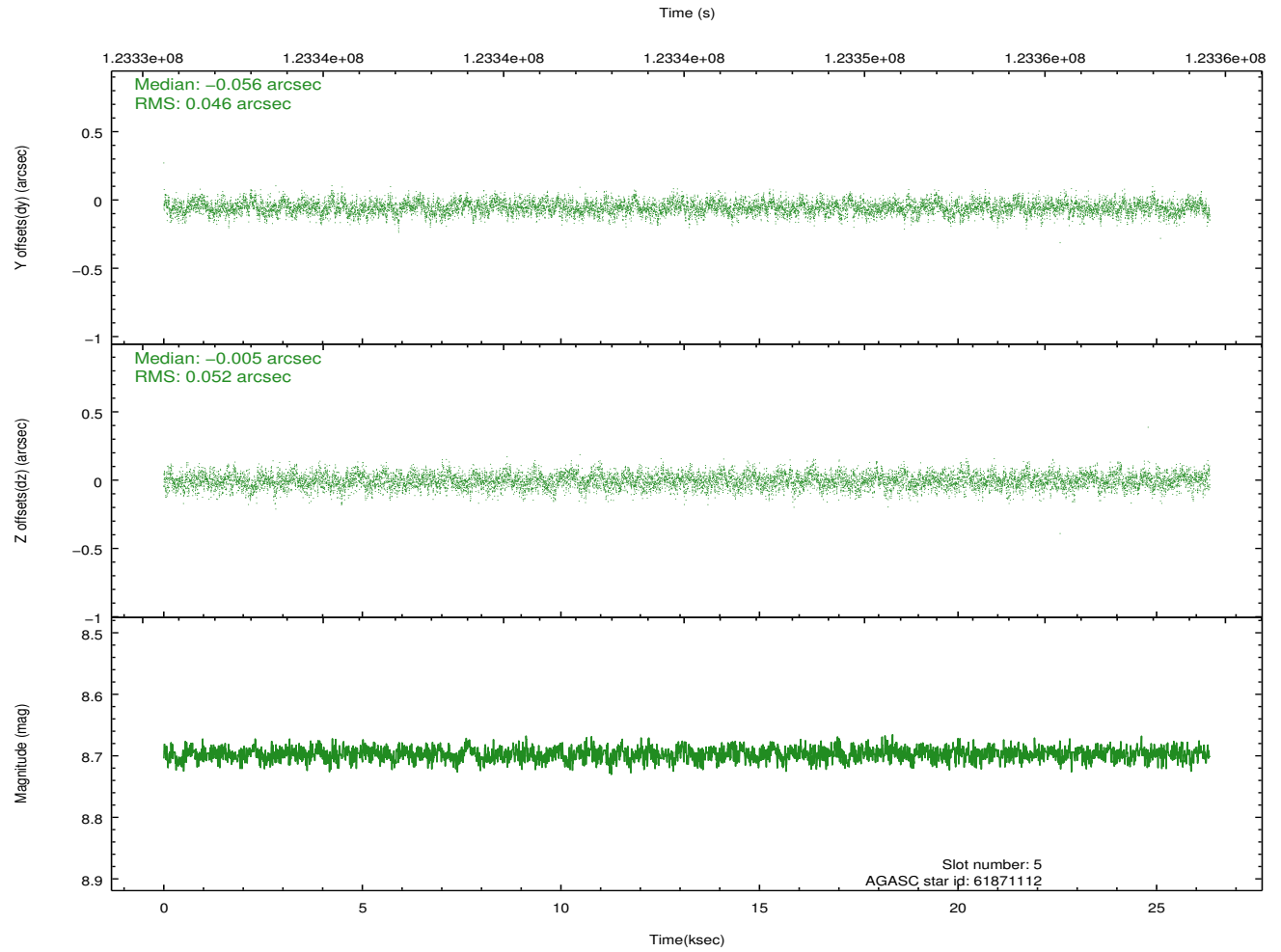
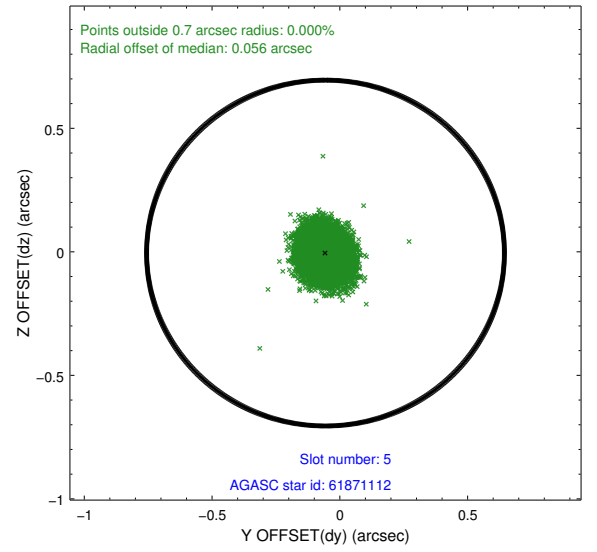
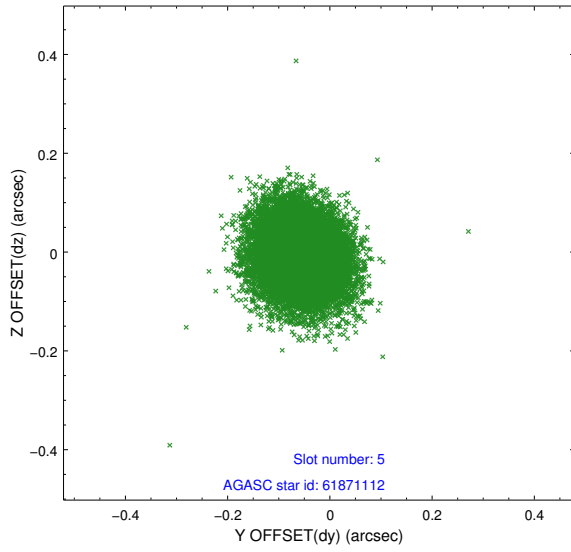


## 2.4.2 Slot 4

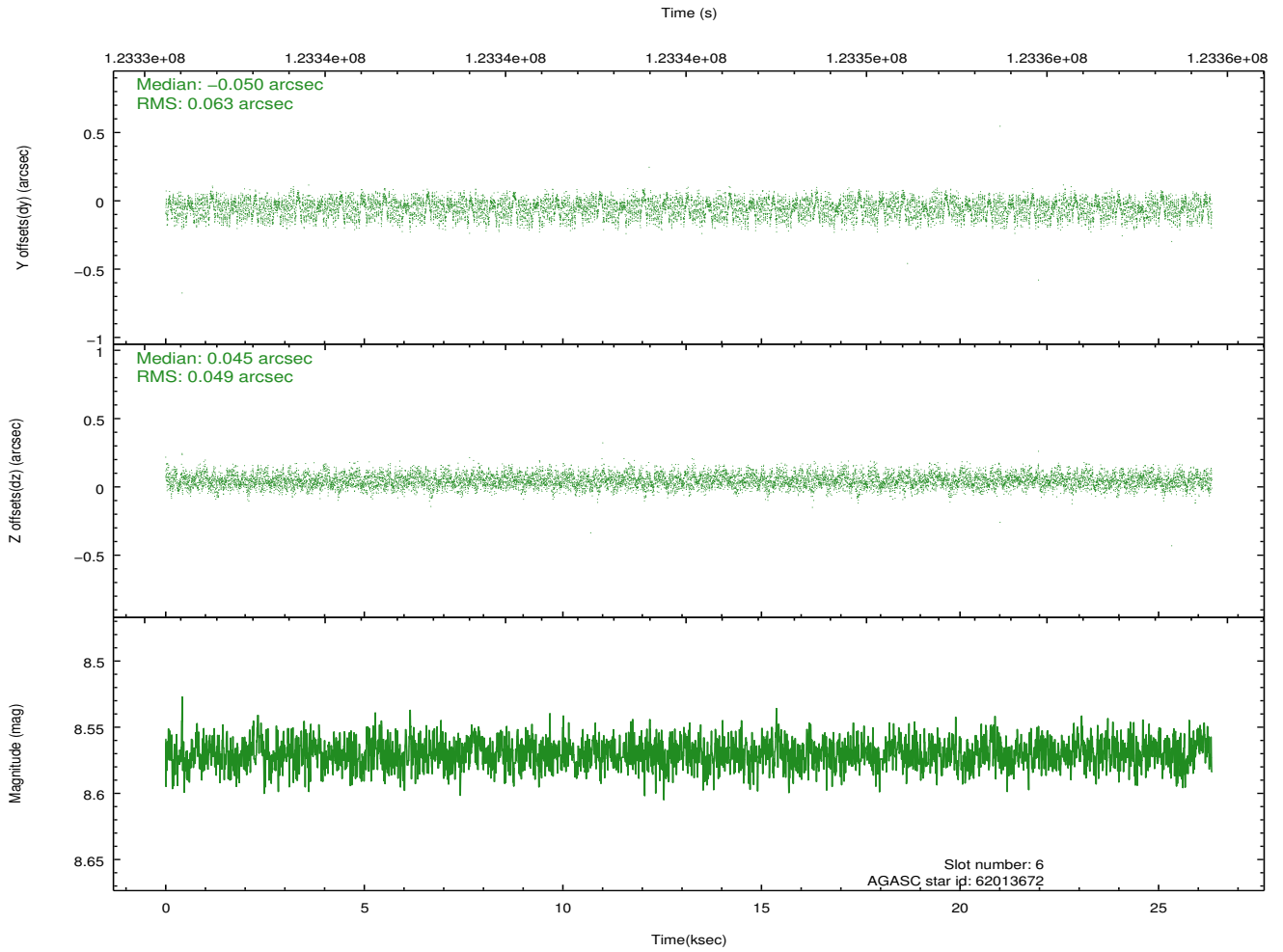
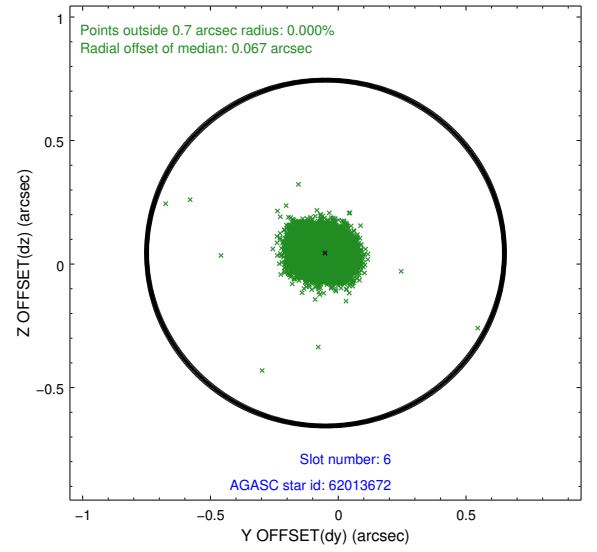
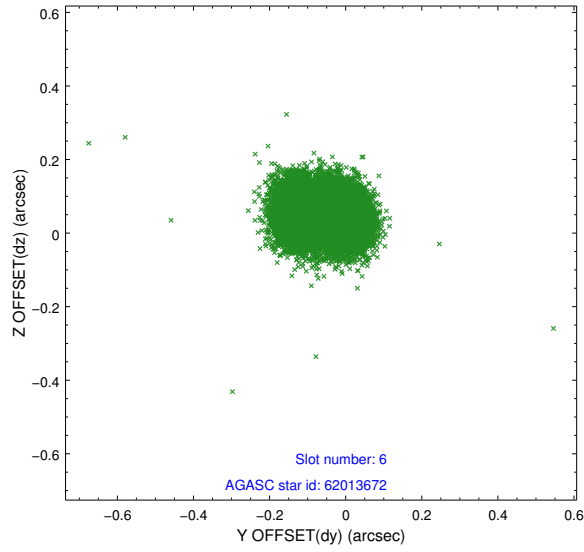




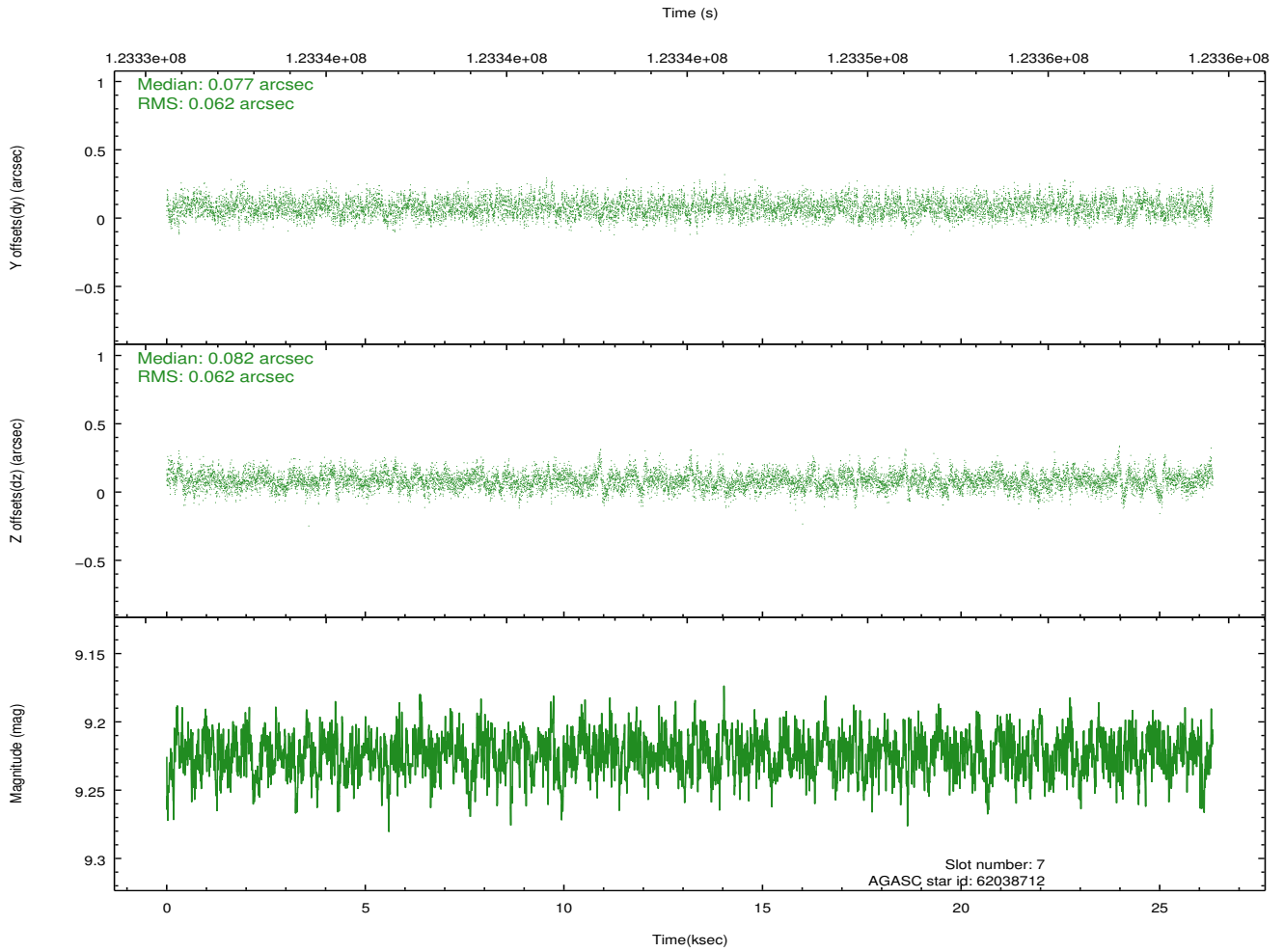
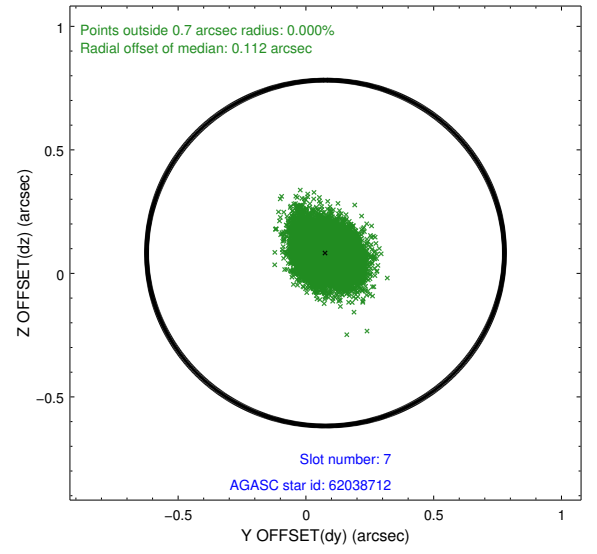
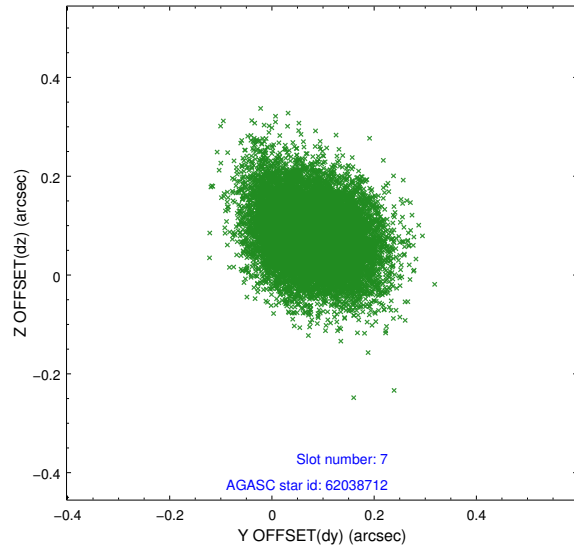
### 2.4.3 Slot 5



## 2.4.4 Slot 6

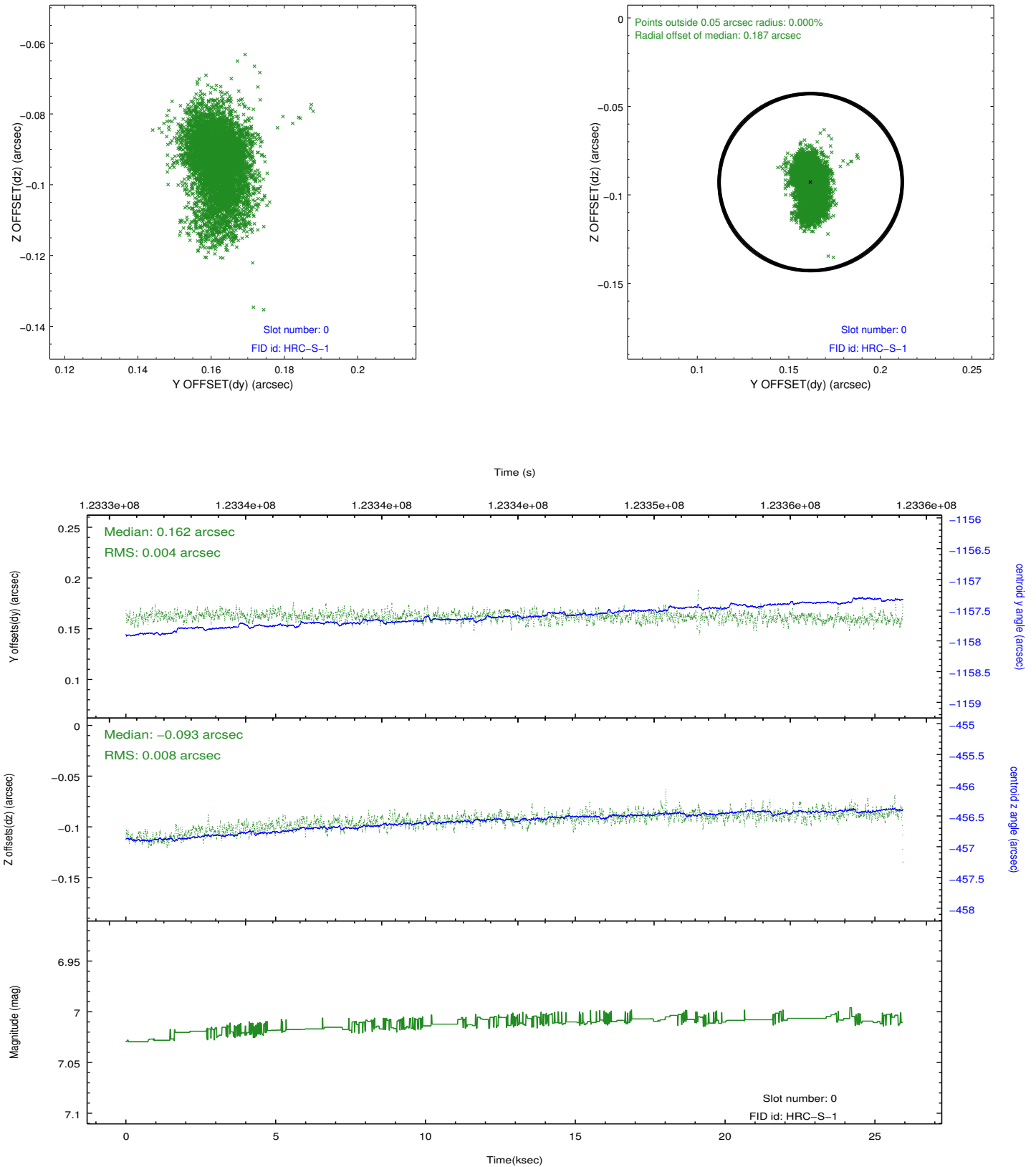


### 2.4.5 Slot 7

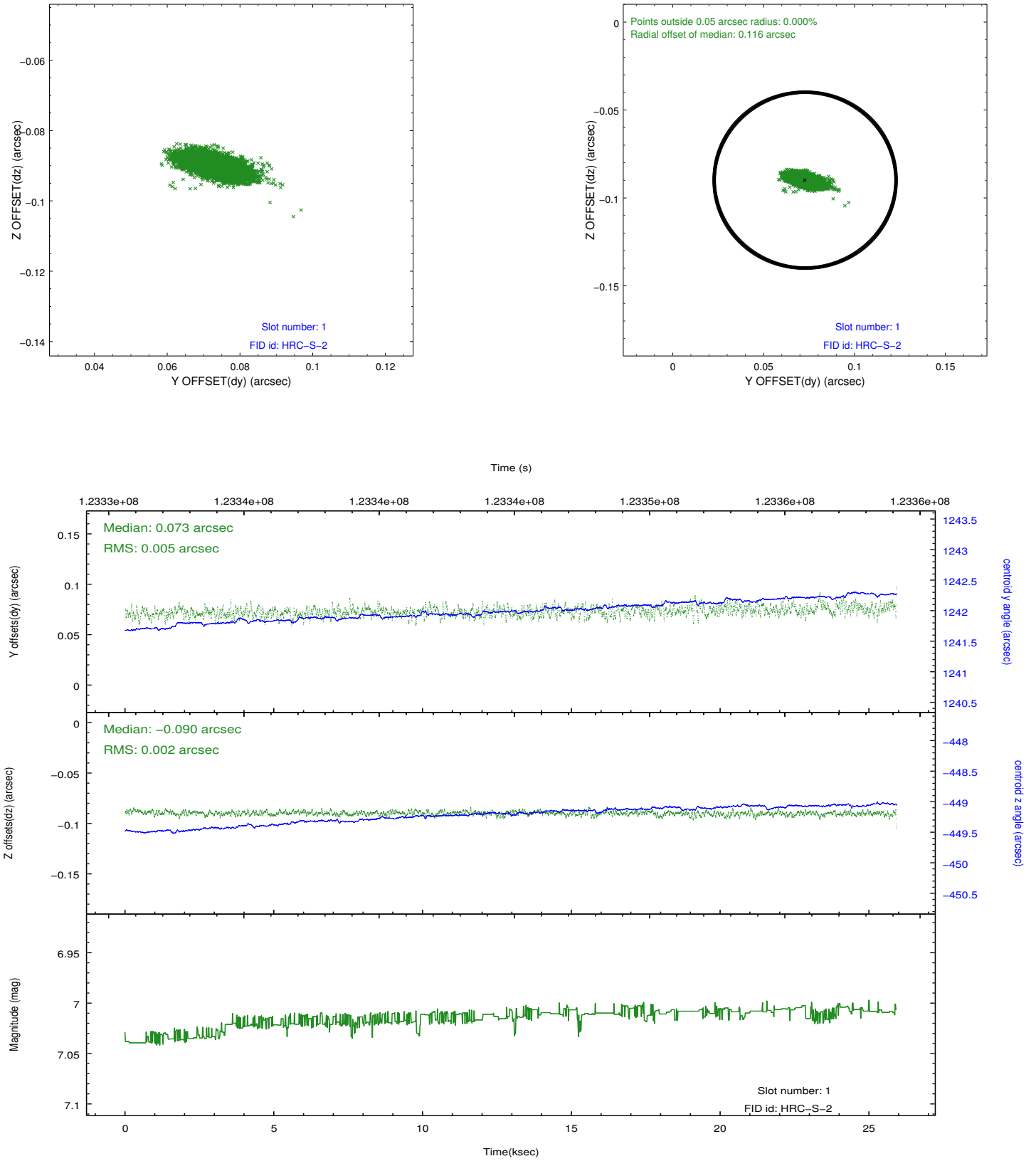


## 2.5 FID Slots

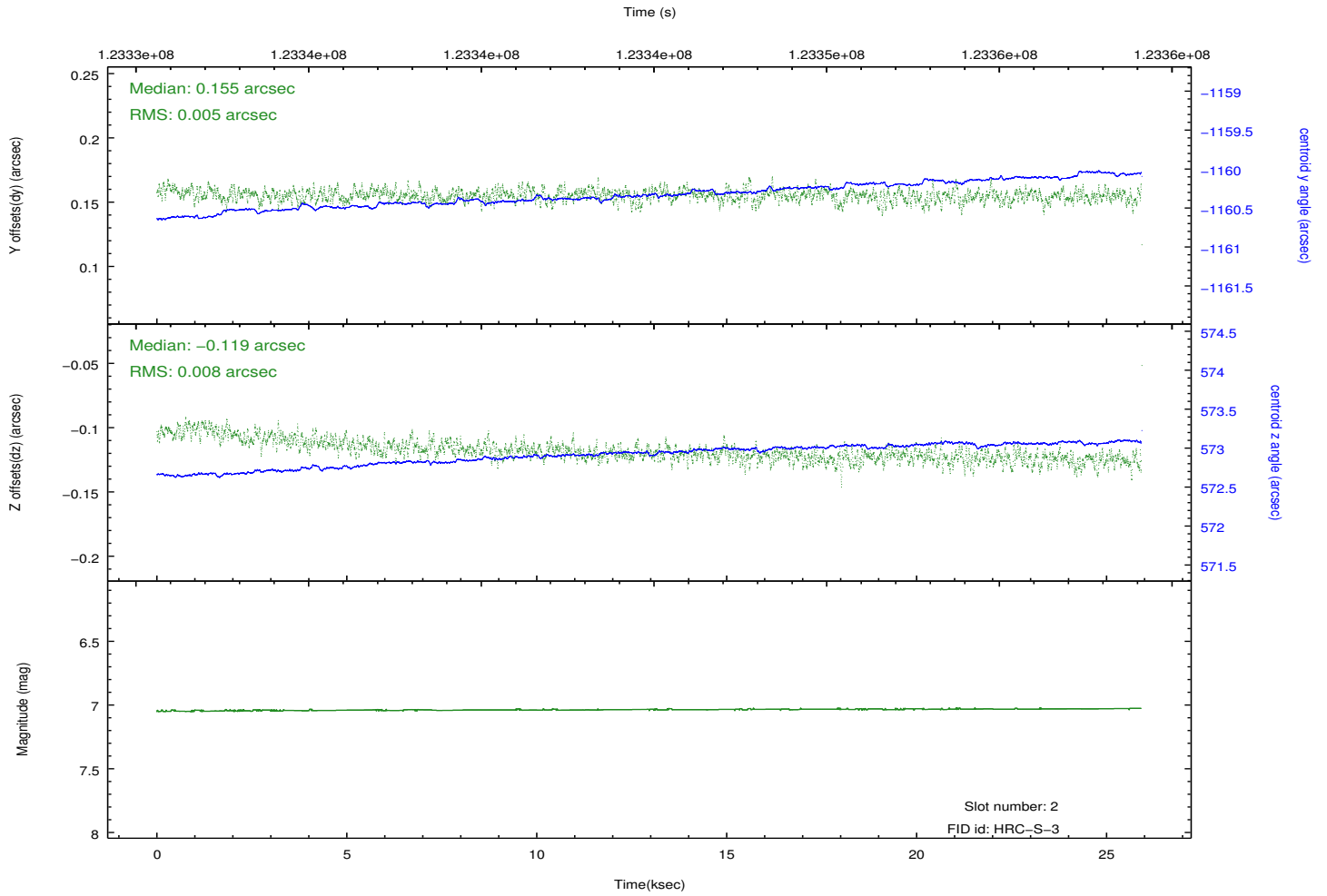
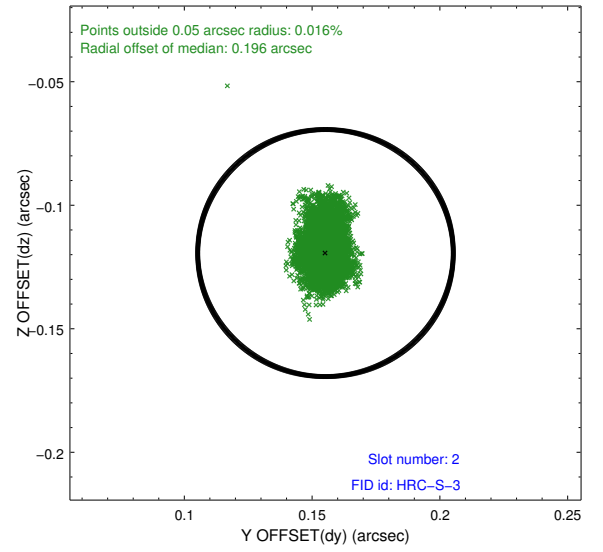
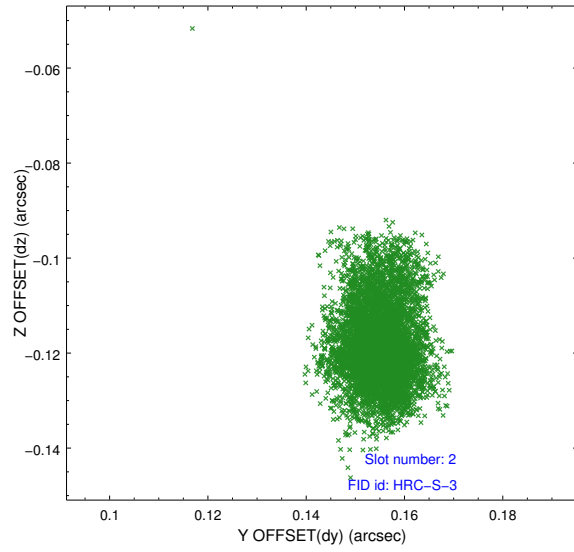
### 2.5.1 Slot 0



## 2.5.2 Slot 1

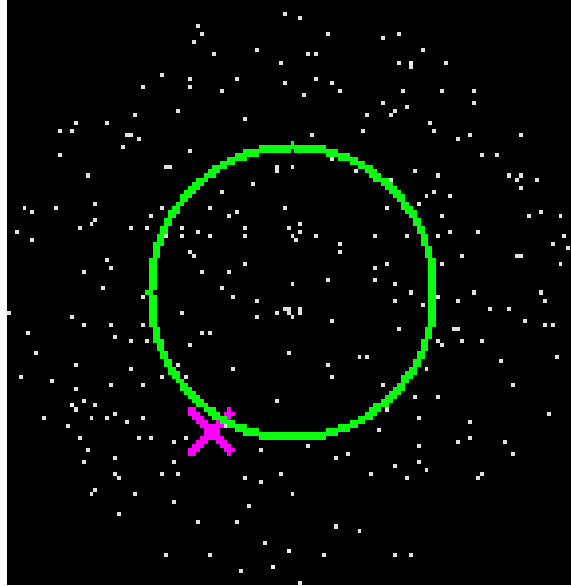


### 2.5.3 Slot 2

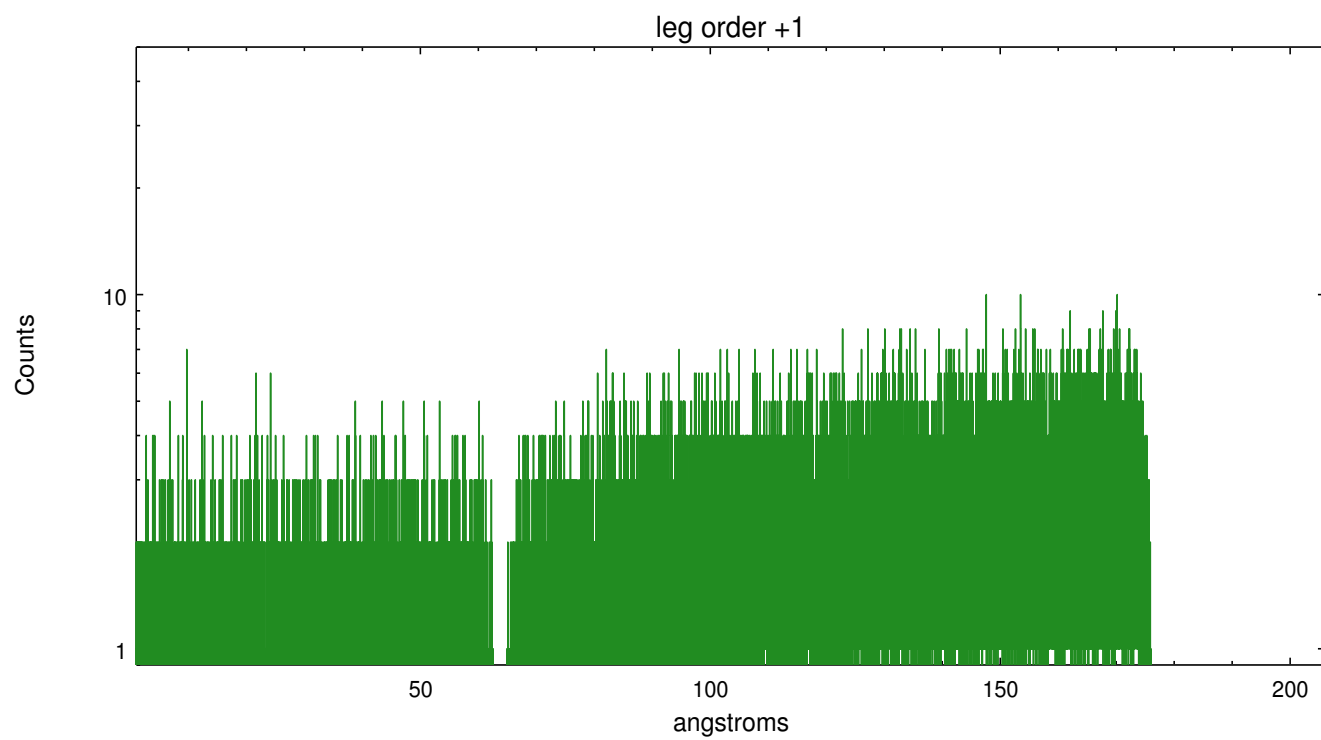
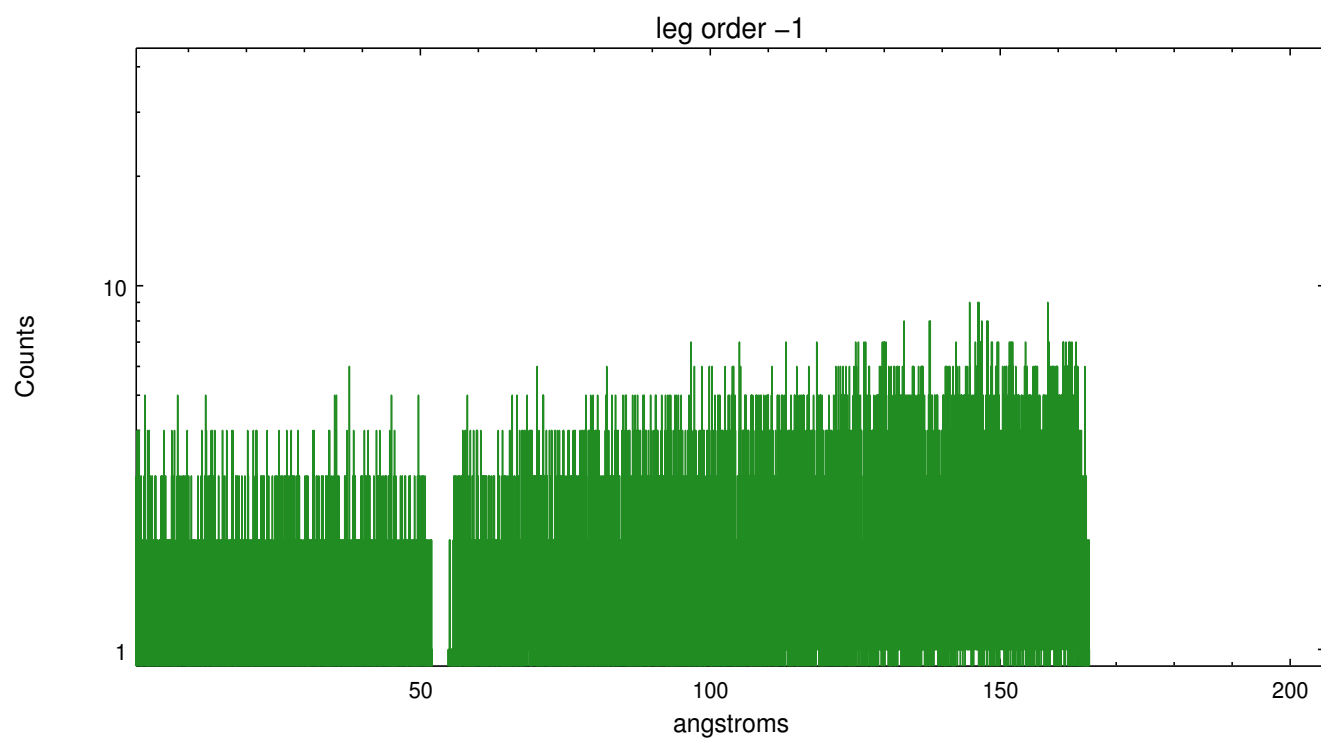


## 3 Gratings

### 3.1 LETG Arm



LETG Zero Order





# A Summary

## A.1 Status

V&V Scientist	Joy Nichols
V&V Date (YYYY-MM-DD)	2012.10.22
V&V Edition	1
V&V Disposition and Status	OK
V&V Charge Time	25.833

## A.2 Comments

Count rate is unusually high during the last half of the observation, presumably due to a high radiation environment. Standard software processing technique using the tool `tgdetect` could not locate the zeroth order. Zeroth order position for this observation defaulted to the user coordinates. Note that the user coordinates are not identical to SIMBAD coordinates for this object.