

V&V Reference Report

L2 ASCDS Version : 7.6.10

Observation 2681 - L2 Version 002
Chandra X-Ray Center

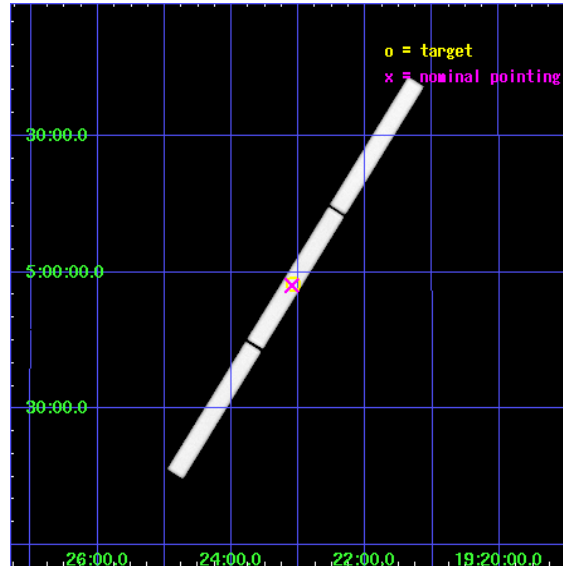
L2 Processing Date : Apr 11 2007

Contents

1	Front	2
2	OBI	3
2.1	OBI	3
2.1.1	Images	3
2.1.2	Parameters	4
2.1.3	Events	4
2.2	Compared Parameters	5
2.3	Aspect	6
2.4	Star Slots	9
2.4.1	Slot 3	9
2.4.2	Slot 4	10
2.4.3	Slot 5	11
2.4.4	Slot 6	12
2.4.5	Slot 7	13
2.5	FID Slots	14
2.5.1	Slot 0	14
2.5.2	Slot 1	15
2.5.3	Slot 2	16
3	Gratings	17
3.1	LETG Arm	17
A	Summary	19
A.1	Status	19
A.2	Comments	19

1 Front

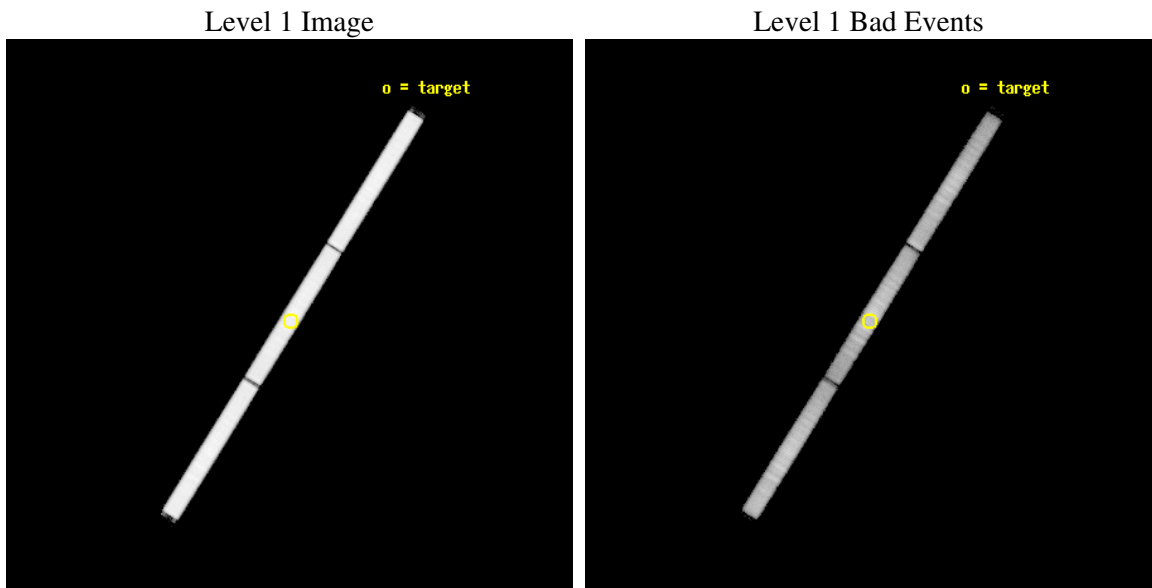
seq_num	300082
obs_id	2681
title	MULTIWAVELENGTH OBSERVATIONS OF V1494 AQL IN OUTBURST
observer	Regents Professor Sumner Starrfield
object	V1494 AQL
ra_targ	290.772083
dec_targ	4.956
ra_nom	290.7744522382
dec_nom	4.9519520297816
roll_nom	301.8858106036
revision	3
ontime	25841.532284036
livetime	25682.89741981
l2events	1244125



2 OBI

2.1 OBI

2.1.1 Images



2.1.2 Parameters

obi_num	1
ascdsver	7.6.10
caldsver	3.3.0
date	2007-01-20T10:19:21
revision	2

sched_exp_time	25274.225000
ontime	25841.532284036
l1events	1854684

2.1.3 Events

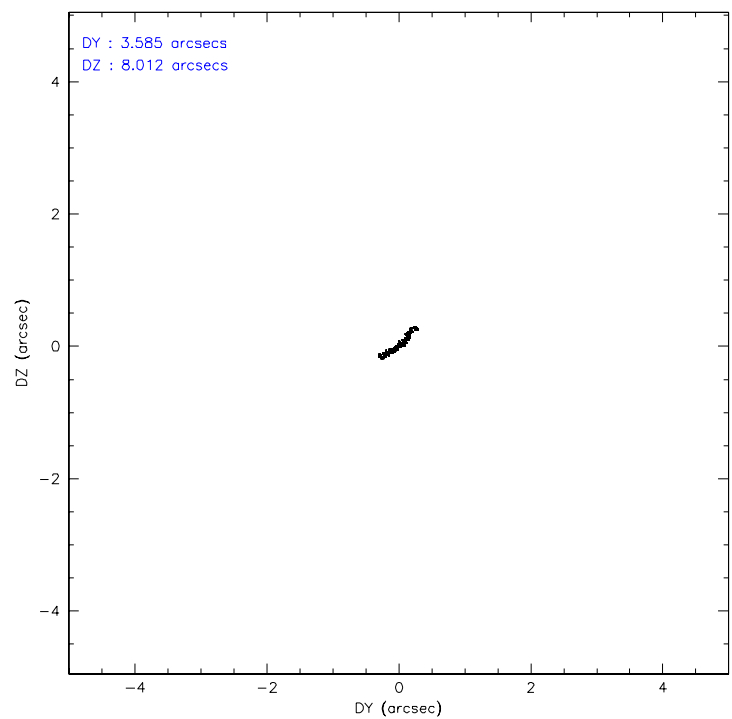
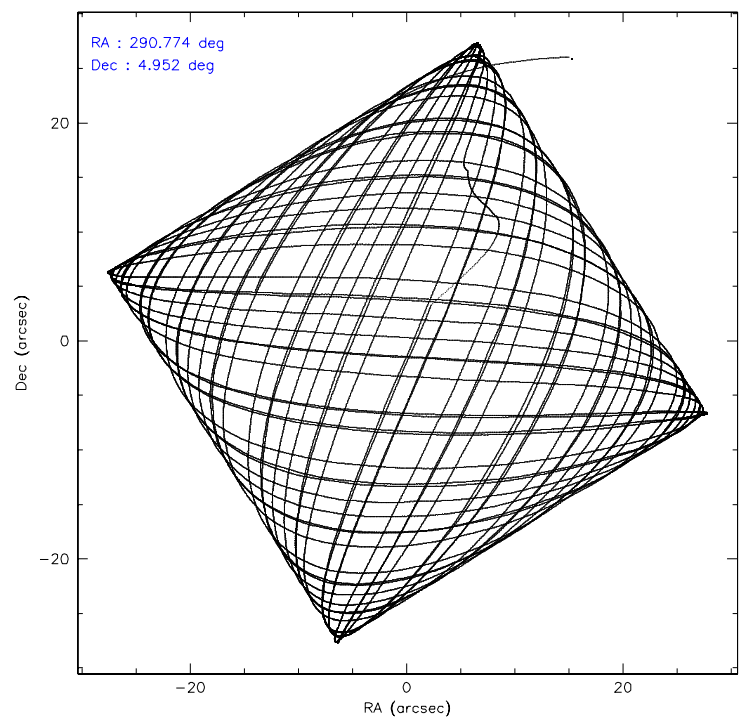
Level 1 Events

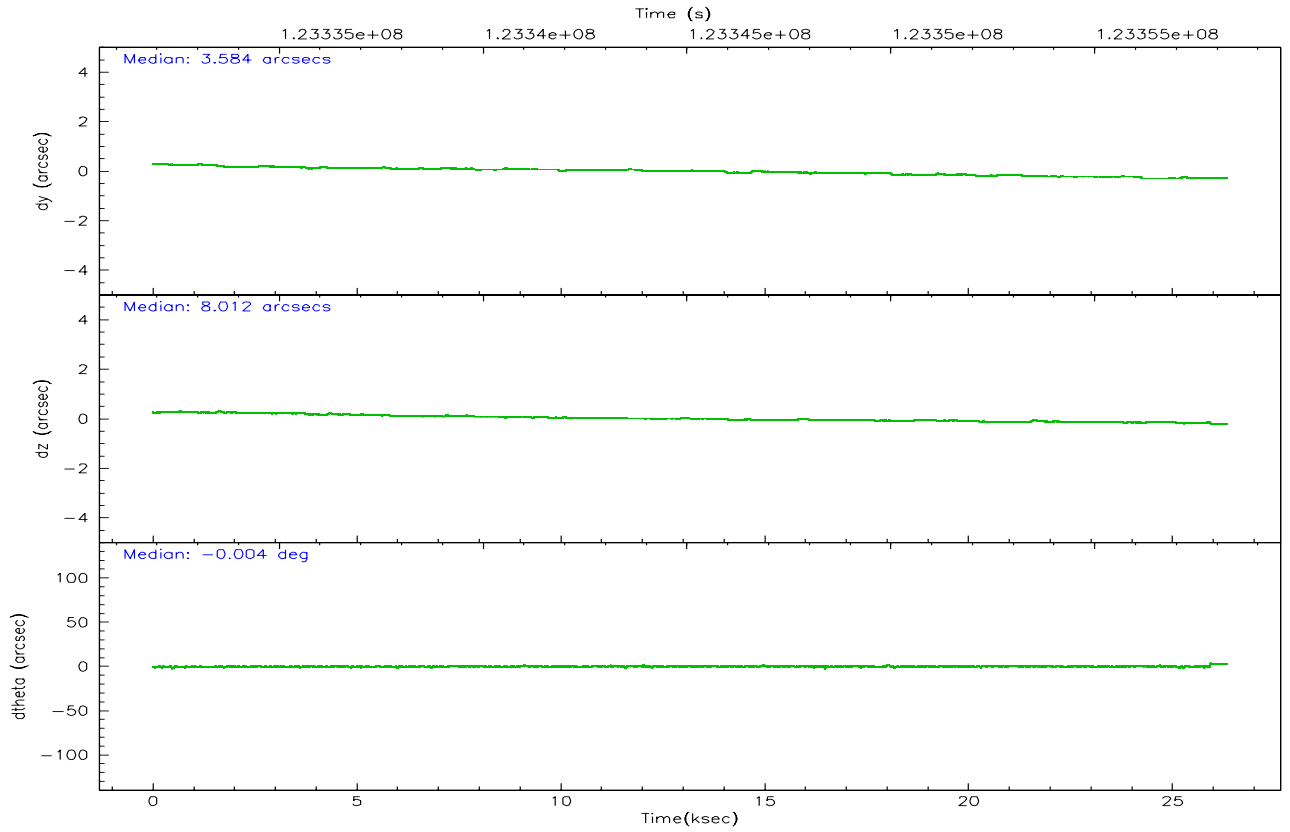
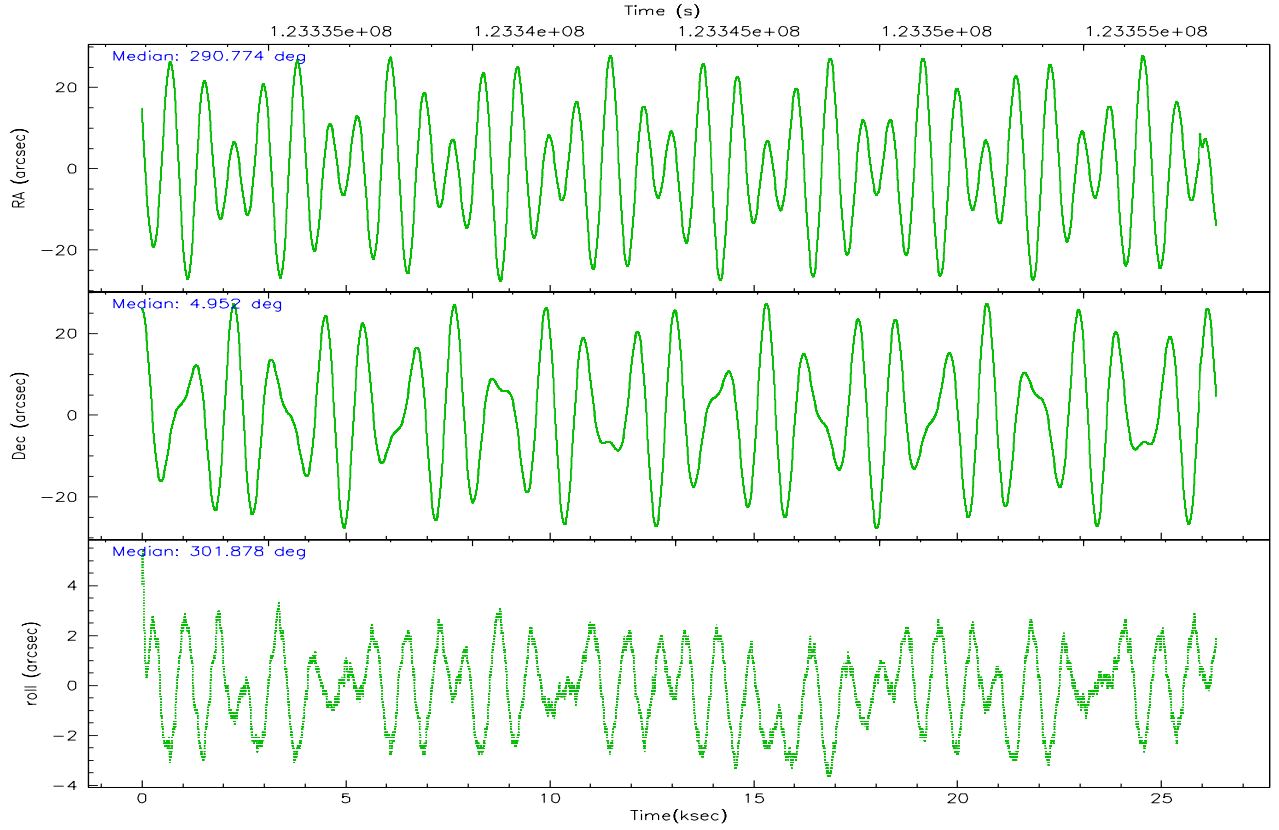
	segment 1	segment 2	segment 3
level 1 events	638175	593622	622887
rejected events	138827	146726	166348
rejected %	21%	24%	26%

2.2 Compared Parameters

Parameter	Planned	Actual	Parameter	Planned	Actual
Instrument	HRC	HRC	Obspar format version number	6	6
Detector	HRC-S	HRC-S	Obspar file type	PREDICTED	ACTUAL
Grating	LETG	LETG	Obspar update status	NONE	UPDATED
Data mode	OBSERVING	OBSERVING			
Observation mode	POINTING	POINTING			
Pointing RA	290.748486	290.7744522381965			
Pointing Dec	4.964162	4.951952029781609			
Pointing Roll	301.820718	301.8858106035952			
SIM focus pos (mm)	-1.429586	-1.428180813131781			
SIM defocus (mm)	0.1037507710433287	0.1051558262725154			
SIM translation stage pos (mm)	250.455976	250.466033080201			
SIM translation stage offset (mm)	0	-0.01005468664627074			
Observation start time	123332070.184000	123331122.44568			
Observation start date	2001-11-28T10:53:26	2001-11-28T10:38:42			
Observation end time	123357344.184000	123359074.1968			
Observation end date	2001-11-28T17:54:40	2001-11-28T18:24:34			

2.3 Aspect



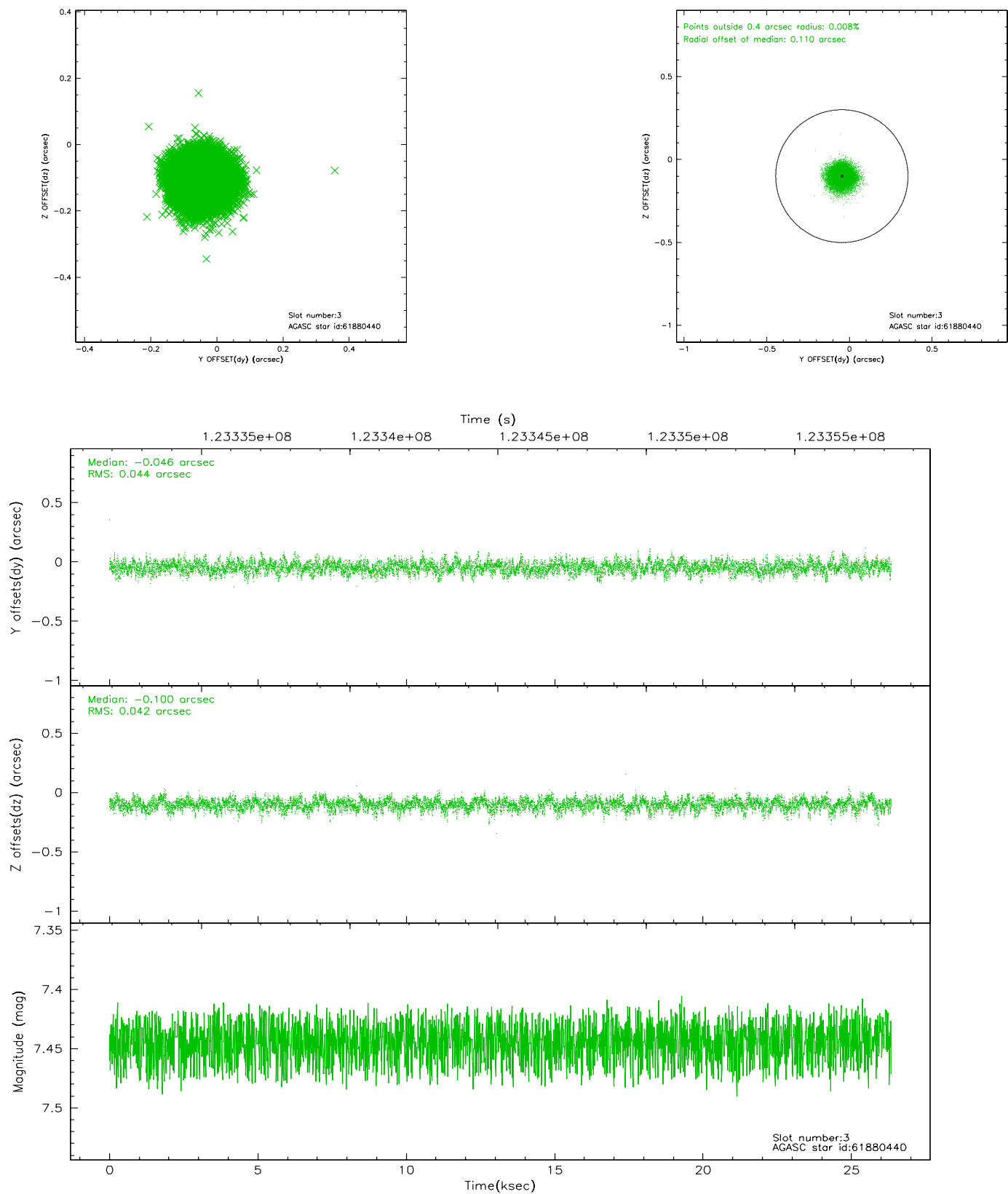


Slot Statistics

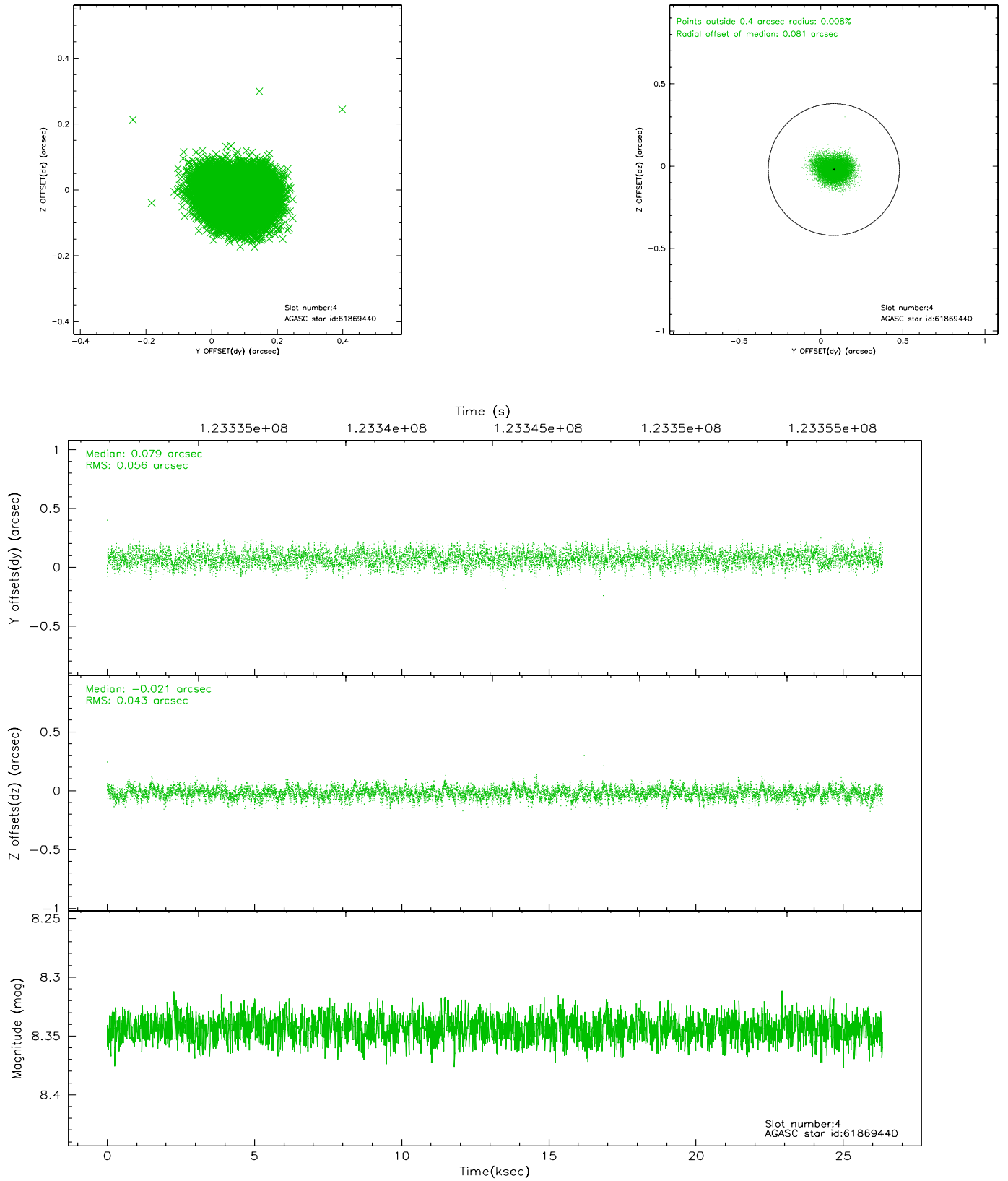
slot	status	id	mag	n_pts	med_dy	med_dz	dr1	dr2	ra	dec	mean_y	mean_z
0	FID	HRC-S-1	7.01	6326	0.162	-0.093	0.009	0.018	0.000000	0.000000	-1157.60	-456.59
1	FID	HRC-S-2	7.01	6325	0.073	-0.090	0.005	0.010	0.000000	0.000000	1241.81	-449.29
2	FID	HRC-S-3	7.04	6322	0.155	-0.119	0.009	0.018	0.000000	0.000000	-1160.13	572.84
3	GUIDE	61880440	7.44	12842	-0.046	-0.100	0.064	0.104	290.081203	4.777895	-691.72	-2387.13
4	GUIDE	61869440	8.34	12847	0.079	-0.021	0.076	0.122	290.487023	4.224981	1767.67	-2200.40
5	GUIDE	61871112	8.70	12841	-0.056	-0.005	0.074	0.119	290.340849	5.123147	-1255.86	-940.08
6	GUIDE	62013672	8.57	12842	-0.050	0.045	0.086	0.133	291.398358	5.180057	567.95	2390.50
7	GUIDE	62038712	9.22	12843	0.077	0.082	0.093	0.152	291.151100	5.399635	-570.53	2053.38

2.4 Star Slots

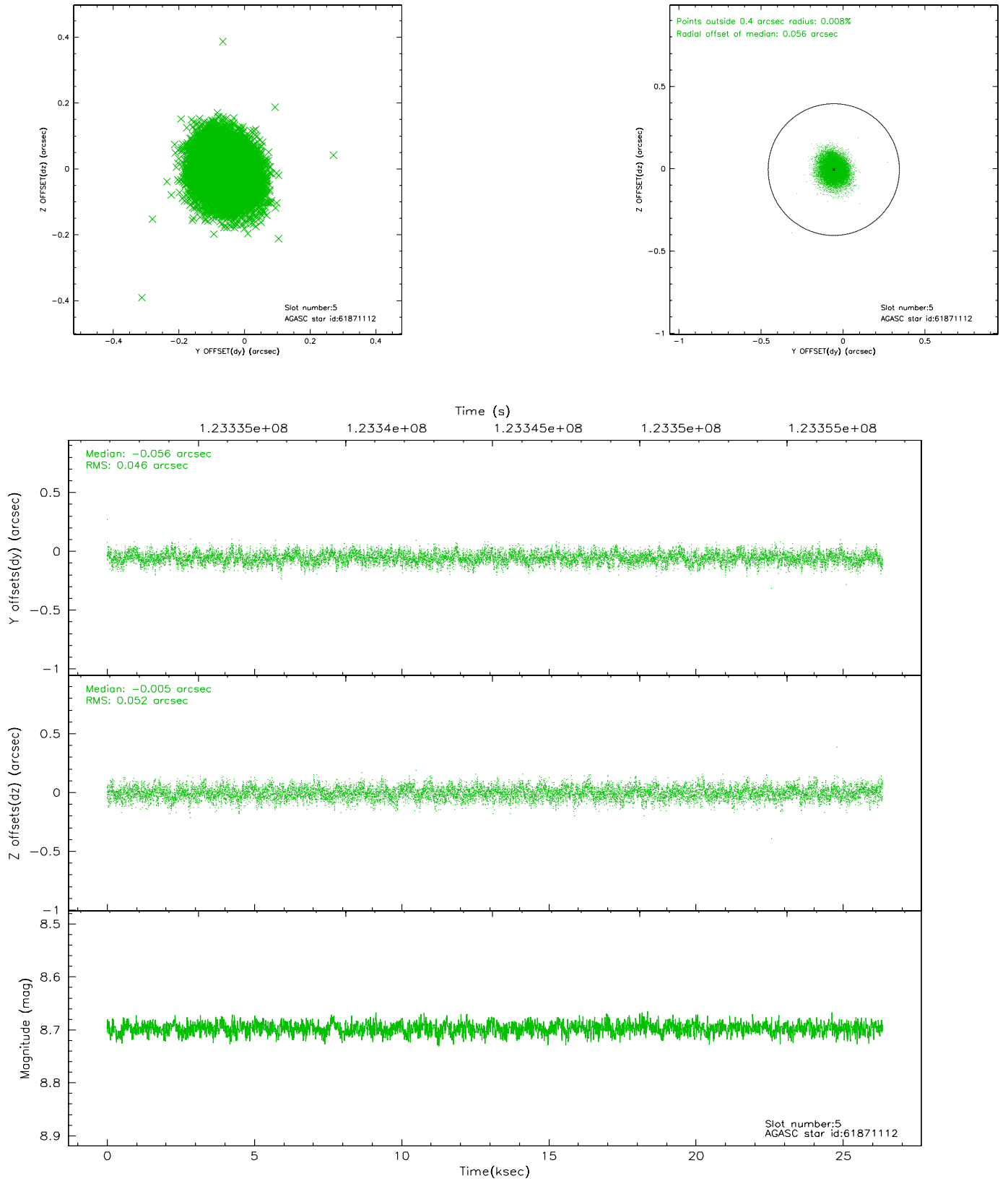
2.4.1 Slot 3



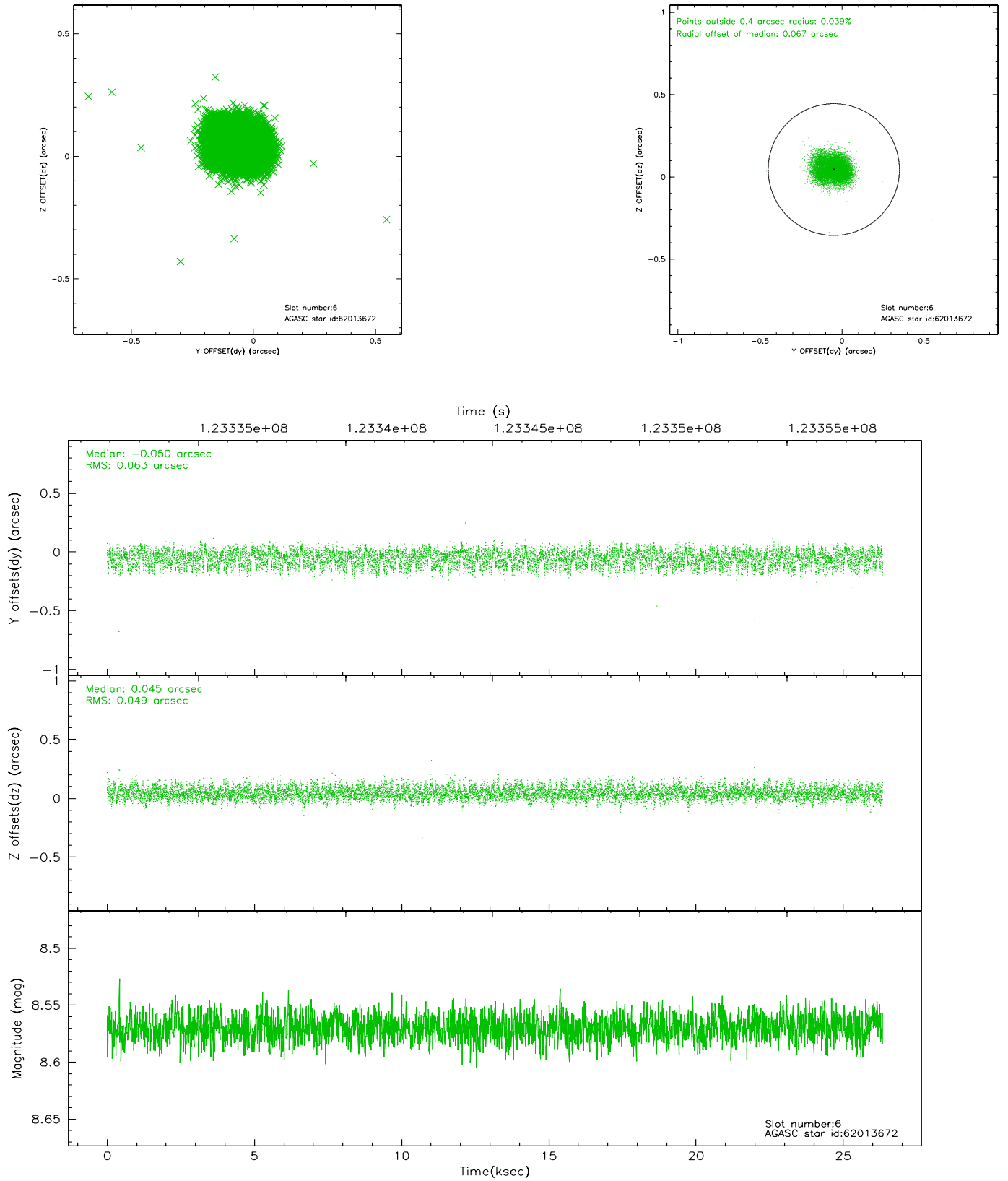
2.4.2 Slot 4



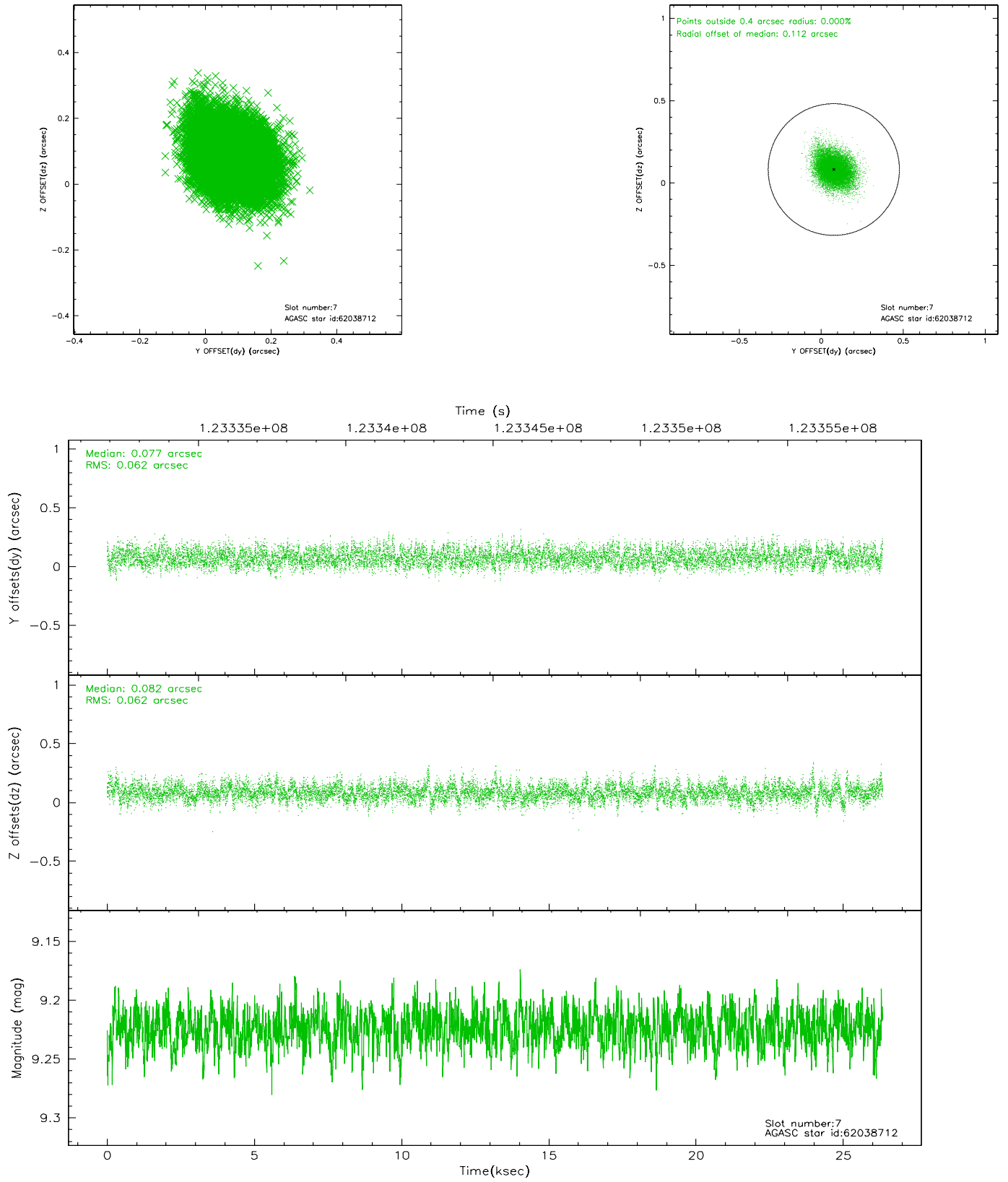
2.4.3 Slot 5



2.4.4 Slot 6

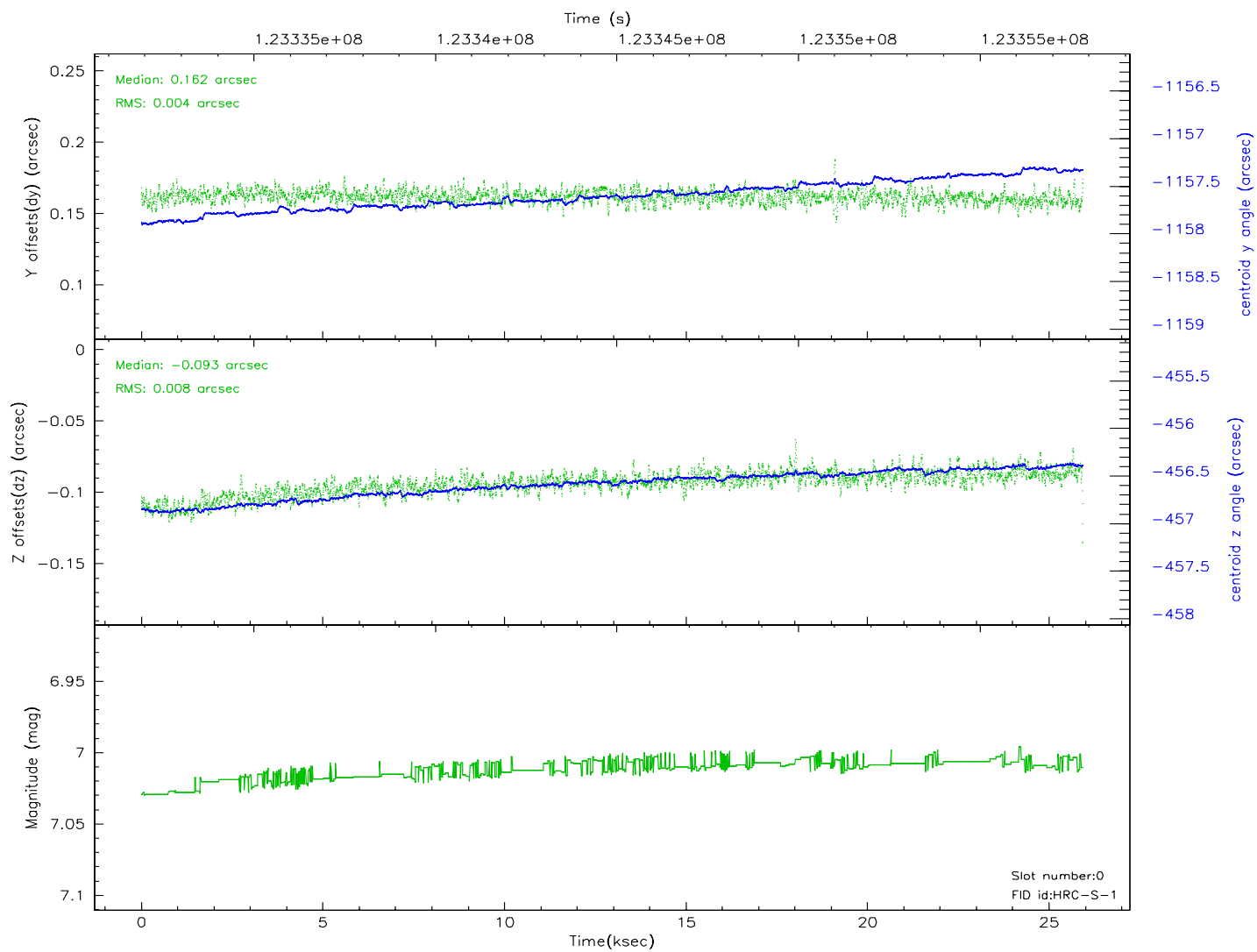
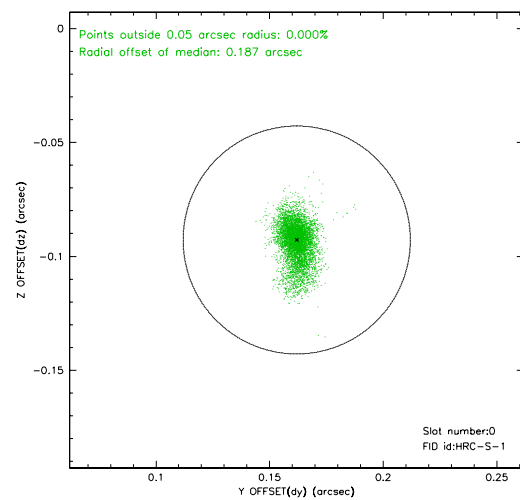
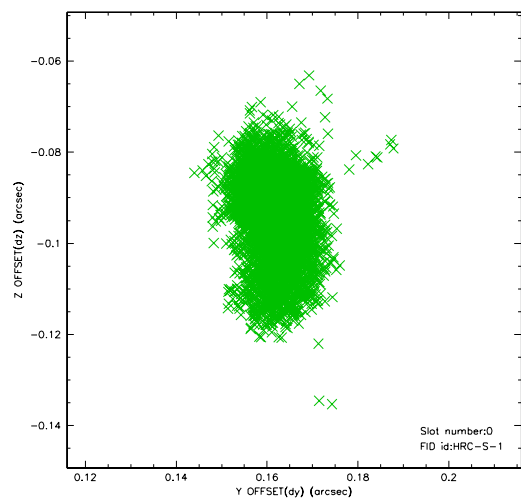


2.4.5 Slot 7

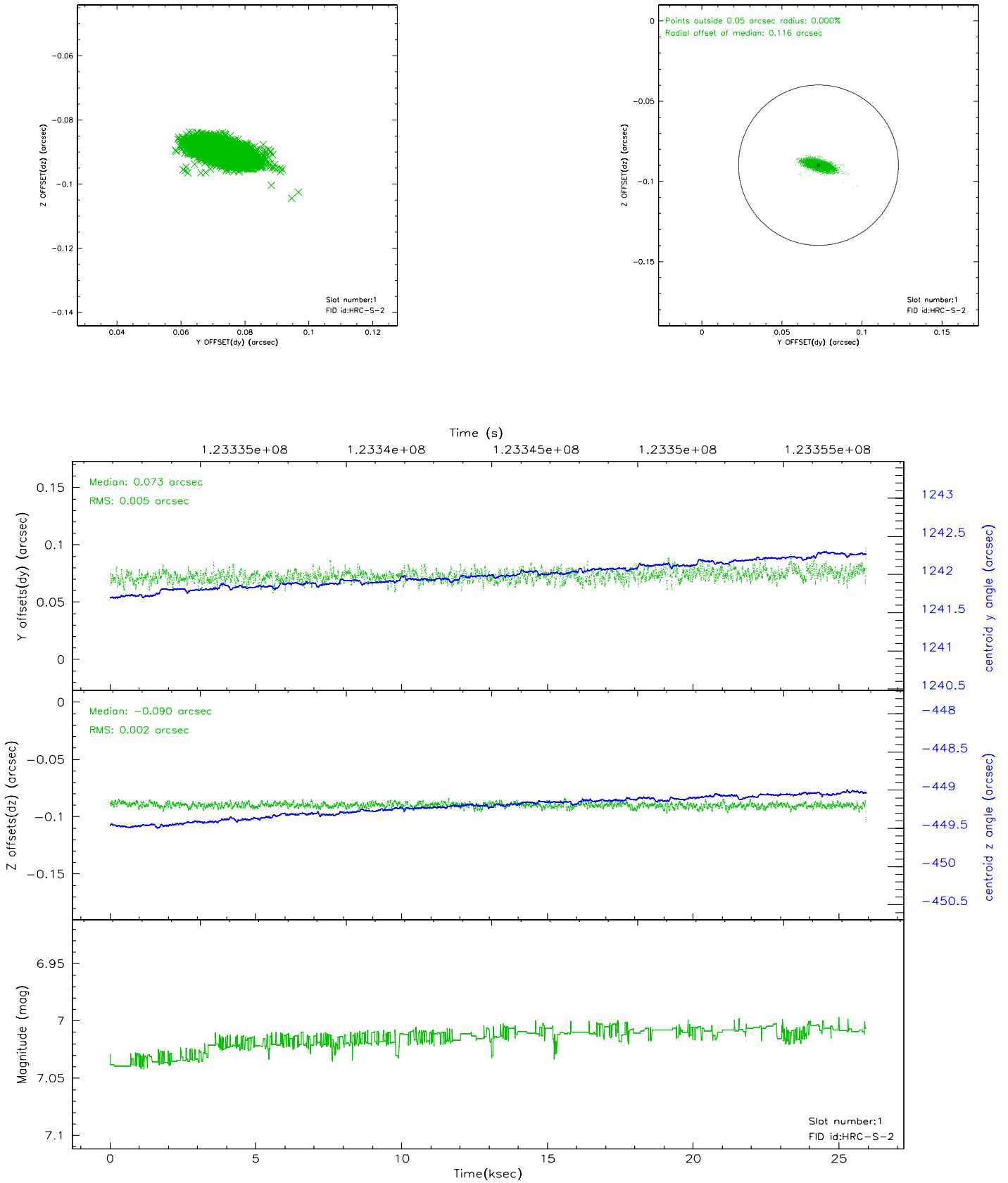


2.5 FID Slots

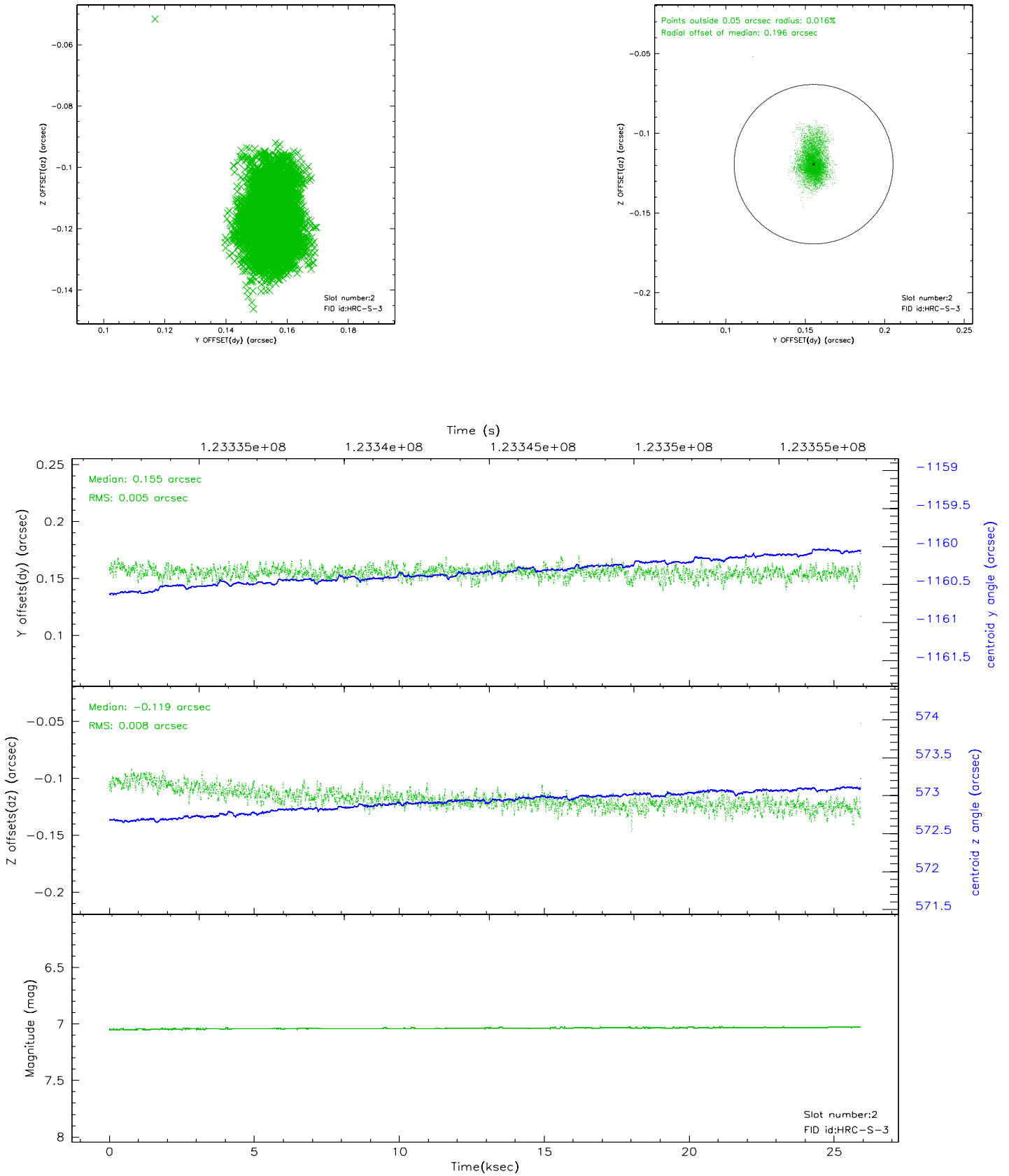
2.5.1 Slot 0



2.5.2 Slot 1

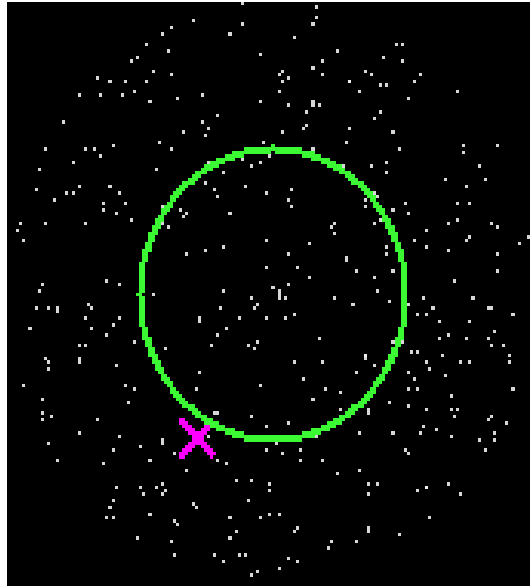


2.5.3 Slot 2

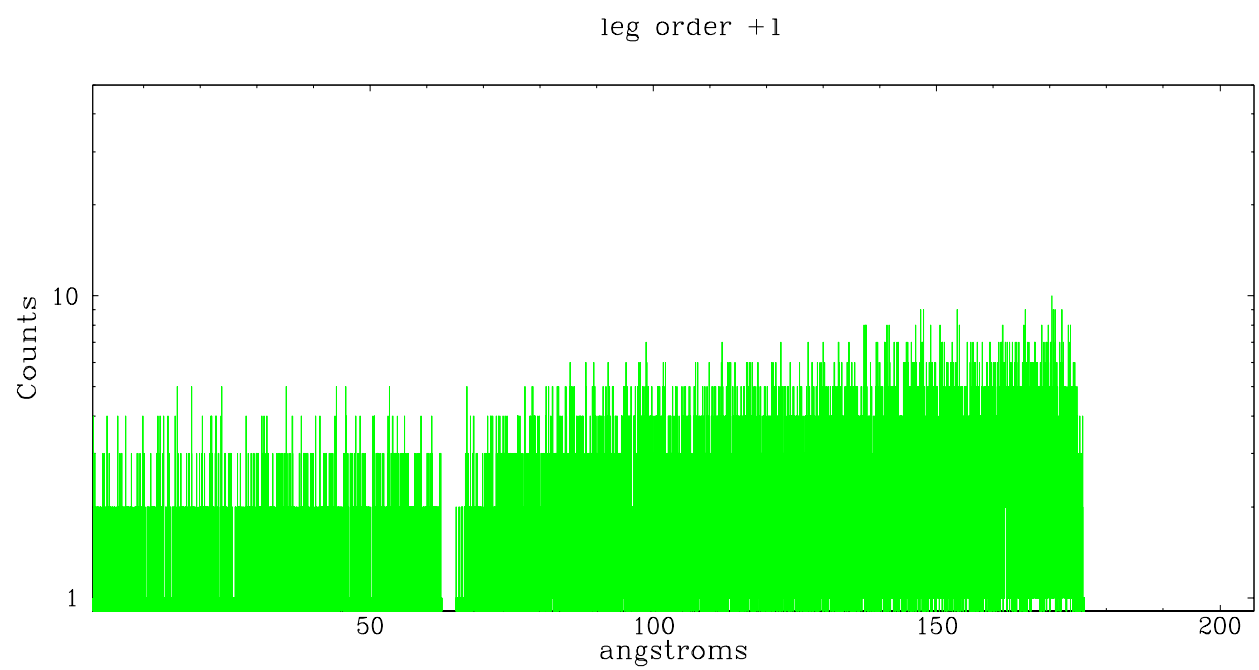
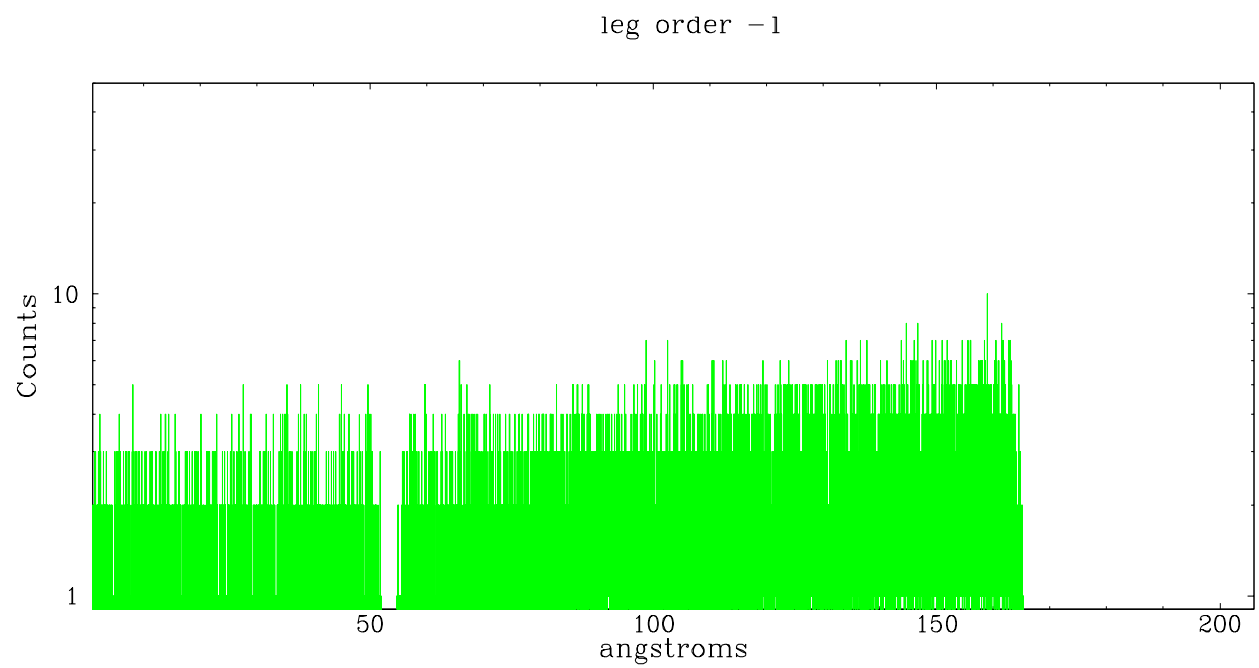


3 Gratings

3.1 LETG Arm



LETG Zero Order



A Summary

A.1 Status

V&V Scientist	Joy Nichols
V&V Date (YYYY-MM-DD)	2007.04.12
V&V Edition	1
V&V Disposition and Status	OK
V&V Charge Time	25.833

A.2 Comments

Count rate is unusually high during the last half of the observation, presumably due to a high radiation environment.

Standard software processing technique using the tool `tgdetect` could not locate the zeroth order. Zeroth order position for this observation has been determined using the known angle between the readout streak and the meg spectral arm. The newly determined zeroth order coordinates were manually entered for the tool `tg_create_mask`.