

V&V Reference Report

L2 ASCDS Version : 7.6.9

Observation 2677 - L2 Version 001
Chandra X-Ray Center

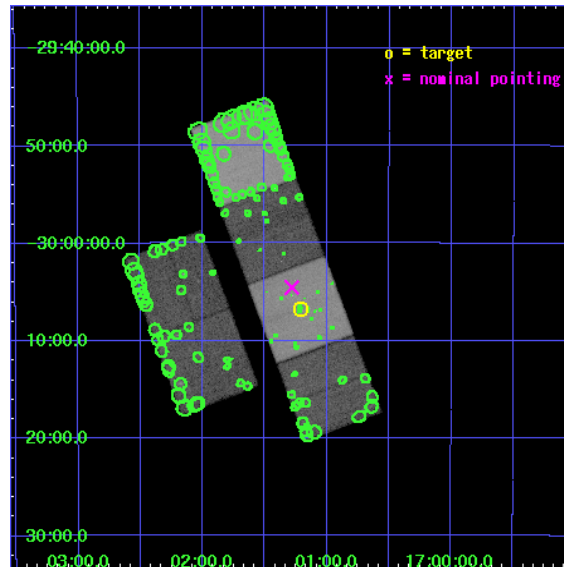
L2 Processing Date : Sep 16 2006

Contents

1	Front	2
2	OBI	3
2.1	OBI	3
2.1.1	Images	3
2.1.2	Bias	3
2.1.3	Parameters	4
2.1.4	Events	4
2.2	Compared Parameters	5
2.3	Aspect	6
2.4	Star Slots	9
2.4.1	Slot 3	9
2.4.2	Slot 4	10
2.4.3	Slot 5	11
2.4.4	Slot 6	12
2.4.5	Slot 7	13
2.5	FID Slots	14
2.5.1	Slot 0	14
2.5.2	Slot 1	15
2.5.3	Slot 2	16
3	Point Sources	17
A	Summary	18
A.1	Status	18
A.2	Comments	18

1 Front

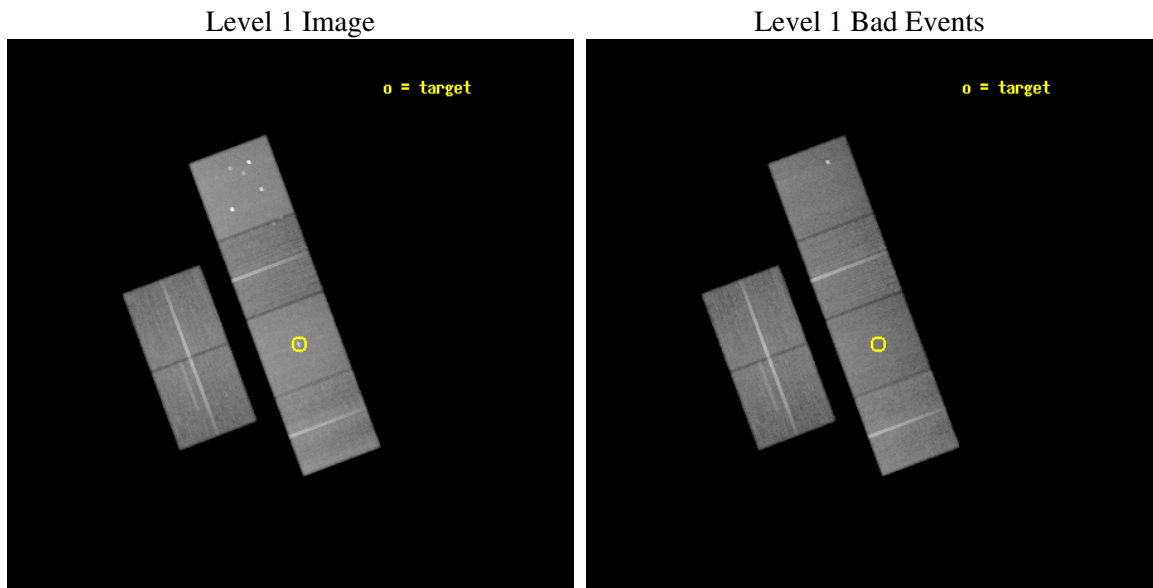
seq_num	300078
obs_id	2677
title	A UNIFORM STUDY OF GLOBULAR CLUSTER X--RAY SOURCES: THE KEYS TO CLUSTER DYNAMICAL EVOLUTION
observer	Prof. Walter Lewin
object	NGC 6266
dtcycle	0
cycle	P
ra_targ	255.3025
dec_targ	-30.112361
ra_nom	255.32043925724
dec_nom	-30.075903457948
roll_nom	69.541174508801
revision	2
ontime	63064.779681832
livetime	62266.215468449
ontime2	63064.779681832
ontime3	63064.779681832
ontime5	63064.779681832
ontime6	63064.779681832
ontime7	63064.779681832
ontime8	63064.779681832
l2events	634034



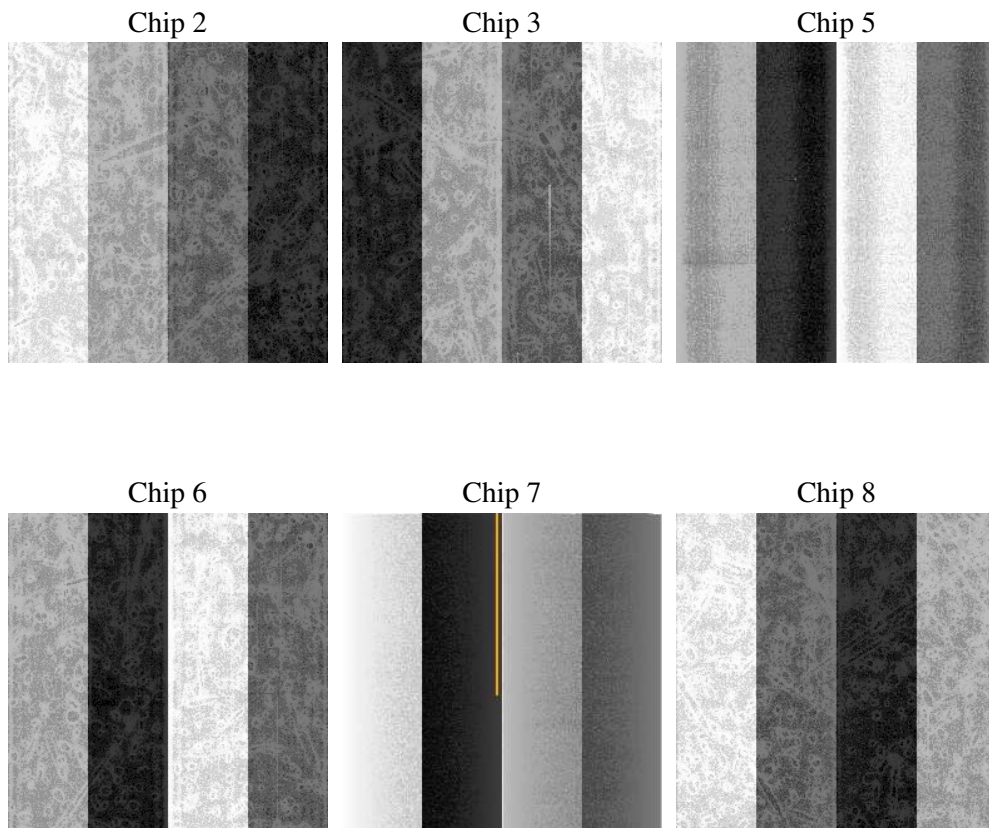
2 OBI

2.1 OBI

2.1.1 Images



2.1.2 Bias



2.1.3 Parameters

obi_num	0
ascdsver	7.6.9
caldsver	3.2.3
date	2006-09-16T12:11:46
revision	2

sched_exp_time	63000.000000
ontime	63076.472972065
ontime2	63076.472952157
ontime3	63076.472972065
ontime5	63076.472972065
ontime6	63076.472972065
ontime7	63076.472972065
ontime8	63076.472952157
l1events	2841866

2.1.4 Events

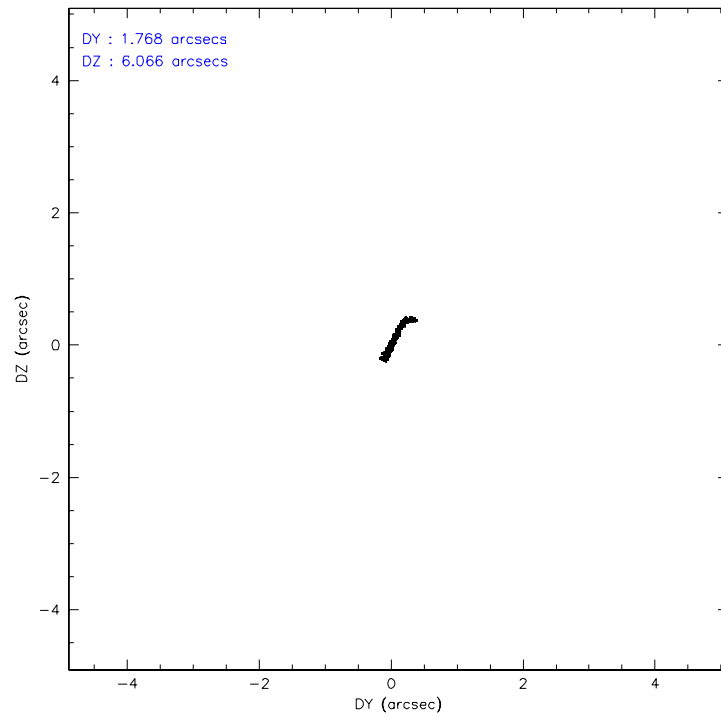
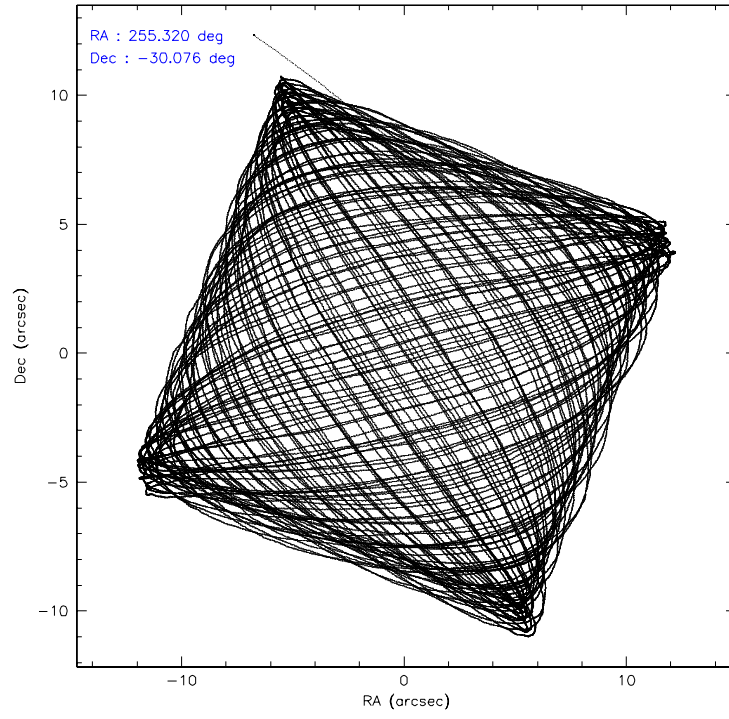
	ccd 2	ccd 3	ccd 5	ccd 6	ccd 7	ccd 8
level 1 events	406255	383838	604155	406377	536401	504840
rejected events	357358	335115	319793	354029	322304	398146
rejected %	87%	87%	52%	87%	60%	78%

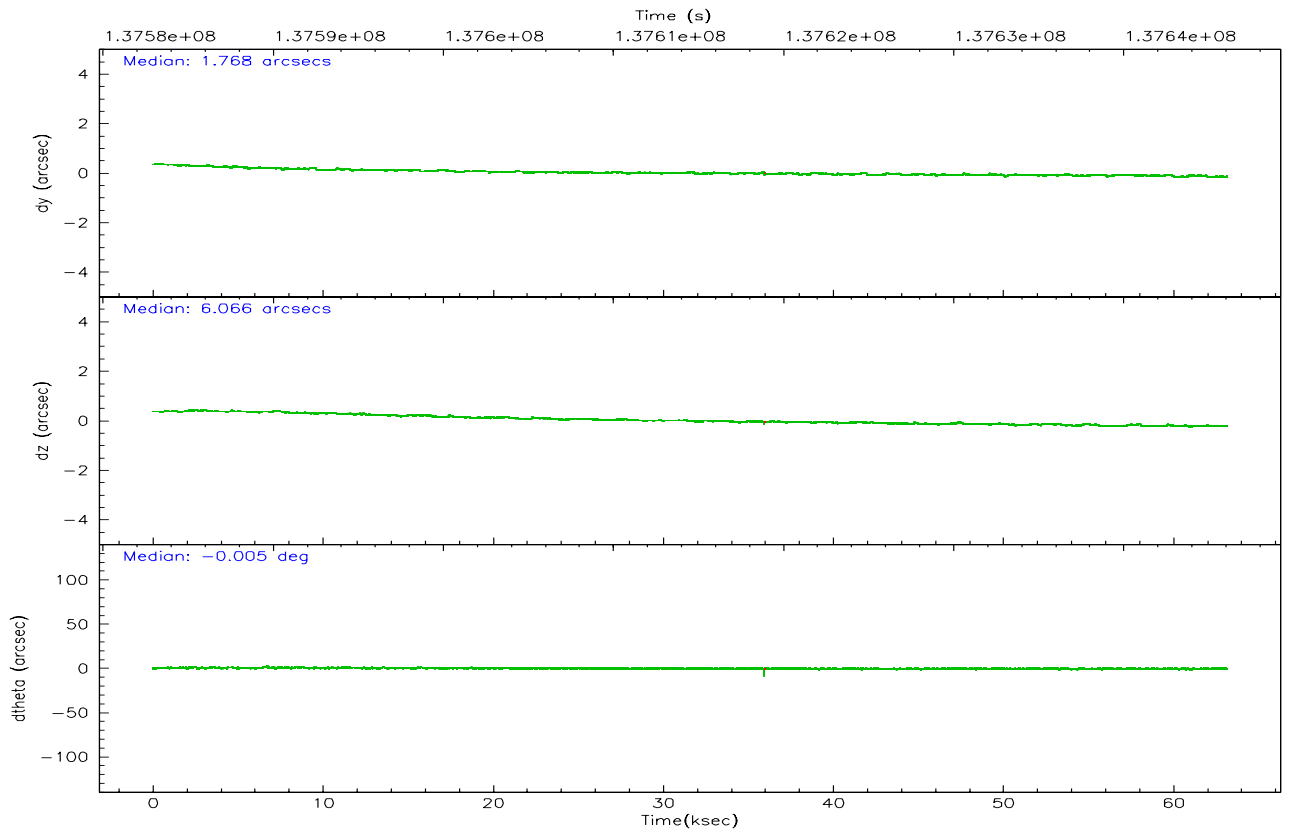
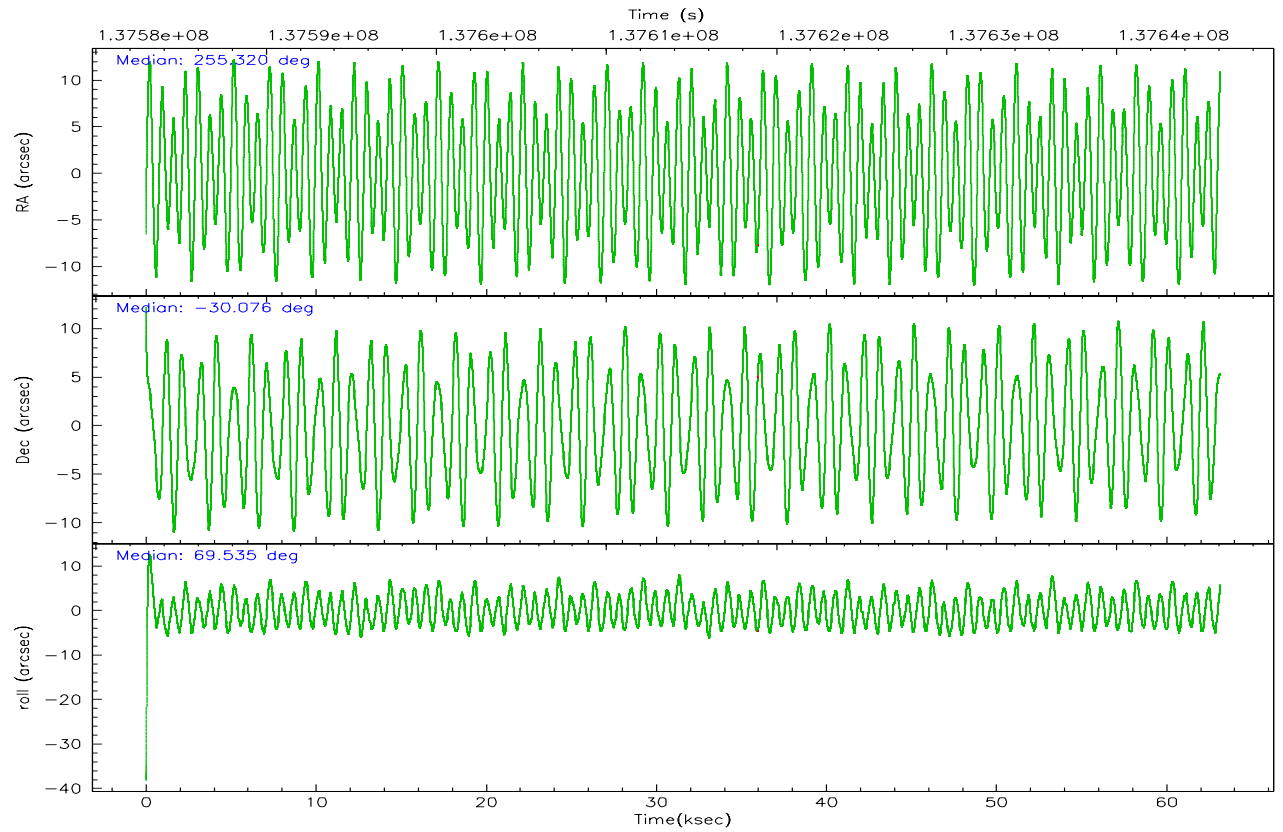
	ccd 2	ccd 3	ccd 5	ccd 6	ccd 7	ccd 8
grade 0 events	22137	22622	47046	24133	16653	35744
	5%	5%	7%	5%	3%	7%
grade 1 events	176	186	4295	194	336	294
	0%	0%	0%	0%	0%	0%
grade 2 events	10179	9302	82275	9847	53744	22777
	2%	2%	13%	2%	10%	4%
grade 3 events	4248	4388	6648	4611	12099	10946
	1%	1%	1%	1%	2%	2%
grade 4 events	4235	4308	6584	4519	12064	10216
	1%	1%	1%	1%	2%	2%
grade 5 events	14233	15757	27462	17361	35325	22302
	3%	4%	4%	4%	6%	4%
grade 6 events	8103	8110	141845	9251	119575	27019
	1%	2%	23%	2%	22%	5%
grade 7 events	342944	319165	288000	336461	286605	375542
	84%	83%	47%	82%	53%	74%

2.2 Compared Parameters

Parameter	Planned	Actual	Parameter	Planned	Actual
Instrument	ACIS	ACIS	Obspar format version number	6	6
Detector	ACIS-235678	ACIS-235678	Obspar file type	PREDICTED	ACTUAL
Grating	NONE	NONE	Obspar update status	NONE	UPDATED
Data mode	FAINT	FAINT	Number of optional ACIS chips dropped	0	0
Observation mode	POINTING	POINTING	On-chip summing requested	N	N
Pointing RA	255.326044	255.3204392572423	Subarray requested	NONE	NONE
Pointing Dec	-30.102719	-30.07590345794751	Alternating exposures requested	N	N
Pointing Roll	69.387365	69.5411745088013	Primary exposure time	0.000000	3.2
SIM focus pos (mm)	-0.684267	-0.6828225247311905			
SIM defocus (mm)	0	0.001444936568705701			
SIM translation stage pos (mm)	-190.132523	-190.1400660498719			
SIM translation stage offset (mm)	0	0.00754346686406393			
Observation start time	137583075.184000	137582026.53374			
Observation start date	2002-05-12T09:30:11	2002-05-12T09:13:46			
Observation end time	137646075.184000	137646441.12387			
Observation end date	2002-05-13T03:00:11	2002-05-13T03:07:21			
Read mode	TIMED	TIMED			

2.3 Aspect



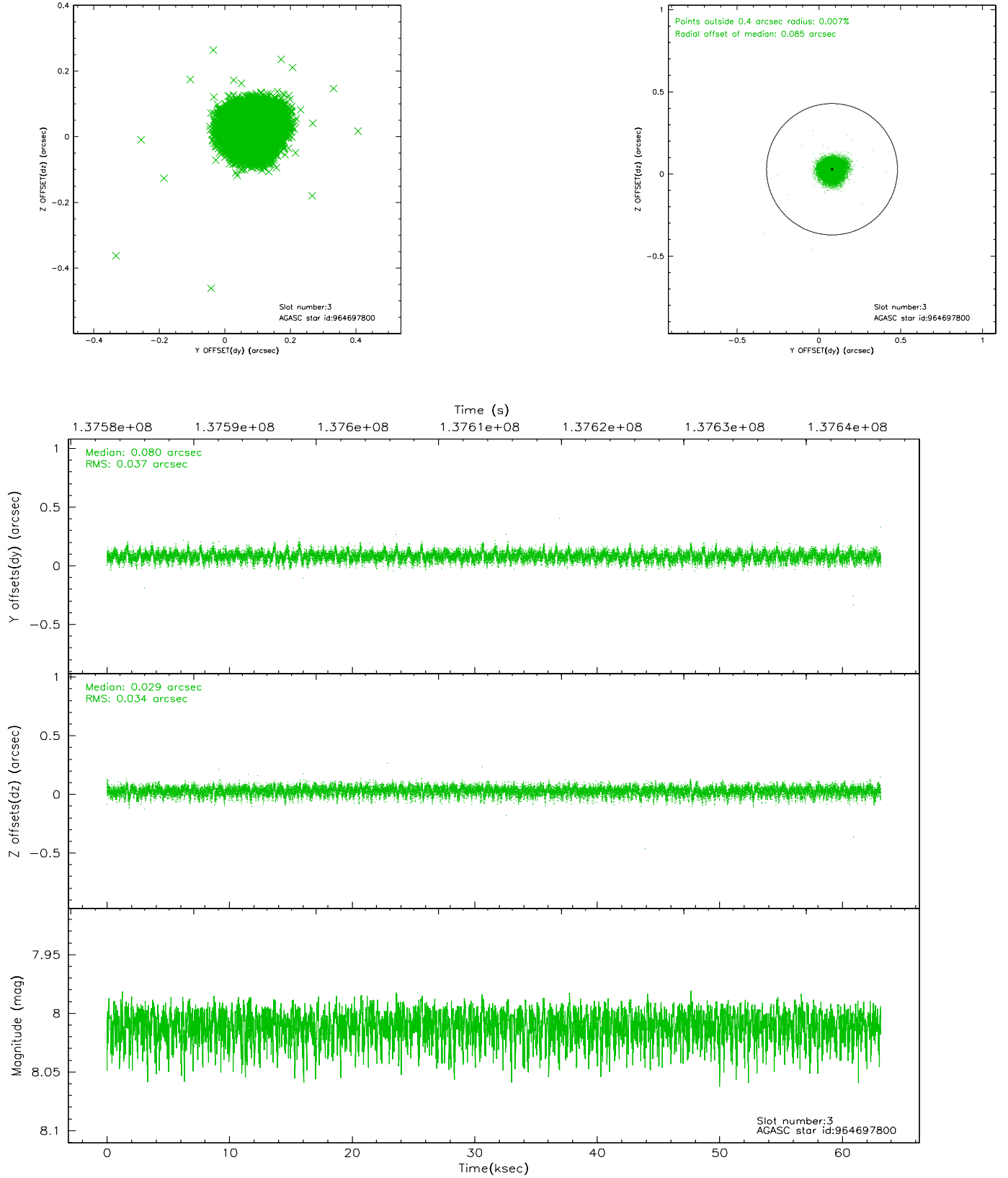


Slot Statistics

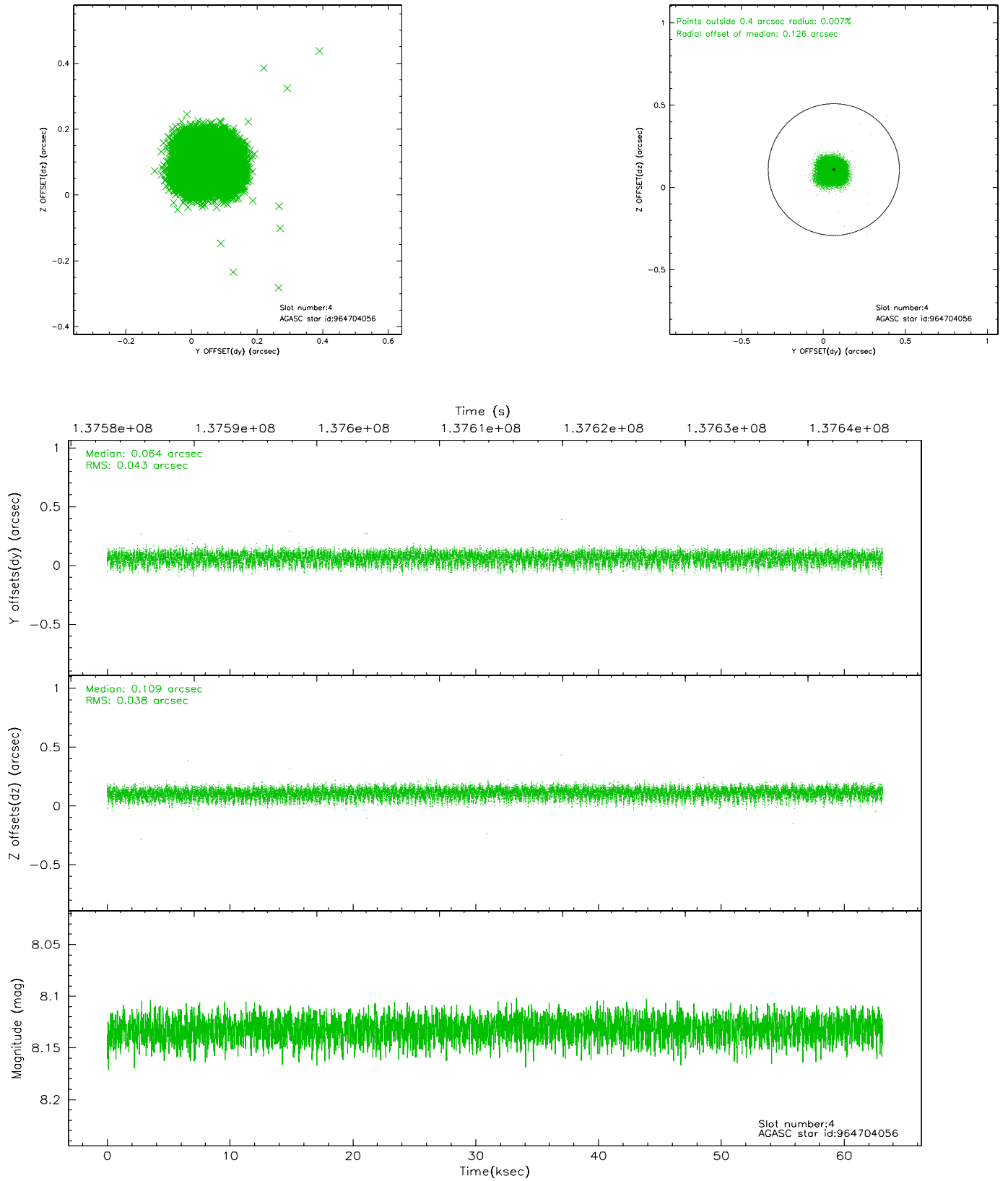
slot	status	id	mag	n_pts	med_dy	med_dz	dr1	dr2	ra	dec	mean_y	mean_z
0	FID	ACIS-S-2	7.11	15385	-0.040	0.023	0.008	0.013	0.000000	0.000000	-754.41	-1727.24
1	FID	ACIS-S-4	7.21	15384	-0.048	0.013	0.006	0.010	0.000000	0.000000	2158.84	181.33
2	FID	ACIS-S-5	7.24	15382	0.057	-0.028	0.007	0.012	0.000000	0.000000	-1807.26	174.84
3	GUIDE	964697800	8.01	30768	0.080	0.029	0.053	0.087	255.454330	-30.779005	-2138.21	-1229.03
4	GUIDE	964704056	8.13	30703	0.064	0.109	0.061	0.100	255.534594	-30.651859	-1622.53	-1301.08
5	GUIDE	894312440	8.39	30761	-0.039	0.043	0.080	0.133	256.267206	-29.720309	2314.27	-2273.79
6	GUIDE	894179704	8.73	30761	-0.142	-0.134	0.075	0.117	254.813840	-29.808957	423.88	1868.19
7	GUIDE	894191616	9.47	30627	0.041	-0.043	0.089	0.144	254.985496	-29.335021	2209.84	1972.87

2.4 Star Slots

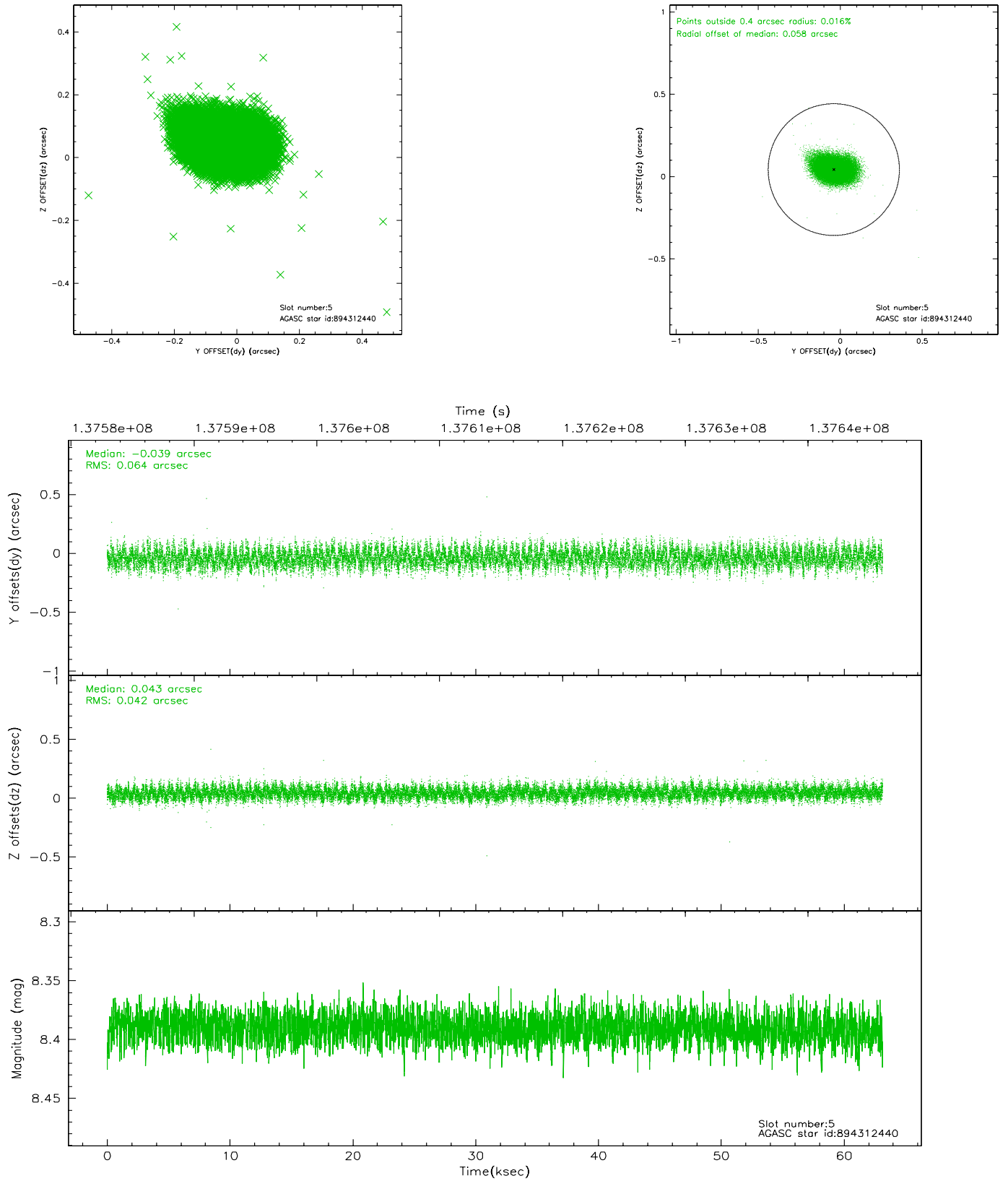
2.4.1 Slot 3



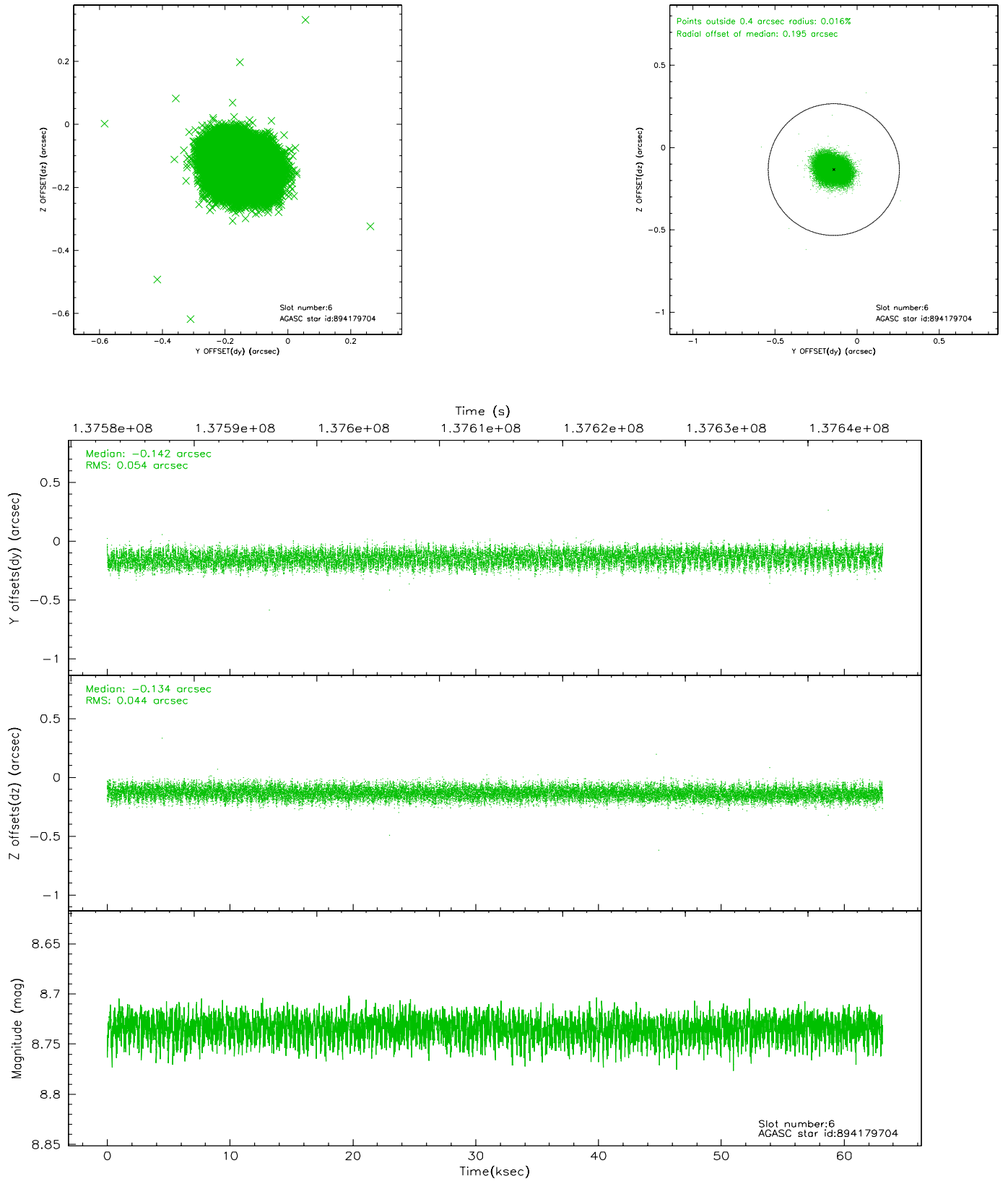
2.4.2 Slot 4



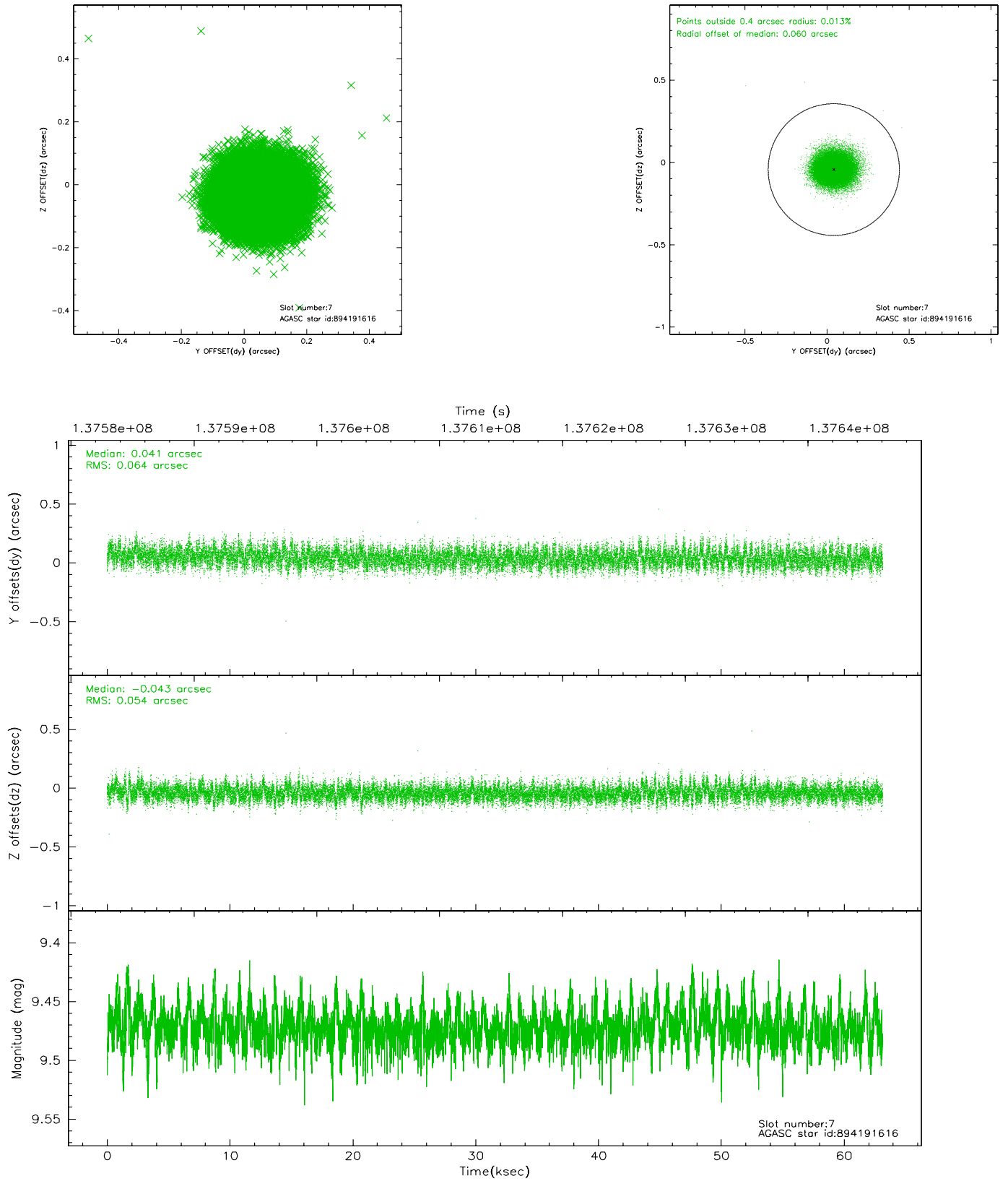
2.4.3 Slot 5



2.4.4 Slot 6

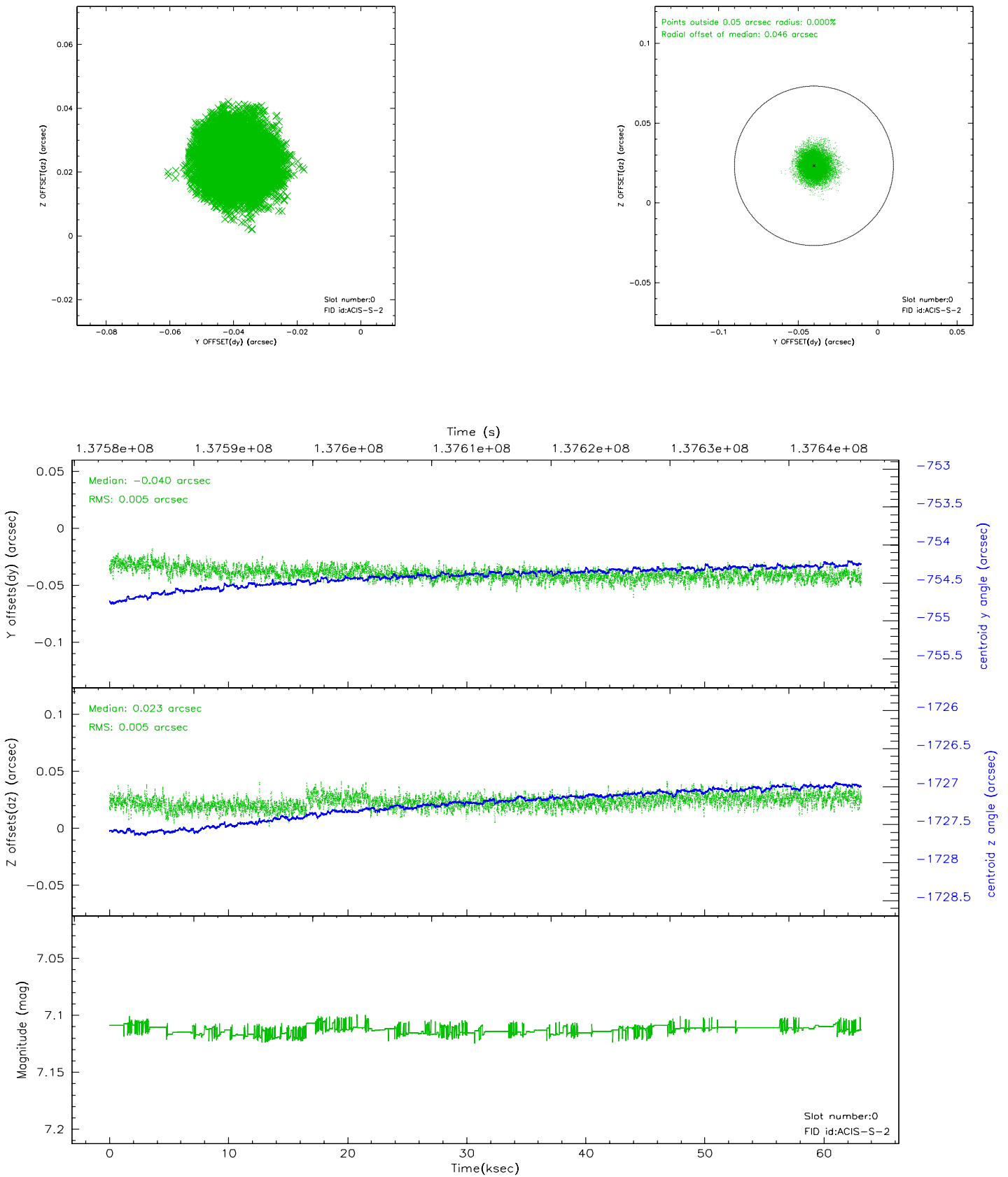


2.4.5 Slot 7

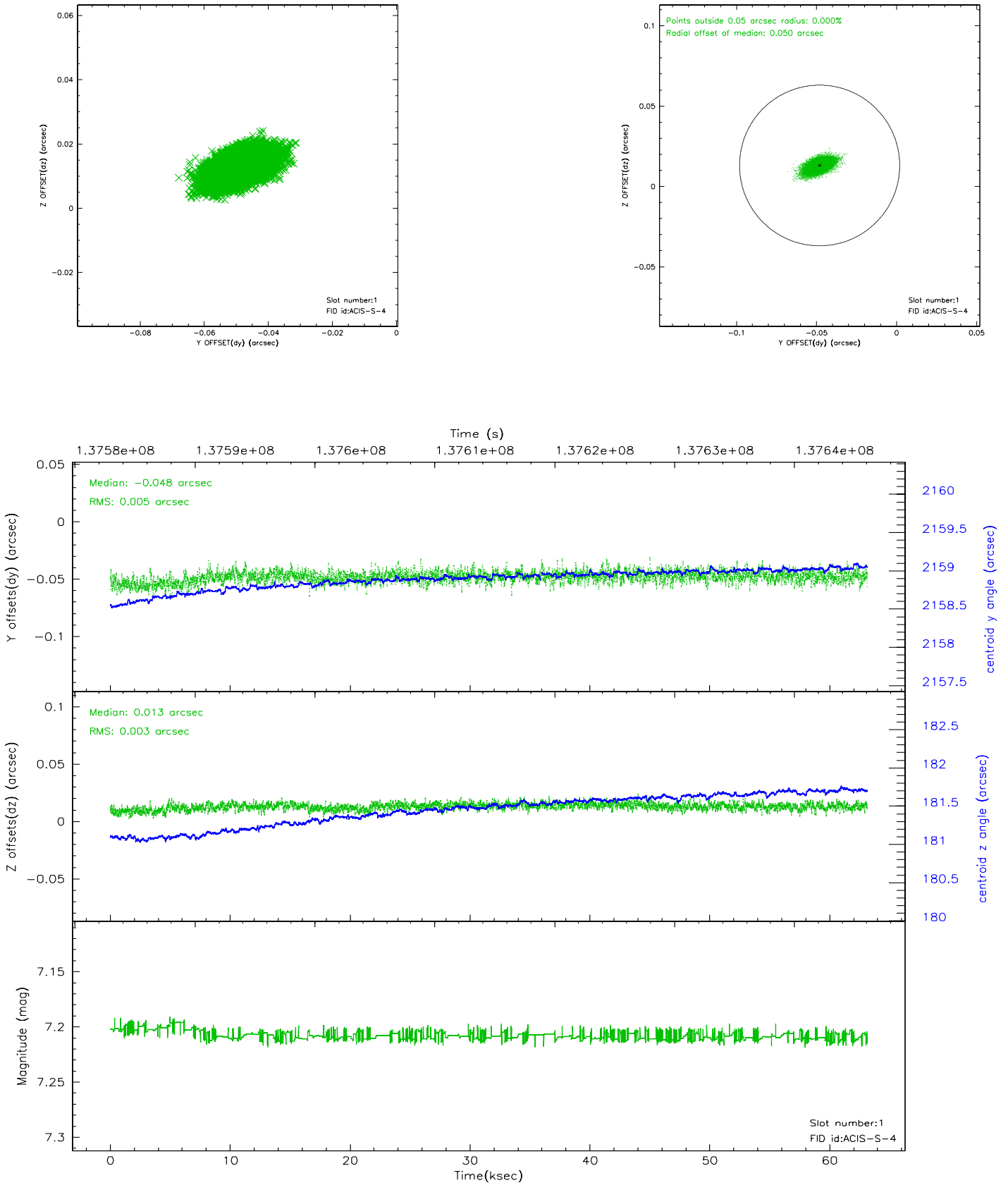


2.5 FID Slots

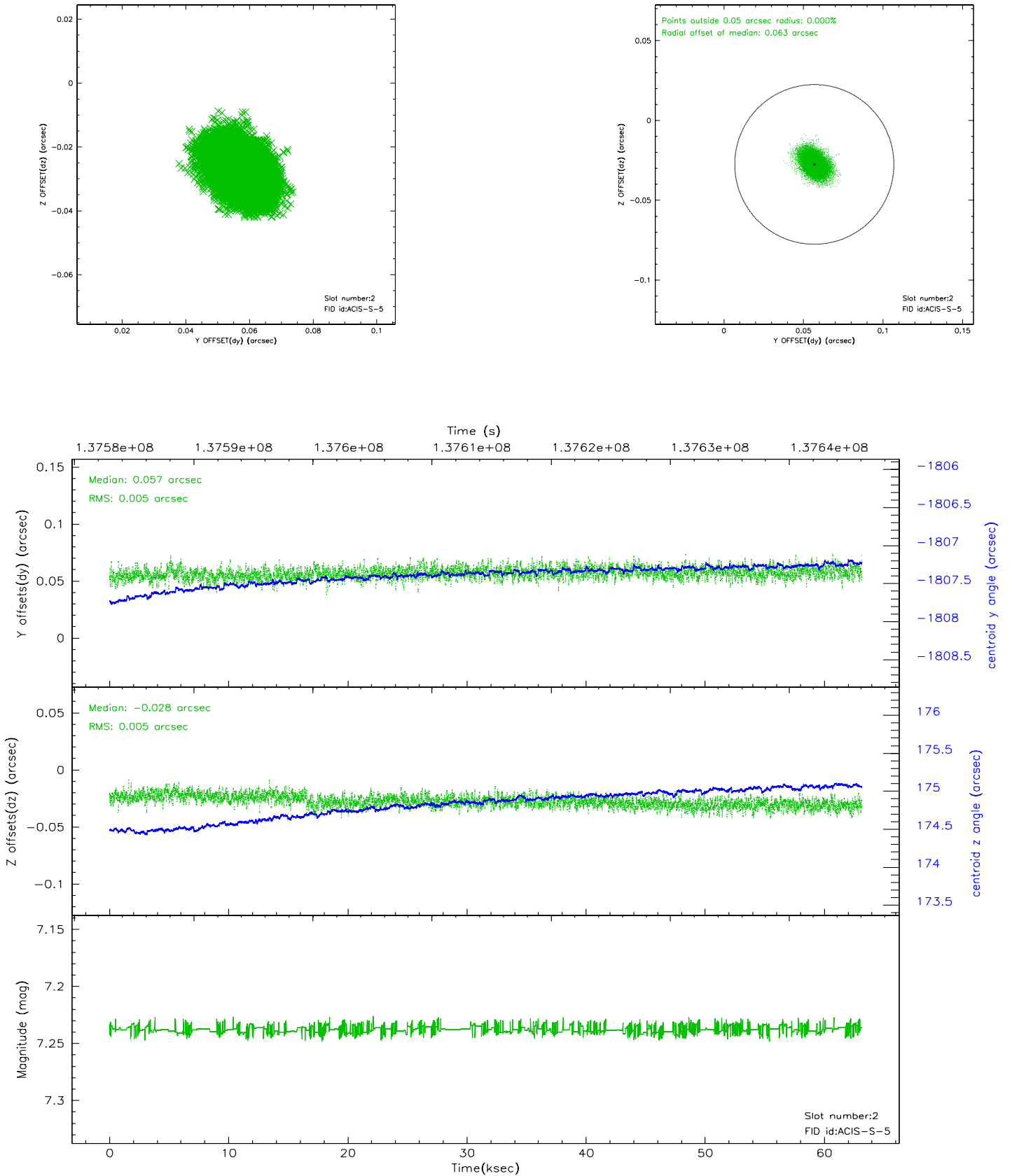
2.5.1 Slot 0



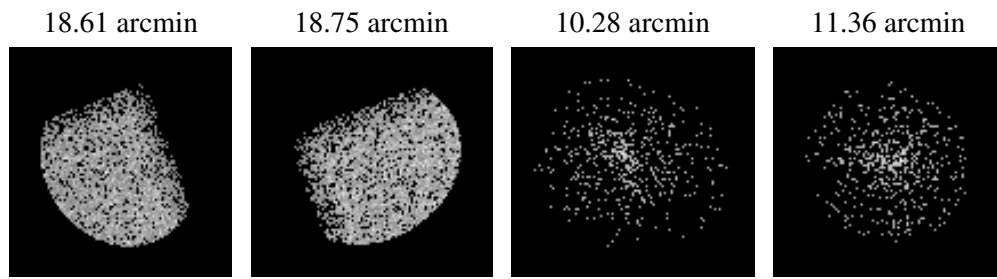
2.5.2 Slot 1



2.5.3 Slot 2



3 Point Sources



A Summary

A.1 Status

V&V Scientist	Jen Lauer
V&V Date (YYYY-MM-DD)	2006.09.18
V&V Edition	1
V&V Disposition and Status	OK
V&V Charge Time	63.061

A.2 Comments