

V&V Reference Report

L2 ASCDS Version : 7.6.9

Observation 2676 - L2 Version 001
Chandra X-Ray Center

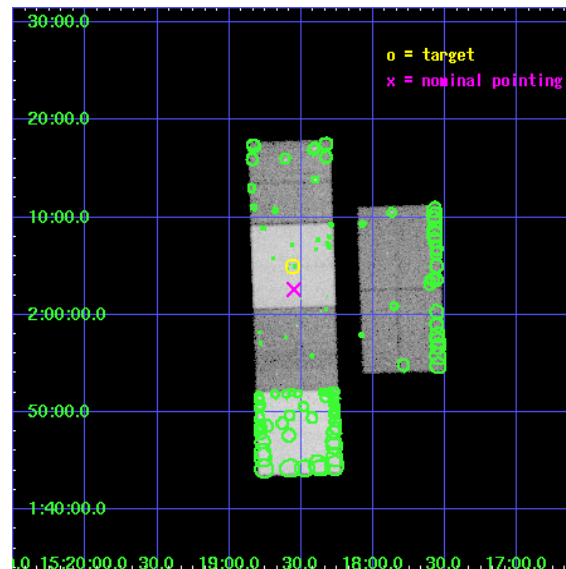
L2 Processing Date : Oct 4 2006

Contents

1	Front	2
2	OBI	3
2.1	OBI	3
2.1.1	Images	3
2.1.2	Bias	3
2.1.3	Parameters	4
2.1.4	Events	4
2.2	Compared Parameters	5
2.3	Aspect	6
2.4	Star Slots	9
2.4.1	Slot 3	9
2.4.2	Slot 4	10
2.4.3	Slot 5	11
2.4.4	Slot 6	12
2.4.5	Slot 7	13
2.5	FID Slots	14
2.5.1	Slot 0	14
2.5.2	Slot 1	15
2.5.3	Slot 2	16
3	Point Sources	17
A	Summary	18
A.1	Status	18
A.2	Comments	18

1 Front

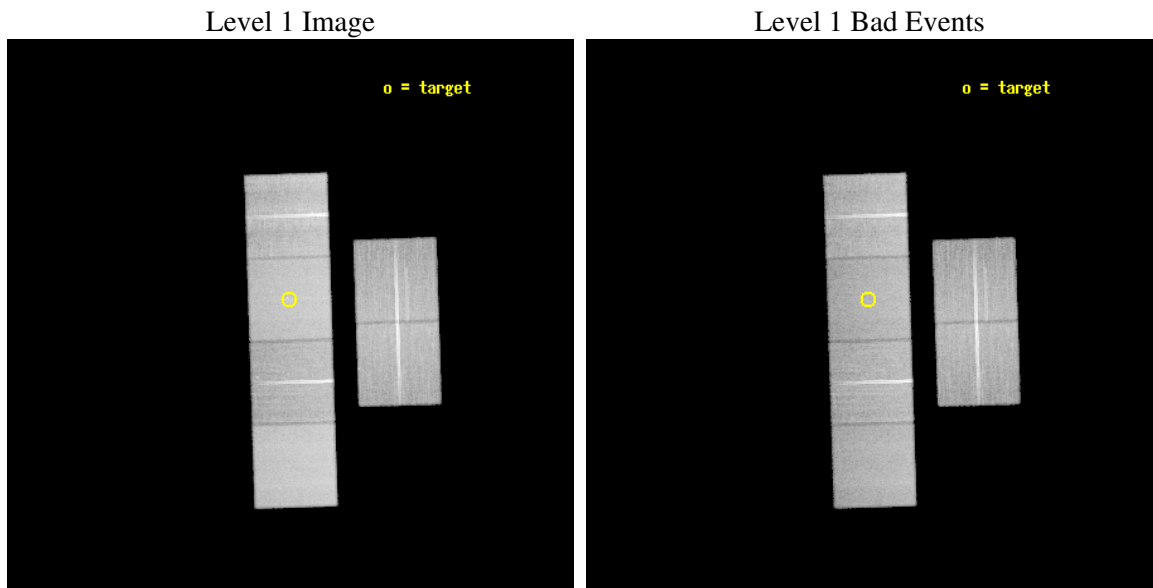
seq_num	300077
obs_id	2676
title	A UNIFORM STUDY OF GLOBULAR CLUSTER X--RAY SOURCES: THE KEYS TO CLUSTER DYNAMICAL EVOLUTION
observer	Prof. Walter Lewin
object	NGC 5904
dtcycle	0
cycle	P
ra_targ	229.640833
dec_targ	2.082694
ra_nom	229.63776997875
dec_nom	2.0432074322585
roll_nom	268.15674044509
revision	2
ontime	45228.79983151
livetime	44656.085534529
ontime2	45228.79983151
ontime3	45225.558950961
ontime5	45228.79983151
ontime6	45228.79983151
ontime7	45228.79983151
ontime8	45228.79983151
l2events	432463



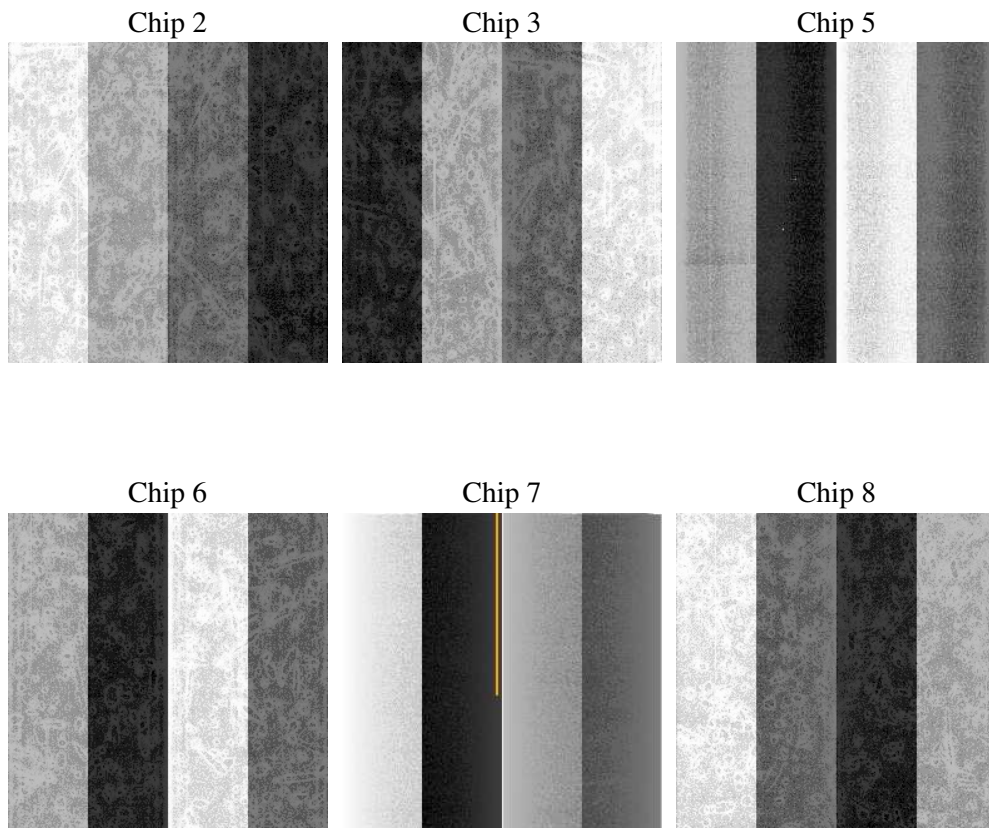
2 OBI

2.1 OBI

2.1.1 Images



2.1.2 Bias



2.1.3 Parameters

obi_num	0
ascdsver	7.6.9
caldsver	3.2.3
date	2006-10-04T19:06:57
revision	2

sched_exp_time	45270.000000
ontime	45234.609212518
ontime2	45234.609212518
ontime3	45231.368331969
ontime5	45234.609212518
ontime6	45234.609212518
ontime7	45234.609212518
ontime8	45234.609212518
l1events	1963434

2.1.4 Events

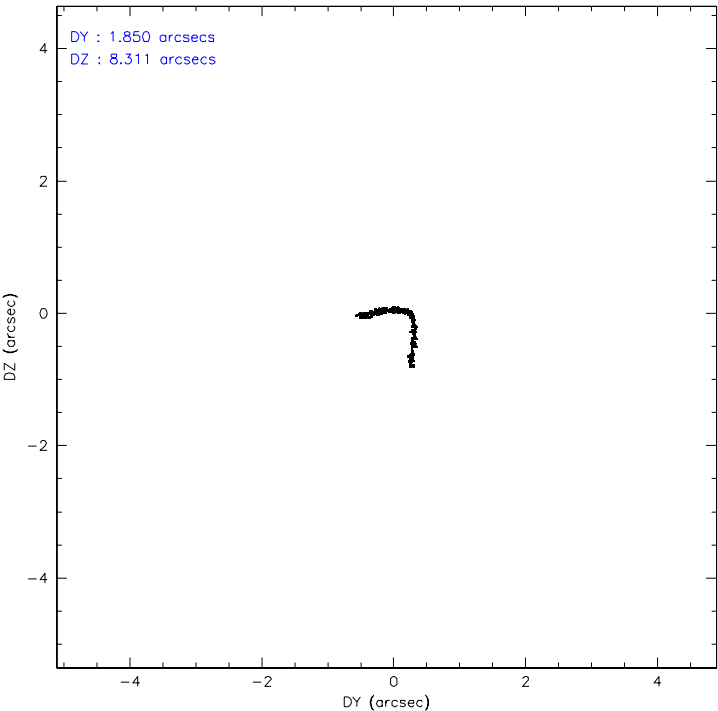
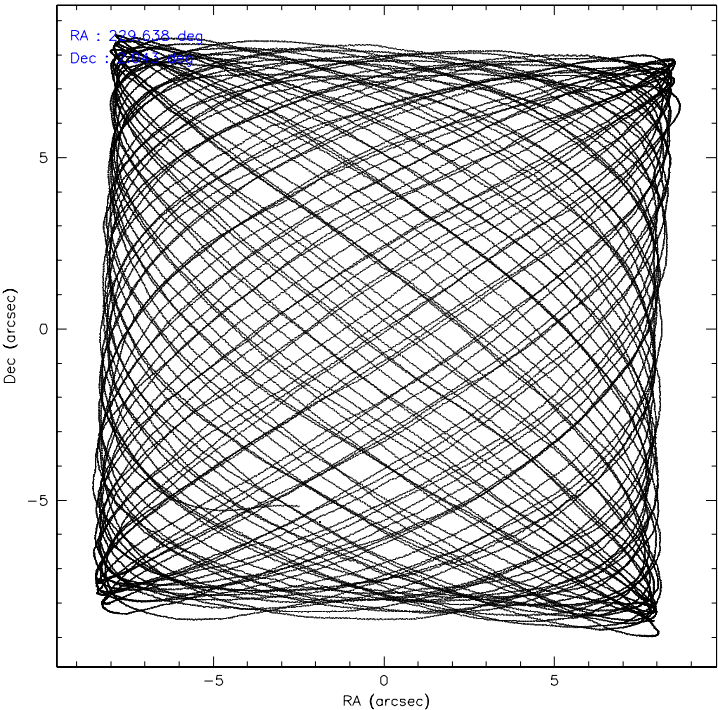
	ccd 2	ccd 3	ccd 5	ccd 6	ccd 7	ccd 8
level 1 events	284848	272904	398473	281802	372840	352567
rejected events	251367	241192	225194	247737	227807	279334
rejected %	88%	88%	56%	87%	61%	79%

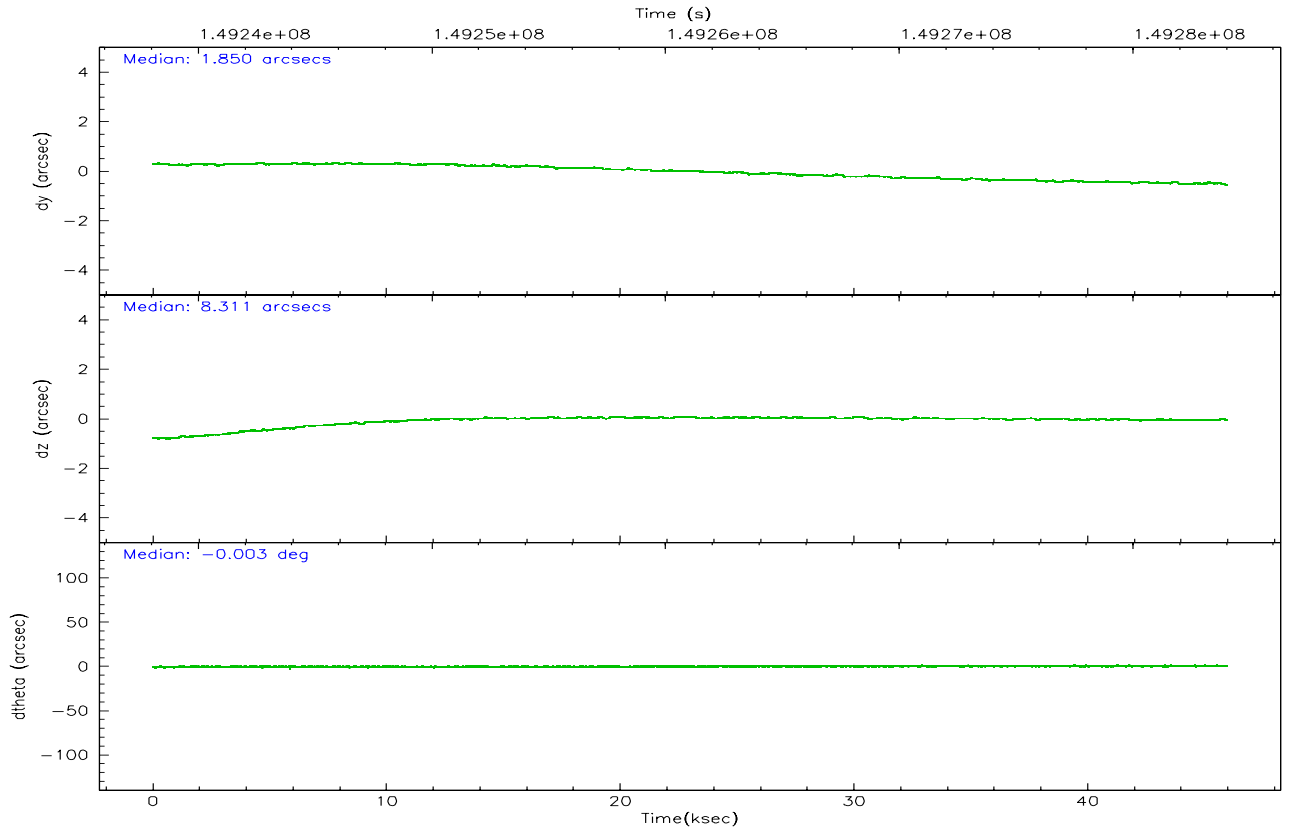
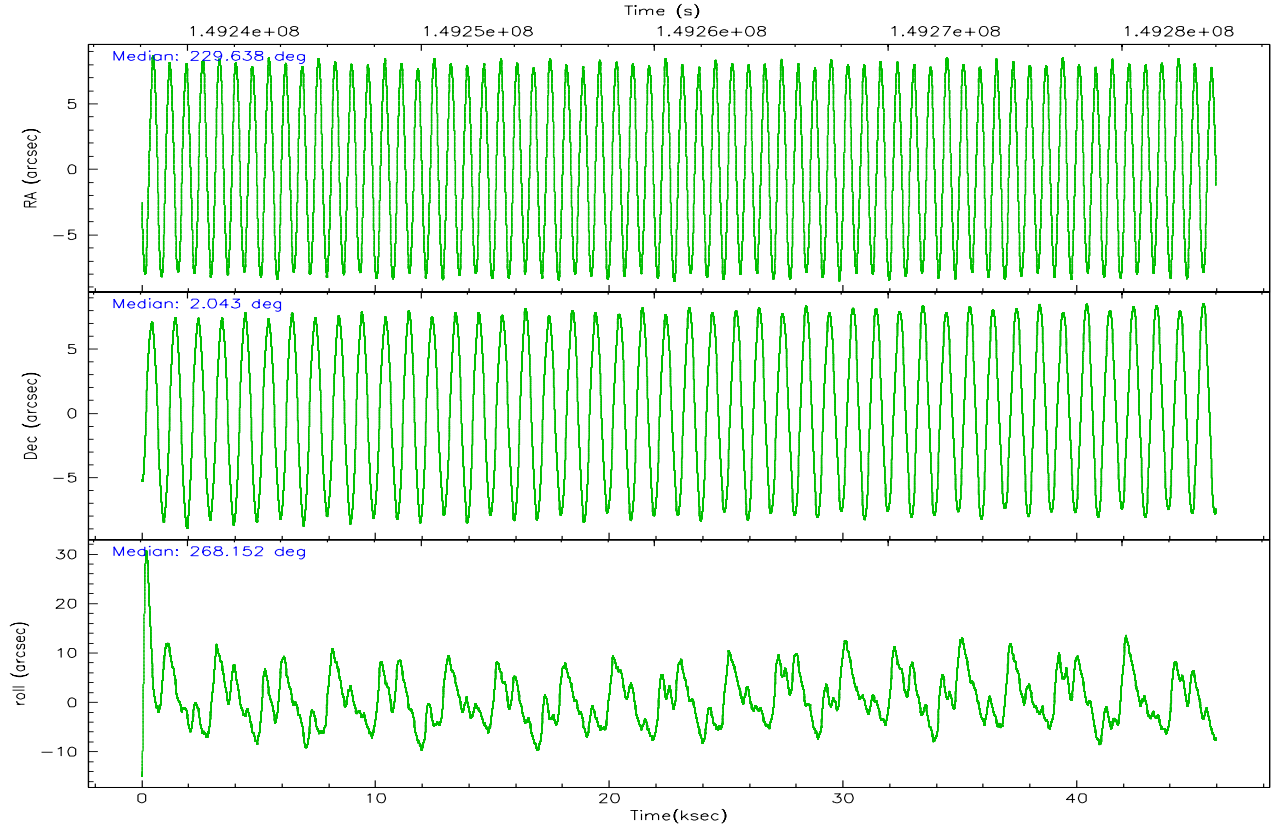
	ccd 2	ccd 3	ccd 5	ccd 6	ccd 7	ccd 8
grade 0 events	15199	14081	8405	14199	9851	24366
	5%	5%	2%	5%	2%	6%
grade 1 events	183	147	328	139	208	249
	0%	0%	0%	0%	0%	0%
grade 2 events	6589	5956	54673	6801	35517	15367
	2%	2%	13%	2%	9%	4%
grade 3 events	3215	3138	4262	3268	7708	7679
	1%	1%	1%	1%	2%	2%
grade 4 events	3133	3157	4107	3279	7677	7302
	1%	1%	1%	1%	2%	2%
grade 5 events	10676	11617	19123	12393	25041	15943
	3%	4%	4%	4%	6%	4%
grade 6 events	5351	5383	101856	6522	84297	18524
	1%	1%	25%	2%	22%	5%
grade 7 events	240502	229425	205719	235201	202541	263137
	84%	84%	51%	83%	54%	74%

2.2 Compared Parameters

Parameter	Planned	Actual	Parameter	Planned	Actual
Instrument	ACIS	ACIS	Obspar format version number	6	6
Detector	ACIS-235678	ACIS-235678	Obspar file type	PREDICTED	ACTUAL
Grating	NONE	NONE	Obspar update status	NONE	UPDATED
Data mode	FAINT	FAINT	Number of optional ACIS chips dropped	0	0
Observation mode	POINTING	POINTING	On-chip summing requested	N	N
Pointing RA	229.624603	229.6377699787525	Subarray requested	NONE	NONE
Pointing Dec	2.067045	2.04320743225849	Alternating exposures requested	N	N
Pointing Roll	268.000585	268.1567404450947	Primary exposure time	0.000000	3.2
SIM focus pos (mm)	-0.684267	-0.6828225247311905			
SIM defocus (mm)	0	0.001444936568705701			
SIM translation stage pos (mm)	-190.132523	-190.1400660498719			
SIM translation stage offset (mm)	0	0.00754346686406393			
Observation start time	149238767.184000	149237546.47499			
Observation start date	2002-09-24T07:11:43	2002-09-24T06:52:26			
Observation end time	149284037.184000	149284820.50195			
Observation end date	2002-09-24T19:46:13	2002-09-24T20:00:20			
Read mode	TIMED	TIMED			

2.3 Aspect



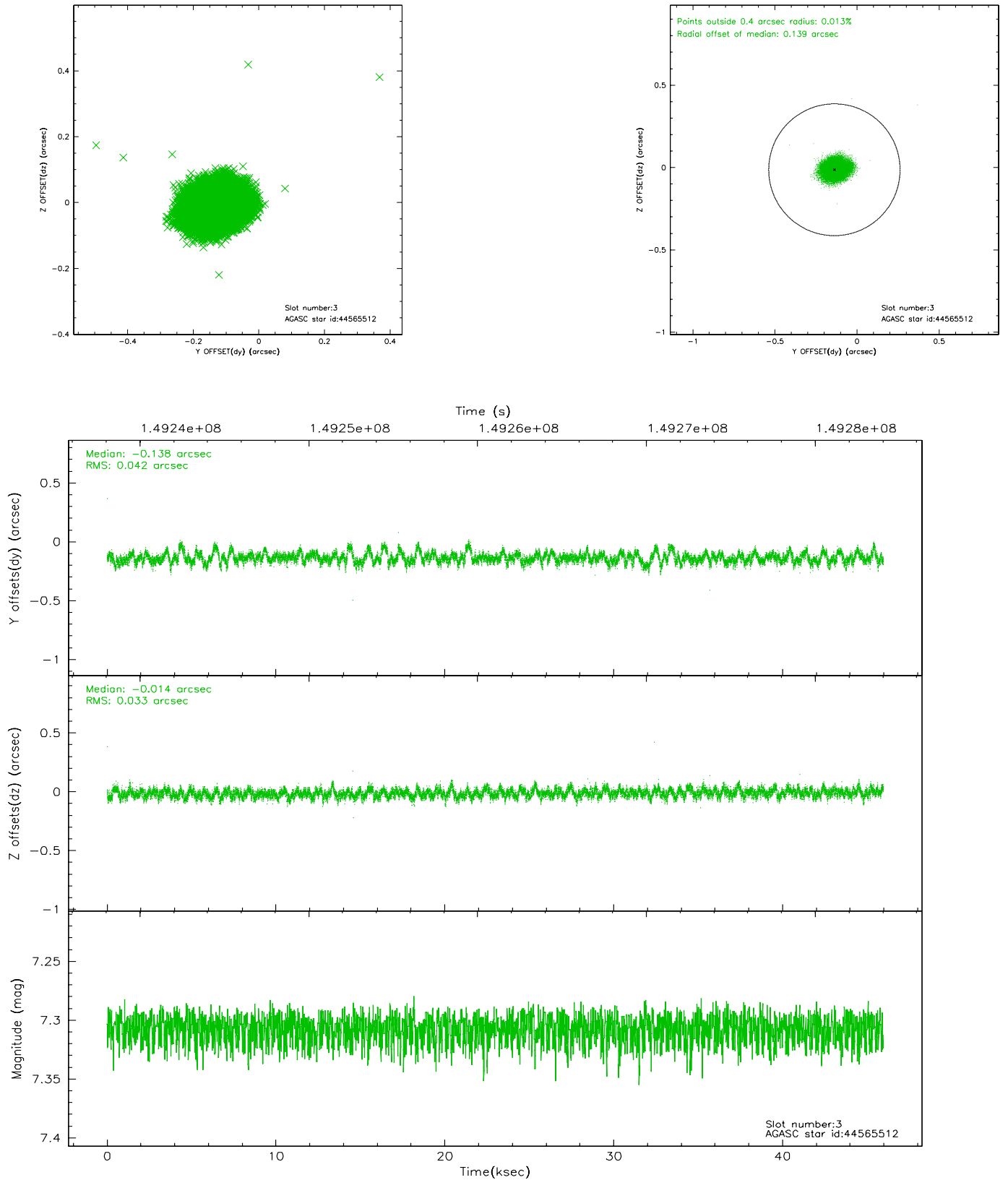


Slot Statistics

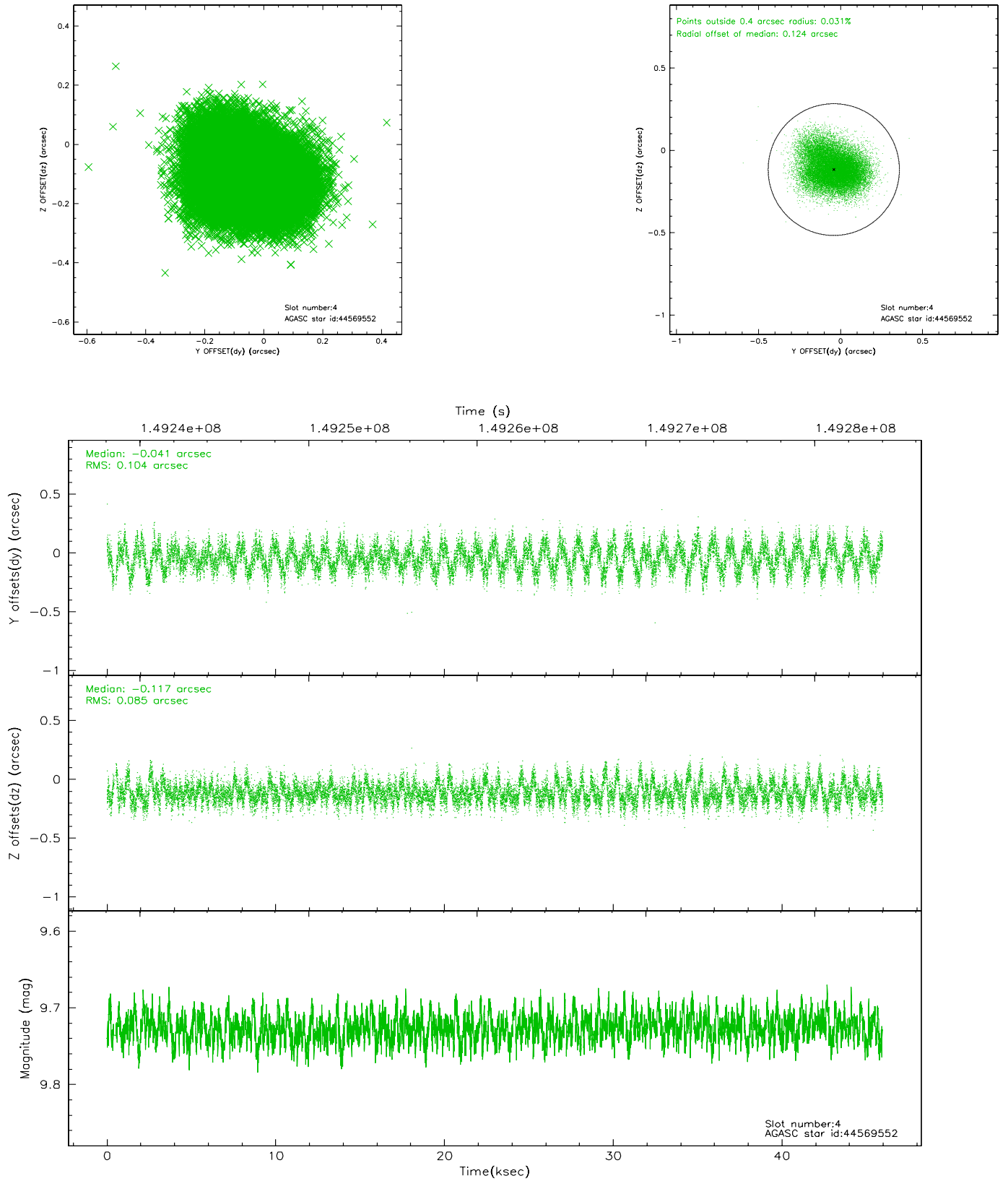
slot	status	id	mag	n_pts	med_dy	med_dz	dr1	dr2	ra	dec	mean_y	mean_z
0	FID	ACIS-S-2	6.89	11210	-0.014	0.025	0.007	0.012	0.000000	0.000000	-754.46	-1729.38
1	FID	ACIS-S-4	6.99	11209	-0.048	-0.000	0.005	0.010	0.000000	0.000000	2158.81	179.04
2	FID	ACIS-S-5	6.98	11208	0.031	-0.016	0.008	0.014	0.000000	0.000000	-1807.24	172.74
3	GUIDE	44565512	7.31	22418	-0.138	-0.014	0.056	0.095	229.011245	2.167910	-286.48	-2216.95
4	GUIDE	44569552	9.73	22335	-0.041	-0.117	0.145	0.229	229.210400	2.709300	-2259.05	-1568.87
5	GUIDE	44041960	9.98	22396	0.253	0.219	0.128	0.203	230.227542	1.405463	2304.07	2253.10
6	GUIDE	44569160	9.31	22409	-0.097	-0.100	0.101	0.166	230.146173	2.118391	-250.80	1869.67
7	GUIDE	44565920	10.23	22398	0.022	0.008	0.176	0.299	229.874975	2.437916	-1366.05	854.32

2.4 Star Slots

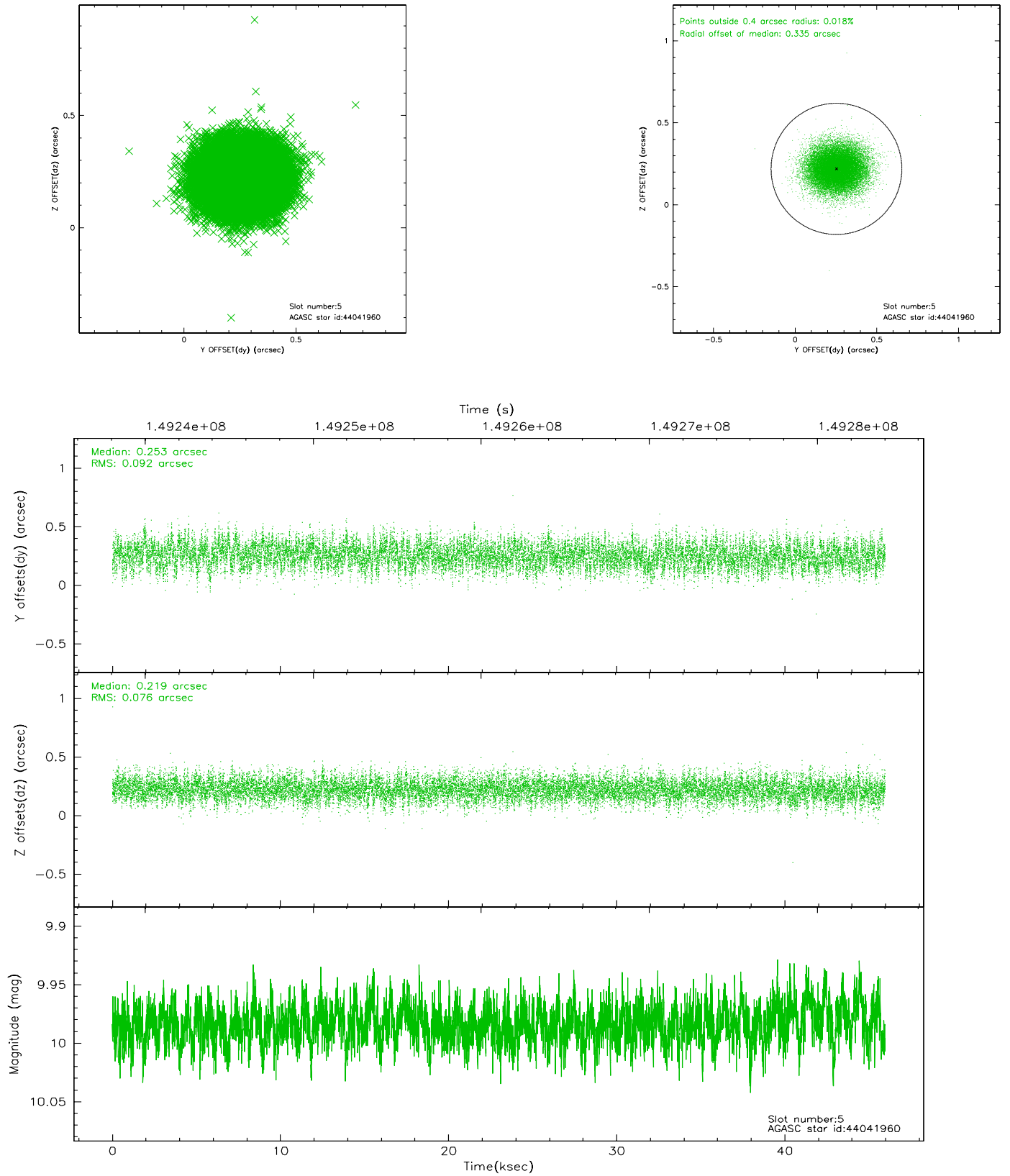
2.4.1 Slot 3



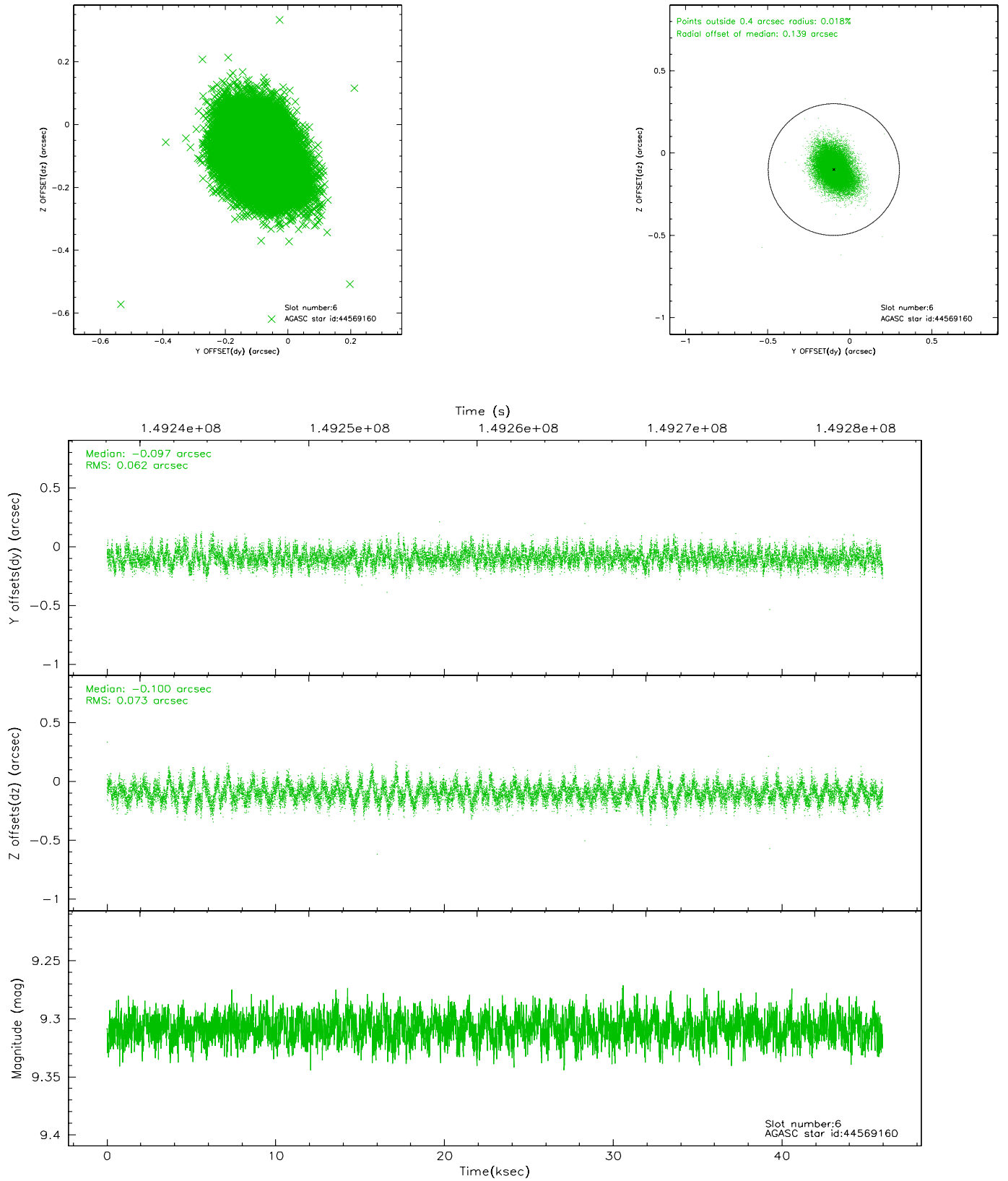
2.4.2 Slot 4



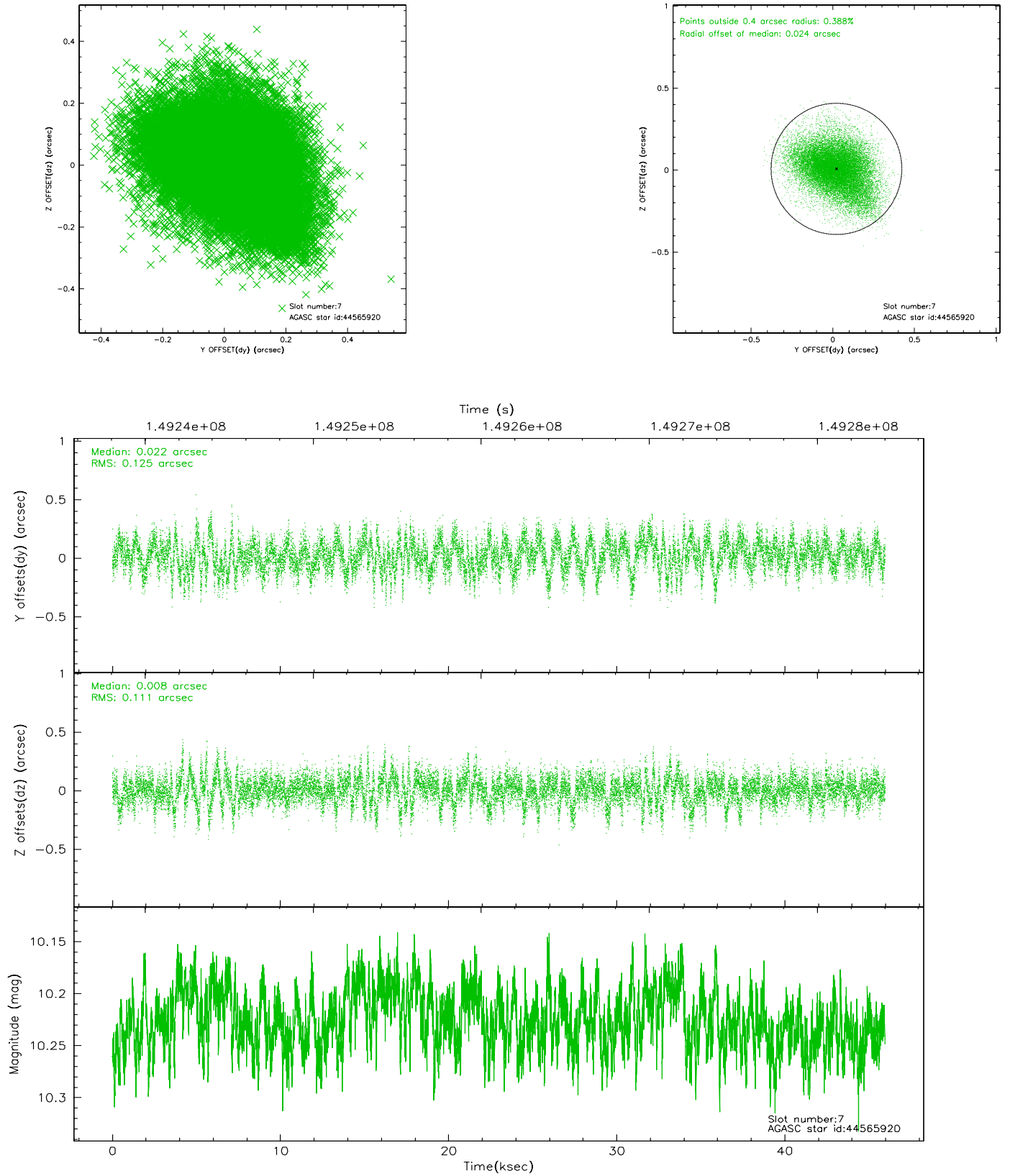
2.4.3 Slot 5



2.4.4 Slot 6

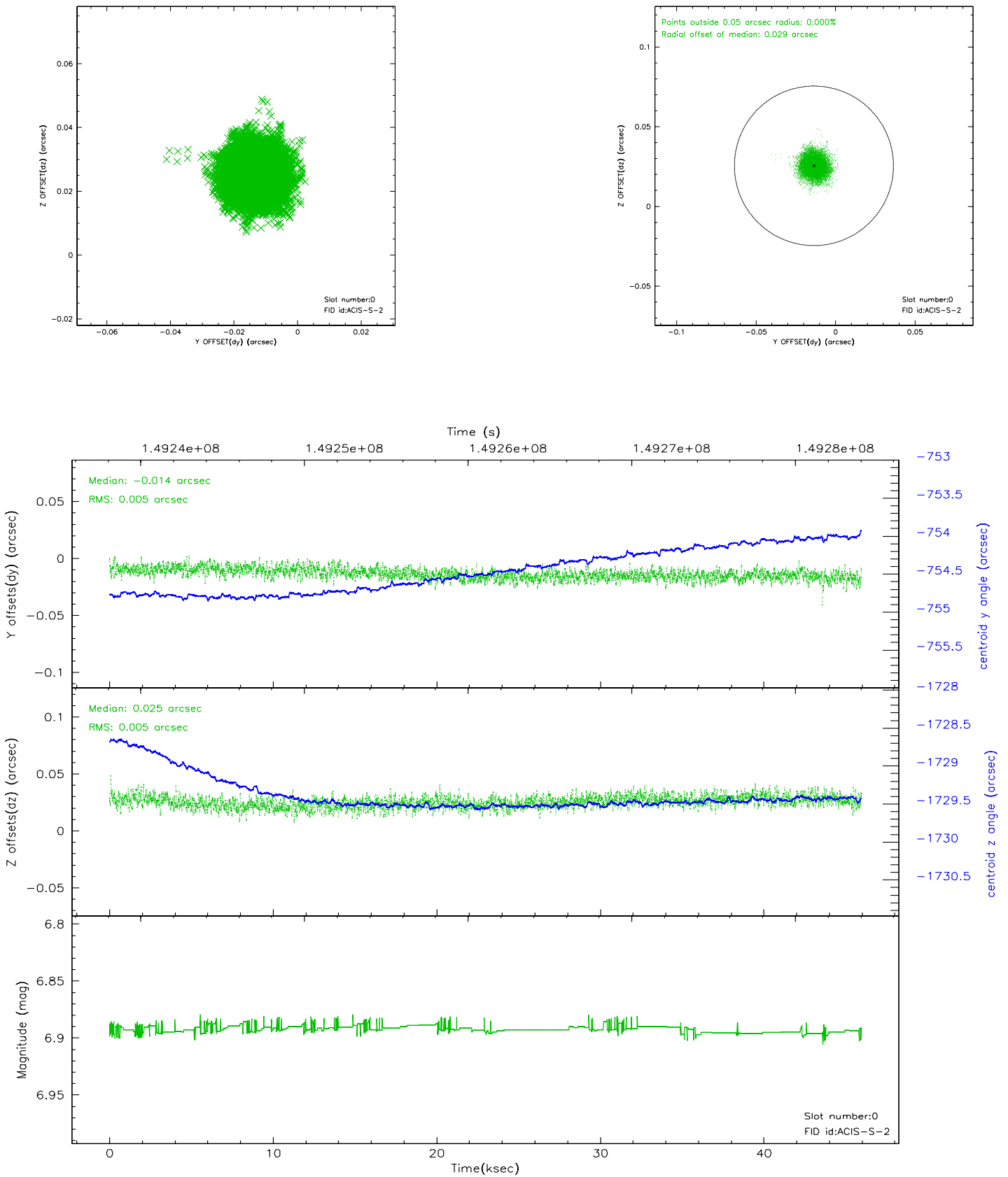


2.4.5 Slot 7

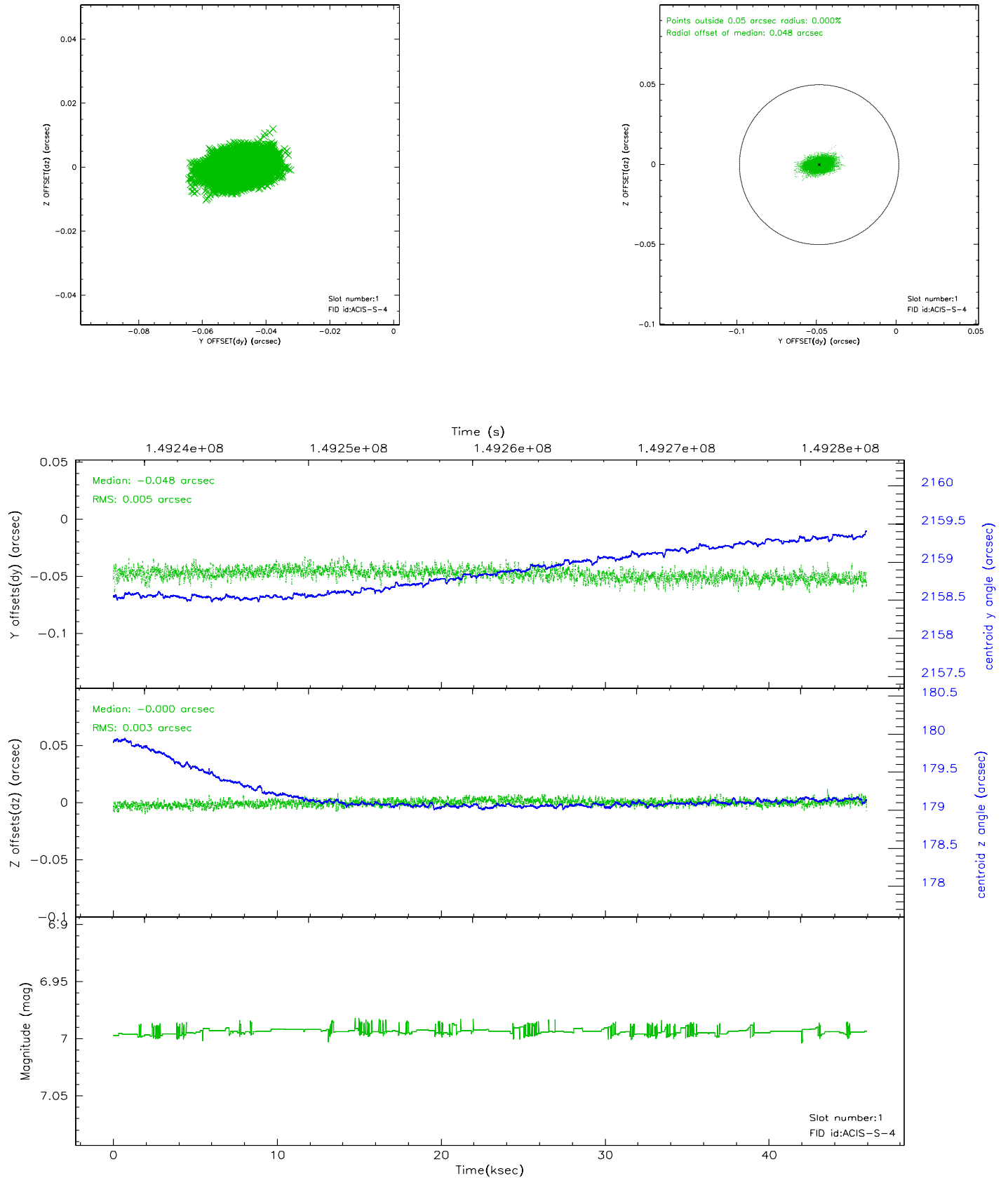


2.5 FID Slots

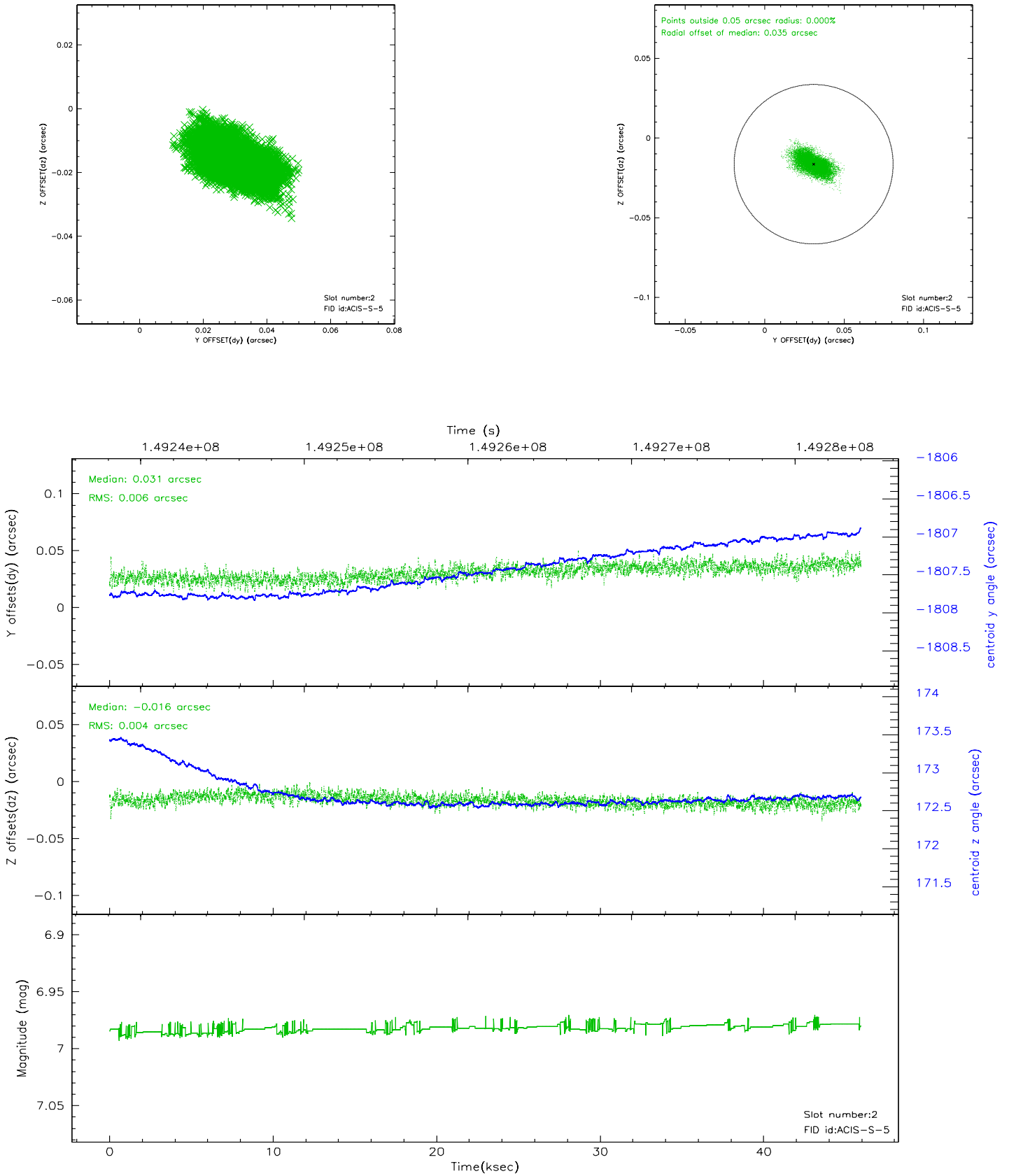
2.5.1 Slot 0



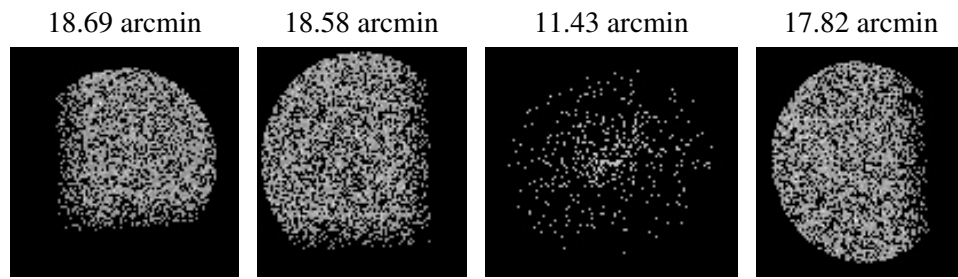
2.5.2 Slot 1



2.5.3 Slot 2



3 Point Sources



A Summary

A.1 Status

V&V Scientist	Jen Lauer
V&V Date (YYYY-MM-DD)	2006.10.05
V&V Edition	1
V&V Disposition and Status	OK
V&V Charge Time	45.231

A.2 Comments

Focal plane temperature is warmer than -118.7 C degrees during the first 4 ksec of this observation. The ACIS spectral response calibration for the front-illuminated chips is less accurate at these warmer temperatures than it is at -119.7 C. The back-illuminated chips are not affected at the focal plane temperatures recorded for this observation. Users whose science objectives depend on the most accurate spectral response (i.e.: fitting line-rich spectra) may notice an effect. Users whose science objectives do not depend on the most accurate spectral response should not notice an effect.