

V&V Reference Report

L2 ASCDS Version : 7.6.10

Observation 3363 - L2 Version 001
Chandra X-Ray Center

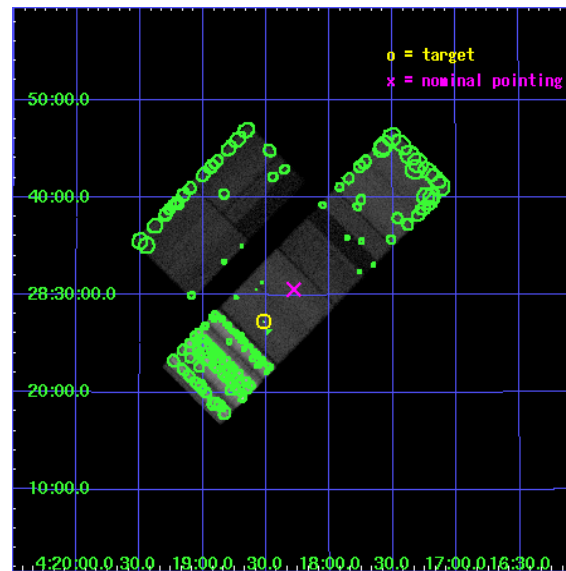
L2 Processing Date : Jan 12 2007

Contents

1	Front	2
2	OBI	3
2.1	OBI	3
2.1.1	Images	3
2.1.2	Bias	3
2.1.3	Parameters	4
2.1.4	Events	4
2.2	Compared Parameters	5
2.3	Aspect	6
2.4	Star Slots	9
2.4.1	Slot 3	9
2.4.2	Slot 4	10
2.4.3	Slot 5	11
2.4.4	Slot 6	12
2.4.5	Slot 7	13
2.5	FID Slots	14
2.5.1	Slot 0	14
2.5.2	Slot 1	15
2.5.3	Slot 2	16
3	Point Sources	17
A	Summary	18
A.1	Status	18
A.2	Comments	18

1 Front

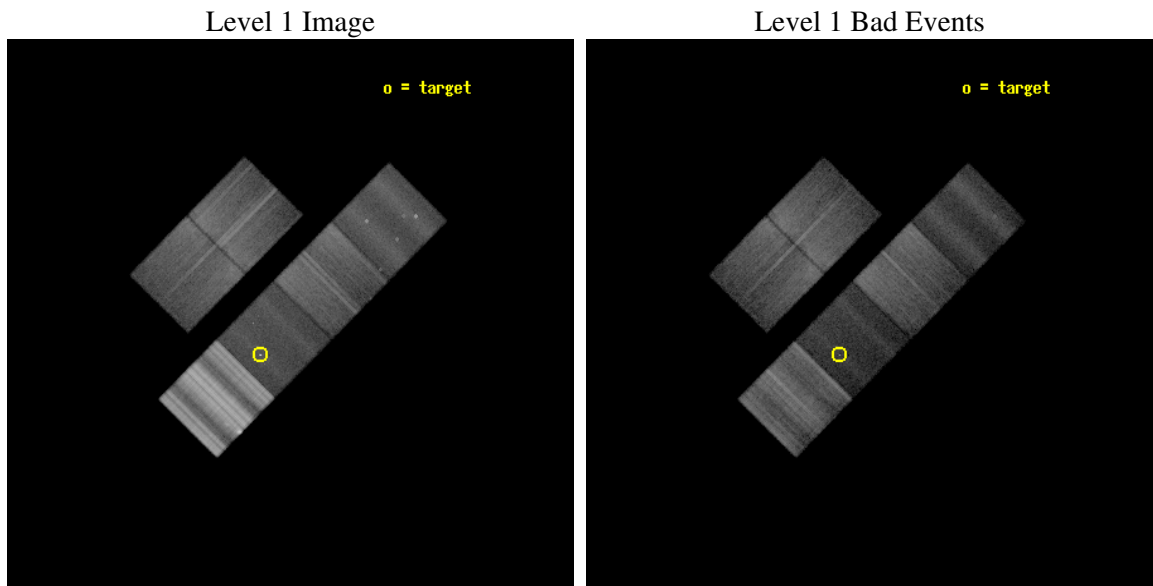
seq_num	200190
obs_id	3363
title	ORIGIN OF THE X-RAY EMISSION OF THE PREMAIN SEQUENCE STAR V 410 TAU
observer	Dr. Peter Predehl
object	V 410 TAU
dtcycle	0
cycle	P
ra_targ	64.629583
dec_targ	28.454444
ra_nom	64.57067701133
dec_nom	28.509790877403
roll_nom	134.54951874025
revision	2
ontime	11148.800010383
livetime	11007.62719165
ontime2	11148.800010383
ontime3	11148.800010383
ontime5	11148.800010383
ontime6	11148.800010383
ontime7	11148.800010383
ontime8	11148.800010383
l2events	582987



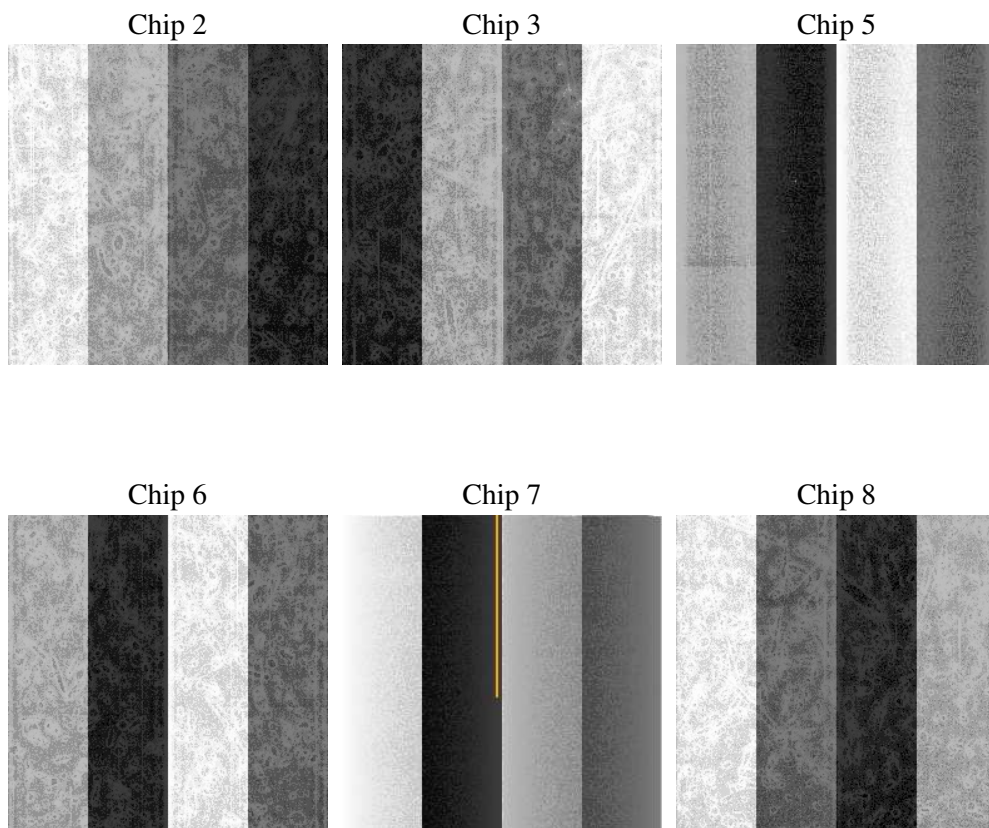
2 OBI

2.1 OBI

2.1.1 Images



2.1.2 Bias



2.1.3 Parameters

obi_num	0
ascdsver	7.6.10
caldsver	3.3.0
date	2007-01-12T11:34:27
revision	2

sched_exp_time	13801.409000
ontime	11148.800010383
ontime2	11148.800010383
ontime3	11148.800010383
ontime5	11148.800010383
ontime6	11148.800010383
ontime7	11148.800010383
ontime8	11148.800010383
l1events	1747102

2.1.4 Events

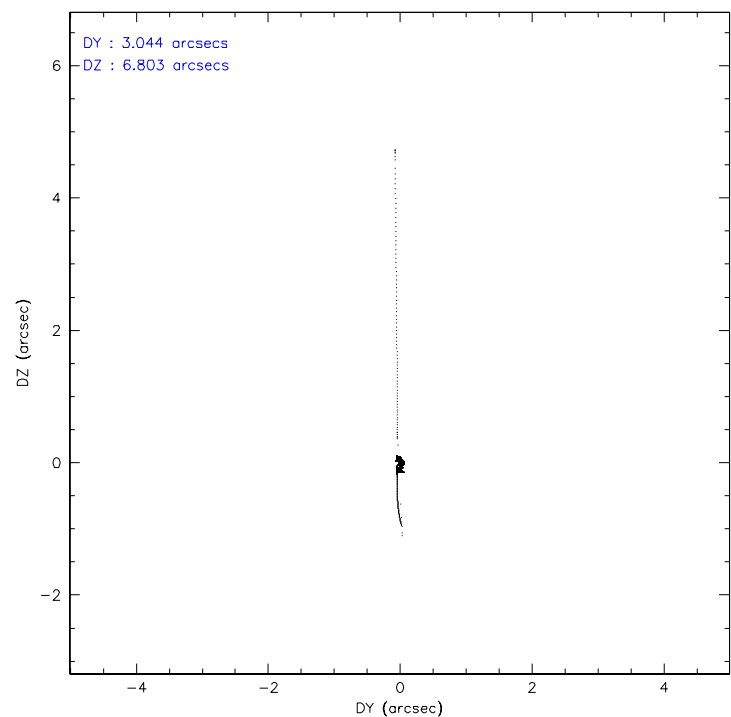
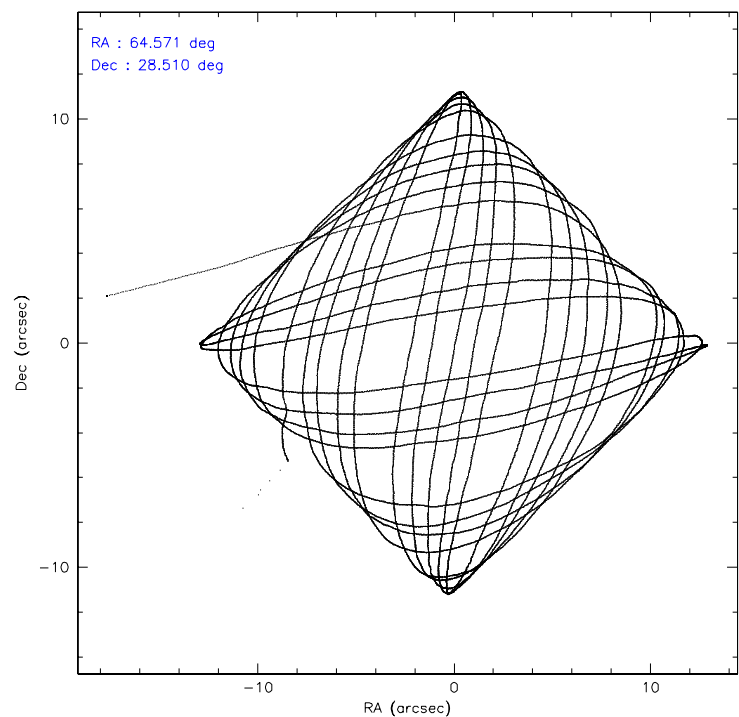
	ccd 2	ccd 3	ccd 5	ccd 6	ccd 7	ccd 8
level 1 events	231131	200561	168464	224023	135766	787157
rejected events	181012	161775	90289	178294	68189	226445
rejected %	78%	80%	53%	79%	50%	28%

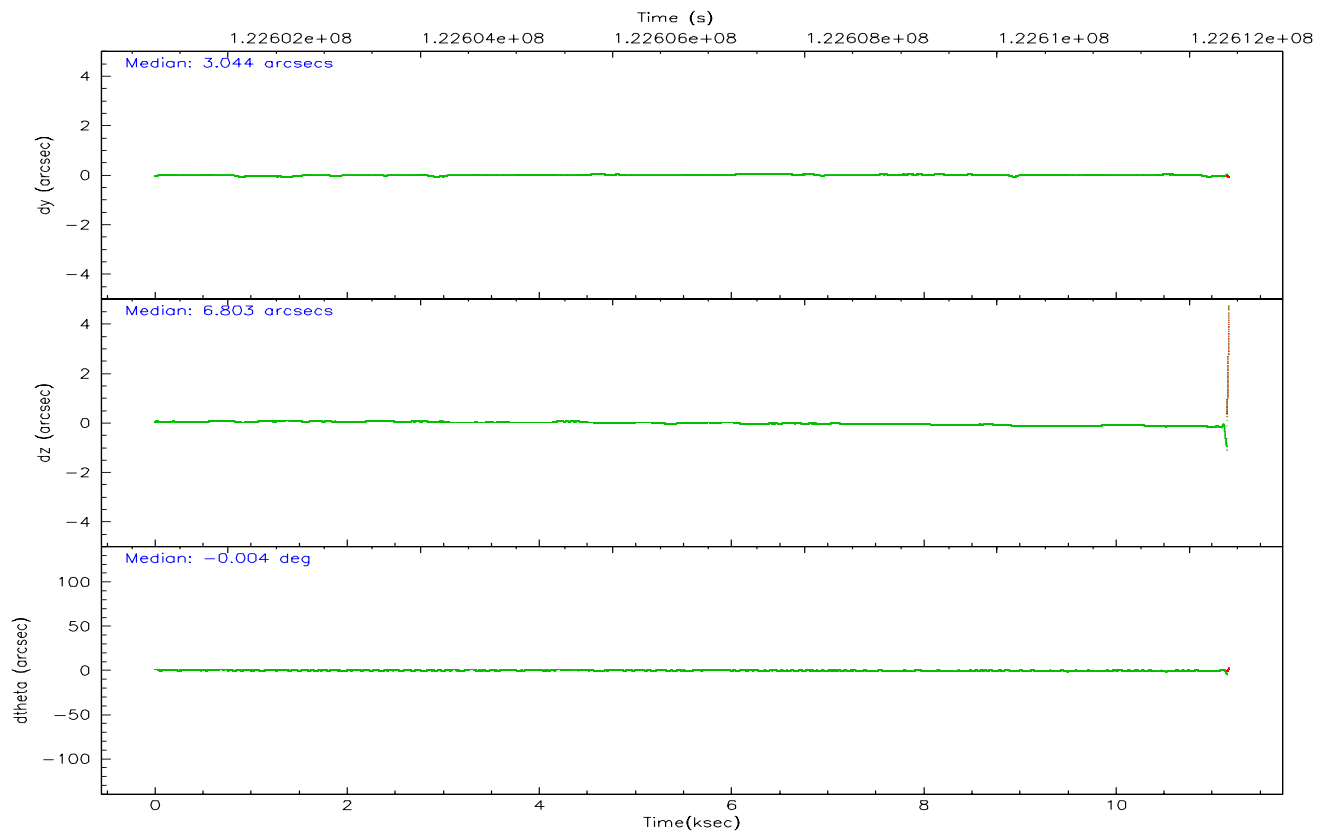
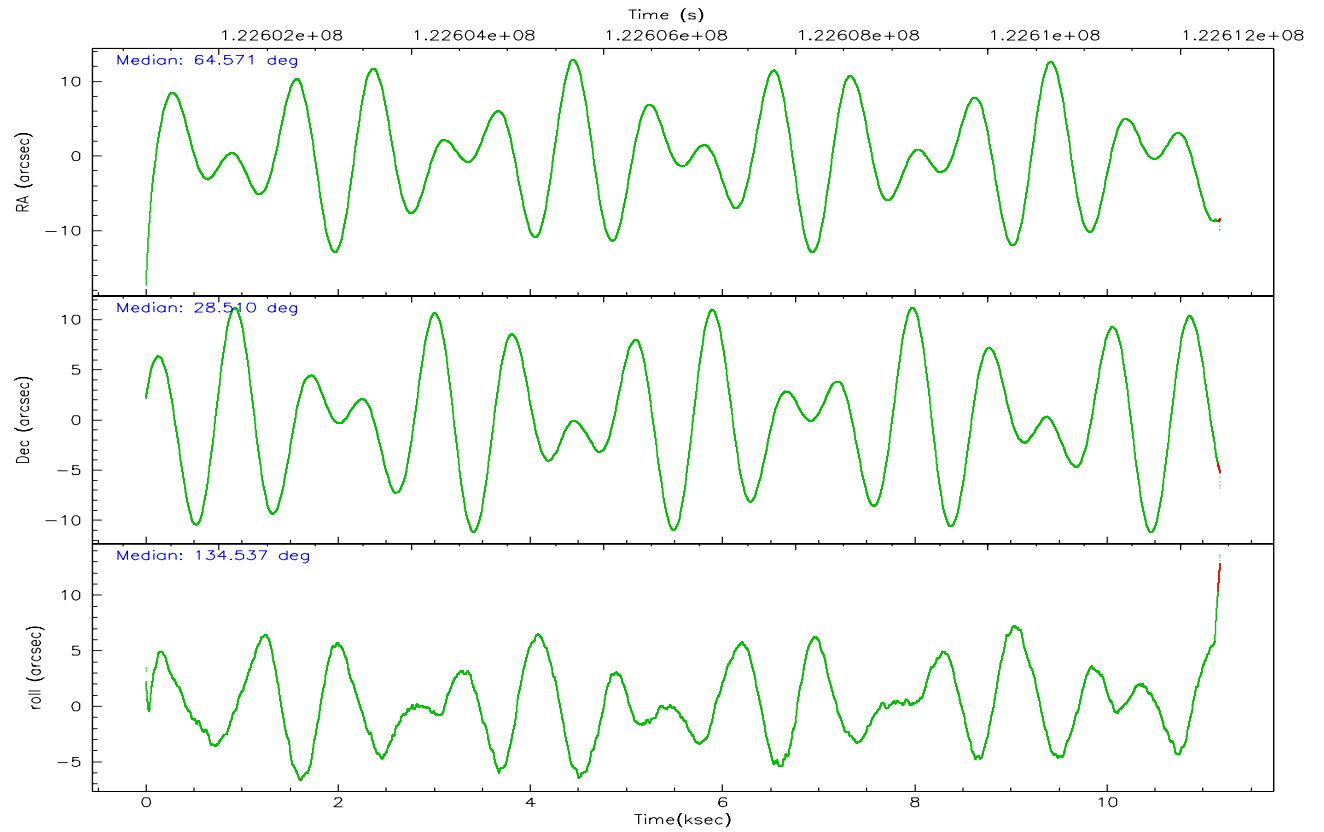
	ccd 2	ccd 3	ccd 5	ccd 6	ccd 7	ccd 8
grade 0 events	21660	12545	10270	18717	8622	183118
	9%	6%	6%	8%	6%	23%
grade 1 events	223	90	555	163	385	1626
	0%	0%	0%	0%	0%	0%
grade 2 events	15731	14258	25242	16447	16560	70575
	6%	7%	14%	7%	12%	8%
grade 3 events	1072	1191	6325	1236	6751	109916
	0%	0%	3%	0%	4%	13%
grade 4 events	3017	1431	6234	1387	6628	96996
	1%	0%	3%	0%	4%	12%
grade 5 events	2961	2961	10943	3250	11321	11047
	1%	1%	6%	1%	8%	1%
grade 6 events	9492	9952	31354	8665	30091	109073
	4%	4%	18%	3%	22%	13%
grade 7 events	176975	158133	77541	174158	55408	204806
	76%	78%	46%	77%	40%	26%

2.2 Compared Parameters

Parameter	Planned	Actual	Parameter	Planned	Actual
Instrument	ACIS	ACIS	Obspar format version number	6	6
Detector	ACIS-235678	ACIS-235678	Obspar file type	PREDICTED	ACTUAL
Grating	NONE	NONE	Obspar update status	NONE	UPDATED
Data mode	FAINT	FAINT	Number of optional ACIS chips dropped	0	0
Observation mode	POINTING	POINTING	On-chip summing requested	N	N
Pointing RA	64.600689	64.57067701132954	Subarray requested	NONE	NONE
Pointing Dec	28.502812	28.50979087740345	Alternating exposures requested	N	N
Pointing Roll	134.378569	134.5495187402468	Primary exposure time	0.000000	3.2
Window start time	122587264.184000	122587264.184000			
Window stop time	122619664.184000	122619664.184000			
SIM focus pos (mm)	-0.684267	-0.6828225247311905			
SIM defocus (mm)	0	0.001444936568705701			
SIM translation stage pos (mm)	-190.132523	-190.1400660498719			
SIM translation stage offset (mm)	0	0.00754346686406393			
Observation start time	122601362.184000	122600244.62896			
Observation start date	2001-11-19T23:54:58	2001-11-19T23:37:24			
Observation end time	122615164.184000	122612437.00444			
Observation end date	2001-11-20T03:45:00	2001-11-20T03:00:37			
Read mode	TIMED	TIMED			

2.3 Aspect



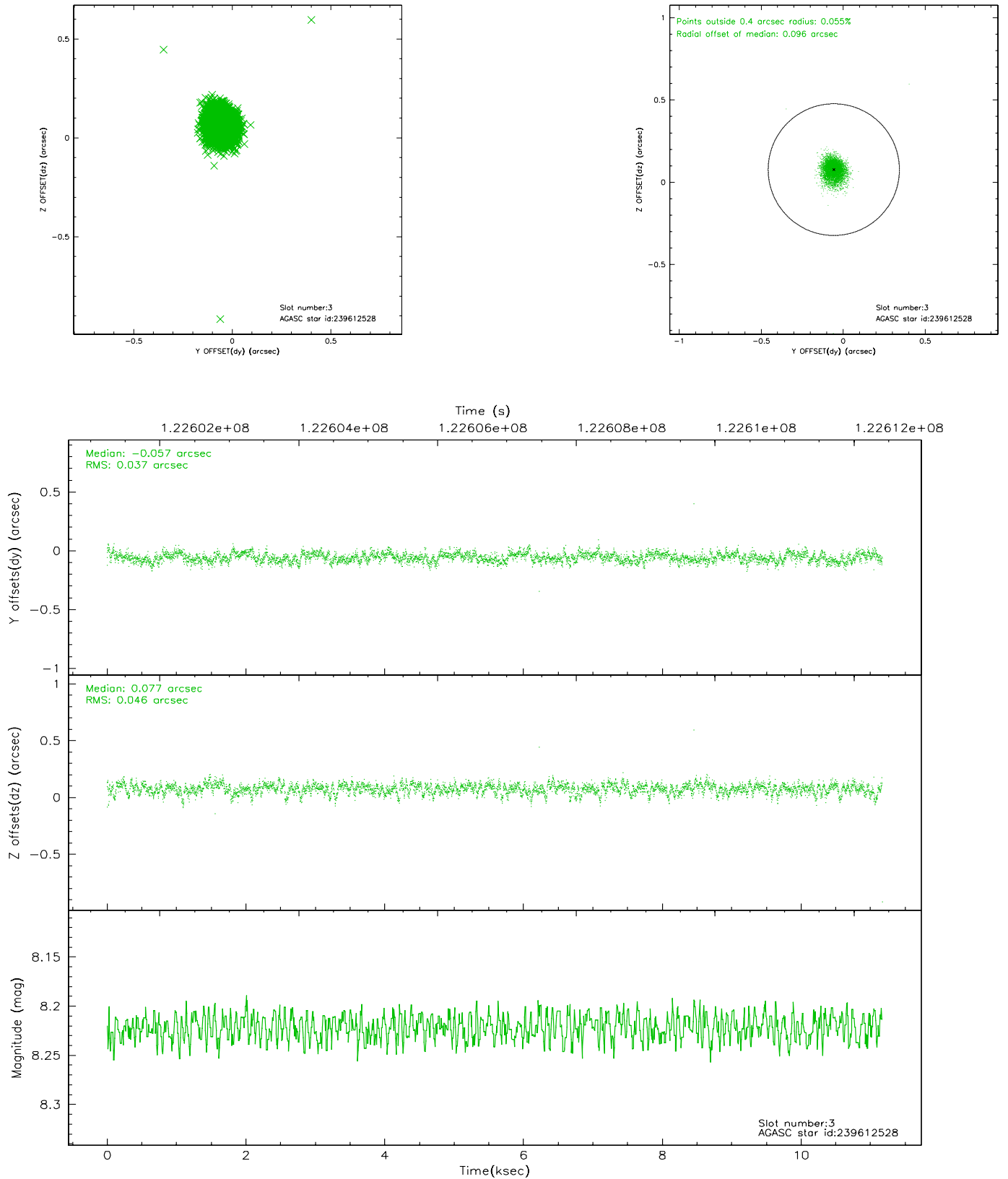


Slot Statistics

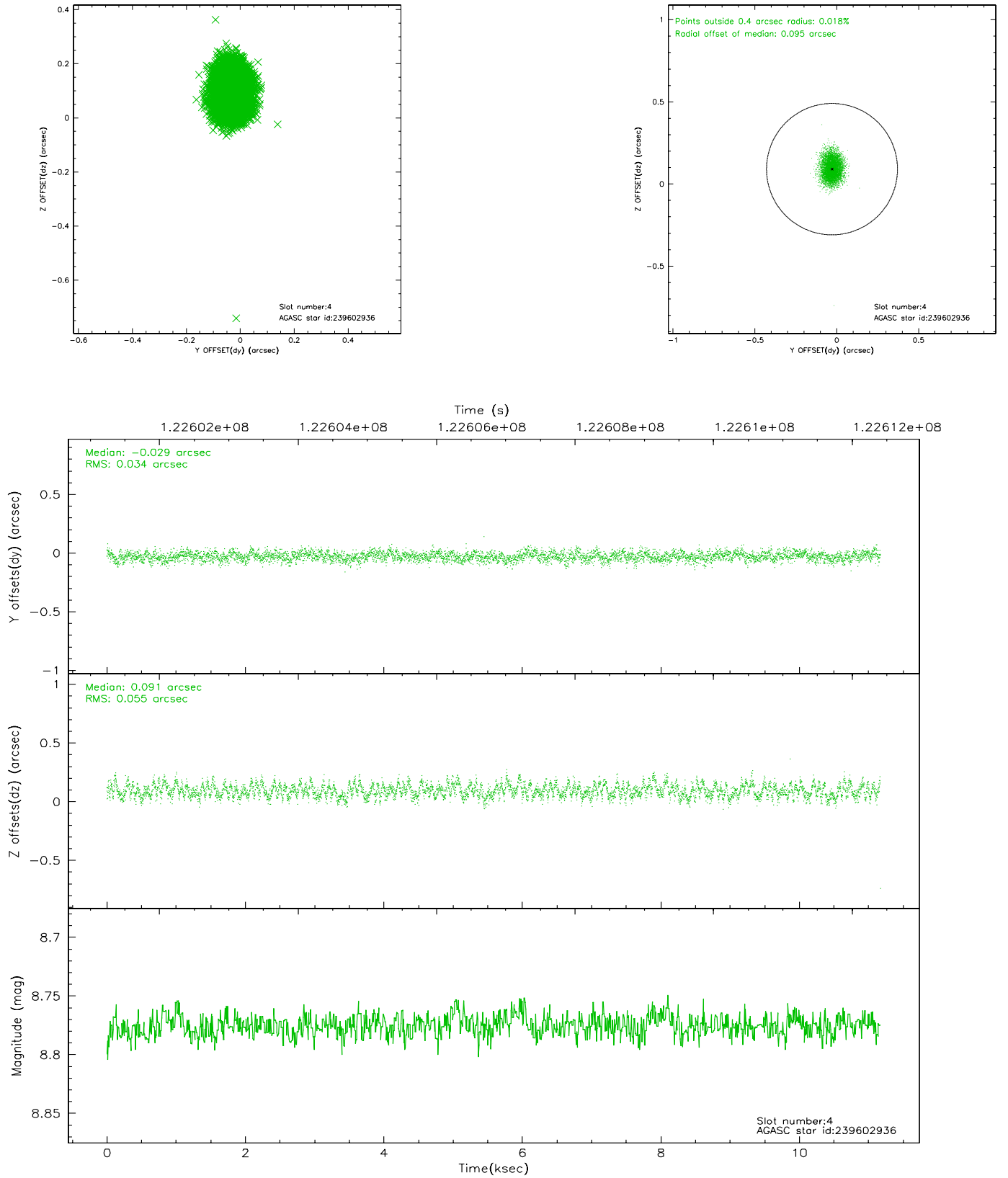
slot	status	id	mag	n_pts	med_dy	med_dz	dr1	dr2	ra	dec	mean_y	mean_z
0	FID	ACIS-S-2	7.11	2719	-0.007	0.036	0.008	0.013	0.000000	0.000000	-755.68	-1727.92
1	FID	ACIS-S-4	7.20	2719	-0.072	-0.006	0.006	0.011	0.000000	0.000000	2157.31	180.07
2	FID	ACIS-S-5	7.24	2719	0.047	-0.021	0.006	0.010	0.000000	0.000000	-1807.89	174.22
3	GUIDE	239612528	8.22	5450	-0.057	0.077	0.059	0.099	65.157445	28.892017	-222.56	-2235.88
4	GUIDE	239602936	8.78	5449	-0.029	0.091	0.068	0.109	65.403432	28.416154	-1994.24	-1604.01
5	GUIDE	238958096	9.29	5447	0.009	-0.151	0.106	0.167	64.612911	27.706711	-2076.44	1976.97
6	GUIDE	238958824	9.77	5444	0.075	-0.095	0.116	0.185	64.737810	27.958818	-1705.19	1058.86
7	GUIDE	239613168	8.40	5446	0.006	0.078	0.059	0.095	65.055525	28.814853	-198.47	-1811.61

2.4 Star Slots

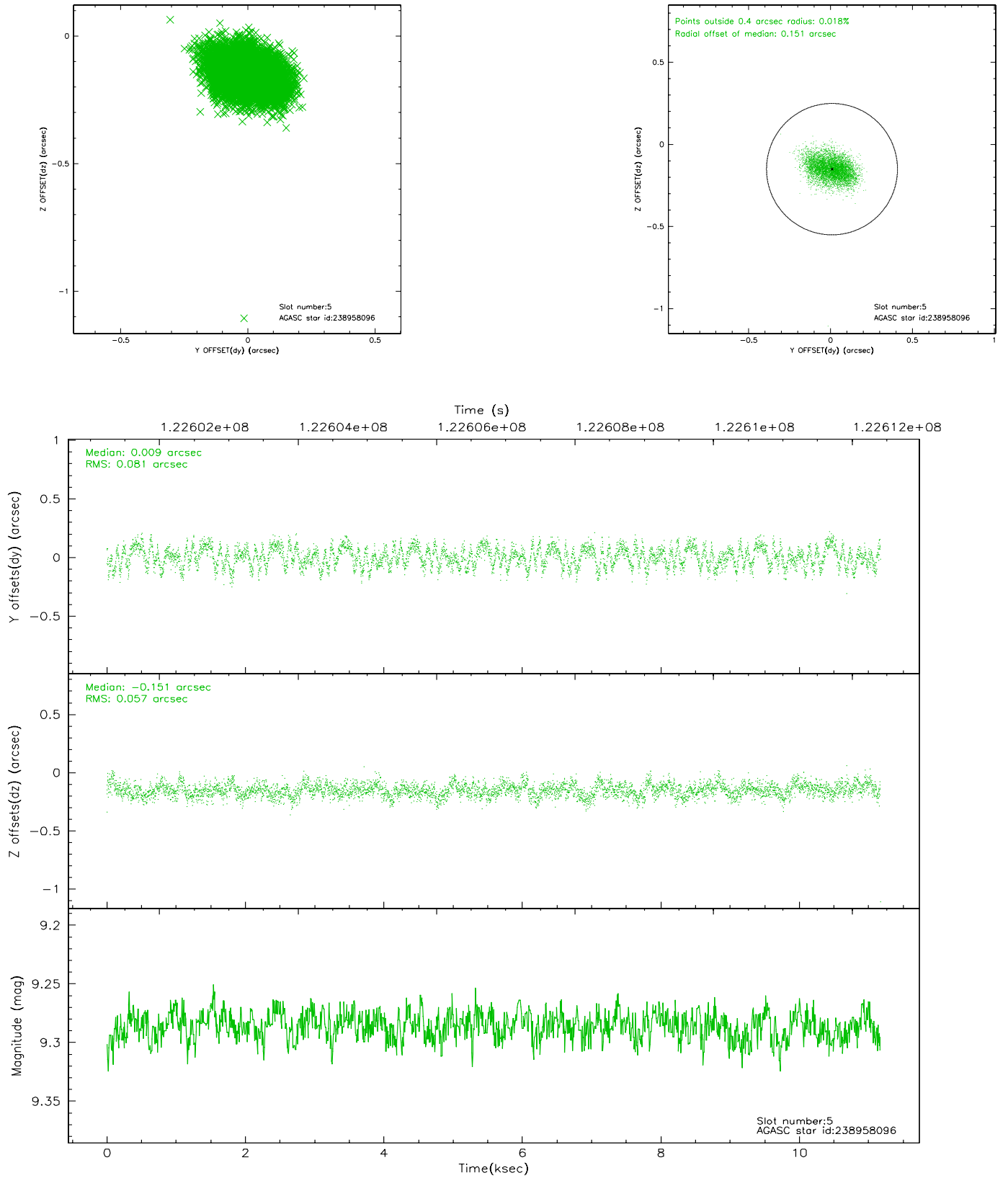
2.4.1 Slot 3



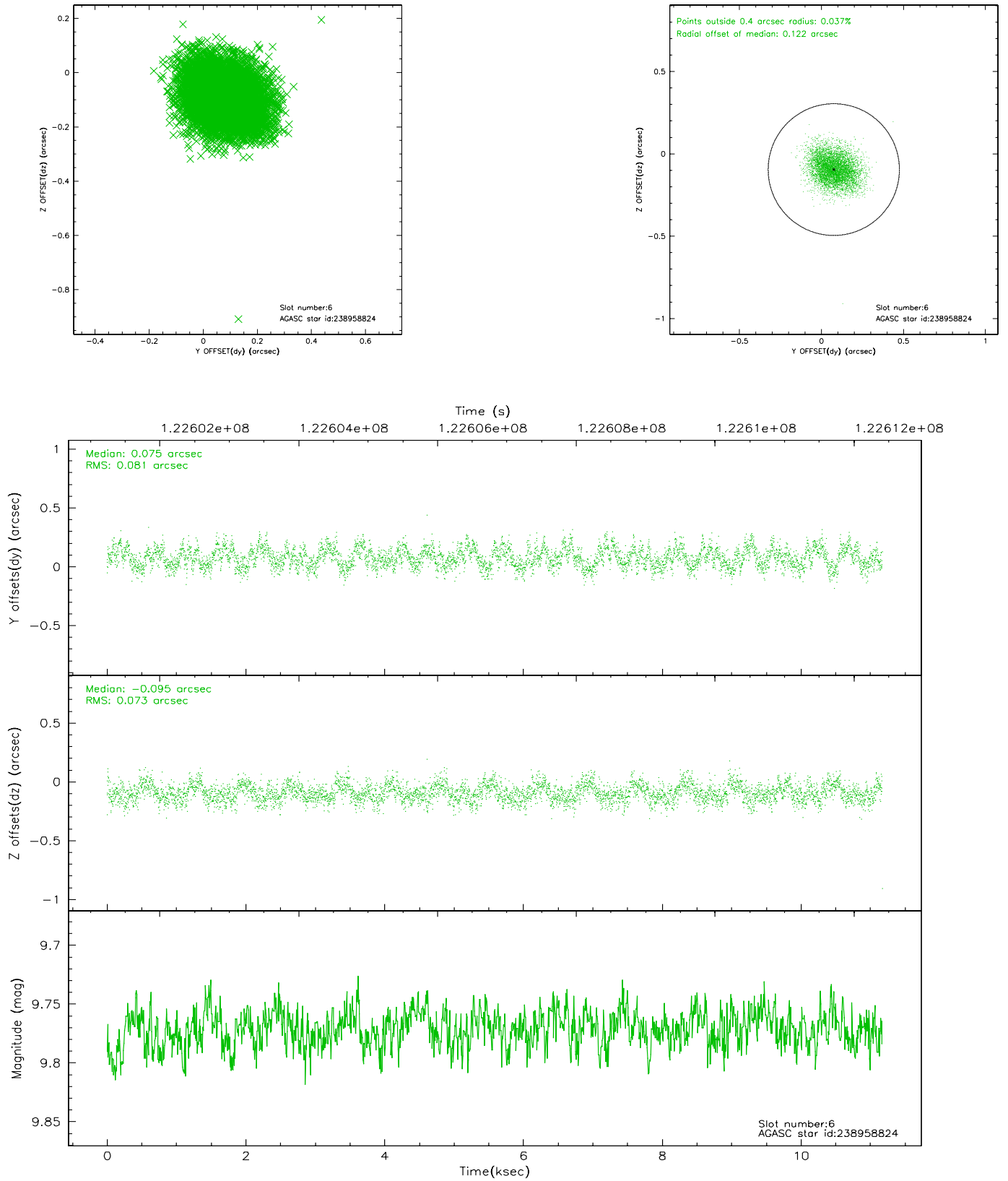
2.4.2 Slot 4



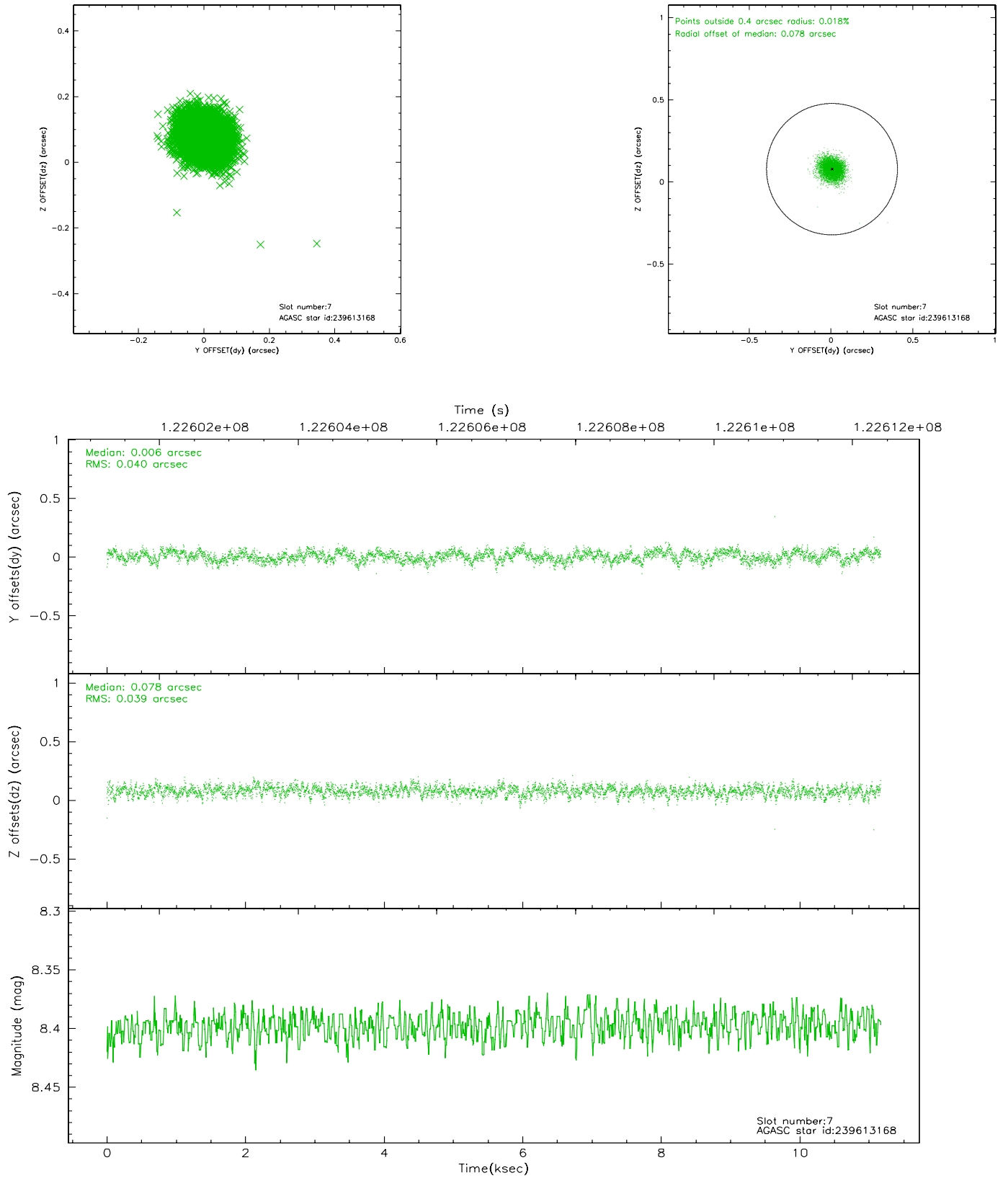
2.4.3 Slot 5



2.4.4 Slot 6

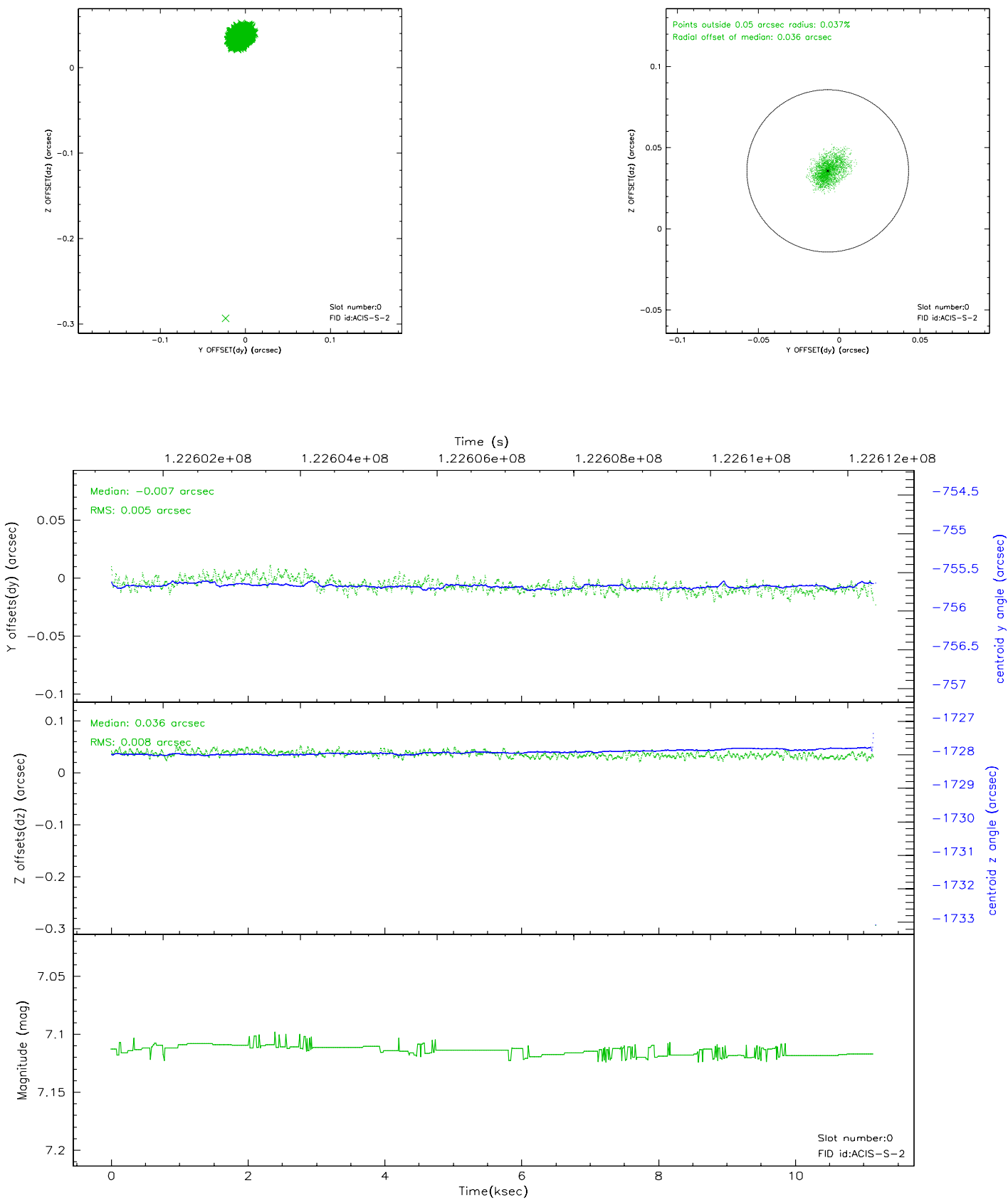


2.4.5 Slot 7

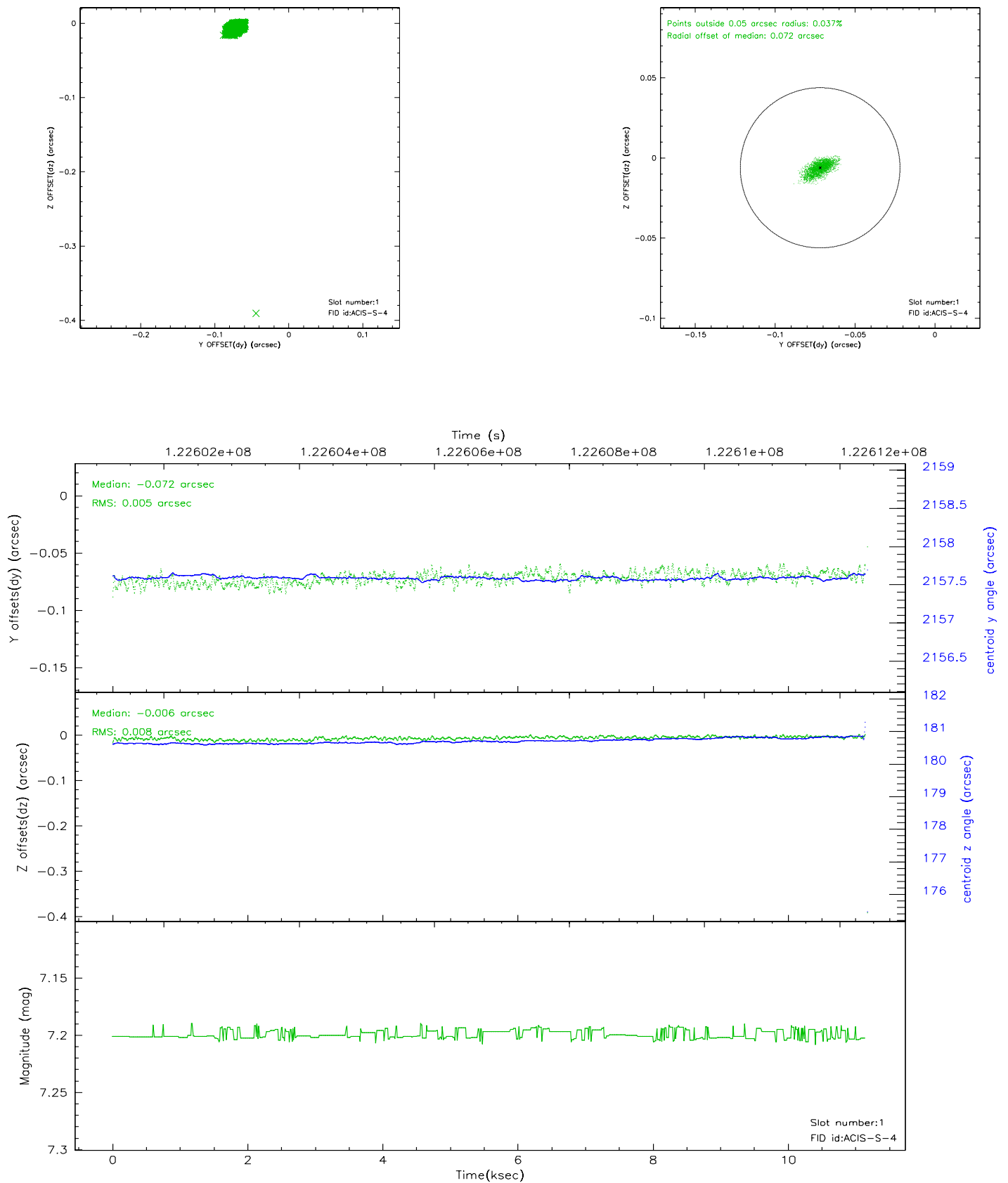


2.5 FID Slots

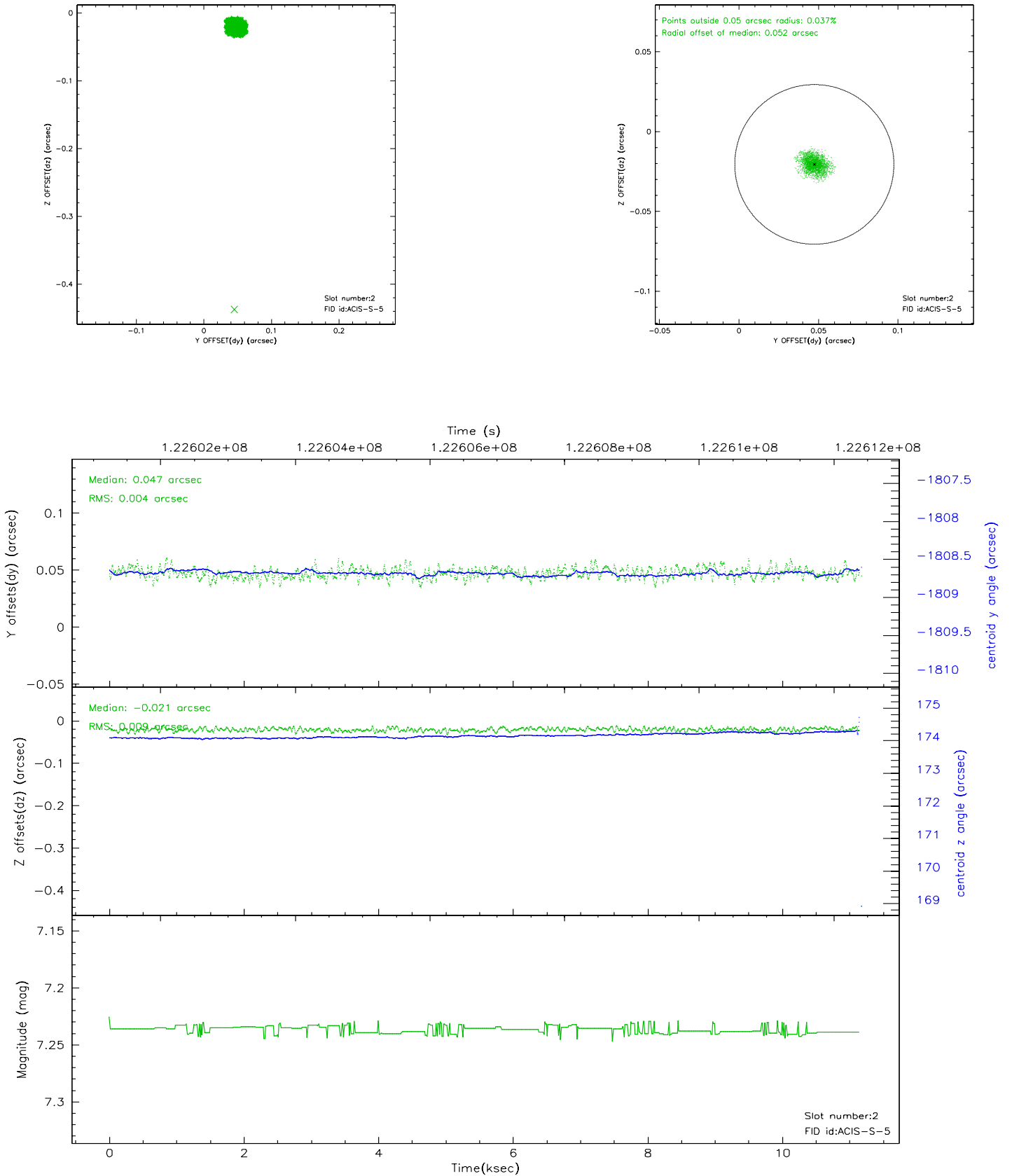
2.5.1 Slot 0



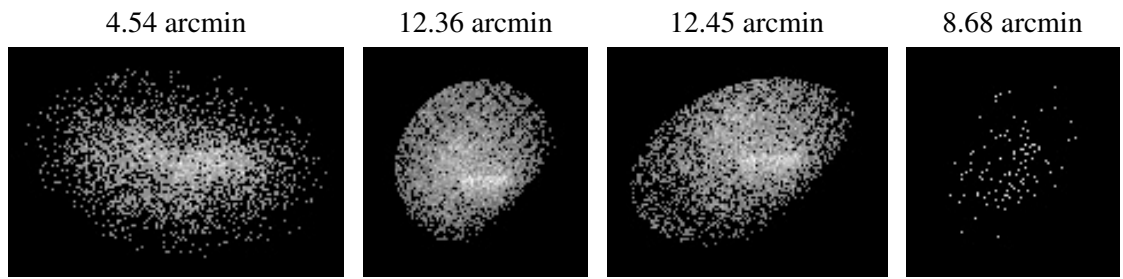
2.5.2 Slot 1



2.5.3 Slot 2



3 Point Sources



A Summary

A.1 Status

V&V Scientist	Beth Sundheim
V&V Date (YYYY-MM-DD)	2007.01.12
V&V Edition	1
V&V Disposition and Status	OK
V&V Charge Time	11.148

A.2 Comments

This observation was interrupted by safing of the science instruments due to high solar radiation environment. The observation was interrupted at 2001:324:02:58.