

V&V Reference Report

L2 ASCDS Version : 7.6.9

Observation 2539 - L2 Version 001
Chandra X-Ray Center

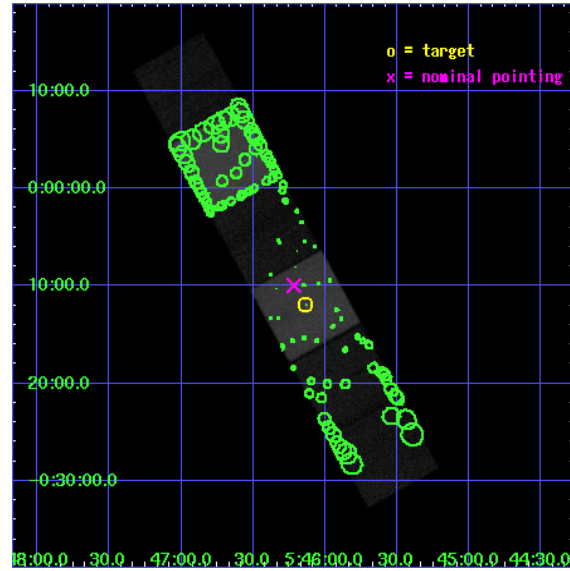
L2 Processing Date : Oct 9 2006

Contents

1	Front	2
2	OBI	3
2.1	OBI	3
2.1.1	Images	3
2.1.2	Bias	3
2.1.3	Parameters	4
2.1.4	Events	4
2.2	Compared Parameters	5
2.3	Aspect	6
2.4	Star Slots	9
2.4.1	Slot 3	9
2.4.2	Slot 4	10
2.4.3	Slot 5	11
2.4.4	Slot 6	12
2.4.5	Slot 7	13
2.5	FID Slots	14
2.5.1	Slot 0	14
2.5.2	Slot 1	15
2.5.3	Slot 2	16
3	Point Sources	17
A	Summary	18
A.1	Status	18
A.2	Comments	18

1 Front

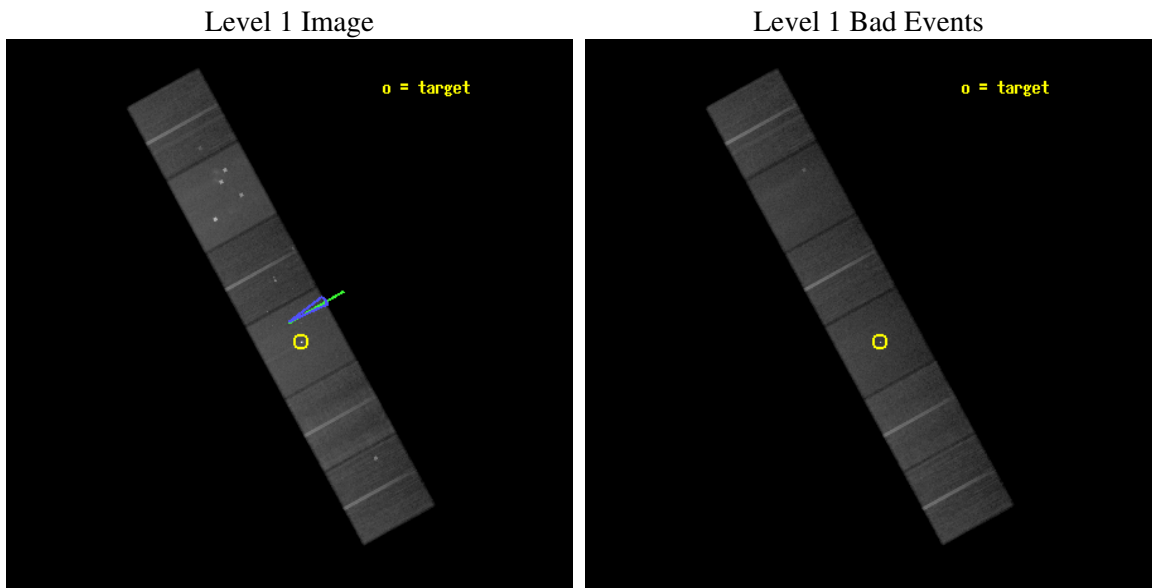
seq_num	200147
obs_id	2539
title	HARD X-RAY EMISSION FROM THE CLASS I AND CLASS 0 OUTFLOW SOURCES IN L1630
observer	Dr. Theodore Simon
object	HH 24-26
dtcycle	0
cycle	P
ra_targ	86.535
dec_targ	-0.197778
ra_nom	86.554547651504
dec_nom	-0.16588610211959
roll_nom	61.210735210145
revision	2
ontime	63647.999762893
livetime	62842.050465671
ontime4	63647.999762893
ontime5	63647.999762893
ontime6	63644.758772612
ontime7	63647.999762893
ontime8	63647.999762893
ontime9	63647.999762893
l2events	624191



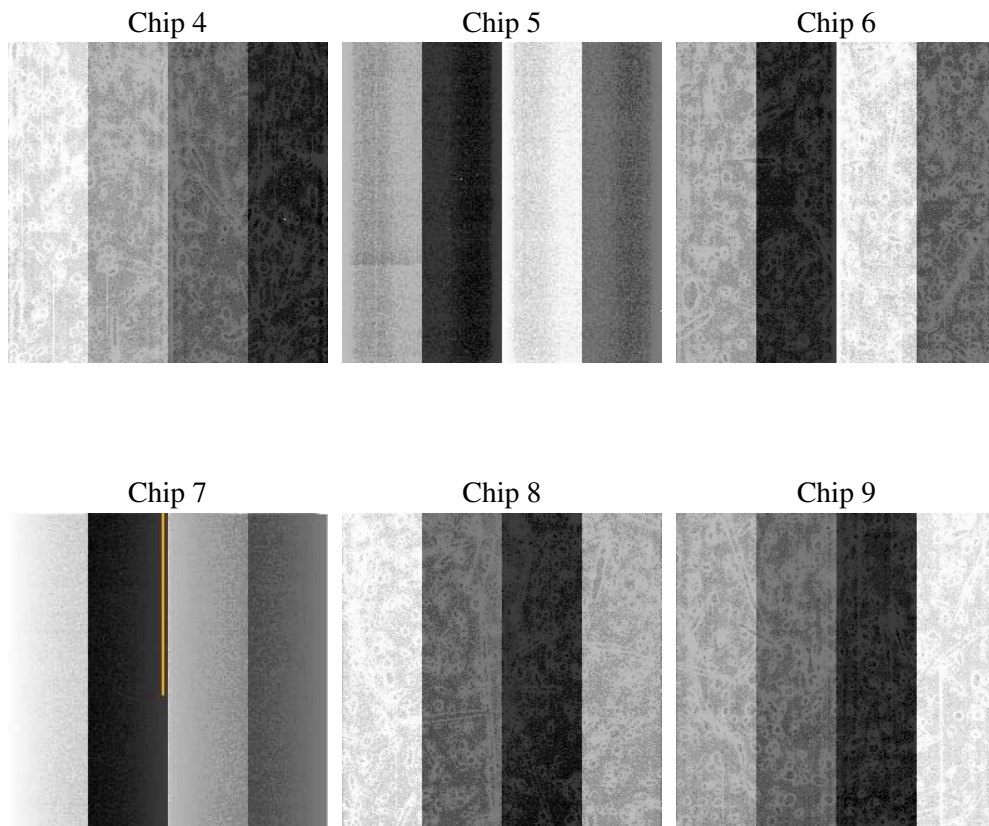
2 OBI

2.1 OBI

2.1.1 Images



2.1.2 Bias



2.1.3 Parameters

obi_num	1
ascdsver	7.6.9
caldsver	3.2.3
date	2006-10-09T17:07:05
revision	2

sched_exp_time	63721.035000
ontime	63653.404848635
ontime4	63653.404848635
ontime5	63653.404848635
ontime6	63650.163858354
ontime7	63653.404848635
ontime8	63653.404848635
ontime9	63653.404848635
l1events	2887433

2.1.4 Events

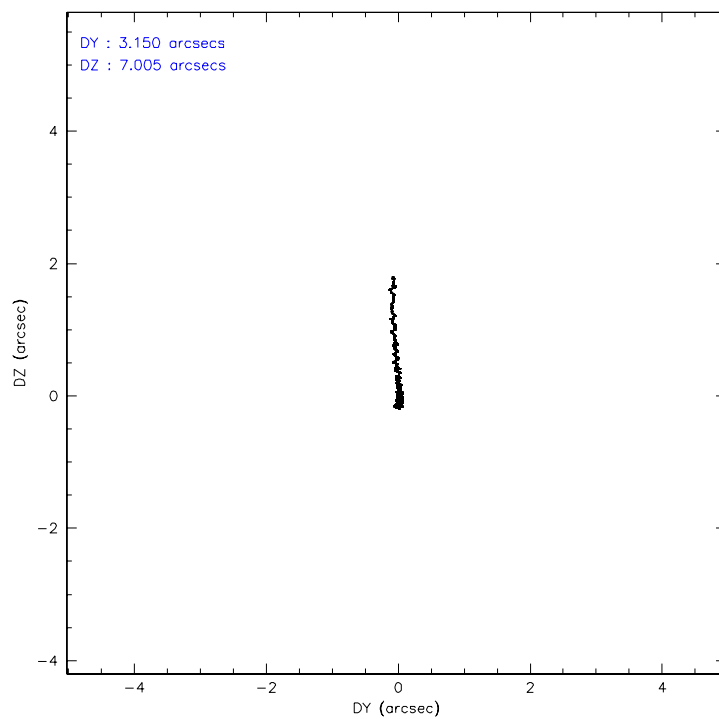
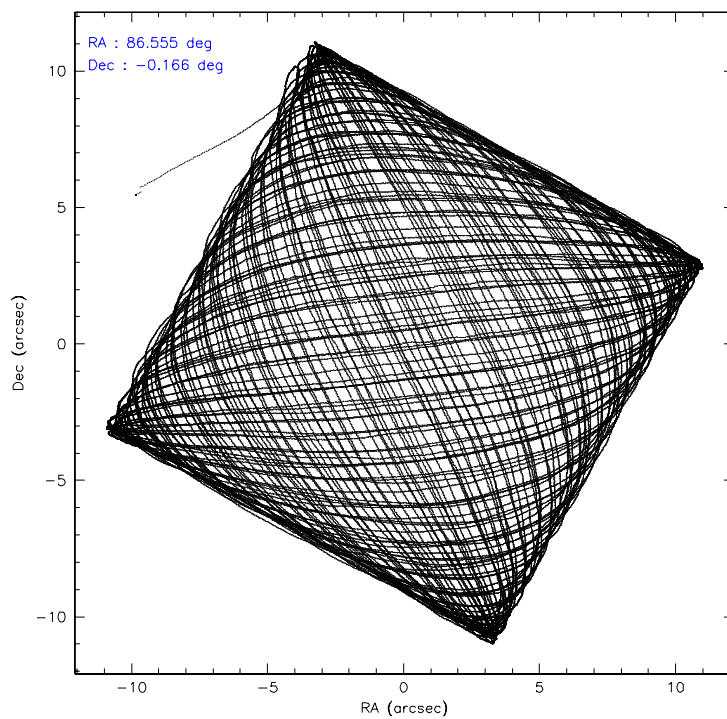
	ccd 4	ccd 5	ccd 6	ccd 7	ccd 8	ccd 9
level 1 events	432611	602481	399922	544293	506432	401694
rejected events	382018	319709	350680	327005	401225	351337
rejected %	88%	53%	87%	60%	79%	87%

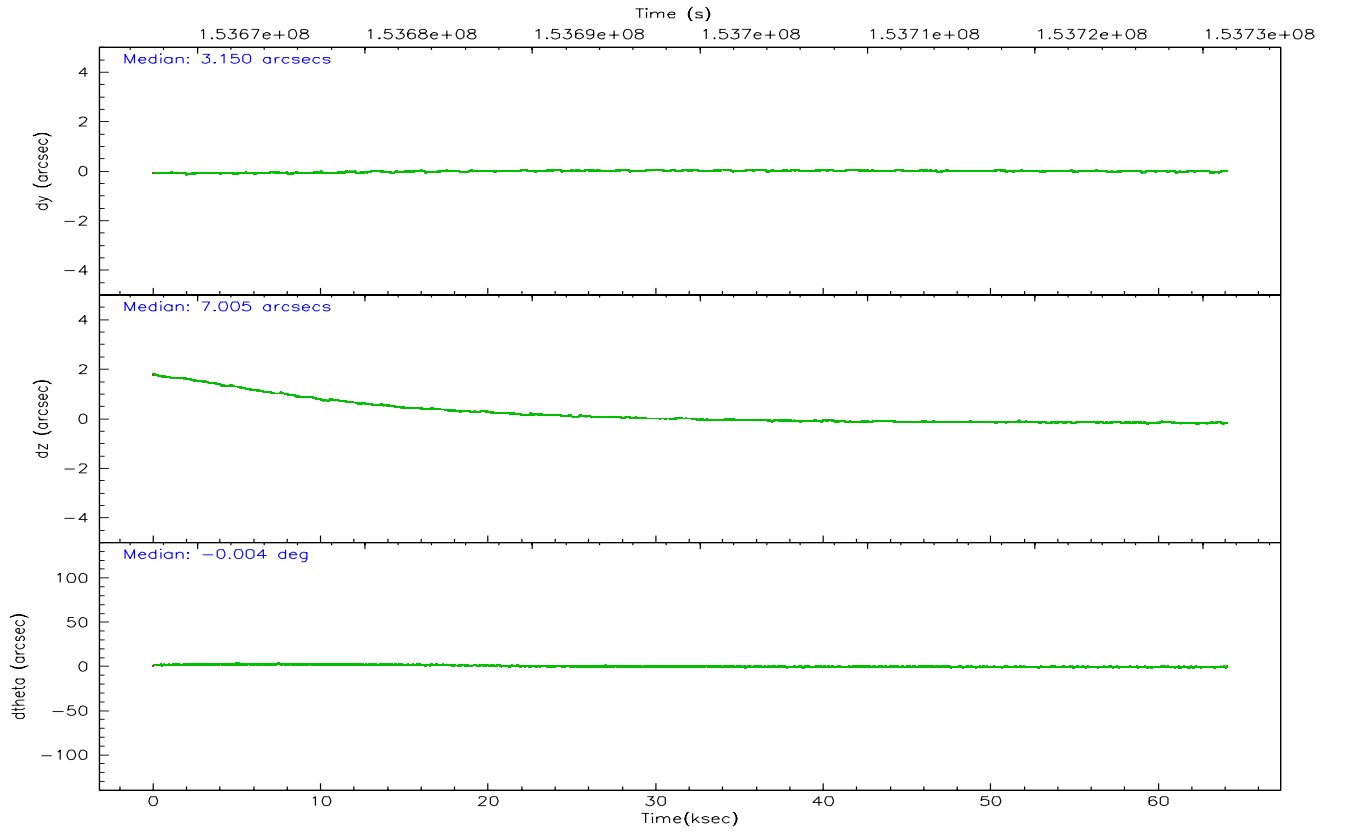
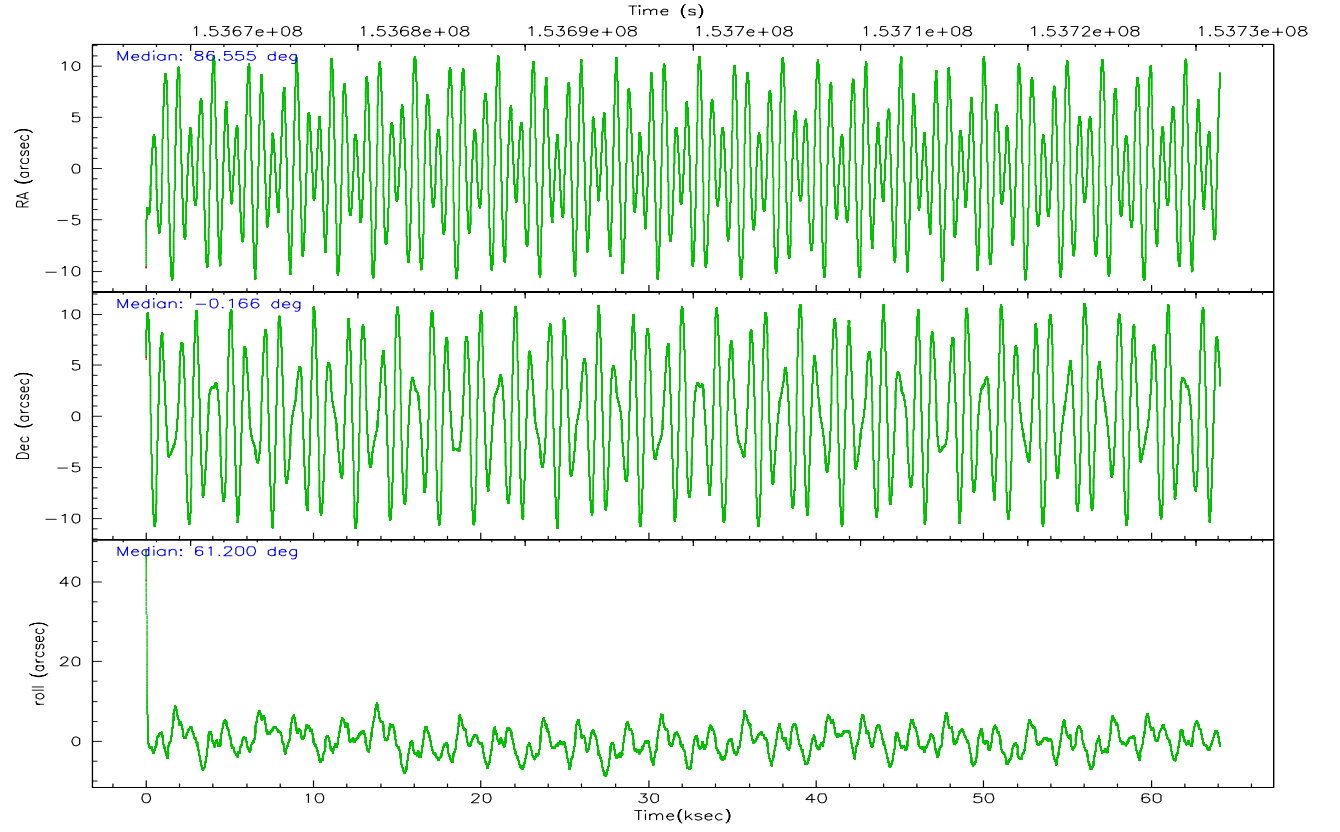
	ccd 4	ccd 5	ccd 6	ccd 7	ccd 8	ccd 9
grade 0 events	23181	42906	20773	15713	33941	22637
	5%	7%	5%	2%	6%	5%
grade 1 events	353	397	179	715	310	219
	0%	0%	0%	0%	0%	0%
grade 2 events	10149	83392	9760	54320	22519	9051
	2%	13%	2%	9%	4%	2%
grade 3 events	4986	6223	4677	12074	11150	4891
	1%	1%	1%	2%	2%	1%
grade 4 events	4822	5891	4539	11988	10417	4670
	1%	0%	1%	2%	2%	1%
grade 5 events	16466	28331	17777	37022	23488	18865
	3%	4%	4%	6%	4%	4%
grade 6 events	7456	144378	9495	123200	27184	9113
	1%	23%	2%	22%	5%	2%
grade 7 events	365198	290963	332722	289261	377423	332248
	84%	48%	83%	53%	74%	82%

2.2 Compared Parameters

Parameter	Planned	Actual	Parameter	Planned	Actual
Instrument	ACIS	ACIS	Obspar format version number	6	6
Detector	ACIS-456789	ACIS-456789	Obspar file type	PREDICTED	ACTUAL
Grating	NONE	NONE	Obspar update status	NONE	UPDATED
Data mode	FAINT	FAINT	Number of optional ACIS chips dropped	0	0
Observation mode	POINTING	POINTING	On-chip summing requested	N	N
Pointing RA	86.555491	86.55454765150405	Subarray requested	NONE	NONE
Pointing Dec	-0.193112	-0.1658861021195913	Alternating exposures requested	N	N
Pointing Roll	61.054100	61.21073521014526	Primary exposure time	0.000000	3.2
Roll angle	60.000000	60.000000			
Roll tolerance	6.000000	6.000000			
Roll constraint allows 180D rotation	N	N			
SIM focus pos (mm)	-0.684267	-0.6828225247311905			
SIM defocus (mm)	0	0.001444936568705701			
SIM translation stage pos (mm)	-190.132523	-190.1425803651734			
SIM translation stage offset (mm)	0	0.01005778216563158			
Observation start time	153667753.184000	153666674.67131			
Observation start date	2002-11-14T13:28:09	2002-11-14T13:11:14			
Observation end time	153731474.184000	153732527.33655			
Observation end date	2002-11-15T07:10:10	2002-11-15T07:28:47			
Read mode	TIMED	TIMED			

2.3 Aspect



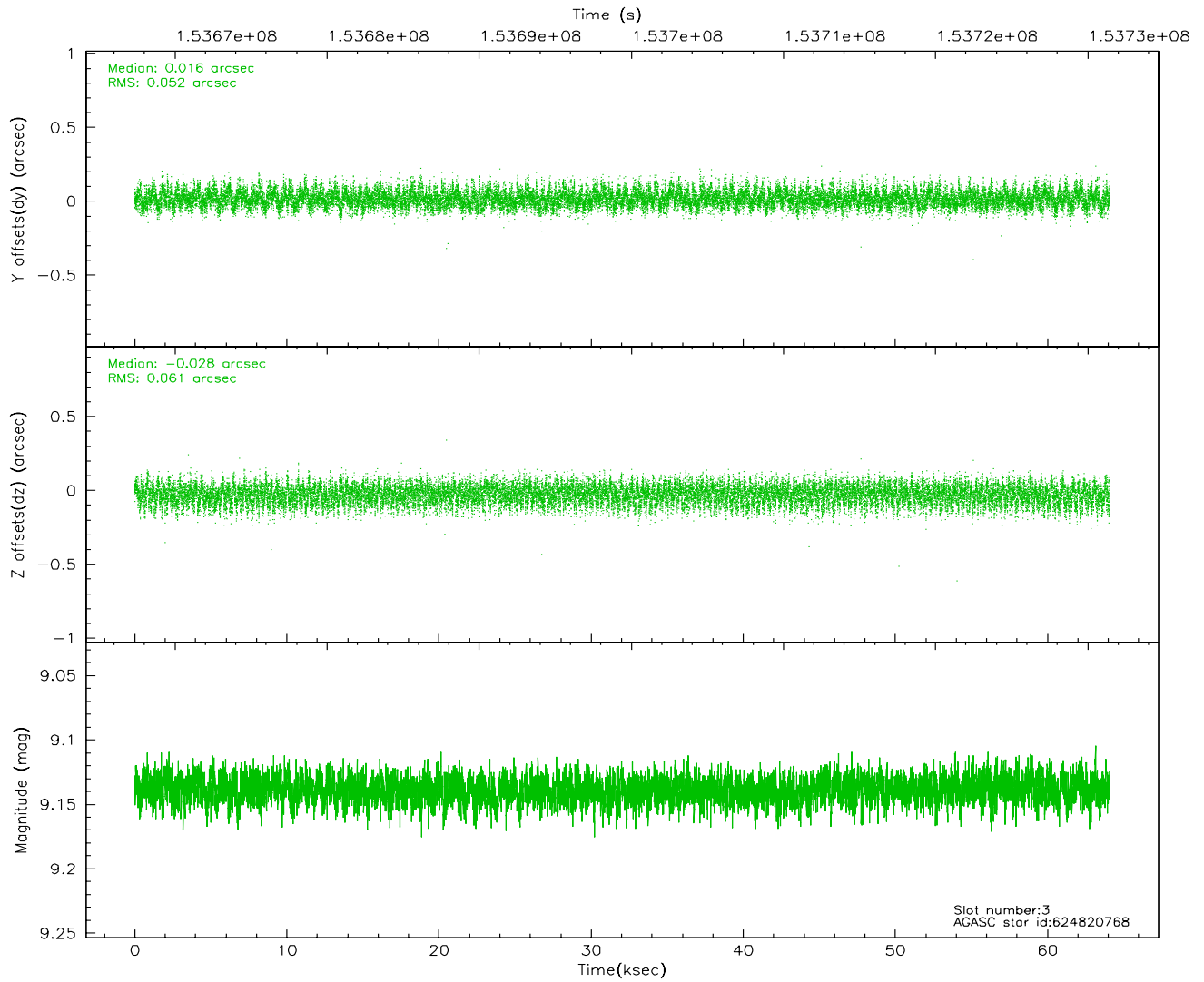
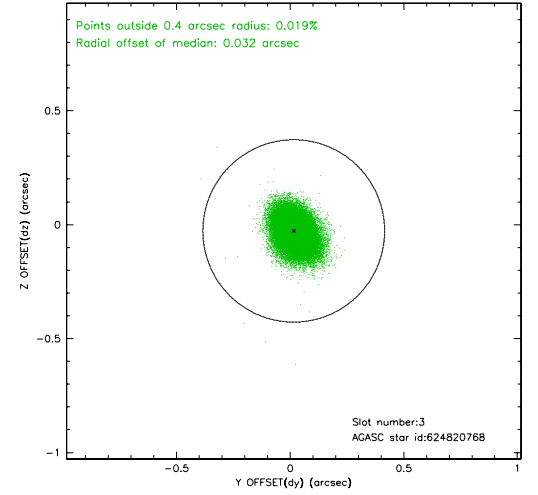
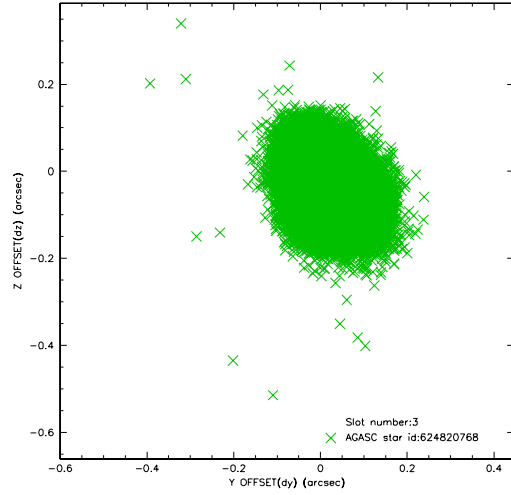


Slot Statistics

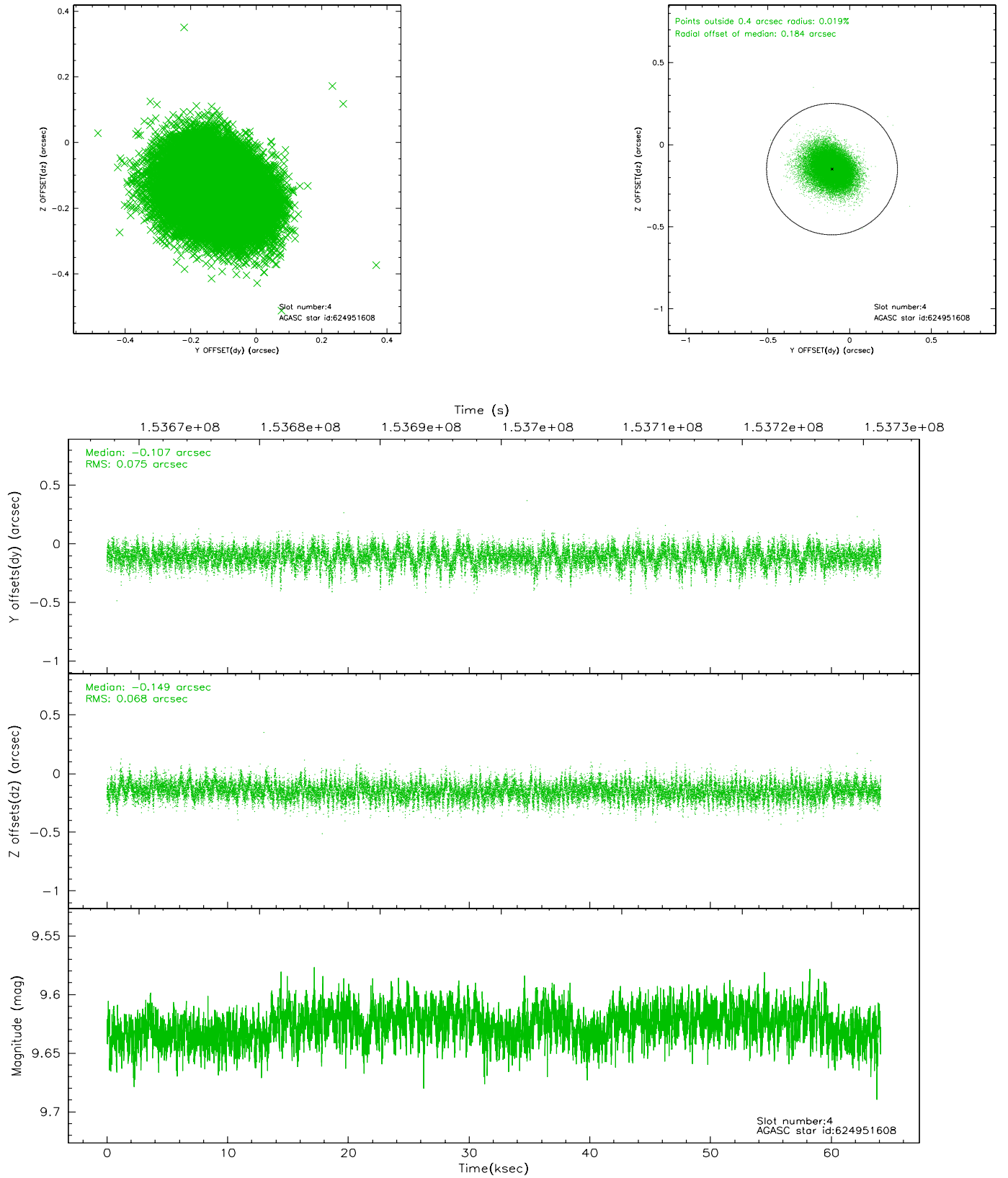
slot	status	id	mag	n_pts	med_dy	med_dz	dr1	dr2	ra	dec	mean_y	mean_z
0	FID	ACIS-S-2	7.12	15636	-0.010	0.020	0.010	0.016	0.000000	0.000000	-755.79	-1728.35
1	FID	ACIS-S-4	7.20	15637	-0.034	-0.001	0.007	0.014	0.000000	0.000000	2157.48	180.18
2	FID	ACIS-S-5	7.24	15637	0.013	-0.011	0.008	0.014	0.000000	0.000000	-1808.68	173.76
3	GUIDE	624820768	9.14	31254	0.016	-0.028	0.085	0.139	86.202480	-0.061953	-202.60	1340.89
4	GUIDE	624951608	9.63	31092	-0.107	-0.149	0.107	0.178	86.354222	-0.045842	112.52	890.89
5	GUIDE	624954400	9.16	31263	0.081	0.068	0.086	0.161	86.607838	-0.762568	-1702.92	-1156.99
6	GUIDE	624954504	9.64	31258	0.024	-0.002	0.089	0.144	86.731350	-0.894009	-1901.85	-1775.26
7	GUIDE	624955288	9.59	31259	-0.013	0.116	0.125	0.195	87.070368	-0.669957	-605.28	-2452.47

2.4 Star Slots

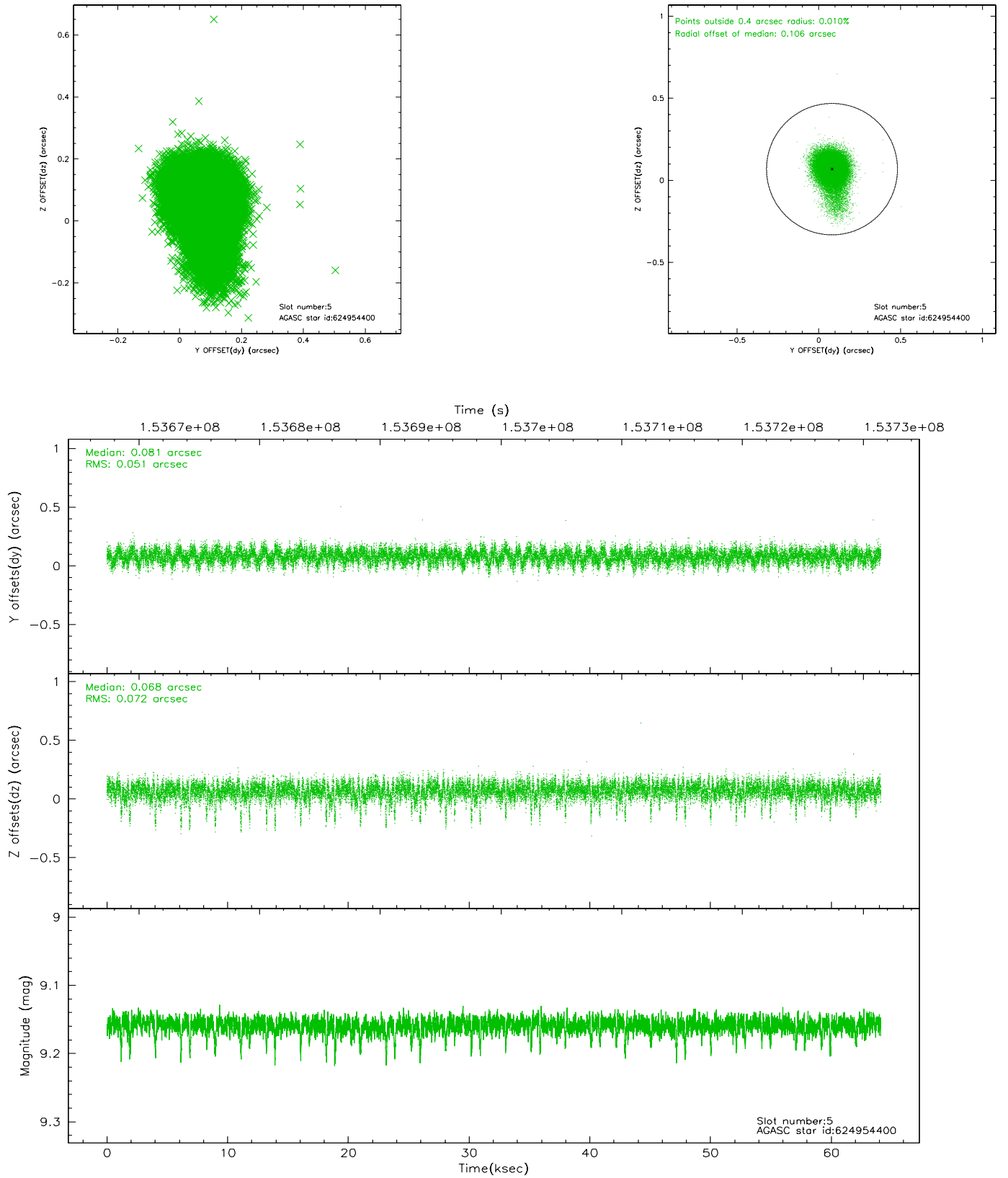
2.4.1 Slot 3



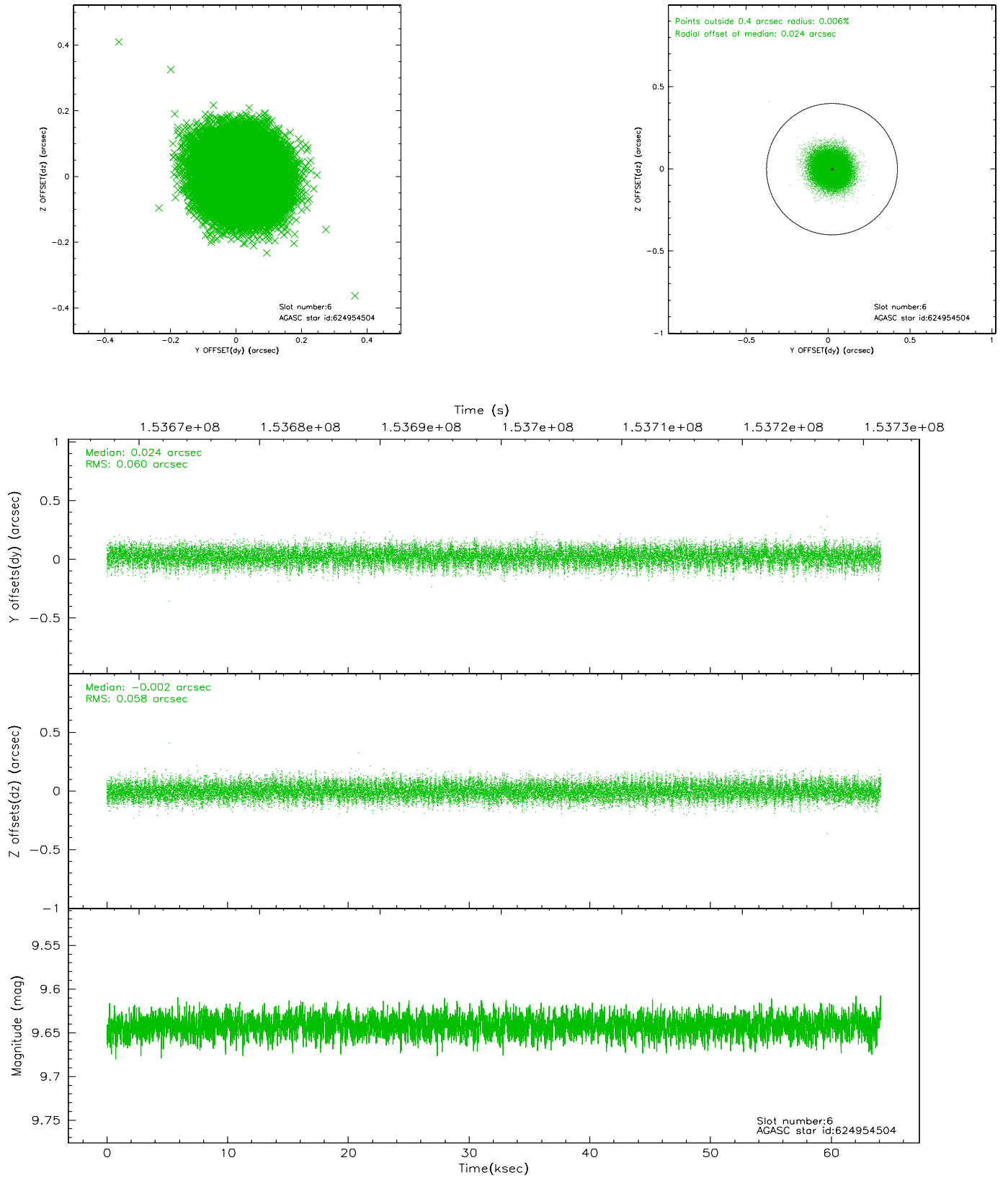
2.4.2 Slot 4



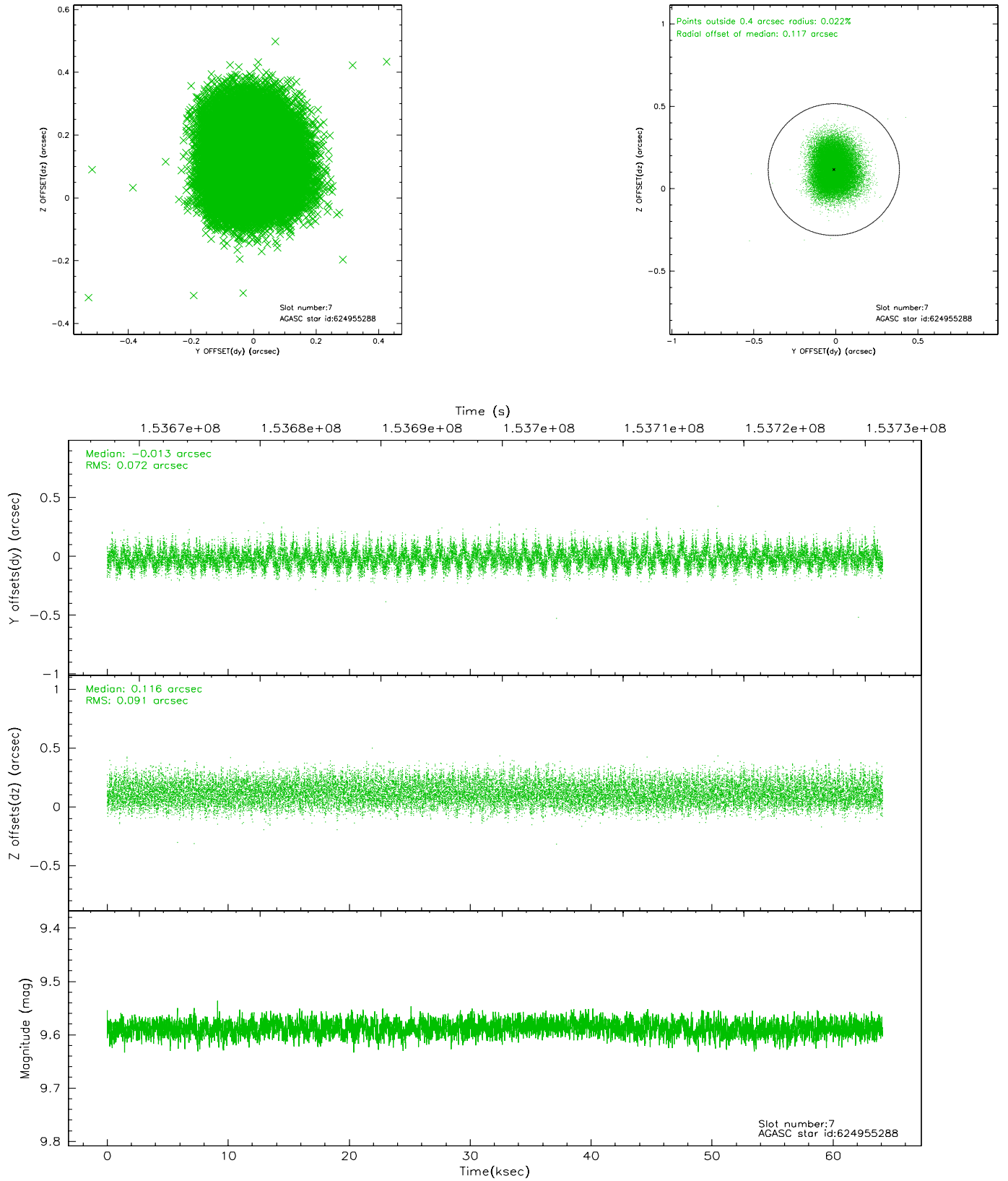
2.4.3 Slot 5



2.4.4 Slot 6

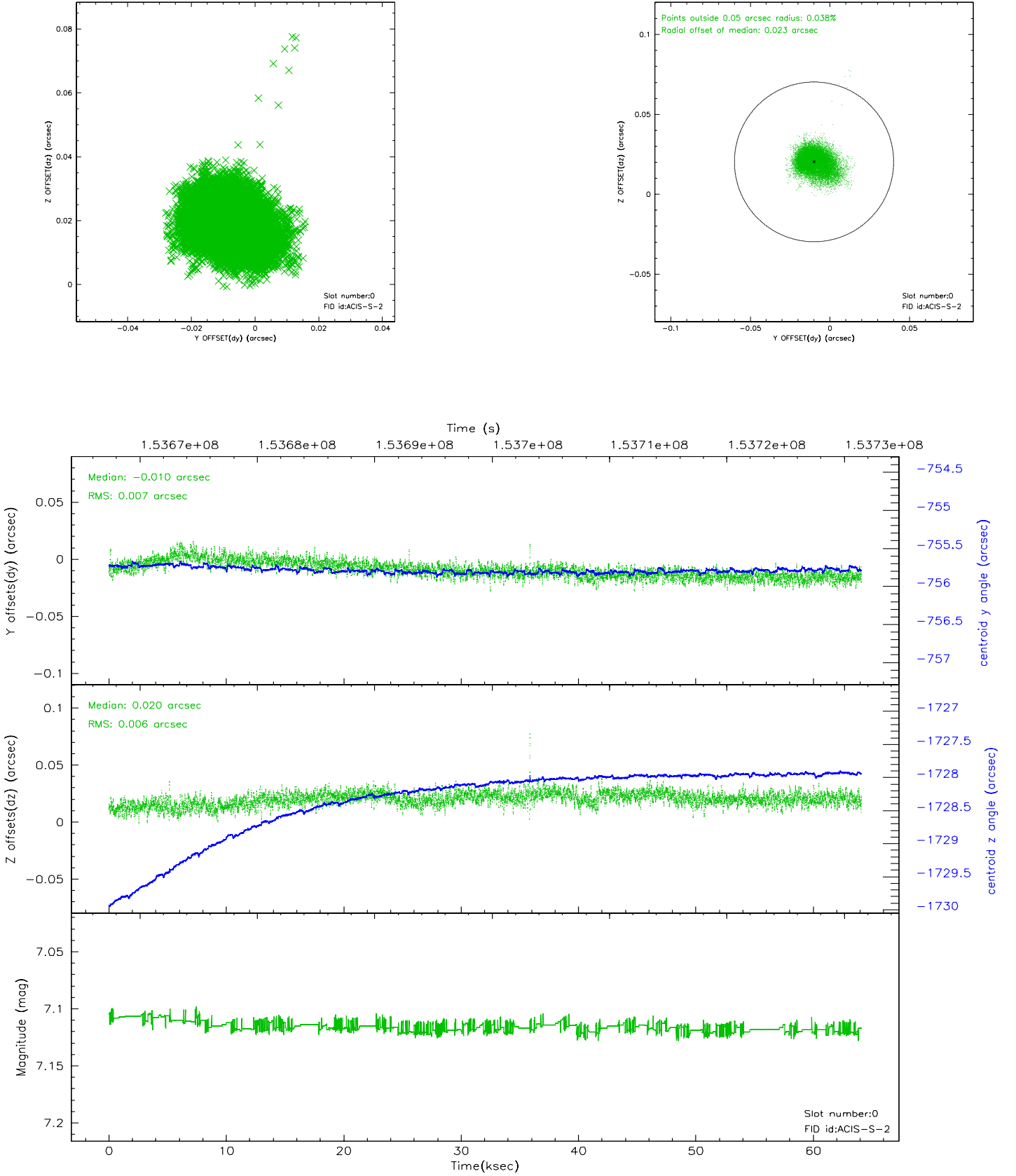


2.4.5 Slot 7

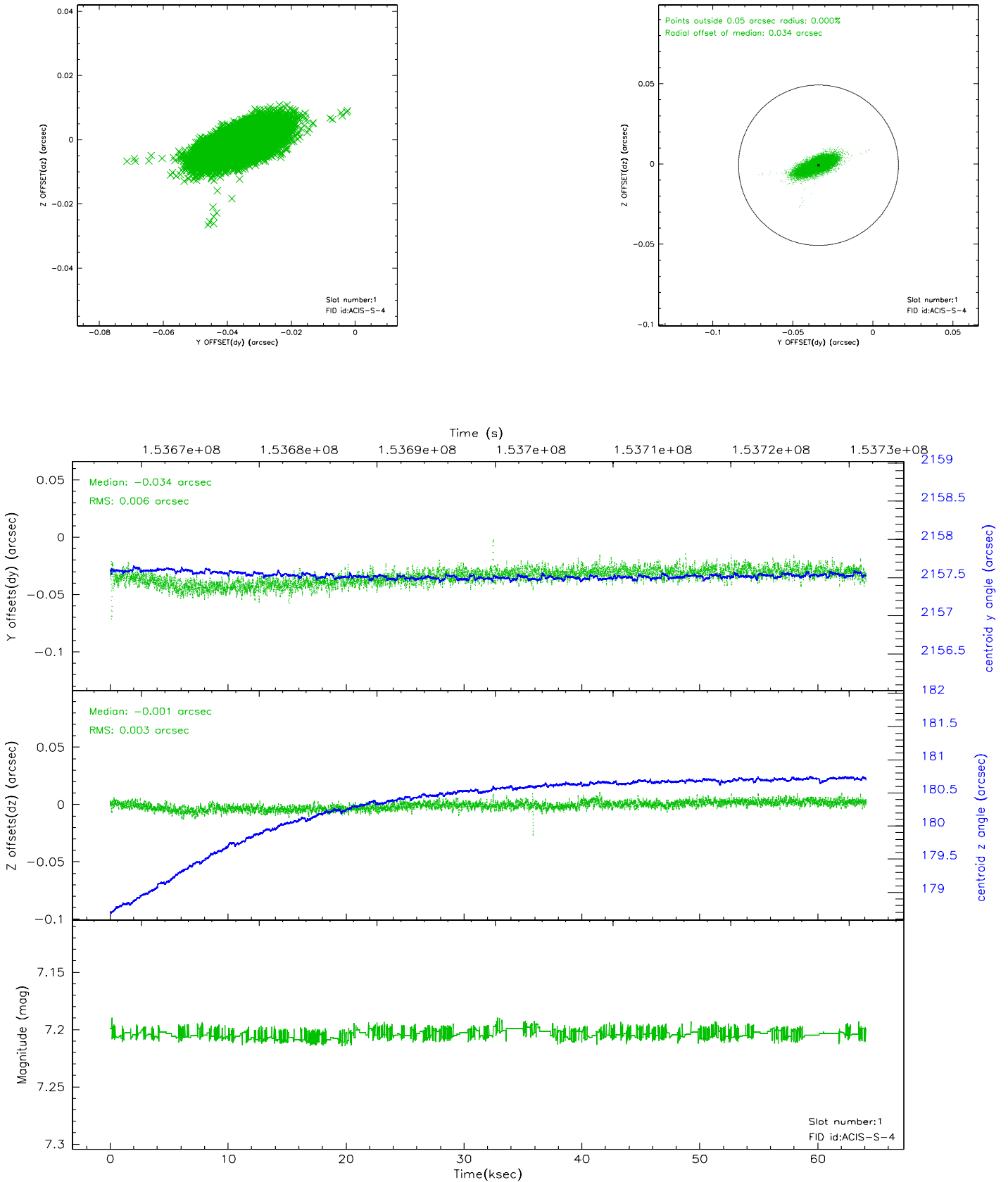


2.5 FID Slots

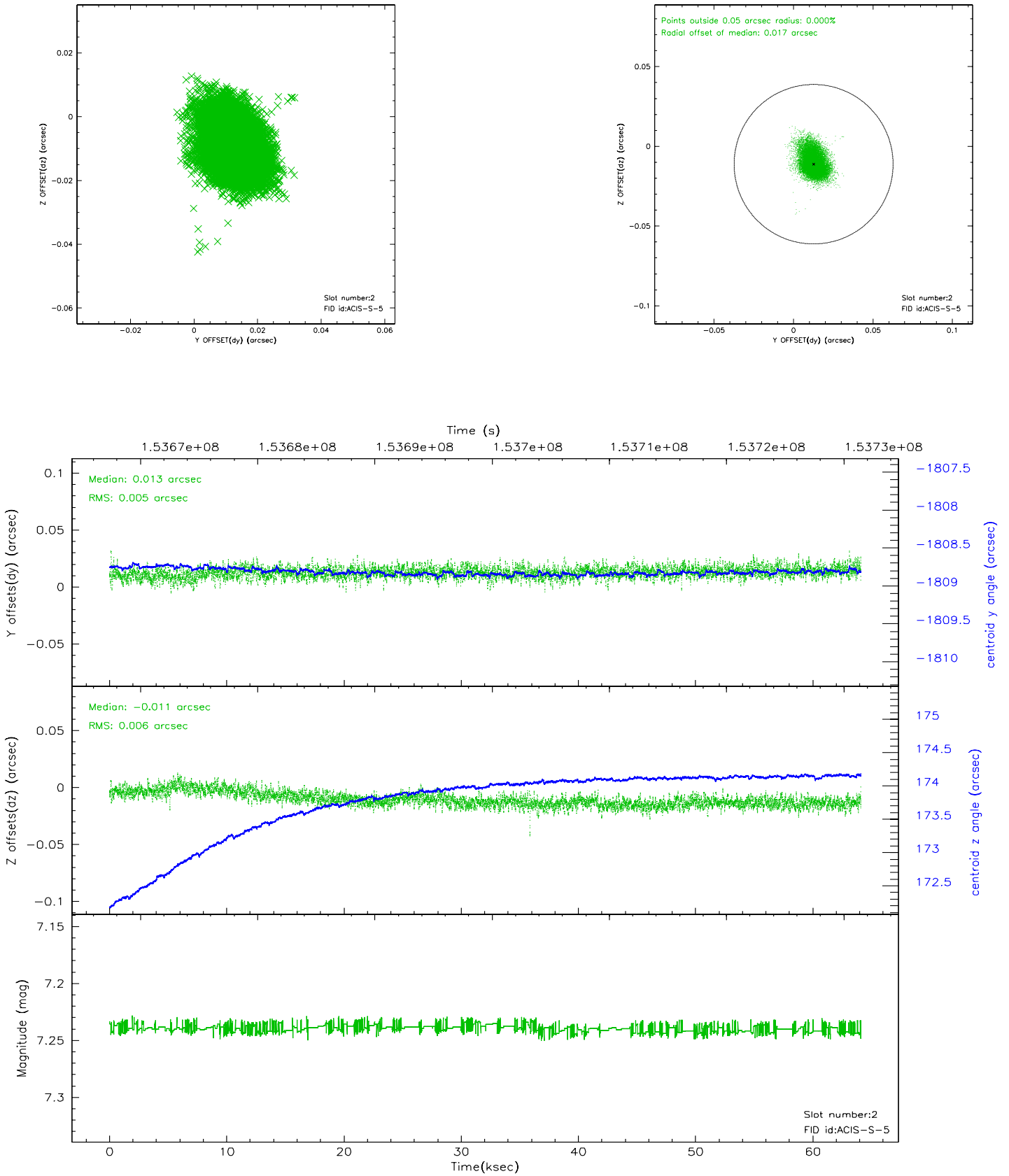
2.5.1 Slot 0



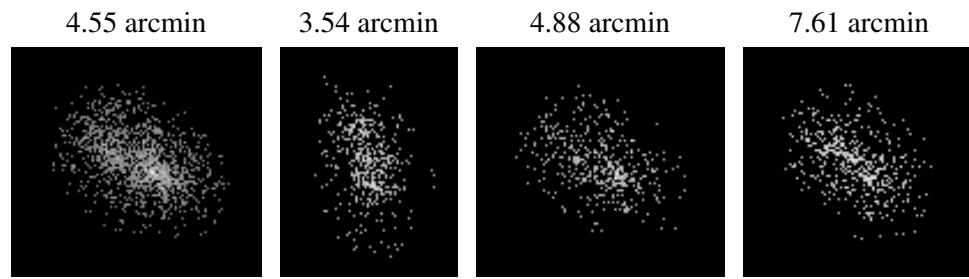
2.5.2 Slot 1



2.5.3 Slot 2



3 Point Sources



A Summary

A.1 Status

V&V Scientist	Beth Sundheim
V&V Date (YYYY-MM-DD)	2006.10.10
V&V Edition	1
V&V Disposition and Status	OK
V&V Charge Time	63.641

A.2 Comments

Roll constraint OK.