

V&V Reference Report

L2 ASCDS Version : 7.6.8.1

Observation 3453 - L2 Version 001
Chandra X-Ray Center

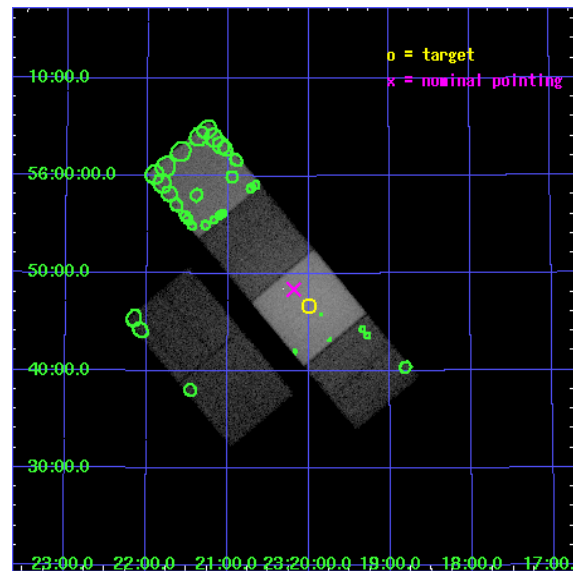
L2 Processing Date : Sep 11 2006

Contents

1	Front	2
2	OBI	3
2.1	OBI	3
2.1.1	Images	3
2.1.2	Bias	3
2.1.3	Parameters	4
2.1.4	Events	4
2.2	Compared Parameters	5
2.3	Aspect	6
2.4	Star Slots	9
2.4.1	Slot 3	9
2.4.2	Slot 4	10
2.4.3	Slot 5	11
2.4.4	Slot 6	12
2.4.5	Slot 7	13
2.5	FID Slots	14
2.5.1	Slot 0	14
2.5.2	Slot 1	15
2.5.3	Slot 2	16
3	Point Sources	17
A	Summary	18
A.1	Status	18
A.2	Comments	18

1 Front

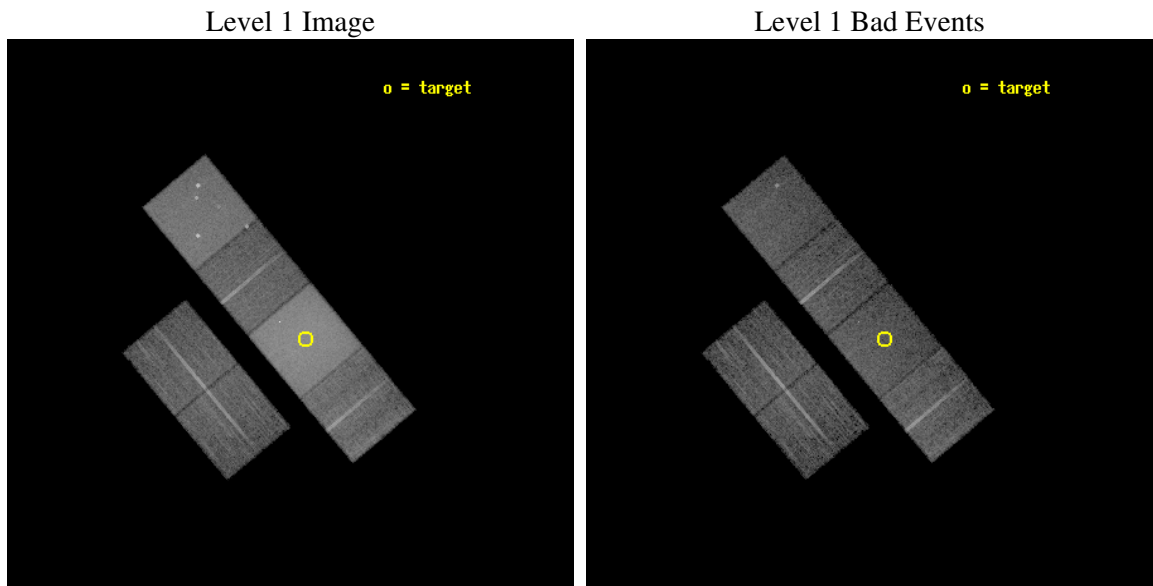
seq_num	100034
obs_id	3453
title	SPECTROSCOPIC IMAGING OF CHARGE EXCHANGE X-RAY EMISSION FROM COMET C/2002 C1
observer	Dr. Konrad Dennerl
object	C/2002 C1
dtcycle	0
cycle	P
ra_targ	350.0009
dec_targ	55.77887
ra_nom	350.04596623969
dec_nom	55.806426925197
roll_nom	50.119353353007
revision	2
ontime	11961.59995544
livetime	11810.134974393
ontime2	11958.358965248
ontime3	11958.358995169
ontime5	11961.59995544
ontime6	11961.59995544
ontime7	11961.59995544
ontime8	11961.59995544
l2events	303437



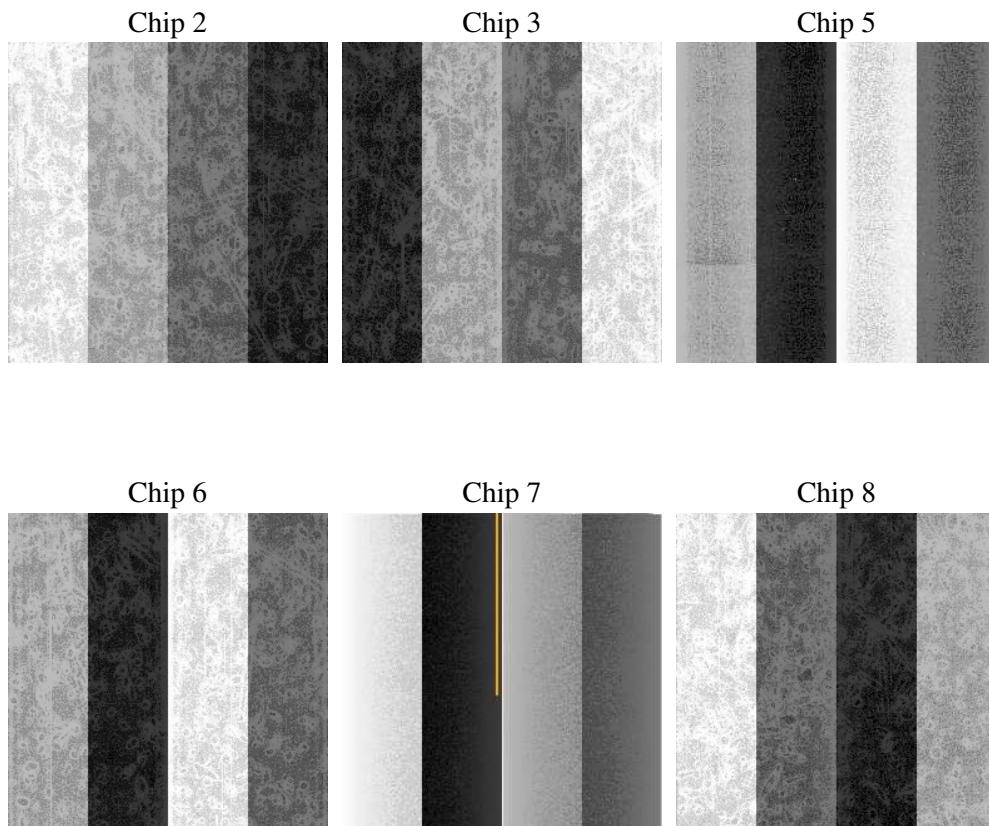
2 OBI

2.1 OBI

2.1.1 Images



2.1.2 Bias



2.1.3 Parameters

obi_num	0
ascdsver	7.6.8.1
caldbver	3.2.3
date	2006-09-11T06:26:50
revision	2

sched_exp_time	12000.000000
ontime	11965.765516758
ontime2	11962.524496645
ontime3	11962.524526566
ontime5	11965.765516758
ontime6	11965.765486836
ontime7	11965.765516758
ontime8	11965.765486836
l1events	736797

2.1.4 Events

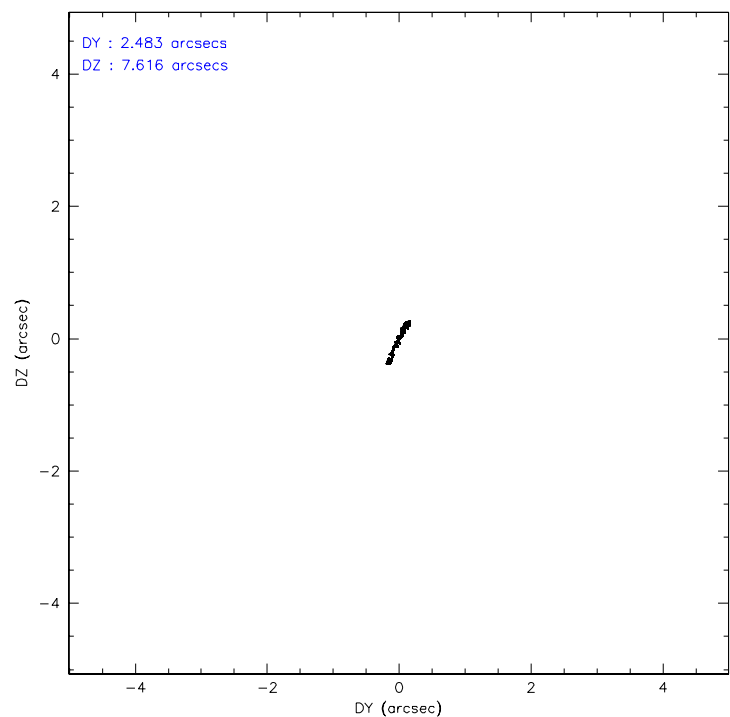
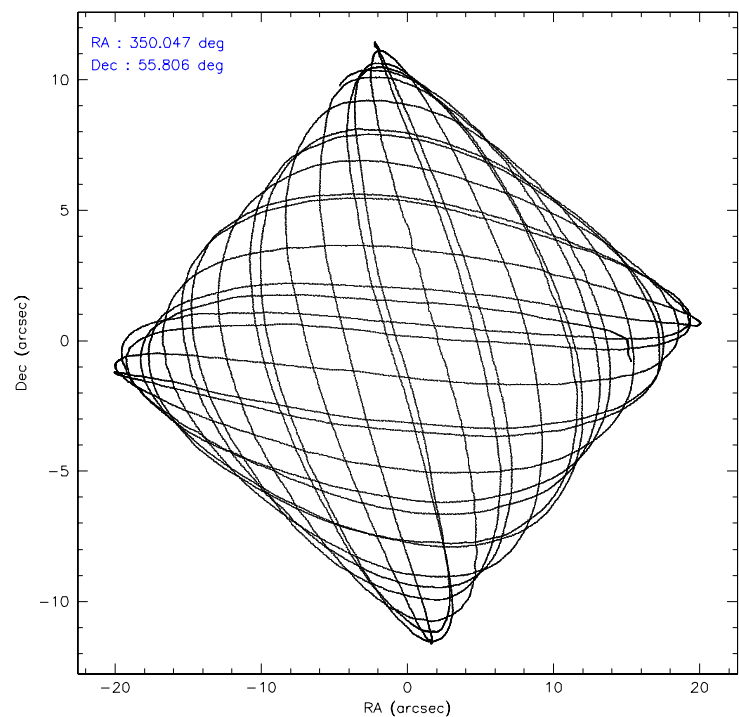
	ccd 2	ccd 3	ccd 5	ccd 6	ccd 7	ccd 8
level 1 events	85597	82116	139676	96886	220141	112381
rejected events	69703	66503	62488	67407	63283	79311
rejected %	81%	80%	44%	69%	28%	70%

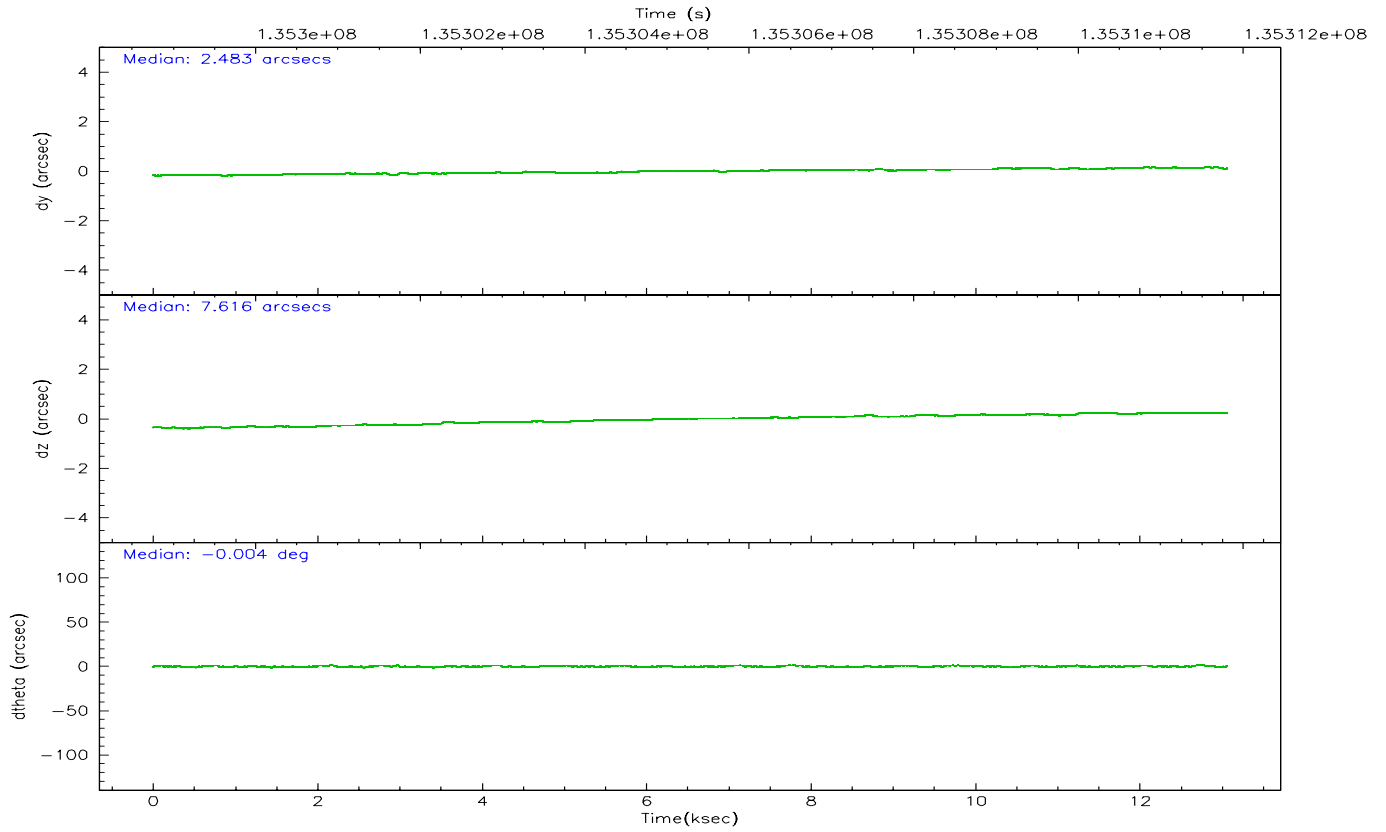
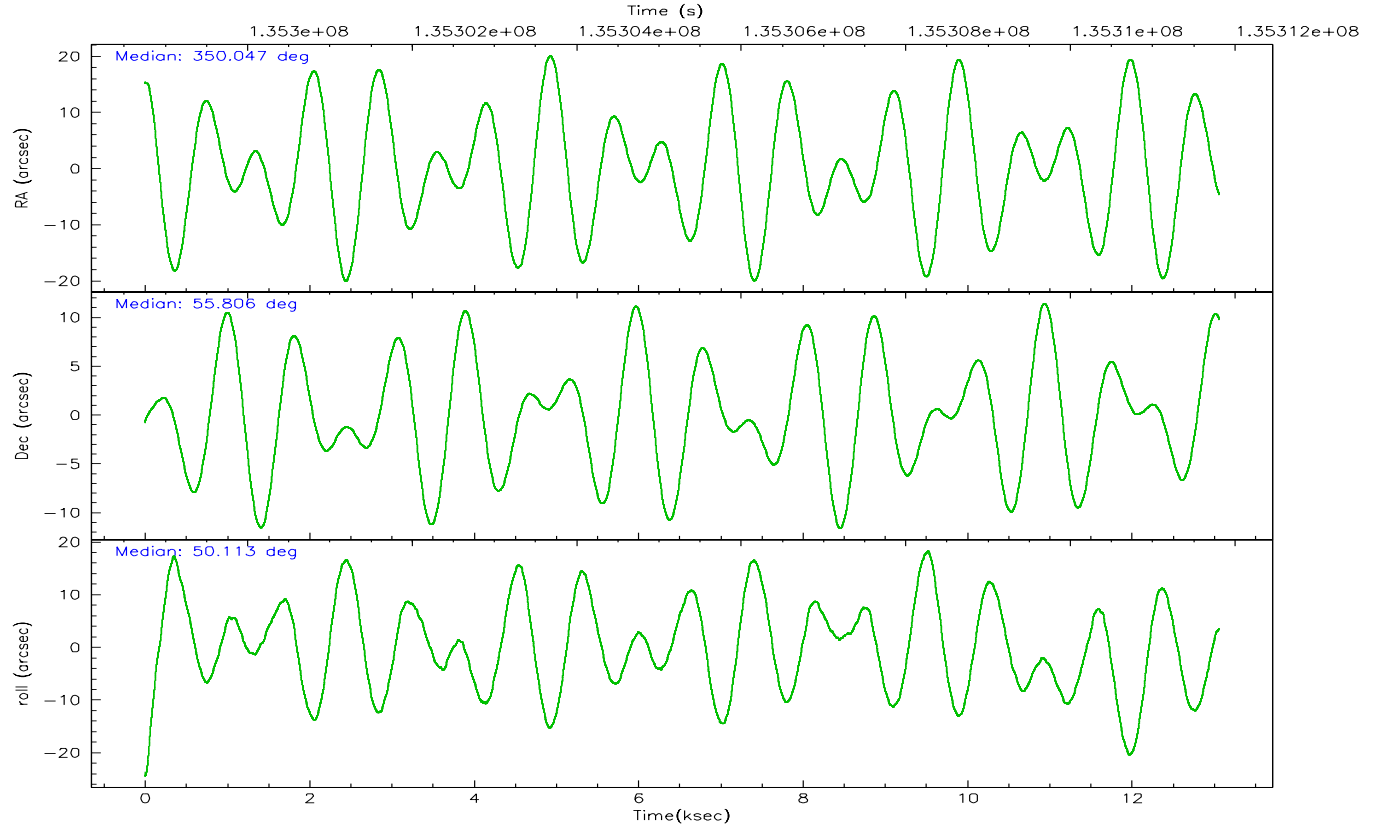
	ccd 2	ccd 3	ccd 5	ccd 6	ccd 7	ccd 8
grade 0 events	10107	9983	19365	22580	57150	18837
	11%	12%	13%	23%	25%	16%
grade 1 events	53	68	112	116	96	95
	0%	0%	0%	0%	0%	0%
grade 2 events	2369	2139	22702	2915	38804	4882
	2%	2%	16%	3%	17%	4%
grade 3 events	928	924	3101	1065	13930	2223
	1%	1%	2%	1%	6%	1%
grade 4 events	923	910	3042	1070	13788	2101
	1%	1%	2%	1%	6%	1%
grade 5 events	2862	3133	5790	3346	7502	4272
	3%	3%	4%	3%	3%	3%
grade 6 events	1573	1667	29021	1862	33241	5037
	1%	2%	20%	1%	15%	4%
grade 7 events	66782	63292	56543	63932	55630	74934
	78%	77%	40%	65%	25%	66%

2.2 Compared Parameters

Parameter	Planned	Actual	Parameter	Planned	Actual
Instrument	ACIS	ACIS	Obspar format version number	6	6
Detector	ACIS-235678	ACIS-235678	Obspar file type	PREDICTED	ACTUAL
Grating	NONE	NONE	Obspar update status	NONE	UPDATED
Data mode	VFAINT	VFAINT	On-chip summing requested	N	N
Observation mode	POINTING	POINTING	Subarray requested	NONE	NONE
Pointing RA	350.038250	350.0459662396925	Alternating exposures requested	N	N
Pointing Dec	55.779523	55.80642692519716	Primary exposure time	0.000000	3.2
Pointing Roll	49.969116	50.11935335300711			
SIM focus pos (mm)	-0.684267	-0.6828225247311905			
SIM defocus (mm)	0	0.001444936568705701			
SIM translation stage pos (mm)	-190.132523	-190.1400660498719			
SIM translation stage offset (mm)	0	0.00754346686406393			
Observation start time	135299812.184000	135298412.02822			
Observation start date	2002-04-15T23:15:48	2002-04-15T22:53:32			
Observation end time	135311812.184000	135312693.3538			
Observation end date	2002-04-16T02:35:48	2002-04-16T02:51:33			
Read mode	TIMED	TIMED			

2.3 Aspect



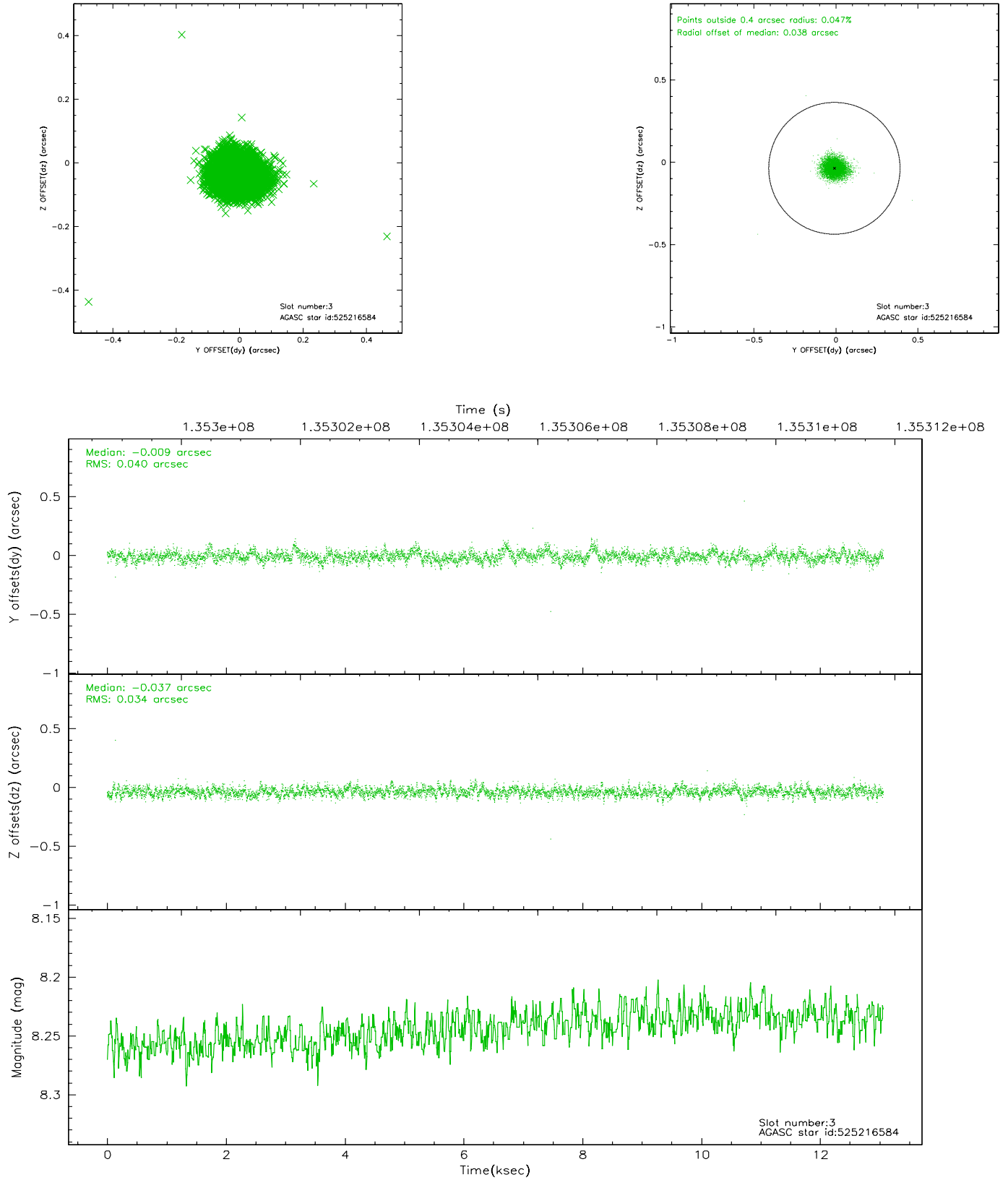


Slot Statistics

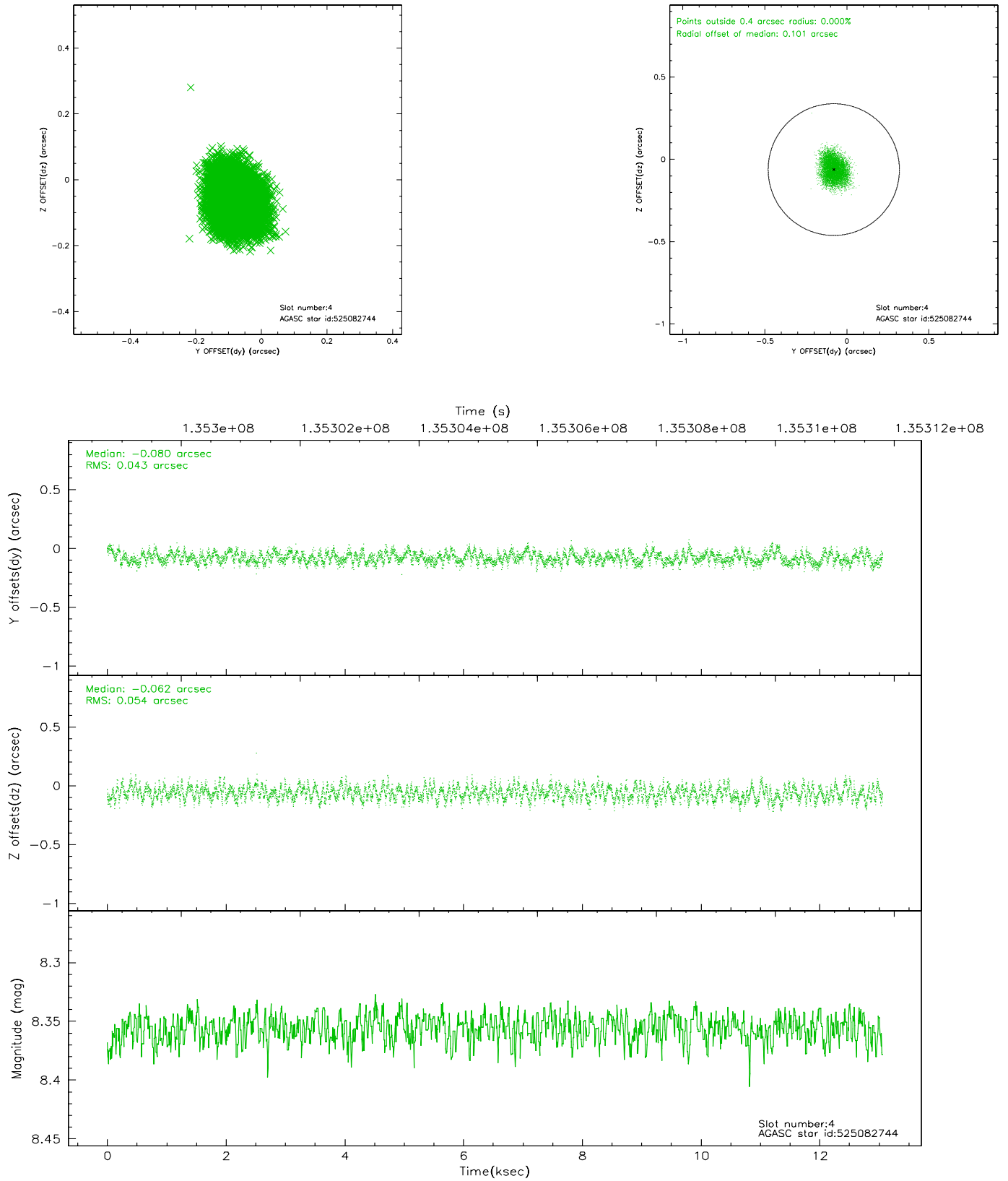
slot	status	id	mag	n_pts	med_dy	med_dz	dr1	dr2	ra	dec	mean_y	mean_z
0	FID	ACIS-S-2	7.10	3187	-0.009	0.011	0.014	0.023	0.000000	0.000000	-755.11	-1728.75
1	FID	ACIS-S-4	7.20	3186	-0.075	0.002	0.007	0.013	0.000000	0.000000	2157.93	179.34
2	FID	ACIS-S-5	7.23	3187	0.053	-0.004	0.011	0.020	0.000000	0.000000	-1807.42	173.43
3	GUIDE	525216584	8.24	6373	-0.009	-0.037	0.054	0.090	350.543602	56.348227	2218.34	548.69
4	GUIDE	525082744	8.36	6370	-0.080	-0.062	0.075	0.116	349.557053	56.253296	689.10	1837.37
5	GUIDE	524682032	8.44	6304	-0.123	0.062	0.060	0.100	350.993541	55.657988	922.76	-1756.72
6	GUIDE	524695952	9.42	6364	0.082	-0.015	0.091	0.149	350.319039	55.210799	-1195.96	-1756.98
7	GUIDE	524562888	9.54	6364	0.128	0.051	0.093	0.166	349.643084	55.219796	-2063.64	-672.45

2.4 Star Slots

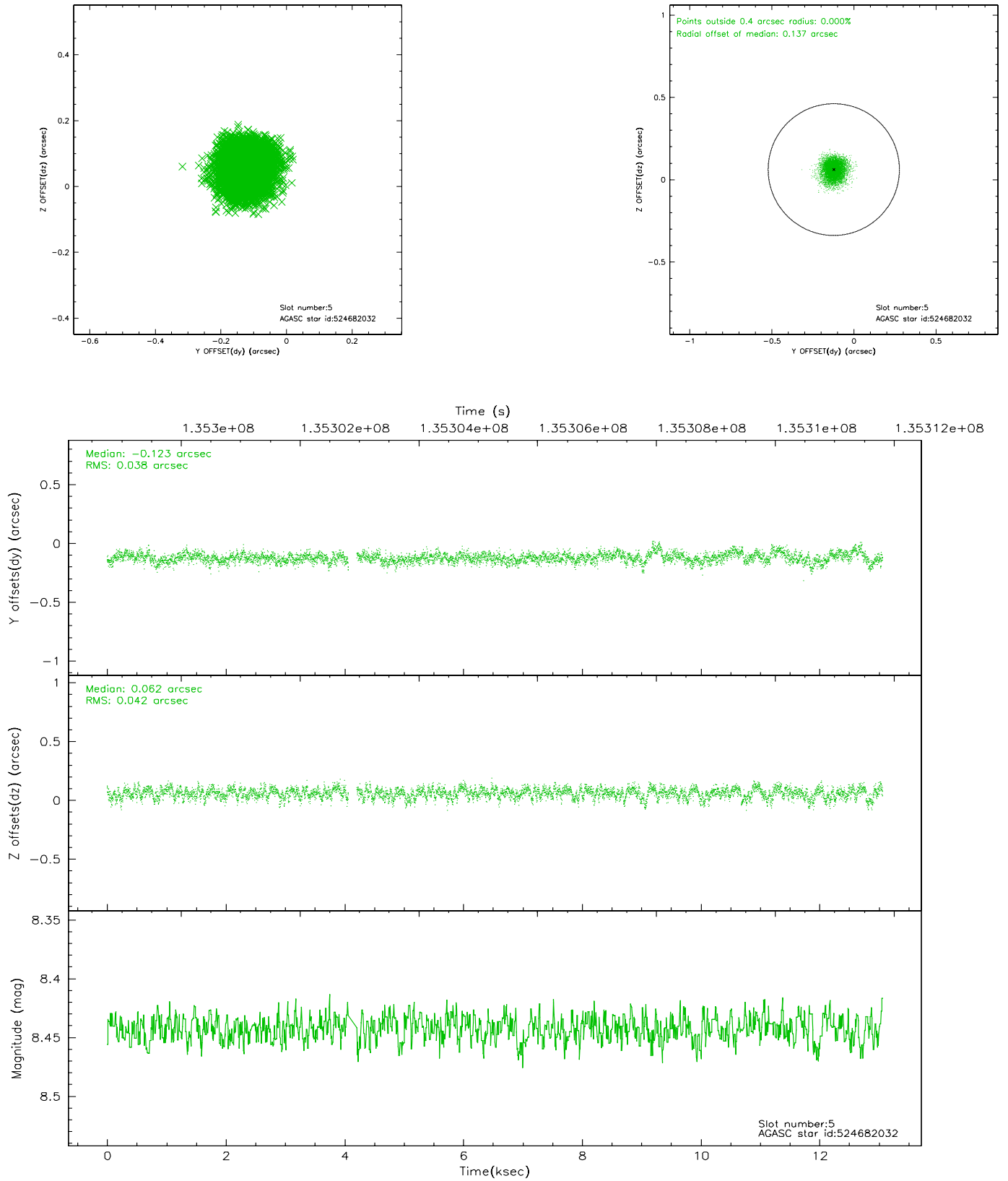
2.4.1 Slot 3



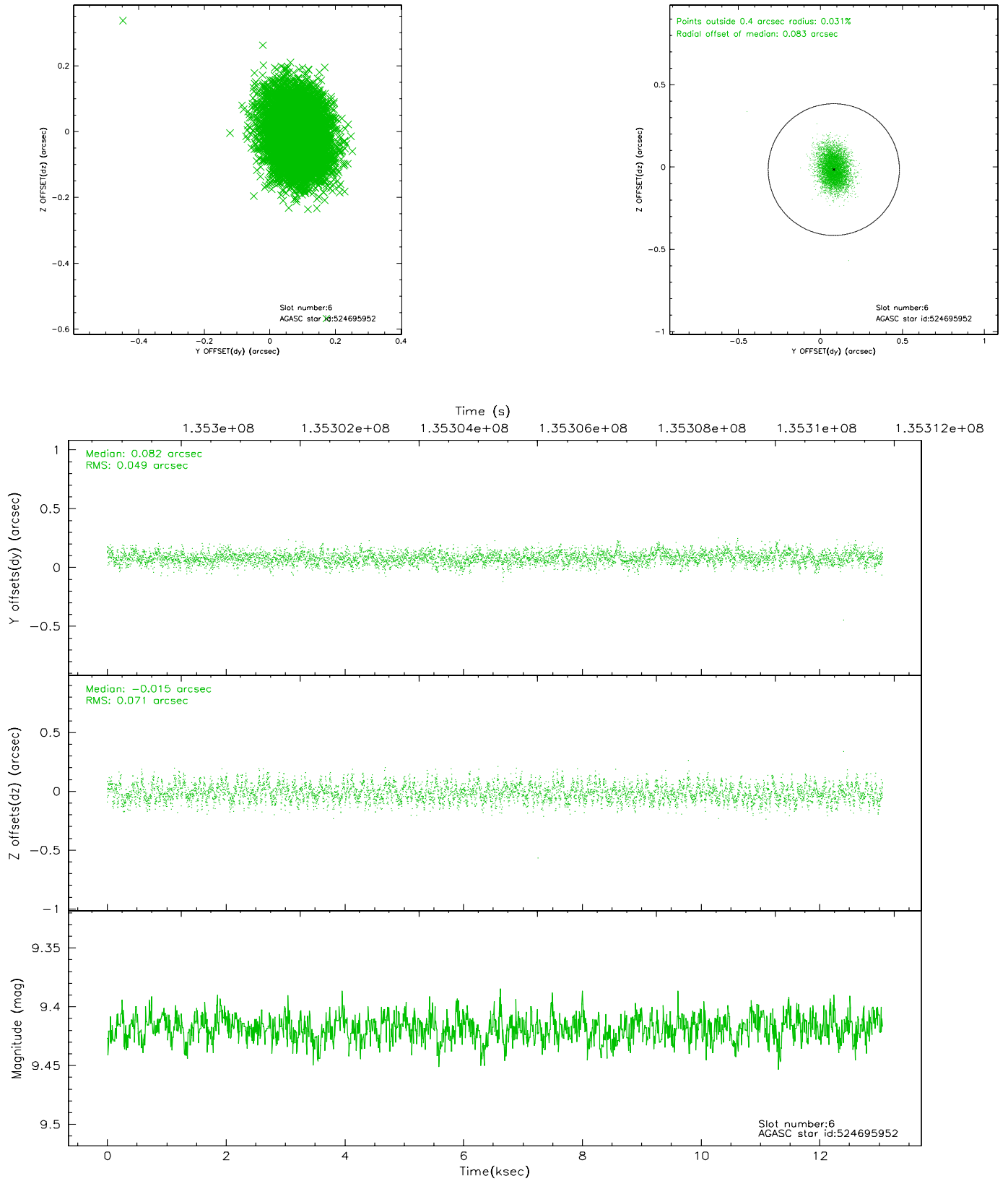
2.4.2 Slot 4



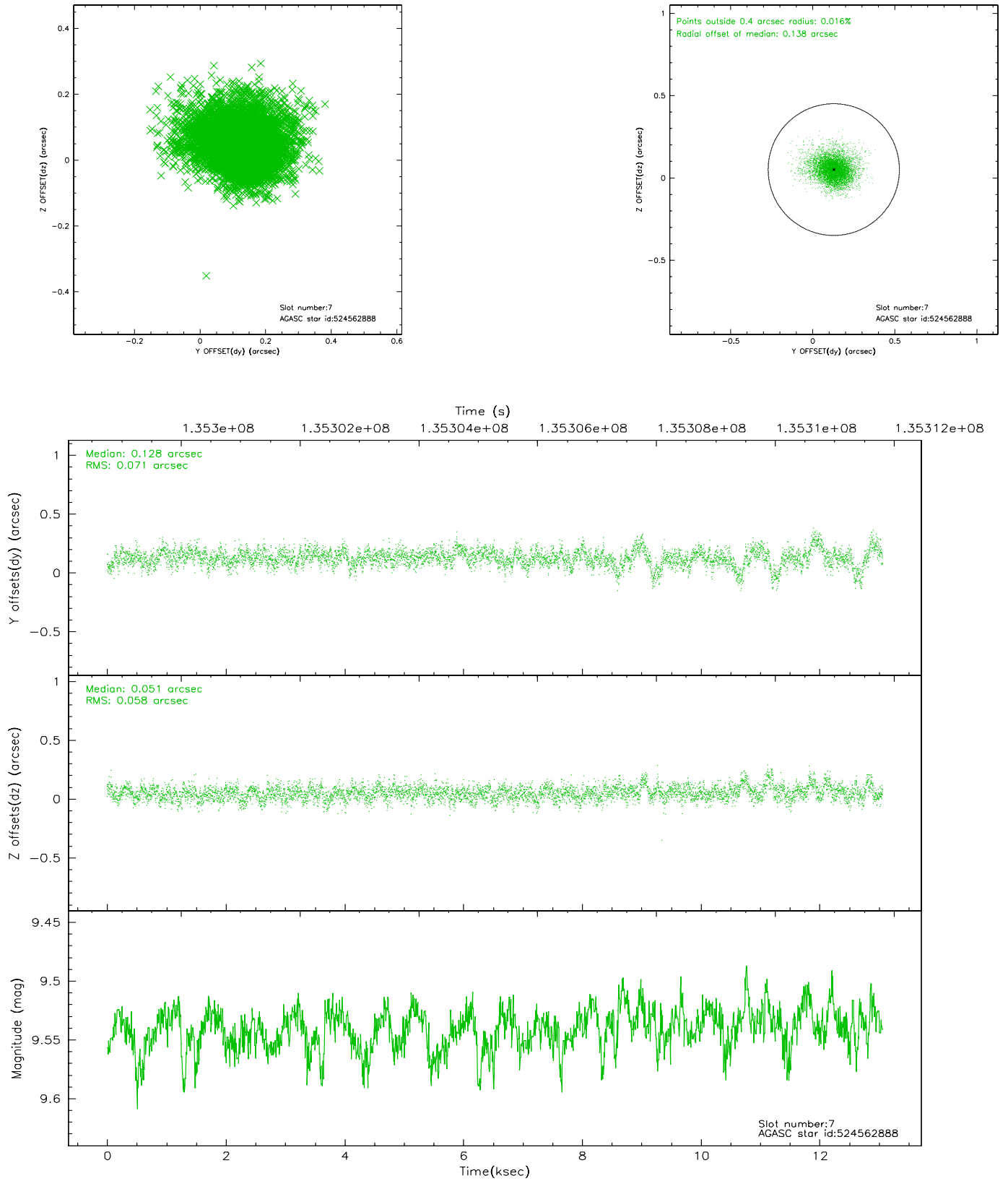
2.4.3 Slot 5



2.4.4 Slot 6

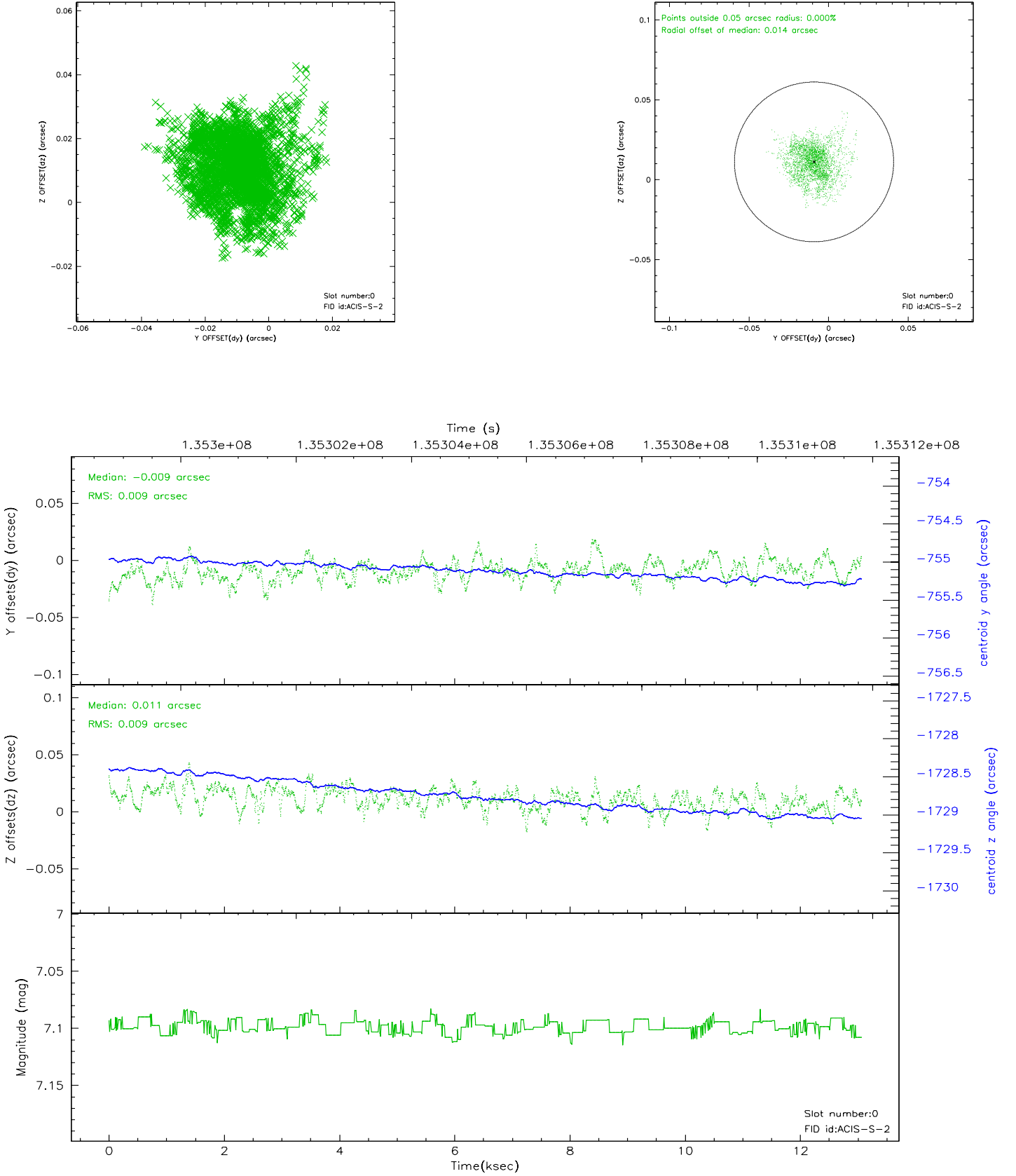


2.4.5 Slot 7

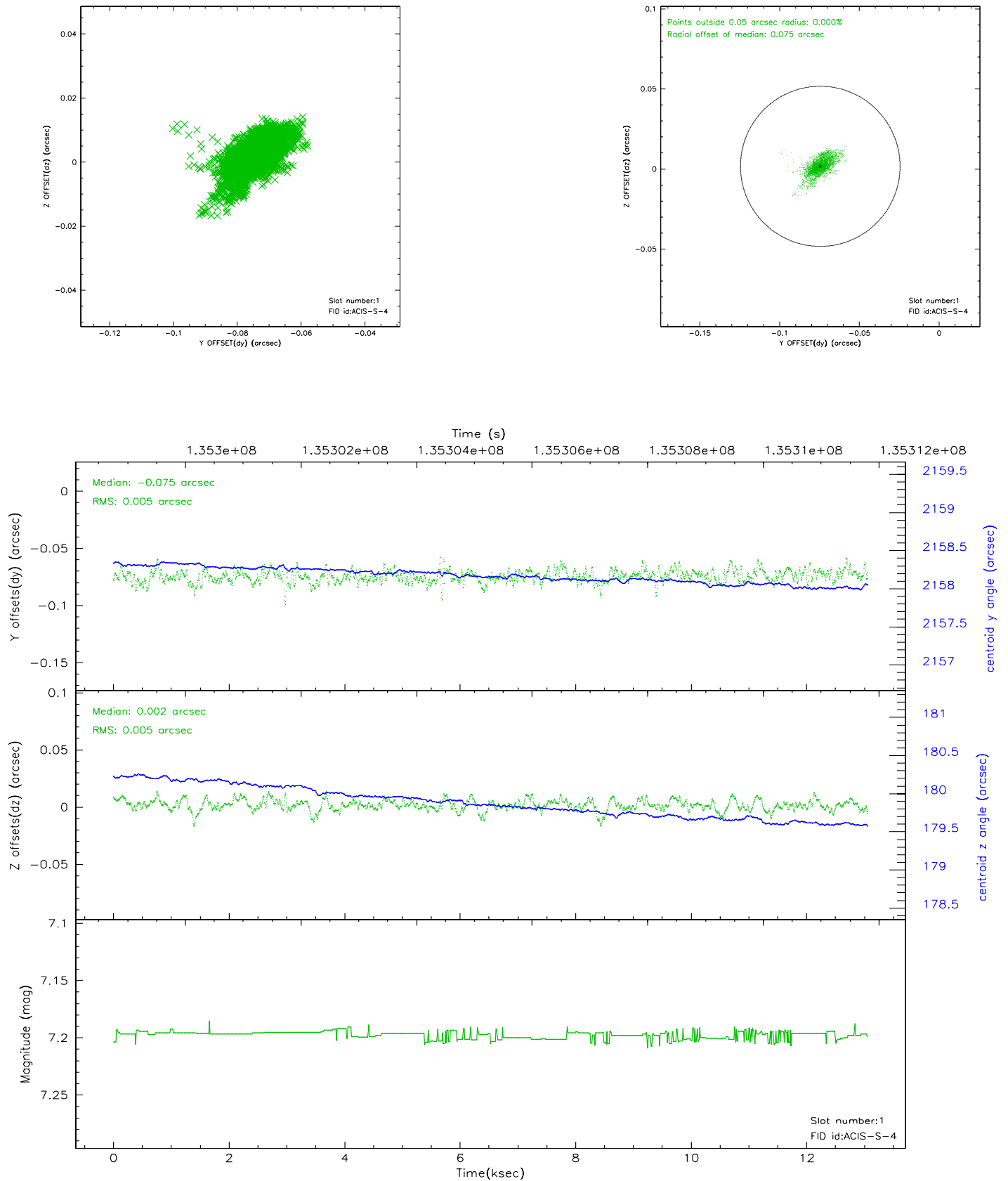


2.5 FID Slots

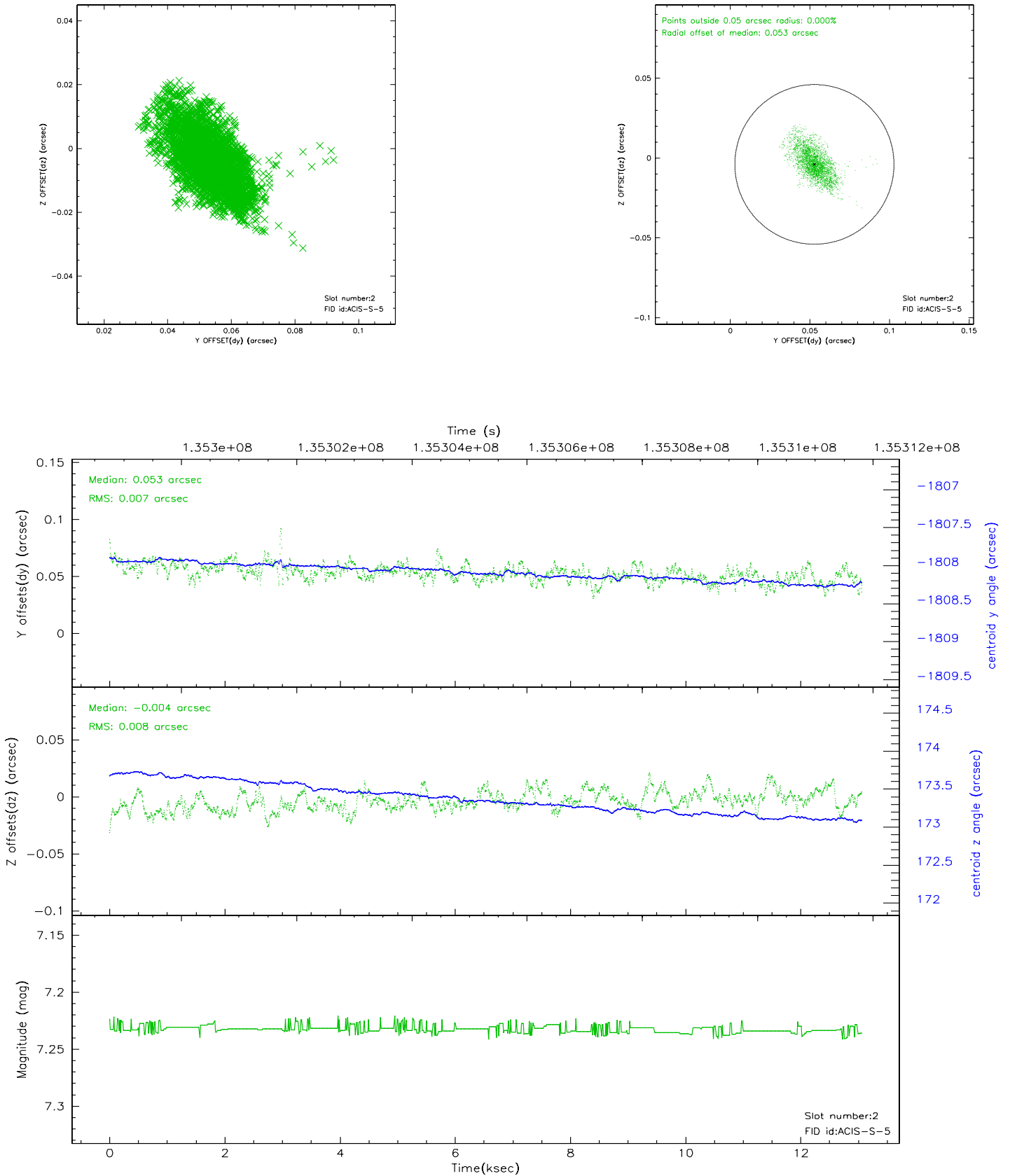
2.5.1 Slot 0



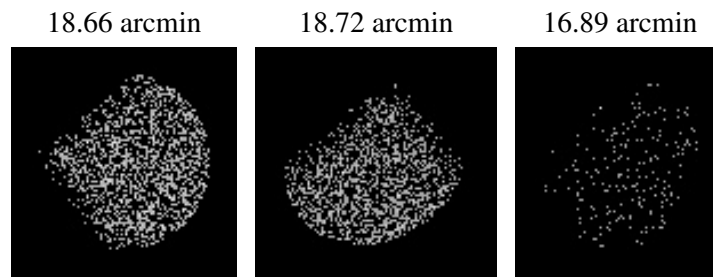
2.5.2 Slot 1



2.5.3 Slot 2



3 Point Sources



A Summary

A.1 Status

V&V Scientist	Jen Lauer
V&V Date (YYYY-MM-DD)	2006.09.11
V&V Edition	1
V&V Disposition and Status	OK
V&V Charge Time	11.964

A.2 Comments

Roll preference of 58 degrees not met. Monitor constraint not met:
follows obs3447 by 18.15 hours, instead of requested 4.8 hours.