

# V&V Reference Report

## L2 ASCDS Version : 7.6.9

Observation 2518 - L2 Version 001  
Chandra X-Ray Center

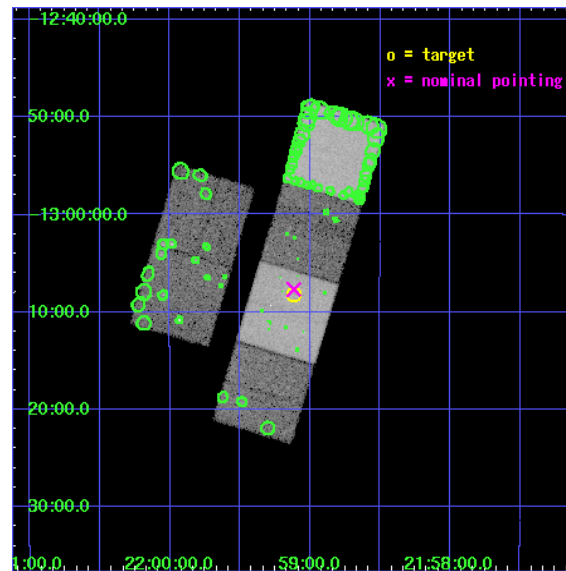
L2 Processing Date : Sep 30 2006

## Contents

<b>1</b>	<b>Front</b>	<b>2</b>
<b>2</b>	<b>OBI</b>	<b>3</b>
2.1	OBI . . . . .	3
2.1.1	Images . . . . .	3
2.1.2	Bias . . . . .	3
2.1.3	Parameters . . . . .	4
2.1.4	Events . . . . .	4
2.2	Compared Parameters . . . . .	5
2.3	Aspect . . . . .	6
2.4	Star Slots . . . . .	9
2.4.1	Slot 3 . . . . .	9
2.4.2	Slot 4 . . . . .	10
2.4.3	Slot 5 . . . . .	11
2.4.4	Slot 6 . . . . .	12
2.4.5	Slot 7 . . . . .	13
2.5	FID Slots . . . . .	14
2.5.1	Slot 0 . . . . .	14
2.5.2	Slot 1 . . . . .	15
2.5.3	Slot 2 . . . . .	16
<b>3</b>	<b>Point Sources</b>	<b>17</b>
<b>A</b>	<b>Summary</b>	<b>18</b>
A.1	Status . . . . .	18
A.2	Comments . . . . .	18

# 1 Front

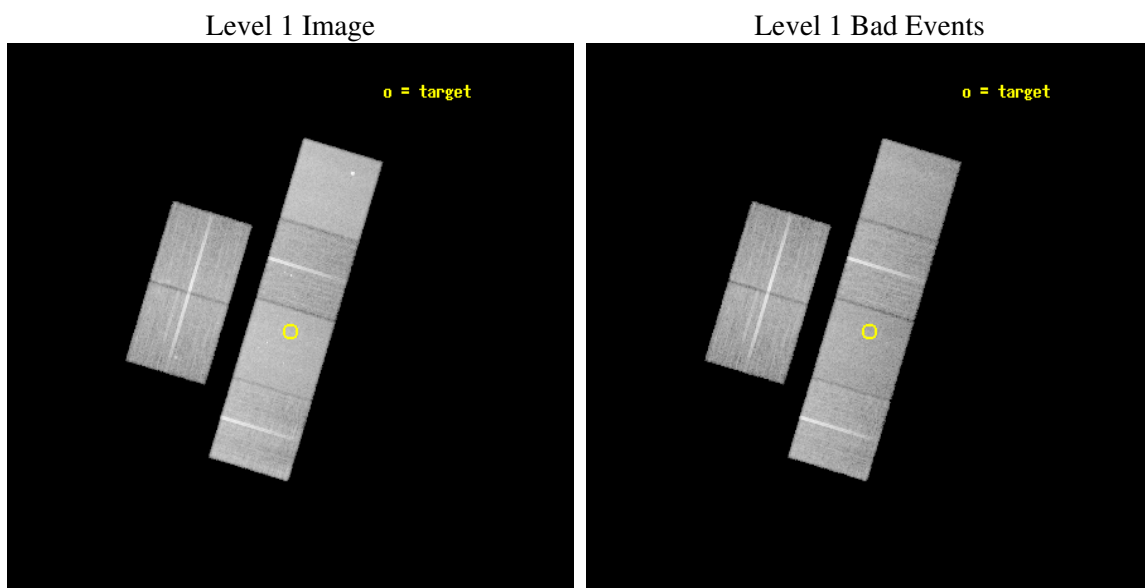
seq_num	100028
obs_id	2518
title	SEARCH FOR X-RAYS FROM URANUS ALTERNATE TARGET
observer	Professor Gordon Garmire
object	URANUS
dtcycle	0
cycle	P
ra_targ	329.779833
dec_targ	-13.137583
ra_nom	329.77882618846
dec_nom	-13.128421248386
roll_nom	106.73749477851
revision	2
ontime	29961.599888384
livetime	29582.208069888
ontime2	29958.359027684
ontime3	29958.358918101
ontime5	29961.599888384
ontime6	29951.877037346
ontime7	29961.599888384
ontime8	29955.117947847
l2events	269182



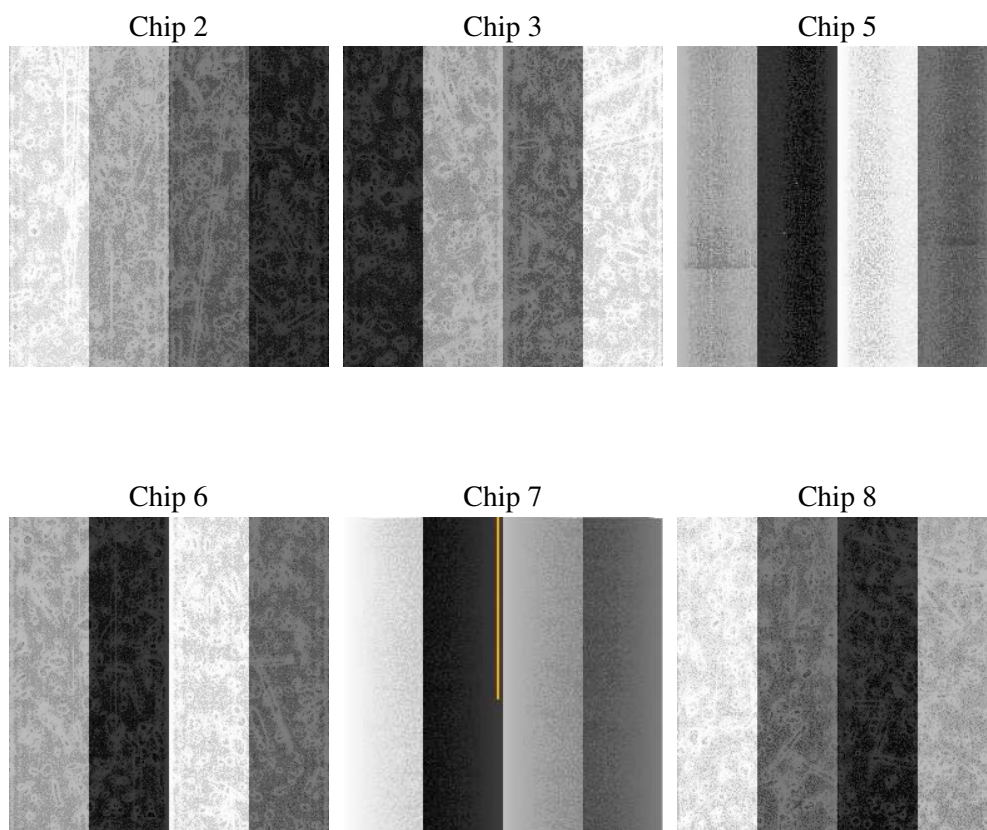
## 2 OBI

### 2.1 OBI

#### 2.1.1 Images



#### 2.1.2 Bias



### 2.1.3 Parameters

obi_num	0
ascdsver	7.6.9
caldsver	3.2.3
date	2006-09-30T10:51:11
revision	2

sched_exp_time	30000.000000
ontime	29966.335433722
ontime2	29963.094543099
ontime3	29963.094433516
ontime5	29966.335433722
ontime6	29956.612552762
ontime7	29966.335433722
ontime8	29959.853493184
l1events	1236080

### 2.1.4 Events

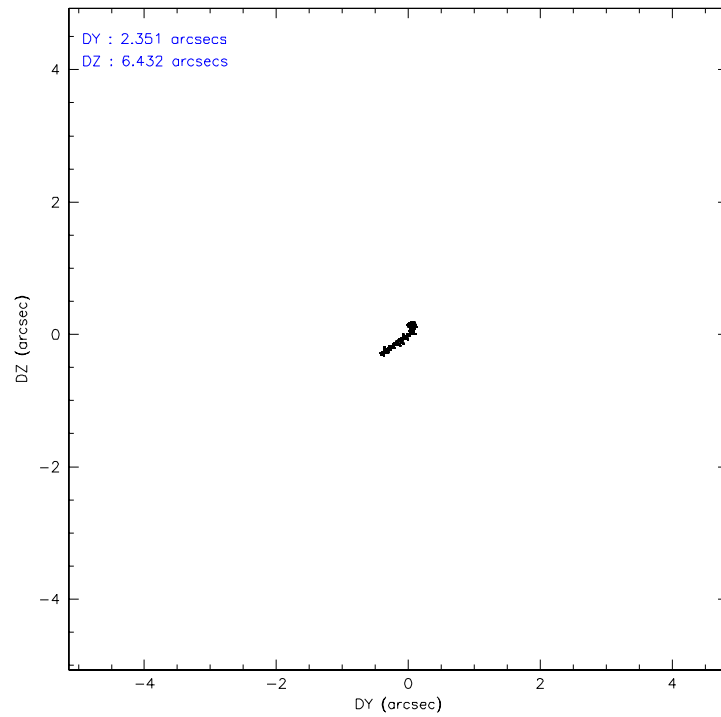
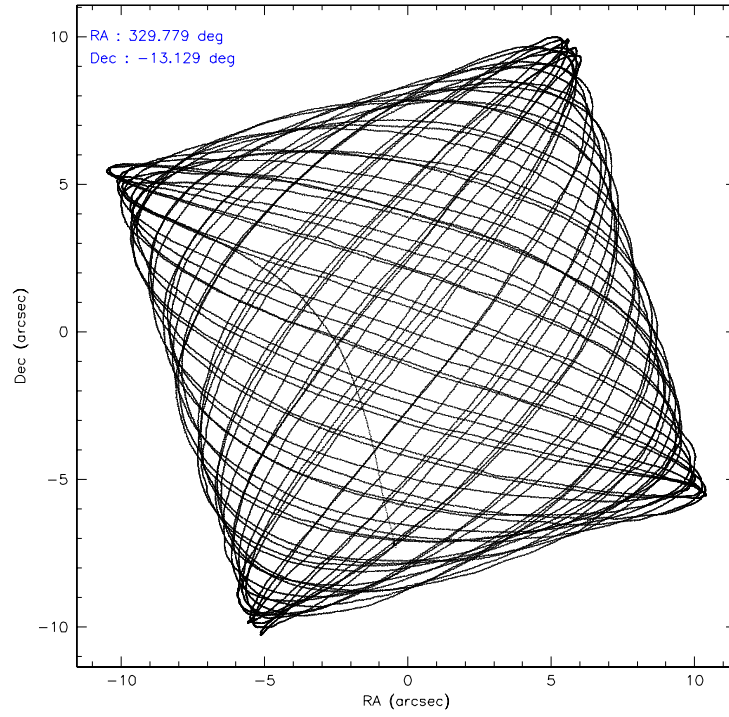
	ccd 2	ccd 3	ccd 5	ccd 6	ccd 7	ccd 8
level 1 events	176582	175301	250203	177505	234706	221783
rejected events	155760	154205	142714	156017	144541	176113
rejected %	88%	87%	57%	87%	61%	79%

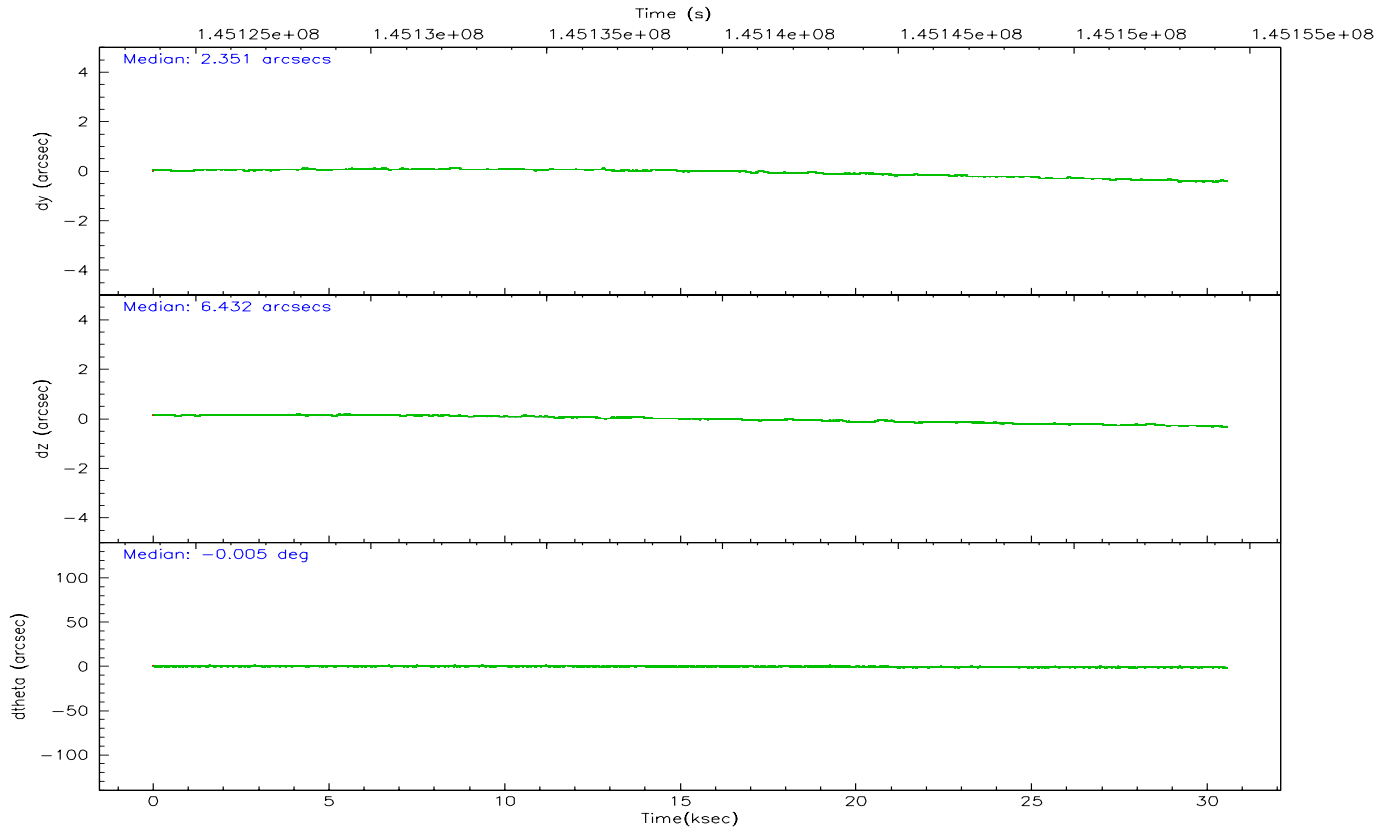
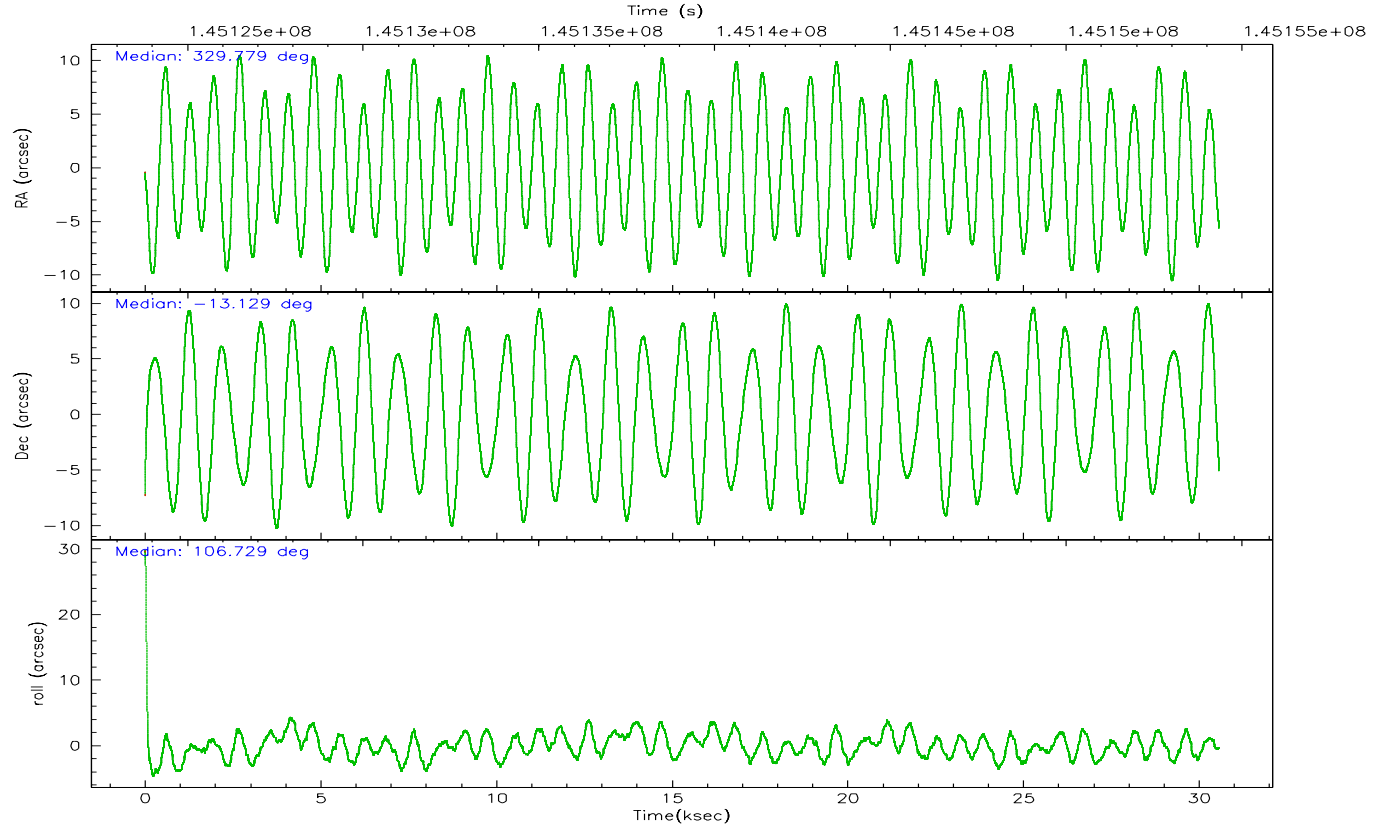
	ccd 2	ccd 3	ccd 5	ccd 6	ccd 7	ccd 8
grade 0 events	9372	9677	4912	8967	5861	14799
	5%	5%	1%	5%	2%	6%
grade 1 events	116	100	205	78	127	144
	0%	0%	0%	0%	0%	0%
grade 2 events	4165	3824	33369	4298	22009	9574
	2%	2%	13%	2%	9%	4%
grade 3 events	1992	2002	3739	2115	4693	5130
	1%	1%	1%	1%	1%	2%
grade 4 events	1959	2080	2435	2062	4731	4615
	1%	1%	0%	1%	2%	2%
grade 5 events	6887	7265	12029	7721	15773	10133
	3%	4%	4%	4%	6%	4%
grade 6 events	3339	3517	63059	4048	52883	11582
	1%	2%	25%	2%	22%	5%
grade 7 events	148752	146836	130455	148216	128629	165806
	84%	83%	52%	83%	54%	74%

## 2.2 Compared Parameters

Parameter	Planned	Actual	Parameter	Planned	Actual
Instrument	ACIS	ACIS	Obspar format version number	6	6
Detector	ACIS-235678	ACIS-235678	Obspar file type	PREDICTED	ACTUAL
Grating	NONE	NONE	Obspar update status	NONE	UPDATED
Data mode	VFAINT	VFAINT	Number of optional ACIS chips dropped	0	0
Observation mode	POINTING	POINTING	On-chip summing requested	N	N
Pointing RA	329.799458	329.7788261884637	Subarray requested	NONE	NONE
Pointing Dec	-13.146848	-13.12842124838629	Alternating exposures requested	N	N
Pointing Roll	106.585546	106.7374947785149	Primary exposure time	0.000000	3.2
Window start time	144547264.184000	144547264.184000			
Window stop time	147052864.184000	147052864.184000			
SIM focus pos (mm)	-0.684267	-0.6828225247311905			
SIM defocus (mm)	0	0.001444936568705701			
SIM translation stage pos (mm)	-190.132523	-190.1400660498719			
SIM translation stage offset (mm)	0	0.00754346686406393			
Observation start time	145124358.184000	145123205.53019			
Observation start date	2002-08-07T16:18:14	2002-08-07T16:00:05			
Observation end time	145154358.184000	145155022.04399			
Observation end date	2002-08-08T00:38:14	2002-08-08T00:50:22			
Read mode	TIMED	TIMED			

## 2.3 Aspect





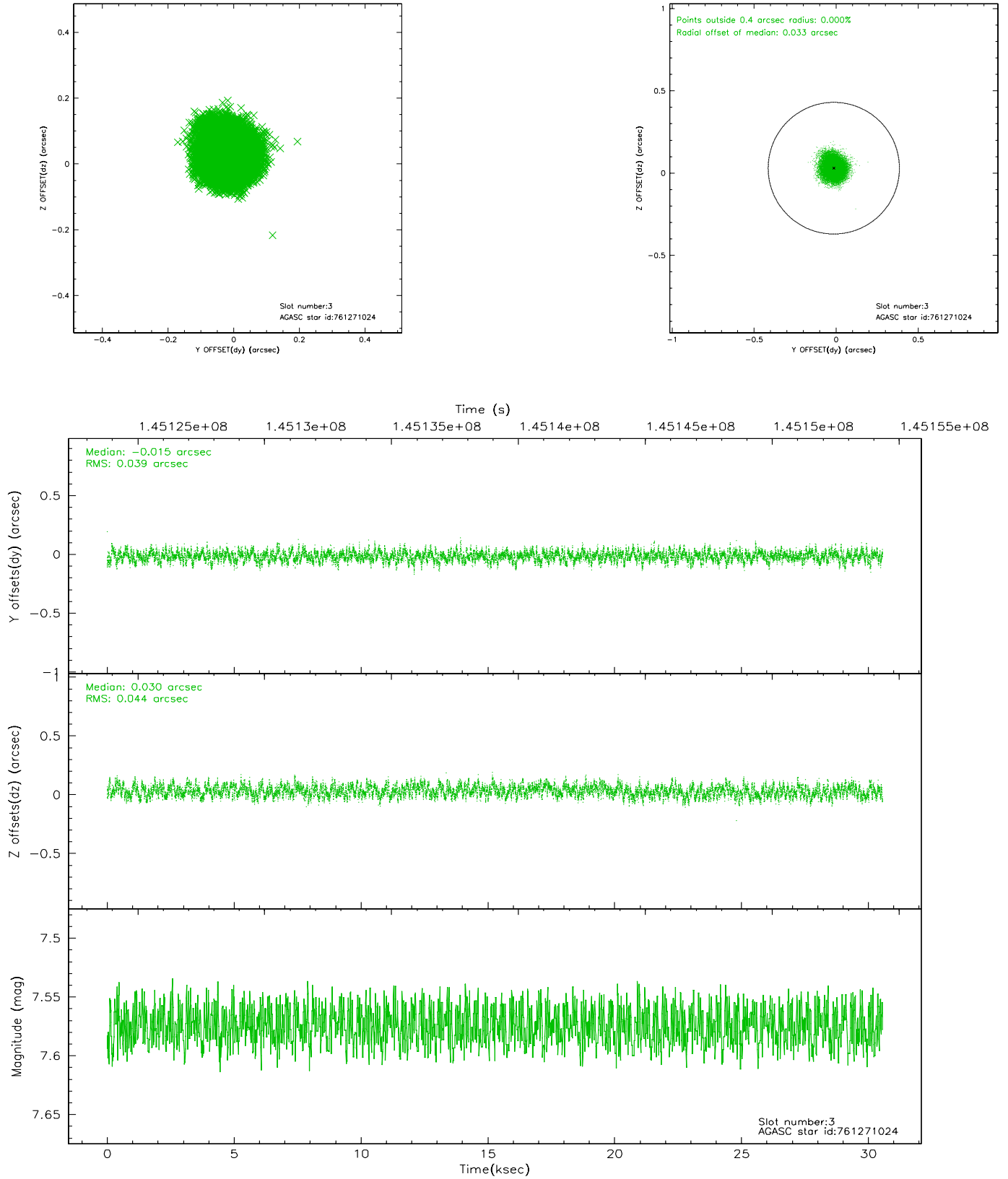
### Slot Statistics

slot	status	id	mag	n_pts	med_dy	med_dz	dr1	dr2	ra	dec	mean_y	mean_z
0	FID	ACIS-S-2	7.11	7457	-0.022	0.036	0.018	0.030	0.000000	0.000000	-754.91	-1727.54
1	FID	ACIS-S-4	7.20	7456	-0.068	0.001	0.026	0.039	0.000000	0.000000	2158.28	180.88
2	FID	ACIS-S-5	7.24	7457	0.056	-0.028	0.009	0.016	0.000000	0.000000	-1807.61	174.54
3	GUIDE	761271024	7.57	14914	-0.015	0.030	0.064	0.100	330.271118	-13.027492	-60.61	-1706.47
4	GUIDE	759833984	8.65	14906	-0.076	-0.028	0.069	0.108	329.260351	-12.979980	1114.65	1642.63
5	GUIDE	760355384	8.79	14911	0.018	-0.090	0.083	0.131	329.228022	-13.349253	-128.08	2127.96
6	GUIDE	761269352	8.97	14908	0.035	0.094	0.070	0.115	330.321009	-13.126973	-453.62	-1771.14
7	GUIDE	761269424	9.15	14911	0.032	-0.011	0.110	0.178	329.470230	-13.894327	-2250.46	1871.77

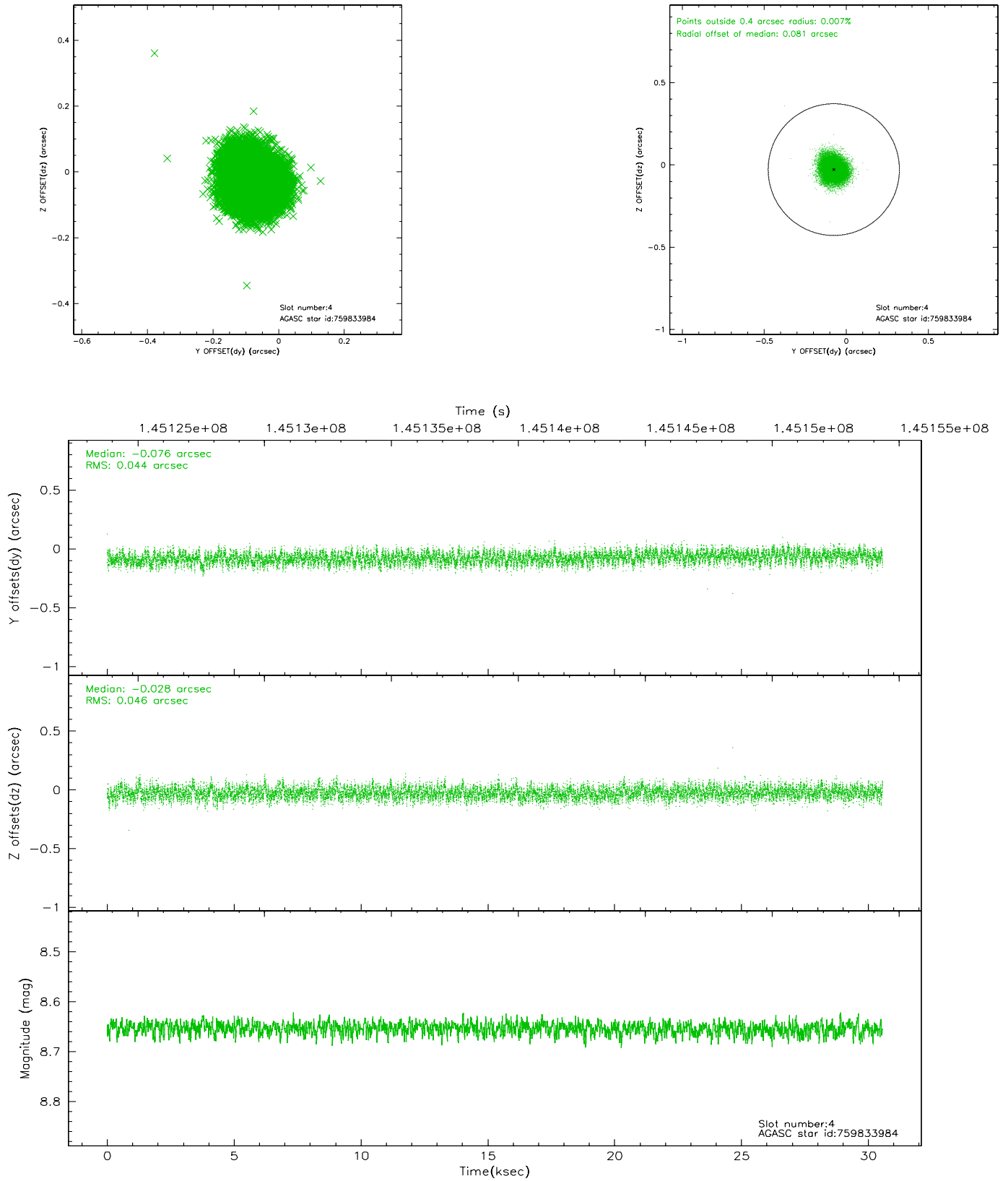


## 2.4 Star Slots

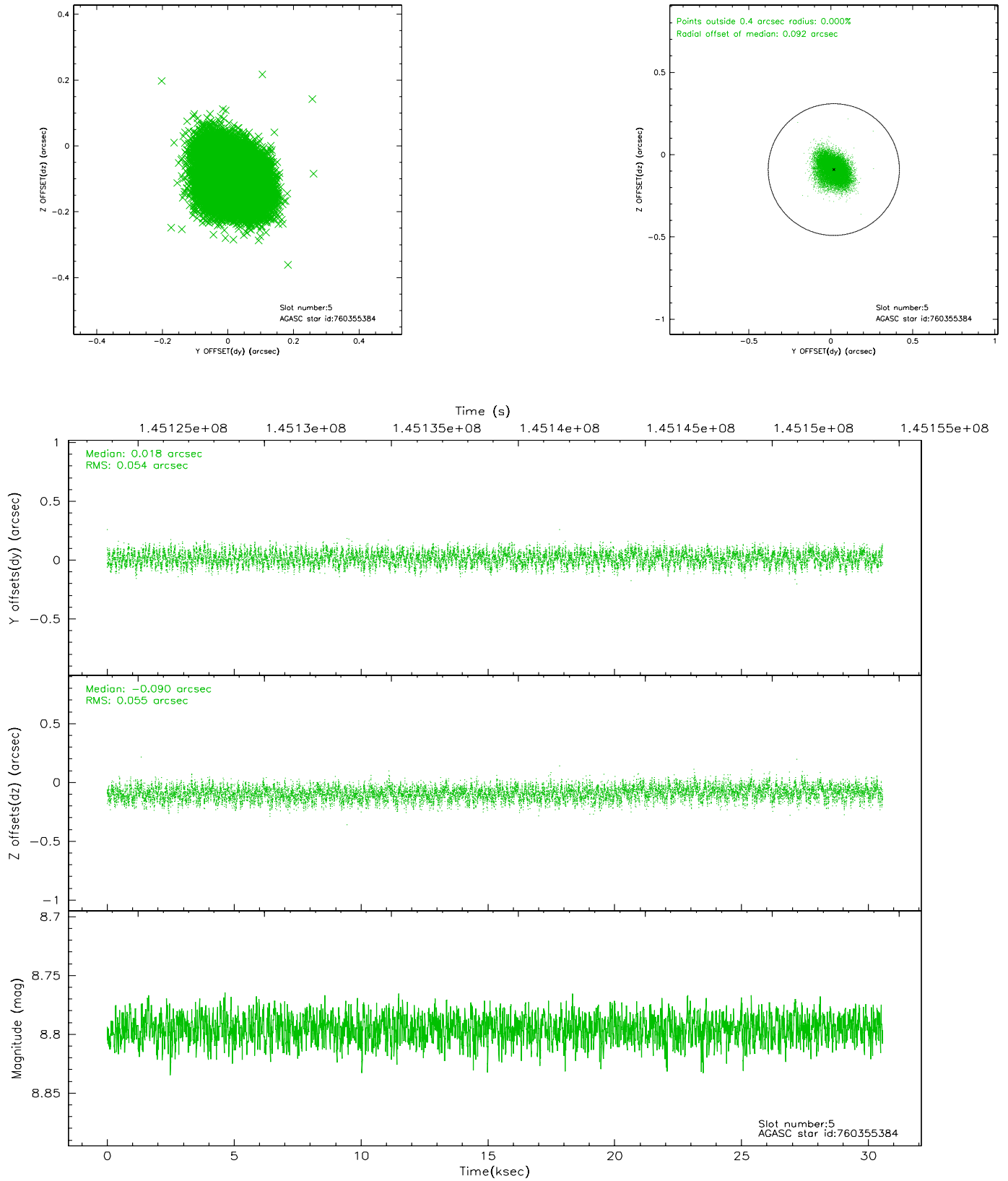
### 2.4.1 Slot 3



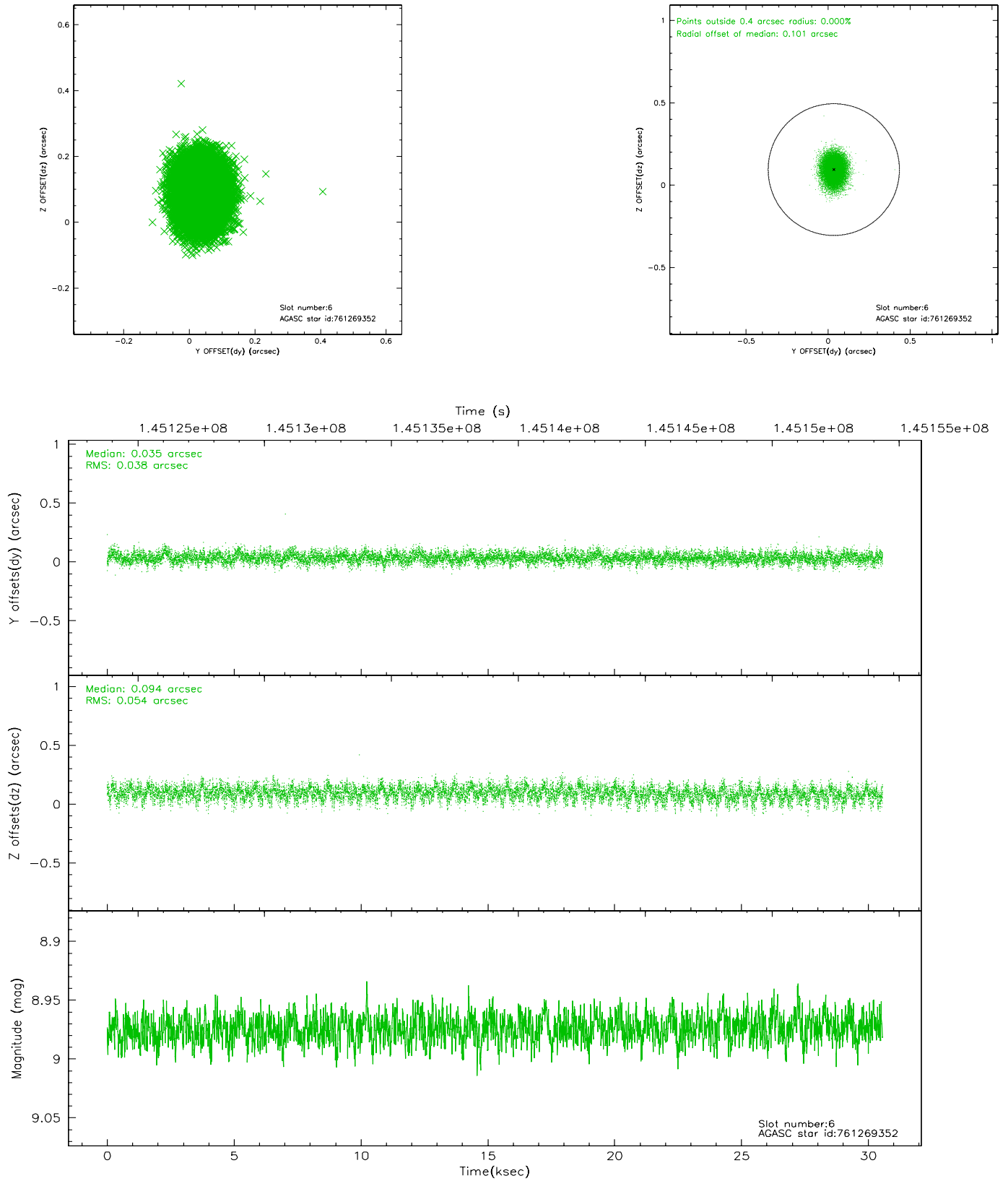
## 2.4.2 Slot 4



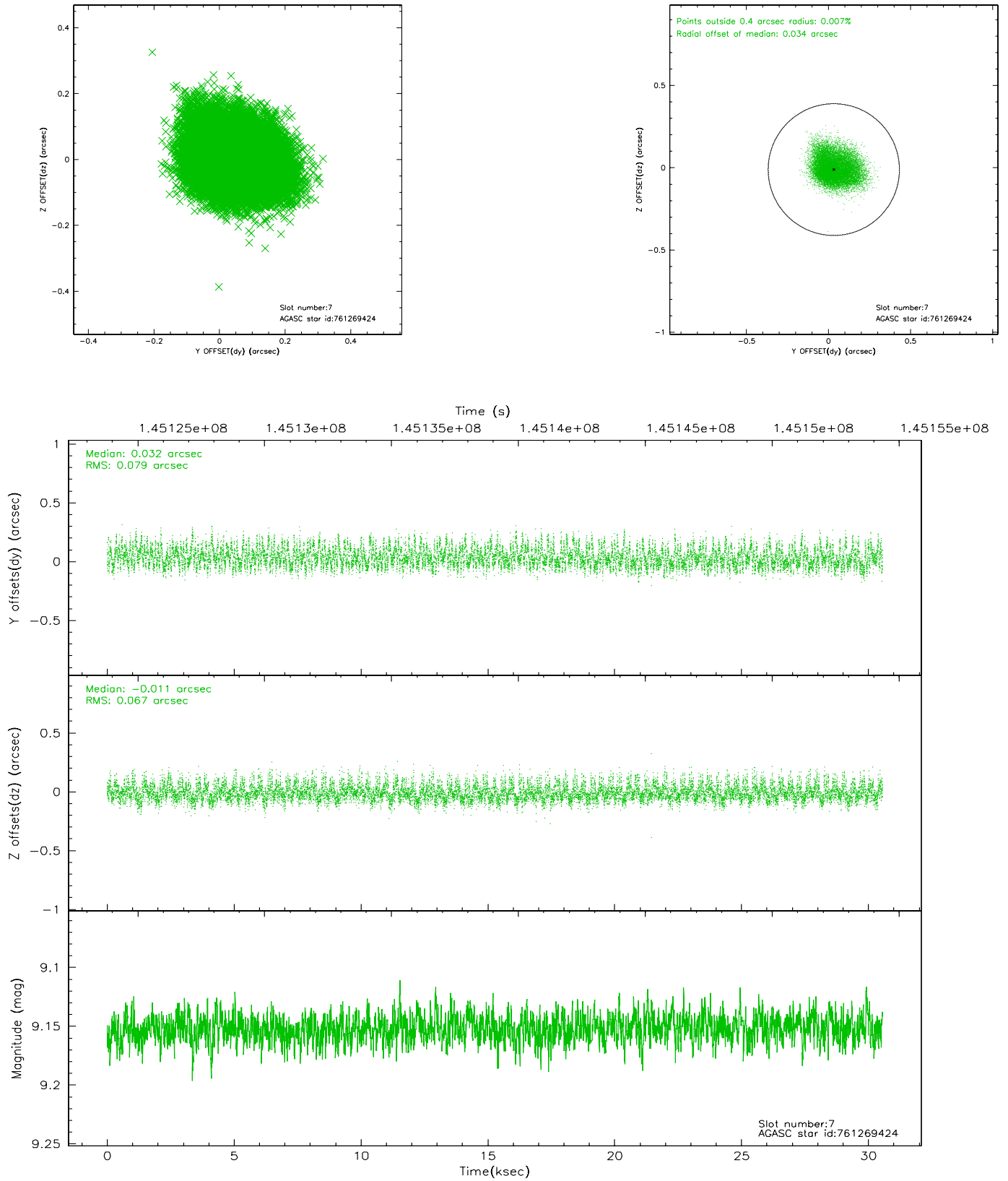
### 2.4.3 Slot 5



## 2.4.4 Slot 6

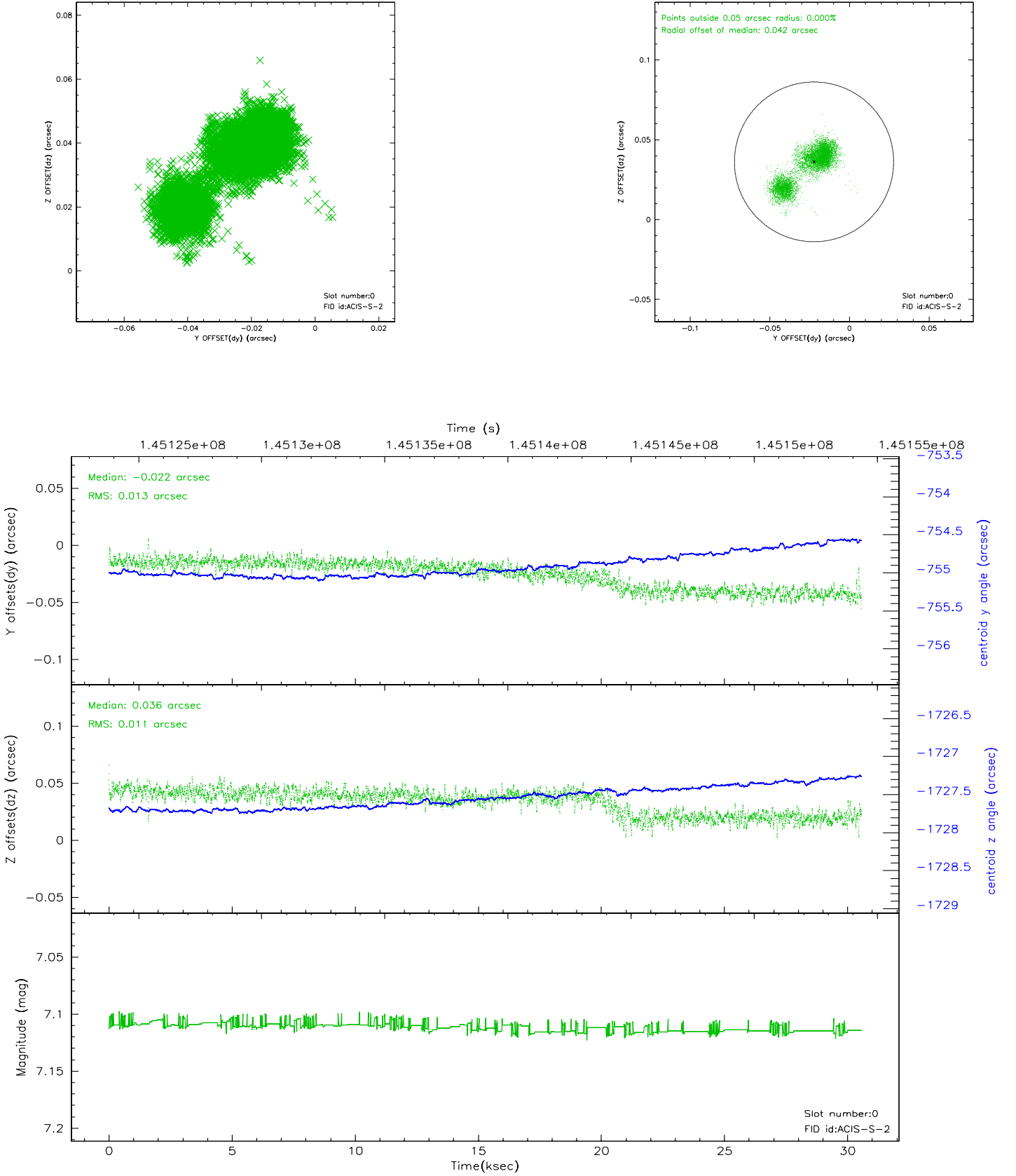


## 2.4.5 Slot 7

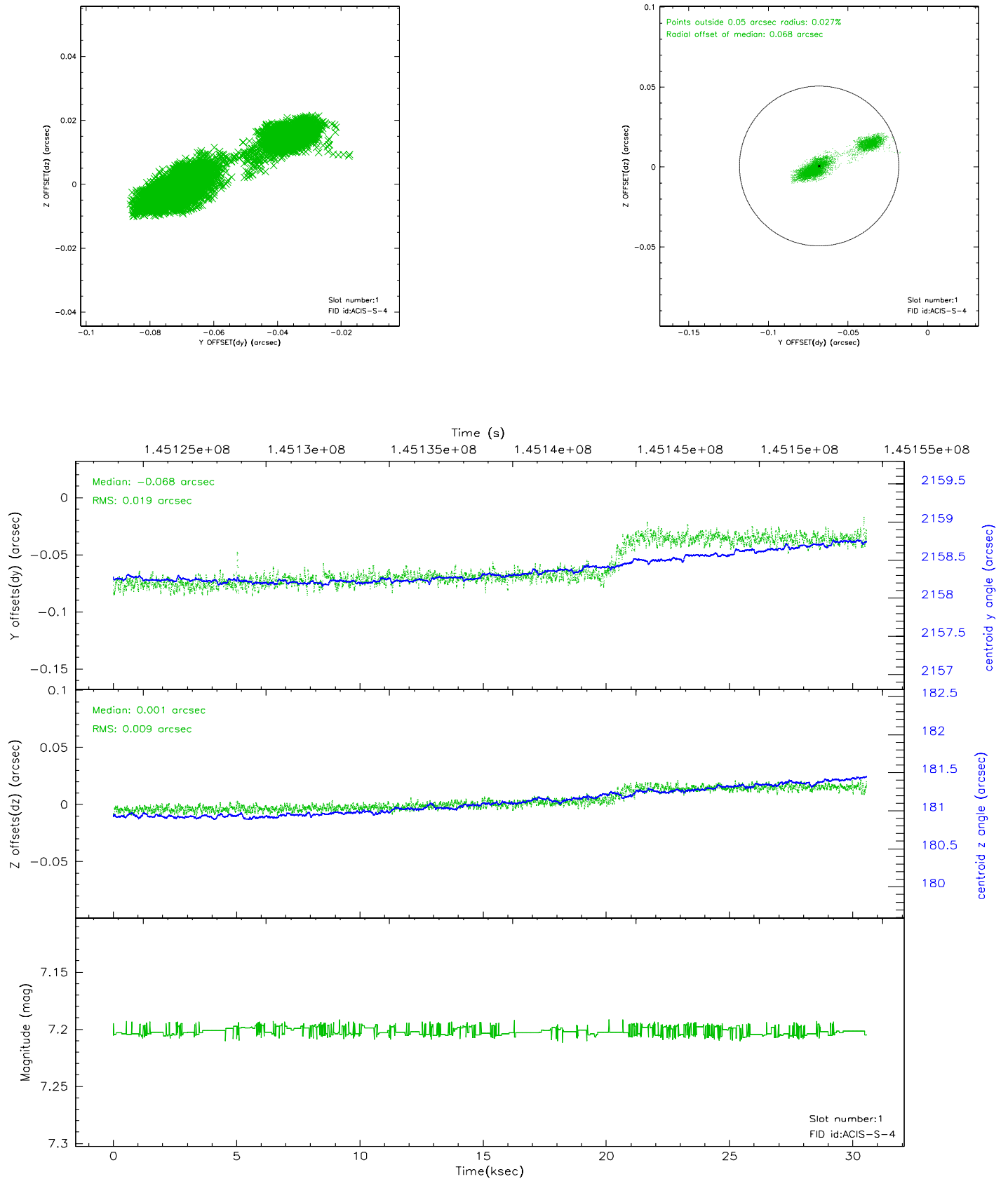


## 2.5 FID Slots

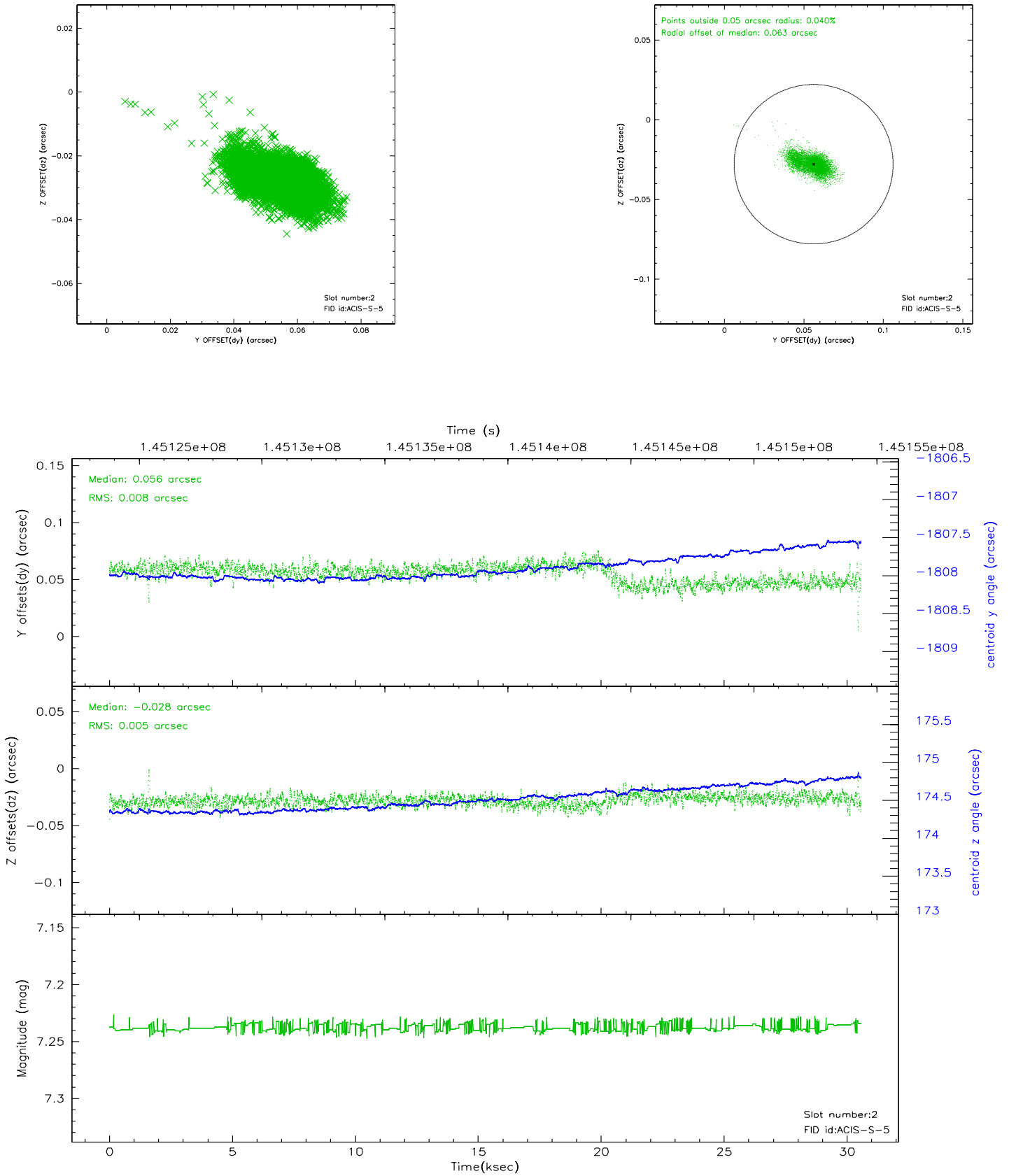
### 2.5.1 Slot 0



## 2.5.2 Slot 1

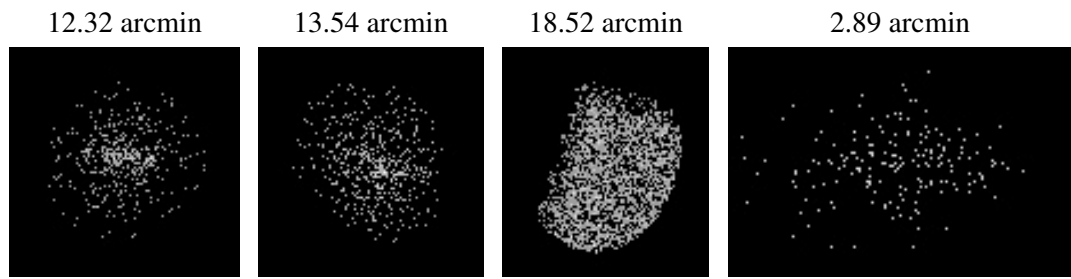


### 2.5.3 Slot 2





### 3 Point Sources



## A Summary

### A.1 Status

V&V Scientist	Jen Lauer
V&V Date (YYYY-MM-DD)	2006.10.02
V&V Edition	1
V&V Disposition and Status	OK
V&V Charge Time	29.964

### A.2 Comments

Window constraint met.