

V&V Reference Report

L2 ASCDS Version : 8.4.5

Observation 2484 - L2 Version 3
Chandra X-Ray Center

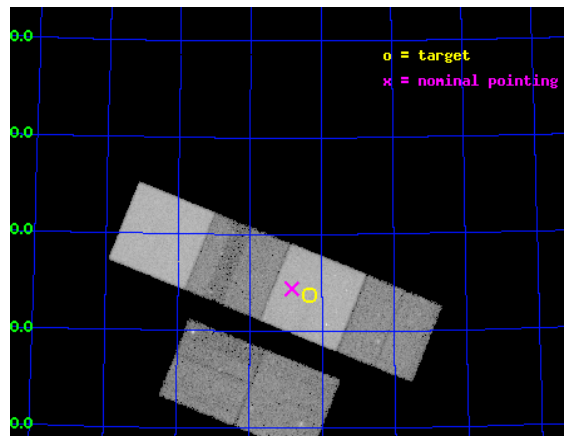
L2 Processing Date : Sep 26 2012

Contents

1	Front	2
2	OBI	3
2.1	OBI	3
2.1.1	Images	3
2.1.2	Bias	3
2.1.3	Parameters	4
2.1.4	Events	4
2.2	Compared Parameters	5
2.3	Aspect	6
2.4	Star Slots	9
2.4.1	Slot 3	9
2.4.2	Slot 4	10
2.4.3	Slot 5	11
2.4.4	Slot 6	12
2.4.5	Slot 7	13
2.5	FID Slots	14
2.5.1	Slot 0	14
2.5.2	Slot 1	15
2.5.3	Slot 2	16
A	Summary	17
A.1	Status	17
A.2	Comments	17

1 Front

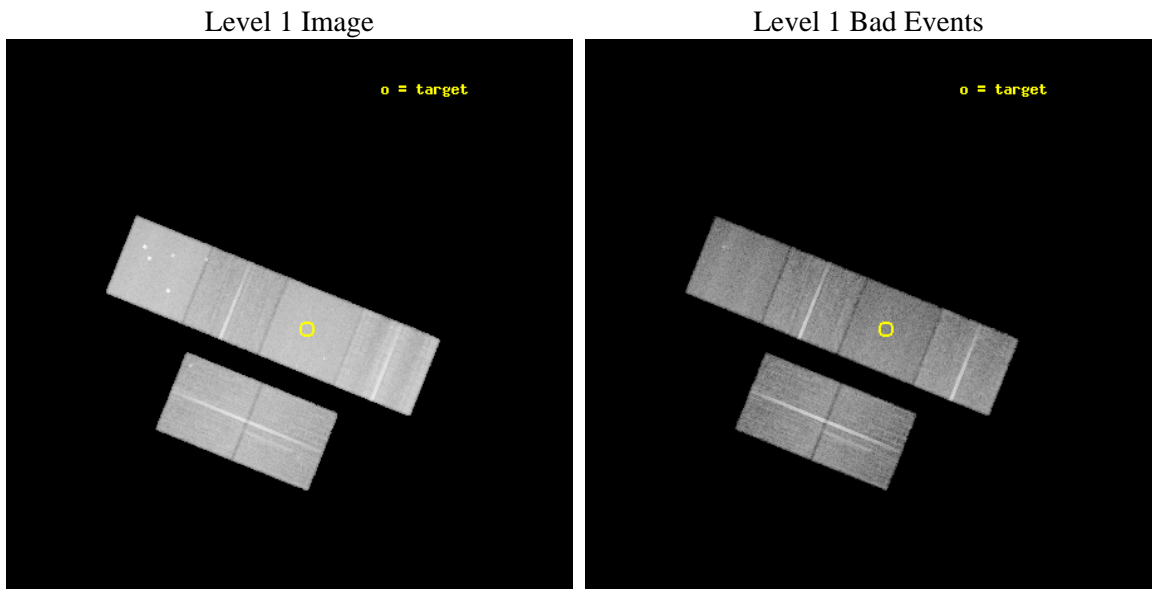
seq_num	900080	Sequence number
obs_id	2484	Observation id
title	DIFFUSE X-RAY EMISSION FROM THE MISSING BARYONS IN THE UNIVERSE	Pr
observer	Dr. Joel Bregman	Principal investigator
object	CHVC125	Source name
dtcycle	0	
cycle	P	events from which exps? Prim/Second/Both
ra_targ	187.083333	Observer's specified target RA [deg]
dec_targ	75.395833	Observer's specified target Dec [deg]
ra_nom	187.20829165417	Nominal RA [deg]
dec_nom	75.406605441206	Nominal Dec [deg]
roll_nom	21.902862459051	Nominal Roll [deg]
revision	3	Processing version of data
ontime	24342.400022656	Sum of GTIs [s]
livetime	24034.161896335	Livetime [s]
ontime2	24342.400022656	Sum of GTIs [s]
ontime3	24342.400022656	Sum of GTIs [s]
ontime5	24342.400022656	Sum of GTIs [s]
ontime6	24342.400022656	Sum of GTIs [s]
ontime7	24342.400022656	Sum of GTIs [s]
ontime8	24342.400022656	Sum of GTIs [s]
l2events	327196	Number of level 2 events



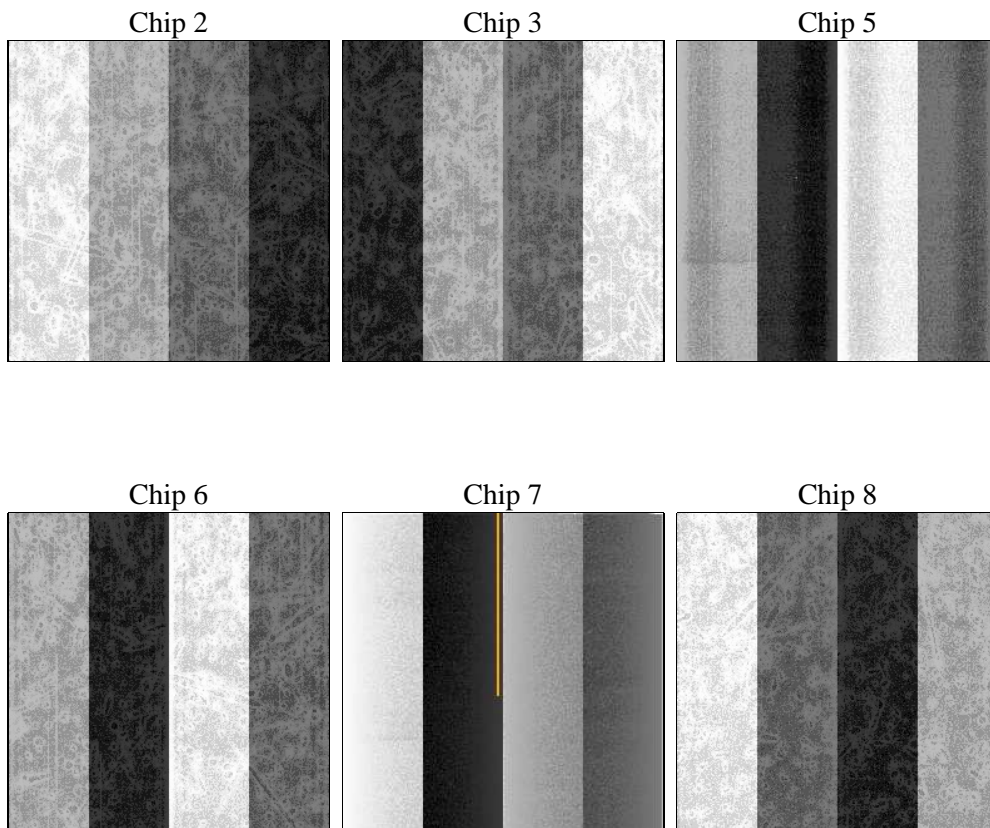
2 OBI

2.1 OBI

2.1.1 Images



2.1.2 Bias



2.1.3 Parameters

obi_num	1	Obi number	sched_exp_time	24200.000000	[s] Scheduled observation exposure time
ascdsver	8.4.5	Processing system revision	ontime	24342.400022656	Sum of GTIs [s]
caldsver	4.5.1.1	 	ontime2	24342.400022656	Sum of GTIs [s]
date	2012-09-26T02:31:49	Date and time of file creation	ontime3	24342.400022656	Sum of GTIs [s]
revision	3	Processing version of data	ontime5	24342.400022656	Sum of GTIs [s]
			ontime6	24342.400022656	Sum of GTIs [s]
			ontime7	24342.400022656	Sum of GTIs [s]
			ontime8	24342.400022656	Sum of GTIs [s]
			l1events	1253116	Number of level 1 events

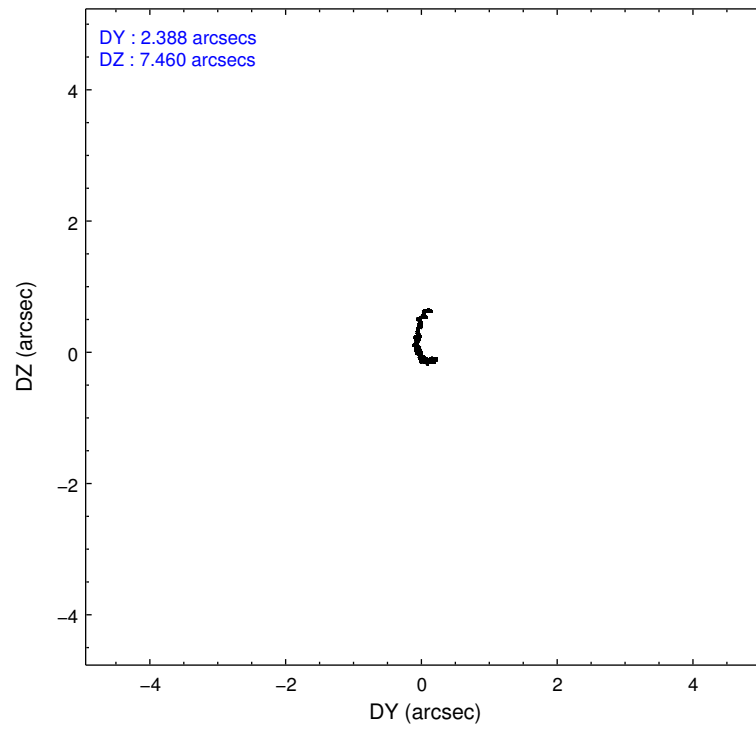
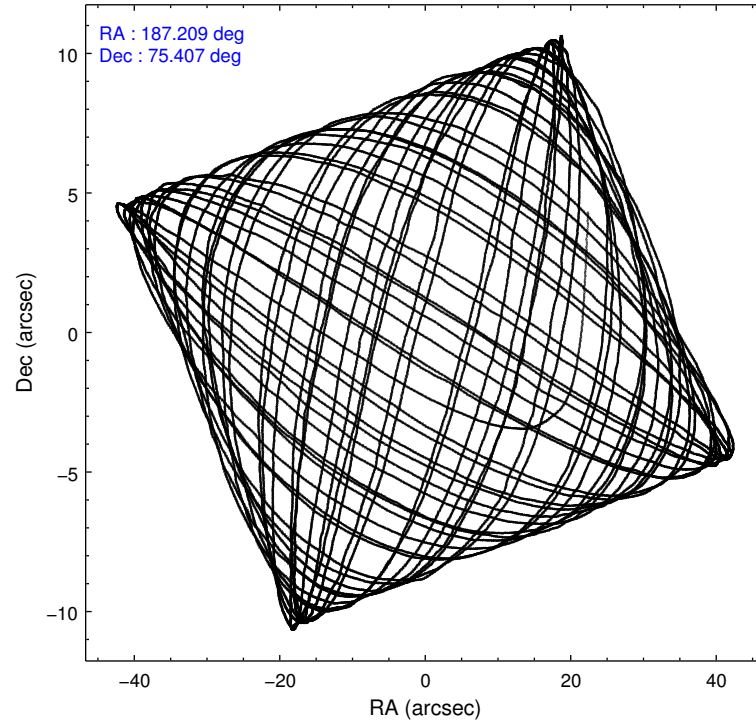
2.1.4 Events

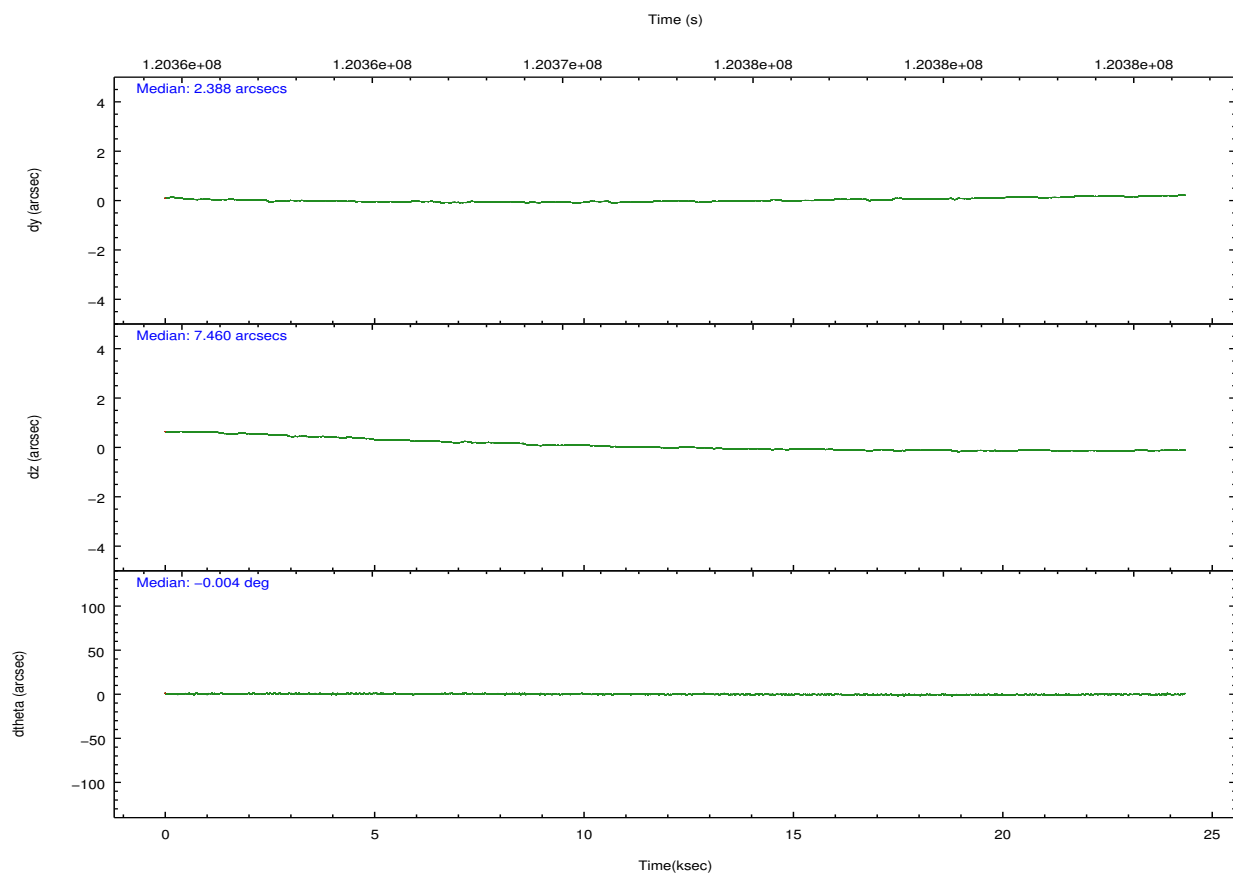
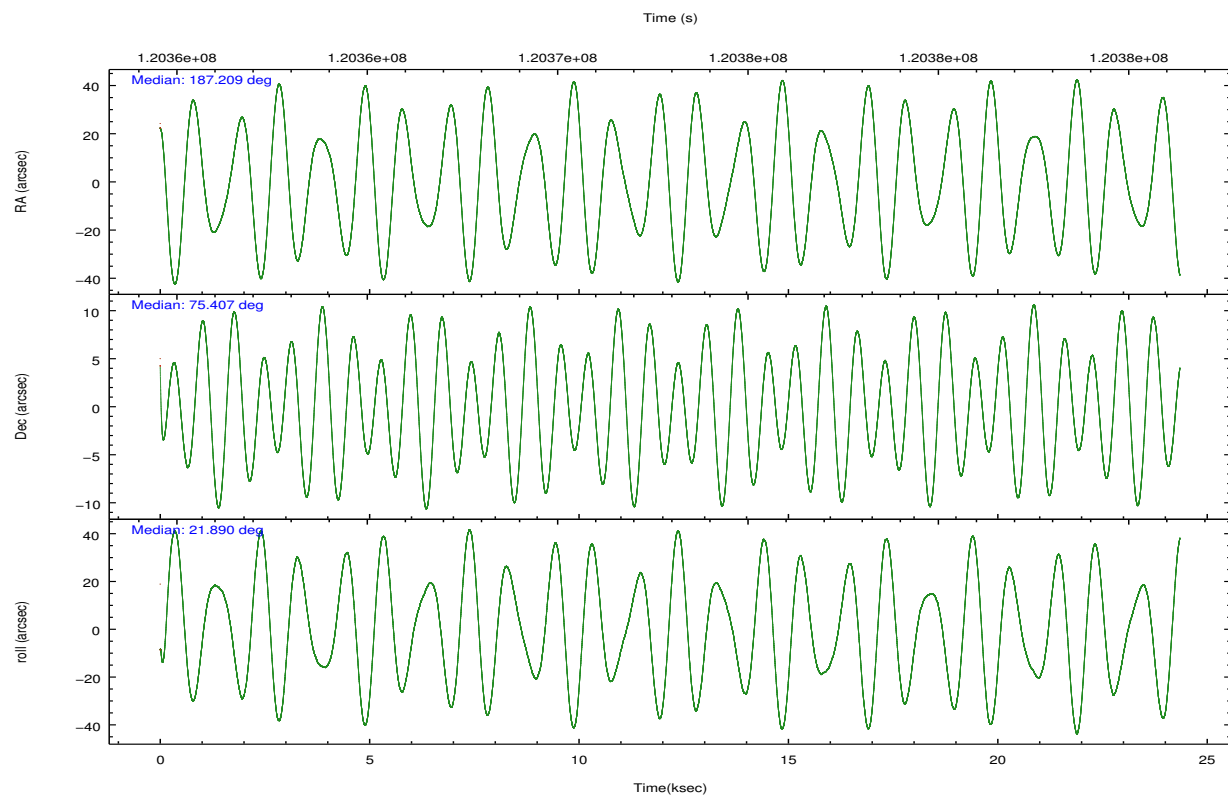
	ccd 2	ccd 3	ccd 5	ccd 6	ccd 7	ccd 8		ccd 2	ccd 3	ccd 5	ccd 6	ccd 7	ccd 8
level 1 events	177132	170163	250768	173770	224694	256589	grade 0 events	12822	12190	18326	13579	10890	37307
rejected events	148903	141952	124053	143939	117313	162158		7%	7%	7%	7%	4%	14%
rejected %	84%	83%	49%	82%	52%	63%	grade 1 events	99	62	589	104	204	278
								0%	0%	0%	0%	0%	0%
							grade 2 events	6670	7270	35777	7360	21050	14990
								3%	4%	14%	4%	9%	5%
							grade 3 events	1816	1910	6433	1923	9565	14383
								1%	1%	2%	1%	4%	5%
							grade 4 events	2015	1946	6428	2003	9484	12971
								1%	1%	2%	1%	4%	5%
							grade 5 events	5258	5965	17215	6513	19364	8698
								2%	3%	6%	3%	8%	3%
							grade 6 events	5175	5160	61132	5245	57446	15757
								2%	3%	24%	3%	25%	6%
							grade 7 events	143277	135660	104868	137043	96691	152205
								80%	79%	41%	78%	43%	59%

2.2 Compared Parameters

Parameter	Planned	Actual	Parameter	Planned	Actual
Instrument	ACIS	ACIS	Obspar format version number	7	7
Detector	ACIS-235678	ACIS-235678	Obspar file type	PREDICTED	ACTUAL
Grating	NONE	NONE	Obspar update status	NONE	UPDATED
Data mode	VFAINT	VFAINT	Number of optional ACIS chips dropped	0	0
Observation mode	POINTING	POINTING	On-chip summing requested	N	N
[deg] Pointing RA	187.142633	187.2082916541703	Subarray requested	NONE	NONE
[deg] Pointing Dec	75.384924	75.4066054412059	Alternating exposures requested	N	N
[deg] Pointing Roll	21.809765	21.90286245905138	[s] Primary exposure time	0.000000	3.2
[mm] SIM focus pos	-0.684267	-0.6828225247311905			
[mm] SIM defocus	0	0.001444936568705701			
[mm] SIM translation stage pos	-190.132523	-190.1400660498719			
[mm] SIM translation stage offset	0	0.00754346686406393			
[s] Observation start time (MET)	120360925.184000	120359723.68968			
Observation start date	2001-10-25T01:34:21	2001-10-25T01:15:23			
[s] Observation end time (MET)	120385125.184000	120385584.95321			
Observation end date	2001-10-25T08:17:41	2001-10-25T08:26:24			
Read mode	TIMED	TIMED			

2.3 Aspect



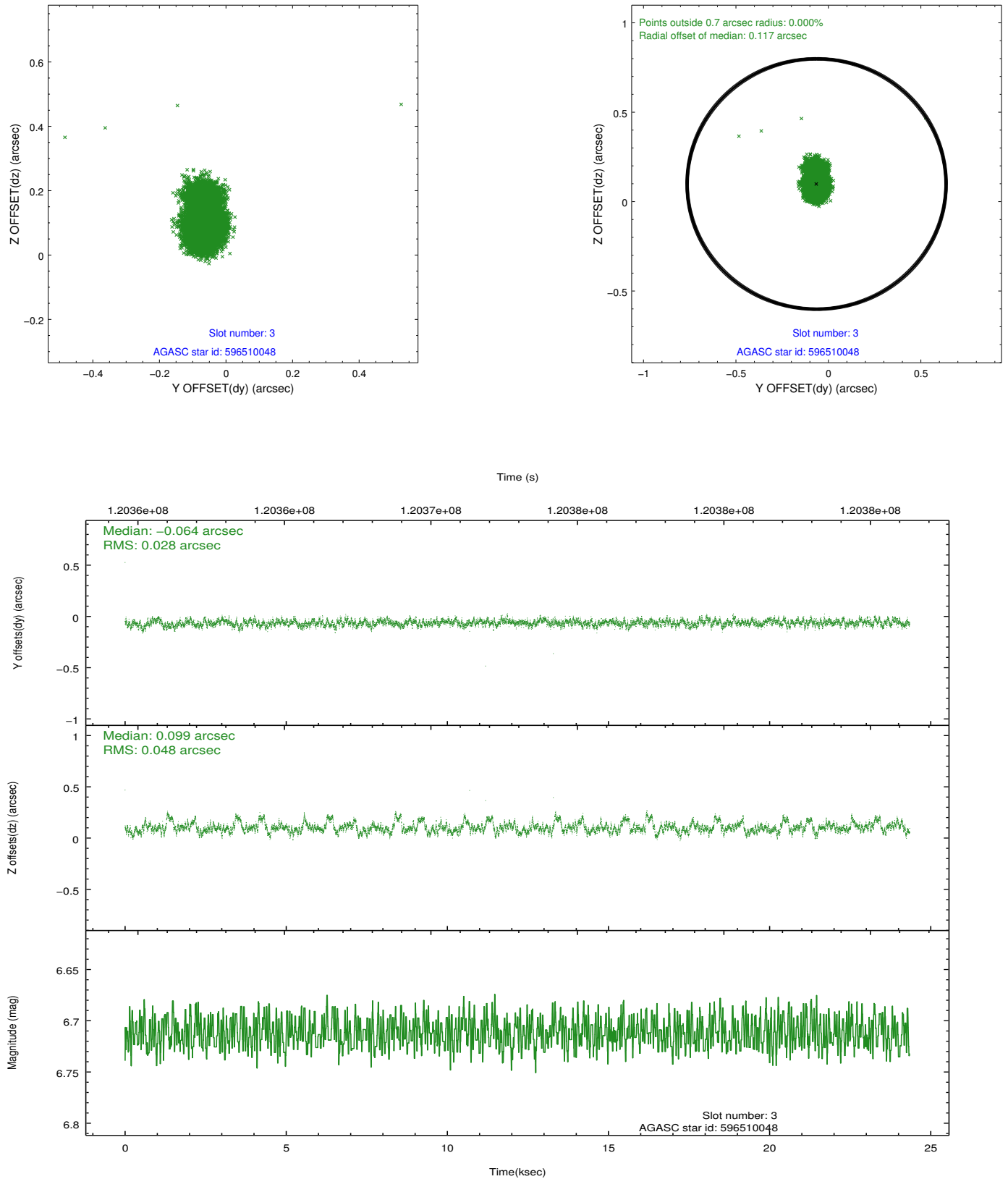


Slot Statistics

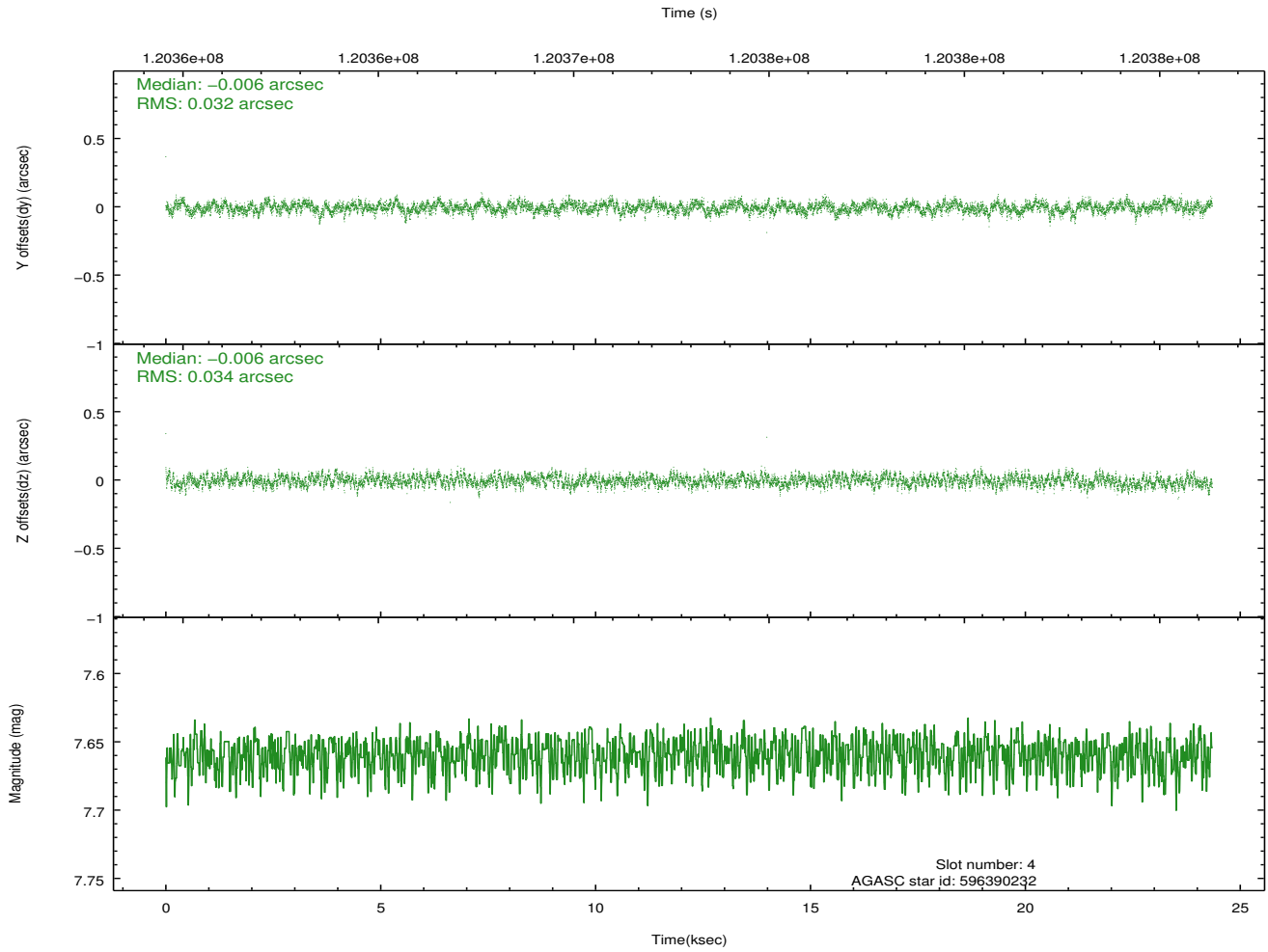
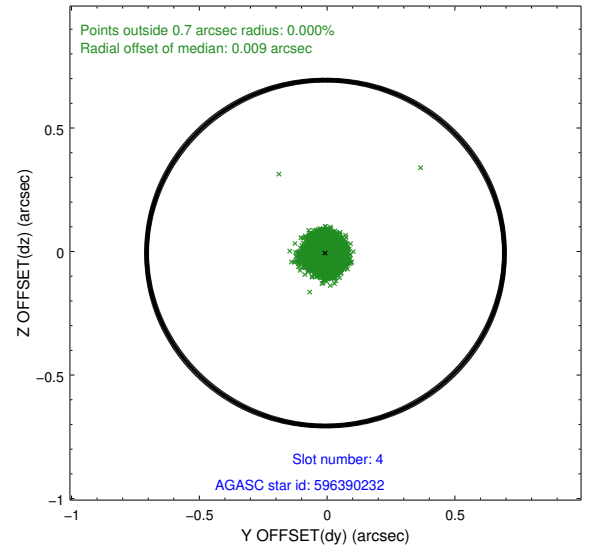
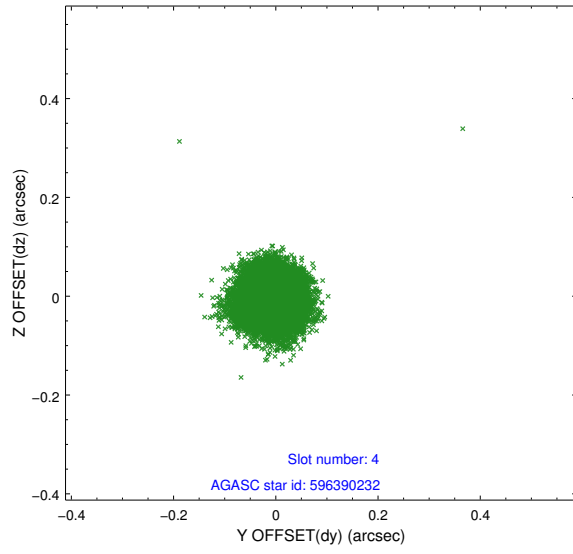
slot	status	id	mag	n_pts	med_dy	med_dz	dr1	dr2	ra	dec	mean_y	mean_z
0	FID	ACIS-S-2	7.11	5940	-0.014	-0.009	0.008	0.021	0.000000	0.000000	-755.06	-1728.74
1	FID	ACIS-S-4	7.20	5939	-0.037	0.009	0.007	0.025	0.000000	0.000000	2158.14	179.62
2	FID	ACIS-S-5	7.24	5940	0.021	0.008	0.008	0.016	0.000000	0.000000	-1807.70	173.45
3	GUIDE	596510048	6.71	11879	-0.064	0.099	0.055	0.103	188.427937	75.212520	870.20	-1002.69
4	GUIDE	596390232	7.66	11876	-0.006	-0.006	0.051	0.079	186.553365	75.719145	-38.50	1313.87
5	GUIDE	596512320	8.46	11876	-0.074	-0.063	0.064	0.103	188.688284	76.018788	2101.44	1636.14
6	GUIDE	596521816	9.06	11876	0.040	0.027	0.100	0.165	190.182501	75.002368	2143.71	-2262.25
7	GUIDE	596378936	9.31	11869	0.103	-0.062	0.117	0.187	185.905753	75.866397	-361.80	2023.45

2.4 Star Slots

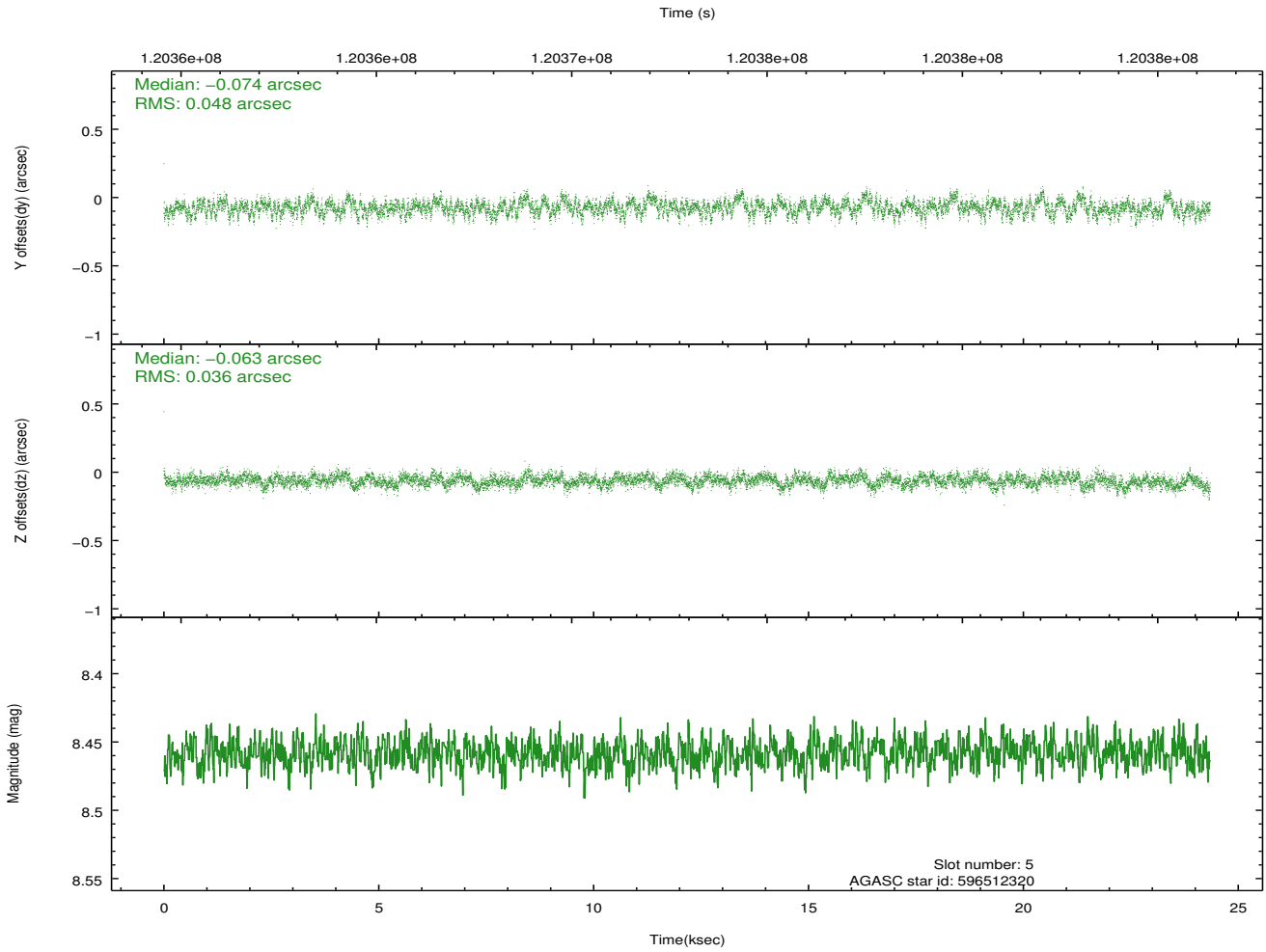
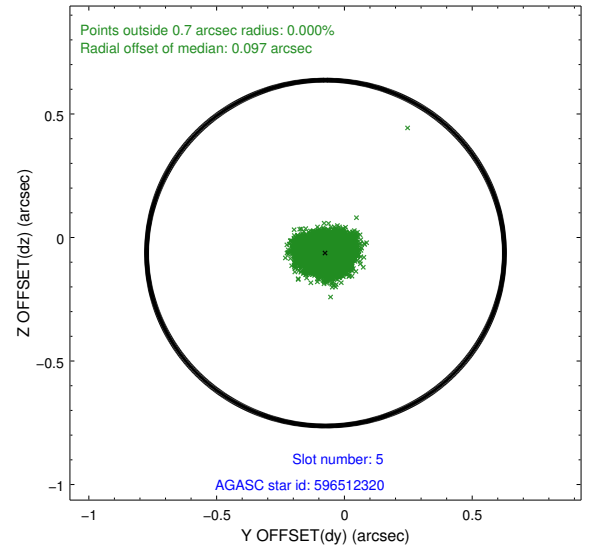
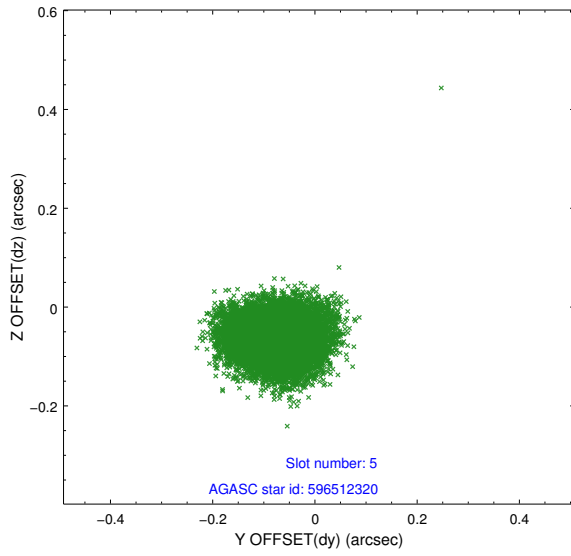
2.4.1 Slot 3



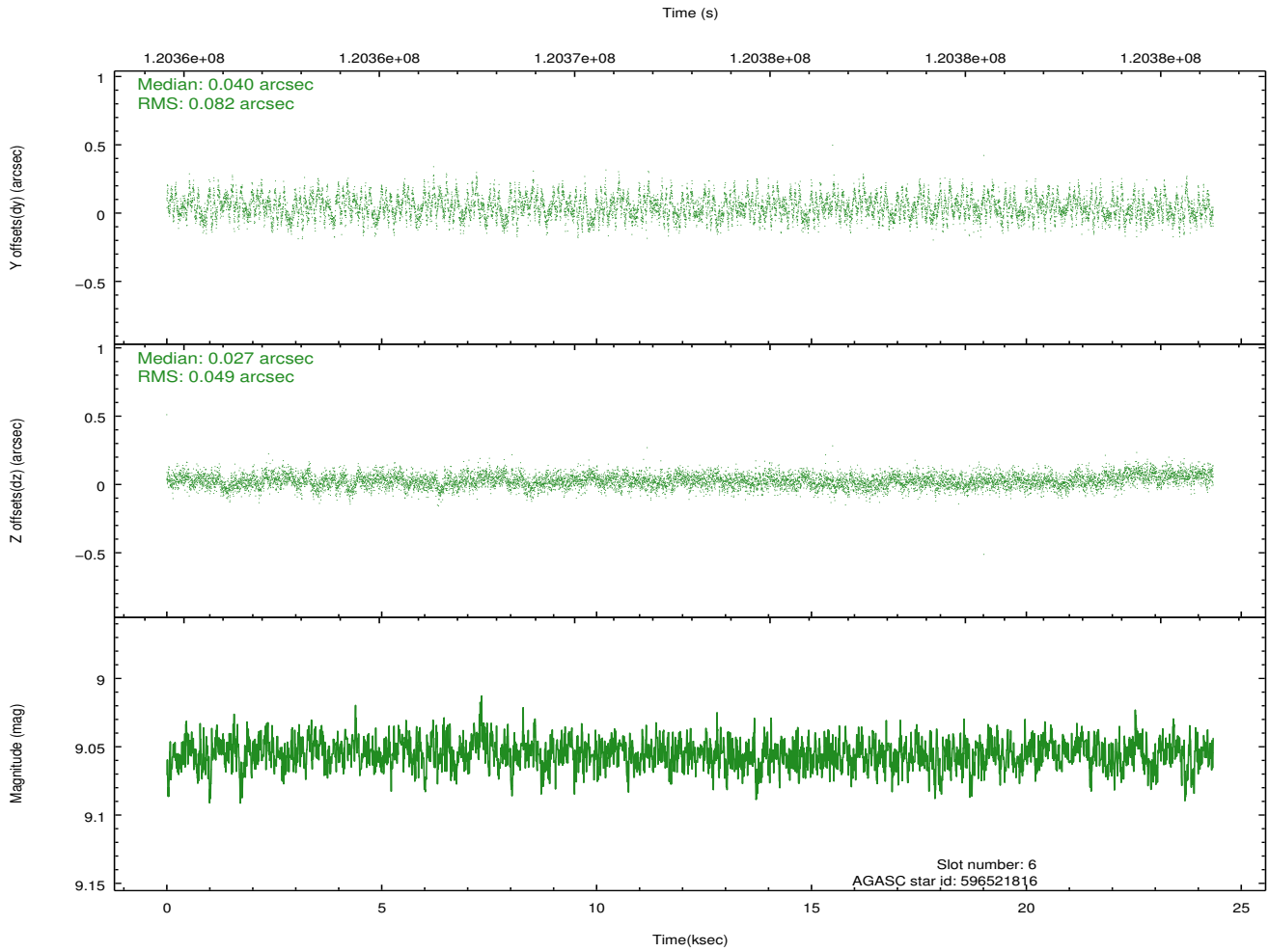
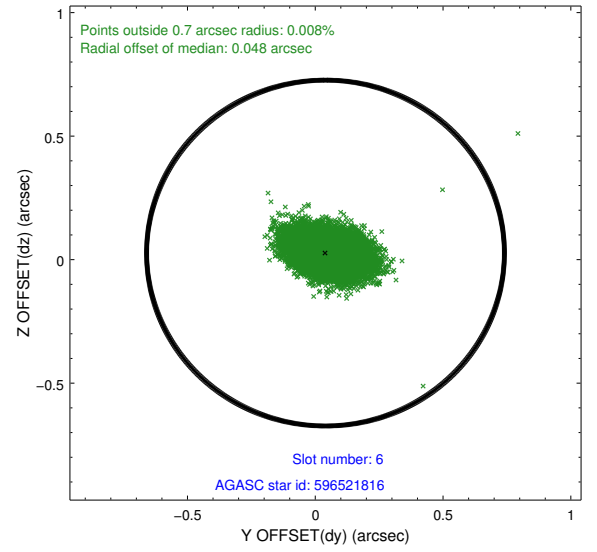
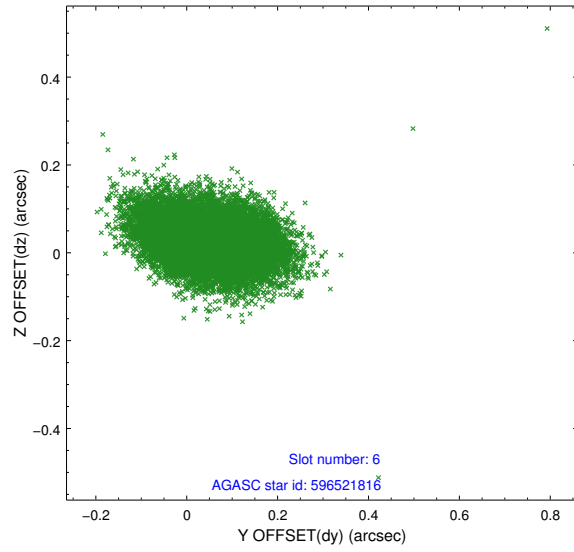
2.4.2 Slot 4



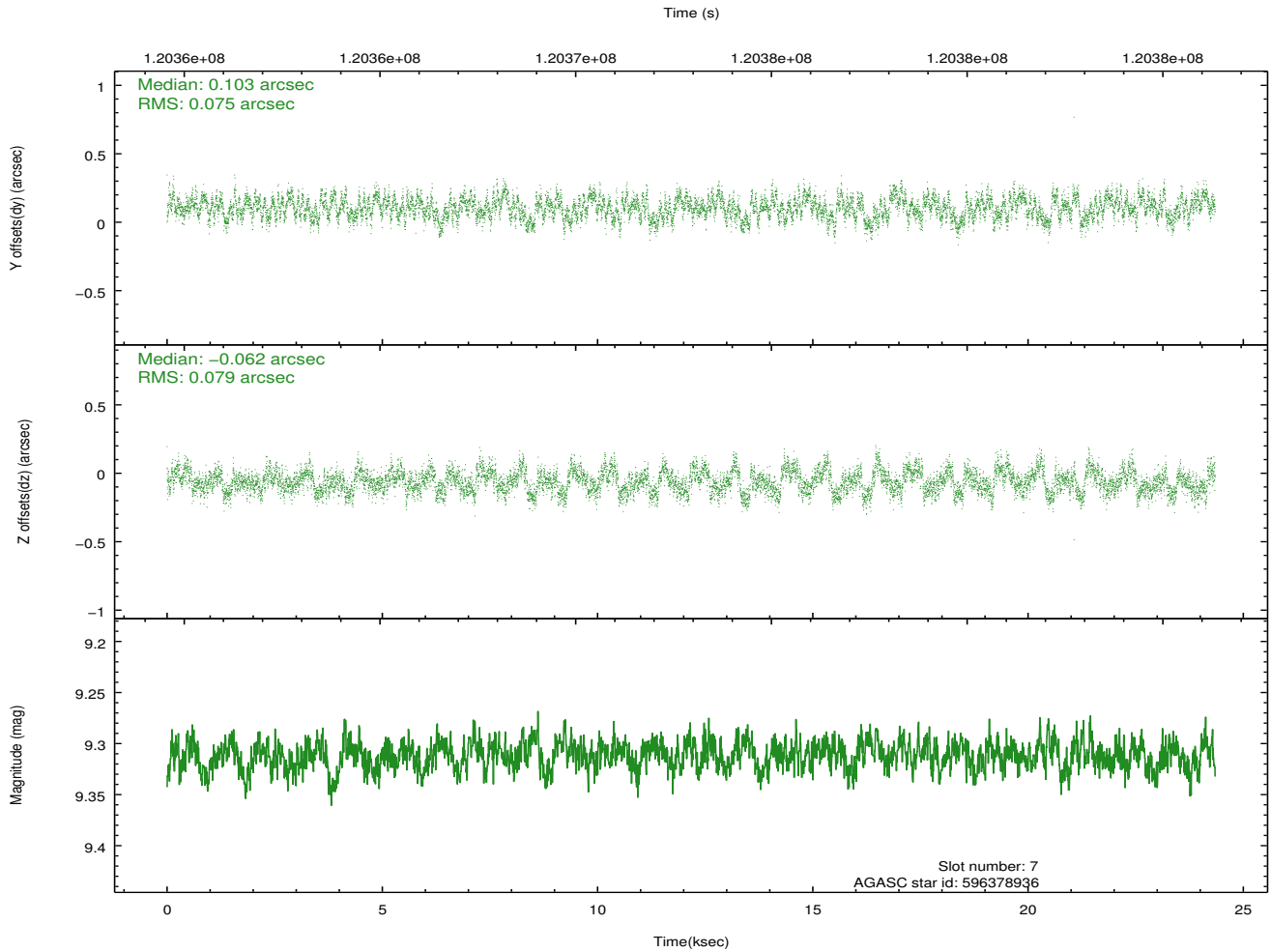
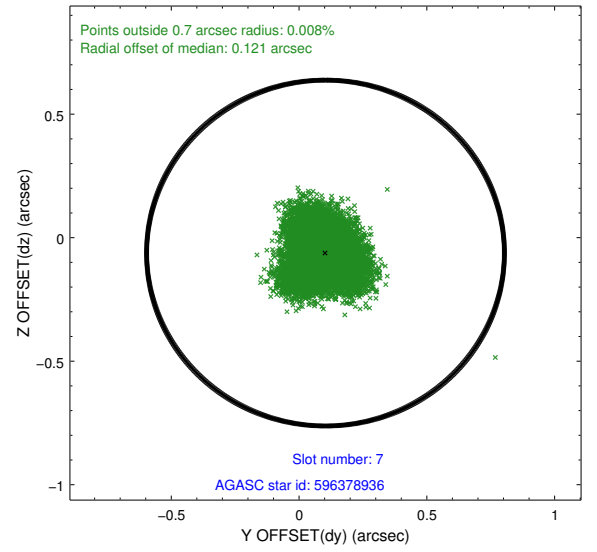
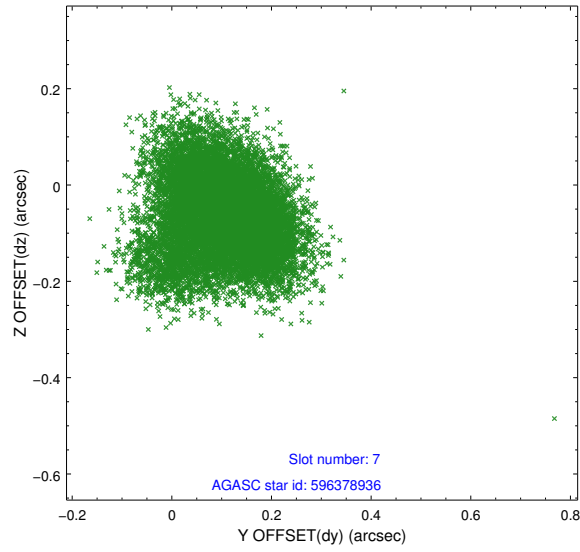
2.4.3 Slot 5



2.4.4 Slot 6

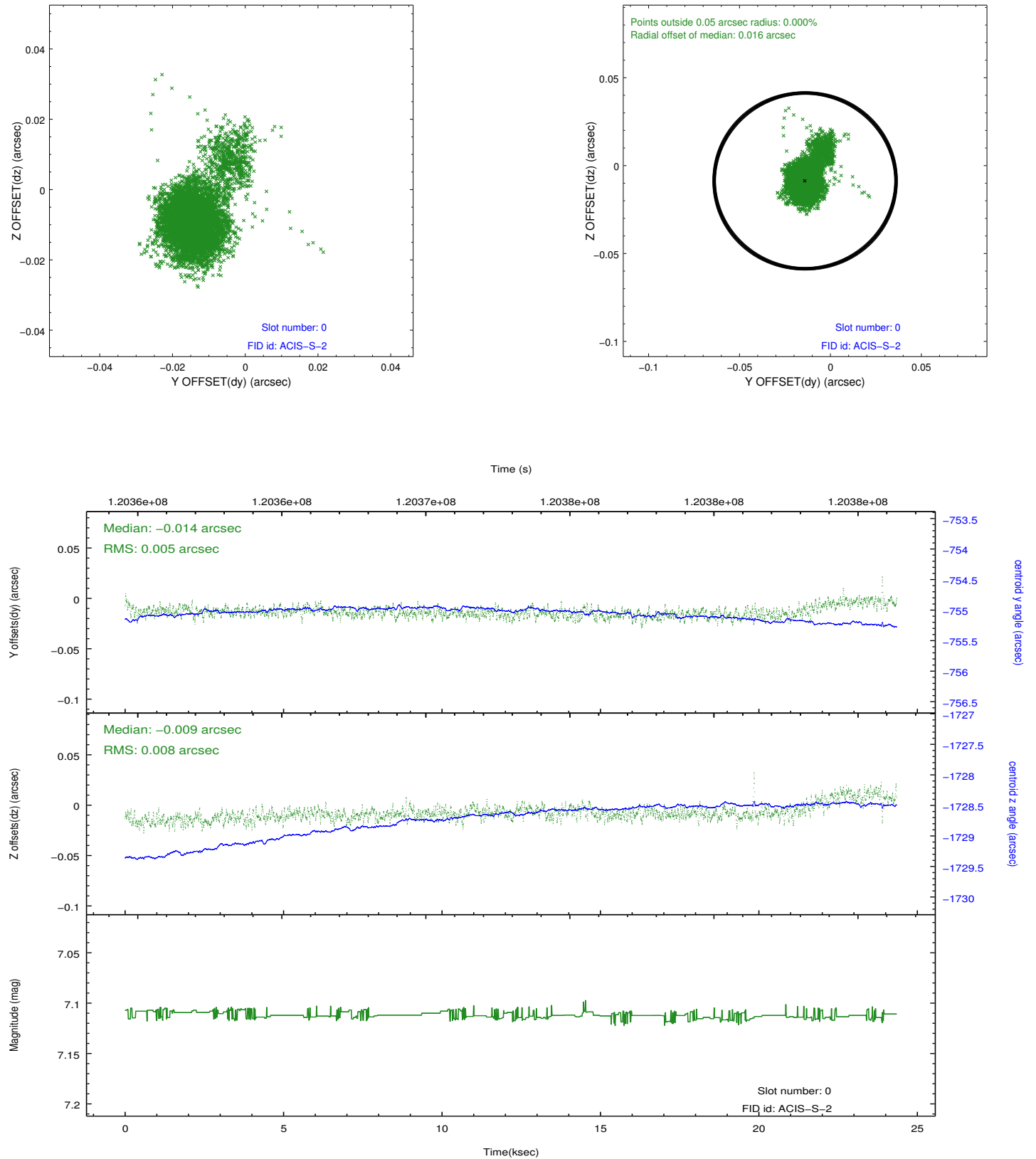


2.4.5 Slot 7

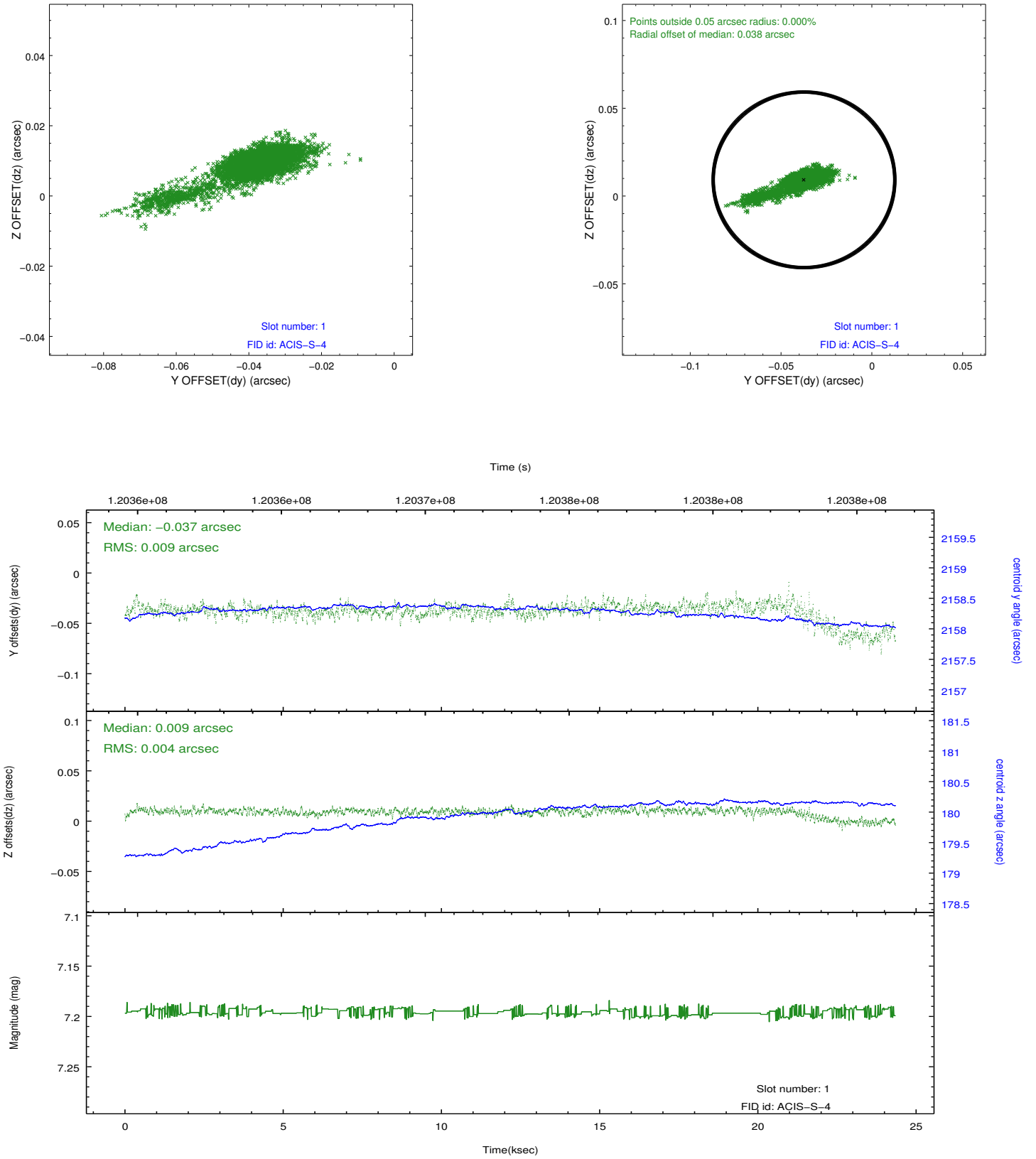


2.5 FID Slots

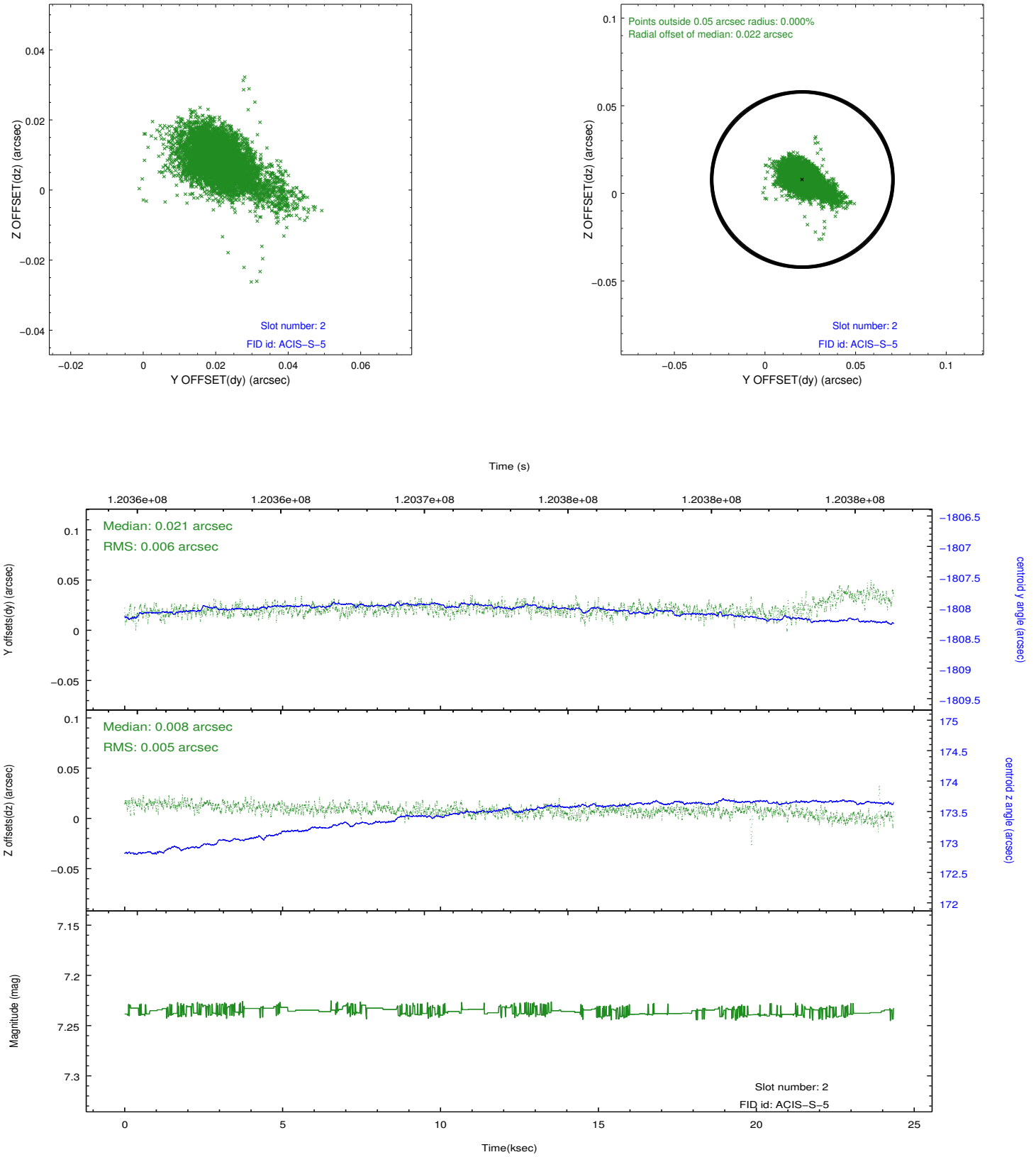
2.5.1 Slot 0



2.5.2 Slot 1



2.5.3 Slot 2



A Summary

A.1 Status

V&V Scientist	Jen Lauer
V&V Date (YYYY-MM-DD)	2012.09.27
V&V Edition	1
V&V Disposition and Status	OK
V&V Charge Time	24.342

A.2 Comments