

V&V Reference Report

L2 ASCDS Version : 7.6.10

Observation 2484 - L2 Version 001
Chandra X-Ray Center

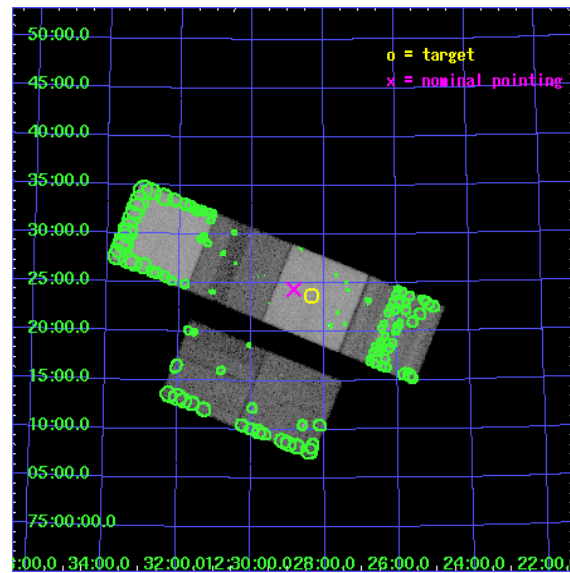
L2 Processing Date : Jan 11 2007

Contents

1	Front	2
2	OBI	3
2.1	OBI	3
2.1.1	Images	3
2.1.2	Bias	3
2.1.3	Parameters	4
2.1.4	Events	4
2.2	Compared Parameters	5
2.3	Aspect	6
2.4	Star Slots	9
2.4.1	Slot 3	9
2.4.2	Slot 4	10
2.4.3	Slot 5	11
2.4.4	Slot 6	12
2.4.5	Slot 7	13
2.5	FID Slots	14
2.5.1	Slot 0	14
2.5.2	Slot 1	15
2.5.3	Slot 2	16
3	Point Sources	17
A	Summary	18
A.1	Status	18
A.2	Comments	18

1 Front

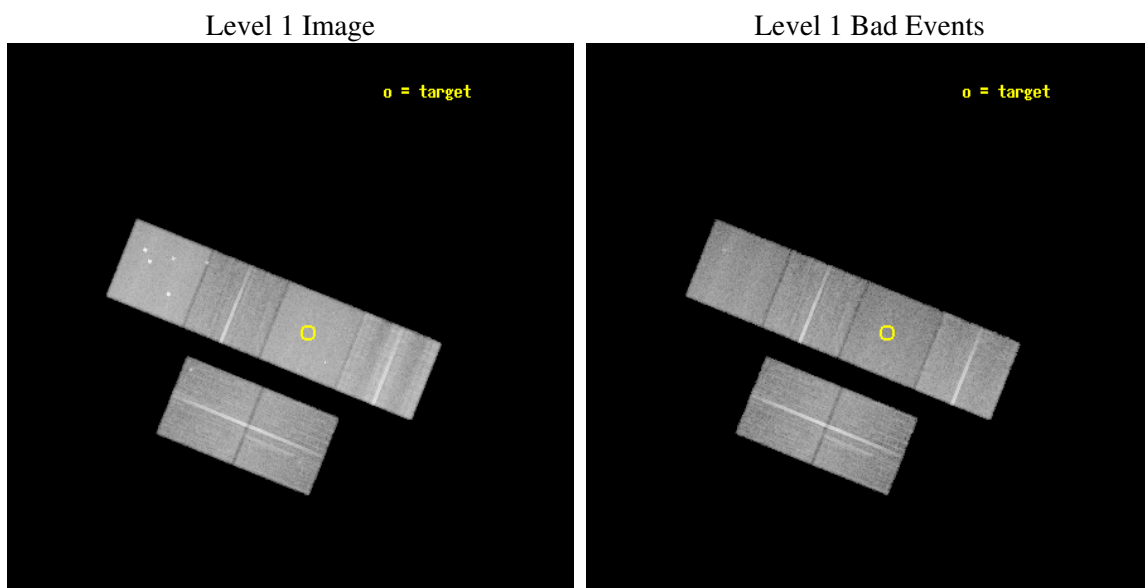
seq_num	900080
obs_id	2484
title	DIFFUSE X-RAY EMISSION FROM THE MISSING BARYONS IN THE UNIVERSE
observer	DR. Joel Bregman
object	CHVC125
dtcycle	0
cycle	P
ra_targ	187.083333
dec_targ	75.395833
ra_nom	187.20829165417
dec_nom	75.406605441206
roll_nom	21.902862459051
revision	2
ontime	24342.400022671
livetime	24034.16189635
ontime2	24342.400022671
ontime3	24342.400022671
ontime5	24342.400022671
ontime6	24342.400022671
ontime7	24342.400022671
ontime8	24342.400022671
l2events	340816



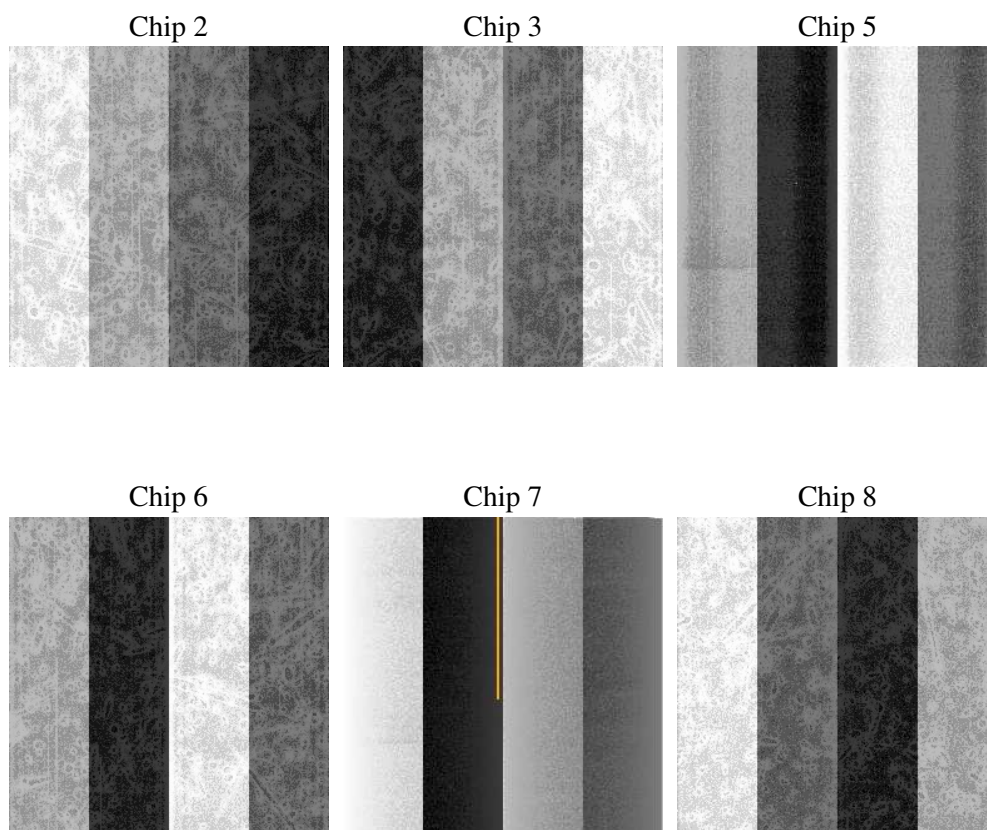
2 OBI

2.1 OBI

2.1.1 Images



2.1.2 Bias



2.1.3 Parameters

obi_num	1
ascdsver	7.6.10
caldsver	3.3.0
date	2007-01-11T02:49:43
revision	2

sched_exp_time	24200.000000
ontime	24342.400022671
ontime2	24342.400022671
ontime3	24342.400022671
ontime5	24342.400022671
ontime6	24342.400022671
ontime7	24342.400022671
ontime8	24342.400022671
l1events	1253116

2.1.4 Events

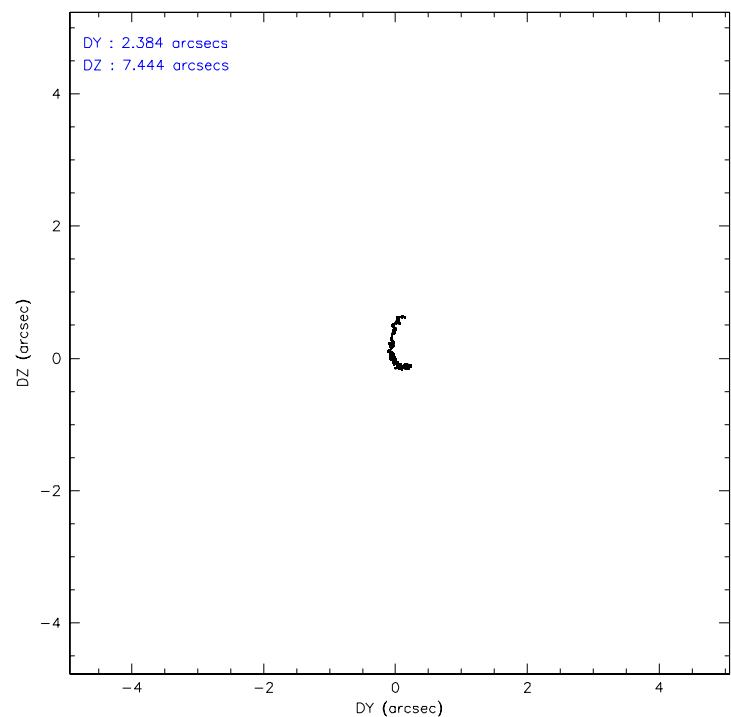
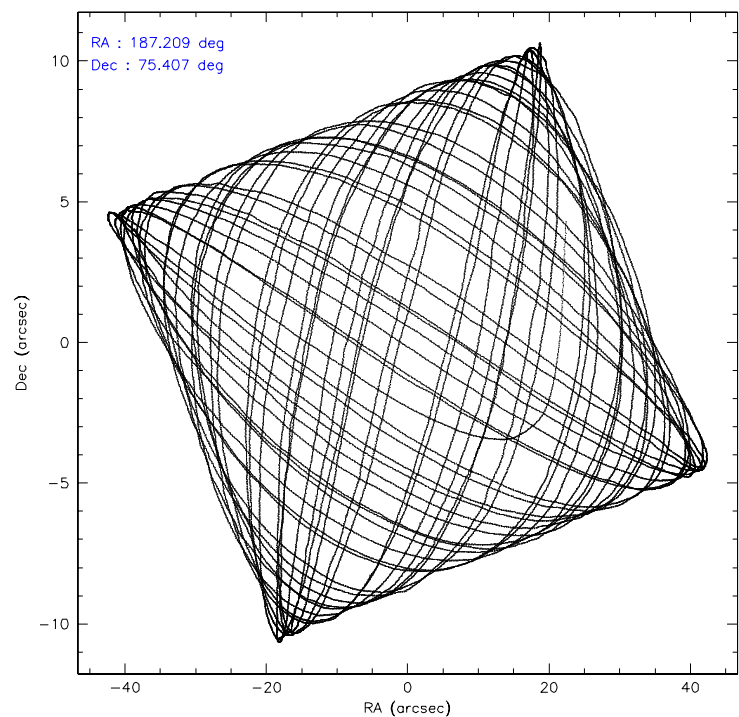
	ccd 2	ccd 3	ccd 5	ccd 6	ccd 7	ccd 8
level 1 events	177132	170163	250768	173770	224694	256589
rejected events	148905	141950	124049	143939	117311	162159
rejected %	84%	83%	49%	82%	52%	63%

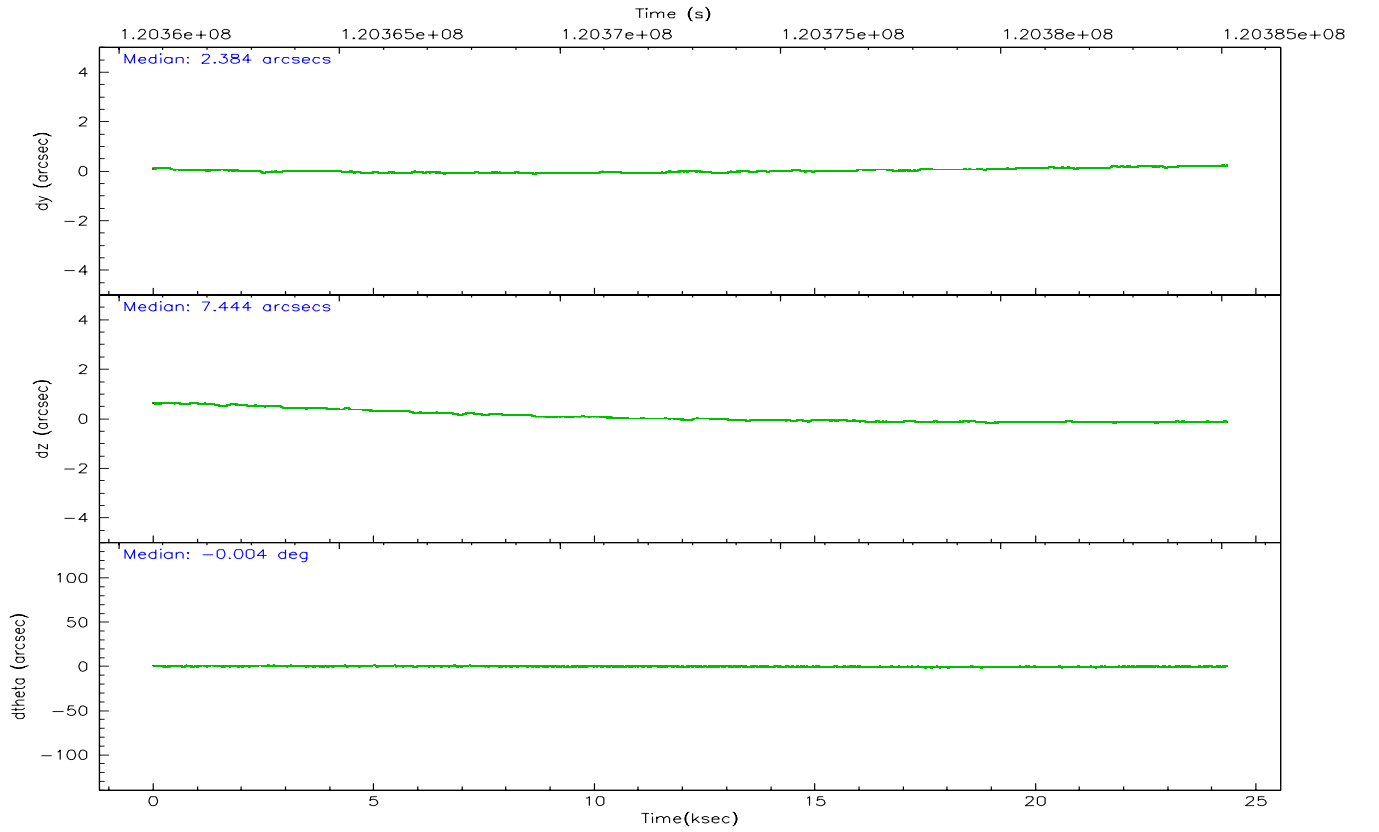
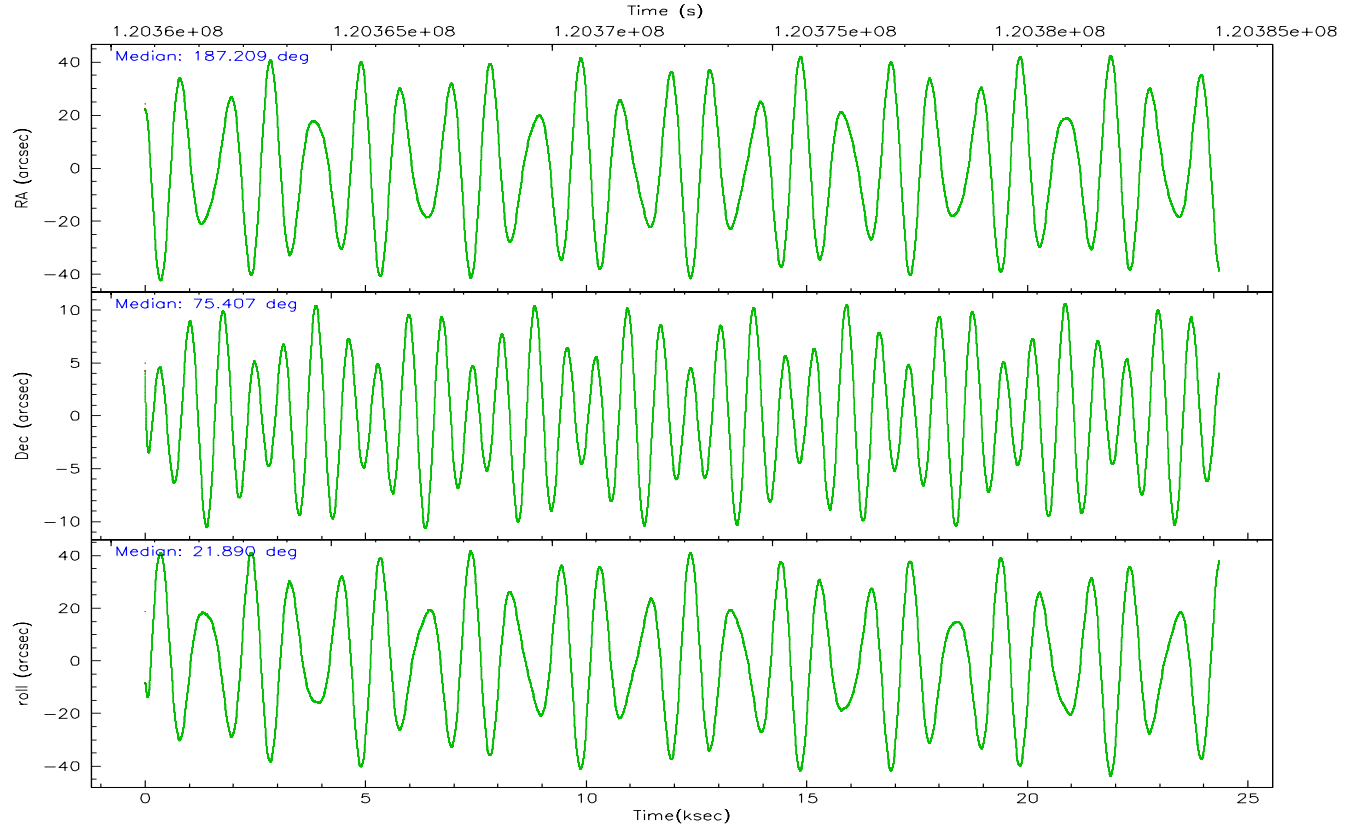
	ccd 2	ccd 3	ccd 5	ccd 6	ccd 7	ccd 8
grade 0 events	12825	12195	18316	13585	10888	37314
	7%	7%	7%	7%	4%	14%
grade 1 events	99	62	589	104	204	278
	0%	0%	0%	0%	0%	0%
grade 2 events	6667	7265	35786	7354	21051	14983
	3%	4%	14%	4%	9%	5%
grade 3 events	1816	1913	6418	1923	9562	14383
	1%	1%	2%	1%	4%	5%
grade 4 events	2015	1946	6414	2004	9480	12972
	1%	1%	2%	1%	4%	5%
grade 5 events	5262	5966	17196	6518	19356	8699
	2%	3%	6%	3%	8%	3%
grade 6 events	5172	5158	61154	5241	57448	15756
	2%	3%	24%	3%	25%	6%
grade 7 events	143276	135658	104895	137041	96705	152204
	80%	79%	41%	78%	43%	59%

2.2 Compared Parameters

Parameter	Planned	Actual	Parameter	Planned	Actual
Instrument	ACIS	ACIS	Obspar format version number	6	6
Detector	ACIS-235678	ACIS-235678	Obspar file type	PREDICTED	ACTUAL
Grating	NONE	NONE	Obspar update status	NONE	UPDATED
Data mode	VFAINT	VFAINT	Number of optional ACIS chips dropped	0	0
Observation mode	POINTING	POINTING	On-chip summing requested	N	N
Pointing RA	187.142633	187.2082916541702	Subarray requested	NONE	NONE
Pointing Dec	75.384924	75.40660544120588	Alternating exposures requested	N	N
Pointing Roll	21.809765	21.90286245905148	Primary exposure time	0.000000	3.2
SIM focus pos (mm)	-0.684267	-0.6828225247311905			
SIM defocus (mm)	0	0.001444936568705701			
SIM translation stage pos (mm)	-190.132523	-190.1400660498719			
SIM translation stage offset (mm)	0	0.00754346686406393			
Observation start time	120360925.184000	120359723.68968			
Observation start date	2001-10-25T01:34:21	2001-10-25T01:15:23			
Observation end time	120385125.184000	120385584.95321			
Observation end date	2001-10-25T08:17:41	2001-10-25T08:26:24			
Read mode	TIMED	TIMED			

2.3 Aspect



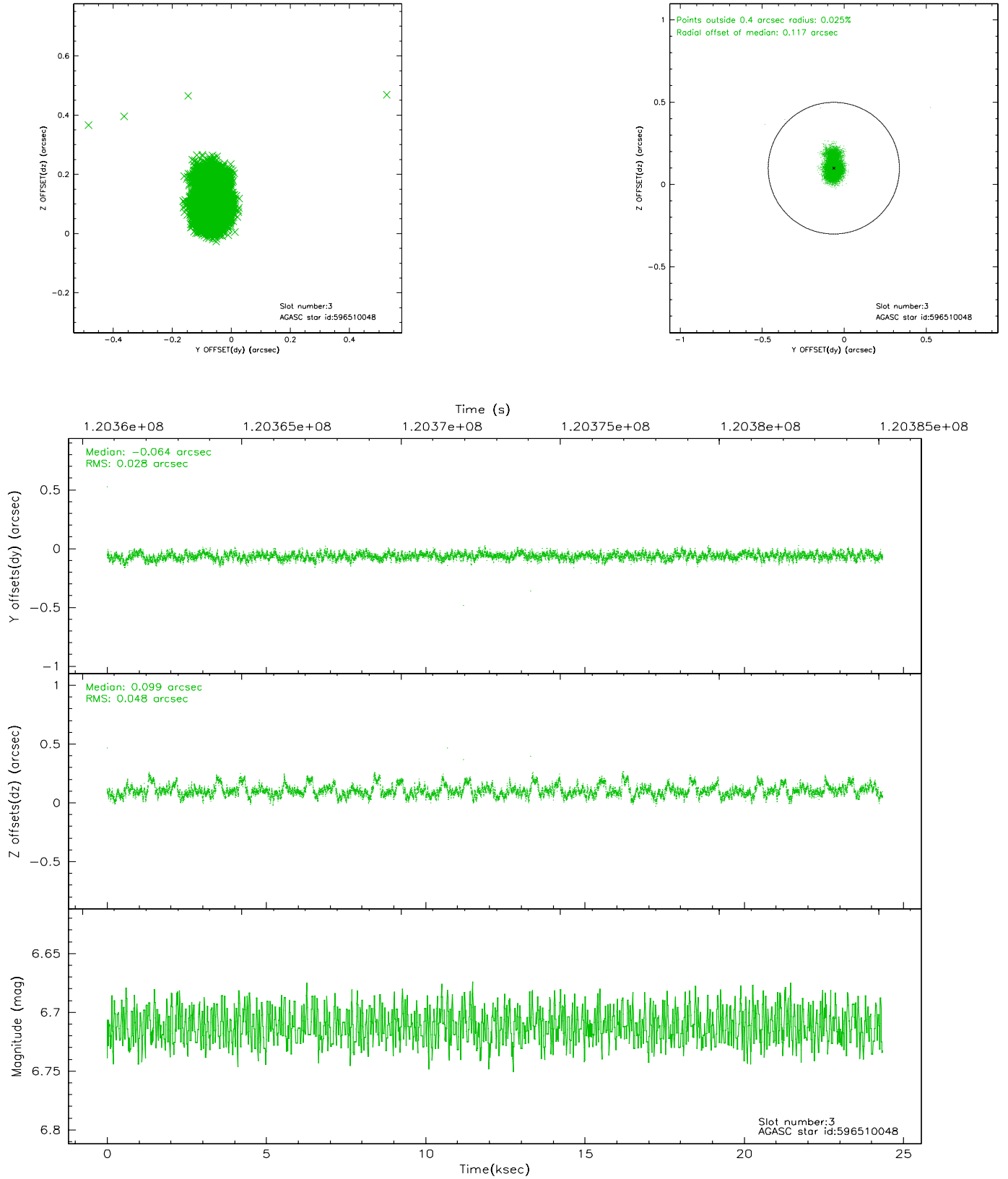


Slot Statistics

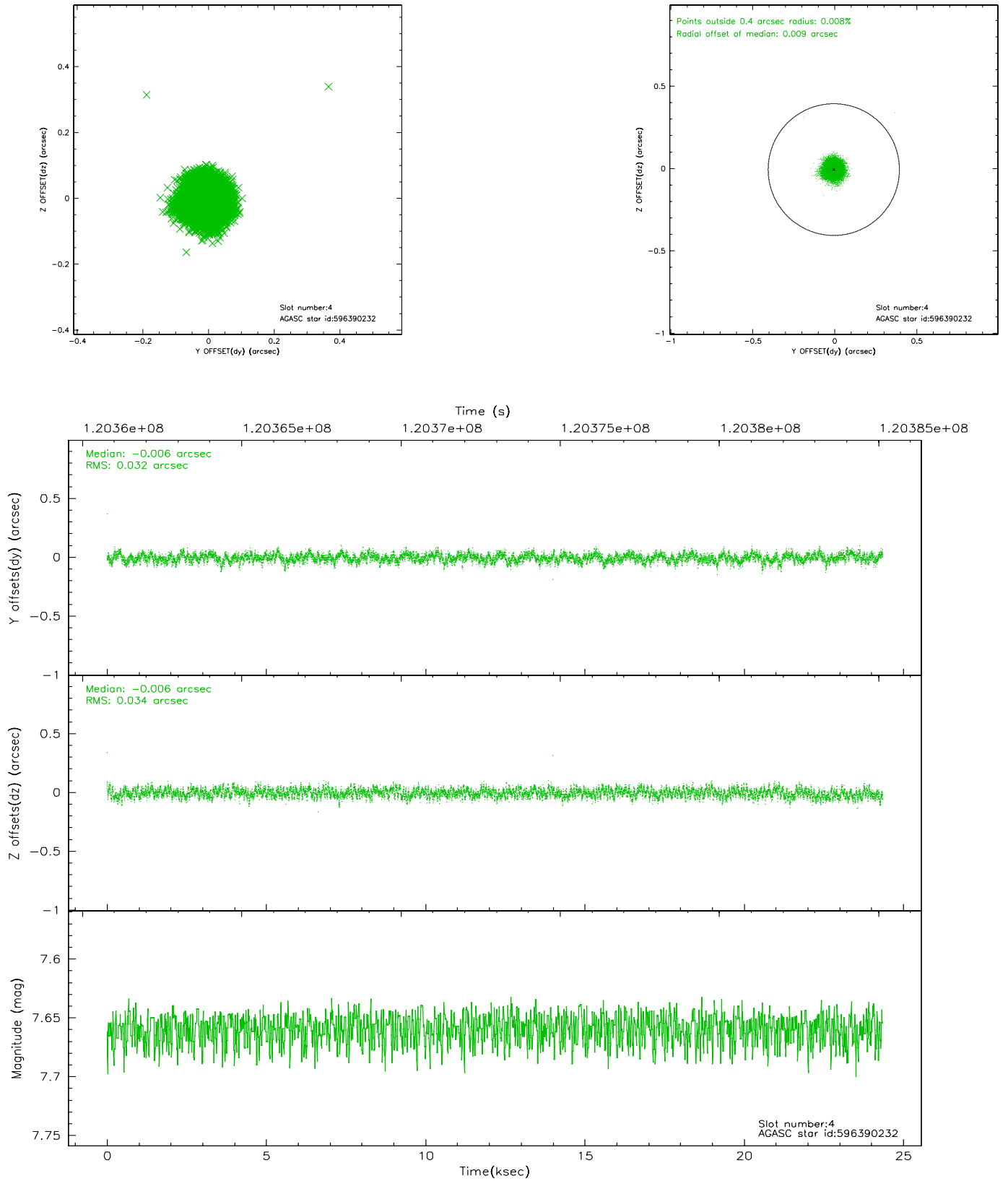
slot	status	id	mag	n_pts	med_dy	med_dz	dr1	dr2	ra	dec	mean_y	mean_z
0	FID	ACIS-S-2	7.11	5940	-0.002	0.015	0.008	0.020	0.000000	0.000000	-755.05	-1728.70
1	FID	ACIS-S-4	7.20	5939	-0.080	-0.003	0.007	0.025	0.000000	0.000000	2158.10	179.62
2	FID	ACIS-S-5	7.24	5940	0.052	-0.004	0.008	0.015	0.000000	0.000000	-1807.66	173.46
3	GUIDE	596510048	6.71	11879	-0.064	0.099	0.055	0.103	188.427937	75.212520	870.20	-1002.69
4	GUIDE	596390232	7.66	11876	-0.006	-0.006	0.051	0.079	186.553365	75.719145	-38.50	1313.87
5	GUIDE	596512320	8.46	11876	-0.074	-0.063	0.064	0.103	188.688284	76.018788	2101.44	1636.14
6	GUIDE	596521816	9.06	11876	0.040	0.027	0.100	0.165	190.182501	75.002368	2143.71	-2262.25
7	GUIDE	596378936	9.31	11869	0.103	-0.062	0.117	0.187	185.905753	75.866397	-361.80	2023.45

2.4 Star Slots

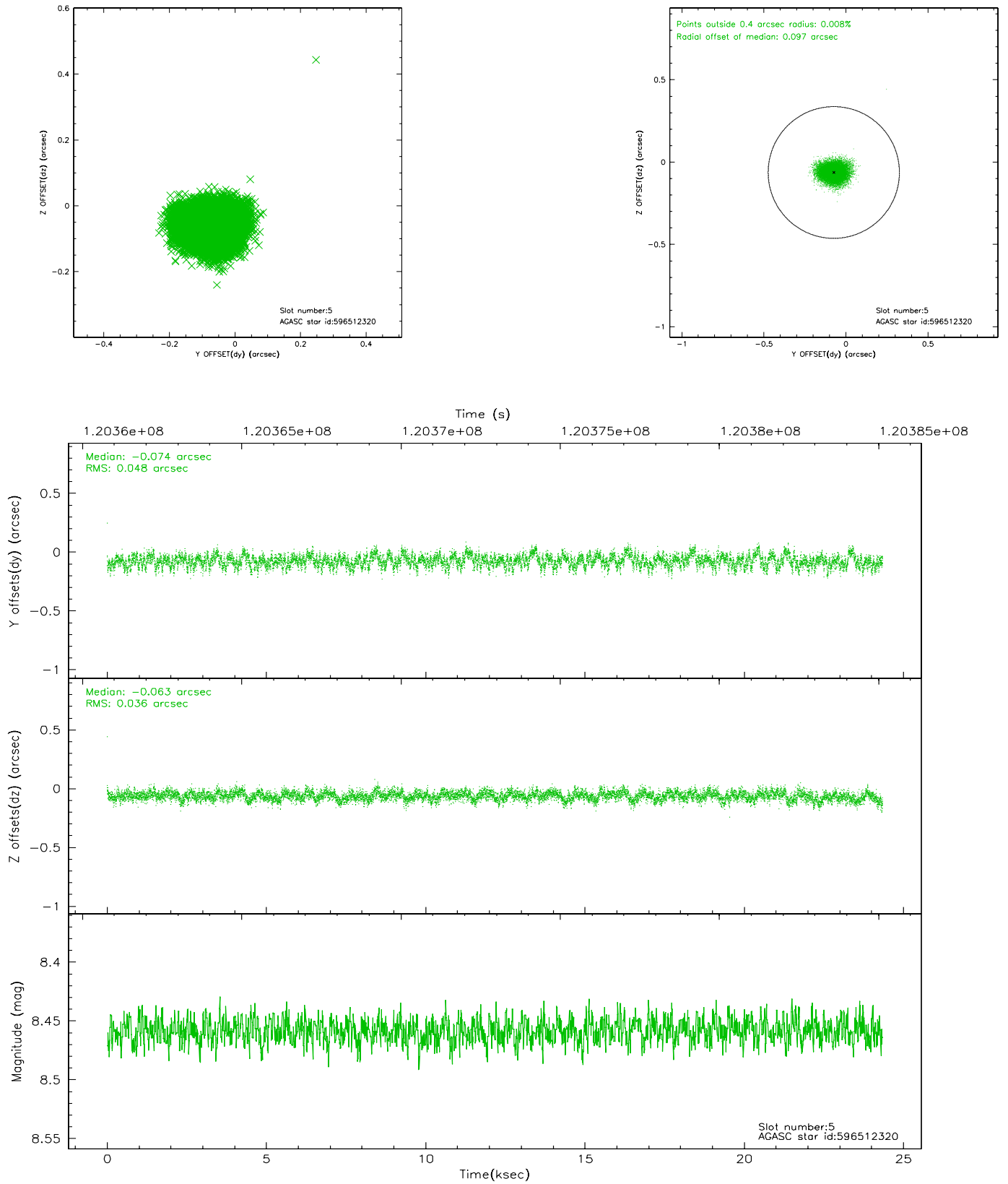
2.4.1 Slot 3



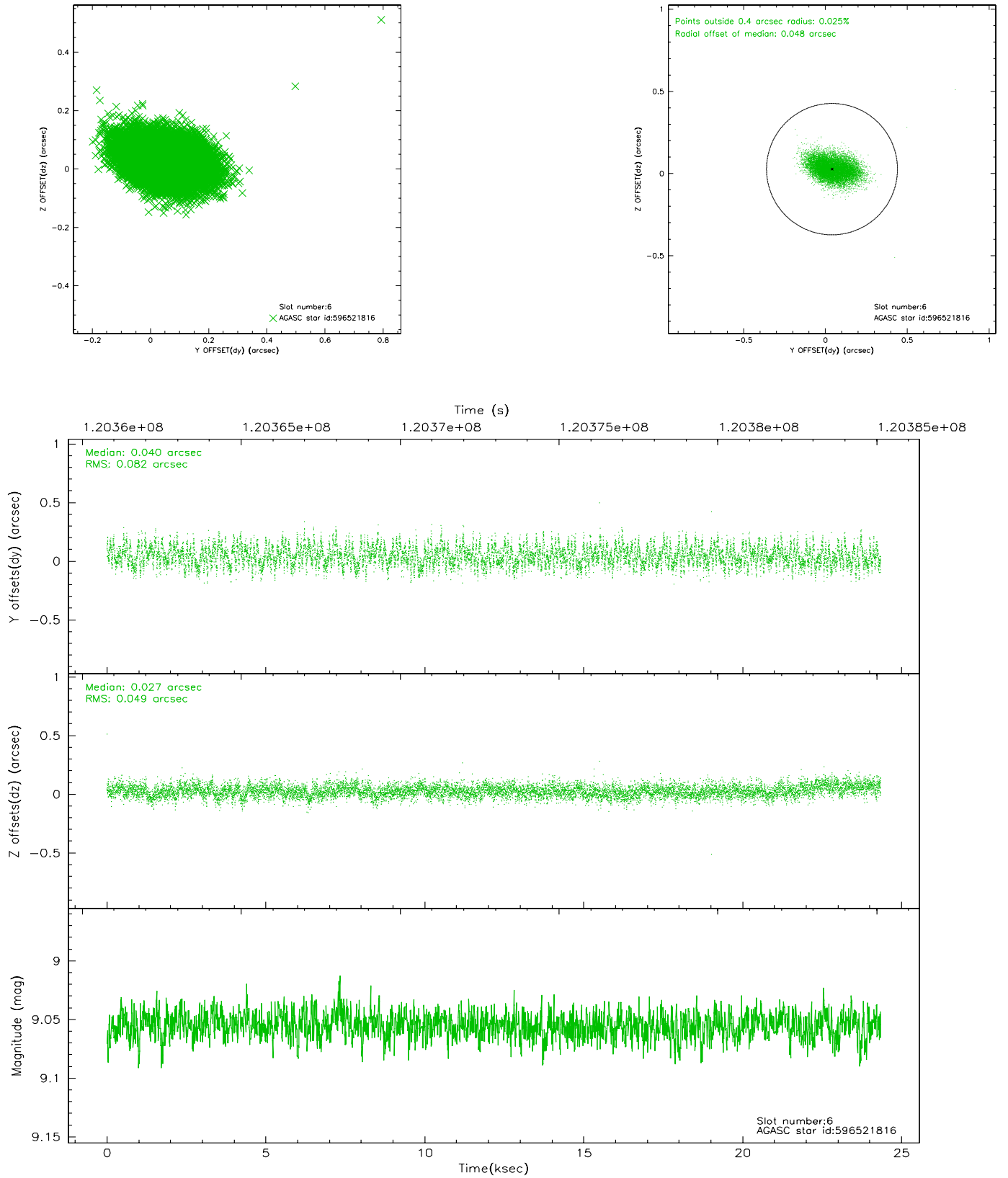
2.4.2 Slot 4



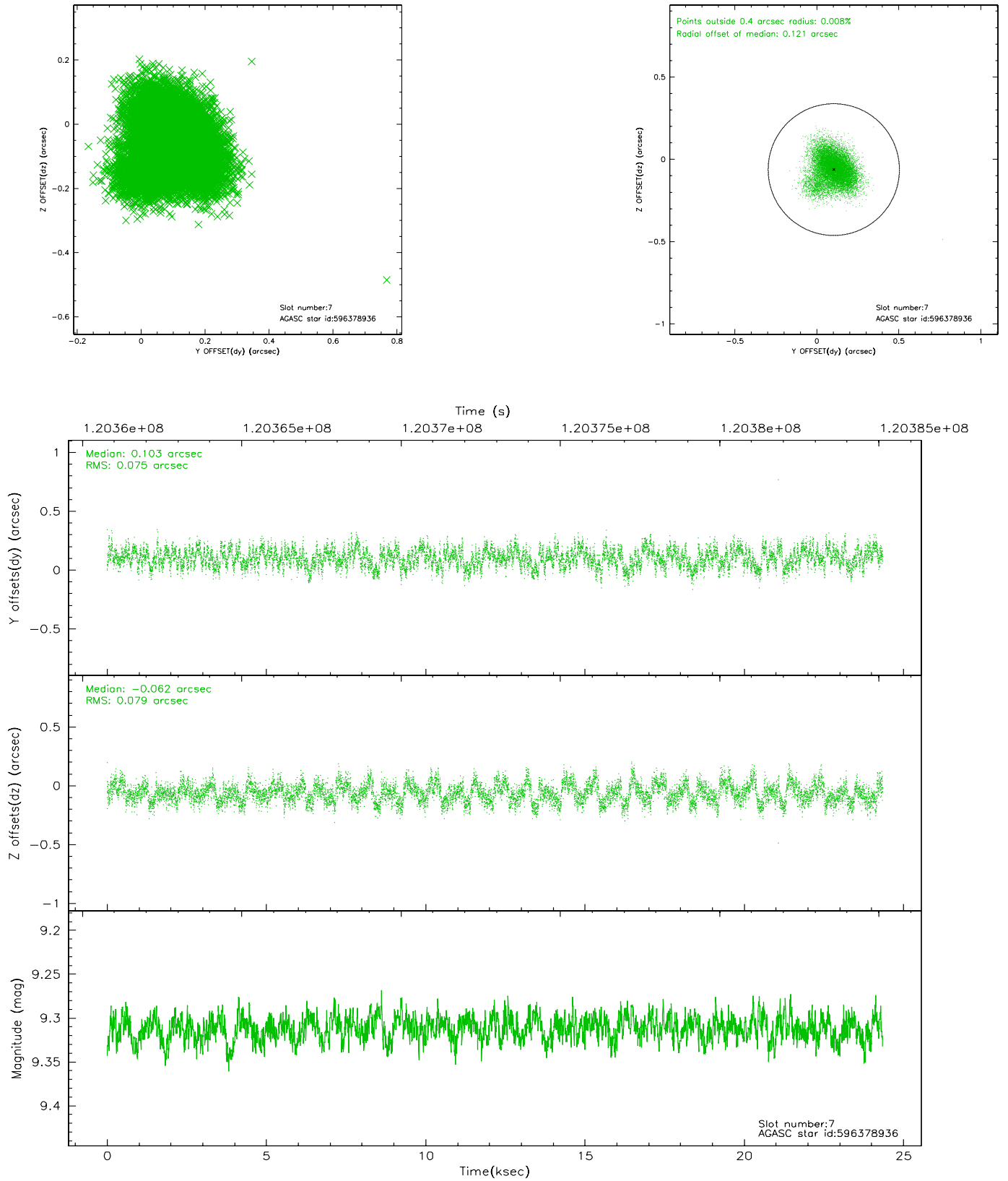
2.4.3 Slot 5



2.4.4 Slot 6

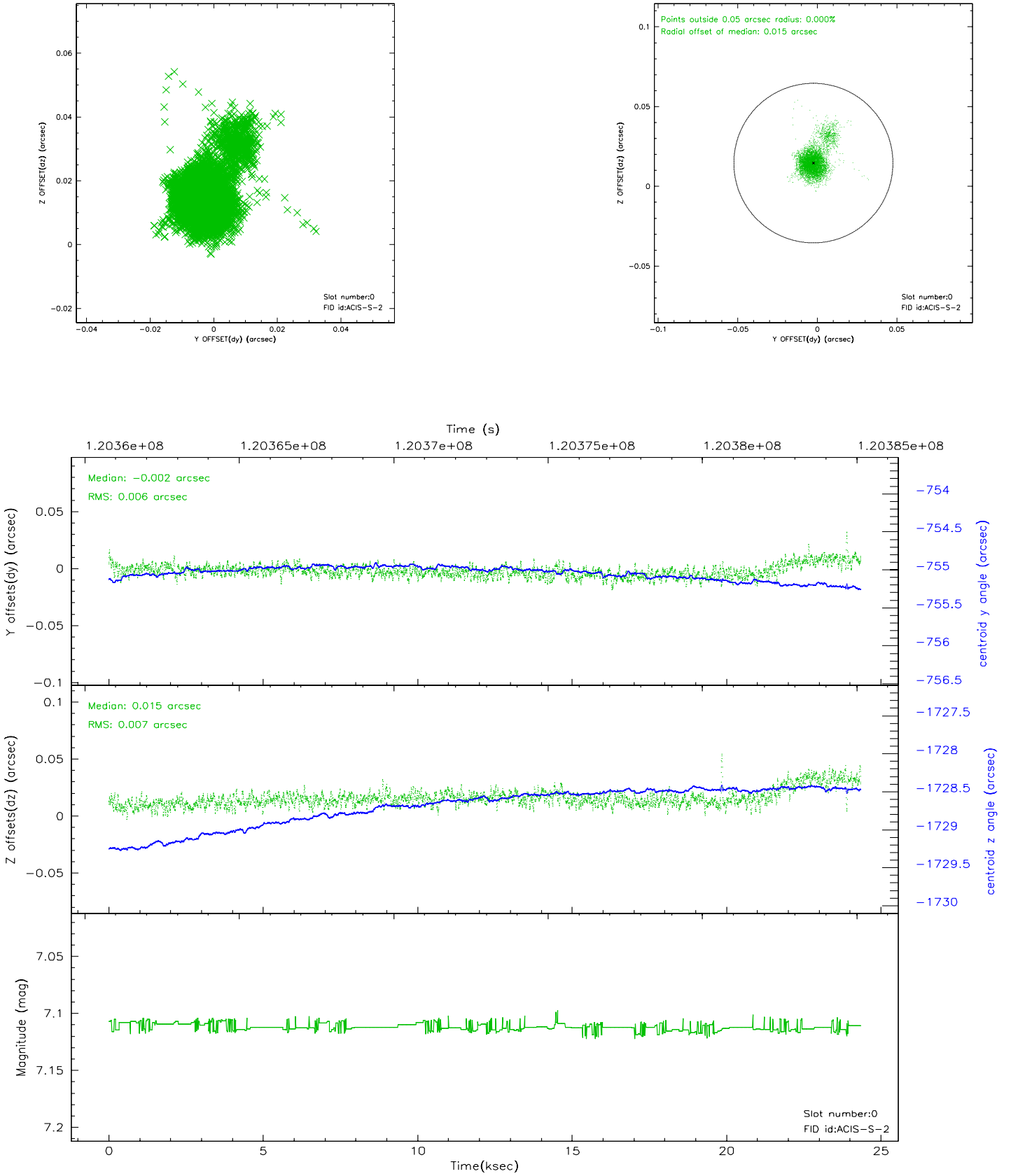


2.4.5 Slot 7

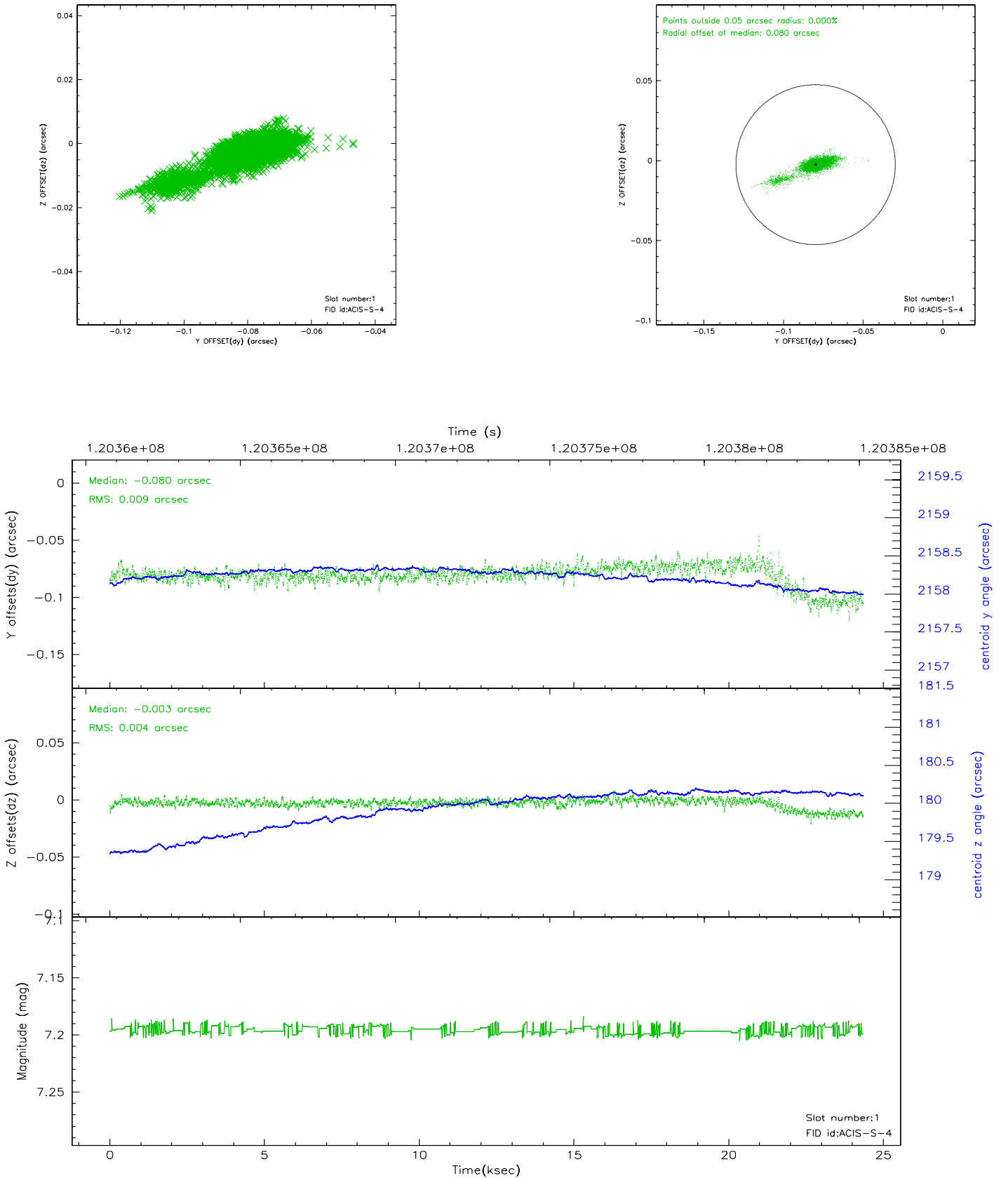


2.5 FID Slots

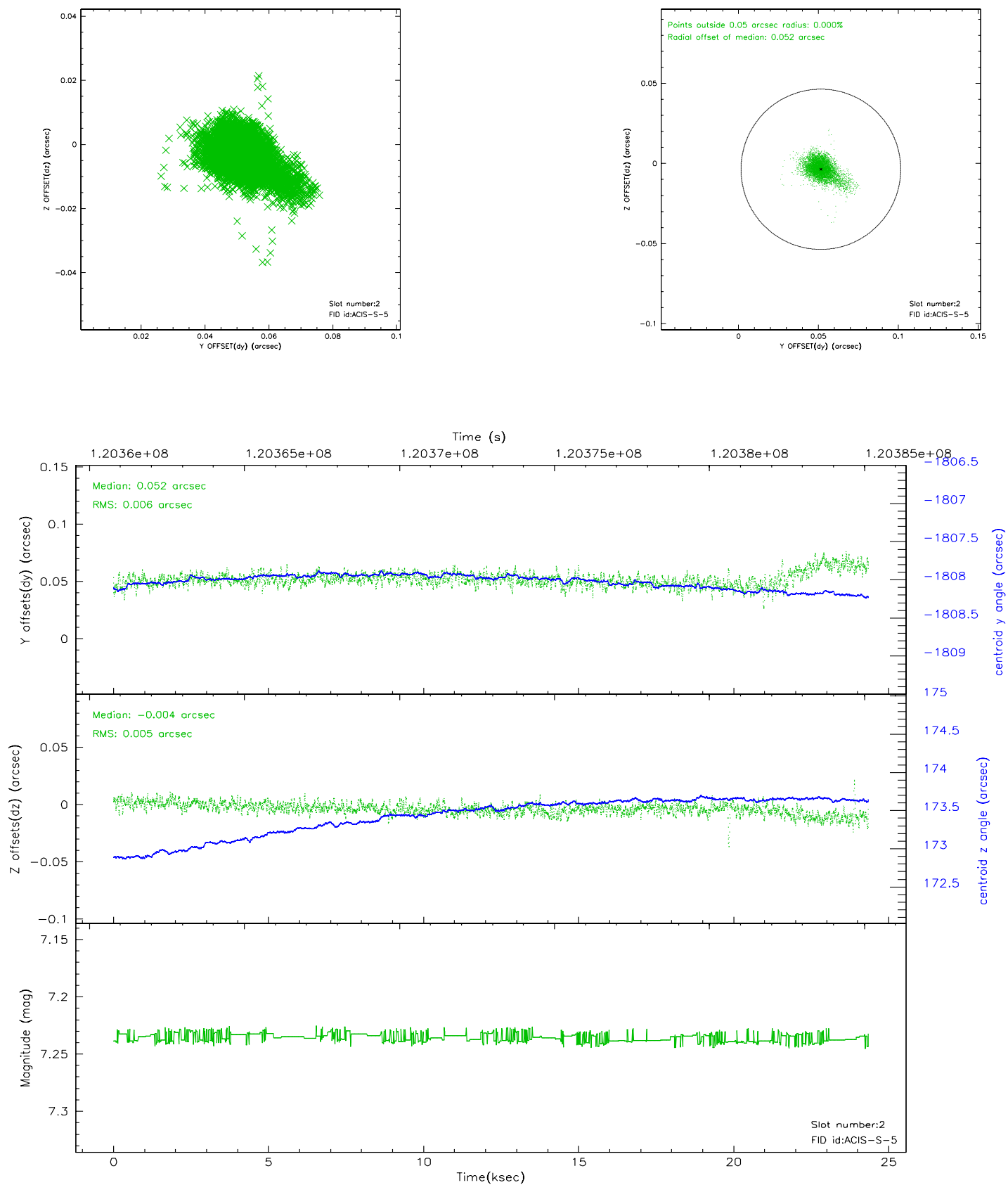
2.5.1 Slot 0



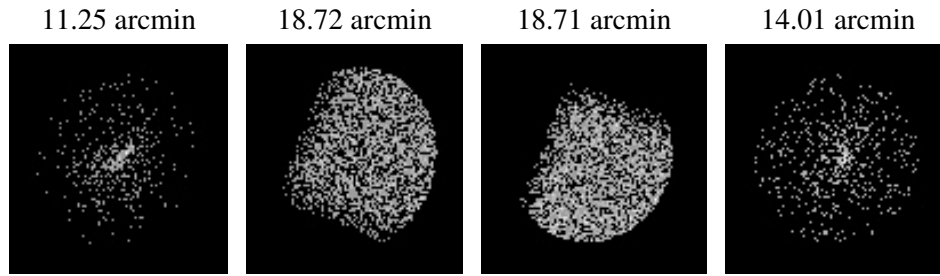
2.5.2 Slot 1



2.5.3 Slot 2



3 Point Sources



A Summary

A.1 Status

V&V Scientist	Jen Lauer
V&V Date (YYYY-MM-DD)	2007.01.11
V&V Edition	1
V&V Disposition and Status	OK
V&V Charge Time	24.342

A.2 Comments