

V&V Reference Report

L2 ASCDS Version : 7.6.10

Observation 2405 - L2 Version 001
Chandra X-Ray Center

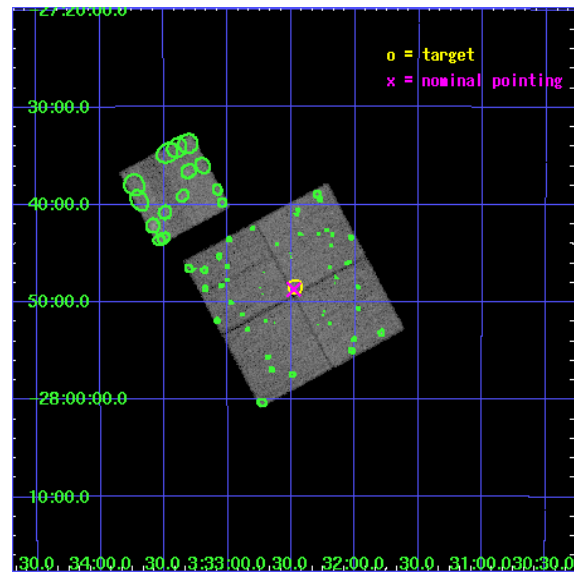
L2 Processing Date : Jun 20 2007

Contents

1	Front	2
2	OBI	3
2.1	OBI	3
2.1.1	Images	3
2.1.2	Bias	3
2.1.3	Parameters	4
2.1.4	Events	4
2.2	Compared Parameters	5
2.3	Aspect	6
2.4	Star Slots	9
2.4.1	Slot 3	9
2.4.2	Slot 4	10
2.4.3	Slot 5	11
2.4.4	Slot 6	12
2.4.5	Slot 7	13
2.5	FID Slots	14
2.5.1	Slot 0	14
2.5.2	Slot 1	15
2.5.3	Slot 2	16
3	Point Sources	17
A	Summary	18
A.1	Status	18
A.2	Comments	18

1 Front

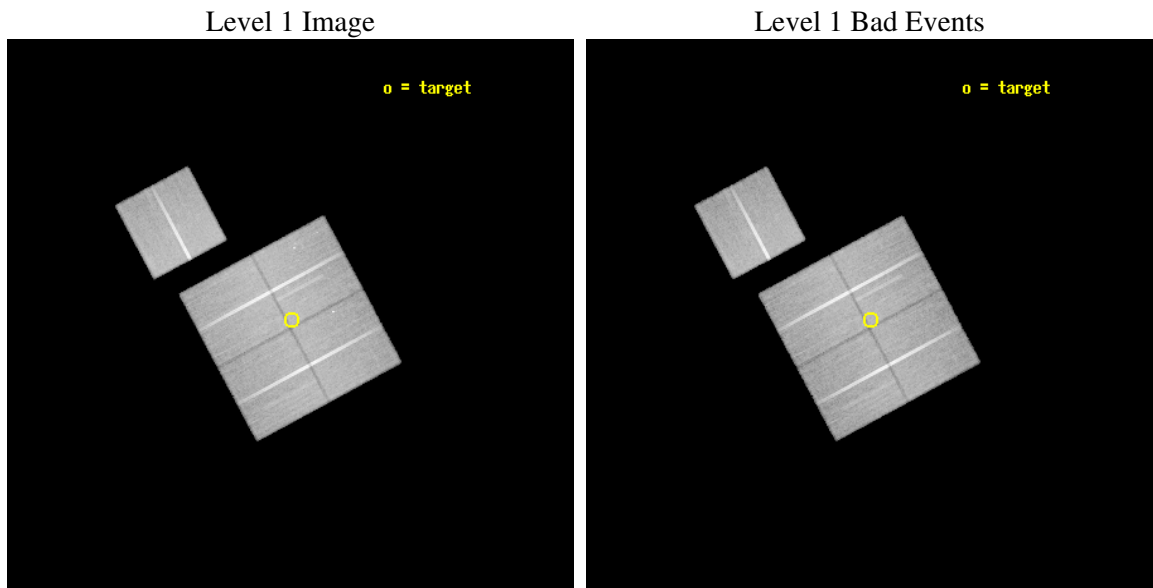
seq_num	900031
obs_id	2405
title	ULTRA DEEP AXAF OBSERVATION WITH ACIS
observer	PROF. RICCARDO GIACCONI
object	AXAF SOUTHERN DEEP F
dtcycle	0
cycle	P
ra_targ	53.116667
dec_targ	-27.808333
ra_nom	53.120086376296
dec_nom	-27.812095744677
roll_nom	331.80864720801
revision	2
ontime	60422.058913589
livetime	59632.60023181
ontime0	60425.199883819
ontime1	60422.058913589
ontime2	60418.917923421
ontime3	60422.058913589
ontime6	60422.058913589
l2events	180354



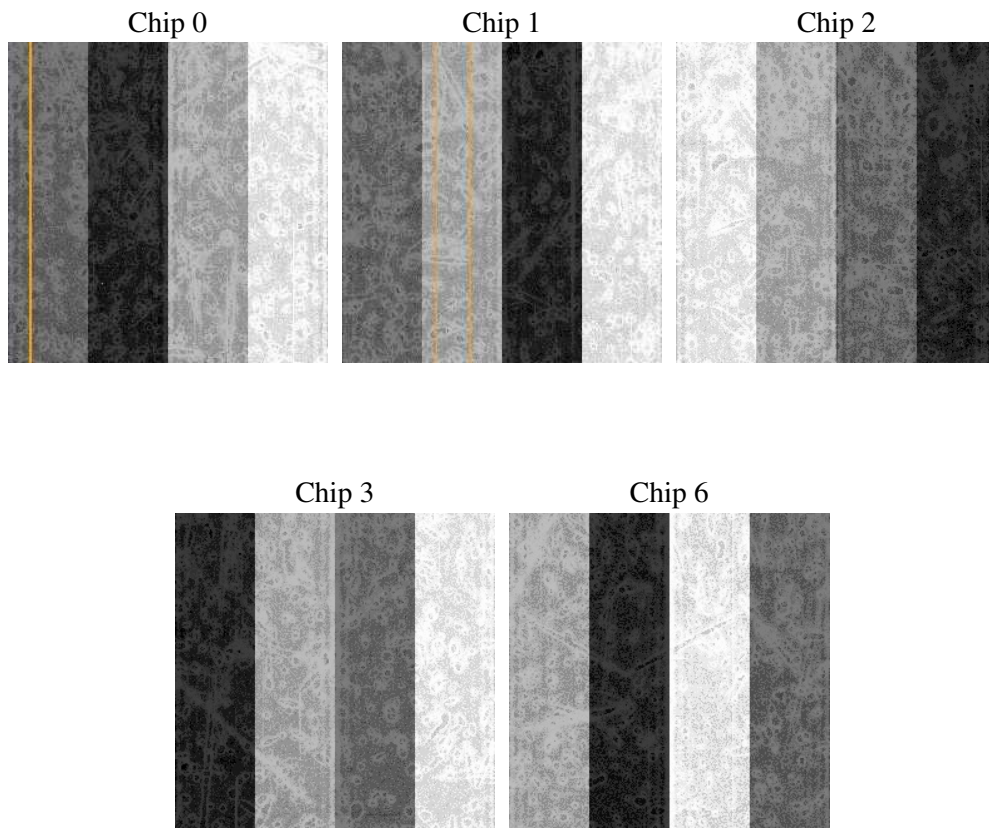
2 OBI

2.1 OBI

2.1.1 Images



2.1.2 Bias



2.1.3 Parameters

obi_num	0
ascdsver	7.6.10
caldsver	3.4.0
date	2007-06-20T05:56:33
revision	2

sched_exp_time	60654.090000
ontime	60422.058913589
ontime0	60425.199883819
ontime1	60422.058913589
ontime2	60418.917923421
ontime3	60422.058913589
ontime6	60422.058913589
l1events	1755981

2.1.4 Events

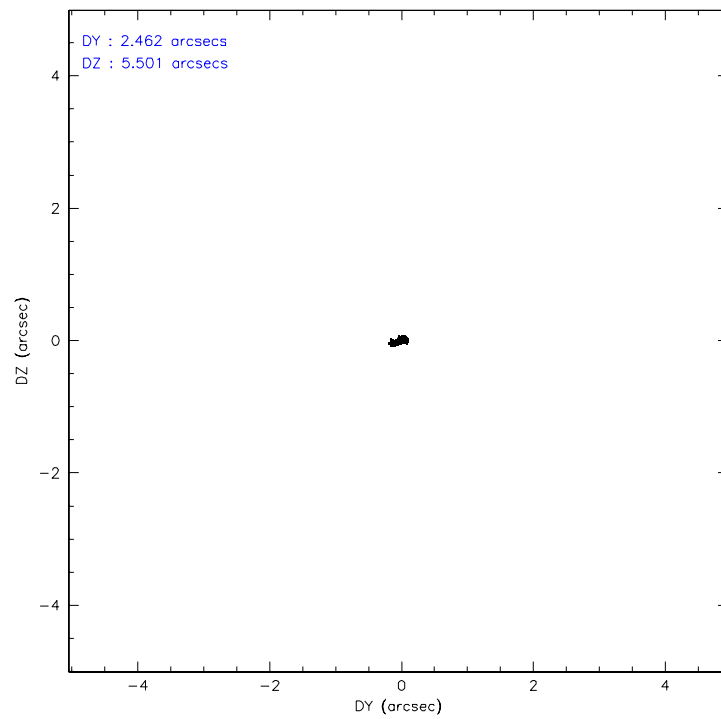
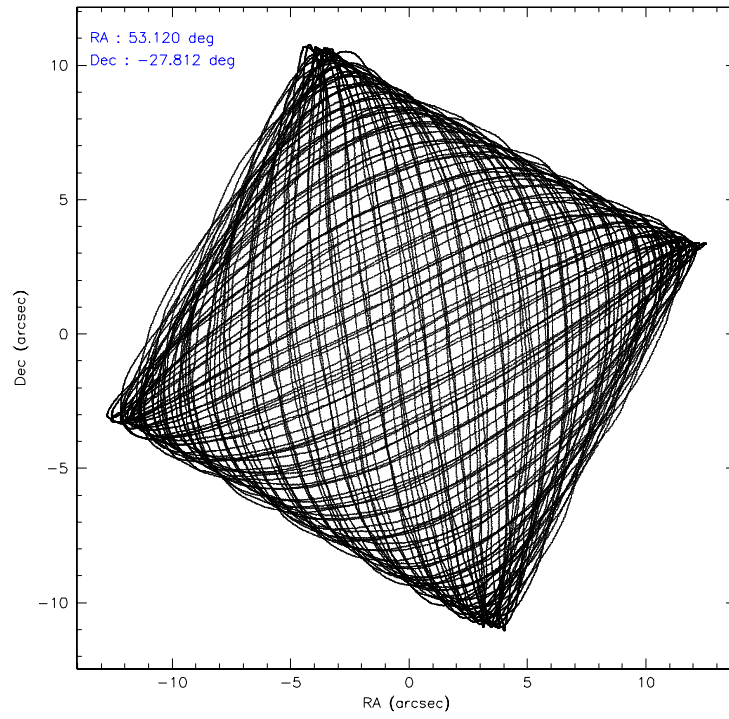
	ccd 0	ccd 1	ccd 2	ccd 3	ccd 6
level 1 events	332780	332495	363667	363176	363863
rejected events	291227	288452	323069	321320	321506
rejected %	87%	86%	88%	88%	88%

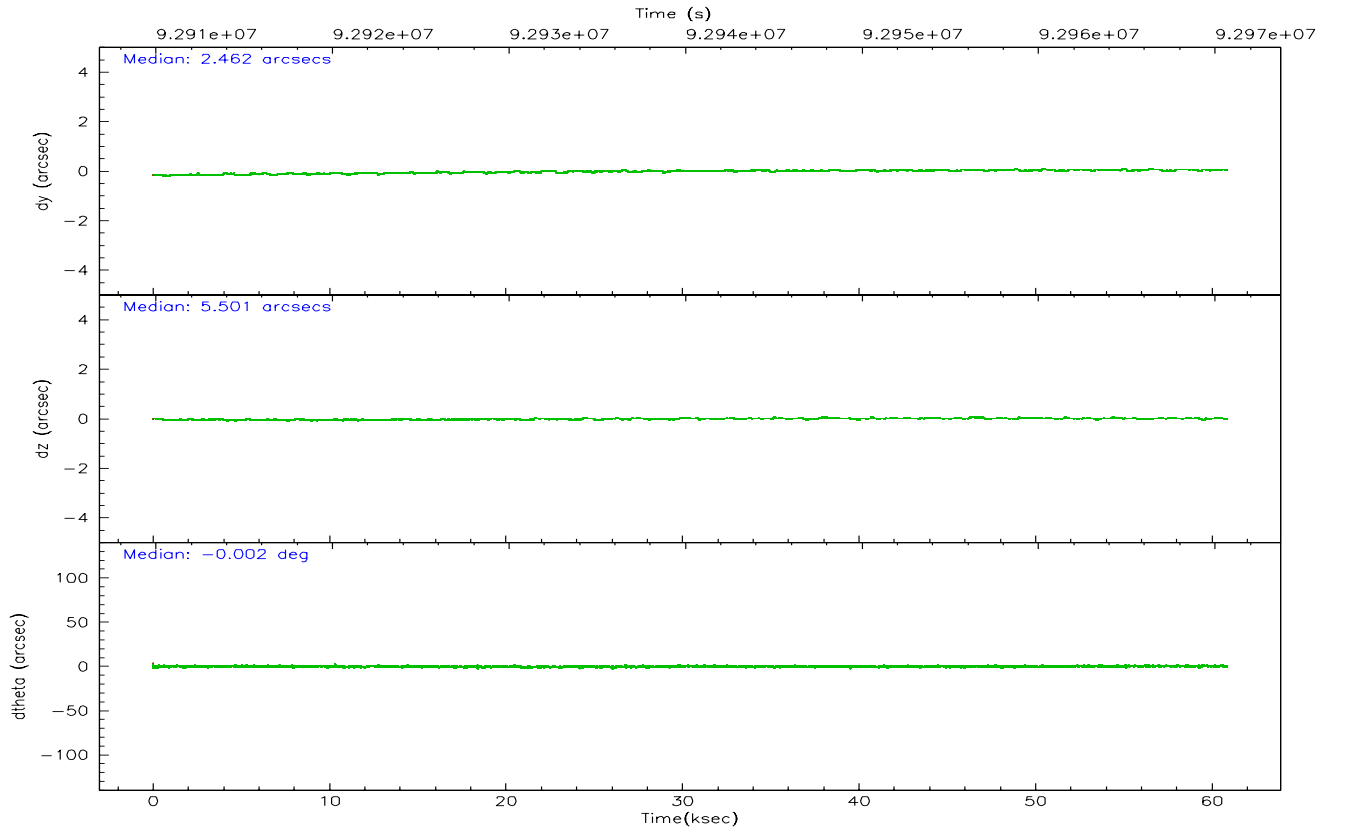
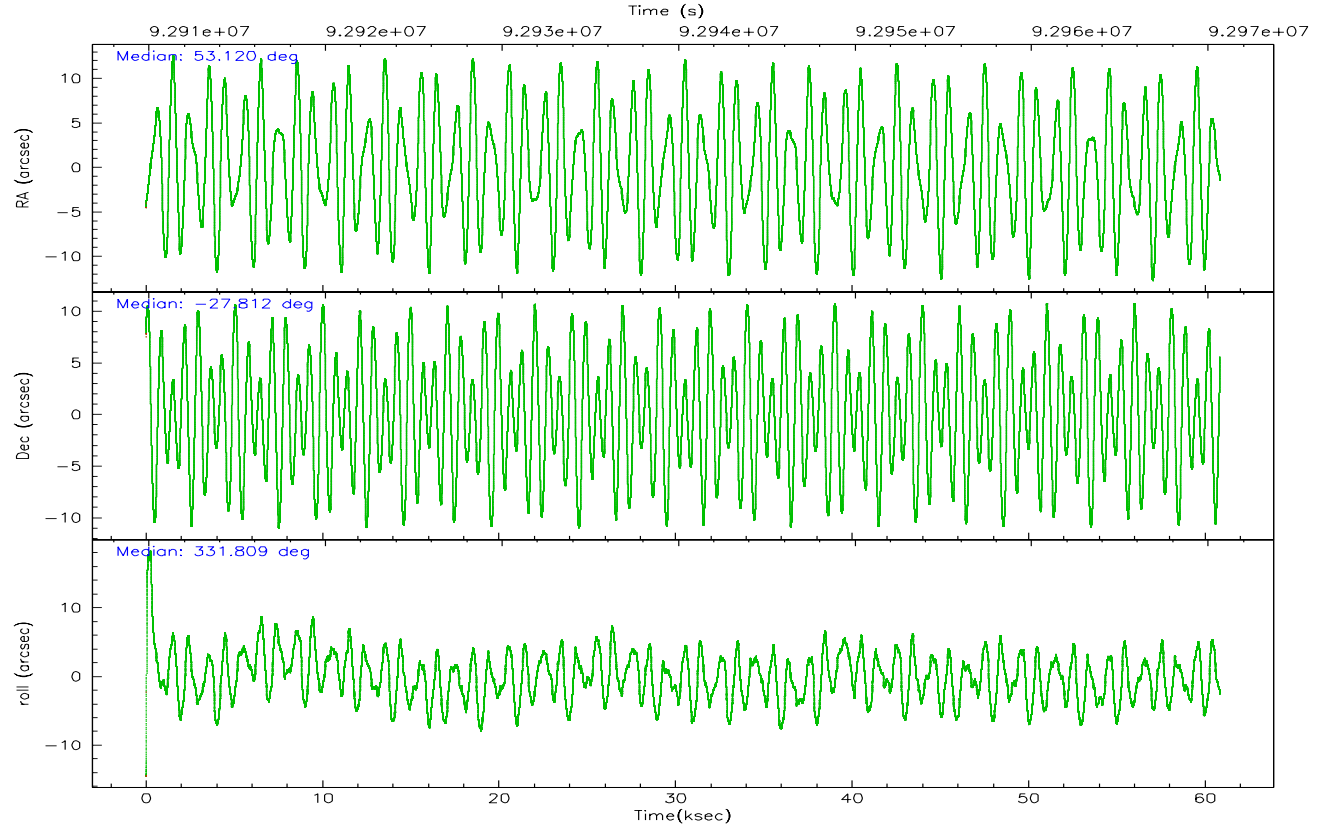
	ccd 0	ccd 1	ccd 2	ccd 3	ccd 6
grade 0 events	17435	18221	17564	18448	17786
	5%	5%	4%	5%	4%
grade 1 events	169	184	140	177	161
	0%	0%	0%	0%	0%
grade 2 events	8817	8686	8420	8080	8171
	2%	2%	2%	2%	2%
grade 3 events	4262	4534	3841	4010	4299
	1%	1%	1%	1%	1%
grade 4 events	3844	4499	3754	4058	4077
	1%	1%	1%	1%	1%
grade 5 events	12727	13592	12235	13608	14919
	3%	4%	3%	3%	4%
grade 6 events	7202	8107	7020	7270	8036
	2%	2%	1%	2%	2%
grade 7 events	278324	274672	310693	307525	306414
	83%	82%	85%	84%	84%

2.2 Compared Parameters

Parameter	Planned	Actual	Parameter	Planned	Actual
Instrument	ACIS	ACIS	Obspar format version number	6	6
Detector	ACIS-01236	ACIS-01236	Obspar file type	PREDICTED	ACTUAL
Grating	NONE	NONE	Obspar update status	NONE	UPDATED
Data mode	FAINT	FAINT	Number of optional ACIS chips dropped	0	0
Observation mode	POINTING	POINTING	On-chip summing requested	N	N
Pointing RA	53.089018	53.12008637629621	Subarray requested	NONE	NONE
Pointing Dec	-27.812916	-27.81209574467668	Alternating exposures requested	N	N
Pointing Roll	331.585472	331.8086472080108	Primary exposure time	0.000000	3.1
SIM focus pos (mm)	-0.782348	-0.7809083437167272			
SIM defocus (mm)	0	0.001439871863259334			
SIM translation stage pos (mm)	-233.592463	-233.5874344608287			
SIM translation stage offset (mm)	0	-0.005018542100998502			
Observation start time	92910034.184000	92909657.332985			
Observation start date	2000-12-11T08:19:30	2000-12-11T08:14:17			
Observation end time	92970688.184000	92971002.56032901			
Observation end date	2000-12-12T01:10:24	2000-12-12T01:16:42			
Read mode	TIMED	TIMED			

2.3 Aspect



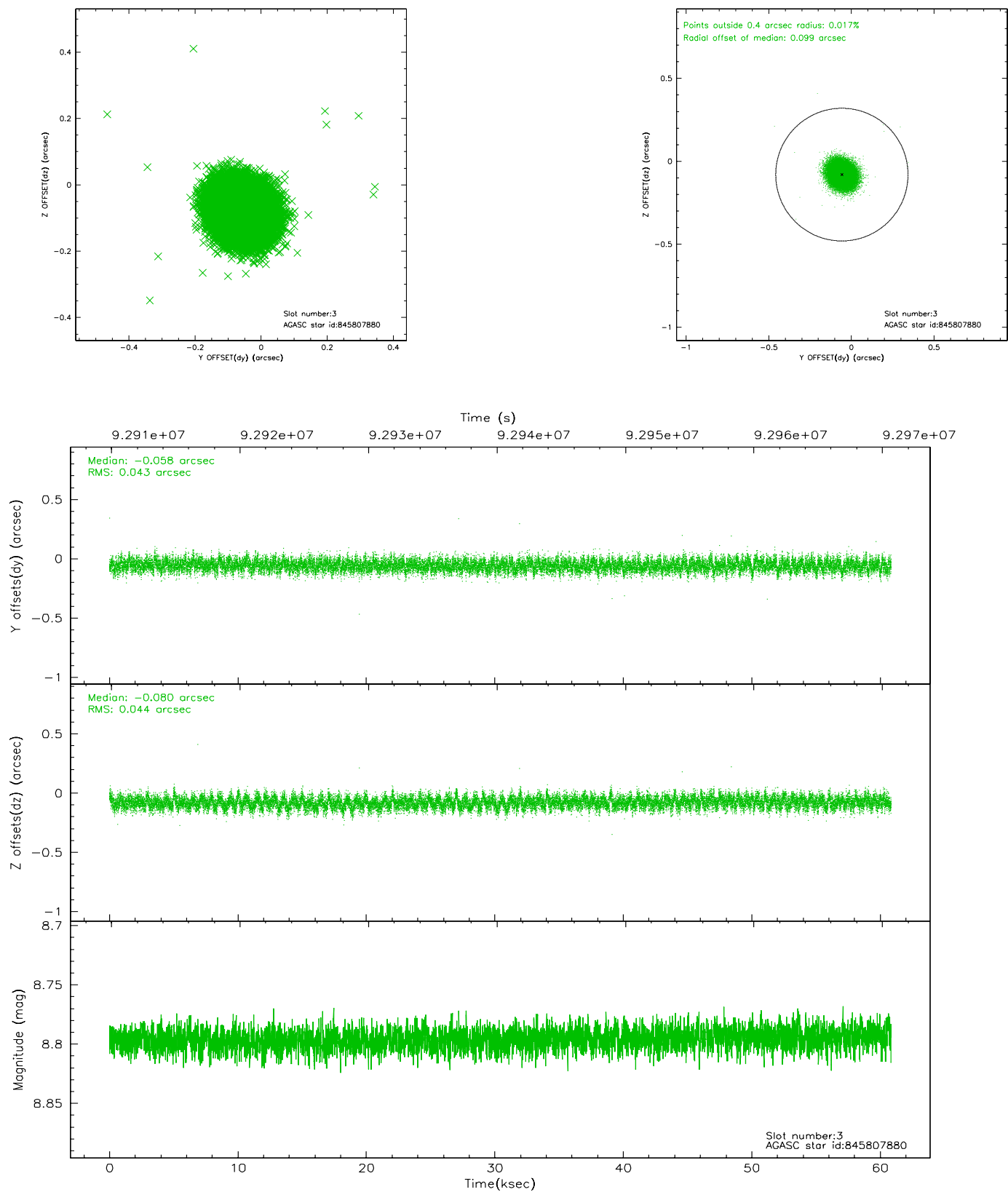


Slot Statistics

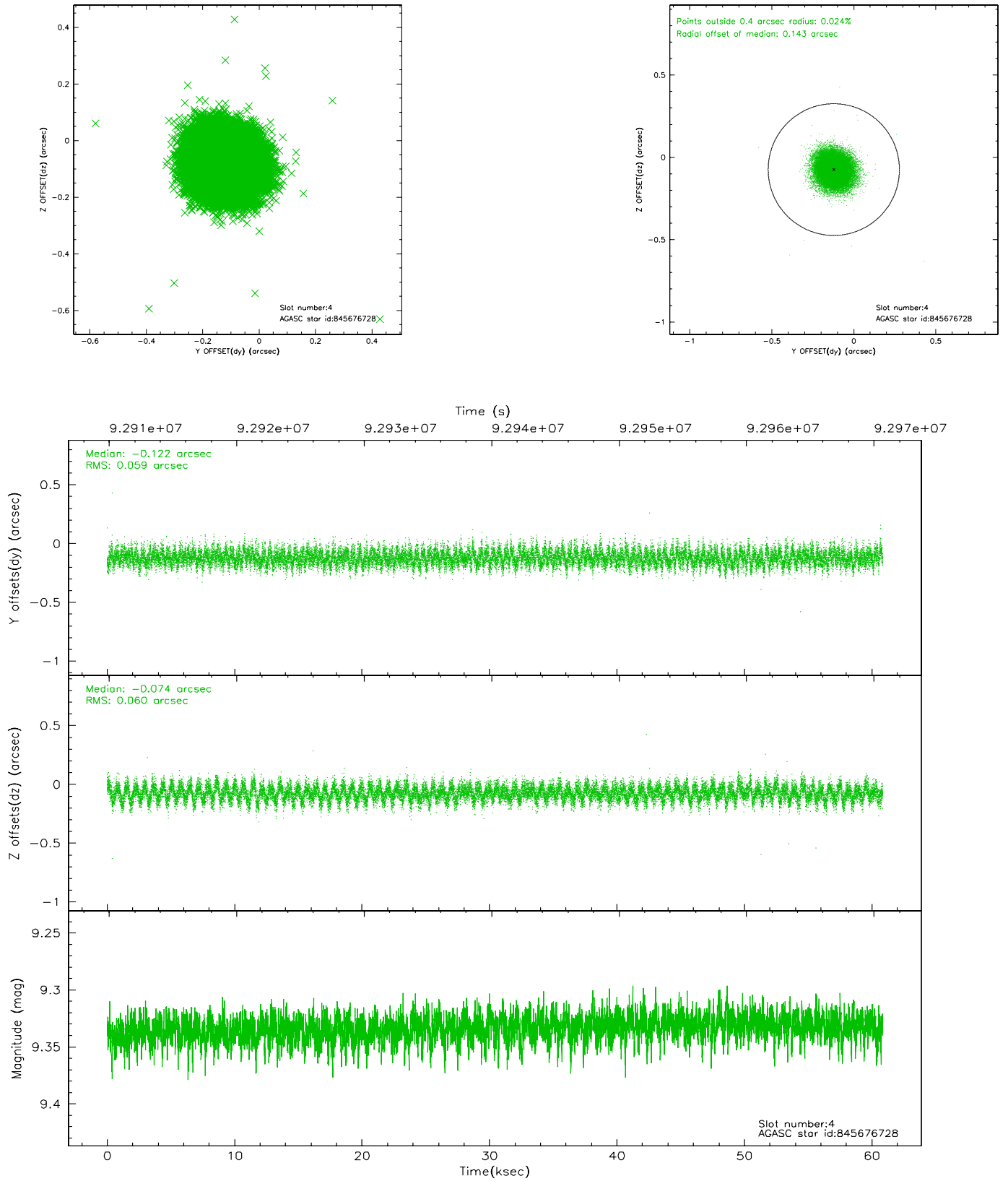
slot	status	id	mag	n_pts	med_dy	med_dz	dr1	dr2	ra	dec	mean_y	mean_z
0	FID	ACIS-I-2	7.15	14841	-0.013	-0.015	0.010	0.017	0.000000	0.000000	-756.82	-835.23
1	FID	ACIS-I-4	7.19	14837	-0.067	0.022	0.007	0.013	0.000000	0.000000	2157.20	1071.00
2	FID	ACIS-I-5	7.23	14840	-0.021	0.062	0.010	0.017	0.000000	0.000000	-1810.71	1068.84
3	GUIDE	845807880	8.80	29673	-0.058	-0.080	0.065	0.104	53.382027	-27.886093	946.36	211.01
4	GUIDE	845676728	9.33	29671	-0.122	-0.074	0.089	0.143	52.877179	-27.664318	-847.93	148.64
5	GUIDE	845676936	9.51	29671	-0.052	-0.045	0.081	0.134	52.843773	-27.880153	-570.38	-584.83
6	GUIDE	845808520	10.19	29344	0.076	0.060	0.141	0.233	53.575292	-27.720766	1207.26	1026.58
7	GUIDE	845808968	9.97	29669	0.156	0.139	0.121	0.196	54.016598	-27.589085	2225.67	2107.58

2.4 Star Slots

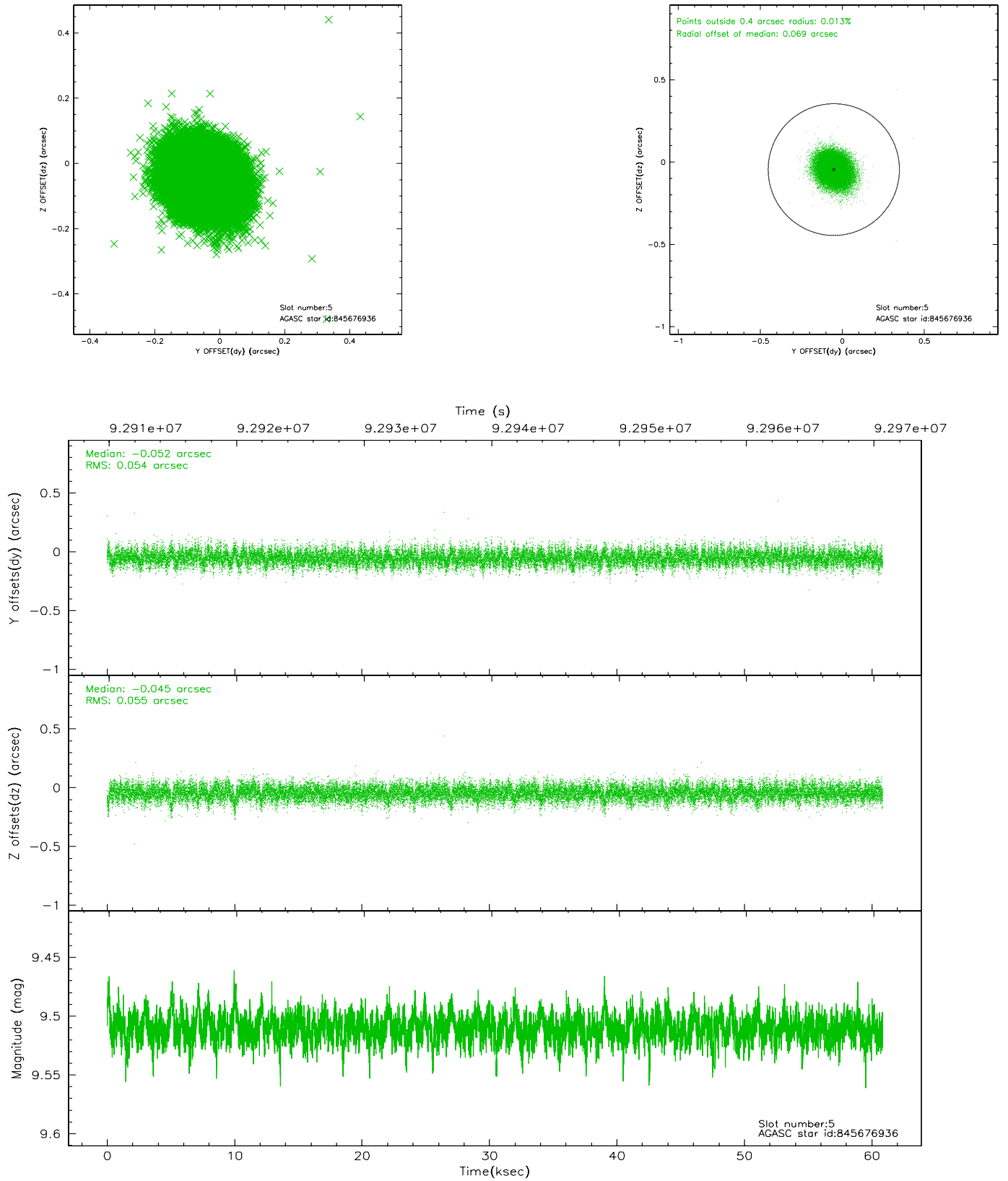
2.4.1 Slot 3



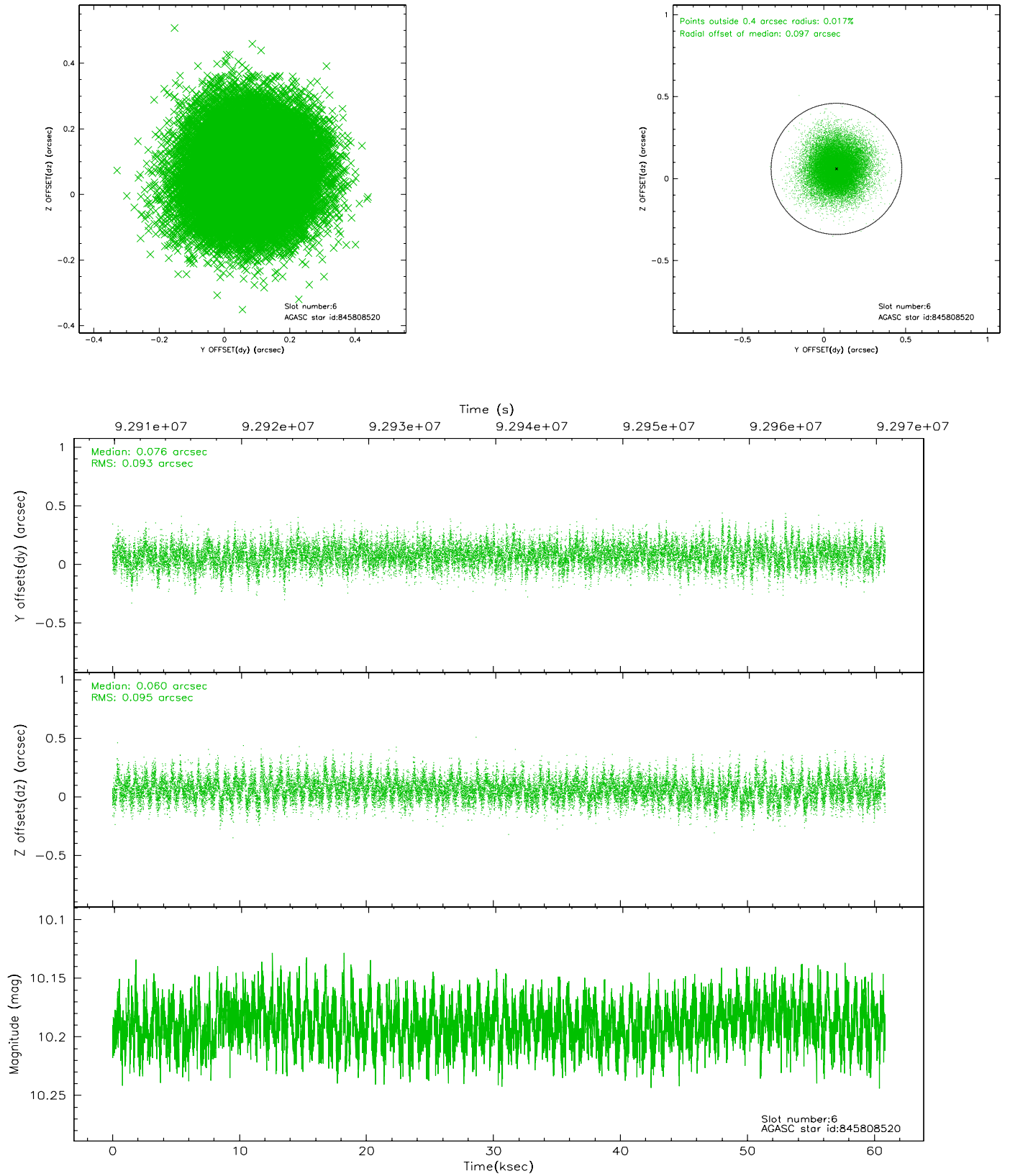
2.4.2 Slot 4



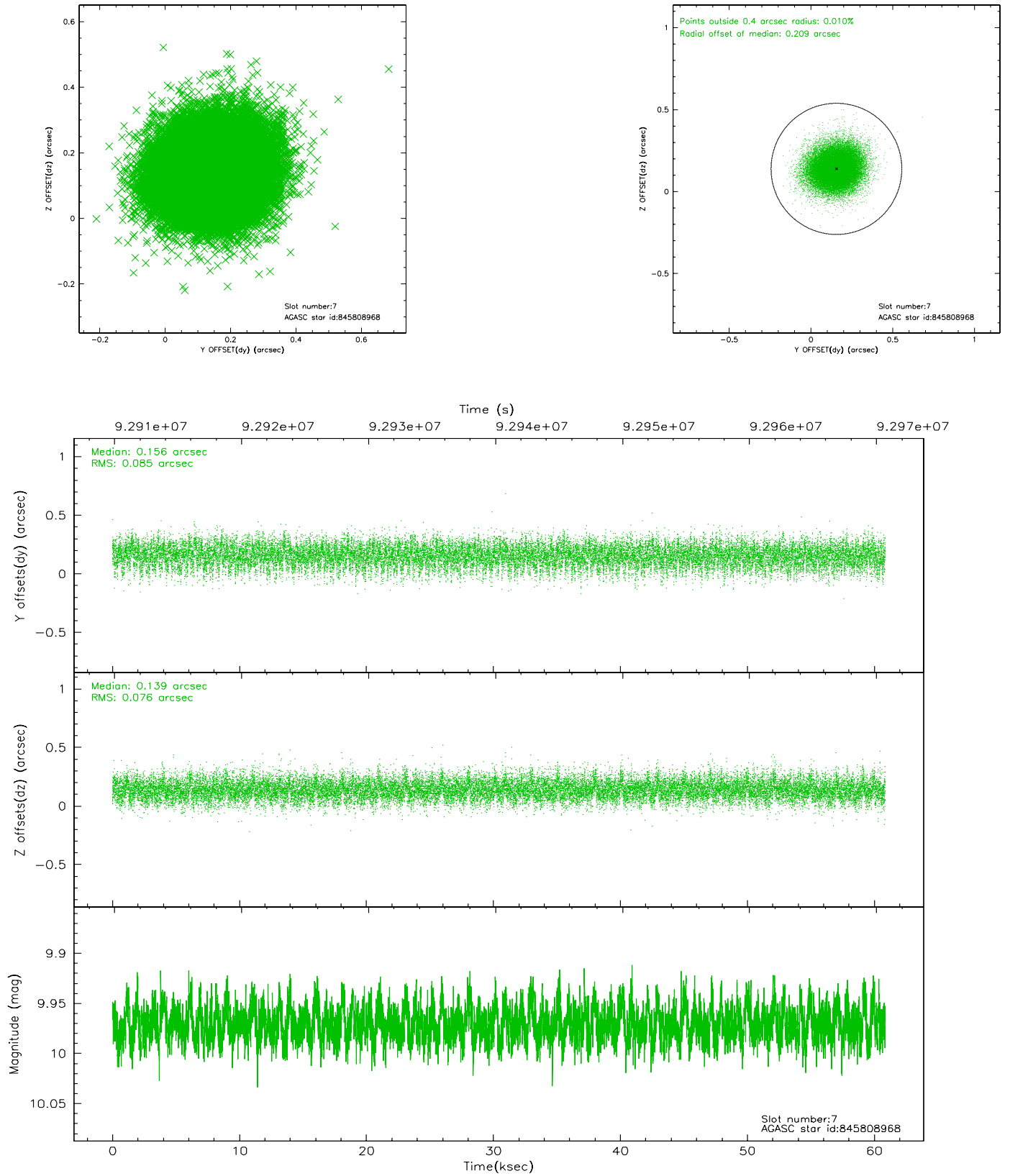
2.4.3 Slot 5



2.4.4 Slot 6

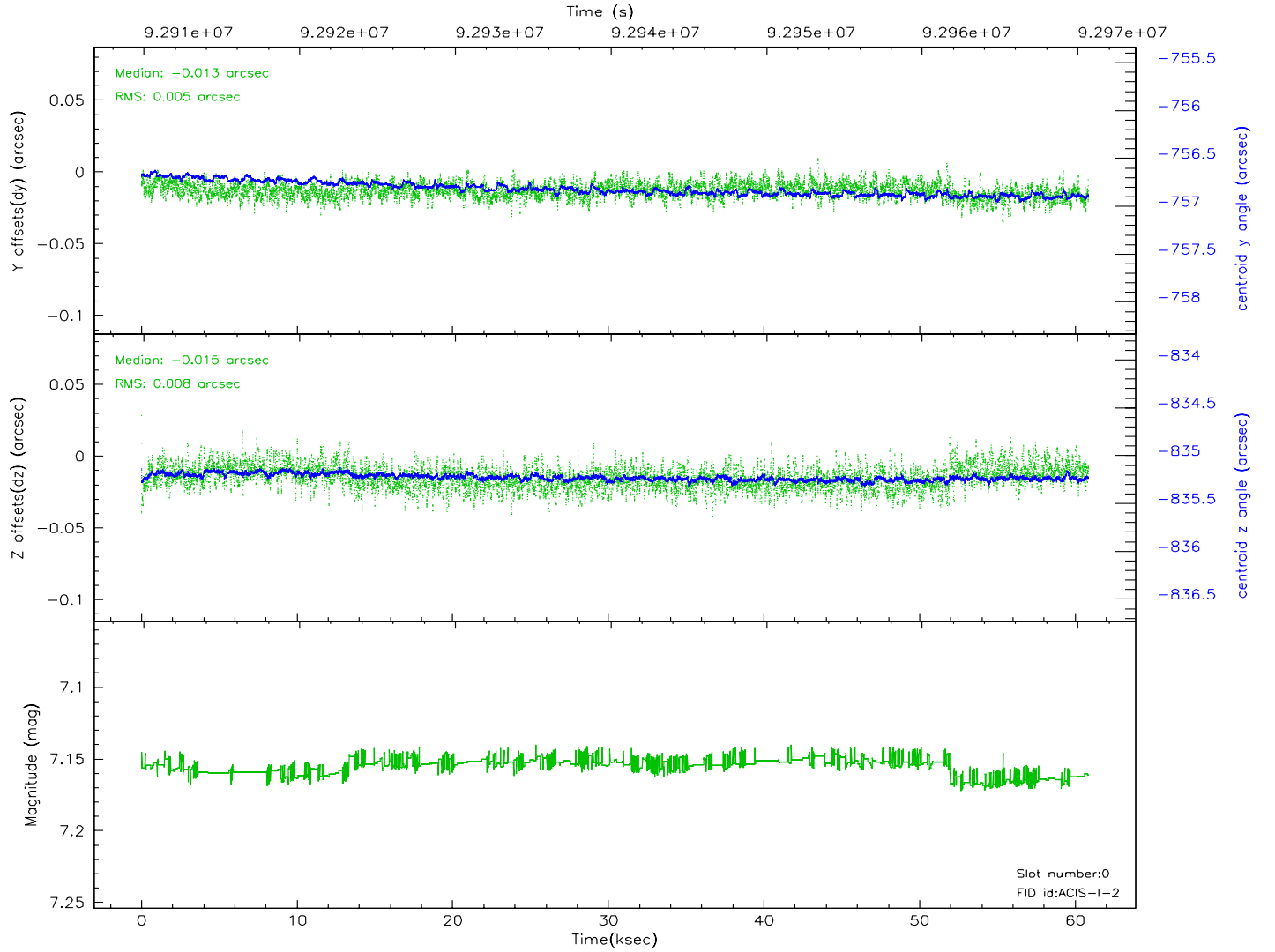
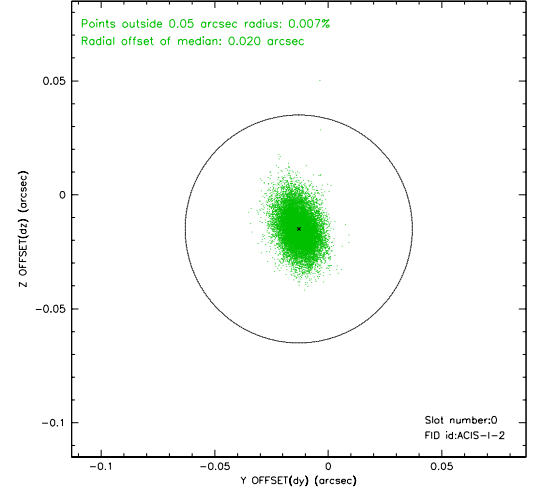
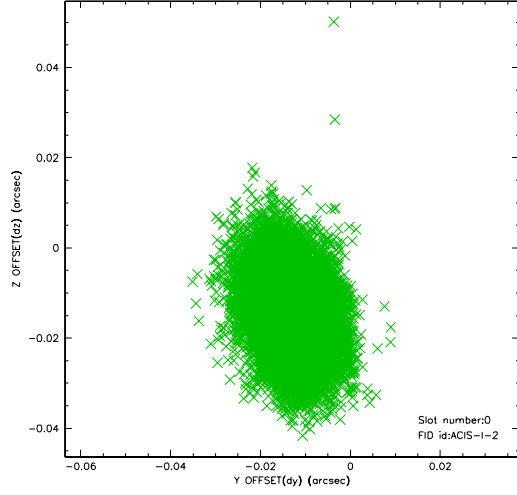


2.4.5 Slot 7

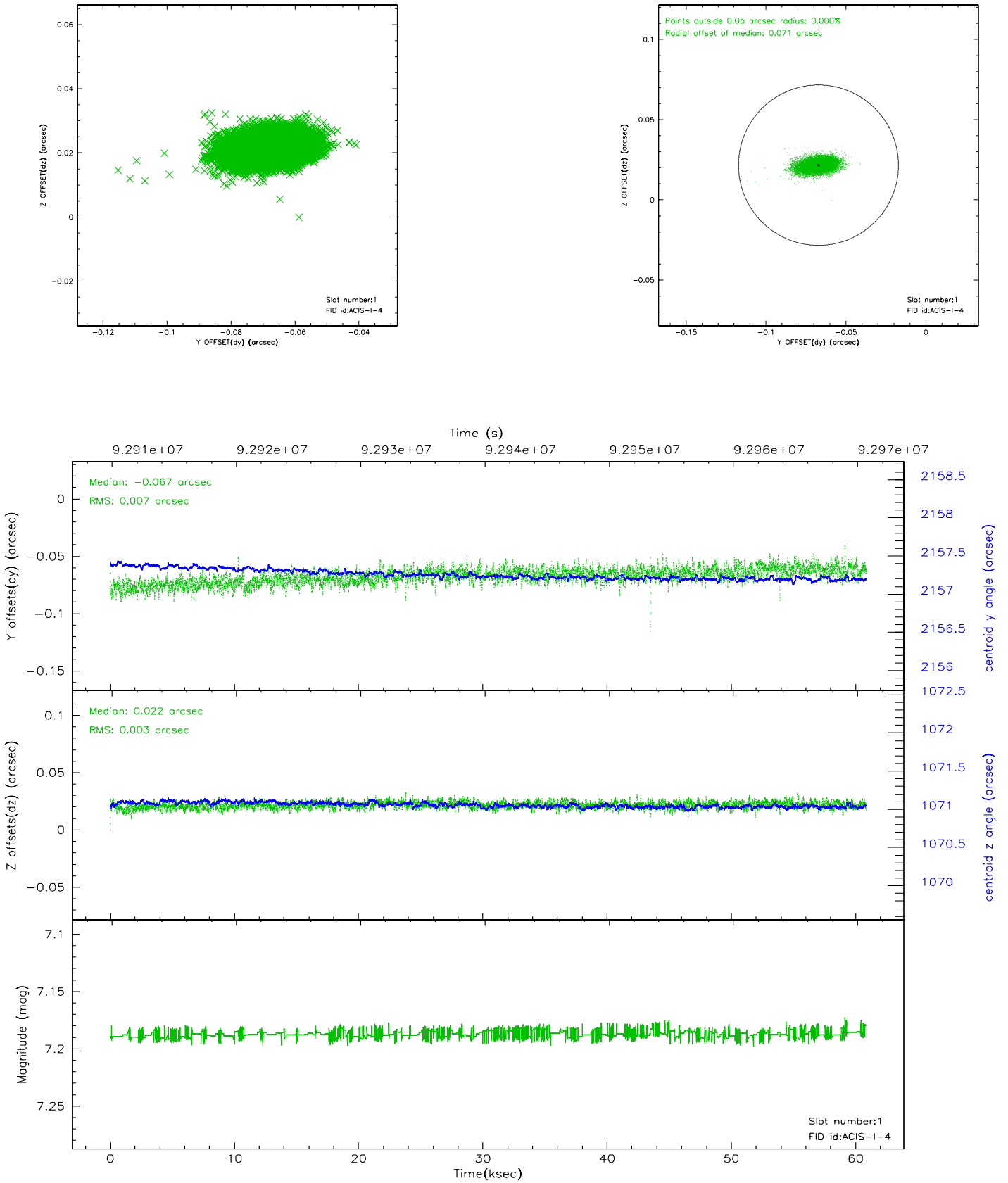


2.5 FID Slots

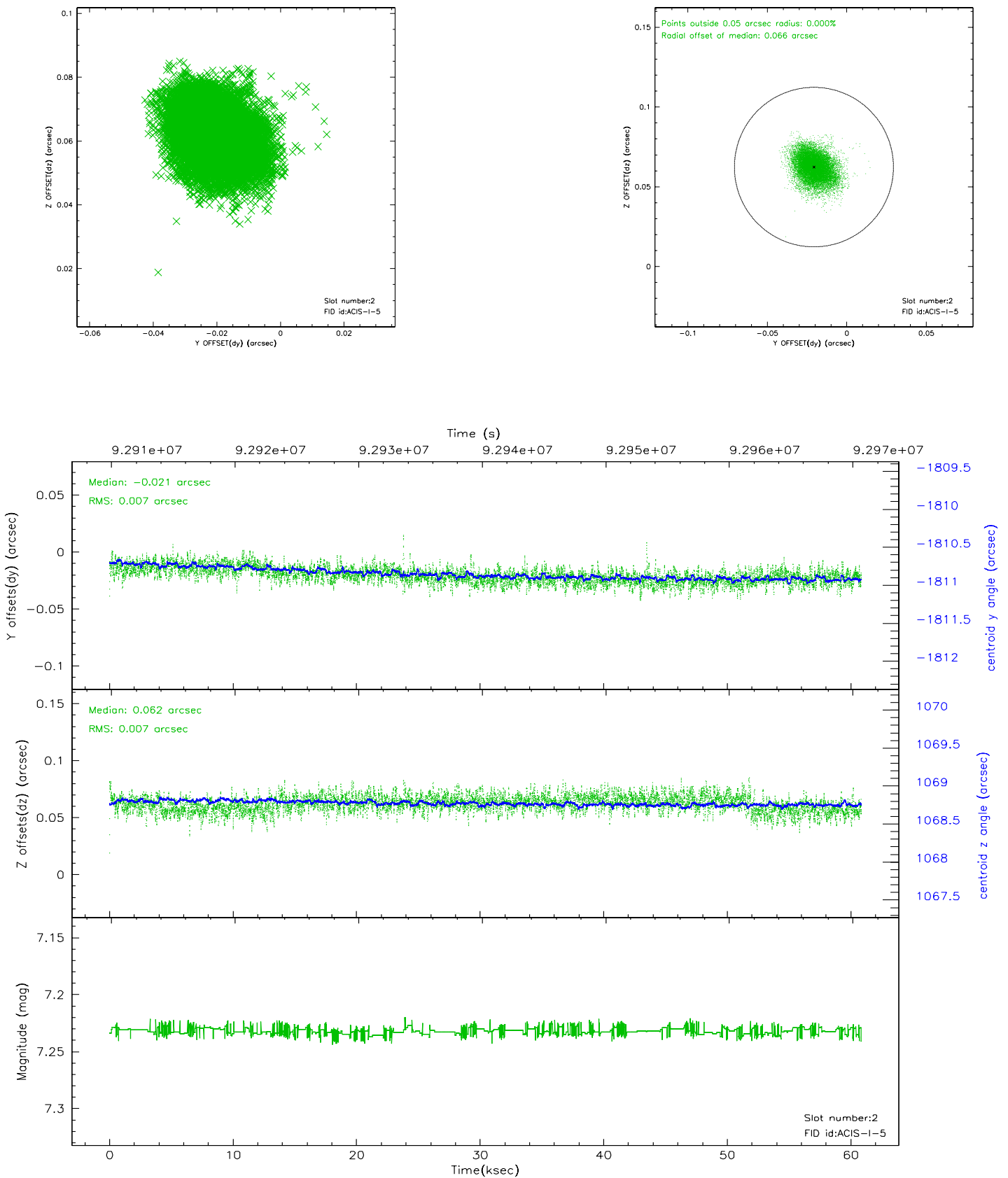
2.5.1 Slot 0



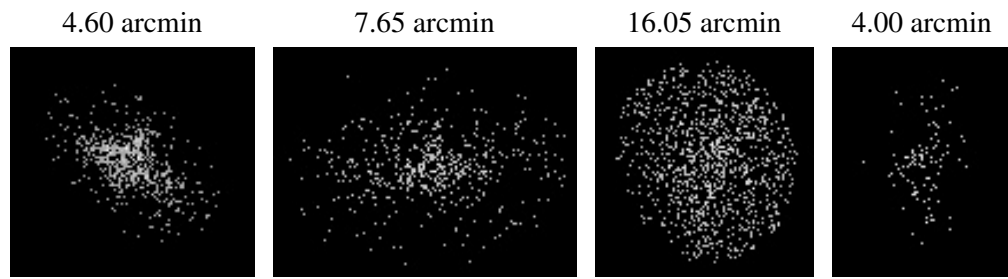
2.5.2 Slot 1



2.5.3 Slot 2



3 Point Sources



A Summary

A.1 Status

V&V Scientist	Beth Sundheim
V&V Date (YYYY-MM-DD)	2007.06.20
V&V Edition	1
V&V Disposition and Status	OK
V&V Charge Time	60.425

A.2 Comments