

# V&V Reference Report

## L2 ASCDS Version : 7.6.10

Observation 2386 - L2 Version 001  
Chandra X-Ray Center

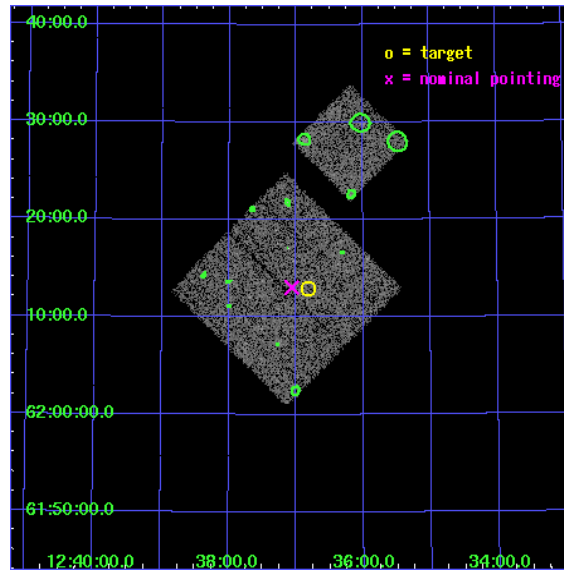
L2 Processing Date : Jun 16 2007

## Contents

<b>1</b>	<b>Front</b>	<b>2</b>
<b>2</b>	<b>OBI</b>	<b>3</b>
2.1	OBI . . . . .	3
2.1.1	Images . . . . .	3
2.1.2	Bias . . . . .	3
2.1.3	Parameters . . . . .	4
2.1.4	Events . . . . .	4
2.2	Compared Parameters . . . . .	5
2.3	Aspect . . . . .	6
2.4	Star Slots . . . . .	9
2.4.1	Slot 3 . . . . .	9
2.4.2	Slot 4 . . . . .	10
2.4.3	Slot 5 . . . . .	11
2.4.4	Slot 6 . . . . .	12
2.4.5	Slot 7 . . . . .	13
2.5	FID Slots . . . . .	14
2.5.1	Slot 0 . . . . .	14
2.5.2	Slot 1 . . . . .	15
2.5.3	Slot 2 . . . . .	16
<b>3</b>	<b>Point Sources</b>	<b>17</b>
<b>A</b>	<b>Summary</b>	<b>18</b>
A.1	Status . . . . .	18
A.2	Comments . . . . .	18

# 1 Front

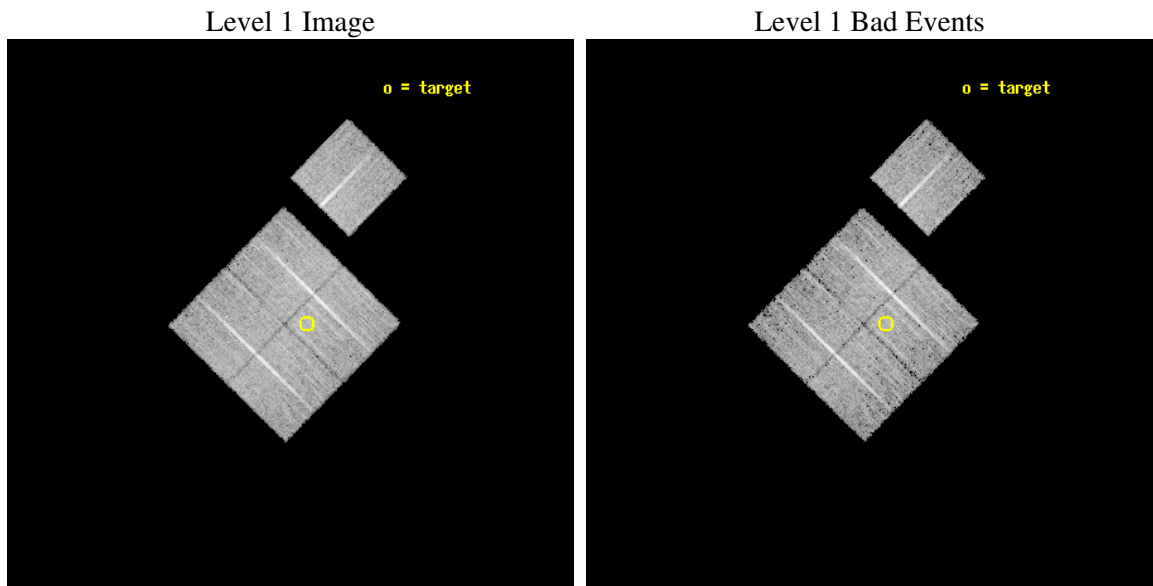
seq_num	900030
obs_id	2386
title	HDF NORTH SURVEY
observer	Prof. Gordon Garmire
object	HDF NORTH
dtcycle	0
cycle	P
ra_targ	189.205833
dec_targ	62.21611
ra_nom	189.26611712238
dec_nom	62.217594173814
roll_nom	44.499051688451
revision	4
ontime	9969.5999808311
livetime	9839.3398175689
ontime0	9969.5999808311
ontime1	9969.5999808311
ontime2	9969.5999808311
ontime3	9969.5999808311
ontime6	9969.5999808311
l2events	31092



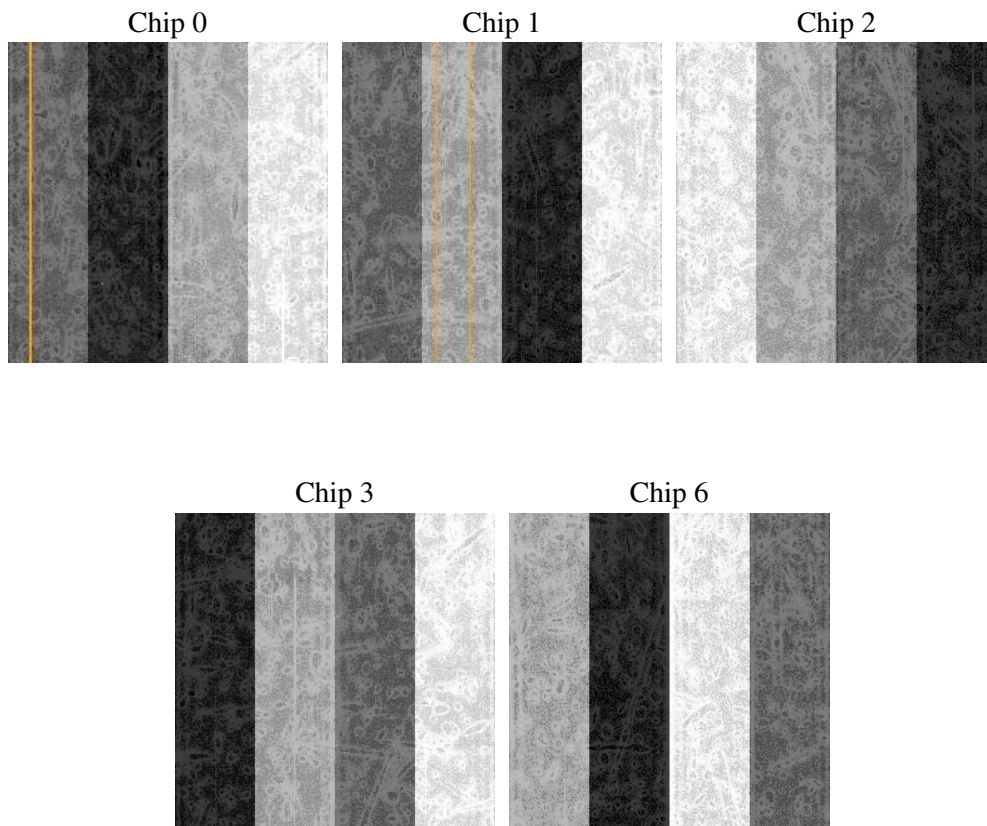
## 2 OBI

### 2.1 OBI

#### 2.1.1 Images



#### 2.1.2 Bias



### 2.1.3 Parameters

obi_num	0
ascdsver	7.6.10
caldsver	3.4.0
date	2007-06-16T20:35:26
revision	4

sched_exp_time	9859.805000
ontime	9969.5999808311
ontime0	9969.5999808311
ontime1	9969.5999808311
ontime2	9969.5999808311
ontime3	9969.5999808311
ontime6	9969.5999808311
l1events	304578

### 2.1.4 Events

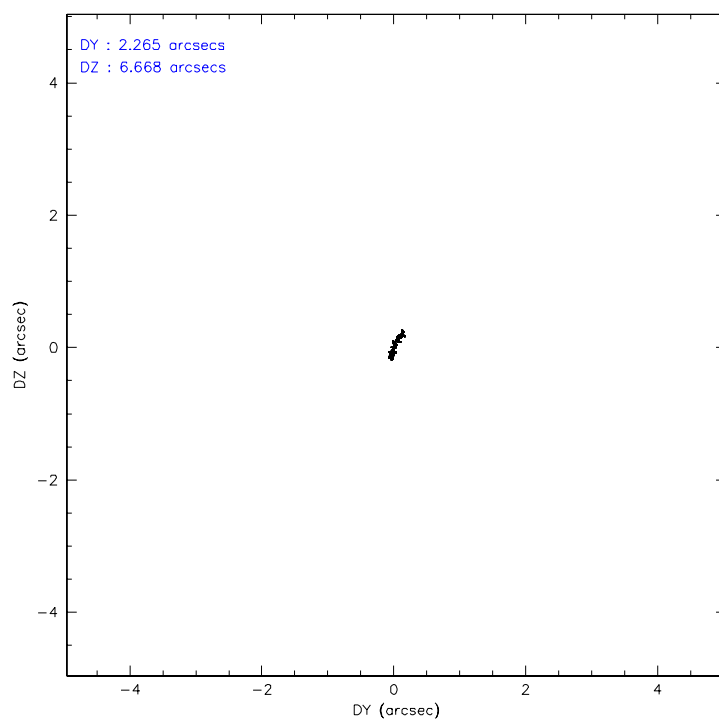
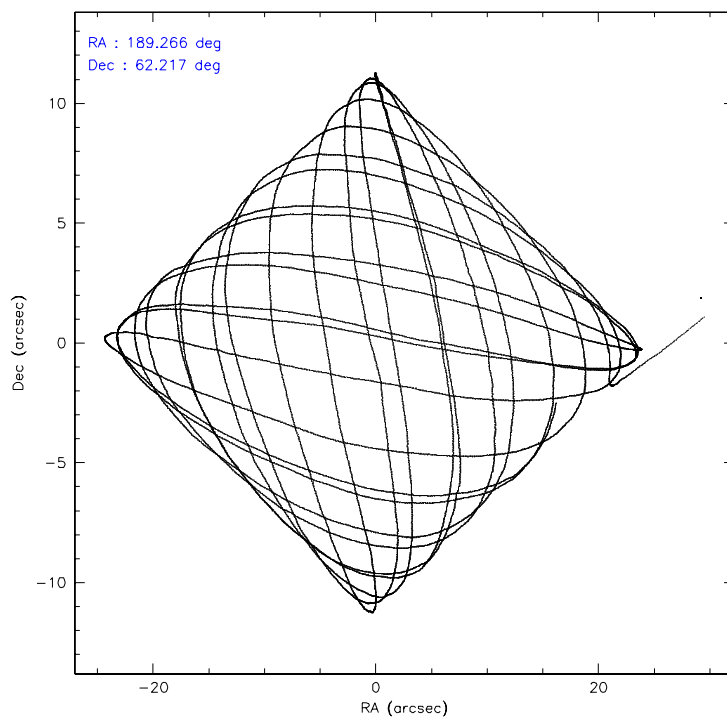
	<b>ccd 0</b>	<b>ccd 1</b>	<b>ccd 2</b>	<b>ccd 3</b>	<b>ccd 6</b>
level 1 events	57501	59026	63473	62810	61768
rejected events	50064	51451	56456	55737	54701
rejected %	87%	87%	88%	88%	88%

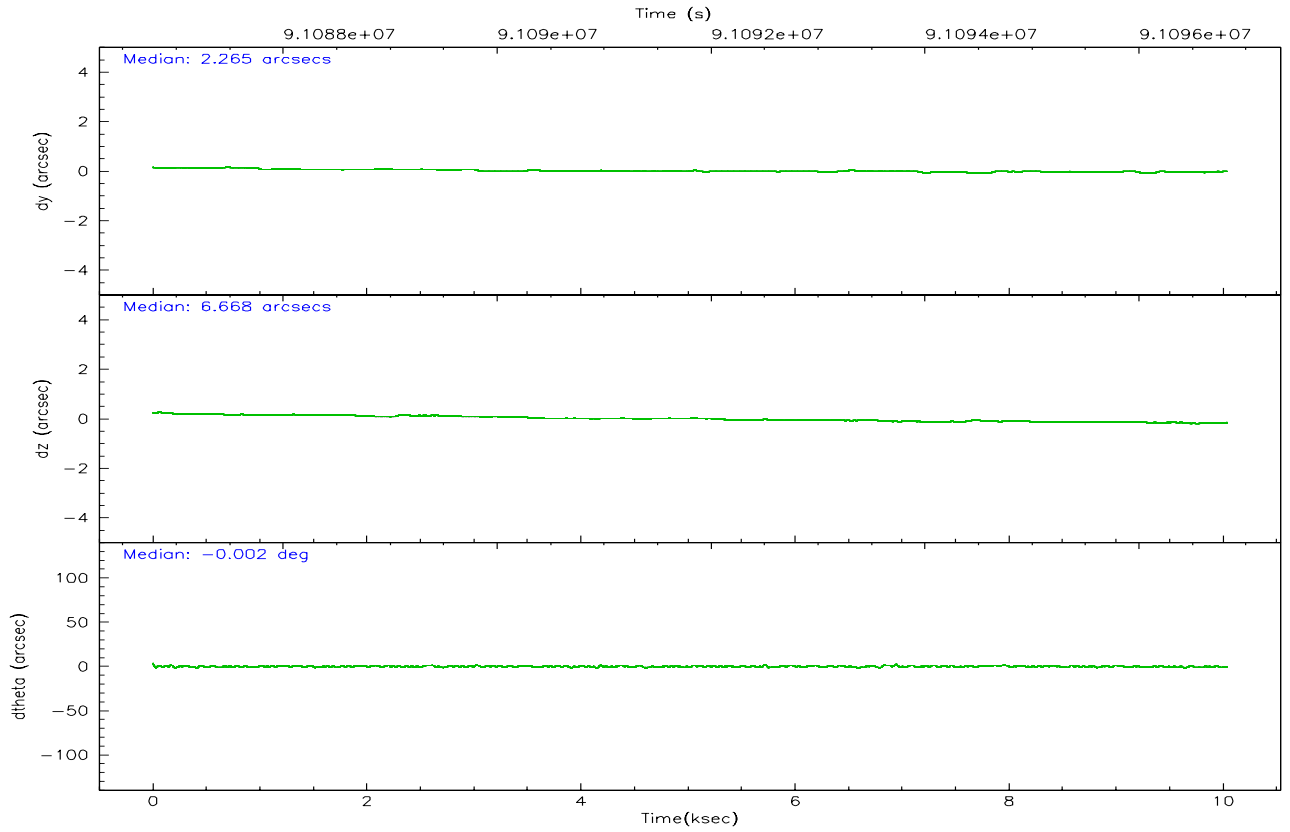
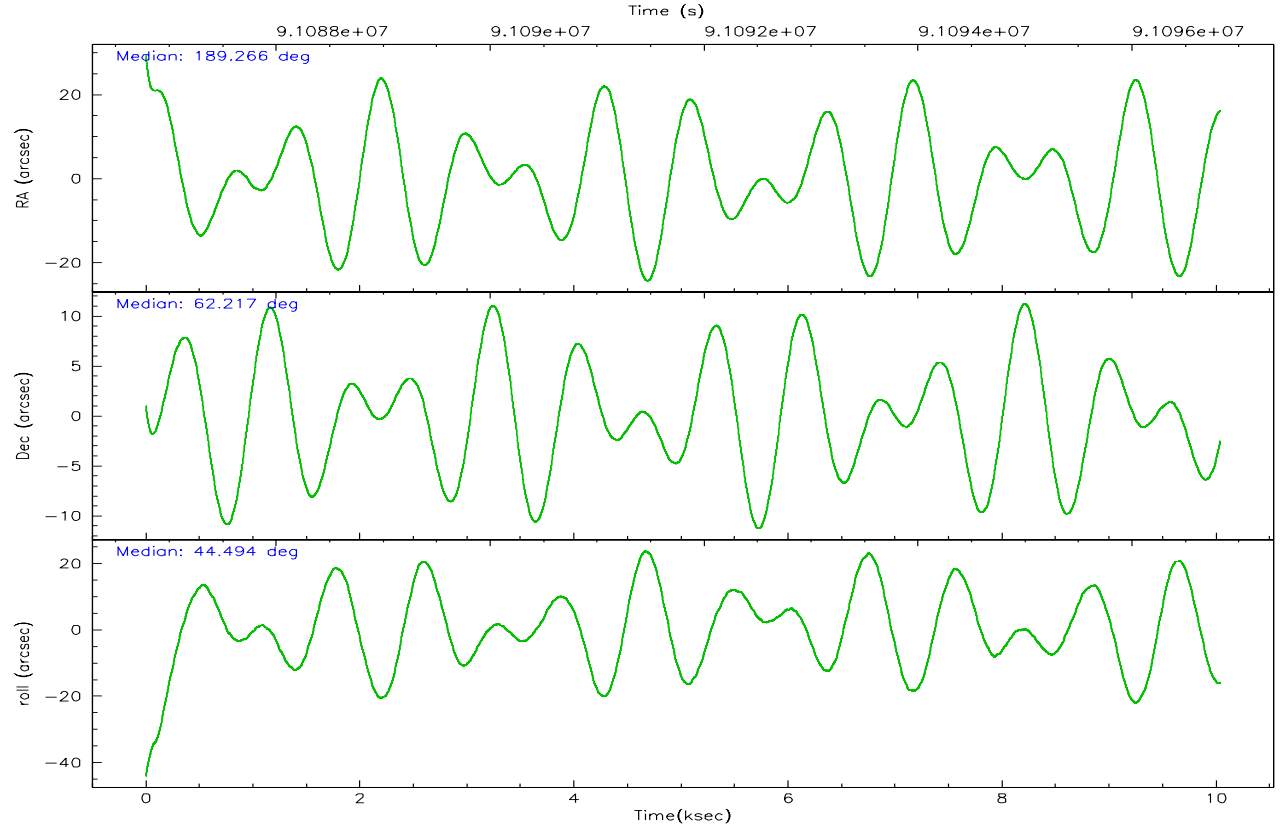
	<b>ccd 0</b>	<b>ccd 1</b>	<b>ccd 2</b>	<b>ccd 3</b>	<b>ccd 6</b>
grade 0 events	3310	3080	3167	2996	2849
	5%	5%	4%	4%	4%
grade 1 events	27	23	34	24	32
	0%	0%	0%	0%	0%
grade 2 events	1534	1571	1413	1382	1372
	2%	2%	2%	2%	2%
grade 3 events	669	772	616	700	700
	1%	1%	0%	1%	1%
grade 4 events	674	772	645	688	719
	1%	1%	1%	1%	1%
grade 5 events	2136	2344	2078	2353	2543
	3%	3%	3%	3%	4%
grade 6 events	1254	1385	1181	1314	1430
	2%	2%	1%	2%	2%
grade 7 events	47897	49079	54339	53353	52123
	83%	83%	85%	84%	84%

## 2.2 Compared Parameters

Parameter	Planned	Actual	Parameter	Planned	Actual
Instrument	ACIS	ACIS	Obspar format version number	6	6
Detector	ACIS-01236	ACIS-01236	Obspar file type	PREDICTED	ACTUAL
Grating	NONE	NONE	Obspar update status	NONE	UPDATED
Data mode	FAINT	FAINT	Number of optional ACIS chips dropped	0	0
Observation mode	POINTING	POINTING	On-chip summing requested	N	N
Pointing RA	189.250189	189.2661171223791	Subarray requested	NONE	NONE
Pointing Dec	62.191111	62.21759417381417	Alternating exposures requested	N	N
Pointing Roll	44.304460	44.49905168845052	Primary exposure time	0.000000	3.1
SIM focus pos (mm)	-0.782348	-0.7809083437167272			
SIM defocus (mm)	0	0.001439871863259334			
SIM translation stage pos (mm)	-233.592463	-233.5874344608287			
SIM translation stage offset (mm)	0	-0.005018542100998502			
Observation start time	91086964.184000	91085988.53832901			
Observation start date	2000-11-20T05:55:00	2000-11-20T05:39:48			
Observation end time	91096823.184000	91097682.763776			
Observation end date	2000-11-20T08:39:19	2000-11-20T08:54:42			
Read mode	TIMED	TIMED			

## 2.3 Aspect



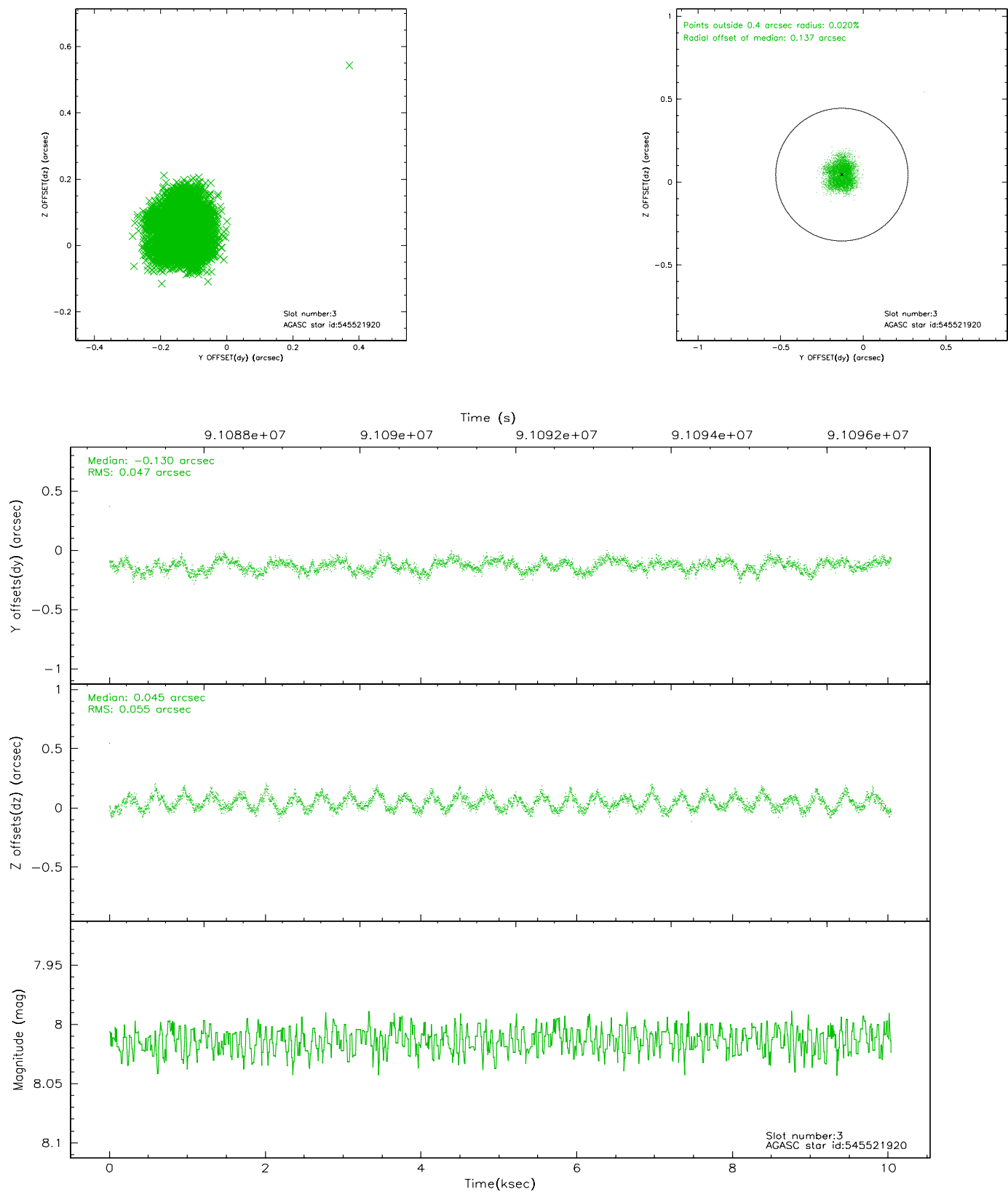


### Slot Statistics

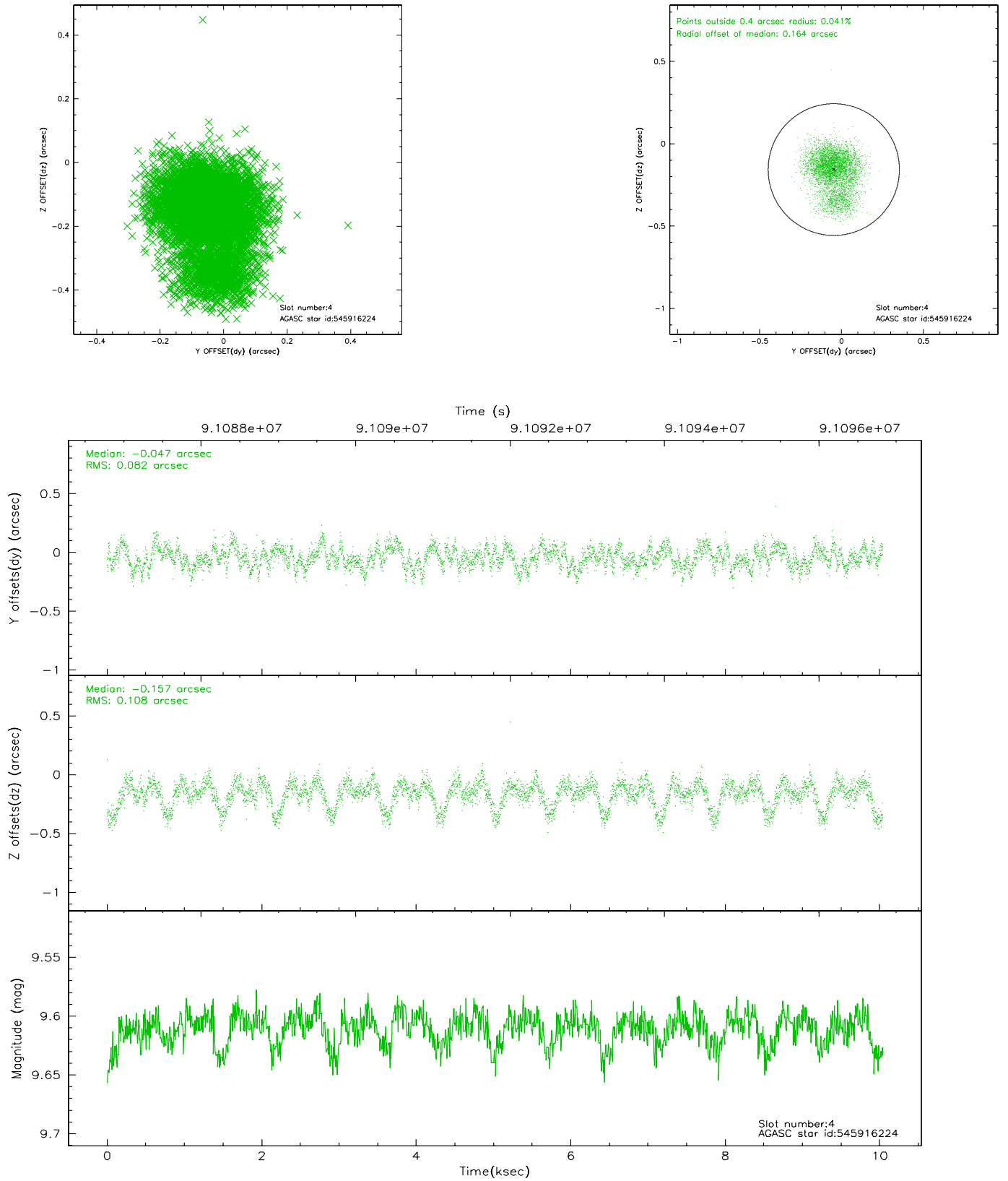
slot	status	id	mag	n_pts	med_dy	med_dz	dr1	dr2	ra	dec	mean_y	mean_z
0	FID	ACIS-I-2	7.16	2449	-0.021	-0.033	0.009	0.016	0.000000	0.000000	-756.66	-836.45
1	FID	ACIS-I-4	7.18	2447	-0.085	0.030	0.006	0.012	0.000000	0.000000	2157.09	1069.52
2	FID	ACIS-I-5	7.23	2449	0.004	0.072	0.009	0.014	0.000000	0.000000	-1809.79	1068.01
3	GUIDE	545521920	8.01	4894	-0.130	0.045	0.077	0.116	190.203465	62.042567	786.25	-1497.29
4	GUIDE	545916224	9.61	4895	-0.047	-0.157	0.145	0.240	188.817359	62.651242	646.53	1687.27
5	GUIDE	545523632	10.04	4891	0.245	0.072	0.123	0.194	188.952319	61.550910	-1973.96	-1290.90
6	GUIDE	545523592	10.23	4893	0.196	0.235	0.156	0.246	188.664324	61.541019	-2350.73	-969.30
7	GUIDE	545916288	10.10	4895	-0.299	-0.202	0.337	0.490	188.813969	62.949161	1395.98	2453.86

## 2.4 Star Slots

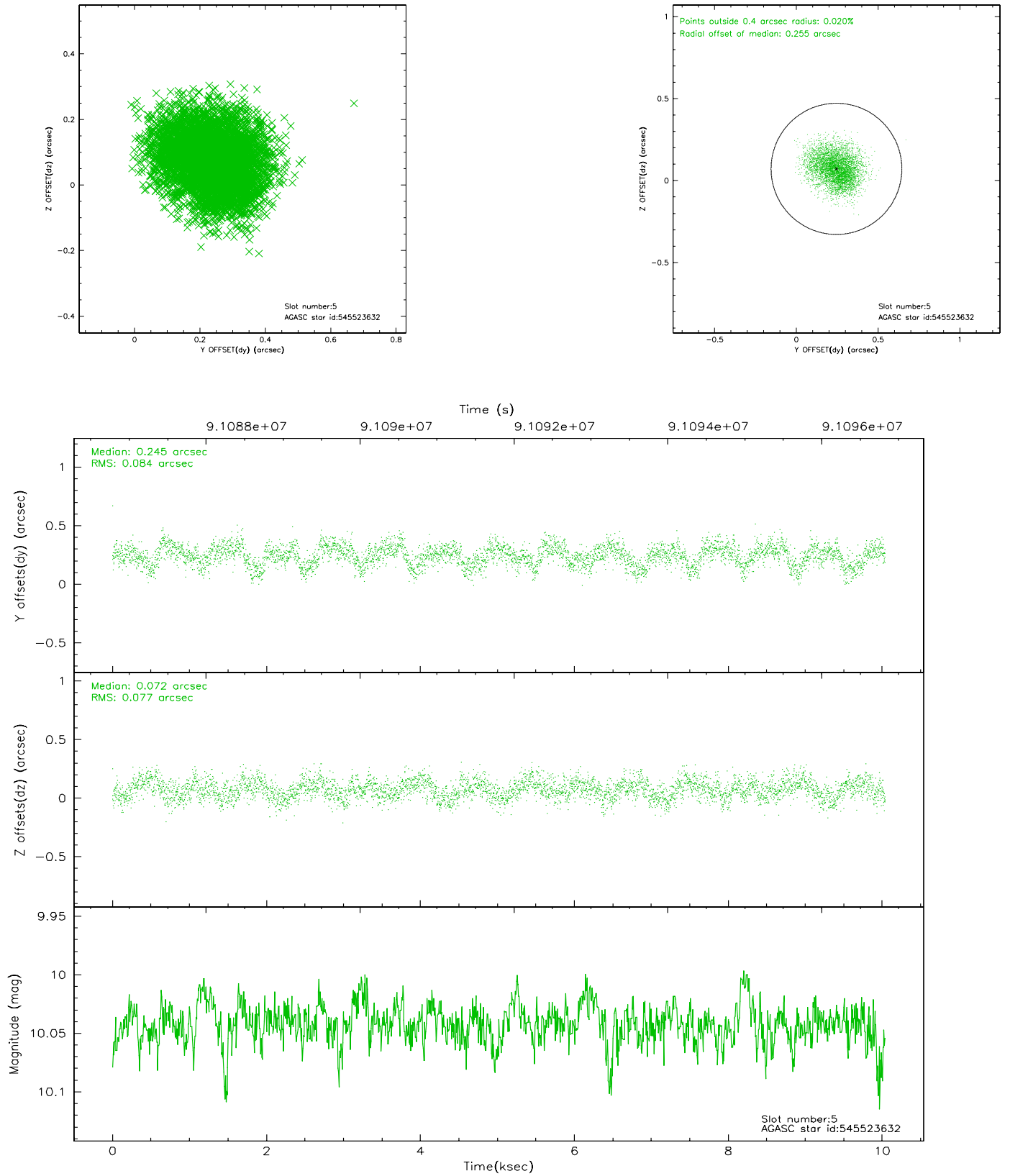
### 2.4.1 Slot 3



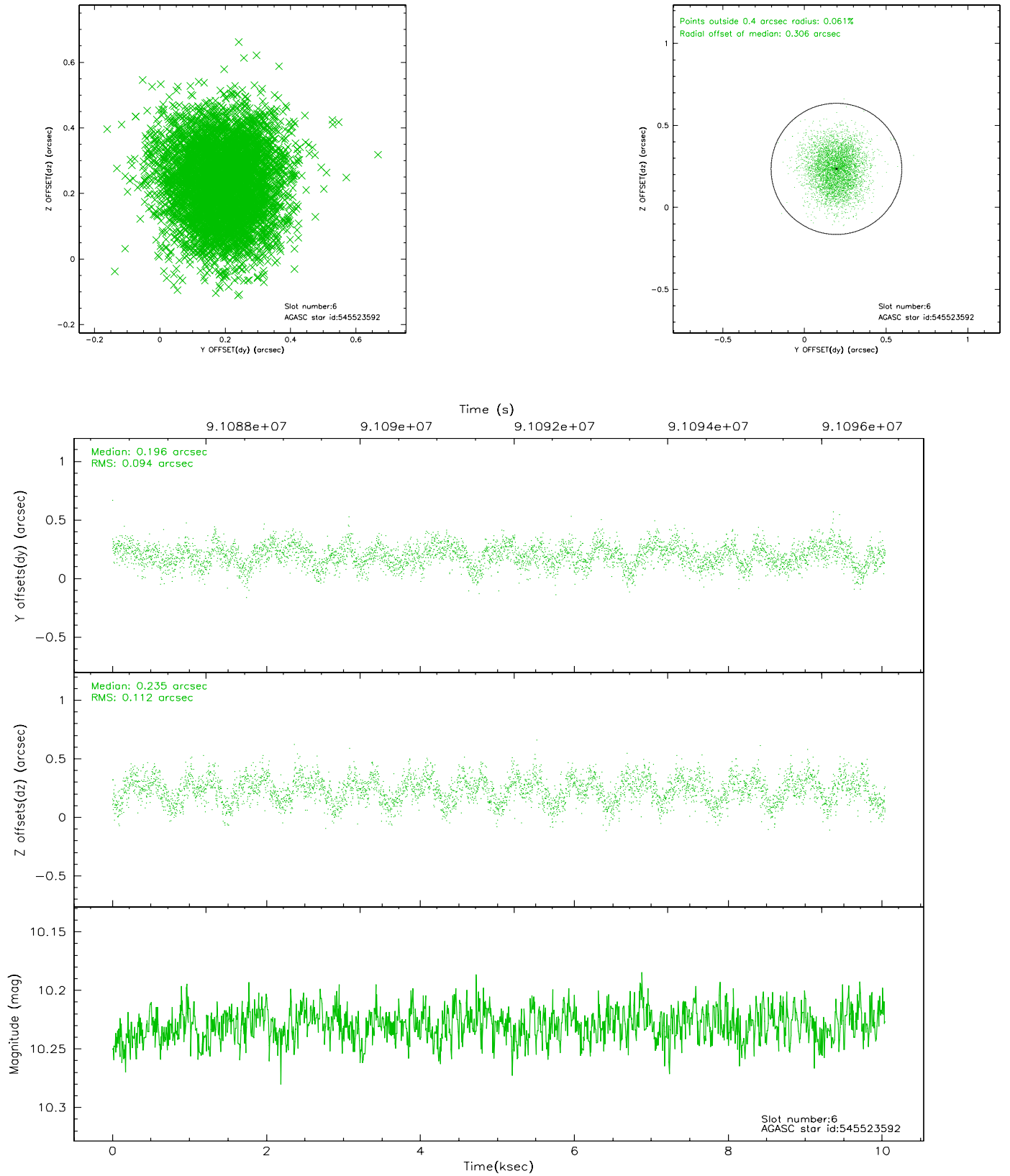
## 2.4.2 Slot 4



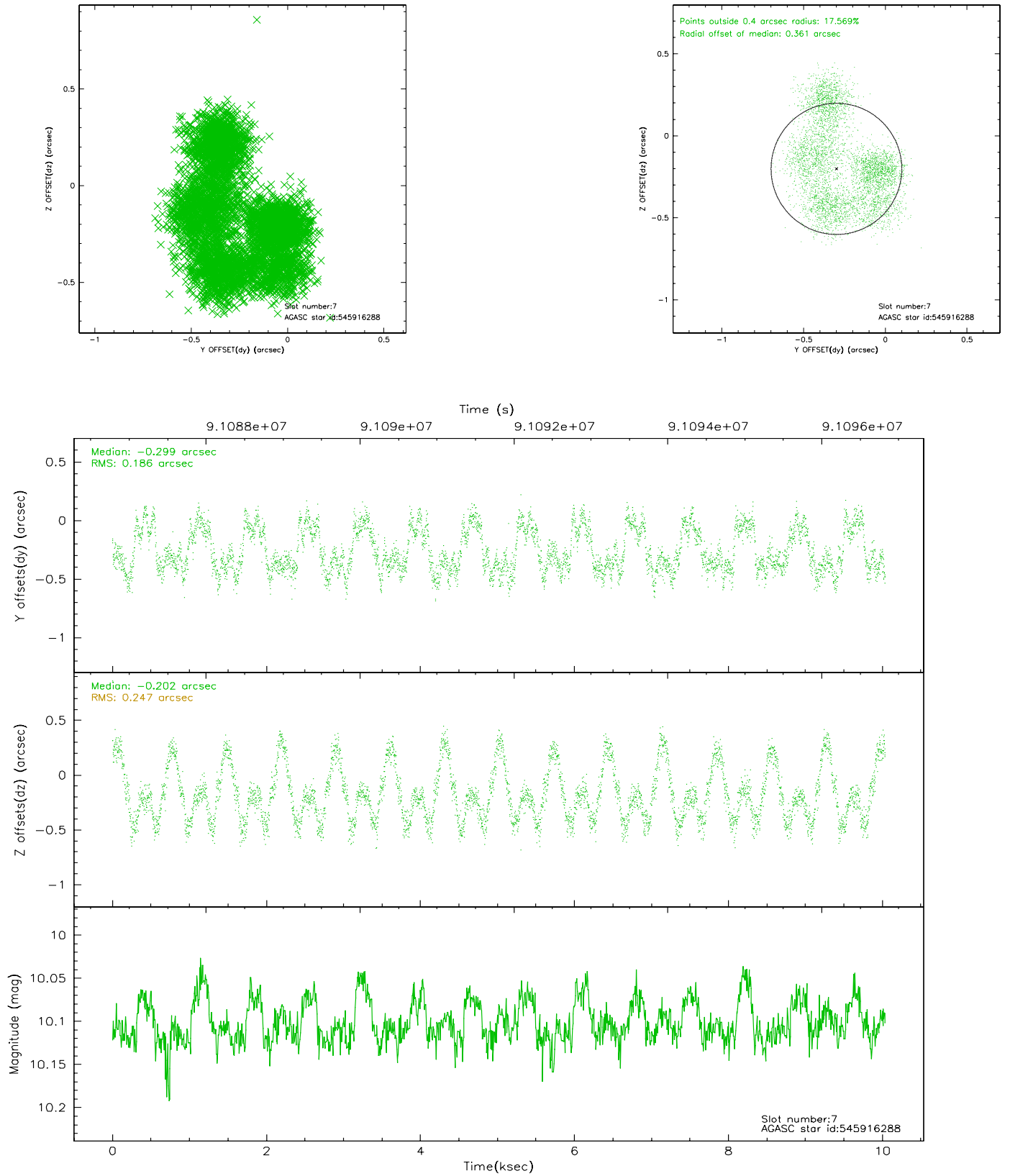
### 2.4.3 Slot 5



## 2.4.4 Slot 6

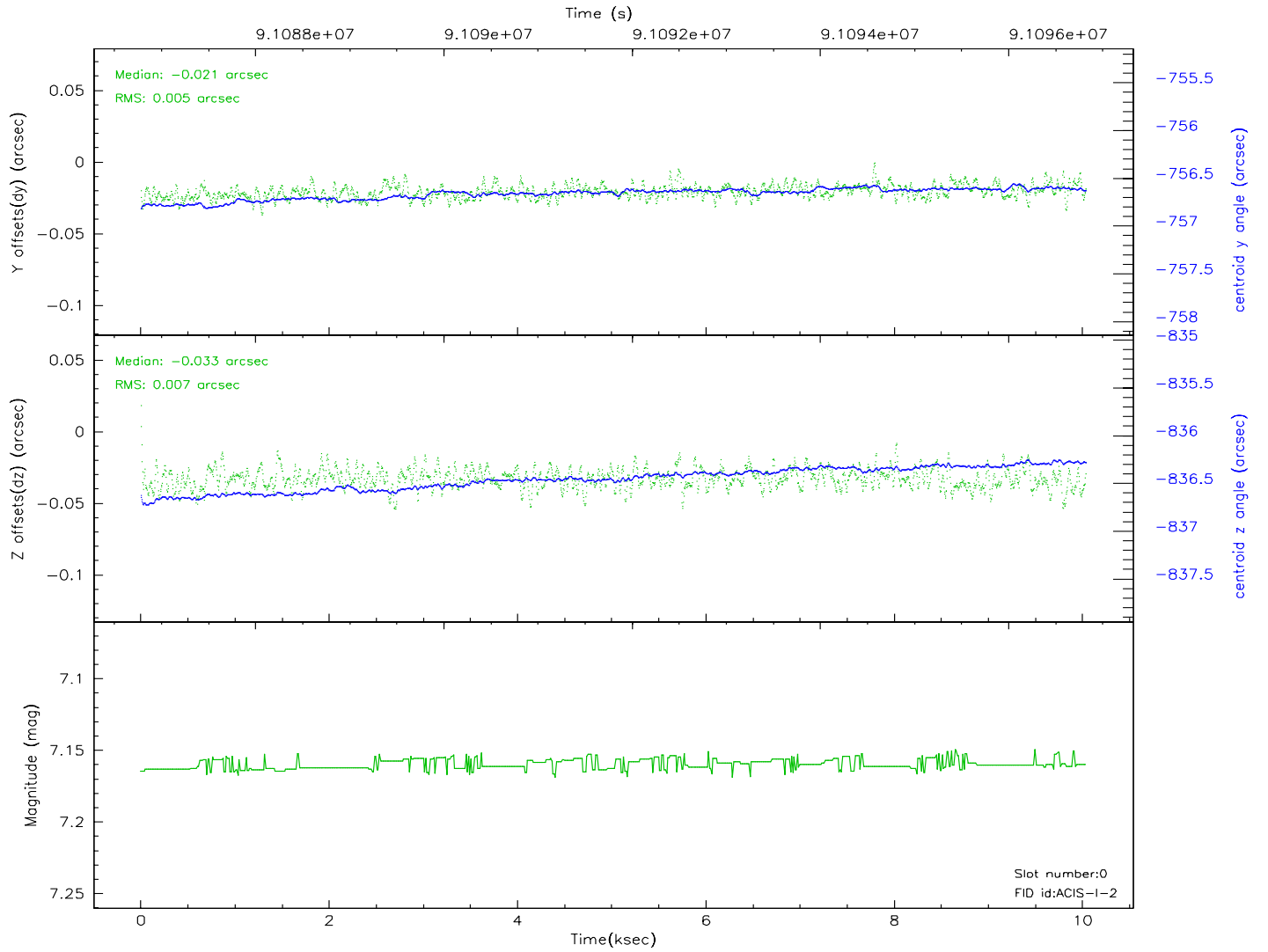
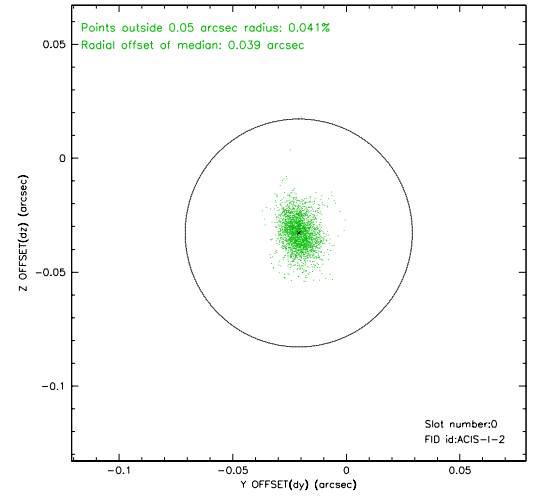
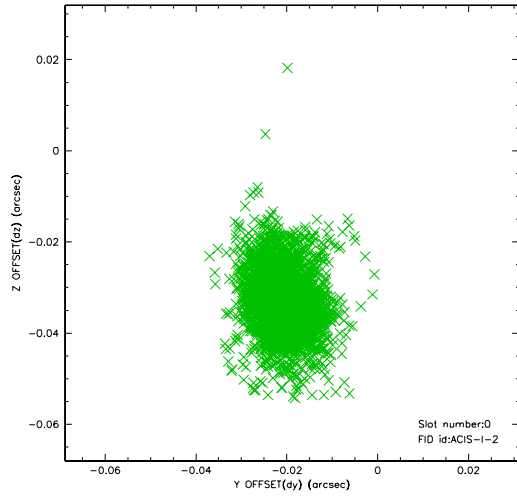


## 2.4.5 Slot 7

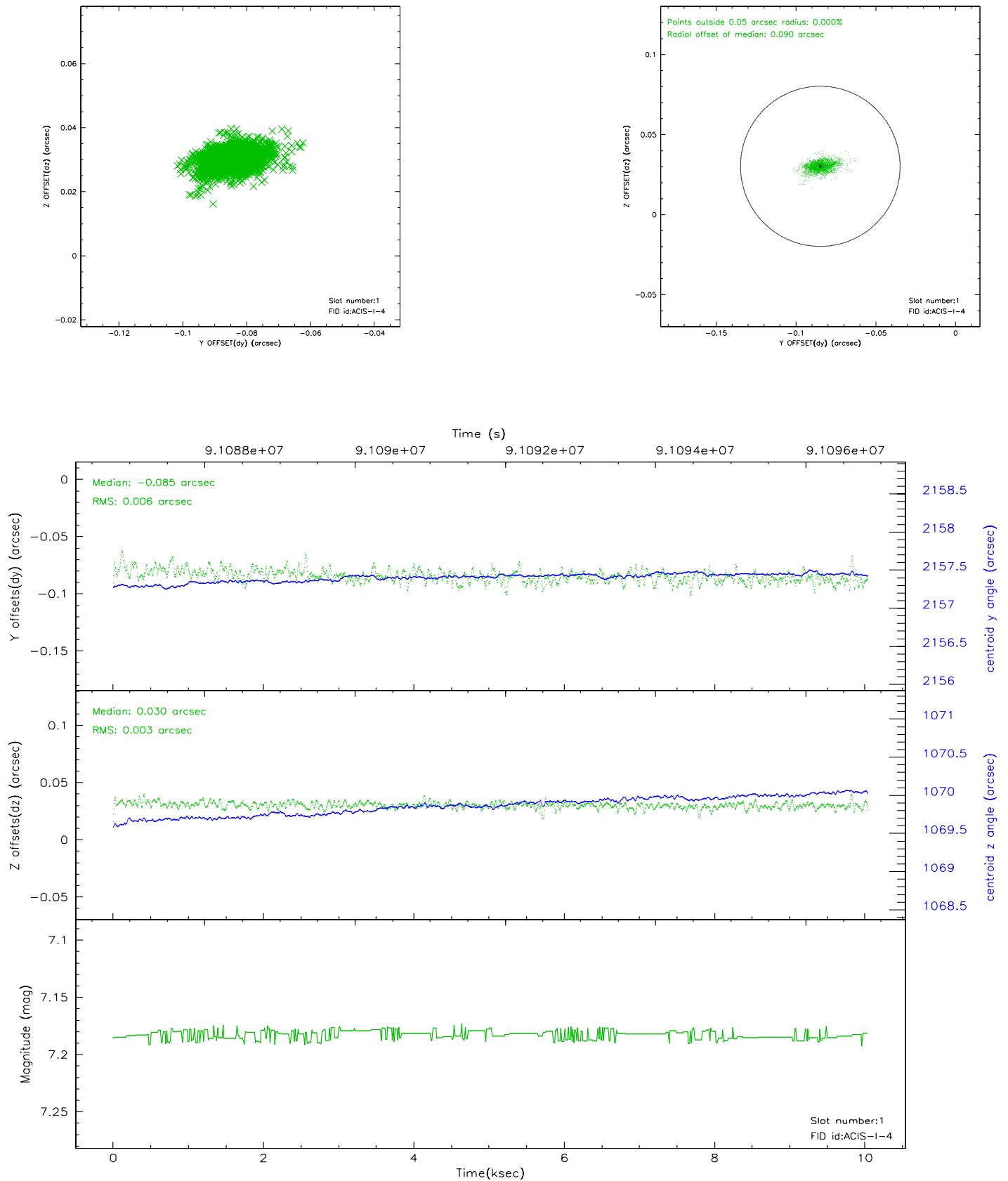


## 2.5 FID Slots

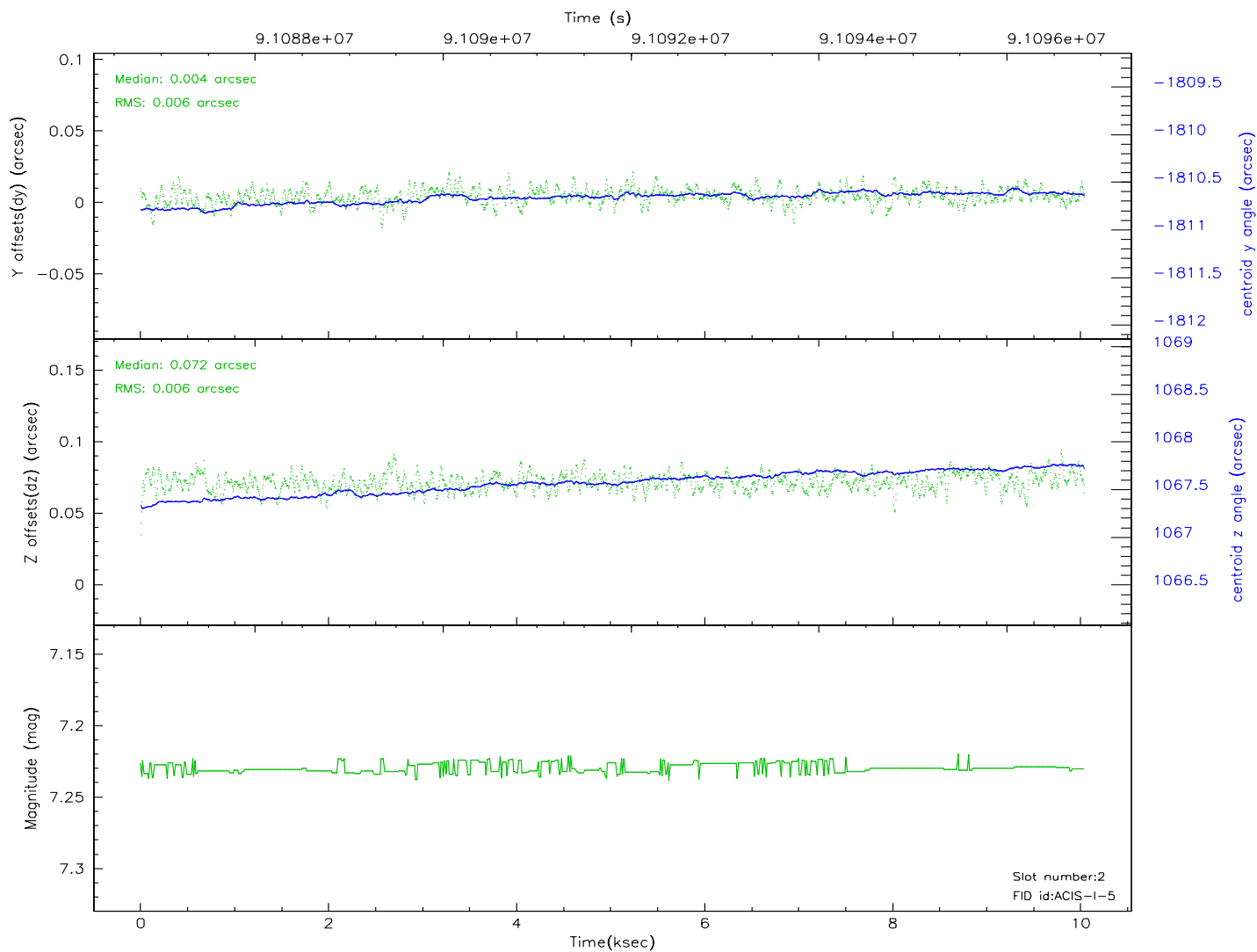
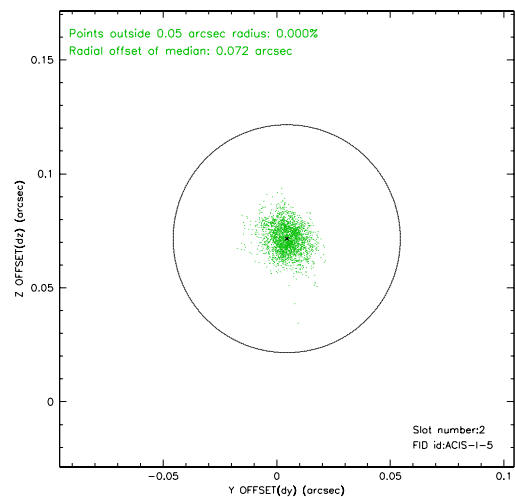
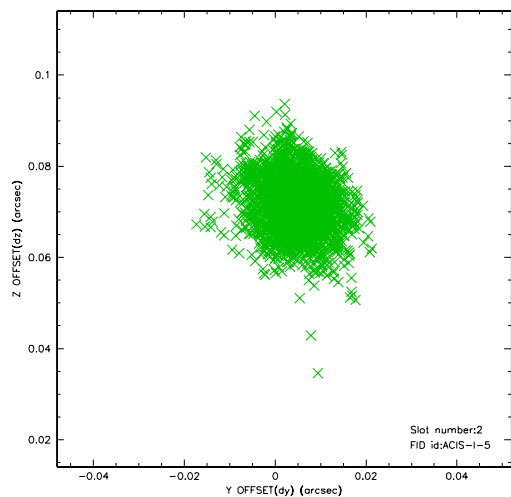
### 2.5.1 Slot 0



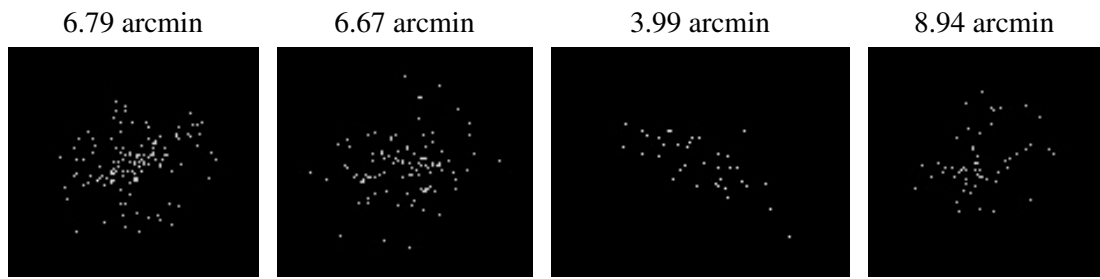
## 2.5.2 Slot 1



## 2.5.3 Slot 2



### 3 Point Sources



## A Summary

### A.1 Status

V&V Scientist	Beth Sundheim
V&V Date (YYYY-MM-DD)	2007.06.18
V&V Edition	1
V&V Disposition and Status	OK
V&V Charge Time	10

### A.2 Comments