

# V&V Reference Report

## L2 ASCDS Version : 7.6.10

Observation 2344 - L2 Version 001  
Chandra X-Ray Center

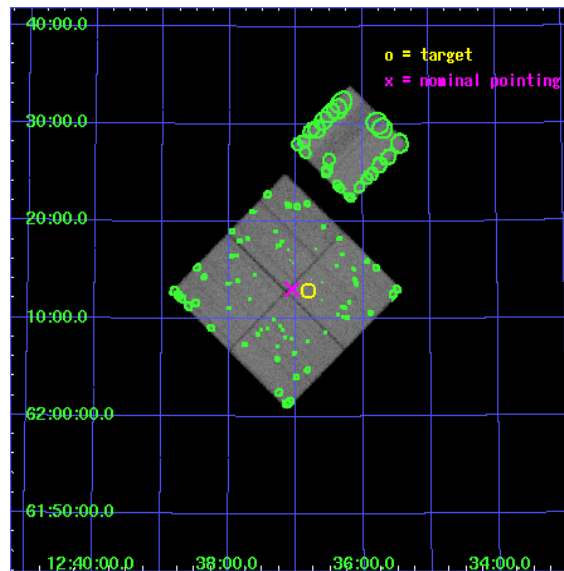
L2 Processing Date : Jun 18 2007

## Contents

<b>1</b>	<b>Front</b>	<b>2</b>
<b>2</b>	<b>OBI</b>	<b>3</b>
2.1	OBI . . . . .	3
2.1.1	Images . . . . .	3
2.1.2	Bias . . . . .	3
2.1.3	Parameters . . . . .	4
2.1.4	Events . . . . .	4
2.2	Compared Parameters . . . . .	5
2.3	Aspect . . . . .	6
2.4	Star Slots . . . . .	9
2.4.1	Slot 3 . . . . .	9
2.4.2	Slot 4 . . . . .	10
2.4.3	Slot 5 . . . . .	11
2.4.4	Slot 6 . . . . .	12
2.4.5	Slot 7 . . . . .	13
2.5	FID Slots . . . . .	14
2.5.1	Slot 0 . . . . .	14
2.5.2	Slot 1 . . . . .	15
2.5.3	Slot 2 . . . . .	16
<b>3</b>	<b>Point Sources</b>	<b>17</b>
<b>A</b>	<b>Summary</b>	<b>18</b>
A.1	Status . . . . .	18
A.2	Comments . . . . .	18

# 1 Front

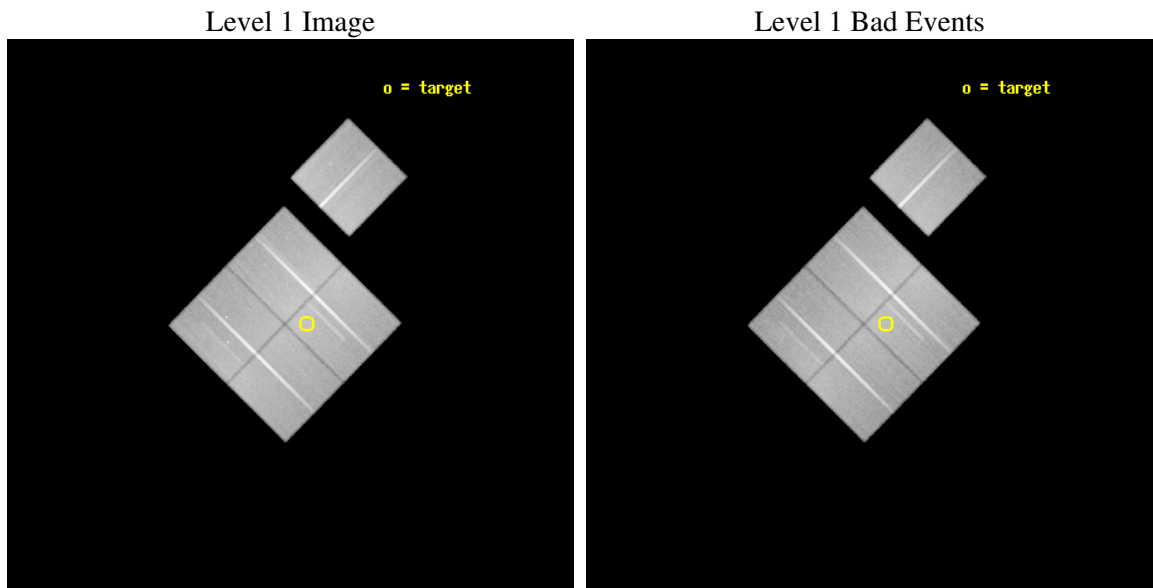
seq_num	900030
obs_id	2344
title	HDF NORTH SURVEY
observer	Prof. Gordon Garmire
object	HDF NORTH
dtcycle	0
cycle	P
ra_targ	189.205833
dec_targ	62.21611
ra_nom	189.26607021345
dec_nom	62.217599956914
roll_nom	44.50109565478
revision	2
ontime	92097.817902431
livetime	90894.492110108
ontime0	92100.958832741
ontime1	92094.676942199
ontime2	92094.676942199
ontime3	92097.817902431
ontime6	92097.817882523
l2events	483792



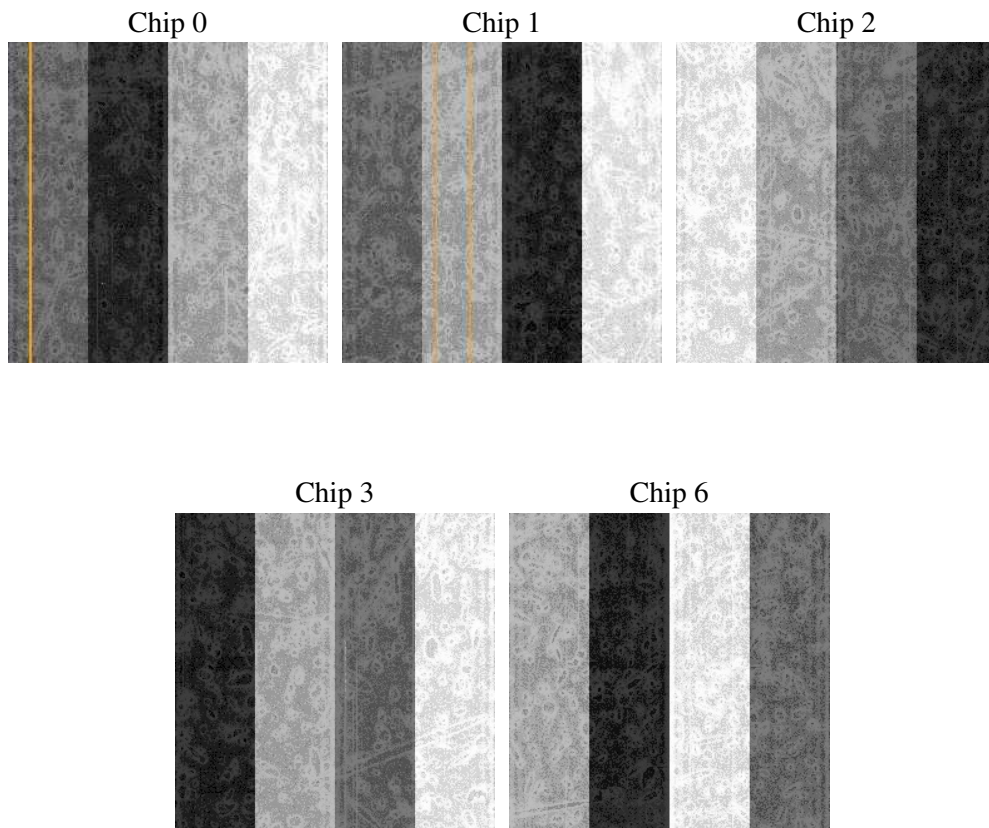
## 2 OBI

### 2.1 OBI

#### 2.1.1 Images



#### 2.1.2 Bias



### 2.1.3 Parameters

obi_num	1
ascdsver	7.6.10
caldbver	3.4.0
date	2007-06-18T09:09:00
revision	2

sched_exp_time	91992.617000
ontime	92097.817902431
ontime0	92100.958832741
ontime1	92094.676942199
ontime2	92094.676942199
ontime3	92097.817902431
ontime6	92097.817882523
l1events	4184674

### 2.1.4 Events

	ccd 0	ccd 1	ccd 2	ccd 3	ccd 6
level 1 events	774175	784561	894002	863366	868570
rejected events	652663	668838	773779	754530	752249
rejected %	84%	85%	86%	87%	86%

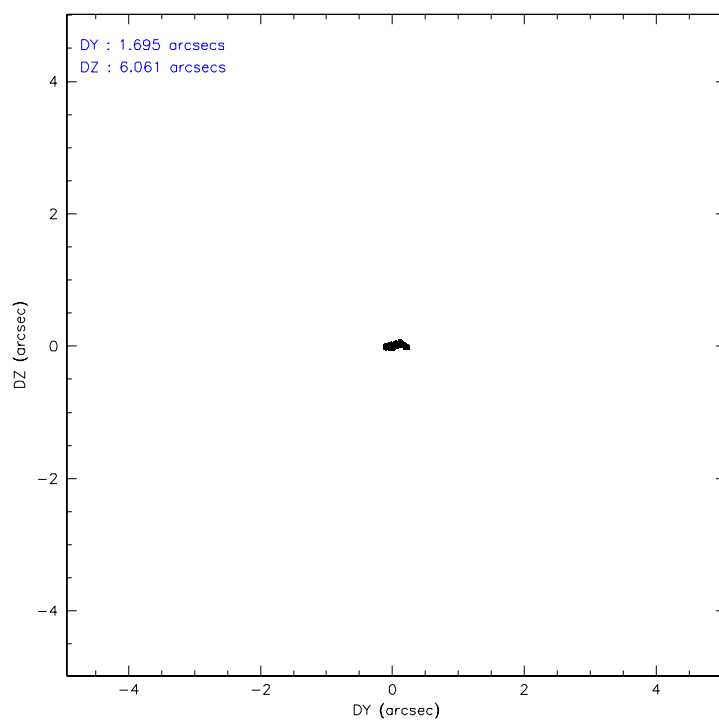
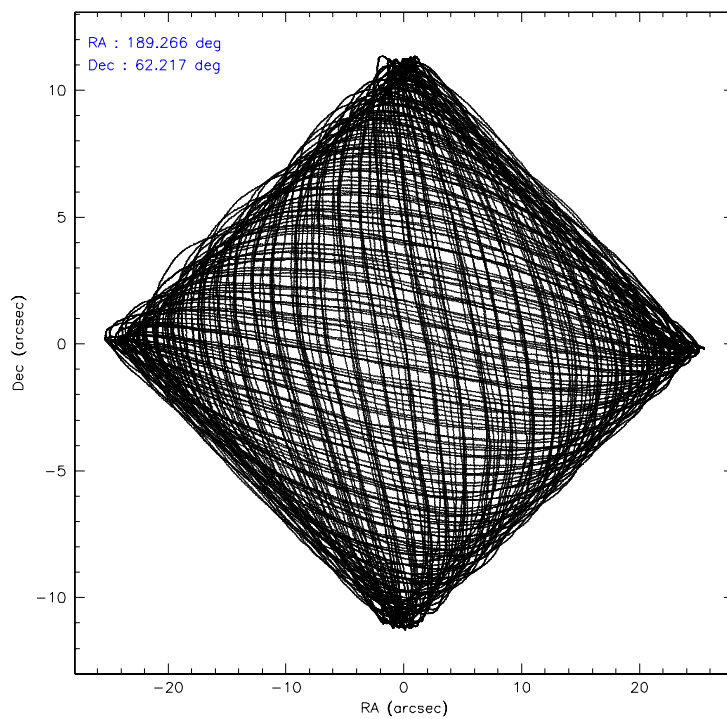
	ccd 0	ccd 1	ccd 2	ccd 3	ccd 6
grade 0 events	59613	53778	59184	52787	55234
	7%	6%	6%	6%	6%
grade 1 events	528	465	548	441	437
	0%	0%	0%	0%	0%
grade 2 events	25878	22853	26009	20846	24223
	3%	2%	2%	2%	2%
grade 3 events	9373	9985	8346	8906	8960
	1%	1%	0%	1%	1%
grade 4 events	8929	9878	9433	8855	8999
	1%	1%	1%	1%	1%
grade 5 events	19735	21136	19082	21142	23233
	2%	2%	2%	2%	2%
grade 6 events	17723	19236	17257	17448	18908
	2%	2%	1%	2%	2%
grade 7 events	632396	647230	754143	732941	728576
	81%	82%	84%	84%	83%

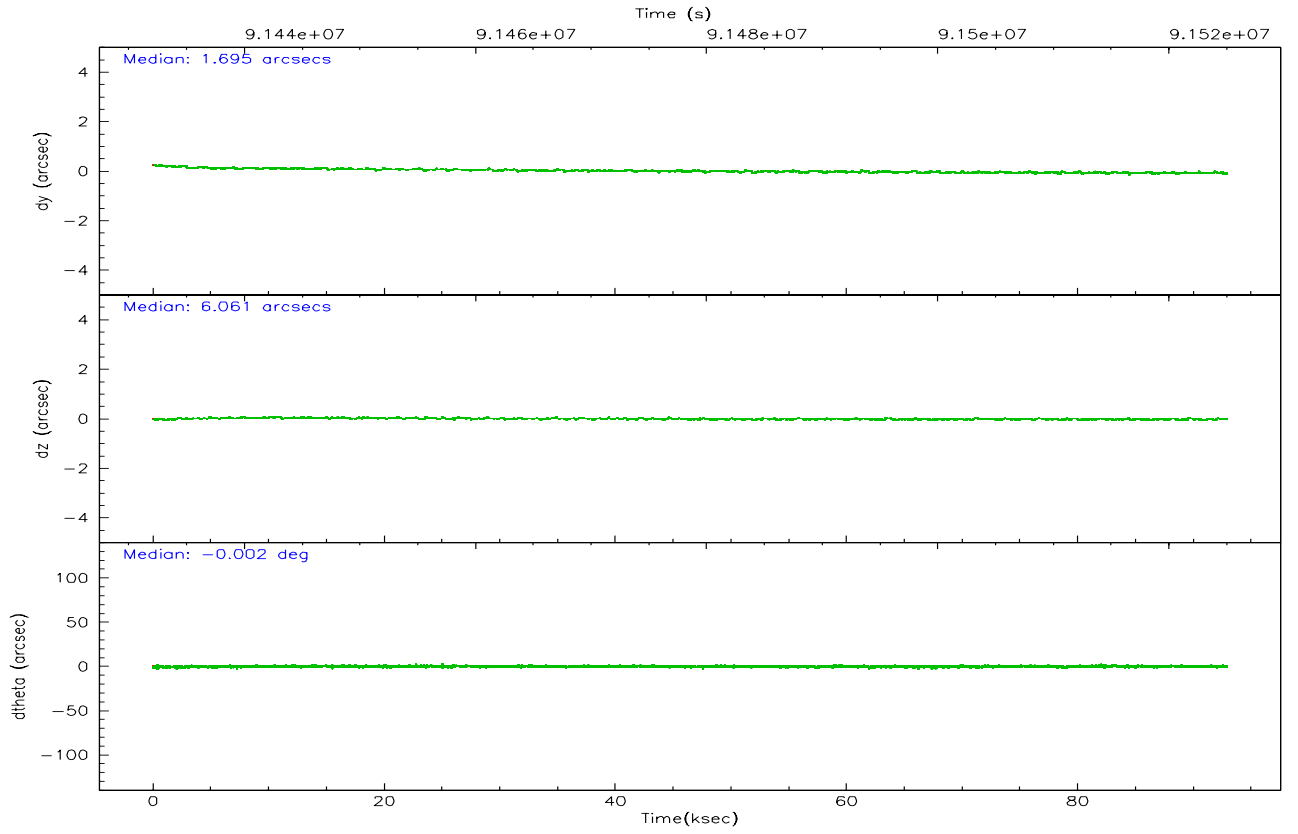
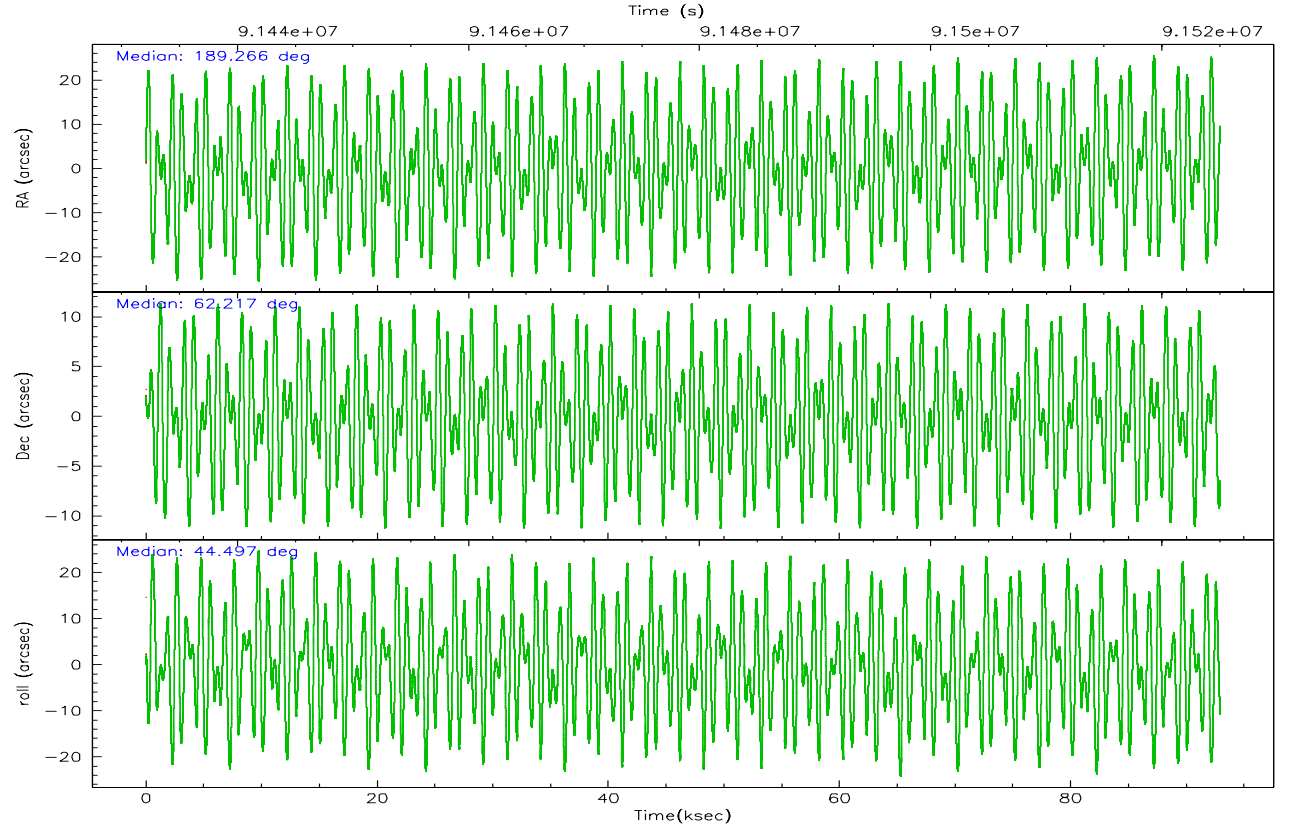


## 2.2 Compared Parameters

Parameter	Planned	Actual	Parameter	Planned	Actual
Instrument	ACIS	ACIS	Obspar format version number	6	6
Detector	ACIS-01236	ACIS-01236	Obspar file type	PREDICTED	ACTUAL
Grating	NONE	NONE	Obspar update status	NONE	UPDATED
Data mode	FAINT	FAINT	Number of optional ACIS chips dropped	0	0
Observation mode	POINTING	POINTING	On-chip summing requested	N	N
Pointing RA	189.250198	189.266070213447	Subarray requested	NONE	NONE
Pointing Dec	62.191112	62.2175995691372	Alternating exposures requested	N	N
Pointing Roll	44.306452	44.50109565477966	Primary exposure time	0.000000	3.1
SIM focus pos (mm)	-0.782348	-0.7809083437167272			
SIM defocus (mm)	0	0.001439871863259334			
SIM translation stage pos (mm)	-233.592463	-233.5874344608287			
SIM translation stage offset (mm)	0	-0.005018542100998502			
Observation start time	91433050.184000	91431711.314033			
Observation start date	2000-11-24T06:03:06	2000-11-24T05:41:51			
Observation end time	91525043.184000	91526251.16764399			
Observation end date	2000-11-25T07:36:19	2000-11-25T07:57:31			
Read mode	TIMED	TIMED			

## 2.3 Aspect



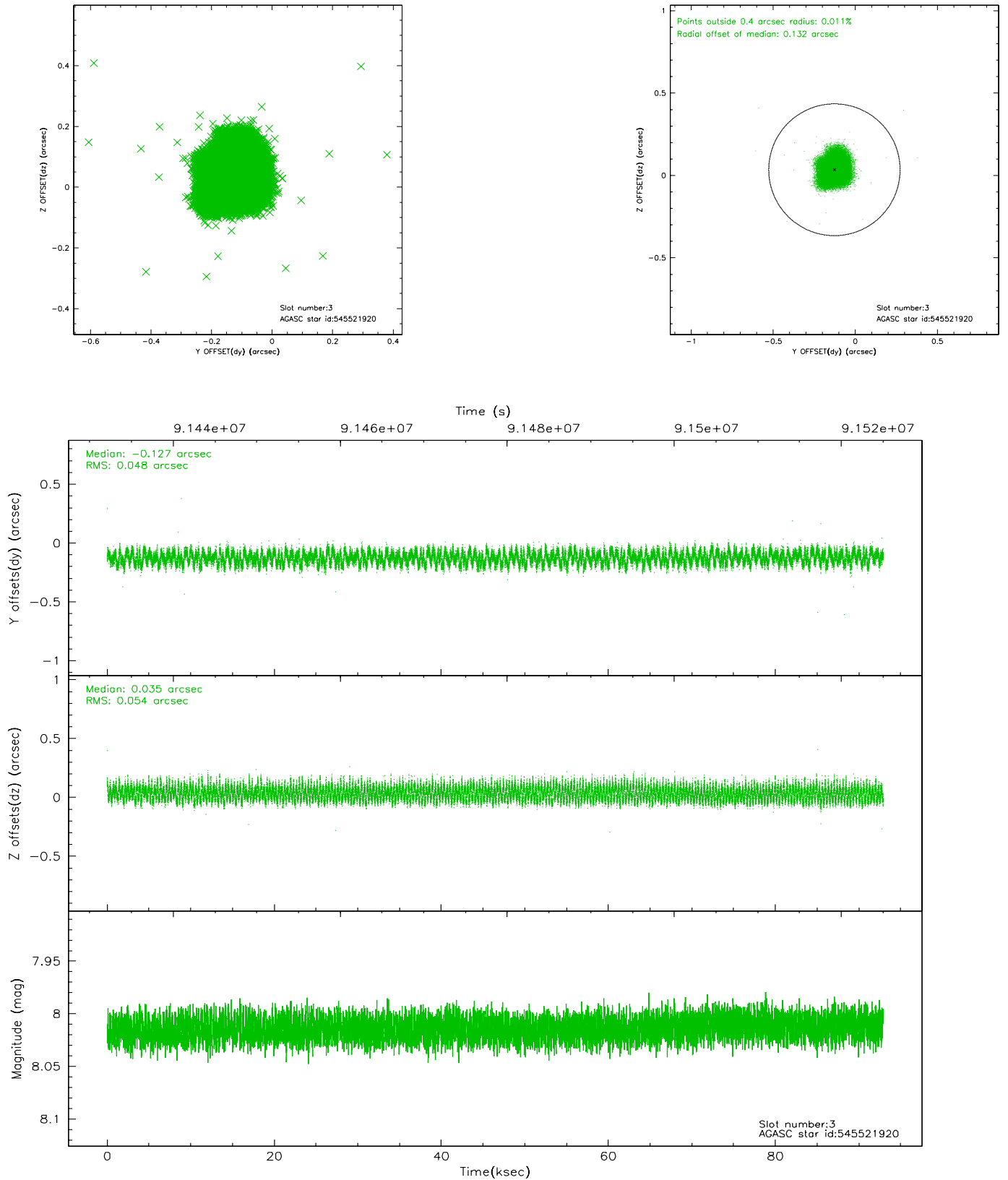


### Slot Statistics

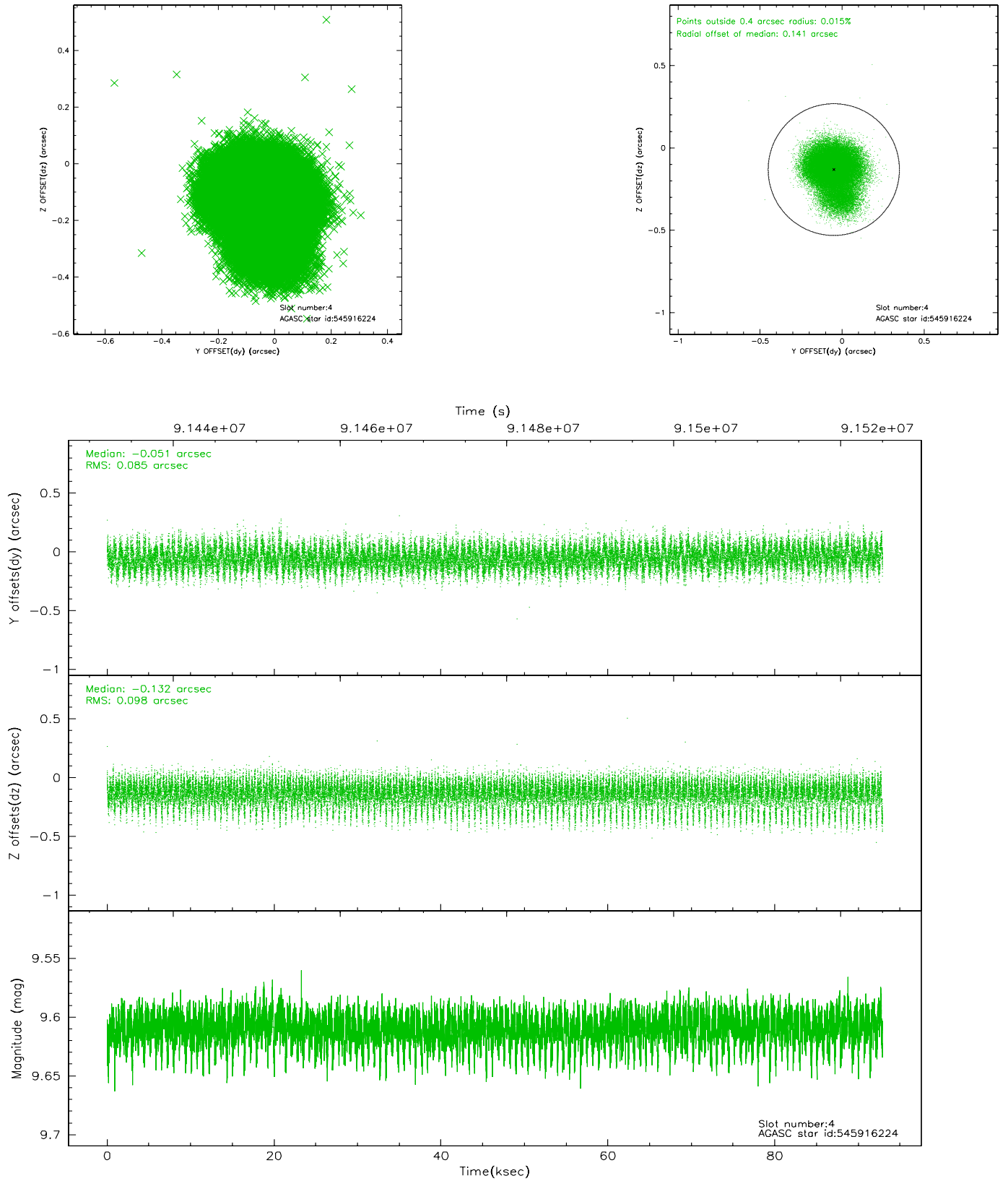
slot	status	id	mag	n_pts	med_dy	med_dz	dr1	dr2	ra	dec	mean_y	mean_z
0	FID	ACIS-I-2	7.16	22667	-0.025	-0.045	0.009	0.015	0.000000	0.000000	-756.07	-835.84
1	FID	ACIS-I-4	7.18	22663	-0.071	0.036	0.006	0.011	0.000000	0.000000	2157.97	1070.46
2	FID	ACIS-I-5	7.23	22665	-0.005	0.078	0.009	0.014	0.000000	0.000000	-1809.99	1068.24
3	GUIDE	545521920	8.01	45325	-0.127	0.035	0.078	0.117	190.203465	62.042567	787.06	-1497.84
4	GUIDE	545916224	9.61	45291	-0.051	-0.132	0.139	0.225	188.817359	62.651242	647.34	1687.04
5	GUIDE	545523632	10.04	45205	0.236	0.063	0.130	0.208	188.952319	61.550910	-1973.27	-1291.63
6	GUIDE	545523592	10.23	45285	0.180	0.218	0.155	0.247	188.664324	61.541019	-2349.56	-969.48
7	GUIDE	545916288	10.10	45215	-0.269	-0.188	0.320	0.459	188.813969	62.949161	1397.41	2453.48

## 2.4 Star Slots

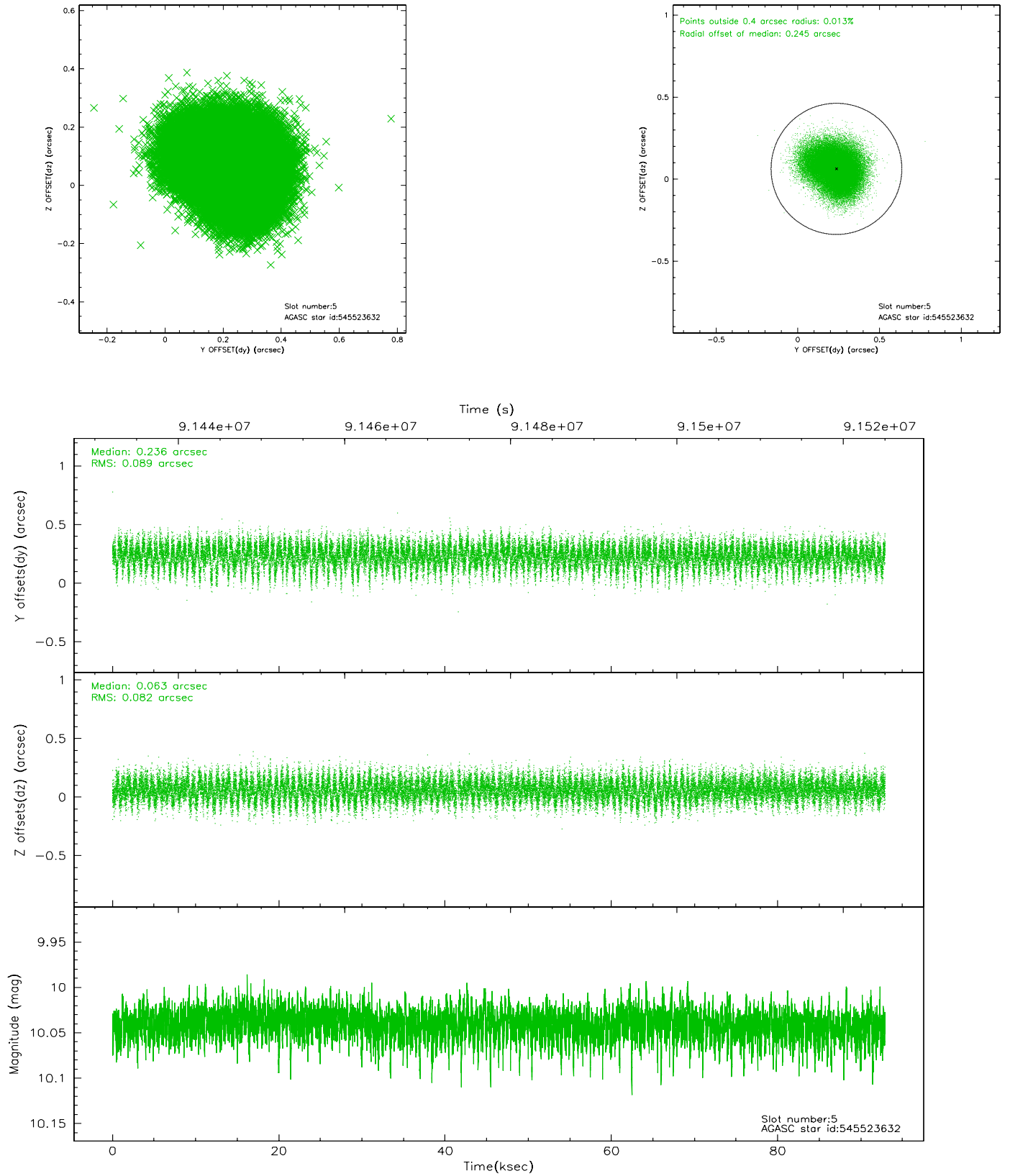
### 2.4.1 Slot 3



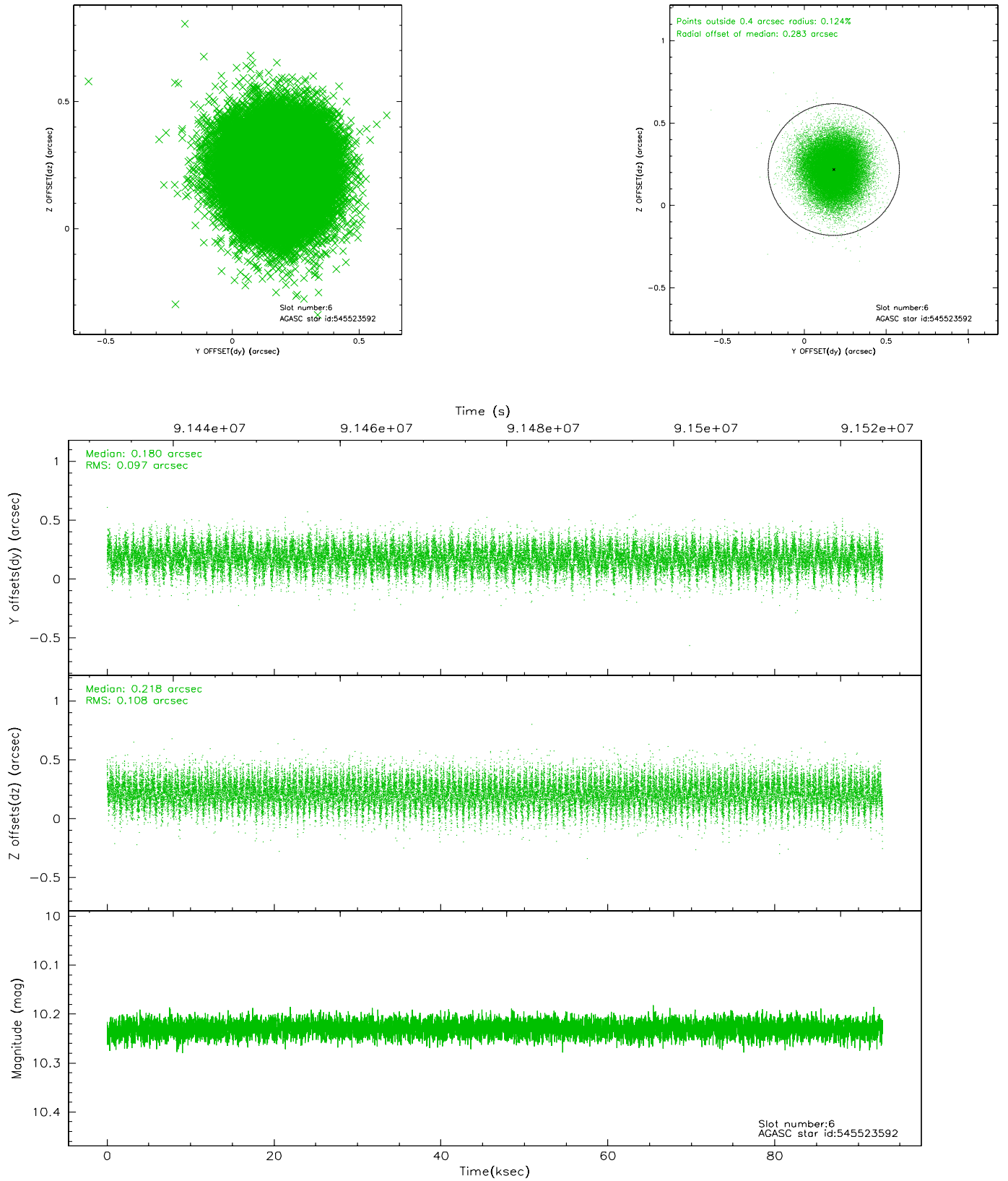
## 2.4.2 Slot 4



### 2.4.3 Slot 5

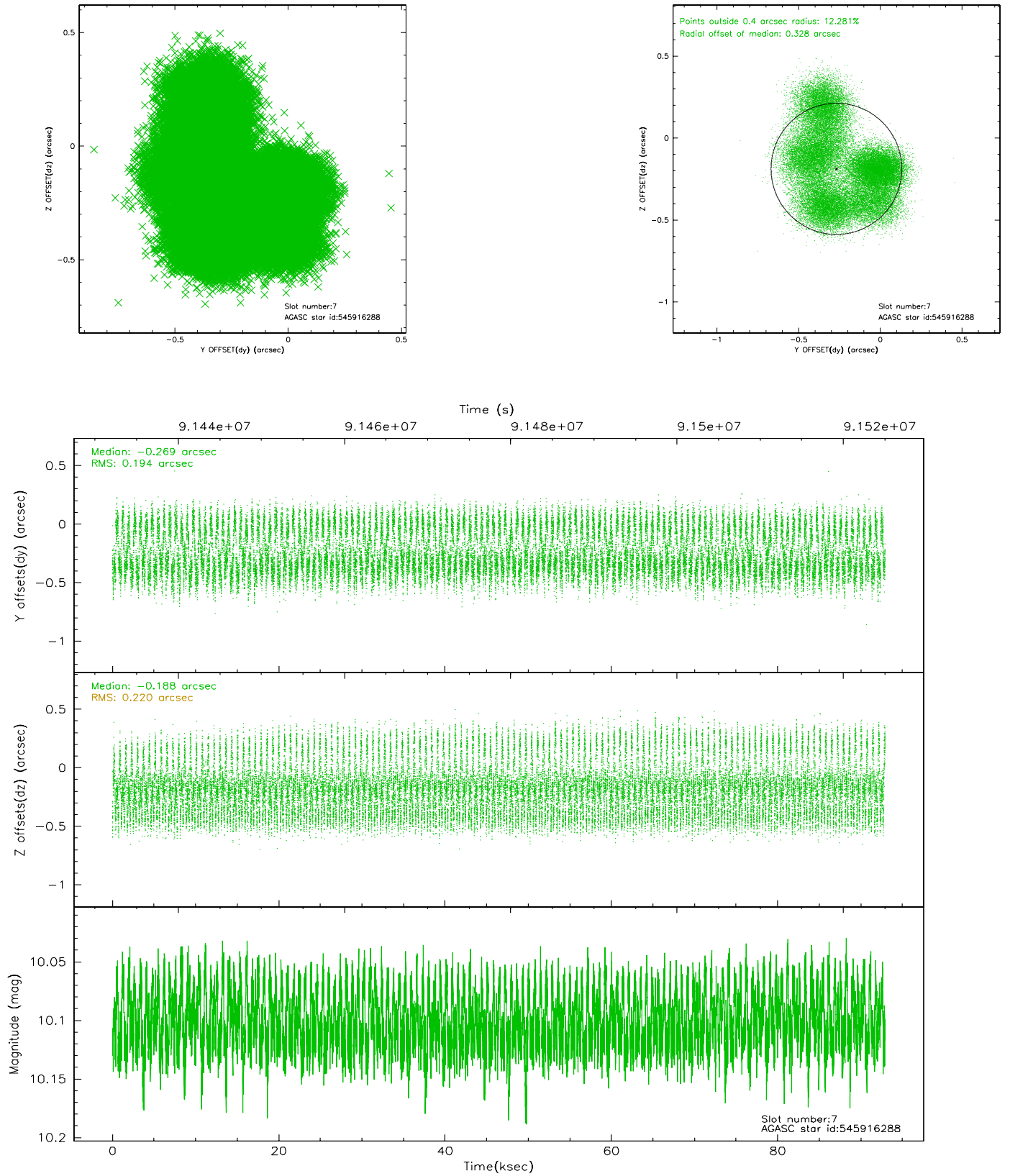


## 2.4.4 Slot 6



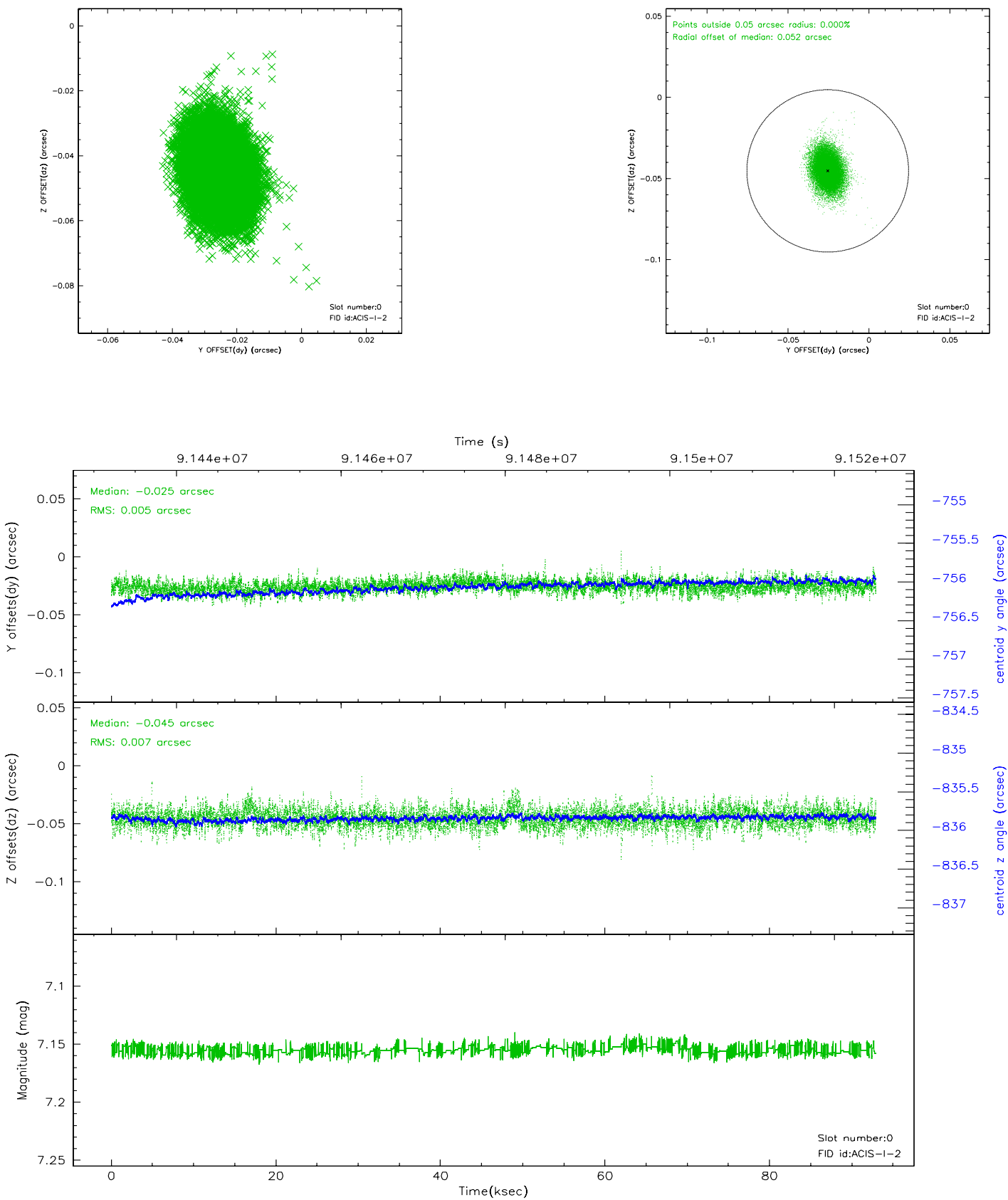


## 2.4.5 Slot 7

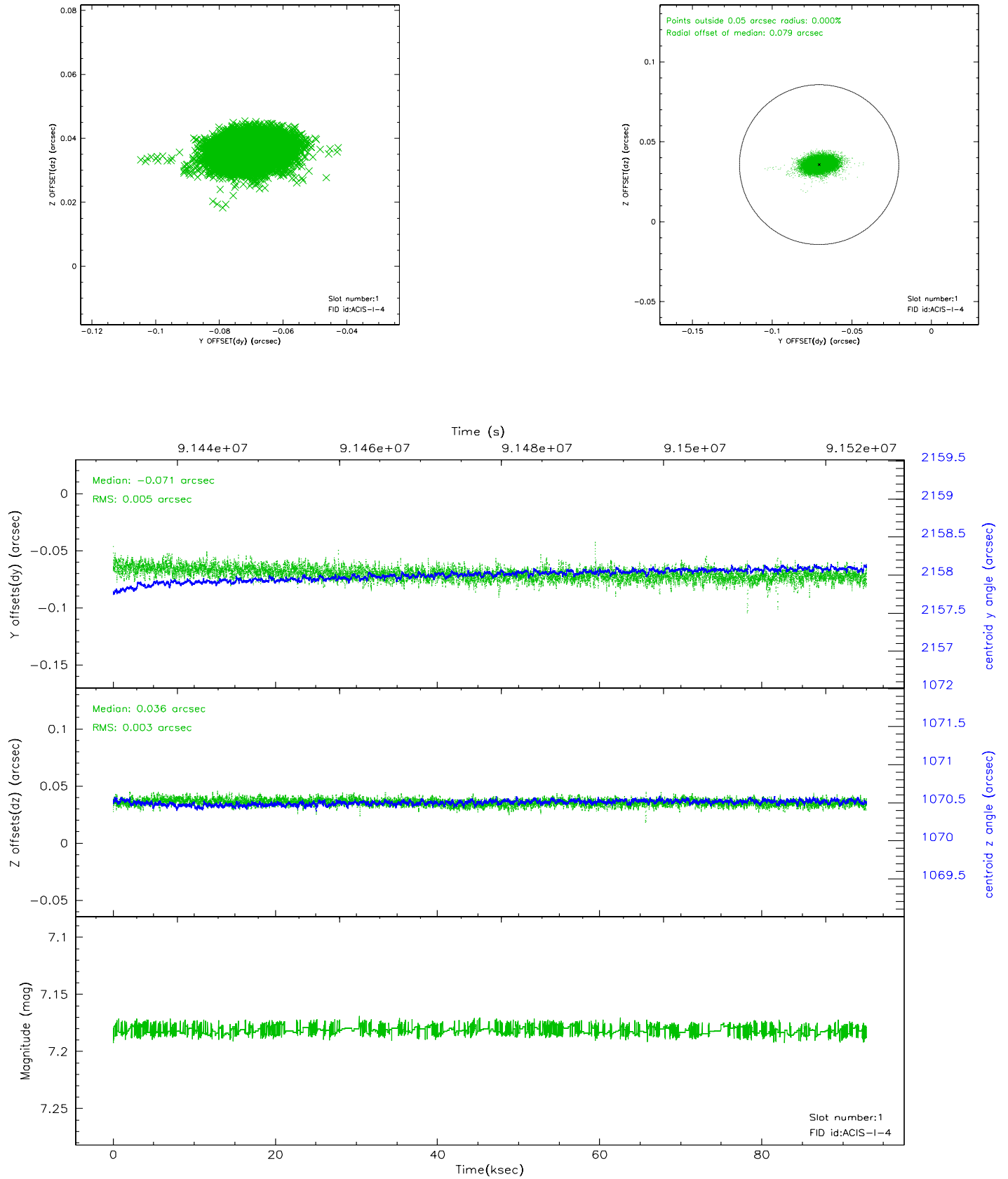


## 2.5 FID Slots

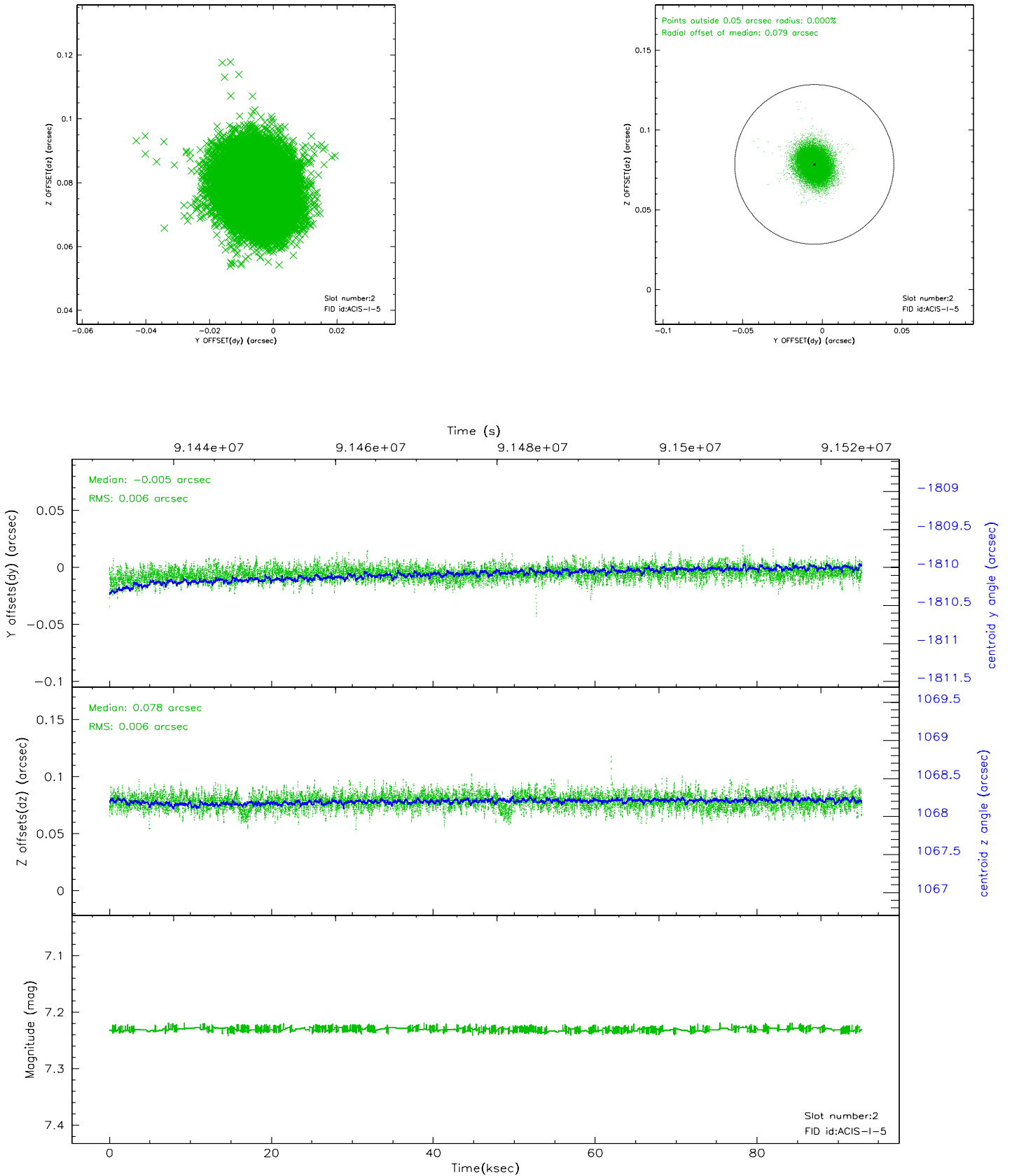
### 2.5.1 Slot 0



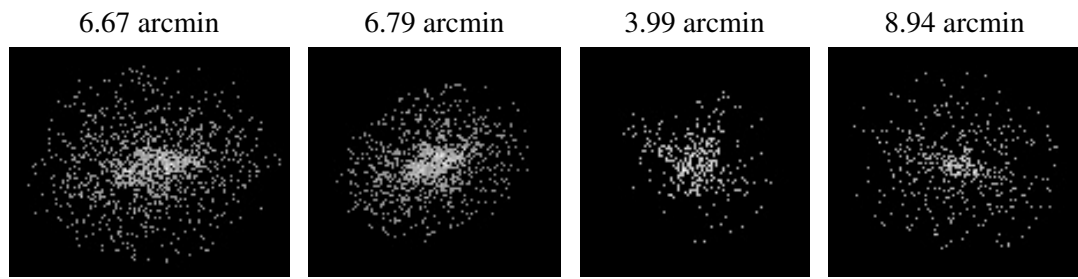
## 2.5.2 Slot 1



### 2.5.3 Slot 2



### 3 Point Sources



## A Summary

### A.1 Status

V&V Scientist	Jen Lauer
V&V Date (YYYY-MM-DD)	2007.06.18
V&V Edition	1
V&V Disposition and Status	OK
V&V Charge Time	91.998

### A.2 Comments