

V&V Reference Report

L2 ASCDS Version : 7.6.10

Observation 2312 - L2 Version 001
Chandra X-Ray Center

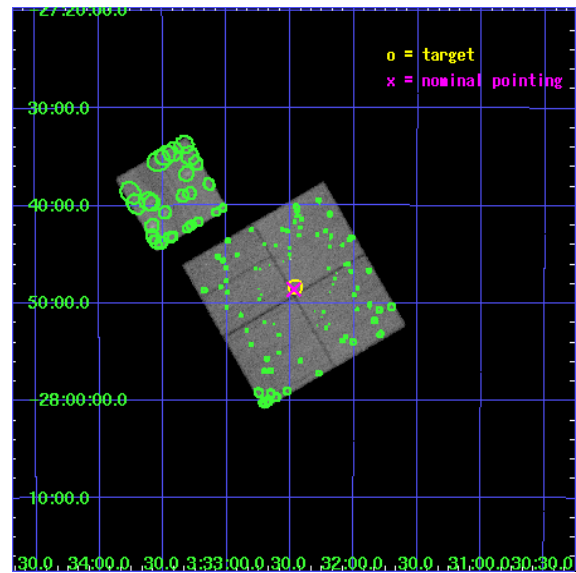
L2 Processing Date : Jun 20 2007

Contents

1	Front	2
2	OBI	3
2.1	OBI	3
2.1.1	Images	3
2.1.2	Bias	3
2.1.3	Parameters	4
2.1.4	Events	4
2.2	Compared Parameters	5
2.3	Aspect	6
2.4	Star Slots	9
2.4.1	Slot 3	9
2.4.2	Slot 4	10
2.4.3	Slot 5	11
2.4.4	Slot 6	12
2.4.5	Slot 7	13
2.5	FID Slots	14
2.5.1	Slot 0	14
2.5.2	Slot 1	15
2.5.3	Slot 2	16
3	Point Sources	17
A	Summary	18
A.1	Status	18
A.2	Comments	18

1 Front

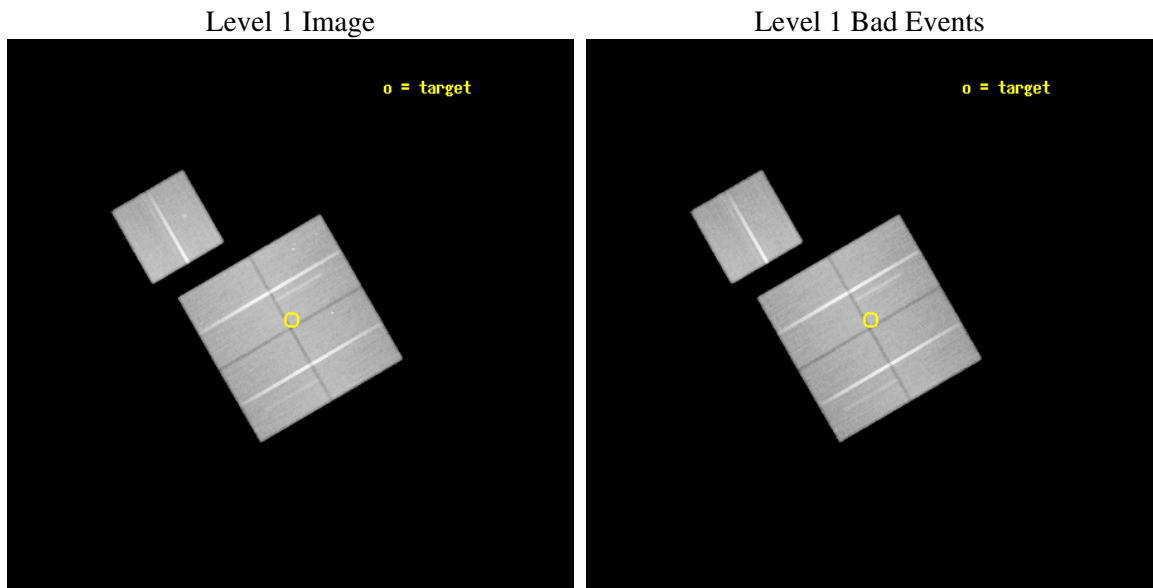
seq_num	900066
obs_id	2312
title	AN ULTRADEEP SURVEY IN THE CHANDRA DEEP FIELD SOUTH
observer	PROF. RICCARDO GIACCONI
object	CDFS
dtcycle	0
cycle	P
ra_targ	53.114583
dec_targ	-27.806389
ra_nom	53.117850094432
dec_nom	-27.810247455753
roll_nom	329.91955283214
revision	2
ontime	125323.53589806
livetime	123686.09163971
ontime0	125323.53586814
ontime1	125326.67683835
ontime2	125329.81784844
ontime3	125323.53589806
ontime6	125332.95876884
l2events	366291



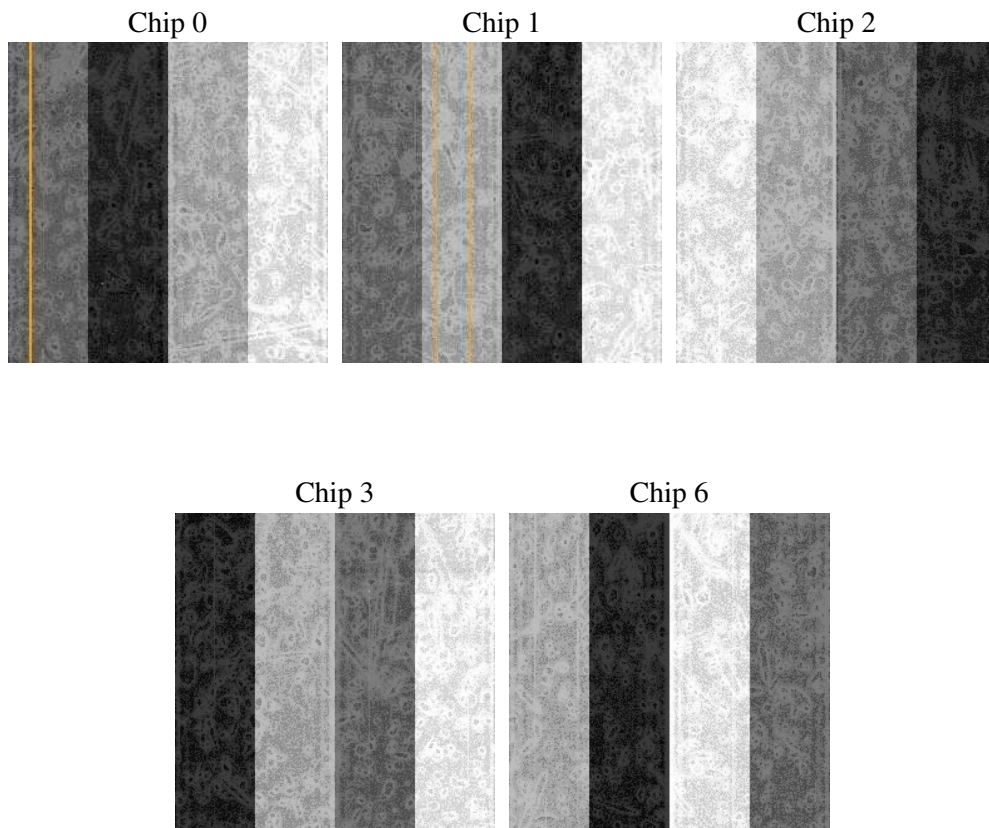
2 OBI

2.1 OBI

2.1.1 Images



2.1.2 Bias



2.1.3 Parameters

obi_num	0
ascdsver	7.6.10
caldsver	3.4.0
date	2007-06-20T11:42:11
revision	2

sched_exp_time	125165.000000
ontime	125323.53589806
ontime0	125323.53586814
ontime1	125326.67683835
ontime2	125329.81784844
ontime3	125323.53589806
ontime6	125332.95876884
llevents	3677727

2.1.4 Events

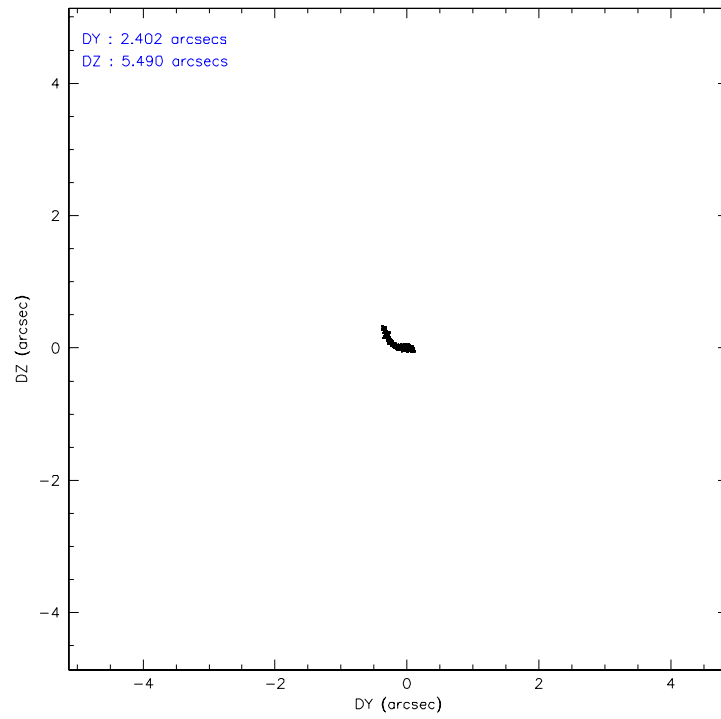
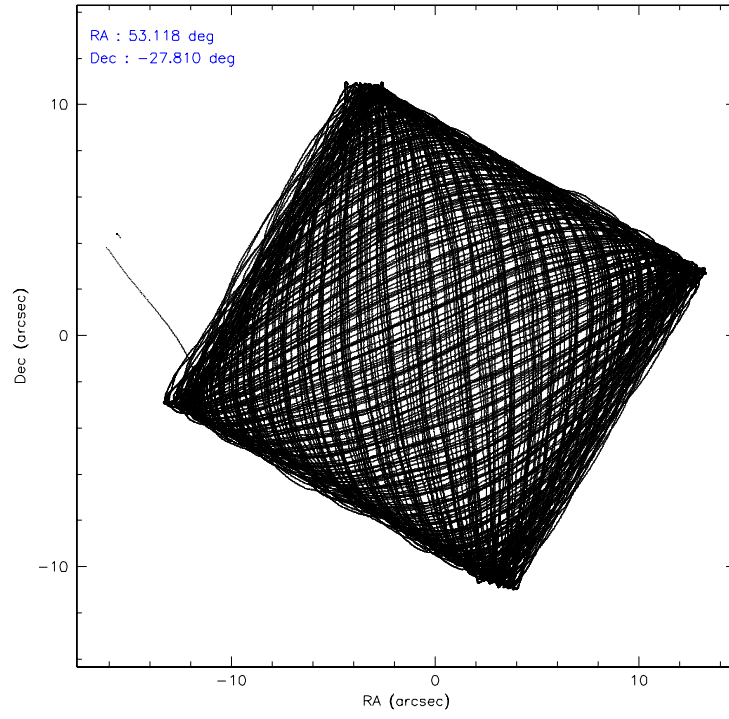
	ccd 0	ccd 1	ccd 2	ccd 3	ccd 6
level 1 events	692627	699705	762143	759464	763788
rejected events	607760	609354	678891	673978	678436
rejected %	87%	87%	89%	88%	88%

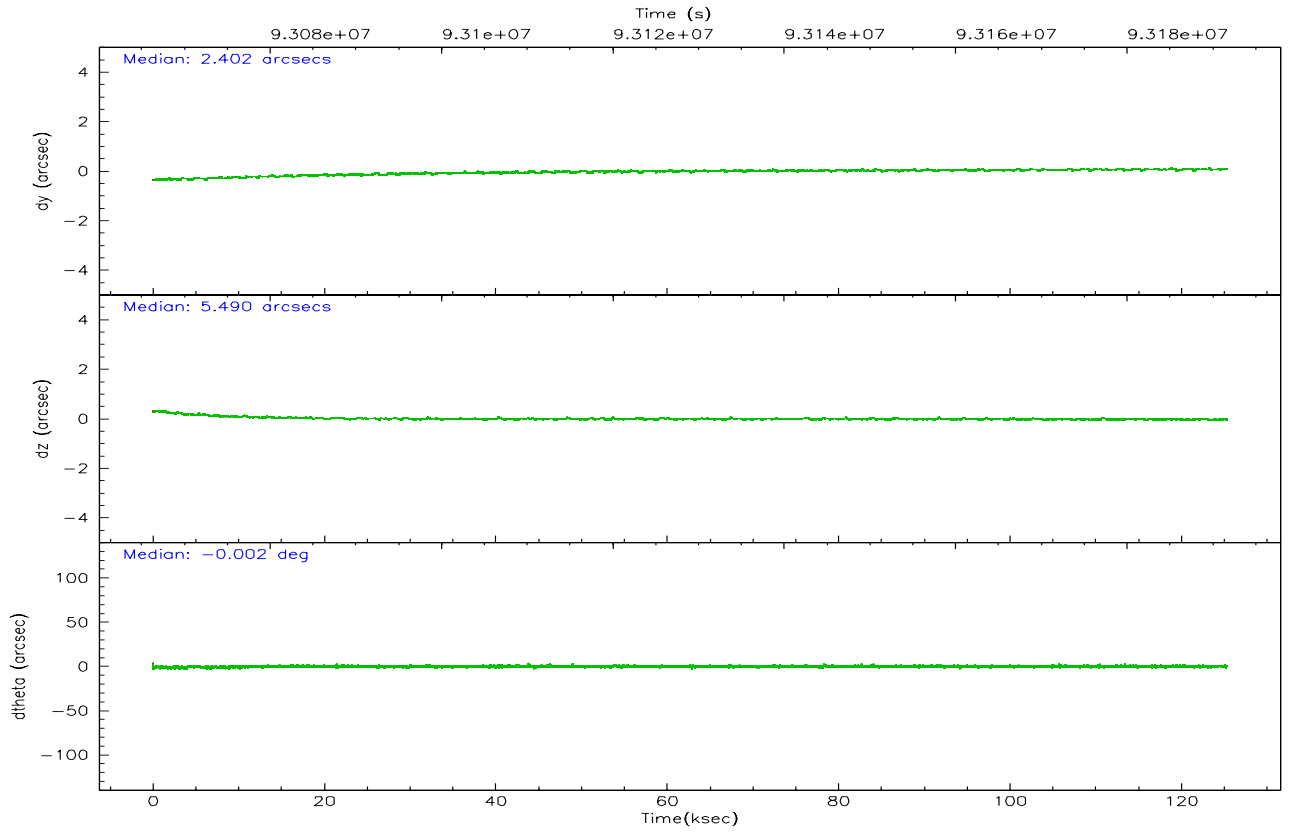
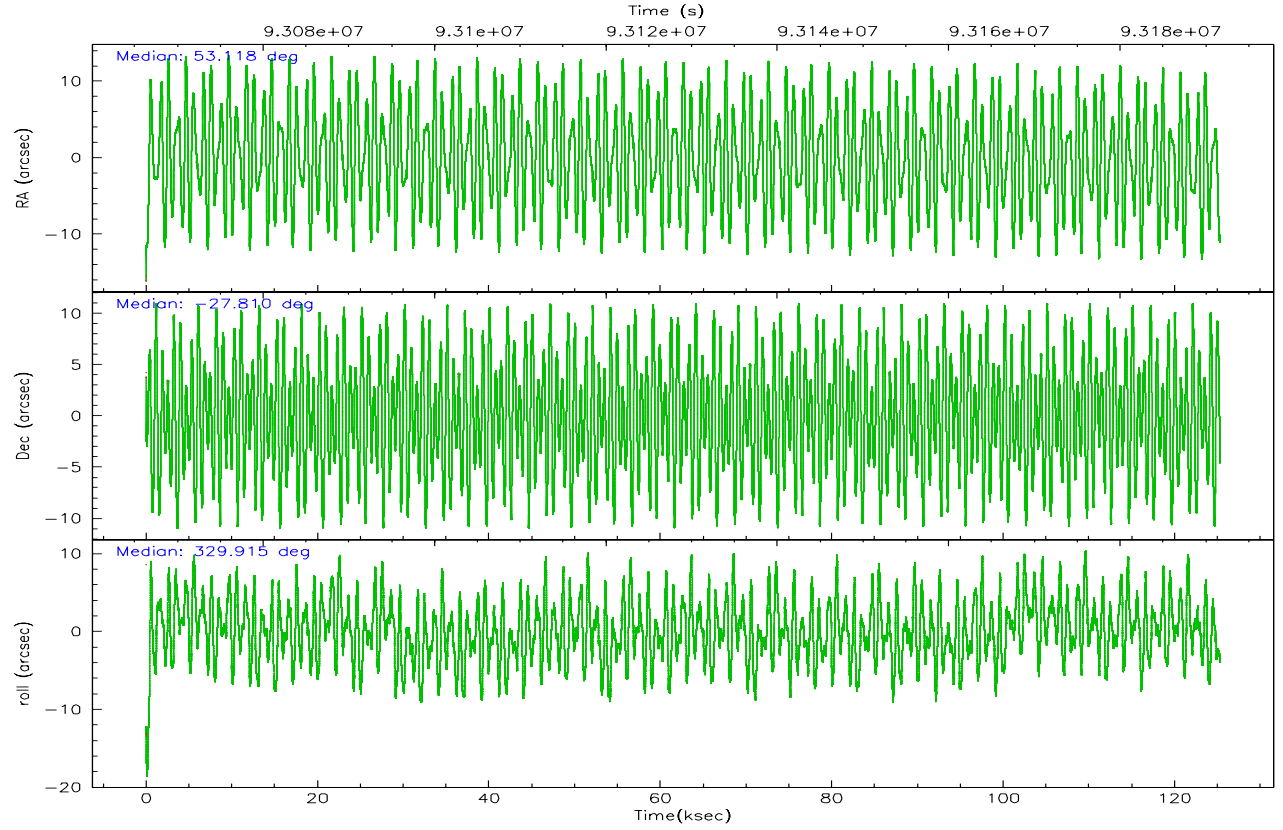
	ccd 0	ccd 1	ccd 2	ccd 3	ccd 6
grade 0 events	35211	36692	35346	37184	35189
	5%	5%	4%	4%	4%
grade 1 events	362	311	325	381	345
	0%	0%	0%	0%	0%
grade 2 events	17908	18141	17566	16723	16452
	2%	2%	2%	2%	2%
grade 3 events	8800	9601	7911	8410	8628
	1%	1%	1%	1%	1%
grade 4 events	8111	9283	7982	8242	8571
	1%	1%	1%	1%	1%
grade 5 events	26847	28574	25365	28900	31203
	3%	4%	3%	3%	4%
grade 6 events	15166	17002	14766	15262	16837
	2%	2%	1%	2%	2%
grade 7 events	580222	580101	652882	644362	646563
	83%	82%	85%	84%	84%

2.2 Compared Parameters

Parameter	Planned	Actual	Parameter	Planned	Actual
Instrument	ACIS	ACIS	Obspar format version number	6	6
Detector	ACIS-01236	ACIS-01236	Obspar file type	PREDICTED	ACTUAL
Grating	NONE	NONE	Obspar update status	NONE	UPDATED
Data mode	FAINT	FAINT	Number of optional ACIS chips dropped	0	0
Observation mode	POINTING	POINTING	On-chip summing requested	N	N
Pointing RA	53.086778	53.11785009443209	Subarray requested	NONE	NONE
Pointing Dec	-27.810170	-27.81024745575264	Alternating exposures requested	N	N
Pointing Roll	329.696373	329.9195528321377	Primary exposure time	0.000000	3.1
SIM focus pos (mm)	-0.782348	-0.7809083437167272			
SIM defocus (mm)	0	0.001439871863259334			
SIM translation stage pos (mm)	-233.592463	-233.5874344608287			
SIM translation stage offset (mm)	0	-0.005018542100998502			
Observation start time	93066514.184000	93065283.60143501			
Observation start date	2000-12-13T03:47:30	2000-12-13T03:28:03			
Observation end time	93191679.184000	93192265.21878999			
Observation end date	2000-12-14T14:33:35	2000-12-14T14:44:25			
Read mode	TIMED	TIMED			

2.3 Aspect



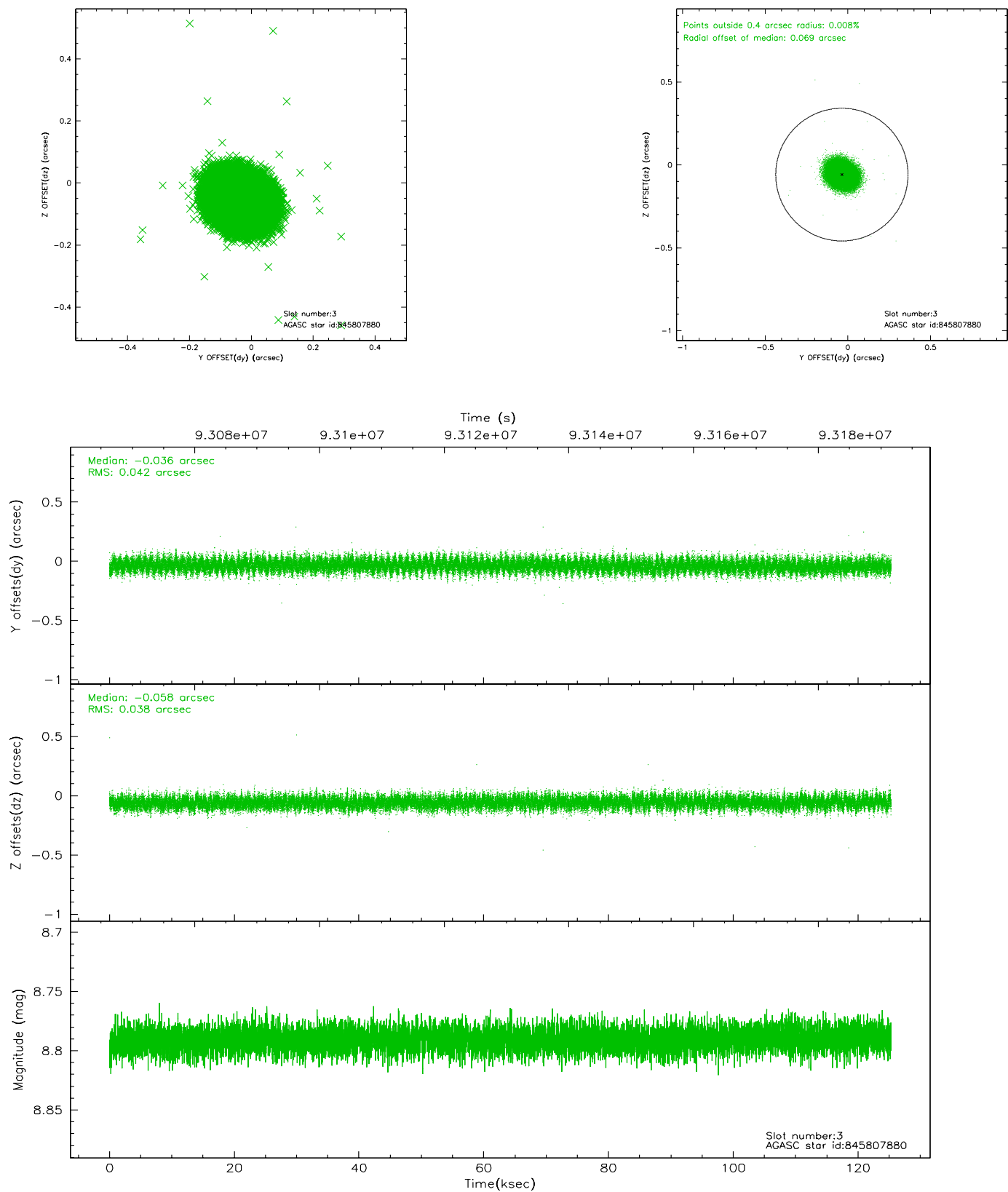


Slot Statistics

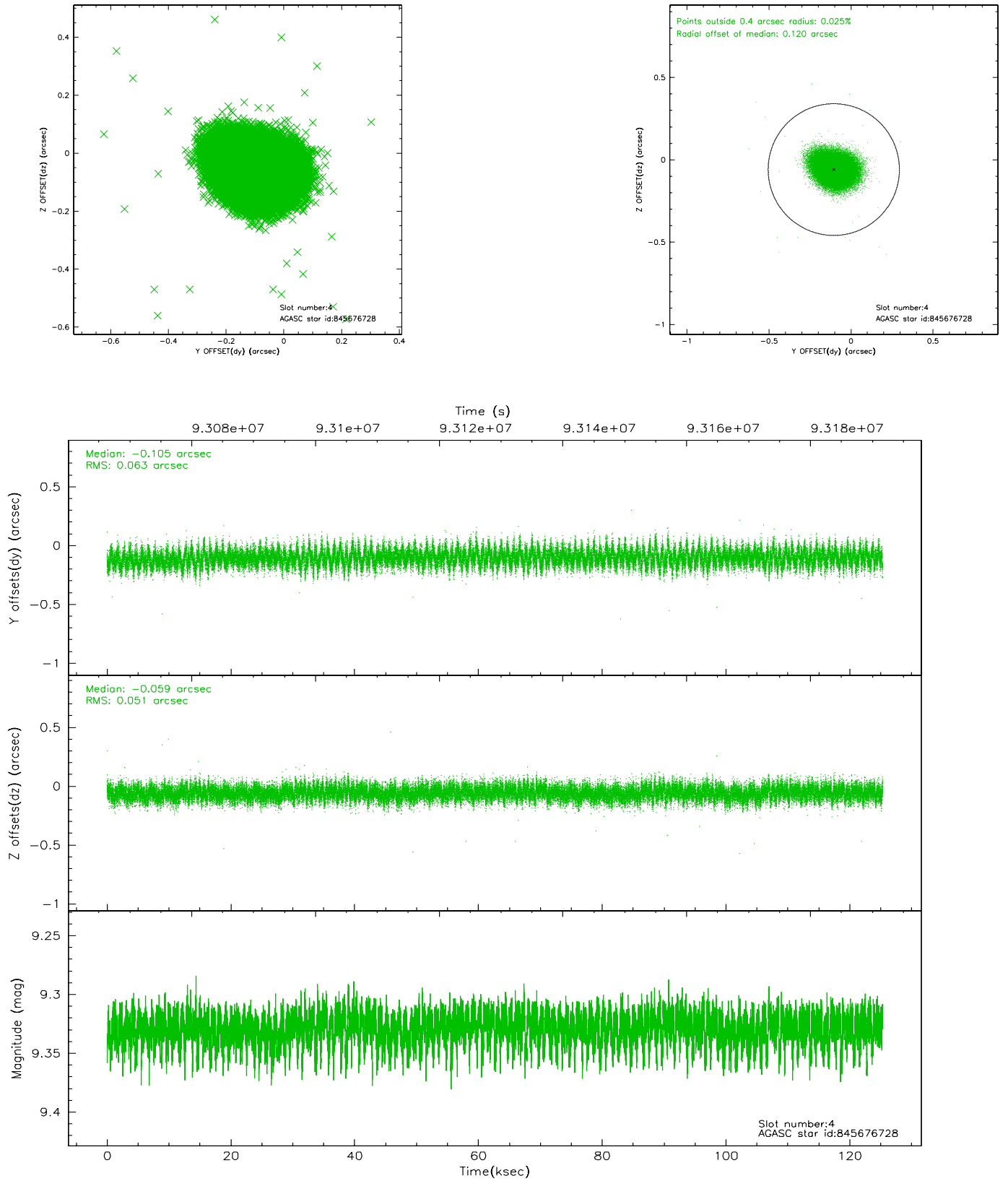
slot	status	id	mag	n_pts	med_dy	med_dz	dr1	dr2	ra	dec	mean_y	mean_z
0	FID	ACIS-I-2	7.15	30567	-0.013	-0.014	0.010	0.023	0.000000	0.000000	-756.74	-835.24
1	FID	ACIS-I-4	7.19	30558	-0.067	0.021	0.008	0.020	0.000000	0.000000	2157.32	1071.02
2	FID	ACIS-I-5	7.23	30564	-0.021	0.062	0.010	0.017	0.000000	0.000000	-1810.70	1068.80
3	GUIDE	845807880	8.79	61117	-0.036	-0.058	0.060	0.097	53.382027	-27.886093	949.67	237.07
4	GUIDE	845676728	9.33	61114	-0.105	-0.059	0.085	0.141	52.877179	-27.664318	-841.60	115.47
5	GUIDE	845676936	9.50	61098	-0.023	-0.030	0.100	0.163	52.843773	-27.880153	-539.94	-608.43
6	GUIDE	845808520	10.22	61070	0.041	0.034	0.137	0.229	53.575292	-27.720766	1183.40	1060.84
7	GUIDE	845808968	9.96	61035	0.126	0.121	0.133	0.222	54.016598	-27.589085	2165.59	2174.77

2.4 Star Slots

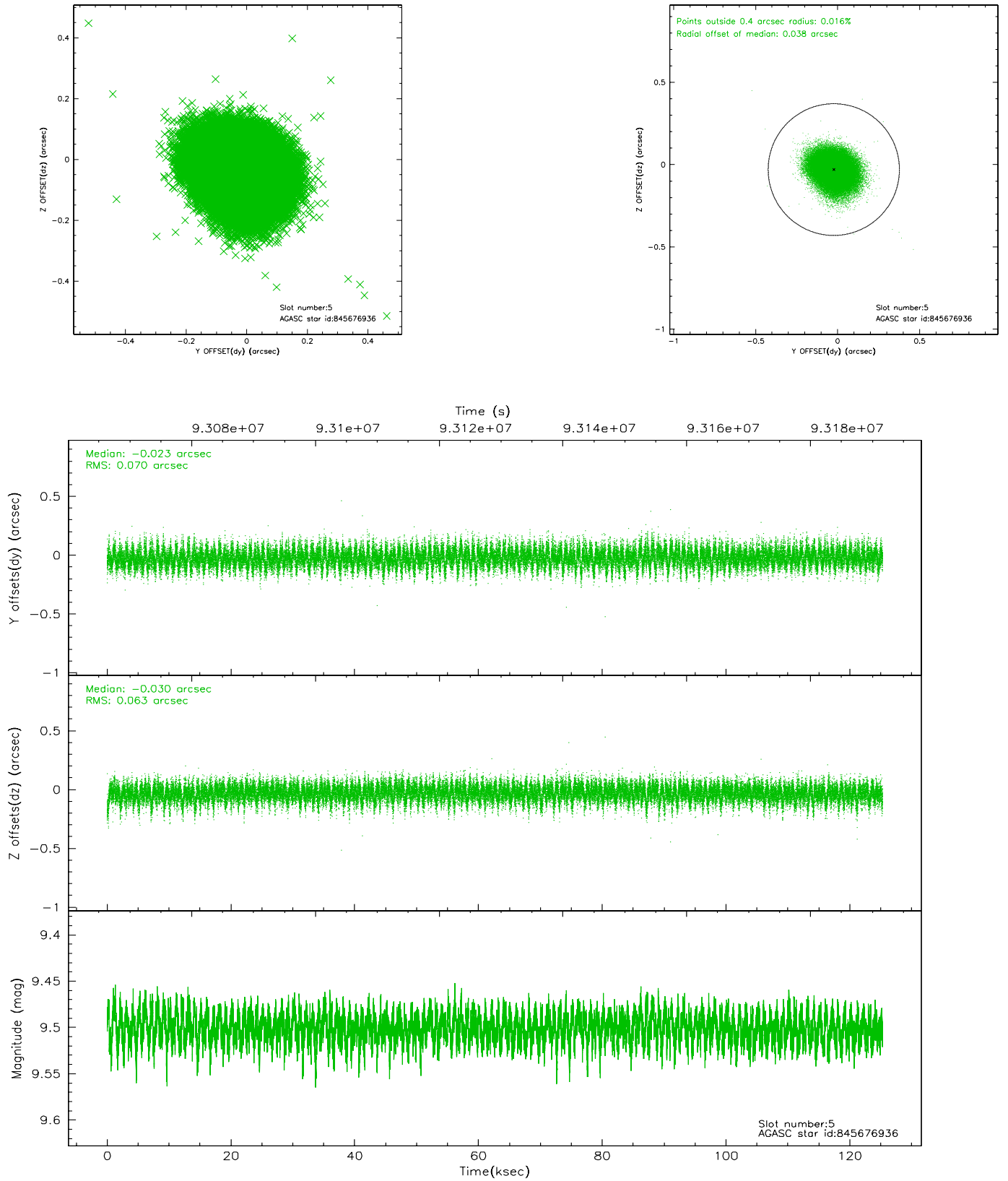
2.4.1 Slot 3



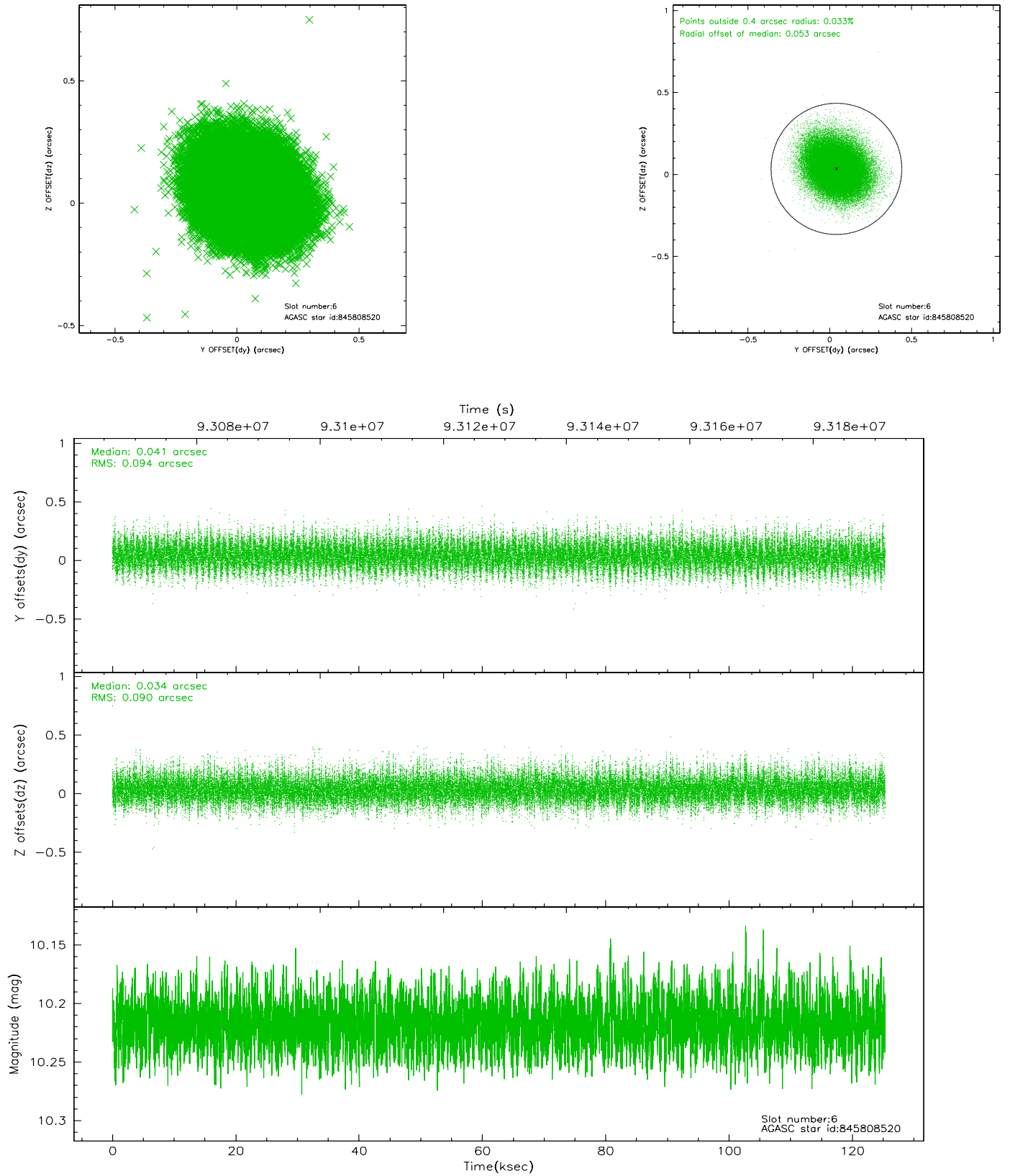
2.4.2 Slot 4



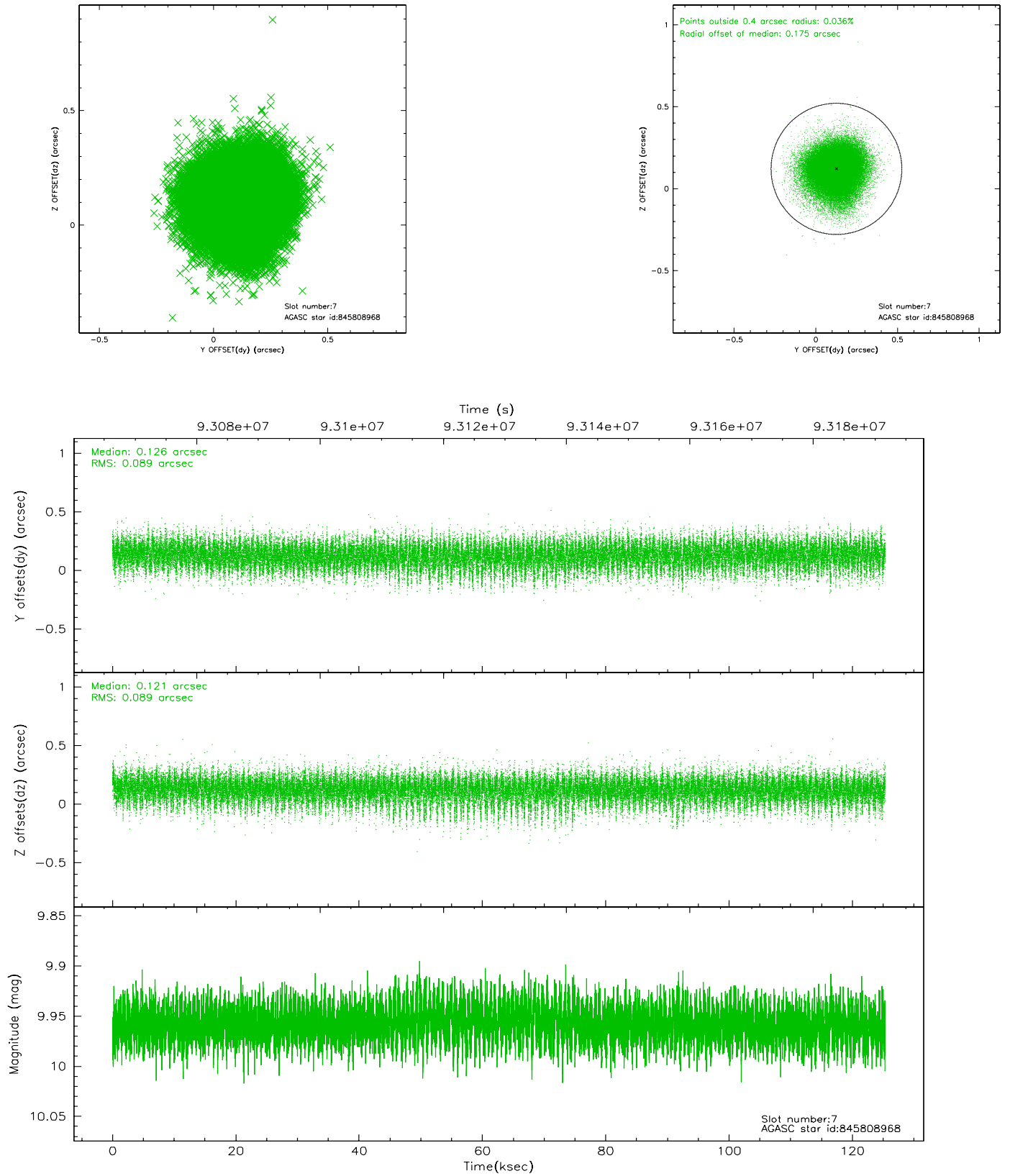
2.4.3 Slot 5



2.4.4 Slot 6

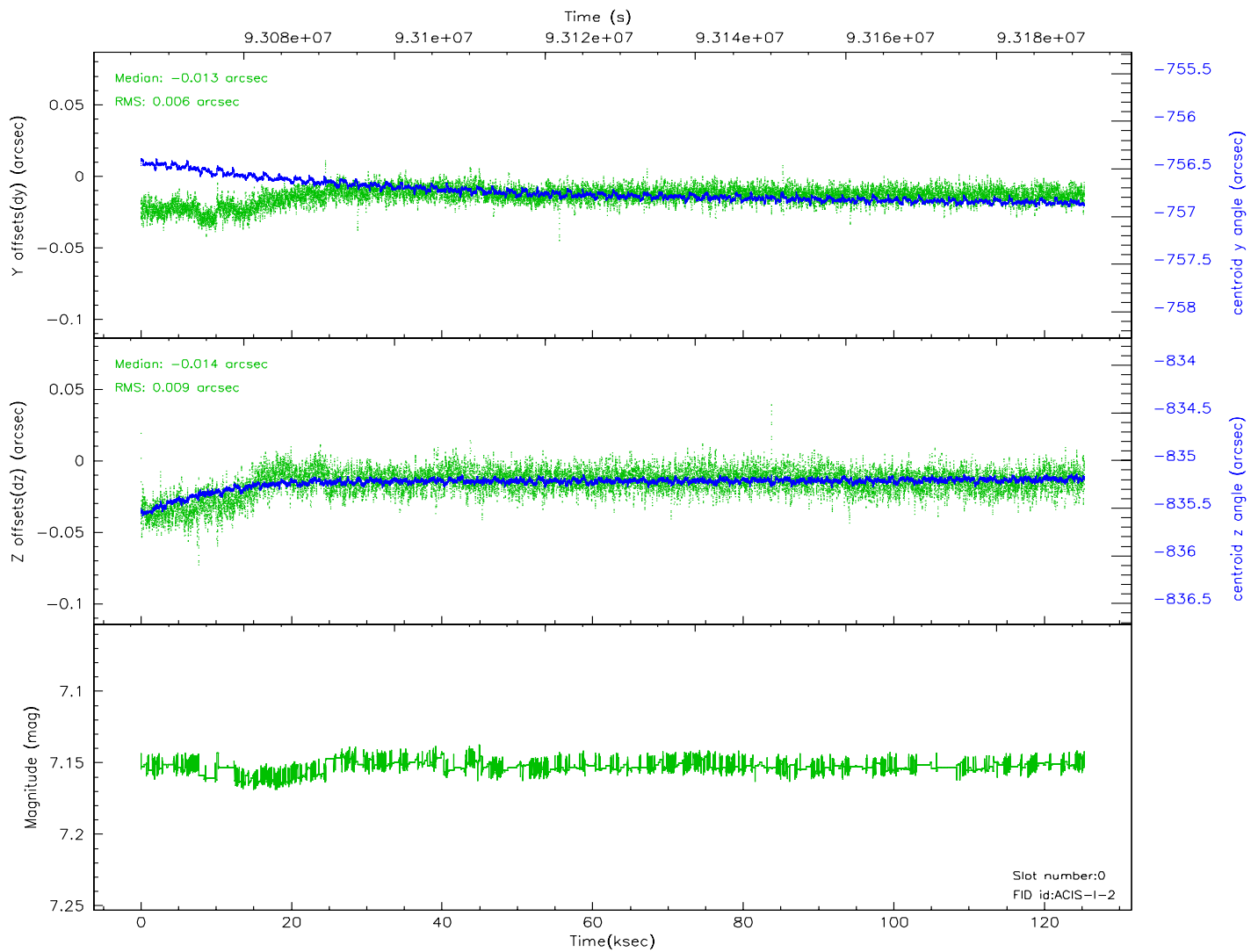
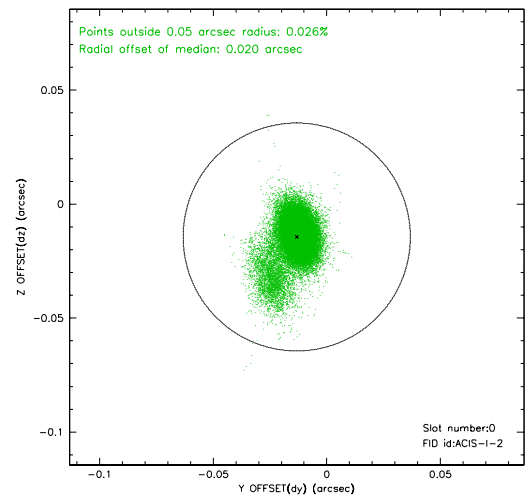
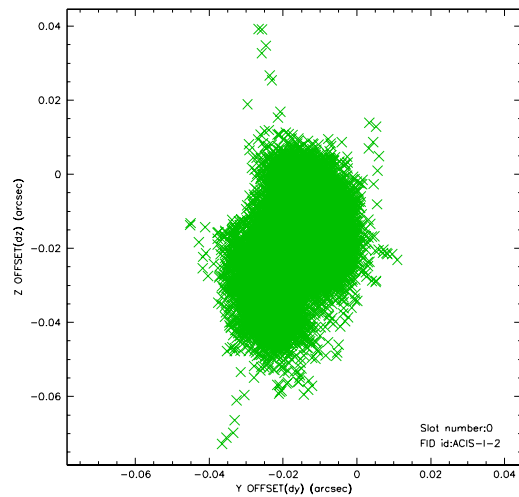


2.4.5 Slot 7

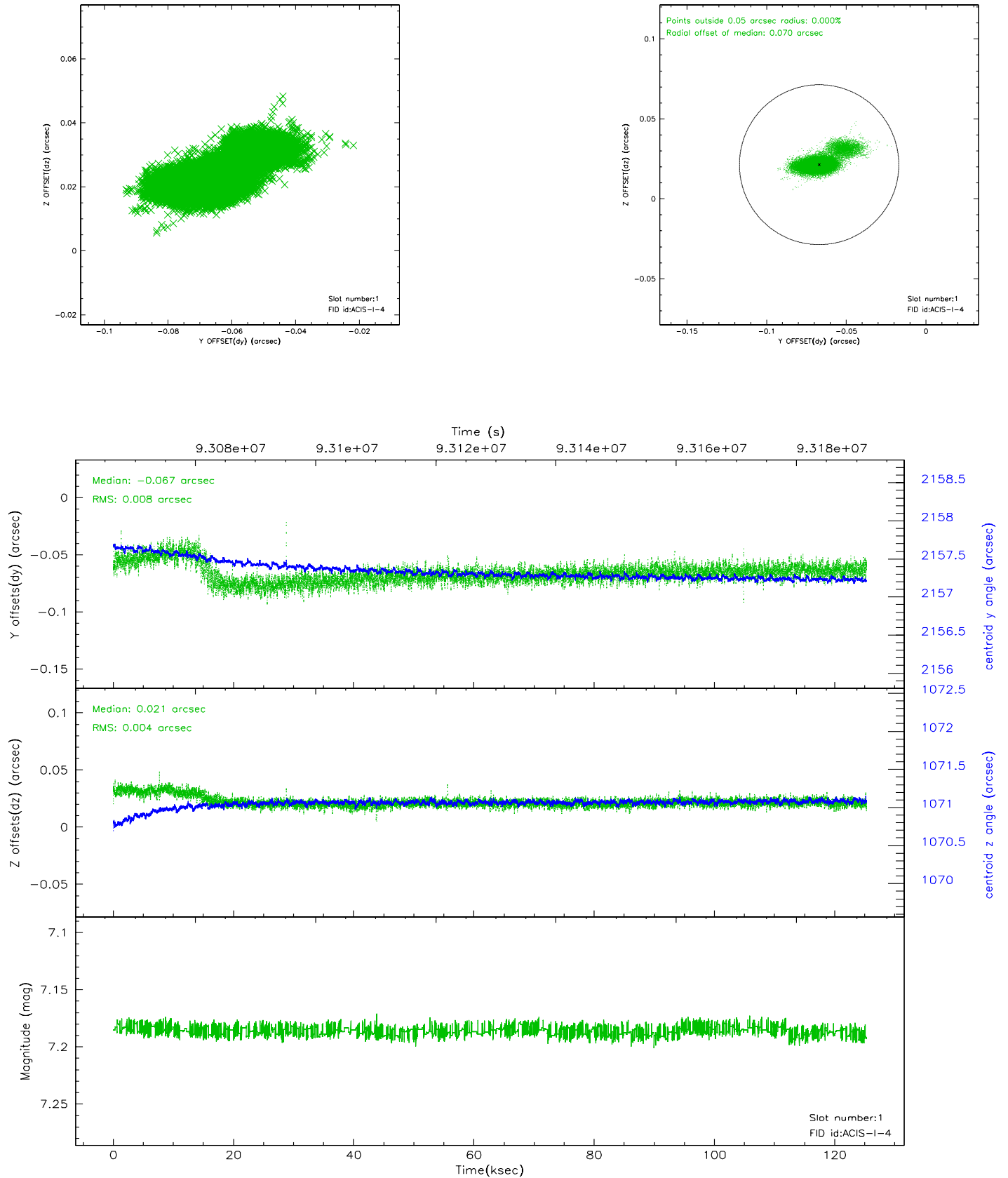


2.5 FID Slots

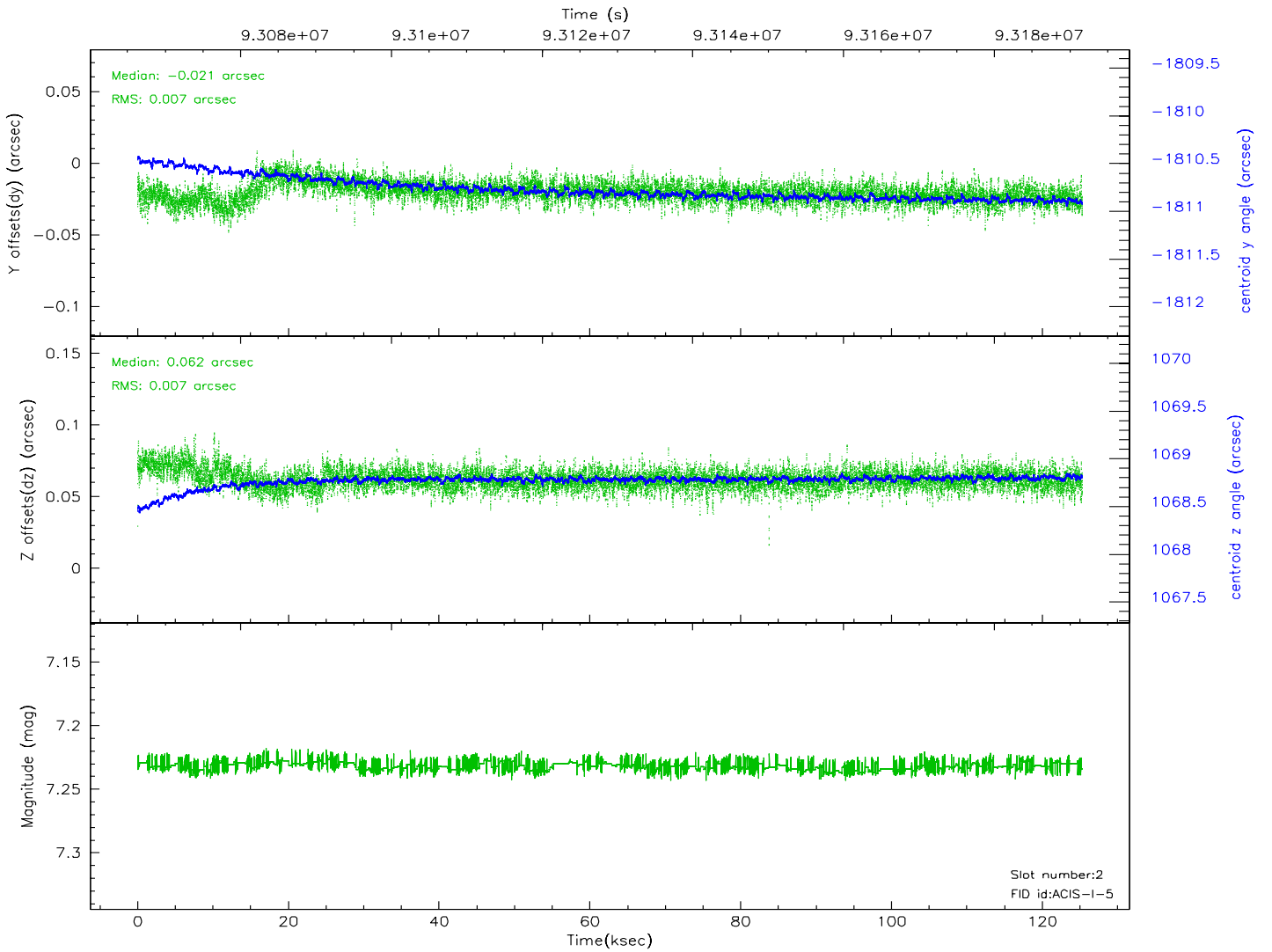
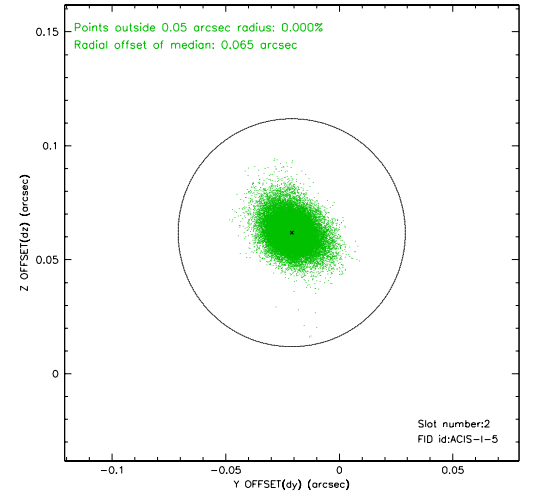
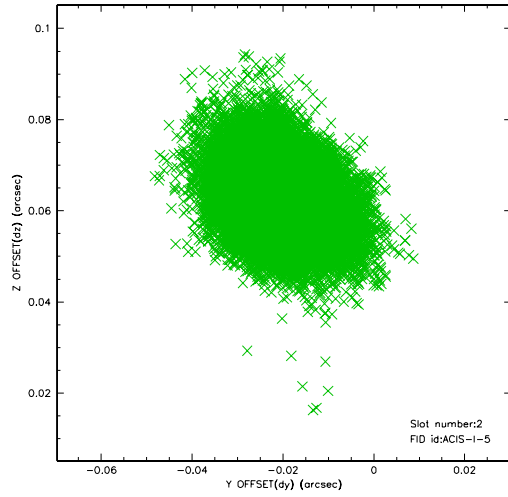
2.5.1 Slot 0



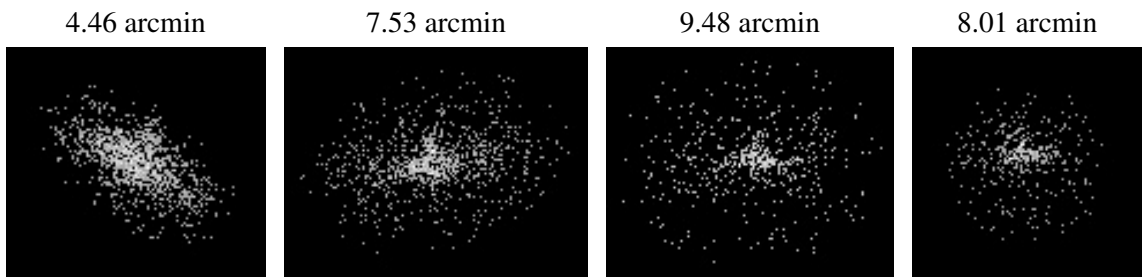
2.5.2 Slot 1



2.5.3 Slot 2



3 Point Sources



A Summary

A.1 Status

V&V Scientist	Beth Sundheim
V&V Date (YYYY-MM-DD)	2007.06.21
V&V Edition	1
V&V Disposition and Status	OK
V&V Charge Time	125.323

A.2 Comments