

V&V Reference Report

L2 ASCDS Version : 7.6.9

Observation 2300 - L2 Version 001
Chandra X-Ray Center

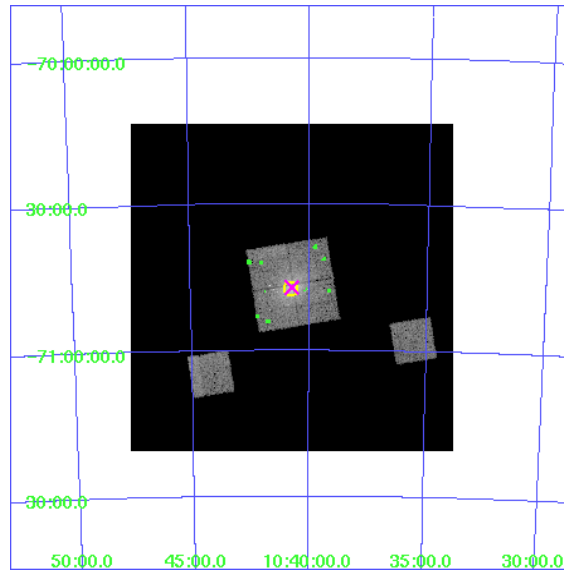
L2 Processing Date : Dec 31 2006

Contents

1	Front	2
2	OBI	3
2.1	OBI	3
2.1.1	Images	3
2.1.2	Bias	3
2.1.3	Parameters	4
2.1.4	Events	4
2.2	Compared Parameters	5
2.3	Aspect	6
2.4	Star Slots	9
2.4.1	Slot 3	9
2.4.2	Slot 4	10
2.4.3	Slot 5	11
2.4.4	Slot 6	12
2.4.5	Slot 7	13
2.5	FID Slots	14
2.5.1	Slot 0	14
2.5.2	Slot 1	15
2.5.3	Slot 2	16
3	Point Sources	17
A	Summary	18
A.1	Status	18
A.2	Comments	18

1 Front

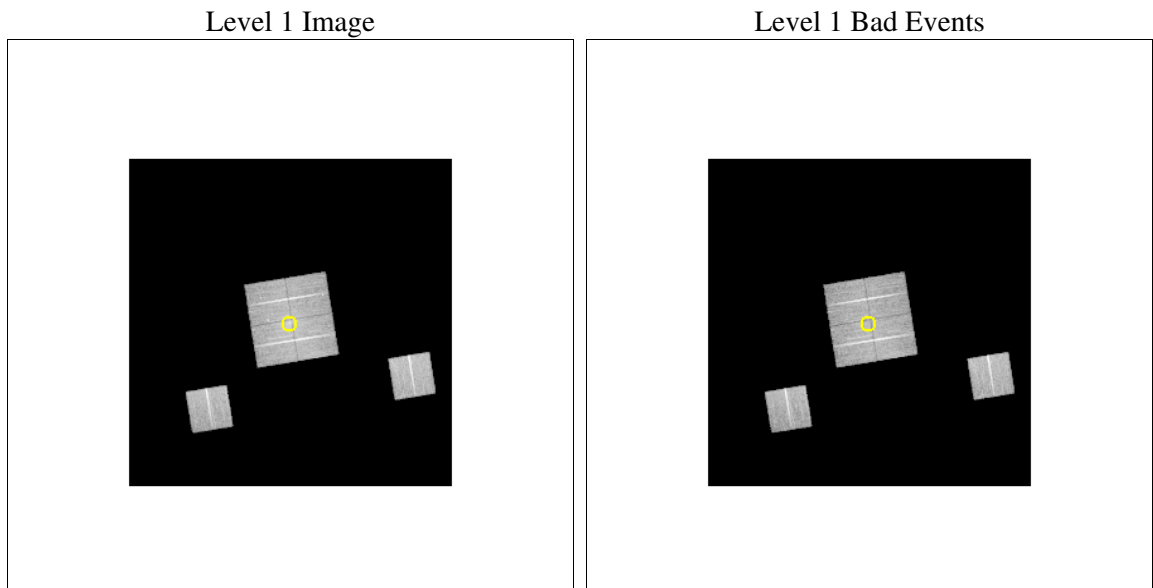
seq_num	900127
obs_id	2300
title	A SURVEY OF X-RAY SELECTED SNR CANDIDATES
observer	Dr. Martin Weisskopf
object	1RXSJ104047.4-704713
dtcycle	0
cycle	P
ra_targ	160.195833
dec_targ	-70.786944
ra_nom	160.1837099033
dec_nom	-70.784407163365
roll_nom	170.80931304006
revision	2
ontime	12966.359151497
livetime	12802.171304517
ontime0	12966.359031901
ontime1	12966.359181419
ontime2	12969.600012079
ontime3	12966.359151497
ontime4	12969.600012079
ontime9	12969.600012079
l2events	46973



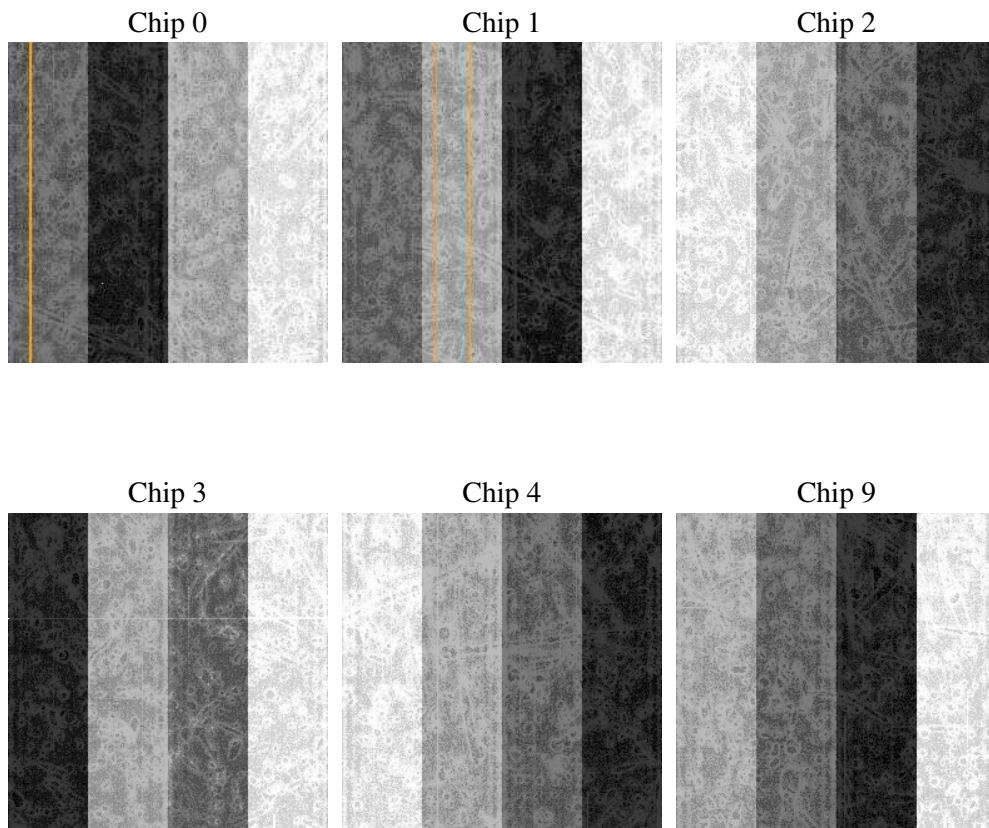
2 OBI

2.1 OBI

2.1.1 Images



2.1.2 Bias



2.1.3 Parameters

obi_num	0
ascdsver	7.6.9
caldbver	3.2.4
date	2006-12-31T07:39:46
revision	2

sched_exp_time	12800.000000
ontime	12970.475962415
ontime0	12970.475872725
ontime1	12970.476022243
ontime2	12973.716822997
ontime3	12970.475962415
ontime4	12973.716852903
ontime9	12973.716822997
l1events	459630

2.1.4 Events

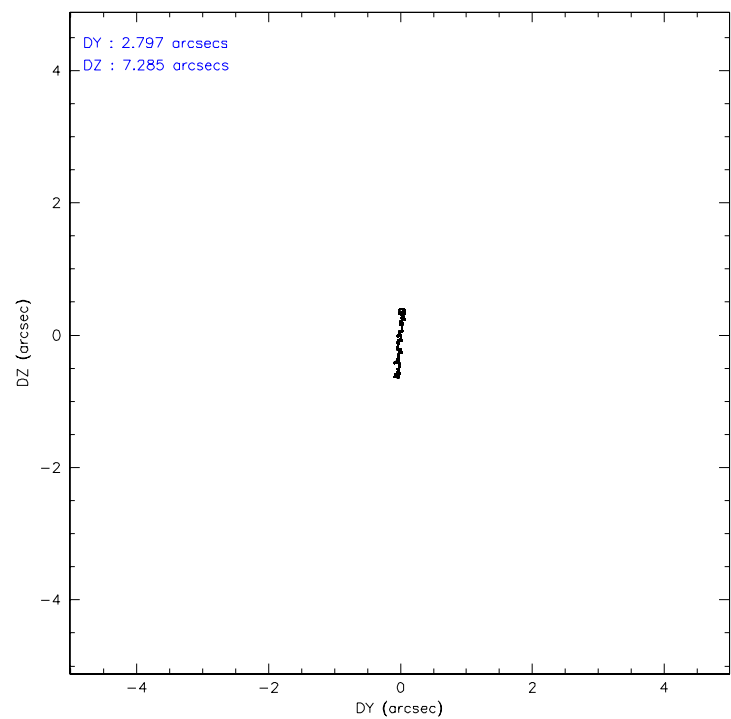
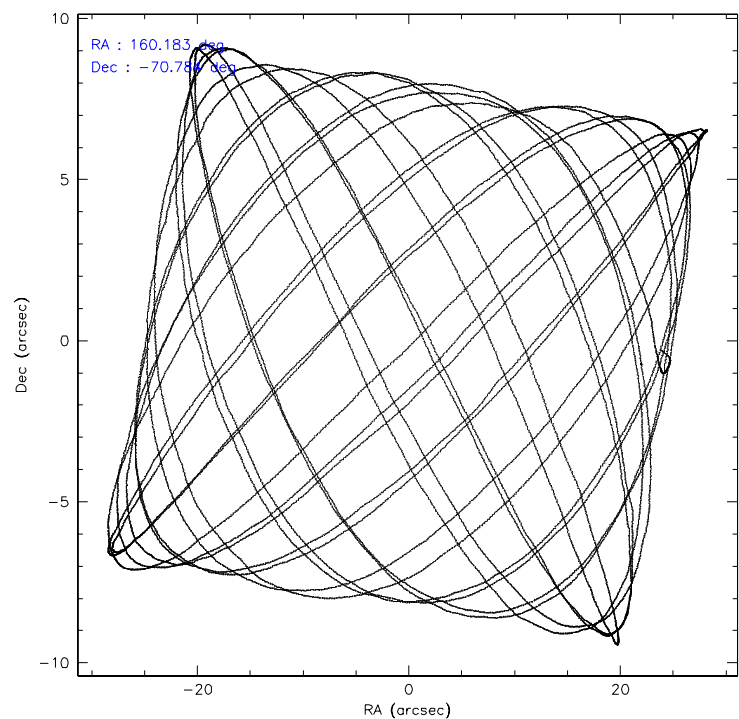
	ccd 0	ccd 1	ccd 2	ccd 3	ccd 4	ccd 9
level 1 events	68168	71321	80013	79601	86642	73885
rejected events	58817	61427	69971	68335	79212	66376
rejected %	86%	86%	87%	85%	91%	89%

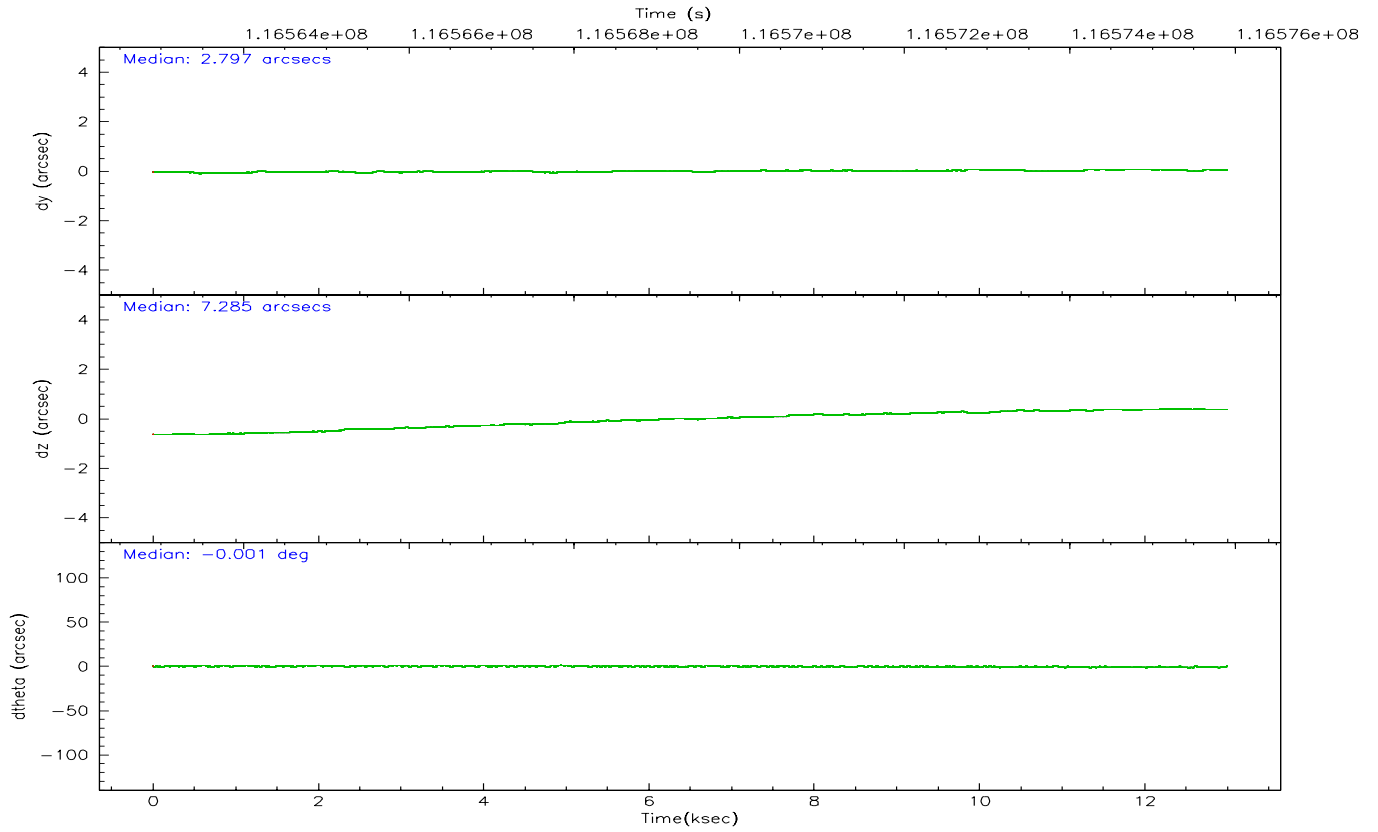
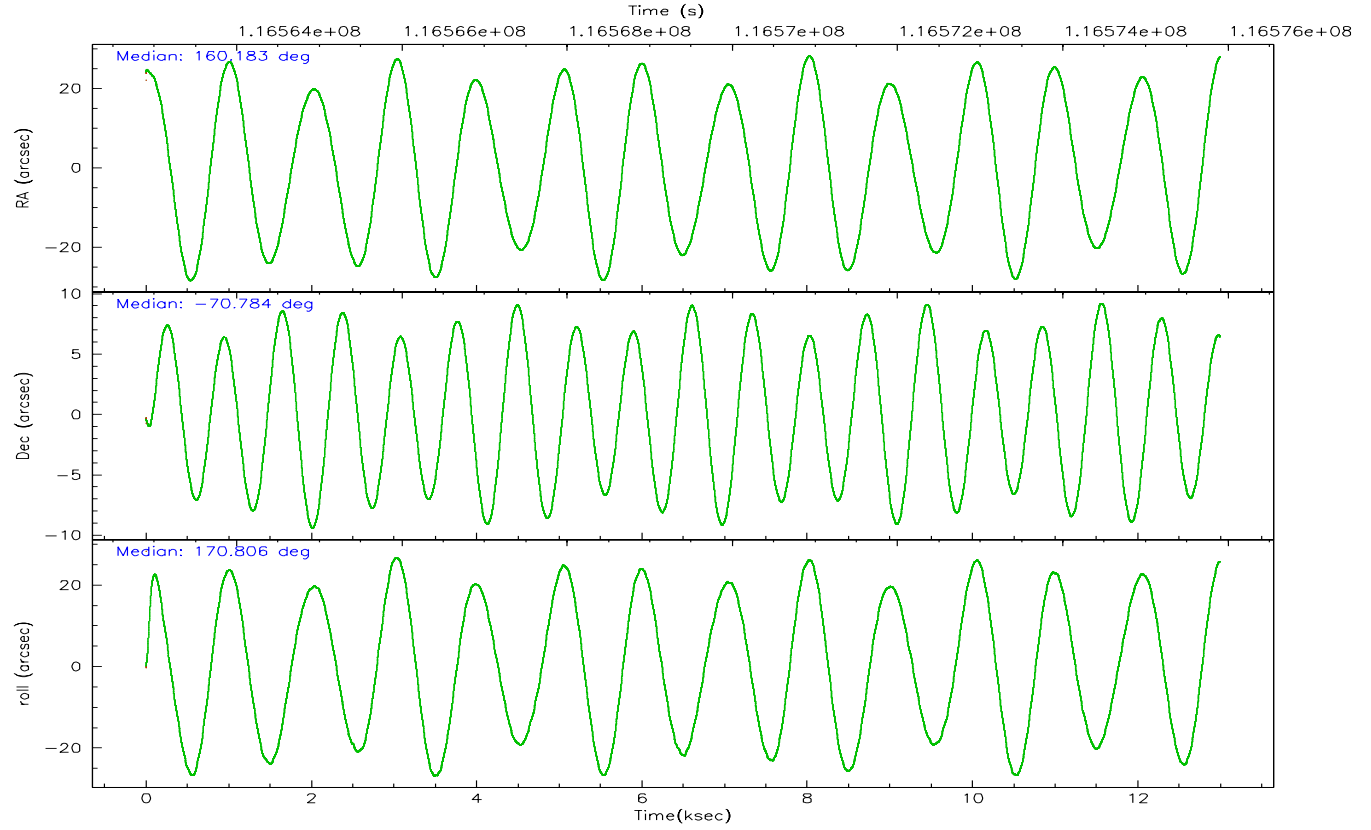
	ccd 0	ccd 1	ccd 2	ccd 3	ccd 4	ccd 9
grade 0 events	4575	4624	5220	6314	2798	2815
	6%	6%	6%	7%	3%	3%
grade 1 events	35	48	50	44	34	20
	0%	0%	0%	0%	0%	0%
grade 2 events	1785	1793	1840	1850	1732	1505
	2%	2%	2%	2%	1%	2%
grade 3 events	795	931	812	855	779	875
	1%	1%	1%	1%	0%	1%
grade 4 events	810	930	852	876	761	823
	1%	1%	1%	1%	0%	1%
grade 5 events	2285	2435	2080	2461	2257	2822
	3%	3%	2%	3%	2%	3%
grade 6 events	1388	1619	1319	1374	1361	1491
	2%	2%	1%	1%	1%	2%
grade 7 events	56495	58941	67840	65827	76920	63534
	82%	82%	84%	82%	88%	85%

2.2 Compared Parameters

Parameter	Planned	Actual	Parameter	Planned	Actual
Instrument	ACIS	ACIS	Obspar format version number	6	6
Detector	ACIS-012349	ACIS-012349	Obspar file type	PREDICTED	ACTUAL
Grating	NONE	NONE	Obspar update status	NONE	UPDATED
Data mode	VFAINT	VFAINT	Number of optional ACIS chips dropped	0	0
Observation mode	POINTING	POINTING	On-chip summing requested	N	N
Pointing RA	160.261517	160.1837099032954	Subarray requested	NONE	NONE
Pointing Dec	-70.774629	-70.78440716336451	Alternating exposures requested	N	N
Pointing Roll	170.674114	170.8093130400597	Primary exposure time	0.000000	3.2
SIM focus pos (mm)	-0.782348	-0.7809083437167272			
SIM defocus (mm)	0	0.001439871863259334			
SIM translation stage pos (mm)	-233.592463	-233.5874344608287			
SIM translation stage offset (mm)	0	-0.005018542100998502			
Observation start time	116563102.184000	116562034.47663			
Observation start date	2001-09-11T02:37:18	2001-09-11T02:20:34			
Observation end time	116575902.184000	116576705.8147			
Observation end date	2001-09-11T06:10:38	2001-09-11T06:25:05			
Read mode	TIMED	TIMED			

2.3 Aspect



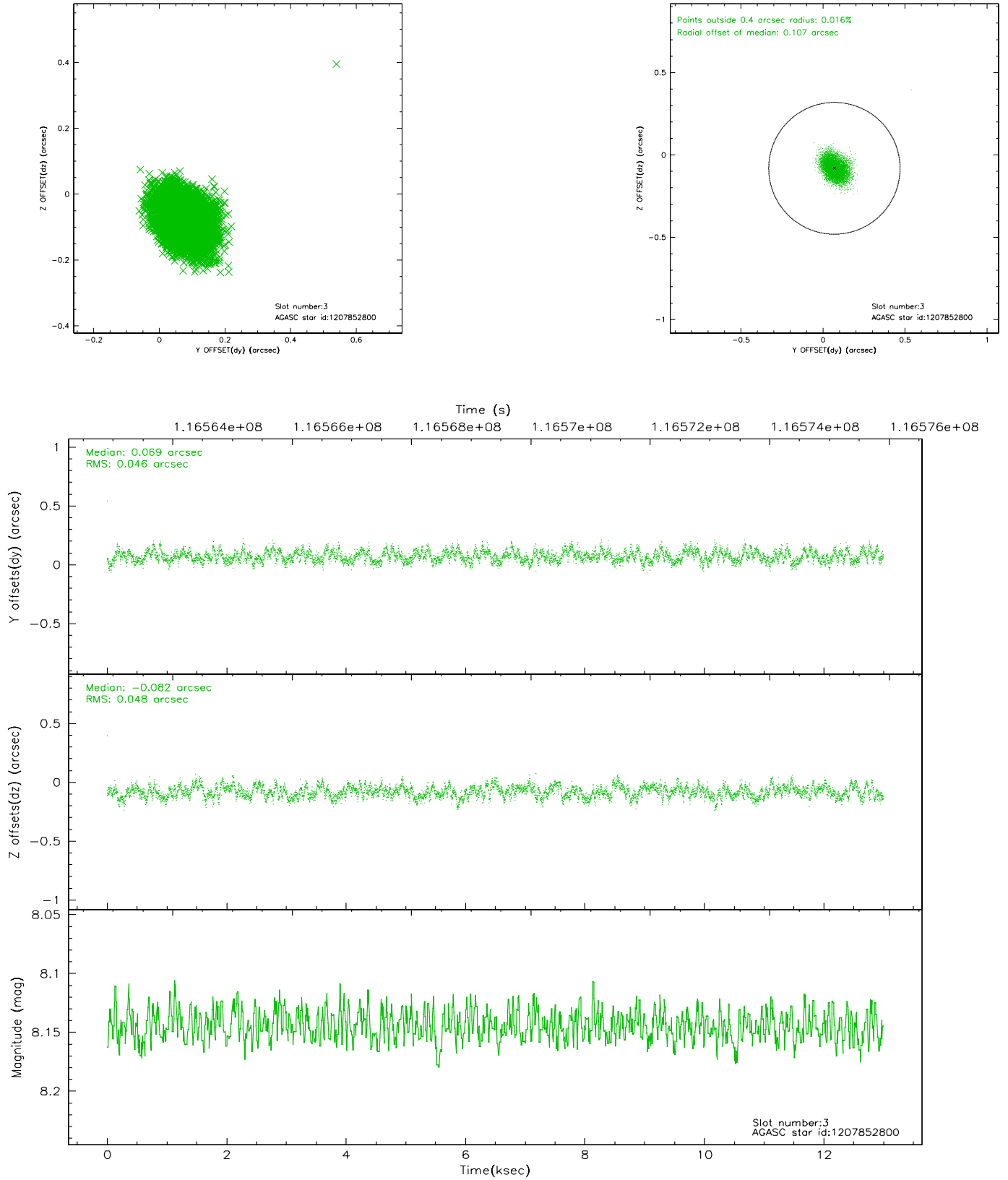


Slot Statistics

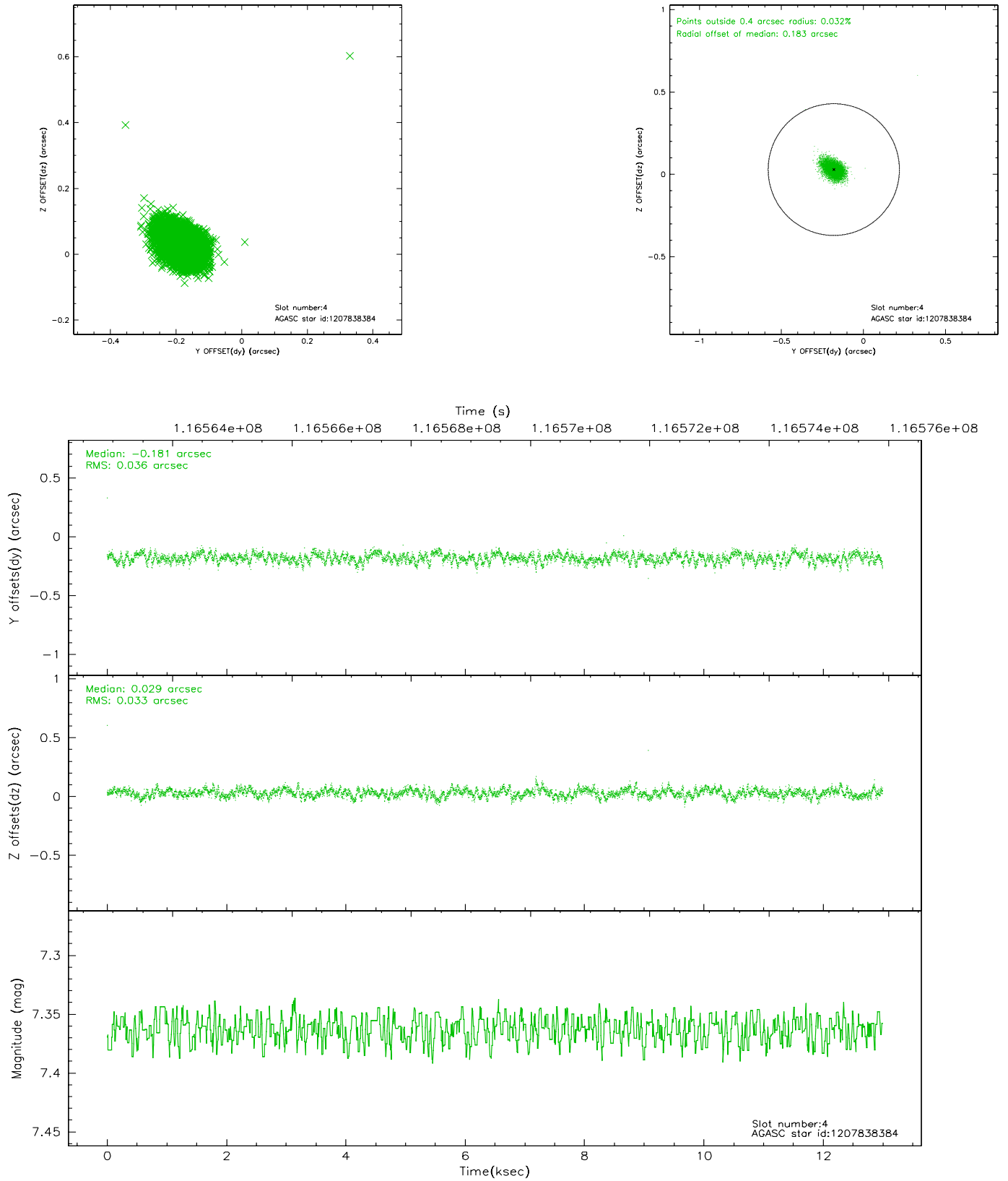
slot	status	id	mag	n_pts	med_dy	med_dz	dr1	dr2	ra	dec	mean_y	mean_z
0	FID	ACIS-I-1	7.25	3171	-0.022	0.058	0.013	0.020	0.000000	0.000000	936.96	-830.59
1	FID	ACIS-I-5	7.24	3171	-0.014	0.047	0.006	0.010	0.000000	0.000000	-1810.89	1066.75
2	FID	ACIS-I-6	7.26	3171	-0.055	-0.036	0.013	0.021	0.000000	0.000000	402.12	1711.56
3	GUIDE	1207852800	8.15	6339	0.069	-0.082	0.071	0.111	159.627916	-70.309822	1028.11	-1522.43
4	GUIDE	1207838384	7.36	6342	-0.181	0.029	0.050	0.084	158.645286	-70.352857	2171.18	-1155.46
5	GUIDE	1207829392	8.62	6340	0.121	0.082	0.065	0.108	158.785085	-70.613698	1830.75	-264.35
6	GUIDE	1207966152	8.71	6342	-0.074	-0.008	0.064	0.101	162.252920	-70.617188	-2262.58	-906.15
7	GUIDE	1207964520	8.92	6341	0.064	-0.019	0.071	0.114	162.086587	-71.109056	-2300.41	875.03

2.4 Star Slots

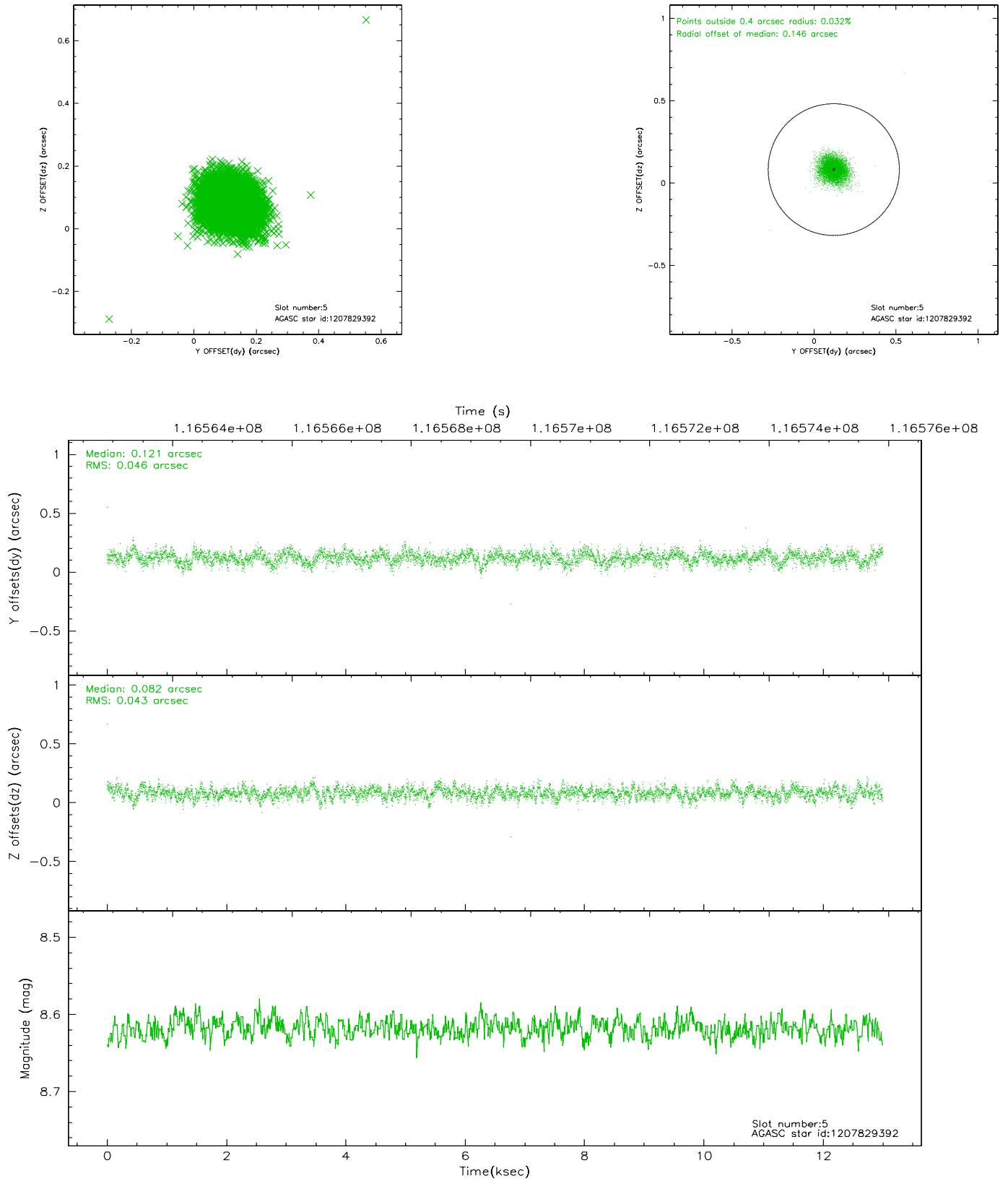
2.4.1 Slot 3



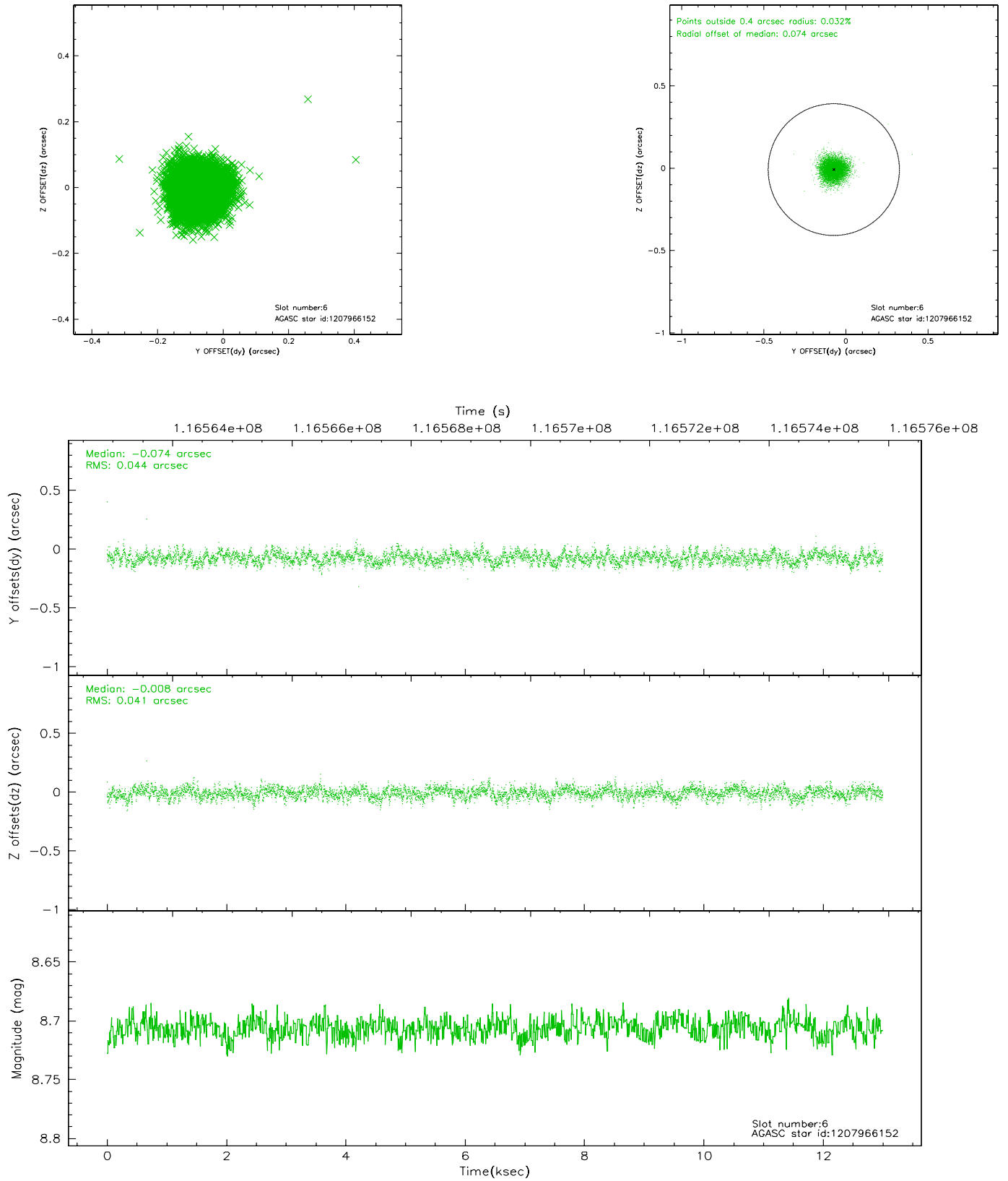
2.4.2 Slot 4



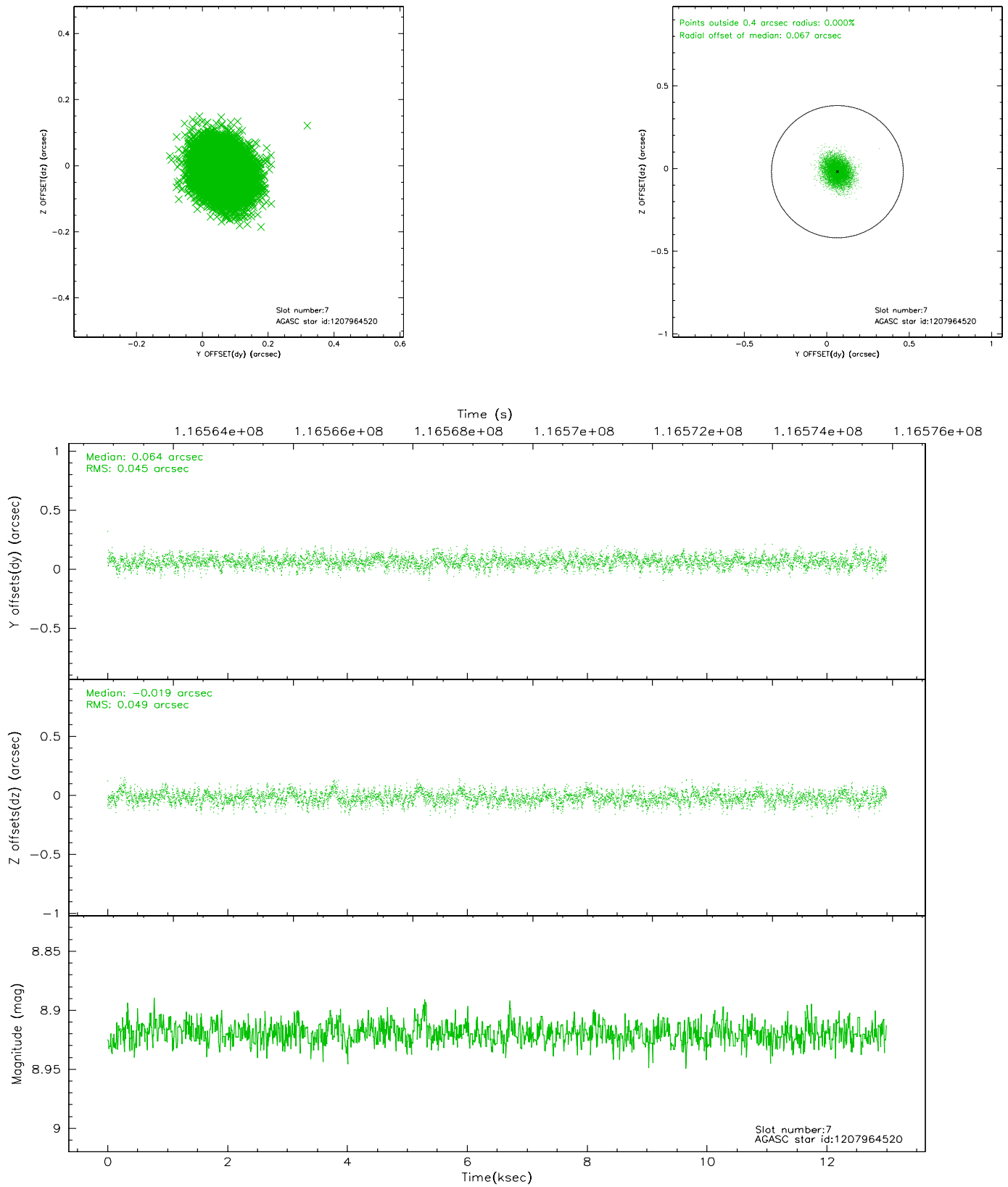
2.4.3 Slot 5



2.4.4 Slot 6

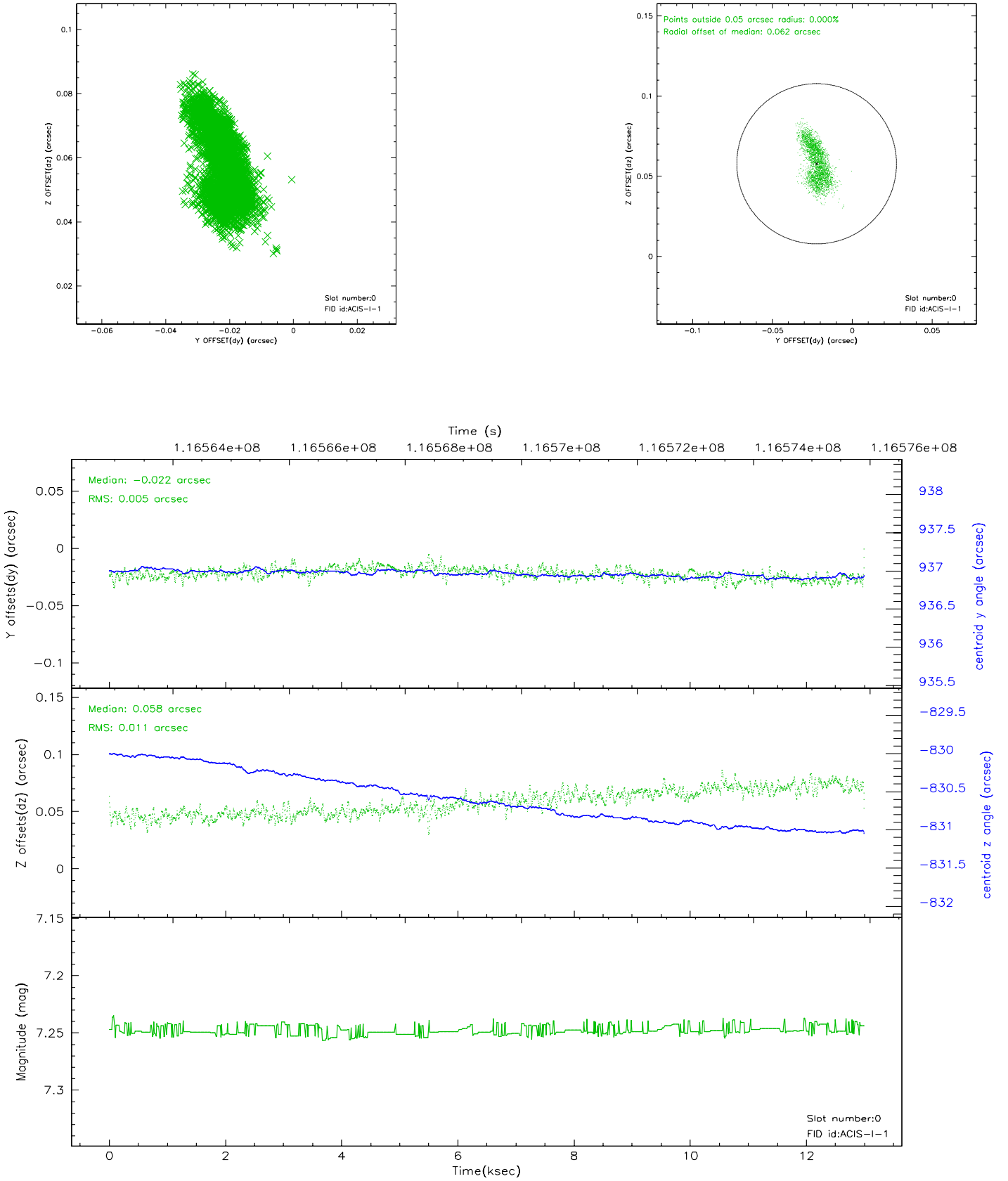


2.4.5 Slot 7

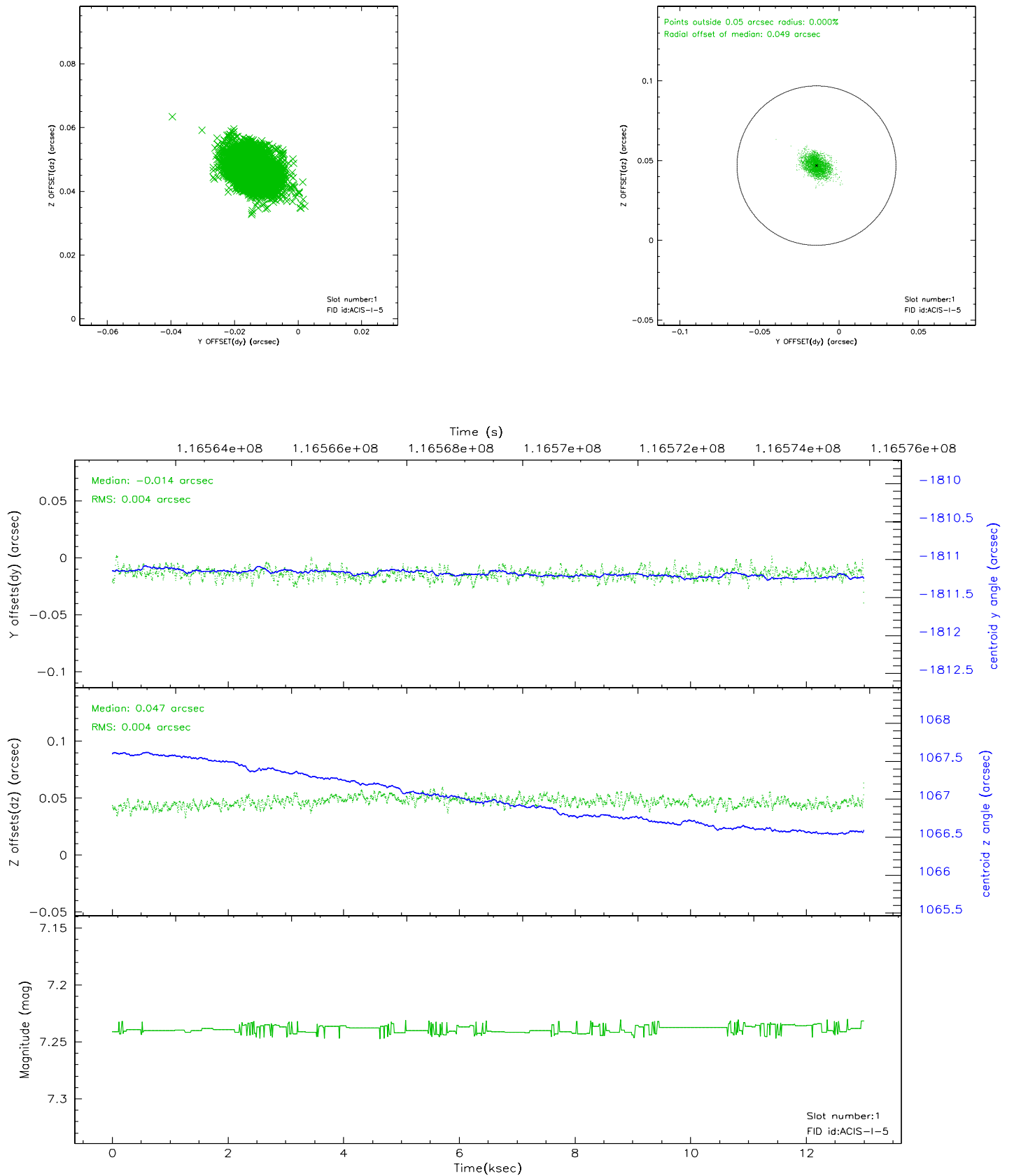


2.5 FID Slots

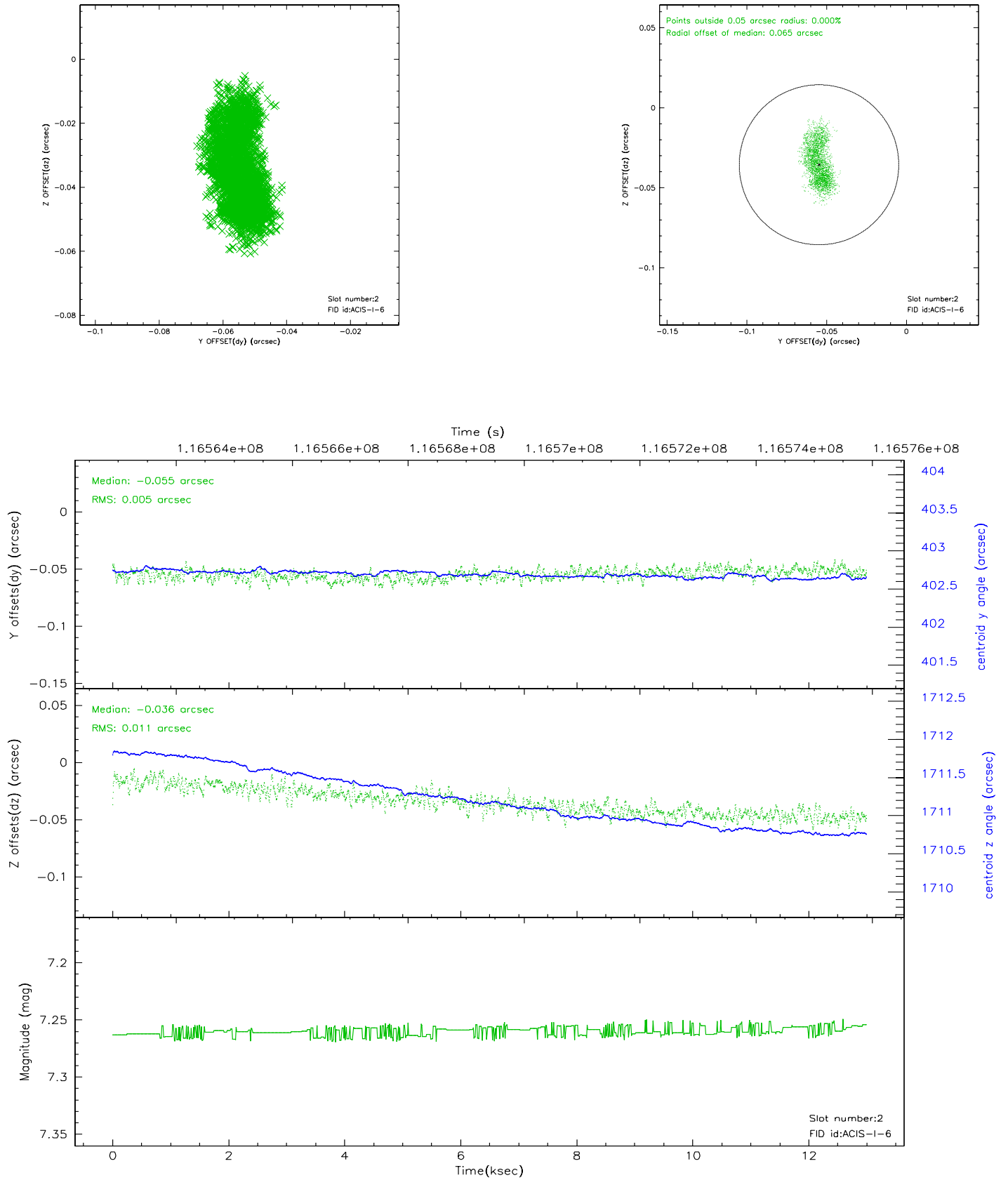
2.5.1 Slot 0



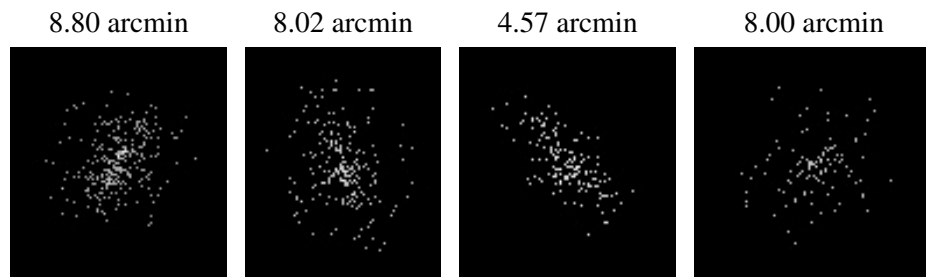
2.5.2 Slot 1



2.5.3 Slot 2



3 Point Sources



A Summary

A.1 Status

V&V Scientist	Beth Sundheim
V&V Date (YYYY-MM-DD)	2007.01.04
V&V Edition	1
V&V Disposition and Status	OK
V&V Charge Time	12.966

A.2 Comments

Focal plane temperature is warmer than -118.7 C degrees during the first ~1 ksec of this observation. The ACIS spectral response calibration for the front-illuminated chips is less accurate at these warmer temperatures than it is at -119.7 C.