

# V&V Reference Report

## L2 ASCDS Version : 7.6.9

Observation 2298 - L2 Version 001  
Chandra X-Ray Center

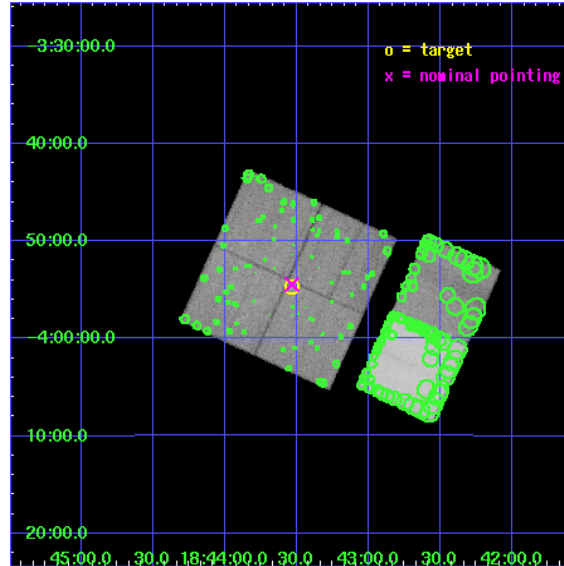
L2 Processing Date : Nov 21 2006

## Contents

<b>1</b>	<b>Front</b>	<b>2</b>
<b>2</b>	<b>OBI</b>	<b>3</b>
2.1	OBI . . . . .	3
2.1.1	Images . . . . .	3
2.1.2	Bias . . . . .	3
2.1.3	Parameters . . . . .	4
2.1.4	Events . . . . .	4
2.2	Compared Parameters . . . . .	5
2.3	Aspect . . . . .	6
2.4	Star Slots . . . . .	9
2.4.1	Slot 3 . . . . .	9
2.4.2	Slot 4 . . . . .	10
2.4.3	Slot 5 . . . . .	11
2.4.4	Slot 6 . . . . .	12
2.4.5	Slot 7 . . . . .	13
2.5	FID Slots . . . . .	14
2.5.1	Slot 0 . . . . .	14
2.5.2	Slot 1 . . . . .	15
2.5.3	Slot 2 . . . . .	16
<b>3</b>	<b>Point Sources</b>	<b>17</b>
<b>A</b>	<b>Summary</b>	<b>18</b>
A.1	Status . . . . .	18
A.2	Comments . . . . .	18

# 1 Front

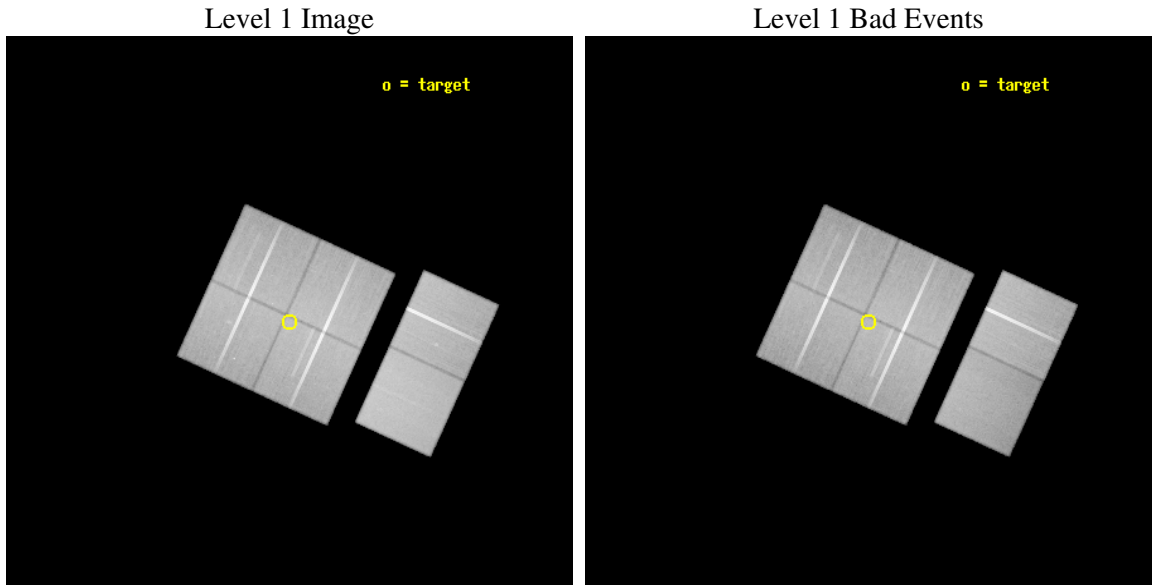
seq_num	900125
obs_id	2298
title	ORIGIN OF THE DIMMEST X-RAY SOURCES ON THE GALACTIC PLANE AND GALACTIC DIFFUSE EMISSION
observer	Prof Ken Ebisawa
object	GALACTIC PLANE 1
dtcycle	0
cycle	P
ra_targ	280.88375
dec_targ	-3.912444
ra_nom	280.88361480207
dec_nom	-3.9076856070263
roll_nom	114.60846632953
revision	2
ontime	99932.759122819
livetime	98667.350354522
ontime0	99935.947573185
ontime1	99932.747662872
ontime2	99929.518152595
ontime3	99932.759122819
ontime6	99936.000093073
ontime7	99932.759122834
l2events	746783



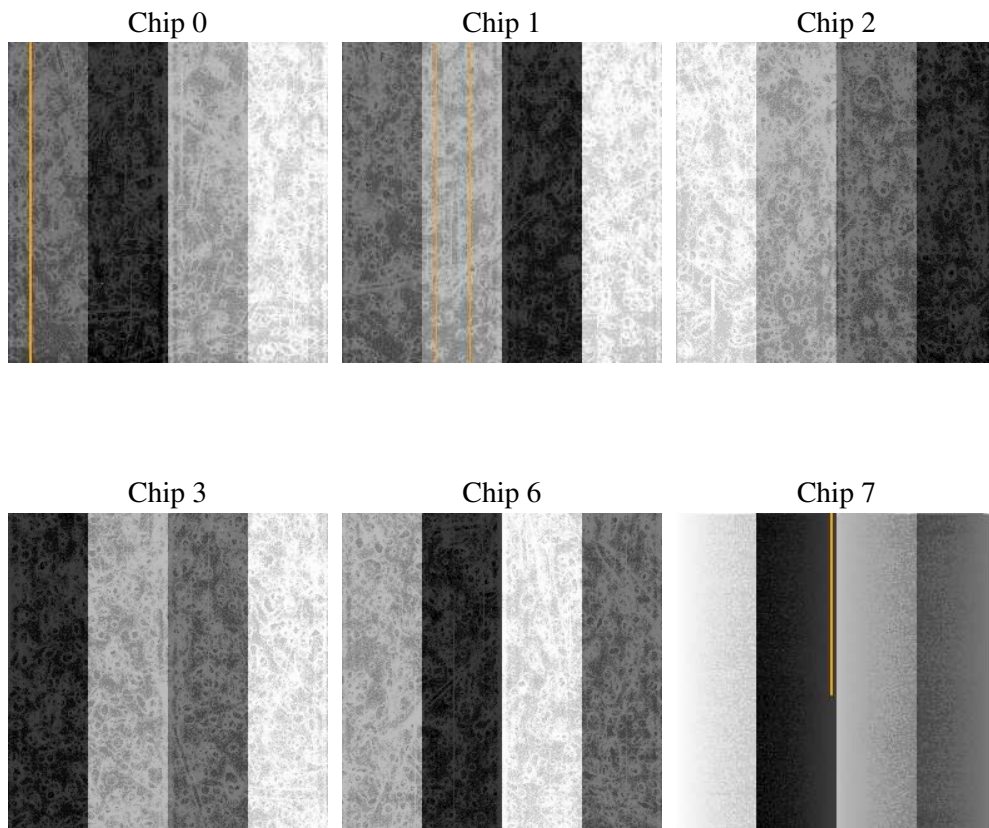
## 2 OBI

### 2.1 OBI

#### 2.1.1 Images



#### 2.1.2 Bias



### 2.1.3 Parameters

obi_num	0
ascdsver	7.6.9
caldsver	3.2.4
date	2006-11-21T23:11:38
revision	2

sched_exp_time	100000.000000
ontime	99936.318707541
ontime0	99939.559677795
ontime1	99936.318727478
ontime2	99933.077737316
ontime3	99936.318707541
ontime6	99939.559677795
ontime7	99936.318707556
l1events	4678429

### 2.1.4 Events

	ccd 0	ccd 1	ccd 2	ccd 3	ccd 6	ccd 7
level 1 events	713784	726391	789761	769075	802053	877365
rejected events	616877	622629	701169	678439	710671	525569
rejected %	86%	85%	88%	88%	88%	59%

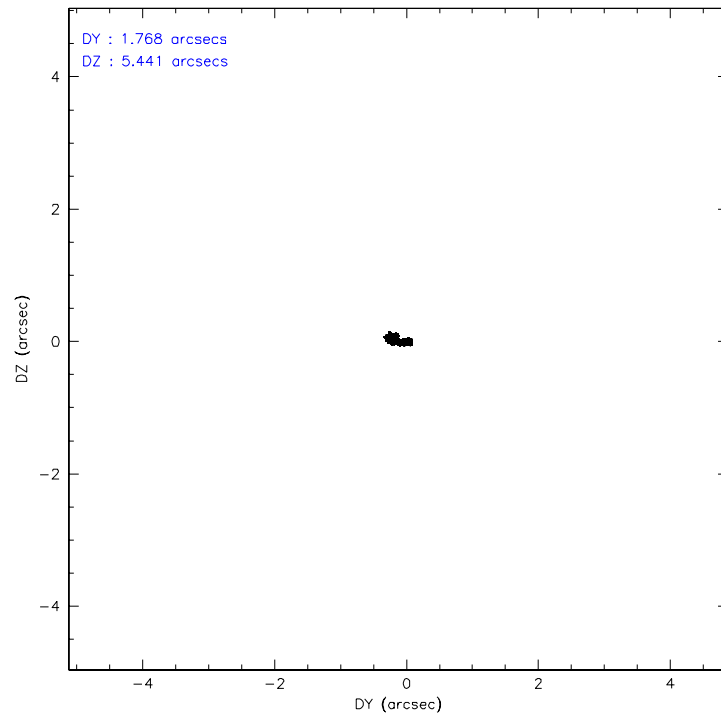
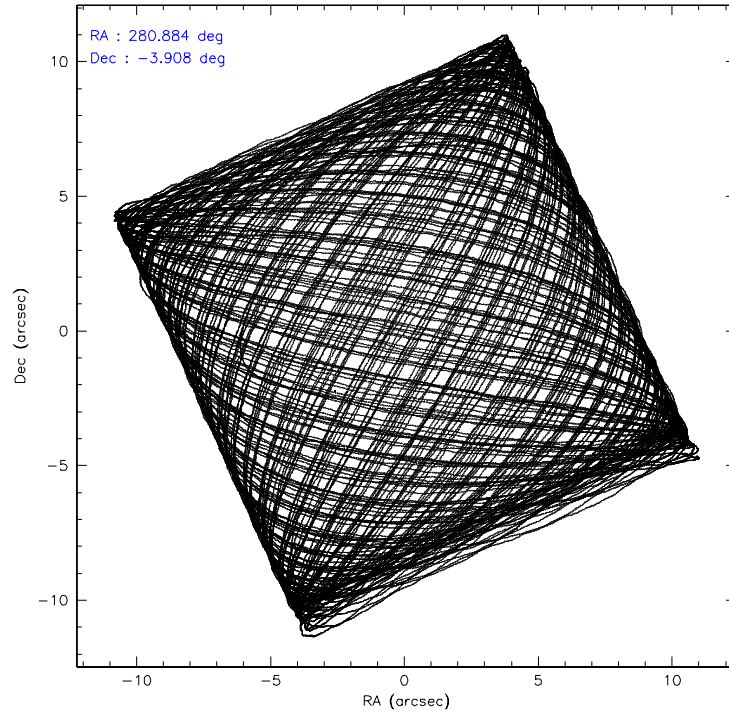
	ccd 0	ccd 1	ccd 2	ccd 3	ccd 6	ccd 7
grade 0 events	46058	48107	40131	42567	40256	21707
	6%	6%	5%	5%	5%	2%
grade 1 events	416	408	383	416	440	566
	0%	0%	0%	0%	0%	0%
grade 2 events	18934	19643	18690	17156	17863	89046
	2%	2%	2%	2%	2%	10%
grade 3 events	9020	9743	7916	8230	8691	19296
	1%	1%	1%	1%	1%	2%
grade 4 events	8193	9620	7995	8274	8436	19130
	1%	1%	1%	1%	1%	2%
grade 5 events	24133	25618	22410	25366	28860	58818
	3%	3%	2%	3%	3%	6%
grade 6 events	14707	16652	13865	14412	16137	202633
	2%	2%	1%	1%	2%	23%
grade 7 events	592323	596600	678371	652654	681370	466169
	82%	82%	85%	84%	84%	53%

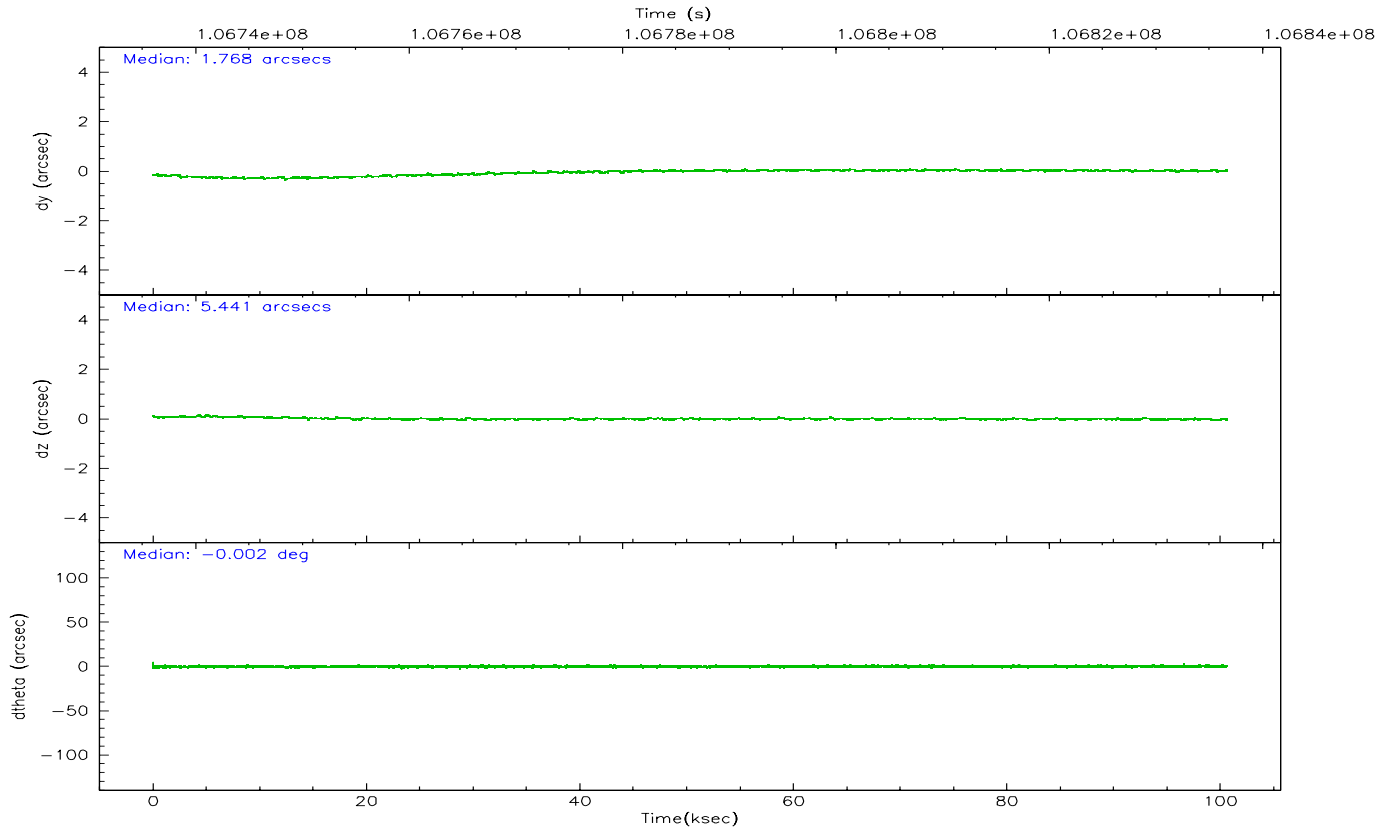
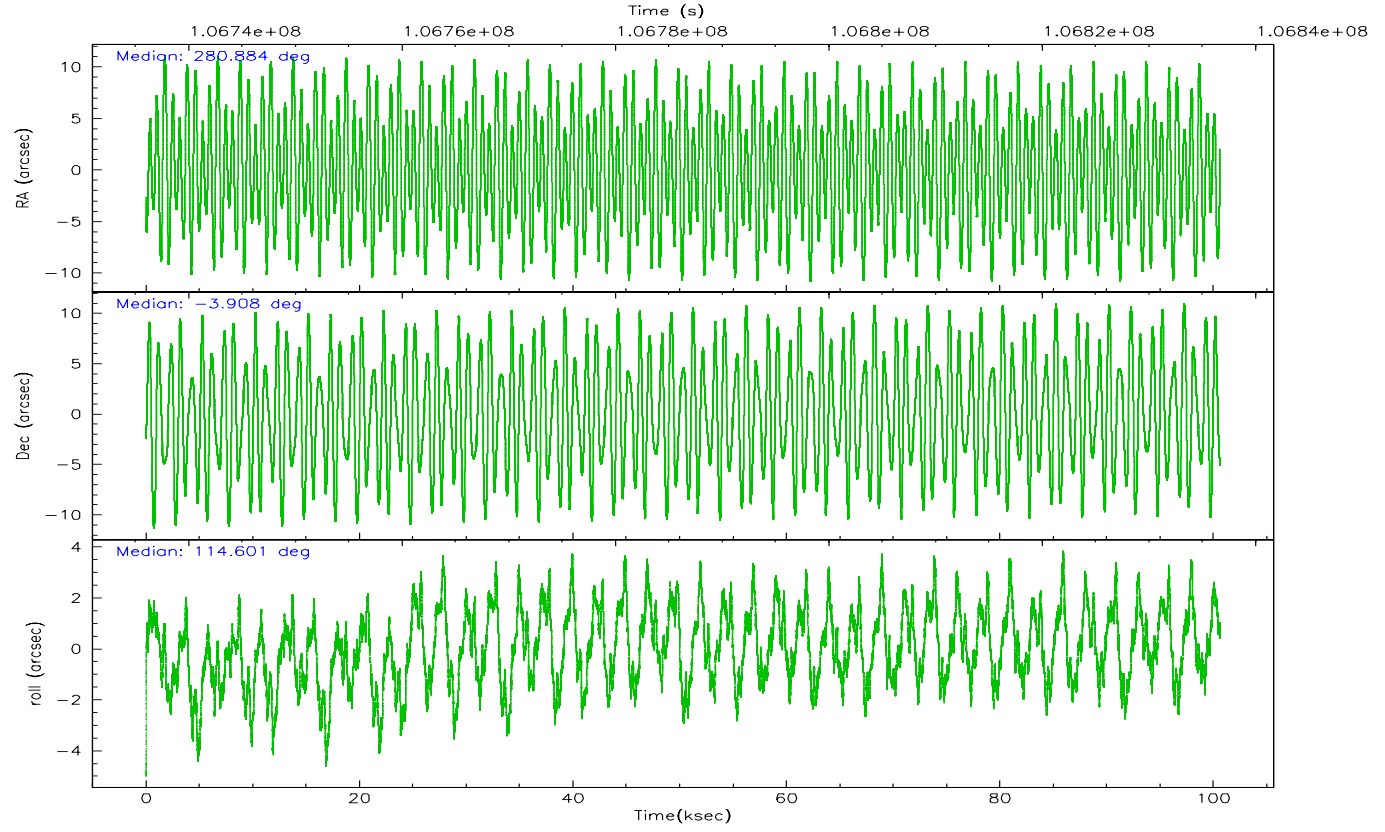


## 2.2 Compared Parameters

Parameter	Planned	Actual	Parameter	Planned	Actual
Instrument	ACIS	ACIS	Obspar format version number	6	6
Detector	ACIS-012367	ACIS-012367	Obspar file type	PREDICTED	ACTUAL
Grating	NONE	NONE	Obspar update status	NONE	UPDATED
Data mode	FAINT	FAINT	Number of optional ACIS chips dropped	0	0
Observation mode	POINTING	POINTING	On-chip summing requested	N	N
Pointing RA	280.906058	280.8836148020694	Subarray requested	NONE	NONE
Pointing Dec	-3.923575	-3.907685607026262	Alternating exposures requested	N	N
Pointing Roll	114.401307	114.6084663295275	Primary exposure time	0.000000	3.2
SIM focus pos (mm)	-0.782348	-0.7809083437167272			
SIM defocus (mm)	0	0.001439871863259334			
SIM translation stage pos (mm)	-233.592463	-233.5874344608287			
SIM translation stage offset (mm)	0	-0.005018542100998502			
Observation start time	106736671.184000	106735472.35397			
Observation start date	2001-05-20T09:03:27	2001-05-20T08:44:32			
Observation end time	106836671.184000	106837701.75795			
Observation end date	2001-05-21T12:50:07	2001-05-21T13:08:21			
Read mode	TIMED	TIMED			

## 2.3 Aspect



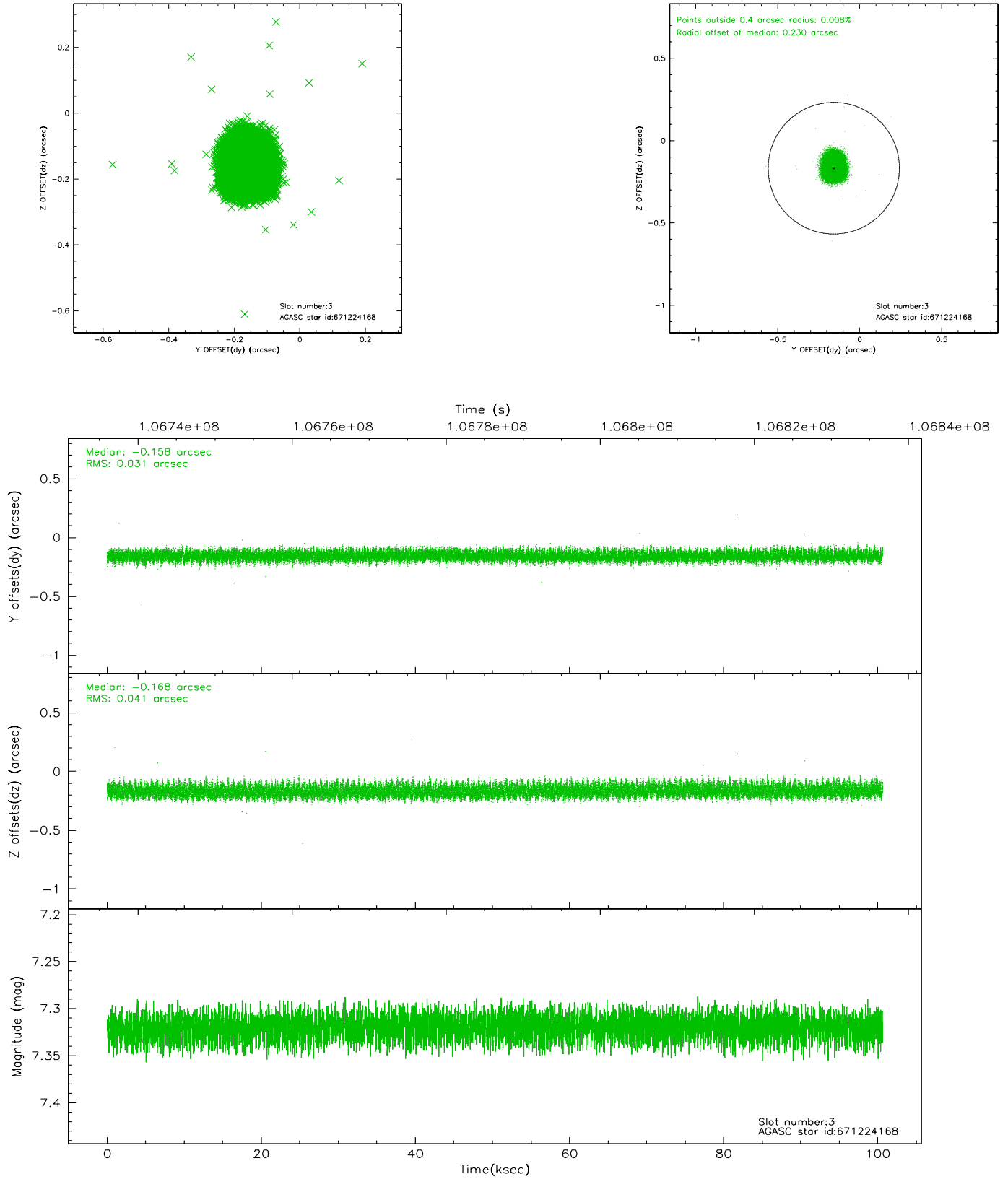


### Slot Statistics

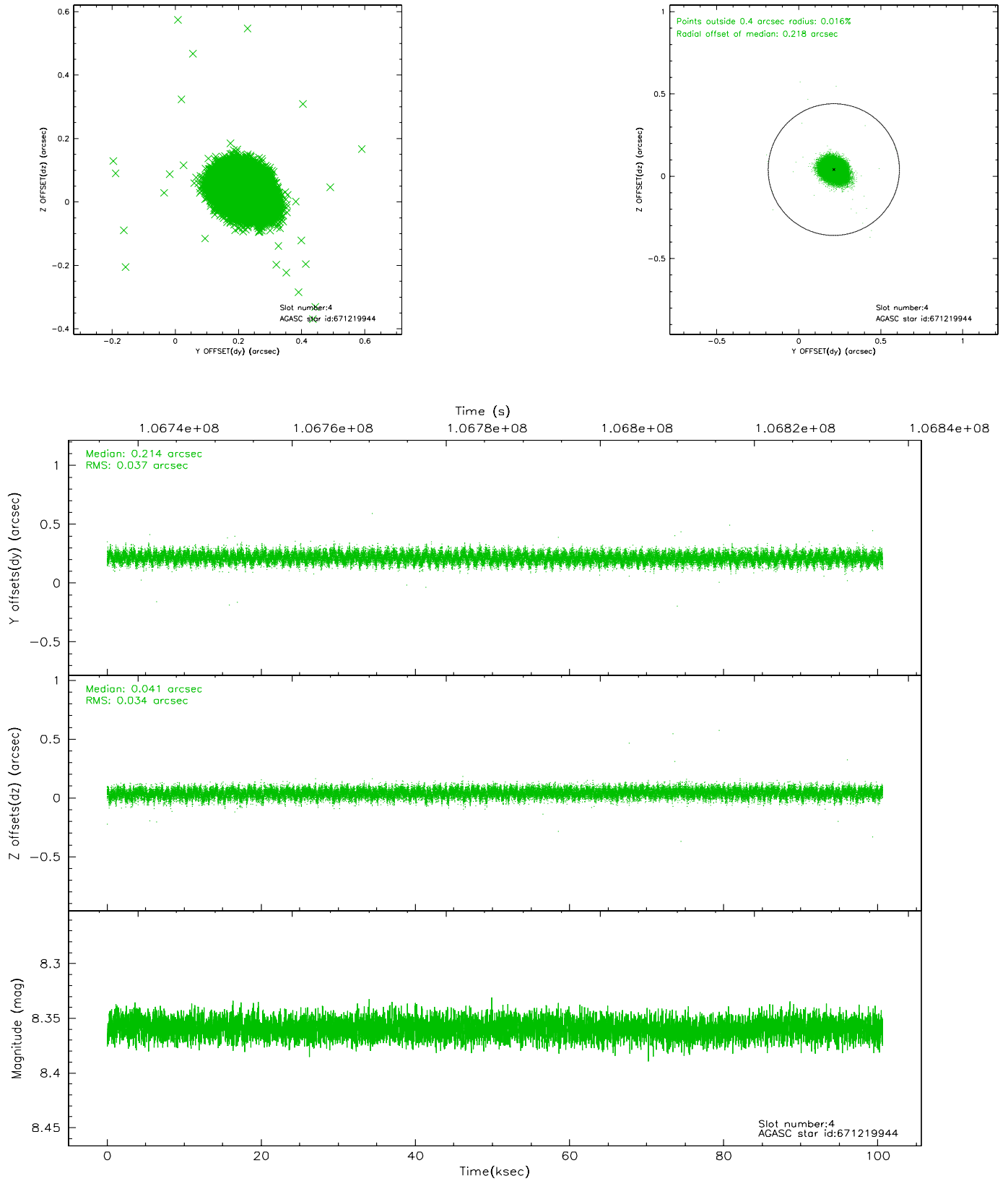
slot	status	id	mag	n_pts	med_dy	med_dz	dr1	dr2	ra	dec	mean_y	mean_z
0	FID	ACIS-I-3	7.45	24546	-0.015	0.190	0.008	0.014	0.000000	0.000000	55.52	-961.84
1	FID	ACIS-I-4	7.18	24544	-0.068	-0.065	0.008	0.014	0.000000	0.000000	2158.01	1070.98
2	FID	ACIS-I-5	7.23	24542	-0.015	-0.055	0.008	0.013	0.000000	0.000000	-1810.00	1068.75
3	GUIDE	671224168	7.32	49087	-0.158	-0.168	0.055	0.087	280.307659	-3.817213	1235.87	1799.23
4	GUIDE	671219944	8.36	49083	0.214	0.041	0.053	0.087	280.991216	-4.477272	-1941.18	544.65
5	GUIDE	671224408	8.95	49086	0.092	-0.180	0.082	0.133	280.545473	-4.404085	-1040.89	1892.83
6	GUIDE	670713072	8.99	49086	-0.054	0.181	0.069	0.112	281.205407	-3.604132	603.11	-1454.55
7	GUIDE	670714008	9.05	49070	-0.097	0.123	0.096	0.156	281.129237	-3.153193	2194.55	-1876.36

## 2.4 Star Slots

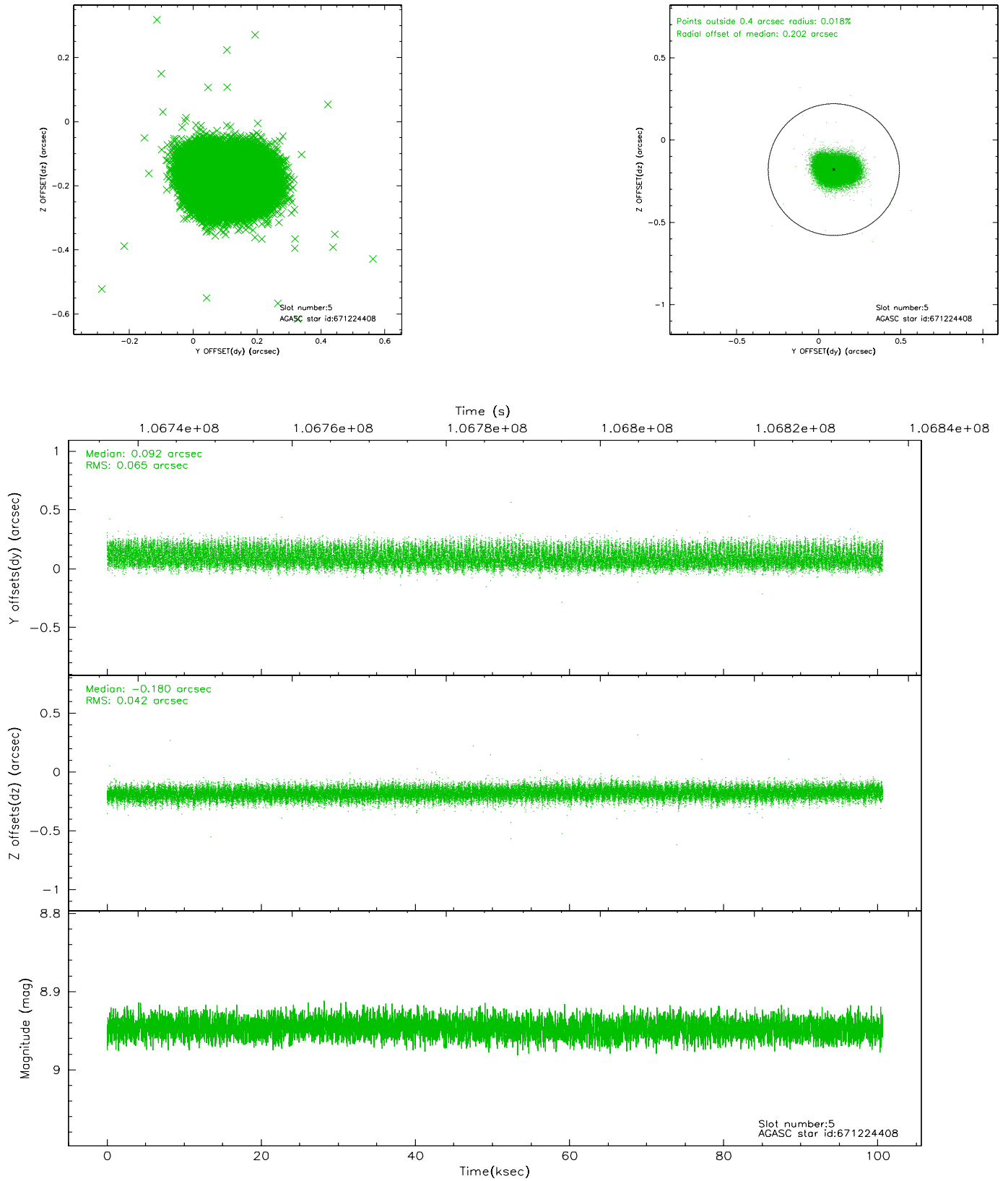
### 2.4.1 Slot 3



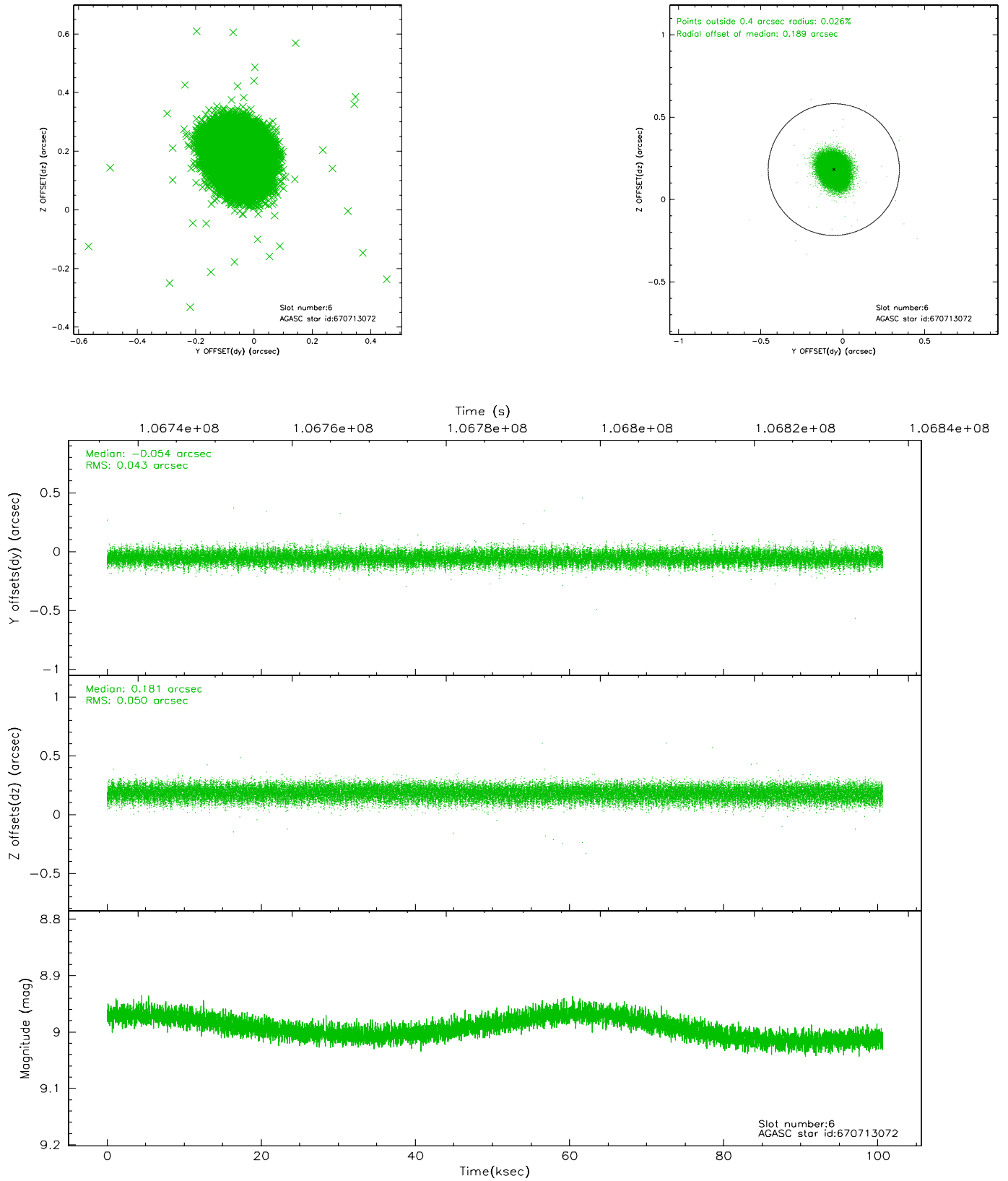
## 2.4.2 Slot 4



### 2.4.3 Slot 5

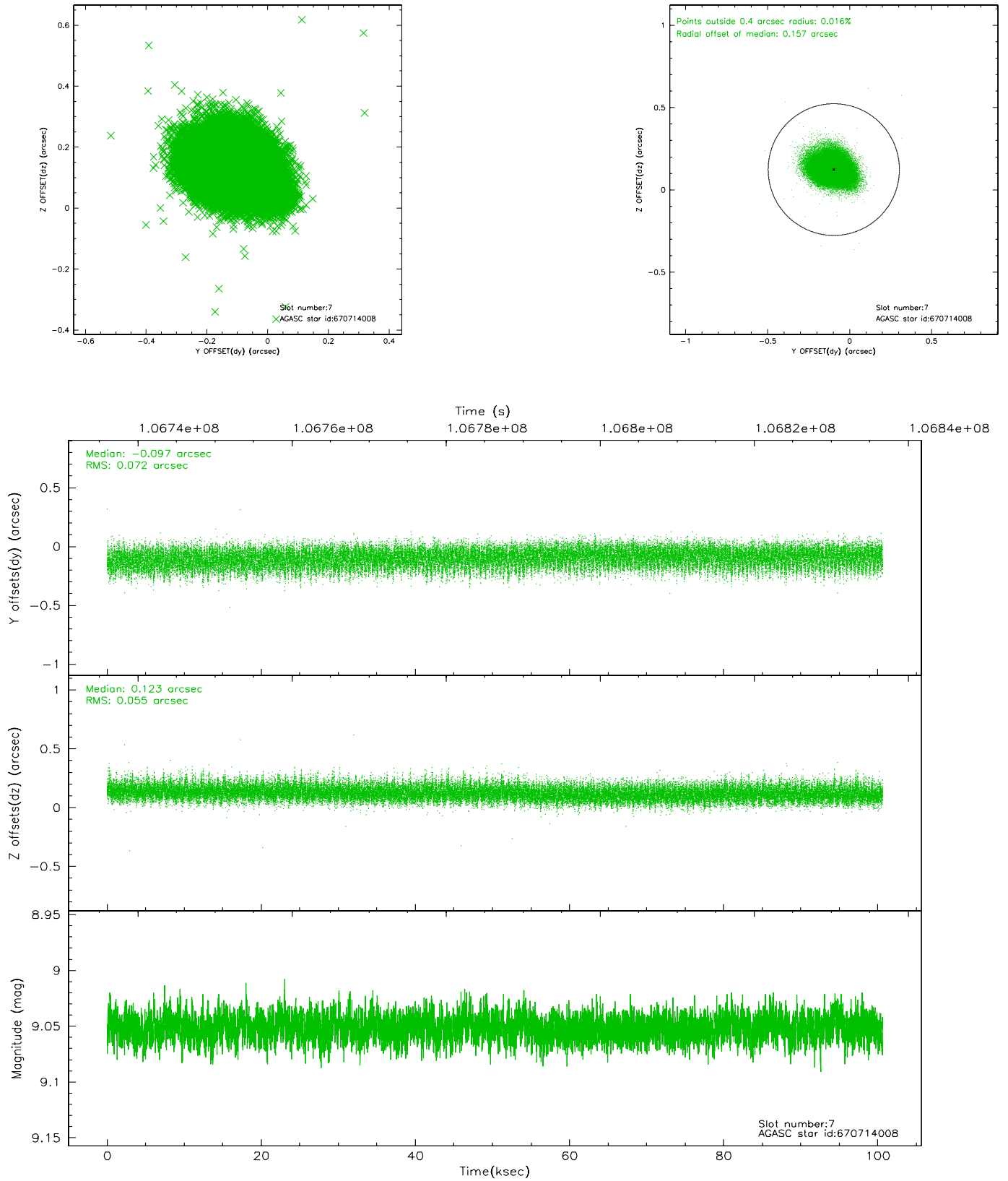


## 2.4.4 Slot 6



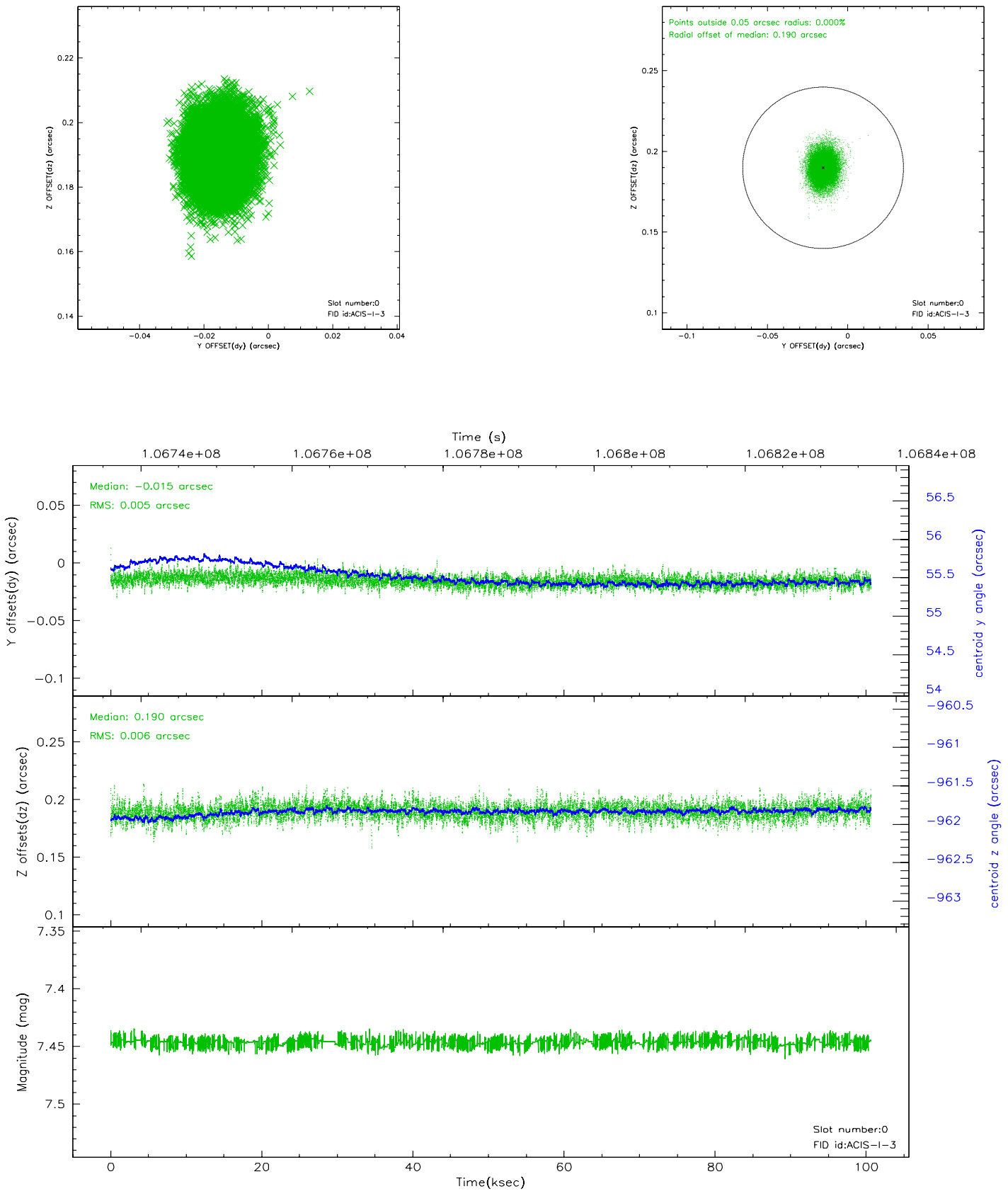


## 2.4.5 Slot 7

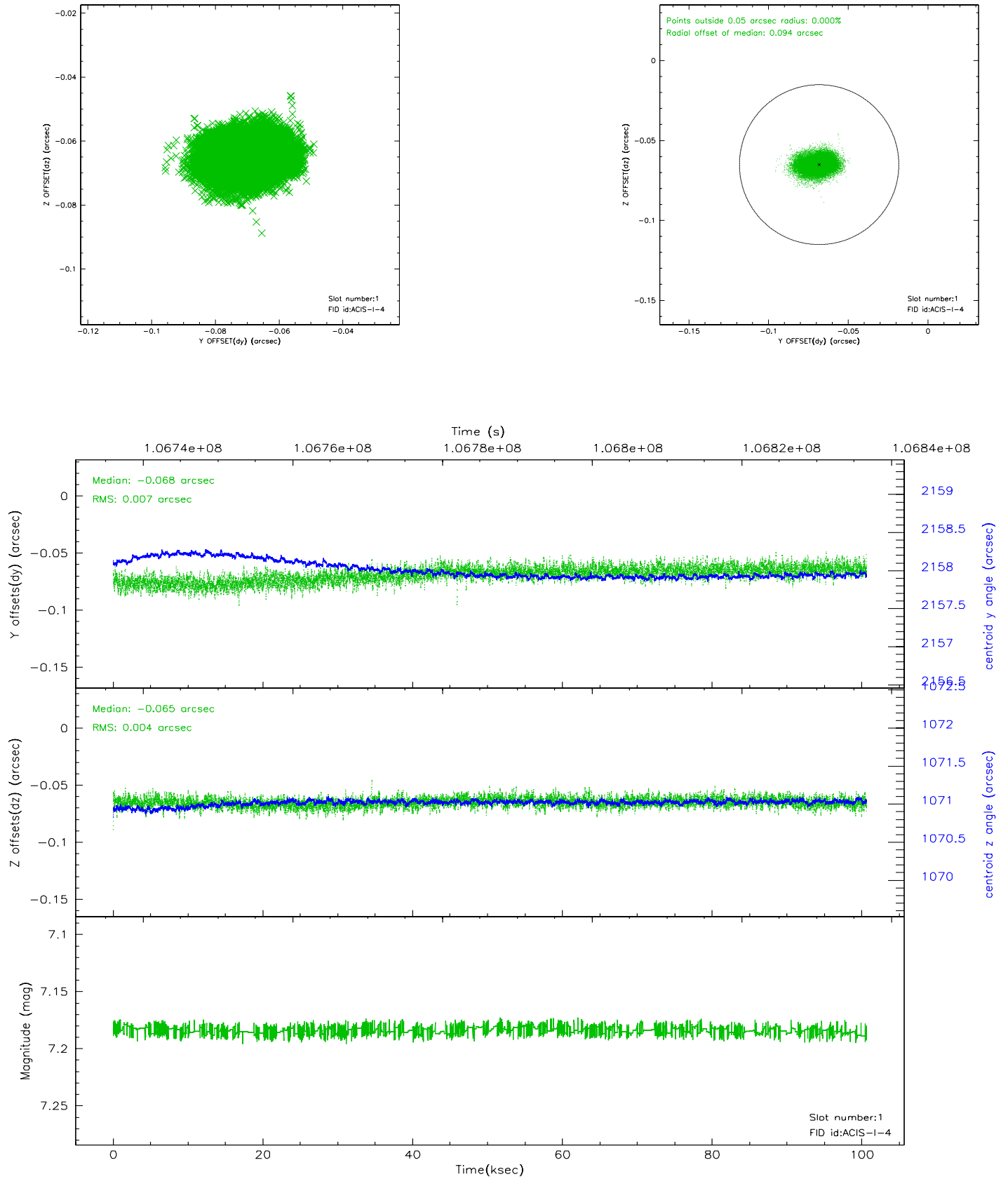


## 2.5 FID Slots

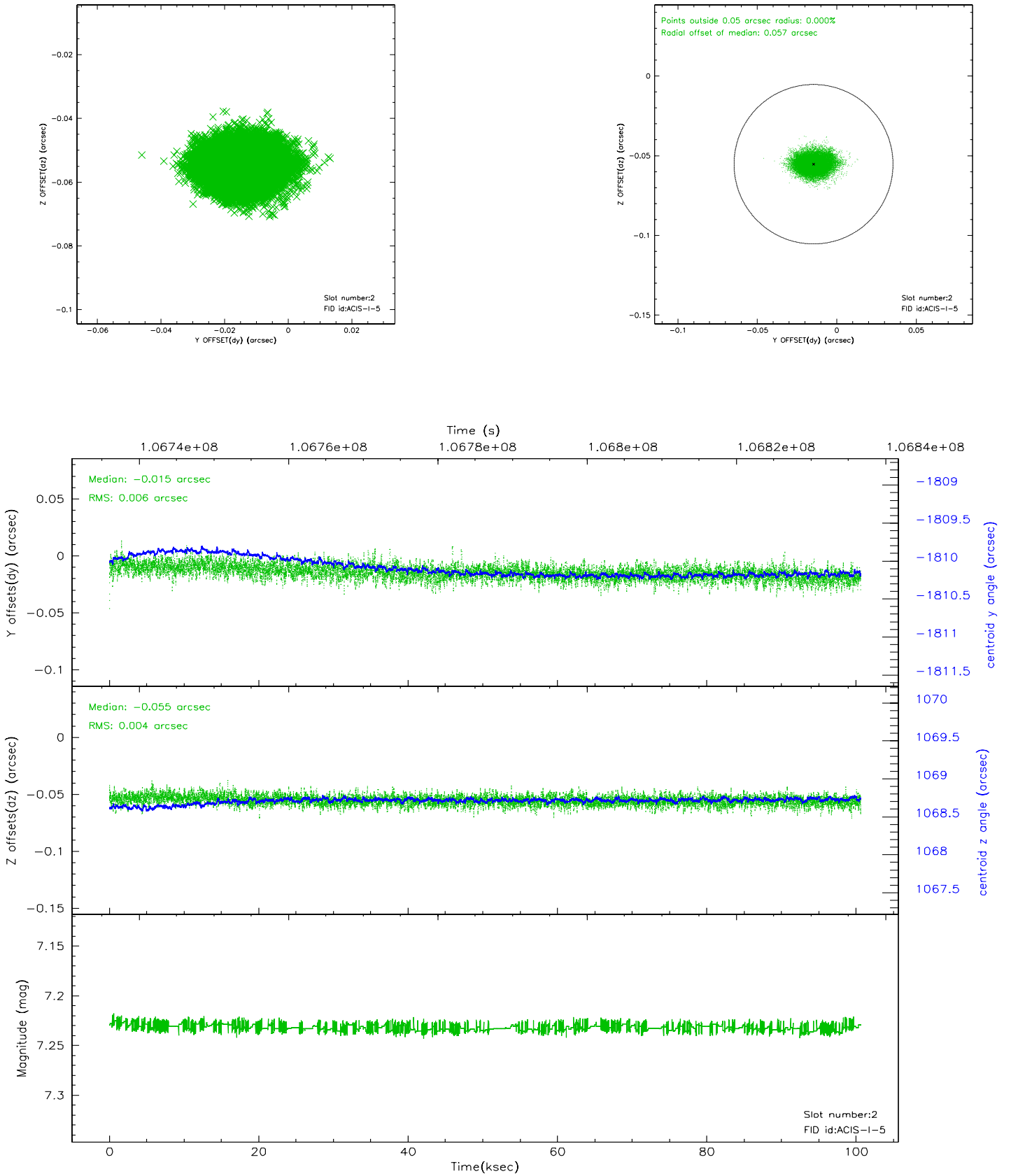
### 2.5.1 Slot 0



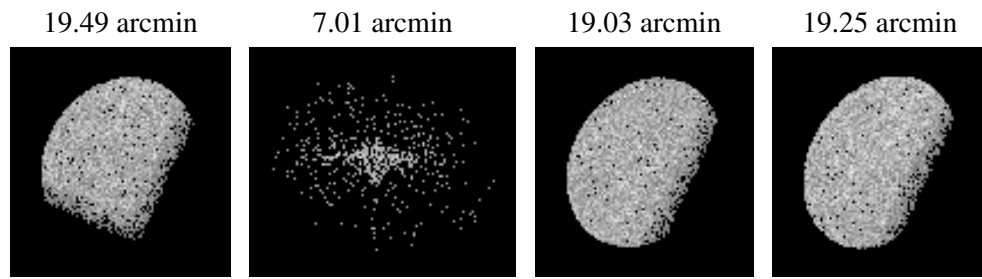
## 2.5.2 Slot 1



### 2.5.3 Slot 2



### 3 Point Sources



## A Summary

### A.1 Status

V&V Scientist	Jen Lauer
V&V Date (YYYY-MM-DD)	2006.11.22
V&V Edition	1
V&V Disposition and Status	OK
V&V Charge Time	99.913

### A.2 Comments