

# V&V Reference Report

## L2 ASCDS Version : 7.6.9

Observation 2293 - L2 Version 001  
Chandra X-Ray Center

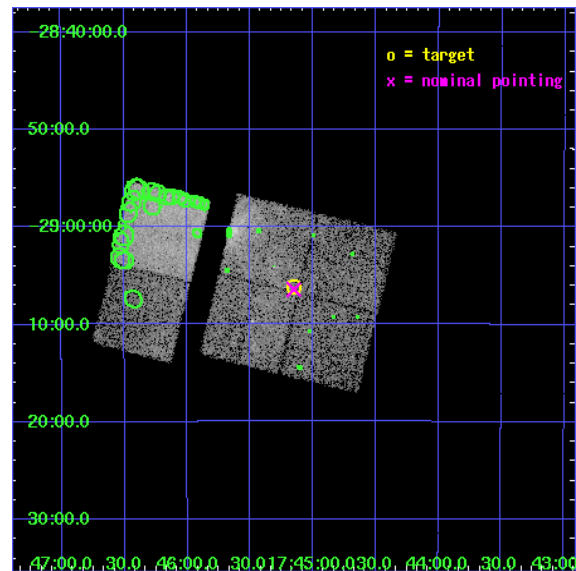
L2 Processing Date : Dec 14 2006

## Contents

<b>1</b>	<b>Front</b>	<b>2</b>
<b>2</b>	<b>OBI</b>	<b>3</b>
2.1	OBI . . . . .	3
2.1.1	Images . . . . .	3
2.1.2	Bias . . . . .	3
2.1.3	Parameters . . . . .	4
2.1.4	Events . . . . .	4
2.2	Compared Parameters . . . . .	5
2.3	Aspect . . . . .	6
2.4	Star Slots . . . . .	9
2.4.1	Slot 3 . . . . .	9
2.4.2	Slot 4 . . . . .	10
2.4.3	Slot 5 . . . . .	11
2.4.4	Slot 6 . . . . .	12
2.4.5	Slot 7 . . . . .	13
2.5	FID Slots . . . . .	14
2.5.1	Slot 0 . . . . .	14
2.5.2	Slot 1 . . . . .	15
2.5.3	Slot 2 . . . . .	16
<b>3</b>	<b>Point Sources</b>	<b>17</b>
<b>A</b>	<b>Summary</b>	<b>18</b>
A.1	Status . . . . .	18
A.2	Comments . . . . .	18

# 1 Front

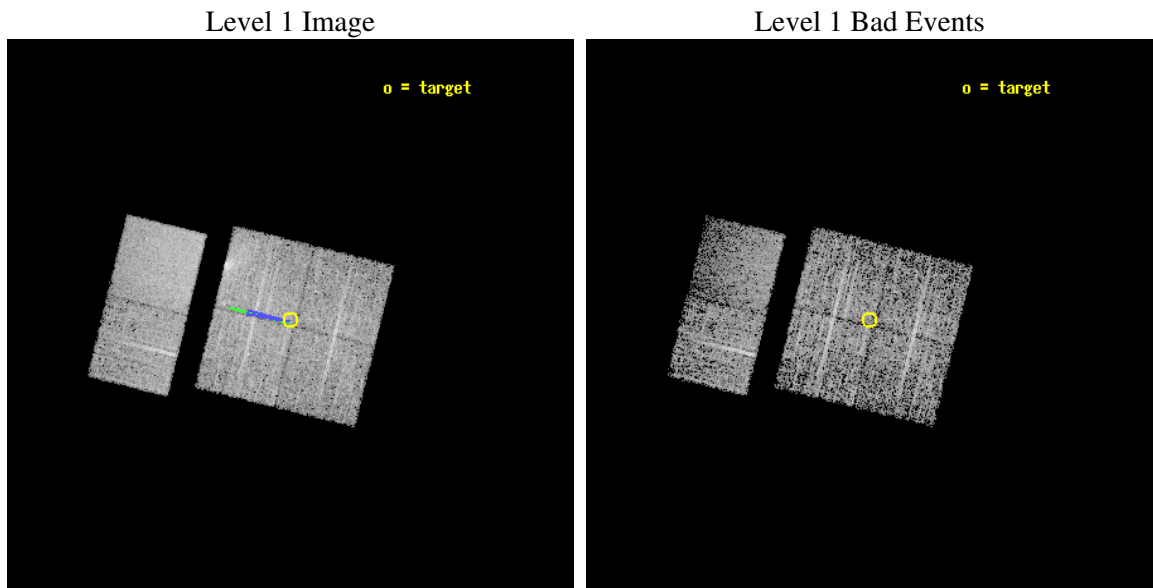
seq_num	900120
obs_id	2293
title	CHANDRA SURVEY OF THE GALACTIC RIDGE AROUND THE MILKY WAY CENTER
observer	Prof. Q. Daniel Wang
object	GCS 17
dtcycle	0
cycle	P
ra_targ	266.2887
dec_targ	-29.1026
ra_nom	266.28789404529
dec_nom	-29.107301980044
roll_nom	283.80730024815
revision	2
ontime	11257.600010484
livetime	11115.049500639
ontime0	11257.600010484
ontime1	11257.600010484
ontime2	11257.600010484
ontime3	11257.600010484
ontime6	11257.600010484
ontime7	11257.600010484
l2events	70709



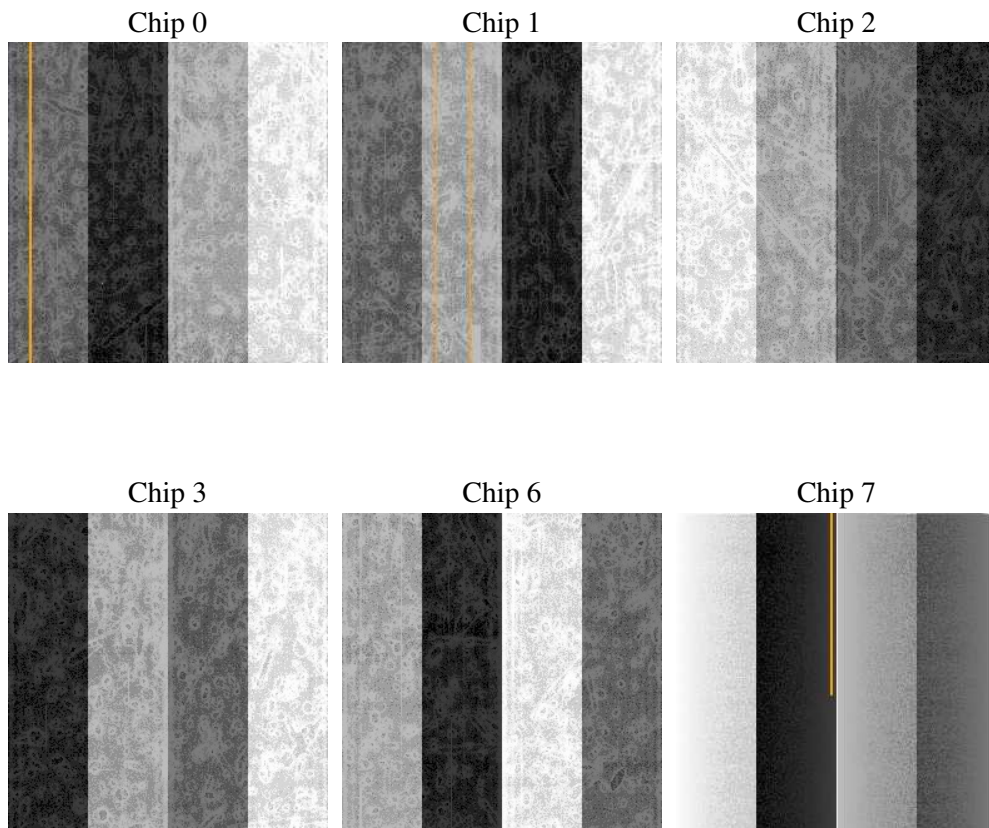
## 2 OBI

### 2.1 OBI

#### 2.1.1 Images



#### 2.1.2 Bias



### 2.1.3 Parameters

obi_num	0
ascdsver	7.6.9
caldsver	3.2.4
date	2006-12-14T13:45:44
revision	2

sched_exp_time	11500.000000
ontime	11262.498220533
ontime0	11262.498200625
ontime1	11262.498200625
ontime2	11262.498220533
ontime3	11262.498220533
ontime6	11262.498200625
ontime7	11262.498200625
l1events	216426

### 2.1.4 Events

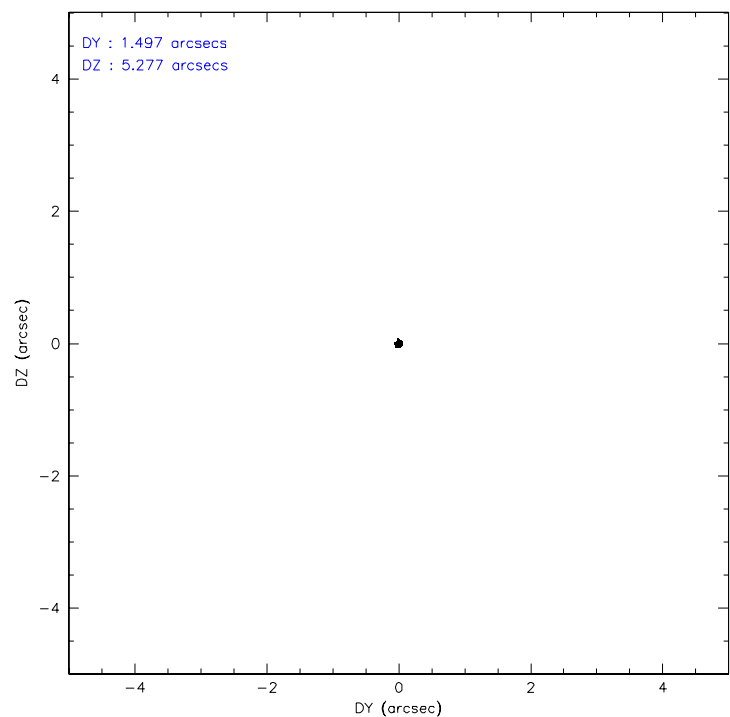
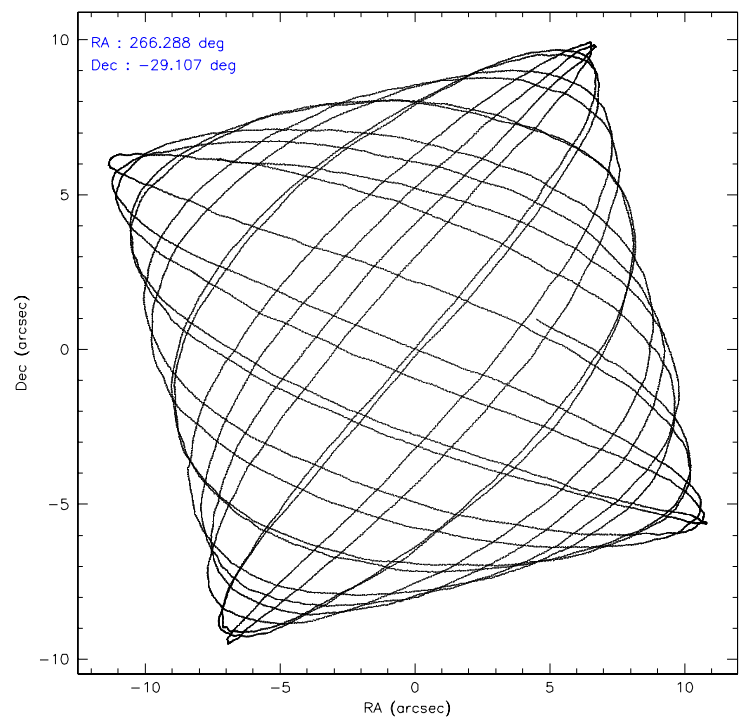
	ccd 0	ccd 1	ccd 2	ccd 3	ccd 6	ccd 7
level 1 events	29556	30892	36054	41028	33224	45672
rejected events	22010	22980	25851	25916	25483	19541
rejected %	74%	74%	71%	63%	76%	42%

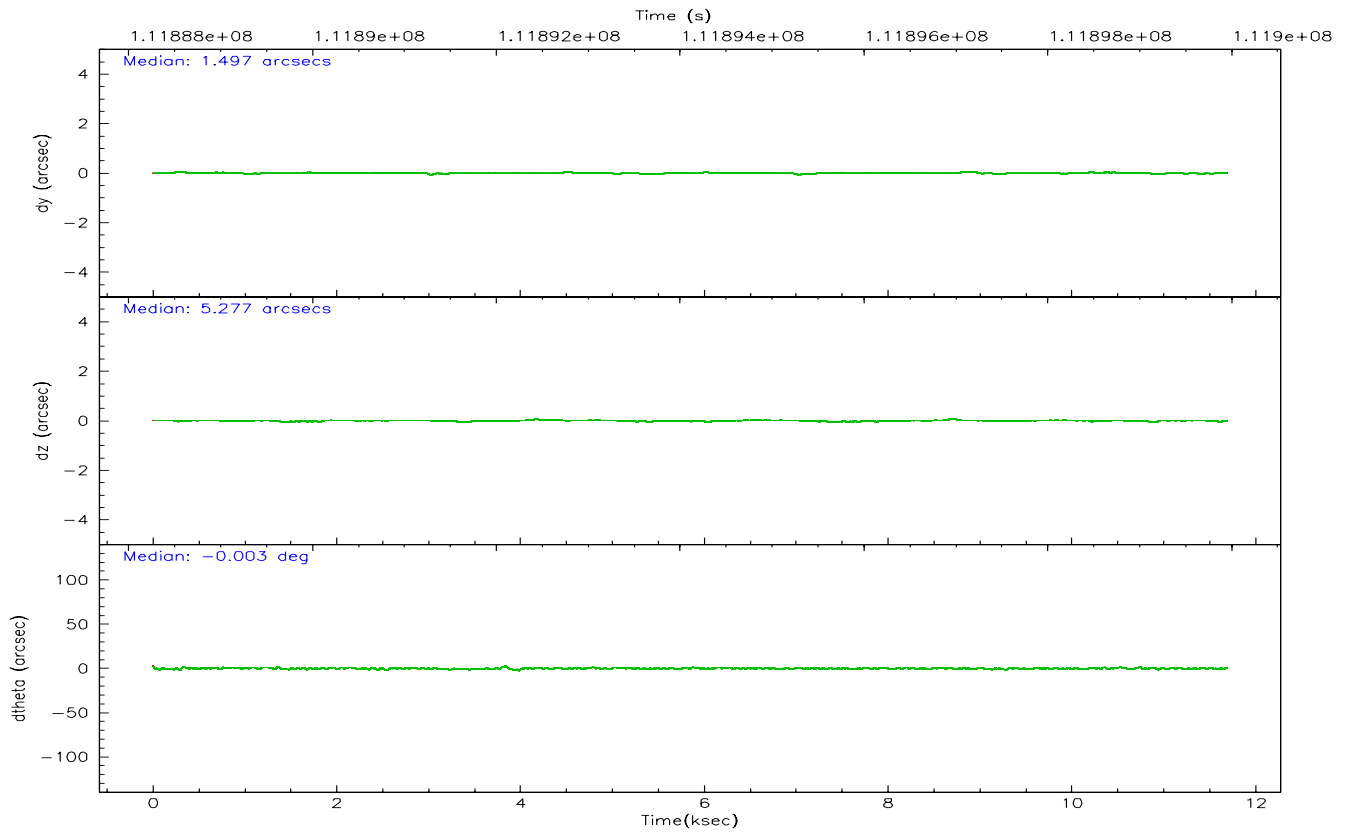
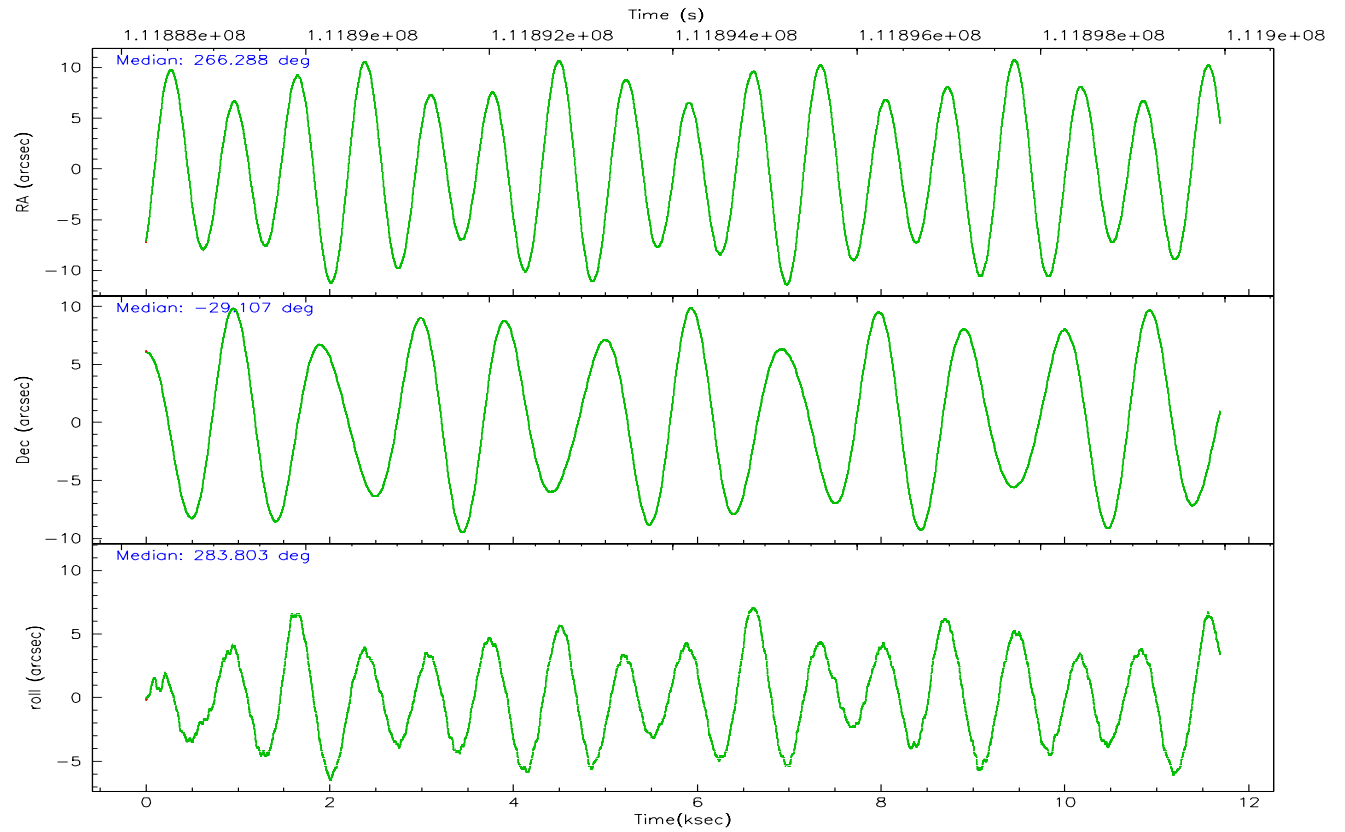
	ccd 0	ccd 1	ccd 2	ccd 3	ccd 6	ccd 7
grade 0 events	4011	4115	6039	9120	4206	2215
	13%	13%	16%	22%	12%	4%
grade 1 events	24	25	47	61	41	28
	0%	0%	0%	0%	0%	0%
grade 2 events	1399	1462	1687	2480	1357	6957
	4%	4%	4%	6%	4%	15%
grade 3 events	562	587	655	973	570	1649
	1%	1%	1%	2%	1%	3%
grade 4 events	562	596	679	924	537	1613
	1%	1%	1%	2%	1%	3%
grade 5 events	1189	1294	1062	1311	1356	3307
	4%	4%	2%	3%	4%	7%
grade 6 events	1016	1155	1152	1624	1075	13714
	3%	3%	3%	3%	3%	30%
grade 7 events	20793	21658	24733	24535	24082	16189
	70%	70%	68%	59%	72%	35%

## 2.2 Compared Parameters

Parameter	Planned	Actual	Parameter	Planned	Actual
Instrument	ACIS	ACIS	Obspar format version number	6	6
Detector	ACIS-012367	ACIS-012367	Obspar file type	PREDICTED	ACTUAL
Grating	NONE	NONE	Obspar update status	NONE	UPDATED
Data mode	FAINT	FAINT	Number of optional ACIS chips dropped	0	0
Observation mode	POINTING	POINTING	On-chip summing requested	N	N
Pointing RA	266.266069	266.2878940452903	Subarray requested	NONE	NONE
Pointing Dec	-29.087487	-29.10730198004428	Alternating exposures requested	N	N
Pointing Roll	283.587999	283.8073002481511	Primary exposure time	0.000000	3.2
Roll angle	283.600000	283.600000			
Roll tolerance	2.000000	2.000000			
Roll constraint allows 180D rotation	N	N			
SIM focus pos (mm)	-0.782348	-0.7809083437167272			
SIM defocus (mm)	0	0.001439871863259334			
SIM translation stage pos (mm)	-233.592463	-233.5874344608287			
SIM translation stage offset (mm)	0	-0.005018542100998502			
Observation start time	111888454.184000	111888078.36748			
Observation start date	2001-07-19T00:06:30	2001-07-19T00:01:18			
Observation end time	111899954.184000	111900088.29295			
Observation end date	2001-07-19T03:18:10	2001-07-19T03:21:28			
Read mode	TIMED	TIMED			

## 2.3 Aspect





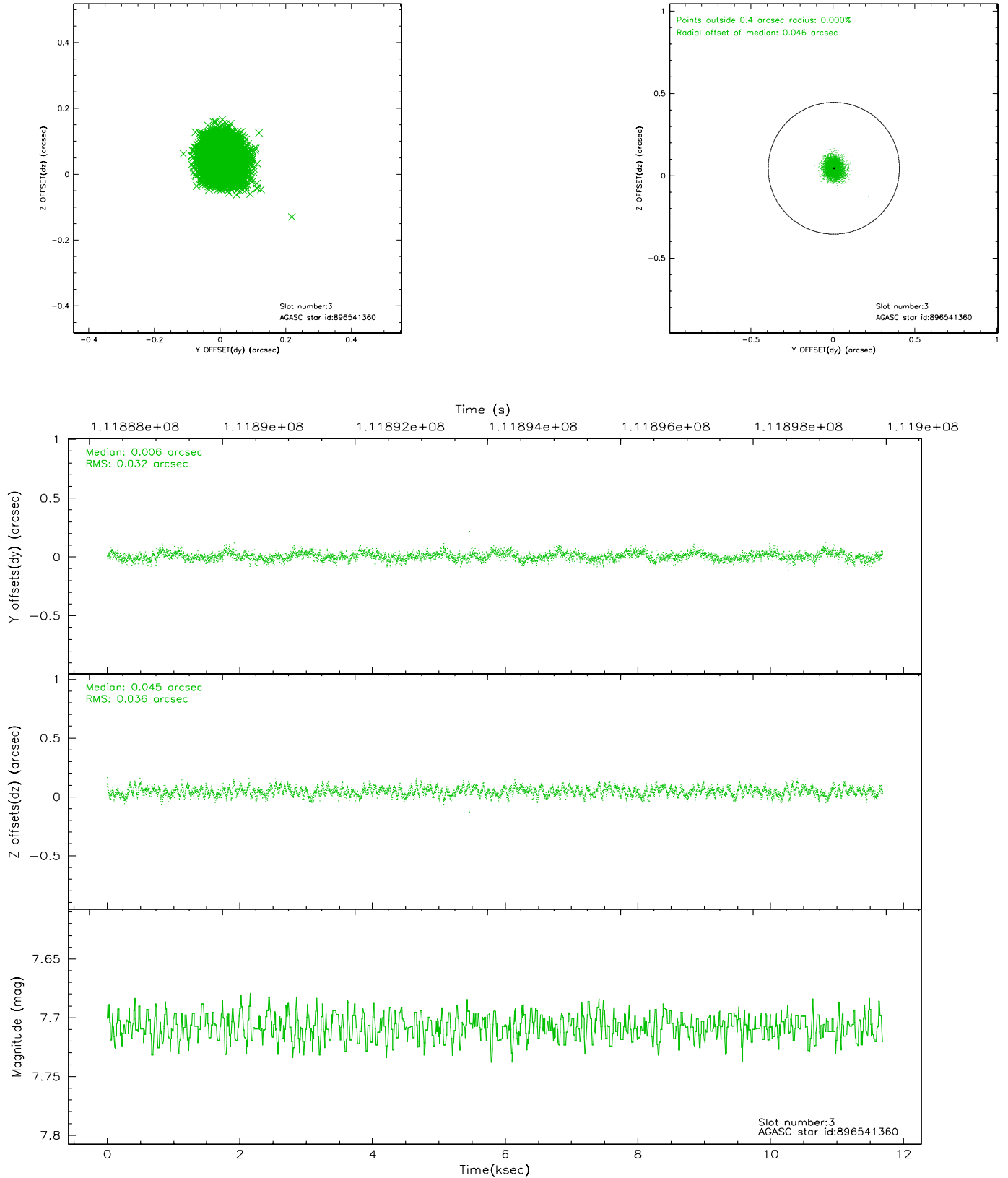
### Slot Statistics

slot	status	id	mag	n_pts	med_dy	med_dz	dr1	dr2	ra	dec	mean_y	mean_z
0	FID	ACIS-I-2	7.15	2852	-0.012	-0.027	0.009	0.016	0.000000	0.000000	-755.84	-835.02
1	FID	ACIS-I-4	7.19	2852	-0.073	0.024	0.005	0.009	0.000000	0.000000	2157.95	1071.02
2	FID	ACIS-I-5	7.23	2851	-0.016	0.072	0.008	0.014	0.000000	0.000000	-1809.13	1069.36
3	GUIDE	896541360	7.71	5702	0.006	0.045	0.051	0.082	266.684478	-29.453744	1592.87	964.85
4	GUIDE	896537176	8.02	5703	-0.095	0.047	0.054	0.088	266.498272	-28.678259	-1258.00	1059.07
5	GUIDE	896540808	7.50	5704	0.022	0.043	0.046	0.075	265.985401	-29.308604	568.53	-1043.30
6	GUIDE	896536320	8.97	5701	0.099	-0.121	0.060	0.100	266.369048	-29.307026	845.38	128.38
7	GUIDE	896405288	9.45	5701	-0.034	-0.009	0.099	0.160	265.652078	-28.763879	-1581.64	-1610.89

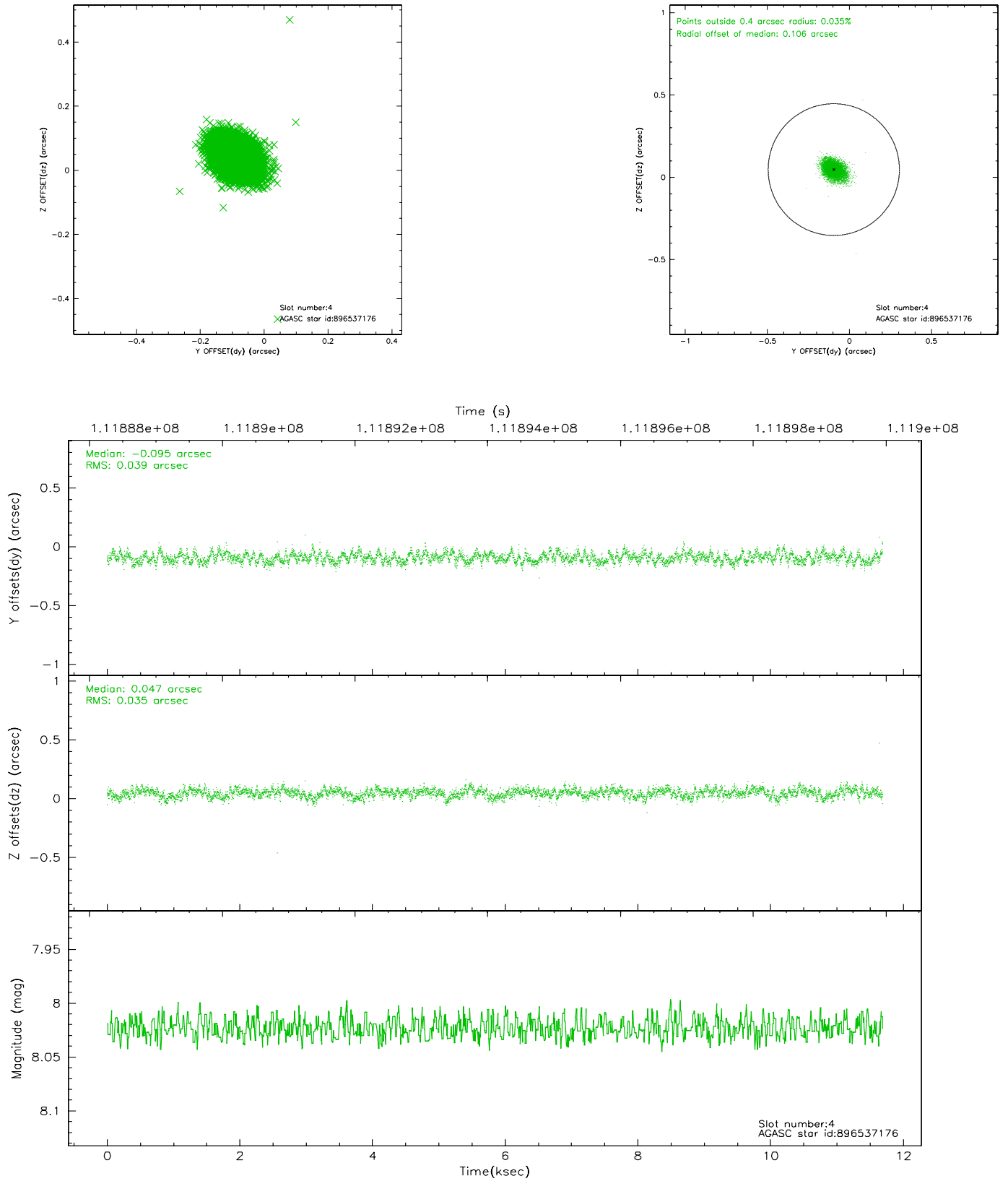


## 2.4 Star Slots

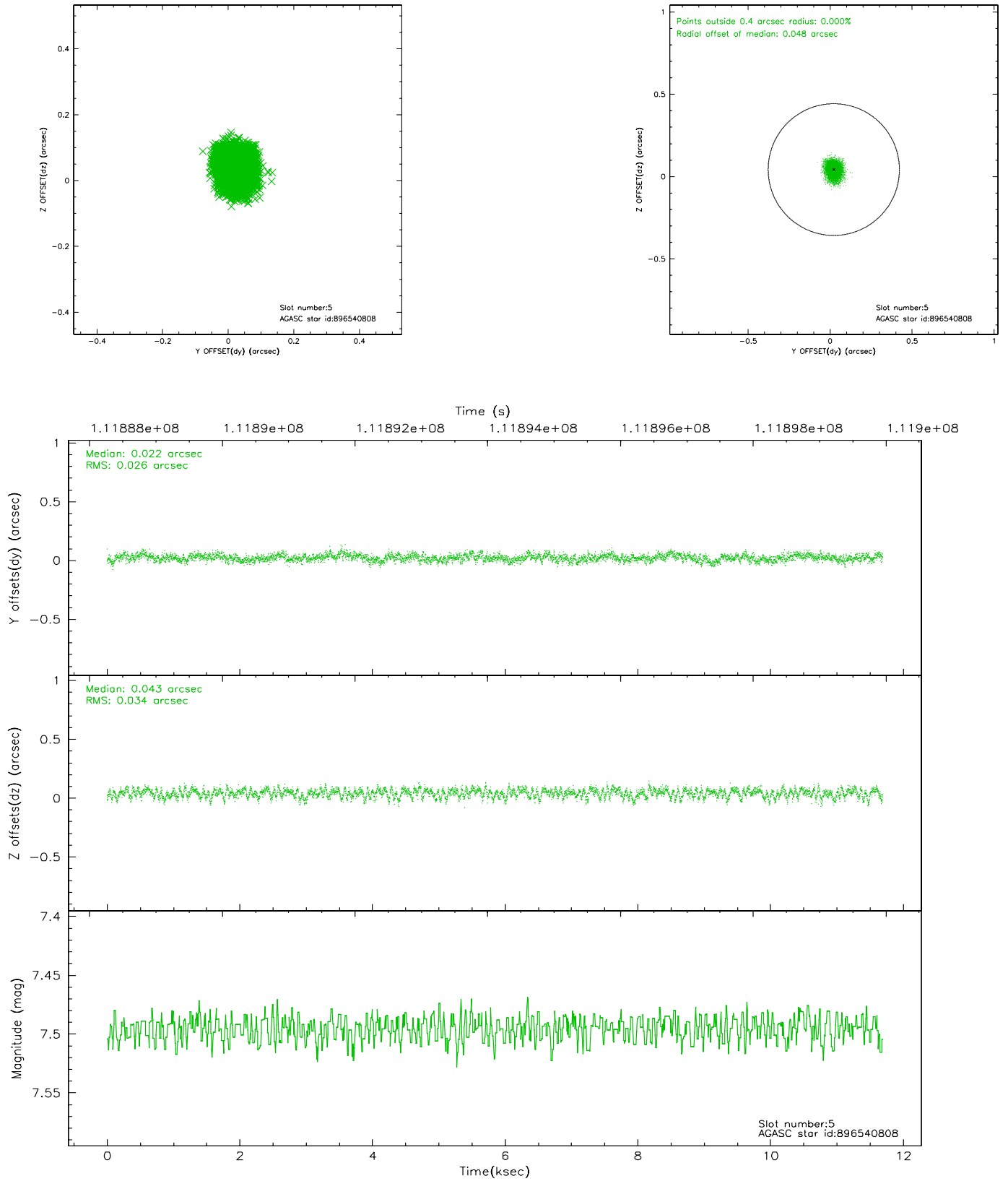
### 2.4.1 Slot 3



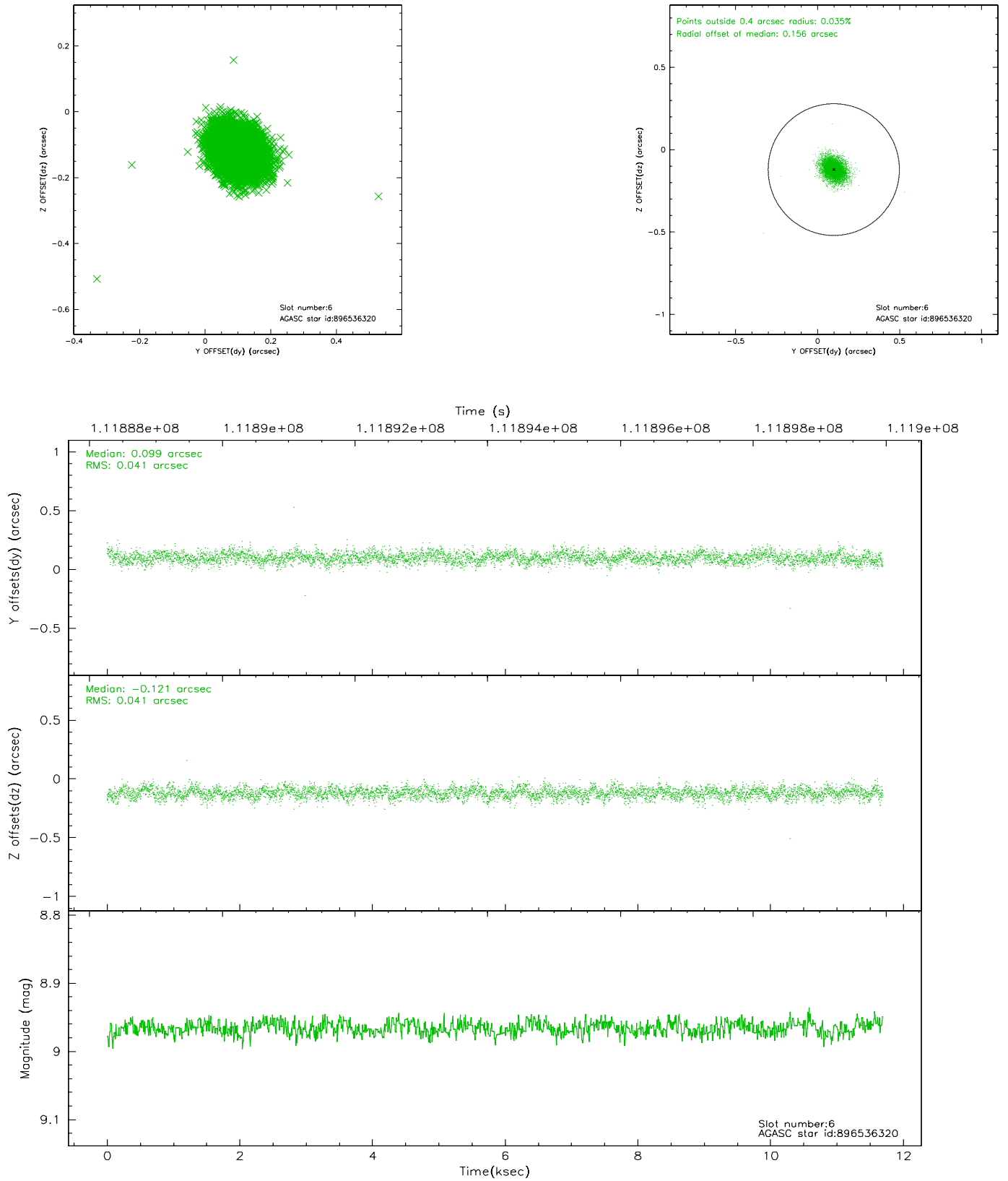
## 2.4.2 Slot 4



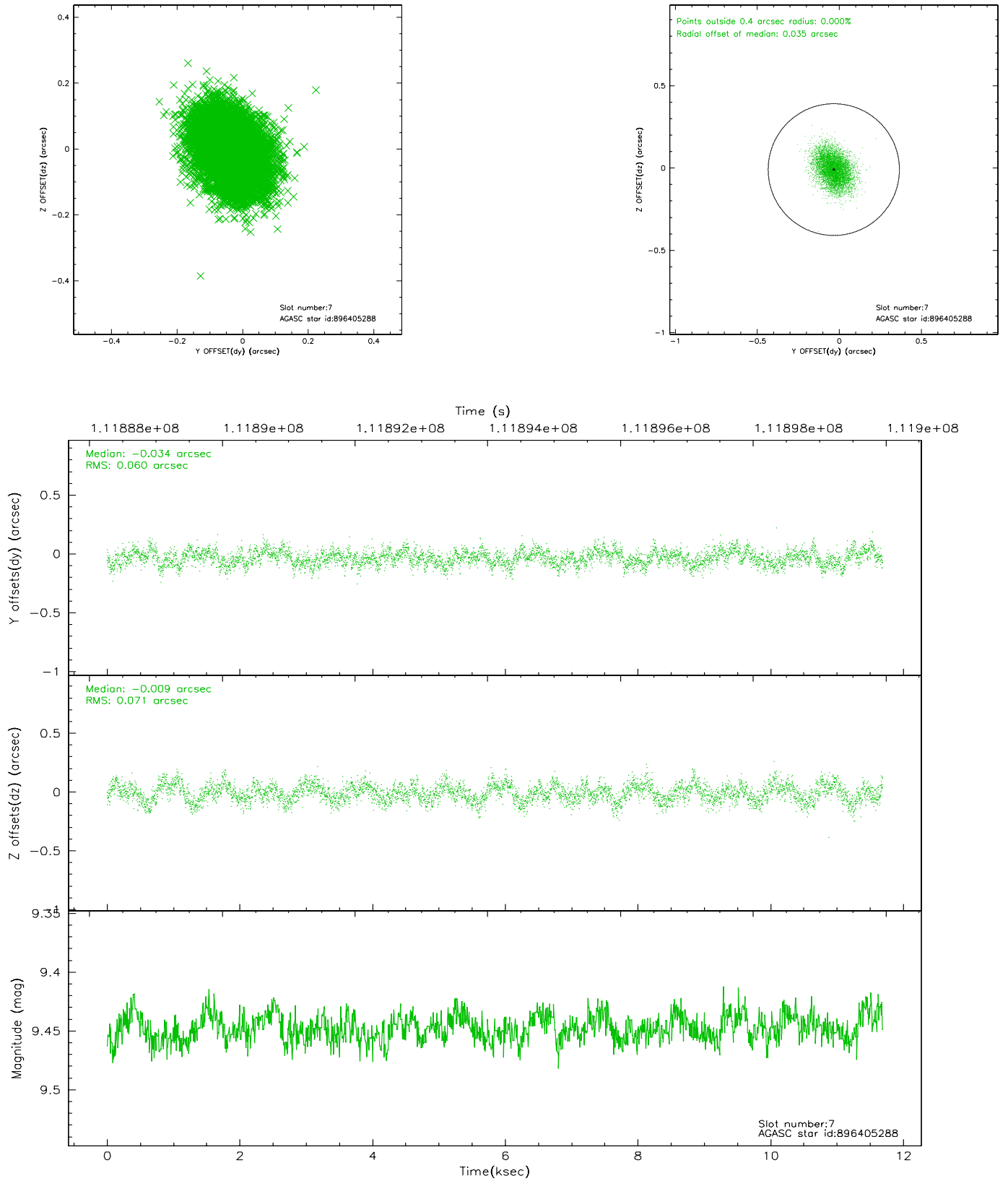
### 2.4.3 Slot 5



## 2.4.4 Slot 6

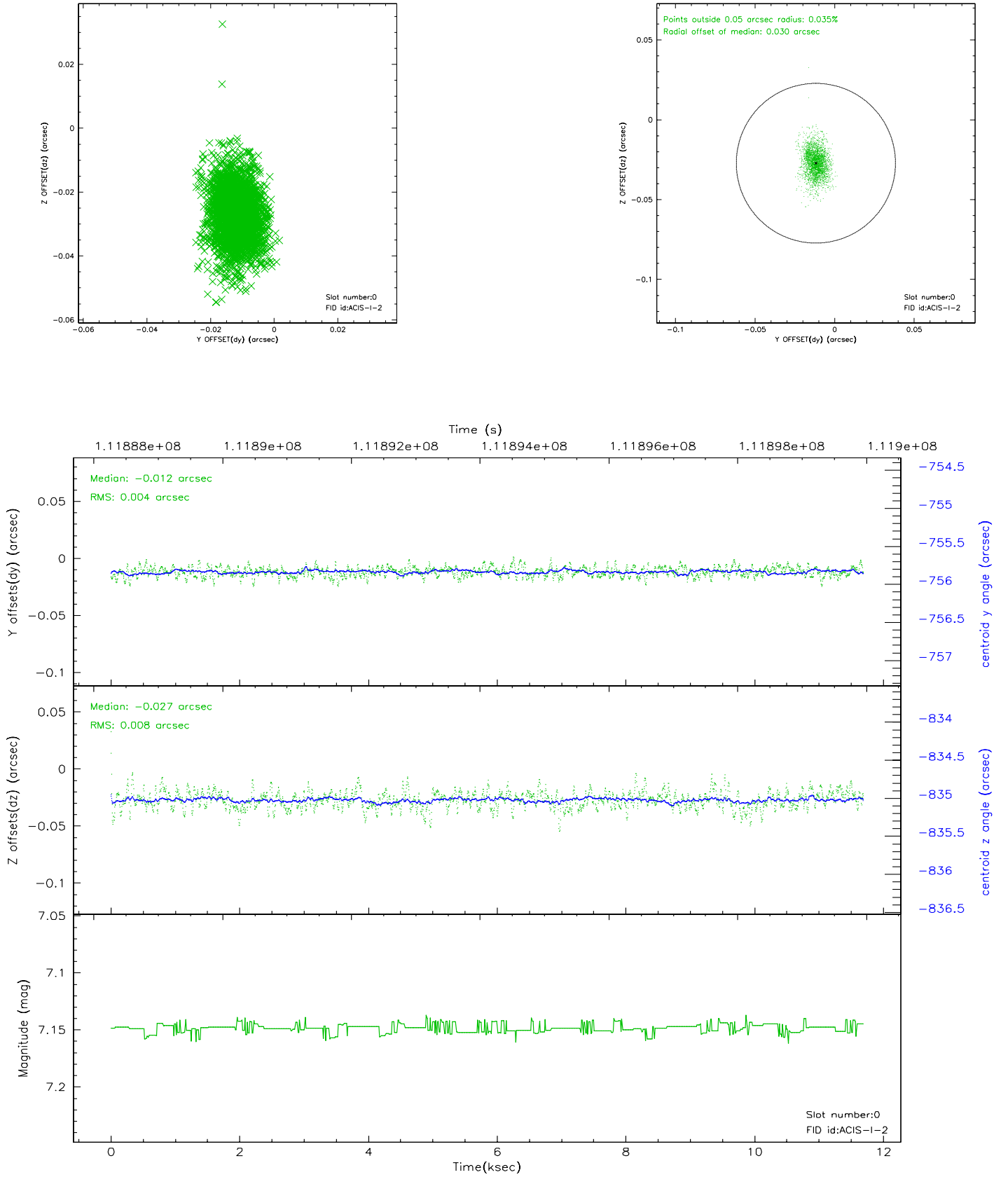


## 2.4.5 Slot 7

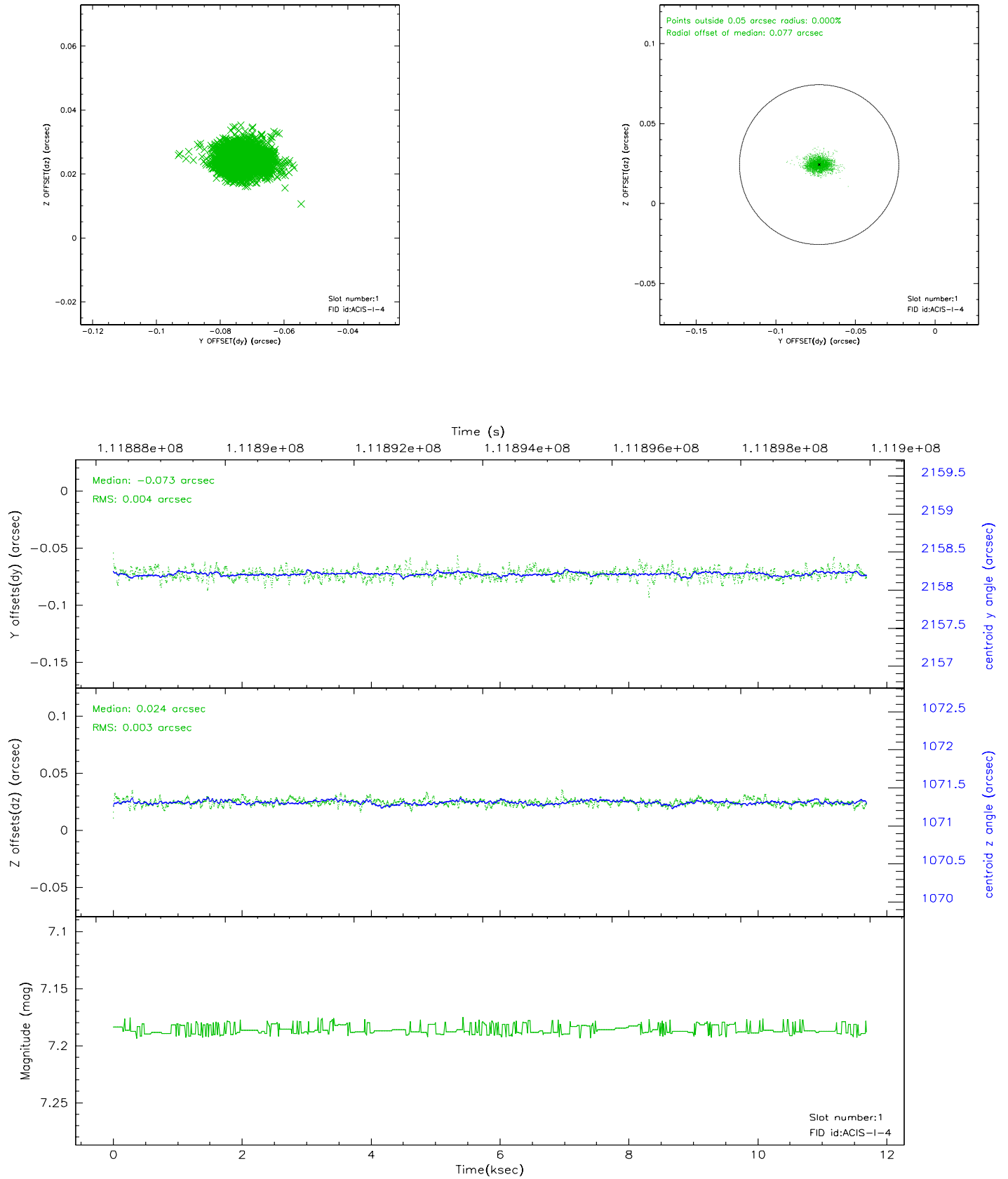


## 2.5 FID Slots

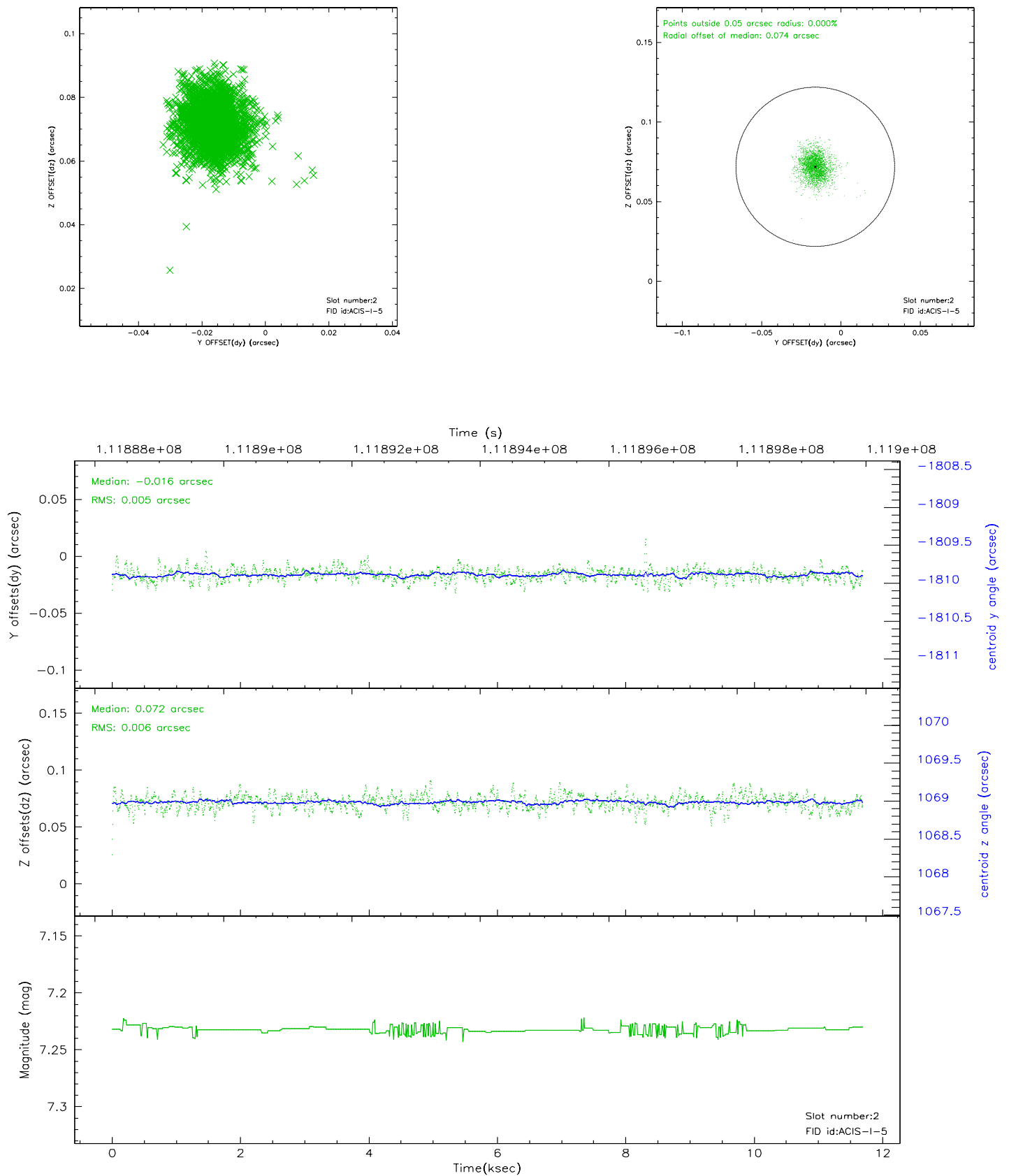
### 2.5.1 Slot 0



## 2.5.2 Slot 1

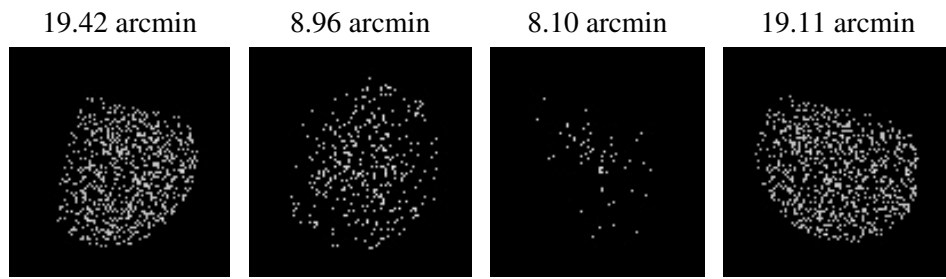


### 2.5.3 Slot 2





### 3 Point Sources



## A Summary

### A.1 Status

V&V Scientist	Beth Sundheim
V&V Date (YYYY-MM-DD)	2006.12.14
V&V Edition	1
V&V Disposition and Status	OK
V&V Charge Time	11.3

### A.2 Comments

Roll constraint met.