

V&V Reference Report

L2 ASCDS Version : 7.6.9

Observation 2292 - L2 Version 001
Chandra X-Ray Center

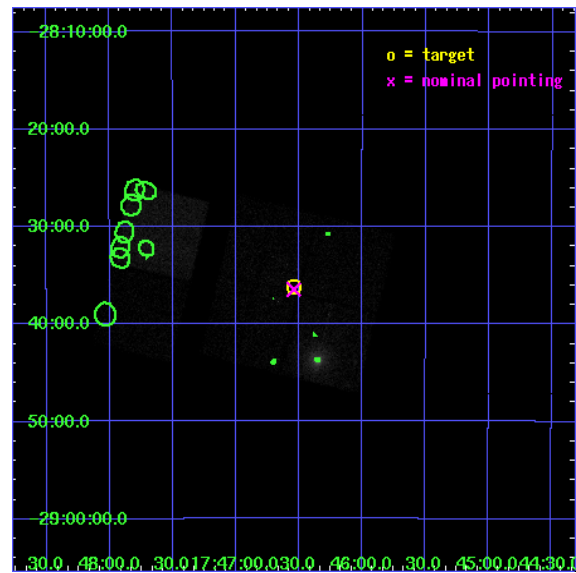
L2 Processing Date : Dec 14 2006

Contents

1	Front	2
2	OBI	3
2.1	OBI	3
2.1.1	Images	3
2.1.2	Bias	3
2.1.3	Parameters	4
2.1.4	Events	4
2.2	Compared Parameters	5
2.3	Aspect	6
2.4	Star Slots	9
2.4.1	Slot 3	9
2.4.2	Slot 4	10
2.4.3	Slot 5	11
2.4.4	Slot 6	12
2.4.5	Slot 7	13
2.5	FID Slots	14
2.5.1	Slot 0	14
2.5.2	Slot 1	15
2.5.3	Slot 2	16
3	Point Sources	17
A	Summary	18
A.1	Status	18
A.2	Comments	18

1 Front

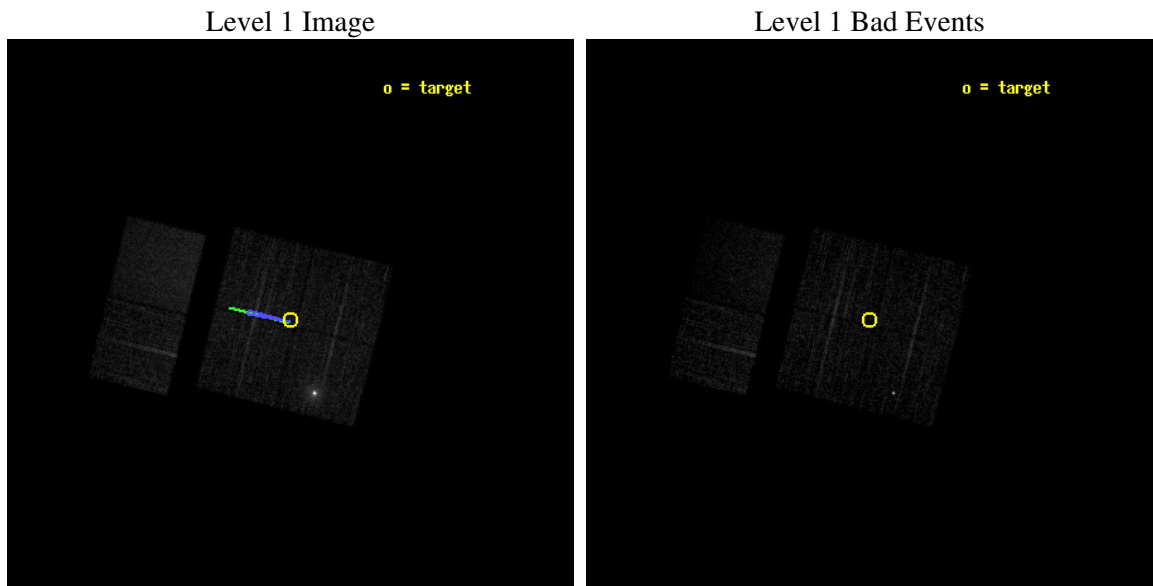
seq_num	900119
obs_id	2292
title	CHANDRA SURVEY OF THE GALACTIC RIDGE AROUND THE MILKY WAY CENTER
observer	Prof. Q. Daniel Wang
object	GCS 8
dtcycle	0
cycle	P
ra_targ	266.6364
dec_targ	-28.6031
ra_nom	266.63554374953
dec_nom	-28.607801441077
roll_nom	283.80728456645
revision	2
ontime	11750.359060615
livetime	11601.568938973
ontime0	11753.600010946
ontime1	11750.359060615
ontime2	11750.359060615
ontime3	11750.359060615
ontime6	11750.359060615
ontime7	11753.600010946
l2events	76349



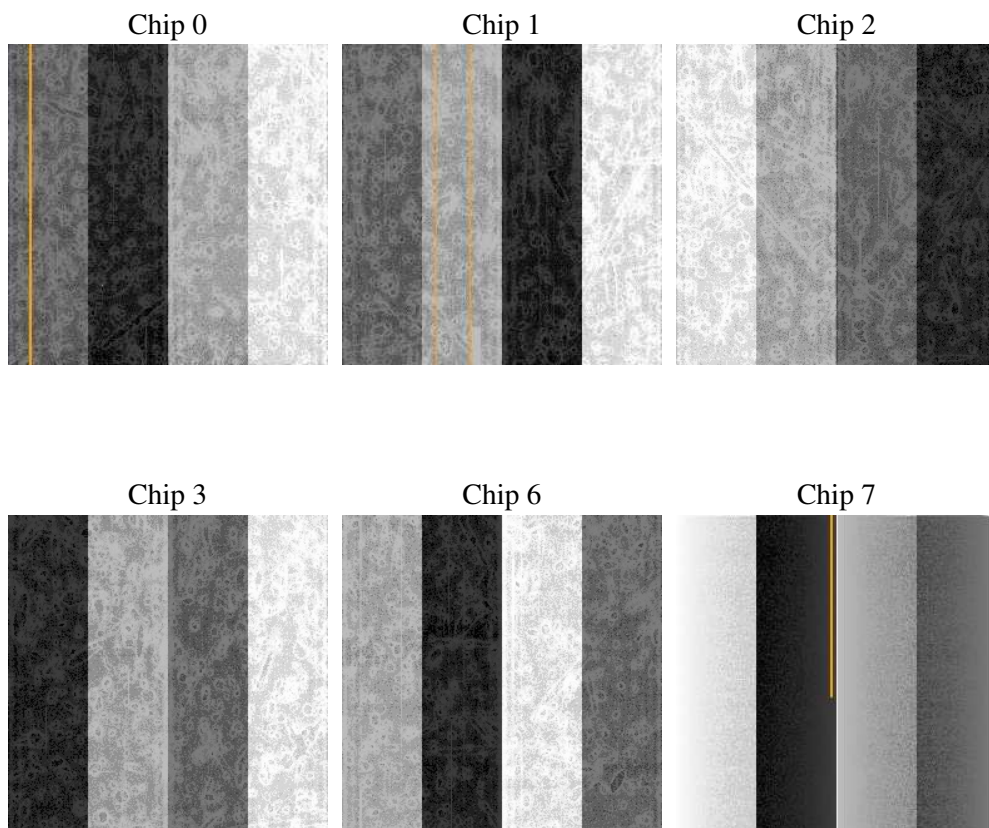
2 OBI

2.1 OBI

2.1.1 Images



2.1.2 Bias



2.1.3 Parameters

obi_num	0
ascdsver	7.6.9
caldbver	3.2.4
date	2006-12-14T11:35:13
revision	2

sched_exp_time	12000.000000
ontime	11755.127729446
ontime0	11758.368679777
ontime1	11755.127729446
ontime2	11755.127729446
ontime3	11755.127729446
ontime6	11755.127729446
ontime7	11758.368679777
l1events	229545

2.1.4 Events

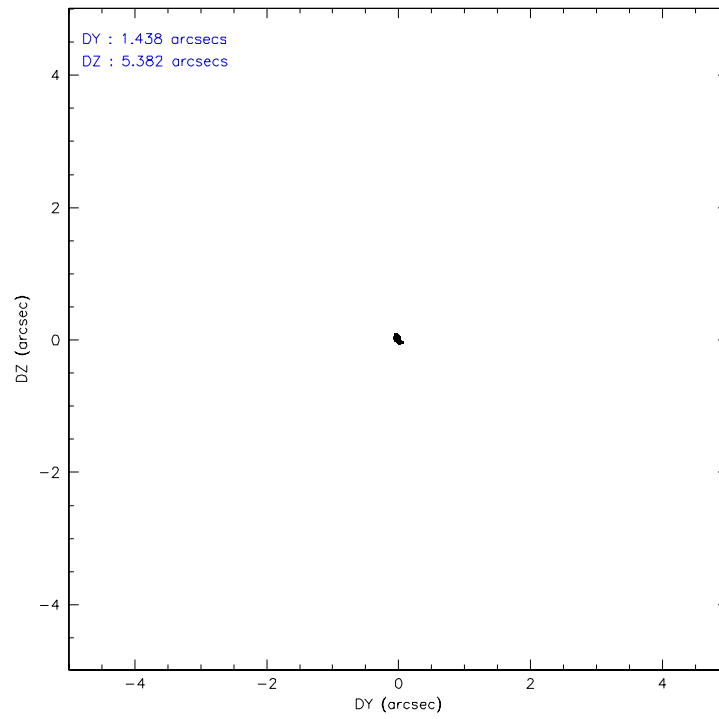
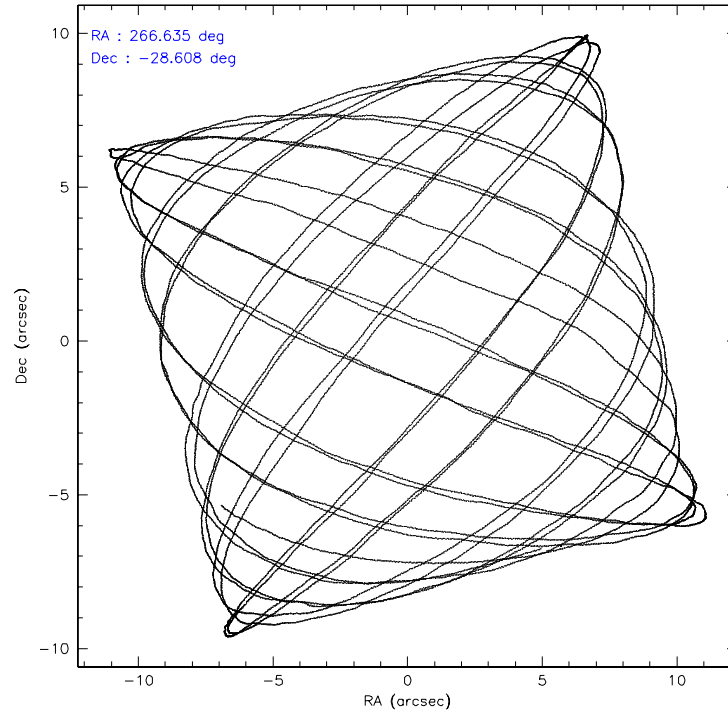
	ccd 0	ccd 1	ccd 2	ccd 3	ccd 6	ccd 7
level 1 events	60343	30660	33118	32587	32367	40470
rejected events	24924	23670	25810	25439	26628	20010
rejected %	41%	77%	77%	78%	82%	49%

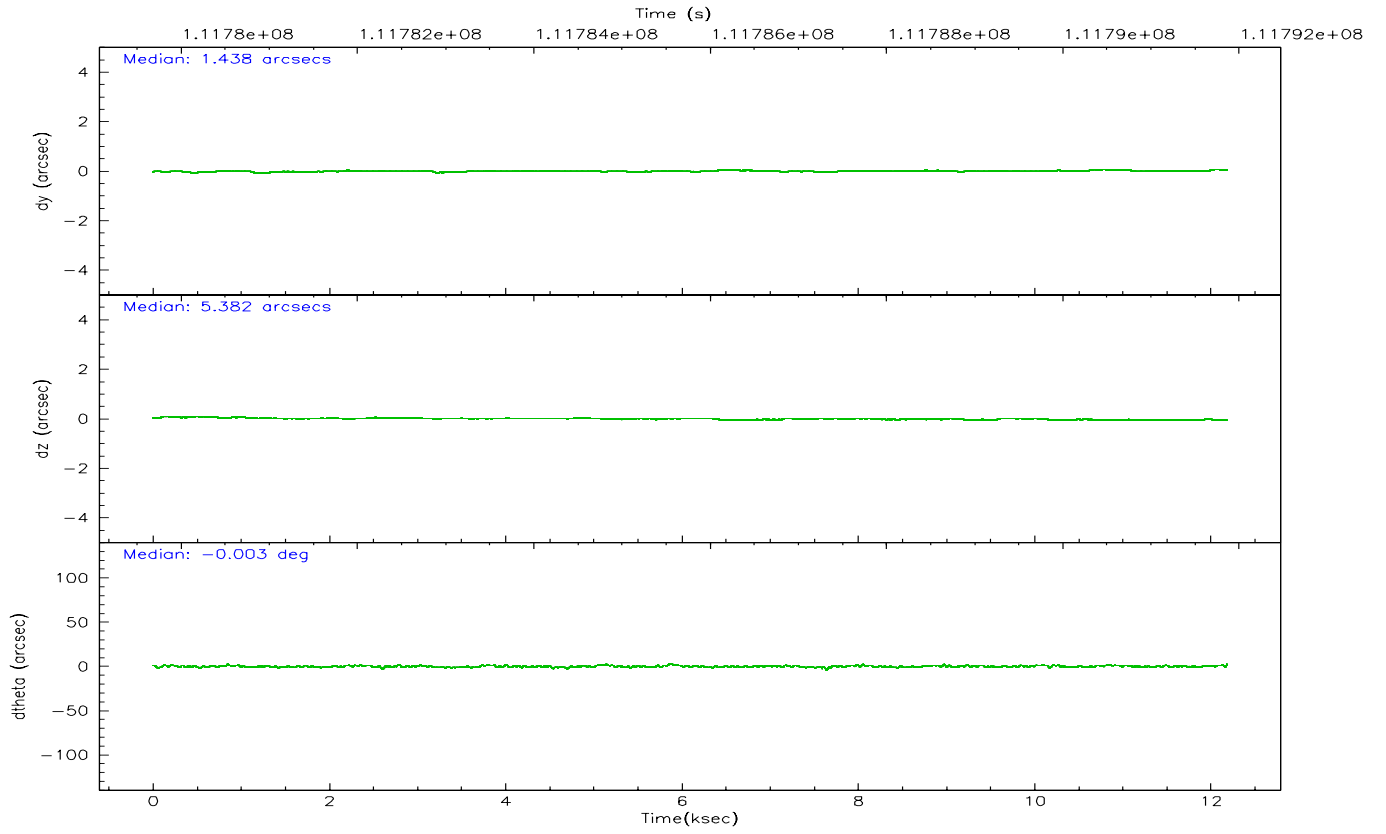
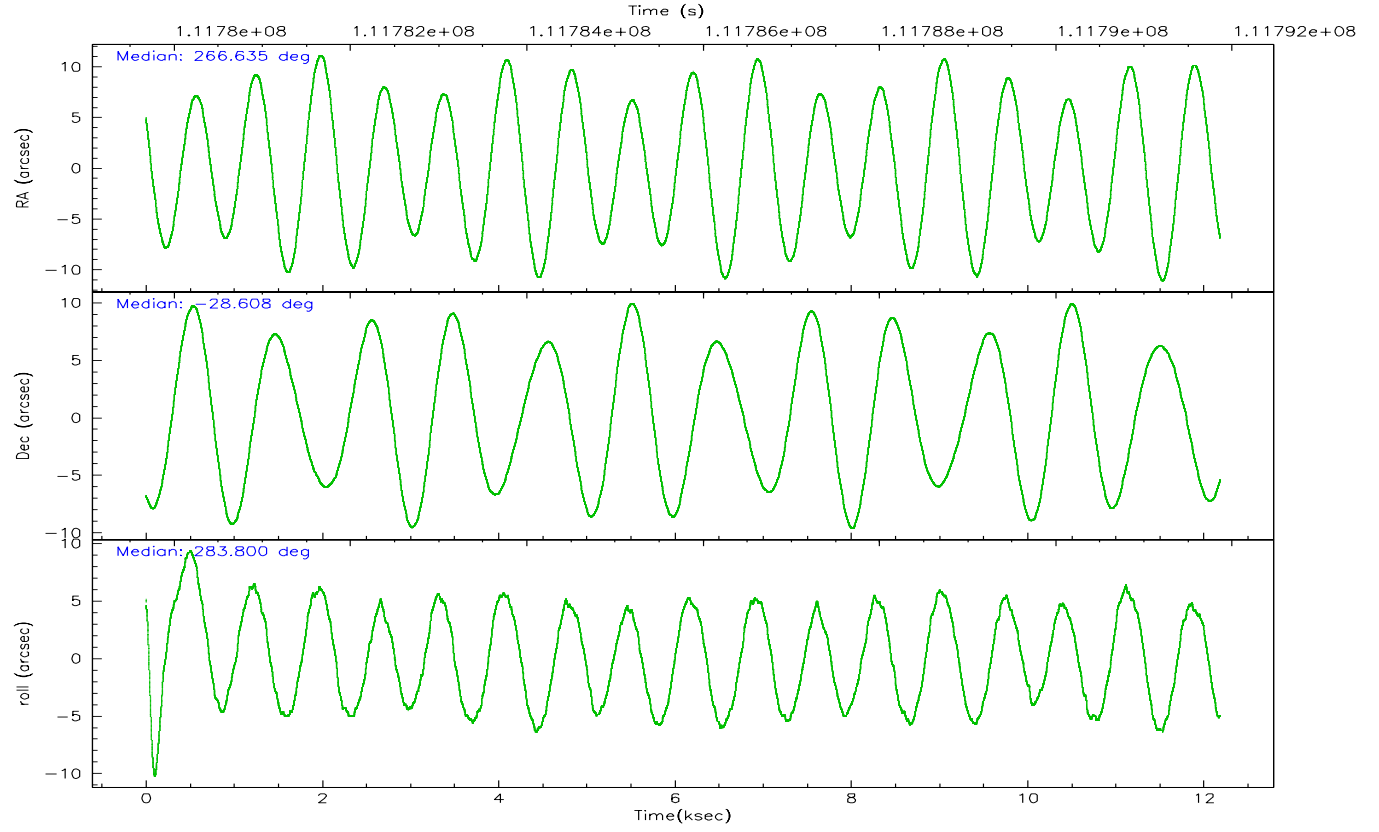
	ccd 0	ccd 1	ccd 2	ccd 3	ccd 6	ccd 7
grade 0 events	20392	3523	3926	3762	2693	1267
	33%	11%	11%	11%	8%	3%
grade 1 events	652	35	33	34	24	41
	1%	0%	0%	0%	0%	0%
grade 2 events	6002	1301	1309	1323	1134	5110
	9%	4%	3%	4%	3%	12%
grade 3 events	2297	554	564	563	482	1138
	3%	1%	1%	1%	1%	2%
grade 4 events	2251	574	544	510	493	1116
	3%	1%	1%	1%	1%	2%
grade 5 events	1756	1396	1106	1293	1416	3437
	2%	4%	3%	3%	4%	8%
grade 6 events	4498	1043	971	991	941	11845
	7%	3%	2%	3%	2%	29%
grade 7 events	22495	22234	24665	24111	25184	16516
	37%	72%	74%	73%	77%	40%

2.2 Compared Parameters

Parameter	Planned	Actual	Parameter	Planned	Actual
Instrument	ACIS	ACIS	Obspar format version number	6	6
Detector	ACIS-012367	ACIS-012367	Obspar file type	PREDICTED	ACTUAL
Grating	NONE	NONE	Obspar update status	NONE	UPDATED
Data mode	FAINT	FAINT	Number of optional ACIS chips dropped	0	0
Observation mode	POINTING	POINTING	On-chip summing requested	N	N
Pointing RA	266.613880	266.6355437495264	Subarray requested	NONE	NONE
Pointing Dec	-28.587998	-28.60780144107724	Alternating exposures requested	N	N
Pointing Roll	283.588224	283.8072845664516	Primary exposure time	0.000000	3.2
Roll angle	283.600000	283.600000			
Roll tolerance	2.000000	2.000000			
Roll constraint allows 180D rotation	N	N			
SIM focus pos (mm)	-0.782348	-0.7809083437167272			
SIM defocus (mm)	0	0.001439871863259334			
SIM translation stage pos (mm)	-233.592463	-233.5874344608287			
SIM translation stage offset (mm)	0	-0.005018542100998502			
Observation start time	111779864.184000	111779488.83823			
Observation start date	2001-07-17T17:56:40	2001-07-17T17:51:28			
Observation end time	111791864.184000	111791998.45122			
Observation end date	2001-07-17T21:16:40	2001-07-17T21:19:58			
Read mode	TIMED	TIMED			

2.3 Aspect



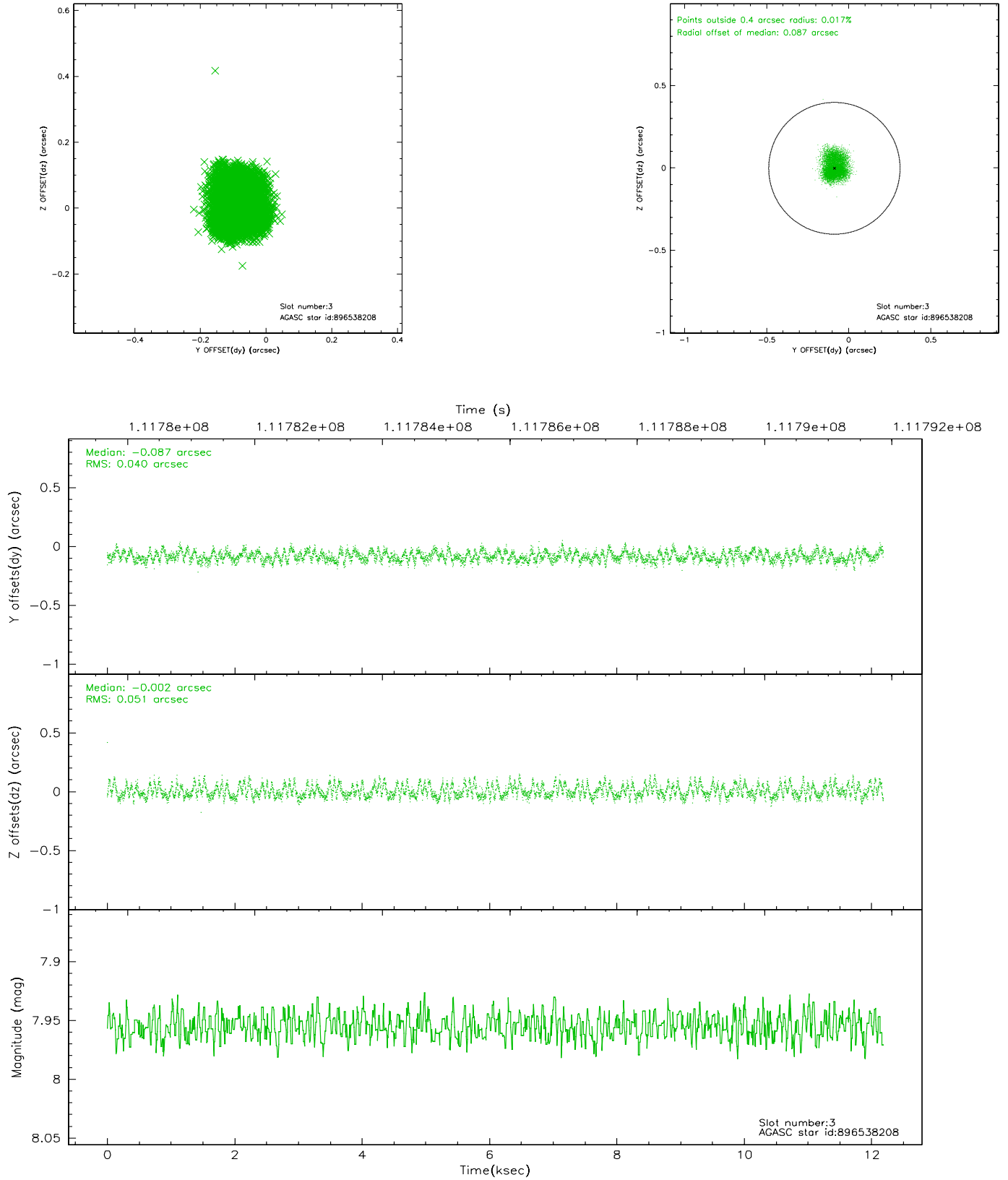


Slot Statistics

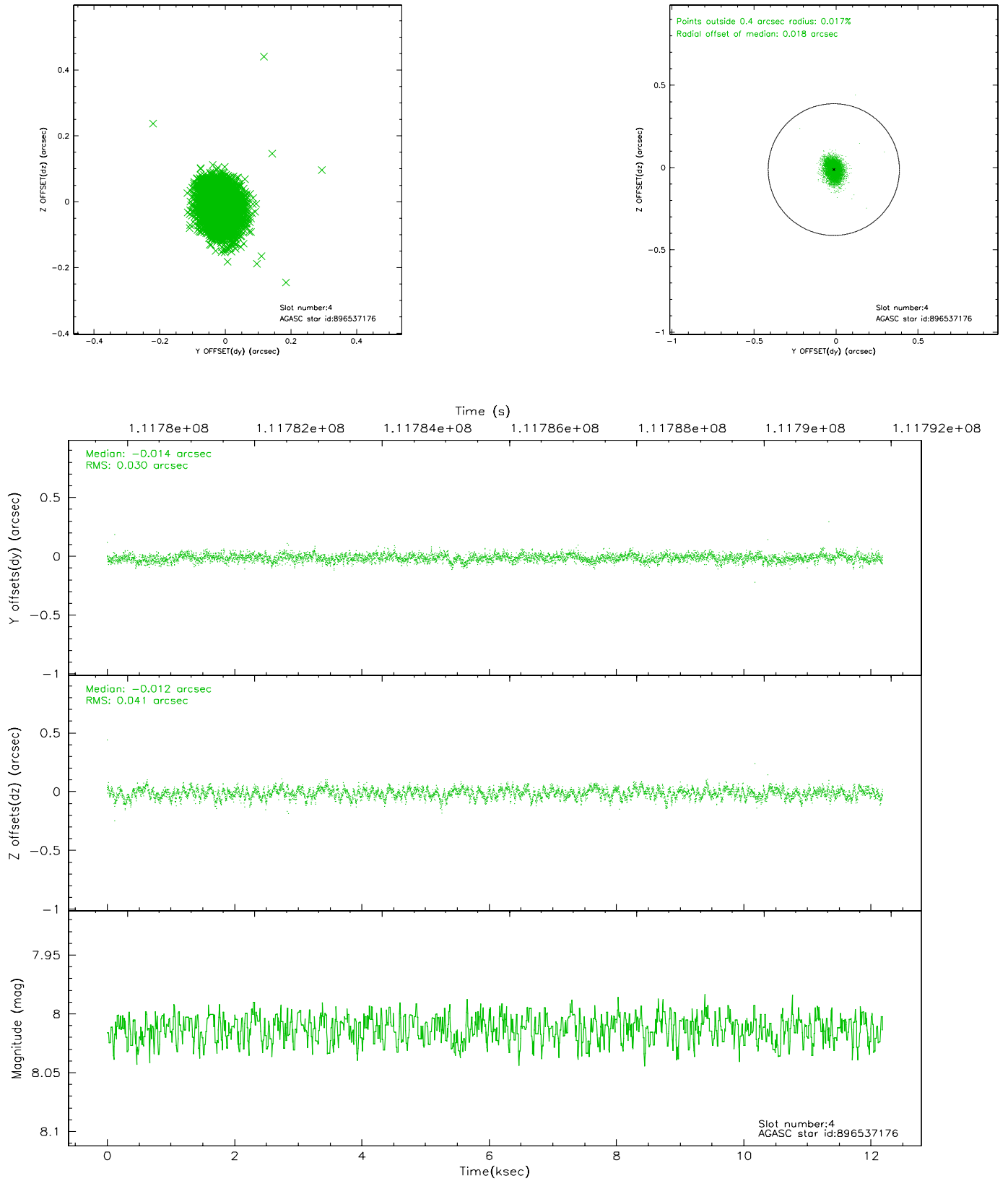
slot	status	id	mag	n_pts	med_dy	med_dz	dr1	dr2	ra	dec	mean_y	mean_z
0	FID	ACIS-I-2	7.15	2972	-0.020	-0.022	0.010	0.018	0.000000	0.000000	-755.78	-835.12
1	FID	ACIS-I-4	7.18	2972	-0.071	0.027	0.006	0.011	0.000000	0.000000	2158.02	1070.92
2	FID	ACIS-I-5	7.23	2972	-0.010	0.064	0.010	0.016	0.000000	0.000000	-1809.09	1069.24
3	GUIDE	896538208	7.96	5945	-0.087	-0.002	0.070	0.109	267.176969	-28.671626	713.76	1657.82
4	GUIDE	896537176	8.01	5942	-0.014	-0.012	0.053	0.087	266.498272	-28.678259	229.86	-430.34
5	GUIDE	896536320	8.99	5939	0.085	-0.065	0.081	0.130	266.369048	-29.307026	2336.02	-1354.67
6	GUIDE	896011040	7.70	5944	0.002	-0.009	0.059	0.091	267.058469	-28.014759	-1671.80	1857.95
7	GUIDE	896538248	8.89	5937	0.014	0.083	0.063	0.102	266.238138	-28.240101	-1496.24	-863.64

2.4 Star Slots

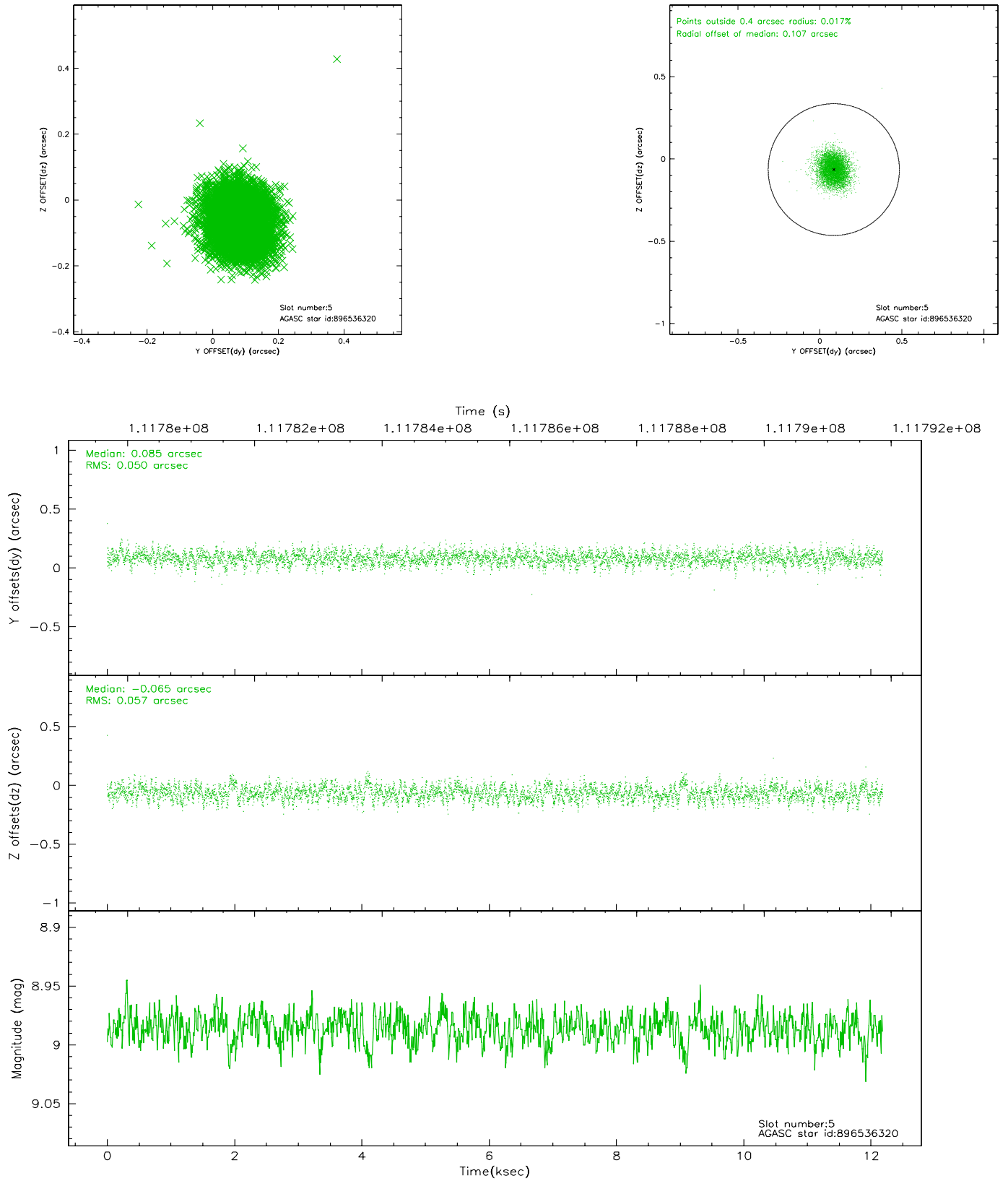
2.4.1 Slot 3



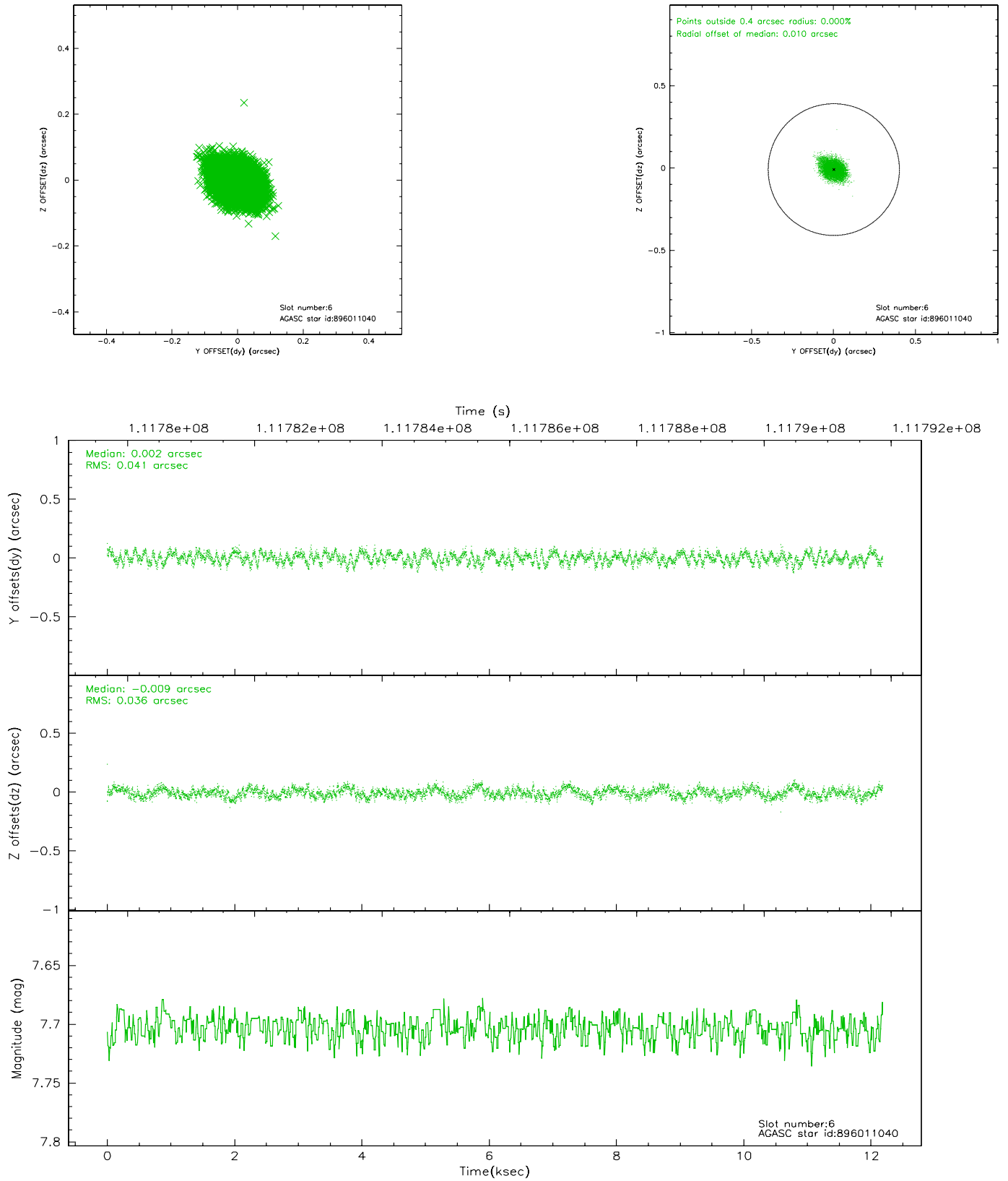
2.4.2 Slot 4



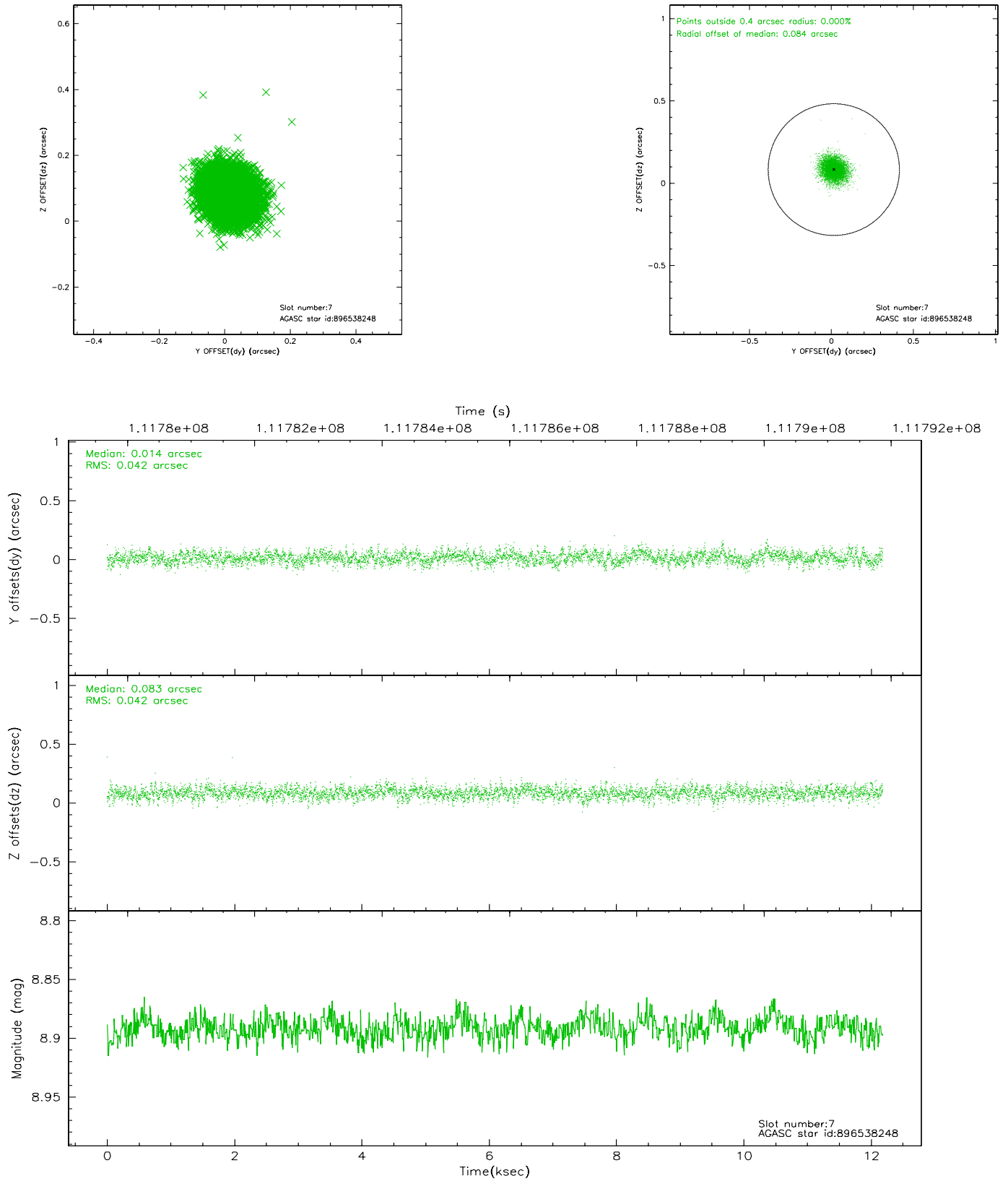
2.4.3 Slot 5



2.4.4 Slot 6

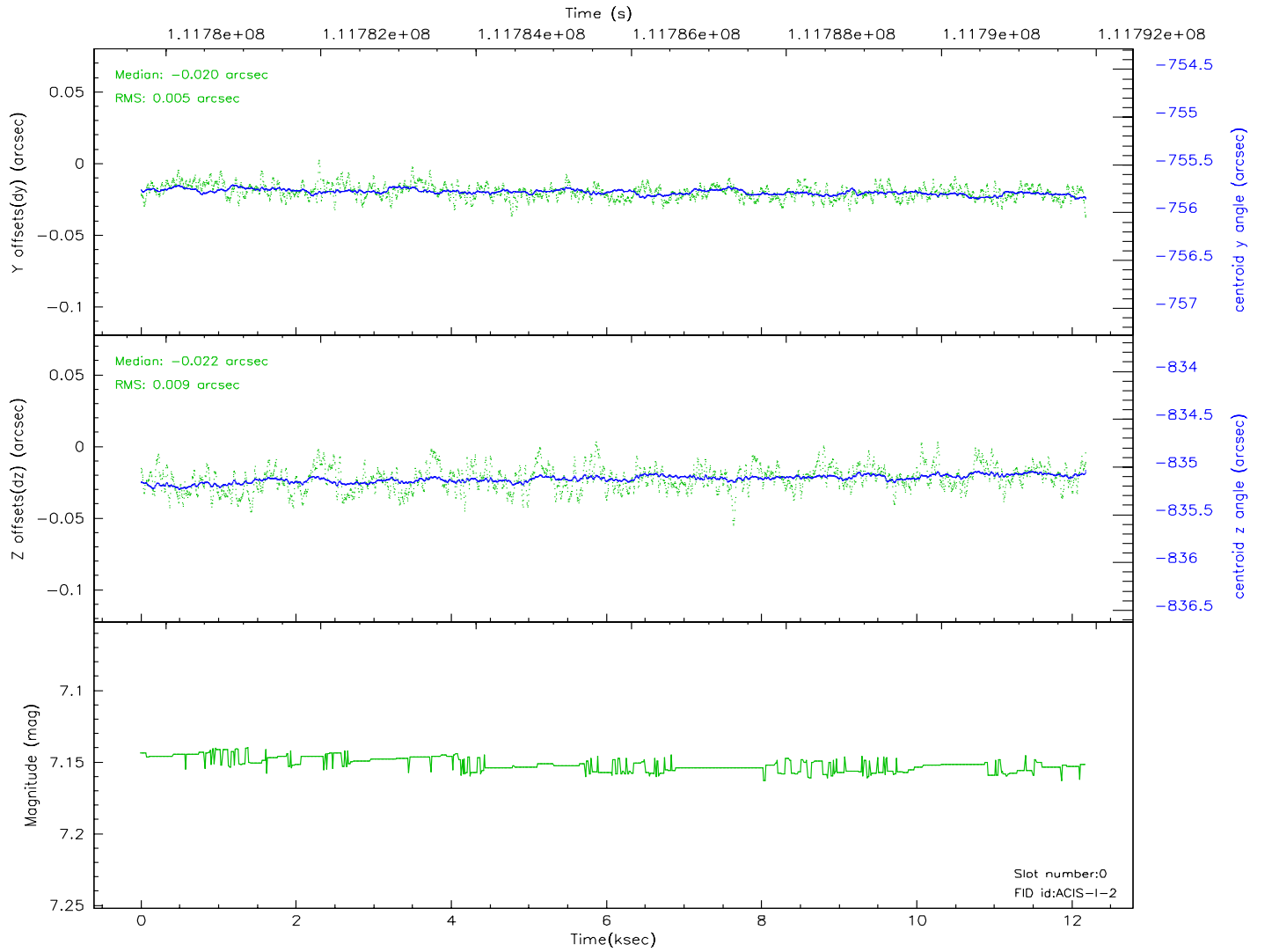
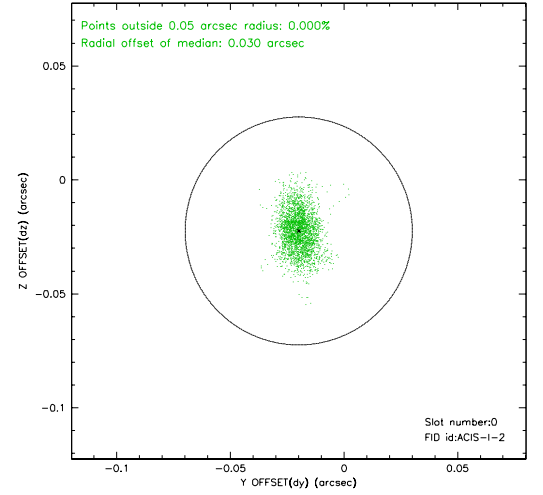
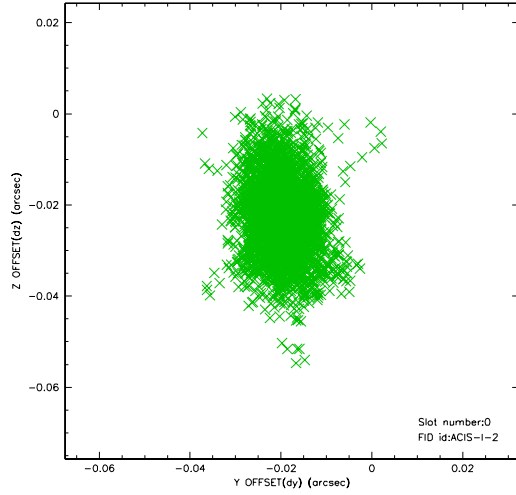


2.4.5 Slot 7

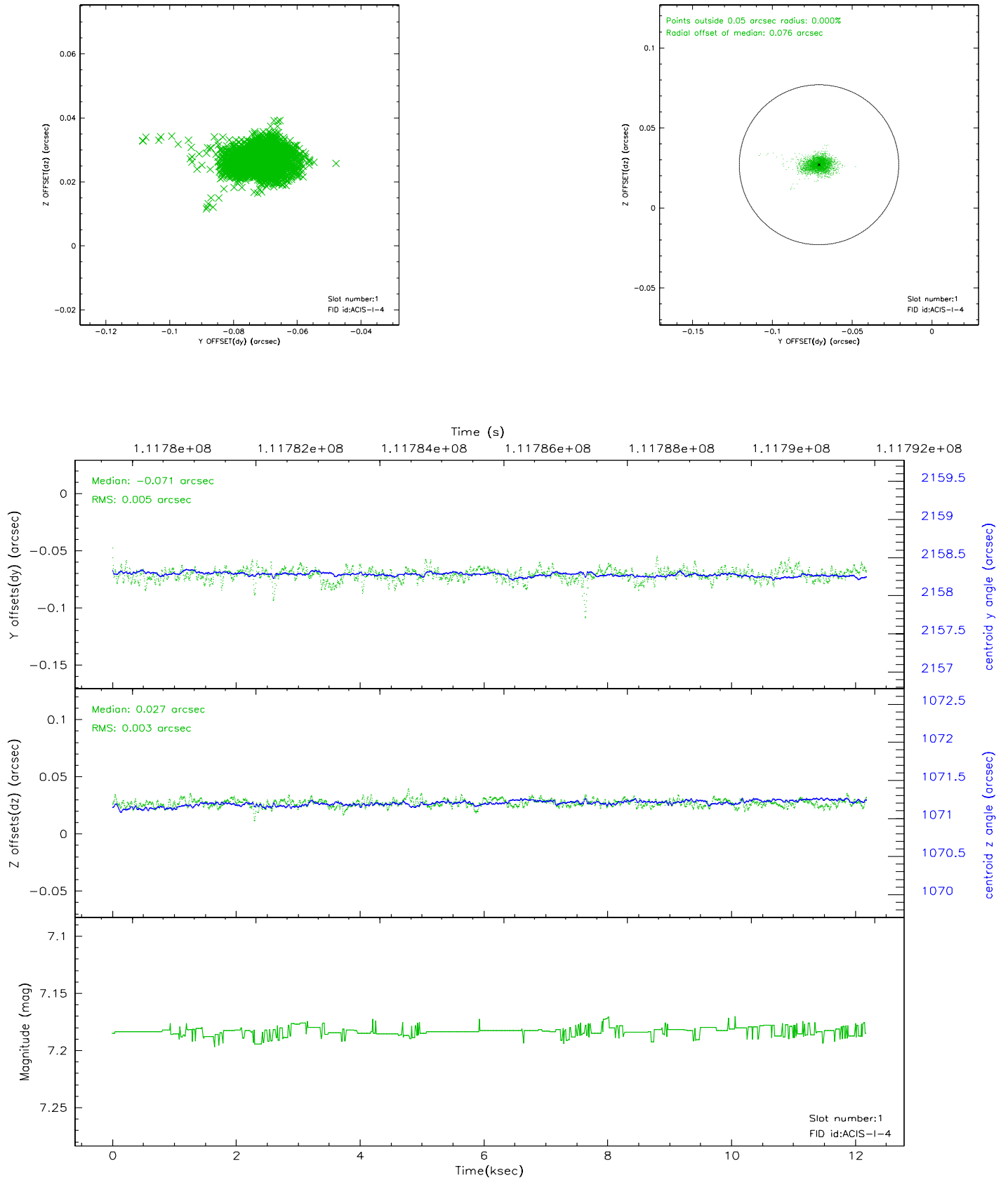


2.5 FID Slots

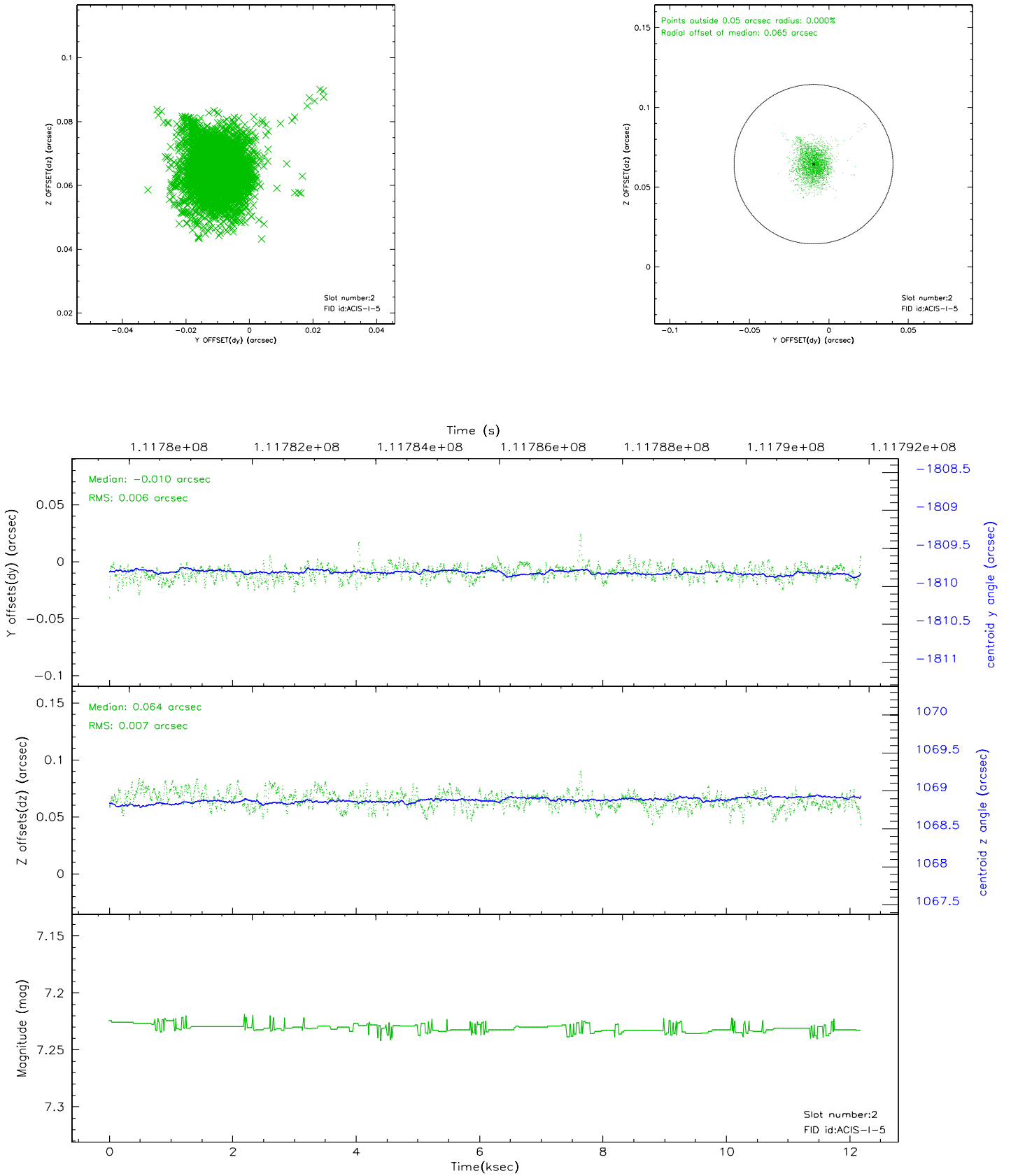
2.5.1 Slot 0



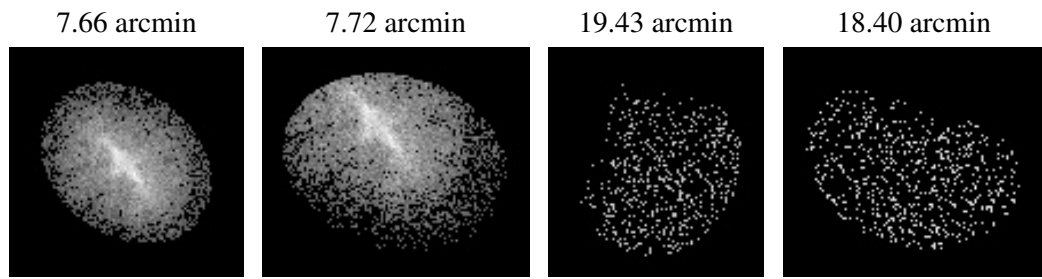
2.5.2 Slot 1



2.5.3 Slot 2



3 Point Sources



A Summary

A.1 Status

V&V Scientist	Beth Sundheim
V&V Date (YYYY-MM-DD)	2006.12.14
V&V Edition	1
V&V Disposition and Status	OK
V&V Charge Time	11.8

A.2 Comments

Roll constraint satisfied.