

V&V Reference Report

L2 ASCDS Version : 7.6.9

Observation 2291 - L2 Version 001
Chandra X-Ray Center

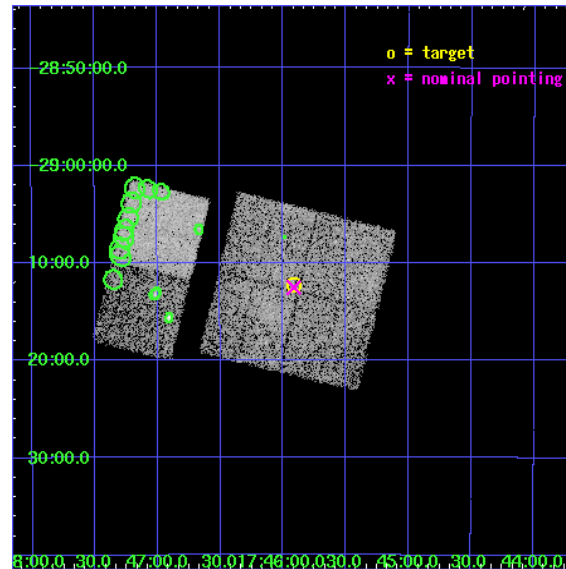
L2 Processing Date : Dec 14 2006

Contents

1	Front	2
2	OBI	3
2.1	OBI	3
2.1.1	Images	3
2.1.2	Bias	3
2.1.3	Parameters	4
2.1.4	Events	4
2.2	Compared Parameters	5
2.3	Aspect	6
2.4	Star Slots	9
2.4.1	Slot 3	9
2.4.2	Slot 4	10
2.4.3	Slot 5	11
2.4.4	Slot 6	12
2.4.5	Slot 7	13
2.5	FID Slots	14
2.5.1	Slot 0	14
2.5.2	Slot 1	15
2.5.3	Slot 2	16
3	Point Sources	17
A	Summary	18
A.1	Status	18
A.2	Comments	18

1 Front

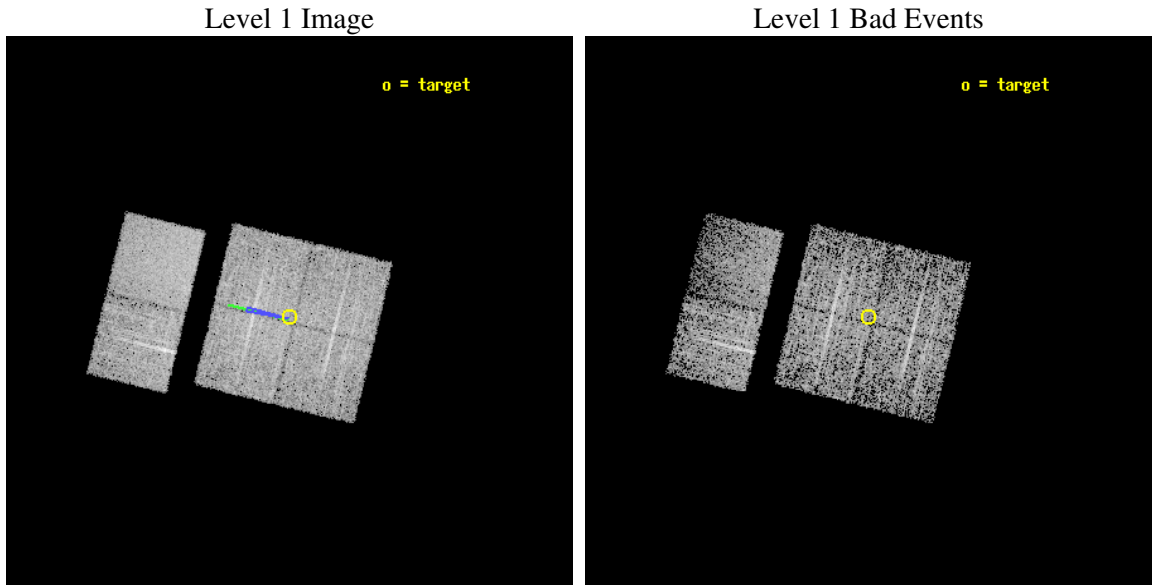
seq_num	900118
obs_id	2291
title	CHANDRA SURVEY OF THE GALACTIC RIDGE AROUND THE MILKY WAY CENTER
observer	Prof. Q. Daniel Wang
object	GCS 16
dtcycle	0
cycle	P
ra_targ	266.4793
dec_targ	-29.2042
ra_nom	266.47845827947
dec_nom	-29.208890632191
roll_nom	283.80728374232
revision	2
ontime	10758.40001002
livetime	10622.170671162
ontime0	10758.40001002
ontime1	10758.40001002
ontime2	10758.40001002
ontime3	10758.40001002
ontime6	10758.40001002
ontime7	10758.40001002
l2events	56280



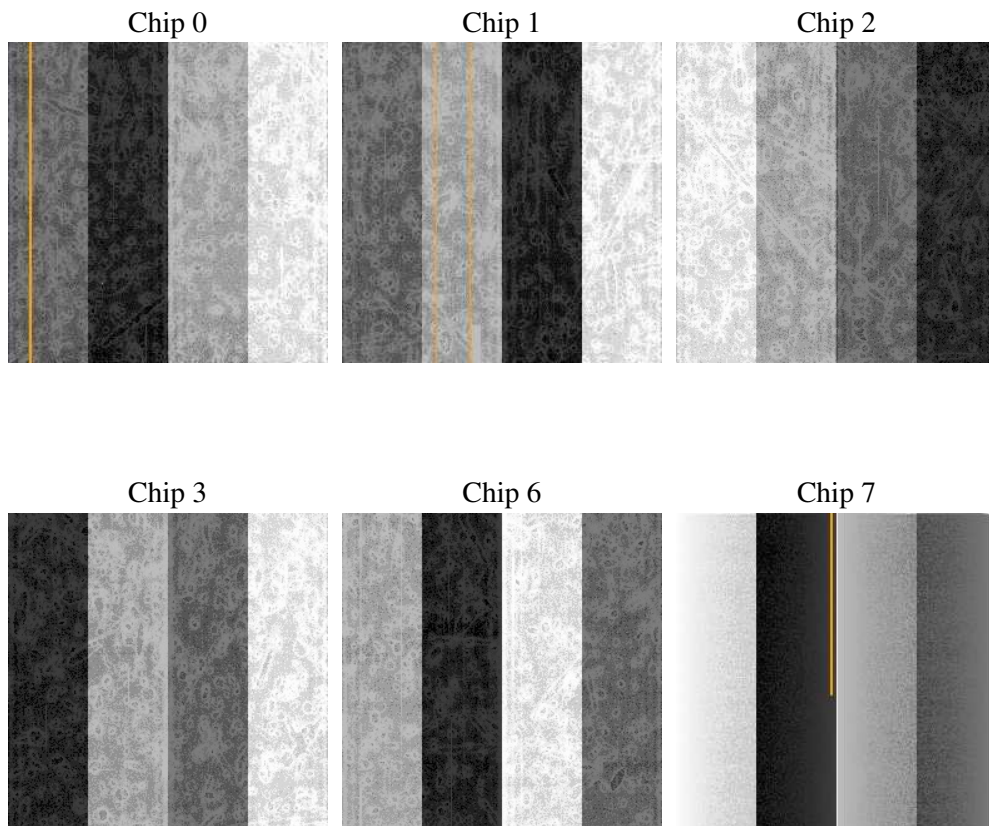
2 OBI

2.1 OBI

2.1.1 Images



2.1.2 Bias



2.1.3 Parameters

obi_num	0
ascdsver	7.6.9
caldbver	3.2.4
date	2006-12-14T13:35:11
revision	2

sched_exp_time	11000.000000
ontime	10763.383351028
ontime0	10763.383351028
ontime1	10763.383351028
ontime2	10763.383351028
ontime3	10763.383351028
ontime6	10763.383351028
ontime7	10763.383351028
l1events	190596

2.1.4 Events

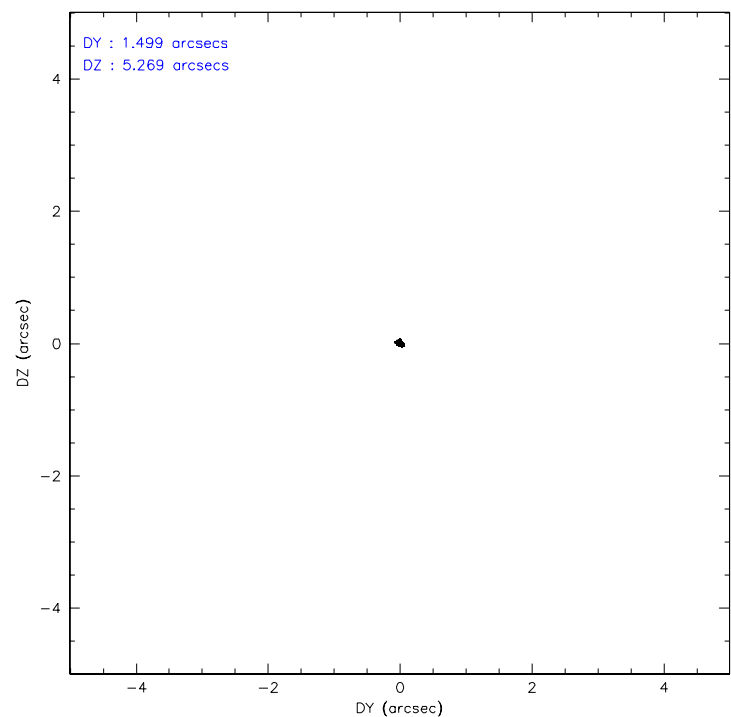
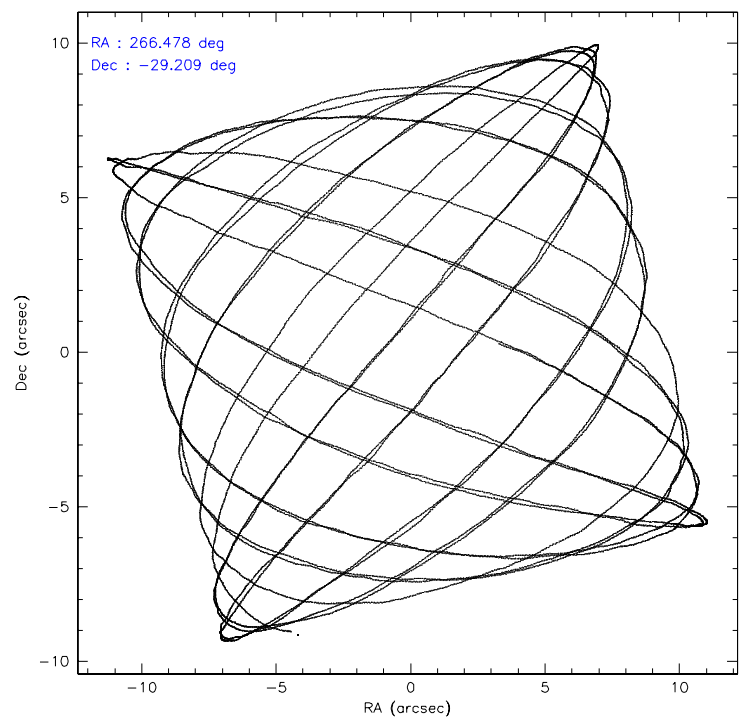
	ccd 0	ccd 1	ccd 2	ccd 3	ccd 6	ccd 7
level 1 events	28428	30581	32644	31661	30958	36324
rejected events	20740	20595	23621	22467	25165	18191
rejected %	72%	67%	72%	70%	81%	50%

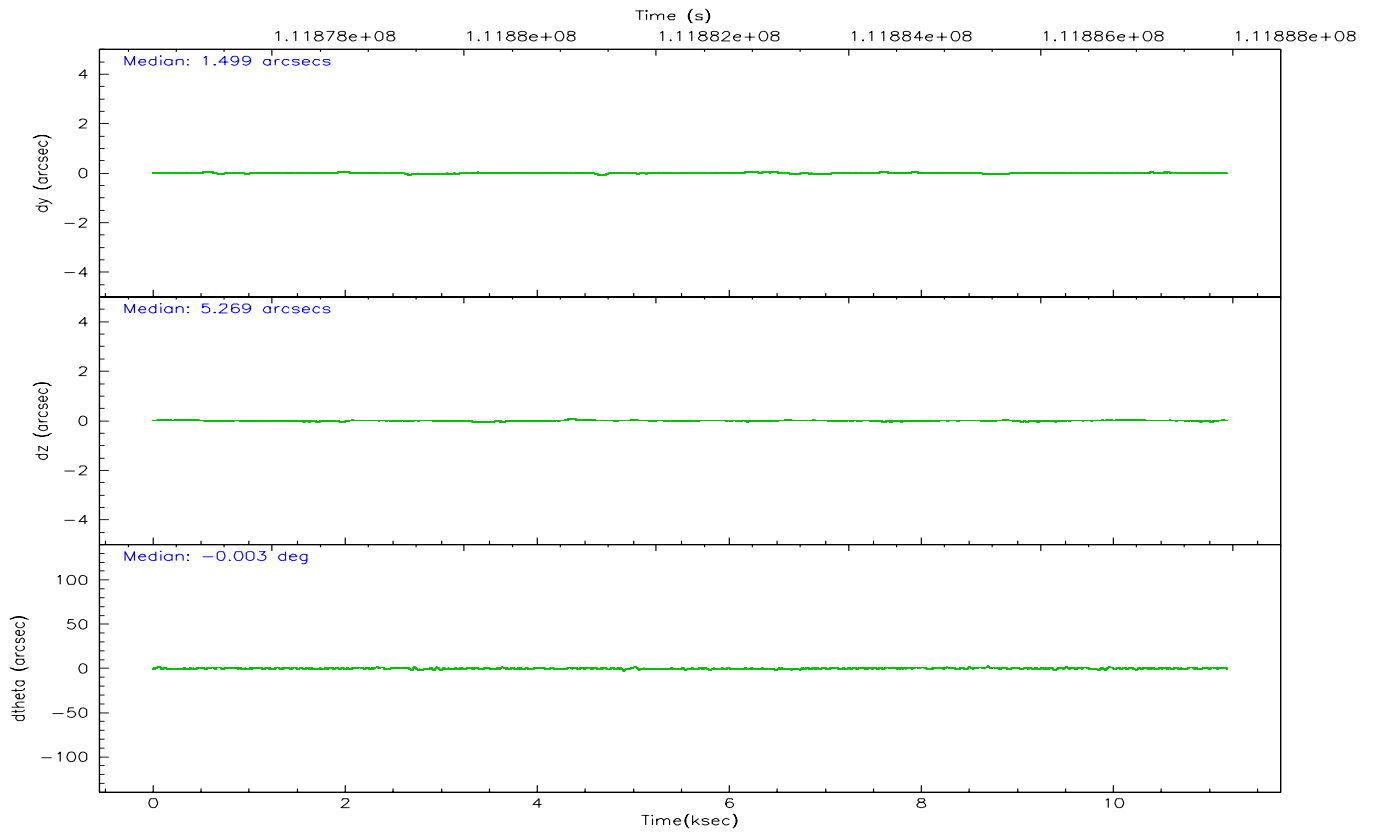
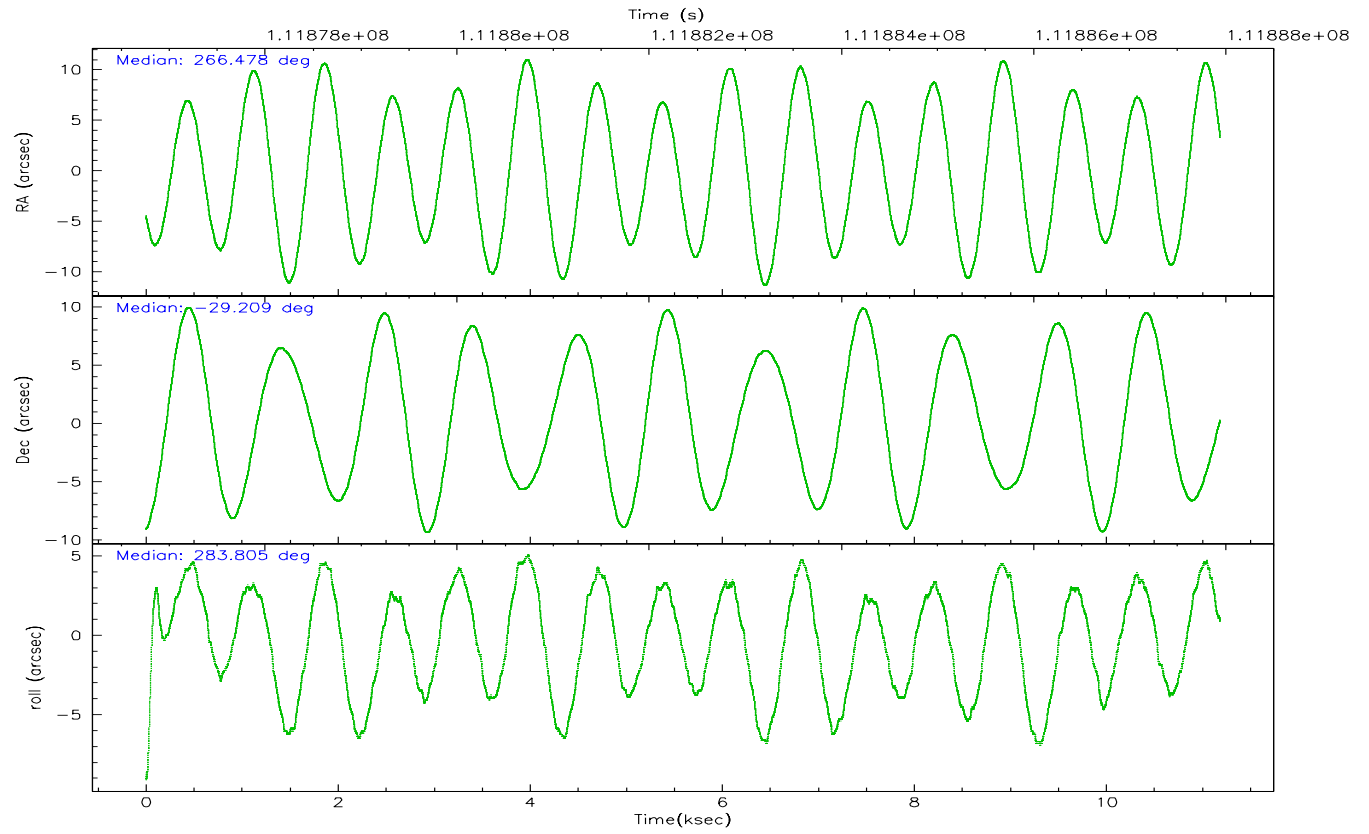
	ccd 0	ccd 1	ccd 2	ccd 3	ccd 6	ccd 7
grade 0 events	4467	5798	5698	5417	2907	1214
	15%	18%	17%	17%	9%	3%
grade 1 events	33	46	39	41	23	31
	0%	0%	0%	0%	0%	0%
grade 2 events	1284	1629	1400	1545	1081	4577
	4%	5%	4%	4%	3%	12%
grade 3 events	538	622	512	593	475	1037
	1%	2%	1%	1%	1%	2%
grade 4 events	511	730	531	574	426	1056
	1%	2%	1%	1%	1%	2%
grade 5 events	1033	1266	1015	1252	1338	3090
	3%	4%	3%	3%	4%	8%
grade 6 events	894	1209	888	1068	906	10258
	3%	3%	2%	3%	2%	28%
grade 7 events	19668	19281	22561	21171	23802	15061
	69%	63%	69%	66%	76%	41%

2.2 Compared Parameters

Parameter	Planned	Actual	Parameter	Planned	Actual
Instrument	ACIS	ACIS	Obspar format version number	6	6
Detector	ACIS-012367	ACIS-012367	Obspar file type	PREDICTED	ACTUAL
Grating	NONE	NONE	Obspar update status	NONE	UPDATED
Data mode	FAINT	FAINT	Number of optional ACIS chips dropped	0	0
Observation mode	POINTING	POINTING	On-chip summing requested	N	N
Pointing RA	266.456652	266.4784582794661	Subarray requested	NONE	NONE
Pointing Dec	-29.189091	-29.20889063219079	Alternating exposures requested	N	N
Pointing Roll	283.587955	283.807283742319	Primary exposure time	0.000000	3.2
Roll angle	283.600000	283.600000			
Roll tolerance	2.000000	2.000000			
Roll constraint allows 180D rotation	N	N			
SIM focus pos (mm)	-0.782348	-0.7809083437167272			
SIM defocus (mm)	0	0.001439871863259334			
SIM translation stage pos (mm)	-233.592463	-233.5874344608287			
SIM translation stage offset (mm)	0	-0.005018542100998502			
Observation start time	111876944.184000	111876568.64203			
Observation start date	2001-07-18T20:54:40	2001-07-18T20:49:28			
Observation end time	111887944.184000	111888078.36748			
Observation end date	2001-07-18T23:58:00	2001-07-19T00:01:18			
Read mode	TIMED	TIMED			

2.3 Aspect



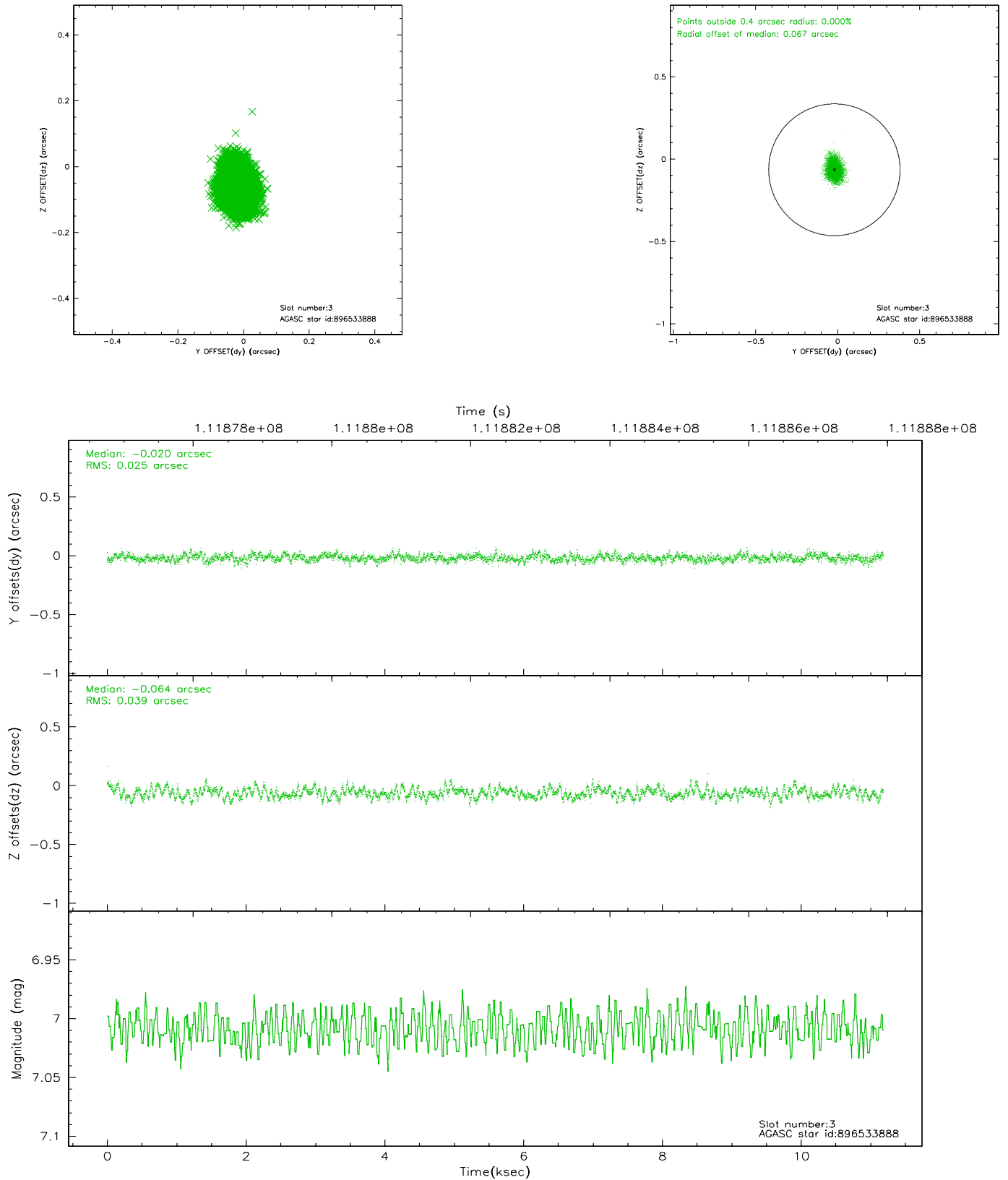


Slot Statistics

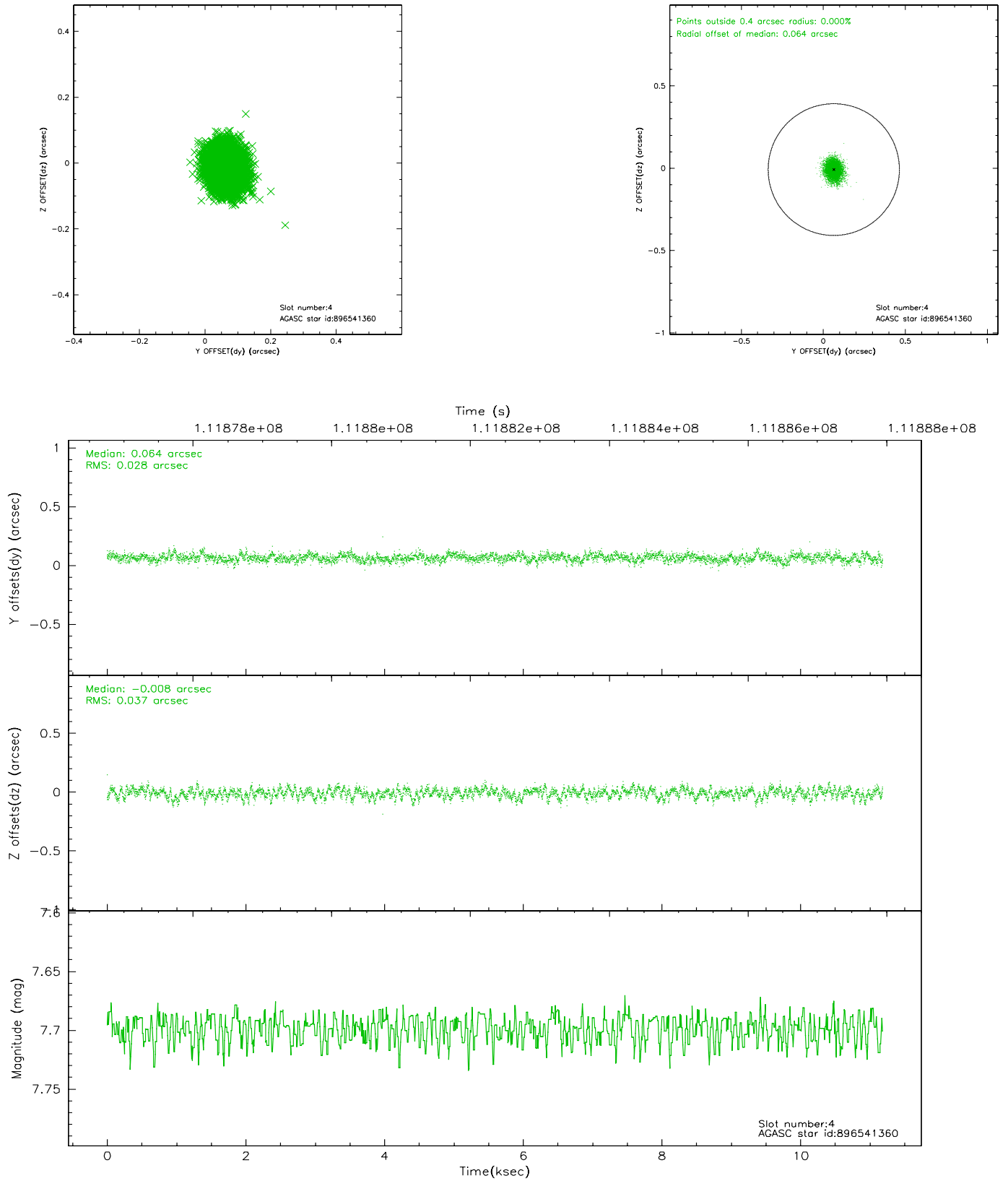
slot	status	id	mag	n_pts	med_dy	med_dz	dr1	dr2	ra	dec	mean_y	mean_z
0	FID	ACIS-I-2	7.15	2729	-0.014	-0.024	0.009	0.016	0.000000	0.000000	-755.84	-835.02
1	FID	ACIS-I-4	7.18	2729	-0.072	0.025	0.005	0.009	0.000000	0.000000	2157.93	1071.01
2	FID	ACIS-I-5	7.23	2728	-0.014	0.068	0.009	0.015	0.000000	0.000000	-1809.10	1069.38
3	GUIDE	896533888	7.01	5458	-0.020	-0.064	0.049	0.082	266.666434	-29.392757	868.60	467.43
4	GUIDE	896541360	7.70	5458	0.064	-0.008	0.049	0.080	266.684478	-29.453744	1095.54	470.57
5	GUIDE	896537176	8.02	5458	-0.091	-0.018	0.045	0.073	266.498272	-28.678259	-1755.74	560.08
6	GUIDE	896540808	7.50	5457	-0.038	0.010	0.050	0.085	265.985401	-29.308604	74.05	-1539.34
7	GUIDE	896536320	8.96	5457	0.082	0.080	0.075	0.124	266.369048	-29.307026	349.08	-367.00

2.4 Star Slots

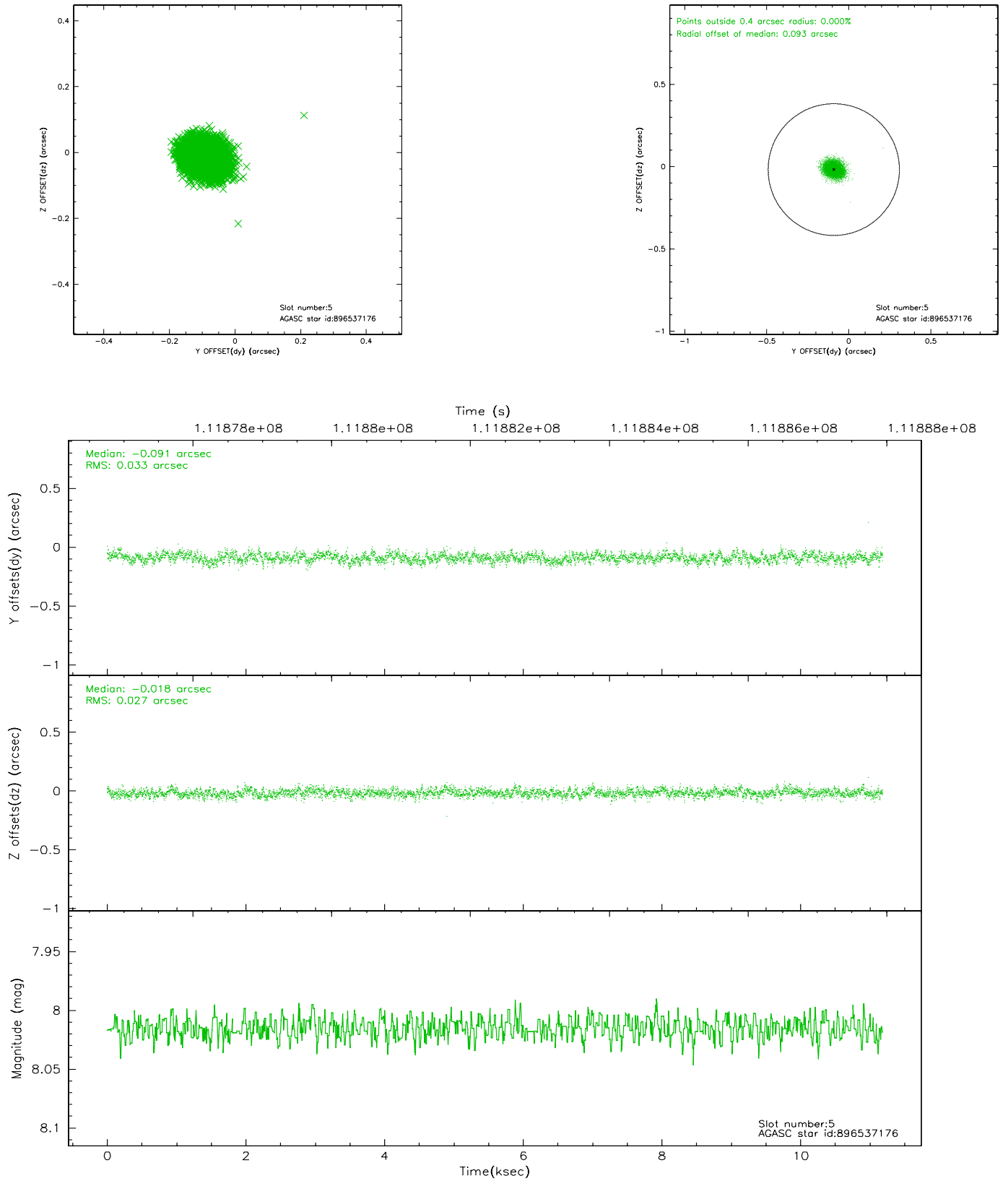
2.4.1 Slot 3



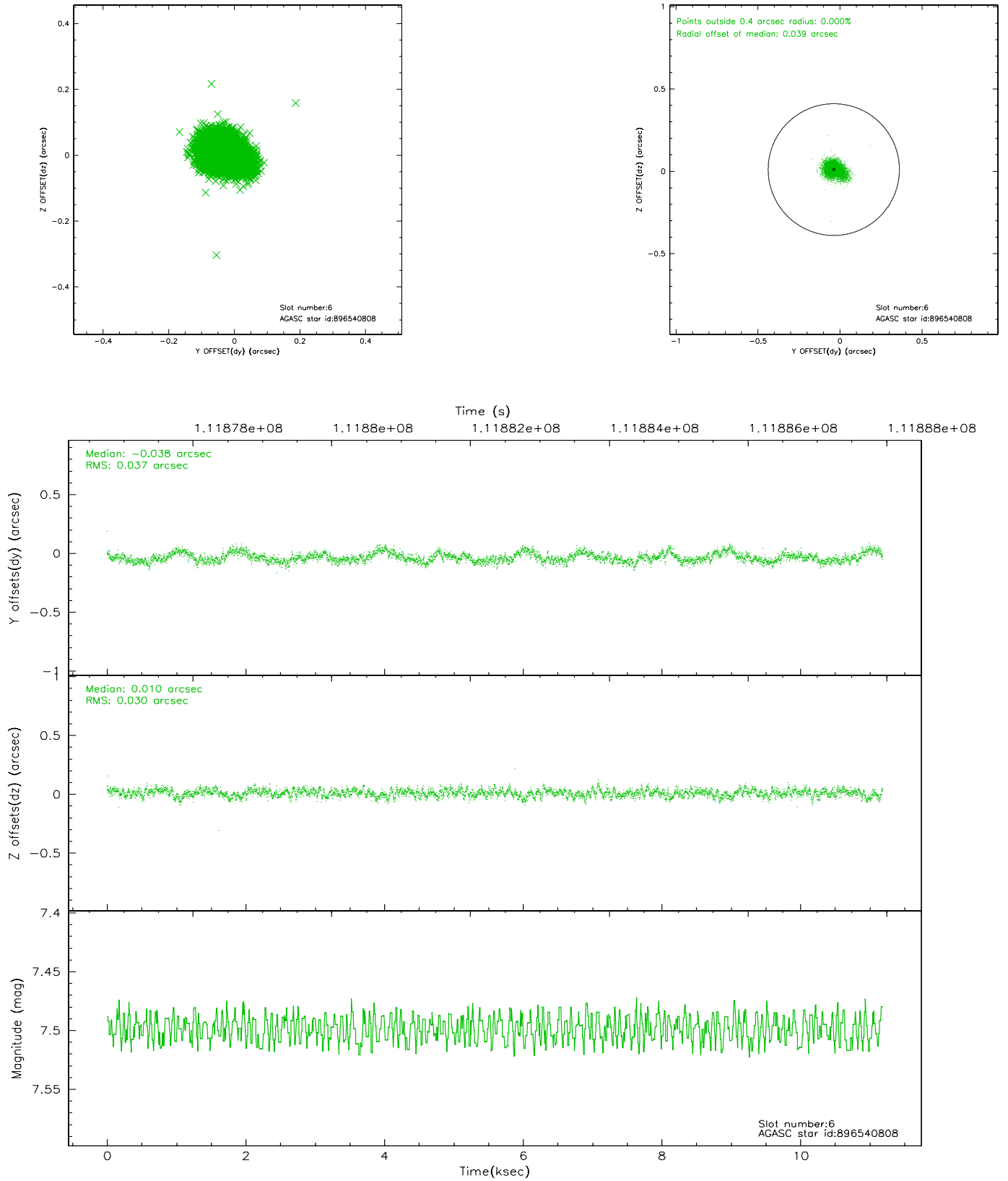
2.4.2 Slot 4



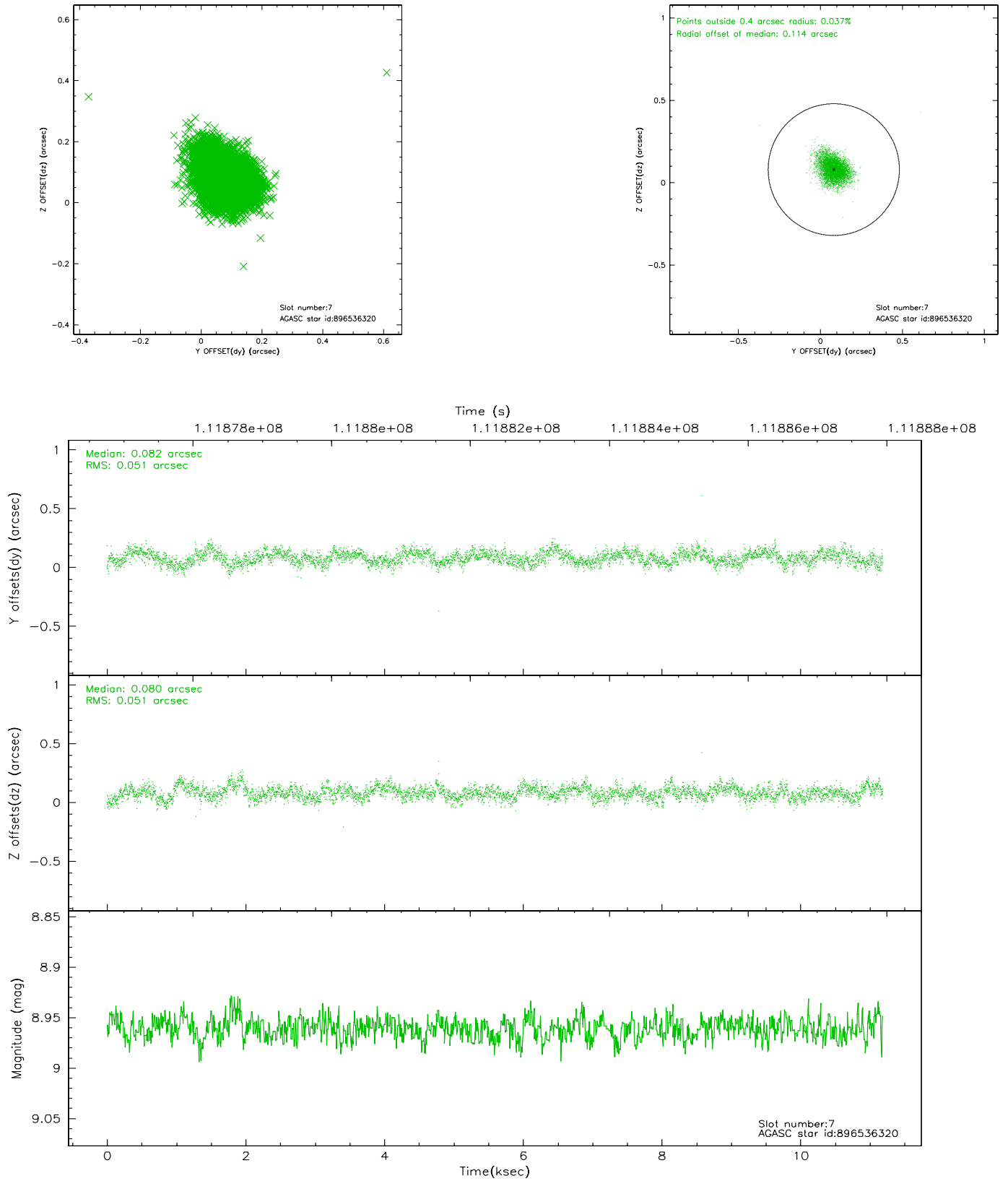
2.4.3 Slot 5



2.4.4 Slot 6

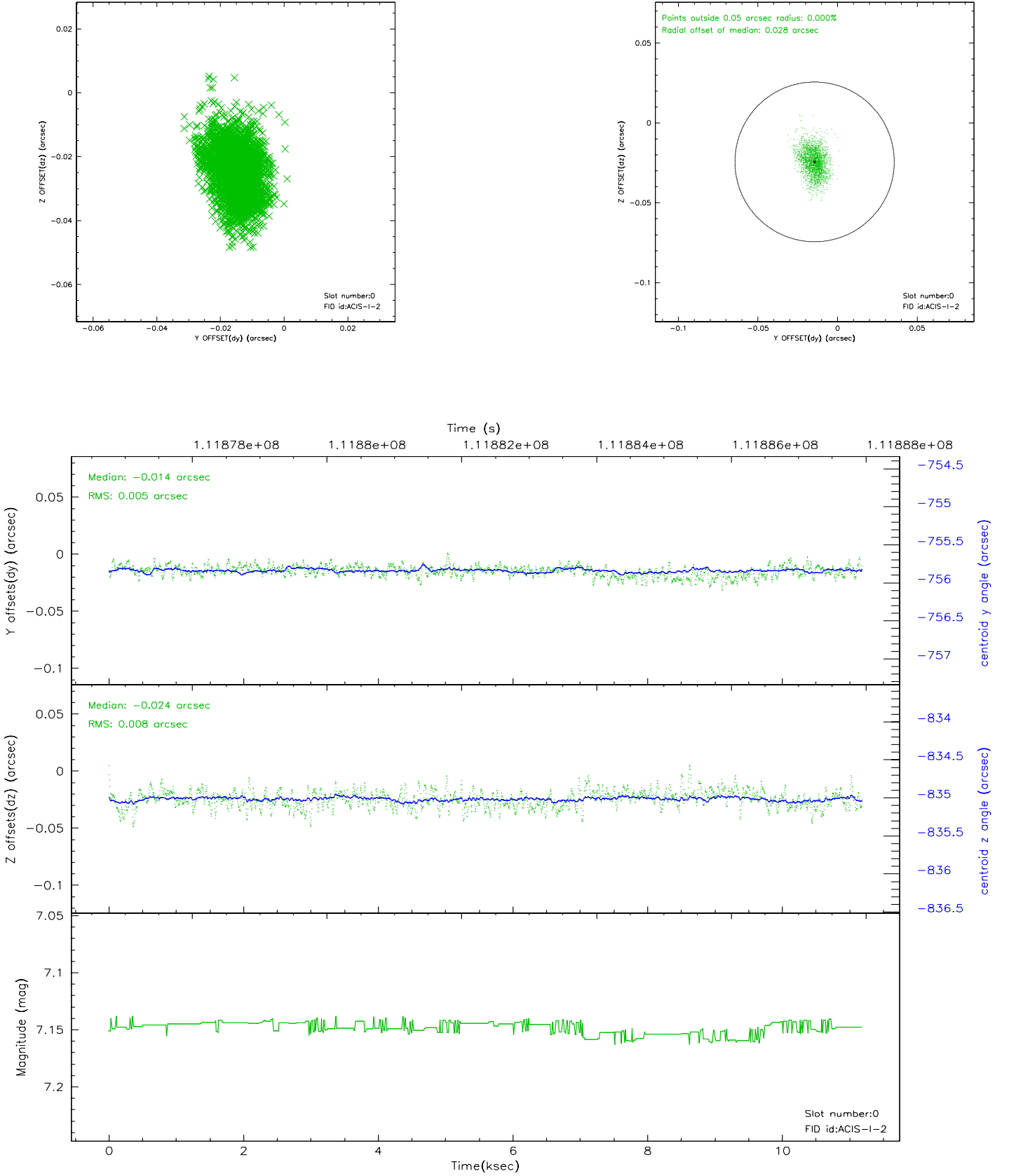


2.4.5 Slot 7

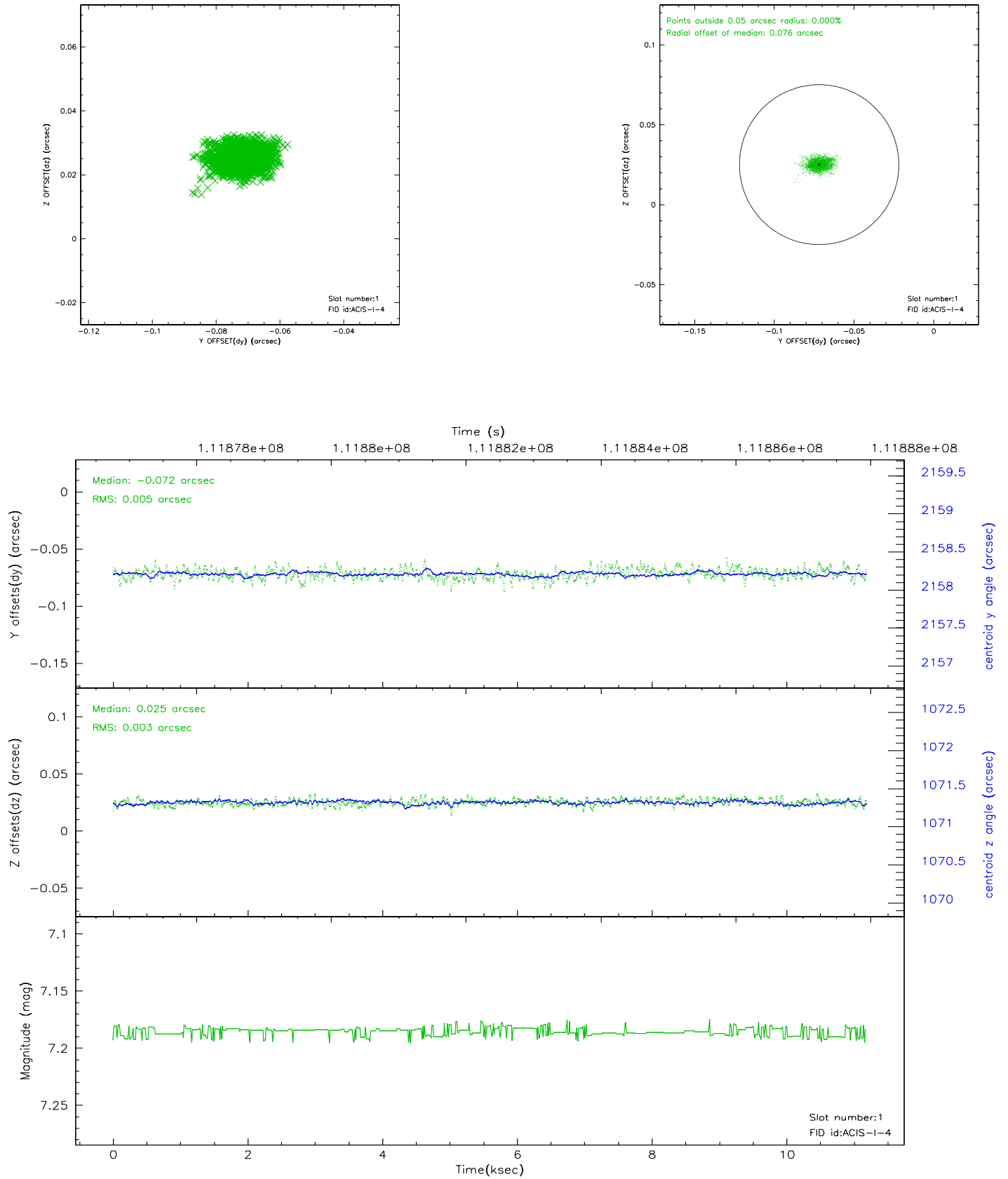


2.5 FID Slots

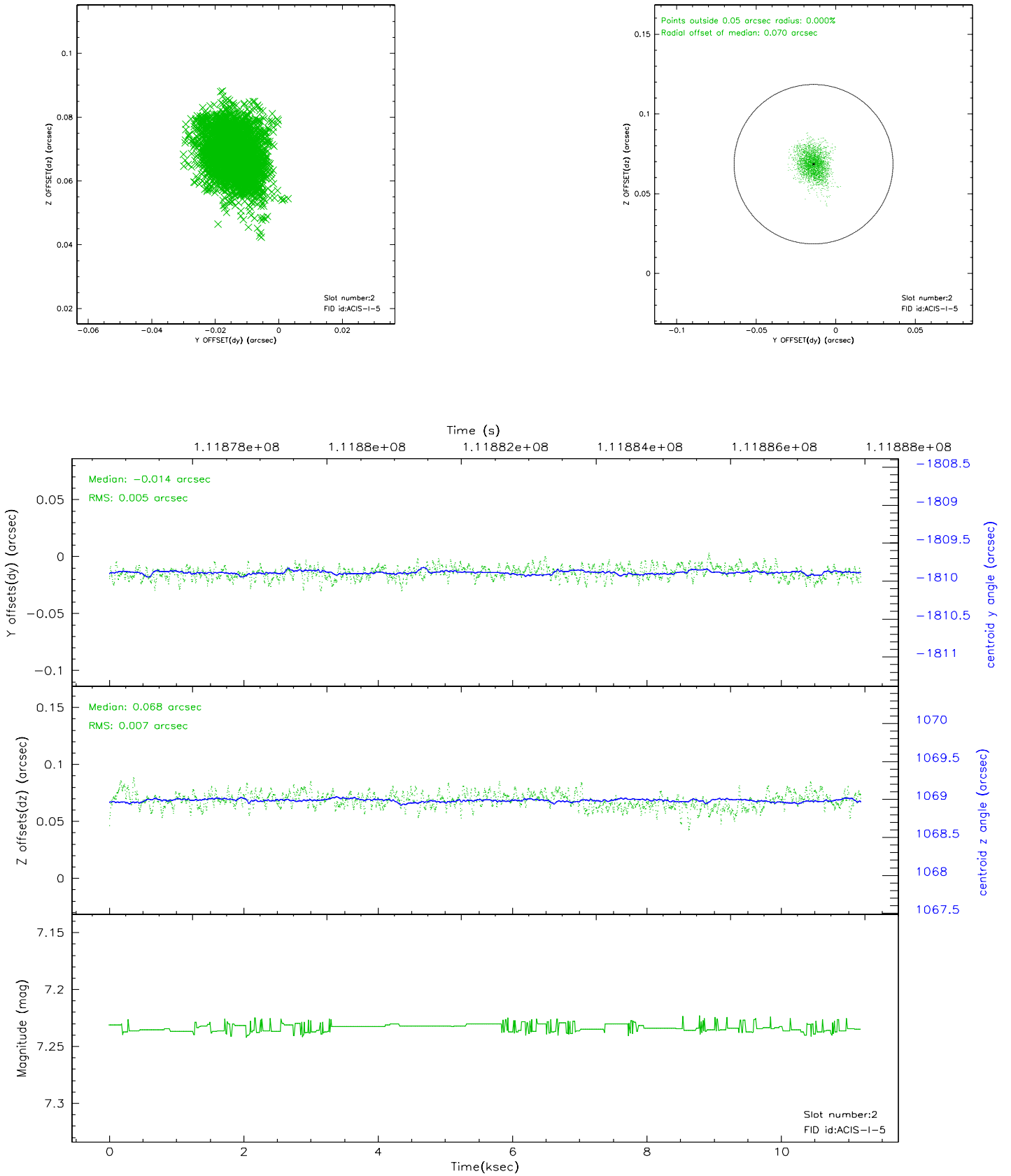
2.5.1 Slot 0



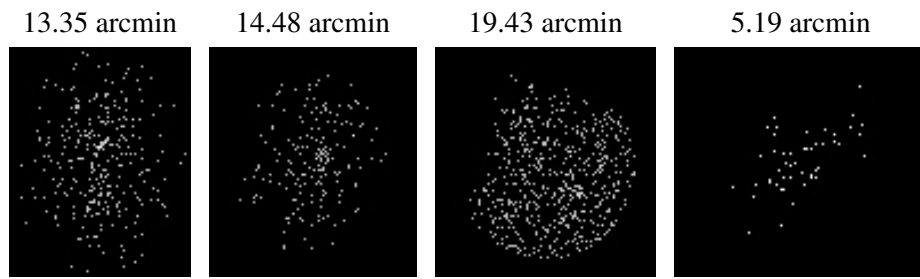
2.5.2 Slot 1



2.5.3 Slot 2



3 Point Sources



A Summary

A.1 Status

V&V Scientist	Jen Lauer
V&V Date (YYYY-MM-DD)	2006.12.14
V&V Edition	1
V&V Disposition and Status	OK
V&V Charge Time	10.761

A.2 Comments

Roll constraint met.